

School Malaise Trap Program

Species Image Library

The images of the species collected in your Malaise trap are shown below. A single representative for each species was selected to be photographed; in some cases, only a damaged specimen was available.

Re-render images : per page

300 Images Per Page - Pages : 1



BIOUG05542-G12 [Lateral]
Aphidius rhopalosiphi



BIOUG05507-D08 [Lateral]
Lasius neoniger



BIOUG05502-A07 [Lateral]
Prenolepis imparis



BIOUG05505-B08 [Lateral]
Tersilochinae



BIOUG05557-C02 [Lateral]
Mymaridae



BIOUG05533-G12 [Lateral]
Anthicidae



BIOUG05509-H09 [Dorsal]
Latridiidae



BIOUG05507-H02 [Dorsal]
Latridiidae



BIOUG05510-A05 [Dorsal]
Cyphon laevipennis



BIOUG05598-H09 [Lateral]
Staphylinidae



BIOUG05523-E08 [Lateral]
Anthomyiidae



BIOUG05501-A01 [Lateral]
Delia antiqua



BIOUG05518-B12 [Lateral]
Pollenia angustigena



BIOUG05518-B06 [Lateral]
Pollenia rudis



BIOUG05502-H03 [Lateral]
Pollenia vagabunda



BIOUG05503-B03 [Lateral]
Cecidomyiidae



BIOUG05503-B09 [Lateral]
Cecidomyiidae



BIOUG05508-B01 [Lateral]
Cecidomyiidae



BIOUG05512-H02 [Lateral]
Cecidomyiidae



BIOUG05629-A02 [Lateral]
Cecidomyiidae



BIOUG05629-E05 [Lateral]
Cecidomyiidae



BIOUG05542-B01 [Lateral]
Cecidomyiidae



BIOUG05508-C09 [Lateral]
Chironomidae



BIOUG05503-H02 [Lateral]
Chironomidae



BIOUG05504-B10 [Lateral]
Chironomidae



BIOUG05503-A11 [Lateral]
Chironomidae



BIOUG05510-G12 [Lateral]
Chironomidae



BIOUG05503-A06 [Lateral]
Chironomidae



BIOUG05506-F11 [Lateral]
Chironomidae



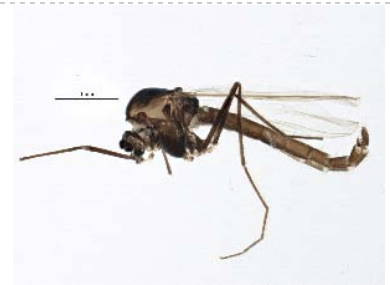
BIOUG05516-G06 [Lateral]
Chironomidae



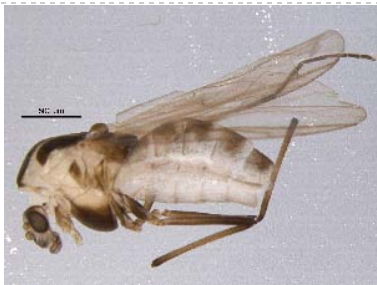
BIOUG05505-F01 [Lateral]
Chironomidae



BIOUG05505-A07 [Lateral]
Chironomidae



BIOUG05506-C04 [Lateral]
Chironomidae



BIOUG05628-D09 [Lateral]
Chironomidae



BIOUG05514-C06 [Lateral]
Chironomidae



BIOUG05503-B06 [Lateral]
Chironomidae



BIOUG05503-A08 [Lateral]
Bryophaenocladus



BIOUG05610-H04 [Lateral]
Chironomus harpi



BIOUG05515-B03 [Lateral]
Chironomus maturus



BIOUG05515-A04 [Lateral]
Chironomus melanescens



BIOUG05545-H08 [Lateral]
Cricotopus



BIOUG05514-A10 [Lateral]
Cricotopus annulator cplx



BIOUG05628-F11 [Lateral]
Cricotopus bicinctus grp.



BIOUG05504-B05 [Lateral]
Cricotopus sylvestris



BIOUG05512-E08 [Lateral]
Cricotopus tremulus



BIOUG05514-A08 [Lateral]
Cricotopus triannulatus



BIOUG05543-E09 [Lateral]
Microtendipes pedellus grp.



BIOUG05503-D04 [Lateral]
Orthocladus dorenius



BIOUG05514-D06 [Lateral]
Paraphaenocladus impensus



BIOUG05516-G04 [Lateral]
Psectrocladius cf. *limbatellus*



BIOUG05538-D12 [Lateral]
Rheocricotopus robacki



BIOUG05503-A03 [Lateral]
Smittia



BIOUG05503-E12 [Lateral]
Smittia



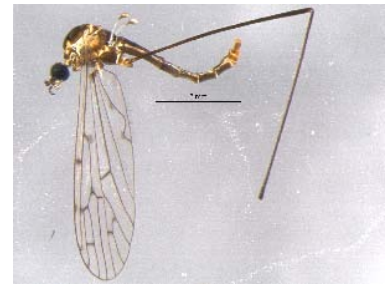
BIOUG05503-C01 [Lateral]
Smittia



BIOUG05522-A01 [Lateral]
Culex restuans



BIOUG05541-C12 [Lateral]
Oeciothea nr. fenestralis



BIOUG05502-D11 [Lateral]
Symplecta



BIOUG05510-H10 [Lateral]
Lonchaea



BIOUG05501-D10 [Lateral]
Helina rufitibia



BIOUG05628-B11 [Lateral]
Phoridae



BIOUG05521-A04 [Lateral]
Phoridae



BIOUG05512-E02 [Lateral]
Phoridae



BIOUG05522-C01 [Lateral]
Megaselia



BIOUG05514-G10 [Lateral]
Megaselia



BIOUG05630-A09 [Lateral]
Psychodidae



BIOUG05501-A03 [Lateral]
Scathophaga furcata



BIOUG05505-H10 [Lateral]
Sciariidae



BIOUG05508-B05 [Lateral]
Sciariidae



BIOUG05514-D03 [Lateral]
Sciariidae



BIOUG05503-C12 [Lateral]
Sciariidae



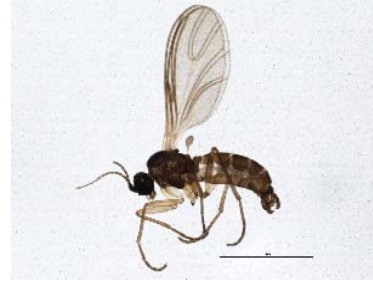
BIOUG05538-G08 [Lateral]
Sciariidae



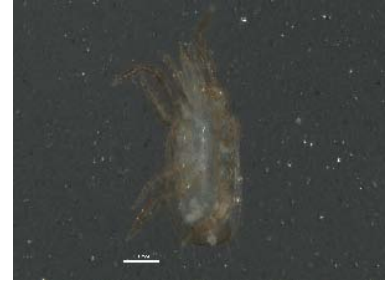
BIOUG05525-G01 [Lateral]
Sciariidae



BIOUG05689-F03 [Lateral]
Scatopsciara



BIOUG05503-F12 [Lateral]
Scatopsciara



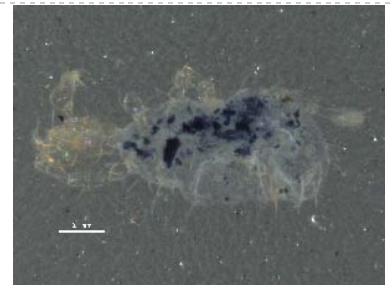
BIOUG05505-C08 [Ventral]
Digamasellidae



BIOUG05525-F10 [Lateral]
Melicharidae



BIOUG05630-E02 [Dorsal]
Parasitidae



BIOUG05630-D10 [Ventral]
Abrolophus



BIOUG05513-F10 [Lateral]
Agonopterix arenella



BIOUG05512-B08 [Dorsal]
Porrhomma terrestre



BIOUG05510-C01 [Dorsal]
Piratulla minuta



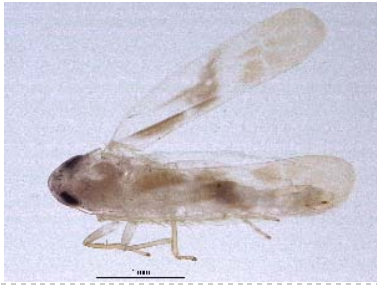
BIOUG05516-E08 [Lateral]
Deuterostomathrus



BIOUG05560-F02 [Dorsal]
Phlaeothripidae



BIOUG05505-B11 [Dorsal]
Taeniothrips inconsequens



BIOUG05628-B02 [Lateral]

Empoasca



BIOUG05724-G09 [Dorsal]

Lygus plagiatus