

School Malaise Trap Program

Species Image Library

The images of the species collected in your Malaise trap are shown below. A single representative for each species was selected to be photographed; in some cases, only a damaged specimen was available.

Re-render images : per page

300 Images Per Page - Pages : 1



BIOUG05560-F07 [Lateral]
Hymenoptera



BIOUG05507-D11 [Lateral]
Diapriidae



BIOUG05599-H06 [Lateral]
Diapriidae



BIOUG05502-B08 [Lateral]
Formica glacialis



BIOUG05507-D08 [Lateral]
Lasius neoniger



BIOUG05551-D11 [Lateral]
Ichneumonidae



BIOUG05556-D01 [Lateral]
Ichneumonidae



BIOUG05505-B08 [Lateral]
Tersilochinae



BIOUG05591-E06 [Lateral]
Platygasteridae



BIOUG05555-C01 [Lateral]
Platygastridae



BIOUG05501-D04 [Dorsal]
Dolerus



BIOUG05528-A10 [Dorsal]
Chaetocnema concinna



BIOUG05520-C10 [Dorsal]
Phyllotreta striolata



BIOUG05560-H05 [Lateral]
Hylesinus criddlei



BIOUG05534-B12 [Dorsal]
Ctenicera



BIOUG05509-H09 [Dorsal]
Latridiidae



BIOUG05510-A05 [Dorsal]
Cyphon laevipennis



BIOUG05533-E06 [Dorsal]
Trixagus



BIOUG05503-G08 [Lateral]
Agromyzidae



BIOUG05511-H05 [Lateral]
Anisopodidae



BIOUG05556-F01 [Lateral]
Sylvicola cinctus



BIOUG05501-A01 [Lateral]
Delia antiqua



BIOUG05502-H06 [Lateral]
Hylemya



BIOUG05501-A02 [Lateral]
Hylemya



BIOUG05513-B03 [Lateral]
Calliphora livida



BIOUG05518-B12 [Lateral]
Pollenia angustigena



BIOUG05501-D07 [Lateral]
Pollenia pediculata



BIOUG05502-H03 [Lateral]
Pollenia vagabunda



BIOUG05507-C10 [Lateral]
Cecidomyiidae



BIOUG05503-B09 [Lateral]
Cecidomyiidae



BIOUG05505-G10 [Lateral]
Cecidomyiidae



BIOUG05503-B03 [Lateral]
Cecidomyiidae



BIOUG05503-B06 [Lateral]
Chironomidae



BIOUG05503-H02 [Lateral]
Chironomidae



BIOUG05514-H06 [Lateral]
Chironomidae



BIOUG05531-B08 [Lateral]
Chironomidae



BIOUG05520-E10 [Lateral]
Chironomidae



BIOUG05503-B05 [Lateral]
Chironomidae



BIOUG05517-B10 [Lateral]
Chironomidae



BIOUG05519-H10 [Lateral]
Chironomidae



BIOUG05514-B04 [Lateral]
Chironomidae



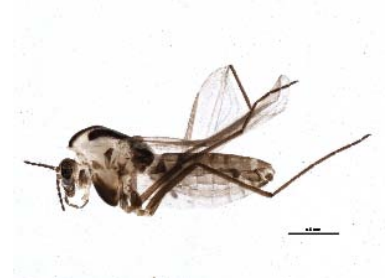
BIOUG05522-A11 [Lateral]
Chironomidae



BIOUG05506-C04 [Lateral]
Chironomidae



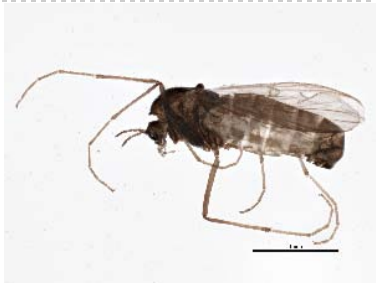
BIOUG05503-A11 [Lateral]
Chironomidae



BIOUG05514-B08 [Lateral]
Chironomidae



BIOUG05586-F08 [Lateral]
Chironomidae



BIOUG05503-A08 [Lateral]
Bryophaenocladus



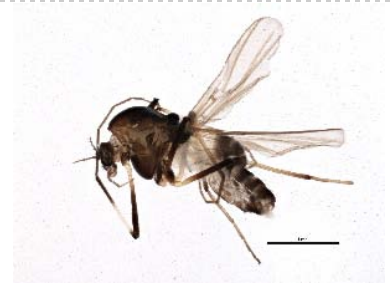
BIOUG05556-F10 [Lateral]
Chironomus



BIOUG05502-A10 [Lateral]
Chironomus cf. decorus



BIOUG05515-A04 [Lateral]
Chironomus melanescens



BIOUG05514-A10 [Lateral]
Cricotopus annulator cplx



BIOUG05519-H08 [Lateral]
Gymnometriocnemus brumalis



BIOUG05538-H11 [Lateral]
Orthocladus



BIOUG05535-B06 [Lateral]
Orthocladus



BIOUG05503-D04 [Lateral]
Orthocladius dorenius



BIOUG05517-F03 [Lateral]
Orthocladius oliveri



BIOUG05538-D12 [Lateral]
Rheocricotopus robacki



BIOUG05503-E12 [Lateral]
Smittia



BIOUG05503-C01 [Lateral]
Smittia



BIOUG05503-E10 [Lateral]
Smittia



BIOUG05517-B12 [Lateral]
Smittia



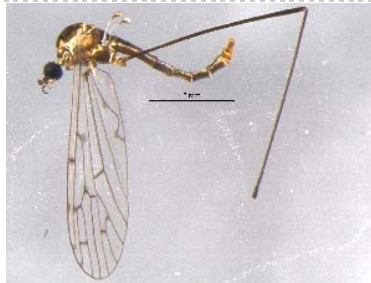
BIOUG05570-H09 [Lateral]
Smittia edwardsi



BIOUG05502-G10 [Lateral]
Thienemanniella xena



BIOUG05508-A10 [Lateral]
Drosophilidae



BIOUG05502-D11 [Lateral]
Symplecta



BIOUG05510-H10 [Lateral]
Lonchaea



BIOUG05747-B02 [Lateral]
Eudasyphora



BIOUG05501-D10 [Lateral]
Helina rufitibia



BIOUG05574-C11 [Lateral]
Phoridae



BIOUG05512-E02 [Lateral]
Phoridae



BIOUG05551-H11 [Lateral]
Phoridae



BIOUG05514-G10 [Lateral]
Megaselia



BIOUG05508-B03 [Lateral]
Psychodidae



BIOUG05501-A03 [Lateral]
Scathophaga furcata



BIOUG05501-A07 [Lateral]
Scathophaga stercoraria



BIOUG05591-F05 [Lateral]
Sciaridae



BIOUG05525-G01 [Lateral]
Sciaridae



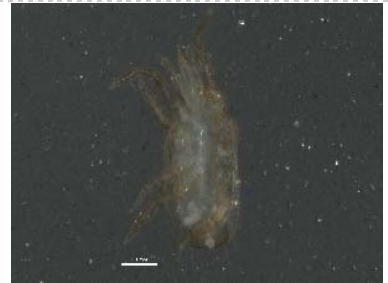
BIOUG05503-F12 [Lateral]
Scatopsiara



BIOUG05518-A01 [Lateral]
Chrysoperla adamsi



BIOUG05556-D07 [Lateral]
Hemerobiidae



BIOUG05505-C08 [Ventral]
Digamasellidae



BIOUG05502-C10 [Lateral]
Dichomeris ligulella



BIOUG05556-D12 [Lateral]
Caloptilia fraxinella



BIOUG05513-A05 [Dorsal]
Mythimna unipuncta



BIOUG05579-F01 [Dorsal]
Pseudexentera spoliata



BIOUG05515-C04 [Dorsal]
Clubiona pallidula



BIOUG05512-C01 [Dorsal]
Pardosa moesta



BIOUG05516-D06 [Lateral]
Entomobrya nivalis



BIOUG05560-F02 [Dorsal]
Phlaeothripidae



BIOUG05505-B11 [Dorsal]
Taeniothrips inconsequens



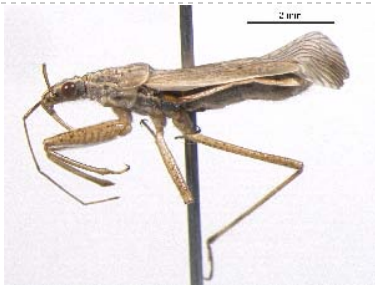
BIOUG05507-F04 [Dorsal]
Empoasca decipiens



BIOUG05502-A09 [Dorsal]
Kleidocerys



BIOUG05724-G09 [Dorsal]
Lygus plagiatus



BIOUG05534-D03 [Lateral]
Nabis americanoferus



BIOUG05501-H02 [Dorsal]
Nabis roseipennis



BIOUG05507-H03 [Lateral]
Psyllidae