

Bryce Canyon

HOODOO



HOODOO-A pinnacle, pillar or odd shaped rock left standing by the forces of erosion

THE BRYCE CANYON NATIONAL PARK NEWSPAPER

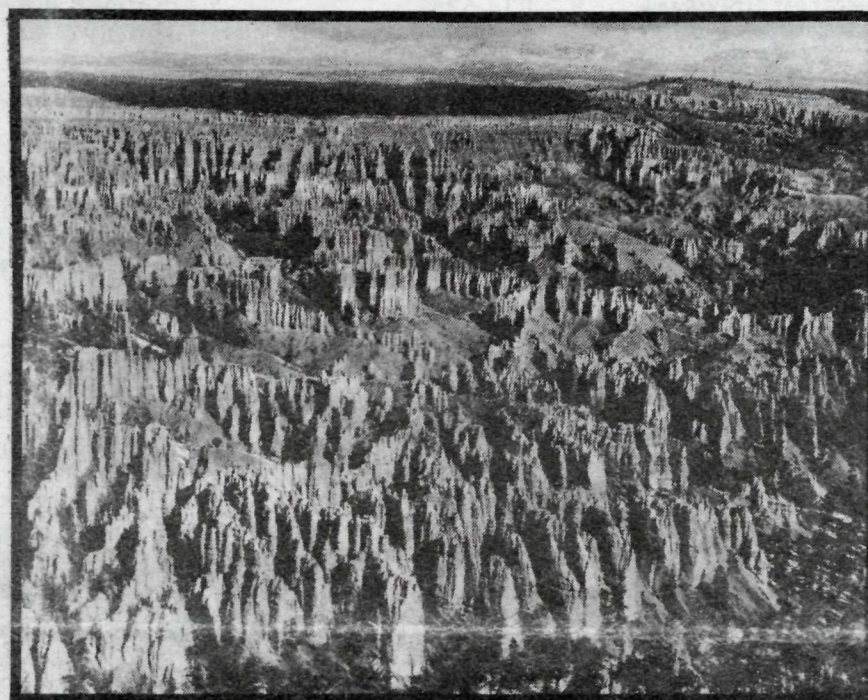
Volume 6 - No. 1

Summer, 1985

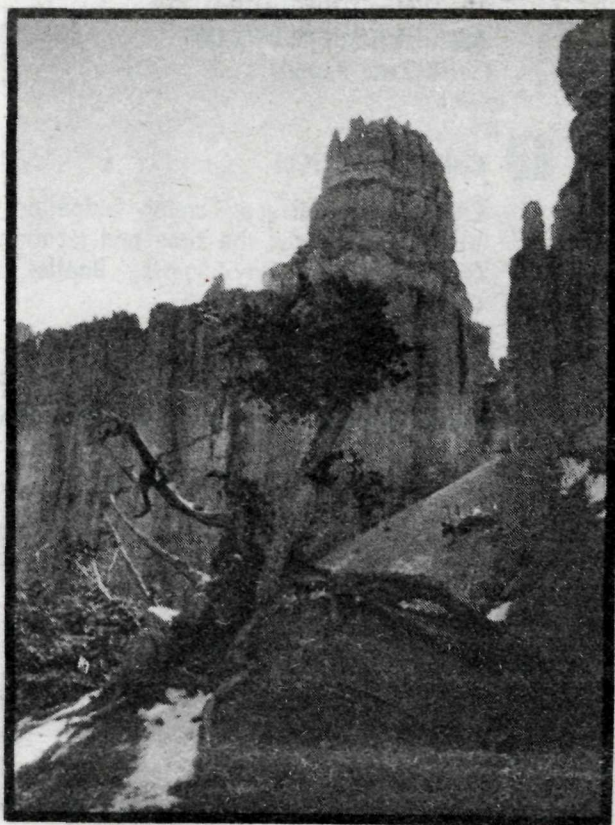
Ode To Bryce

The Canyon-

Towering walls,
Spires,
Minarets,
Twisting, turning,
Looming, zooming
Skyward,
Piercing the blue
with orange and gold.



**Bryce Amphitheater
from Bryce Point**



**Limber pine
on Peekaboo Loop Trail**

The Canyon-

Mystery shapes,
Hoodoos,
Voodoo?
Indian lore.
Shadows creeping,
Colors seeping
Into the earth,
Into my mind.

The Canyon

Siren's song,
Calling,
Touching,
Capturing
My spirit.
And I have touched you
Bryce Canyon.
And I will return.

Rodger Trimm
July, 1984

Pour les visiteurs de Parc qui ne connaîtraient pas l'anglais, une brochure imprimée en français est disponible au Centre des Visiteurs. Nous espérons qu'elle contribuera à rendre votre séjour dans le Parc plus intéressant et nous vous souhaitons une visite agréable et sans accident à Bryce.

Für Besucher aus Deutschland, die nicht englisch sprechen, ist eine Broschüre, in deutsch, im Besucherzentrum erhältlich. Wir hoffen, dass dieses Informationsblatt ihnen zu einem interessanten, sicheren und angenehmen Besuch verhelfen wird.

**SEE PAGES 4 & 5
TO PLAN YOUR
BRYCE VISIT**

SERVICES / FACILITIES

LODGING

BRYCE CANYON LODGE 834-5361
 BEST WESTERN RUBY'S INN 834-5341
 BRYCE CANYON PINES 834-5336
 PINK CLIFFS VILLAGE 834-5303

RESTAURANTS

BRYCE CANYON LODGE 834-5361
 BEST WESTERN RUBY'S INN 834-5341
 BRYCE CANYON PINES 834-5336
 FOSTER'S STEAK HOUSE 834-5227
 LOGGER'S INN 834-9284
 PINK CLIFFS VILLAGE 834-5303
 TROPIC — 11 MILES
 DOUG'S CAFE 679-9632
 SHINGLETOWN SANDWICH SHOP
 DRIVE-THRU RESTAURANT 679-8646

CAMPING

BRYCE CANYON 834-5322
 NORTH CAMPGROUND
 SUNSET CAMPGROUND
 —No Hookups
 14 Days/Year - Camping Limit
 Group Campsites Require Reservations
 BEST WESTERN RUBY'S INN 834-5341
 BRYCE CANYON
 COUNTRY CAMPGD. 834-5218
 PINK CLIFFS VILLAGE 834-5303
 U.S. FOREST SERVICE CAMPGROUND 676-8815
 RED CANYON 14 Miles
 KING'S CREEK/Tropic Reservoir 14 Miles
 PINE LAKE 22 Miles

GROCERIES, SOUVENIRS

BRYCE CANYON CAMPER STORE 834-5361
 (At Sunrise Point)
 BEST WESTERN RUBY'S INN 834-5341
 BRYCE CANYON
 COUNTRY STORE. 834-5218
 FOSTER'S SUPERMARKET 834-5227
 PINK CLIFFS VILLAGE 834-5303
 TROPIC - 11 miles
 AHLSTROM'S GROCERY 679-8633
 COUNTRY MALL 679-8502

LAUNDRY, SHOWERS

BRYCE CANYON CAMPER STORE
 (At Sunrise Point)
 BEST WESTERN RUBY'S INN
 BRYCE CANYON COUNTRY CAMPGROUND
 PINK CLIFFS VILLAGE

SERVICE STATIONS - Gas & Oil

BRYCE CANYON - Chevron 834-5361
 (In Park)
 BEST WESTERN RUBY'S INN - Texaco 834-5341
 BRYCE CANYON COUNTRY STORE
 Phillips 66 834-5218
 BRYCE CANYON PINES - Texaco 834-5336
 FOSTER'S - Phillips 66 834-5227
 24 hr. AAA towing,
 full time mechanic
 propane
 PINK CLIFFS - Chevron 834-5256
 24 hr. AAA towing

FIRST AID

BRYCE CANYON VISITOR CENTER

HANDICAPPED ACCESS

Most park buildings and viewpoints are accessible to persons in wheelchairs. All restrooms have handicapped stalls.

The 1/2 mile section of trail, between Sunset and Sunrise points, is level and paved. It is easily accessible for people in wheelchairs or those who have difficulty walking.

PUBLIC TELEPHONES - In Park

BRYCE CANYON VISITOR CENTER
 BRYCE CANYON LODGE
 BRYCE CANYON STORE
 SUNSET CAMPGROUND
 PARK GAS STATION

HORSEBACK RIDING

BRYCE CANYON ZION TRAIL RIDES 834-5219
 (At Bryce Lodge)
 BEST WESTERN RUBY'S INN
 TRAIL RIDES 834-5341
 RED CANYON TRAIL RIDES 834-5336

POSTAL SERVICES

BRYCE CANYON LODGE 834-5361
 (May - September)
 BEST WESTERN RUBY'S INN 834-5341
 (Year Round)

CHURCH SERVICES

Check at the Bryce Canyon Lodge or the Visitor Center for the time and location of Catholic, Latter-Day Saints, Baptist and Christian Ministry.



Douglas fir cone

★ **OTHER ACTIVITIES** ★
OUTSIDE THE PARK

RODEO — EVERY WED., FRI., & SAT.
 AT RUBY'S INN

HAYRIDE ON WAGON PULLED
 BY CLYDESDALE HORSES
 —DAILY AT SUNSET—
 AT BRYCE CANYON PINES

BARBECUE — POOLSIDE
 WED., FRI., SAT. — 5:30 - 9 P.M.
 AT PINK CLIFFS VILLAGE

HELICOPTER RIDES — CHARTER FLIGHTS
 DAILY AT BEST WESTERN RUBY'S INN

AIRPORT:

Bryce Canyon Airport — 4 miles from park
 - aviation fuel — jet fuel, 100 AV gas
 available year round
 - Flight Service Station on field
 - restrooms
 - hangar/tie-downs

**EMERGENCY
 PHONE NUMBERS**

PARK EMERGENCIES 834-5231
 (Police, Fire, Ambulance)
 If no answer, call collect:
 GARFIELD COUNTY
 EMERGENCY DISPATCH 1-676-2411

OTHER PHONE NUMBERS

GARFIELD MEMORIAL HOSPITAL
 IN PANGUITCH (25 mi.) 1-676-8811
 GARFIELD COUNTY SHERIFF 1-676-2678
 UTAH HIGHWAY PATROL
 EMERGENCIES 1-800-662-5151
 ROAD CONDITIONS 1-586-7619

The Bryce Canyon Hoodoo is published by the Bryce Canyon Natural History Association in cooperation with the National Park Service. The Bryce Canyon Natural History Association is a non-profit organization working in conjunction with the National Park Service in programs of interpretation, education and research at Bryce Canyon National Park.

BRYCE - A YEAR ROUND PARK



Cross Country Skiing Along the Rim Trail

Many visitors are surprised to learn that Bryce Canyon is open every day of the year. All park roads remain open throughout the winter, except for short periods during or immediately following heavy snow storms.

During the winter, the park lodge is closed, but lodging is available all year at motels just outside the park. One loop of North Campground also remains open throughout the winter. The Visitor Center is open every day except Christmas.

A winter visit to Bryce can be pleasant - no summer crowds to fight for parking spaces, campsites, or motel rooms. Winters at Bryce are cold. Snows may arrive briefly in October, deepen in November and linger until March or April. Low clouds and snow sometimes obliterate canyon views, but most winter days are crisp and clear.

Cross-country skiers find excellent conditions around the top of the plateau. The Rim Trail between Fairyland and Bryce Point is an especially popular ski tour. The Paria Ski Trail offers a chance to ski a 5 mile loop through forest and meadow. From Rainbow Point, the one-mile Bristlecone Loop Trail is marked for winter use. Have you ever tried snowshoeing? Snowshoes are loaned to adventurous visitors on a first come-first served basis while snow conditions permit. Snowmobiling is not allowed in the park.

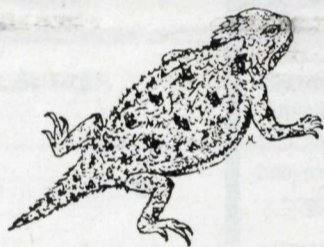
The National Park Service invites you to attend the naturalist programs/activities offered at Bryce. These programs/activities will help you understand how Bryce Canyon was formed and learn about the variety of plants and animals that live here.

Sturdy boots or shoes, a hat, and water are recommended for all hikes.

Bring a jacket and flashlight for all evening programs. During bad weather, evening programs will be moved indoors.

ROUND TRIP mileages and times are listed.

Activity times are for the period from May 25 through September 2, 1985, but are subject to change. Check park bulletin boards or the Visitor Center for current schedules.



Mountain Short-horned lizard

ONE OF THESE HIKES IS OFFERED DAILY 9:00 a.m.

NAVAJO TRAIL HIKE

With a naturalist, descend to the bottom of the canyon between narrow canyon walls past the Two Bridges. Follow the trail up to Wall Street, where you can see towering Douglas firs and the 1984 rock slide.

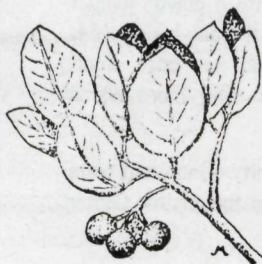
2.2 miles 3.5 kilometers 2½ hours

QUEEN'S GARDEN HIKE

A naturalist leads this hike from Sunrise Point down the easiest trail into the canyon. The trail descends into the Queen's Garden - an area with many colorful, delicate formations, including Queen Victoria.


1½ miles 2.4 kilometers 2-2½ hours

Greenleaf Manzanita




NATURALIST ACTIVITIES


DAILY ACTIVITIES

GEOLOGY TALK  12:30 p.m.
A 20 minute naturalist talk at Sunset Point explains why Bryce Canyon looks like it does. This information is also discussed on other naturalist-guided walks.

BRISTLECONE LOOP WALK 3:00 p.m.
On this easy to moderate loop walk, along the plateau top, discuss the fir-spruce forest community, including bristlecone pines. Also discuss air quality and other park issues. Meet at Rainbow Point.
1 mile 1.6 kilometers 2 hours

RIM WALK  7:30 p.m.
Enjoy evening colors in the canyon on an easy, level trail along the rim from the Bryce Lodge. Discuss geology and natural history. Especially for visitors who are unable to hike into the canyon.
1 mile 1.6 kilometers 1-1½ hours

EVENING PROGRAMS 9:00 p.m.
Every evening at dusk, naturalists present slide programs on any of a variety of subjects, at both of the campground amphitheatres. Check the schedule for time and place. 1 hour

 Sunset Amphitheater is accessible to wheelchairs with assistance (unpaved trail).

THREE TIMES A MONTH:

MOONLIGHT WALK 9:00 p.m.
Each month, on the 3 evenings preceding the full moon, a naturalist guides a maximum of 25 people into the canyon. Experience the canyon in darkness and watch it transformed as the moon rises. Sign up at the Visitor Center.
2 miles 2.8 kilometers 2 hours

Don't forget you can enjoy Bryce by moonlight on your own at other times of the month as well.

ONE WALK DAILY

SPECIAL WALKS 1:30 p.m.
Every day, a naturalist presents a special walk to a less-visited area of the park. These areas are off the beaten path, and can be difficult to find without a naturalist to guide you.

Some of the walks are quite strenuous, and are not recommended for children or anyone who is not in good physical condition. For most of these walks, you will need to provide your own transportation. Because of the terrain covered on these walks, we limit the number of visitors, so you may sign up ahead of time at the Visitor Center.


Some of the walks offered during past summers are listed below. Check the schedules for this summer's activities. Meet at the Visitor Center.

MOSSY CAVE
A moderately strenuous hike to a small cave-like overhang where an abundance of moss grows. The trail follows a large stream used for irrigation below the park.
1½ miles 2.4 kilometers 2½-3 hours

JOLLEY HOLLOW
An easy hike along a small stream leading into a cool, shady box canyon. At the end of the canyon, a large spring is surrounded by moss and other stream-side vegetation.
1½ miles 2.4 kilometers 2½-3 hours

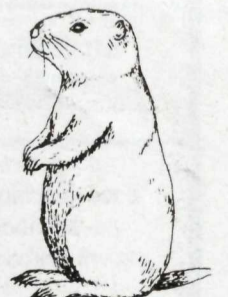
BOAT MESA
Hike from Fairyland Point up to the top of a flat mesa in the Bryce Amphitheater. Walk a loop trail through a pinyon-juniper forest with excellent views of the canyon and surrounding area.
2½-3 miles 4.8 kilometers 2½-3 hours

SWAMP CANYON
A moderately strenuous hike through a forested area of the canyon. The trail goes down an old river drainage that has been carved out by headward erosion. A small spring and many birds can be found along this trail.
2 miles 2.8 kilometers 2½-3 hours

PRAIRIE DOG WALK  Times will vary
Visit a prairie dog town and learn more about this fascinating threatened species.
¼ mile .4 kilometer 1½-2 hours



Utah White tailed Prairie Dog



JUST FOR CHILDREN 2:30 p.m.
Several times a week, naturalists offer 1-2 hour activities, especially for children ages 5-10 years. Subjects vary, but actively involve the children. Sunrise Nature Center.

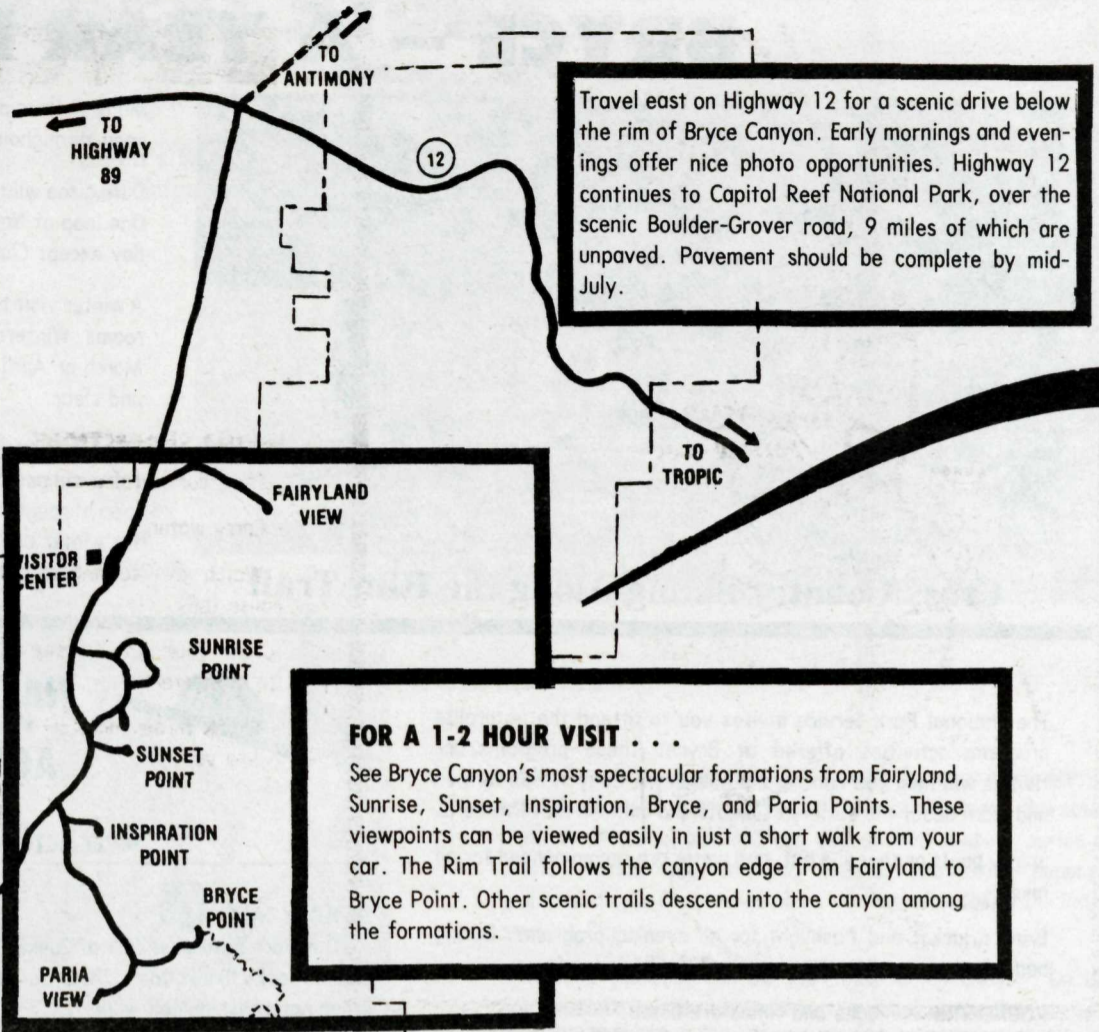
WHAT TO SEE AND DO IN BRYCE CANYON

WHERE TO BEGIN . . .

Begin your visit at the Visitor Center just past the entrance station. A slide show, museum exhibits and publications will help you learn about the park. The people on duty are friendly, knowledgeable and helpful.

If you are towing a trailer, you must leave it at the Visitor Center parking lot. Road grades are steep and parking areas are small beyond Sunset Campground.

Medical and other emergencies should be reported to the Visitor Center or any park ranger.



Travel east on Highway 12 for a scenic drive below the rim of Bryce Canyon. Early mornings and evenings offer nice photo opportunities. Highway 12 continues to Capitol Reef National Park, over the scenic Boulder-Grover road, 9 miles of which are unpaved. Pavement should be complete by mid-July.

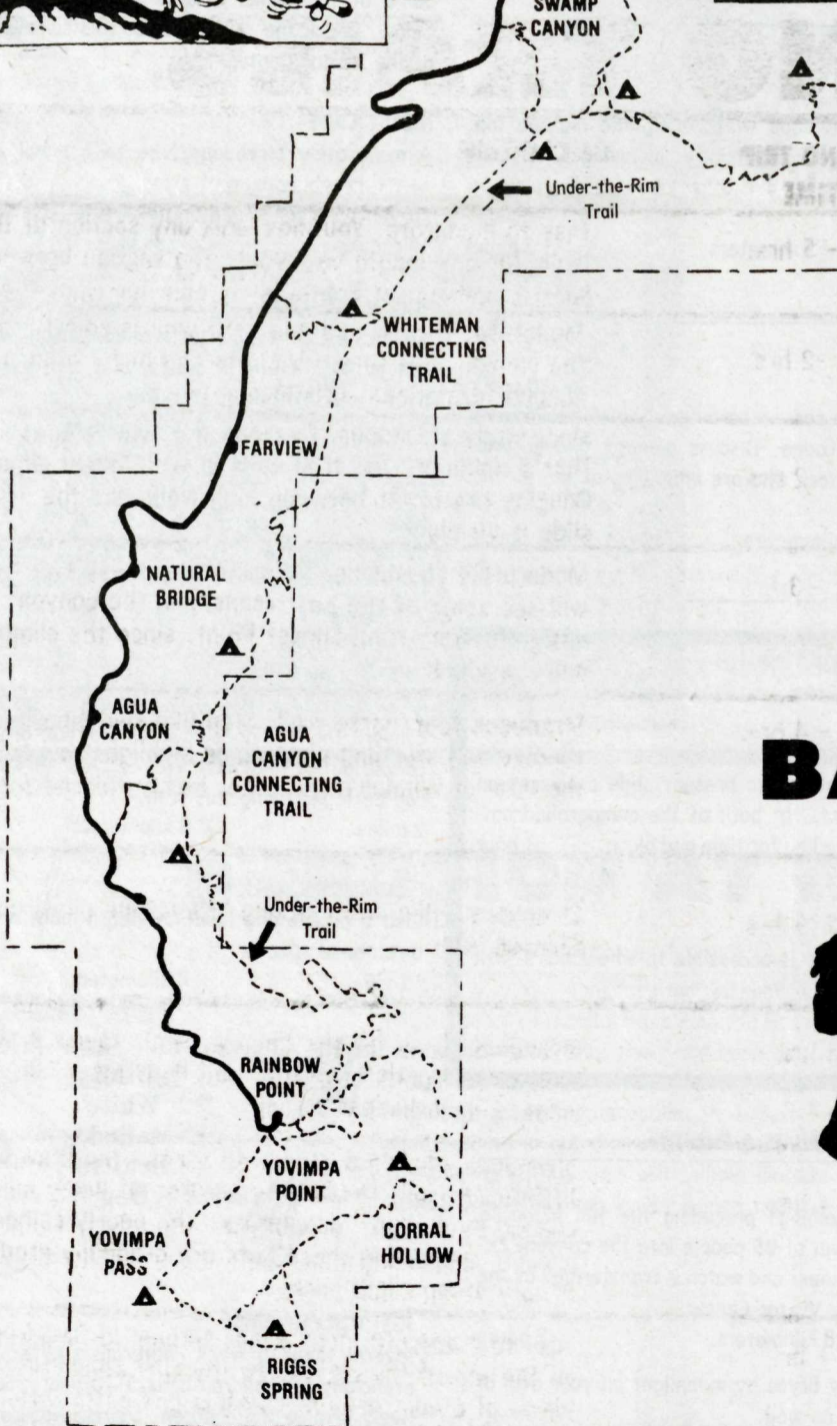
FOR A 1-2 HOUR VISIT . . .

See Bryce Canyon's most spectacular formations from Fairyland, Sunrise, Sunset, Inspiration, Bryce, and Paria Points. These viewpoints can be viewed easily in just a short walk from your car. The Rim Trail follows the canyon edge from Fairyland to Bryce Point. Other scenic trails descend into the canyon among the formations.

FOR A 3-4 HOUR VISIT OR LONGER . . .

Explore the southern end of the park by following the main road along the rim for 15 miles to Rainbow and Yovimpa Points. Along the way, stop at the Natural Bridge, Agua Canyon and other viewpoints with outstanding views across eastern and southern Utah.

The elevation rises from 8,000 feet at the Visitor Center to 9,100 feet as you drive south. The forest changes from ponderosa pine to spruce, fir, and aspen in the cooler uplands. The road ends at Rainbow and Yovimpa Points where there are exhibits, picnic tables and restrooms.



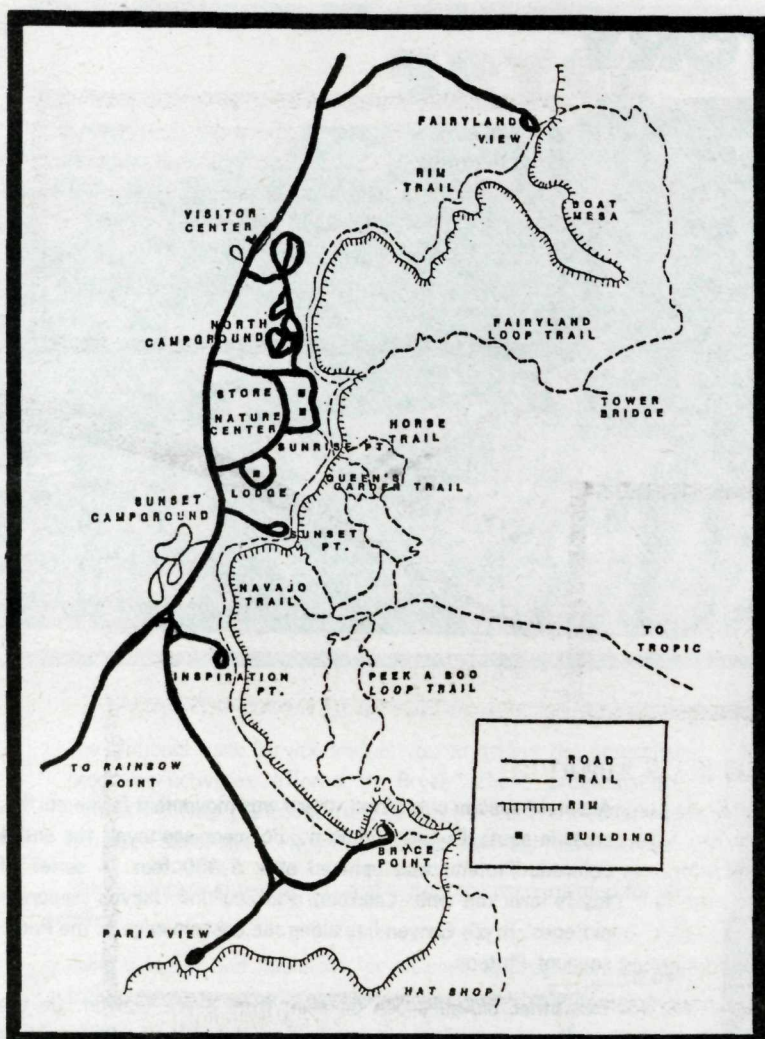
HIKING THE BACKCOUNTRY

Only a very small percentage of the visitors to Bryce Canyon venture into the backcountry. Over 35 miles of backcountry trails wind through scenery that is different, but no less spectacular than the main Bryce Amphitheater.

The two main backcountry trails — the Under-the-Rim Trail and the Riggs Spring Loop — descend below the rim into a pinyon-juniper-ponderosa forest. Unlike the day hiking trails, the backcountry trails do not pass among clusters of hoodoos, but offer more distant views of the Pink Cliffs.

Obtain the required permit, a map and water availability information at the Visitor Center.

BRYCE HIKING TRAILS

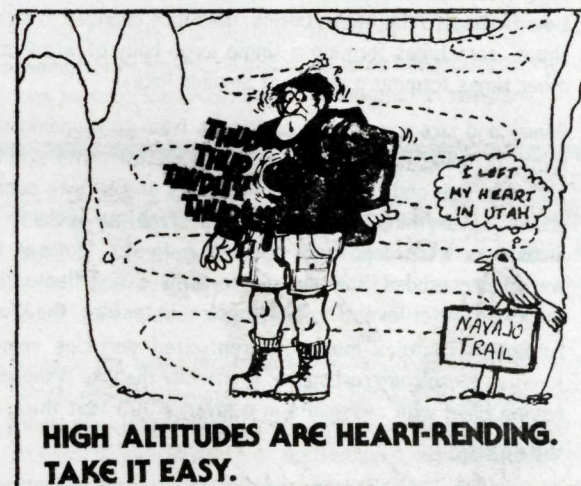


HIGH ALTITUDE

Here, at an altitude of 8000 feet (2438 m), many visitors experience health related problems. Breathing difficulties, dizziness, and nausea may be symptoms of altitude sickness, or other, sometimes serious conditions. Persons with known heart, lung or breathing problems should be especially careful at this elevation.

HIKING SUGGESTIONS

- Wear comfortable shoes or boots, and a hat.
- Carry water.
- Watch your footing on trails — small rocks can cause falls.
- Take your time — the elevation is 8000 feet or 2438 meters.
- NEVER throw rocks — there are trails and hikers below you.



DAY HIKING TRAILS

TRAIL	STARTING POINT	ROUND TRIP DISTANCE	ASCENT	ROUND TRIP TIME	DESCRIPTION
RIM TRAIL	Anywhere along the rim	17.7 km 11.0 mi	168 m 550 ft	4 - 5 hrs.	Easy to moderate. You may walk any section of the rim trail, for any length you want. The section between Sunrise and Sunset Points is suitable for wheelchairs.
QUEEN'S GARDEN	Sunrise Point	2.4 km 1.5 mi	98 m 320 ft	1 - 2 hrs.	Moderate. Easiest and one of the most colorful trails into the canyon. See Queen Victoria and many other delicately shaped formations. Bristlecone pines.
NAVAJO TRAIL	Sunset Point	3.5 km 2.2 mi	159 m 521 ft	1 - 2 hrs.	Moderately strenuous. Descend the Two Bridges side past Thor's Hammer. The trail ends in Wall Street where Douglas firs tower between high walls and the 1984 rock slide is visible.
QUEEN'S GARDEN / NAVAJO TRAIL COMBINATION	Sunset Point OR Sunrise Point	4.8 km 3.0 mi	159 m 521 ft	2 - 3 hrs.	Moderately strenuous. By combining these two trails, you will see some of the best scenery in the canyon. It is easier to start from Sunset Point, since the climb out is more gradual.
PEEKABOO LOOP	Bryce Point OR Sunset Point OR Sunrise Point	8.0- 11.3 km 5-7 mi	153- 244 m 500- 800 ft	3 - 4 hrs.	Strenuous foot/horse trail. Step-like switchbacks sudden tunnels and startling panoramas highlight this trail. See the Wall of Windows and other highly colored formations.
TOWER BRIDGE	North of Sunrise Point	4.8 km 3.0 mi	2244 m 800 ft	2½ hrs	Strenuous. Hike down among bristlecone pines and by the Chinese Wall.
FAIRYLAND LOOP	Sunrise Point OR Fairyland View	12.9 km 8.0 mi	650- 900 ft	5 hrs.	Strenuous. Look for the Chinese Wall, Tower Bridge, the remains of Oastler's Castle, and Boat Mesa. Bristlecone pines, pinyon-juniper forest.
TRAIL TO THE HAT SHOP	Bryce Point	6.0 km 3.8 mi	275 m 900 ft	4 hrs.	Strenuous. Here's a chance to escape the crowds on a little-used trail. Descent to an area of many pillars, each capped by a "hat" or caprock. The poorly cemented gravels supporting these hats are gradually eroding away. A very steep climb back.
BRISTLECONE LOOP TRAIL	Rainbow Point	1.6 km 1.0 mi	31 m 100 ft	1 hr.	Easy to moderate. Trail winds through a fir-spruce forest on the top of the plateau to the cliff edge. Dramatic views of a vast area of canyons and cliffs, Bristle cones.

THE GEOLOGICAL STORY

SOUTHERN UTAH SCENERY

Southern Utah has some of the most varied and unusual scenery found anywhere in the world. Snow-capped peaks, timbered mesas, mountain meadows ablaze with wildflowers, colorful canyons, and arid deserts lie almost side by side.

Bryce Canyon National Park lies in the middle of this spectacular country. Here, discover one of the most colorful and delicately carved landscapes to be seen anywhere. Discover also, the story behind this fantastic landscape.

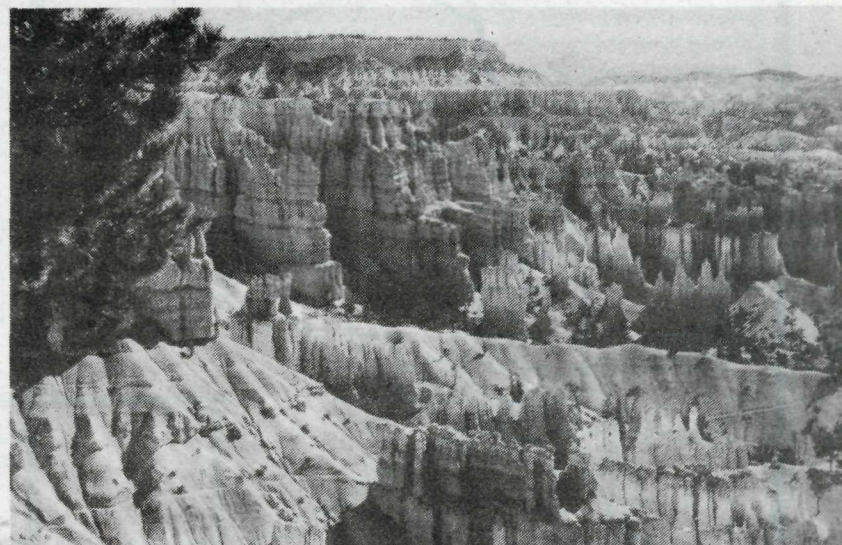
DEPOSITION

About 60 million years ago in the Bryce area, sea-level basins separated low uplands. For millions of years a large lake called Lake Flagstaff filled these basins. This lake changed in size and shape, sometimes forming a single large body of water and at other times forming a series of smaller lakes.

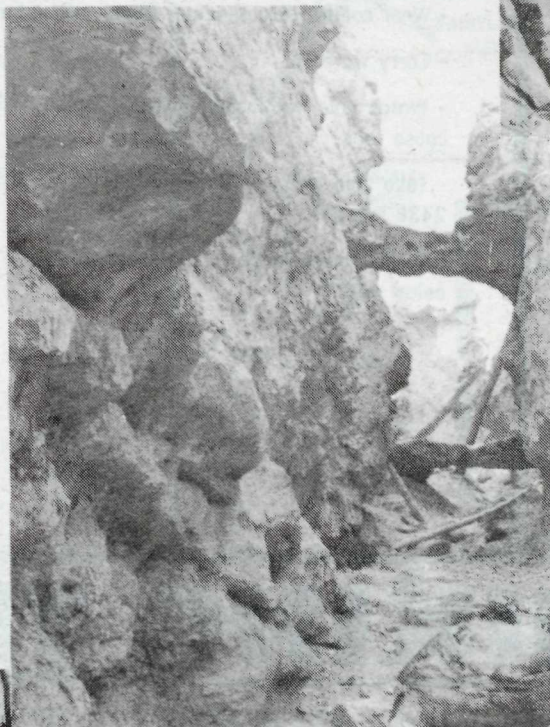
Rivers and streams carried sediments from surrounding mountains, dumping their loads into Lake Flagstaff. The sediments varied in size and type from limey clays and silts to sand and gravel. Everything from pure limestone to calcium rich mudstones were deposited, depending on the features which were being eroded, the climatic conditions, and fluctuation of the lake's water level. Far from uniform in texture, the Wasatch Formation contains many different-sized particles cemented together by calcium carbonate. Eventually the lake disappeared, having filled with sediments in a layer 2,000 feet thick.

VULCANISM

A period of violent volcanism followed, covering large areas of southern Utah with volcanic rock. While no volcanic rock can be found in the park, the Black, Henry, and Navajo Mountains can be seen on the north and east horizons. The closest lava flows can be seen along the Sevier Fault at the entrance to Red Canyon, and toward Cedar Breaks.



Queen's Garden from Sunset Point



Two Bridges Navajo Trail

UPLIFT

About 16 million years ago, there was movement in the earth's crust in southern Utah. From a point near sea level, the entire Colorado Plateau was uplifted over 5,000 feet. A series of faults cracked the Colorado Plateau into seven separate plateaus. Bryce Canyon lies along the eastern edge of the Paunsaugunt Plateau.

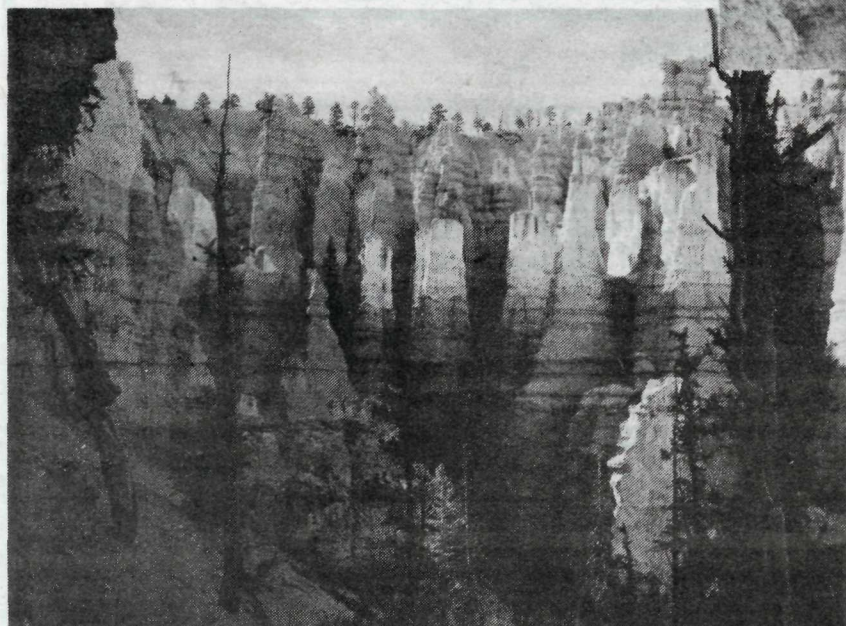
Two other plateaus can be seen from Bryce Canyon. On the northeastern horizon, vertical movement along the Paunsaugunt Fault lifted the Aquarius Plateau 2,000 feet higher than Bryce Canyon. The Paria River has continued carving out the valley between the two plateaus. To the west lies the tilted Markagunt Plateau with Cedar Breaks National Monument and Brian Head.

Faulting (movement in the earth's crust) occurs over long periods of time, sometimes moving only inches at a time. These forces are still active in this area, although earthquakes are not common.

The uplifting of southern Utah steepened gradients, increasing the velocity of rivers and streams which traversed the area. The Paria River drainage system cut through the most recently deposited layers of lava and conglomerate, baring the Wasatch limestone.

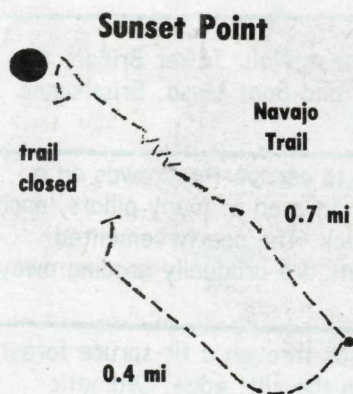
THE CANYON TODAY

Erosion continues today with water, ice, and snow carving the variety of formations at Bryce Canyon. Each day, eroding rock particles expose white limestone, often colored red or orange by iron oxides. All of this has created the fantastically colored and carved landscape around you.

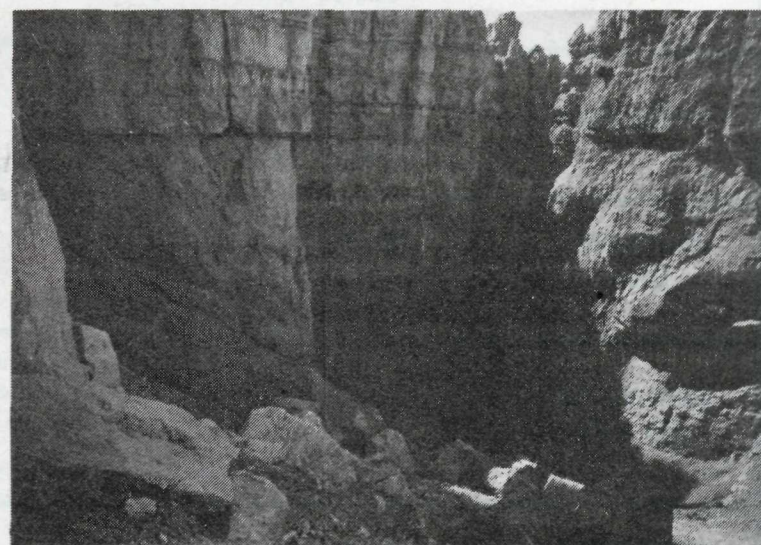


Silent City from below the rim

EROSION AT WORK



On April 4, 1984, a visitor reported that he had to climb over a large number of rocks while hiking the Navajo Loop Trail. That's how we found out that there had been a rock slide on the Wall Street side of the trail. Since then, that portion of the trail has remained closed to the public. In August 1984, another rock slide occurred in approximately the same area. Because of the unstable rock, the area will remain closed indefinitely. The Navajo Trail is now no longer a loop trail.



Rock Slide — Navajo Trail

NEW LOOK AT THE BRYCE LODGE

The historic Bryce Canyon Lodge has provided services to park visitors for over 60 years. This year these services have been improved by the addition of 70 new motel units and the renovation of 40 existing historic cabins.

These new facilities are a result of a 2.5 million dollar investment by TW Services, a private company that, through contract with the National Park Service, provides visitor services at Bryce Canyon, Zion, and Grand Canyon, North Rim. In addition to overnight accommodations, TW Services also operates a restaurant, gift shop, service station, and camper store at Bryce Canyon.

During the next few years, the National Park Service will continue to upgrade the historic buildings that provide services to park visitors. Funds for these improvements will come from the fees paid by companies, such as TW Services, that operate businesses in the parks. This improvement program will insure that the Bryce Canyon Lodge will provide high quality service to visitors for another 60 years.

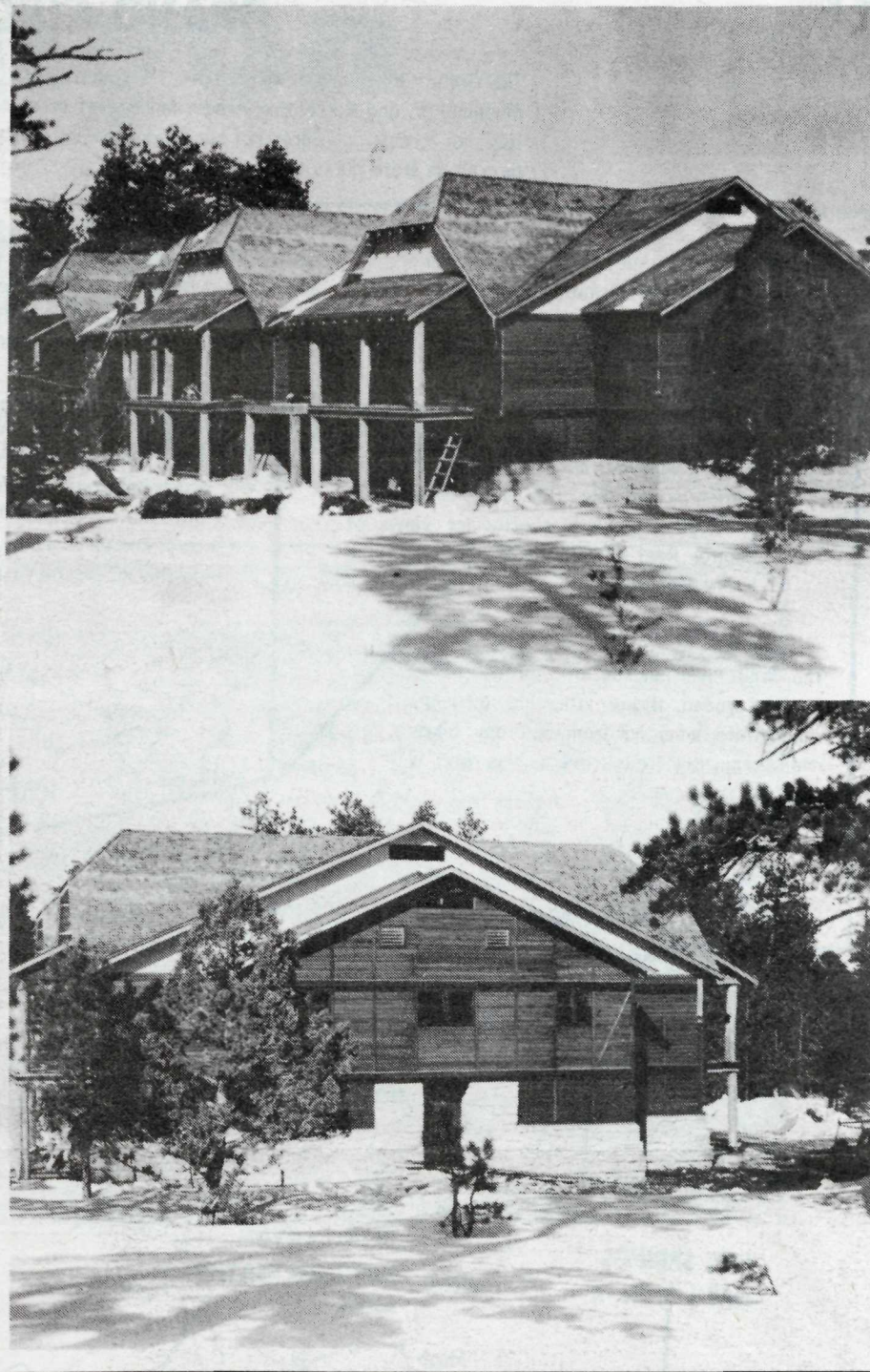
**At Bryce Canyon, you can see
81 miles (130 km) or more
90% of the time.**

Planning to camp?

The two park campgrounds, North and Sunset, have a total of 230 sites available on a first-come, first-served basis. A \$5 per night fee is charged. Persons over 62 years of age with a Golden Age Passport or persons with a Golden Access Passport pay \$2.50 per night.

1. Each campsite is limited to 6 people, and a maximum of 2 vehicles, and 2 tents. Park only on the paved parking areas.
2. Camp only in designated sites and keep tents and trailers within the campsite.
3. Don't dig holes or trenches at the campsite.
4. Build fires only at the fireplace. Burn only wood. Garbage should be put in the trash dumpsters at the campground entrances.
5. Keep your pets on a leash & clean up after them.
6. Don't dump water or wastes on the ground. Wash water can be poured down the outside sinks and sewage should be disposed of at the dump station.
7. Pick up all refuse. Leave a clean campsite.
8. Observe the 10 P.M. to 6 A.M. quiet hours.
9. Do not gather firewood in the park. In a natural area, the fallen wood should be left to return its energy and nutrients to the forest ecosystem. You can buy firewood at the park gas station.

New Motel units at Bryce Lodge



"But Ranger, My Car Was Locked ..."

Crime can occur even in a place like Bryce Canyon. A few simple precautions will help you protect your property.

Thieves can open **locked** cars in seconds. Always carry your valuables with you whenever possible.

Lock items in the trunk or cover them — if you must leave them in the car — at a different location than where you are leaving the vehicle. A thief might be watching you there.

Mark all your property with your social security number or other identifying mark, so it is easily identifiable.

Report suspicious activities, license numbers or descriptions to Rangers.



CHIPMUNKS CAN CARRY DISEASE

Rodents are potential sources of diseases that can be transmitted to humans. At Bryce Canyon, chipmunks and squirrels are known carriers of relapsing fever, and prairie dogs suffer periodic epidemics of plague. Although human cases of these diseases are rare, it is possible for ticks and fleas to pass these diseases from sick animals to humans. The best advice is to avoid close contact with rodents and their nests or burrows.



**NO PETS ALLOWED
IN THE CANYON**

