



**Filed as *Melochia lupulina* Sw. [family
STERCULIACEAE]**

<http://plants.jstor.org/specimen/k000380932>

<http://www.jstor.org>

Your use of the JSTOR archive indicates your acceptance of JSTOR's Terms and Conditions of Use, available at <http://www.jstor.org/page/info/about/policies/terms.jsp>. JSTOR's Terms and Conditions of Use provides, in part, that unless you have obtained prior permission, you may not download an entire issue of a journal or multiple copies of articles, and you may use content in the JSTOR archive only for your personal, non-commercial use.

Please contact the contributing partner regarding any further use of this work. Partner contact information may be obtained at <http://plants.jstor.org/page/about/plants/PlantsProject.jsp>.

Each copy of any part of a JSTOR transmission must contain the same copyright notice that appears on the screen or printed page of such transmission.

JSTOR is a not-for-profit service that helps scholars, researchers, and students discover, use, and build upon a wide range of content in a trusted digital archive. We use information technology and tools to increase productivity and facilitate new forms of scholarship. For more information about JSTOR, please contact plants@jstor.org.

Filed as *Melochia lupulina* Sw. [family STERCULIACEAE]

Collector	Triana, J., No# s.n.
Locality	Nouvelle Grenade. La vieja, Vallée du Cauca.
Country	Colombia (Colombia)
Collection altitude	1000
Identifications	Anomorpha waltherioides H.Karst. & Triana [family STERCULIACEAE]; <i>Melochia inflata</i> (Kunth) Benth. [family STERCULIACEAE]; <i>Mougeotia inflata</i> Kunth [family STERCULIACEAE]; <i>Melochia lupulina</i> Sw. [family STERCULIACEAE] (stored under name);
Notes	With K000380933.
Repository	, K000380932

<http://plants.jstor.org/specimen/k000380932>

ROYAL BOTANIC GARDENS KEW

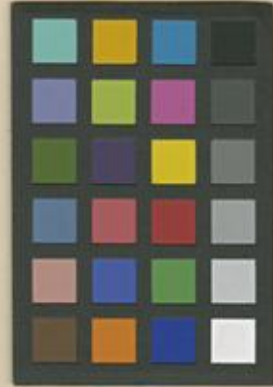


K000380932

ROYAL BOTANIC GARDENS KEW



K000380933



VOYAGE DE J. TRIANA
1851-1857

Melanophthalma wallisii Triana
Melochia inflata HBK

La rosière
Vallon de l'Annonce
NOUVELLE-GRENADE. — Prov. de Cauca, de
banquet 1000 m. — Flor. N°

Melanophthalma wallisii Triana & Hooker
in plant. nov. griseb.
Melochia inflata HBK



769
Flora Neograndina-Caucana.
LEON I. P. HORTON 1853