

***Dimelaena thysanota* in the Joshua Tree National Park (California, U.S.A.)**

**Map collection**



*Dimelaena thysanota*. Photo by Jana Kocourková

**Kerry Knudsen, Kocourková Jana\***

\*Czech University of Life Sciences Prague, Faculty of Environmental Sciences, Department of Ecology, Czech Republic

© 2012

**Abstract** – *Dimelaena thysanota* is known only in western North America. It is a common montane species in California, tolerating arid habitats. It is documented by 13 collections in the Mojave Desert in Joshua Tree on basalt, granite and gneiss. The lichenicolous fungus *Endococcus oreinae* was previously discovered growing on *D. thysanota*, a new host, in Joshua Tree National Park. The map of distribution of *D. thysanota* in Joshua Tree National Park is presented. We compiled a detailed list of records based on GPS data.

**Key words** – *Dimelaena thysanota*, lichens, map of distribution, montane and arid habitat, *Endococcus oreinae*, Mojave Desert

**Authors** – Kerry Knudsen<sup>1</sup>, Kocourková Jana<sup>2</sup>

<sup>1</sup>The Herbarium, Department of Botany & Plant Sciences, University of California Riverside, California 92521, U.S.A. – e-mail: Knudsen@ucr.edu

<sup>2</sup>University of Life Sciences Prague, Department of Ecology, Faculty of Environmental Sciences, Kamýcká 129, Praha 6 – Suchbát, CZ – 165 21, Czech Republic – e-mail: kocourkovaj@fzp.czu.cz

### ***Dimelaena thysanota* (Tuck.) Hale & W.I. Culberson**

DESCRIPTION. – Mayrhofer and Sheard 2004.

WORLD DISTRIBUTION. – Western North America.

SUBSTRATE. – Non-calcareous rock; on basalt, gneiss, and granite in Joshua Tree.

NOTES. – *Dimelaena thysanota* is a common montane species in California, tolerating arid habitats. It is documented by 13 collections in the Mojave Desert in Joshua Tree. It has been reported from the Granite Mountains (Knudsen and Werth 2008). The lichenicolous fungus *Endococcus oreinae* Hafellner was discovered growing on *D. thysanota*, a new host, in Joshua Tree National Park (Kocourková et al. 2012).

DISTRIBUTION. – Hidden Valley, Juniper Flats, Little San Bernardino Mountains (Pushwalla), Lost Horse Mountains (on basalt), Lost Horse Valley, lower and upper Covington Flats, Queen Mountain, Ryan Mountain, Smith Water Canyon.

### LITERATURE CITED

Kocourková, J., K. Knudsen, and S. Tucker. 2012. A Checklist of the Lichenicolous Biota of California. *Opuscula Philolichenum* 11: 64–103.

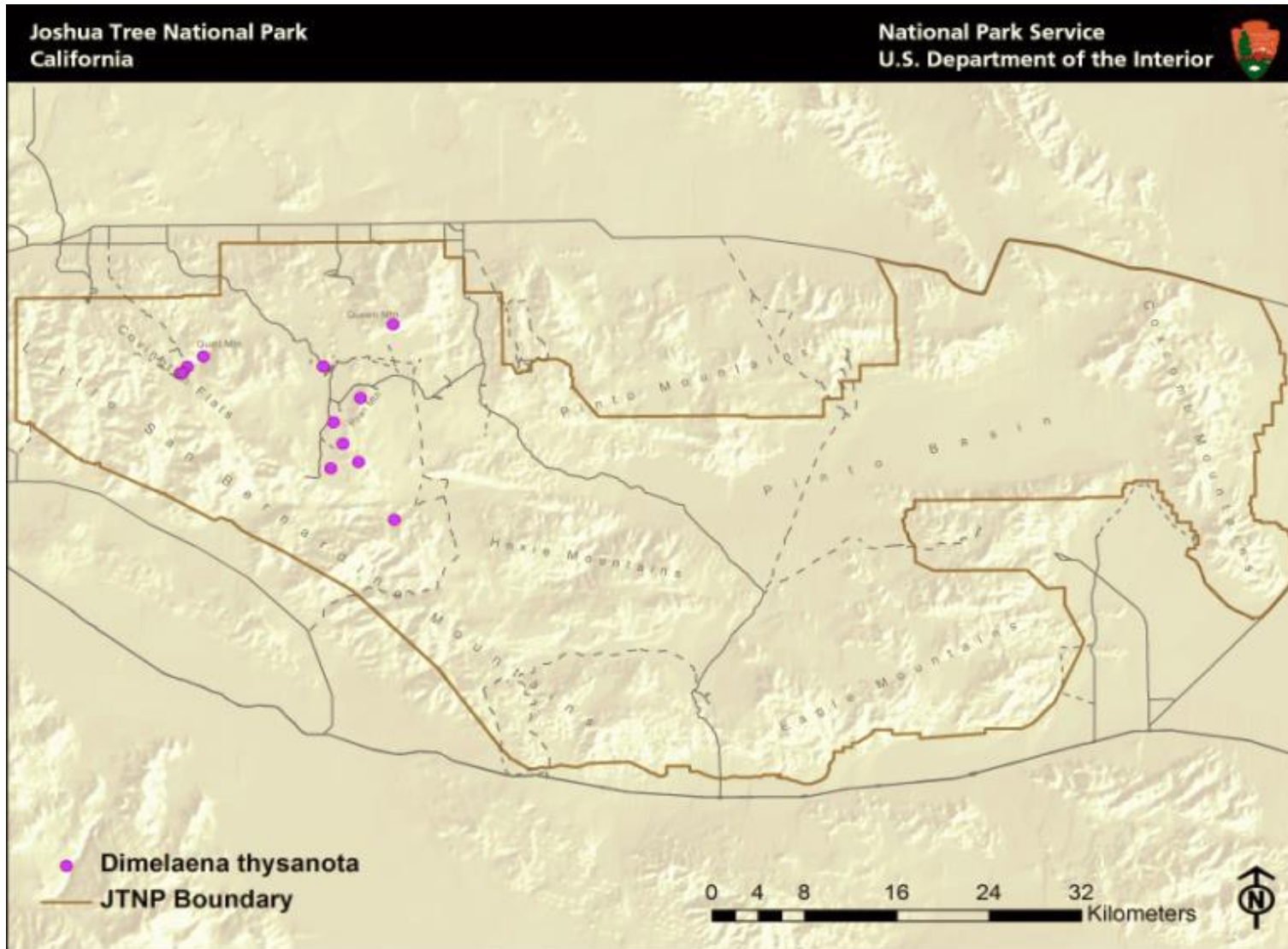
Knudsen, K. and S. Werth. 2008. Lichens of the Granite Mountains, Sweeney Granite Mountain Desert Research Center, southwestern Mojave Desert, San Bernardino County, California.

Mayrhofer, H, and J.W. Sheard. 2004. *Dimelaena*. In: T.H. Nash III, B.D. Ryan, P. Diederich, C. Gries, and F. Bungartz (eds.) Lichen Flora of the Greater Sonoran Desert Region 2: 93–97. Lichens Unlimited, Tempe, AZ.

### ACKNOWLEDGEMENTS

The work of Kerry Knudsen was funded by a co-operative agreement between Joshua Tree National Park and the University of California at Riverside (UCR). The work of Jana Kocourková was supported financially by the KONTAKT II, Program of International Cooperation in Research and development for scientific cooperation between the CR and USA, LH 11057 from Ministry of Education, Youth and Sports of the Czech Republic.

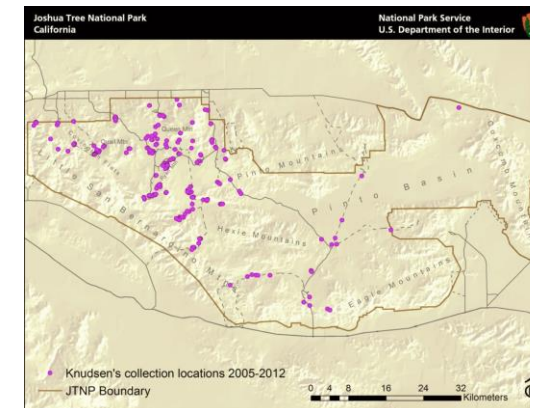
*Dimelaena thysanota*



Known distribution of *Dimelaena thysanota* in JTNP.



Location of Joshua Tree National Park in Southern California



All 238 of Knudsen's and Kocourková's lichen collection sites throughout Joshua Tree National Park between the years of 2005 and 2012.

Map collection, maps made in software ArcGIS, 10.1; electronic form, file type pdf.