

***Heteropladidium compactum* in the Joshua Tree National Park (California, U.S.A.)**

Map collection



Heteropladidium compactum. Photo by Tim Wheeler

Kerry Knudsen, Kocourková Jana*

*Czech University of Life Sciences Prague, Faculty of Environmental Sciences, Department of Ecology, Czech Republic

© 2012

Abstract – *Heteropladidium compactum* is a cosmopolitan species. It is common in southern California deserts including the Mojave and Sonoran Deserts in Joshua Tree. It usually grows on non-calcareous rock and it is considered a lichenicolous lichen. The map of distribution of *H. compactum* in Joshua Tree National Park is presented. We compiled a detailed list of records based on GPS data.

Key words – *Heteropladidium compactum*, *H. zamenhofianum*, lichens, map of distribution, lichenicolous lichen, Mojave and Sonoran Deserts

Authors – Kerry Knudsen¹, Kocourková Jana²

¹The Herbarium, Department of Botany & Plant Sciences, University of California Riverside, California 92521, U.S.A. – e-mail: Knudsen@ucr.edu

²University of Life Sciences Prague, Department of Ecology, Faculty of Environmental Sciences, Kamýcká 129, Praha 6 – Suchbátka, CZ – 165 21, Czech Republic – e-mail: kocourkovaj@fzp.czu.cz

***Heteropladidium compactum* (A. Massal.) Gueidan & Cl. Roux**

DESCRIPTION. – Breuss 2007 (as *Verrucaria compacta*).

WORLD DISTRIBUTION. – Cosmopolitan.

SUBSTRATE. – Usually non-calcareous rock and considered a lichenicolous lichen (Kocourková et al. 2012).

NOTES. – *Heteropladidium compactum* is common in southern California deserts. It is documented by 30 collections in the Mojave and Sonoran Deserts in Joshua Tree. *Heteropladidium zamenhofianum* (Clauz. & Cl. Roux) Gueidan & Cl. Roux is a calciphile and a lichenicolous lichen on *Staurothele* species. It is known from limestone and dolomite in Cactus Flats in the southwestern Mojave Desert (Knudsen 2005; Breuss 2007), but has not yet been discovered in Joshua Tree.

DISTRIBUTION. – Cottonwood Mountains (Cottonwood Canyon), Hexie Mountains, Juniper Flats, Little San Bernardino Mountains (Black Rock, Keys View, Pushwalla), lower and upper Covington Flats, Pinkham Canyon, Queen Valley, Ryan Mountain, Sheep's Pass, Skull Rock, Squaw Tank, Wonderland of Rocks (Indian Cove, Keys Ranch).

LITERATURE CITED

Breuss, O. 2007 [2008]. *Verrucaria*. In: T.H. Nash III, C. Gries, and F. Bungartz (eds.) Lichen Flora of the Greater Sonoran Desert Region. 3: 335–377. Lichens Unlimited, Tempe, AZ.

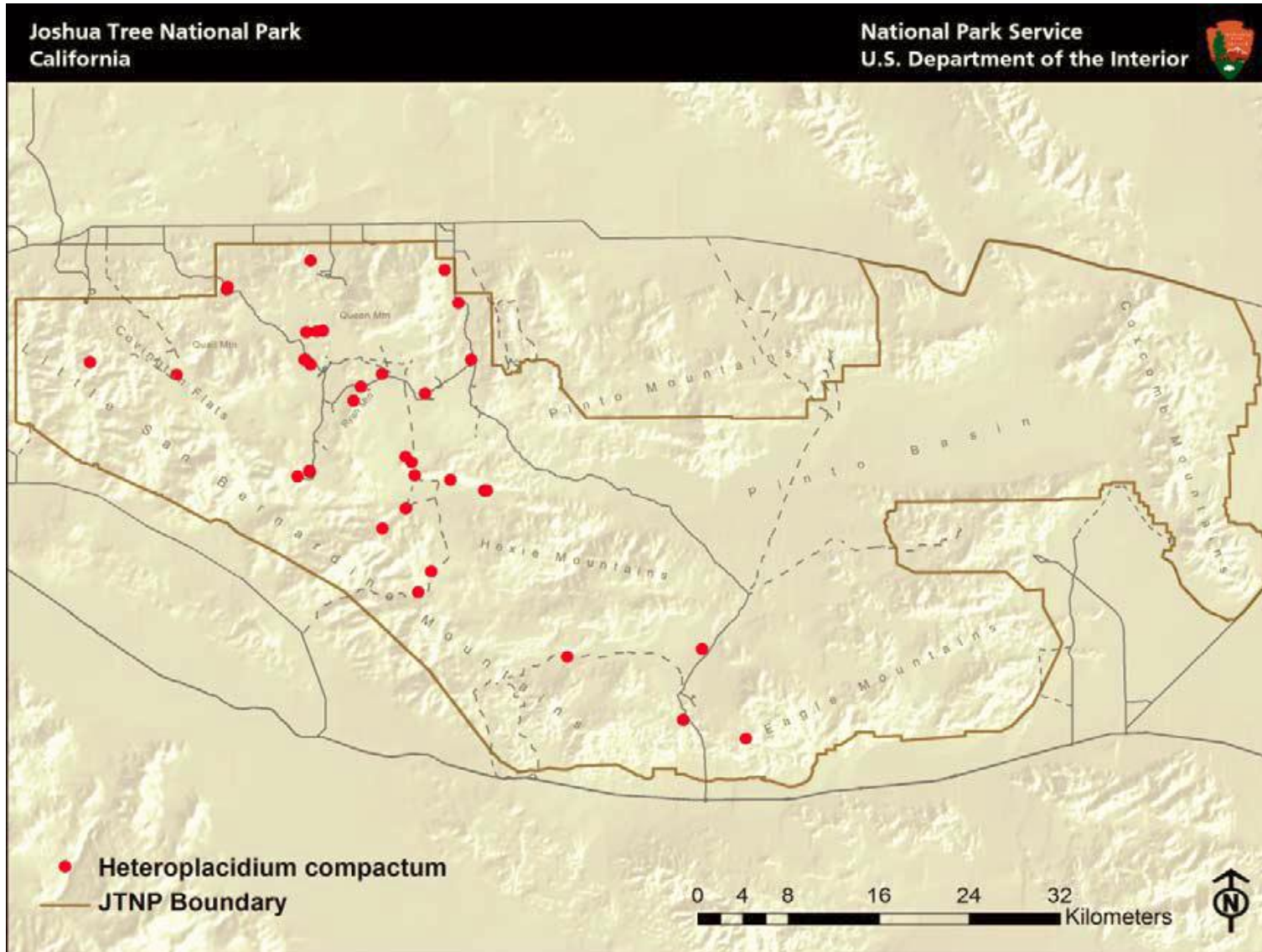
Knudsen, K. 2005. The carbonate lichen flora of Cactus Flats in the San Bernardino Mountains, San Bernardino County, California, USA. *Crossosoma* 31(1): 13–24.

Kocourková, J., K. Knudsen, and S. Tucker. 2012. A Checklist of the Lichenicolous Biota of California. *Opuscula Philolichenum* 11: 64–103.

ACKNOWLEDGEMENTS

The work of Kerry Knudsen was funded by a co-operative agreement between Joshua Tree National Park and the University of California at Riverside (UCR). The work of Jana Kocourková was supported financially by the KONTAKT II, Program of International Cooperation in Research and development for scientific cooperation between the CR and USA, LH 11057 from Ministry of Education, Youth and Sports of the Czech Republic.

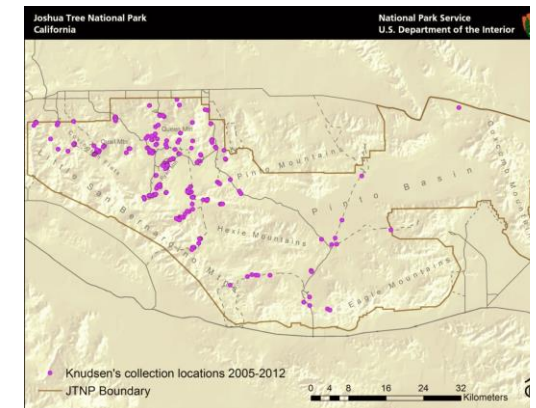
Heteroplacidium compactum



Known distribution of *Heteroplacidium compactum* in JTNP.



Location of Joshua Tree National Park in Southern California



All 238 of Knudsen's and Kocourková's lichen collection sites throughout Joshua Tree National Park between the years of 2005 and 2012.

Map collection, maps made in software ArcGIS, 10.1; electronic form, file type pdf.