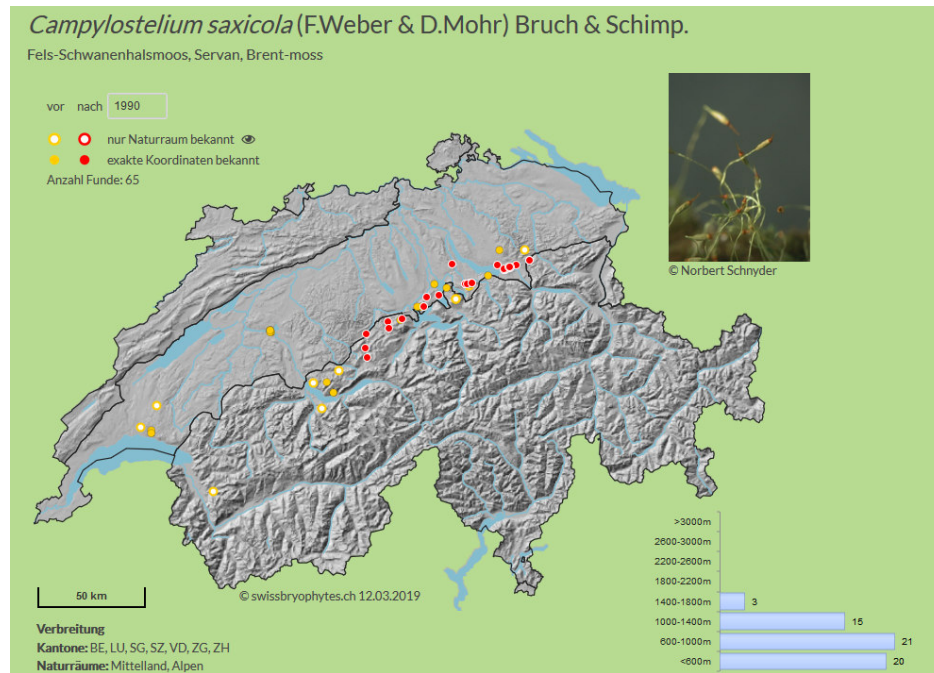


***Campylostelium saxicola* (F.Weber & D.Mohr) Bruch & Schimp.****Beschreibung - Description**

- Pflanzen klein, mit Seta bis ca. 1 cm hoch
- *Seligeria*-artiger Habitus
- Blätter trocken verbogen
- Seta mit charakteristischer schwanenhalsartiger oder korkenzieherartiger Krümmung
- Kapsel schmal zylindrisch, glatt,
- Deckel mit langem Schnabel
- Beschattete, luftfeuchte Stellen auf sauren, ± basenreichen, Sandsteinen, seltener auf Granit und Gneis

**Ähnliche Arten**

***Brachydontium trichoides***: Kapsel gerippt, Seta gerade, oft mit *C. saxicola* vergesellschaftet

***Seligeria* Arten**: Kapsel ellipsoidisch, kurz-zylindrisch bis trichterförmig, Seta gerade oder einfach gebogen (*S. recurvata* und *S. campylopoda* in feuchtem Zustand), meist auf kalkreicheren Gesteinen

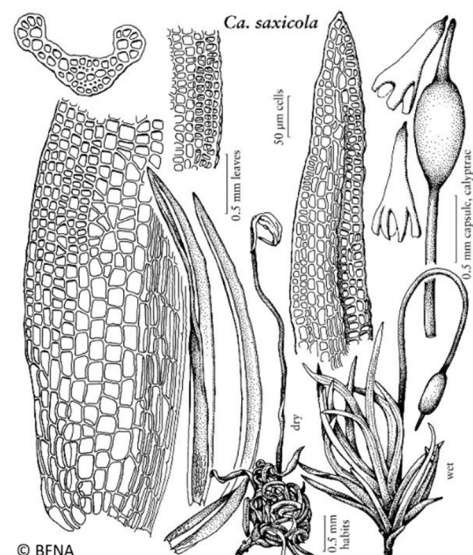
***Ptychomitrium incurvum***: Seta gerade, Blätter ± abrupt zugespitzt

***Campylostelium saxicola* (from: Bryophyte of Flora North America FNA Vol. 27 Page 301, 307)**

**Plants** glossy. **Leaves** 2-3 mm, often circinately curled when dry, margins entire, erect; apices acute, subcucullate. **Seta** 5-7 mm, twisted below the capsule and often flexuous when dry, often recurved when wet. **Capsule** 1-1.2 mm, smooth or slightly wrinkled when dry; operculum red proximally, 0.5-0.7 mm; peristome teeth red. **Calyptra** 0.7 mm, mostly shallowly lobed proximally. **Spores** 8-10 µm.

Capsules mature Oct.-May. Forests or openings on acidic sandstone boulders and cliffs, and sandstone rock shelters; moderate elevations (400-1300 m); P.E.I., Que.; Ala., Ark., D.C., Ind., Ky., Mass., N.H., N.J., N.Y., N.C., Ohio, S.C., Tenn., Va., Wash.; Europe.

*Campylostelium saxicola* is a tiny moss with glossy, crisped, or sometimes circinate leaves; it grows on shaded boulders in forests over most of its range but in rock shelters in the southern portion. *Campylostelium saxicola* is wide-spread in the flora area but infrequently collected due to its inconspicuous nature. Its small delicate stature, smooth calyptra, and usually flexuous-curved seta distinguish it from *Ptychomitrium*.



Bilder - Pictures

