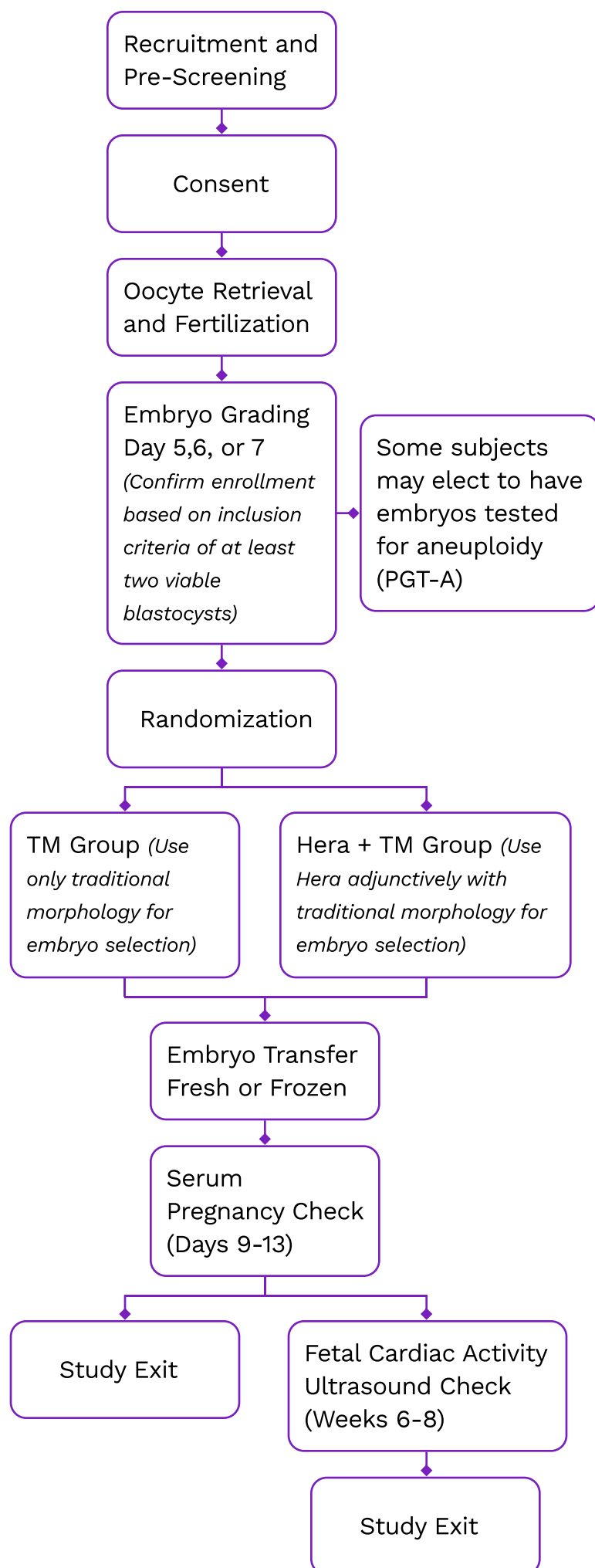


LOTUS study



Evaluation of the **Alife Hera System** as an Adjunctive Tool for the Prioritization of Embryos Deemed Suitable for Transfer: A Randomized Controlled Study



What is involved in the study, how do I participate?

Before you participate in any trial procedures, you will be asked to formally consent to participate in the study. Participation in the study is entirely voluntary. If you decide to withdraw at any time this will not affect your ongoing medical care. There will not be any extra visits required for participation in the study.

What is the purpose of this study?

To evaluate whether the adjunctive use of the Hera System (Hera System used with traditional morphological grading) with embryos already deemed suitable for transfer is non-inferior to trained embryologists using standard morphology criteria alone in clinical pregnancy rate, defined as **fetal heartbeat at 6-8 weeks**.

