

*Salix
commutata*

and

*Salix
barclayi*



Lily Grbavach

Salicaceae

Willow Family

- Part of the order Malpighiales
- There are 2 genera found in Alaska

Salix and *Populus*

- Plants are dioecious



Salix



- Flowers are apetalous and unisexual
- Either a superior pistil, or 2 or more stamen
- Catkins are the dense spike inflorescences
- Many species precocious
- Single bud scale used for winter identification

Species Locations

- *S. commutata*
- *S. barclayi*

© 2011 Europa Technologies
© 2011 Geocentre Consulting
© 2011 Google

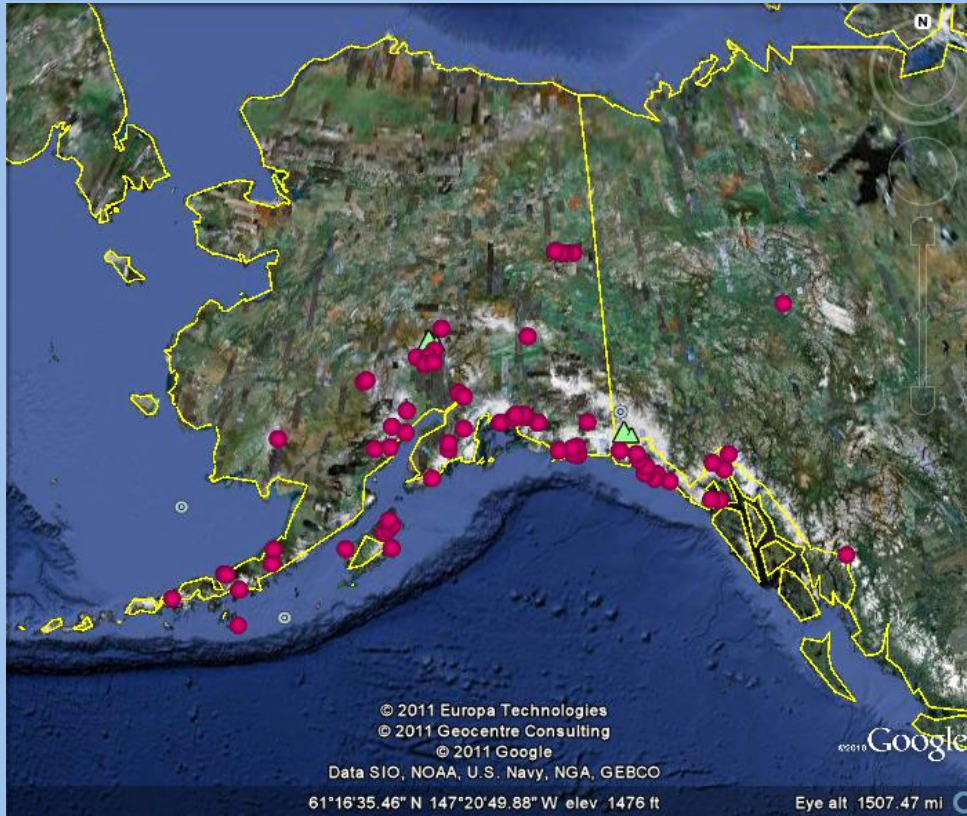
Data SIO, NOAA, U.S. Navy, NGA, GEBCO

61°16'35.46" N 147°20'49.88" W elev 1476 ft

©2010 Google

Eye alt 1507.47 mi

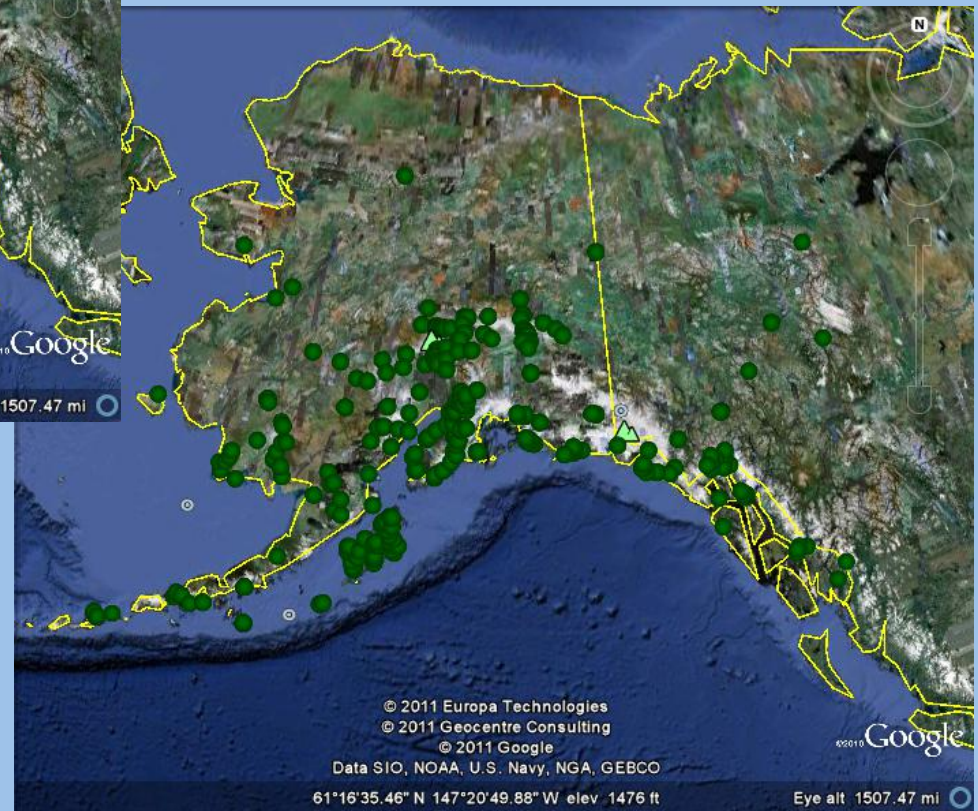
Separated Species Locations



S. commutata: Most commonly found in the mountains of south central Alaska at or above tree line. Occasionally occurs along the coast in wet habitats.

Both Species are most commonly thicket forming along small streams.

S. Barclayi: most commonly found on the southern coast in central Alaska in forest opening



Salix commutata

Common Name

- Undergreen Willow

Synonyms



- SABAC3 *Salix barclayi* Andersson var. *commutata* (Bebb) L. Kelso
- *Salix commutata* Bebb var. *denudata* Bebb
- SACOM *Salix commutata* Bebb var. *mixta* Piper
- SACOP *Salix commutata* Bebb var. *puberula* Bebb
- SACOS *Salix commutata* Bebb var. *sericea* Bebb

Source: <http://plants.usda.gov/>

Salix barclayi

Common Names

- Barclay's Willow

Synonyms



- SABAA *Salix barclayi* Andersson var. *angustifolia* (Andersson) Andersson ex C.K. Schneid.
- SABAC *Salix barclayi* Andersson var. *conjuncta* (Bebb) C.R. Ball ex C.K. Schneid.
- SACO21 *Salix conjuncta* Bebb
- SAHO6 *Salix hoyeriana* Dieck
- SAPYH *Salix pyrolifolia* Andersson var. *hoyeriana* (Dieck) Dippel
- SARE15 *Salix regelii* Andersson

Dichotomous Key

- A. Leaves glabrous; densely pubescent, can't see actual leaf surface; hairs with reddish hue; leaves persistently entire.
- AA. Leaves pubescent, able to see actual leaf surface; Leaves toothed or partially toothed.
 - B. Hair on top and bottom of leaves; top and bottom of leaves dark green, or yellow-green top; Short style length \approx 1mm; capsules red in coloration.....
..... *S. commutata*.
 - BB. Hair on top of leaves, bottoms pubescent; bottom of leaves glaucous; Long style length \approx 1.5-2mm; capsules green in coloration *S. barclayi*

Style length

The style length of *S.commutata* is significantly shorter than in *S. barclayi*.

S. Commutata \approx 1mm

S. Barclayi \approx 1.5-2mm



V105877



37730

Leaves



V1528256

- Hair on both sides of leaves
- Both sides of leaf dark green or
- Upper side of leaf yellow-green



S. Barclayi

V113880

- Hair only on upper side of leaf
- Bottom of leaf glaucous and pubescent
- Leaves blacken when drying



34714

S. commutata



58259

Capsule Coloration

The capsules in *S. commutata* tend to have red coloration.



While in *S. barclayi* they tend to have green coloration.



Young Specimens

Capsule Coloration

In older samples the coloration difference is still visible.

S. commutata



S. Barclayi



Older Specimens

Museum Specimens

S. commutata

- ALA V152856: Examined 4/27/2011
- ALA 34714: Examined 4/27/2011
- ALA V105877: Examined 4/27/2011
- ALA 75002: Examined 4/27/2011

Arctos

- ALA 5785: Examined 5/1/2011
 - http://arctos.database.museum/MediaSearch.cfm?action=search&media_id=231603,26933,101519

Museum Specimens

S. Barclayi

- ALA V113880: Examined 4/27/2011
- ALA 58259: Examined 4/27/2011
- ALA 37730: Examined 4/27/2011

Arctos

- ALA V109820: Examined 5/1/2011
 - http://arctos.database.museum/MediaSearch.cfm?action=search&media_id=98288,221860,15544

Works Cited

- Cody, William J. (1996) "Flora of the Yukon Territory." Ottawa: NRC Research Press.
- Hultén, Eric. (1968) "Flora of Alaska and Neighboring Territories, A manual of Vascular Plants." Stanford, California: Stanford University Press.
- Viereck, Leslie A. and Little, Elbert L. Jr. (1972) "Alaska Trees and Shrubs, Agriculture Handbook No. 410." Washington D.C.: U.S. Department of Agriculture, Forest Service.
- Welsh, Stanley L. (1974) "Anderson's Flora of Alaska and Adjacent Parts of Canada." Provo, Utah: Brigham Young University Press.
- Spjut RW. (2006) Salix Salicaceae. The World Botanical Associates. <www.worldbotanical.com/salix>.
- USDA. Plant Profile. United States department of Agriculture, Natural Resource Conservation service. <plants.usda.gov/>.