

**Semi-automated photo-identification of Bahamian Racers (*Cubophis vudii*  
*vudii*)**

SEBASTIAN HOEFER<sup>1,\*</sup>, ANDREU ROTGER<sup>2</sup>, SOPHIE MILLS<sup>1</sup>, NATHAN J. ROBINSON<sup>1,3</sup>

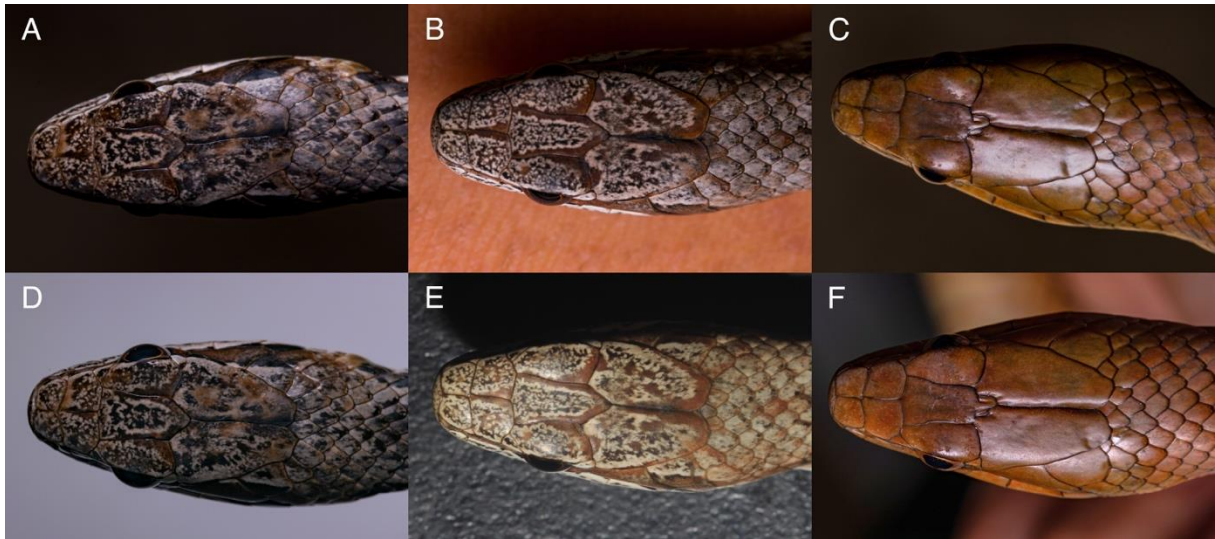
<sup>1</sup>*Cape Eleuthera Institute, The Cape Eleuthera Island School, Eleuthera, The Bahamas*

<sup>2</sup>*Animal Demography and Ecology Unit (GEDA), IMEDEA, CSIC-UIB, 07190 Esporles,  
Spain*

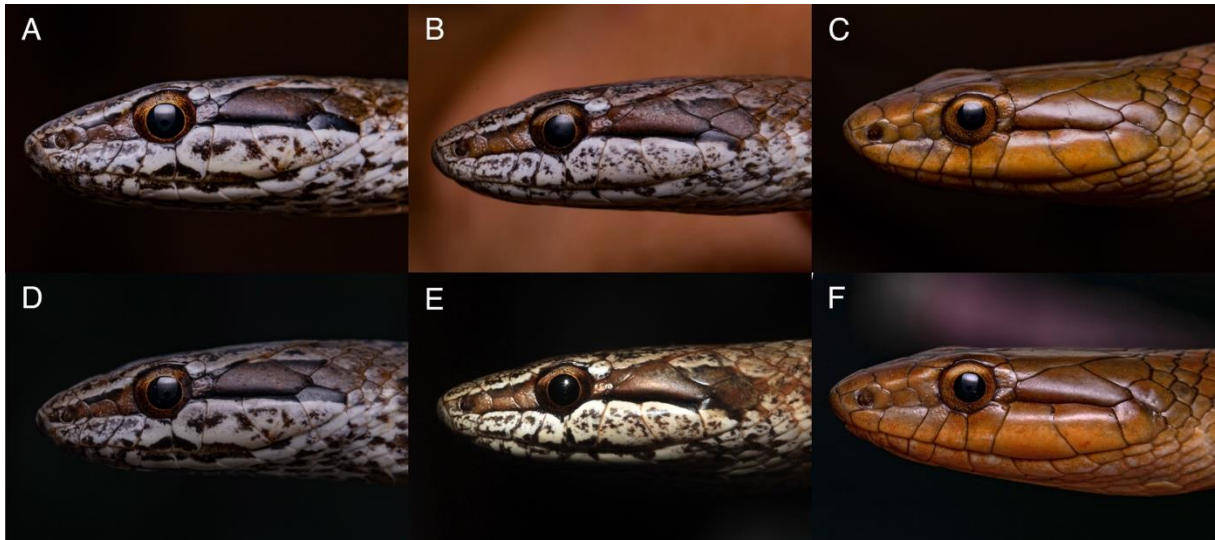
<sup>3</sup>*Fundación Oceanogràfic, Oceanogràfic De Valencia, 46013 Valencia, Spain*

\**Corresponding author. E-mail: sebastianhoefer@outlook.com*

**SUPPLEMENTARY MATERIAL**



**Figure S1.** No visible changes in colour or scale patterns in the pileus region of three different Bahamian Racers over the course of the study. A) First capture of individual 1, D) recapture of individual 1 after 63 days; B) First capture of individual 2, E) recapture of individual 2 after 216 days; C) First capture of individual 3, F) recapture of individual 3 after 122 days.



**Figure S2.** No visible changes in colour or scale patterns in the labial region of three different Bahamian Racers over the course of the study. A) First capture of individual 1, E) recapture of individual 1 after 63 days; B) First capture of individual 2, E) recapture of individual 2 after 216 days; C) First capture of individual 3, F) recapture of individual 3 after 122 days.