

**SPONGES INHABITING THE SHELF-EDGE MARINE
PROTECTED AREAS & DEEP-WATER REEFS OF
THE SOUTHEASTERN USA**

**PHOTO IDENTIFICATION GUIDE
1st Edition**



MARÍA CRISTINA DÍAZ

SHIRLEY A. POMPONI

STEPHANIE FARRINGTON

JOHN REED



SPONGES INHABITING THE SHELF-EDGE MARINE PROTECTED AREAS AND DEEP-WATER REEFS OF THE SOUTHEASTERN USA

PHOTO IDENTIFICATION GUIDE 1st Edition



**HARBOR
BRANCH**



Díaz, MC, SA Pomponi, SF Farrington, JK Reed 2021. Sponges Inhabiting the Shelf-edge Marine Protected Areas and Deep-water Reefs of the Southeastern USA, Photo Identification Guide, 1st Edition. Cooperative Institute for Ocean Exploration, Research and Technology (CIOERT) at Harbor Branch Oceanographic Institute-Florida Atlantic University (HBOI-FAU). HBOI Contribution Number 2294. <http://www.cioert.org/expeditions/mesophotic-reef-ecosystems>.

Cover Page

Photo Identification Guide of the Sponges Inhabiting the Shelf-edge Marine Protected Areas and Deep-water Reefs of the Southeastern USA
1st Edition

Authors: María Cristina Díaz, Shirley A. Pomponi, Stephanie Farrington, John K. Reed

July 19, 2021

ACKNOWLEDGEMENTS

We gratefully acknowledge funding for research support and ROV operations by the NOAA Coral Reef Conservation Program (CRCP) and the South Atlantic Fishery Management Council (SAFMC; CRCP Fishery Management Council Coral Reef Conservation Cooperative Agreements- Grant #: FNA17NMF4410271). We also acknowledge the NOAA Office of Ocean Exploration and Research (OER Grant #: NA14OAR4320260) and the NOAA Office of Marine and Aviation Operations (OMAO) which provided support for part of the ship time.

We thank the crews of the NOAA Ships *Pisces* and *Nancy Foster*, Harbor Branch Oceanographic Institution (HBOI) Research Vessels *Seward Johnson* and *Edwin Link*, ROV operators Lance Horn and Jason White (University of North Carolina at Wilmington, Undersea Vehicle Program), and the HBOI *Johnson-Sea-Link* submersible pilots for their excellent work and expertise during these many expeditions. The surveys of the shelf-edge Marine Protected Areas (MPAs) and deep-water Habitat Areas of Particular Concern (HAPCs) were a collaboration of NOAA National Marine Fisheries, the Cooperative Institute for Ocean Exploration, Research, and Technology (CIOERT) at Harbor Branch Oceanographic Institute, Florida Atlantic University (HBOI-FAU), the University of North Carolina at Wilmington (UNCW), and the College of Charleston.

We thank Dr. Rob van Soest, Dr. Henry Reiswig, Dr. Martin Dorhmann, Dr. Michelle Klautau, and Dr. Paco Cardenas, for their contribution with some of the taxonomic assignments.

Affiliations:

María Cristina Díaz, Shirley A. Pomponi, Stephanie Farrington, John K. Reed.
Cooperative Institute for Ocean Exploration, Research and Technology (CIOERT); Harbor Branch Oceanographic Institute, Florida Atlantic University, Fort Pierce, Florida, USA

Citation:

Díaz MC, Pomponi SA, Farrington S, Reed JK (2021). Photo Identification Guide of the Sponges Inhabiting the Shelf-edge Marine Protected Areas and Deep-water Reefs of the Southeastern USA, 1st Edition. Harbor Branch Oceanographic Institute Contribution Number 2294. <http://www.cioert.org>.

Credits:

Photo images: NOAA Fisheries/HBOI CIOERT

Images were taken with the UNCW-CIOERT Undersea Vehicle Program *Mohawk* ROV and by the HBOI *Johnson-Sea-Link* submersibles. All rights reserved. Photos may be reproduced with credit to NOAA Fisheries/HBOI CIOERT or the publication citation.

Page 1 Cover Caption:

Oceanapia aff. *stalagmitica* from mesophotic reef (65 m), outside the Georgia MPA.

Page 2 Cover Caption:

Top Left- *Geodia* aff. *megastrella* (304 m) from deep-water *Lophelia* coral reef, Deep-water Coral Habitat Area of Particular Concern, Florida.

Top Right- *Cliona* aff. *celata* (new species) (69 m), inside Georgia MPA.

Bottom Left- *Nodastrella* sp. MPA-01 (new species) (741 m) from deep-water *Lophelia* coral reef, Deep-water Coral Habitat of Particular Concern, Florida.

Bottom Right- *Leiodermatium lynceus* (165 m), Northern South Carolina MPA, South Carolina.

INTRODUCTION

The acquisition of biodiversity data is an essential aspect of environmental research, conservation assessments, and the monitoring of Marine Protected Areas (MPAs) (Bean et al. 2017; Benoist et al. 2019; Horton et al. 2021). During the nine years of monitoring and surveying the fish and benthic communities of the shelf-edge MPAs and Habitat Areas of Particular Concern (HAPCs) along the southeastern United States, two of the authors (Reed and Farrington) have observed, photographed, and collected numerous sponges inhabiting various benthic hard bottom habitats, such as: *Oculina* coral reefs, rock ledges, rock escarpments, deep-water plateaus, deep-water *Lophelia* coral reefs, and deep-water artificial reefs (Reed et al. 2012; Harter et al. 2013; Reed et al. 2013a; Reed et al. 2013b; Farrington et al. 2014; Harter et al. 2014a; 2014b; Harter et al. 2015; Reed et al. 2015; Harter et al. 2016; 2017a; Harter et al. 2017b; Harter et al. 2018; Harter et al. 2019a; Harter et al. 2019b; 2020). In 2009, the South Atlantic Fishery Management Council (SAFMC), which manages commercial and recreational fisheries in this region, established eight deep-water MPAs along the outer continental shelf off the southeastern U.S. from Florida to North Carolina, covering 1370 km² (529 mi²) (Fig. 1). In addition, the *Oculina* Habitat Area of Particular Concern (OHAPC) was first established off Florida in 1984. The OHAPC was the first deep-sea coral marine protected area to be established in the world and prohibited bottom trawling, dredging, and bottom longlines. This OHAPC was expanded to 1,029 km² in 2000 and then increased in size in 2015 (1665 km²; 643 mi²) to cover all the known deep-water *Oculina* coral mound habitat based on our discoveries during the MPA cruises. In addition, a large portion of the region from North Carolina to south Florida is also now protected as five Deep-water Coral Habitat Areas of Particular Concern (CHAPCs, Fig. 1) which were established by NOAA (2010) and encompass 62,714 km² (24,214 mi²). These CHAPCs and OHAPC were established in response to concerns about potential impacts of benthic fisheries in this region on coral and hard-bottom habitats. The HAPCs prohibit or restrict bottom-tending fisheries such as bottom trawls, longlines, dredges and traps. The data from these cruises establish baseline information to be referenced and compared to future research cruises to identify the long-term health and status of these important ecosystems. These data are made available to the SAFMC, NOAA Fisheries, NOAA Deepsea Coral Research and Technology Program (DSCRTP), NOAA Coral Reef Conservation Program (CRCP), NOAA Mesophotic Reef Ecosystem Program, and NOAA Marine Sanctuaries to assist management on these habitats and key species.

This publication represents the first taxonomic identification visual guide to the most common species observed while exploring and monitoring the shelf-edge MPAs, the Stetson/Miami Terrace Coral Habitat Areas of Particular Concern (CHAPC), the *Oculina* HAPC, and nearby adjacent areas on the continental shelf of the southeastern USA from south Florida to North Carolina (Fig. 1, Table 1). This is a first step towards the characterization of a highly diverse and poorly known component of these unique deep-water benthic communities. From 2011-2019, during surveys of the shelf-edge MPAs and HAPCs (NOAA Fisheries and HBOI CIOERT), Reed and Farrington covered 529 km of sea floor bottom at depths of 48 to 1240 m along the continental shelf with

ROV photographic and video transects and recorded 43,542 images. From these images, 278 photographs were selected which represented common sponge morphotypes distinguished while interpreting the ROV photo transects. After careful comparative observations of various external morphological features, 129 morphospecies were distinguished, and a synoptic external morphology diagnosis was generated. In addition, taxonomic analyses were conducted on 76 sponge samples collected during the most recent of these expeditions (8 samples from 2019) and during previous collections in this region using the Harbor Branch Oceanographic Institution's *Johnson-Sea-Link* submersibles from 2002 to 2010 (68 samples).

Species morphological characterization

In the present guide each morphospecies is characterized by their external appearance (shape, size, surface features, color patterns, oscula, and if available consistency). Sponge shapes are summarized according to their 3-dimensional growth as encrusting (thin or thick but following the contour of the substrate), or massive (when they develop away from the substrate). Their shape may represent a particular geometric figure (tubular, cylindrical, globular or sub-globular, cups or fans) or a particular pattern (bushy, arborescent, amorphous). "Surface" gives details of the outer body features which may be smooth, nodular, rugose, convoluted, velvet, porous, or might have projections from the surface that might be cone shaped (conulose), hairy (hispid), with digitated hollow blind projections (fistulose), or to features of the water incurrent pores (papillae, porocalices, porous, etc.). Lastly, we find that oscula (larger excurrent apertures on the sponge body) are useful descriptive features. We note their overall abundance (sparse, common, or abundant), location (apical, regularly distributed, in clumps, on a sieve plate), shape (round, oval or key-holed), size (diameter measured when they are visible), and the presence and nature of a membrane (flush, elevated, collar, transparent, colored). Finally, the sponge consistency can be distinguished when one has a physical specimen, such as soft, compressible, cartilaginous, crumbly, hard, etc. General descriptive terms for sponge external morphology can be found in the *Sponge Thesaurus* (Boury-Esnault and Rützler 1997). The "Guide to Invertebrates of Gray's Reef" from Dan F. Gleason's lab was useful in the evaluation of a dozen species presented here (<https://sites.google.com/georgiasouthern.edu/graysreefinvertebrates/>).

Taxonomic scope

Fifty-six morphospecies were identified among the 76 HBOI samples collected, the other 73 morphospecies are recognized from the interpretation of underwater photographs. Seventeen morphospecies belong to the class Hexactinellida (3 orders and 9 genera), one undescribed species of the genus *Corticium* represents the class Homoscleromorpha, and one species of *Leucandra* represents the class Calcarea. The remaining 110 morphospecies belong to the class Demospongiae (16 orders, and 48 genera). Forty-four morphospecies received a species name assignment, and fourteen received the 'cf.' annotation to a known species. In this guide a species is assigned a *cf.* (from the Latin *confer*) for two possible reasons: the species might present an external or skeletal difference with the species as currently described, and/or further comparative study must be carried out to determine the identity of the species. Forty-five morphospecies either received the annotation 'aff.' (7) (denoting it is a different species, but with its closest species being indicated) or were identified only to genus level (38). Twenty-seven morphospecies only received supra-generic assignments (e.g., family, order, class). We estimate that at least 24 Demospongiae species,

and 3 Hexactinellida species represent undescribed species, new to science. These species are indicated with an “N” after the morphospecies name at the top of each image. Further studies are required to evaluate these taxa, including comparative studies of previous collections and/or literature (i.e., (George and Wilson 1919; De Laubenfels 1952; Wells et al. 1960; Alvarez et al. 1998; Freeman et al. 2007; Gomez 2014). We have started the taxonomic studies and genetic barcoding efforts of a handful of these possibly unknown species. Our taxonomic assignments were kindly reviewed by Dr. Rob van Soest (Naturalis Biodiversity Center, The Netherlands). Several of the identifications assigned to *Geodia* species are the result of previous work by Dr. Paco Cardenas (Uppsala University, Sweden). We also thank Dr. Michelle Klautau (Universidade Federal do Estado do Rio de Janeiro, Brazil) by suggesting that the only *Calcarea* in the collection was probably a species of *Leucandra* (also supported by Dr. van Soest). Many of the Hexactinellida species identified to species level in this guide have been described recently from samples collected by the *Johnson-Sea-Link* submersibles in the area of study. This includes *Heterotella pomponae* (Reiswig 2000), *Nodastrella* species (Dohrmann et al. 2012) and *Conorete pourtalessi* (Reiswig and Dohrmann 2014). Dr. Henry Reiswig (Royal BC Museum, Canada) and Dr. Martin Dohrmann (Ludwig Maximilians University Munich, Germany) identified other Hexactinellids species here presented. (i.e., *Hertwigia falcifera* specimens).

Morphospecies data and information

In this guide each specimen is presented with the following data: an in situ image, the lowest available scientific name, species author/date, higher taxonomy, depth and location of the specimen, a brief synoptic description of diagnostic morphological features, and the image file name (bottom left of image). The species authority and taxa names reflect the most current classification provided in the World Porifera Database (Van Soest et al. 2021). If a specimen was collected, for a particular morphospecies, a lab and/or in situ image is included (HBOI sample number is indicated at bottom right of image; e.g., 24-VIII-02-2-006). Most descriptions include some type of measurement (overall body size, oscule diameter, fistule size, etc.). Some photographs show two laser dots that are 10 or 20 cm apart (ROV images- 10 cm for images 2011 to 2019; JSL- 20 cm for images from 2002 to 2010); however, in some cases the image has been cropped to show the species with more clarity. Measurements were made using the reference of the lasers and using the CPCE program (Kohler and Gill 2006) (fig.2). The species are organized taxonomically, and the taxonomic identification is provided for each photograph. An identification qualifier field includes: *= Identification from image only; **= Identification from image and a physical specimen different from the one shown in the image, ***= Identification from image and the physical specimen from the image. Identifications of collected samples were made by M.C. Diaz and S.A. Pomponi. We recognize that identifications of sponges only from photographic images cannot be confirmed without a specimen to examine, so morphospecies identifications with a * should be considered as tentative. However, recent attempts to distinguish deep water sponge taxa through external morphology has demonstrated that the combination of several morphological features allows the distinction of many sponge species (Díaz et al. 2019; Federwisch et al. 2020).

This initial evaluation of the sponge biodiversity in the southeast U.S. shelf demonstrates the existence of a large portion of unknown fauna, which likely carries out essential functions and services (e.g., habitat and food for other species, nitrogen/carbon/silica cycling, bioengineering, etc.) in these highly productive marine ecosystems. The development of a visual guide of the

sponges that inhabit these unique ecosystems will aid to further characterize and carry out long term monitoring with higher accuracy. We foresee and hope that this book will promote the study of the HBOI sponge collections, and will stimulate biogeographic, ecologic, and evolutionary research of the sponge fauna at these unique environmental realms.

Table 1. Shelf-edge Marine Protected Areas (MPA), *Oculina* Coral Habitat Area of Particular Concern (OHAPC), and Deep-water Coral (CHAPC) sites used in this study.

	Depth Min (m)	Depth Max (m)
Florida	48	1240
Pourtales Terrace CHAPC	124	930
East Humps MPA	182	320
St. Lucie Hump MPA	68	115
Oculina Experimental Closed Area (OECA)	56	148
Oculina Bank HAPC	56	219
North Florida MPA	48	415
Stetson-Miami Terrace HAPC	140	1240
Georgia	90	230
Outside Georgia MPA	90	230
South Carolina	50	190
Charleston Deep Artificial Reef MPA	100	140
Edisto MPA	50	140
Devil's Hole SMZ	70	190
Northern South Carolina MPA (iceberg scar site)	50	170
North Carolina	60	1100
Snowy Grouper Wreck MPA	60	260
Cape Fear HAPC	350	520
Cape Lookout SMZ	669	1100
Depth Range of Managed Areas	48	1240

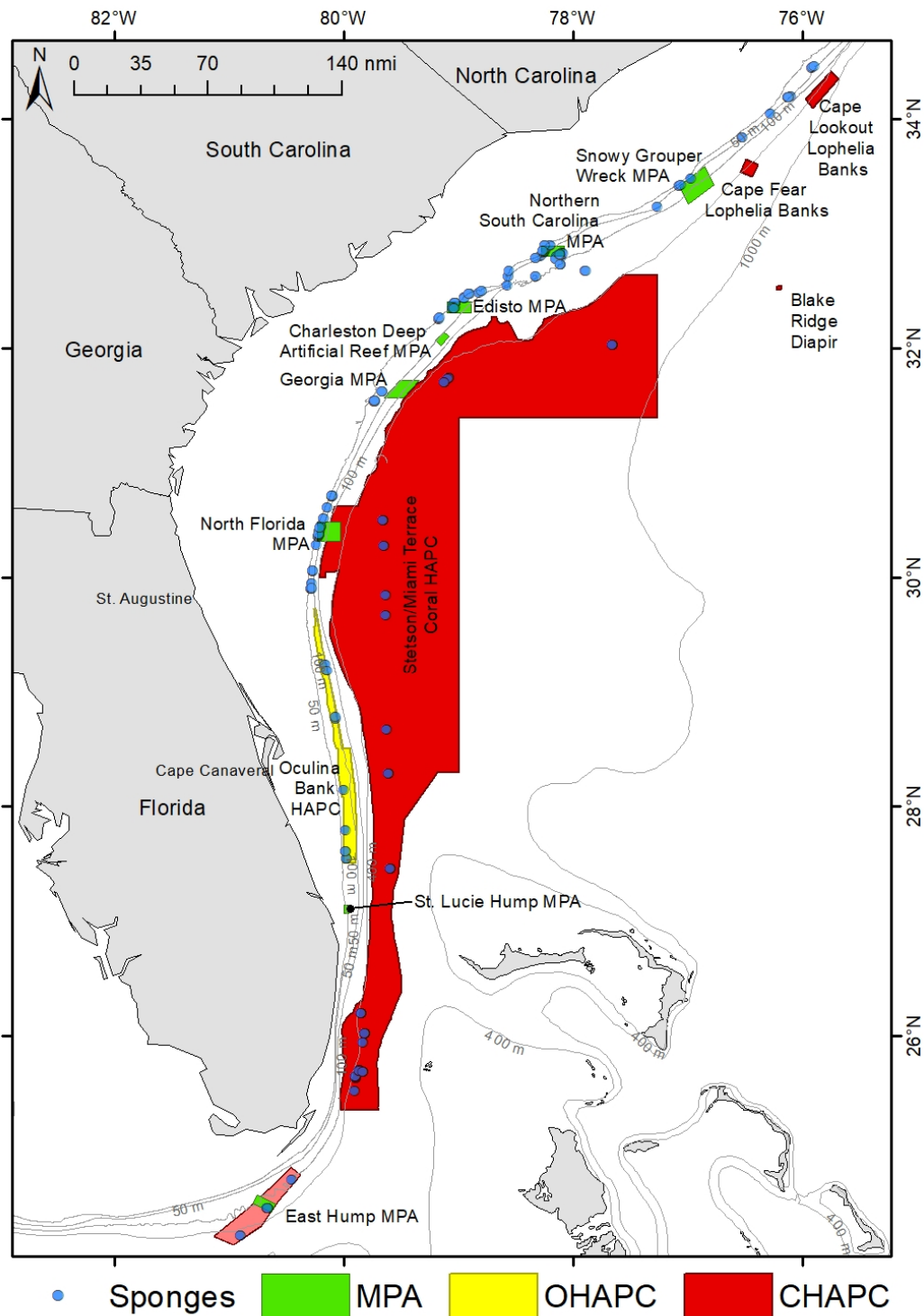


Figure 1. Map of southeastern U.S. with locations of sponges used in this book (blue dot) from expeditions by NOAA Fisheries/HBOI CIOERT with UNCW *Mohawk* ROV from 2011- 2019, and Harbor Branch Oceanographic *Johnson-Sea-Link* submersible dives from 2002- 2010. MPA= Marine Protected Area; OHAPC- Oculina Coral Habitat Area of Particular Concern; CHAPC= Deep-water Coral HAPC.

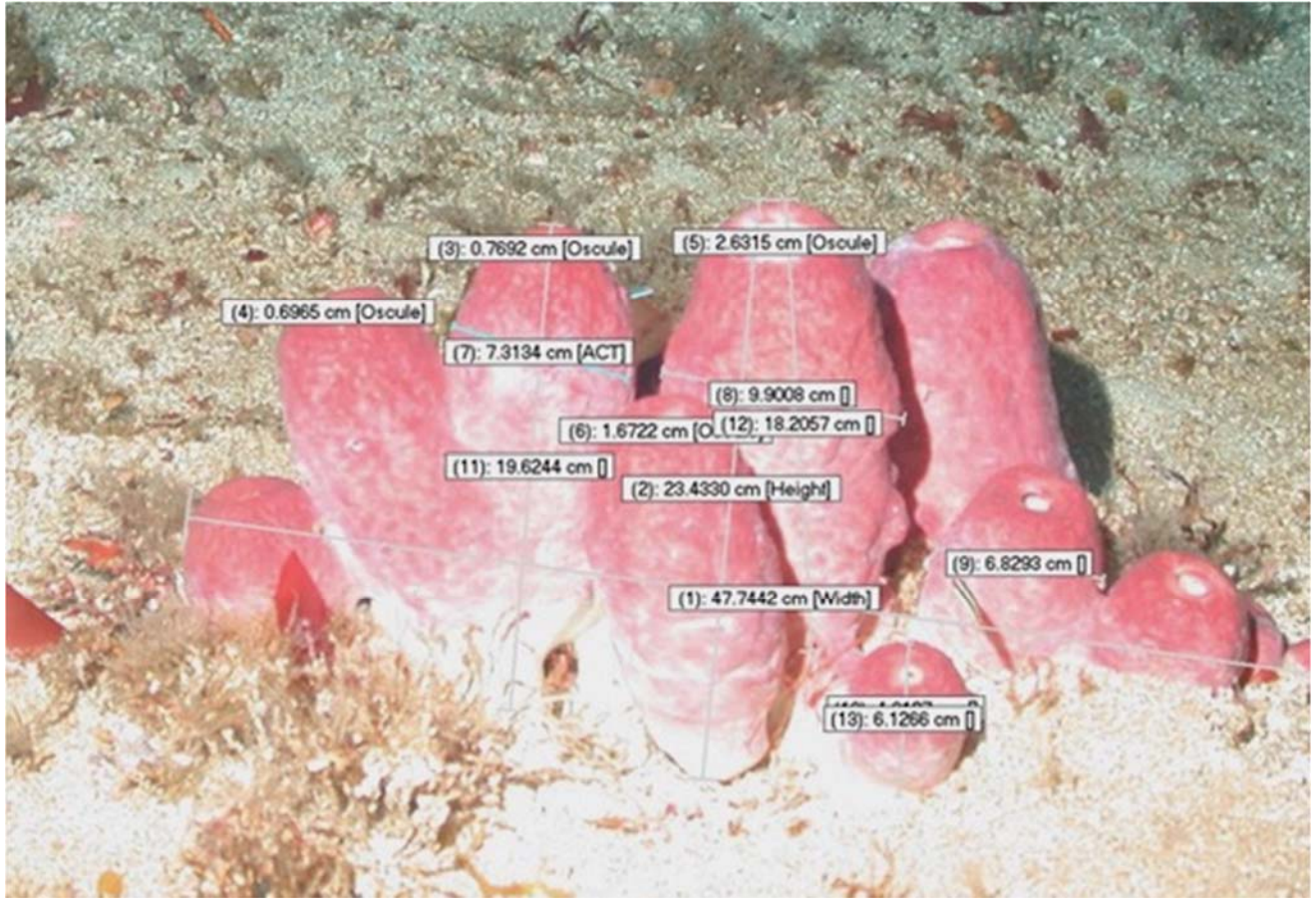


Figure 2. *Aplysina* sp. MPA-02 UW photo from North Carolina “Snowy Wreck” MPA (62 m) being measured by Stephanie Farrington using a CPCE tool (Kohler and Gill 2006).

TABLE OF CONTENTS

Class\Order\Family\Taxa	Page(s)
Demospongiae	20-140
Agelasida	20-22
Agelasidae	20-22
<i>Agelas citrina</i> Gotera & Alcolado, 1987	20
<i>Agelas clathrodes</i> (Schmidt, 1870)	20-21
<i>Agelas sventres</i> Lehnert & van Soest, 1996	22
<i>Agelas tubulata</i> Lehnert & van Soest, 1996	22
Axinellida	23-28
Axinellidae	23-27
<i>Auletta</i> sp. MPA-01 ^N	23
<i>Auletta tuberosa</i> Alvarez, van Soest & Rützler, 1998	24
<i>Axinella polycapella</i> de Laubenfels, 1953	25
<i>Axinella pomponiae</i> Alvarez, van Soest & Rützler, 1998	25
Axinellidae MPA-01	26
Axinellidae MPA-02	26-27
<i>Phakellia connexiva</i> Ridley & Dendy, 1887	27
Raspailiidae	28
<i>Endectyon (Endectyon) cf. tenax</i> ^N (Schmidt, 1870)	28
Biemnida	29-32
Biemnidae	29-32
<i>Biemna</i> sp. MPA-01 ^N	29
<i>Neofibularia nolitangere</i> (Duchassaing & Michelotti, 1864)	30-32
Bubarida	33-34
Dictyonellidae	33-34
<i>Acanthella cubensis</i> (Alcolado, 1984)	33
<i>Acanthella</i> sp. MPA-01	33-34
Chondrillida	35-36
Chondrillidae	35
<i>Chondrilla caribensis</i> Rützler, Duran & Piantoni, 2007	35
Halisarcidae	35
<i>Halisarca caerulea</i> Vacelet & Donadey, 1987	35-36
Chondrosiida	37-38
Chondrosiidae	37-38
<i>Chondrosia collectrix</i> (Schmidt, 1870)	37-38
Clionaida	39-44
Clionaidae	39-44
<i>Cliona</i> aff. <i>celata</i> ^N Grant, 1826	39-40
<i>Cliona</i> sp. MPA-01	41
<i>Cliona</i> sp. MPA-02 ^N	41-45
<i>Sphaciospongia</i> sp. MPA-01	46
Spirastrellidae	46

<i>Spirastrella coccinea</i> (Duchassaing & Michelotti, 1864)	46
Desmacellida	47
Desmacellidae	47
<i>Desmacella</i> cf. <i>pumilio</i> Schmidt, 1870	47
Dictyoceratida	48-61
Dysideidae	48
Dysideidae MPA-01	48
Irciniidae	48-60
<i>Ircinia campana</i> (Lamarck, 1814)	48-53
<i>Ircinia felix</i> (Duchassaing & Michelotti, 1864)	53-56
<i>Ircinia</i> cf. <i>felix</i> (Duchassaing & Michelotti, 1864)	57
<i>Ircinia</i> cf. <i>strobilina</i> (Lamarck, 1816)	57-59
<i>Sarcotragus</i> sp. MPA-01 ^N	59-60
Thorectidae	60-61
<i>Smenospongia echina</i> (Laubenfels, 1934)	60-61
Haplosclerida	62
Haplosclerida MPA-01	62
Callyspongiidae	62-63
<i>Callyspongia (Cladochalina) aculeata</i> (Linnaeus, 1759)	62-63
<i>Callyspongia (Callyspongia) cf. fallax</i> Duchassaing & Michelotti, 1864	63
Niphatidae	64
<i>Niphates</i> cf. <i>amorpha</i> Van Soest, 1980	64
Petrosiidae	64-74
<i>Neopetrosia dutchi</i> Van Soest, Meesters & Becking, 2014	64-67
<i>Neopetrosia</i> cf. <i>eurystomata</i> Van Soest, Meesters & Becking, 2014	68
<i>Neopetrosia</i> sp. MPA-01 ^N	69
<i>Neopetrosia</i> sp. MPA-02 ^N	69-71
<i>Petrosia (Petrosia) aff. pellasarca</i> ^N (Laubenfels, 1934)	72
<i>Petrosia (Petrosia) sp.</i> MPA-01 ^N	73
<i>Petrosia (Strongylophora) stoneae</i> (van Soest & Stentoft, 1988)	74
Phloeodictyidae	75-77
<i>Oceanapia</i> aff. <i>robusta</i> (Bowerbank, 1866)	75
<i>Oceanapia</i> sp. MPA-01 ^N	76
<i>Oceanapia</i> aff. <i>stalagmitica</i> (Wiedenmayer, 1977)	76
<i>Siphonodictyon</i> sp. MPA-01	77
Merliida	78
Hamacanthidae	78
<i>Hamacantha</i> sp. MPA-01 ^N	78
Poecilosclerida	79-88
Poecilosclerida- MPA-01	79
Poecilosclerida- MPA-02	79
Poecilosclerida- MPA-03	80
Cladorhizidae	80-81

<i>Abyssocladia</i> sp. MPA-01 ^N	80-81
Hymedesmiidae	81
<i>Phorbis amaranthus</i> Duchassaing & Michelotti, 1864	81
Microcionidae	82-85
Microcionidae MPA-01	82
<i>Clathria (Clathria) foliacea</i> Topsent, 1889	83
<i>Clathria (Clathria)</i> sp. MPA-01 ^N	84-85
Podospongiidae	86
<i>Sceptrintus</i> cf. <i>richardi</i> ^N Topsent, 1898	86-88
Polymastiida	89
Polymastiidae	89
<i>Polymastia</i> sp. MPA-01	89
Suberitida	90-96
Halichondriidae	90-94
<i>Epipolasis</i> cf. <i>profunda</i> ^N Diaz, van Soest & Pomponi, 1993	90-91
<i>Spongosorites ruetzleri</i> (van Soest & Stentoft, 1988)	91-92
<i>Spongosorites siliquaria</i> van Soest & Stentoft, 1988	93
<i>Topsentia pseudoporrecta</i> Diaz, van Soest & Pomponi, 1993	93-94
Suberitidae	94-96
<i>Aaptos</i> sp. MPA-01 ^N	94-96
<i>Aaptos</i> sp. MPA-02	96
Tetractinellida	97-126
Tetractinellida MPA-01	97
Ancorinidae	97-98
<i>Asteropus niger</i> Hajdu & van Soest, 1992	97
<i>Stryphnus</i> sp. MPA-01 ^N	98
Azoricidae	99-101
<i>Leiodermatium lynceus</i> Schmidt, 1870	99-101
Corallistidae	101-104
<i>Corallistes typus</i> Schmidt, 1870	103-104
<i>Corallistes</i> cf. <i>typus</i> Schmidt, 1870	103-104
Geodiidae	105
Geodiidae MPA-01	105
<i>Erylus formosus</i> Sollas, 1886	105-106
<i>Geodia gibberosa</i> Lamarck, 1815	107-109
<i>Geodia</i> aff. <i>megastrella</i> Carter, 1876	109-110
<i>Geodia</i> cf. <i>neptuni</i> (Sollas, 1886)	110
<i>Geodia</i> sp. MPA-01	111
<i>Geodia</i> sp. MPA-02	111
<i>Geodia</i> sp. MPA-03	112
<i>Penares mastoideus</i> (Schmidt, 1880)	112
<i>Penares</i> sp. MPA-01 ^N	113
<i>Penares</i> sp. MPA-02	114

Pachastrellidae	114-121
Pachastrellidae MPA-01	114-115
<i>Characella aspera</i> Sollas, 1886	115-116
<i>Characella</i> sp. MPA-01 ^N	116-117
<i>Characella</i> sp. MPA-02 ^N	117-119
<i>Characella</i> sp. MPA-03 ^N	120
<i>Characella</i> sp. MPA-04 ^N	121
Scleritodermidae	122
<i>Aciculites cribrophora</i> (Schmidt, 1880)	122
Tetillidae	123
<i>Cinachyrella kuekenthali</i> (Uliczka, 1929)	123
Theonellidae	123-124
<i>Theonella wrightae</i> Pisera & Pomponi, 2015	123-124
Vulcanellidae	124-126
<i>Poecillastra</i> aff. <i>compressa</i> ^N (Bowerbank, 1866)	124-126
Verongiida	127-134
Aplysinidae	127-133
<i>Aiolochoroia crassa</i> (Hyatt, 1875)	127-128
<i>Aiolochoroia</i> sp. MPA-01	129
<i>Aplysina</i> cf. <i>cauliformis</i> (Carter, 1882)	129-130
<i>Aplysina</i> sp. MPA-01	130-131
<i>Aplysina</i> sp. MPA-02	131-132
<i>Aplysina</i> sp. MPA-03	132-133
<i>Aplysina</i> sp. MPA-04	133
lanthellidae	134
lanthellidae MPA-01	134
Demospongiae - -	135-140
Demospongiae MPA-07	135
Demospongiae MPA-08	135
Demospongiae MPA-09	136
Demospongiae MPA-11	136
Demospongiae MPA-12	137
Demospongiae MPA-16	137
Demospongiae MPA-24	138
Demospongiae MPA-25	138
Demospongiae MPA-26	139
Demospongiae MPA-28	139
Demospongiae MPA-30	140
Demospongiae MPA-38	140
<u>Homoscleromorpha</u>	<u>141</u>
Homosclerophorida	141
Plakinidae	141
<i>Corticium</i> sp. MPA-01	141

<u>Hexactinellida</u>	<u>142-163</u>
Amphidiscosida	142-143
Hyalonematidae	142-143
<i>Hyalonema</i> cf. <i>conqueror</i> Tabachnick, Menshenina, Lopes & Hajdu, 2009	142
<i>Hyalonema</i> (<i>Oonema</i>) sp. MPA-01	143
Lyssacinosida	144-156
Euplectellidae	144-150
<i>Hertwigia falcifera</i> Schmidt, 1880	144-147
<i>Heterotella</i> aff. <i>corbicula</i> ^N (Bowerbank, 1862)	148
<i>Heterotella</i> sp. MPA-01	148
<i>Regadrella</i> sp.	149
<i>Regadrella</i> sp. MPA-01	149-150
Rossellidae	150-156
<i>Nodastrella asconemaoida</i> Dohrmann, Göcke, Reed & Janussen, 2012	150-152
<i>Nodastrella nodastrella</i> (Topsent, 1915)	153
<i>Nodastrella</i> sp. MPA-01 ^N	154
<i>Vazella pourtalesii</i> (Schmidt, 1870)	155-156
Sceptrulophora	157-160
Aphrocallistidae	157-160
<i>Aphrocallistes beatrix</i> Gray, 1858	157-160
Euretidae	161-162
Euretidae MPA-01 ^N	161
<i>Conorete pourtalesi</i> Reiswig & Dohrmann, 2014	162
<i>Verrucocoeloidea liberatorii</i> Reiswig & Dohrmann, 2014	162
Hexactinellida MPA-01	163
Hexactinellida MPA-02	163
<u>Calcarea</u>	<u>164</u>
Leucosolenida	164
Grantiidae	164
<i>Leucandra</i> sp. MPA-01	164

References

- Alvarez B, van Soest RW, Rützler K. 1998. A revision of the Axinellidae (Porifera: Demospongiae) of the Central-West Atlantic region. *Smithsonian contributions to zoology*.
- Bean TP, Greenwood N, Beckett R, Biermann L, Bignell JP, Brant JL, Copp GH, Devlin MJ, Dye S, Feist SW et al. 2017. A Review of the Tools Used for Marine Monitoring in the UK: Combining Historic and Contemporary Methods with Modeling and Socioeconomics to Fulfill Legislative Needs and Scientific Ambitions. *Front Mar Sci*. 4:263. <http://dx.doi.org/10.3389/fmars.2017.00263>
- Benoist NMA, Morris KJ, Bett BJ, Durden JM, Huvenne VAI, Le Bas TP, Wynn RB, Ware SJ, Ruhl HA. 2019. Monitoring mosaic biotopes in a marine conservation zone by autonomous underwater vehicle. *Conservation Biology*. 33(5):1174-1186. <http://dx.doi.org/10.1111/cobi.13312>
- Boury-Esnault N, Rützler K. 1997. *Thesaurus of sponge morphology*. Smithsonian contributions to zoology.
- De Laubenfels M. 1952. Sponges from the Gulf of Mexico. *Bull Mar Sci*. 2(3):511-557.
- Díaz M, Busutil L, García-Hernández M, Pomponi S. 2019. *Cuba's Mesophotic Coral Reefs- Sponge Photo Identification Guide, Edition 1*
- Dohrmann M, Gocke C, Reed J, Janussen D. 2012. Integrative taxonomy justifies a new genus, *Nodastrella* gen. nov., for North Atlantic "*Rossella*" species (Porifera: Hexactinellida: Rossellidae). *Zootaxa*. 3383(3383):1-13.
- Farrington S, Reed JK, Harter S, David A. 2014. South Atlantic MPAs and deepwater coral HAPCs: Characterization of Benthic Habitat and Biota; NOAA Ship *Pisces* Cruise 13-03. No. HBOI Technical Report No. 153. p. 310. <http://www.cioert.org/wp-content/uploads/2020/03/2013-NOAA-Ship-Pisces-SE-USA-MPA-Cruise-Final-Report.pdf>.
- Federwisch L, Janussen D, Richter C. 2020. Macroscopic characteristics facilitate identification of common Antarctic glass sponges (Porifera, Hexactinellida, Rossellidae). *Polar Biol*. 43(2):91-110. <http://dx.doi.org/10.1007/s00300-019-02612-2>
- Freeman CJ, Gleason DF, Ruzicka R, Van Soest RW, Harvey AW, McFall G. 2007. A biogeographic comparison of sponge fauna from Gray's Reef National Marine Sanctuary and other hard-bottom reefs of coastal Georgia, USA. *Porifera research: biodiversity, innovation and sustainability Série Livros*. 28:319-325.
- George WC, Wilson HV. 1919. *Sponges of Beaufort (N.C.) Harbor and Vicinity*. U.S. Government Printing Office.
- Gomez P. 2014. The genus *Clathria* from the Gulf of Mexico and Mexican Caribbean, with redescription and resurrection of *Clathria carteri* (Poecilosclerida: Microcionidae). *Zootaxa*. 3790(1):51-85. <http://dx.doi.org/10.11646/zootaxa.3790.1.3>
- Harter S, David A, Reed JK, Farrington S. 2013. Semi-annual report. South Atlantic shelf-edge MPAs and deep-water coral HAPCs. Summary of accomplishments, April 1, 2013 to September 30, 2013. No. HBOI Technical Report No. 145. p. 5. <http://www.cioert.org/wp-content/uploads/2020/03/2013-Harter-Semi-annual-report.-South-Atlanti.pdf>.

- Harter S, David A, Reed JK, Farrington S. 2014a. Semi-annual report. South Atlantic shelf-edge MPAs and deep-water coral HAPCs. Summary of accomplishments, April 1, 2014 to September 30, 2014. No. HBOI Technical Report No. 153. p. 5. <http://www.cioert.org/wp-content/uploads/2020/03/2014-Harter-Semi-annual-report.-South-Atlantic.pdf>.
- Harter S, David A, Reed JK, Farrington S. 2014b. Semi-annual report. South Atlantic shelf-edge MPAs and deep-water coral HAPCs. Summary of accomplishments, Oct. 1, 2013 to March 31 2014. No. HBOI Technical Report No. 146. p. 4. <http://www.cioert.org/wp-content/uploads/2020/03/2013-2014-Harter-Semi-annual-report.-South-Atlantic.pdf>.
- Harter S, David A, Reed JK, Farrington S, Drummond F. 2019a. NOAA CIOERT cruise report South Atlantic MPAs and Oculina HAPC: characterization of benthic habitat and biota NOAA Ship *Pisces* Cruise 18-02 UNCW *Mohawk* ROV May 12-24, 2018. Harbor Branch Oceanographic Technical Report Number XXX. p. 318. <http://www.cioert.org/wp-content/uploads/2020/03/2018-NOAA-Ship-Pisces-SE-USA-MPA-Cruise-Final-Report.pdf>.
- Harter S, Reed JK, Farrington S, David A. 2015. South Atlantic MPAs and deepwater coral HAPCs: characterization of fish communities, benthic habitat, and benthic macrobiota. Final report for 2012-2014 NOAA cruises; a NOAA CIOERT report. No. HBOI Technical Report No. 160. p. 75. <http://www.cioert.org/wp-content/uploads/2020/03/2012-2014-NOAA-Ship-Pisces-SE-USA-MPA-Cruise-Final-Report.pdf>.
- Harter S, Reed JK, Farrington S, David A. 2016. NOAA CIOERT cruise report South Atlantic MPAs and Oculina HAPC: characterization of benthic habitat and biota NOAA Ship *Pisces* Cruise 15-02. UNCW *Mohawk* ROV June 18-29, 2015. Harbor Branch Oceanographic Technical Report Number. p. 202. <http://www.cioert.org/wp-content/uploads/2020/03/2015-NOAA-Ship-Pisces-SE-USA-MPA-Cruise-Final-Report.pdf>.
- Harter S, Reed JK, Farrington S, David A. 2017a. NOAA CIOERT cruise report South Atlantic MPAs and Oculina HAPC: characterization of benthic habitat and biota NOAA Ship *Pisces* Cruise 16-02 UNCW *Mohawk* ROV June 7-22, 2016. Harbor Branch Oceanographic Technical Report Number 181. p. 270 <http://www.cioert.org/wp-content/uploads/2020/03/2016-NOAA-Ship-Pisces-SE-USA-MPA-Cruise-Final-Report2.pdf>.
- Harter S, Reed JK, Farrington S, David A. 2018. South Atlantic MPAs and Oculina HAPC: Characterization of Fish Communities, Benthic Habitat, and Benthic Macrobiota Final Report for 2015-2017 NOAA Ship *Pisces* Cruises (15-02, 16-20, 17-02). Harbor Branch Oceanographic Technical Report Number 186. p. 97. <http://www.cioert.org/wp-content/uploads/2020/03/2015-18-NOAA-Ship-Pisces-SE-USA-MPA-Cruise-Final-Report.pdf>.
- Harter S, Reed JK, Farrington S, David A. 2019b. South Atlantic MPAs and Oculina HAPC: Characterization of Benthic Habitat and Biota. NOAA Ship *Pisces* Cruise 19-02. Harbor Branch Oceanographic Technical Report Number 193. p. 388. <http://www.cioert.org/wp-content/uploads/2020/01/2019-Harter-South-Atlantic-MPAs-and-Oculina-HAPC-Characterization-Cruise-19-02.pdf>.
- Harter S, Reed JK, Farrington S, David A. 2020. South Atlantic MPAs and Oculina HAPC: Characterization of fish communities, benthic habitat, and benthic macrobiota. Final

- Report for 2018-2019 NOAA Ship Pisces Cruises (18-02, 19-02). Harbor Branch Oceanographic Technical Report Number 194. p. 57
file:///Z:/Library/HBOI%20Faculty,%20employee%20publications/Technical%20report%20Hard%20copies/TR194_Reed%20_Farrington_FINAL%20COMBINED%202018-2019%20MPA%20Report%2012-18-2020.pdf.
- Harter S, Reed JK, Farrington S, David A, Drummond F. 2017b. South Atlantic MPAs and Oculina HAPC: Characterization of benthic habitat and biota. NOAA Ship Pisces Cruise 17-02. p. 341. <http://www.cioert.org/wp-content/uploads/2020/03/2017-NOAA-Ship-Pisces-SE-USA-MPA-Cruise-Final-Report.pdf>.
- Horton T, Marsh L, Bett BJ, Gates AR, Jones DOB, Benoist NMA, Pfeifer S, Simon-Lledo E, Durden JM, Vandepitte L et al. 2021. Recommendations for the Standardisation of Open Taxonomic Nomenclature for Image-Based Identifications. *Front Mar Sci.* 8:62. <http://dx.doi.org/10.3389/fmars.2021.620702>
- Kohler KE, Gill SM. 2006. Coral Point Count with Excel extensions (CPCe): A Visual Basic program for the determination of coral and substrate coverage using random point count methodology. *Comput Geosci-Uk.* 32(9):1259-1269. <http://dx.doi.org/10.1016/j.cageo.2005.11.009>
- Reed JK, Farrington S, David A, Harter S, Murfin D, Stierhoff K. 2013a. CIOERT SEADESC II Report: Extreme Corals 2011- South Atlantic Deep Coral Survey. NOAA Ship *Pisces* Cruise PC-11-03, May 31 - June 11, 2011. Report To: NOAA Office of Ocean Exploration and Research and NOAA Deep Sea Coral Research and Technology Program. Harbor Branch Oceanographic Institute Miscellaneous Contribution # 863. p. 146. https://data.nodc.noaa.gov/coris/library/NOAA/DSCRTP/Grants/NA09OAR4320073/2011_Pisces_CIOERT_Cruise-SEADESII_Report-FINAL_2-28-2013.pdf.
- Reed JK, Farrington S, Harter S, David A, Pomponi S. 2012. CIOERT SEADESC II Report: survey of the deep-sea coral and sponge ecosystems of Pourtales Terrace. Florida Shelf-Edge Exploration II (FLoSEE) Cruise, NOAA Ship *Nancy Foster*, Leg 2-September 23-30, 2011. Report to NOAA Office of Ocean Exploration and Research, and NOAA Deep Sea Coral Research and Technology Program: Harbor Branch Oceanographic Institute Miscellaneous Contribution # 851. p. 163. https://docs.lib.noaa.gov/noaa_documents/OAR/OER/CIOERT/cruise_reports/FLoSEE_2011_Leg2.pdf.
- Reed JK, Harter S, Farrington S, David A. 2013b. South Atlantic MPAs and deepwater coral HAPCs: Characterization of Benthic Habitat and Biota; NOAA Ship *Pisces* 2012 cruise. No. HBOI Technical Report No. 144. p. 410. <http://www.cioert.org/wp-content/uploads/2020/03/2012-NOAA-Ship-Pisces-SE-USA-MPA-Cruise-Final-Report.pdf>.
- Reed JK, Harter S, Farrington S, David A. 2015. South Atlantic MPAs and deepwater coral HAPCs: Characterization of benthic habitat, benthic macrobiota, and fish communities; NOAA Ship *Nancy Foster* 2014 cruise. No. HBOI Technical Report No. 159. p. 257. <http://www.cioert.org/wp-content/uploads/2020/03/2014-NOAA-Ship-Pisces-SE-USA-MPA-Cruise-Final-Report.pdf>.
- Reiswig HM. 2000. A new species of Heterotella (Porifera : Hexactinellida : Euplectellidae) from the West Indies. *P BIOL SOC WASH.* 113(2):572-578.

Reiswig HM, Dohrmann M. 2014. Three new species of glass sponges (Porifera: Hexactinellida) from the West Indies, and molecular phylogenetics of Euretidae and Auloplacidae (Sceptrulophora). *Zool J Linn Soc-Lond.* 171(2):233-253.

<http://dx.doi.org/10.1111/zoi12138>

Van Soest RWM, Boury-Esnault N, Hooper JNA, Rützler K, de Voogd NJ, Alvarez B, Hajdu E, Pisera AB, Manconi R, Schönberg C et al. 2021. World porifera database. [accessed 2021 July 19]. <http://www.marinespecies.org/porifera>.

Wells HW, Wells MJ, Gray IE. 1960. Marine sponges of North Carolina. 76(2):200-245.

Agelas citrina

Gotera & Alcolado, 1987



201805223_T-11-55-36_007.jpg

IDENTIFIER: M.C. Diaz, S. Pomponi *

Flabellate, overall size: 35.6 x 21.2 cm; red/orange; oscules: round, 2-5 mm wide.

CLASS:

Demospongiae

ORDER:

Agelasida

FAMILY:

Agelasidae

DEPTH:

52 m

LOCATION:

South Carolina, Northern South Carolina MPA; Ridge SC-7; 50 m

Agelas clathrodes

(Schmidt, 1870)



201207162_T-08-37-13_Dive31_044.jpg

IDENTIFIER: M.C. Diaz, S. Pomponi *

Thick fan, red/orange; oscules: round, keyholed.

CLASS:

Demospongiae

ORDER:

Agelasida

FAMILY:

Agelasidae

DEPTH:

50 m

LOCATION:

South Carolina, Northern S.C. MPA, southwest and outside MPA

Agelas clathrodes

(Schmidt, 1870)



201207162_T-08-34-41_Dive31_040.jpg

IDENTIFIER: M.C. Diaz, S. Pomponi *

Flabellate, overall size: 37 x 34 cm; red/orange; red/orange internally; oscules: round, keyholed.

CLASS:

Demospongiae

ORDER:

Agelasida

FAMILY:

Agelasidae

DEPTH:

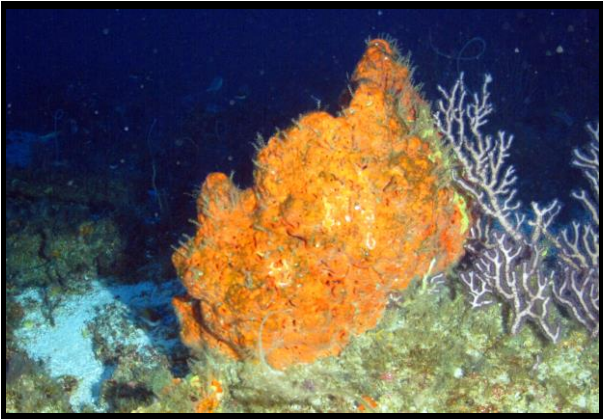
51 m

LOCATION:

South Carolina, Northern S.C.
MPA, southwest and outside MPA

Agelas clathrodes

(Schmidt, 1870)



201606151_T-09-50-09_017.jpg

IDENTIFIER: M.C. Diaz, S. Pomponi *

Flabellate, overall size: 50.4 x 44.9 cm; orange; oscules: round, keyholed.

CLASS:

Demospongiae

ORDER:

Agelasida

FAMILY:

Agelasidae

DEPTH:

64 m

LOCATION:

North Carolina, Snowy Wreck
MPA reef, 65 m

Agelas sventres

Lehnert & van Soest, 1996



201207143_T-10-17-15_Dive24_044.jpg

IDENTIFIER: M.C. Diaz, S. Pomponi, R. van Soest *

Massive/roundish, irregular, red/orange; oscules: abundant, keyholed, oscular membranes: collar.

CLASS:

Demospongiae

ORDER:

Agelasida

FAMILY:

Agelasidae

DEPTH:

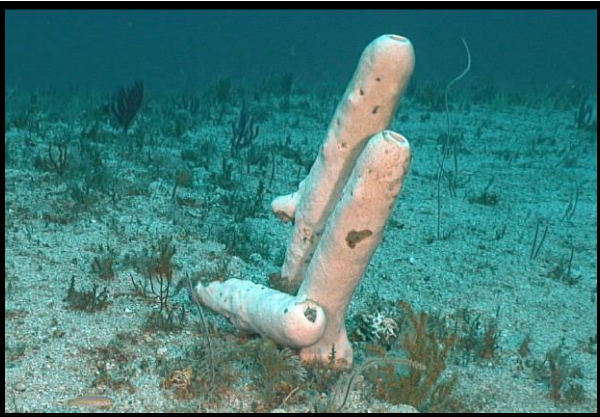
51 m

LOCATION:

South Carolina, Northern S.C.
MPA, inside MPA

Agelas tubulata

Lehnert & van Soest, 1996



201406202_T-13-44-59.jpg

IDENTIFIER: M.C. Diaz, S. Pomponi, R. van Soest *

Tube(s), smooth, white; oscules: apical atrium, occasional deformed holes on tube's outer side.

CLASS:

Demospongiae

ORDER:

Agelasida

FAMILY:

Agelasidae

DEPTH:

64 m

LOCATION:

South Carolina, Outside/Inside
Proposed Northern SC EXT, 75 m
Ridge

Auleta sp. MPA-01^N



200208242006.jpg

24-VIII-02-2-006

IDENTIFIER: M.C. Diaz, S. Pomponi ***

Single tube, pedunculated, 14 cm tall, 1-2.6 cm diameter; rugose, tan/white; oscules: round, oscular membranes: absent.

CLASS:

Demospongiae

ORDER:

Axinellida

FAMILY:

Axinellidae

DEPTH:

198 m

LOCATION:

South Carolina, ~85 Nm East of Charleston, SC; Charleston Lumps North, Phosphoritic Ridges

Auleta sp. MPA-01^N



200208242006_Deck1.jpg

24-VIII-02-2-006

IDENTIFIER: M.C. Diaz, S. Pomponi ***

Single tube, pedunculated, 14 cm tall, 1-2.6 cm diameter; rugose, tan/white; oscules: round, oscular membranes: absent.

CLASS:

Demospongiae

ORDER:

Axinellida

FAMILY:

Axinellidae

DEPTH:

198 m

LOCATION:

South Carolina, ~85 Nm East of Charleston, SC; Charleston Lumps North, Phosphoritic Ridges

Auleta tuberosa

Alvarez, van Soest & Rützler, 1998



201406201-T-09-00-51_062 .jpg

IDENTIFIER: M.C. Diaz, S. Pomponi *

Cluster of hollow tubes, smooth to rugose, orange/pink; oscules: present, oscules on top of tube(s), oscular membranes: present.

CLASS:

Demospongiae

ORDER:

Axinellida

FAMILY:

Axinellidae

DEPTH:

61 m

LOCATION:

South Carolina, Inside Proposed Devil's Hole 2, N/S 60 m Ridge

Auleta tuberosa

Alvarez, van Soest & Rützler, 1998



201406201-T-08-31-37_014b .jpg

IDENTIFIER: M.C. Diaz, S. Pomponi *

Cluster of hollow tubes, smooth/undulated, tan; oscules: present, oscules on top of tube(s).

CLASS:

Demospongiae

ORDER:

Axinellida

FAMILY:

Axinellidae

DEPTH:

61 m

LOCATION:

South Carolina, Inside Proposed Devil's Hole 2, N/S 60 m Ridge

Axinella polycapella

de Laubenfels, 1953



201307032-T-12-15-20_051 .jpg

IDENTIFIER: M.C. Diaz, S. Pomponi *

Branching, overall size: 18.5 x 8.9 cm; microhispid, red; oscules: not visible.

CLASS:

Demospongiae

ORDER:

Axinellida

FAMILY:

Axinellidae

DEPTH:

55 m

LOCATION:

Florida, Jacksonville, Inside N FL MPA, 60 m N-S ridge

Axinella pomponiae

Alvarez, van Soest & Rützler, 1998



201406244_T-17-34-44.jpg

IDENTIFIER: M.C. Diaz, S. Pomponi *

Branching, smooth, brown/yellow; oscules: round, 1-2 mm wide, oscular membranes: absent.

CLASS:

Demospongiae

ORDER:

Axinellida

FAMILY:

Axinellidae

DEPTH:

51 m

LOCATION:

South Carolina, Inside Edisto MPA, 47 m Ridge

Axinellidae MPA-01



201207102_T-10-29-43_Dive09_182.jpg

IDENTIFIER: M.C. Diaz, S. Pomponi *

Bush, short digitate terminations, overall size 14.1 x 14.1 cm; red; oscules: not visible.

CLASS:

Demospongiae

ORDER:

Axinellida

FAMILY:

Axinellidae

DEPTH:

51 m

LOCATION:

South Carolina, Edisto MPA, south ridge inside MPA

Axinellidae MPA-02



201406193-T-15-32-19_068 .jpg

IDENTIFIER: M.C. Diaz, S. Pomponi *

Flabellate, conulose, conules in row(s); red/orange; oscules: not visible.

CLASS:

Demospongiae

ORDER:

Axinellida

FAMILY:

Axinellidae

DEPTH:

71 m

LOCATION:

Georgia, Inside Proposed Georgia EXT, Southern Leg of 65 m V-Shaped Ridge

Axinellidae MPA-02



201307072-T-08-21-02_013 .jpg

IDENTIFIER: M.C. Diaz, S. Pomponi *

Fan/stalked, conulose, conules in row(s); red.

CLASS:

Demospongiae

ORDER:

Axinellida

FAMILY:

Axinellidae

DEPTH:

76 m

LOCATION:

North Carolina, proposed 780 bottom MPA, low relief hard bottom, 78 m

Phakellia connexiva

Ridley & Dendy, 1887



201106091_T-19-47-58_0435.jpg

IDENTIFIER: M.C. Diaz, S. Pomponi, R. van Soest *

Fan/stalked, pedunculated, overall size: 28.7 x 13.7 cm; ribbed; white; oscules: not visible.

CLASS:

Demospongiae

ORDER:

Axinellida

FAMILY:

Axinellidae

DEPTH:

354 m

LOCATION:

Florida, Deep Coral HAPC, SW Miami Terrace, Near Sonar WP #18

Endectyon (Endectyon) aff. tenax^N

(Schmidt, 1870)



200208262001_Deck.jpg

26-VIII-02-2-001

IDENTIFIER: M.C. Diaz, S. Pomponi ***

Fan/stalked, pedunculated, reticulated, tan; oscules: not visible, brittle;
(no in situ image available)

CLASS:

Demospongiae

ORDER:

Axinellida

FAMILY:

Raspailiidae

DEPTH:

534 m

LOCATION:

Georgia, ~90 Nm East of Savannah, Georgia; Savannah Lithoherms, Site 2, Pinnacle 5

***Biemna* sp. MPA-01^N**



200208271002.jpg

27-VIII-02-1-002

IDENTIFIER: M.C. Diaz, S. Pomponi ***

Massive, rugose, tan/light yellow; oscules: round, 3-4 mm wide, soft.

CLASS:

Demospongiae

ORDER:

Biemnida

FAMILY:

Biemnidae

DEPTH:

519 m

LOCATION:

Georgia, ~90 Nm East of Savannah, Georgia; Savannah Lithoherms; Site 2, Pinnacle 1

***Biemna* sp. MPA-01^N**



200208271002_Deck.jpg

27-VIII-02-1-002

IDENTIFIER: M.C. Diaz, S. Pomponi ***

Massive, rugose, tan/light yellow; oscules: round, abundant, 3-4 mm wide, soft.

CLASS:

Demospongiae

ORDER:

Biemnida

FAMILY:

Biemnidae

DEPTH:

519 m

LOCATION:

Georgia, ~90 Nm East of Savannah, Georgia; Savannah Lithoherms; Site 2, Pinnacle 1

Neofibularia nolitangere

(Duchassaing & Michelotti, 1864)



201805221_T-08-47-42_079.jpg

IDENTIFIER: M.C. Diaz, S. Pomponi **

Massive, overall size: 25.7 x 41.8 cm; convoluted, red/tan.

CLASS:

Demospongiae

ORDER:

Biemnida

FAMILY:

Biemnidae

DEPTH:

70 m

LOCATION:

South Carolina, Outside Northern South Carolina MPA; Ridge SC-5; 65 m

Neofibularia nolitangere

(Duchassaing & Michelotti, 1864)



201406202_T-13-01-09b.jpg

IDENTIFIER: M.C. Diaz, S. Pomponi **

Massive, convoluted, red/tan.

CLASS:

Demospongiae

ORDER:

Biemnida

FAMILY:

Biemnidae

DEPTH:

66 m

LOCATION:

South Carolina, Outside/Inside Proposed Northern SC EXT, 75 m Ridge

Neofibularia nolitangere

(Duchassaing & Michelotti, 1864)



201307093-T-10-14-49_001 .jpg

IDENTIFIER: M.C. Diaz, S. Pomponi **

Massive, overall size: 43 x 55.5 cm; convoluted, red/tan; oscules: large vent, apical, 15x6 cm wide.

CLASS:

Demospongiae

ORDER:

Biemnida

FAMILY:

Biemnidae

DEPTH:

72 m

LOCATION:

South Carolina, inside Northern South Carolina MPA, east slope of terrace, 70 m

Neofibularia nolitangere

(Duchassaing & Michelotti, 1864)



201906144001_T-16-37-20_013.jpg

14-VI-19-4-001

IDENTIFIER: J. Reed, M.C. Diaz, S. Pomponi ***

Massive, convoluted, red/tan; oscules: large vent, apical.

CLASS:

Demospongiae

ORDER:

Biemnida

FAMILY:

Biemnidae

DEPTH:

63 m

LOCATION:

South Carolina, Edisto MPA; ED-06; 60 m; ROV 19-19; UNCW 725

Neofibularia nolitangere

(Duchassaing & Michelotti, 1864)



CLASS:

Demospongiae

ORDER:

Biemnida

FAMILY:

Biemnidae

DEPTH:

63 m

LOCATION:

South Carolina, Edisto MPA; ED-06; 60 m; ROV 19-19; UNCW 725

201906144001_Deck1.JPG

14-VI-19-4-001

IDENTIFIER: J. Reed, M.C. Diaz, S. Pomponi ***

Massive, convoluted, red/tan; oscules: large vent, apical.

Acanthella cubensis

(Alcolado, 1984)



201406243_T-14-59-34.jpg

IDENTIFIER: M.C. Diaz, S. Pomponi *

Massive, rugose, hispid; orange; oscules: sparse, oscular membranes: translucent; compressible.

CLASS:

Demospongiae

ORDER:

Bubarida

FAMILY:

Dictyonellidae

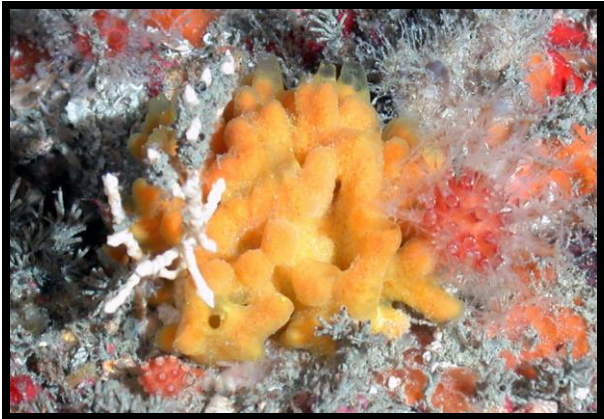
DEPTH:

54 m

LOCATION:

South Carolina, Inside Proposed Charleston Shelf MPA, Edge of 50 m Plateau

***Acanthella* sp. MPA-01**



201805172_T-18-25-47_047.jpg

IDENTIFIER: M.C. Diaz, S. Pomponi, R. van Soest *

Massive, digitate solid projections, velvet, orange; oscules: on top of lobe(s), oscular membranes: transparent.

CLASS:

Demospongiae

ORDER:

Bubarida

FAMILY:

Dictyonellidae

DEPTH:

77 m

LOCATION:

Florida, Oculina HAPC North, Off Titusville; 85 m

***Acanthella* sp. MPA-01**



201406263_T-15-00-38_063a.jpg

IDENTIFIER: M.C. Diaz, S. Pomponi, R. van Soest *

Massive, digitate solid projections, velvet, orange; oscles: on top of lobe(s), oscular membranes: transparent.

CLASS:

Demospongiae

ORDER:

Bubarida

FAMILY:

Dictyonellidae

DEPTH:

55 m

LOCATION:

Florida, Inside North Florida MPA,
70 m Ridge

Chondrilla caribensis

Rützler, Duran & Piantoni, 2007



201106052_T-20-27-31_7708.jpg

IDENTIFIER: M.C. Diaz, S. Pomponi *

Massive/thick encrusting, overall size: 40.9 x 60.7 cm; smooth, brown; oscules: abundant, round, compressible.

CLASS:

Demospongiae

ORDER:

Chondrillida

FAMILY:

Chondrillidae

DEPTH:

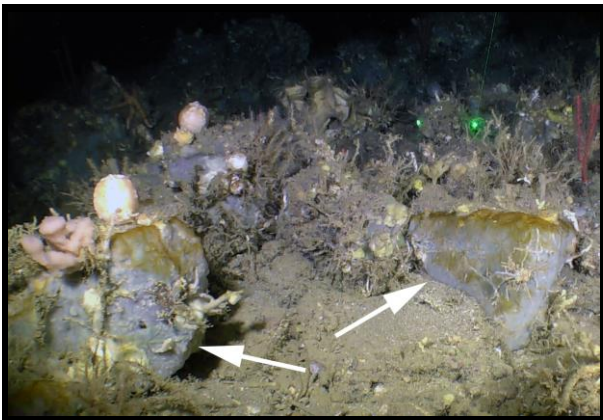
72 m

LOCATION:

Florida, Daytona Oculina Pinnacles, Site 2-- Reed's Reef Southern End Eastern Ridge

Halisarca caerulea

Vacelet & Donadey, 1987



201805212_T-15-21-44_264.jpg

IDENTIFIER: M.C. Diaz, S. Pomponi *

Thin encrusting, smooth and slippery, star-shaped canals; gray; oscules: round, common, 1-2 mm wide.

CLASS:

Demospongiae

ORDER:

Chondrillida

FAMILY:

Halisarcidae

DEPTH:

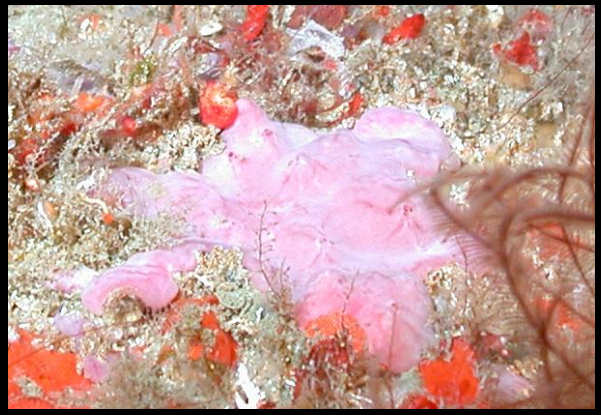
162 m

LOCATION:

South Carolina, Outside Northern South Carolina MPA; Iceberg Scour SC-2; 165 m

Halisarca caerulea

Vacelet & Donadey, 1987



201307032-T-13-14-12_139 .jpg

IDENTIFIER: M.C. Diaz, S. Pomponi *

Thin encrusting, smooth and slippery, pink; oscules: round, radial canals.

CLASS:

Demospongiae

ORDER:

Chondrillida

FAMILY:

Halisarcidae

DEPTH:

60 m

LOCATION:

Florida, Jacksonville, Inside N FL MPA, 60 m N-S ridge

Halisarca caerulea

Vacelet & Donadey, 1987



201207093_T-12-13-00_Dive07_007.jpg

IDENTIFIER: M.C. Diaz, S. Pomponi *

Thin encrusting, smooth and slippery, pink; oscules: round, radial canals.

CLASS:

Demospongiae

ORDER:

Chondrillida

FAMILY:

Halisarcidae

DEPTH:

48 m

LOCATION:

South Carolina, Edisto MPA, inside MPA, north ridge

Chondrosia collectrix

(Schmidt, 1870)



201307083-T-10-57-55_043 .jpg

IDENTIFIER: M.C. Diaz, S. Pomponi *

Massive/lobate, overall size: 8.2 x 9.9 cm; smooth, white/gray with red patches; oscules: sparse, round, 3-4 mm wide, oscular membranes: elevated.

CLASS:

Demospongiae

ORDER:

Chondrosiida

FAMILY:

Chondrosiidae

DEPTH:

81 m

LOCATION:

North Carolina, Outside Proposed N Cape Lookout NC MPA, deep slope and scour valley, 110 m

Chondrosia collectrix

(Schmidt, 1870)



201307025-T-16-12-48_052 C .jpg

IDENTIFIER: M.C. Diaz, S. Pomponi *

Massive/lobate, smooth, slippery; brown/tan; tan internally; oscules: sparse, round, oscular membranes: elevated.

CLASS:

Demospongiae

ORDER:

Chondrosiida

FAMILY:

Chondrosiidae

DEPTH:

57 m

LOCATION:

Florida, St. Augustine, Inside Proposed "St. Augustine 2" MPA, 60 m ridge

Chondrosia collectrix

(Schmidt, 1870)



201307083-T-10-41-09_010 .jpg

IDENTIFIER: M.C. Diaz, S. Pomponi *

Thick encrusting, branching lobate, overall size: 3.9 x 26.9 cm; smooth, black/gray; violet/tan internally; oscules: sparse, round, oscular membranes: elevated; cartilaginous.

CLASS:

Demospongiae

ORDER:

Chondrosiida

FAMILY:

Chondrosiidae

DEPTH:

87 m

LOCATION:

North Carolina, Outside Proposed N Cape Lookout NC MPA, deep slope and scour valley, 110 m

Cliona aff. Celata^N

Grant, 1826



201406193_T-15-37-24.jpg

IDENTIFIER: M.C. Diaz, S. Pomponi **

Massive, irregular flat top, overall size: 40 x 50 cm; papillate, round to oval papillae; white; oscules: abundant, apical/clustered, 0.5-1.5 cm wide, oscular membranes: white collar 0.5-1 cm high.

CLASS:

Demospongiae

ORDER:

Clionaida

FAMILY:

Clionaidae

DEPTH:

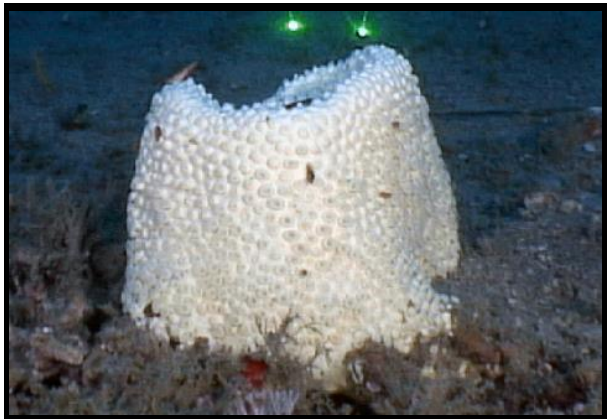
68 m

LOCATION:

Georgia, Inside Proposed Georgia EXT, Southern Leg of 65 m V-Shaped Ridge

Cliona aff. Celata^N

Grant, 1826



201406193_T-15-37-38.jpg

IDENTIFIER: M.C. Diaz, S. Pomponi, R. van Soest **

Massive, vasiform with top dipping at least 5 cm, overall size: 40 x 50 cm; papillate, round to oval inflated papillae; white; oscules: not visible.

CLASS:

Demospongiae

ORDER:

Clionaida

FAMILY:

Clionaidae

DEPTH:

69 m

LOCATION:

Georgia, Inside Proposed Georgia EXT, Southern Leg of 65 m V-Shaped Ridge

Cliona aff. Celata^N

Grant, 1826



201906154001_T-17-17-32_039.jpg

15-VI-19-4-001

IDENTIFIER: M.C. Diaz, S. Pomponi ***

Massive, irregular flat top, papillate, round papillae; Yellow-white/brown; oscules: on top, with membrane, 1 cm wide, oscular membranes: thick.

CLASS:

Demospongiae

ORDER:

Clionaida

FAMILY:

Clionaidae

DEPTH:

70 m

LOCATION:

Georgia, Outside GA MPA; 70 m;
ROV 19-23; UNCW 729

Cliona aff. Celata^N

Grant, 1826



201906154001_Deck1.JPG

15-VI-19-4-001

IDENTIFIER: M.C. Diaz, S. Pomponi ***

Massive, irregular flat top, papillate, roundish papillae, contracted; white/brown.

CLASS:

Demospongiae

ORDER:

Clionaida

FAMILY:

Clionaidae

DEPTH:

70 m

LOCATION:

Georgia, Outside GA MPA; 70 m;
ROV 19-23; UNCW 729

***Cliona* sp. MPA-01**



201106021_T-20-24-53_6251.jpg

IDENTIFIER: M.C. Diaz, S. Pomponi *

Massive/amorphous, overall size: 40.6 x 36.7 cm; rugose, orange/brown; oscules: sparse, apical, 5-10 mm wide.

CLASS:

Demospongiae

ORDER:

Clionaida

FAMILY:

Clionaidae

DEPTH:

58 m

LOCATION:

Florida, Jacksonville, North Florida
MPA Site, west ridge, A. David
Transect Site 1

***Cliona* sp. MPA-02^N**



201406241_T-08-25-45.jpg

IDENTIFIER: M.C. Diaz, S. Pomponi **

Massive/thick encrusting, papillate, clumps of 2-5 holes (0.5-1 mm wide); brown/tan; tan internally; oscules: apical, 5-10 mm wide, oscular membranes: white base and a translucent top; hard.

CLASS:

Demospongiae

ORDER:

Clionaida

FAMILY:

Clionaidae

DEPTH:

52 m

LOCATION:

South Carolina, Inside Proposed
Edisto Reconfig 3, 52 m Ridge

***Cliona* sp. MPA-02^N**



201106021_T-20-50-28_6294A.jpg

IDENTIFIER: M.C. Diaz, S. Pomponi **

Massive/thick encrusting, papillate, brown/tan; oscules: apical, in clusters, 5-10 mm wide, oscular membranes: whitish in color; hard.

CLASS:

Demospongiae

ORDER:

Clionaida

FAMILY:

Clionaidae

DEPTH:

58 m

LOCATION:

Florida, Jacksonville, North Florida
MPA Site, west ridge, A. David
Transect Site 1

***Cliona* sp. MPA-02^N**



201307045-T-17-01-43_115 .jpg

IDENTIFIER: M.C. Diaz, S. Pomponi **

Massive/amorphous, overall size: 19.3 x 20.3 cm; punctuated, brown; oscules: round, in clusters, 4-10 mm wide, oscular membranes: absent.

CLASS:

Demospongiae

ORDER:

Clionaida

FAMILY:

Clionaidae

DEPTH:

47 m

LOCATION:

South Carolina, Inside Edisto MPA
(and proposed Edisto Reconfig 3),
65 m NE-SW 3 mi ridge

***Cliona* sp. MPA-02^N**



201406241_T-08-25-35.jpg

IDENTIFIER: M.C. Diaz, S. Pomponi **

Massive/thick encrusting, papillate, brown/tan; oscules: apical, 5-10 mm wide, oscular membranes: whitish in color; hard.

CLASS:

Demospongiae

ORDER:

Clionaida

FAMILY:

Clionaidae

DEPTH:

52 m

LOCATION:

South Carolina, Inside Proposed Edisto Reconfig 3, 52 m Ridge

***Cliona* sp. MPA-02^N**



201805122_T-17-28-11_013.jpg

IDENTIFIER: M.C. Diaz, S. Pomponi **

Massive/amorphous, overall size: 21.7 x 23.4 cm; papillate, brown/tan; oscules: round, in clusters.

CLASS:

Demospongiae

ORDER:

Clionaida

FAMILY:

Clionaidae

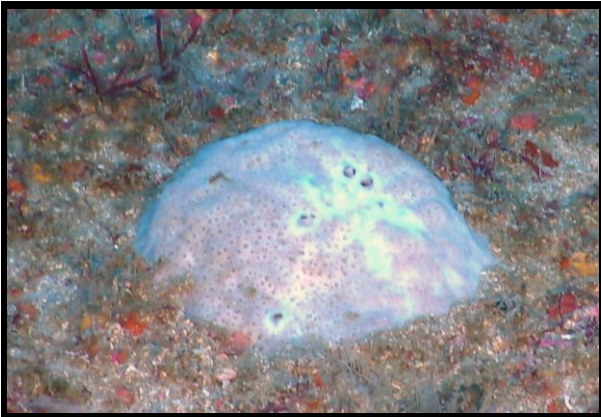
DEPTH:

59 m

LOCATION:

Florida, North Florida MPA; Target FL-1; 70 m

***Cliona* sp. MPA-02^N**



201805132002_T-10-07-31_739.jpg

13-V-18-2-002

IDENTIFIER: M.C Diaz, S. Pomponi ***

Massive/thick encrusting, smooth, rough to the touch; gray/brown; tan internally; oscules: apical, clumped, 5-10 mm wide, surface has flat papillae, clump of 3-5 holes, 0.5-1 mm each.

CLASS:

Demospongiae

ORDER:

Clionaida

FAMILY:

Clionaidae

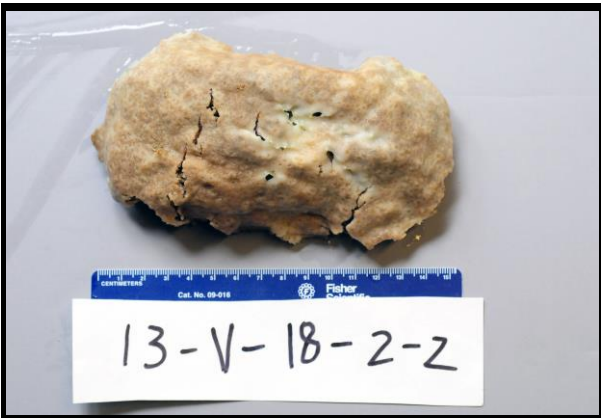
DEPTH:

57 m

LOCATION:

Florida, North Florida MPA;
Target FL-2; 70 m

***Cliona* sp. MPA-02^N**



201805132002_Deck03.JPG

13-V-18-2-002

IDENTIFIER: M.C Diaz, S. Pomponi ***

Massive/thick encrusting, smooth, rough to the touch; gray/brown; tan internally; oscules: apical, clumped, 5-10 mm wide, surface has flat papillae, clump of 3-5 holes, 0.5-1 mm each.

CLASS:

Demospongiae

ORDER:

Clionaida

FAMILY:

Clionaidae

DEPTH:

57 m

LOCATION:

Florida, North Florida MPA;
Target FL-2; 70 m

Cliona sp. MPA-02^N



201906141002_T-07-55-22_042.jpg

14-VI-19-1-002

IDENTIFIER: M.C Diaz, S. Pomponi ***

Massive/thick encrusting, smooth, rough to the touch; gray/brown; tan internally; oscules: apical, clumped, 5-10 mm wide, surface has flat papillae, clump of 3-5 holes, 0.5-1 mm each.

CLASS:

Demospongiae

ORDER:

Clionaida

FAMILY:

Clionaidae

DEPTH:

48 m

LOCATION:

South Carolina, Outside Edisto; ED-03; 100 m; ROV 19-16; UNCW 722

Cliona sp. MPA-02^N



201906141002_Deck1b.jpg

14-VI-19-1-002

IDENTIFIER: M.C Diaz, S. Pomponi ***

Massive/thick encrusting, smooth, rough to the touch; gray/brown; tan internally; oscules: apical, clumped, 5-10 mm wide, surface has flat papillae, clump of 3-5 holes, 0.5-1 mm each.

CLASS:

Demospongiae

ORDER:

Clionaida

FAMILY:

Clionaidae

DEPTH:

48 m

LOCATION:

South Carolina, Outside Edisto; ED-03; 100 m; ROV 19-16; UNCW 722

Sphaciospongia sp. MPA-01



201207104_T-17-07-32_Dive11_076.jpg

IDENTIFIER: M.C. Diaz, S. Pomponi *

Massive/globular, overall size: 15.7 x 21.7 cm; rugose, two type of apertures: small in clumps, and larger widely dispersed; white/brown.

CLASS:

Demospongiae

ORDER:

Clionaida

FAMILY:

Clionaidae

DEPTH:

49 m

LOCATION:

South Carolina, Edisto MPA, ridge north and outside MPA

Spirastrella coccinea

(Duchassaing & Michelotti, 1864)



201207074-T-15-40-11_Dive03_023.jpg

IDENTIFIER: M.C. Diaz, S. Pomponi *

Thick encrusting, smooth, red; oscules: sparse, 0.9-1.6 mm wide.

CLASS:

Demospongiae

ORDER:

Clionaida

FAMILY:

Spirastrellidae

DEPTH:

57 m

LOCATION:

Florida, North Florida MPA, inside MPA

Desmacella cf. pumilio

Schmidt, 1870



200508052005_2.jpg

5-VIII-05-2-005

IDENTIFIER: M.C. Diaz, S. Pomponi ***

Thick encrusting, smooth, porous; light yellow; oscules: not visible, soft; growing on dead-standing *Lophelia pertusa*.

CLASS:

Demospongiae

ORDER:

Desmacellida

FAMILY:

Desmacellidae

DEPTH:

607 m

LOCATION:

Florida; Miami Terrace, Lophelia Mound, Base of Escarpment, E. Of Reed Site Bu2

Desmacella cf. pumilio

Schmidt, 1870



200508052005_Deck1.JPG

5-VIII-05-2-005

IDENTIFIER: M.C. Diaz, S. Pomponi ***

Thick encrusting, smooth, translucent veil; tan/light yellow; oscules: not visible, soft; growing on dead *Lophelia pertusa*.

CLASS:

Demospongiae

ORDER:

Desmacellida

FAMILY:

Desmacellidae

DEPTH:

607 m

LOCATION:

Florida; Miami Terrace, Lophelia Mound, Base of Escarpment, E. Of Reed Site Bu2

Dysideidae MPA-01



201207093_T-13-49-46_Dive07_124.jpg

IDENTIFIER: M.C. Diaz, S. Pomponi *

Thick encrusting, pad, conulose, orange/tan; oscules: round, oscular membranes: transparent.

CLASS:

Demospongiae

ORDER:

Dictyoceratida

FAMILY:

Dysideidae

DEPTH:

46 m

LOCATION:

South Carolina, Edisto MPA, inside MPA, north ridge

Ircinia campana

(Lamarck, 1814)



201106021_T-19-11-43_6214.jpg

IDENTIFIER: M.C. Diaz, S. Pomponi *

Vase, 22.3 cm diameter; gray/pinkish; oscules: abundant, on inner wall.

CLASS:

Demospongiae

ORDER:

Dictyoceratida

FAMILY:

Irciniidae

DEPTH:

58 m

LOCATION:

Florida, Jacksonville, North Florida MPA Site, west ridge, A. David Transect Site 1

Ircinia campana

(Lamarck, 1814)



201207164_T-15-16-53_Dive33_079.jpg

IDENTIFIER: M.C. Diaz, S. Pomponi *

Cup, conulose, smooth inner wall; red/purple; oscules: abundant, on inner wall.

CLASS:

Demospongiae

ORDER:

Dictyoceratida

FAMILY:

Irciniidae

DEPTH:

47 m

LOCATION:

South Carolina, Northern S.C.
MPA, southwest and outside MPA

Ircinia campana

(Lamarck, 1814)



201406262_T-10-22-43_005.jpg

IDENTIFIER: M.C. Diaz, S. Pomponi *

Vase, conulose, irregular; red/purple; oscules: abundant, on inner wall.

CLASS:

Demospongiae

ORDER:

Dictyoceratida

FAMILY:

Irciniidae

DEPTH:

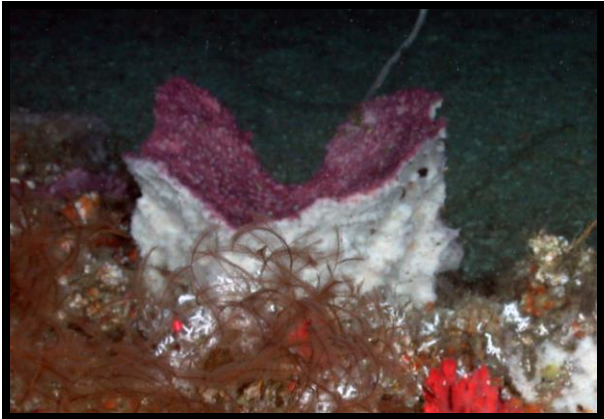
52 m

LOCATION:

Florida, Inside Proposed
Fernandina MPA, 70 m Ridge

Ircinia campana

(Lamarck, 1814)



201106021_T-20-19-04_6246a.jpg

IDENTIFIER: M.C. Diaz, S. Pomponi *

Vase, gray/purple; oscules: abundant, on inner wall.

CLASS:

Demospongiae

ORDER:

Dictyoceratida

FAMILY:

Irciniidae

DEPTH:

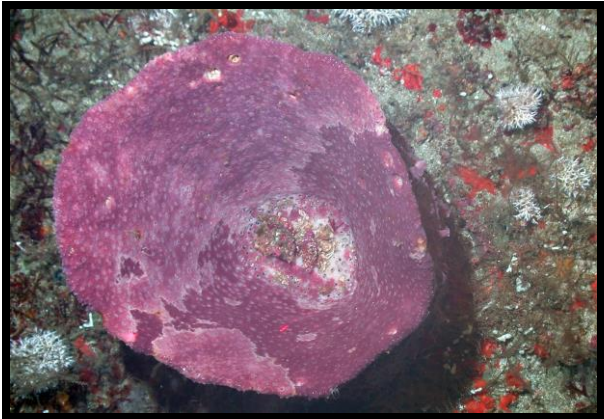
58 m

LOCATION:

Florida, Jacksonville, North Florida
MPA Site, west ridge, A. David
Transect Site 1

Ircinia campana

(Lamarck, 1814)



201207173_T-15-09-45_Dive35_017.jpg

IDENTIFIER: M.C. Diaz, S. Pomponi *

Plate, thick wall, conulose, one side with oscules; lilac; oscules: abundant.

CLASS:

Demospongiae

ORDER:

Dictyoceratida

FAMILY:

Irciniidae

DEPTH:

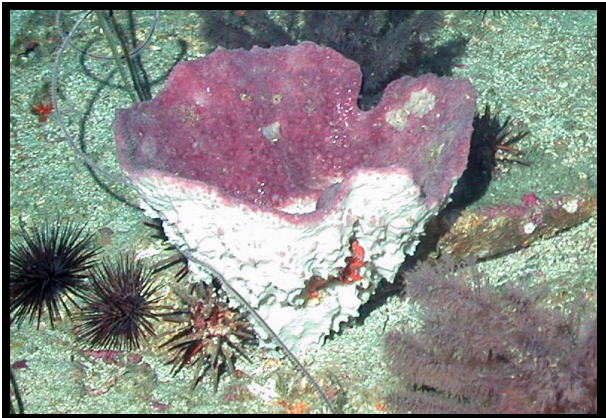
52 m

LOCATION:

Florida, North Florida MPA, ~10
nmi north of MPA

Ircinia campana

(Lamarck, 1814)



201207183_T-14-49-59_Dive37_039.jpg

IDENTIFIER: M.C. Diaz, S. Pomponi *

Cup, conulose, smooth inner wall; red/purple; oscules: abundant, on inner wall.

CLASS:

Demospongiae

ORDER:

Dictyoceratida

FAMILY:

Irciniidae

DEPTH:

54 m

LOCATION:

Florida, 55 nmi east of St. Augustine, 60-m reef line, outside of MPA

Ircinia campana

(Lamarck, 1814)



201307072-T-09-25-56_079 .jpg

IDENTIFIER: M.C. Diaz, S. Pomponi *

Vase, overall size: 47.3 x 53.9 cm; conulose, outer wall; gray/pinkish; oscules: abundant, on inner wall.

CLASS:

Demospongiae

ORDER:

Dictyoceratida

FAMILY:

Irciniidae

DEPTH:

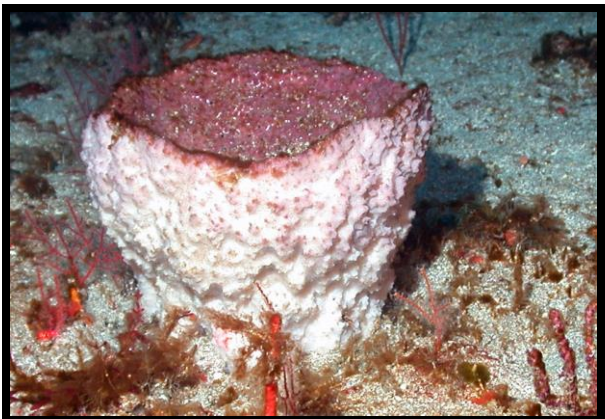
79 m

LOCATION:

North Carolina, proposed 780 bottom MPA, low relief hard bottom, 78 m

Ircinia campana

(Lamarck, 1814)



201207102_T-10-45-18_Dive09_212.jpg

IDENTIFIER: M.C. Diaz, S. Pomponi *

Cup, conulose, smooth inner wall; red/purple; oscules: abundant, on inner wall.

CLASS:

Demospongiae

ORDER:

Dictyoceratida

FAMILY:

Irciniidae

DEPTH:

50 m

LOCATION:

South Carolina, Edisto MPA, south ridge inside MPA

Ircinia campana

(Lamarck, 1814)



201106021_T-19-20-21_6219.jpg

IDENTIFIER: M.C. Diaz, S. Pomponi *

Cup, conulose, smooth inner wall; red/purple; oscules: abundant, on inner wall.

CLASS:

Demospongiae

ORDER:

Dictyoceratida

FAMILY:

Irciniidae

DEPTH:

61 m

LOCATION:

Florida, Jacksonville, North Florida MPA Site, west ridge, A. David Transect Site 1

Ircinia campana

(Lamarck, 1814)



201106051_T-15-18-14_7267.jpg

IDENTIFIER: M.C. Diaz, S. Pomponi *

Cup, white/gray with red patches; oscules: abundant, on inner wall, 2-4 mm wide.

CLASS:

Demospongiae

ORDER:

Dictyoceratida

FAMILY:

Irciniidae

DEPTH:

74 m

LOCATION:

Florida, Daytona Oculina
Pinnacles, Site 1 -- Reed's Reef

Ircinia felix

(Duchassaing & Michelotti, 1864)



201207172_T-12-24-37_Dive34_077.jpg

IDENTIFIER: M.C. Diaz, S. Pomponi *

Massive/amorphous, conulose, rounded conules; purple; oscules: sparse, round.

CLASS:

Demospongiae

ORDER:

Dictyoceratida

FAMILY:

Irciniidae

DEPTH:

57 m

LOCATION:

Florida, North Florida MPA, ~10
nmi north of MPA

Ircinia felix

(Duchassaing & Michelotti, 1864)



201207183_T-15-31-10_Dive37_108.jpg

IDENTIFIER: M.C. Diaz, S. Pomponi *

Massive/lobate, overall size: 28.1 x 38.4 cm; conulose, tightly conulose; oscules: on top of lobe(s), 5-10 mm wide, (conules 1-2 mm high, 1-2 mm apart).

CLASS:

Demospongiae

ORDER:

Dictyoceratida

FAMILY:

Irciniidae

DEPTH:

56 m

LOCATION:

Florida, 55 nmi east of St. Augustine, 60-m reef line, outside of MPA

Ircinia felix

(Duchassaing & Michelotti, 1864)



201207172_T-13-21-02_Dive34_139.jpg

IDENTIFIER: M.C. Diaz, S. Pomponi *

Massive, low conules, purple; oscules: sparse, round, oscular membranes: translucent white.

CLASS:

Demospongiae

ORDER:

Dictyoceratida

FAMILY:

Irciniidae

DEPTH:

51 m

LOCATION:

Florida, North Florida MPA, ~10 nmi north of MPA

Ircinia felix

(Duchassaing & Michelotti, 1864)



201207173_T-15-40-41_Dive35_065.jpg

IDENTIFIER: M.C. Diaz, S. Pomponi *

Massive/amorphous, conules, small; red wine; oscules: abundant, 2-3 mm wide, (conules 1-2 mm high, and apart).

CLASS:

Demospongiae

ORDER:

Dictyoceratida

FAMILY:

Irciniidae

DEPTH:

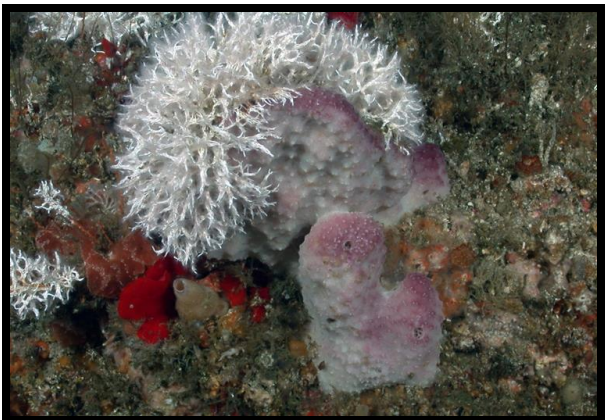
58 m

LOCATION:

Florida, North Florida MPA, ~10 nmi north of MPA

Ircinia felix

(Duchassaing & Michelotti, 1864)



201106021_T-19-09-50_6211.jpg

IDENTIFIER: M.C. Diaz, S. Pomponi *

Massive, conulose, small and tightly arranged conules; gray/pinkish; oscules: sparse, encrusted with polychaete worm: *Filigrana* sp..

CLASS:

Demospongiae

ORDER:

Dictyoceratida

FAMILY:

Irciniidae

DEPTH:

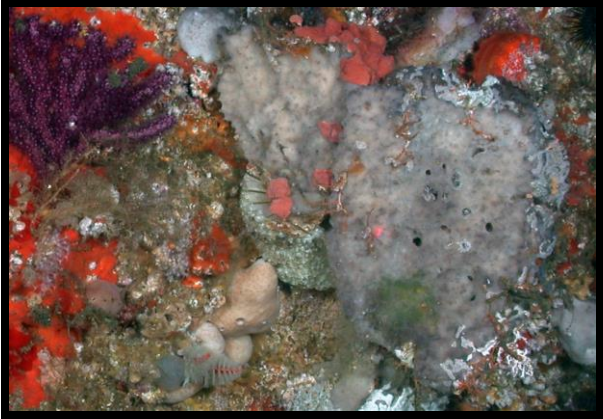
59 m

LOCATION:

Florida, Jacksonville, North Florida MPA Site, west ridge, A. David Transect Site 1

Ircinia felix

(Duchassaing & Michelotti, 1864)



201106021_T-22-03-23_6430a.jpg

IDENTIFIER: M.C. Diaz, S. Pomponi *

Massive, conulose, small and tightly arranged conules; black/gray; oscules: sparse.

CLASS:

Demospongiae

ORDER:

Dictyoceratida

FAMILY:

Irciniidae

DEPTH:

57 m

LOCATION:

Florida, Jacksonville, North Florida
MPA Site, west ridge, A. David
Transect Site 1

Ircinia felix

(Duchassaing & Michelotti, 1864)



201307054-T-15-22-19_050 .jpg

IDENTIFIER: M.C. Diaz, S. Pomponi *

Massive, overall size: 33.3 x 40 cm; conulose, small and tightly arranged conules; lilac; oscules: not visible.

CLASS:

Demospongiae

ORDER:

Dictyoceratida

FAMILY:

Irciniidae

DEPTH:

52 m

LOCATION:

South Carolina, Proposed
Charleston Shelf MPA, N and E
slopes of Terrace, 52 m

Ircinia cf. felix

(Duchassaing & Michelotti, 1864)



201106052_T-21-10-02_7839.jpg

IDENTIFIER: M.C. Diaz, S. Pomponi *

Massive/amorphous, overall size: 30.8 x 34.7 cm; conulose, irregular; tan; oscules: round/sparse, 2-7 mm wide, (conules 1-2 mm high, 2-6 mm apart).

CLASS:

Demospongiae

ORDER:

Dictyoceratida

FAMILY:

Irciniidae

DEPTH:

72 m

LOCATION:

Florida, Daytona Oculina Pinnacles, Site 2-- Reed's Reef Southern End Eastern Ridge

Ircinia cf. strobilina

(Lamarck, 1816)



201307025-T-16-06-46_040 .jpg

IDENTIFIER: M.C. Diaz, S. Pomponi *

Massive, overall size: 29.1 x 34.5 cm; conulose, widespread conules; gray; oscules: clustered, on apical depression, 1-2 mm wide, (conules: 5-15 mm high, 3-10 mm apart).

CLASS:

Demospongiae

ORDER:

Dictyoceratida

FAMILY:

Irciniidae

DEPTH:

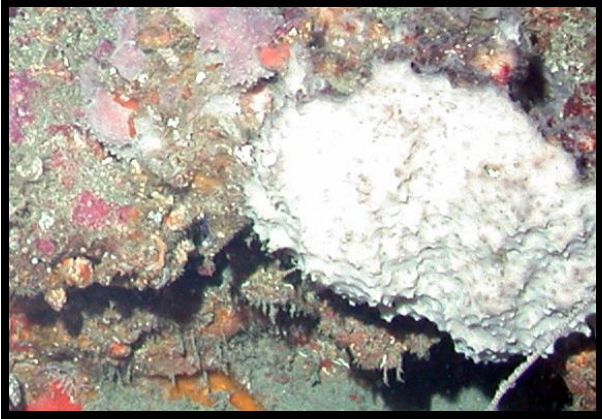
58 m

LOCATION:

Florida, St. Augustine, Inside Proposed "St. Augustine 2" MPA, 60 m ridge

Ircinia cf. strobilina

(Lamarck, 1816)



201207183_T-14-38-57_Dive37_023.jpg

IDENTIFIER: M.C. Diaz, S. Pomponi *

Massive/lobate, conulose, widespread conules; white/gray with red patches; oscules: sparse.

CLASS:

Demospongiae

ORDER:

Dictyoceratida

FAMILY:

Irciniidae

DEPTH:

54 m

LOCATION:

Florida, 55 nmi east of St. Augustine, 60-m reef line, outside of MPA

Ircinia cf. strobilina

(Lamarck, 1816)



201307032-T-13-11-07_133 .jpg

IDENTIFIER: M.C. Diaz, S. Pomponi *

Massive/amorphous, conulose, widespread conules; white/gray with red patches; oscules: clustered, on apical smooth depression.

CLASS:

Demospongiae

ORDER:

Dictyoceratida

FAMILY:

Irciniidae

DEPTH:

60 m

LOCATION:

Florida, Jacksonville, Inside N FL MPA, 60 m N-S ridge

Ircinia cf. strobilina

(Lamarck, 1816)



201406262_T-11-37-02_057.jpg

IDENTIFIER: M.C. Diaz, S. Pomponi *

Massive/clump(s), conulose, low and spaced conules; white/gray with red patches; oscules: abundant, in rows.

CLASS:

Demospongiae

ORDER:

Dictyoceratida

FAMILY:

Irciniidae

DEPTH:

54 m

LOCATION:

Florida, Inside Proposed
Fernandina MPA, 70 m Ridge

Sarcotragus sp. MPA-01^N



200208242003.jpg

24-VIII-02-2-003

IDENTIFIER: M.C. Diaz, S. Pomponi ***

Subglobular, erect, with tubular projections and lateral flattened short flaps, specimens are 5-14 cm tall; 3-5 cm wide; brown/red; tan internally; oscules: on top of tube(s), whitish, 2-4 mm wide, body compressible.

CLASS:

Demospongiae

ORDER:

Dictyoceratida

FAMILY:

Irciniidae

DEPTH:

198 m

LOCATION:

South Carolina, ~85 Nm East of
Charleston, SC; Charleston Lumps
North, Phosphoric Ridges

Sarcotragus sp. MPA-01^N



200208242003_Deck.jpg

24-VIII-02-2-003

IDENTIFIER: M.C. Diaz, S. Pomponi ***

Subglobular, erect, with tubular projections and lateral flattened short flaps, specimens are 5-14 cm tall; 3-5 cm wide; brown/red; tan internally; oscules: on top of tube(s), whitish, 2-4 mm wide, body compressible.

CLASS:

Demospongiae

ORDER:

Dictyoceratida

FAMILY:

Irciniidae

DEPTH:

198 m

LOCATION:

South Carolina, ~85 Nm East of Charleston, SC; Charleston Lumps North, Phosphoritic Ridges

Smenospongia echina

(Laubenfels, 1934)



200508081007_2.jpg

8-VIII-05-1-007

IDENTIFIER: M.C. Diaz, S. Pomponi ***

Massive/amorphous, lobate, conulose, yellow; oscules: on top of lobe(s), 3-5 mm wide, compressible.

CLASS:

Demospongiae

ORDER:

Dictyoceratida

FAMILY:

Thorectidae

DEPTH:

260 m

LOCATION:

Florida; Florida Keys; Off Long Key; Pourtales Terrace, Tennessee Bioherm #1

Smenospongia echina

(Laubenfels, 1934)



200508081007_Deck.jpg

8-VIII-05-1-007

IDENTIFIER: M.C. Diaz, S. Pomponi ***

Massive/amorphous, lobate, conulose, yellow; oscules: on top of lobe(s), 3-5 mm wide, compressible.

CLASS:

Demospongiae

ORDER:

Dictyoceratida

FAMILY:

Thorectidae

DEPTH:

260 m

LOCATION:

Florida; Florida Keys; Off Long Key; Pourtales Terrace, Tennessee Bioherm #1

Haplosclerida MPA-01



201307103-T-10-47-44_005 .jpg

IDENTIFIER: M.C. Diaz, S. Pomponi *

Branching, erect or repent branches, overall size: 4 x 18.4 cm; tan/pink; oscules: sparse, 2-6 mm wide.

CLASS:

Demospongiae

ORDER:

Haplosclerida

DEPTH:

157 m

LOCATION:

South Carolina, Northern S. Carolina MPA, iceberg scour, 160 m

Callyspongia (Cladochalina) aculeata

(Linnaeus, 1759)



201606141_T-08-57-24_058.jpg

IDENTIFIER: M.C. Diaz, S. Pomponi *

Cluster hollow tubes, comulose, gray/yellow/pink; oscules: abundant, inside of tube, this species is a senior synonym of the commonly known species *Callyspongia (C.) vaginalis* (Lamark 1814).

CLASS:

Demospongiae

ORDER:

Haplosclerida

FAMILY:

Callyspongiidae

DEPTH:

47 m

LOCATION:

South Carolina, Edisto MPA, 50 m

Callyspongia (Cladochalina) aculeata

(Linnaeus, 1759)



201606141_T-09-22-04_096.jpg

IDENTIFIER: M.C. Diaz, S. Pomponi *

Cluster hollow tubes, conulose, gray/yellow/pink; oscules: abundant, inside of tube, this species is a senior synonym of the commonly known species *Callyspongia (C.) vaginalis* (Lamarck 1814)

CLASS:

Demospongiae

ORDER:

Haplosclerida

FAMILY:

Callyspongiidae

DEPTH:

46 m

LOCATION:

South Carolina, Edisto MPA, 50 m

Callyspongia (Callyspongia) cf. fallax

Duchassaing & Michelotti, 1864



201406251_T-08-56-40_055b.jpg

IDENTIFIER: M.C. Diaz, S. Pomponi *

Tube(s), short, smooth, pink; oscules: one on top, 1.5 cm wide.

CLASS:

Demospongiae

ORDER:

Haplosclerida

FAMILY:

Callyspongiidae

DEPTH:

49 m

LOCATION:

South Carolina, Inside Edisto MPA, Large 48 m Plateau

Niphates cf. amorpha

Van Soest, 1980



201207144_T-13-15-38_Dive25_106.jpg

IDENTIFIER: M.C. Diaz, S. Pomponi *

Cushion, porous to microhispid, pink; oscules: sparse, oscular membranes: transparent.

CLASS:

Demospongiae

ORDER:

Haplosclerida

FAMILY:

Niphatidae

DEPTH:

50 m

LOCATION:

South Carolina, Northern S.C.
MPA, inside MPA

Neopetrosia dutchi

Van Soest, Meesters & Becking, 2014



201406203_T-15-24-40.jpg

IDENTIFIER: M.C. Diaz, S. Pomponi **

Massive/lobate, cluster of lobes, overall size: 23.1 x 29.9 cm; punctuated, white/gray with red patches; oscules: on top of lobe(s), 1-1.5 cm wide, oscular membranes: translucent.

CLASS:

Demospongiae

ORDER:

Haplosclerida

FAMILY:

Petrosiidae

DEPTH:

69 m

LOCATION:

South Carolina, Inside Northern
South Carolina MPA, 75 m Slope

Neopetrosia dutchi

Van Soest, Meesters & Becking, 2014



200208222006.jpg

22-VIII-02-2-006

IDENTIFIER: M.C. Diaz, S. Pomponi ***

Cluster of hollow tubes, smooth, tan; oscules: apical, 3-10 mm wide.

CLASS:

Demospongiae

ORDER:

Haplosclerida

FAMILY:

Petrosiidae

DEPTH:

647 m

LOCATION:

South Carolina, ~120 Nm S.E. of Charleston, SC; Stetson's Banks, Lophelia Coral Reef, Reed's Pinnacle

Neopetrosia dutchi

Van Soest, Meesters & Becking, 2014



200208222006_Deck.jpg

22-VIII-02-2-006

IDENTIFIER: M.C. Diaz, S. Pomponi ***

Cluster of hollow tubes, smooth, tan; oscules: apical, 3-10 mm wide.

CLASS:

Demospongiae

ORDER:

Haplosclerida

FAMILY:

Petrosiidae

DEPTH:

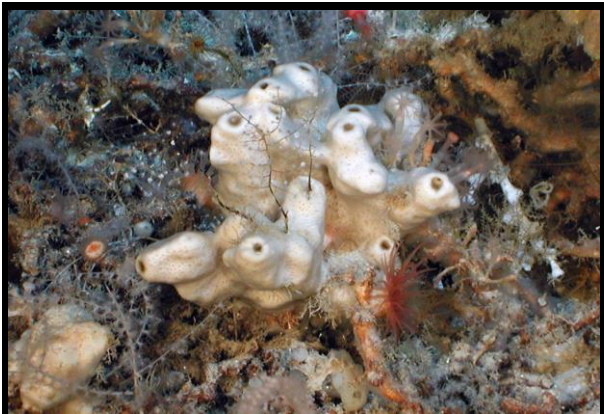
647 m

LOCATION:

South Carolina, ~120 Nm S.E. of Charleston, SC; Stetson's Banks, Lophelia Coral Reef, Reed's Pinnacle

Neopetrosia dutchi

Van Soest, Meesters & Becking, 2014



200208291007_2.JPG

29-VIII-02-1-007

IDENTIFIER: M.C. Diaz, S. Pomponi ***

Massive/lobate, smooth, tan/white; oscules: present, 2-6 mm wide.

CLASS:

Demospongiae

ORDER:

Haplosclerida

FAMILY:

Petrosiidae

DEPTH:

554 m

LOCATION:

Georgia, ~90 Nm East of Jacksonville, Florida; Jacksonville Lithoherm Pinnacles, Pinnacle 1 Peak 6

Neopetrosia dutchi

Van Soest, Meesters & Becking, 2014



200208291007_Deck1.JPG

29-VIII-02-1-007

IDENTIFIER: M.C. Diaz, S. Pomponi ***

Massive/lobate, smooth, tan/white; oscules: present, 2-6 mm wide.

CLASS:

Demospongiae

ORDER:

Haplosclerida

FAMILY:

Petrosiidae

DEPTH:

554 m

LOCATION:

Georgia, ~90 Nm East of Jacksonville, Florida; Jacksonville Lithoherm Pinnacles, Pinnacle 1 Peak 6

Neopetrosia dutchi

Van Soest, Meesters & Becking, 2014



200405301016_1.jpg

30-V-04-1-016

IDENTIFIER: M.C. Diaz, S. Pomponi ***

Massive/lobate, smooth, tan/white; oscules: on top of lobe(s), 2-10 mm wide.

CLASS:

Demospongiae

ORDER:

Haplosclerida

FAMILY:

Petrosiidae

DEPTH:

178 m

LOCATION:

Florida; Florida Keys, Pourtales Terrace, Alligator Bump Lithoherm #1, North Peak (=22-Viii-99-1)

Neopetrosia dutchi

Van Soest, Meesters & Becking, 2014



200405301016_Deck.jpg

30-V-04-1-016

IDENTIFIER: M.C. Diaz, S. Pomponi ***

Massive/lobate, smooth, tan/white; oscules: on top of lobe(s), 2-10 mm wide.

CLASS:

Demospongiae

ORDER:

Haplosclerida

FAMILY:

Petrosiidae

DEPTH:

178 m

LOCATION:

Florida; Florida Keys, Pourtales Terrace, Alligator Bump Lithoherm #1, North Peak (=22-Viii-99-1)

Neopetrosia cf. eurytomata

Van Soest, Meesters & Becking, 2014



200508081006_2.jpg

8-VIII-05-1-006

IDENTIFIER: M.C. Diaz, S. Pomponi ***

Massive, conulose, irregular; white; oscules: not visible, conules 3-6 mm high; 3-6 mm wide at base.

CLASS:

Demospongiae

ORDER:

Haplosclerida

FAMILY:

Petrosiidae

DEPTH:

263 m

LOCATION:

Florida; Florida Keys; Off Long Key; Pourtales Terrace, Tennessee Bioherm #1

Neopetrosia cf. eurytomata

Van Soest, Meesters & Becking, 2014



200508081006_Deck.jpg

8-VIII-05-1-006

IDENTIFIER: M.C. Diaz, S. Pomponi ***

Massive, conulose, irregular; white; oscules: not visible, conules 3-6 mm high; 3-6 mm wide at base.

CLASS:

Demospongiae

ORDER:

Haplosclerida

FAMILY:

Petrosiidae

DEPTH:

263 m

LOCATION:

Florida; Florida Keys; Off Long Key; Pourtales Terrace, Tennessee Bioherm #1

Neopetrosia sp. MPA-01^N



200508061013_Deck.JPG

6-VIII-05-1-013

IDENTIFIER: M.C. Diaz, S. Pomponi ***

Massive, rugose, tan; oscules: not visible,
(no in situ image available)

CLASS:

Demospongiae

ORDER:

Haplosclerida

FAMILY:

Petrosiidae

DEPTH:

338 m

LOCATION:

Florida; Miami Terrace
Escarpment, Reed Site Bu2

Neopetrosia sp. MPA-02^N



201106091_T-19-46-42_0429.jpg

IDENTIFIER: M.C. Diaz, S. Pomponi **

Cone shaped, elongated, large tube: 34.8 x 10.7 cm, small tube: 13.2 x 7 cm; rugose to convoluted, porous; tan/white; oscules: apical, oscular membranes: smooth firm collar 1-2 cm high.

CLASS:

Demospongiae

ORDER:

Haplosclerida

FAMILY:

Petrosiidae

DEPTH:

353 m

LOCATION:

Florida, Deep Coral HAPC, SW
Miami Terrace, Near Sonar WP
#18

Neopetrosia sp. MPA-02^N



200504141003_1.jpg

14-IV-05-1-003

IDENTIFIER: M.C. Diaz, S. Pomponi ***

Tube(s), rugose, tan/white; tan internally; oscules: inner wall, oscular membranes: absent; hard and crumbly.

CLASS:

Demospongiae

ORDER:

Haplosclerida

FAMILY:

Petrosiidae

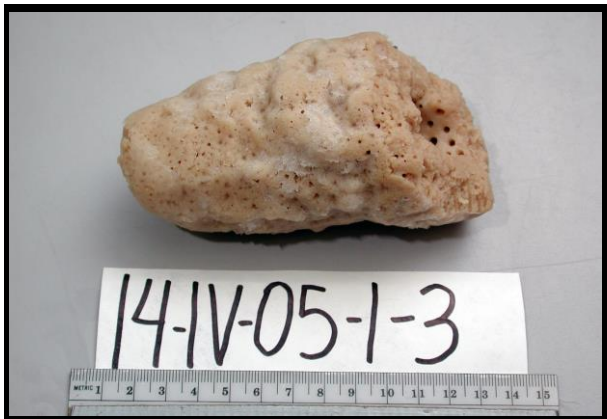
DEPTH:

434 m

LOCATION:

Florida; East of Fowey Rocks,
Miami Terrace Escarpment, Reed
Site Bu-1

Neopetrosia sp. MPA-02^N



200504141003_deck1.jpg

14-IV-05-1-003

IDENTIFIER: M.C. Diaz, S. Pomponi ***

Tube(s), rugose, tan/white; tan internally; oscules: inner wall, oscular membranes: absent; hard and crumbly.

CLASS:

Demospongiae

ORDER:

Haplosclerida

FAMILY:

Petrosiidae

DEPTH:

434 m

LOCATION:

Florida; East of Fowey Rocks,
Miami Terrace Escarpment, Reed
Site Bu-1

Neopetrosia sp. MPA-02^N



200508161008_1.jpg

16-VIII-05-1-008

IDENTIFIER: M.C. Diaz, S. Pomponi ***

Cone shaped, rugose, tan/white; oscules: apical, with collar.

CLASS:

Demospongiae

ORDER:

Haplosclerida

FAMILY:

Petrosiidae

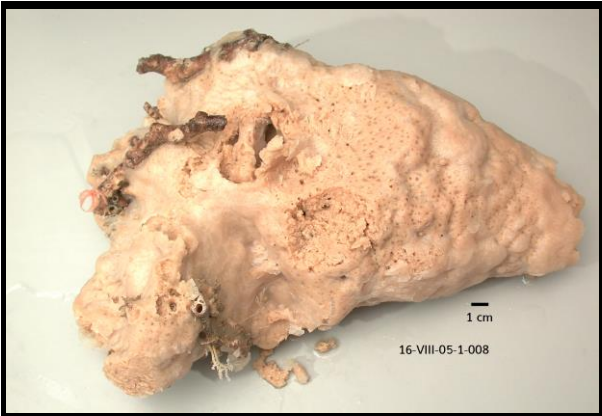
DEPTH:

733 m

LOCATION:

Florida; Straits of Florida; Fort
Pierce, Lophelia Bioherm

Neopetrosia sp. MPA-02^N



200508161008_Deck.JPG

16-VIII-05-1-008

IDENTIFIER: M.C. Diaz, S. Pomponi ***

Cone shaped, rugose, tan/white; oscules: apical, with collar.

CLASS:

Demospongiae

ORDER:

Haplosclerida

FAMILY:

Petrosiidae

DEPTH:

733 m

LOCATION:

Florida; Straits of Florida; Fort
Pierce, Lophelia Bioherm

Petrosia (Petrosia) aff. Pellasarca^N

(Laubenfels, 1934)



200508032001_1.jpg

3-VIII-05-2-001

IDENTIFIER: M.C. Diaz, S. Pomponi ***

Fan/stalked, undulating, porous, white; oscules: present, on one side, 0.3-0.5 mm wide, brittle.

CLASS:

Demospongiae

ORDER:

Haplosclerida

FAMILY:

Petrosiidae

DEPTH:

287 m

LOCATION:

Florida; ~13 nm E. of Pompano;
Miami Terrace Escarp., Reed-Bu5,
E. Ridge

Petrosia (Petrosia) aff. Pellasarca^N

(Laubenfels, 1934)



200508032001_Deck.jpg

3-VIII-05-2-001

IDENTIFIER: M.C. Diaz, S. Pomponi ***

Fan/stalked, undulating, porous, white; oscules: present, 0.3-0.5 mm on one side of the body wide, brittle.

CLASS:

Demospongiae

ORDER:

Haplosclerida

FAMILY:

Petrosiidae

DEPTH:

287 m

LOCATION:

Florida; ~13 nm E. of Pompano;
Miami Terrace Escarp., Reed-Bu5,
E. Ridge

Petrosia (Petrosia) sp. MPA-01^N



201805223_T-12-15-12_031.jpg

IDENTIFIER: M.C. Diaz, S. Pomponi **

Creeping/branching, with some flat branches, smooth, red wine; white internally; oscules: present, on upper side.

CLASS:

Demospongiae

ORDER:

Haplosclerida

FAMILY:

Petrosiidae

DEPTH:

52 m

LOCATION:

South Carolina, Northern South Carolina MPA; Ridge SC-7; 50 m

Petrosia (Petrosia) sp. MPA-01^N



201406203-T-15-52-47_047 .jpg

IDENTIFIER: M.C. Diaz, S. Pomponi **

Creeping/branching, branches flattened, smooth, red/purple; white internally; oscules: present, on upper side.

CLASS:

Demospongiae

ORDER:

Haplosclerida

FAMILY:

Petrosiidae

DEPTH:

72 m

LOCATION:

South Carolina, Inside Northern South Carolina MPA, 75 m Slope

Petrosia (Strongylophora) stoneae

(van Soest & Stentoft, 1988)



200208242004.jpg

24-VIII-02-2-004

IDENTIFIER: M.C. Diaz, S. Pomponi ***

Spherical, porous, tan internally; oscules: apical, 5 mm wide.

CLASS:

Demospongiae

ORDER:

Haplosclerida

FAMILY:

Petrosiidae

DEPTH:

198 m

LOCATION:

South Carolina, ~85 Nm East of Charleston, SC; Charleston Lumps North, Phosphoritic Ridges

Petrosia (Strongylophora) stoneae

(van Soest & Stentoft, 1988)



200208242004_Deck.jpg

24-VIII-02-2-004

IDENTIFIER: M.C. Diaz, S. Pomponi ***

Spherical, porous, tan internally; oscules: apical, 5 mm wide.

CLASS:

Demospongiae

ORDER:

Haplosclerida

FAMILY:

Petrosiidae

DEPTH:

198 m

LOCATION:

South Carolina, ~85 Nm East of Charleston, SC; Charleston Lumps North, Phosphoritic Ridges

Oceanapia aff. robusta

(Bowerbank, 1866)



200508071008_1.jpg

7-VIII-05-1-008

IDENTIFIER: M.C. Diaz, S. Pomponi, R. van Soest ***

Massive, digitate fistules, (10 cm high); covered by short fistules, 2-3 mm wide, 2-3 cm high; tan/pink; pink internally; oscules: not visible, compressible.

CLASS:

Demospongiae

ORDER:

Haplosclerida

FAMILY:

Phloeodictyidae

DEPTH:

193 m

LOCATION:

Florida; Florida Keys; Pourtales Terrace; Alligator Bioherm Site 4

Oceanapia aff. robusta

(Bowerbank, 1866)



200508071008_Deck1.JPG

7-VIII-05-1-008

IDENTIFIER: M.C. Diaz, S. Pomponi, R. van Soest ***

Massive, digitate fistules, (10 cm high); covered by short fistules, 2-3 mm wide, 2-3 cm high; tan/pink; darker internally; oscules: not visible, compressible.

CLASS:

Demospongiae

ORDER:

Haplosclerida

FAMILY:

Phloeodictyidae

DEPTH:

193 m

LOCATION:

Florida; Florida Keys; Pourtales Terrace; Alligator Bioherm Site 4

***Oceanapia* sp. MPA-01^N**



200208222001.jpg

22-VIII-02-2-001

IDENTIFIER: M.C. Diaz, S. Pomponi, R. van Soest ***

Spherical, oscular chimney, (8.5 cm tall, 2 cm wide); smooth, white; oscules: apical, 2 cm wide.

CLASS:

Demospongiae

ORDER:

Haplosclerida

FAMILY:

Phloeodictyidae

DEPTH:

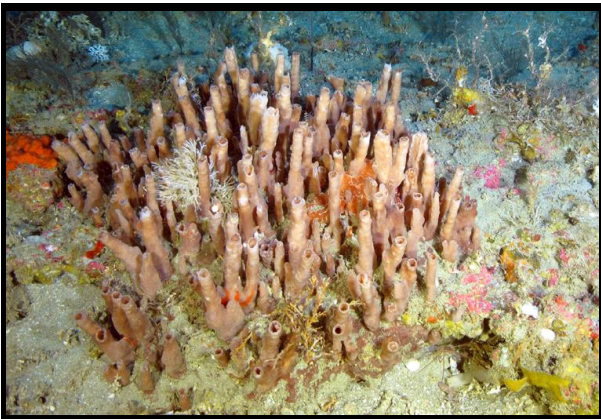
639 m

LOCATION:

South Carolina, ~120 Nm S.E. of Charleston, SC; Stetson's Banks, Lophelia Coral Reef, Reed's Pinnacle

Oceanapia* aff. *stalagmitica

(Wiedenmayer, 1977)



201706252_T-09-56-50_145.jpg

IDENTIFIER: M.C. Diaz, S. Pomponi, R. van Soest *

Massive with fistules, smooth, red/brown; oscules: on top of tube(s), abundant hollow tubes and few fistules coming from a basal mass buried in sediment.

CLASS:

Demospongiae

ORDER:

Haplosclerida

FAMILY:

Phloeodictyidae

DEPTH:

65 m

LOCATION:

Georgia, 5 mi West of Georgia MPA; 68 m; Target GA-4&3; ROV 17-07; UNCW 456

***Siphonodictyon* sp. MPA-01**



201805201_T-09-38-53_136.jpg

IDENTIFIER: M.C. Diaz, S. Pomponi *

Cluster hollow tubes, individual tubes: 4-9 cm high, 2.7-3.8 cm high; white; oscules: on top of tube(s), 10-18 mm wide.

CLASS:

Demospongiae

ORDER:

Haplosclerida

FAMILY:

Phloeodictyidae

DEPTH:

64 m

LOCATION:

Georgia, Outside Georgia MPA;
Target GA-2; 61 m

***Siphonodictyon* sp. MPA-01**



201406191_T-08-41-17.jpg

IDENTIFIER: M.C. Diaz, S. Pomponi *

Cluster hollow tubes, rugose, white; oscules: on top of tube(s), oscular membranes: absent; This specimen probably belongs to either *Siphonodictyon* or *Oceanapia*. A sample would be required for finer identification.

CLASS:

Demospongiae

ORDER:

Haplosclerida

FAMILY:

Phloeodictyidae

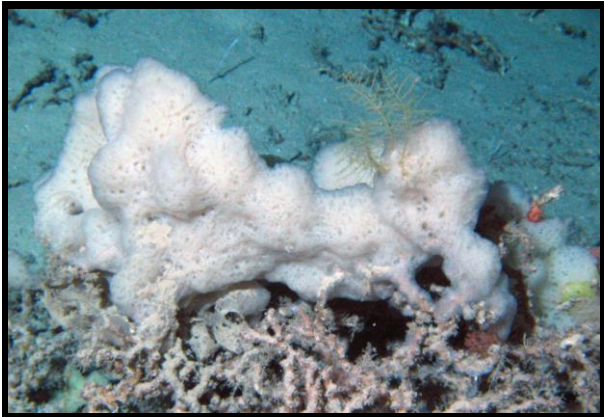
DEPTH:

63 m

LOCATION:

Georgia, Inside Proposed Georgia
MPA Reconfig, 65 m SW/NE Ridge

Hamacantha sp. MPA-01^N



200508161004_1.jpg

16-VIII-05-1-004

IDENTIFIER: M.C. Diaz, S. Pomponi ***

Massive/amorphous, with small mounds, porous, tan; oscules: not distinguishable, soft.

CLASS:

Demospongiae

ORDER:

Merliida

FAMILY:

Hamacanthidae

DEPTH:

742 m

LOCATION:

Florida; Straits of Florida; Fort
Pierce, Lophelia Bioherm

Hamacantha sp. MPA-01^N



200508161004_Deck.JPG

16-VIII-05-1-004

IDENTIFIER: M.C. Diaz, S. Pomponi ***

Massive/amorphous, with small mounds, porous, tan; oscules: not distinguishable, soft.

CLASS:

Demospongiae

ORDER:

Merliida

FAMILY:

Hamacanthidae

DEPTH:

742 m

LOCATION:

Florida; Straits of Florida; Fort
Pierce, Lophelia Bioherm

Poecilosclerida- MPA-01



201406232_T-11-26-01b.jpg

IDENTIFIER: M.C. Diaz, S. Pomponi *

Massive/lobate, or encrusting, covered with dermal veil, red; oscules: round, < 1 cm wide, oscular membranes: transparent.

CLASS:

Demospongiae

ORDER:

Poecilosclerida

DEPTH:

102 m

LOCATION:

North Carolina, Outside/Inside
Proposed North Cape Lookout 3,
Edge of 104 m Ravine

Poecilosclerida- MPA-02



201207123_T-13-13-11_Dive17_038.jpg

IDENTIFIER: M.C. Diaz, S. Pomponi *

Thick encrusting, rugose, microconulose; orange; oscules: round, oscular membranes: transparent.

CLASS:

Demospongiae

ORDER:

Poecilosclerida

DEPTH:

82 m

LOCATION:

North Carolina, N.C. MPA,
Steeple Ledges south and outside
of MPA

Poecilosclerida- MPA-03



201406244_T-17-49-19_030.jpg

IDENTIFIER: M.C. Diaz, S. Pomponi *

Thin encrusting, on scallop shell, smooth, bright orange; oscules: regularly distributed, abundant, oscular membranes: orange; the sponge might represent a Clionaidae, *Acarus* sp. or Microcionidae.

CLASS:

Demospongiae

ORDER:

Poecilosclerida

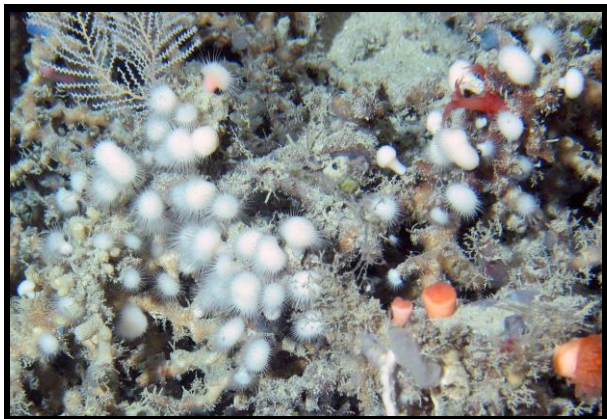
DEPTH:

52 m

LOCATION:

South Carolina, Inside Edisto MPA, 47 m Ridge

Abyssocladia sp. MPA-01^N



200508052007-2.jpg

5-VIII-05-2-007

IDENTIFIER: M.C. Diaz, S. Pomponi ***

Mushroom, thick stalked, overall size: 1 x 1 cm, stalk (5 mm wide); spiky, smooth stalk; tan; oscules: not visible.

CLASS:

Demospongiae

ORDER:

Poecilosclerida

FAMILY:

Cladorhizidae

DEPTH:

604 m

LOCATION:

Florida; Miami Terrace, Lophelia Mound, Base of Escarpment, E. Of Reed Site Bu2

***Abyssocladia* sp. MPA-01^N**



200508052007-Deck-cu.JPG

5-VIII-05-2-007

IDENTIFIER: M.C. Diaz, S. Pomponi ***

Mushroom, thick stalked, overall size: 1 x 1 cm, stalk (5 mm wide); spiky, smooth stalk; tan; oscules: not visible.

CLASS:

Demospongiae

ORDER:

Poecilosclerida

FAMILY:

Cladorhizidae

DEPTH:

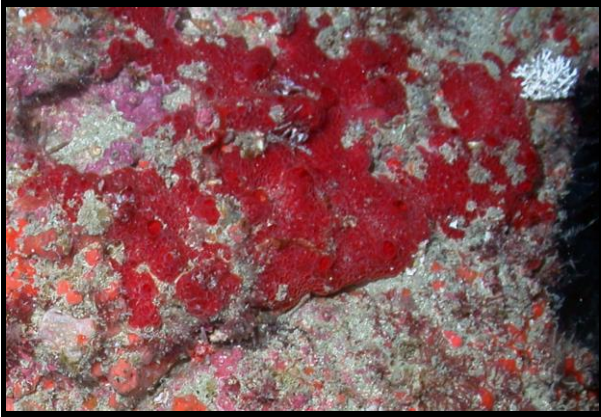
604 m

LOCATION:

Florida; Miami Terrace, Lophelia Mound, Base of Escarpment, E. Of Reed Site Bu2

Phorbas amaranthus

Duchassaing & Michelotti, 1864



201207074-T-15-52-21_Dive03_028.jpg

IDENTIFIER: M.C. Diaz, S. Pomponi *

Thin encrusting, elevated round papillae, encrusted; burgundy; oscules: round, 5-8 mm wide, oscular membranes: translucent red.

CLASS:

Demospongiae

ORDER:

Poecilosclerida

FAMILY:

Hymedesmiidae

DEPTH:

56 m

LOCATION:

Florida, North Florida MPA, inside MPA

Microcionidae MPA-01



201106071_T-14-57-39_9185a.jpg

IDENTIFIER: M.C. Diaz, S. Pomponi *

Massive/branching, dichotomous branches, smooth, translucent veil; orange/white; oscules: not visible.

CLASS:

Demospongiae

ORDER:

Poecilosclerida

FAMILY:

Microcionidae

DEPTH:

82 m

LOCATION:

Florida, Ft. Pierce, Oculina HAPC, Jeff's Reef

Microcionidae MPA-01



201106061_T-19-18-27_8429.jpg

IDENTIFIER: M.C. Diaz, S. Pomponi *

Bush, folded, covered with dermal veil, pitted; orange/brown; oscules: sparse.

CLASS:

Demospongiae

ORDER:

Poecilosclerida

FAMILY:

Microcionidae

DEPTH:

85 m

LOCATION:

Florida, Cape Canaveral, North Canaveral Oculina Mounds, Site 1, Reed Site DR14

Clathria (Clathria) foliacea

Topsent, 1889



201906171001_T-07-58-20_026.jpg

17-VI-19-1-001

IDENTIFIER: M.C. Diaz, S. Pomponi ***

Massive/bushy, lobate, overall size: 10 x 9 cm, lobes: 1-2 cm wide; smooth, microscopically hispid; red; oscules: on top of lobe(s), 5-10 mm wide.

CLASS:

Demospongiae

ORDER:

Poecilosclerida

FAMILY:

Microcionidae

DEPTH:

61 m

LOCATION:

Florida, North Florida MPA; NF-02; 55 m; ROV 19-26; UNCW 732

Clathria (Clathria) foliacea

Topsent, 1889



201906171001_Deck2.JPG

17-VI-19-1-001

IDENTIFIER: M.C. Diaz, S. Pomponi, J Reed ***

Massive/bushy, overall size: 10 x 9 cm; smooth, microscopically hispid; red.

CLASS:

Demospongiae

ORDER:

Poecilosclerida

FAMILY:

Microcionidae

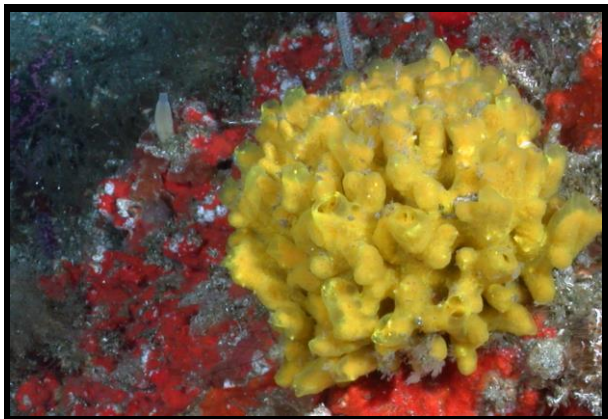
DEPTH:

61 m

LOCATION:

Florida, North Florida MPA; NF-02; 55 m; ROV 19-26; UNCW 732

Clathria (C.) sp. MPA-01^N



201106021_T-20-35-23_6260.tif

IDENTIFIER: M.C. Diaz, S. Pomponi **

Bushy, short lobate branches, porous, translucent veil; bright yellow; oscules: membranaceous, on top of lobe(s), most oscules are contracted.

CLASS:

Demospongiae

ORDER:

Poecilosclerida

FAMILY:

Microcionidae

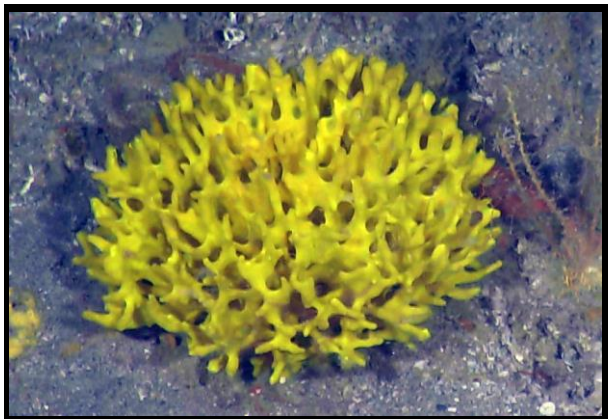
DEPTH:

64 m

LOCATION:

Florida, Jacksonville, North Florida
MPA Site, west ridge, A. David
Transect Site 1

Clathria (C.) sp. MPA-01^N



201906151001_T-07-21-38_013.jpg

15-VI-19-1-001

IDENTIFIER: M.C. Diaz, S. Pomponi ***

Bush, flat branches end in dichotomy, overall size: 7-8 cm, branches: 2-10 mm wide; microhispid, bright yellow; oscules: not visible, firm.

CLASS:

Demospongiae

ORDER:

Poecilosclerida

FAMILY:

Microcionidae

DEPTH:

66 m

LOCATION:

Georgia, Outside GA MPA; GA-
01; 60 m; ROV 19-20; UNCW
726

Clathria (C.) sp. MPA-01^N



201706243_T-12-45-36_034.jpg

15-VI-19-1-001

IDENTIFIER: M.C. Diaz, S. Pomponi ***

Bush, flat branches end in dichotomy, smooth to microhispid, bright yellow; oscules: not visible.

CLASS:

Demospongiae

ORDER:

Poecilosclerida

FAMILY:

Microcionidae

DEPTH:

57 m

LOCATION:

Florida, Outside North Florida MPA; West Ridge; 58 m; Target FL-3; ROV 17-05; UNCW 454

Clathria (C.) sp. MPA-01^N



201906151001_Deck1.JPG

15-VI-19-1-001

IDENTIFIER: M.C. Diaz, S. Pomponi ***

Bush, flat branches end in dichotomy, overall size: 7-8 cm, branches: 2-10 mm wide; microhispid, bright yellow; oscules: not visible, firm.

CLASS:

Demospongiae

ORDER:

Poecilosclerida

FAMILY:

Microcionidae

DEPTH:

66 m

LOCATION:

Georgia, Outside GA MPA; GA-01; 60 m; ROV 19-20; UNCW 726

***Sceptrintus cf. richardi*^N**

Topsent, 1898



201207152_T-09-05-42_Dive27_103.jpg

IDENTIFIER: M.C. Diaz, S. Pomponi, R. van Soest **

Massive, elliptical, overall size: 15 x 23.7 cm; irregular, encrusted; white; oscules: round, sparse, 3-4 mm wide.

CLASS:

Demospongiae

ORDER:

Poecilosclerida

FAMILY:

Podospongiidae

DEPTH:

166 m

LOCATION:

South Carolina, Northern S.C. MPA, south and outside of MPA

***Sceptrintus cf. richardi*^N**

Topsent, 1898



200405301011.jpg

30-V-04-1-011

IDENTIFIER: M.C. Diaz, S. Pomponi, R. van Soest ***

Massive/amorphous, rounded cauliflower appearance, corrugated; white/brown; oscules: sparse, 2-3 mm wide.

CLASS:

Demospongiae

ORDER:

Poecilosclerida

FAMILY:

Podospongiidae

DEPTH:

222 m

LOCATION:

Florida; Florida Keys, Pourtales Terrace, Alligator Bump Lithoherm #1, North Peak (=22-Viii-99-1)

Sceptrintus cf. richardi^N

Topsent, 1898



200405301011_Deck.jpg

30-V-04-1-011

IDENTIFIER: M.C. Diaz, S. Pomponi ***

Massive/amorphous, rounded cauliflower appearance, corrugated; white/brown; oscules: sparse, 2-3 mm wide.

CLASS:

Demospongiae

ORDER:

Poecilosclerida

FAMILY:

Podospongiidae

DEPTH:

222 m

LOCATION:

Florida; Florida Keys, Pourtales Terrace, Alligator Bump Lithoherm #1, North Peak (=22-Viii-99-1)

Sceptrintus cf. richardi^N

Topsent, 1898



200508081010_2.jpg

8-VIII-05-1-010

IDENTIFIER: M.C. Diaz, S. Pomponi, R. van Soest ***

Massive, rugose, tan; oscules: not visible, hard and crumbly.

CLASS:

Demospongiae

ORDER:

Poecilosclerida

FAMILY:

Podospongiidae

DEPTH:

233 m

LOCATION:

Florida; Florida Keys; Off Long Key; Pourtales Terrace, Tennessee Bioherm #1

Sceptrintus cf. richardi^N

Topsent, 1898



200508081010_Deck1.JPG

8-VIII-05-1-010

IDENTIFIER: M.C. Diaz, S. Pomponi, R. van Soest ***

Massive, rugose, tan with brownish tinges; oscules: not visible, hard and crumbly.

CLASS:

Demospongiae

ORDER:

Poecilosclerida

FAMILY:

Podospongiidae

DEPTH:

233 m

LOCATION:

Florida; Florida Keys; Off Long Key; Pourtales Terrace, Tennessee Bioherm #1

***Polymastia* sp. MPA-01**



200405231011_Deck.JPG

23-V-04-1-011

CLASS:

Demospongiae

ORDER:

Polymastiida

FAMILY:

Polymastiidae

DEPTH:

726 m

LOCATION:

Florida; ~50 Nm East of Cape Canaveral, Canaveral Pinnacles, Lophelia Pinnacle #129 (Near #Ts-8)

IDENTIFIER: M.C. Diaz, S. Pomponi ***

Massive/subspherical, digitate tapering projections, and thicker oscular tapering tubes; tan/pink; oscules: on top of tube(s), compressible; (no in situ image available)

Epipolasis cf. profunda^N

Diaz, van Soest & Pomponi, 1993



201906122001_T-12-30-56_032.jpg

12-VI-19-2-001

IDENTIFIER: J. Reed, M.C. Diaz, S. Pomponi ***

Massive/lobate, lobes (3.5-6.5 cm high and 2.5-3.5 cm wide); porous, hispid; yellow; oscules: round, on top of lobe(s).

CLASS:

Demospongiae

ORDER:

Suberitida

FAMILY:

Halichondriidae

DEPTH:

161 m

LOCATION:

South Carolina, Northern South Carolina MPA- Iceberg Scar; SC-06; 160 m; ROV 19-12; UNCW 718

Epipolasis cf. profunda^N

Diaz, van Soest & Pomponi, 1993



201906122001_Deck2b.jpg

12-VI-19-2-001

IDENTIFIER: J. Reed, M.C. Diaz, S. Pomponi ***

Massive/lobate, lobes (3.5-6.5 cm high and 2.5-3.5 cm wide); porous, hispid; yellow; oscules: round, on top of lobe(s).

CLASS:

Demospongiae

ORDER:

Suberitida

FAMILY:

Halichondriidae

DEPTH:

161 m

LOCATION:

South Carolina, Northern South Carolina MPA- Iceberg Scar; SC-06; 160 m; ROV 19-12; UNCW 718

***Epipolasis cf. profunda*^N**

Diaz, van Soest & Pomponi, 1993



201906122001_Deck1.JPG

12-VI-19-2-001

IDENTIFIER: J. Reed, M.C. Diaz, S. Pomponi ***

Massive/lobate, lobes (3.5-6.5 cm high and 2.5-3.5 cm wide); porous, hispid; yellow; oscules: round, on top of lobe(s).

CLASS:

Demospongiae

ORDER:

Suberitida

FAMILY:

Halichondriidae

DEPTH:

161 m

LOCATION:

South Carolina, Northern South Carolina MPA- Iceberg Scar; SC-06; 160 m; ROV 19-12; UNCW 718

Spongosorites ruetzleri

(van Soest & Stentoft, 1988)



200508151003_1.jpg

15-VIII-05-1-003

IDENTIFIER: M.C. Diaz, S. Pomponi ***

Massive, smooth, yellow; oscules: round, clumped to irregularly distributed.

CLASS:

Demospongiae

ORDER:

Suberitida

FAMILY:

Halichondriidae

DEPTH:

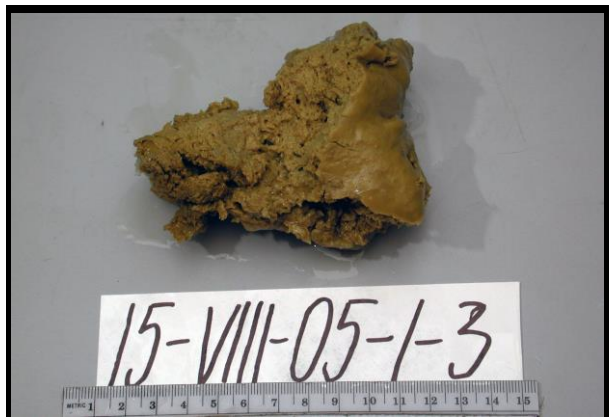
406 m

LOCATION:

Florida; Off Hollywood; Miami Terrace Escarpment, Reed Site Buó, East Face of W. Ridge

Spongosorites ruetzleri

(van Soest & Stentoft, 1988)



200508151003_Deck.JPG

15-VIII-05-1-003

IDENTIFIER: M.C. Diaz, S. Pomponi ***

Massive, smooth, yellow; oscules: round, clumped to irregularly distributed.

CLASS:

Demospongiae

ORDER:

Suberitida

FAMILY:

Halichondriidae

DEPTH:

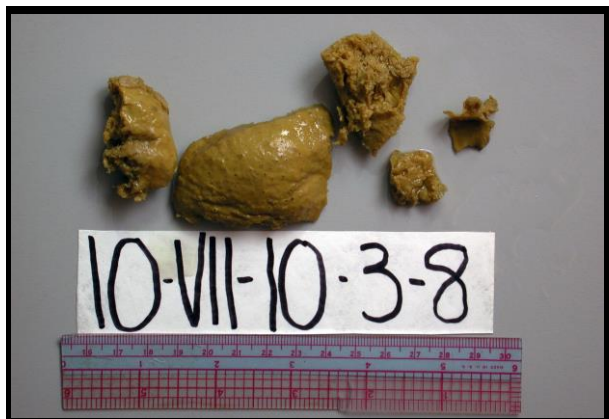
406 m

LOCATION:

Florida; Off Hollywood; Miami Terrace Escarpment, Reed Site Bu6, East Face of W. Ridge

Spongosorites ruetzleri

(van Soest & Stentoft, 1988)



201007103008_Deck.JPG

10-VII-10-3-008

IDENTIFIER: M.C. Diaz, S. Pomponi ***

Massive, smooth, brown/yellow; oscules: not visible, (no in situ image available)

CLASS:

Demospongiae

ORDER:

Suberitida

FAMILY:

Halichondriidae

DEPTH:

400 m

LOCATION:

Florida, Miami Terrace, Reef Site Bu-7, East Wall of West Ridge - New Site

Spongosorites siliquaria

van Soest & Stentoft, 1988



201406203_T-15-57-13.jpg

IDENTIFIER: M.C. Diaz, S. Pomponi *

Massive, overgrown, oscules: not visible.

CLASS:

Demospongiae

ORDER:

Suberitida

FAMILY:

Halichondriidae

DEPTH:

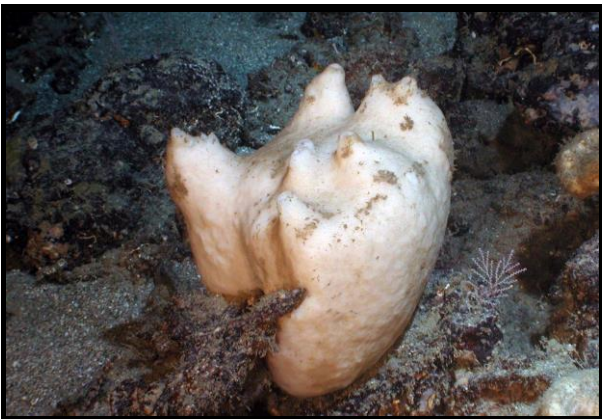
72 m

LOCATION:

South Carolina, Inside Northern South Carolina MPA, 75 m Slope

Topsentia pseudoporrecta

Diaz, van Soest & Pomponi, 1993



200208231007.jpg

23-VIII-02-1-007

IDENTIFIER: M.C. Diaz, S. Pomponi, R. van Soest ***

Massive/amorphous, smooth, tan; darker internally; oscules: oscular volcanoes, 4-10 mm wide.

CLASS:

Demospongiae

ORDER:

Suberitida

FAMILY:

Halichondriidae

DEPTH:

190 m

LOCATION:

South Carolina, ~85 Nm East of Charleston, SC; Charleston Lumps South; Phosphoritic Ridges

Topsentia pseudoporrecta

Diaz, van Soest & Pomponi, 1993



200208231007_Deck.jpg

23-VIII-02-1-007

CLASS:

Demospongiae

ORDER:

Suberitida

FAMILY:

Halichondriidae

DEPTH:

190 m

LOCATION:

South Carolina, ~85 Nm East of Charleston, SC; Charleston Lumps South; Phosphoritic Ridges

IDENTIFIER: M.C. Diaz, S. Pomponi, R. van Soest ***

Massive/amorphous, smooth, tan; darker internally; oscules: oscular volcanoes, 4-10 mm wide.

***Aptos* sp. MPA-01^N**



201805222_T-10-18-19_026.jpg

CLASS:

Demospongiae

ORDER:

Suberitida

FAMILY:

Suberitidae

DEPTH:

45 m

LOCATION:

South Carolina, Outside Northern South Carolina MPA; Ridge SC-6; 65 m

IDENTIFIER: M.C. Diaz, S. Pomponi **

Massive, subglobular, smooth to rugose, red/orange; oscules: not visible.

***Aptos* sp. MPA-01^N**



201406262_T-10-55-12_038.jpg

IDENTIFIER: M.C. Diaz, S. Pomponi **

Massive, subglobular, smooth to rugose, orange/yellow; oscules: not visible, hard.

CLASS:

Demospongiae

ORDER:

Suberitida

FAMILY:

Suberitidae

DEPTH:

55 m

LOCATION:

Florida, Inside Proposed
Fernandina MPA, 70 m Ridge

***Aptos* sp. MPA-01^N**



201906162001_T-16-18-42_011.jpg

16-VI-19-2-001

IDENTIFIER: J. Reed, M.C. Diaz, S. Pomponi ***

Massive/subspherical, yellow/red; oscules: on small mounds on top, 1.5-1.8 mm wide.

CLASS:

Demospongiae

ORDER:

Suberitida

FAMILY:

Suberitidae

DEPTH:

53 m

LOCATION:

Florida, Outside North Florida
MPA; 51 m; ROV 19-25; UNCW
731

Aptos sp. MPA-01^N



201906162001_Deck1.JPG

16-VI-19-2-001

IDENTIFIER: J. Reed, M.C. Diaz, S. Pomponi ***

Massive/subspherical, yellow/red; oscules: on small mounds on top, 1.5-1.8 mm wide.

CLASS:

Demospongiae

ORDER:

Suberitida

FAMILY:

Suberitidae

DEPTH:

53 m

LOCATION:

Florida, Outside North Florida MPA; 51 m; ROV 19-25; UNCW 731

Aptos sp. MPA-02



201207134_T-15-45-17_Dive21_027.jpg

IDENTIFIER: M.C. Diaz, S. Pomponi *

Massive, subglobular, smooth to rugose, orange/brown; oscules: abundant and flush with surface, 2-5 mm wide, oscular membranes: dark.

CLASS:

Demospongiae

ORDER:

Suberitida

FAMILY:

Suberitidae

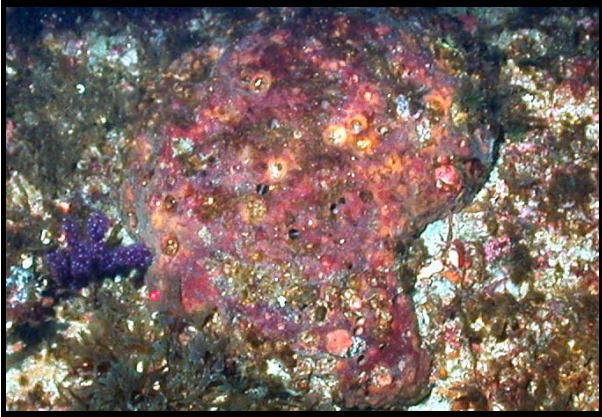
DEPTH:

65 m

LOCATION:

North Carolina, N.C. MPA, inside MPA near NW border

Tetractinellida- MPA-01



201207093_T-13-40-10_Dive07_112.jpg

IDENTIFIER: M.C. Diaz, S. Pomponi *

Massive/globular, rugose, fouled by algal turf; brown/red; oscules: round, oscular membranes: collar.

CLASS:

Demospongiae

ORDER:

Tetractinellida

DEPTH:

46 m

LOCATION:

South Carolina, Edisto MPA, inside MPA, north ridge

Asteropus niger

Hajdu & van Soest, 1992



201307022-T-09-36-34_078 .jpg

IDENTIFIER: M.C. Diaz, S. Pomponi *

Massive, apical depression, encrusted, with coral; black; oscules: abundant, on apical depression, 10-12 mm wide, oscular membranes: tan; *Filograna* sp. polychaete tubes around the sponge rim.

CLASS:

Demospongiae

ORDER:

Tetractinellida

FAMILY:

Ancorinidae

DEPTH:

58 m

LOCATION:

Florida, St. Augustine, Inside Proposed "St. Augustine Ext 2" MPA, 60 m ridge

***Stryphnus* sp. MPA-01^N**



200208222009.jpg

22-VIII-02-2-009

IDENTIFIER: M.C. Diaz, S. Pomponi, R. van Soest ***

Thick walled vase, undulating, smooth, tan; oscules: present, along the rim, hard.

CLASS:

Demospongiae

ORDER:

Tetractinellida

FAMILY:

Ancorinidae

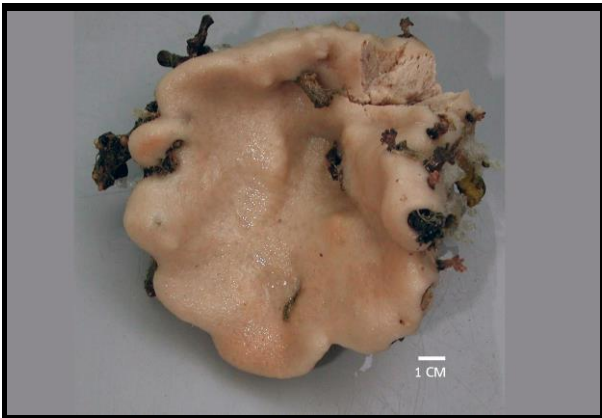
DEPTH:

641 m

LOCATION:

South Carolina, ~120 Nm S.E. of Charleston, SC; Stetson's Banks, Lophelia Coral Reef, Reed's Pinnacle

***Stryphnus* sp. MPA-01^N**



200208222009_Deck.jpg

22-VIII-02-2-009

IDENTIFIER: M.C. Diaz, S. Pomponi, R. van Soest ***

Thick walled vase, undulating, smooth, tan; oscules: present, along the rim, hard.

CLASS:

Demospongiae

ORDER:

Tetractinellida

FAMILY:

Ancorinidae

DEPTH:

641 m

LOCATION:

South Carolina, ~120 Nm S.E. of Charleston, SC; Stetson's Banks, Lophelia Coral Reef, Reed's Pinnacle

Leiodermatium lynceus

Schmidt, 1870



201406214-T-17-11-45_072 .jpg

IDENTIFIER: M.C. Diaz, S. Pomponi *

Convoluted fan, overall size: 30.1 x 31.6 cm; oscules: not visible, hard; open fans to tubes in clumps.

CLASS:

Demospongiae

ORDER:

Tetractinellida

FAMILY:

Azoricidae

DEPTH:

161 m

LOCATION:

South Carolina, Inside Northern South Carolina MPA, 165 m Iceberg Scar SW/NE

Leiodermatium lynceus

Schmidt, 1870



201207152_T-08-54-30_Dive27_083.jpg

IDENTIFIER: M.C. Diaz, S. Pomponi *

Convoluted fan, oscules: not visible, hard; forms tubes that grow in large clusters.

CLASS:

Demospongiae

ORDER:

Tetractinellida

FAMILY:

Azoricidae

DEPTH:

165 m

LOCATION:

South Carolina, Northern S.C. MPA, south and outside of MPA

Leiodermatium lynceus

Schmidt, 1870



200508151012_Deck.JPG

15-VIII-05-1-012

IDENTIFIER: M.C. Diaz, S. Pomponi ***

Plate, folded with central tube, smooth, brown/tan; wall 3-5 mm thick (no in situ image available)

CLASS:

Demospongiae

ORDER:

Tetractinellida

FAMILY:

Azoricidae

DEPTH:

380 m

LOCATION:

Florida; Off Hollywood; Miami Terrace Escarpment, Reed Site Bu6, East Face of W. Ridge

Leiodermatium lynceus

Schmidt, 1870



201007101008_Deck.jpg

10-VII-10-1-008

IDENTIFIER: M.C. Diaz, S. Pomponi ***

Fan/stalked, smooth, brown/tan; oscules: not visible, hard; wall 1-3 mm thick (no in situ image available)

CLASS:

Demospongiae

ORDER:

Tetractinellida

FAMILY:

Azoricidae

DEPTH:

364 m

LOCATION:

Florida, Miami Terrace, Reed Site-Bu-6

Leiodermatium lynceus

Schmidt, 1870



201906121005_T-09-31-18_116.jpg

12-VI-19-1-005

IDENTIFIER: M.C. Diaz, S. Pomponi ***

Convoluted fan, white; oscules: not visible, hard; forms tubes that grow in large clusters.

CLASS:

Demospongiae

ORDER:

Tetractinellida

FAMILY:

Azoricidae

DEPTH:

159 m

LOCATION:

South Carolina, Northern South Carolina MPA- Iceberg Scar; SC-8; 165 m; ROV 19-11; UNCW 717

Corallistes typus

Schmidt, 1870



201207153_T-10-48-02_Dive28_037.jpg

IDENTIFIER: M.C. Diaz, S. Pomponi ***

Cup, thick wall, overall size: 61.1 x 66.2 cm; red/brown; oscules: not visible.

CLASS:

Demospongiae

ORDER:

Tetractinellida

FAMILY:

Corallistidae

DEPTH:

163 m

LOCATION:

South Carolina, Northern S.C. MPA, south and outside of MPA

Corallistes typus

Schmidt, 1870



201207154_T-12-48-37_Dive29_024.jpg

IDENTIFIER: M.C. Diaz, S. Pomponi *

Cup, smooth, tan.

CLASS:

Demospongiae

ORDER:

Tetractinellida

FAMILY:

Corallistidae

DEPTH:

158 m

LOCATION:

South Carolina, Northern S.C.
MPA, inside MPA

Corallistes typus

Schmidt, 1870



200508081011_1.jpg

8-VIII-05-1-011

IDENTIFIER: M.C. Diaz, S. Pomponi ***

Cup, pedunculated, tan; oscules: not visible, hard; cup 5-11 cm in diameter, wall 1.5 cm thickness, peduncle 4 cm wide.

CLASS:

Demospongiae

ORDER:

Tetractinellida

FAMILY:

Corallistidae

DEPTH:

233 m

LOCATION:

Florida; Florida Keys; Off Long
Key; Pourtales Terrace, Tennessee
Bioherm #1

Corallistes typus

Schmidt, 1870



200508081011_Deck1.JPG

8-VIII-05-1-011

IDENTIFIER: M.C. Diaz, S. Pomponi ***

Cup, pedunculated, tan; oscules: not visible, hard; cup 5-11 cm in diameter, wall 1.5 cm thickness, peduncle 4 cm wide..

CLASS:

Demospongiae

ORDER:

Tetractinellida

FAMILY:

Corallistidae

DEPTH:

233 m

LOCATION:

Florida; Florida Keys; Off Long Key; Pourtales Terrace, Tennessee Bioherm #1

Corallistes cf. typus

Schmidt, 1870



201805212_T-14-40-00_140.jpg

IDENTIFIER: M.C. Diaz, S. Pomponi *

Thick fan, overall size: 28.8 x 53 cm; smooth, brown/tan.

CLASS:

Demospongiae

ORDER:

Tetractinellida

FAMILY:

Corallistidae

DEPTH:

161 m

LOCATION:

South Carolina, Outside Northern South Carolina MPA; Iceberg Scour SC-2; 165 m

Corallistes cf. typus

Schmidt, 1870



201207154_T-12-58-57_Dive29_049.jpg

IDENTIFIER: M.C. Diaz, S. Pomponi *

Thick fan, overall size: 9.1 x 22.9 cm; rugose, white/gray with red patches.

CLASS:

Demospongiae

ORDER:

Tetractinellida

FAMILY:

Corallistidae

DEPTH:

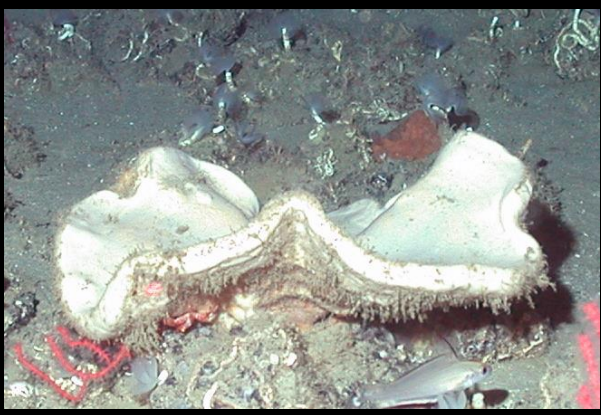
160 m

LOCATION:

South Carolina, Northern S.C. MPA, inside MPA

Corallistes cf. typus

Schmidt, 1870



201307102-T-09-44-47_113 .jpg

IDENTIFIER: M.C. Diaz, S. Pomponi *

Thick plate, undulating, Upper smooth, lower fouled, white; oscules: not visible, hard.

CLASS:

Demospongiae

ORDER:

Tetractinellida

FAMILY:

Corallistidae

DEPTH:

163 m

LOCATION:

South Carolina, Northern S. Carolina MPA, terrace with iceberg scour, 165 m

Geodiidae MPA-01



201805221_T-08-56-09_091.jpg

IDENTIFIER: M.C. Diaz, S. Pomponi *

Massive/subglobular, overall size: 44.1 x 48.4 cm; rugose, dark blue/gray; tan internally; oscules: abundant, various sizes, oscular membranes: thin and white.

CLASS:

Demospongiae

ORDER:

Tetractinellida

FAMILY:

Geodiidae

DEPTH:

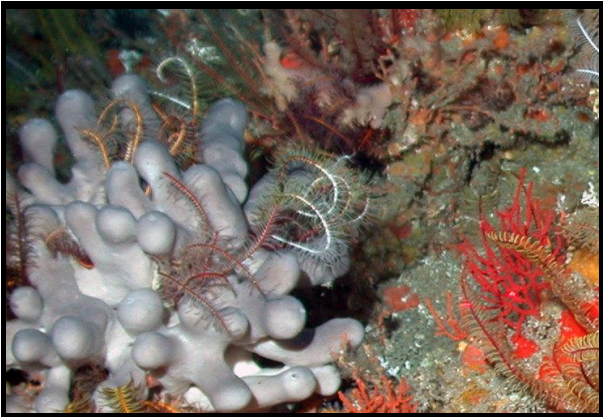
71 m

LOCATION:

South Carolina, Outside Northern South Carolina MPA; Ridge SC-5; 65 m

Erylus formosus

Sollas, 1886



201307083-T-10-52-13_034.jpg

IDENTIFIER: M.C. Diaz, S. Pomponi *

Stubby branches, clustered and stalked, overall size: 63.5 x 58.2 cm; smooth, gray/tan; oscules: sparse, top and side of branches, oscular membranes: whitish in color.

CLASS:

Demospongiae

ORDER:

Tetractinellida

FAMILY:

Geodiidae

DEPTH:

82 m

LOCATION:

North Carolina, Outside Proposed N Cape Lookout NC MPA, deep slope and scour valley, 110 m

Erylus formosus

Sollas, 1886



201307083-T-10-42-16_014 .jpg

IDENTIFIER: M.C. Diaz, S. Pomponi *

Branching, cluster of lobes, smooth, gray/tan; oscules: sparse, on upper side, oscular membranes: whitish in color.

CLASS:

Demospongiae

ORDER:

Tetractinellida

FAMILY:

Geodiidae

DEPTH:

90 m

LOCATION:

North Carolina, Outside Proposed N Cape Lookout NC MPA, deep slope and scour valley, 110 m

Erylus formosus

Sollas, 1886



201307083-T-10-41-32_012 .jpg

IDENTIFIER: M.C. Diaz, S. Pomponi *

Amorphous to branching, repent branches, smooth, gray/tan; oscules: sparse, on upper side, oscular membranes: whitish in color.

CLASS:

Demospongiae

ORDER:

Tetractinellida

FAMILY:

Geodiidae

DEPTH:

86 m

LOCATION:

North Carolina, Outside Proposed N Cape Lookout NC MPA, deep slope and scour valley, 110 m

Geodia gibberosa

Lamarck, 1815



201106072_T-20-13-40_9889.jpg

IDENTIFIER: M.C. Diaz, S. Pomponi *

Massive/amorphous, overall size: 16.1 x 17.4 cm; convoluted, yellow/red; oscules: apical sieve plate, sieve plates are red.

CLASS:

Demospongiae

ORDER:

Tetractinellida

FAMILY:

Geodiidae

DEPTH:

70 m

LOCATION:

Florida, Oculina HAPC, Chapman's Reef West

Geodia gibberosa

Lamarck, 1815



201106072_T-21-14-21_0038.jpg

IDENTIFIER: R. van Soest, M.C. Diaz, S. Pomponi *

Cluster of thick cylinders, porous, white; oscules: apical sieve plate, dark brown, surface heavily overgrown.

CLASS:

Demospongiae

ORDER:

Tetractinellida

FAMILY:

Geodiidae

DEPTH:

72 m

LOCATION:

Florida, Oculina HAPC, Chapman's Reef West

Geodia gibberosa

Lamarck, 1815



201106071_T-16-42-38_9608.jpg

IDENTIFIER: M.C. Diaz, S. Pomponi *

Globular to cylindrical, clustered, hairy appearance around sieve plate, brown/tan; oscules: apical sieve plate, dark brown.

CLASS:

Demospongiae

ORDER:

Tetractinellida

FAMILY:

Geodiidae

DEPTH:

71 m

LOCATION:

Florida, Ft. Pierce, Oculina HAPC, Jeff's Reef

Geodia gibberosa

Lamarck, 1815



201106071_T-14-57-39_9185b.jpg

IDENTIFIER: M.C. Diaz, S. Pomponi *

Globular to cylindrical, clustered, yellow; oscules: apical sieve plate with hairy rim, dark brown in color.

CLASS:

Demospongiae

ORDER:

Tetractinellida

FAMILY:

Geodiidae

DEPTH:

82 m

LOCATION:

Florida, Ft. Pierce, Oculina HAPC, Jeff's Reef

Geodia gibberosa

Lamarck, 1815



201106071_T-15-43-16_9381.jpg

IDENTIFIER: M.C. Diaz, S. Pomponi *

Cylinder, clustered, overall size: 11.8 x 13.6 cm; smooth, brown/tan; oscules: apical sieve plate, dark brown, fringe around sieve plate, possibly due to projecting spicules collecting sediment and debris.

CLASS:

Demospongiae

ORDER:

Tetractinellida

FAMILY:

Geodiidae

DEPTH:

72 m

LOCATION:

Florida, Ft. Pierce, Oculina HAPC, Jeff's Reef

Geodia aff. megastrella

Carter, 1876



200508031008_1.jpg

3-VIII-05-1-008

IDENTIFIER: P. Cárdenas ***

Pear-shaped, smooth, with rows of spicules projecting; brown; oscules: apical.

CLASS:

Demospongiae

ORDER:

Tetractinellida

FAMILY:

Geodiidae

DEPTH:

304 m

LOCATION:

Florida; 13 nm East of Pompano; Miami Terrace Escarpment; 1000' S. Of Reed Site Bu5, E. Ridge

Geodia aff. megastrella

Carter, 1876



200508031008_Deck.jpg

3-VIII-05-1-008

IDENTIFIER: P. Cárdenas ***

Pear-shaped, smooth, with rows of spicules projecting; brown; oscules: apical, 4.5-5 cm wide.

CLASS:

Demospongiae

ORDER:

Tetractinellida

FAMILY:

Geodiidae

DEPTH:

304 m

LOCATION:

Florida; 13 nm East of Pompano; Miami Terrace Escarpment; 1000' S. Of Reed Site Bu5, E. Ridge

Geodia cf. neptuni

(Sollas, 1886)



201207112_T-08-25-02_Dive12_044.jpg

IDENTIFIER: M.C. Diaz, S. Pomponi *

Vase, thick wall, rugose, brown/red; oscules: not visible, hard.

CLASS:

Demospongiae

ORDER:

Tetractinellida

FAMILY:

Geodiidae

DEPTH:

45 m

LOCATION:

South Carolina, Edisto MPA, ridge north and outside MPA

***Geodia* sp. MPA-01**



201106091_T-19-08-27_0281.jpg

IDENTIFIER: M.C. Diaz, S. Pomponi *

Spherical, overall size: 16.3 x 18.6 cm; smooth, tan; oscules: sparse.

CLASS:

Demospongiae

ORDER:

Tetractinellida

FAMILY:

Geodiidae

DEPTH:

345 m

LOCATION:

Florida, Deep Coral HAPC, SW Miami Terrace, Near Sonar WP #18

***Geodia* sp. MPA-02**



201207152_T-08-27-17_Dive27_033.jpg

IDENTIFIER: P. Cárdenas *

Spherical, 37.6 cm max diam.; hispid, hairy; tan/gray; oscules: abundant, on central, orange, concave area, sediment trapped by spicules. Holothurians are associated with the surface

CLASS:

Demospongiae

ORDER:

Tetractinellida

FAMILY:

Geodiidae

DEPTH:

167 m

LOCATION:

South Carolina, Northern S.C. MPA, south and outside of MPA

***Geodia* sp. MPA-03**



201307045-T-16-48-20_102 .jpg

IDENTIFIER: M.C. Diaz, S. Pomponi *

Massive/roundish, hollow, smooth to rugose, brown/tan; tan internally; oscules: on central cavity.

CLASS:

Demospongiae

ORDER:

Tetractinellida

FAMILY:

Geodiidae

DEPTH:

47 m

LOCATION:

South Carolina, Inside Edisto MPA (and proposed Edisto Reconfig 3), 65 m NE-SW 3 mi ridge

Penares mastoideus

(Schmidt, 1880)



200208291010 Deck .JPG

29-VIII-02-1-010

IDENTIFIER: M.C. Diaz, S. Pomponi ***

Massive, cluster of lobes, smooth, tan; oscules: on top of lobe(s), 1-2 mm wide, (no in situ image available)

CLASS:

Demospongiae

ORDER:

Tetractinellida

FAMILY:

Geodiidae

DEPTH:

554 m

LOCATION:

Georgia, ~90 Nm East of Jacksonville, Florida; Jacksonville Lithoherm Pinnacles, Pinnacle 1 Peak 6

Penares sp. MPA-01^N



201906121007_T-09-32-36_119.jpg

12-VI-19-1-007

IDENTIFIER: J. Reed, M.C. Diaz, S. Pomponi ***

Massive/flabellate, irregularly folded, 1-4 cm thick; oscules: few small oscular projections, 2 mm wide.

CLASS:

Demospongiae

ORDER:

Tetractinellida

FAMILY:

Geodiidae

DEPTH:

159 m

LOCATION:

South Carolina, Northern South Carolina MPA- Iceberg Scar; SC-8; 165 m; ROV 19-11; UNCW 717

Penares sp. MPA-01^N



201906121007_Deck2.JPG

12-VI-19-1-007

IDENTIFIER: J. Reed, M.C. Diaz, S. Pomponi ***

Massive/flabellate, irregularly folded, 1-4 cm thick; oscules: few small oscular projections, 2 mm wide.

CLASS:

Demospongiae

ORDER:

Tetractinellida

FAMILY:

Geodiidae

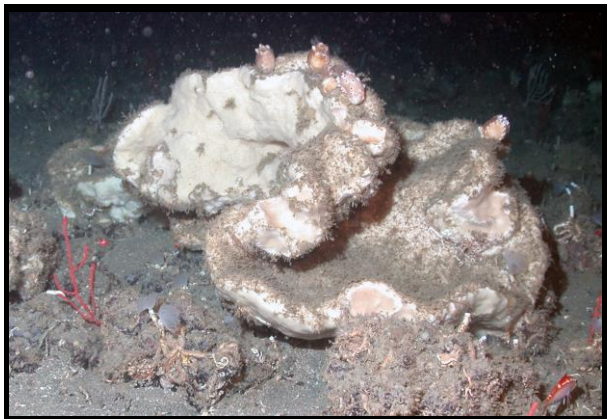
DEPTH:

159 m

LOCATION:

South Carolina, Northern South Carolina MPA- Iceberg Scar; SC-8; 165 m; ROV 19-11; UNCW 717

Penares sp. MPA-02



201207152_T-09-23-57_Dive27_137.jpg

IDENTIFIER: M.C. Diaz, S. Pomponi, R. van Soest *

Massive/flabellate, overall size: 38 x 67.1 cm; smooth, encrusted; white; oscules: not visible.

CLASS:

Demospongiae

ORDER:

Tetractinellida

FAMILY:

Geodiidae

DEPTH:

169 m

LOCATION:

South Carolina, Northern S.C.
MPA, south and outside of MPA

Pachastrellidae MPA-01



201106091_T-19-50-05_0443.jpg

IDENTIFIER: M.C. Diaz, S. Pomponi *

Fan, dark edge/rim due to sediment trapped by spicules, overall size: 15.7 x 39.8 cm; porous, white; oscules: pores, may be oscules or ostia, abundant small apertures (1 mm wide), may be incurrent or excurrent in function.

CLASS:

Demospongiae

ORDER:

Tetractinellida

FAMILY:

Pachastrellidae

DEPTH:

354 m

LOCATION:

Florida, Deep Coral HAPC, SW
Miami Terrace, Near Sonar WP
#18

Pachastrellidae MPA-01



201106091_T-19-08-03_0278.jpg

IDENTIFIER: M.C. Diaz, S. Pomponi, R. van Soest *

Fan, fringe with detritus, overall size: 26.2 x 38.1 cm; smooth, white; abundant small apertures (3 mm wide), may be incurrent or excurrent in function.

CLASS:

Demospongiae

ORDER:

Tetractinellida

FAMILY:

Pachastrellidae

DEPTH:

345 m

LOCATION:

Florida, Deep Coral HAPC, SW Miami Terrace, Near Sonar WP #18

Characella aspera

Sollas, 1886



200508082007_1.jpg

8-VIII-05-2-007

IDENTIFIER: M.C. Diaz, S. Pomponi ***

Cup, with shallow dip, undulating outer wall, smooth inside cup; tan; oscules: present, along the rim.

CLASS:

Demospongiae

ORDER:

Tetractinellida

FAMILY:

Pachastrellidae

DEPTH:

597 m

LOCATION:

Florida; Florida Keys; Pourtales Terrace, Marathon Sinkhole

Characella aspera

Sollas, 1886



200508082007_Deck.jpg

8-VIII-05-2-007

IDENTIFIER: M.C. Diaz, S. Pomponi ***

Cup, with shallow dip, undulating outer wall, smooth inside cup; tan; oscules: not visible.

CLASS:

Demospongiae

ORDER:

Tetractinellida

FAMILY:

Pachastrellidae

DEPTH:

597 m

LOCATION:

Florida; Florida Keys; Pourtales Terrace, Marathon Sinkhole

Characella sp. MPA-01^N



200504142007_2.jpg

14-IV-05-2-007

IDENTIFIER: M.C. Diaz, S. Pomponi ***

Tube(s), 24 cm high, 3-6 cm wide; rugose, white/gray with red patches; oscules: on top of tube(s), the fan to the right is likely a Corallistidae.

CLASS:

Demospongiae

ORDER:

Tetractinellida

FAMILY:

Pachastrellidae

DEPTH:

396 m

LOCATION:

Florida; East of Fort Lauderdale, Miami Terrace Escarpment, Reed Site Bu-6

Characella sp. MPA-01^N



200504142007_Deck.jpg

14-IV-05-2-007

IDENTIFIER: M.C. Diaz, S. Pomponi ***

Tube(s), 24 cm high, 3-6 cm wide; rugose, white/gray with red patches; oscules: on top of tube(s), epibionts are likely hydroids.

CLASS:

Demospongiae

ORDER:

Tetractinellida

FAMILY:

Pachastrellidae

DEPTH:

396 m

LOCATION:

Florida; East of Fort Lauderdale, Miami Terrace Escarpment, Reed Site Bu-6

Characella sp. MPA-02^N



201106051_T-17-33-54_7545.jpg

IDENTIFIER: M.C. Diaz, S. Pomponi **

Massive with clustered tubes, overall size: 49.5 x 72.8 cm; nodular surface, tan; oscules: on top of tube(s),

The identification of this species would require a sample to compare spicules

CLASS:

Demospongiae

ORDER:

Tetractinellida

FAMILY:

Pachastrellidae

DEPTH:

78 m

LOCATION:

Florida, Daytona Oculina Pinnacles, Site 1-- Reed's Reef

Characella sp. MPA-02^N



200504142011_3.jpg

14-IV-05-2-011

IDENTIFIER: M.C. Diaz, S. Pomponi ***

Short knobby branches, smooth, tan; oscules: sparse, top of branches.

CLASS:

Demospongiae

ORDER:

Tetractinellida

FAMILY:

Pachastrellidae

DEPTH:

358 m

LOCATION:

Florida; East of Fort Lauderdale, Miami Terrace Escarpment, Reed Site Bu-6

Characella sp. MPA-02^N



200504142011_Deck.jpg

14-IV-05-2-011

IDENTIFIER: M.C. Diaz, S. Pomponi ***

Short knobby branches, 2-8 cm high, 2-6 cm wide; smooth, tan; oscules: sparse, top of branches, 1-2 mm wide.

CLASS:

Demospongiae

ORDER:

Tetractinellida

FAMILY:

Pachastrellidae

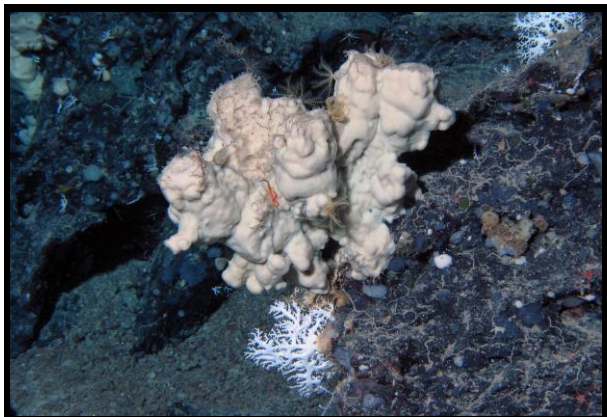
DEPTH:

358 m

LOCATION:

Florida; East of Fort Lauderdale, Miami Terrace Escarpment, Reed Site Bu-6

Characella sp. MPA-02^N



200508151010_1.jpg

15-VIII-05-1-010

IDENTIFIER: M.C. Diaz, S. Pomponi ***

Short knobby cylinders, irregular, tan; oscules: not visible.

CLASS:

Demospongiae

ORDER:

Tetractinellida

FAMILY:

Pachastrellidae

DEPTH:

384 m

LOCATION:

Florida; Off Hollywood; Miami Terrace Escarpment, Reed Site Buó, East Face of W. Ridge

Characella sp. MPA-02^N



200508151010_Deck.JPG

15-VIII-05-1-010

IDENTIFIER: M.C. Diaz, S. Pomponi ***

Short knobby cylinders, irregular, tan; oscules: not visible.

CLASS:

Demospongiae

ORDER:

Tetractinellida

FAMILY:

Pachastrellidae

DEPTH:

384 m

LOCATION:

Florida; Off Hollywood; Miami Terrace Escarpment, Reed Site Buó, East Face of W. Ridge

Characella sp. MPA-03^N



200508151014_2.jpg

15-VIII-05-1-014

IDENTIFIER: M.C. Diaz, S. Pomponi ***

Massive/branching, erect or repent branches, smooth, bumpy; white/gray with red patches; oscules: not visible.

CLASS:

Demospongiae

ORDER:

Tetractinellida

FAMILY:

Pachastrellidae

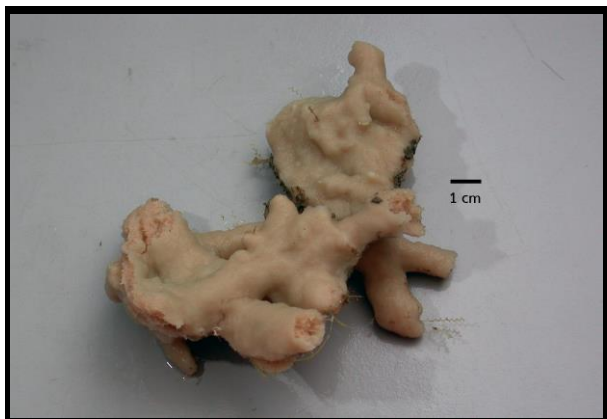
DEPTH:

351 m

LOCATION:

Florida; Off Hollywood; Miami Terrace Escarpment, Reed Site Buó, East Face of W. Ridge

Characella sp. MPA-03^N



200508151014_Deck.JPG

15-VIII-05-1-014

IDENTIFIER: M.C. Diaz, S. Pomponi **

Massive/branching, erect or repent branches, smooth, bumpy; white/gray with red patches; oscules: not visible.

CLASS:

Demospongiae

ORDER:

Tetractinellida

FAMILY:

Pachastrellidae

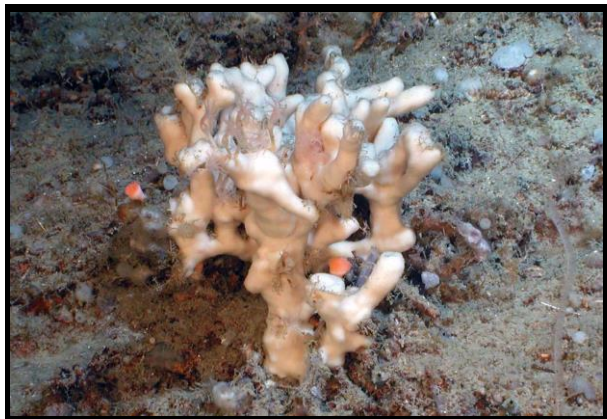
DEPTH:

351 m

LOCATION:

Florida; Off Hollywood; Miami Terrace Escarpment, Reed Site Buó, East Face of W. Ridge

Characella sp. MPA-04^N



200208222005.jpg

22-VIII-02-2-005

IDENTIFIER: M.C. Diaz, S. Pomponi ***

Short lobes, clumped, smooth, tan; oscules: on top of lobe(s), one per lobe, 2-4 mm wide.

CLASS:

Demospongiae

ORDER:

Tetractinellida

FAMILY:

Pachastrellidae

DEPTH:

647 m

LOCATION:

South Carolina, ~120 Nm S.E. of Charleston, SC; Stetson's Banks, Lophelia Coral Reef, Reed's Pinnacle

Characella sp. MPA-04^N



200208222005_Deck.jpg

22-VIII-02-2-005

IDENTIFIER: M.C. Diaz, S. Pomponi ***

Short lobes, clumped, smooth, tan; oscules: on top of lobe(s), one per lobe, 2-4 mm wide.

CLASS:

Demospongiae

ORDER:

Tetractinellida

FAMILY:

Pachastrellidae

DEPTH:

647 m

LOCATION:

South Carolina, ~120 Nm S.E. of Charleston, SC; Stetson's Banks, Lophelia Coral Reef, Reed's Pinnacle

Aciculites cribrophora

(Schmidt, 1880)



200208242002.jpg

24-VIII-02-2-002

IDENTIFIER: M.C. Diaz, S. Pomponi ***

Stump, narrower base, pore bearing papillae on the sides, smooth between papillae; brown; oscules: on top.

CLASS:

Demospongiae

ORDER:

Tetractinellida

FAMILY:

Scleritodermidae

DEPTH:

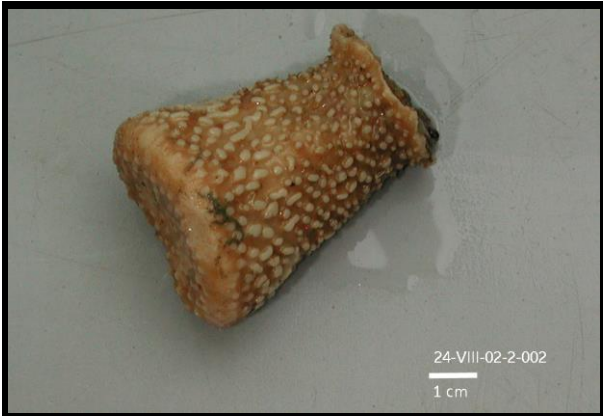
198 m

LOCATION:

South Carolina, ~85 Nm East of Charleston, SC; Charleston Lumps North, Phosphoritic Ridges

Aciculites cribrophora

(Schmidt, 1880)



200208242002_Deck1.jpg

24-VIII-02-2-002

IDENTIFIER: M.C. Diaz, S. Pomponi ***

Stump, narrower base, pore bearing papillae on the sides, smooth between papillae; brown; oscules: on top.

CLASS:

Demospongiae

ORDER:

Tetractinellida

FAMILY:

Scleritodermidae

DEPTH:

198 m

LOCATION:

South Carolina, ~85 Nm East of Charleston, SC; Charleston Lumps North, Phosphoritic Ridges

Cinachyrella kuekenthali

(Uliczka, 1929)



201406233_T-16-57-20.jpg

IDENTIFIER: M.C. Diaz, S. Pomponi *

Spherical, covered with porocalices, partly fouled by turf; yellow; oscules: not visible.

CLASS:

Demospongiae

ORDER:

Tetractinellida

FAMILY:

Tetillidae

DEPTH:

74 m

LOCATION:

North Carolina, Inside Proposed South Cape Lookout NC, Edge of 104 m Ravine

Theonella wrightae

Pisera & Pomponi, 2015



200508081008_1.jpg

8-VIII-05-1-008

IDENTIFIER: M.C. Diaz, S. Pomponi ***

Erect branching, slightly deformed, 14 cm x 1-2 cm wide; slightly rugose, red/orange; oscules: not visible.

CLASS:

Demospongiae

ORDER:

Tetractinellida

FAMILY:

Theonellidae

DEPTH:

260 m

LOCATION:

Florida; Florida Keys; Off Long Key; Pourtales Terrace, Tennessee Bioherm #1

Theonella wrightae

Pisera & Pomponi, 2015



200508081008_Deck1.JPG

8-VIII-05-1-008

IDENTIFIER: M.C. Diaz, S. Pomponi ***

Erect branching, slightly deformed, 14 cm x 1-2 cm wide; slightly rugose, red/orange; oscules: not visible.

CLASS:

Demospongiae

ORDER:

Tetractinellida

FAMILY:

Theonellidae

DEPTH:

260 m

LOCATION:

Florida; Florida Keys; Off Long Key; Pourtales Terrace, Tennessee Bioherm #1

Poecillastra aff. *Compressa*^N

(Bowerbank, 1866)



200508032006_2.jpg

3-VIII-05-2-006

IDENTIFIER: M.C. Diaz, S. Pomponi, R. van Soest ***

Fan, rugose, irregular; tan/white; oscules: not visible.

CLASS:

Demospongiae

ORDER:

Tetractinellida

FAMILY:

Vulcanellidae

DEPTH:

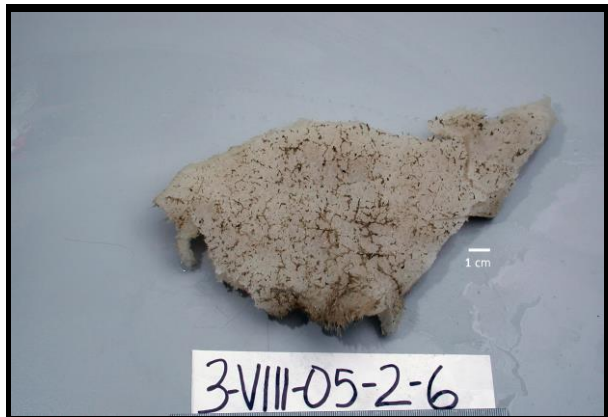
282 m

LOCATION:

Florida; ~13 nm E. of Pompano; Miami Terrace Escarp., Reed-Bu5, E. Ridge

Poecillastra aff. Compressa^N

(Bowerbank, 1866)



200508032006_Deck.jpg

3-VIII-05-2-006

IDENTIFIER: M.C. Diaz, S. Pomponi ***

Fan, rugose, irregular; tan/white; oscules: not visible.

CLASS:

Demospongiae

ORDER:

Tetractinellida

FAMILY:

Vulcanellidae

DEPTH:

282 m

LOCATION:

Florida; ~13 nm E. of Pompano;
Miami Terrace Escarp., Reed-Bu5,
E. Ridge

Poecillastra aff. Compressa^N

(Bowerbank, 1866)



200508151015_1.jpg

15-VIII-05-1-015

IDENTIFIER: M.C. Diaz, S. Pomponi ***

Fan, 4 mm thick; smooth, white internally; oscules: abundant, both sides, 2 mm wide, fragile.

CLASS:

Demospongiae

ORDER:

Tetractinellida

FAMILY:

Vulcanellidae

DEPTH:

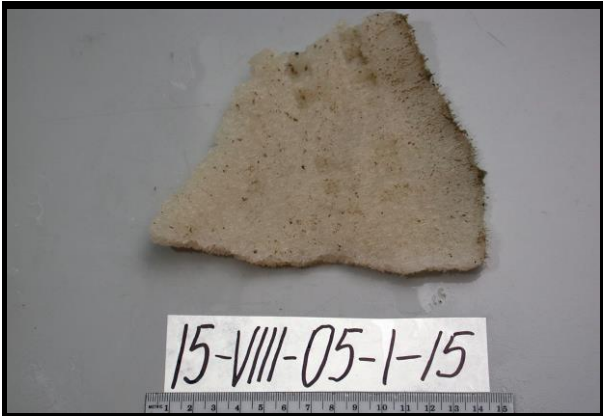
349 m

LOCATION:

Florida; Off Hollywood; Miami
Terrace Escarpment, Reed Site
Bu6, East Face of W. Ridge

Poecillastra aff. *Compressa*^N

(Bowerbank, 1866)



200508151015_Deck.JPG

15-VIII-05-1-015

IDENTIFIER: M.C. Diaz, S. Pomponi ***

Fan, 4 mm thick; smooth, white internally; oscules: abundant, both sides, 2 mm wide, fragile.

CLASS:

Demospongiae

ORDER:

Tetractinellida

FAMILY:

Vulcanellidae

DEPTH:

349 m

LOCATION:

Florida; Off Hollywood; Miami
Terrace Escarpment, Reed Site
Bu6, East Face of W. Ridge

Aiolochoiria crassa

(Hyatt, 1875)



201307083-T-10-52-13_034 A .jpg

IDENTIFIER: M.C. Diaz, S. Pomponi *

Massive/lobate, overall size: 6.2 x 11 cm; bumpy, yellow/purple; oscules: on top of lobe(s), 3.6-4.9 mm wide.

CLASS:

Demospongiae

ORDER:

Verongiida

FAMILY:

Aplysinidae

DEPTH:

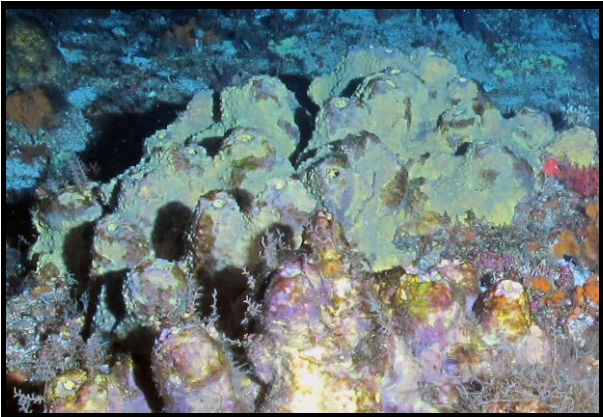
82 m

LOCATION:

North Carolina, Outside Proposed N Cape Lookout NC MPA, deep slope and scour valley, 110 m

Aiolochoiria crassa

(Hyatt, 1875)



201406233_T-16-42-03_002.jpg

IDENTIFIER: M.C. Diaz, S. Pomponi *

Massive/lobate, widespread base, conulose, conules irregularly distributed; gray/yellow/pink; oscules: on top of lobe(s), oscular membranes: collar.

CLASS:

Demospongiae

ORDER:

Verongiida

FAMILY:

Aplysinidae

DEPTH:

76 m

LOCATION:

North Carolina, Inside Proposed South Cape Lookout NC, Edge of 104 m Ravine

Aiolochoia crassa

(Hyatt, 1875)



201307054-T-14-44-50_021 .jpg

IDENTIFIER: M.C. Diaz, S. Pomponi *

Cluster of lobes, overall size: 29.7 x 36.6 cm; round conules, purple; rim purple membrane.

CLASS:

Demospongiae

ORDER:

Verongiida

FAMILY:

Aplysinidae

DEPTH:

54 m

LOCATION:

South Carolina, Proposed Charleston Shelf MPA, N and E slopes of Terrace, 52 m

Aiolochoia crassa

(Hyatt, 1875)



201307042-T-08-28-46_025 A .jpg

IDENTIFIER: M.C. Diaz, S. Pomponi *

Cluster of lobes, overall size: 23.7 cm max; bumpy, gray/pink; oscules: on top of lobe(s), 7-11 mm wide, oscular membranes: dark.

CLASS:

Demospongiae

ORDER:

Verongiida

FAMILY:

Aplysinidae

DEPTH:

52 m

LOCATION:

South Carolina, Inside Proposed Edisto S Ext MPA, 53 m NE-SW Ridge

Aiolochoira crassa

(Hyatt, 1875)



201207112_T-08-43-54_Dive12_067.jpg

IDENTIFIER: M.C. Diaz, S. Pomponi *

Massive/lobate, overall size: 16.9 x 22.3 cm; round conules, regularly distributed; yellow/gray; oscules: sparse, clumped, oscular membranes: yellow; spherical sponge in upper left may be a Tethyidae.

CLASS:

Demospongiae

ORDER:

Verongiida

FAMILY:

Aplysinidae

DEPTH:

46 m

LOCATION:

South Carolina, Edisto MPA, ridge north and outside MPA

Aplysina cf. cauliformis

(Carter, 1882)



201406251_T-09-32-33_117.jpg

IDENTIFIER: M.C. Diaz, S. Pomponi *

Branching, ramose, red with white patches; oscules: present, along branches, oscular membranes: thin and white.

CLASS:

Demospongiae

ORDER:

Verongiida

FAMILY:

Aplysinidae

DEPTH:

50 m

LOCATION:

South Carolina, Inside Edisto MPA, Large 48 m Plateau

Aplysina cf. cauliformis

(Carter, 1882)



201207093_T-15-14-03_Dive07_200a.jpg

IDENTIFIER: M.C. Diaz, S. Pomponi *

Branching, overall size: 8.6 cm; purple; white internally; oscules: present, 1.4-3.6 mm wide.

CLASS:

Demospongiae

ORDER:

Verongiida

FAMILY:

Aplysinidae

DEPTH:

48 m

LOCATION:

South Carolina, Edisto MPA, inside MPA, north ridge

Aplysina sp. MPA-01



201207103_T-12-27-18_Dive10_023.jpg

IDENTIFIER: M.C. Diaz, S. Pomponi *

Massive/lobate, overall size: 13 x 24.4 cm; rugose, red/purple; white internally; oscules: on top of lobe(s), 8-20 mm wide, oscular membranes: thin and white.

CLASS:

Demospongiae

ORDER:

Verongiida

FAMILY:

Aplysinidae

DEPTH:

52 m

LOCATION:

South Carolina, Edisto MPA, ridge southwest and outside MPA

***Aplysina* sp. MPA-01**



201207133_T-14-19-35_Dive20_070.jpg

IDENTIFIER: M.C. Diaz, S. Pomponi *

Cluster of hollow tubes, (5-10 cm wide, 6-19 cm high), overall size: 23 x 47 cm; red/purple; oscules: on top of tube(s), 7-26 mm wide, oscular membranes: thin and white.

CLASS:

Demospongiae

ORDER:

Verongiida

FAMILY:

Aplysinidae

DEPTH:

62 m

LOCATION:

North Carolina, N.C. MPA, inside and outside near border of MPA

***Aplysina* sp. MPA-02**



201207145_T-15-32-25_Dive26_058.jpg

IDENTIFIER: M.C. Diaz, S. Pomponi *

Tube(s), cluster of tubes, overall size: 19.8 x 11.1 cm; rugose, oscules: on top of tube(s), 9-25 mm wide, oscular membranes: not visible.

CLASS:

Demospongiae

ORDER:

Verongiida

FAMILY:

Aplysinidae

DEPTH:

68 m

LOCATION:

South Carolina, Northern S.C. MPA, inside MPA

***Aplysina* sp. MPA-02**



201207133_T-14-18-57_Dive20_069.jpg

IDENTIFIER: M.C. Diaz, S. Pomponi *

Tube(s), cluster of tubes, overall size: 39.1 x 36.7 cm; rugose, white; oscules: apical, oscular membranes: thin translucent.

CLASS:

Demospongiae

ORDER:

Verongiida

FAMILY:

Aplysinidae

DEPTH:

63 m

LOCATION:

North Carolina, N.C. MPA, inside and outside near border of MPA

***Aplysina* sp. MPA-03**



201207072-T-09-56-29_Dive01_024.jpg

IDENTIFIER: M.C. Diaz, S. Pomponi *

Short tubes with rod like branches, (1.7-4 cm wide, 7-11 cm high), overall size: 28.2 x 24.7 cm; smooth, burgundy; oscules: on top of tube(s), along branches.

CLASS:

Demospongiae

ORDER:

Verongiida

FAMILY:

Aplysinidae

DEPTH:

54 m

LOCATION:

Florida, North Florida MPA, inside MPA

***Aplysina* sp. MPA-03**



201307042-T-08-48-20_060 .jpg

IDENTIFIER: M.C. Diaz, S. Pomponi *

Short tubes with rod like branches, (1.2-2.8 cm wide, 3.4-17.6 cm high), overall size: 28.5 x 14.4 cm; microconulose, pink; white internally; oscules: on top of lobe(s).

CLASS:

Demospongiae

ORDER:

Verongiida

FAMILY:

Aplysinidae

DEPTH:

53 m

LOCATION:

South Carolina, Inside Proposed Edisto S Ext MPA, 53 m NE-SW Ridge

***Aplysina* sp. MPA-04**



201606212_T-13-00-06_148.jpg

IDENTIFIER: M.C. Diaz, S. Pomponi *

Cluster of hollow tubes, smooth, bright yellow; oscules: apical.

CLASS:

Demospongiae

ORDER:

Verongiida

FAMILY:

Aplysinidae

DEPTH:

70 m

LOCATION:

Florida, Oculina OECA, moderate relief live Oculina mounds, 75 m

Ianthellidae MPA-01



201307073-T-11-10-22_054 .jpg

IDENTIFIER: M.C. Diaz, S. Pomponi *

Thin encrusting, dermal canals, branched; orange/pink; oscules: round, round, oscular membranes: translucent;

This species might represent a skeletalless taxa within the Family Ianthellidae, Order Verongiida

CLASS:

Demospongiae

ORDER:

Verongiida

FAMILY:

Ianthellidae

DEPTH:

82 m

LOCATION:

North Carolina, proposed 780
bottom MPA, low relief hard
bottom, 80 m

Demospongiae MPA-07



201406212_T-11-37-57.jpg

IDENTIFIER: M.C. Diaz, S. Pomponi *

Branching/repent, porous, tan; oscules: round, sparse along branches, 2-4 mm wide, oscular membranes: transparent.

CLASS:

Demospongiae

DEPTH:

164 m

LOCATION:

South Carolina, Outside Northern South Carolina MPA, 165 m Iceberg Scar

Demospongiae MPA-08



201406241_T-08-44-50_045.jpg

IDENTIFIER: M.C. Diaz, S. Pomponi *

Massive/subglobular, corrugated, white tinges; brown/gray; oscules: with membrane.

CLASS:

Demospongiae

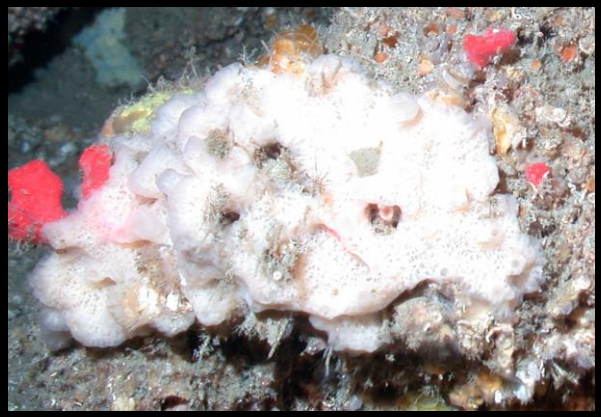
DEPTH:

52 m

LOCATION:

South Carolina, Inside Proposed Edisto Reconfig 3, 52 m Ridge

Demospongiae MPA-09



201307113-T-13-04-21_039 .jpg

IDENTIFIER: M.C. Diaz, S. Pomponi *

Massive/convoluted, porous, tan/white; oscules: oscular volcanoes, 2-4 mm wide.

CLASS:

Demospongiae

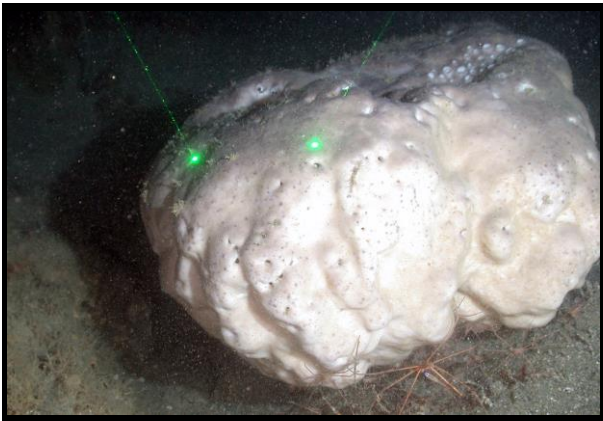
DEPTH:

133 m

LOCATION:

South Carolina, Proposed Devil's Hole 2 and 3 MPAs, E-W ridge, south slope, 130 m

Demospongiae MPA-11



201805201_T-07-52-28_016.jpg

IDENTIFIER: M.C. Diaz, S. Pomponi *

Massive/subglobular, overall size: 26.2 x 38.2 cm; irregular, large apertures on sides; white/gray; oscules: on top, clumped, 5-10 mm wide, oscular membranes: present; this species might represent a taxa from Family: Geodiidae.

CLASS:

Demospongiae

DEPTH:

65 m

LOCATION:

Georgia, Outside Georgia MPA; Target GA-2; 61 m

Demospongiae MPA-12



201805181_T-11-16-54_166.jpg

IDENTIFIER: M.C. Diaz, S. Pomponi *

Massive/amorphous, digitate projections, yellow/tan; oscules: basal oscular projections, oscular membranes: absent; this species might represent a taxa of Family: Oscarellidae (Class: Homoscleromorpha) or Coelosphaeridae (Class: Demospongiae).

CLASS:

Demospongiae

DEPTH:

72 m

LOCATION:

Florida, Oculina HAPC West Ext.,
Historical Eau Gallie XS; 75 m

Demospongiae MPA-16



201706232_T-09-48-02_069a.jpg

IDENTIFIER: M.C. Diaz, S. Pomponi *

Thick encrusting, irregular, brown/red; tan internally; oscules: apical, sparse, several cm wide, oscular membranes: lighter color and thick.

CLASS:

Demospongiae

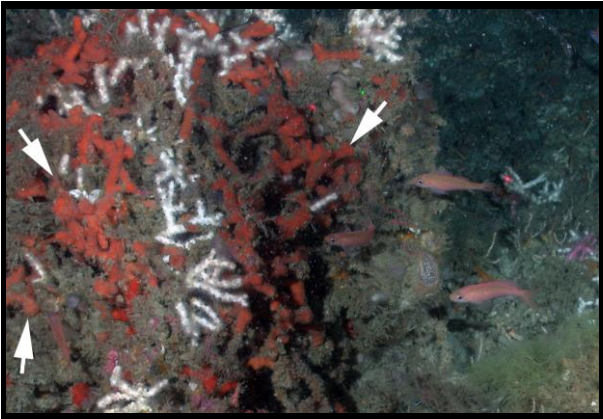
DEPTH:

61 m

LOCATION:

Florida, Outside North Florida
MPA; 65 m; Target FL-1

Demospongiae MPA-24



201106072_T-19-53-50_9830.jpg

IDENTIFIER: M.C. Diaz, S. Pomponi *

Thin encrusting, smooth, red/orange; oscules: not visible, could be *Clathria* or *Theonella wrightae*.

CLASS:

Demospongiae

DEPTH:

67 m

LOCATION:

Florida, Oculina HAPC, Chapman's Reef West

Demospongiae MPA-25



201307085-T-16-54-04_011 .jpg

IDENTIFIER: M.C. Diaz, S. Pomponi *

Thick encrusting, volcano projections, rugose, white; oscules: on top.

CLASS:

Demospongiae

DEPTH:

105 m

LOCATION:

North Carolina, Proposed N Cape Lookout 2 MPA, east slope of 70 m terrace, 105 m

Demospongiae MPA-26



201207152_T-09-22-53_Dive27_134.jpg

IDENTIFIER: M.C. Diaz, S. Pomponi *

Thin encrusting, smooth, blue; oscules: round, possible skeletaless sponge *Halisarca caerulea*, expected radial canals departing from the oscules.

CLASS:

Demospongiae

DEPTH:

168 m

LOCATION:

South Carolina, Northern S.C.
MPA, south and outside of MPA

Demospongiae MPA-28



201805222_T-10-11-15_012.jpg

IDENTIFIER: M.C. Diaz, S. Pomponi *

Bush, thin elongated branches, smooth, oscules: not visible.

CLASS:

Demospongiae

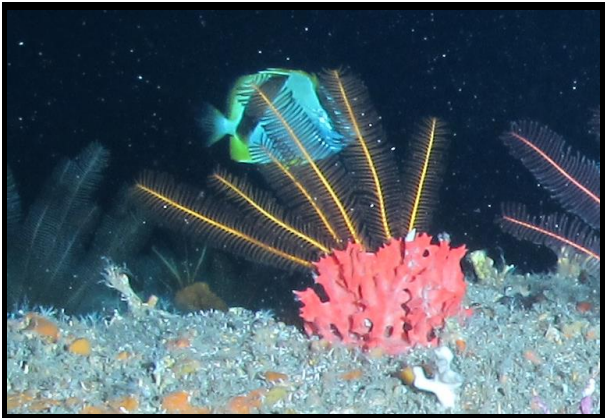
DEPTH:

45 m

LOCATION:

South Carolina, Outside Northern
South Carolina MPA; Ridge SC-6;
65 m

Demospongiae MPA-30



201406232_T-11-27-23_009.jpg

IDENTIFIER: M.C. Diaz, S. Pomponi *

Flabellate, bushy, strongly conulose, smooth; red/brown; oscules: not visible.

CLASS:

Demospongiae

DEPTH:

103 m

LOCATION:

North Carolina, Outside/Inside
Proposed North Cape Lookout 3,
Edge of 104 m Ravine

Demospongiae MPA-38



201207183_T-15-25-38_Dive37_100.jpg

IDENTIFIER: M.C. Diaz, S. Pomponi *

Spherical, bumpy, yellow/orange; oscules: sparse, round, oscular membranes: thin collared; may be Verongiida.

CLASS:

Demospongiae

DEPTH:

57 m

LOCATION:

Florida, 55 nmi east of St.
Augustine, 60-m reef line, outside
of MPA

***Corticium* sp. MPA-01^N**



200208221005_Deck.jpg

22-VIII-02-1-005

CLASS:

Homoscleromorpha

ORDER:

Homosclerophorida

FAMILY:

Plakinidae

DEPTH:

660 m

LOCATION:

South Carolina, ~120 Nm S.E. of Charleston, SC; Stetson's Banks, Lophelia Coral Reef, Reed's Pinnacle

IDENTIFIER: M.C. Diaz, S. Pomponi ***

Thick encrusting, overall size: 2.5 - 4.5 cm; smooth, light brown; oscules: slit shaped, sparse, 2-9 mm wide,
(no in situ image available)

Hyalonema cf. conqueror

Tabachnick, Menshenina, Lopes & Hajdu, 2009



200208291004_2.JPG

29-VIII-02-1-004

IDENTIFIER: M.C. Diaz, S. Pomponi ***

Globular to cone, whip like peduncle, tan; oscules: apical sieve plate.

CLASS:

Hexactinellida

ORDER:

Amphidiscosida

FAMILY:

Hyalonematidae

DEPTH:

586 m

LOCATION:

Georgia, ~90 Nm East of Jacksonville, Florida; Jacksonville Lithoherm Pinnacles, Pinnacle 1 Peak 6

Hyalonema cf. conqueror

Tabachnick, Menshenina, Lopes & Hajdu, 2009



200208291004_Deck.jpg

29-VIII-02-1-004

IDENTIFIER: M.C. Diaz, S. Pomponi ***

Globular to cone, whip like peduncle, tan; oscules: apical sieve plate.

CLASS:

Hexactinellida

ORDER:

Amphidiscosida

FAMILY:

Hyalonematidae

DEPTH:

586 m

LOCATION:

Georgia, ~90 Nm East of Jacksonville, Florida; Jacksonville Lithoherm Pinnacles, Pinnacle 1 Peak 6

Hyalonema (Oonema) sp. MPA-01



200511091009_2.jpg

9-XI-05-1-009

CLASS:

Hexactinellida

ORDER:

Amphidiscosida

FAMILY:

Hyalonematidae

DEPTH:

743 m

LOCATION:

Florida, St. Augustine, Reed Peak
#160- Lophelia Lithoherm

IDENTIFIER: M. Dohrmann, H. Reiswig ***

bell-shaped, whip like peduncle, white/brown; oscules: apical, abundant.

Hertwigia falcifera

Schmidt, 1880



200511082002_2.jpg

8-XI-05-2-002

IDENTIFIER: M. Dohrmann, H. Reiswig ***

Flabellate, wall formed by anastomosing tubes, riddle by variously shaped openings, bright yellow; oscules: abundant, various shapes.

Hertwigia falcifera

Schmidt, 1880



200511082002_deck2.TIF

8-XI-05-2-002

IDENTIFIER: M. Dohrmann, H. Reiswig ***

Flabellate, wall formed by anastomosing tubes, riddle by variously shaped openings, bright yellow; oscules: abundant, various shapes.

CLASS:

Hexactinellida

ORDER:

Lyssacinosida

FAMILY:

Euplectellidae

DEPTH:

729 m

LOCATION:

Florida, Cape Canaveral, Reed Peak #151 - Lophelia Bioherm

CLASS:

Hexactinellida

ORDER:

Lyssacinosida

FAMILY:

Euplectellidae

DEPTH:

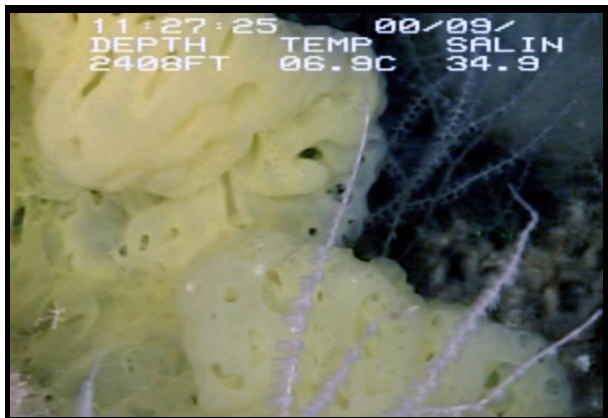
729 m

LOCATION:

Florida, Cape Canaveral, Reed Peak #151 - Lophelia Bioherm

Hertwigia falcifera

Schmidt, 1880



200908071001_2.jpg

7-VIII-09-1-001

IDENTIFIER: M. Dohrmann ***

Massive, composed of anastomosing tubes and branching dichotomously, 32 cm tall x 64 cm wide; lemon yellow; oscules: present, along tube(s), 3-20 mm wide.

CLASS:

Hexactinellida

ORDER:

Lyssacinosida

FAMILY:

Euplectellidae

DEPTH:

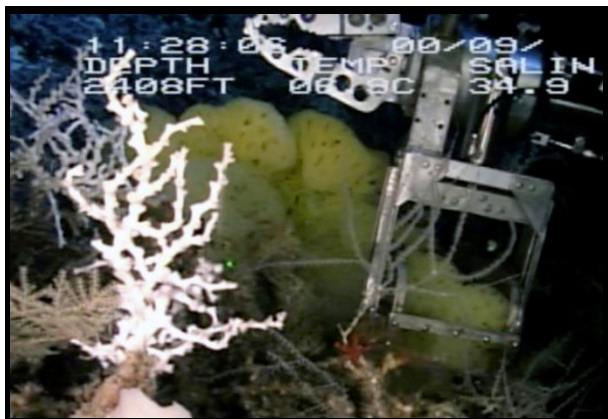
734 m

LOCATION:

Florida; Straits of Florida, N. Canaveral Bioherms, Reed Reef #113

Hertwigia falcifera

Schmidt, 1880



200908071001_1.jpg

7-VIII-09-1-001

IDENTIFIER: M. Dohrmann ***

Massive, composed of anastomosing tubes and branching dichotomously, 32 cm tall x 64 cm wide; lemon yellow; oscules: present, along tube(s), 3-20 mm wide.

CLASS:

Hexactinellida

ORDER:

Lyssacinosida

FAMILY:

Euplectellidae

DEPTH:

734 m

LOCATION:

Florida; Straits of Florida, N. Canaveral Bioherms, Reed Reef #113

Hertwigia falcifera

Schmidt, 1880



200908071001_Deck.jpg

7-VIII-09-1-001

CLASS:

Hexactinellida

ORDER:

Lyssacinosida

FAMILY:

Euplectellidae

DEPTH:

734 m

LOCATION:

Florida; Straits of Florida, N. Canaveral Bioherms, Reed Reef #113

IDENTIFIER: M. Dohrmann ***

Massive, composed of anastomosing tubes and branching dichotomously, 32 cm tall x 64 cm wide; lemon yellow; oscules: present, along tube(s), 3-20 mm wide.

Hertwigia falcifera

Schmidt, 1880



200908081002_1.jpg

8-VIII-09-1-002

CLASS:

Hexactinellida

ORDER:

Lyssacinosida

FAMILY:

Euplectellidae

DEPTH:

707 m

LOCATION:

Florida; Straits of Florida, Canaveral Bioherms, Reed Reef #137 East Peak

IDENTIFIER: M. Dohrmann ***

Massive, composed of anastomosing tubes and branching dichotomously, 40 cm tall x 20 cm wide; lemon yellow; oscules: present, along tube(s), 6-45 mm wide.

Hertwigia falcifera

Schmidt, 1880



200908081002-Deck1.jpg

8-VIII-09-1-002

CLASS:

Hexactinellida

ORDER:

Lyssacinosida

FAMILY:

Euplectellidae

DEPTH:

707 m

LOCATION:

Florida; Straits of Florida,
Canaveral Bioherms, Reed Reef
#137 East Peak

IDENTIFIER: M. Dohrmann ***

Massive, composed of anastomosing tubes and branching dichotomously, 40 cm tall x 20 cm wide; lemon yellow; oscules: present, along tube(s), 6-45 mm wide.

Hertwigia falcifera

Schmidt, 1880



200908112002_1.jpg

11-VIII-09-2-002

CLASS:

Hexactinellida

ORDER:

Lyssacinosida

FAMILY:

Euplectellidae

DEPTH:

714 m

LOCATION:

Florida; Straits of Florida,
Canaveral Bioherms, Reed Reef
#245 (Fath)

IDENTIFIER: M. Dohrmann ***

Massive, composed of anastomosing tubes and branching dichotomously, 40 cm tall x 20 cm wide; lemon yellow; oscules: present, along tube(s), 6-45 mm wide.

***Heterotella* aff. *Corbicula*^N**

(Bowerbank, 1862)



200405211002_Deck.jpg

21-V-04-1-002

IDENTIFIER: M.C. Diaz, S. Pomponi ***

Sack shaped, pierced by oscules, white; oscules: terminal, pore sieve, oscular membranes: absent; (no in situ image available)

CLASS:

Hexactinellida

ORDER:

Lyssacinosida

FAMILY:

Euplectellidae

DEPTH:

762 m

LOCATION:

Florida; ~90 Nm East of St. Augustine, Lophelia Pinnacle #3

***Heterotella* sp. MPA-01**



200208272003_Deck.jpg

27-VIII-02-2-003

IDENTIFIER: M.C. Diaz, S. Pomponi ***

Cluster hollow tubes, sack distally tapering, pierced by oscules, white; oscules: apical sieve plate, (no in situ image available)

CLASS:

Hexactinellida

ORDER:

Lyssacinosida

FAMILY:

Euplectellidae

DEPTH:

515 m

LOCATION:

Georgia, ~90 Nm East of Savannah, Georgia; Savannah Lithotherms; Site 2, Pinnacle 1

Regadrella sp.



200908082001.jpg

8-VIII-09-2-001

IDENTIFIER: M. Dohrmann et. al. 2012 ***

Globular tubular, 17 cm tall; parietal oscules, white; oscules: apical sieve plate, brittle.

CLASS:

Hexactinellida

ORDER:

Lyssacinosida

FAMILY:

Euplectellidae

DEPTH:

737 m

LOCATION:

Florida; Straits of Florida, Canaveral Bioherms, Reed Reef #135

Regadrella sp. MPA-01



200511082004_deck.TIF

8-XI-05-2-004

IDENTIFIER: M. Dohrmann, H. Reisinger ***

Cluster hollow tubes, pierced by oscules, spicule end pierced surface; oscules: apical sieve plate.

CLASS:

Hexactinellida

ORDER:

Lyssacinosida

FAMILY:

Euplectellidae

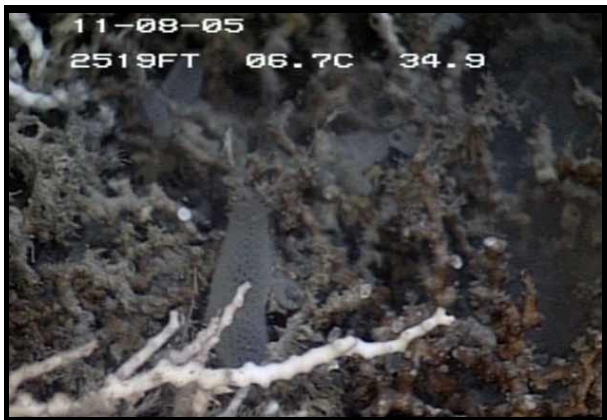
DEPTH:

768 m

LOCATION:

Florida, Cape Canaveral, Reed Peak #151- Lophelia Bioherm

***Regadrella* sp. MPA-01**



200511082004.jpg

8-XI-05-2-004

IDENTIFIER: M. Dohrmann, H. Reiswig ***

Cluster hollow tubes, pierced by oscules, spicule end pierced surface; oscules: apical sieve plate.

CLASS:

Hexactinellida

ORDER:

Lyssacinosida

FAMILY:

Euplectellidae

DEPTH:

768 m

LOCATION:

Florida, Cape Canaveral, Reed Peak #151- Lophelia Bioherm

Nodastrella asconemaoida

Dohrmann, Göcke, Reed & Janussen, 2012



200208222004.jpg

22-VIII-02-2-004

IDENTIFIER: R. van Soest, M.C. Diaz, S. Pomponi ***

Vase, porous, white; oscules: osculum, with outward-flaring margins, compressible.

CLASS:

Hexactinellida

ORDER:

Lyssacinosida

FAMILY:

Rossellidae

DEPTH:

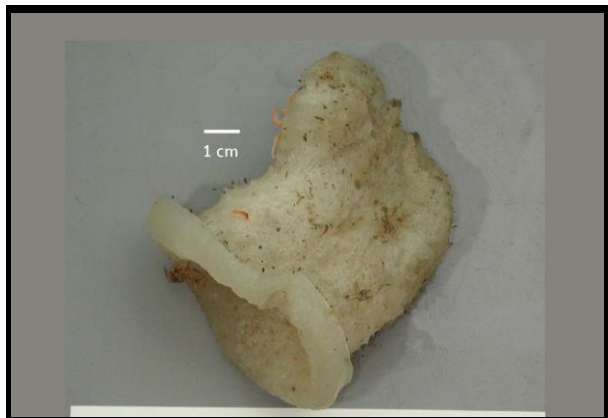
628 m

LOCATION:

South Carolina, ~120 Nm S.E. of Charleston, SC; Stetson's Banks, Lophelia Coral Reef, Reed's Pinnacle

Nodastrella asconemaoida

Dohrmann, Göcke, Reed & Janussen, 2012



200208222004_Deck.jpg

22-VIII-02-2-004

IDENTIFIER: R. van Soest, M.C. Diaz, S. Pomponi ***

Vase, porous, white; oscules: osculum, with outward-flaring margins, compressible.

CLASS:

Hexactinellida

ORDER:

Lyssacinosida

FAMILY:

Rossellidae

DEPTH:

628 m

LOCATION:

South Carolina, ~120 Nm S.E. of Charleston, SC; Stetson's Banks, Lophelia Coral Reef, Reed's Pinnacle

Nodastrella asconemaoida

Dohrmann, Göcke, Reed & Janussen, 2012



200508051004_3.jpg

5-VIII-05-1-004

IDENTIFIER: R. van Soest, M.C. Diaz, S. Pomponi ***

Vase, porous, white; oscules: osculum, with outward-flaring margins, compressible.

CLASS:

Hexactinellida

ORDER:

Lyssacinosida

FAMILY:

Rossellidae

DEPTH:

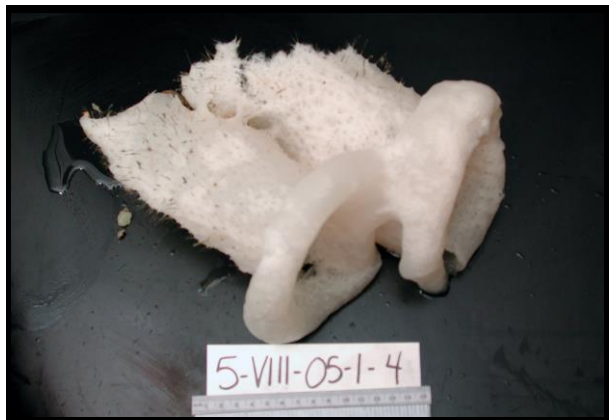
337 m

LOCATION:

Florida; Key Biscayne; Miami Terrace, Reed Site Bu2, West Ridge

Nodastrella asconemaoida

Dohrmann, Göcke, Reed & Janussen, 2012



200508051004_Deck.JPG

5-VIII-05-1-004

IDENTIFIER: R. van Soest, M.C. Diaz, S. Pomponi ***

Vase, porous, white; oscules: osculum, with outward-flaring margins, compressible.

CLASS:

Hexactinellida

ORDER:

Lyssacinosida

FAMILY:

Rossellidae

DEPTH:

337 m

LOCATION:

Florida; Key Biscayne; Miami Terrace, Reed Site Bu2, West Ridge

Nodastrella asconemaoida

Dohrmann, Göcke, Reed & Janussen, 2012



200908101001_deck.jpg

10-VIII-09-1-001

IDENTIFIER: M. Dohrmann et. al. 2012 ***

Vase, 23 cm high, 13 cm wide; white/gray; oscules: osculum, with outward-flaring margins.

CLASS:

Hexactinellida

ORDER:

Lyssacinosida

FAMILY:

Rossellidae

DEPTH:

723 m

LOCATION:

Florida; Straits of Florida, Canaveral Bioherms, Reed Reef #240

Nodastrella nodastrella

(Topsent, 1915)



200511111008_2.jpg

11-XI-05-1-008

IDENTIFIER: M. Dohrmann et. al. 2012 ***

Vase, white; oscules: osculum, with outward-flaring margins.

CLASS:

Hexactinellida

ORDER:

Lyssacinosida

FAMILY:

Rossellidae

DEPTH:

760 m

LOCATION:

Florida, West Palm, Near Sea Farer Pipeline Site- Peak #7, Reed Peak #296- Lophelia Bioherm

Nodastrella nodastrella

(Topsent, 1915)



200908071002_deck.jpg

7-VIII-09-1-002

IDENTIFIER: M. Dohrmann et. al. 2012 ***

Vase, 24.5 cm tall; white; oscules: osculum, with outward-flaring margins, 15 cm wide.

CLASS:

Hexactinellida

ORDER:

Lyssacinosida

FAMILY:

Rossellidae

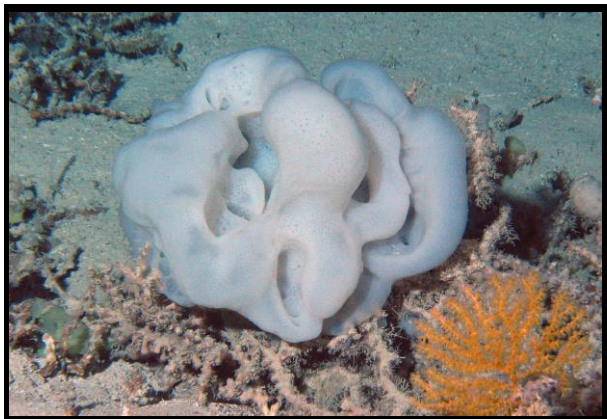
DEPTH:

759 m

LOCATION:

Florida; Straits of Florida, N. Canaveral Bioherms, Reed Reef #113

***Nodastrella* sp. MPA-01^N**



200508161003_1.jpg

16-VIII-05-1-003

IDENTIFIER: R. van Soest, M.C. Diaz, S. Pomponi ***

Sacular, smooth, white; oscules: on top of lobe(s).

CLASS:

Hexactinellida

ORDER:

Lyssacinosida

FAMILY:

Rossellidae

DEPTH:

742 m

LOCATION:

Florida; Straits of Florida; Fort
Pierce, Lophelia Bioherm

***Nodastrella* sp. MPA-01^N**



200508161003_Deck.JPG

16-VIII-05-1-003

IDENTIFIER: R. van Soest, M.C. Diaz, S. Pomponi ***

Sacular, smooth, white; oscules: on top of lobe(s).

CLASS:

Hexactinellida

ORDER:

Lyssacinosida

FAMILY:

Rossellidae

DEPTH:

742 m

LOCATION:

Florida; Straits of Florida; Fort
Pierce, Lophelia Bioherm

Vazella pourtalesii

(Schmidt, 1870)



201106091_T-19-43-47_0412.jpg

IDENTIFIER: M.C. Diaz, S. Pomponi ***

Globular, overall size: 21.3 x 19.3 cm; hairy, tan/white; oscules: apical.

CLASS:

Hexactinellida

ORDER:

Lyssacinosida

FAMILY:

Rossellidae

DEPTH:

349 m

LOCATION:

Florida, Deep Coral HAPC, SW Miami Terrace, Near Sonar WP #18

Vazella pourtalesii

(Schmidt, 1870)



200405262001_Deck1.JPG

26-V-04-2-001

IDENTIFIER: M.C. Diaz, S. Pomponi ***

Globular, hairy, tan/white; oscules: apical, (no in situ image available)

CLASS:

Hexactinellida

ORDER:

Lyssacinosida

FAMILY:

Rossellidae

DEPTH:

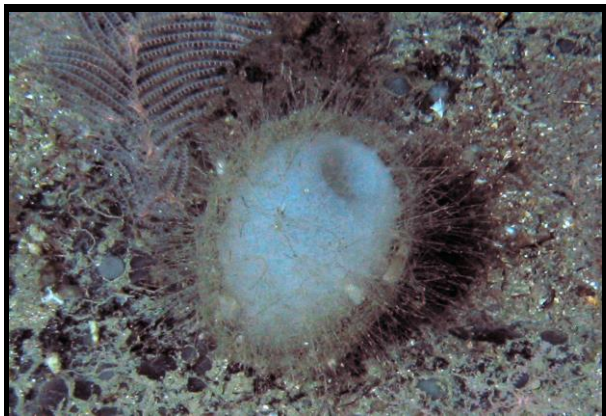
430 m

LOCATION:

Florida; ~15 nm East of Ft. Lauderdale, Miami Terrace, West Ridge, Site #Bu-6

Vazella pourtalesii

(Schmidt, 1870)



200508051002_1.jpg

5-VIII-05-1-002

IDENTIFIER: M.C. Diaz, S. Pomponi ***

Tube(s), short, hairy with long spicules, white; oscules: round.

CLASS:

Hexactinellida

ORDER:

Lyssacinosida

FAMILY:

Rossellidae

DEPTH:

338 m

LOCATION:

Florida; Key Biscayne; Miami Terrace, Reed Site Bu2, West Ridge

Vazella pourtalesii

(Schmidt, 1870)



200508051002_Deck1.JPG

5-VIII-05-1-002

IDENTIFIER: M.C. Diaz, S. Pomponi ***

Tube(s), short, hairy with long spicules, white; oscules: round.

CLASS:

Hexactinellida

ORDER:

Lyssacinosida

FAMILY:

Rossellidae

DEPTH:

338 m

LOCATION:

Florida; Key Biscayne; Miami Terrace, Reed Site Bu2, West Ridge

Aphrocallistes beatrix

Gray, 1858



201106091_T-19-42-04_0405.jpg

IDENTIFIER: M.C. Diaz, S. Pomponi *

Tube(s), radial sack tubes on outer wall, overall size: 38.7 x 25.9 cm; porous, white; oscules: not visible.

CLASS:

Hexactinellida

ORDER:

Sceptrulophora

FAMILY:

Aphrocallistidae

DEPTH:

354 m

LOCATION:

Florida, Deep Coral HAPC, SW Miami Terrace, Near Sonar WP #18

Aphrocallistes beatrix

Gray, 1858



200208221003_Deck.jpg

22-VIII-02-1-003

IDENTIFIER: M.C. Diaz, S. Pomponi ***

Tube(s), sack shaped tubes radiate from wall, porous, white; oscules: oscules along tubes, (no in situ image available)

CLASS:

Hexactinellida

ORDER:

Sceptrulophora

FAMILY:

Aphrocallistidae

DEPTH:

662 m

LOCATION:

South Carolina, ~120 Nm S.E. of Charleston, SC; Stetson's Banks, Lophelia Coral Reef, Reed's Pinnacle

Aphrocallistes beatrix

Gray, 1858



200208261004.jpg

26-VIII-02-1-004

IDENTIFIER: M.C. Diaz, S. Pomponi ***

Tube(s), radial sack tubes on outer wall, porous, covered by anthozoans; white; oscules: not visible.

CLASS:

Hexactinellida

ORDER:

Sceptrulophora

FAMILY:

Aphrocallistidae

DEPTH:

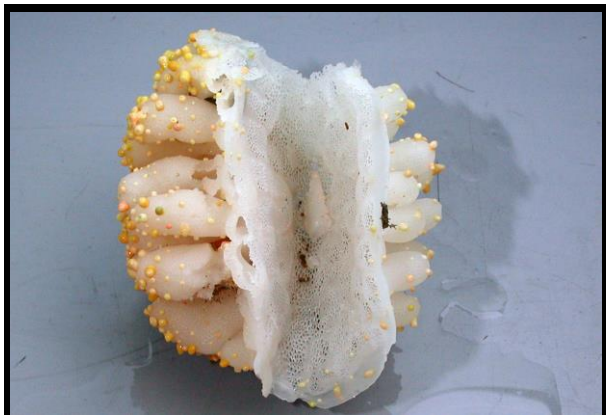
518 m

LOCATION:

Georgia, ~90 Nm East of Savannah, Georgia; Savannah Lithoherms, Site 2, Pinnacle 6

Aphrocallistes beatrix

Gray, 1858



200208261004_Deck.jpg

26-VIII-02-1-004

IDENTIFIER: M.C. Diaz, S. Pomponi ***

Tube(s), radial sack tubes on outer wall, porous, covered by anthozoans; white; oscules: not visible.

CLASS:

Hexactinellida

ORDER:

Sceptrulophora

FAMILY:

Aphrocallistidae

DEPTH:

518 m

LOCATION:

Georgia, ~90 Nm East of Savannah, Georgia; Savannah Lithoherms, Site 2, Pinnacle 6

Aphrocallistes beatrix

Gray, 1858



200405222010_2.jpg

22-V-04-2-010

IDENTIFIER: M.C. Diaz, S. Pomponi ***

Funnel, radial blind tubules on outer wall, porous, white.

CLASS:

Hexactinellida

ORDER:

Sceptrulophora

FAMILY:

Aphrocallistidae

DEPTH:

785 m

LOCATION:

Florida; ~90 Nm East of Jacksonville, Lophelia Pinnacle #186

Aphrocallistes beatrix

Gray, 1858



200405222010_Deck.jpg

22-V-04-2-010

IDENTIFIER: M.C. Diaz, S. Pomponi ***

Funnel, radial blind tubules on outer wall, porous, white.

CLASS:

Hexactinellida

ORDER:

Sceptrulophora

FAMILY:

Aphrocallistidae

DEPTH:

785 m

LOCATION:

Florida; ~90 Nm East of Jacksonville, Lophelia Pinnacle #186

Aphrocallistes beatrix

Gray, 1858



200508061014_2.jpg

6-VIII-05-1-014

IDENTIFIER: M.C. Diaz, S. Pomponi ***

Broad funnel, Blind, outer wall with radial closed tubules, concave top porous; tan; oscules: not visible, yellow zoanthids on outer and inner walls.

CLASS:

Hexactinellida

ORDER:

Sceptrulophora

FAMILY:

Aphrocallistidae

DEPTH:

339 m

LOCATION:

Florida; Miami Terrace
Escarpment, Reed Site Bu2

Aphrocallistes beatrix

Gray, 1858



200508061014_Deck.jpg

6-VIII-05-1-014

IDENTIFIER: M.C. Diaz, S. Pomponi ***

Broad funnel, Blind, outer wall with radial closed tubules, concave top porous; tan; oscules: not visible.

CLASS:

Hexactinellida

ORDER:

Sceptrulophora

FAMILY:

Aphrocallistidae

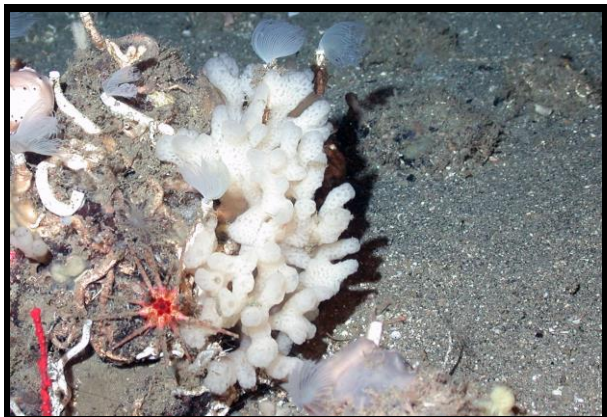
DEPTH:

339 m

LOCATION:

Florida; Miami Terrace
Escarpment, Reed Site Bu2

Euretidae MPA-01^N



201207152_T-09-20-09_Dive27_127.jpg

IDENTIFIER: M.C. Diaz, S. Pomponi *

Branching, ramose, overall size: 8.1 x 15.8 cm; porous, white; oscules: on top of lobe(s).

CLASS:

Hexactinellida

ORDER:

Sceptrulophora

FAMILY:

Euretidae

DEPTH:

168 m

LOCATION:

South Carolina, Northern S.C.
MPA, south and outside of MPA

Euretidae MPA-01^N



200208232006_Deck.jpg

23-VIII-02-2-006

IDENTIFIER: M.C. Diaz, S. Pomponi, R. van Soest ***

Branching, ramose, porous, white; oscules: side and top of branches, oscular membranes: absent; (no in situ image available)

CLASS:

Hexactinellida

ORDER:

Sceptrulophora

FAMILY:

Euretidae

DEPTH:

199 m

LOCATION:

South Carolina, ~85 Nm East of
Charleston, SC; Charleston Lumps
North, Phosphoric Ridges

Conorete pourtalesi

Reiswig & Dohrmann, 2014



201008071002_Deck .jpg

IDENTIFIER: R. van Soest ***

Massive, composed of anastomosing tubes and branching dichotomously, 9.8 cm wide - 7 cm tall; tan; tube walls: 1.2-1.5 mm thick; tube diam: 4.5-14.3 mm.

CLASS:

Hexactinellida

ORDER:

Sceptrulophora

FAMILY:

Euretidae

DEPTH:

198 m

LOCATION:

Verrucocoeloidea liberatorii

Reiswig & Dohrmann, 2014



201805211_T-11-19-24_285.jpg

IDENTIFIER: R. van Soest *

Massive, overall size: 33 x 41.2 cm; spiky, tan/white; oscules: apical, oscular membranes: transparent.

CLASS:

Hexactinellida

ORDER:

Sceptrulophora

FAMILY:

Euretidae

DEPTH:

261 m

LOCATION:

South Carolina, Outside Northern South Carolina MPA; Deep Iceberg Scour; 250 m

Hexactinellida MPA-01



201106091_T-19-43-41_0411.jpg

IDENTIFIER: M.C. Diaz, S. Pomponi *

Blob, two concave depressions, overall size: 9.9 x 14 cm; smooth on the sides, sieve like top; white.

CLASS:

Hexactinellida

DEPTH:

349 m

LOCATION:

Florida, Deep Coral HAPC, SW
Miami Terrace, Near Sonar WP
#18

Hexactinellida MPA-02



201805211_T-10-37-36_115.jpg

IDENTIFIER: M.C. Diaz, S. Pomponi *

Thick encrusting, overall size: 5.4 x 9.7 cm; smooth, white.

CLASS:

Hexactinellida

DEPTH:

260 m

LOCATION:

South Carolina, Outside Northern
South Carolina MPA; Deep
Iceberg Scour; 250 m

Leucandra sp. MPA-01



201805201_T-10-18-47_175.jpg

IDENTIFIER: M. Klautau & R. van Soest *

Lobe, roundish bottom, hispid, tan/white; oscules: one on top, spicular fringe.

CLASS:

Calcarea

ORDER:

Leucosolenida

FAMILY:

Grantiidae

DEPTH:

65 m

LOCATION:

Georgia, Outside Georgia MPA;
Target GA-2; 61 m