

OK

# THE CONNOISSEUR *of seashells*

PER LO SPECIALISTA IN CONCHIGLIE ● POUR LE CONNAISSEUR DE COQUILLAGES



*Ancillista velesiana* IREDALE, 1936

forma *sinistrorsa* (RAYBAUDI, 1984)

UNICA

UNIQUE

1

JANUARY  
GENNAIO 1985

GEMME del MARE

P.O. BOX 561 • ROMA 00187 (ITALY)











# THE CONNOISSEUR *of seashells*

PER LO SPECIALISTA IN CONCHIGLIE



POUR LE CONNAISSEUR DE COQUILLAGES



*Umbilia (Umbilia) armeniaca armeniaca*  
VERCO, 1912

forma *westralica* (RAYBAUDI, 1980)

RECORD DEL MONDO

WORLD SIZE RECORD

2

MARCH  
MARZO

1985

GEMME del MARE

P.O. BOX 561 • ROMA 00187 (ITALY)



Familia Muricidae DA COSTA, 1776

239	<i>Pterynotus bednalli</i> BRAZIER, 1878 f. <i>maxima</i> (83) Cape Leveque W.A.: special, gem	300.00
240	<i>Pterynotus loebbecki</i> KOBELT, 1878 f. <i>maxima</i> (72) Philippines: fine-gem	650.00
241	<i>Pterinotus phillopterus</i> LAMARCK, 1822 (60,5) f. <i>brunnea</i> Antilles: gem	225.00
242	<i>Marchia bibbeyi</i> RADWIN-D'ATTILIO, 1976 (40,5) Japan; deep w. gem	350.00
243	<i>Murexiella bojadorensis</i> LOCARD, 1897 (38,5) Segegal: gem	160.00



244	<i>Murexiella bojadorensis</i> LOCARD, 1897 f. <i>albinea</i> (29) Senegal: gem	175.00
245	<i>Murexiella bojadorensis</i> LOCARD, 1897 f. <i>albinea</i> (42) Senegal; large, gem	250.00

Familia Volutidae RAFINESQUE, 1815

246	<i>Cottonia nodiplicata</i> COX, 1910 (335) Western Australia; rare, fine +	500.00
247	<i>Lyria (Lyria) queketti</i> E. A. SMITH, 1901 (61) Natal: rare, special fine	350.00
248	<i>Amoria (Amoria) macandrewi</i> SOWEBY III, 1887 f. <i>intermedia</i> (81) W. Austr.; gem	250.00
249	<i>Festilyria ponsonbyi</i> E. A. SMITH, 1901 (72) Durban, gem	400.00
250	<i>Amoria (Relegamoria) molleri</i> IREDALE, 1936 (94) banded f. Cape Moreton; rare gem	200.00
251	<i>Volutoconus grossi</i> HABE-KOSUGE, 1966 f. <i>nana</i> (55) Keppel Bay; gem	220.00
252	<i>Volutocorbis semirugata</i> RHEDER-WEAVER, 1974 (59) Natal, rare, fine +	385.00
253	<i>Ericusa (Ericusa) fulgetra lunulstigata</i> VERCO, 1912 (114) S. Australia; gem	180.00
254	<i>Ericusa (Ericusa) fulgetra alba</i> VERCO, 1912 (107) S. Australia; gem	220.00
255	<i>Cymbiola (Aulica) aulica</i> SOWERBY I, 1825 (113) Philippines I.; gem	150.00
256	<i>Cymbiola (Aulica) aulica</i> SOWERBY I, 1825 (105) Philippines I.; gem	120.00
257	<i>Cymbiola (Aulicina) irvinae</i> E. A. SMITH, 1909 (92) W. Australia; live coll. gem	350.00
258	<i>Cymbiola (Aulicina) irvinae</i> E. A. SMITH, 1909 smooth f. (106) Shark B.; large, fresh dead	200.00
259	<i>Cymbiola (Aulicina) irvinae</i> E. A. SMITH, 1909 (83) W. Australia; gem	200.00
260	<i>Cymbiola (Aulicina) irvinae</i> E. A. SMITH, 1909 (91) W. Australia; gem	250.00
261	<i>Ericusa (Ericusa) fulgetra tricineta</i> VERCO, 1912 (112) S. Australia; rare gem	300.00
262	<i>Ericusa (Ericusa) orca</i> COTTON, 1952 (128) G.A.B. deep. w.; rare, fine ++	420.00
263	<i>Ericusa (Ericusa) fulgetra uncineta</i> VERCO, 1912 (116) ALbany deep. w.; rare, good	150.00

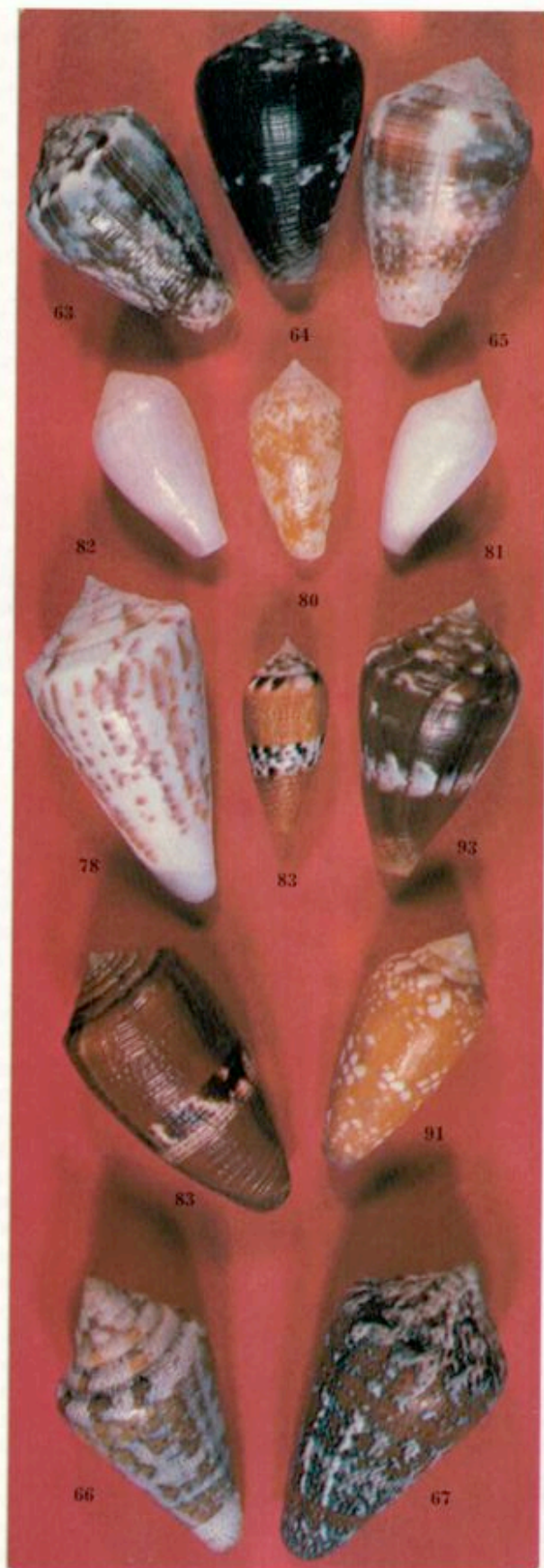


165 <i>laterculatus</i> SOWERBY, 1870 Phil. I. ....	5	10
166 <i>legatus</i> LAMARCK, 1810 P.I.; Sol. I. ....	25	50
167 <i>l. large f.</i> LAMARCK, 1810 Reunion .....	180	200
168 <i>lehemani</i> DA MOTTA-ROCKEL, 1979 Maldives .	25	50
169 <i>lentiginosus</i> REEVE, 1844 Laccadives .....	10	15
170 <i>lienardi</i> BERNARDI-CROSSE, 1861 New Caled.	30	50
171 <i>lignarius</i> REEVE, 1843 Phil. I. ....	5	8
172 <i>lineolatus</i> VALENCIENNES, 1832 Panama .....	12	16
173 <i>litoglyphus</i> HWASS, 1792 Ethiopia; Tahiti .....	8	12
174 <i>litteratus</i> LINNAEUS, 1758 Phil. I. ....	5	20
175 <i>lividus</i> HWASS, 1792 several loc. ....	1	2
176 <i>longurionis</i> KIENER, 1845 India .....	25	30
177 <i>lorenzianus</i> DILLWIN, 1817 Honduras .....	55	65
178 <i>lucidus</i> WOOD, 1828 Galap. I. ....	15	20
179 <i>macarae</i> BERNARDI, 1857 Phil. I. ....	15	20
180 <i>magnificus</i> REEVE, 1843 Solomon I. ....	5	12
181 <i>mahogani</i> REEVE, 1843 Panama .....	5	8
182 <i>malacanus</i> HWASS, 1792 Singapore .....	8	15
183 <i>m. albin. f.</i> HWASS, 1792 India .....	25	30
184 <i>maldivus</i> HWASS, 1792 Maldives I. ....	15	18
185 <i>marchionatus</i> HINDS, 1843 Marquesas I. ....	20	100
186 <i>m. yellow f.</i> HINDS, 1843 Marquesas I. ....	50	70
187 <i>marmoreus</i> LINNAEUS, 1758 New Cal. ....	3	15
188 <i>m. red f.</i> LINNAEUS, 1758 New Cal. ....	70	100
189 <i>mediterraneus</i> HWASS, 1792 Medit. Sea .....	3	5
190 <i>memiae</i> (HABE-KOSUGE, 1970) Phil. I. ....	50	70
191 <i>mercator</i> LINNAEUS, 1758 Senegal .....	15	25
192 <i>m. var reticulatus</i> BORN, 1778 Senegal .....	15	25
193 <i>merleti</i> PIERSON, 1975 New Cal. ....	150	200
194 <i>miles</i> LINNAEUS, 1758 Polynesia .....	4	6
195 <i>miliaris</i> HWASS, 1792 Zanzibar; Thaiti .....	1	5
196 <i>milneedwardsi</i> JOUSSEAUME, 1894 India .....	350	600
197 <i>minnamurra</i> GARRARD, 1961 Capricorn I. ....	25	50
198 <i>mitratus</i> HWASS, 1792 Solomon I. ....	15	25
199 <i>moluccensis</i> KUESTER, 1838 Phil. I. ....	85	100
200 <i>monachus</i> LINNAEUS, 1758 Dampier Arch. ....	3	6
201 <i>m. f. infumata</i> DAUTZENBERG, 1937 Nicobares	8	25
202 <i>monile</i> HWASS, 1792 India .....	8	25
203 <i>m. albin. f.</i> HWASS, 1792 India .....	15	20
204 <i>m., freak</i> HWASS, 1792 Laccadives .....	30	40
205 <i>mozambicus</i> HWASS, 1792 South Africa .....	35	45
206 <i>mucronatus</i> REEVE, 1843 Solomon I. ....	5	10
207 <i>muriculatus</i> SOWERBY, 1833 Philippines .....	20	50
208 <i>mus</i> HWASS, 1792 Florida .....	2	5
209 <i>musicus</i> HWASS, 1792 Florida .....	2	3
210 <i>mutabilis</i> REEVE, 1844 India .....	8	10
211 <i>namocanus</i> HWASS, 1792 Tanzania .....	3	5
212 <i>nanus</i> SOWERBY, 1833 West Austr. ....	2	5
213 <i>natalis</i> SOWERBY, 1857 Natal .....	10	25
214 <i>nicobaricus</i> HWASS, 1792 Philippines .....	5	15
215 <i>nigrescens</i> SOWERBY, 1859 Samoa .....	25	40
216 <i>nigropunctatus</i> SOWERBY, 1858 Red Sea .....	4	15
217 <i>nimbosus</i> HWASS, 1792 India .....	25	40
218 <i>n. dark f.</i> HWASS, 1792 Vanuatu .....	40	50
219 <i>nobilis</i> LINNAEUS, 1758 P.I. ....	12	20
220 <i>nodulosus</i> SOWERBY, 1864 West Australia ....	35	45
221 <i>novaehollandiae</i> A. ADAMS, 1854 West Australia	2	4
222 <i>nussatella</i> LINNAEUS, 1758 Seychelles; P.I. ....	5	10





49	<i>borbonicus</i>	H. ADAMS, 1868	Thaiti	5	7
50	<i>boschi</i>	CLOVER, 1972	Phil. I.	10	15
51	<i>boschi</i>	CLOVER, 1972	Oman	15	30
52	<i>brunneus</i>	WOOD, 1828	Mexico, Panama	5	7
53	<i>brunneus</i>	WOOD, 1828	Galapagos I.	8	12
54	<i>bullatus</i>	LINNAEUS, 1758	Solomon I.	60	125
55	<i>bullatus</i>	LINNAEUS, 1758	New Ireland	125	225
56	<i>b. articulatus</i>	DAUTZENBERG, 1937	Reunion I.	120	180
57	<i>cabritii</i>	BERNARDI, 1858	New Caledonia	12	25
58	<i>cancellatus</i>	HWASS, 1792	Formosa	5	8
59	<i>canonicus</i>	HWASS, 1792	Tahiti	5	12
60	<i>characteristicus</i>	FISCHER, 1807	Phil. I.	5	10
61	<i>carinatus</i>	SWAINSON, 1822	Phil. I.	2	5
62	<i>castaneofasciatus</i>	DAUTZENBERG, 1937	India	20	40
63	<i>catus</i>	HWASS, 1792	Seychelles I.	3	5
64	<i>c. fusco-oliv.</i>	DAUTZENBERG, 1937	Marquesas I.	5	8
65	<i>c. rubro-papil.</i>	DAUTZENBERG, 1937	Marques. I.	8	10
66	<i>cedonulli</i>	LINNAEUS, 1767	Venezuela	70	135
67	<i>cedonulli</i>	LINNAEUS, 1767	St. Vincent	200	235
68	<i>cervus</i>	LAMARCK, 1822	Phil.	P.O.R.	
69	<i>ceylanensis</i>	HWASS, 1792	New Caledonia	5	7
70	<i>chaldeus</i>	ROEDING, 1798	P.I.: Tahiti	3	5
71	<i>cholmondeleyi</i>	MELVILL, 1900	Mozambique	25	30
72	<i>chusaki</i>	DA MOTTA, Thailand		60	70
73	<i>cinereus</i>	HWASS, 1792	Phil.	5	8
74	<i>cingulatus</i>	LAMARCK, 1810	India	25	30
75	<i>circumactus</i>	IREDALE, 1929	Sulu Arc.	50	80
76	<i>circumcisis</i>	BORN, 1778	Phil. I.	65	100
77	<i>clarus</i>	E. A. SMITH, 1881	Onslow, W.A.	15	35
78	<i>clerti</i>	REEVE, 1844	Brazil	40	50
79	<i>classarius</i>	HWASS, 1792	Sudan	5	10
80	<i>coceus</i>	REEVE, 1844	W. Australia	16	18
81	<i>c. white f.</i>	REEVE, 1844	Albany, W.A.	20	50
82	<i>c. pink f.</i>	REEVE, 1844	Albany, W.A.	25	35
83	<i>coccineus</i>	GMELIN, 1791	P.I. Seychelles I.	20	40
84	<i>collisus</i>	REEVE, 1849	Thailand	10	12
85	<i>compressus</i>	SOWERBY, 1866	S. Australia	12	18
86	<i>consors</i>	SOWERBY, 1833	Philippines I.	8	10
87	<i>conspersus</i>	REEVE, 1844	Philippines I.	15	20
88	<i>corallinus</i>	KIENER, 1845	Philippines I.	20	30
89	<i>coronatus</i>	GMELIN, 1791	Tahiti	2	3
90	<i>couderti</i>	BERNARDI, 1860	West Indies	95	120
91	<i>crocatus</i>	LAMARCK, 1810	Solomon I.	70	150
92	<i>crosseanus</i>	BERNARDI, 1861	New Caledonia	25	40
93	<i>cumingii</i>	REEVE, 1848	Solomon I.	30	50
94	<i>cuneolus</i>	REEVE, 1843	Cape Verde I.	30	50
95	<i>cuvieri</i>	CROSSE, 1858	Sudan	30	50
96	<i>dalli</i>	STEARNS, 1873	Panama	16	25
97	<i>daphne</i>	BOIVIN, 1864	Philippines I.	18	25
98	<i>daucus</i>	HWASS, 1792	Florida	10	18
99	<i>daullei</i>	CROSSE, 1858	Philippines I.	8	10
100	<i>delessertii</i>	RECLUZ, 1843	Florida	10	20
101	<i>diadema</i>	SOWERBY, 1834	California	7	10
102	<i>dilectus</i>	A.A. GOULD, 1850	Solomon I.	100	130
103	<i>distans</i>	HWASS, 1792	G.B.R.	8	20
104	<i>dorreensis</i>	PERON, 1807	West Australia	6	10
105	<i>dusaveli</i>	H. ADAMS, 1872	Balut I.	300	500
106	<i>ebraeus</i>	LINNAEUS, 1758	N. S. Wales; Okinawa	2	5





# THE CONNOISSEUR *of seashells*

PER LO SPECIALISTA IN CONCHIGLIE



POUR LE CONNAISSEUR DE COQUILLAGES



*Nesiocypraea teramachii*  
KURODA, 1938

RACCOLTA VIVA

GEM

LIVE COLLECTED

3

4

MAY - JULY  
MAGGIO - LUGLIO 1985

**GEMME del MARE**

P.O. BOX 561 • ROMA 00187 (ITALY)



	Locality	Length	C B/Fair	B Gd/Fine-	A F/Gem
19B - <i>Mauritia (Arabica) arabica immanis</i> SCHIL.-SCHIL., 1939	S.E. Africa	66-75	5.00	10.00	20.00
19Ba - forma <i>maxima</i> .....	S.E. Africa	76-80	12.50	25.00	50.00
RANGE: S.E. Africa      SINONIMS: <i>nuzaromatica</i> HUMPHREY, 1797 - <i>typica</i> SMITH, 1903 - <i>splendens</i> GYNGELL, 1924.					
20 <i>Mauritia (Arabica) depressa depressa</i> GRAY, 1824 .....	Pacific	35-42	0.75	1.50	3.00
20a - forma <i>gillei</i> (JOU., 1893) .....	Polynesia	30-40	1.50	3.00	6.00
20b - forma <i>juvenis</i> .....	Pacific	35-42	1.50	3.00	6.00
20c - forma <i>deformis</i> .....	Pacific	35-42	5.00	10.00	20.00
20A - <i>Mauritia (Arabica) depressa dispersa</i> SCH.-SCH., 1939	Indian	35-42	1.00	2.00	4.00
20Aa - forma <i>hypercallosa</i> (RAY., 1984) .....	Indian	35-42	2.50	5.00	10.00
RANGE: Indo-Pacif      SYNONIMS: none					
21 <i>Mauritia (Arabica) eglantina</i> DUCLOS, 1833 .....	C. Pacif.	45-60	0.50	1.00	2.00
21a - forma <i>pallida</i> (DAU., 1903) .....	Indo-Pacif.	45-60	2.50	5.00	10.00
21b - forma <i>aurea</i> (COEN, 1949) .....	Indo-Pacif.	45-60	10.00	20.00	40.00
21c - forma <i>rufa</i> (COEN, 1949) .....	Indo-Pacif.	45-60	10.00	20.00	40.00
21d - forma <i>griseo-viridis</i> (RAY., 1977) .....	Indo Pacif.	45-60	5.00	10.00	15.00
21e - forma <i>perconfusa</i> (IRE., 1935) .....	W. Austr.	45-60	1.00	2.00	4.00
21f - forma <i>couturieri</i> (VAY., 1905) .....	W. Pacific.	45-60	0.50	1.00	2.00
21g - forma <i>monokiti</i> (ST.-CO., 1943) .....	Fiji	45-60	1.00	2.00	4.00
21h - forma <i>nigricans</i> (CRO., 1869) .....	N. Caled.	45-60	7.50	15.00	30.00
21i - forma <i>niger</i> (ROB., 1885) .....	N. Caled.	45-60	30.00	60.00	120.00
21l - forma <i>nigerrima</i> (RAY., 1984) .....	N. Caled.	45-60	80.00	165.00	325.00
21m - forma <i>rostrata</i> (RAY., 1984) .....	N. Caled.	45-60	50.00	100.00	200.00
21n - forma <i>hyperrostrata</i> (RAY., 1984) .....	N. Caled.	45-60	75.00	150.00	300.00



21o - forma <i>rostratissima</i> (RAY., 1984) .....	N. Caled.	45-60	110.00	225.00	450.00
21p - forma <i>juvenis</i> .....	Indo-Pacif.	45-60	1.50	3.00	6.00
21q - forma <i>deformis</i> .....	Indo-Pacif.	45-60	5.00	10.00	20.00

RANGE: E. Indian - Pacif.

SYNONIMS: *elegantina* MENKE, 1843 - *luctuosa* DAUTZENBERG, 1903 - *lakemba* e *lakenbaensis* LADD, 1945 - *monokiti* ALLAN, 1956.



*Genus acclarandum*

*bernardi* RICHARD, 1974



**DIAGNOSI:** forma ovale o leggermente piriforme; estremità poco accentuate; apertura stretta e leggermente arcuata; fossula con 3-4 denticoli; bordi callosi elevati bianchi; dorso di colore da giallo ad arancio scuro con «gocce» bianche di diametro diverso; quasi sempre presenti la linea del mantello e due caratteristiche nuvolesità biancastre; animale di color rosa-carnicino.

Lunghezza minima e massima a me note: 10-12 mm.

**DIAGNOSIS:** oval, slightly pyriform shape; slightly pronounced tips; narrow aperture, slightly curved, with 3-4 fossula's denticles; high, callous white sides; dorsum's background yellow to dark orange maculated with white drops, different in diameter; dorsal line almost present; two typical whitish cloudiness on the dorsum; pink flesh coloured animal.

Minimum and maximum length known to me: mm. 10-12.

**CATALOGO**

**CATALOGUE**

<i>bernardi</i> RICHARD, 1974	.....	GEM	FINE	GOOD	FAIR
<i>f. typica</i> (yellow-orange) mm. 10-11	.....	—	1300	500	250
<i>f. saturata</i> (dark orange) mm. 10-11	.....	—	1500	600	300
<i>f. major</i> mm. 12	.....	—	1500	600	250

Gli esemplari perfetti sono per ora estremamente rari.

Gem specimens are extremely rare for now.

**HABITAT:** dentro ai coralli in acque basse (2-10 metri)  
**AREA:** Costa orientale di Tahiti  
**IL NOME SIGNIFICA:** ciprea di Bernard

**HABITAT:** under corals in shallow water (2-10 meters)  
**AREA:** Eastern coast of Tahiti  
**THE NAME MEANS:** Bernard's cowrie





<b>299</b>	<i>Zoila (Zoila) venusta roseopunctata</i> MELVILL, 1888 (66,5) Esper. gem .....	550.00
<b>300</b>	<i>Zoila (Zoila) venusta thatcheri</i> COX, 1869 (67) Jurien B. gem .....	450.00
<b>301</b>	<i>Zoila (Zoila) venusta thatcheri</i> COX, 1869 (67) Jurien B. fine .....	300.00
<b>302</b>	<i>Zoila (Zoila) venusta venusta</i> G. B. SOWERBY II, 1846 (72,5) f. <i>saturata</i> Albany: gem .....	300.00
<b>303</b>	<i>Zoila (Zoila) venusta roseodorata</i> (RAY, 1984) (69) Esper., rare, gem .....	750.00
<b>304</b>	<i>Zoila (Zoila) venusta roseopunctata</i> MELVILL, 1888 (77) Esper. fine+ .....	450.00
<b>305</b>	<i>Zoila (Zoila) venusta</i> IREDALE, 1939 (70) W.A. special, gem .....	1,000.00
<b>306</b>	<i>Zoila (Zoila) vercoi contraria</i> IREDALE, 1935 (75) G.A.B. gem .....	750.00
<b>307</b>	<i>Mauritia (Leporicypraea) valentia</i> PERRY, 1811 (97) Philip.: very large, fine-gem .....	1,500.00
<b>308</b>	<i>Lyncina (Mystaponda) leucodon angioyna</i> RAYBAUDI, 1979 (94) Philip.: very large, fine .....	P.o.r.
<b>309</b>	<i>Lyncina (Mystaponda) leucodon angioyna</i> RAYBAUDI, 1979 (84) P.I.: dark supergem .....	P.o.r.





Familia Trochidae RAFINESQUE, 1815

<b>278</b>	<i>Angaria sphaerula</i> KIENER, 1839 (60 w/o) Philippines: fine+ .....	95.00
<b>279</b>	<i>Angaria vicdani</i> KOSUGE, 1980 (76 w/o) Balut I. (P.I.): fine+ .....	100.00

Familia Turbinidae RAFINESQUE, 1815

<b>280</b>	<i>Astraea (Bolma) girgyllus</i> REEVE, 1861 f. <i>flava</i> (65 w/o) Balut I. (P.I.): fine+ .....	60.00
<b>281</b>	<i>Astraea (Bolma) girgyllus</i> REEVE, 1861 f. <i>rosea</i> (76) Balut I. (P.I.): fine+ .....	60.00

Familia Epitoniidae S. S. BERRY, 1910

<b>282</b>	<i>Amaea (Elagantiscala) rugosum</i> KURODA-ITO, 1961 (60) Shikoku (Japan): fine+ .....	100.00
<b>283</b>	<i>Epitonium celesti</i> ARADAS, 1854 (22) Italy: fine+ .....	60.00

Familia Strombidae RAFINESQUE, 1815

<b>284</b>	<i>Strombus (Canarium) haemastoma haemastoma</i> SOWERBY, 1842 (14) Marshall I.: gem .....	75.00
<b>285</b>	<i>Strombus (Dolomena) kleckamae boholensis</i> MUEHLHAUCESSER, 1982 (70) Bohol (P.I.) gem .....	90.00
<b>286</b>	<i>Strombus (Tricornis) goliath</i> SCHROETER, 1805 (345 w/o) Brazil: gem .....	180.00
<b>287</b>	<i>Lambis (Lambis) crocata pilsbryi</i> ABBOTT, 1961 (175) Marquesas I.: rare gem .....	150.00
<b>288</b>	<i>Lambis (Lambis) violacea</i> SWAINSON, 1821 (108-125) Mauritius: gem .....	150.00
<b>289</b>	<i>Lambis (Lambis) wheelwrighti</i> GREENE, 1978 (183) Davao (P.I.): fine+ .....	85.00



Familia Cipraeidae RAFINESQUE, 1815

<b>290</b>	<i>Siphocypraea (Muracipraea) mus donmoorei</i> PETUCH, 1979 (55) Carib. gem .....	120.00
<b>291</b>	<i>Zoila (Zoila) jeaniana jeaniana</i> CATE, 1968 (77) W.A. fine+ .....	350.00
<b>292</b>	<i>Zoila (Zoila) jeaniana aurata</i> RAYBAUDI, 1979 (74,5) f. <i>hypercallosa</i> , W.A. gem .....	300.00
<b>293</b>	<i>Zoila (Zoila) jeaniana aurata</i> RAYBAUDI, 1979 (87,5) f. <i>pyriformis</i> , W.A. fine+ .....	285.00
<b>294</b>	<i>Zoila (Zoila) jeaniana aurata</i> RAYBAUDI, 1979 (91) f. <i>major</i> , W.A. fine+ .....	375.00
<b>295</b>	<i>Zoila (Zoila) jeaniana aurata</i> RAYBAUDI, 1979 (83) f. <i>lineata</i> , W.A. fine+ .....	300.00
<b>296</b>	<i>Zoila (Zoila) jeaniana aurata</i> RAYBAUDI, 1979 (71,5) f. <i>aureabasis</i> , W.A. fine .....	325.00
<b>297</b>	<i>Zoila (Zoila) marginata albanensis</i> RAYBAUDI, 1984 (63) Albany fine .....	150.00
<b>297A</b>	<i>Zoila (Zoila) marginata albanensis</i> RAYBAUDI, 1984 (71) Albany fine .....	180.00
<b>298</b>	<i>Zoila (Zoila) venusta catei</i> , f. <i>armeniaca</i> (RAY, 1984) (68,5) W. Austr. gem .....	650.00





392

382

390

383

397

395

394

400

388

386

391

396



387



399

385

398

384



# THE CONNOISSEUR *of seashells*

PER LO SPECIALISTA IN CONCHIGLIE ● POUR LE CONNAISSEUR DE COQUILLAGES



*Conus excelsus*  
SOWERBY, 1908

RACCOLTO VIVO

GEM

LIVE COLLECTED

5

SEPTEMBER  
SETTEMBRE 1985

GEMME del MARE

P.O. BOX 561 • ROMA 00187 (ITALY)



122 *martini*  
 123 *maurus*  
 124 *melanamatous*  
 125 *microphillus*

- *Mureziella* (*Mureziella*) -  
 - *Chicoreus* (*Chicoreus*) -  
 - *Homalocantha* -  
 - *Chicoreus* (*Chicoreus*) -

SHIKAMA, 1977 (18-20) bicolor (P.I.) ..... 25 30  
 BRODERIP, 1833 (68-87) w/o Marquesas ..... 15 30  
 GMELIN, 1791 (30-40) w/o Gabon ..... 45 55  
 LAMARCK, 1816 (54-58) Solomon I. .... 8 12



111 *mindanaoensis*  
 112 *miyokoeae*  
 113 *multiplicatus*  
 114 *nigrospinosus*  
 115 *nitida*  
 116 *nuttalli*  
 117 *orchidifloris*  
 118 *oxyacantha*  
 119 *oxyacantha*  
 120 *palmarosae*  
 121 *pecten*  
 122 *pelepilli*  
 - *A. pelepilli*  
 123 *pellucidus*  
 124 *penchinati*  
 125 *penchinati*  
 126 *peregrina*  
 127 *perelegans*  
 128 *phillopterus*  
 129 *phillopterus*  
 130 *phillopterus*  
 131 *phillopterus*  
 132 *pinnatus*  
 133 *pinniger*  
 134 *pliciferoides*

- *Murex* (*Murex*) -  
 - *Pterynotus* (*Pterynotus*) -  
 - *Murex* (*Haustellum*) -  
 - *Murex* (*Murex*) -  
 - *Eupleura* -  
 - *Jaton* (*Ceratostoma*) -  
 - *Pterynotus* (*Pterynotus*) -  
 - *Homalocantha* -  
 - *Homalocantha* -  
 - *Chicoreus* (*Chicoreus*) -  
 - *Murex* (*Murex*) -  
 - *Favartia* (*Favartia*) -  
 - *Favartia* (*Favartia*) -  
 - *Pterynotus* (*Marchia*) -  
 - *Chicoreus* (*Chicoreus*) -  
 - *Chicoreus* (*Chicoreus*) -  
 - *Mureziella* (*Mureziella*) -  
 - *Murex* (*Stratus*) -  
 - *Pterynotus* (*Pterynotus*) -  
 - *Pterynotus* (*Pterynotus*) -  
 - *Pterynotus* (*Pterynotus*) -  
 - *Pterynotus* (*Pterynotus*) -  
 - *Pterynotus* (*Pterynotus*) -  
 - *Pterynotus* (*Purplellus*) -  
 - *Murex* (*Stratus*) -

SOWERBY, 1841 (74-90) Philippines ..... 16 20  
 KOSUGE, 1979 (45-74) Philippines ..... 95 400  
 SOWERBY, 1895 (46-52) w/o Weld Isl. (W.A.) ..... 30 45  
 REEVE, 1845 (68-70) Philippines ..... 2 5  
 BRODERIP, 1833 (23-25) Panama ..... 4 6  
 CONRAD, 1837 (50-54) w/o California ..... 10 12  
 SHIKAMA, 1973 (34-48) Philippines ..... 60 180  
 BRODERIP, 1833 (44-46) w/o Mexico ..... 6 10  
 DALL, 1918 (43-47) w/o *stearnsi* f. Panama ..... 8 10  
 LAMARCK, 1822 (92-114) w/o India ..... 18 25  
 LIGHTFOOT, 1786 (129-149) w/o Philippines ..... 10 25  
 D'ATTILIO-BERTCH, 1980 (19-22) Philippines ..... 30 40  
 D'ATTILIO-BERTCH, 1980 (26-28) orange (P.I.) ..... 35 50  
 REEVE, 1845 (35-42) w/o Philippines ..... 15 25  
 CROSSE, 1861 (27-44) Sulu (P.I.) ..... 4 6  
 CROSSE, 1861 (21-32) white, brown f. Sulu (P.I.) ..... 6 9  
 OLIVERA, 1980 (12-13) Mactan I. (P.I.) ..... 30 35  
 VOKES, 1965 (54-72) w/o Guadeloupe ..... 35 50  
 LAMARCK, 1822 (54-62) brown f. Antilles ..... 200 300  
 LAMARCK, 1822 (49-52) w/o pink f. Antilles ..... 200 250  
 LAMARCK, 1822 (49-59) yellow f. Antilles ..... 250 300  
 LAMARCK, 1822 (62-65) w/o rare albin. f. (Ant.) ..... 250 400  
 SWAINSON, 1822 (52-81) w/o Philippines ..... 5 15  
 BRODERIP, 1833 (35-42) w/o W. Mexico ..... 80 90  
 KURODA, 1942 (78-84) fine Japan ..... 4 6











# THE CONNOISSEUR *of seashells*

PER LO SPECIALISTA IN CONCHIGLIE • POUR LE CONNAISSEUR DE COQUILLAGES



*Cypraeovula (Luponia) coronata* SCHILDER, 1930

*Erronea (Adusta) barclayi* REEVE, 1857

UN INCONTRO  
IR RIPETIBILE

AN EXCEPTIONAL  
MEETING

6

NOVEMBER  
NOVEMBRE

1985

GEMME del MARE

P.O. BOX 561 • ROMA 00187 (ITALY)

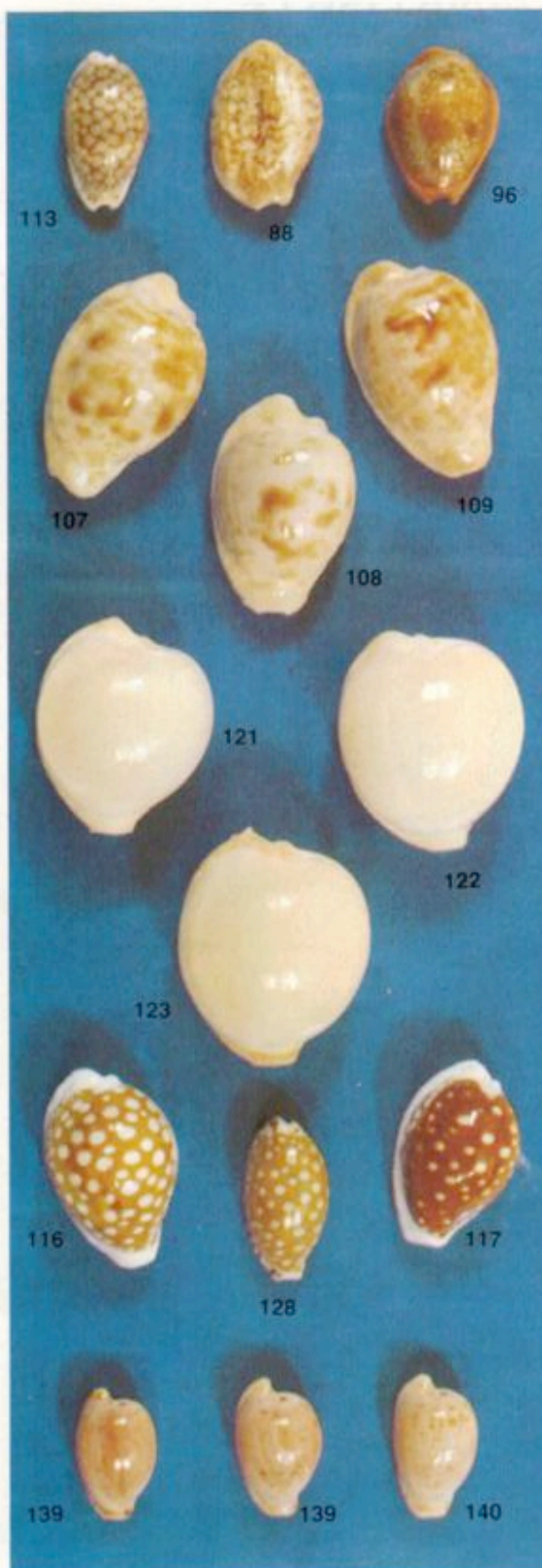


	U.S. \$
V. 204	<i>hesitata f. major</i> (95-102) S. E. Austr., gem ..... 15
V. 205	<i>hesitata howelli</i> (75-95) S. E. Austr., gem ..... 48
V. 206	<i>hesitata beddomei</i> (67-74) S. E. Austr., gem ..... 12
V. 207	<i>hesitata beddomei f. albina</i> (65-74) S. E. Austr., gem ..... 90
V. 208	<i>hesitata nordica</i> (65-75) Queensland, fine-gem ..... 65
V. 209	<i>hirasei</i> (45-49) China Sea, gem ..... 800
V. 210	<i>hirasei f. minima</i> (32-37) China Sea, rare, extra ..... 600
V. 211	<i>hirasei f. major</i> (49-52) China Sea, extra ..... 850
V. 212	<i>hirasei f. philippina</i> (50-55) P. I., extra ..... P.o.r.
V. 213	<i>hirundo francisca</i> (15-17) Seychelles I., fine + ..... 15
V. 214	<i>hirundo francisca</i> (15-17) Seychelles I., gem ..... 22
V. 215	<i>histrion westralis</i> (45-52) N. W. Austr., fine + ..... 15
V. 216	<i>histrion westralis</i> (45-60) N. W. Austr., gem ..... 25
V. 217	<i>humphreysii</i> (13-20) Melanesia, gem ..... 7
V. 218	<i>humphreysii f. yaloka</i> (13-15) Fiji I., gem ..... 7
V. 219	<i>hungerfordi hungerfordi</i> (27-30) China Sea, gem ..... 15
V. 220	<i>hungerfordi f. callosa</i> (31-35) N. E. Taiwan, gem ..... 18
V. 221	<i>hungerfordi coucomi</i> (32-35) Queensland, gem ..... 85
V. 222	<i>hungerfordi coucomi</i> (36-42) Queensland, gem ..... 150
V. 223	<i>interrupta</i> (17-18) E. Indian, 3 diff., gem ..... 12
V. 224	<i>irrorata</i> (9-14) Polynesia, gem ..... 10
V. 225	<i>isabella</i> (12-40) Indo-Pacif., 10 diff., gem ..... 330
V. 226	<i>jeaniana</i> (65-75) W. Austr., fine + ..... 225
V. 227	<i>jeaniana f. melanica</i> (65-75) W. Austr., fine + ..... 350
V. 228	<i>jeaniana aurata</i> (60-70) N. W. Austr., fine + ..... 225
V. 229	<i>jeaniana aurata</i> (60-70) N. W. Austr., gem ..... 300
V. 230	<i>jeaniana aurata</i> (65-80) N. W. Austr., extra ..... 400
V. 231	<i>katsuae</i> (20-22) China Sea, rare, gem ..... P.o.r.
V. 232	<i>katsuae</i> (18-19) P. I., very rare, gem ..... P.o.r.
V. 233	<i>kieneri</i> (12-20) Indo-Pacif., 5 diff., gem ..... 10
V. 234	<i>kingae</i> (10,5) Pitcairn I., very rare, fine ..... P.o.r.
V. 235	<i>kuroharai</i> (41-42) China Sea, fine ..... 600
V. 236	<i>kuroharai</i> (47) China Sea, (rarely perfect), extra ..... 1.200
V. 237	<i>lamarekii</i> (21-45) Indian, 5 diff., gem ..... 15
V. 238	<i>langfordi</i> (46-55) China Sea, gem ..... 1.100
V. 239	<i>langfordi f. philippina</i> (59) P. I., giant gem ..... P.o.r.
V. 240	<i>langfordi moretonensis</i> (58-58) Queensland, gem ..... P.o.r.
V. 241	<i>lentiginosa lentiginosa</i> (23-35) India, 2 diff., gem ..... 10
V. 242	<i>lentiginosa f. danalica</i> (21-25) Red Sea, gem ..... 15
V. 243	<i>leucodon angioyna</i> (84-85) P. I., fine + ..... 3.000
V. 244	<i>leucodon angioyna</i> (84,5) P. I., gem ..... P.o.r.
V. 245	<i>leucodon angioyna f. saturata</i> (84) P. I., gem ..... P.o.r.
V. 246	<i>leviathan</i> (47-52) Hawaii, gem ..... 20
V. 247	<i>leviathan</i> (53-60) Hawaii, gem ..... 35
V. 248	<i>leviathan</i> (61-70) Hawaii, rare, gem ..... 50
V. 249	<i>lisetae</i> (12) Natal, very rare, fine ..... P.o.r.
V. 250	<i>lisetae</i> (13) Natal, very rare, gem ..... P.o.r.
V. 251	<i>luchuana</i> (subsp. <i>pallidula</i> ?) (17-20) Okinawa, gem ..... 7
V. 252	<i>lurida lurida</i> (16-58) Medit., 5 diff., fine + ..... 12
V. 253	<i>lurida oceanica</i> (25-30) W. Africa, gem ..... 20
V. 254	<i>lurida oceanica</i> (25-30) Ascension I., fine + ..... 32
V. 255	<i>lutea</i> (15-23) W. Pacif., 4 diff., gem ..... 8
V. 256	<i>lutea bizonata</i> (16-20) N. W. Austr., gem ..... 6
V. 257	<i>lutea bizonata f. profunda</i> (10-16) N. W. Austr., rare, gem ..... 12
V. 258	<i>macandrewi</i> (14-16) Red Sea, gem ..... 100
V. 259	<i>macandrewi f. major</i> (17-18) Red Sea, gem ..... 125
V. 260	<i>macandrewi f. maxima</i> (19-21) Red Sea, gem ..... 150
V. 261	<i>macandrewi f. eguttata</i> (14-17) Red Sea, gem ..... 200
V. 262	<i>maculifera</i> (20-50) Polynesia, 3 diff., gem ..... 15
V. 263	<i>maculifera f. major</i> (55-60) Polynesia, gem ..... 10
V. 264	<i>maculifera f. hawaiiensis</i> (40-65), fine + ..... 10
V. 265	<i>maculifera f. hawaiiensis maxima</i> (65-80), fine-gem ..... 30
V. 266	<i>mappa mappa</i> (45-80) Indo-Pacif., 10 diff., extra series ..... 100
V. 267	<i>mappa f. rosea</i> (65-80) W. Pacif., gem ..... 10
V. 268	<i>mappa f. panerythra</i> (65-80) W. Pacif., gem ..... 65
V. 269	<i>mappa alga</i> (65-80) E. Africa, gem ..... 15
V. 270	<i>mappa geographica</i> (48-55) Andaman, gem ..... 18
V. 271	<i>mappa vitridis</i> (55-65) C. Pacif., gem ..... 26





	U.S. \$
V. 68	<i>cernica cernica</i> (20-22) Reunion, gem ..... 20
V. 69	<i>cernica viridicolor</i> (20-23) W. Australia, gem ..... 20
V. 70	<i>cernica viridicolor f. major</i> (27) W. Austr. fine + .... 50
V. 71	<i>cernica ogasawarensis</i> (22-24) Okinawa, gem ..... 30
V. 72	<i>cernica ogasawarensis</i> (25) Okinawa, extra ..... 40
V. 73	<i>cernica marielae</i> (23-27) Hawaii, very rare, gem ..... 125
V. 74	<i>cernica tomlini</i> (25) Queensland deep w., rare, gem ..... 45
V. 75	<i>cernica f. prodiga</i> (25) N.S.W. very rare, gem ..... 75
V. 76	<i>cervinetta f. minima</i> (28-30) Panama, gem ..... 20
V. 77	<i>cervinetta f. galapagensis</i> (40-55) Galap., gem ..... 75
V. 78	<i>cervus cervus</i> (70-90) Florida, gem ..... 20
V. 79	<i>cervus cervus</i> (91-100) Florida, gem ..... 25
V. 80	<i>cervus cervus</i> (101-105) Florida, gem ..... 35
V. 81	<i>cervus cervus</i> (106-115) Florida, gem ..... 40
V. 82	<i>cervus cervus</i> (101-115) Florida, special, gem ..... 90
V. 83	<i>childreni childreni</i> (12-18) Marshall, good B ..... 10
V. 84	<i>childreni f. lemurica</i> (12-18) Indian, good B ..... 15
V. 85	<i>childreni novaecaledoniae</i> (14-22) very good B ..... 30
V. 86	<i>childreni f. samurai</i> (12-18) good B ..... 18
V. 87	<i>chinensis tortirostris</i> (23-26) juv., rare ..... 40
V. 88	<i>chinensis tortirostris</i> (22,5) freak, live, very rare ..... 80
V. 89	<i>chinensis amigae</i> (23-30) Hawaii, gem ..... 30
V. 90	<i>chinensis whitworthi</i> (39-43) W. Austr., gem ..... 20
V. 91	<i>cinerea</i> (21-27) Florida, gem ..... 8
V. 92	<i>cinerea</i> (25-32) Caribbean, gem ..... 12
V. 93	<i>citrina</i> , deep w. f. (20-23) Natal, ex pisce ..... 30
V. 94	<i>citrina</i> , deep w. f. (20-23) Natal, ex pisce, fine ..... 45
V. 95	<i>citrina</i> , shallow w. f. (20-23) Natal, ex pisce, fine ..... 35
V. 96	<i>citrina</i> , shallow w. f. (20-22) Natal, live t., gem ..... 175
V. 97	<i>coloba coloba</i> (24) Laccadives I., gem ..... 40
V. 98	<i>coloba coloba</i> (28) Pakistan, rare, gem ..... 80
V. 99	<i>coloba greegori</i> (25-28) Andam., gem ..... 16
V. 100	<i>comptoni</i> (18-21) Esperance, gem ..... 8
V. 101	<i>comptoni f. trenberthae</i> (18-20) Sir J. Bank, gem ..... 10
V. 102	<i>comptoni casta</i> (23-24) P. Mc. Donnell, gem ..... 37
V. 103	<i>comptoni mayi</i> (22-25) P. Mc Donnell, gem ..... 10
V. 104	<i>contaminata contam.</i> (10-13) W. Pacif., gem ..... 18
V. 105	<i>contaminata distans</i> (10-12) Natal, gem ..... 30
V. 106	<i>contaminata malaysiae</i> (10-12) Andaman, gem ..... 17
V. 107	<i>coronata</i> (32) Cape Peninsula, rare fine + ..... 450
V. 108	<i>coronata</i> (31) Cape Peninsula, rare fine + ..... 450
V. 109	<i>coronata</i> (29,5) Cape Peninsula, rare fine + ..... 450
V. 110	<i>coronata</i> (32) Cape Peninsula, rare gem ..... P.o.r.
V. 111	<i>cribellum</i> (16-18) Mauritius, gem ..... 20
V. 112	<i>cribellum</i> (19-20) Mauritius, gem ..... 32
V. 113	<i>cribellum f. major</i> (21-22) Mauritius, gem ..... 60
V. 114	<i>cribraria fallax</i> (16-21) West Austr., gem ..... 15
V. 115	<i>cribraria fallax</i> dark (18-22) Broome, gem ..... 25
V. 116	<i>cribraria f. globosa</i> (24-33) Rottneest, rare gem ..... 65
V. 117	<i>cribraria exmouthensis</i> (26-35) very dark, very rare ..... P.o.r.
V. 118	<i>cribraria zadela</i> (20-24) Queensland, gem ..... 10
V. 119	<i>cribraria zadela f. melwardi</i> (19-22) Queensl., fine-gem ..... 30
V. 120	<i>cribraria zadela f. semicolorata</i> (20-25) Queensland, gem ..... 20
V. 121	<i>cruickshanki</i> (28) Natal, rare gem ..... 1,000
V. 122	<i>cruickshanki</i> (28) Natal, rare extra ..... P.o.r.
V. 123	<i>cruickshanki</i> (29) Natal, rare gem ..... P.o.r.
V. 124	<i>cumingii cumingii</i> (13-15) Tahiti, gem ..... 40
V. 125	<i>cumingii cumingii f. minima</i> (9-12) Tahiti, gem ..... 30
V. 126	<i>cumingii cumingii f. major</i> (15,5-17) Tahiti, gem ..... 60
V. 127	<i>cumingii cumingii f. marima</i> (19-20) Tahiti, gem ..... 120
V. 128	<i>cumingii cleopatra</i> (22,5) Tahiti, rare gem ..... 380
V. 129	<i>decepiens</i> (48-55) N. W. Australia, gem ..... 12
V. 130	<i>decepiens f. melanica</i> (48-55) N. W. Australia, gem ..... 18
V. 131	<i>declivis</i> (19-24) South Australia, fine-gem ..... 35
V. 132	<i>dillwyni</i> (10-12) Polynesia, good B ..... 40
V. 133	<i>dillwyni</i> (10-12) Micronesia, rare gem ..... 125
V. 134	<i>diluculum f. major</i> (26-32) Somal., gem ..... 4
V. 135	<i>diluculum virginalis</i> (10-15) W. Indian, gem ..... 7





VETRINA DI NATALE

	U.S. \$
V. 123 <i>mercator</i> , three diff. patterns, Senegal, .....	30
V. 124 <i>mercator, reticulata</i> f. three diff. Goorea, .....	45
V. 125 <i>milneedwardsi</i> , (64-70) India, fine-gem .....	250
V. 126 <i>mindanus</i> , pale f. (20-21) Bermuda, gem .....	18
V. 127 <i>mindanus</i> , blotched f. (22) Martinique, gem ....	50
V. 128 <i>minnamurra</i> , (30-34) Queensland, gem .....	45
V. 129 <i>moluccensis</i> , (44) Philippines, gem .....	100
V. 130 <i>moluccensis, merleti</i> f. (49-54) N. Cal., gem .....	120
V. 131 <i>moluccensis, merleti</i> granulat. f. (51) N. Cal. extra	140
V. 132 <i>moluccensis, stainforthi</i> f. (40-49) P.N.G., gem .	90
V. 133 <i>moluccensis</i> , couple of two subspecies, choice .	190
V. 134 <i>neptunus</i> , (65-70) Philippines, gem .....	75
V. 135 <i>nimbosus</i> , dark f. (40-42) Tuamotu, gem .....	30
V. 136 <i>nobilis</i> , sp. brown f. (40) India, fine + .....	40
V. 137 <i>optimus</i> , (36-38) New Caledonia, fine + .....	60
V. 138 <i>optimus</i> , (42) New Caledonia, gem .....	90
V. 139 <i>orion</i> , (26-28) Panama, extra .....	35
V. 140 <i>orion</i> , three diff. patterns, Pan., choice .....	95
V. 141 <i>otohimeae</i> , (25) Okinawa, gem .....	75
V. 142 <i>paulucciae</i> , (54) Reunion, fine + .....	250
V. 143 <i>paulucciae</i> , (50-56) Reunion, extra .....	300
V. 144 <i>pertusus</i> , (48-52) Philippines, fine + .....	45
V. 145 <i>pertusus, festivus</i> f. (47) Sulu, extra .....	60
V. 146 <i>poppei</i> , (22-24) Cape Verde, gem .....	90
V. 147 <i>praelatus</i> , (44-51) Mozambique, gem .....	35
V. 148 <i>praelatus</i> , (64) Mozambique, extra .....	100
V. 149 <i>praelatus</i> , red f. (43-45) Moz., extra .....	60
V. 150 <i>praelatus</i> , beautiful series of three, .....	100
V. 151 <i>prometheus</i> , (180-200) Senegal, gem .....	85
V. 152 <i>proximus</i> , (30-37) Philippines, gem .....	100
V. 153 <i>proximus</i> , (34-35) Solomons, gem .....	85
V. 154 <i>phuketensis</i> , juv. rare f. (25), India, gem .....	90
V. 155 <i>phuketensis</i> , (50-54) India, extra .....	280
V. 156 <i>pulicarius, fustigatus</i> f. (47), Polyn, fine + .....	15
V. 157 <i>purpurascens</i> , six diff. patterns, Galap., choice .	20
V. 158 <i>quasimagnificus</i> , (54-60) Oman, gem .....	20
V. 159 <i>quercinus</i> , rare juv. f. (30) G.B.R., gem .....	15
V. 160 <i>regius</i> , sp. black f. (42-44) F. Norúna, gem .....	25
V. 161 <i>regius, citrinus</i> f. (35-37) Martinique, gem .....	25
V. 162 <i>regius</i> , half <i>citr.</i> f. (46) Florida, gem .....	20
V. 163 <i>regius</i> , series of four variants, choice .....	60
V. 164 <i>rubiginosus</i> , (42) Mozambique, gem .....	25
V. 165 <i>rubropennatus</i> , (44) Mauritius, fine + .....	70
V. 166 <i>rubropennatus</i> , (33-40) Reunion, extra .....	100
V. 167 <i>rubropennatus</i> , (45-47) Reunion, extra .....	120
V. 168 <i>rutilus</i> , beautiful series, five colours, W.A., .....	20
V. 169 <i>sairensis</i> , (20-23) Cape Verde, gem .....	20
V. 170 <i>samiae</i> , (50-60) Philippines, gem .....	25
V. 171 <i>seagravei</i> , record sized (52) S.A., extra .....	260
V. 172 <i>scalptus</i> , (34-36) Solomons, gem .....	35
V. 173 <i>sieboldi</i> , (70) Japan, gem .....	20
V. 174 <i>skinneri</i> , (55) Bali, extra .....	450
V. 175 <i>stupella</i> , (66) w/o Taiwan, fine + .....	250
V. 176 <i>suffusus</i> , (38-41) New Caledonia, gem .....	15
V. 177 <i>suffusus</i> , interm. f. (42-46) N.C., fine + .....	30
V. 178 <i>sugimotonis</i> , (100) w/o Taiwan, fine + .....	100
V. 179 <i>sukhadwalai</i> , (34-41) w/o India, gem .....	250
V. 180 <i>sukhadwalai</i> , (46) w/o India, extra .....	300
V. 181 <i>sulcocastaneus</i> ; (48-51) Philippines, .....	35
V. 182 <i>tegulatus</i> , (28-36) w/o Dampier, gem .....	25
V. 183 <i>tegulatus, albin.</i> f. (25-27) W.A., gem .....	35





CONIDAE

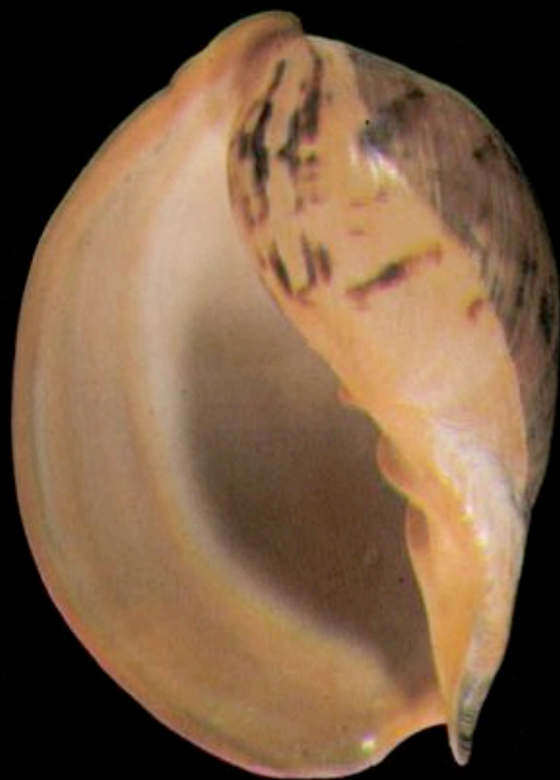
		U.S. \$
V. 1	<i>aculeiformis</i> (30-33) India, gem	15
V. 2	<i>ammiralis</i> , dark f. (54-58) P.I., gem	30
V. 3	<i>anemone, singletoni</i> f. (26-32) W.A., gem	20
V. 4	<i>archiepiscopus</i> (26-30) Reunion, gem.	50
V. 5	<i>archiepiscopus</i> (45) Reunion, gem.	100
V. 6	<i>archithalassus</i> (46) Thailand, gem.	130
V. 7	<i>archithalassus</i> (42) Reunion, extra	140
V. 8	<i>armadillo</i> (68-72) Philippines, gem.	25
V. 9	<i>articulatus</i> (21) Solomons, gem.	100
V. 10	<i>articulatus</i> (20) Philippines, fine +	60
V. 11	<i>ateralbus</i> (36-38) Cape Verde, gem.	30
V. 12	<i>attenuatus</i> (20-21) Martinique, gem.	25
V. 13	<i>augur</i> , black banded f. (51-53) Moz., gem.	10
V. 14	<i>aureus</i> (37) Philippines, gem.	60
V. 15	<i>auricomus</i> (37) Philippines, gem.	45
V. 16	<i>barthelemyi</i> , juv. f. (31) Reun., gem.	30
V. 17	<i>barthelemyi</i> , strongly spott. (55-64) gem.	80
V. 18	<i>barthelemyi</i> , unspotted (63-73) gem.	75
V. 19	<i>barthelemyi</i> , choice of five extra spec.	300
V. 20	<i>bengalensis</i> , (95) Thailand, fine +	300
V. 21	<i>bengalensis</i> , (95) dark, Andaman, extra	450
V. 22	<i>bengalensis</i> , special Indian f. (92) gem.	500
V. 23	<i>bullatus</i> , (45-49) Solomons, fine +	45
V. 24	<i>bullatus</i> , (66-68) Philippines, gem.	200
V. 25	<i>bullatus</i> , (52-54) Hawaii, gem.	60
V. 26	<i>bullatus, articulata</i> f., (65) Reunion, gem.	150
V. 27	<i>cabritii</i> , (22-24) New Caledonia, gem.	20
V. 28	<i>cabritii</i> , three diff. patterns, choice	50
V. 29	<i>capitanellus</i> , (28-33) Philippines, fine +	35
V. 30	<i>capriolus</i> , (40-46) India, fine +	80
V. 31	<i>cedonulli</i> , 45-48) Venezuela, fine +	50
V. 32	<i>cedonulli</i> , (43-49) Venezuela, gem.	90
V. 33	<i>cedonulli, holemani</i> f. (46-53) St. Vincent, gem.	200
V. 34	<i>chenui</i> , (50) New Caledonia, gem.	40
V. 35	<i>cholmondeleyi</i> , (45) Mozambique, gem.	120
V. 36	<i>chusaki</i> , (54-56) Thailand, gem.	50
V. 37	<i>circumactus</i> , (27) Philippines, gem.	45
V. 38	<i>circumciscus</i> , juv. f. (40) Thailand, gem.	30
V. 39	<i>circumciscus</i> , unspott. f. (60-65) Sol., gem.	50
V. 40	<i>circumciscus</i> , dark f. (50-55) Philippines, gem.	65
V. 41	<i>cocceus</i> , albinistic f. (49) W.A., extra	60
V. 42	<i>cocctneus</i> , three diff. colours, choice	35
V. 43	<i>colubrinus</i> , (40) Solomons, gem.	80
V. 44	<i>comatosa</i> , (42) Philippines, gem.	45
V. 45	<i>concolor</i> , (34-36) Solomons, gem.	15
V. 46	<i>connectens</i> , (39) Sulu, fine +	50
V. 47	<i>coromandelicus</i> , (34-37) India, gem.	350
V. 48	<i>crocatus</i> , (32) New Caledonia, gem.	80
V. 49	<i>croseanus</i> , (56-60) New Caledonia, gem.	35
V. 50	<i>crotchii</i> , (20-24) Cape Verde, gem.	20
V. 51	<i>cumingii</i> , (43) Solomons, gem.	50
V. 52	<i>damottai</i> , 20-22) Cape Verde, gem.	30
V. 53	<i>delanoyi</i> , (24-25) Cape Verde, gem.	25
V. 54	<i>dusaveli</i> , (63) Philippines, extra	250
V. 55	<i>dusaveli</i> , (73) Philippines, gem.	250
V. 56	<i>dusaveli</i> , (78) Philippines, gem.	300
V. 57	<i>dusaveli</i> , (79) Philippines, extra	400
V. 58	<i>ebraeus</i> , five diff. patterns, choice	20
V. 59	<i>eburneus</i> , five diff. patterns, choice	25
V. 60	<i>elegans</i> , (21) Mozambique, fine +	35
V. 61	<i>elegans</i> , (25) Mozambique, gem	60





# THE CONNOISSEUR *of seashells*

PER LO SPECIALISTA IN CONCHIGLIE ● POUR LE CONNAISSEUR DE COQUILLAGES



*Melo (Melo) melo*  
**LIGHTFOOT, 1786**

*forma sinistrorsa (RAYBAUDI, 1935)*

**GRANDE  
RARITA**

**EXTREMELY  
RARE**

**7**

**FEBRUARY  
FEBBRAIO 1986**

**GEMME del MARE**

P.O. BOX 561 ● ROMA 00187 (ITALY)



Le figure 4-8 presentano nel loro ambiente e con gli animali in espansione gli stessi 5 esemplari della prima fila della fig. 9: la cui seconda fila presenta 4 esemplari provenienti tutti dalla West Coast della Penisola del Capo.

Fig. 4-8 show in their own habitat and with the expanding animals the same 5 specimens of the first row of Fig. 9, of which the second row shows 4 specimens all from the West Coast of Cape Peninsula.

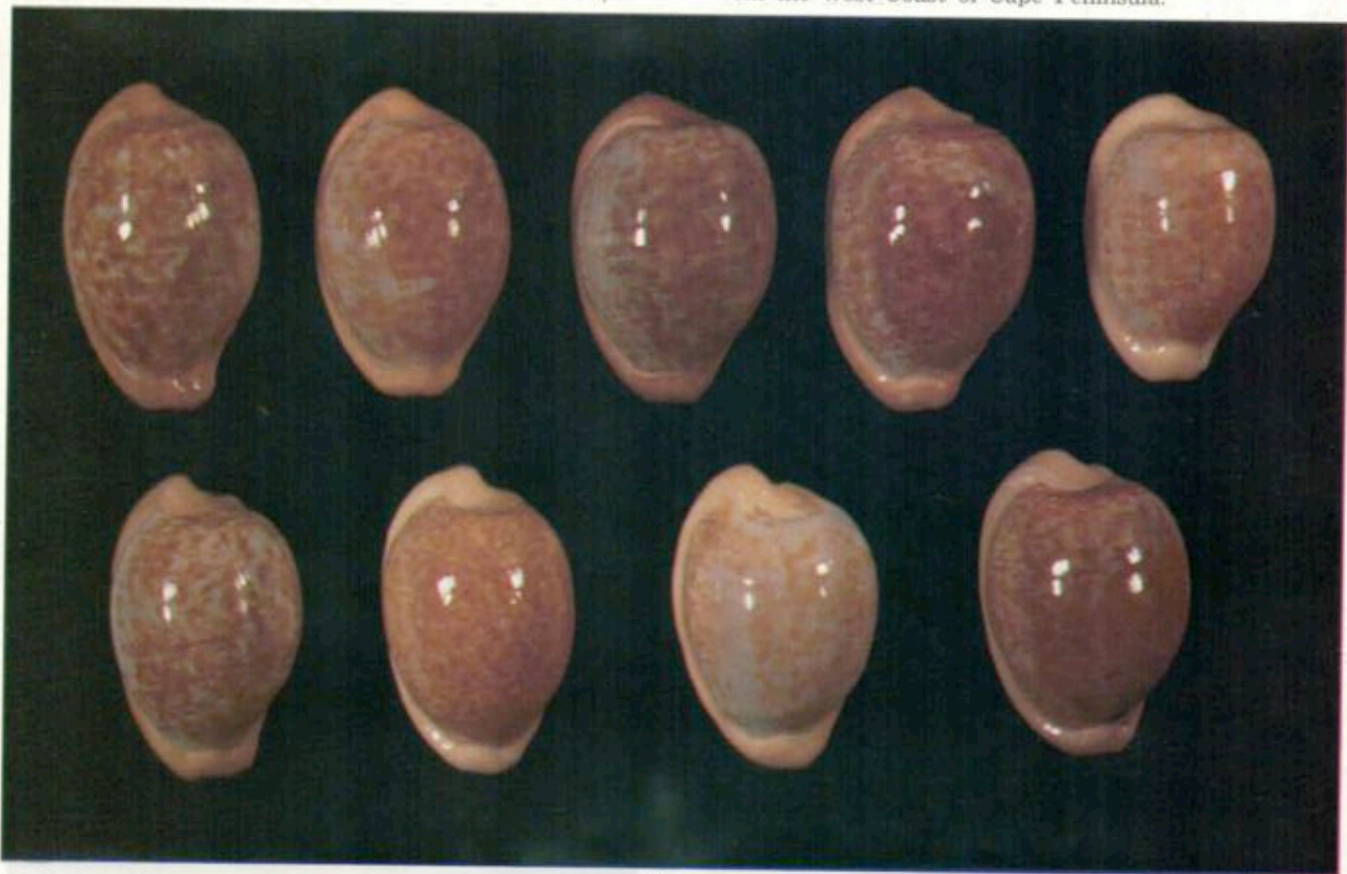


Fig. 9

La fig. 10 mostra, con esattezza aggiornata in base a dati sicuramente accertati, le zone di *fuscobrunnea* e *castanea* (= *verhoefti*), nettamente separate fra di loro.

Fig. 10 shows the areas of *fuscobrunnea* and *castanea* (= *verhoefti*), clearly distinguished between them, accurately up to dated according to surely ascertained data.

La fig. 11 presenta altri otto esemplari di forma e colore diversi: notevole la globosità del secondo esemplare. La fig. 12 altri tre esemplari interessanti: il primo quasi bianco da Cape Point, il secondo molto scuro dalla West Coast ed il terzo quasi bianco da Hout Bay.

Fig. 11 reproduces other eight specimens showing different form and colours: the globosity of the second specimen is remarkable.

La fig. 13 presenta una interessante e notevole curiosità: una *fuscobrunnea* morta e totalmente ricoperta da *Hydrocorella africana*.

Fig. 12 shows other three interesting specimens: the first, almost white, is from Cape Point, the second, very dark, from the West Coast and the third, almost white, from Hout Bay.

Due rilievi di carattere generale, validi anche per *fuscobrunnea*: gran parte delle *Luponiae* presenta sul lato destro, immediatamente sopra il callo marginale, asperità o rughe o addirittura difetti caratteristici: così come presenta la base quasi sempre opaca, o quantomeno assai meno lucida del dorso.

Fig. 13 presents an interesting and remarkable curiosity: a dead *fuscobrunnea*, completely re-covered by the hydroid *Hydrocorella africana*.

There are two remarks of general character, valid for *fuscobrunnea* too: a great many of *Luponiae* show on the right side, exactly above the marginal callous, some roughnesses or wrinkles or really characteristic imperfections as well as they show a base nearly always dull or at least, much less glossy than the dorsum.

**Catalogue:** besides the main listed colour-forms, in my collection I have found other less frequent variants: lilac, golden and dark brown. In my valuation, dating back to September 1985, I fell into a mistake concerning the exchange of the South African value with the dollar: the prices of the catalogue have to be reduced of about 40%.

For what concerns hybrid forms besides the crossbreed with *fuscobrunnea* (*fuscobrunnea* teathed like *fuscobrunnea*) of which I know some specimens and which I believe surely verisimilar, I can guess (but only according to one specimen hitherto) what follows: *algaensis* and *fuscobrunnea* having the teeth of *fuscobrunnea*. Of course these two hypothesis need to be confirmed.

**Catalogo:** oltre alle tinte principali elencate, ho trovato nella mia collezione altri colori assai meno frequenti: lilla, oro e bruno scuro. Nelle valutazioni fatte nel settembre 1985 ero incorso in un errore sul cambio della valuta sudafricana con il dollaro: i prezzi del catalogo vanno ridotti di circa il 40%.

Quanto alle forme ibride, oltre all'incrocio con *fuscobrunnea* (*fuscobrunnea* con i denti di *fuscobrunnea*) di cui conosco alcuni esemplari e che ritengo senz'altro verosimile, penso di poter ipotizzare (ma in base ad un solo esemplare, sinora): *algaensis* e *fuscobrunnea* con denti di *fuscobrunnea*. Due ipotesi che naturalmente necessitano di conferme.















## CONCHIGLIE RARE

Sono sempre valide, per quanto disponibile e sino ad esaurimento, le offerte della nostra VETRINA DI NATALE, ma con pagamento in dollari oppure al cambio allora indicato (pag. 15 N. 6) di 1\$ = 1.700 lire.

1-27

(1986)

## RARE SHELLS

The offers of our special CHRISTMAS WINDOW are still valid, unless exhausted, but payment will be made in U.S. dollars or in Italian liras at the change of \$ 1 = Lit. 1.700 (as indicated at page 15, N°6)

	\$
<b>Famiglia Strombidae RAFINESQUE, 1815</b>	
1 <i>Lambis (Lambis) crocata pilsbryi</i> ABBOTT, 1961 (250) Marquesas, giant (w. record?) fine + .....	200.00
2 <i>Lambis (Lambis) crocata crocata</i> LINK, 1807 (155) Somaliland fully doubled digitation, great rarity, gem	P.o.r.
3 <i>Lambis (Lambis) crocata f. hybrida</i> (145) Somaliland probably unique, gem .....	300.00
<b>Famiglia Cypraeidae RAFINESQUE, 1815</b>	
4 <i>Barycypraea fultoni</i> SOWERBY III, 1903 Natal, great rarity, extra gem .....	P.o.r.
5 <i>Zoila (Zoila) friendii albinea</i> RAYBAUDI, 1977, Geogr. Bay, great rarity, gem .....	P.o.r.
6 <i>Lyncina (Lyncina) broderipii broderip.</i> SOWERBY I, 1832 (105) Reunion I., giant (for many years world record)	P.o.r.
7 <i>Lyncina (Lyncina) porteri joicae</i> CLOVER, 1970 (60) Taiwan, fine + .....	1.000.00
8 <i>Cypraeovula (Cypraeovula) amphithales</i> MELVILL, 1888 (26) Jeffreys B., the best specimen known .....	850.00
9 ( <i>Genus acclarandum</i> ) <i>bernardi</i> RICHARD, 1974 (12) Tahiti extra gem .....	P.o.r.
<b>Famiglia Oocorythidae P. FISHER, 1883</b>	
10 <i>Oocorys solidior</i> DAUTZ.-FISCHER, 1906 (38,5) Sicily: the best spec. known (Piani collect.), great rarity, gem	P.o.r.
<b>Famiglia Muricidae DA COSTA, 1776</b>	
11 <i>Naquetia annandalei</i> PRESTON, 1910 (90) Red Sea: the true, beautiful lt. gem .....	480.00
12 <i>Naquetia annandalei</i> PRESTON, 1910 (61) Red Sea: small colorfull, w/o gem .....	300.00
13 <i>Homalocantha anomaliae</i> KOSUGE, 1979 (57) Philippines: very rare, fine + .....	600.00
14 <i>Homalocantha dovpeledi</i> HOUART, 1982 (49) Israel: w/o fine + .....	170.00
15 <i>Homalocantha dovpeledi</i> HOUART, 1982 (58) Israel: w/o, large fine + .....	195.00
<b>Famiglia Volutidae RAFINESQUE, 1815</b>	
16 <i>Lyria (Harpeola) anna</i> LESSON, 1835 (61) Mauritius: very good beach .....	320.00
17 <i>Lyria (Lyria) beauti</i> FISCHER/BERNARDI (47) Guadeloupe: live taken, w/o really rare, gem .....	600.00
18 <i>Cymbiolacca perplicata</i> HEDLEY, 1902 (80) Queensland: giant, fine ++ .....	500.00



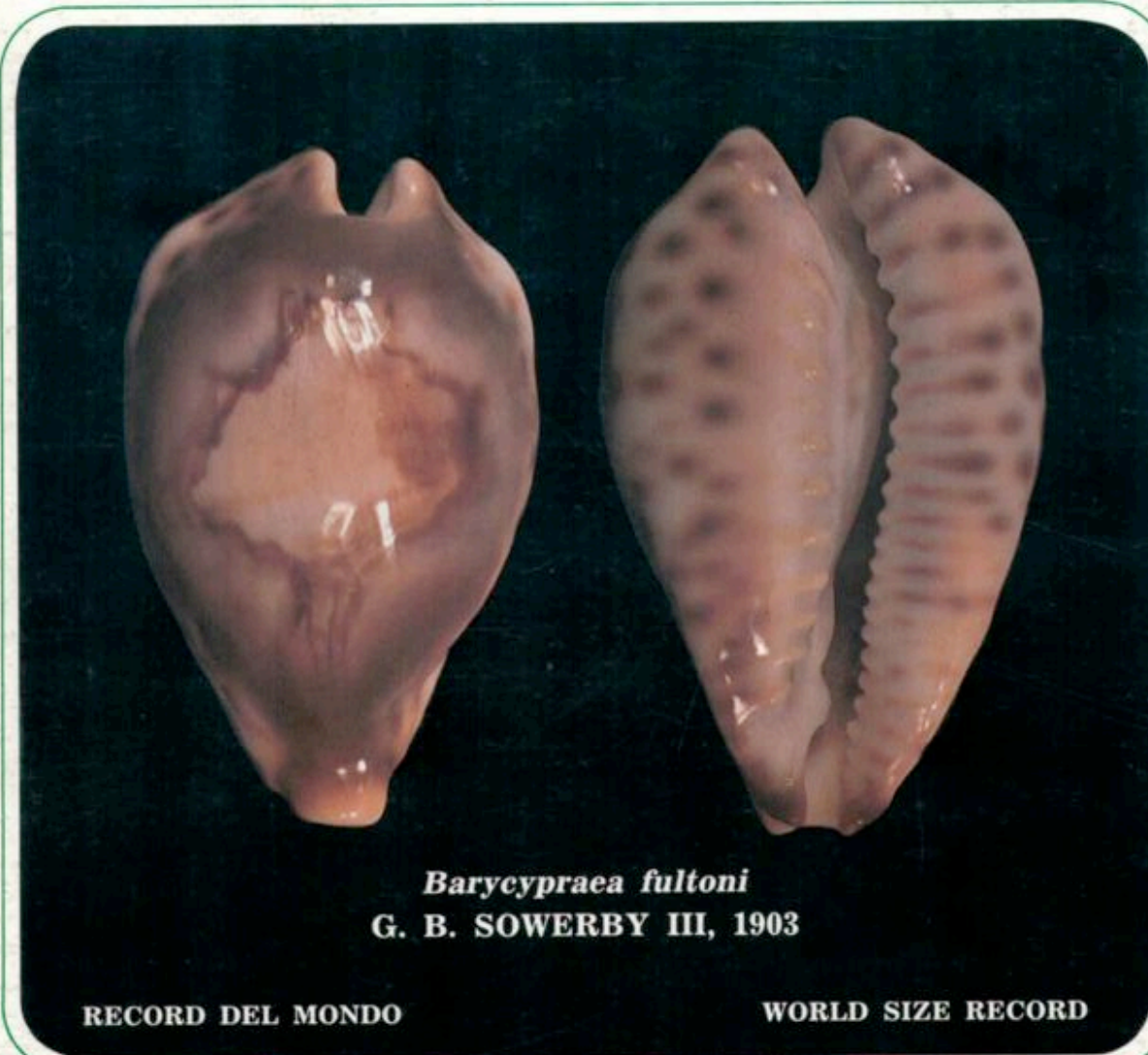


# THE CONNOISSEUR *of seashells*

PER LO SPECIALISTA IN CONCHIGLIE



POUR LE CONNAISSEUR DE COQUILLAGES



*Barycypraea fultoni*  
G. B. SOWERBY III, 1903

RECORD DEL MONDO

WORLD SIZE RECORD

8

APRIL  
APRILE

1986

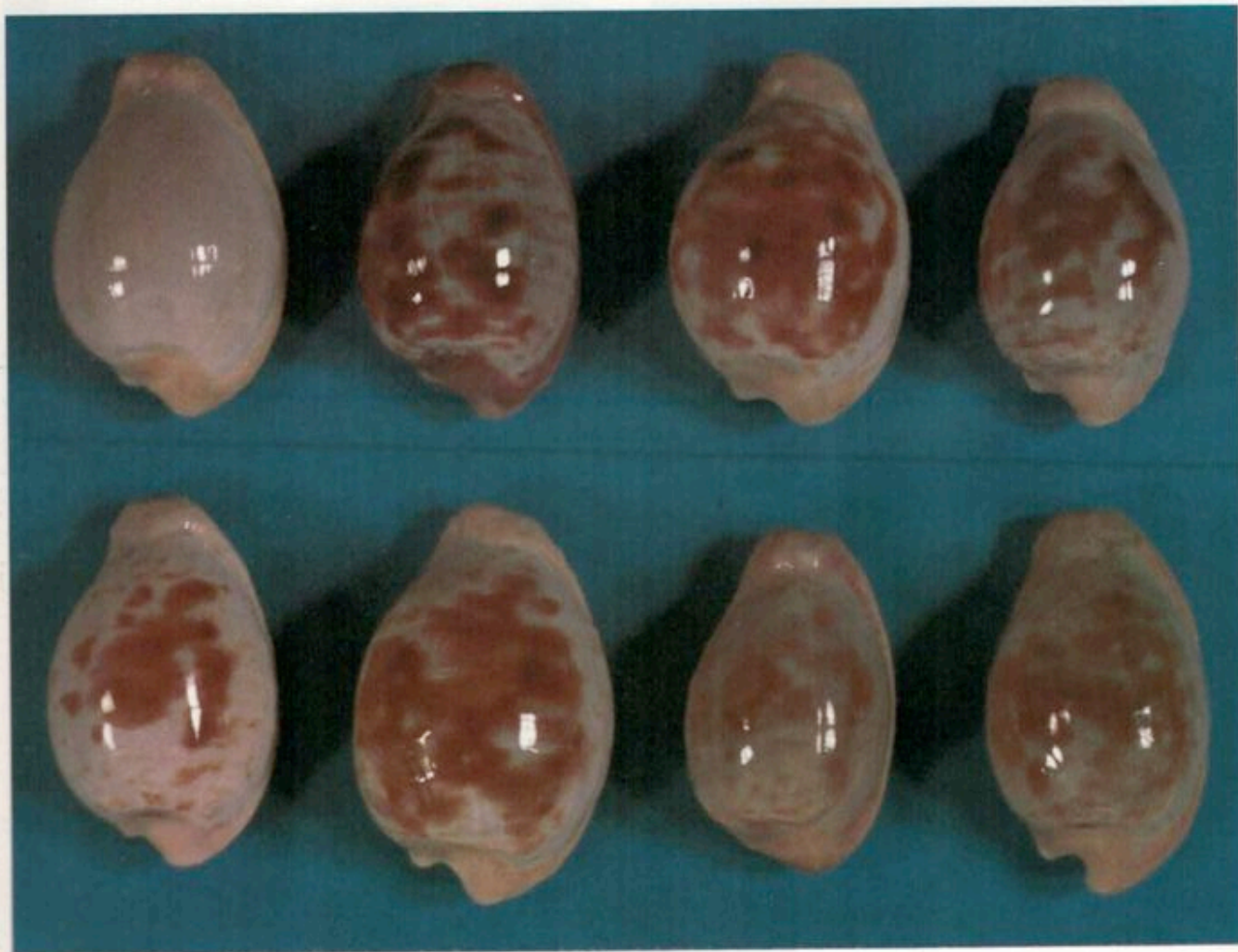
GEMME del MARE

P.O. BOX 561 • ROMA 00187 (ITALY)



Schlider knew only the *coronata* coming from Cape of Good Hope - (in fact *coronata* does come from that area) and the only *fuscidentata* (which I will call the Eastern one) from -Port Elizabeth to Keishama (Keishama River) or Point is a little more to the South of East London). Well, there are more than 800 km. from Cape Good Hope to Port Elizabeth, a distance more than sufficient to let coexist two races of the same species; all the more that the two areas are also separated ecologically and different, due to the presence of two currents of opposite directions and different temperature. Barnes' criticism, unjustified at that time, could be understood today, since when we have known *fuscidentata* does exist also at False Bay and therefore *coronata* and *fuscidentata* are closely in touch. But today there are no problems because the two taxa correspond to two different valid species which can obviously coexist.

Fig. 7  
1. *violacea*  
2. *immaculata*



1963 - Finally here is the first authoritative judge of a great South African malacologist, K. H. Barnes, known for his very excellent competence of the subject. In his very good and well supported work, he gave much more importance to the endemic South African coxites, giving interesting and often unpublished news of them. But his scepticism about *Luponia coronata* was evident, being sure he too didn't know it. Moreover he aroused a ground-less and heavy criticism to the -idea of two local races of *fuscidentata* in such a restricted area - thinking it was impertinent towards Prof. Schlider whose -scientific knowledge - cannot really be put into discussion! At that time

1963 - E finalmente arriva il primo autorevole giudizio per la sua altissima competenza in materia. Nella sua ottima e documentatissima opera egli privilegia le cipree endemiche del Sud Africa, fornendone notizie interessanti e spesso inedite; ma è chiaro il suo scetticismo su *Luponia coronata*, che evidentemente anch'egli non conosce. Anzi muove una grave ed infondata critica alla -idea di due razze locali di *fuscidentata* in un'area così ristretta-, ritenendola -scientificamente- una critica non pertinente, anzi impertinente nei confronti del Prof. Schlider, la cui -scientificità - non è davvero discutibile! Schlider conosceva

allora la *coronata* proveniente da -Cape of Good Hope- (dalla cui zona infatti la *coronata* proviene) e soltanto un tipo di *fuscidentata*, (quella che io chiamo orientale), di -Port Elizabeth to Keishama- (Keishama River o Point si trova poco più a sud di East London). Or bene da Cape of Good Hope a Port Elizabeth corrono oltre 800 km., una distanza più che sufficiente per rendere possibile l'esistenza di due razze della stessa specie; tanto più che le due zone sono anche ecologicamente separate e diverse, per la presenza di due correnti di direzione contraria e di temperatura diversa. La critica di Barnes, ingiustificata allora, potrebbe comprendersi oggi, da quando sappiamo che la *fuscidentata* esiste anche a False Bay e che quindi *coronata* e *fuscidentata* sono a contatto di gomito. Ma il problema oggi non si pone più, perché i due taxa corrispondono oggi a due specie valide diverse, che possono ovviamente coabitare.



# THE CONNOISSEUR *of seashells*

PER LO SPECIALISTA IN CONCHIGLIE ● POUR LE CONNAISSEUR DE COQUILLAGES



*Lyncina (Mystaponda) broderipii broderipii*  
G. B. SOWERBY II, 1832

Esemplare gigante  
da 105 mm.

GEM

Giant specimen  
105 mm.

9

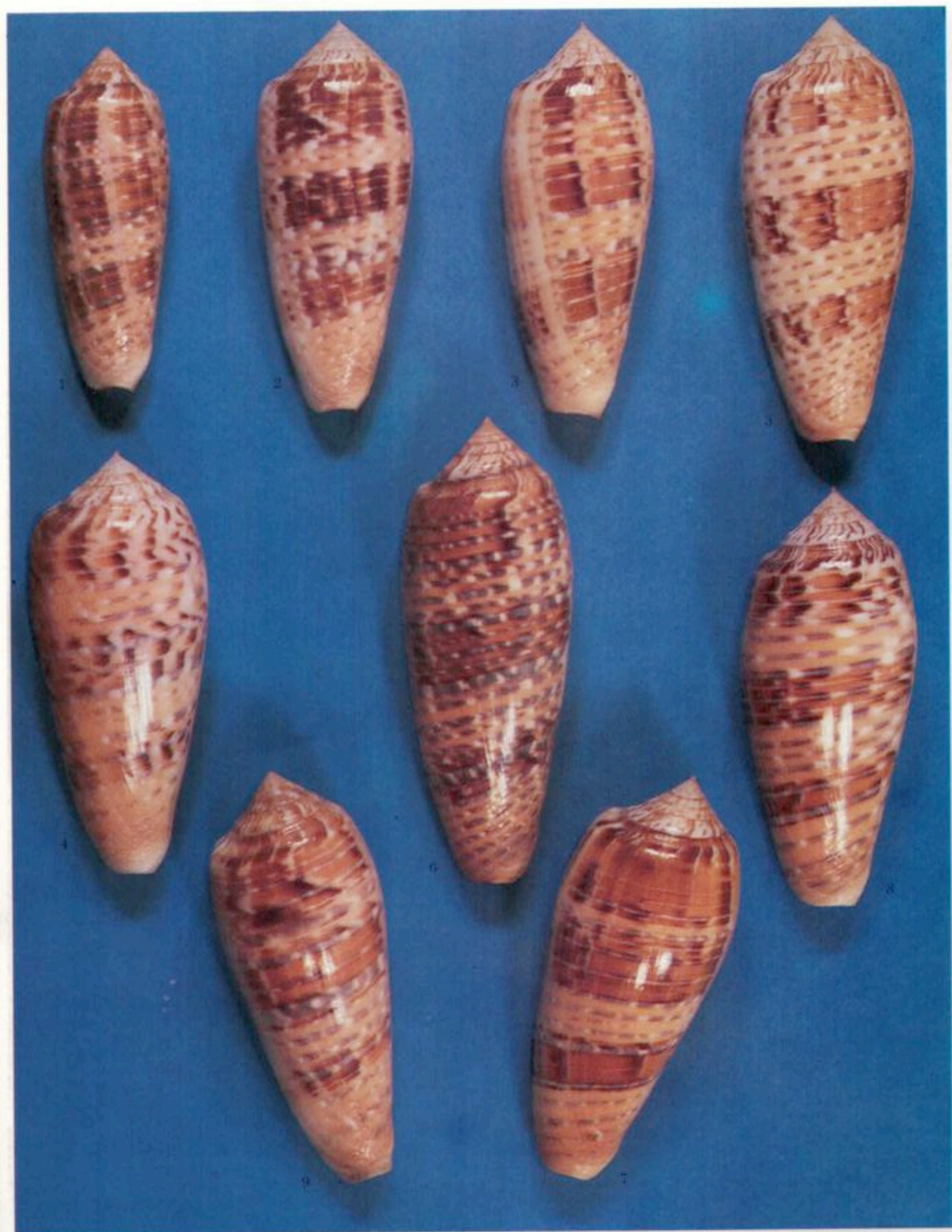
10

JUNE - AUGUST  
GIUGNO - AGOSTO 1986

GEMME del MARE

P.O. BOX 561 • ROMA 00187 (ITALY)







1-4-5 = *f. iridacea*2-3-8 = *f. pallida*6-7 = *f. typica*9 = *f. saturata*

(e sono rari) esemplari più o meno scuri ma con denti bianchi: una variazione che mi sembra notevole in una specie che reca il nome di *fusco-dentata*. Di questa popolazione esistono sino ad oggi solo esemplari spiaggiati (comuni), qualche esemplare «ex pisce» (raro) e tre, forse quattro, esemplari raccolti vivi in craypots (nasse per aragoste).

● Popolazione occidentale. Solo alla fine degli anni '70 dalle acque di False Bay vennero tratti esemplari vivi di *fusco-dentata* e da allora molti altri ne sono stati pescati da subacquei locali ad una profondità media di 15-20 metri (con limiti estremi in 6 metri e 45 metri). Questa popolazione occidentale (con locus typicus in False Bay), apparentemente separata da quella orientale (con locus typicus in Jeffreys Bay) da circa mille chilometri di costa, è caratterizzata da conchiglie normalmente più larghe, più grandi, più solide e più variamente colorate. L'ornamentazione dorsale è spesso marmorizzata, talvolta più scura e suffusa, più raramente chiara o chiarissima oppure di un colore che va dal lilla al viola intenso; colore questo che si ripete anche nei denti. Queste variazioni di colore si presentano anche in nuances intermedie ed in esemplari «conviventi»: il che porta ad escludere che esse, pur avendo un indubbio interesse, possano avere valore subspecifico. Le tinte estreme sono assai pregiate e molto ambite dagli specialisti. La forma viola (con margini e denti viola) viene chiamata localmente «mauve form»: ad essa Lobetti ha dato il nome di forma *iridacea*, un nome suggestivo che io conservo nel catalogo, anche se non esattamente appropriato. Così come conservo il nome di *clarissima*, dato da Lobetti alla forma molto chiara anche se forse il nome *pallidior* sarebbe stato sufficiente.

Oltre a queste due importanti popolazioni (*orientalis* ed *occidentalis*) per ora separate e distinguibili (ma con probabili anelli di congiunzione nella zona che va da Cape

teeth, occurs (and are rare): it is a variation really remarkable in a species called *fusco-dentata*. Up today only beached shells (common) of this population do exist, some specimens «ex pisce» (rare) and three, perhaps four specimens live collected in craypots.

● Western population. Only towards the end of the seventies, live specimens of *fusco-dentata* were fished in the waters of False Bay and since then many others by local divers at an average depth of 15-25 meters (with extreme limits between 6 and 45 meters). About one thousand kilometers of coastlines apparently divide the western population (having his locus typicus in False Bay) from the eastern one (with locus typicus in Jeffreys Bay). The former is characterized by shells being normally broader, larger, more solid and more differently coloured. The dorsal ornamentation is often marbled, sometimes darker and suffused, more rarely light or very light or having a colour from purple to intense violet, colour featuring also the teeth. These colour variants show also intermediate nuances and appear in «living together» specimens: consequently, even if undoubtedly interesting, they shouldn't be of subspecific meaning. Extreme colours are very valuable and very longed for by the specialists. The purple form (having purple margins and teeth) is locally called «mauve form»: Lobetti has given it the name of *forma iridacea*, a suggestive name, which I keep in my catalogue even if not exactly appropriate. In the same way I keep the name of *clarissima*, given by Lobetti to the very pale form, even if perhaps the name *pallidior* would have been enough.

Besides these two important populations (*orientalis* and *occidentalis*) for now separated and distinguishable (but probably overlapping in the area included between Cape Agulhas and Jeffreys Bay) I must point out two



# CONIDAE

## QUICK LIST 2 LISTA SEMPLIFICATA

La maggior parte delle specie quotate è sempre disponibile; i prezzi rimarranno validi fino a Nov. 1986; cambio del dollaro ai valori del giorno.

Mostly of quoted species are always available; prices will be valid till November 1986. Current exchange of U.S.A. dollar.

1	<i>abbas</i> HWASS, 1792 (40-42) India, gem .....	25.00
2	<i>abbreviatus</i> REEVE, 1843 (15-17) Hawaii, fine + .....	5.00
3	<i>achatinus</i> GMELIN, 1791 (50-60) India, gem .....	3.00
4	<i>achatinus</i> GMELIN, 1791 (65-75) very large, gem .....	8.00
5	<i>aculeiformis</i> REEVE, 1844 (28-30) Solomons, fine + .....	25.00
6	<i>aculeiformis</i> REEVE, 1844 (30-32) India, gem .....	10.00
7	<i>acuminatus</i> HWASS, 1792 (32-34) Red Sea, uncom. gem .....	12.00
8	<i>acutangulus</i> LAMARCK, 1810 (25-28) India, gem .....	8.00
9	<i>acutangulus</i> LAMARCK, 1810 (20-21) pure white, gem .....	15.00
10	<i>adenensis</i> E.A. SMITH, 1891 (42-44) Red Sea, fine .....	15.00
11	<i>advertex</i> GARRARD, 1961 (30-31) Queensl. unc. fine + .....	18.00
12	<i>aemulus</i> REEVE, 1844 (29-31) West Africa, fine + .....	8.00
13	<i>alabaster</i> REEVE, 1849 (38-40) India, fine-gem .....	3.00
14	<i>algoensis alg.</i> SOWERBY, 1834 (23-28) S. A. live tak. fine + .....	50.00
15	<i>algoensis aguilhast</i> COOM-MOOL. (23-26) S.A. lt. fine-gem .....	20.00
16	<i>algoensis scitulus</i> REEVE, 1849 (20-22) S.A. lt. fine-gem .....	25.00
17	<i>algoensis simplex</i> SOWERBY, 1857 (21-23) S.A. lt. fine-gem .....	25.00
18	<i>algoensis simplex</i> SOWERBY, 1857 (50-52) monst., w. per. gem .....	180.00
19	<i>amadis</i> GMELIN, 1791 (80-90) India, dark spec. gem .....	12.00
20	<i>amadis</i> GMELIN, 1791 (70-72) India, golden f. gem .....	20.00
21	<i>amad. castaneofasciat.</i> DAUTZ, (50-54) -arbonat.- f. Thal. gem .....	20.00
22	<i>ambiguus</i> REEVE, 1844 (45-52) West Africa, fine + as. usual .....	8.00
23	<i>amethystinus</i> TROVAO, 1975 (40-42) Cape Verde I. fine + .....	5.00
24	<i>amiralis</i> LINNAEUS, 1758 (50-58) Philippines, gem .....	25.00
25	<i>amiralis tennes</i> IREDALE, 1930 (50-54) Queensland, gem .....	20.00
26	<i>anemone</i> LAMARCK, 1810 (28-36) West Austr. dark, gem .....	2.00
27	<i>anemone compressus</i> SOWERBY, 1866 (45-48) W.A. h.s. fine + .....	20.00
28	<i>anemone novaeholl.</i> A. ADAMS (36-38) W.A. pale f. gem .....	2.00
29	<i>anemone singletoni</i> COTTON, 1945 (26-32) W.A. alb. gem .....	20.00
30	<i>angasi</i> TRYON, 1883 (33-35) Queensland, fine + .....	50.00
31	<i>araneosus aran.</i> LIGHTFOOT, 1786 (70-80) India, fine ++ .....	3.00
32	<i>araneosus nicobar.</i> HWASS, 1792 (55-60) Philippines, unc. fine .....	10.00
33	<i>archiepiscopus</i> HWASS, 1792 (26-30) Reunion, blue gems .....	55.00
34	<i>archiepiscopus</i> HWASS, 1792 (52) Reunion, extra .....	125.00
35	<i>archithalassus</i> HWASS, 1792 (40-44) Thailand, gem .....	120.00
36	<i>archithalassus</i> HWASS, 1792 (40-41) Reunion, extra .....	140.00
37	<i>archon</i> BRODERIP, 1833 (40-43) Mexico, fine+ .....	18.00
38	<i>arcuatus</i> BRODERIP-SOWERBY, 1829 (33-35) Panama, fine + .....	5.00
39	<i>ardisiaceus</i> KIENER, 1845 (25-30) Oman, fine + .....	25.00
40	<i>arenatus</i> HWASS, 1792 (40-5-) Mozambique, fine ++ .....	2.00
41	<i>arenatus armatus</i> SMITH (63-65) Red Sea, high cor. fine + .....	15.00
42	<i>armadillo</i> SHIKAMA, 1971 (64-72) Philippines, gem .....	30.00
43	<i>articulatus</i> SOWERBY, 1873 (20-21) Solomons, fine + .....	85.00
44	<i>attenuatus</i> SOWERBY, 1838 (30-41) Queensl. uncommon, fine++ .....	95.00
45	<i>attenuatus</i> REEVE, 1844 (20-23) Martinique, dived, w/o gem .....	40.00
46	<i>attenuatus</i> REEVE, 1844 (20-24) Martinique, minor flaws, fine+ .....	20.00
47	<i>augur</i> LIGHTFOOT, 1786 (51-53) Mozambique, extra .....	10.00
48	<i>augur</i> LIGHTFOOT, 1786 (45-50) India, gem .....	6.00
49	<i>aulicus</i> LINNAEUS, 1758 (90-105) Seychelles, fine ++ .....	15.00
50	<i>aulicus</i> LINNAEUS, 1758 (110-118) Philippines, dark, gem .....	28.00
51	<i>aurantius</i> HWASS, 1792 (28-30) Neath. Antilles, gem - .....	30.00
52	<i>aurantius</i> HWASS, 1792 (32-38) Neath. Ant., dark brown, fine+ .....	45.00
53	<i>aureus</i> HWASS, 1792 (33-36) Philippines, fine ++ .....	100.00
54	<i>auricomus</i> HWASS, 1792 (36-38) Philippines, gem .....	48.00
55	<i>aurisiacus</i> LINNAEUS, 1758 (48-51) Moluccas, lt. rare gem .....	690.00
56	<i>australis</i> RÖDING, 1798 (45-65) Taiwan, fine .....	3.00
57	<i>bailey</i> DA MOTTA-ROCKEL (22) Philippines, gem .....	48.00
58	<i>bairstovi</i> SOWERBY, 1889 (38-43) South Africa, good beach .....	16.00
59	<i>bayani</i> JOUSSEAU, 1872 (54-61) India, w/o, gem .....	6.00
60	<i>bayani</i> JOUSSEAU, 1872 (50-53) India, albin. f. gem .....	18.00
61	<i>balteatus</i> SOWERBY, 1833 (25-28) Reunion, uncommon, fine + .....	25.00
62	<i>bengalensis</i> OKUTANI, 1978 (100) Thailand, gem .....	500.00





369	<i>pulicarius</i> HWASS, 1793 (40-42) Solomons, fine +	2.00
370	<i>pulicarius justigatus</i> HWASS, 1792 (43) Tahiti, fine ++	12.00
371	<i>pulicarius vautieri</i> KIENER, 1848 (33-35) Marques., end. fine +	25.00
372	<i>punctulatus perplexus</i> SOWERBY, 1858 (22-27) Mex., fine +	10.00
373	<i>punctulatus columba</i> HWASS, 1792 (16-18) Panama, fine ++	6.00
374	<i>purpurascens</i> SOWERBY, 1833 (30-45) Pan., several patt. gem	3.00
375	<i>quasimagnificus</i> (54-60) Oman, fine +	25.00
376	<i>queenslandis</i> DA MOTTA (88-95) Queensland, fine + as usual	90.00
377	<i>querctinus</i> LIGHTFOOT, 1786 (66-73) Australia, fine +	3.00
378	<i>racemosus</i> SOWERBY, 1874 (47) Mad., a beaut. sp., rare, gem	500.00
379	<i>radiatus</i> GMELIN, 1791 (45) Philippines, uncommon, fine +	5.00
380	<i>rattus</i> HWASS, 1792 (30-40) Red Sea, fine ++	3.00
381	<i>recluzianus</i> BERNARDI (65-75) Taiwan, not <i>urashim</i> , fine ++	15.00
382	<i>recluzianus</i> BERNARDI (90-96) Taiwan, fine ++	24.00
383	<i>recurvus</i> BRODERIP, 1833 (56-58) Mexico, fine +	10.00
384	<i>regius</i> GMELIN, 1791 (40-42) Florida, w/o, fine ++	12.00
385	<i>regius</i> GMELIN, 1791 (42-52) F. Noruña I., sp. black f. fine-gem	25.00
386	<i>regius citrinus</i> GMELIN (35) Martinique, gem	20.00
387	<i>regius citrinus</i> GMELIN (56) Martin., live tak. w/o giant, fine +	38.00
388	<i>retifer</i> MENKE, 1829 (28-32) Philippines, well marked, fine-gem	18.00
389	<i>rubiginosus</i> HWASS, 1792 (40-42) Mozambique, fine ++	25.00
390	<i>rubropennatus</i> DA MOTTA (45) Mozambique, fine ++	80.00
391	<i>rubropennatus</i> DA MOTTA (50) Mozamb., really large, fine ++	120.00
392	<i>rufimaculosus</i> MACPHERSON, 1961 (40-45) Queensland, fine +	12.00
393	<i>rutilus</i> MENKE, 1843 (8-10) West Austr. uncommon, four diff.	18.00
394	<i>salreiensis</i> ROLAN (20-23) Cape Verde I., nice diff. patt., gem	25.00
395	<i>santiae</i> DA MOTTA (47-57) Philippines, fine + - gem	24.00
396	<i>sanguinolentus</i> QUOY-GAIMARD, 1834 (27-29) Red Sea, fine +	3.00
397	<i>sazanka</i> SHIKAMA, 1970 (19-21) Philippines, gem	60.00
398	<i>scabriusculus</i> DILLWYN, 1817 (28-40) Queensland, fine +	4.00
399	<i>scalptus</i> REEVE, 1843 (34-36) Solomons, well marked, gem	25.00
400	<i>schepmani</i> FULTON, 1936 (28-31) Philippines, gem	35.00
401	<i>sculletti</i> MARSH, 1961 (36-40) Queensland, nice, fine +	20.00
402	<i>sieboldii</i> REEVE, 1848 (68-84) Japan, fine +	10.00
403	<i>sindon</i> REEVE, 1844 (50) Mozambique, fine +	150.00
404	<i>sindon</i> REEVE, 1844 (50) Mozambique, extra	260.00
405	<i>spectrum</i> LINNAEUS, 1758 (42-45) Philippines, fine ++	5.00
406	<i>spectrum flam.</i> REEVE (35-38) Philippines, fine ++	10.00
407	<i>spectrum stillatus</i> REEVE (31-39) W. A., dark, nice fine +++	16.00
408	<i>sponsalis</i> HWASS, 1792 (16-18) Philippines, fine ++	2.00
409	<i>spons. nanus</i> SOWERBY, 1833 (21-23) West Australia, fine +	3.00
410	<i>spons. nux</i> BRODERIP, 1833 (18-19) California, fine +	5.00
411	<i>spurius</i> GMELIN, 1791 (74-76) Florida, w/o fine +	15.00
412	<i>stercusmuscarum</i> LINNAEUS, 1758 (44-46) Solomons, fine +	3.00
413	<i>stimpsoni</i> DALL, 1902 (56-58) Yucatan, fine +	25.00
414	<i>stramineus</i> LAMARCK, 1810 (26-39) Phil., uncommon, fine +	5.00
415	<i>striatellus</i> LINK, 1807 (38-40) Philippines, fine +	3.00
416	<i>striatus</i> LINNAEUS, 1758 (78-90) India, pale, flammul., fine ++	3.00
417	<i>striatus</i> LINNAEUS, 1758 (68-75) Reun., deep viol. unc. f. extra	12.00
418	<i>stupella</i> KURODA, 1956 (59.5) Taiwan, seldom avail, fine ++	P.o.r.
419	<i>suffusus</i> SOWERBY, 1870 (38-41) N. Caledonia, fine ++	15.00
420	<i>suffusus</i> SOWERBY, 1870 (62) N. Cal., very large, fine ++	40.00
421	<i>suffusus noumensis</i> CROSSE (40-50) N. Caledonia, fine ++	25.00
422	<i>sugimotoi</i> KURODA, 1928 (98-100) Taiwan, fine +	110.00
423	<i>sukhadwalai</i> DA M.-ROCKEL (34-37) Ind., nice n. sp., fine-gem	200.00
424	<i>sukhadwalai</i> DA MOTTA-ROCKEL (38-42) India, extra	280.00
425	<i>sulcatus</i> HWASS, 1792 (52-59) Philippines, fine +	3.00
426	<i>sulcocastaneus</i> KOSUGE (50-51) Philippines, fine +	45.00
427	<i>sulcocastaneus</i> KOSUGE (52) P.I., choc. banded, fine ++	60.00
428	<i>suratensis</i> HWASS, 1792 (70-82) Sri Lanka, fine-gem	8.00
429	<i>suturatus</i> REEVE, 1844 (28-36) Dampier Arch., gem	15.00
430	<i>taeniatus</i> HWASS, 1792 (18-24) Red Sea, nice pinkish, fine ++	6.00



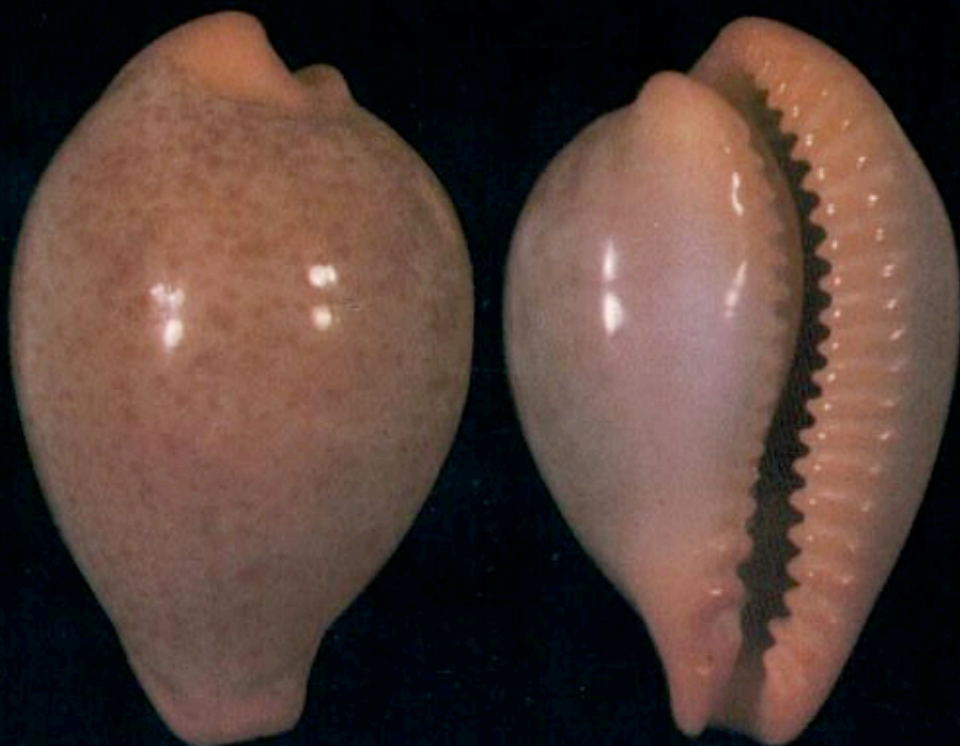


# THE CONNOISSEUR *of seashells*

PER LO SPECIALISTA IN CONCHIGLIE



POUR LE CONNAISSEUR DE COQUILLAGES



*Erronea (Adusta) barclayi*  
REEVE, 1857

GRANDE  
RARITÀ

EXTREMELY  
RARE

11

SEPTEMBER - OCTOBER  
SETTEMBRE - OTTOBRE 1986

GEMME del MARE

P.O. BOX 561 • ROMA 00187 (ITALY)

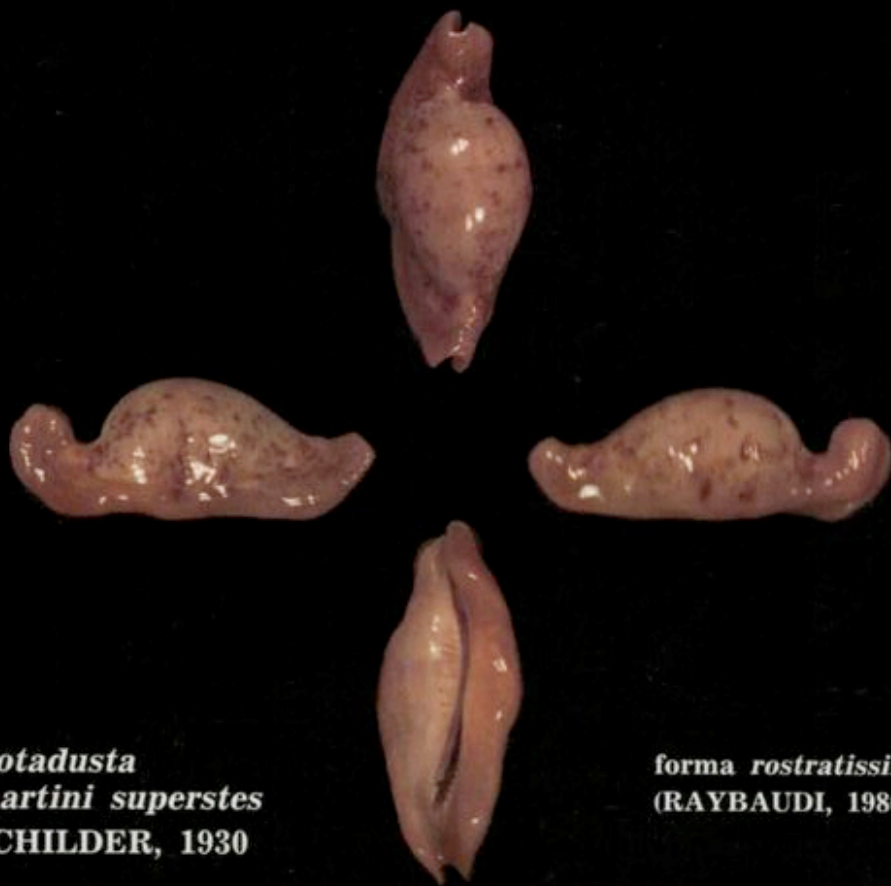






# THE CONNOISSEUR of seashells

PER LO SPECIALISTA IN CONCHIGLIE ● POUR LE CONNAISSEUR DE COQUILLAGES



*Notadusta  
martini superstes*  
SCHILDER, 1930

La massima rarità fra  
le «niger» della N.C.

*forma rostratissima*  
(RAYBAUDI, 1980)

The greatest rarity in  
the caledonian «niger»

12 DECEMBER 1986  
DICEMBRE

GEMME del MARE

P.O. BOX 561 ● ROMA 00187 (ITALY)



ASTE GEMME DEL MARE

227	<i>jeaniana jeaniana</i> (N.W. Austr. 65,5) unusual, brown base, rare, gem .....	450.000	300.000
228	<i>jeaniana jeaniana</i> (N.W.A. 73) beautiful dark col., superb .....	600.000	400.000
229	<i>jeaniana aurata</i> (N.W.A. 56) dwarf, orange base, orange dorsum, gem .....	450.000	300.000
230	<i>jeaniana aurata</i> (N.W. 75) special humped form, gem— .....	450.000	300.000
231	<i>jeaniana aurata</i> (N.W. 83) large, pyriform, gem— .....	450.000	300.000
232	<i>jeaniana aurata</i> (N.W. 91) giant, pyriform, gem— .....	500.000	350.000
233	<i>katsuae</i> (Phil. I. 15) a great rarity, superb. It will be sold at private treaty. Price on request .....	—	—
234	<i>katsuae</i> (Phil. I. 16) a great rarity, superb. It will be sold at private treaty. Price on request .....	—	—
235	<i>kieneri f. submelanica</i> (N.C. 16) very rare sp., gem .....	300.000	220.000
236	<i>kieneri f. submelanica</i> (N.C. 17,5) very rare sp., gem .....	300.000	220.000
237	<i>kuroharai</i> (Taiwan 41,5) very rare, glossy, superb .....	1.600.000	1.000.000



237                      238                      239                      240                      241



243

238	<i>kuroharai</i> (Taiwan 42,2) very rare, heavy, glossy, superb .....	1.600.000	1.000.000
239	<i>langfordi langfordi</i> (Japan 53,5) very nice, superb .....	1.600.000	1.000.000
240	<i>langfordi langf. f. philippina</i> (P.I. 51,5) wide, heavy sp. superb. It will be sold at private treaty. Price on request .....	—	—
241	<i>langfordi moretonensis</i> (Cape Moreton W.A. 59) very rare, large, gem. It will be sold at private treaty. Price on request .....	—	—
242	<i>lentiginosa</i> (India 24-34) set of 5 diff., gem .....	50.000	30.000
243	<i>leucodon</i> (Phil. I.) a very nice specimen. It will be sold on private treaty. Price on request .....	—	—
244	<i>leviathan</i> (Hawaii 61) f. <i>saturata</i> , gem .....	50.000	30.000
245	<i>leviathan</i> (Hawaii 70) very large, knobby sp., superb .....	80.000	60.000
246	<i>leviathan</i> (Hawaii 47) dwarf, rare, dark, superb .....	50.000	35.000
247	<i>limacina</i> (Indo-Pac. 19-29) set of 7 diff. loc. also rare, gem .....	50.000	35.000
248	<i>lurida lurida</i> (Mediterr.) a selected set of 15 diff. sp., gem .....	60.000	40.000
249	<i>lurida</i> (Gabon 25-38) set of 5 diff., fine .....	40.000	30.000
250	<i>lurida oceanica</i> (Ascension 30) very nice .....	50.000	35.000
251	<i>lurida oceanica</i> (Ascension 39) giant, gem .....	100.000	70.000
252	<i>lutea f. profunda</i> (W.A. 15-21) rare deep w. beautiful set of four, gem .....	80.000	60.000
253	<i>lynx f. subrostrata</i> (N.C. 38, 39, 42) set of 3 dark, nice, gem .....	350.000	250.000
254	<i>lynx f. rostrata</i> (N.C. 44) heavy, gem .....	450.000	320.000
255	<i>lynx f. rostrata</i> (N.C. 44) dark, tuberculated, rare. gem .....	450.000	320.000
256	<i>lynx f. hyperrostrata</i> (N.C. 52) large, heavy, superb .....	600.000	425.000

Segue sul N. 13

It follows on N. 13

GEMME DEL MARE AUCTION SALES



**ASTE GEMME DEL MARE**

012	<i>algoensis</i> : an extraordinary white form (Hermanus 21) very rare, superb .....	600.000	425.000
013	<i>algoensis</i> f. <i>batsatensis</i> (Batsata Rocks 21), gem .....	250.000	160.000
014	<i>algoensis</i> : f. <i>batsatensis</i> (West Coast 24) dark, rare from W.C., giant gem .....	425.000	280.000
015	<i>amphithales</i> : a beached sp. (Jeffreys Bay 26) never live collected .....	150.000	80.000
016	<i>amphithales</i> : a very good beached sp. (Jeffreys Bay 28,5) rare, nice item .....	300.000	175.000
017	<i>angustata angustata</i> : a beautiful set of 5 diff. col. (Port Mc Donnell) special, gem.	90.000	70.000
018	<i>annettae aequinoctialis</i> (Panama Gulf 34), gem .....	225.000	120.000
019	<i>annettae aequinoctialis</i> (Panama G. 39) large, dark sp., gem .....	325.000	170.000
020	<i>annettae aequinoctialis</i> (Panama G. 41) a giant, rare sp. gem .....	325.000	180.000
021	<i>annulus nouméensis</i> f. <i>hyperrostrata</i> (I. d'Ouen, N.C. 28,5) very rostrated, gem .	500.000	325.000
022	<i>annulus nouméensis</i> f. <i>hyperrostrata</i> (5 milles recif, 30) very rostr. sp., superb .	600.000	400.000
023	<i>arabica arabica</i> f. <i>nigerrima</i> (N. Caledonia 56,5) fully black, fantastic, very rare .	750.000	480.000
024	<i>arabica arabica</i> f. <i>nigerrima</i> (N. Caledonia 56,5) fully black, fantastic, very rare .	850.000	550.000
025	<i>arabica immanis</i> (Natal 86) rarely perfect, giant dark sp. gem .....	100.000	60.000
026	<i>arabica immanis</i> (Natal 89) rarely perfect, giant dark sp. gem .....	120.000	70.000
027	<i>arabica immanis</i> (Nossi Bé 95) rarely perfect, giant globose sp. gem— .....	130.000	85.000
028	<i>armeniaca</i> (Gr. Austr. B. 79) a fantastic colored sp. of this rarity will be sold by private treaty. Price on request .....	—	—
029	<i>asellus</i> f. <i>bougei</i> (N. Caledonia 16) well rostrated, rare sp. gem .....	400.000	300.000
030	<i>astaryi</i> (Marquesas I. 18,5) a beautiful large spec., small spots, superb .....	500.000	350.000
031	<i>aurantium</i> (Samar P.I. 89) very nice spec. good colour, gem— .....	600.000	400.000
032	<i>aurantium</i> (Samar P.I. 94) good colour, fine+ .....	450.000	320.000
033	<i>aurantium</i> (Samar P.I. 101) beautiful spec., nice colour, gem .....	750.000	575.000
034	<i>aurantium</i> (Samar P.I. 100,5) fantastic spec. dark colour, superb .....	900.000	700.000



35



37



43



035	<i>barclay</i> (Natal 20,5) a nice spec. -ex pisce- of this great rarity will be sold by private treaty. Price on request .....	—	—
036	<i>beckii</i> : interesting set from 5 diff. localities (Okinawa, Sulu, Solomons, Maldives, N. Caledonia rare) all gem .....	150.000	95.000
037	<i>bernardi</i> (Tahiti 13,8) a fantastic colourful sp., live collected, very rare, superb, will be sold by private treaty. Price on request .....	—	—
038	<i>boivini cuatoni</i> (Ph. I.) strange, subspecies or form, gem .....	150.000	100.000
039	<i>brevidentata brevidentata</i> (valid species): 3 diff. spec. (Broome) fine-gem .....	100.000	75.000
040	<i>broderipii</i> f. <i>somalica</i> (Somaliland) a superb, very large spec. of this rare species will be sold by private treaty. Price on request .....	—	—

**GEMME DEL MARE AUCTION SALES**



# THE CONNOISSEUR *of seashells*

PER LO SPECIALISTA IN CONCHIGLIE ● POUR LE CONNAISSEUR DE COQUILLAGES



*Conus adamsonii* BRODERIP, 1836

Una delle massime  
rarità fra i Coni

Among the rarest  
species in Cones

ISSN 0393-7682

13 FEBRUARY 1987  
FEBBRAIO

GEMME del MARE

P.O. BOX 561 ● ROMA 00187 (ITALY)







# THE CONNOISSEUR *of seashells*

PER LO SPECIALISTA IN CONCHIGLIE



POUR LE CONNAISSEUR DE COQUILLAGES



*Conus lohri* KILBURN, 1972

RACCOLTO VIVO  
RECORD DEL MONDO

LIVE TAKEN  
WORLD SIZE RECORD

ISSN 0393-7682

14

APRIL  
APRILE

1987

GEMME del MARE

P.O. BOX 561 • ROMA 00187 (ITALY)



# ? *Cypraeovula (Luponia) cohenae* BURGESS, 1965 ?



I due punti interrogativi posti ai lati del titolo vogliono indicare subito, inequivocabilmente, la mia perdurante perplessità sullo status di questo taxon.

Come è noto agli specialisti, nessun cipreologo (scienziato o semplice collezionista) ha sinora accettato come specie valida questa pur interessante endemica sudafricana e, se io fossi veramente, come qualcuno ha detto, un nemico giurato di C. M. Burgess, mi sarebbe estremamente facile gettare alle ortiche definitivamente la sua *Cypraea cohenae*.

Ma io ho sempre ritenuto e ritengo tuttora che, quando si discute su un taxon proposto da altri — chiunque esso sia — è doveroso impiegare la massima obiettività possibile. E a tale criterio mi sono attenuto nell'indagine che ho svolto su questo caso, dopo essermi procurato, non senza grande difficoltà, un numero cospicuo di queste rare conchiglie. Eccone la breve storia:

1964 - L. Kerr descrive per primo, ma in modo non valido - la «*cohenae*» su una pubblicazione sudafricana (*nomen nudum*).

1965 - C. M. Burgess la descrive più accuratamente su «*Nautilus*», ma sotto un genere erroneo (*Cypraea*). Egli la propone come *nova species*, basandosi soprattutto su di un elemento del tutto inventato: la «completa assenza» dei denti columellari. Elemento inesistente, che lo stesso Burgess ripete con molta disinvoltura su «*The Living Cowries*»... ma che poi è costretto a correggere nella sua II edizione.

1966-70 - Nessun cipreologo accetta tale nuova specie. La riporta solo lo Standard Catalog nel 1967, aggiungendo però, a scanzo di responsabilità, che «May be only a form of *edentula*».

1971 - Gli Schilders (che purtroppo non potevano disporre allora di esemplari raccolti vivi neppure di *fuscobrunnea*, *fuscodentata*, *edentula* ecc.) la riportano come probabile sottospecie (con *fuscodentata*!) della «*fuscobrunnea*» di Jeffreys Bay che oggi si chiama *castanea* (con sinonimo *verhoefti*).

1975 - J. Taylor e J. G. Walls la considerano anch'essi varietà di *fuscobrunnea*, seguendo evidentemente l'erronea classifica degli Schilders.

1979 - J. G. Walls e W. Burgess, correggendo la prima edizione commettono un secondo errore, indiscutibile, riportandola come ibrido di *edentula* ed *algoensis*.

The two question marks put at the sides of the title want to point out immediately and unequivocally my persistent perplexity on the status of this taxon.

As the expert know, no cowrist (man of science or collector) has till now accepted as valid this interesting South African endemic cowry. And if I really were, as someone has said, a sworn enemy of C. M. Burgess, it would be extremely easy to throw definitively off the urticas his *Cypraea cohenae*.

But I have always thought and still think that it is dutiful to be as much as possible objective when discussing on a taxon proposed by others, whoever is to do it. And I have conformed to such a criterion carrying out research into this case after getting with great difficulties a conspicuous number of these rare cowries. Let's follow here its brief story:

1964 - L. Kerr, first, but not exhaustively, describes «*cohenae*» on a South African publication (*nomen nudum*).

1965 - C. M. Burgess describes it more carefully on «*Nautilus*», but under a wrong genus (*Cypraea*). He proposes it as *nova species*, basing himself above all on a quite invented element: «the complete absence» of the columellar teeth. It is an inexistent element repeated by Burgess himself in a very off-hand manner on «*The Living Cowries*»... but afterwards he is compelled to correct it in his II edition.

1966-70 - No cowrist accepts this new species. Only the Standard Catalogue of 1967 mentions it but adding that «it may be only a form of *edentula*», to avoid any responsibility.

1971 - The Schilders (who unfortunately could not have live collected specimens either of *fuscobrunnea*, *fuscodentata*, *edentula* and so on at their disposal at that time) mention it as probable subspecies (with *fuscodentata*!) of the «*fuscobrunnea*» of Jeffreys Bay, called now *castanea* (with *verhoefti* as a synonym).

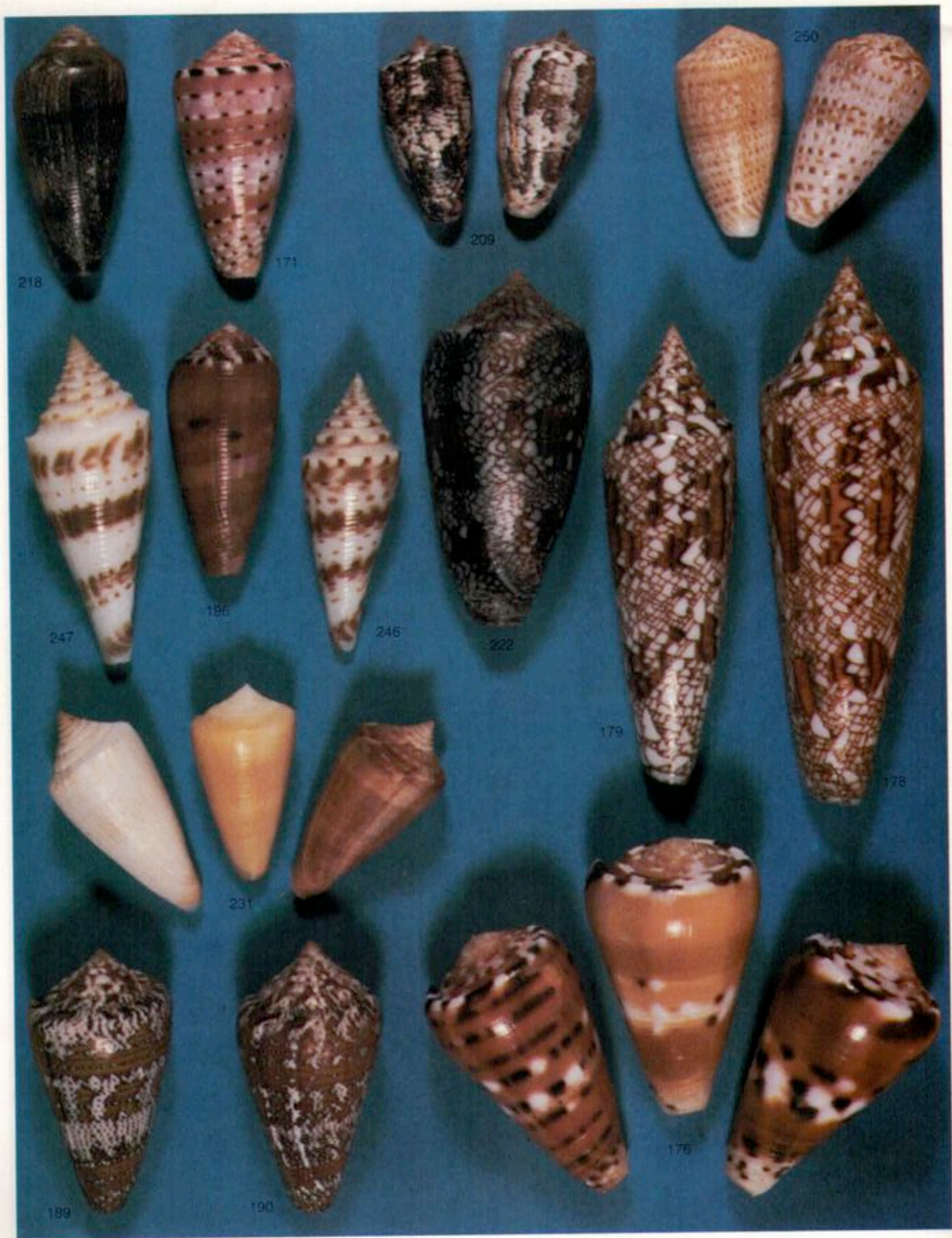
1975 - They also, J. Taylor and J. G. Walls, consider it as a variety of *fuscobrunnea*, following obviously the Schilders' erroneous classification.

1979 - In rectifying the first edition, J. G. Walls and W. Burgess make a second mistake, unquestionable, mentioning *cohenae* as a hybrid of *edentula* and *algoensis*.













**IN OGNI NUMERO  
SEMPRE NUOVE RARITÀ**

**IN EACH ISSUE  
ALWAYS NEW RARITIES**



bilmente da quella Lagrange Bay dove furono pescati i tre esemplari citati da C. Cate). Anni dopo un terzo esemplare lo ebbi quasi gratuitamente da un pescatore della M. G. Kailis Gulf Fisheries (Exmouth). Ed infine un quarto ed ultimo esemplare lo ebbi — come già raccontato su T.C. n. 11, pag. 24 - da un pearling diver di Kury Bay (Kimberley).

Come si vede due esemplari provengono dal Golfo di Exmouth, uno da una zona più a Nord terribilmente deserta (Great Sandy Desert) abitata sulla costa solo da aborigeni ed il quarto da una zona fantastica ma assai difficile a raggiungerci, anch'essa riserva aborigena. Il nome di *exmouthensis* aveva quindi per me una validissima indiscutibile conferma: altro che Nuova Caledonia!

And at last I had a fourth and last specimen by a pearling diver of Kury Bay (Kimberley) as already said on T.C. no 11, page 24.

As we can see, two specimens come from the Exmouth Gulf, one from an area more North, terribly desert (Great Sandy Desert) inhabited on the coast by the natives only. The fourth is from a fantastic but very difficult to be reached area, it too aboriginal reserve. So, in my opinion, the name of *exmouthensis* could validly and unquestionably be confirmed: surely not from New Caledonia!

*exmouthensis*



Fig. 5

*exmouthensis* f. *meridionalis*

Ma in anni successivi, un nuovo problema doveva sorgere per me, a scuotere le mie certezze. A Perth, da due scuba divers amici miei, ricevetti quattro conchiglie cedute mi come *exmouthensis* ma non esattamente identiche, anzi diverse, dalle 4 *exmouthensis* del Nord. Di colore intenso, molto simile a quelle del nord, queste 4 conchiglie sono più piccole, ed hanno disegni molto diversi, come può vedersi nella Fig. 5, riga inferiore. Non ho potuto conoscerne la provenienza esatta, perché i miei fornitori sono amici sì, ma gelosissimi delle loro zone di pesca. Tuttavia penso che queste 4 diverse *exmouthensis* o *pseudoexmouthensis* (sempre rare) siano state pescate sui 30/50 metri probabilmente tra Cervantes e Geograph Bay: ma non a Rottneest dove la *cribraria occidentalis* è particolarmente globosa, talvolta anche un pò scura, ma mai così bruno-nerastra.

But in the following years I had to face a new problem, which shook my certainties. In Perth I was given by two scuba divers friends of mine, four cowries as *exmouthensis*, not exactly identical but different from the fourth *exmouthensis* of the North. The colour of these four shells is deep, very similar to those of the North. They are smaller and have very different marks as we can see in Fig. 5, lower row. I have not been able to know their exact origin because my suppliers are friends but very jealous of their fishing area. Anyway I think that these four different *exmouthensis* or *pseudo-exmouthensis* (always rare) have been fished at 30/40 metres probably between Cervantes and Geograph Bay: surely not at Rottneest where *Cribraria occidentalis* is particularly globose, sometimes also a little dark but never so brown-blackish.



# THE CONNOISSEUR *of seashells*

PER LO SPECIALISTA IN CONCHIGLIE



POUR LE CONNAISSEUR DE COQUILLAGES



*Chicoreus (Chicoreus) boucheti*  
HOUART, 1983

GRANDE  
RARITÀ

EXTREMELY  
RARE

ISSN 0393-7682

15 16 JUNE-AUGUST  
GIUGNO-AGOSTO 1987

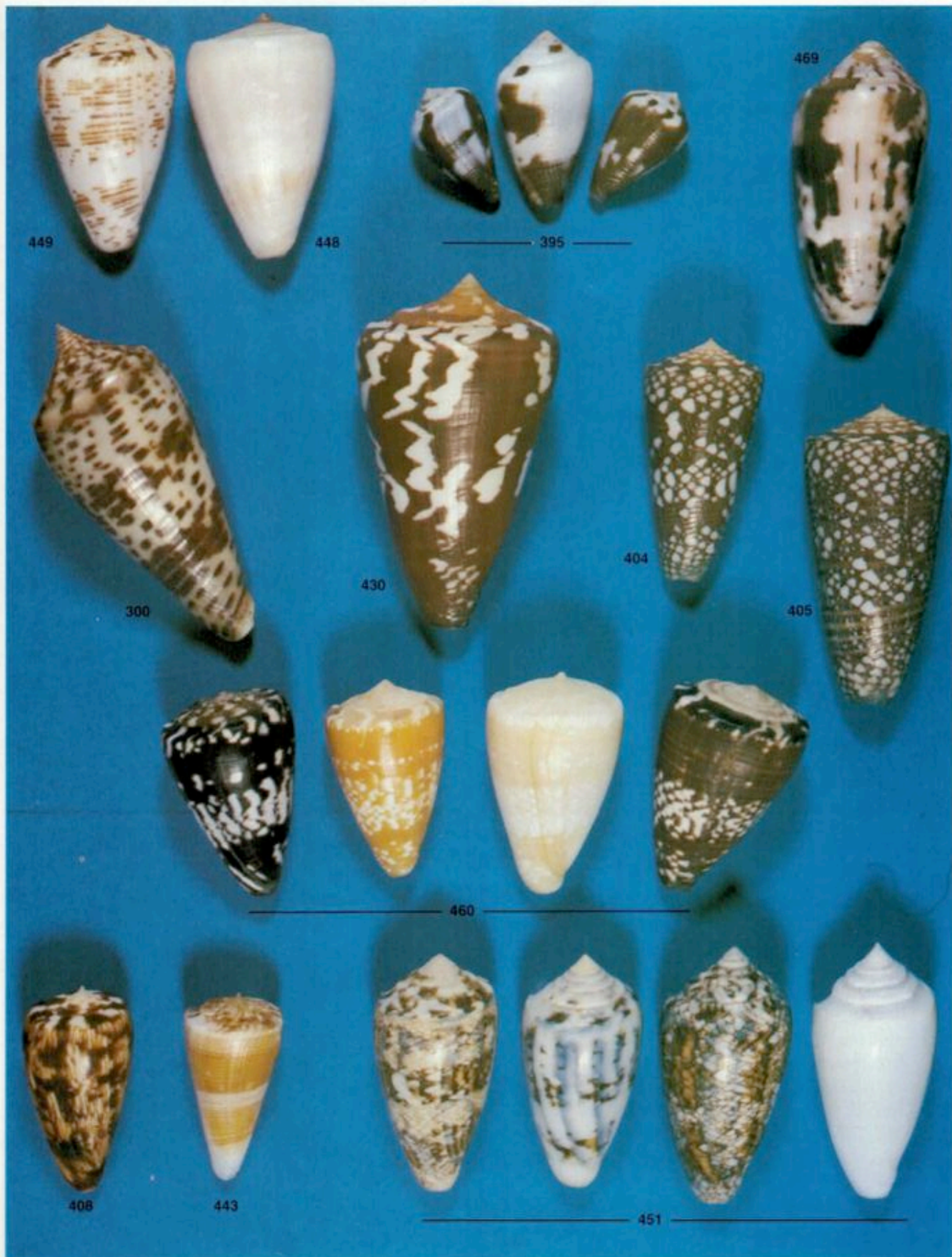
GEMME del MARE

P.O. BOX 561 • ROMA 00187 (ITALY)













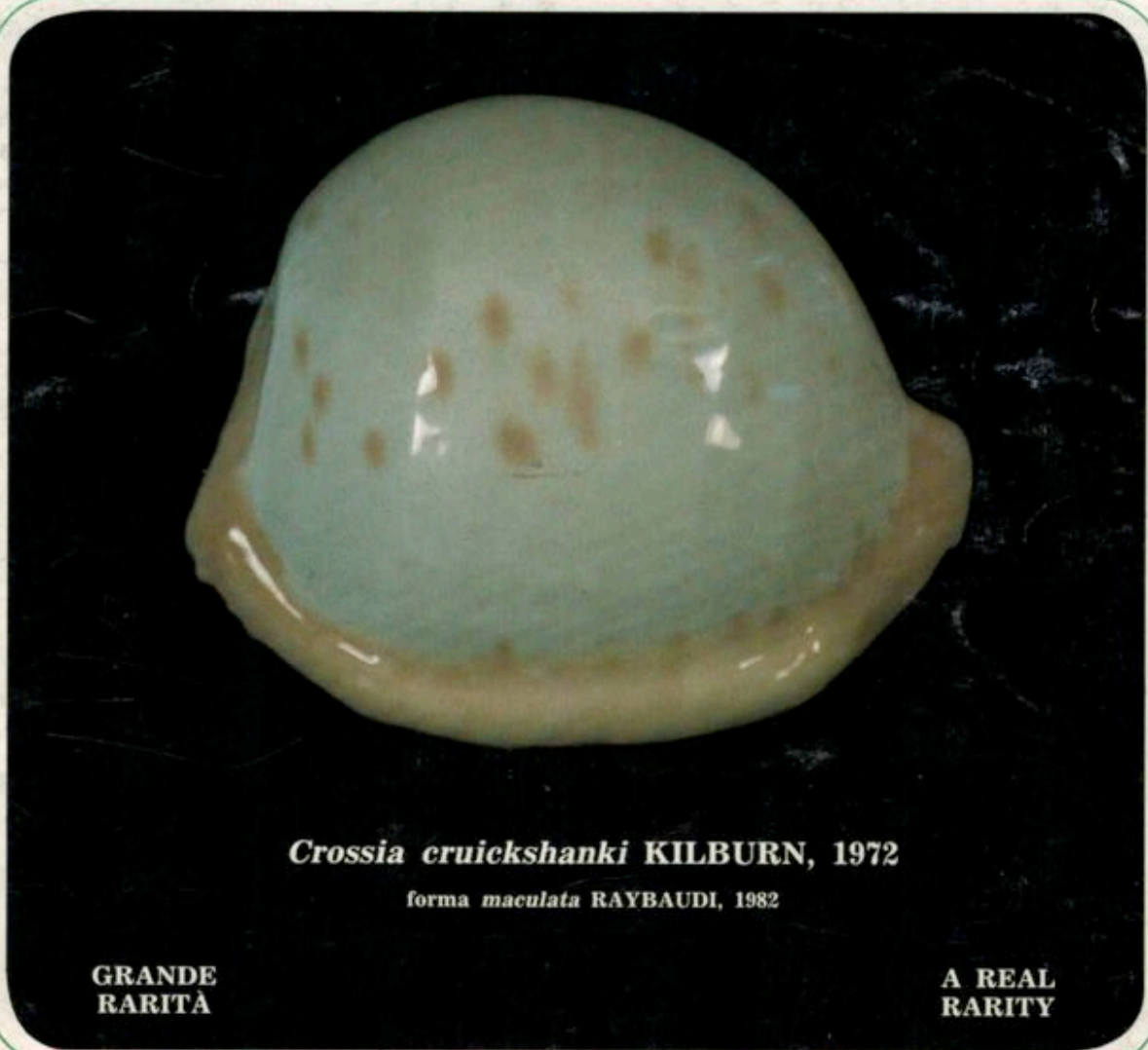






# THE CONNOISSEUR *of seashells*

PER LO SPECIALISTA IN CONCHIGLIE ● POUR LE CONNAISSEUR DE COQUILLAGES



*Crossia cruickshanki* KILBURN, 1972

forma *maculata* RAYBAUDI, 1982

GRANDE  
RARITÀ

A REAL  
RARITY

INVERNO  
WINTER 1988

17

GEMME del MARE

P.O. BOX 561 ● ROMA 00187 (ITALY)





PLATE I

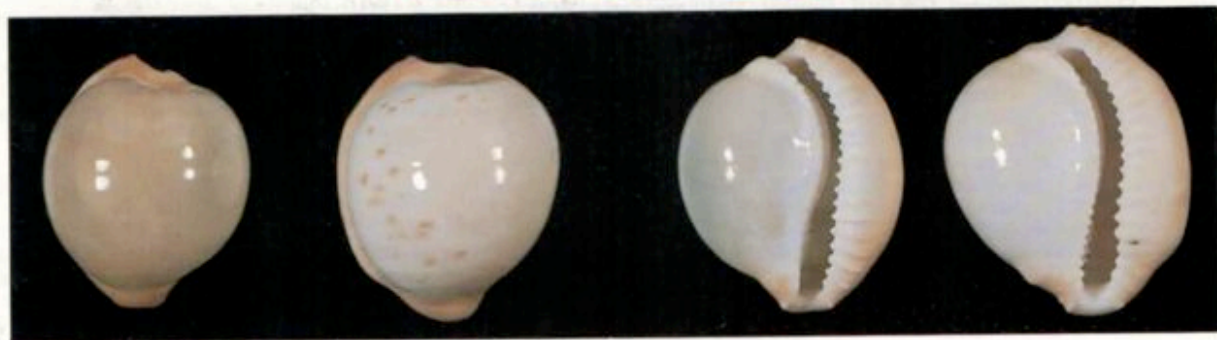




PLATE II



# CYPRAEIDAE



Genus *Crossia* SHIKAMA, 1974

	Locality	Length	C B/Pair	B Gd/Fine-	A F/Gem
83 - <i>Crossia cruickshanki</i> KILBURN, 1972	Natal	23-25	330.00	675.00	1.350.00
83a - forma <i>minima</i>	Natal	19-22	360.00	725.00	1.450.00
83b - forma <i>major</i>	Natal	26-30	350.00	700.00	1.400.00
83c - forma <i>maxima</i>	Natal	31-33	450.00	900.00	1.800.00
83d - forma <i>rosea</i> (RAY., 1980)	Natal	23-25	425.00	850.00	1.700.00
83e - forma <i>maculata</i> (RAY., 1982)	Natal	23-25	extremely rare		
83f - forma <i>juvenis</i>	Natal	23-25	125.00	250.00	500.00
83g - forma <i>deformis</i>	Natal	23-25	200.00	—	—

RANGE: Natal-Zululand      SYNONYMS: none



84A

84

84A

84

84 - <i>Crossia tu-tsui</i> SHIKAMA, 1974	E. Coast S.A.	25-27	625.00	1.250.00	2.500.00
84a - forma <i>minima</i>	E. Coast S.A.	23-24	675.00	1.350.00	2.700.00
84b - forma <i>major</i>	E. Coast S.A.	28-30	700.00	1.400.00	2.800.00
84c - forma <i>maxima</i>	E. Coast S.A.	31-35	750.00	1.500.00	3.000.00
84d - forma <i>saturata</i> (RAY, 1987)	E. Coast S.A.	25-28	1.000.00	2.000.00	4.000.00
84e - forma <i>solidior</i> (RAY., 1988)	E. Coast S.A.	25-28	1.250.00	2.500.00	5.000.00
84f - forma <i>juvenis</i>	E. Coast S.A.	25-27	—	—	—
84g - forma <i>deformis</i>	E. Coast S.A.	25-27	500.00	1.000.00	2.000.00
84A - <i>Crossia tu-tsui atlantica</i> RAYBAUDI, 1988	W. Coast S.A.	25-28	700.00	1.400.00	2.800.00
84Aa - forma <i>rosea</i> (RAY., 1988)	W. Coast S.A.	25-28	750.00	1.500.00	3.000.00
84Ab - forma <i>juvenis</i>	W. Coast S.A.	25-28	—	—	—
84Ac - forma <i>deformis</i>	W. Coast S.A.	25-28	700.00	1.600.00	2.000.00

RANGE: Transkei - Natal      SYNONYMS: none

REMARKS: N. 84 is a somewhat spotted, very light in weight, from very deep water; 84d is a deeply spotted one, more heavy, from deep water; 84A is a deep water species from the West Coast of Cape Peninsula, unspotted (= *f. immaculata* RAY., 1985)

Genus *acclarandum* (*Crossia* or *Luponia*?)

85 - ? - <i>connelli</i> LILTVED, 1983	E. Coast S.A.	25-26	extremely rare		
85a - forma <i>major</i>	E. Coast S.A.	27-28	extremely rare		
85b - forma <i>juvenis</i>	E. Coast S.A.	27-28	750.00	1.500.00	3.000.00
85c - forma <i>sphaerica</i> (RAY., 1988)	E. Coast S.A.	21-25	extremely rare		

RANGE: Transkei - Natal      SYNONYMS: none



# THE CONNOISSEUR *of seashells*

PER LO SPECIALISTA IN CONCHIGLIE



POUR LE CONNAISSEUR DE COQUILLAGES



*(Crossia?) connelli* LITVED, 1983

GRANDE  
RARITA

A REAL  
RARITY

PRIMAVERA 1988  
SPRING

18

GEMME del MARE

P.O. BOX 561 • ROMA 00187 (ITALY)







# THE CONNOISSEUR *of seashells*

PER LO SPECIALISTA IN CONCHIGLIE

● POUR LE CONNAISSEUR DE COQUILLAGES



*Conus (Textilia) vicweei* OLD, 1973

GRANDE  
RARITÀ

A REAL  
RARITY

ESTATE  
SUMMER 1988

19

GEMME del MARE

P.O. BOX 561 • ROMA 00187 (ITALY)







# THE CONNOISSEUR *of seashells*

PER LO SPECIALISTA IN CONCHIGLIE ● POUR LE CONNAISSEUR DE COQUILLAGES



*Entemnotrochus rumphii* SCHEPMAN, 1879

GRANDE  
RARITÀ

EXTREMELY  
RARE

AUTUNNO 1988    INVERNO 1989  
AUTUMN        WINTER

20

GEMME del MARE

P.O. BOX 561 • ROMA 00187 (ITALY)









601

104

104

602

405

603

603

603

603

149

150

604

605

606

607

607



152A



21



257

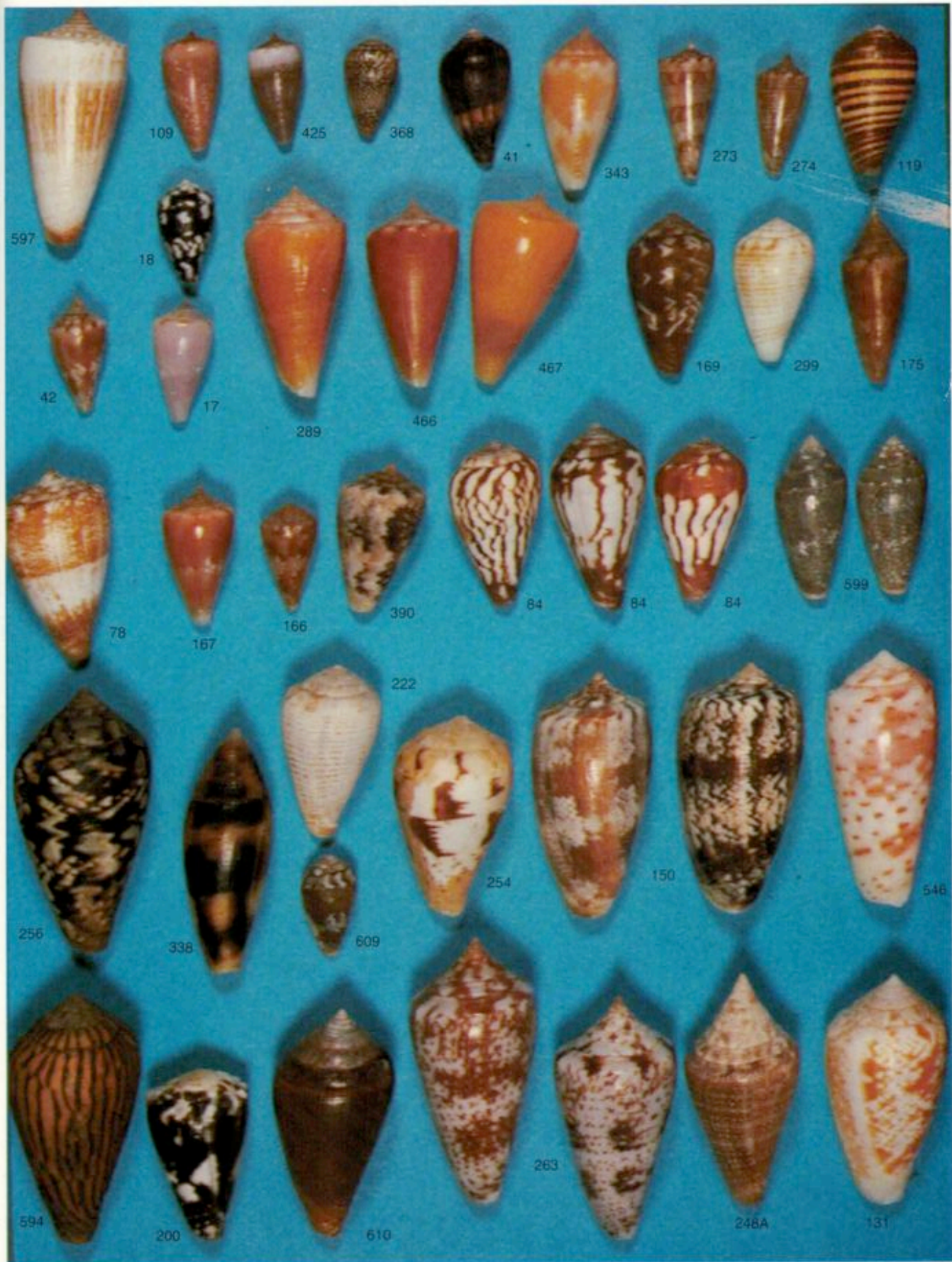


63











# THE CONNOISSEUR *of seashells*

PER LO SPECIALISTA IN CONCHIGLIE



POUR LE CONNAISSEUR DE COQUILLAGES



*Conus (Profundiconus) lani* CRANDALL, 1979

POCHI ESEMPLARI  
CONOSCIUTI

FEW SPECIMENS  
KNOWN

PRIMAVERA  
SPRING 1989

21

GEMME del MARE

P.O. BOX 561 • ROMA 00187 (ITALY)





36

82

24

19

21

72

27

98

54

23

92

56











# THE CONNOISSEUR *of seashells*

PER LO SPECIALISTA IN CONCHIGLIE



POUR LE CONNAISSEUR DE COQUILLAGES



*Cypraea (Cypraea) amphithales* MELVILL, 1888

RACCOLTA VIVA  
RARISSIMA

LIVE COLLECTED  
VERY RARE

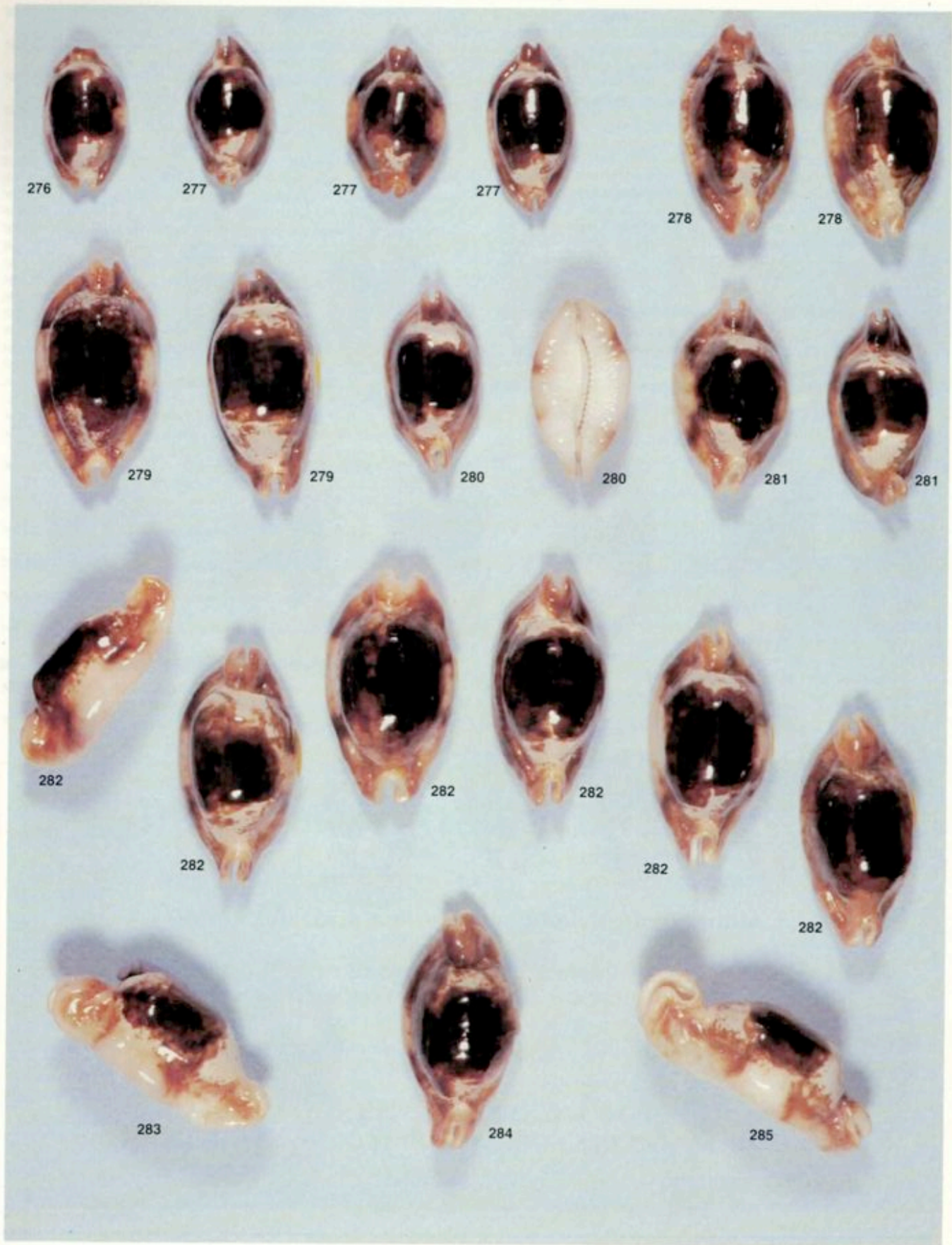
ESTATE-AUTUNNO  
SUMMER-AUTUMN 1989

22

GEMME del MARE

P.O. BOX 561 • ROMA 00187 (ITALY)













158

117

115

137

24

144

106

139

124

116

125

102

156

121

154

146

110

126

147

135A







# THE CONNOISSEUR *of seashells*

PER LO SPECIALISTA IN CONCHIGLIE



POUR LE CONNAISSEUR DE COQUILLAGES



*Barycypraea fultoni amorimi* RAYBAUDI, 1989

GRANDE  
RARITÀ

EXTREMELY  
RARE

INVERNO 1989-90  
WINTER 1989-90

23

**GEMME del MARE**

P.O. BOX 561 • ROMA 00187 (ITALY)





68



44 RRR



17



135



82



70



77



78



76



114



139A



111



110



112



28



48



69



75



RRR

Z316



41



# *Barycypraea fultoni* SOWERBY 1903

Luigi Raybaudi Massilia



(da varie collezioni italiane)

Fig. 1 *Barycypraea fultoni fultoni*, *mozambicana*

(from few Italian collections)

Sullo stesso argomento è stata pubblicata sette anni or sono la mia Scheda n. 23, con tutte le notizie sino ad allora disponibili su questa rara conchiglia. Quella scheda fece molta impressione nel mondo dei cipreisti, perché era illustrata da ben cinque esemplari e recava notizie sugli otto esemplari della mia collezione: un numero allora assolutamente impensabile.

In quello studio, il più accurato possibile, puntualizzavo che le *fultoni* provenivano tutte *ex piscibus* e tutte da una zona ristretta del Natal, contestando altre errate o false provenienze più meridionali.

Dopo sette anni le notizie che davo sulle *fultoni* del Natal (le uniche allora conosciute) sono tuttora attuali ed il mio record di lunghezza (mm. 68,5) resiste tutt'ora.

Ma in questi anni qualcosa di nuovo, molto importante, si è verificato: da quando un peschereccio russo, autorizzato a pescare nelle acque del Mozambico ha dragato qualche esemplare di *fultoni*, che chiamerò *f. mozambicana*.

Tre esemplari mi vennero offerti nel 1987, fra cui un

My Card no. 23 concerning the same topic and containing all the information till then available about this rare cowry was published seven years ago. That card arouse a really good impression among cowrists either as it was illustrated by as many five specimens or as it informed them of the eight specimens' of my collection: then it was an absolutely unthinkable number.

In that study, as much careful, I pointed out that *fultoni* came all *ex piscibus* and all of them from a restricted area of Natal, denying either wrong or false more Southern reports.

After seven years the information I gave about *fultoni* of Natal (the only ones then known) is still present and the record of length I established (mm. 68,5) still last.

But in these years something new, very important, has happened: I am referring to a Russian fishing boat, authorized to fish into the waters of Mozambique, which has dredged some specimens of *fultoni* that I will call *f. mozambicana*.



# THE CONNOISSEUR *of cowries*

PER LO SPECIALISTA IN CIPREE •

POUR LE CONNAISSEUR DE PORCELLAINES



*Luponia castanea* HIGGINS, 1868

RACCOLTA VIVA  
È RARISSIMA

LIVE COLLECTED  
IS VERY RARE

24

SEPTEMBER  
SETTEMBRE 1990

Dr. LUIGI RAYBAUDI MASSILIA  
P.O. BOX 547 - ROMA 00187 (ITALY)

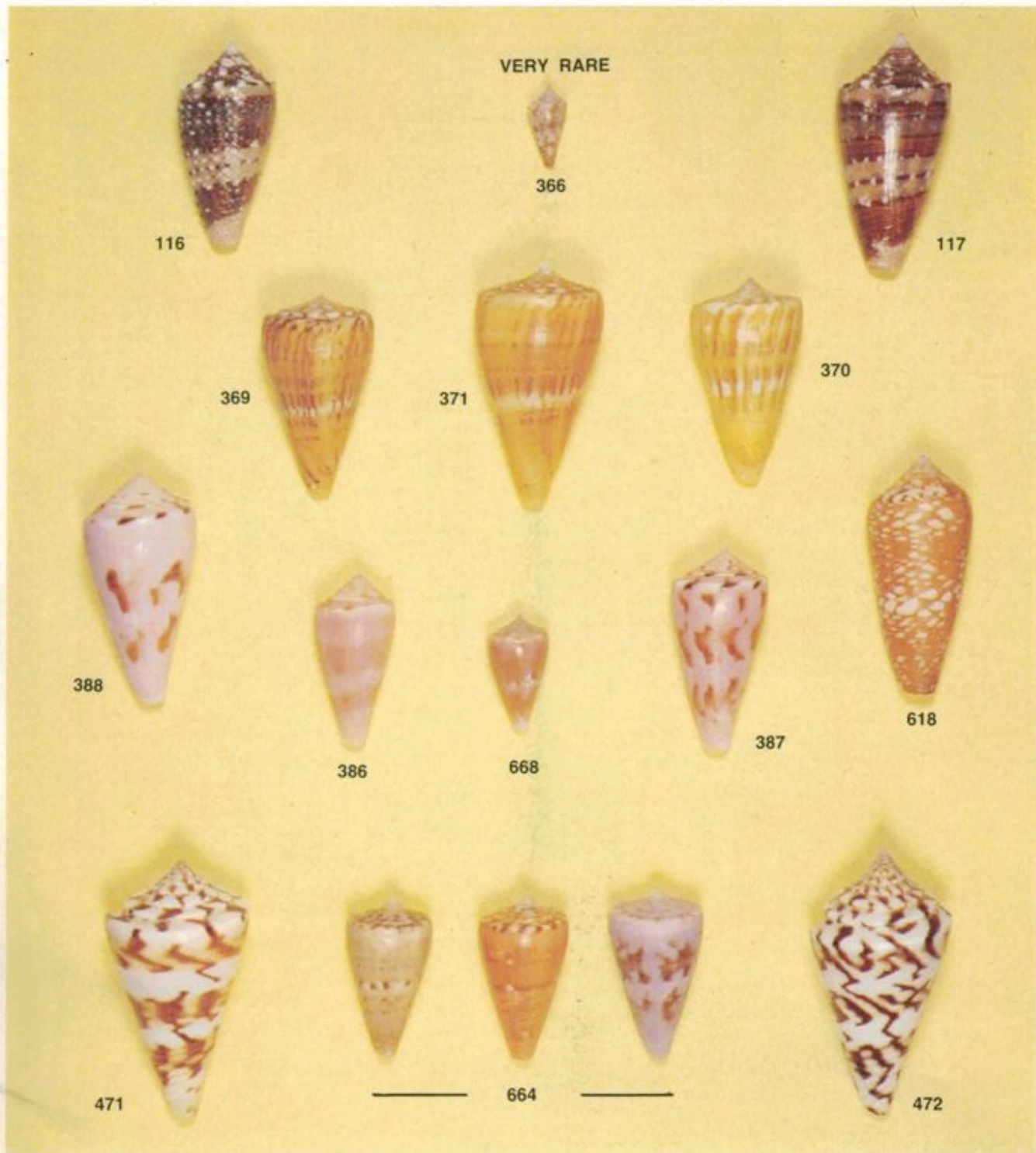






# CONIDAE

1







808



809



810



811



243



812



243



468



760



467



Non escludo per questa lista di Coni, qualche errore di classifica e me ne scuso in anticipo. Appena possibile seguiranno le Liste CONIDAE 2 3 4, dove saranno offerte migliaia di coni pregevoli fra cui vari esemplari di:

*hirasei*  
*julii, vivi*  
*lorhy*  
*kawamurai*  
*kalafuti, vari col.*  
*milnedwardsi*  
*patae*  
*plintis*

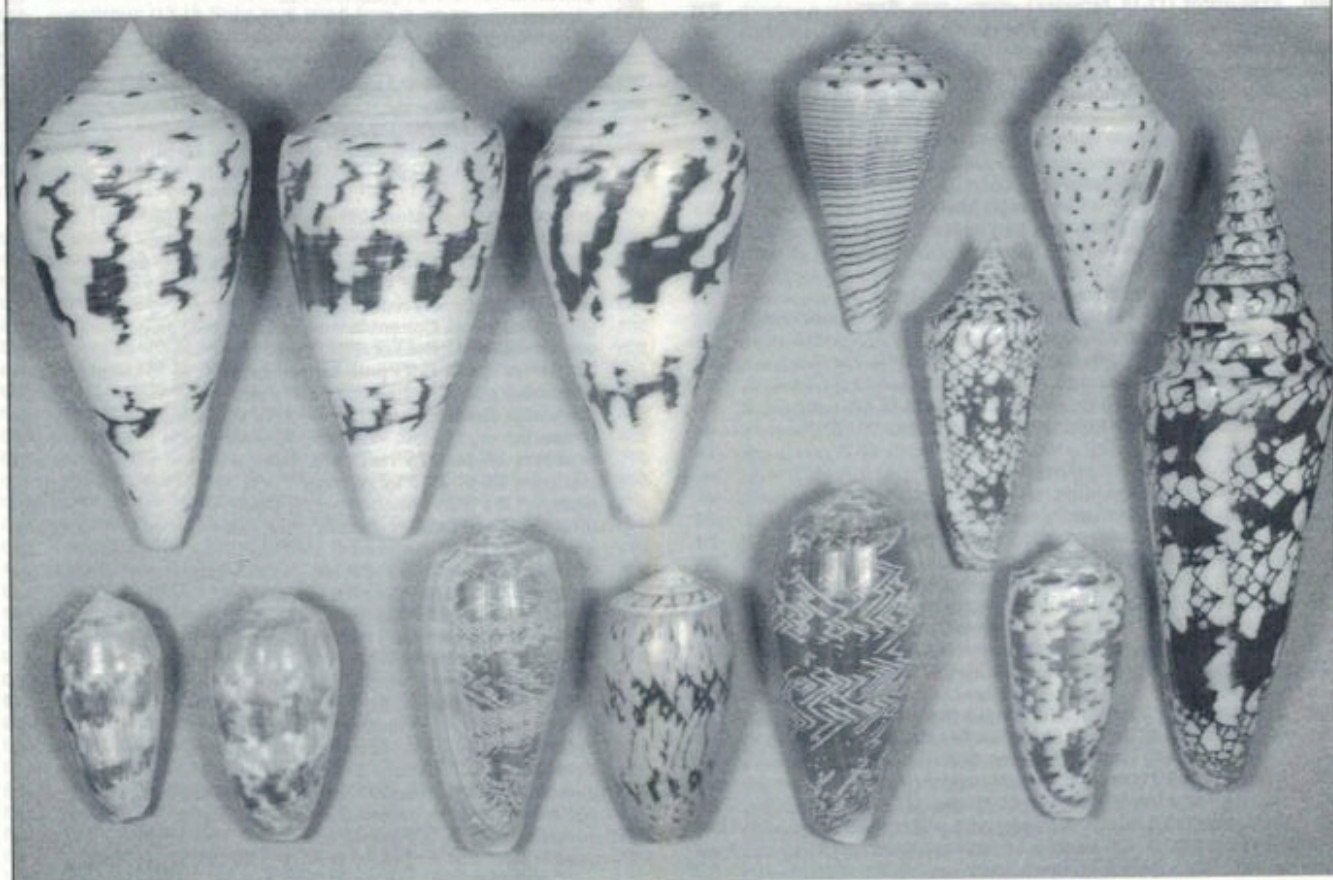


*adamsoni*



*richeri*

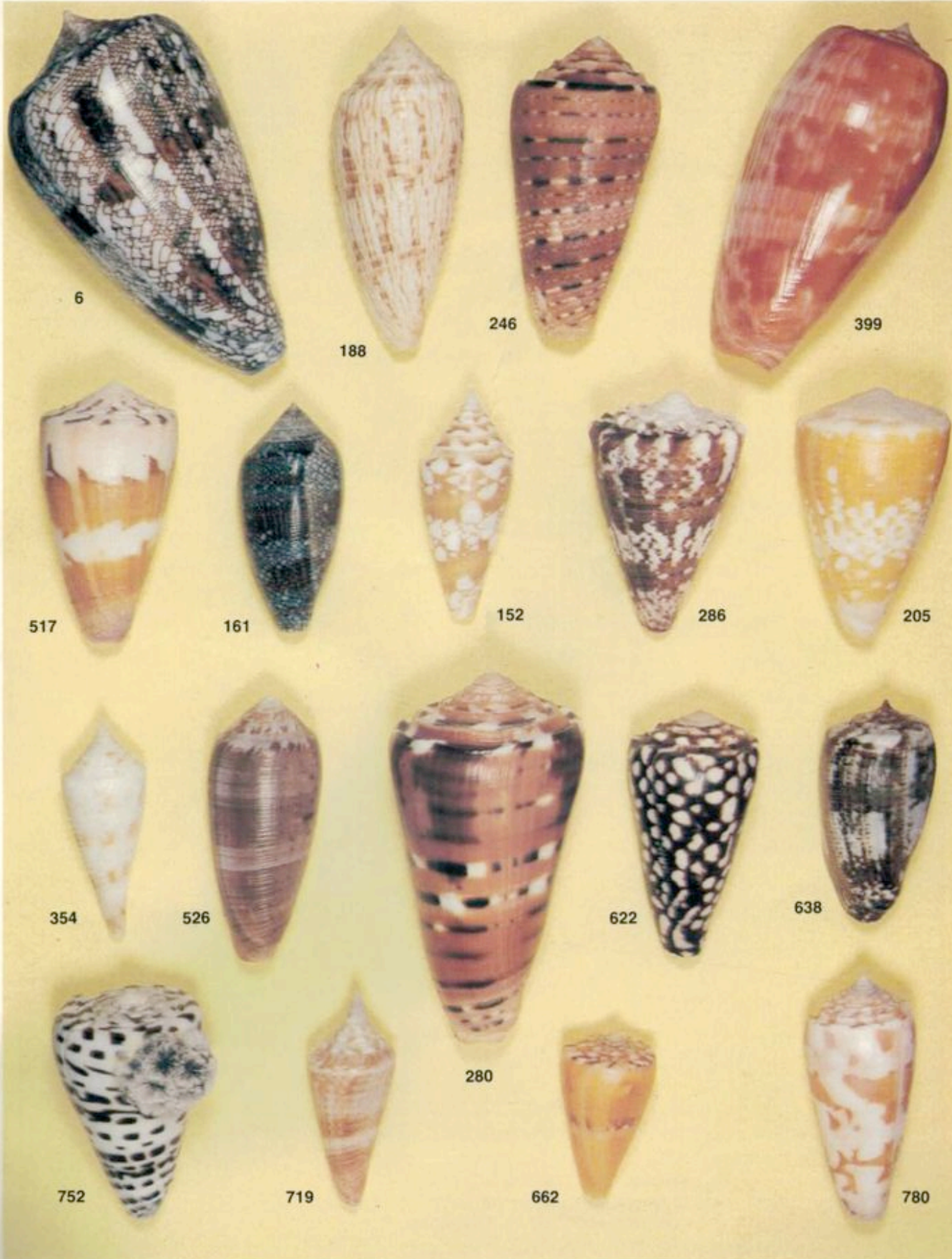
*pergrandis*  
*richeri*  
*stupella*  
*sunderlandi*  
*thailandis (speciali)*  
*timorensis, W. record*  
*vickweei*  
*ecc. ecc.*



**PROSSIME LISTE:** sono in corso di elaborazione varie altre Liste per le seguenti famiglie: Pleurotomariidae (importantissima), Haliotidae (notevole), Patellidae (eccezionale), Xenophoridae (interessante), Strombidae (pregevole), Ovulidae (avanzata), Olividae (completa), Mitridae (importante), Marginellidae (avanzata), Terebridae (discreta), Pectinidae (formidabile), nonché ricche liste di Miscellanea (bivalvi compresi).

**RICORDO PERÒ CHE LE PROSSIME LISTE SARANNO INVIATE SOLO A CHI AVRÀ DIMOSTRATO CONCRETAMENTE DI APPREZZARE QUESTO PRIMO GRUPPO DI QUATTRO LISTE.**





6

188

246

399

517

161

152

286

205

354

526

622

638

752

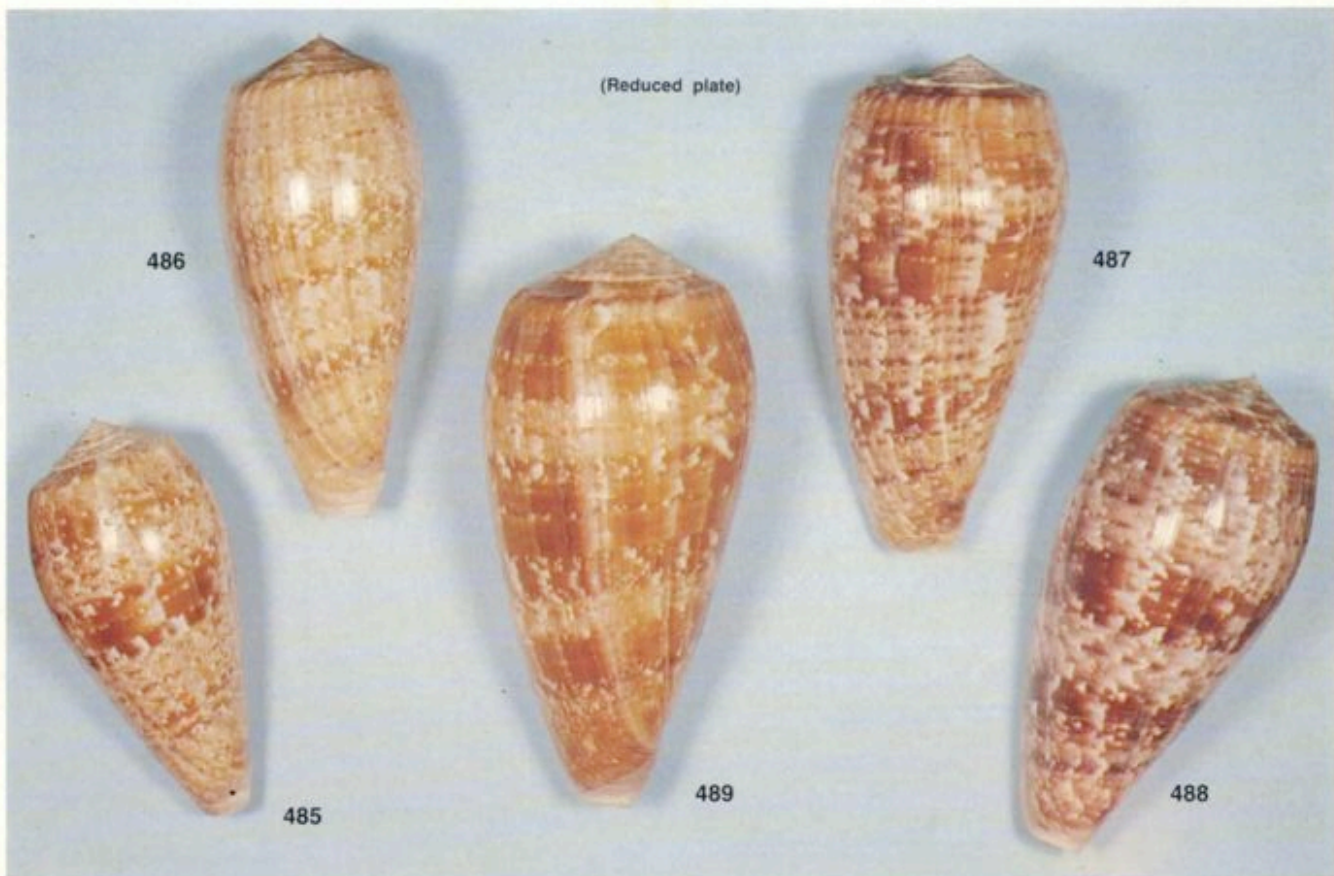
719

280

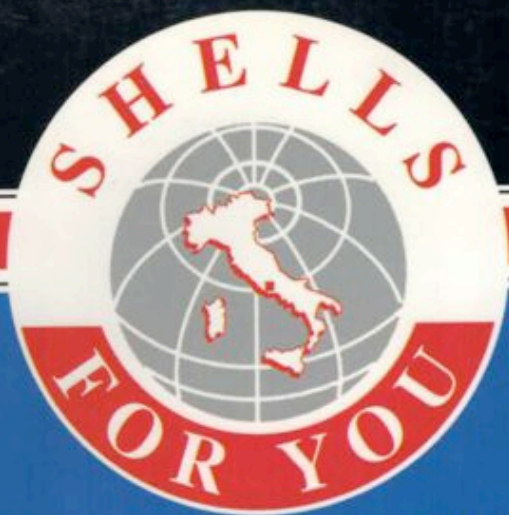
662

780









FIVE GREAT RARITIES



*E.(R.) caputserpentis*  
f. *rostrata* (35)



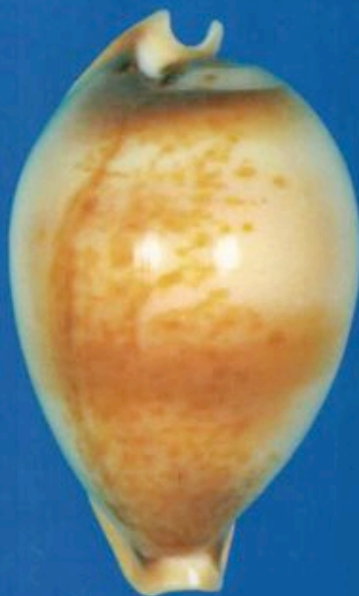
*L. castanea*  
live coll. (34,2)



*N. teramachii*  
f. *splendida*



*M. (M.) mauritiana*  
f. *nigerrima* (83)



*N. teramachii*  
live coll. (64,2)







*thailandis*

da 100  
a 700





FIVE GREAT RARITIES



*Cymbiola cymbiola*  
(live coll.)



*V. duponti*  
(live coll.)



*Zoila mariellae*  
(extremely rare)



*P. atlantica*  
(gem)



*P. atlantica*  
(fine)

INSERTO REDAZIONALE

di WORLD SHELLS

CONCHIGLIE



PER TUTTI





290

291 var.

292

292b

290	<i>krabiensis</i> da Motta, 1982, Thailand, 45-50 . . . . .	20	30
	<i>kraussi</i> Turton, 1932 = <i>tinianus</i>		
291	<i>kulkuncan</i> Petuch, 1980 Honduras, 27-30 red . . . . .	115	160
	291a <i>kulkuncan</i> Petuch, 1980 Honduras, 25-30 large . . . . .	115	160
	291b <i>kulkuncan</i> Petuch, 1980 Honduras, 35-37 large . . . . .	190	250
292	<i>kuroharai</i> Habe, 1965, Balut, 50-55 dark . . . . .	80	120
	292a <i>kuroharai</i> Habe, 1965, Balut 56-60 dark . . . . .	100	150
	292b <i>kuroharai</i> Habe, 1965, Balut 50-57 freak (turr.) . . . . .	120	175
293	<i>kurzi</i> Petuch, 1974 Guam, 25-27 . . . . .	175	275



## CYPRAEIDAE

Non abbiate fretta. Stiamo preparando la nostra grande QUICK LIST e la nostra favolosa Vetrina di Natale. Cominciate a risparmiare!

Intanto, poiché stiamo preparando una grande collezione specializzata in Cipree (ed una per Coni), possiamo, se volete, prepararne una anche per Voi, garantendovi conchiglie di qualità, perfettamente classificate, ai prezzi normali di mercato con uno sconto medio del 10-15% e con pagamento rateale. Consegna verso il 15 di Settembre.

Dont's be in a hurry. We are preparing our large QUICK LIST and our fabulous Christmas window. Start saving up!

In the meantime, since we are preparing a large specialized cowrie collection (and one of Cones), we can, if you wish, prepare one for you also, guaranteeing you quality shells, perfectly classified, at normal market prices, with an average discount of 10-20% and with an instalment payment plan. Foreseen delivery time: around September 15th.

Collezioni specializzate

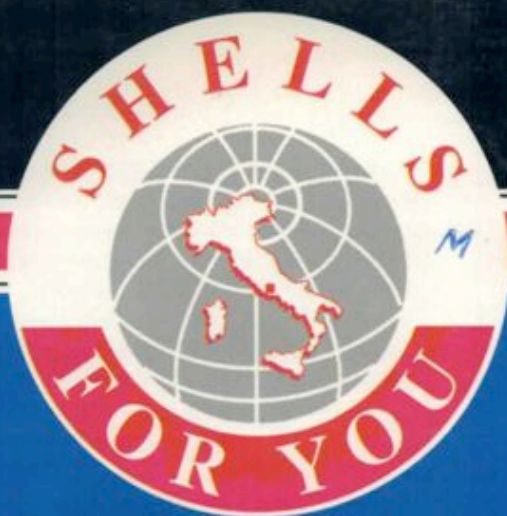
CYPRAEIDAE

Specialized collections

A: Val. 3.000.000 - 10%	=	2.700.000 in 4 mesi
B: Val. 5.000.000 - 10%	=	4.500.000 in 6 mesi
C: Val. 10.000.000 - 15%	=	8.500.000 in 8 mesi
D: Val. 20.000.000 - 15%	=	17.000.000 in 12 mesi

Garanzia assoluta di WORLD SHELLS S.r.l. - Roma





FIVE GREAT RARITIES



*N. hirasei*  
Philippines



*N. hirasei*  
Japan



*Z. (Z.) friendii*  
golden form



*S. langfordi*  
*moretonensis*



*L. broderipii*  
*somalica*

PRICE ON REQUEST

INSERTO REDAZIONALE

di WORLD SHELL

CONCHIGLIE



PER TUTTI





117 *sertacinctus* (31,4) ..... 700  
special



118 *puchetensis* (75,5) ..... 500  
large



119 *pictus* (54) ..... 900  
live w/o



120 *hirasei* (50,5) ..... 900



121 *deburghiae* (66,3) ..... 1.000  
very rare



122 *ranonganus* (65) ..... 1.200  
spec. pattern



123 *gauguini* (73) ..... 600  
wide, heavy



124 *excelsus* (85) ..... 1.100  
large



125 ? (64) ..... 700





108 *marmoreus* (80,5) ..... 380  
N.C. special



109 *excelsus* (84,5) ..... 1.200  
dark



110 *gauguini* (60) ..... 875  
blackish, rare



111 *optimus* (38,8) ..... 300  
N.C. gem



112 *cedonulli* (50) ..... 900  
(groupe) RRR



113 *lohri* (49) ..... 600  
large (fine+)



114 *gloriamaris* (130) ..... 950  
dark



115 *vicweei* (70) ..... 1.700  
large, extra



116 *thomae* (68,3) ..... 500