



ROSSITE & BIO-ROSS

The Legendary
Rossite
Granulated Drain Cleaner



Danger—Contains Caustic Soda!

This product is produced solely for use by professional plumbing contractors and specifically should not be used by unqualified consumers.

Those who resell these products should be covered by their OWN product liability insurance.



There is nothing like it! Rossite goes further and cleans drains better. Will not crystallize.

Rossite is made from an exclusive and PATENTED formula that has been developed for the particular use of the plumbing trade. Plumbers prefer it because **Rossite** boils its way through obstinate stoppages with a Rapid Triple Action that does twice the work in half the time...and **without disagreeable odors.**

Scientific tests prove that **Rossite** is better!

Tests prove **Rossite** is the only product on the market that will, when activated, maintain a temperature of **200° or more**—for over 12 minutes! This is the real secret to **ROSSITE's** success.

Rossite is poured directly into the drain. Followed by a little water, it will open and clear stoppages caused by hair, lint, vegetable matter, grease, etc. Also **very effective for thawing frozen drains, stacks and flush tanks.** **Will not harm enamelware, pipes and connectors.**

Do not use in disposers or on aluminum. Always flush with cold water.

SOLD IN QUANTITIES OF 12 ONE POUND CONTAINERS ONLY.

Item #	Description	Pkg Qty	Price 1	Price 2
80-401	1 lb. Containers	12	10.17	8.95

ROSSITE & BIO-ROSS

BIO-ROSS™ WASTE ELIMINATION ENZYME



OVER 100 TREATMENTS PER CAN

\$49.95 SUGGESTED
RETAIL PRICE PER CAN

LESS THAN 50 CENTS PER
APPLICATION FOR YOUR
CUSTOMERS TO SAVE THEM
AGGRAVATION AND HUNDREDS OF
DOLLARS IN DAMAGES AND REPAIR

SOLD DIRECT TO CONTRACTORS

SIX 2LB CONTAINERS AND SALES
LITERATURE PER CASE

FREE PERSONALIZED PRIVATE
LABEL INCLUDED



Safe for
Septic
Systems

Bio-Ross™ is comprised of 8 unique synergized bacterial strains and each 2 lb. container has over 4.5 trillion enzyme producing bacteria, which far surpasses any other similar product on the market. **Bio-Ross™** produces enzymes which eliminates all types of grease, fat, oils, modern synthetic detergents, cleaners, soaps and toilet paper from the drain system. Best of all, **Bio-Ross™** is completely safe.

A SAFE, ECONOMICAL AND MUCH MORE EFFECTIVE
WAY TO CLEAN AND PREVENT SLOW DRAINS AND
INCREASE YOUR CASH FLOW!

SOLD 6 PER CASE ONLY

Item #	Description	Pkg Qty	Price 1	Price 2
80-808	BIO-ROSS — 2 lb. Container	6	16.99	14.95

DRAIN CLEANERS

CHEMICALS
COMPOUNDS, TOOLS
UTILITY & HVAC



STRIP CLOSET BOWL & URINAL CLEANER

REMOVES SCALE

The sure way to eliminate SCALE, LIME, RUST, SODIUM, MAGNESIUM, CALCIUM, URINARY SALTS, CONCRETE, PLASTER, or other water-bearing solids. DESTROYS ODORS.

STRIP, with RODINE 213, does not affect metals (except aluminum) and is harmless to vitreousware, pipes, and connections. Chrome plate and nickel WILL tarnish if not rinsed off immediately.

STRIP can be used full strength or diluted, depending on the cleaning application and the amount of deposit to be removed.

For Urinals and Toilet Bowls: Remove standing water. Pour about 12 ounces of STRIP into bowl and allow to stand 10 to 15 minutes. If stains and urinary deposits are also on the sides and under the flush rim, use a small hand mop or a rag wrapped around a toilet brush to clean the stained area. FLUSH THE BOWL SEVERAL TIMES.

For General External Cleaning: Place part or equipment to be cleaned in a glass, porcelain, crockery, or plastic container and cover completely with STRIP. Allow part to remain 15 minutes or until part is clean. In cleaning parts that are impractical to immerse, use a brush or mop to thoroughly apply STRIP until deposit or stain has been removed. WASH THOROUGHLY WITH WATER.

For General Internal Cleaning: For cleaning items such as hot water coils, unit heaters, etc., introduce STRIP through the appropriate opening. If this is not practical, a piece of pipe or tubing can be attached and filled with STRIP. When part is clean, DRAIN AND FLUSH WITH WATER.

For Cleaning Brick and Tile: Prepare a solution containing 1 part STRIP and 4 parts water. Use a brush dipped in the solution to scrub brick or tile facing. Wear goggles. USE RUBBER GLOVES and protect person and clothing. Do not apply to mortar. WASH THOROUGHLY WITH WATER.

OUR GUARANTEE—
You must be satisfied.

SOLD IN
QUANTITIES OF
12 ONE QUART
CONTAINERS ONLY.

Item #	Description	Pkg Qty	Price 1	Price 2
80-140	STRIP in Quarts	12	12.44	10.95
80-295	Closet Bowl Swabs	5	1.51	1.33



ROOTROL ROOT ELIMINATOR



CONTAINS COPPER SULFATE WHICH IS NOT ALLOWED IN ALL AREAS. PLEASE CHECK YOUR LOCAL CODES

ROOTROL is the wonder-working chemical for eliminating ROOT and FUNGUS growth. In most cases it gives complete satisfaction overnight. ROOTROL is another exclusive creation formulated only by us. It is harmless to the skin and clothing as it contains no caustic soda. ROOTROL is readily assimilated by ROOTS, which become paralyzed. After a short while decomposition takes place, causing the roots to slough away like rusty water.

ROOTROL has a spreading action like oil on water and will coat the entire inside of pipe through which it flows, that way affecting growth entering from top or bottom of sewer line.

One can is usually sufficient for most jobs. 2 lb. can.

SOLD IN
QUANTITIES OF
12 TWO POUND
CONTAINERS ONLY.

Item #	Description	Pkg Qty	Price 1	Price 2
80-155	2 Lb. Container	12	22.67	19.95

LIQUID ALIVE BACTERIA

WITH INSTANT ODOR CONTROL

LIQUID ENZYME TREATMENT!

NON-CAUSTIC

FOR WEEKLY DRAIN LINE MAINTENANCE

DIGESTS AND LIQUEFIES WASTE PLUS IMMEDIATE MALODOR NEUTRALIZATION

ADVANTAGES

- Digests organic waste
- Non-toxic
- Eliminates strong odors
- Liquefies fats, proteins, carbohydrates & grease
- Harmless to marine & animal life
- Produces aerobic & anaerobic enzyme strains
- Excellent shelf life
- Use after any "caustic" or "sulfuric acid" cleaner to eliminate odor instantly
- Non-acid or alkaline
- Non-pathogenic
- Good initial odor control
- Reduces BOD & COD
- Harmless to plants
- Easily applied
- Contains no additives—100% effective

AREAS OF USE

Grease Traps	Drains & Mains	Septic Tanks	Porta-Toilets
RV Toilet Tanks	Marine Toilet Tanks	Cesspools	Drains Fields
Sump Pumps	Dry Wells	Ponds	Lagoons
Holding Tanks	Sewage Waste Plants	Industrial Waste Plants	Homes

RECOMMENDED FOR

Feed Lots	Homes	Hog Parlors	Stockyards
Veterinarians	Commercial Buildings	Pulp & Paper Mills	Hotels
Public Restrooms	Dairy Industries	Apartment Complexes	Motels
Food Processing Plants	Nursing Homes	Ranches	Farms
Oil Field Slushpits	Boats & Marinas	Hospitals	Zoos
Restaurants & Cafeterias	Institutions/Schools	Municipalities	Plants

LIQUID ALIVE is a suspension treatment consisting of specially developed bacteria, aerobic, anaerobic, and facultative in nature. The bacteria are harmless to animal and marine life and are non-pathogenic. **They eliminate the foul odors** and gases it produces. **LIQUID ALIVE** not only masks odors, it eliminates their causes. **LIQUID ALIVE** cannot rest in the presence of organic waste materials; it must process them. Once their job is done they immediately concentrate on building their colony population up to full strength. As soon as new waste comes into their presence they swing into action. Anywhere in your plumbing system (elbows, bends, joints and traps) where solid waste can accumulate **LIQUID ALIVE** can build a colony and eliminate the cause of sluggish drains and odor. **LIQUID ALIVE** can be sprayed on flat surfaces to eliminate organic odor in carpets, from urine, vomit, waste, etc.—or poured into ponds and lakes to control organic odor—safely.



SOLD IN QUANTITIES OF 12 ONE QUART CONTAINERS ONLY.

Item #	Description	Pkg Qty	Price 1	Price 2
80-130	Liquid Alive - One Quart Container	12	12.44	10.95

Price 1	Price 2
Order Less Than \$500	Order \$500 or More

HODES CO
PROFESSIONAL PLUMBING PARTS

Phone: 1-800-777-6500
Fax: 1-800-982-5934
Web: www.HodesCo.com



**ZOOM SPOUT
OILER
RUST BUSTER**

PRICED EACH
SOLD 12 PER
DISPLAY ONLY



- For use on all motors, blowers, linkages, appliance pumps, high speed shaft bearings
- Flexible spout extends additional 7-1/2"

Item #	Description	Price 1	Price 2
80-191	Spout Oiler Display	3.30	2.90

**MULTI-PURPOSE
MAINTENANCE PRODUCT**



- Loosens bolts & nuts
- Actually "soaks into" metal and breaks the bond of rust-to-metal
- Keeps the connection lubricated

12 PER CASE

Item #	Description	Price 1	Price 2
80-106	12 oz. Aerosol Can	7.90	6.95

BLUE MONSTER



**DRAIN
BANGER**



- Professional Strength, One Pound bottle
- Sold only in a case of 24
- Devours hair, grease, soap and oils that slow and plug drain lines in less than 60 seconds
- Hot water activated, odorless

Item #	Description	Pkg Qty	Price 1	Price 2
80-823	1 lb. Containers	24	11.39	10.02

Oatey

(NO. 95)

**LEAD FREE
TINNING FLUX**



- Silver solder added
- Does not turn copper green
- Cleans, tins & fluxes in one step

Item #	Description	Price 1	Price 2
82-751	8 oz. Tinning Flux	10.35	9.11
82-752	16 oz. Tinning Flux	15.05	13.24

**PIPE JOINT
COMPOUND**



- Brush in top
- In ready mix paste form
- Never separates, never requires mixing
- Compound to lubricate threads

24 PER CASE

Item #	Description	Price 1	Price 2
82-101	8 oz. Jar	3.00	2.64

**STAINLESS
PUTTY**



- Made especially for the plumbing trade
- Do not use on Artificial marble

Item #	Description	Price 1	Price 2
82-151	14 oz..	1.66	1.46
82-150	5 lb.	9.49	8.35

Oatey

(H-20⁵)

**WATER
SOLUBLE FLUX**



- Water fluxable
- Thick as #5
- Meets ASTM D-13

Item #	Description	Price 1	Price 2
82-755	Water Soluble Flux	18.19	16.01

**PIPE JOINT
COMPOUND**



- In ready mixed paste form
- Never separates, never requires mixing
- Compound to lubricate threads

SOLD 12 PER BOX ONLY

Item #	Description	Price 1	Price 2
82-100	2 oz. Tube	1.72	1.51

**TEFLON
PIPE DOPE**



- Brush in top
- Heavy duty premium grade-white

24 PER CASE

Item #	Description	Price 1	Price 2
82-104	1/2 Pint (8 oz.)	12.49	10.99

STEM LUBE



- Easy grip screw-off lid
- Food grade approved
- USDA accepted AA
- Top quality heat proof stem lubricant specially designed for faucet stems, spouts, etc.
- Formulated in compliance with CFR, Title 21, part 121, section 121.2553 of the food and drug administration regulations

Item #	Description	Price 1	Price 2
25-123	1 oz.	2.56	2.25

**SOLDER
PASTE
SELF-CLEANING**



- Easy to use. Removes oxidation and prepares metal for proper bond of solder. Needs no preparation. Makes solder flow freely and tin perfectly. Screw top jar.

Item #	Description	Price 1	Price 2
82-144	8 oz.	7.90	6.95

COMPOUNDS

CHEMICALS
COMPOUNDS, TOOLS
UTILITY & HVAC



CUTTING OIL 1 GALLON CONTAINER PREMIUM



- To lubricate pipe cutting dies
- Dark color use on iron
- Stainless

4 PER CASE

Item #	Description	Price 1	Price 2
82-125	1 Gallon Cutting Oil	30.11	26.50



MEGALOC™ THREAD SEALANT



- Lead free
- No odor
- Non-separating and non-hazardous
- For use with all metals and plastics
- Never hardens, cracks or becomes brittle

Item #	Description	Price 1	Price 2
84-360	8 oz. (1/2 Pint)	11.65	10.25
84-361	16 oz. (1 Pint)	24.94	21.95

Oatey 100% LEAD #5 FREE SOLDER



- NSF listed
- 100% lead free
- Cleans and fluxes at the same time
- Blended to clean surface oxidation
- Effective on all metals except aluminum and stainless steel

Item #	Description	Price 1	Price 2
82-748	8 oz. #5 Paste Flux	5.67	4.99
82-749	1 lb. #5 Paste Flux	8.86	7.80

RECTORSEAL #5 PIPE DOPE LEAK PREVENTER



- Slow dry
- Soft set pipe dope
- For use on broad range of fluids and gases

Item #	Description	Price 1	Price 2
82-098	1/4 Pint (4 oz.)	8.28	7.29
82-105	1/2 Pint (8 oz.)	13.06	11.49
82-099	Pint (16 oz.)	20.40	17.95

NOKORODE SOLDER PASTE FOR COLD WEATHER



- Stays soft and sticky in cold weather
- Recommended for use on all solder alloys including 95/5 and all lead free solders

Item #	Description	Price 1	Price 2
82-844	8 oz.	9.94	8.75
82-846	16 oz.	12.22	10.75

NOKORODE SOLDER PASTE



- Lead free
- No odor
- Will not freeze or decompose

Item #	Description	Price 1	Price 2
82-745	1.7 oz.	2.22	1.95
82-744	8 oz.	8.81	7.75
82-746	16 oz.	12.05	10.60

BLOCK PIPE JOINT SEAL



- All purpose high performance pipe joint & gasket sealing compound
- Leak-proof resistant
- Grit free, non-separating
- Non-runny consistency

Item #	Description	Price 1	Price 2
84-358	1 Quart Block Pipe Joint Seal	59.03	51.95

WORTHINGTON 97/3 100% LEAD FREE WIRE SOLDER



- 1/8" ribbon
- Contains no lead
- Meets all Federal specifications
- Performance of 50/50 — outperforms 95/5
- Rosseal Solder Flux is an ideal companion
- 50 rolls per box

Item #	Description	Price 1	Price 2
70-140	1 lb. 100% Lead Free	26.08	22.95

WORTHINGTON PREMIUM 100% LEAD FREE WIRE SOLDER



- Stronger than 50/50 and 95/5
- More joints per pound than 50/50
- Lowest melting temperature, 410°F
- Easy flowing
- 50 rolls per box



Item #	Description	Price 1	Price 2
70-143	1 lb. 100% Lead Free	32.90	28.95

BLUE MONSTER



THREAD SEALANT

- Slow-drying, soft-setting
- Industrial grade thread sealant
- Non-hardening pipe thread compound
- Lead free, non-toxic, will not harden or separate in the can
- Brushable from -50F (-45C) to +400F (204C)
- 24 cans per box

Item #	Description	Price 1	Price 2
82-134	Thread Sealant - 1/2 Pint	14.32	12.60

BLUE MONSTER



PTFE PIPE THREAD SEALANT

- Slow drying, soft-setting
- Industrial grade thread sealant
- Non-hardening pipe thread compound
- Lead free, non-toxic, will not harden or separate in the can
- Brushable from -50F (-45C) to +400F (204C)
- 24 cans per box

Item #	Description	Price 1	Price 2
82-132	Thread Sealant w/PTFE - 1/2 Pint	15.63	13.75



www.HodesCo.com

• Easy Online Ordering

• Stock Checking

• Customized Historical Usage Reports

• Inventory Control Audio Training

• Free Custom Bin Label Ordering

Price 1	Price 2
Order Less Than \$500	Order \$500 or More



Phone: 1-800-777-6500
Fax: 1-800-982-5934
Web: www.HodesCo.com



CLEANER, PRIMER, CEMENT

YELLOW LABEL ALL PURPOSE CLEANER



- ABS, PVC, CPVC
- For all schedules and all diameters
- Flows freely and evaporates quickly
- Does not penetrate pipe surfaces
- Apply at 40°F to 100°F

Item #	Description	Price 1	Price 2
84-216	1/4 Pint (4 oz.)	3.82	3.36
84-208	1/2 Pint (8 oz.)	5.52	4.86
84-209	Pint (16 oz.)	7.58	6.67
84-210	Quart (32 oz.)	11.08	9.75

TAN LABEL CLEAR PRIMER



- For PVC & CPVC pipe and fittings
- All schedules, all diameters
- Removes surface dirt, grease & grime as well as softens the pipe surface for fast solvent weld
- Exceeds ASTM F-656
- NSF Listed

Item #	Description	Price 1	Price 2
84-248	Pint (16 oz.)	8.10	7.13
84-249	Quart (32 oz.)	13.72	12.07

PURPLE LABEL PURPLE PRIMER



- CPVC, PVC
- Removes dirt, grease and grime as well as softens pipe surface to allow for fast solvent weld
- Evaporates quickly
- Apply at 40°F to 100°F

Item #	Description	Price 1	Price 2
84-211	1/2 Pint (8 oz.)	6.11	5.38
84-212	Pint (16 oz.)	6.85	6.03
84-251	Quart (32 oz.)	12.94	11.39
84-254	Gallon (128 oz.)	47.10	41.45

GOLD LABEL REGULAR CLEAR PVC CEMENT



- Clear
- Recommended for PVC up to 4" & for Sch. 80 up to 2"
- Exceeds ASTM D-2564
- Apply at 40°F to 100°F
- NSF & UPC Listed

Item #	Description	Price 1	Price 2
84-217	1/4 Pint (4 oz.)	3.92	3.45
84-203	Pint (16 oz.)	7.59	6.68
84-204	Quart (32 oz.)	12.27	10.80

DARK GREEN LABEL ALL WEATHER CEMENT FOR PVC



- Medium bodied-fast set
- For PVC pipe & fittings up to 6" For Sch. 40 & Sch. 80 potable water pressure pipe, gas, conduit, drain waste & vent pipes
- Apply at 10°F to 100°F
- Exceeds ASTM D-2564
- NSF Listed

Item #	Description	Price 1	Price 2
84-218	Pint (16 oz.)	12.98	11.42
84-219	Quart (32 oz.)	15.19	13.37

LIGHT BLUE LABEL RAIN-R-SHINE™ CEMENT FOR PVC



- Blue
- For PVC pipe and fittings up to 6"
- For Sch. 40 & Sch. 80 potable water pressure pipe, irrigation, gas, conduit, drain waste & vent pipe
- Apply at 40°F to 100°F
- Exceeds ASTM D-2564
- NSF & UPC Listed

Item #	Description	Price 1	Price 2
84-232	1/2 Pint (8 oz.)	7.07	6.22
84-233	Pint (16 oz.)	12.31	10.83

GREEN LABEL HEAVY-DUTY PVC CEMENT



- Clear
- Exceeds ASTM D-2564
- Apply at 40°F to 100°F
- NSF & UPC Listed
- For PVC pipe & fittings up to 12" in diameter
- For Sch. 40 & Sch. 80 potable water pressure pipe, gas, conduit, drain waste & vent pipes

Item #	Description	Price 1	Price 2
84-258	1/4 Pint (4 oz.)	4.84	4.26
84-259	1/2 Pint (8 oz.)	7.69	6.77
84-213	Pint (16 oz.)	10.42	9.17
84-214	Quart (32 oz.)	22.47	19.77

LIGHT GREEN LABEL ABS TO PVC TRANSITION CEMENT



- Medium-bodied green cement for use in joining ABS to PVC in non-pressure transition joints
- All schedules up to 6" diameter pipe and fittings
- Apply at 40°F to 100°F

Item #	Description	Price 1	Price 2
84-265	Pint (16 oz.)	13.45	11.84

RED LABEL ALL PURPOSE CEMENT



- Milky clear
- For ABS, PVC and CPVC
- Apply at 40°F to 100°F
- Exceeds ASTM D-2564, D-2846, D-2235, F-493 standards
- 1/4 Pint (4 oz.) & 1/2 Pint (8 oz.) up to 6" pipe
- Pint (16 oz.) & Quart (32 oz.) up to 12" pipe

Item #	Description	Price 1	Price 2
84-215	1/4 Pint (4 oz.)	4.75	4.18
84-200	1/2 Pint (8 oz.)	7.81	6.87
84-201	Pint (16 oz.)	15.94	14.03
84-245	Quart (32 oz.)	22.76	20.03

YELLOW LABEL CPVC CEMENT



- NSF listed
- One step — no primer required
- Faster cure time
- Reduced installation time
- Exceeds environmental requirements


Item #	Description	Price 1	Price 2
84-260	1/4 Pint (4 oz.)	6.22	5.47
84-261	1/2 Pint (8 oz.)	9.98	8.78

BLUE LABEL ABS CEMENT



- Black
- For ABS pipe and fittings up to 6"
- For all non-pressure applications
- Exceeds ASTM D-2235
- Apply at 40°F to 90°F
- NSF & UPC Listed
- All types and grades of ABS pipe and fittings for DWV

Item #	Description	Price 1	Price 2
84-205	1/2 Pint (8 oz.)	6.30	5.54
84-206	Pint (16 oz.)	10.20	8.98

 I am a big sports fan and listen to a lot of sports radio. A question that always comes up is "If you were to start a baseball team who would be your 1st pick? I don't know the answer to that, but I do know that if I was to start a plumbing company today my supplier would be the Hodes Company. Great company but better people.

Bob Macca
Macca Plumbing

CLEANER AND CEMENT

COMPOUNDS



**CHEMICALS
COMPOUNDS, TOOLS
UTILITY & HVAC**

HONOR THY PLUMBER™ PROFESSIONAL GRADE PRODUCTS

GRAPHITE PACKING

25-125



25-120



- For use on valve stems, steam, air, oil etc.
- Made of carefully selected long strand asbestos fibre thoroughly saturated with oil and graphite

Item #	Description	Price 1	Price 2
25-120	21" Graphite Packing	1.13	.99¢
25-125	8' - 1/4" x 1/4 Lb. Spool	10.01	8.81

FINE CANDLE WICKING



Item #	Description	Price 1	Price 2
25-101	Candle Wicking	5.25	4.62

DISPOSABLE CHIP BRUSH



- Great for one time jobs

SOLD IN BOX QTY ONLY

Item #	Description	Pkg Qty	Price 1	Price 2
90-030	1" Chip Brush	12	.83¢	.73¢
90-028	2" Chip Brush	12	.83¢	.73¢

METAL HANDLE ACID & DOPE BRUSH 3/8" BRUSH



- Priced per each

SOLD IN BOX QTY ONLY

Item #	Description	Pkg Qty	Price 1	Price 2
80-290	3/8" Brush	12	.22¢	.19¢
80-291	3/8" Brush	144	.15¢	.13¢

WOOD HANDLE LARGE ACID & DOPE BRUSH 3/4" BRUSH



- Priced per each

SOLD 12 PER PACKAGE ONLY

Item #	Description	Price 1	Price 2
80-292	Acid & Dope Brush	.99¢	.87¢

SCRUBS IN-A-BUCKET™ HAND CLEANING TOWELS



- Provides fast, easy and effective hand cleaning with portability
- Cleans the toughest soils, greases, tar, graphite, glue etc.
- No rinsing, no drying, no residue

Item #	Description	Price 1	Price 2
80-610	30 Scrubs In-A-Bucket	16.14	14.20
80-145	72 Scrubs In-A-Bucket	24.56	21.61

POLYSEAMSEAL®

TUB & TILE ADHESIVE CAULK
GUARANTEED MILDEW PROOF



For sealing around tubs, showers, sinks and all bathroom fixtures. Resets tile, fills cracks and joints. Seals around windows and doors and in places where a smooth, watertight, mildewproof seal is required. Stays flexible. Free of cracks and mildew. Cleans up with soap and water.



5.5 OZ. TUBE
SHOWN



Ideal for use on: hardwood, soft wood, masonry, aluminum, ceramic tile, plastic foam, fiberglass, cork, cork tile, glass, metal cement, plastic laminate. Keep out of reach of children. Not for internal consumption. Product may be toxic to tropical fish.

Item #	Description	Price 1	Price 2
Squeeze Tubes			
80-510	5.5 oz. White Tube	4.01	3.53
80-511	5.5 oz. Almond Tube	4.00	3.52
80-512	5.5 oz. Translucent Tube	5.17	4.55
Cartridge			
80-515	10 oz. White Cartridge	6.91	6.08

COTTON SWABS FOR CLOSET BOWLS



- For urinals and toilet bowls
- Plastic handle

SOLD 5 PER PACKAGE ONLY

Item #	Description	Price 1	Price 2
80-295	Closet Bowl Swabs	1.51	1.33

Oatey CLEAR SILICONE SEALANT

(30636)



- Clear silicone sealant
- 100% flexible silicone
- Bonds to ceramic, marble, glass, fiberglass, painted surfaces & most metals

12 PER CARTON

Item #	Description	Price 1	Price 2
80-525	Clear 10.1 oz.	8.66	7.62

DAUBER



Item #	Description	Price 1	Price 2
80-294	1-1/2" up to 3" Pipe Diameter	.55¢	.48¢

Price 1	Price 2
Order Less Than \$500	Order \$500 or More



Phone: 1-800-777-6500
Fax: 1-800-982-5934
Web: www.HodesCo.com



**For
SLOAN
FLUSHOMETER
SPUD WRENCH**



- Fits Sloan Flushometers
- For removing the Flushometer tailpiece without damaging the finish or ground joint

Item #	Description	Price 1	Price 2
65-522	Flushometer Spud Wrench	23.89	21.02

**SOCKET
WRENCH SET**



- Seamless steel
- Eliminates cutting large hole in wall
- Set of five double end socket wrenches with ten different sizes
- Expertly designed to fit bath and shower valves in the wall

Item #	Description	Price 1	Price 2
90-317	Complete Socket Set - Heavy Duty	38.53	33.91
90-316	Complete Socket Set	9.17	8.07

**STREET KEY
SOCKETS**



- Make your own street keys
- 5/8" slot
- 1-3/4" long
- 1/2" IPS tap

Item #	Description	Price 1	Price 2
90-331	Street Key Socket	11.97	10.53

**NO-HUB
TORQUE
WRENCH**



For assembling no-hub soil pipe couplings. Preset 60 inch pound torque. 5/16" hex socket grips securely "clicks" when proper torque has been developed and eliminates guesswork to obtain a leak-proof joint. Handy reversing lever.

Item #	Description	Price 1	Price 2
90-307	No-Hub Wrench	8.85	7.79

**CLEANOUT PLUG
WRENCH**



- For cleanout plugs with counter sunk top

Item #	Description	Price 1	Price 2
90-318	3/4" - 1" - 1 1/8" - 1 3/8"	10.49	9.23

**BASIN & BATH
PLUG TOOL**



Item #	Description	Price 1	Price 2
90-319	Basin and Bath Plug Tool	3.00	2.64

**SOCKET STYLE
SEAT NUT
WRENCH**



- Fits every kind of nut metal or plastic

Item #	Description	Price 1	Price 2
90-626	Seat Nut Wrench	24.33	21.41

SLOAN

(A-50)



- Original Sloan tool
- Fits every connection required

Item #	Description	Price 1	Price 2
65-520	Genuine Sloan Wrench	48.38	42.57

**SCREW-IN ELEMENT
WRENCH**



Item #	Description	Price 1	Price 2
44-345	Element Wrench	4.98	4.38

QUICK NUTCRACKER



FOR USE ON:

- 1/2" Shank Single Basin Faucet
- 1/2" Shank Centersets
- 1/2" Shank Kitchen Faucets

The "Quick Nutcracker" is the best tool available to the repair plumber, maintenance and handyman for removing frozen and corroded 1/2" zinc locknuts from deck mounted kitchen and bathroom faucets.

The "Quick Nutcracker" saves time and money. All the user needs is a 3/8" ratchet, ratchet extension and the "Quick Nutcracker" to make one of the most frustrating repair plumbing jobs quick and simple.

Item #	Description	Price 1	Price 2
90-305	Nutcracker Tool	46.28	40.73

TOOLS



**CHEMICALS
COMPOUNDS, TOOLS
UTILITY & HVAC**

CLASSIC DRAIN WRENCH

TIGHTENS MOST FIBERGLASS
SHOWER STALL DRAIN
LOCKNUTS AND DIE CAST
BASKET STRAINER LOCKNUTS.



- 13" overall length
- Cushion grip
- Solid steel construction
- Fits 3-1/2" plastic locknuts
- Fits 3-3/8" die cast basket strainer locknuts
- Fits brass locknuts on Casper's®, brass shower stall drains
- Offset handle for close quarter work

Item #	Description	Price 1	Price 2
90-428	Drain Wrench	20.24	17.81

THE SINK DRAIN WRENCH™



- Fits kitchen, bath and laundry tub basket strainers, "P" traps, wing nuts and tub drains
- Lifetime Guarantee

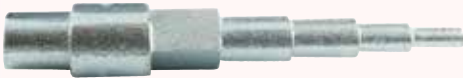
Item #	Description	Price 1	Price 2
90-851	The Sink Drain Wrench™	13.88	12.21

BASKET STRAINER INSTALLATION WRENCH



Item #	Description	Price 1	Price 2
90-448	Wrench	4.81	4.23

RADIATOR SPUD WRENCH



Item #	Description	Price 1	Price 2
90-321	Radiator Spud Wrench	11.20	9.86

FOUR WAY VALVE STEM KEY



For stopcocks, sillcocks and valves, used when handles have been removed. Fits 1/4", 9/32", 5/16" and 11/32" square stems. High quality steel, case hardened and zinc plated.

Item #	Description	Price 1	Price 2
90-334	4 Way Key	3.64	3.20

DRAIN KEY



Item #	Description	Price 1	Price 2
90-313	Drain Key	33.34	29.34

SEAT GAUGE BOARD



- 4" x 6" size
- Aluminum
- 20 different seat gauges
- 4 different screw gauges

Item #	Description	Price 1	Price 2
90-402	Seat Gauge	39.24	34.53

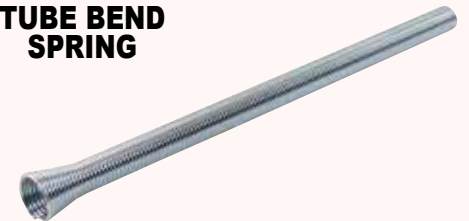
PLUMBERS PAL BASKET STRAINER WRENCH



- Fits all major manufacturers, plastic & brass
- Fits hex nuts and all 4, 6 and 8 tab locking nuts on strainer drains

Item #	Description	Price 1	Price 2
90-473	Basket Strainer Wrench	33.18	29.20

TUBE BEND SPRING



- For 3/8" Tubing for copper, aluminum and soft thin wall tubing

Item #	Description	Price 1	Price 2
90-510	3/8" x 10 Ext Tube Bend	2.99	2.63

FOUR PIECE FAUCET SEAT TOOL SET



Item #	Description	Price 1	Price 2
90-403	4 Pc. Faucet Seat Tool	15.66	13.78

FAUCET SEAT REMOVAL TOOL

TAPERED



TAPERED TO FIT SQUARE, HEX, OR OCTAGON

Item #	Description	Price 1	Price 2
90-404	Faucet Seat Tool	3.08	2.71

FAUCET SEAT REMOVAL TOOL

90-411 SHOWN

Our 90-412 Is made from case hardened steel with a black oxide finish and left hand threads for easy and quick removal of even stripped out faucet seats

Item #	Description	Price 1	Price 2
90-411	7" Fit-All Tapered Tool	2.35	2.07
90-412	Heavy Grade Hardened Steel	9.88	8.69

FAUCET SEAT REMOVAL TOOL

SIX STEP



STEPPED TO FIT SQUARE & HEX—SIX STEP

Item #	Description	Price 1	Price 2
90-405	Faucet Seat Tool	3.08	2.71

Price 1	Price 2
Order Less Than \$500	Order \$500 or More

HODES CO
PROFESSIONAL PLUMBING PARTS

Phone: 1-800-777-6500
Fax: 1-800-982-5934
Web: www.HodesCo.com



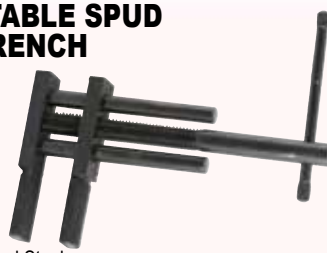
SPUD HOLDING WRENCH



- Fits all closet Spuds
- "U" shape handle fits lavatory, waste and overflow strainers

Item #	Description	Price 1	Price 2
90-323	Spud Holding Wrench	16.00	14.08

ADJUSTABLE SPUD WRENCH



- Case Hardened Steel

Item #	Description	Price 1	Price 2
90-370	Adjustable Spud Wrench	56.58	49.79

FAUCET SEAT DRESSER



- For all type of bibbs or built-in fixtures
- Produces a raised, rounded seat furnished with standard cutters
- Locking device gives positive control

Item #	Description	Price 1	Price 2
90-612	Faucet Seat Dresser	12.72	11.19

**MOEN®
COMBINATION
CARTRIDGE PULLER**



(104421)

- FOR 1200, 1225 AND 1222 CARTRIDGES
- Redesigned to remove posi-temp and all Moen handle cartridges

Item #	Description	Price 1	Price 2
90-630	Genuine Cartridge Puller	47.53	41.83
90-631	Generic Cartridge Puller	15.13	13.31

CARTRIDGE PULLER



- For the removal of both metal and plastic Moen faucet cartridges

Item #	Description	Price 1	Price 2
90-632	Cartridge Puller for Moen	9.56	8.41

**ONA
CARTRIDGE PULLER**



- For extracting Moen valve cartridges

Item #	Description	Price 1	Price 2
90-634	Ona Cartridge Puller	43.47	38.25

**FAUCET
HANDLE PULLER**



Item #	Description	Price 1	Price 2
90-602	Faucet Handle Puller	4.28	3.77

**WATER SHUT OFF™
WRENCH**



- Specifically designed for water supply shut-off valves
- The easiest and safest way to turn off water at hard-to-reach toilet and sink supply valves
- Strong Triple Column™ construction

Item #	Description	Price 1	Price 2
90-852	The Shut Off™ Wrench	12.42	10.93

**TIGHT SPOT™
WRENCH**



- Lifetime Guarantee
- Permits trap and drain line installation / removal with sink in place
- Install or repair pedestal sink drains without removing sink
- Fits all 6, 8 and 12 sided die cast drain nuts

Item #	Description	Price 1	Price 2
90-853	1 1/4" Tight Spot™ Wrench	13.05	11.48
90-854	1 1/2" Tight Spot™ Wrench	14.55	12.80

**HANDLE
PULLER/HAMMER**



Item #	Description	Price 1	Price 2
90-606	Handle Puller/Hammer	8.78	7.73

**PLUMBERS
EXTRACTOR KIT**



- 6 piece set - 1/8", 1/4", 3/8", 1/2", 5/8", 3/4"
- Fits 1/8" - 3/4" pipe
- Lifetime Guarantee

Item #	Description	Price 1	Price 2
90-856	Plumbers Extractor Kit	10.03	8.83

**BASIN BUDDY
UNIVERSAL
BASIN NUT
WRENCH**



- Use with a 3/8" drive ratchet
- Good for:
- Basin metal locknuts
- Basin PVC locknuts
- Basin coupling nuts
- Toilet tank metal nuts

Item #	Description	Price 1	Price 2
90-628	Universal Basin Nut Wrench	42.86	37.72

**SPUD AND NIPPLE
EXTRACTOR**



1" TO 2"

- For nipples or closet spuds

Item #	Description	Price 1	Price 2
90-322	Spud and Nipple Extractor	42.51	37.41

**11" BASIN
WRENCH**



- Jaws fit 1/2" to 1-1/4" hex and square nuts
- Use for faucet nuts in tight spaces
- Spring jaw with spring action grip
- Lifetime guarantee

Item #	Description	Price 1	Price 2
90-857	11" Basin Wrench	7.72	6.79

**TELESCOPING
BASIN WRENCH**



- Jaws fit 1/2" to 1-1/4" hex and square nuts
- Telescoping shank quickly adjusts for lengths from 10" to 17"
- Lifetime guarantee

Item #	Description	Price 1	Price 2
90-858	Telescoping Basin Wrench	16.82	14.80

TOOLS

TOOLS

CHEMICALS COMPOUNDS, TOOLS UTILITY & HVAC

Gizmode
INNOVATIONS

OVERFLOW WARNING SENSOR

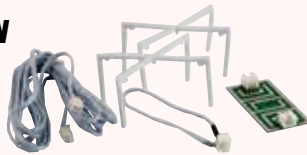


- This attachment acts as a sump pump overflow warning
- For use with the Original Water Alarm (90-952)
- Use for sinks, Wells, Aquariums, Sumps, Bathtubs, Hot tubs or any container that could overflow and cause flooding

Item #	Description	Price 1	Price 2
90-956	Sump Pump Attachment	9.78	8.61

Gizmode
INNOVATIONS

SENSOR PAD OVERFLOW WARNING



- This attachment acts as an A/C condensation pan overflow alert when used with 90-952 water alarm
- Can be used with or without the stand for ultra low profile areas (i.e. under the refrigerator)
- Daisy-chain multiple sensors

Item #	Description	Price 1	Price 2
90-957	Sensor Pad Attachment	14.68	12.92

Gizmode
INNOVATIONS

WATER ALARM



Great for Add-On Sales or Marketing Item

The Water Alarm™ has been developed to detect even the smallest amounts of water before damage can occur. Placing water alarms in critical spots throughout the home can go a long way to ensure your customers' home will be protected from the expense and destruction of water damage.

- 1 per box - 80 per case
- Simple installation - Set anywhere problem moisture could occur
- Safe to use around children and pets
- Very affordable, outfit a home for less than the insurance deductible
- One year warranty
- Extra-loud alarm sounds at 110+ db for up to 72 hours
- Outer shell constructed of durable ABS plastic
- Operates on a standard 9-volt battery (not included)
- Low battery warning - chirps when battery is low
- Long battery life - new batteries required once a year
- Sensors detect even small amounts of moisture before damage can occur; no standing water required
- Sensors are stainless steel - will not corrode or stain
- Completely electronic - no moving parts to fail or wear out

Use our Full Color Service Call Back Adhesive Label # 95-515 (Size 1" x 2-5/8" - See other side) to personalize these with your company name and phone number. Buy a case of 80 alarms and we will provide you with the labels for them for free!

Great Service Label Item!
See page 326.



- A leaky or overflowing toilet can cause major floor, wall and cabinetry damage.



- Eliminate water heater bursts by detecting moisture at the first sign of leakage



- Washing machine leaks are some of the most common and most destructive. The Water Alarm™ is essential even with an overflow tray



- Keep a Water Alarm™ near your water line's main valve
- Use the Water Alarm™ anywhere problems might occur



- Even a few drops from pipes under leaky sinks or disposal units can rot whole sections of expensive cabinetry



- Dishwasher leaks are far too common and often go unnoticed until they ruin floors and cabinetry.

Item #	Description	Price 1	Price 2
90-952	Water Alarm	19.57	17.22
91-394	9 Volt Alkaline Battery	4.33	3.81

JAM BAR TOILET BOLT LOCK WRENCH



- Toilet bolt removal tool
- Stops bolt rotation
- Grips 1/4" and 5/16" bolts
- Quality made steel

Item #	Description	Price 1	Price 2
90-429	Jam Bar	8.07	7.10

HONOR THY PLUMBER™

PLUMBERS THIRD HAND

- Holds the garbage disposer and sink strainer securely in place from above during the installation process.
- Leaves two hands free for the installation
- Significantly reduces the amount of time to install a garbage disposer



Item #	Description	Price 1	Price 2
91-802	Plumber's Third Hand	57.77	50.84

Sioux Chief  **PLUMBERS
HAND SAW**

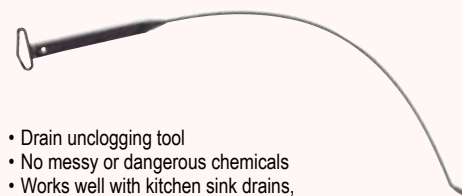
(300-12)



- 12" blade length
- 13 teeth / 14 points per inch
- Custom molded handle
- Hardened teeth give up to 5 times longer life
- Cuts plastic and plywood

Item #	Description	Price 1	Price 2
90-186	12" Blade Length Hand Saw	14.59	12.84

DRAIN STICK™



- Drain unclogging tool
- No messy or dangerous chemicals
- Works well with kitchen sink drains, showers and bath drains
- Long enough to reach most clogs safely and easily

Item #	Description	Price 1	Price 2
90-855	Drain Stick™	7.80	6.86

POWER PUMP WATER SUCTION DEVICE

- Gives the ability to drain toilet tank prior to maintenance
- Flat suction end enables for a complete draining
- For use in tubs, toilets, sinks and showers
- Bottom disc is removable for a larger suction capacity



Item #	Description	Price 1	Price 2
91-800	Power Pump	31.55	27.76

Price 1	Price 2
Order Less Than \$500	Order \$500 or More

HODES CO
PROFESSIONAL PLUMBING PARTS

Phone: 1-800-777-6500
Fax: 1-800-982-5934
Web: www.HodesCo.com



**General
PIPE CLEANERS
AUTOCUT™**



(ATC-12)
(ATC-34)
(ATC-100)
(ATC-W)

- Quicker than conventional cutters
- Cut copper tubing with less than one inch of clearance
- Easily handle close stub out work
- Spring loaded to provide constant cutting pressure
- Long lasting hardened steel cutting wheels
- Cutter wheel automatically tightens as you turn the AutoCut
- No knobs to turn
- Available in 1/2" and 3/4" sizes
- Ratchet handles available for extra turning leverage

Item #	Description	Price 1	Price 2
90-450	1/2" Automatic Tubing Cutter	27.65	24.33
90-451	3/4" Automatic Tubing Cutter	30.20	26.58
90-453	1" Automatic Tubing Cutter	39.50	34.76
90-452	Wheel For Above (Sold 2 per only)	6.00	5.28

**General
PIPE CLEANERS
SUPERSLICE
TUBE CUTTER**



- Patented V-point blade pierces hard or soft plastic tubing, then slices through to give a clean, easy cut with virtually no tube deformation
- Use on PVC, CPVC, irrigation pipe, plastic or rubber garden hose and plastic electric conduit
- Easily cuts tubing as large as one inch in diameter

Item #	Description	Price 1	Price 2
91-119	Super Slice Tubing Cutter	32.09	28.24

**RIDGID
TUBE CUTTER**



(MODEL 103)
(MODEL 101)
(MODEL 118)

- 1/8" to 5/8" capacity
- For hard and soft copper, aluminum and brass
- Large knurled feed screw knob gives control
- Spare wheel included on 90-575 & 90-576

Item #	Description	Price 1	Price 2
90-573	5/8" (1/8" to 5/8" capacity)	29.90	26.31
90-575	1-1/8" (1/4" to 1-1/8" capacity)	54.43	47.90
90-576	Self Feeding Tube Cutter	61.86	54.44

**PVC
CUTTER TOOL**



- For 1" PVC, CPVC, Schedule 40 & 90
- For cutting pipes made of synthetic resins
- Easy-handling with heat treated blade
- Anti-rust, anti-wear
- Quick ratchet cutting action

Item #	Description	Price 1	Price 2
90-165	Pipe Cutter	22.57	19.86

**Sioux Chief
PLASTIC
TUBE CUTTER**



(304-08)
(304-1)



- Quick precision cutting on polybutylene, polyethylene, and non-metallic hose

Item #	Description	Price 1	Price 2
90-257	Tube Cutter	15.15	13.33
90-258	Replacement Blade Only	4.99	4.39

**SURE CUT
REPLACEMENT
BLADE**



- Replacement blade for Sure Cut ratcheting tubing cutters 90-260 & 90-267

Item #	Description	Price 1	Price 2
90-060	Sure Cut Replacement Blade	7.13	6.27

**SURE CUT
MINI RATCHETING
TUBING CUTTER**



- Self feeding action for automatic cutting
- Strong, lightweight nylon & fiberglass handle
- Spare cutting wheel is supplied in the handle
- Cuts copper, brass, alum tubing & thin wall conduit
- Ratchet motion
- Capacity: 1/4" - 7/8"

Item #	Description	Price 1	Price 2
90-267	Sure Cut Mini Tubing Cutter	36.70	32.30



**Over 20 NEW Pre-Labeled Ready
For Service Truck Stock Boxes
AVAILABLE NOW.**

SEE PAGE 283
www.HODESCO.com

**RAM
BIT™
PLASTIC FITTING
SAVER
PATENT#4,720,219**



- Makes in-line repairs and installations
- Reams plastic pipe square and accurately below the surface or finished grade
- Saves both plastic fittings and solvent welded ball valves
- Use to repair freeze damaged plastic pipe
- Leaves fittings clean and ready for solvent welding
- Works On: ABS DWV, PVC DWV, PVC PRESSURE, RIGID PVC
- Electric conduit:
- Use with 3/8" or heavy duty 3/8" rechargeable drill size

Item #	Size	Class 125	Class 200	Sch 40	Sch 80	Price 1	Price 2
90-420	1/2"	X		X	X	20.56	18.09
91-601	3/4"					24.63	21.67
90-422	1"		X	X	X	24.93	21.94
90-423	1-1/4"		X	X	X	33.99	29.91
90-424	1-1/2"		X	X	X	34.30	30.18
90-425	2"		X	X	X	34.59	30.44
91-606	3"		X	X	X	48.61	42.78
91-607	4"		X	X	X	53.52	47.10

**SWEDGING
TOOL**



- Eliminates need for couplings, swedges, 3/8", 1/2" AND 3/4" type K, L OR M
- Copper tempered steel

Item #	Description	Price 1	Price 2
90-563	Cadmium Finish	24.08	21.19

**RADIAL CUTTER
FOR PEX/CPVC/COLD EXPANSION**



- For 1/2", 3/4" and 1" pipe

Item #	Description	Price 1	Price 2
90-167	Radial Cutter	17.64	15.52

**Sioux Chief
INSIDE
PIPE CUTTER**

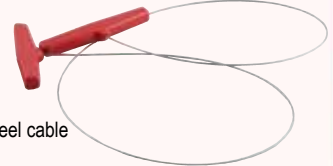


(390-50153)

- Fits all electric drills.
- Cuts inside any size pipe from 2" up.
- Self sharpening.
- Cuts through pipe into concrete without damage to blade

Item #	Description	Price 1	Price 2
90-375	2" Cutter w/Replacement Blades	8.17	7.19

**PVC CABLE
SAW** FOR FAST CUTTING OF PVC,
DWV AND IRRIGATION PIPE



- 24" Stainless steel cable
- Easily stored
- 30" overall length
- Great for tight spots; needs only 1/4" clearance

Item #	Description	Price 1	Price 2
90-433	PVC Cable Saw	7.58	6.67

SAW BLADES



**CHEMICALS
COMPOUNDS, TOOLS
UTILITY & HVAC**

HACKMASTER R® REPLACEMENT SAW BLADES



5 IN A PACK - 50 IN A BOX

Item #	Ref No.	Size	Use	Price 1	Price 2
92-167	(456R)	4" x 6T	Wood/Plaster	3.74	3.29
92-164	(966R)	9" x 6T	Wood Demo	7.34	6.46
92-161	(106R)	12" x 6T	Wood Demo	8.48	7.46

HACKMASTER R® REPLACEMENT SAW BLADES



5 IN A PACK - 50 IN A BOX

Item #	Ref No.	Size	Use	Price 1	Price 2
92-108	(610R)	6" x 10T	Wood/Metal/Plastic	4.40	3.87
92-114	(810R)	8" x 10T	Wood/Metal/Plastic	5.03	4.43

HACKMASTER R® REPLACEMENT SAW BLADES



5 IN A PACK - 50 IN A BOX

Item #	Ref No.	Size	Use	Price 1	Price 2
92-113	(656R)	6" x 6T	Nail Embedded Wood	4.68	4.12
92-115	(956R)	9" x 6T	Nail Embedded Wood	6.30	5.54
92-116	(156R)	12" x 6T	Nail Embedded Wood	7.57	6.66

HACKMASTER R® REPLACEMENT SAW BLADES



5 IN A PACK - 50 IN A BOX

Item #	Ref No.	Size	Use	Price 1	Price 2
92-104	(424R)	4" x 24T	For Thin Metal	3.40	2.99
92-111	(624R)	6" x 24T	For Thin Metal	3.94	3.47

HACKMASTER R® REPLACEMENT SAW BLADES



5 IN A PACK - 50 IN A BOX

Item #	Ref No.	Size	Use	Price 1	Price 2
92-110	(618R)	6" x 18T	For Medium Metal	3.94	3.47
92-119	(818R)	8" x 18T	For Medium Metal	5.03	4.43
92-160	(118R)	12" x 18T	Metal	7.58	6.67

HACKMASTER R® REPLACEMENT SAW BLADES



5 IN A PACK - 50 IN A BOX

Item #	Ref No.	Size	Use	Price 1	Price 2
92-166	(960R)	9" x 10T	Metal Demo	7.34	6.46
92-109	(614R)	6" x 14T	For Thick Metal	3.94	3.47
92-163	(9514R)	9" x 14T	Metal Demo - Heavy Duty	6.69	5.89

HACKMASTER R® REPLACEMENT SAW BLADES



5 IN A PACK - 50 IN A BOX

NEW

Item #	Ref No.	Size	Use	Price 1	Price 2
92-170	(650R)	6" x 10/14T	Metal - General Purpose - Heavy Duty	5.47	4.81
92-118	(110R)	12" x 10/14T	General Purpose	8.49	7.47

HACKMASTER R® REPLACEMENT SAW BLADES



5 IN A PACK - 50 IN A BOX

NEW

Item #	Ref No.	Size	Use	Price 1	Price 2
92-169	(800R)	8" x GRIT	Carbide Grit - Multi-Use	12.34	10.86

TINY TIM HACKSAW CUTS WOOD, PLASTER, STEEL, BRASS, ETC.



• Vinyl grip handle

Item #	Description	Price 1	Price 2
90-142	Hacksaw with 1/4" x 6" x 32" Tooth Blade	4.66	4.10
90-143	6" Blade With Removal Pin	1.05	.92¢

CLOSE QUARTER SAW



Item #	Description	Price 1	Price 2
90-154	Close Quarter Saw	21.03	18.51
90-161	Close Quarter Replacement Blade	1.85	1.63

HACKSAW BLADES



Item #	Description	Price 1	Price 2
92-123	Lenox 12" - 24T Blade	2.74	2.41
93-111	Generic 12" - 18T Blade	2.02	1.78
92-120	12" x 18T - (1218R)	2.39	2.10

Price 1	Price 2
Order Less Than \$500	Order \$500 or More

HODES CO
PREFERRED PLUMBING PARTS

Phone: 1-800-777-6500
Fax: 1-800-982-5934
Web: www.HodesCo.com



**MEGAPRO[®]
LED LIGHT
AND CLIP**



Item #	Description	Price 1	Price 2
90-285	Led Light and Clip only	5.49	4.83

**ALL-IN-ONE
SCREWDRIVER**



- 2 "Phillips" shanks
- 2 "Slot" shanks insulate handle
- 1/4" & 5/16" Nut Driver

Item #	Description	Price 1	Price 2
90-300	All-In-One Screwdriver	6.57	5.78

**WATER PUMP
PLIERS**



- Fast and positive adjustment
- Plastic coated handles
- Extra strong teeth

Item #	Description	Price 1	Price 2
90-337	10" Pliers	18.16	15.98

**OETIKER[®]
RATCHETING
CRIMP TOOL**



- For 3/8" - 1" sizes

Item #	Description	Price 1	Price 2
90-181	3 Handle Ratchet 3/8" - 1"	368.60	324.37

FYR-STYK



- Makes it easier to light water heaters and furnaces
- Extends to over 2 feet

Item #	Description	Price 1	Price 2
90-440	Fyr-Styk	3.88	3.41

MEGAPRO[®] ORIGINAL 15 IN 1



- 7 double end professional quality bits
- 14 of the most popular sizes
- Shaft opening serves as a 1/4" hex driver

Item #	Description	Price 1	Price 2
90-290	Original 15 in 1 MegaPro™	26.77	23.56

**OETIKER[®]
CRIMP
TOOL**



- For 1/2" - 3/4" sizes

Item #	Description	Price 1	Price 2
90-191	1/2" - 3/4" Comp Crimp Tool	232.60	204.69

GRAB ALL



Item #	Description	Price 1	Price 2
90-445	Grab All 24" Retrieving Tool	4.24	3.73

**JAWS[™]
POWER GRIP**



- Non-slip grip, adjustable through 1-1/2"
- Fits hex, square or round
- 10" self-adjusting ratcheting wrench
- Ratcheting head quickly sets to any position automatically without clumsy turn-screw adjustments
- Works at every angle thru 360°
- For pipes, nuts, bolts, fittings of all kinds, American or metric
- The harder you press - the tighter it gets
- The wrench will loosen rusted and frozen bolts

Item #	Description	Price 1	Price 2
93-950	Jaws™ Power Grip	31.06	27.33

**DECRIMPING
TOOL**



- Removes crimp ring and pex tubing from 1/2", 3/4" & 1" fittings
- Prevents damage to brass fittings

Item #	Description	Price 1	Price 2
90-174	Decrimping Tool	100.05	88.04

TOOLS

TOOLS



**CHEMICALS
COMPOUNDS, TOOLS
UTILITY & HVAC**

Sioux Chief
**GRIP TIP
KNOCKOUT
TEST PLUG**



(881-10)
(881-12)
(881-13)
(881-14)

- 2 tips that allow DWV system to be air or water tested
- Perfect debris cover that knocks out in one piece
- Easy to hold stem and a deeper glue surface provides easier installation than standard plugs!

Item #	Description	Price 1	Price 2
70-416	1-1/2"	.31¢	.27¢
70-417	2"	.34¢	.30¢
70-418	3"	.47¢	.41¢
70-419	4"	.61¢	.54¢

**EXPANDING
DRAIN OPENER**



Connect it to your hose, the rest is automatic safe, clean... simply inserts into drain opening expands automatically when faucet turns on to form seal surge valve sends powerful water pulses through pipe to loosen and clear blockage. Automatically equipped with back flow protection.

Item #	Description	Price 1	Price 2
90-109	Household 1" - 2" lines	17.02	14.98
90-110	Household 1-1/2" - 3" lines	17.88	15.73
90-112	Commercial 3" - 6" lines	42.75	37.62

FLOOD GUARDS



To prevent basement flooding flood-guard operates like a check valve to seal off water back-up caused by overloaded sewers. Water flows normally through the drain until the sewer begins to back-up. Then the flood-guard float rises to seal off the drain opening until the water recedes.

Item #	Description	Price 1	Price 2
90-714	2" Float Model	21.11	18.58
90-710	3" Float Model	15.22	13.39
90-711	4" Float Model	18.09	15.92

Sioux Chief
**SINGLE STAGE
INFLATABLE
TEST PLUG**



(882-ES12)
(882-ES23)
(882-ES34)
(882-ES46)

Item #	Description	Price 1	Price 2
90-115	1-1/4" - 2", 5-1/2" Long	38.67	34.03
90-116	2" - 3", 5" Long	40.83	35.93
90-117	3" - 4", 7-1/4" Long	40.83	35.93
90-118	4" - 6", 10-1/4" Long	92.38	81.29

FLOOD GUARDS



• Standpipe model for floor drains

Item #	Description	Price 1	Price 2
90-712	3" Flood Guard	14.81	13.03
90-713	4" Flood Guard	17.42	15.33

**URINAL PLUG
EXPANSION TYPE**



• For plugging water lines and stub-outs

Item #	Description	Price 1	Price 2
90-525	1/2" Round x 3/4" High	4.36	3.84
90-526	3/4" Round x 1 1/8" High	4.67	4.11
90-868	1" Round	5.33	4.69
90-869	1-1/4"	6.66	5.86

"Get Swet"
**REPLACEMENT
RUBBERS**



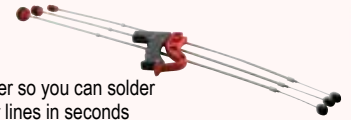
Item #	Description	Price 1	Price 2
90-911	1/2" Replacement Rubber	6.23	5.48
90-912	3/4" Replacement Rubber	7.65	6.73
90-913	1" Replacement Rubber	8.63	7.59

"Get Swet"



Item #	Description	Price 1	Price 2
90-907	Combo (1/2", 3/4", & 1")	71.68	63.08

**WATER STOPPER
HANDLE & CABLE SET**



- Stops the water so you can solder
- Solder copper lines in seconds
- Elbows and valves are no problem
- Strong no-pinch handle
- New ultra-flex cable design, includes handle and cable
- Set includes 1/2", 3/4", and 1" cable plus handle

Item #	Description	Price 1	Price 2
90-483	Complete Set & Handle	90.51	79.65

"Get Swet"

WHY USE JET SWET?

- Quick work on all full-port ball & gate valves & fittings
- Solder with water in lines
- Repair copper pipe
- Repair PVC pipe
- Change MIP or FIP fittings
- Working pressure up to 60 PSI
- Available in sizes 1/2" thru 4"



**HEAVY-DUTY
CARRYING CASE
AVAILABLE
HOLDS SIZES 1/2" TO 2"**

- Eliminates:
- Water Syphoning
- Main valve seeping water
- Bread clogging lines
- Freon to freeze the lines

The replacement for "plumbers bread". Finally the Plumber has a low cost and highly effective way to solve the age old problem of having to wait for the water to drain before he can solder.

The Jet Swet tool eliminates the need to wait for the water to stop draining or siphoning before you can solder copper or glue PVC pipes. The tools insert through a valve or fitting to seal off the water so that they may be replaced, water free. When repairing pinholes in a water line, valves or unions can be installed to keep the water away from the repair. This new technique developed by a working master plumber makes repair and replacement work safe where there is a water siphoning danger. Works on most full port gate and ball valves. Also allows male and female fittings to be replaced or installed. Kit contains up to six sizes with carrying case. 1/2", 3/4", 1", 1-1/4", 1-1/2", 2".

Item #	Description	Price 1	Price 2
90-900	Full Kit - Sizes 1/2" to 2" (Shown)	391.56	344.57
90-902	Small Kit - Sizes 1/2", 3/4" and 1" (Without Case)	178.26	156.87

Stock Service System™

Make your parts inventory a profit center.
Do it yourself parts supply house.
Visit www.HodesCo.com for More Details

Price 1	Price 2
Order Less Than \$500	Order \$500 or More



Phone: 1-800-777-6500
Fax: 1-800-982-5934
Web: www.HodesCo.com



**LIQUILOCK
GEL**

(314174)



- Solidifies water in approximately 4 minutes to help prevent drips and leaks when removing a toilet
- Use 1 package for a 1.6-gal. toilet and 2 packages for a 3.5-gal. toilet
- Non-toxic
- Easily flushes away with water once toilet repair is complete

Item #	Description	Price 1	Price 2
80-195	Liquilock Gel -0.6oz Pack	3.42	3.01

**General
PIPE CLEANERS
HANDY™**

(D-25-2)



- Turn by hand or remove handle and attach to a drill
- Collect chuck tightens firmly on cable with just a quarter turn
- Durable steel container with comfortable turning sleeve
- Holds up to 35 ft. of 3/8" or 50 ft. of 1/4" or 5/16" cables

Item #	Description	Price 1	Price 2
91-114	Handy™ w/25' x 1/4" Cable	169.88	149.49

**TOILET BOWL
PROTECTOR**



- Toilet Bowl Protector for use with closet augers
- Universal, fits all standard toilets
- Extra-wide gooseneck end accommodates all brands & styles of closet augers, including the largest bulb-head & drop head augers

Item #	Description	Price 1	Price 2
90-269	T-Bowl Shield	34.02	29.94

**General
PIPE CLEANERS**

**TELETUBE®
URINAL AUGER**

(TU4)



- Gets through urinals where other snakes can't
- 48" long spring specially coiled for cleaning urinals
- Spring telescoping from guide tube to clear stoppage beyond urinal
- Compact and durable design includes: 1-1/4" zinc plated steel outer tube, hexagonal aluminum inner tube, galvanized steel push rod, rubber bumper to protect bowl, aluminum turning handle, vinyl grip handle and grip-clip to attach spring when not in use.

Item #	Description	Price 1	Price 2
91-115	2' - 4' Urinal Auger	37.92	33.37
91-117	Cable Only	15.00	13.20

**TELESCOPING
FLEXICORE
CLOSET AUGERS**

(T6FL)
(T6FL-DH)



- Telescoping auger clears stoppages beyond bowl
- Extra three feet of cable in handle
- Double spring gives tremendous resistance to kinking
- Flexible downhead slides through bowl, springs around corners
- Vinyl bowl guard and vinyl handle with "grip clip" to attach cable
- Guaranteed against breaking for a full year

Item #	Description	Price 1	Price 2
90-202	3' - 6' Auger	70.82	62.32
90-204	3' - 6' Auger w/Down Head	80.19	70.57

**General
PIPE CLEANERS**

**FLEXICORE
CLOSET AUGERS**

(3FL)
(3FL-DH)



- Vinyl guard protects bowl
- Brass finish steel tube, die cast handles
- Double spring gives tremendous resistance to kinking
- Flexible downhead slides through bowl, springs around corners
- Guaranteed against breaking for a full year

Item #	Description	Price 1	Price 2
90-200	3' Closet Auger	44.82	39.44
90-201	3' Auger w/Down Head	53.93	47.46

**General
PIPE CLEANERS
DOWN HEAD
CABLE**

(25FL1DH)



- For hand operation down the waste - not up the stack
- Flexible wire cables
- Each steel cable is wound tightly over a wire rope with a slight space between each coil turn to ensure proper flexibility

Item #	Description	Price 1	Price 2
90-220	1/4" x 25' w/Down Head	76.08	66.95

**General
PIPE CLEANERS
FLEXICORE®
WIRE ROPE
INNERCORE CABLE
WITH DOWNHEAD**

(25HEI-DH)



- Heavy-gauge wire coiled around aircraft-type wire rope
- Has unequalled strength and the right amount of flexibility
- So tough it carries a one-year warranty against breakage

Item #	Description	Price 1	Price 2
91-108	1/4" x 25' w/Down Head	58.41	51.40

**General
PIPE CLEANERS**

**STANDARD
AUGER**



- 3 foot
- Rubber guard
- Wood handle
- Designed for homeowner

Item #	Description	Price 1	Price 2
90-655	Auger	8.92	7.85

TOOLS

TOOLS



**CHEMICALS
COMPOUNDS, TOOLS
UTILITY & HVAC**

HIGH QUALITY CLEANING BRUSHES



- Twisted wire handle - Stainless steel brush - 144 per case
- Extra thick mass of steel wire ensures perfect cleaning job with minimum effort

SOLD IN PKG QTY ONLY

Item #	Description	Pkg Qty	Price 1	Price 2
90-541	1/2" CC	12	3.09	2.72
90-542	3/4" CC	12	3.20	2.82
90-543	1" CC	12	3.64	3.20
90-544	1-1/4" CC	12	3.81	3.35
90-545	1-1/2" CC	6	3.94	3.47
90-546	2" CC	6	4.03	3.55

CARBON STEEL WIRE FITTING BRUSH WITH HAND-FIT HANDLE



- Priced per each
- 144 per case
- Size shown on handle
- Single spiral 2-ply carbon steel wire construction
- Solid plastic hand-fitting handle with convenient hang hole

**SOLD 12 PER
PACKAGE
ONLY**

Item #	Description	Pkg Qty	Price 1	Price 2
90-547	1/2" Wire Brush	12	2.35	2.07
90-548	3/4" Wire Brush	12	2.63	2.31
90-649	1" Wire Brush	12	2.89	2.54

ECONOMY CLEANING BRUSHES



- Twisted wire handle
- Stainless steel brush
- 144 per case
- Thick mass of steel wire ensures perfect cleaning job with minimum effort

**SOLD 12 PER
PACKAGE
ONLY**

Item #	Description	Pkg Qty	Price 1	Price 2
90-520	1/2" CC	12	1.77	1.56
90-522	3/4" CC	12	1.90	1.67

HARD HEAD FITTING BRUSHES WITH HAND-FIT HANDLE



**SOLD 12 PER
PACKAGE
ONLY**

Item #	Description	Pkg Qty	Price 1	Price 2
90-538	1/2" Hard Head Brush	12	5.88	5.17
90-539	3/4" Hard Head Brush	12	6.06	5.33

4-IN-1 FITTING BRUSH



- High-carbon steel I.D. brush
- Hard-tempered steel O.D. brush
- High-impact polystyrene cover
- Use to clean 1/2 in. and 3/4 in. copper and plastic tubes

Item #	Description	Price 1	Price 2
90-583	4-in-1 Fitting Brush	11.84	10.42

BLUE MONSTER ALUMINUM OXIDE OPEN MESH ABRASIVE



- Premium blended 165 grit white aluminum oxide
- Cuts and scores surfaces faster for more effective cleaning and deburring
- 21 x 21 Mesh - larger holes prevents "loading" and allows contractors to rinse the mesh clean

Item #	Description	Price 1	Price 2
82-136	Open Mesh 2" x 10 yd Roll	19.40	17.07

SOFT TWIST FITTING BRUSH



- Stainless steel bristles
- Easy to grip
- Non-slip handle

SOLD IN PKG QTY ONLY

Item #	Description	Pkg Qty	Price 1	Price 2
90-531	1/2" ID x 5/8" OD	12	2.80	2.46
90-532	3/4" ID x 7/8" OD	12	2.86	2.52
90-533	1" ID x 1-1/8" OD	12	3.20	2.82
90-534	1-1/4" ID x 1-3/8" OD	8	3.31	2.91

SAND CLOTH



120 GRAIN SAND — EMERY CLOTH
1 PER BOX - 24 PER CARTON

Item #	Description	Price 1	Price 2
90-560	1-1/2" x 30' Roll (10 yds)	4.94	4.35

WET - O - DRY PERMANENT SAND CLOTH



- A permanent sand cloth. You can see through it. Besides being a terrific cleaner for copper tube, it's very effective for cleaning the face of a flush valve seat.

PACKAGED IN DISPLAY BOX 1 PER BOX - 24 PER CARTON

Item #	Description	Price 1	Price 2
90-561	1-1/2" x 15' Roll (5 yds)	5.18	4.56
90-565	1-1/2" x 30' Roll (10 yds)	8.57	7.54
90-562	1-1/2" x 75' Roll (25 yds)	19.07	16.78

COPPER CLEANING PAD



SOLD 10 PER PACKAGE ONLY

Item #	Description	Price 1	Price 2
90-537	4" x 6"	.55¢	.48¢

WET-CUT WATERPROOF CLOTH



- 100% resistant to water, cutting oils, grease, chemicals and other solvents
- Does not need to be "flexed"
- 120 grit grain, "J" weight cloth
- The best choice for air conditioning parts

Item #	Description	Price 1	Price 2
90-572	1-1/2" x 75' Roll	15.53	13.67

DEBURRING TOOL



- Plastic body
- Blade made out of high carbon steel
- Includes spare blades stored in body
- 1 per card

Item #	Description	Price 1	Price 2
90-188	Deburring Tool	6.88	6.05
90-288	Replacement Blades (Sold 5 Per Only)	1.59	1.40

Price 1 Order Less Than \$500
Price 2 Order \$500 or More

HODES CO
PROFESSIONAL PLUMBING PARTS

Phone: 1-800-777-6500
Fax: 1-800-982-5934
Web: www.HodesCo.com



**WATERPROOF
SHOE/BOOT
COVER**



- Bigger and Better Design Made Specifically for Service Industry Professionals
- Prevents Tracking Dirt and Dry Debris in Client's Homes
- Stronger Than Other Shoe Covers on the Market
- Fits Up to a Size 18 Work Boot
- Waterproof, Plastic Material
- 120 per case

Sold 40 Pairs Per Box - Priced Per Pair

Item #	Description	Price 1	Price 2
91-181	Black Shoe/Boot Cover	.56¢	.49¢
91-182	Green Shoe/Boot Cover	.56¢	.49¢
91-183	Dark Blue Shoe/Boot Cover	.56¢	.49¢
91-184	Light Blue Shoe/Boot Cover	.56¢	.49¢
91-185	Orange Shoe/Boot Cover	.56¢	.49¢
91-188	Pink Shoe/Boot Cover	.56¢	.49¢
91-189	Yellow Shoe/Boot Cover	.56¢	.49¢
91-194	Red Shoe/Boot Cover	.56¢	.49¢

**CLOTH-LIKE
SHOE/BOOT
COVER**



- Bigger and Better Design Made Specifically for Service Industry Professionals
- Prevents Tracking Dirt and Dry Debris in Client's Homes
- Stronger than Other Shoe Covers on the Market
- Fits Up to a Size 18 Work Boot
- Breathable, Cloth-like Material
- 150 per case

Sold 50 Pairs Per Box - Priced Per Pair

Item #	Description	Price 1	Price 2
91-140	White Shoe/Boot Cover	.56¢	.49¢
91-141	Black Shoe/Boot Cover	.56¢	.49¢
91-142	Dark Green Shoe/Boot Cover	.56¢	.49¢
91-143	Bright Green Shoe/Boot Cover	.56¢	.49¢
91-144	Light Blue Shoe/Boot Cover	.56¢	.49¢
91-145	Dark Blue Shoe/Boot Cover	.56¢	.49¢
91-146	Orange Shoe/Boot Cover	.56¢	.49¢
91-147	Pink Shoe/Boot Cover	.56¢	.49¢
91-148	Yellow Shoe/Boot Cover	.56¢	.49¢
91-149	Red Shoe/Boot Cover	.56¢	.49¢

**DISPOSABLE UNIFORM
COVERALLS &
SHOE COVERS**



- 5 pockets
- Breathable
- Bootleg cut
- Dark blue color
- Elastic wrist band

Item #	Description	Price 1	Price 2
91-192	Disposable Uniform	7.68	6.76

COVERS/PROTECTION

**NEO SHIELD
FLOOR
PROTECTION**



- Flexible
- Slip-Resistant
- Lightweight
- Neo Shield - 27" x 180'
- Keep your job site floors and counters safe from damage and debris.
- Protect hardwood, ceramic tile, linoleum and carpet surfaces

Item #	Description	Price 1	Price 2
91-910	Red Neo Shield - 27" x 180'	837.31	736.83

**KNEE PRO
ULTRA FLEX III
KNEEPADS**



- With carry bag
- Full protection jointed knee pads
- Tough, flexible outer shells can withstand extreme heat & cold and are resistant to chemicals
- Kneepads are equipped with soft elastic woven straps & speed clips for quick on/off & easy adjustments while worn

Item #	Description	Price 1	Price 2
91-127	Kneepads Pair	55.61	48.94

**PRO SHIELD
FLOOR PROTECTION**



- Light weight
- Protects floors, counters and other surfaces
- All purpose hard surface protection
- Highly Absorbent
- Leak-proof backing
- Slip resistant

Item #	Description	Price 1	Price 2
91-920	Pro Shield - 24" x 20'	80.50	70.84
91-922	Pro Shield - 36" x 100'	370.85	326.35

**WATER SHIELD
FLOOR PROTECTION**



- Water Shield - 36" x 300'
- Water resistant paper
- Protect hardwood, ceramic tile, travertine, marble and more
- Non-staining
- Made from two strong kraft papers
- Does not tear under normal traffic wear

Item #	Description	Price 1	Price 2
91-914	Water Shield - 36" x 300'	113.67	100.03

**MULTI SHIELD
FLOOR PROTECTION**



- Self-adhering mat for multi surfaces
- Will not leave a sticky residue
- Shields work area from dirt, moisture and liquids
- Light-weight and breathable
- Reusable and easily rolls up
- Durable, tear-proof and hard-wearing

Item #	Description	Price 1	Price 2
91-924	Multi Shield - 24" x 200'	81.73	71.92
91-926	Multi Shield - 36" x 200'	108.74	95.69

GLOVES



**CHEMICALS
COMPOUNDS, TOOLS
UTILITY & HVAC**

XL BLACK NITRILE PROTECTIVE GLOVE POWDER FREE



- Black Nitrile Gloves
- Superb Tensile Strength
- Powder Free to Not Compromise Adhesive Seals or Fresh Paint
- Oil Resistant
- 5 mil Thickness
- 3x the Puncture Resistance of Latex or Vinyl

SOLD 100 PER BOX ONLY

Item #	Description	Price 1	Price 2
91-166	Large Black Nitrile Gloves	.16¢	.14¢
91-168	X-Large Black Nitrile Gloves	.16¢	.14¢
91-172	XX-Large Black Nitrile Gloves	.16¢	.14¢

XL BLACK NITRILE PROTECTIVE GLOVE POWDER FREE WITH EXTENDED CUFF



- Black Nitrile Gloves with Ext. Cuff
- Superb Tensile Strength
- Powder Free to Not Compromise Adhesive Seals or Fresh Paint
- Oil Resistant
- 5.5 mil Thickness at Palm
- 7.5 mil Thickness at Fingertip
- 3x the Puncture Resistance of Latex or Vinyl

SOLD 100 PER BOX ONLY

Item #	Description	Price 1	Price 2
91-167	Large Black w/Extended Cuff	.20¢	.18¢
91-169	X-Large Black w/Extended Cuff	.20¢	.18¢
91-171	XX-Large Black w/Extended Cuff	.20¢	.18¢

LATEX PROTECTIVE GLOVE WITH POWDER OR POWDER FREE



- Large, 5 MIL vinyl
- 100 per bar coded display box
- Priced per each

SOLD 100 PER BOX ONLY

Item #	Description	Price 1	Price 2
91-156	Glove w/Powder (each)	.13¢	.11¢
91-158	Powder Free Glove (each)	.15¢	.13¢

BROWN JERSEY GLOVES



- Flute pattern
- Knit wrist great for cold weather glove liners and general purpose light duty work gloves

Item #	Description	Price 1	Price 2
91-154	Brown Jersey Gloves (pair)	1.55	1.36

BROWN JERSEY LINED GLOVES



- 14 oz. slip-on style
- 9 oz. brown jersey
- Fully lined with 5 oz. red jersey for extra warmth

Item #	Description	Price 1	Price 2
91-155	Jersey Gloves (pair)	3.64	3.20

ROOTER GLOVES DOUBLE PALM LEATHER



- Double layer side split leather
- Second layer covering the full wing thumb, palm, wrap around index finger and little finger
- Leather knuckle strap, leather finger tips, full jersey lined palm and thumb
- Blue striped back with 2-1/2" rubberized cuff

Item #	Description	Price 1	Price 2
91-153	Rooter Leather Gloves (pair)	4.48	3.94

ROTO GLOVES WITH KNIT WRIST



- Knit wrist
- Jersey lined, liquid proof pvc gloves
- PVC chips on the fingers & palm let you hold spinning cables with less abrasion

Item #	Description	Price 1	Price 2
91-164	Roto Glove Pair w/Knit Wrist	10.58	9.31

SUPER GLOVES



- Rubber coated knit glove
- XLarge

Item #	Description	Price 1	Price 2
91-163	Super Gloves (pair)	1.70	1.50

RENEGADE SEWN WITH KEVLAR® THREAD SPECIAL SELECT LEATHER PALM GLOVES



- Priced and sold as a pair
- Made w/select side split leather & sewn w/durable Kevlar
- Feature a full second layer of premium select, side split leather covering entire palm area and two middle fingers

Item #	Description	Price 1	Price 2
91-157	Renegade™ Gloves (pair)	13.26	11.67

RUBBER-COATED GRIPIT GLOVES



- Easy off safety cuff
- A cotton jersey glove with a soft latex rubber coating
- Crinkle finished rubber coating - awesome gripping power
- Flexible enough to work with small objects
- Use wet or dry and great for drain snake use

Item #	Description	Price 1	Price 2
91-152	Rubber Coated Gloves (pair)	4.99	4.39

ROTO GLOVES WITHOUT CUFFS



- 12" length
- Jersey lined, liquid proof pvc gloves
- PVC chips on the fingers & palm let you hold spinning cables with less abrasion

Item #	Description	Price 1	Price 2
91-160	Roto Gloves No Cuffs (pair)	10.09	8.88

ROTO GLOVES W/SAFETY CUFFS



- With safety cuffs
- Jersey lined, liquid proof pvc gloves
- PVC chips on the fingers & palm let you hold spinning cables with less abrasion

Item #	Description	Price 1	Price 2
91-162	Roto Gloves w/Cuffs (pair)	8.83	7.77

Price 1	Price 2
Order Less Than \$500	Order \$500 or More

HODES CO
PROFESSIONAL PLUMBING PARTS

Phone: 1-800-777-6500
Fax: 1-800-982-5934
Web: www.HodesCo.com



FLAME-GARD



- For soldering brazing
- 9-1/2" x 12" Pad
- Non-asbestos, spun-ceramic aluminum backing – protects wood, painted, or metal surfaces from heat and flame of a torch
- Belongs on every service truck and in every tool box

Item #	Description	Price 1	Price 2
90-530	Flame-Gard	17.66	15.54

**TurboTorch
HAND TORCH KIT**



(ST-9)

- Built for professionals
- 360° swivel tip for easy use
- Rugged brass regulator
- Interchangeable tip
- Operates with either MAPP® or Propane gas
- Components: ST-R pressure regulator CGA-600, ST-3 tip

Item #	Description	Price 1	Price 2
90-694	Hand Torch Kit	120.69	106.21

GAS TEST GAUGE



- 2" Gauge
- Adapts to 3/4" MPT

Item #	Description	Price 1	Price 2
91-254	0#-15# PSI Rating	11.42	10.05
91-255	0#-30# PSI Rating	11.42	10.05
91-256	0#-60# PSI Rating	11.42	10.05
91-257	0#-100# PSI Rating	11.42	10.05
91-258	Body Only with Air Valve	5.95	5.24

PRESSURE GAUGE



1/4" MPT—ONE TO A BOX

Item #	Description	Price 1	Price 2
91-219	2" Dia.-100# Ga. PSI	8.22	7.23
91-200	2" Dia.-15# Ga. PSI	5.97	5.25
91-201	2-1/2" Dia.-30# Ga. PSI	10.90	9.59
91-203	2-1/2" Dia.-100# Ga. PSI	5.97	5.25
91-206	2-1/2" - 300# Ga. PSI	10.90	9.59

SPARK LIGHTER



ROUND FILE — SINGLE FLINT

- File rotates, provides fresh surface for the flint
- Large hood traps more gas
- File has keen cutting surface
- Flints good for 1,500 ignitions

12 PER BOX

Item #	Description	Price 1	Price 2
91-175	Lighter	3.77	3.32



**WORTHINGTON
PROPANE TORCH**



(LT90)

- Self Igniting
- Swirl Flame Hand Torch

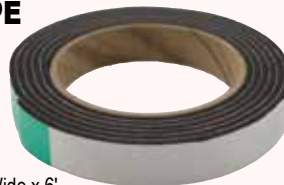
Item #	Description	Price 1	Price 2
90-681	Worthington Torch	95.09	83.68

POLY INSULATION FOR ELBOWS



Item #	Description	Price 1	Price 2
74-824	Poly Insulation For 1/2"	1.86	1.64
74-825	Poly Insulation For 3/4"	2.09	1.84
74-826	Poly Insulation For 1"	2.50	2.20
74-827	Poly Insulation For 1-1/4"	2.80	2.46

ONE SIDED FOAM TAPE



- 1/8" Thick x 3/4" Wide x 6'
- Replacement cover gasket material for gas-tight and water-tight seals

Item #	Description	Price 1	Price 2
70-127	3/4" x 72"	5.02	4.42

WATER TEST GAUGE



- 2-1/2" Gauge throttle plug
- 0-300 PSI dial unbreakable face
- 3/4" female hose connection

Item #	Description	Price 1	Price 2
91-250	Water Test Gauge	13.45	11.84



**MAPP® & PROPANE
SELF LIGHTING TORCH**



(TL-44)

- Replaces TL-3 and TL-4
- Replaceable tip-end
- Heavy-duty piezo ignitor
- Machined rotor
- Wide lighting range
- Cuts brazing time up to 30%
- Use with CSA 600, 1 lb. MAPP® or propane tanks

Item #	Description	Price 1	Price 2
90-682	Self Lighting Torch	185.08	162.87

**HOT DAM
HEAT STOPPING
COMPOUND**



- 12 oz Tub
- No drip, mess or residue
- Completely stops heat transfer down ferrous or non-ferrous pipe, easily molds like clay to any shape you need, can be used over and over
- Use when pipe freezing to protect Ice Plugs & jackets when welding or soldering

Item #	Description	Price 1	Price 2
90-265	Reusable Compound	34.02	29.94

POLY INSULATION FOR TEES



Item #	Description	Price 1	Price 2
74-820	Poly Insulation For 1/2"	2.82	2.48
74-821	Poly Insulation For 3/4"	3.09	2.72
74-822	Poly Insulation For 1"	3.31	2.91
74-823	Poly Insulation For 1-1/4"	3.74	3.29

WATER TEST GAUGE



Item #	Description	Price 1	Price 2
91-218	2" 0-100 PSI	3.78	3.33

WATER TEST GAUGE 2-1/2" Gauge throttle plug
0-300 PSI dial unbreakable face
3/4" female hose connection

Excellent to determine if P/T valve is leaking from failure or if leaking is caused by surge or excessive pressures. (Attach gauge to Boiler Drain Valve overnight.) LAZY hand operates over entire gauge range of 0-300 psi. Regular pressure hand (shown at zero) pushes LAZY hand (shown at 250 lbs.) to peak operating or surge pressure point where it remains until you manually reset it.



Item #	Description	Price 1	Price 2
91-251	Water Test Gauge	15.77	13.88

TOILET PLUNGERS



**CHEMICALS
COMPOUNDS, TOOLS
UTILITY & HVAC**

ProGold™ *BIG YELLA* Hydro-Thrust Plunger Lasered Plunger

For as low as **10.05** each you can keep your name and phone number literally at your customer's and prospect's fingertips... just when they need you most!

*Great Give-Aways for
Service Agreements or
Other "Thank You's"*

YOUR COMPANY
LOGO, NAME & PHONE#
GOES HERE

21" NATURAL WOOD
HANDLE



**SOLD IN FREIGHT-FREE CASE QUANTITIES OF 36 ONLY
INCLUDES FREE CUSTOM LASERED IMPRINT**

Item #	Description	Price 1	Price 2
90-701	Private Lasered - 36 Per Case Only	11.42	10.05

6 INCH FORCE CUP



Item #	Description	Price 1	Price 2
90-101	6" Force Cup Plunger	12.14	10.68

ProGold™ *BIG YELLA* Hydro-Thrust Plunger



- Pro style heavy duty
- 21" wood handle

Item #	Description	Price 1	Price 2
90-704	Yellow Hydro-Thrust Plunger	9.02	7.94

PROGOLD™ *BIG YELLA* HYDRO-THRUST PLUNGER

YOUR COMPANY
LOGO, NAME & PHONE#
ADHESIVE LABEL
HERE



Sold individually private labeled with your company logo & phone number in your company colors



Item #	Description	Price 1	Price 2
90-702	Adhesive Private Label	12.01	10.57

SUPER FORCE CUP



Item #	Description	Price 1	Price 2
90-107	Super Force Cup Plunger	14.56	12.81

SOIL PIPE FORCE CUP



Preferred for all types of sinks, bowls and drains
Handle included

Item #	Description	Price 1	Price 2
90-104	Force Cup Plunger	11.33	9.97

SEALMASTER® FREE FLO FORCE CUP



Preferred for all types of sinks, bowls and drains
Handle included

Item #	Description	Price 1	Price 2
90-102	Force Cup	7.63	6.71

korky. BEEHIVE MAX WITH HOLDER



Item #	Description	Price 1	Price 2
90-119	Korky Beehive Max Plunger	22.49	19.79

korky. PLUNGER MAXPERFORMANCE



- Guaranteed to fit all shapes and sizes of toilet bowls
- PowerFLEX design

Item #	Description	Price 1	Price 2
90-113	Korky MaxPerformance	13.59	11.96

korky. PLUNGER



- Pro style heavy duty
- 21" wood handle
- Flexible, durable non-marking rubber

Item #	Description	Price 1	Price 2
69-100	Korky® Plunger	6.00	5.28

Price 1	Price 2
Order Less Than \$500	Order \$500 or More



Phone: 1-800-777-6500
Fax: 1-800-982-5934
Web: www.HodesCo.com



DRYER VENTS AND TAPE

HONOR THY PLUMBER™ PROFESSIONAL GRADE PRODUCTS

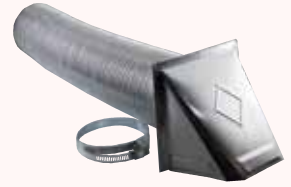
VENT HOOD WITH PIPE



SOLD 10 PER BOX ONLY

Item #	Description	Price 1	Price 2
53-411	4" Hood with Pipe	6.66	5.86

FLEXIBLE DRYER VENT KIT



1 SET PER BOX - 12 PER CASE

Item #	Description	Price 1	Price 2
53-412	4" x 8' Vinyl Dryer Vent	11.67	10.27
53-427	4" x 8' Aluminum Dryer Vent	19.85	17.47

GALVANIZED PIPE



Item #	Description	Price 1	Price 2
53-432	3" x 24" Galvanized Vent Pipe	3.93	3.46

GALVANIZED ELBOWS



Item #	Description	Price 1	Price 2
53-434	3" Galvanized Adjustable Elbow	3.28	2.89
53-435	4" Galvanized Adjustable Elbow	4.73	4.16

TENSION CLAMPS



Item #	Description	Price 1	Price 2
53-416	4" Tension Clamps	.94¢	.83¢

ALL WEATHER ELECTRICAL TAPE



For professional use
temp. range -10 to +170F
600 volt • excellent memory

Item #	Description	Pkg Qty	Price 1	Price 2
70-157	3/4" x 60' Vinyl Roll	10	.84¢	.74¢

PREMIUM GRADE HEAVY CLOTH DUCT TAPE 2" x 180' (60 YARDS)



Item #	Description	Pkg Qty	Price 1	Price 2
70-133	2" x 180' Tape	24	8.98	7.90

ALUMINUM FOIL TAPE

2" x 150' (50 YARDS)

2 MIL
Thick



Item #	Description	Pkg Qty	Price 1	Price 2
70-129	2" x 150' Tape	24	15.61	13.74



TEFLON TAPE 1/2" x 260"

Plastic covered spool
MIL-SPEC T-27730a



- High Quality
- Thickness: .003"
- Density: .35g/cm³

SOLD 10 PER PACKAGE ONLY

Item #	Description	Price 1	Price 2
82-107	1/2" x 260" Tape	.31¢	.27¢

TEFLON TAPE 1/2" x 520"

Plastic covered spool
MIL-SPEC T-27730a



- High Quality
- Thickness: .003"
- Density: .35g/cm³

SOLD 10 PER PACKAGE ONLY

Item #	Description	Price 1	Price 2
82-108	1/2" x 520" Tape	.49¢	.43¢



BLUE MONSTER THREAD SEAL TAPE 1/2" x 1429"



- Temperature range -450F to +500F (-268C to +260C)
- Seals fittings at pressures up to 10,000 PSI
- Professional grade PTFE thread seal tape
- Acts as a thread lubricant and anti-seize

Item #	Description	Price 1	Price 2
82-130	1/2" x 1429" Tape	4.95	4.36
82-137	3/4" x 1429" Tape	7.41	6.52

TEFLON TAPE 3/4" x 260"

Plastic covered spool
MIL-SPEC T-27730a



- High Quality
- Thickness: .003"
- Density: .35g/cm³

SOLD 10 PER PACKAGE ONLY

Item #	Description	Price 1	Price 2
82-106	3/4" x 260" Tape	.42¢	.37¢

TEFLON TAPE

Plastic covered spool
MIL-SPEC T-27730a



- High Quality
- Thickness: .003"
- Density: .35g/cm³

SOLD 10 PER PACKAGE ONLY

Item #	Description	Price 1	Price 2
82-109	3/4" x 520" Tape	.73¢	.64¢
82-110	3/4" x 1296" Tape	2.00	1.76

TEFLON TAPE 1" x 520"

Plastic covered spool
MIL-SPEC T-27730a



- High Quality
- Thickness: .003"
- Density: .35g/cm³

SOLD 10 PER PACKAGE ONLY

Item #	Description	Price 1	Price 2
82-112	1" x 520" Tape	1.23	1.08

Phone: 1-800-777-6500

Fax: 1-800-982-5934

Web: www.HodesCo.com



Price 1

Price 2

Order Less Than \$500

Order \$500 or More

OUTLET BOXES



**CHEMICALS
COMPOUNDS, TOOLS
UTILITY & HVAC**

Oatey QUADTRO® (38535) WASHING MACHINE OUTLET BOX SINGLE LEVER VALVE



- Top or bottom valve mount

Item #	Description	Price 1	Price 2
57-518	Single Lever Sweat Valve	62.22	54.75

Oatey (38551) 2" QUADTRO® WASHING MACHINE OUTLET BOX



- Double outlet with 1/4 turn compression ball valves

Item #	Description	Price 1	Price 2
57-519	Washing Machine Outlet Box	40.60	35.73

Oatey 2" WASHING MACHINE (38673) OUTLET BOX (38871) WITH DOUBLE OUTLET (38870) (BACK TO BACK) (38650)



- Female x male adapters
- Long shank MIP valves installed

Item #	Description	Price 1	Price 2
57-505	Outlet Box with Valves	30.26	26.63
57-498	Cold Long Shank Valve Only	23.61	20.78
57-499	Hot Long Shank Valve Only	23.61	20.78
57-500	Outlet Box (only)	12.67	11.15
57-525	Plastic Nut Only	.76¢	.67¢

Oatey (38530) 2" QUADTRO® WASHING MACHINE OUTLET BOX



- Double outlet with 1/4 turn sweat ball valves

Item #	Description	Price 1	Price 2
57-501	WMOB with 1/4 Turn Valves	32.48	28.58

Oatey CENTRO II™ (38100) WASHING MACHINE OUTLET BOX



- Copper Sweat

Item #	Description	Price 1	Price 2
57-508	1/4 Turn Standard WMOB	27.41	24.12

Oatey (38899) 2" WASHING MACHINE OUTLET BOX OFFSET DRAIN W/LONG SHANK SINGLE LEVER VALVE INSTALLED



Item #	Description	Price 1	Price 2
57-513	2" WMOB with Offset Drain	70.73	62.24

SPECIALTY PRODUCTS™ (OB321) WASHING MACHINE OUTLET BOX WITH PEX VALVES



- Design provides left, center and right waste options
- Knockouts accept either waste or water lines
- E-Z Turn Quarter Turn Ball Valves
- Durable brass resists cracking and corrosion
- Valve meets or exceeds ASME A112.18.1M Standard

Item #	Description	Price 1	Price 2
57-515	WMOB with Pex Valves	27.83	24.49

METAL WASHING MACHINE BOX



Item #	Description	Price 1	Price 2
57-522	Metal Washing Machine Box	117.19	103.13

Sioux Chief (696-G2303MF) OXBOX™



- Boxes mount securely to stud
- Separates supply & drainage systems into two stud bays
- Separate boxes offer flexible layout
- Drain knockout is easy to remove with pliers

Item #	Description	Price 1	Price 2
57-526	w/MIP and Fem Sweat Valves	30.47	26.81

Oatey 2" QUADTRO® (38537) WASHING MACHINE OUTLET BOX W/SINGLE LEVER VALVE & PEX ADAPTERS



Item #	Description	Price 1	Price 2
57-514	2" WMOB	72.80	64.06

Sioux Chief (696-G2313MF) OXBOX™ WITH MINI-RESTER™



Item #	Description	Price 1	Price 2
57-527	1/2" Female Sweat with Mini-Resters	52.98	46.62

LF

OUTLET BOXES

Price 1	Price 2
Order Less Than \$500	Order \$500 or More



Phone: 1-800-777-6500
Fax: 1-800-982-5934
Web: www.HodesCo.com



(696-G1000MF)

**OXBOX™
ICE MAKER
OUTLET BOX
WITH FEMALE
SWEAT VALVE**



LF

Item #	Description	Price 1	Price 2
57-528	Ice Maker Box w/1/2" Valve	23.73	20.88



(696-G1010MF)

**OXBOX™
ICE MAKER
OUTLET BOX
WITH MINI-
RESTER™**



LF

Item #	Description	Price 1	Price 2
57-529	Ice Maker Box w/Mini-Rester	37.50	33.00

**Oatey
ICE
MAKER
BOX**

(38681)



- Dimensions 6"H x 6"W x 3-1/2"D - Mounts 16" CC
- Knockouts for various water supply routings
- Adjustable mounting straps for solid installation
- Adjustable face plate adapts from 1/8" to 3/4" panel, dry wall or plastered surfaces

LF

Item #	Description	Price 1	Price 2
43-257	With Valve	25.88	22.77

Oatey ICE MAKER BOX WITH NAILS (38611) (OB811)



- Nails pre-loaded
- No support brackets needed
- Right or left-hand installation
- Just nail in place
- Cut labor and material costs

LF

Item #	Description	Price 1	Price 2
43-256	Ice maker Box with Nails	27.10	23.85
57-516	Ice Maker Box with Pex Valves	20.76	18.27

Oatey ICE MAKER BOX (38951) (38810)



- Dimensions 6"H x 6"W x 3-1/2"D - Mounts 16" CC
- Knockouts for various water supply routings
- Adjustable mounting straps for solid installation
- Adjustable face plate adapts from 1/8" to 3/4" panel, dry wall or plastered surfaces

LF

Item #	Description	Price 1	Price 2
57-259	Outlet Box with Valve	37.82	33.28
43-258	Outlet Box Only	11.26	9.91

**ICE MAKER
PULL
STOP BOX
TRIM KIT**

FOR 57-270,
57-280 & 57-281



- Paintable
- Includes knob, escutcheon, two screws and red clip
- The trim screws onto the box so you don't have to worry about the faceplate warping due to the drywall or falling off

Item #	Description	Price 1	Price 2
57-275	Trim Kit for Pull Stop Box	1.58	1.39

UTILITY BOXES

**ICE MAKER
PULL STOP BOX
1/2" SWEAT CONNECTION** (OBPS-111-RK-LL)

SEE 57-275 TRIM KIT



- Requires a smaller cavity in the wall for installation
- Includes a snap on, protective cover to shield the valve during drywall installation
- Removal & replacement of the brass valve can be done in under a minute

LF

Item #	Description	Price 1	Price 2
57-270	Ice Maker 1/2" Sweat	12.24	10.77

**ICE MAKER
PULL STOP BOX
1/2" PEX CONNECTION** (OBPS-113-RK-LL)

SEE 57-275 TRIM KIT



- Requires a smaller cavity in the wall for installation
- Includes a snap on, protective cover to shield the valve during drywall installation
- Removal & replacement of the brass valve can be done in under a minute

LF

Item #	Description	Price 1	Price 2
57-280	Ice Maker 1/2" Crimp PEX	12.24	10.77

**ICE MAKER PULL
STOP BOX
UPONOR PEX** (OBPS-114-RK-LL)

SEE 57-275 TRIM KIT



- Rough-In kit includes box, valve & protective cover
- Patented design moves the angle-stop for icemaker water supply into the wall
- Eliminates need for a copper stub out
- 1/2" Uponor PEX

LF

NEW

Item #	Description	Price 1	Price 2
57-281	Ice Maker Pull Stop Box	12.24	10.77

**WATTS®
INDUSTRIES
ACCESS PANEL**



- Spring fit
- May be painted or wall papered

Item #	Description	Price 1	Price 2
57-302	Access Panel 8 x 8	23.77	20.92

**Oatey
ACCESS PANEL**



- Spring fit
- May be painted or wall papered

Item #	Description	Price 1	Price 2
57-303	Access Panel 6 x 9	14.17	12.47

**Fluidmaster®
ACCESS PANEL**

(AP-0808)
(AP-1414)



- Conceals/reveals plumbing
- Super-easy to install
- No framing required
- May be painted or wallpapered
- No visible clamps or screws
- 10 per case

Item #	Description	Price 1	Price 2
57-300	8" x 8" Access Panel	12.13	10.67
57-301	14" x 14" Access Panel	16.99	14.95

Phone: 1-800-777-6500

Fax: 1-800-982-5934

Web: www.HodesCo.com

HODES CO
PREFERRED PLUMBING PARTS

Price 1

Price 2

Order Less Than \$500

Order \$500 or More

UTILITY



**CHEMICALS
COMPOUNDS, TOOLS
UTILITY & HVAC**



(004705)

SWITCH



• Repairs all 50 series models

Item #	Description	Price 1	Price 2
55-054	Genuine Zoeller Switch	38.32	33.72

AUTOMATIC TRAP VENT



• NFS 24-approved—patent pending
• Patent no. 3605132
• ABS plastic
• 1-1/2" MIP

50 PER CASE

Item #	Description	Price 1	Price 2
53-230	Automatic Trap Vent	1.84	1.62

MR DRAIN AIR GAP



• Fits 1-1/2" and 2" metal or plastic standpipes
• Provides full backflow & backflow protection

Item #	Description	Price 1	Price 2
53-236	Air Gap Mr Drain	39.55	34.80

DISHWASHER DISPOSER CONNECTOR



• Four step sleeve with two adjustable steel clamps
• Packed in individual bag

Item #	Description	Price 1	Price 2
51-398	Connector w/2 worm gear clamps	1.93	1.70

DISHWASHER DISPOSER CONNECTOR



• Four step sleeve with four adjustable steel clamps
• Packed in individual bag

Item #	Description	Price 1	Price 2
51-399	Connector with four S.S. clamps	1.47	1.29

40/60 SQUARE D PRESSURE SWITCH

(MPS4060)



• Switch for Pumping Applications
• UL and CUL Approved.
• Pressure Setting 40/60
• 1/4" NPSF Internal Connection

Item #	Description	Price 1	Price 2
55-031	40/60 Pressure Switch	23.02	20.26

DISHWASHER AIR GAP



• Prevents waste from backing up into dishwasher
• No moving parts
• UPC/IAPMO approved

12 PER BOX

Item #	Description	Price 1	Price 2
51-401	Plastic Air Gap	2.31	2.03
51-403	Air Gap Cover Only	.50¢	.44¢
51-404	White Air Gap (Cap Only)	10.45	9.20
51-405	Brushed Nickel Gap (Cap Only)	10.20	8.98

DISHWASHER DISPOSER CONNECTOR



• Four step sleeve with two adjustable steel clamps
• Packed in individual bag

Item #	Description	Price 1	Price 2
51-394	Connector with two S.S. clamps	.16¢	.14¢

FERNCO® DISHWASHER DISPOSER CONNECTOR

(DWC-100)



Item #	Description	Price 1	Price 2
51-395	Disposer Connector	4.59	4.04

40/60 PRESSURE SWITCH

(FSG240)



• 225 PSI
• UL and CUL Approved.
• Pressure Setting 40/60
• Lead Free
• 1/4" NPT Female Connection

Item #	Description	Price 1	Price 2
55-030	40/60 Pressure Switch	11.05	9.72

HOSE GRIP CONNECTOR



• For standard laundry standpipe drains

Item #	Description	Price 1	Price 2
70-840	Hose grip connector	11.55	10.16

CLOTH INSERTED NEOPRENE HOSE FOR DISHWASHER DRAIN



• Cloth inserted

SOLD IN COIL OF 50 FEET ONLY

PRICED PER FOOT

Item #	Description	Price 1	Price 2
51-411	5/8" ID	1.11	.98¢
51-412	7/8" ID	1.78	1.57

DISHWASHER DISPOSER CONNECTOR KIT



• Includes rubber disposal adapter (7/8" x 5/8")
• (2) S.S. hose clamps
• (1) 5/8" barb fitting

Item #	Description	Price 1	Price 2
51-425	Dishwasher Disposal Connector Kit	2.83	2.49

Price 1	Price 2
Order Less Than \$500	Order \$500 or More



Phone: 1-800-777-6500
Fax: 1-800-982-5934
Web: www.HodesCo.com



FLOOR AND UTILITY DRAINS

PVC INSIDE PIPE FIT DRAIN WITH NICKEL BRONZE ROUND STRAINER



- Made in USA
- Installed after concrete is poured
- No mess with protective tape
- Save time with installation

Item #	Description	Price 1	Price 2
53-264	3" PVC Drain w/ 3-1/2" Strainer	23.91	21.04
53-265	4" PVC Drain w/ 4-1/2" Strainer	34.48	30.34

PVC INSIDE PIPE FIT CLEANOUT WITH NICKEL BRONZE ROUND COVER



- Made in USA
- Installed after concrete is poured
- No mess with protective tape
- Save time with installation

Item #	Description	Price 1	Price 2
53-266	3" PVC Cleanout w/ 3-1/2" Cover	28.33	24.93
53-267	4" PVC Cleanout w/ 4-1/2" Cover	43.36	38.16

PVC INSIDE PIPE FIT CLEANOUT WITH CAST IRON ROUND COVER



- Made in USA
- Installed after concrete is poured
- No mess with protective tape
- Save time with installation

Item #	Description	Price 1	Price 2
53-268	4" PVC Cleanout w/ 4-1/2" Cover	33.72	29.67

TRAP TAP FOR FLOOR DRAIN



- Use With:
5/8" ID hose, 7/8" ID hose,
1/2" PVC Pipe (glued, using a coupling) or
3/4" PVC Pipe (glued, no coupling needed)
- Installation kit includes: fitting, stainless steel
self-tapping mounting screw and rubber washer

Item #	Description	Price 1	Price 2
53-500	Trap Tap for Floor Drains	8.61	7.58

GENERAL PURPOSE PVC WITH STAINLESS STEEL DRAIN



- Fits over 2" schedule 40 DWV pipe or
inside 3" schedule 40 DWV pipe

Item #	Description	Price 1	Price 2
53-282	2"-3" PVC Drain	6.49	5.71

PVC INSIDE FIT PIPE DRAIN NICKEL



Item #	Description	Price 1	Price 2
53-237	4" PVC Inside Fit Pipe Drain	34.48	30.34

CAST IRON REPLACEMENT FLOOR DRAIN COVERS



Item #	Description	Price 1	Price 2
55-100	5" O.D. 1/4" Thick	4.08	3.59
55-101	6" O.D. 1/4" Thick	6.23	5.48
55-102	6-1/4" O.D. 1/4" Thick	6.66	5.86
55-103	6-1/2" O.D. 1/4" Thick	7.31	6.43
55-104	6-5/8" O.D. 1/4" Thick	7.74	6.81
55-106	7" O.D. 1/4" Thick	8.59	7.56
55-110	8" O.D. 1/4" Thick	10.95	9.64

ADJUSTABLE FLOOR DRAIN COVER 3-1/4"—6-3/4"



- 14 gauge stainless steel
- Four adjustable bolts
- Replaces old black cast iron covers

Item #	Description	Price 1	Price 2
53-295	7-1/4" Diameter	21.69	19.09

Sioux Chief PLASTIC FLOOR DRAIN



- Conforms to ASTM D-2665-PVC
- 2" tapped with 1-1/2" concealed cleanout & 2" HUB outlet

Item #	Description	Price 1	Price 2
53-291	2" PVC White	18.68	16.44

MULTI-PURPOSE FLOOR DRAIN



- 7" Dia. top - 6-3/4" grill
- Stainless steel screws
- 2" or 3" inlet socket
- 2-3/4" deep sump area allows greater drainage
- Use as an area way drain or with a trap

Item #	Description	Price 1	Price 2
53-196	PVC 2"-3"	9.45	8.32

SEAL DRAIN TRAP SEALER



- Stops floor drain odors and bugs
- Waterless trap protection
- Great for new construction and retro-fit

Item #	Description	Price 1	Price 2
53-233	3" Sure Seal Sealer	58.20	51.22

SEAL DRAIN TRAP SEALER



- Stops floor drain odors and bugs
- Waterless trap protection
- Great for new construction and retro-fit

Item #	Description	Price 1	Price 2
53-232	2" Sure Seal Sealer	52.18	45.92

SEAL DRAIN TRAP SEALER



- Stops floor drain odors and bugs
- Waterless trap protection
- Great for new construction and retro-fit

Item #	Description	Price 1	Price 2
53-234	3-1/2" Sure Seal Sealer	62.23	54.76

SEAL DRAIN TRAP SEALER



- Stops floor drain odors and bugs
- Waterless trap protection
- Great for new construction and retro-fit

Item #	Description	Price 1	Price 2
53-235	4" Sure Seal Sealer	66.99	58.95



B&G CIRCULATING PUMP COUPLER

(118709)



- Cast Iron
- For Pump # 4RD16, 4RD17, 4RC91 to 96
- Counterclockwise rotation
- Shaft size 1/2" x 1/2"

Item #	Description	Price 1	Price 2
48-133	Circulating Pump Coupler	52.03	45.79

GRUNDFOS COMFORT SYSTEM RETROFIT - HOT WATER RECIRCULATION

The Grundfos Comfort System is a pump and valve combination that delivers you hot water in an instant to any faucet or bath in your home.



- Built-in timer & linecord
- Retrofits to existing plumbing
- No return line required - Installs in less than one hour
- No electricity needed under the sink
- Uses less energy than a 25-watt light bulb
- Can save up to 16,000 gallons of water per year, per household

Item #	Description	Price 1	Price 2
56-500	Comfort System (Shown)	452.28	398.01
56-501	Comfort Valve Only	78.23	68.84
56-502	(2) 1/2" FNPS x 12" SS Hoses	13.13	11.55



**Make your parts inventory a profit center.
Do it yourself parts supply house.**
Visit www.HodesCo.com for More Details

WHITE PLASTIC CABLE CLAMPS



SOLD IN PACKAGES OF 100 ONLY

Item #	Description	Price 1	Price 2
70-971	1/4" Cable Clamp	.11¢	.10¢
70-972	3/8" Cable Clamp	.16¢	.14¢

GRUNDFOS UP10-16B5 ATLC NEW CONSTRUCTION - HOT WATER RECIRCULATION

- Unique Wet Rotor Design
- Conserves Water and Energy
- 1/2" Sweat with 115V Line cord
- Maintenance Free with Whisper quiet operation
- Built-in Timer, Power Cord and Aquastat
- Integrated Check Valve and Isolation Valve

Grundfos innovation offers the only traditional recirculation solution that provides all of the answers in one package. You pull the dedicated return line, the circulator does the rest.



Item #	Description	Price 1	Price 2
56-510	Hot Water Recirculator	442.49	389.39

GRUNDFOS SUPERBRUTE 3-SPEED CIRCULATOR PUMPS

- 3 pumps replace 37 competitor pumps – always have the right circulator
- Quick connect terminals – for easy installation
- Removable check valve – eliminates the need for an in-line flow check
- Patented electronic starting unit provides the highest starting torque of any circulators in its class (UPS15-58 only)
- Ceramic bearings – ensures years of quiet, trouble free operation
- Internal lip seal and filter – keeps debris out of rotor can
- Backed by an industry leading three-year warranty



Cross Reference Replacement Chart

Super Brute Family	Taco	Bell & Gossett	Armstrong
UPS15-58FC/FRC			
High Speed	005, 007, 008, 0010-IFC	NRF-22, LR-20WR	Astro 30
Medium Speed	005, 005-IFC, 007, 007-IFC, 008, 008-IFC, 0010-IFC, 00R-IFC	NRF-9F/LW	Astro 25
low Speed	005, 005-IFC, 006, 006-IFC		Astro 20

Item #	Description	Price 1	Price 2
56-520	Circulator Pump	149.49	131.55

Price 1	Price 2
Order Less Than \$500	Order \$500 or More



Phone: 1-800-777-6500
Fax: 1-800-982-5934
Web: www.HodesCo.com



WATER HEATER REPAIR

OPEN 24 HOURS

www.HodesCo.com

- Easy Online Ordering
- Stock Checking
- Customized Historical Usage Reports
- Inventory Control Audio Training
- Free Custom Bin Label Ordering

HIGH WATT DENSITY SCREW-IN WATER HEATER ELEMENT WITH ROUND RUBBER GASKET



Item #	Watts	Volts	Length	Price 1	Price 2
44-320	1500	120	7-5/8"	9.52	8.38
44-322	2000	120	7-5/8"	9.91	8.72
44-327	3500	240	12-9/16"	10.55	9.28
44-326	4500	240	13-9/16"	10.66	9.38
44-329	5500	240	13-9/16"	12.83	11.29

LIME-LIFE ELEMENT SCREW-IN

13-1/2" Length 240 Volt 4500 Watts



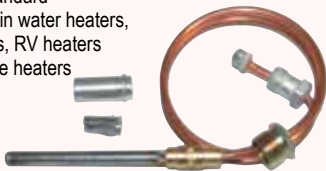
Highest grade nickel and chromium.

An ultra low-watt density element, the Lime-Life is designed to heat in lime and sand build-ups that will burn out ordinary elements. The Lime-Life also works best in areas where water has a high mineral content. Because of its sheath, the Lime-Life will even withstand dry-firing, one of the main reasons other elements fail.

Item #	Description	Price 1	Price 2
44-451	Screw-In Flange	40.84	35.94

White Rodgers UNIVERSAL THERMOCOUPLES

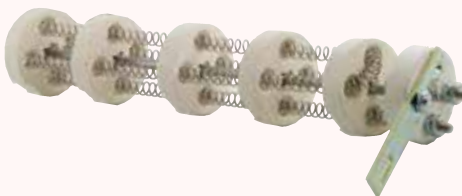
- Replaces all standard thermocouples in water heaters, central furnaces, RV heaters and many space heaters



Item #	Description	Price 1	Price 2
44-301	18"	6.92	6.09
44-302	24"	6.92	6.09
44-303	30"	7.91	6.96
44-304	36"	7.93	6.98

OPEN COIL DRY ELEMENT

Smaller nichrome wire



Item #	Description	Price 1	Price 2
44-454	1500 Watts, 120 Volts	17.17	15.11

TANK LEGS



Item #	Description	Price 1	Price 2
90-464	Set of 3 Tank Legs	5.68	5.00

RADIATOR VALVE



Item #	Description	Price 1	Price 2
43-286	1/8" MIP w/ Key	2.94	2.59
43-285	Valve Only - Coin Slotted	1.28	1.13
43-287	Key Only - Sold 10 per Only	.52¢	.46¢

WATER HEATER SAF-T-PAN

MADE OF HI-DENSITY POLYETHYLENE OR ALUMINUM



- Virtually indestructible
- Comes with 1" drain
- Will not rust or corrode
- Will withstand temperatures from - 40°F TO 250°F
- Eliminates water damage from leaking water heaters
- Can be hooked up to pass all codes

SOLD IN BOX QUANTITIES ONLY

Item #	Description	Box Qty	Price 1	Price 2
90-827	22" Aluminum Pan	6	20.36	17.92
90-822	24" Plastic Pan	3	10.08	8.87

CABLE TIE



SOLD 50 PER PACKAGE ONLY

Item #	Description	Price 1	Price 2
70-964	14" Black Cable Tie	.15¢	.13¢

COMBINATION HIGH LIMIT UPPER THERMOSTAT



- Energy efficient range settings
- Built in safety switch to prevent overheating
- All thermostats are adjustable

Item #	Description	Price 1	Price 2
44-342	Upper Thermostat	21.77	19.16

LOWER WATER HEATER THERMOSTAT



UL approved — one year warranty

Item #	Description	Price 1	Price 2
44-340	Lower Thermostat, Single Pole	11.11	9.78

COMBINATION HIGH LIMIT SINGLE ELEMENT THERMOSTAT



- For single element
- Energy efficient range settings
- Built in safety switch to prevent overheating
- All thermostats are adjustable

Item #	Description	Price 1	Price 2
44-343	Single Thermostat	19.50	17.16

Phone: 1-800-777-6500

Fax: 1-800-982-5934

Web: www.HodesCo.com



Price 1	Price 2
Order Less Than \$500	Order \$500 or More

HVAC



**CHEMICALS
COMPOUNDS, TOOLS
UTILITY & HVAC**

SPP SERIES PTC/CAPACITOR COMBINATION



(SPP5)
(SPP6)
(SPP7)

- Easy 2-wire installation
- 90 - 277 Voltage (VAC)
- Recommended Range (hp) 1/2 to 10
- Positive Temperature Coefficient Technology (PTC)
- Field proven Reliability - Most economic
- Operating Voltage Recommended Increase

Item #	Description	Price 1	Price 2
46-300	SPP5 300% Inc. in Torque	9.57	8.42
46-301	SPP6 500% Inc. in Torque	14.35	12.63
46-302	SPP7S 600% Inc. in Torque	26.32	23.16

RCO 3'N 1 SERIES REFRIGERATION HARD STARTS



(RCO810)
(RCO410)
(RCO210)
(SS410)

- For refrigeration systems without a run capacitor
- Reliable, field proven technology
- Pre-wired for easy installation
- 115 VAC

Item #	HP Rating	Price 1	Price 2
46-332	Relay, Start Capacitor 1/12 - 1/5	12.92	11.37
46-331	Relay, Start Capacitor 1/4 - 1/3	12.92	11.37
46-330	Relay, Start Capacitor 1/3 - 1/2	19.05	16.76
46-333	Potential Relay, Start Capacitor & Overload 1/4 - 1/3	25.84	22.74

HONOR THY PLUMBER™

DELAY ON MAKE TIMERS (DOM)



(TD68)
(TD69)
(TD69W)

*Cut the jumper to use in 120/240 volts.

**The 46-670 is not for use with a cooling anticipator

Item #	Delay Range Adjustable	Delay Range Fixed	Connections	Replaces	Price 1	Price 2
46-670**	6 sec to 8 min	n/a	(2) 1/4" male term.	AC-800-ADM1 / ICM105/ A-1 706 / Mars 32391	11.45	10.08
46-671*	6 sec to 8 min	n/a	(2) 1/4" male term.	AC-800-ADM1 / ICM102/ A-1 701 / Mars 32391	8.20	7.22

DELAY ON BREAK TIMERS (DOB)



(TD72)
(TD73)
(TD73W)

*Cut the jumper to use in 120/240 volts.

**The 46-677 is not for use with a cooling anticipator

Item #	Delay Range Adjustable	Delay Range Fixed	Connections	Replaces	Price 1	Price 2
46-677**	6 sec to 5 min	n/a	(2) 1/4" male term.	ASC500-ADB1 / ICM203 / Mars 32392 / A-1 EAC-501-ADJ	11.45	10.08
46-678*	6 sec to 5 min	n/a	(2) 1/4" male term.		8.20	7.22

MOTOR RUN CAPACITORS

- Non - PCB biodegradable synthetic oil
- Physical interrupter for safety
- Operating temperature -13°F to + 185°F (- 25°C to + 85°C)
- Microfarad uF tolerance +/- 5 %
- Hermetically sealed, drawn steel case construction
- Quad blade quick connect terminals
- Air conditioning and refrigeration compressors
- Furnace blower motors
- Air handler blower motors
- Condenser fan motors



Item #	(UF) Value	370 VAC	440 VAC	Single	Dual	Oval	Round	Price 1	Price 2
46-354	3	X		X		X		2.23	1.96
46-350	5	X		X		X		2.27	2.00
46-351	7	X		X		X		2.68	2.36
46-352	10	X		X		X		2.77	2.44
46-365	12.5	X		X		X		3.35	2.95
46-353	15	X		X		X		3.44	3.03
46-367	40	X		X		X		6.22	5.47
46-355	5		X	X		X		2.51	2.21
46-356	7.5		X	X		X		2.88	2.53
46-357	10		X	X		X		3.25	2.86
46-358	15		X	X		X		3.80	3.34
46-359	35		X	X			X	5.55	4.88
46-368	40		X	X		X		5.93	5.22
46-360	35 + 5	X			X	X		6.30	5.54
46-361	35 + 5		X		X	X		8.03	7.07
46-362	40 + 5		X		X	X		8.33	7.33
46-363	45 + 5		X		X	X		9.09	8.00
46-364	50 + 5		X		X		X	7.75	6.82
46-366	55 + 5	X			X	X		10.15	8.93

GENERAL PURPOSE FAN RELAYS



Engineering Data

- CONTACTS: SPST-NO, SPST-NC, SPDT, 1 NO/1 NC, Material/Power - Silver Alloy, Material 1/2 Pilot - Fine Silver
- POWER RATINGS (All Forms): 125 VAC; 18A Resistive, 12 FLA, 60 LRA, 240/277 VAC; 18A Resistive, 8 FLA, 48 LRA
- SPECIAL POWER RATINGS (Form 1 & 2): 125 VAC:14 FLA, 84 LRA, 277 VAC, 25A Resistive
- PILOT RATINGS (All Forms): 3A, 277 VAC Gen. Purpose, 250 VA @ 250 VAC, 277 VA @ 277 VAC, 125 VA @ 125 VAC
- COILS : Voltage Ratings - 24, 120, 208/240, 77 VAC, 12, 24 VDC Frequency - 50/60 Hz Pick-up Voltage - AC 85% of nominal, DC 75% of nominal, Power Ratings - AC DC, Inrush 5 VA 3VA, Sealed 3 VA 3 VA

Item #	Desc	Amps	Coil Voltage	Price 1	Price 2
46-630	SPST	4	24V	6.86	6.04
46-631	SPST	4	120V	7.64	6.72
46-632	SPST	4	240V	7.82	6.88
46-633	SPDT	1	24V	7.25	6.38
46-634	SPDT	1	120V	9.35	8.23
46-635	SPDT	1	240V	9.35	8.23
46-639	SPDT	12	24V	7.18	6.32
46-640	SPDT	12	120V	9.48	8.34
46-641	SPDT	12	240V	9.48	8.34
46-642	INO/INC	13	24V	7.36	6.48
46-643	INO/INC	13	120V	9.48	8.34
46-644	INO/INC	13	240V	9.76	8.59

Price 1	Price 2
Order Less Than \$500	Order \$500 or More

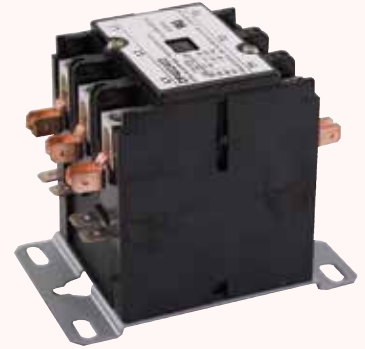
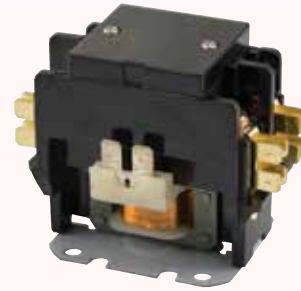


Phone: 1-800-777-6500
Fax: 1-800-982-5934
Web: www.HodesCo.com



Definite Purpose Contactors

- Designed to control air conditioning, refrigeration and resistance heating loads
- Ranges: 20 to 90 Full Load Amps (FLA)
- Poles: 1-1/2 to 3
- Coil Voltages: 24, 120 & 208/240
- Universal mounting base allows easy replacement of other manufacturers' devices
- Molded enclosed, replaceable coil structures
- Optional field installed auxiliary contacts available



20 - 40 FULL LOAD AMPS / 1.5 & 2 POLES FEATURES

- The coil and each power pole are supplied with two 1/4" quick connect terminals.
- Standard 20 - 30 FLA contactors feature hex screws with #2 Phillips / slotted heads.
- Standard 40 FLA contactors include box lugs.

Item #	Poles	Full Load Amps	Resistive Amps Per Pole	LRA Single Phase 50/60 Hz			Coil Voltage	Price 1	Price 2
				240/277V	480V	600V			
46-340	1.5	30	40	180	150	120	24/240	8.81	7.75
46-341	2	30	40	180	150	120	24	9.57	8.42
46-342	2	30	40	180	150	120	120	9.57	8.42
46-343	2	40	50	240	200	160	24	11.67	10.27

25 - 40 FULL LOAD AMPS / 3 POLE

- The coil and each power pole are supplied with two 1/4" quick connect terminals.
- Standard 25 and 30 FLA contactors feature hex screws with #2 Phillips / slotted heads and short covers.
- Standard 40 FLA contactors include box lugs and long covers.

Item #	Poles	Full Load Amps	Resistive Amps Per Pole	Three Phase 50/60 Hz			Single Phase 50/60 Hz		Coil Voltage	Price 1	Price 2
				240V HP / LRA	480V HP / LRA	600V HP / LRA	HP@20V	HP@20V			
46-344	3	30	40	10/180	15/150	15/120	2	5	24	18.18	16.00
46-345	3	30	40	10/180	15/150	15/120	2	5	120	18.18	16.00
46-346	3	30	40	10/180	15/150	15/120	2	5	208/240	20.48	18.02
46-347	3	40	50	10/240	20/200	20/160	3	7.5	24	20.48	18.02
46-348	3	40	50	10/240	20/200	20/160	3	7.5	208/240	20.48	18.02

CONTACTORS / RELAYS

**GENERAL PURPOSE SWITCHING RELAYS
DOUBLE POLE - DOUBLE THROW (DPDT)**

Applications

- HVAC/ R
- Appliance vending machines
- Fan controls
- Business machines



CONTACT RATING	Power 208/240V		Pilot 208/240V	
	120V	277V	120V	277V
Full Load Amps	12	6	-	-
Resistive Amps*	15	15	3	3
Locked Rotor Amps	60	35	-	-
Horsepower	3/4	3/4	1/10	1/10

*0.75 power factor

Item #	Coil Voltage	Terminal 1-2-3	Terminal 4-5-6	Exxex/RBM	Cross Reference Honeywell	Price 1	Price 2
46-636	24	power	power	90-340	R8222D1014	8.23	7.24
46-637	110/120	power	power	90-341	R4222D1013	8.81	7.75
46-638	208/240	power	power	90-342	R4222N1021	9.00	7.92

HVAC FLUSH MOUNT STAGING THERMOSTAT

(FL50)
(FL60)



Item #	Open	Close	Differential	Price 1	Price 2
46-875	50	35	15	5.26	4.63
46-876	60	45	15	7.56	6.65

IGNITERS



**CHEMICALS
COMPOUNDS, TOOLS
UTILITY & HVAC**

UNIVERSAL HOT SURFACE IGNITER

Don't Be Caught In The Cold. This unique furnace igniter offers two styles of brackets and is a replacement for Carrier, Lenox, Norton, Rheem, and others.

The small bracket replaces

- | | | |
|---|--|---|
| For Robert Shaw
41-402
41-405
40-408
40-410 | For Evcon
1474-051
1474-052
For Hupp
Industries
94851
9050 | For Roberts Gordon
90436600
For Superior
Fireplace
94851
For Trane
IGN23
IGN34
340039P01
B340039P01
B1446674P01 |
| For American Road
Equipment
201W | For Majestic
75-92-104
75-95-105 | For Viessman
9302-094 |
| For Armstrong Air
3832B001 | For Metzger
201N
201W | For Wynne Home
Equipment
62821-001
62821-002 |
| For Comfort Zone
150114-04-01 | For Mor-Flo
3200618 | For L.B. White Co.
120-07549 |
| For Claire Brothers
C-238
C-242 | For Nordyne
632-0700
632-0880
105141000 | For White Rodgers
767A-357
767A-361 |
| For Coleman
1474-051
1474-052 | For Norton
201D
201K
201L
201R
201W
271W
271P
271W | For Williamson
9050 |
| For Detroit Radiant
201D | For DMO Industries
20834 | For York International
025-27774-000
025-27776-000
025-29043-000
025-29050-000 |
| For Dornback
Furnace
271W | For Enerco Tech
10399 | |
| | For Rheem
62-22441-01 | |

The large bracket replaces

- | | | |
|---|--------------------------------|--|
| For Robert Shaw
41-403
41-407
41-409 | For Norton
201
271 | For Syder General
1380654
1380672
1380680 |
| For Carrier Corp.
LH33ZS001A
LH33ZS002 | For Raypak
600915 | For Trane
IGN26
IGN30 |
| For Ducane
20015201 | For Roberts Gordon
90434300 | B138196P01
B1446676P02 |
| | For H.B. Smith
50018 | For Weil McLain
511-330-139
511-330-193 |



Item #	Description	Price 1	Price 2
46-100	Hot Surface Igniter	30.52	26.86

DIRECT REPLACEMENT HOT SURFACE IGNITERS



- Strong design using more silicon carbide with deeper crystallization
- New slip fit kits, slide-in lock and go!
- Non-positional, double helix design - smoother ignition

Item #	Robertshaw Number	Price 1	Price 2
46-111	41-401	28.40	24.99
46-112	41-402	28.40	24.99
46-113	41-403	28.40	24.99
46-115	41-405	31.65	27.85
46-116	41-406	31.65	27.85
46-117	41-407	28.40	24.99
46-118	41-408	28.40	24.99
46-120	41-410	28.40	24.99
46-124	41-414	31.67	27.87

FLAT SILICON CARBIDE DIRECT REPLACEMENT FURNACE IGNITER



(IG401)

Item #	Robertshaw Number	Price 1	Price 2
46-001	41-401	21.43	18.86

FLAT SILICON CARBIDE DIRECT REPLACEMENT FURNACE IGNITER



(IG405)

Item #	Robertshaw Number	Price 1	Price 2
46-005	41-405	20.58	18.11

FLAT SILICON CARBIDE DIRECT REPLACEMENT FURNACE IGNITER



(IG407)

Item #	Robertshaw Number	Price 1	Price 2
46-007	41-407	20.09	17.68

FLAT SILICON CARBIDE DIRECT REPLACEMENT FURNACE IGNITER



(IG409)

Item #	Robertshaw Number	Price 1	Price 2
46-009	41-409	20.58	18.11

FLAT SILICON CARBIDE DIRECT REPLACEMENT FURNACE IGNITER



(IG410)

Item #	Robertshaw Number	Price 1	Price 2
46-010	41-410	21.53	18.95

FLAT SILICON CARBIDE DIRECT REPLACEMENT FURNACE IGNITER



(IG414)

Item #	Robertshaw Number	Price 1	Price 2
46-014	41-414	21.43	18.86

FLAT SILICON CARBIDE DIRECT REPLACEMENT FURNACE IGNITER



(IG404)

Item #	Robertshaw Number	Price 1	Price 2
46-004	41-404	20.09	17.68

FLAT SILICON CARBIDE DIRECT REPLACEMENT FURNACE IGNITER



(IG406)

Item #	Robertshaw Number	Price 1	Price 2
46-006	41-406	23.44	20.63

FLAT SILICON CARBIDE DIRECT REPLACEMENT FURNACE IGNITER



(IG408)

Item #	Robertshaw Number	Price 1	Price 2
46-008	41-408	20.58	18.11

FLAT SILICON CARBIDE DIRECT REPLACEMENT FURNACE IGNITER



(IG411)

Item #	Robertshaw Number	Price 1	Price 2
46-011	41-411	21.53	18.95

FLAT SILICON CARBIDE DIRECT REPLACEMENT FURNACE IGNITER



(IG412)

Item #	Robertshaw Number	Price 1	Price 2
46-012	41-412	21.53	18.95

**SIX MONTH
PRICE FREEZE**

Price 1	Price 2
Order Less Than \$500	Order \$500 or More



Phone: 1-800-777-6500
Fax: 1-800-982-5934
Web: www.HodesCo.com



MECHANICAL THERMOSTAT



- Heat/Cool
- For use with most 4- or 5-wire 24 VAC systems and single-stage heat pumps
- Adjustable heat anticipator
- Terminations: RC, RH, W, Y, G, O, B

Item #	Description	Price 1	Price 2
46-290	Horizontal Thermostat	25.84	22.74

MECHANICAL THERMOSTAT



- Heat/Cool
- For use with most 4- or 5-wire 24 VAC systems and single-stage heat pumps
- Adjustable heat anticipator
- Terminations: RC, RH, W, Y, G, O, B

Item #	Description	Price 1	Price 2
46-291	Vertical Thermostat	23.80	20.94

FOR SINGLE-STAGE HEAT PUMPS



- Electronic digital accuracy
- Large, easy-to-read LCD
- Filter change indicator
- No programming required
- No leveling required
- Terminations: RC/O, RH/B, Y, W, G, R
- Bimetal freeze protection

Item #	Description	Price 1	Price 2
46-293	Digital Thermostat	43.06	37.89

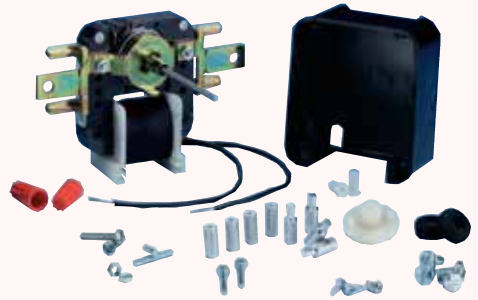
**5 DAY/2 DAY PROGRAMMING,
4 PERIODS PER DAY
FOR CONVENTIONAL
HEAT/COOL OR SINGLE-STAGE
HEAT PUMP SYSTEMS**



- Adjustable cycle rate
- Pre-programmed
- Easy "Front Load" battery access
- Filter Monitor
- Up-opening door
- Mechanical low temperature protection
- Two-stage low battery with fail safe protection
- Also Compatible with Most: Single-stage heat pumps
- Terminations: G, RC, RH, Y/O, WB, Y1

Item #	Description	Price 1	Price 2
46-294	5/2 Programmable Thermostat	44.98	39.58

UNIVERSAL EVAPORATOR FAN MOTOR KIT - 120 VAC



- 120 VAC, 3000 RPM, 1/200 HP
- .31 AMP impedance protected
- Prefastened multi fit, break-off mounting bracket
- Break off 2" motor shaft with breakaways at 1/2" and 1-1/2"
- Includes all mounting accessories and hardware
- Reversible rotation
- Single speed applications
- Replaces over 450 different evaporator type motors
- Direct replacement for the GEM 240 Series, Mars 90999 and Robertshaw 33-110, 33-112 & 33-114

Item #	Description	Price 1	Price 2
46-380	Universal Evaporator Fan Kit	19.05	16.76

FOOT MOUNT TRANSFORMERS



A COMPLETE LINE OF CONTROL TRANSFORMERS DESIGNED FOR HVAC/R APPLICATIONS.

- Foot or Multi-mount
- Output from 20 - 100 VA
- A multitude of Primary and Secondary combinations
- Circuit breakers and fuses where noted

Item #	Primary V	Secondary V	Output VA	Breaker/Fuse	Mount Type	Price 1	Price 2
46-460	120/208/240/480	240	100	Breaker	Foot	44.98	39.58
46-461	120/208/240	2.5/12/24	40	Fuse	Foot	15.02	13.22
46-463	120/208/240	24	40	No	Foot	12.44	10.95
46-464	120/208/240	2.5/12/24	40	Fuse	Multi	17.80	15.66
46-466	120/208/240	24	20	No	Foot	11.00	9.68
46-467	120/208/240	24	40	No	Foot	12.64	11.12
46-468	120/208/240	24	50	Fuse	Multi	23.55	20.72
46-470	120/208/240/480	24	75	Breaker	Foot	38.76	34.11



LEAK LOCK JOINT COMPOUND



- Brushable paste
- Joins all metals, plastics & other materials
- 1-1/3 oz tube

12 PER PACKAGE

Item #	Description	Price 1	Price 2
80-503	1-1/3 oz Leak Lock	5.74	5.05

UNIVERSAL FIN COMB



Item #	Description	Price 1	Price 2
91-956	Universal Fin Comb	10.31	9.07

HVAC