

RURAL DEVELOPMENT through DECENT WORK

FOR GROWTH, PRODUCTIVE JOBS, INCOME, FOOD SECURITY, GOOD WORKING CONDITIONS, EQUAL OPPORTUNITIES, RIGHTS, VOICE, SUSTAINABLE DEVELOPMENT, CRISIS RESILIENCE

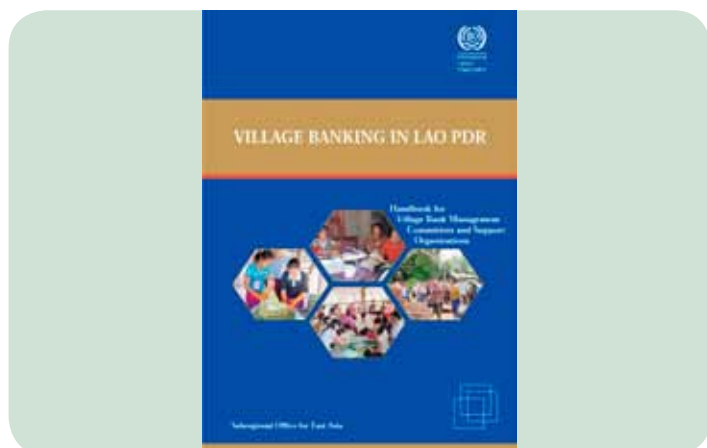


International Labour Office

Rural-Relevant Tools

Village Banking in Lao PDR

Themes



What are the Village Banking in Lao PDR Materials?

Practical tools for strengthening village banks as a means of giving poor women and men in rural and often remote areas access to financial services (savings and credit), social empowerment and a higher quality of life. The materials are based on the village bank methodology the ILO has implemented in Lao PDR in close collaboration with the Lao Community Sustainable Development Promotion Association. They are in use since 2008

The materials consist of a Handbook for Village Bank Management Committees and Support Organizations, and a Ledger guide

For whom?

- **Direct beneficiaries:** Village bank management committees, village bank associations and village bank support organizations
- **Ultimate beneficiaries:** Village dwellers

For what purpose?

- Helping village bank management committees improve the operations and sustainability of their village bank
- Assisting village bank support organizations or village bank associations in providing technical assistance to improve management capacity at the village level

How is it delivered?

- Support organizations use the materials for introducing village banking methodology in communities and training village bank development committees, as well as for providing technical assistance and auditing services to village banks



Photographs © ILO/Pheuphimm Champasith



- Village bank management committees can directly use the Handbook and the Ledger guide as guiding tools to ensure the successful management of their village banks

What are its components?

- The Handbook for Village Bank Management Committees and Support Organizations

Three parts:

- Part I explains what village banking is about, how it works and what principles help to ensure its success
- Part II addresses the operation of village banks and covers issues such as savings and loan policies, management, rules and regulations, gender equality, and accounting
- Part III focuses on the role of village bank support organizations or village bank associations and proposes financial sustainability strategies



- The Ledger Guide
 - Elaborates on how to keep good records of financial operations. It is used to show expenditure and income by type of item (e.g. membership fees, loans, or interest)

Which technical areas are covered?

- Social finance
- Gender equality

Can it cover more technical areas?

- Yes, the materials can be used as part of interventions addressing livelihoods improvement, elimination of child labour, prevention of labour migration and human trafficking, especially in rural and remote areas where communities do not have access to financial services

Where is it used?

In 1 country: Lao PDR (see map)

Which languages?

Available in 2 languages: English and Lao

Is it suitable for rural areas?

Yes

What are its strengths?

- Practical tools that provide detailed guidance on how to set up, manage, and ensure sustainability of village banks
- Can be used by village bank management committees as well as support organizations
- Promotes good practices in community-based microfinance



© ILO/P. Deloche

Is there a training course in ITC-Turin?

No

Where to find more information?

- Handbook for Village Bank Management Committees and Support Organizations:
http://www.ilo.org/asia/whatwedo/publications/lang--en/docName--WCMS_100502/index.htm
- Ledger guide:
http://www.ilo.org/wcmsp5/groups/public/---asia/---ro-bangkok/documents/publication/wcms_100503.pdf
- Regional Office for Asia and the Pacific:
<http://www.ilo.org/asia/lang--en/index.htm>
- Social Finance Programme:
<http://www.ilo.org/socialfinance>
- Women's Entrepreneurship Development Programme:
www.ilo.org/wed

Who to contact?

E-mail: sfp@ilo.org

Address: Social Finance Programme
International Labour Office
4 Route des Morillons
Genève 22 CH-1211
Switzerland



© ILO/Phepim Champasith



© ILO/Phepim Champasith