

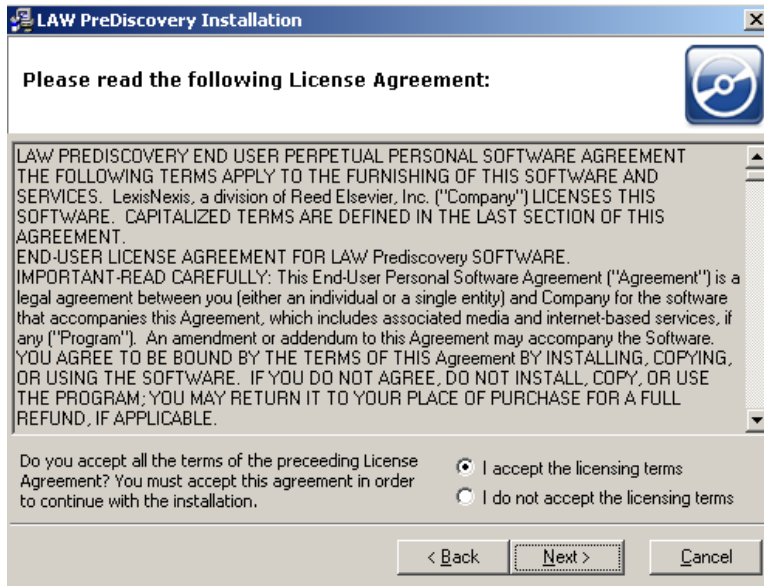
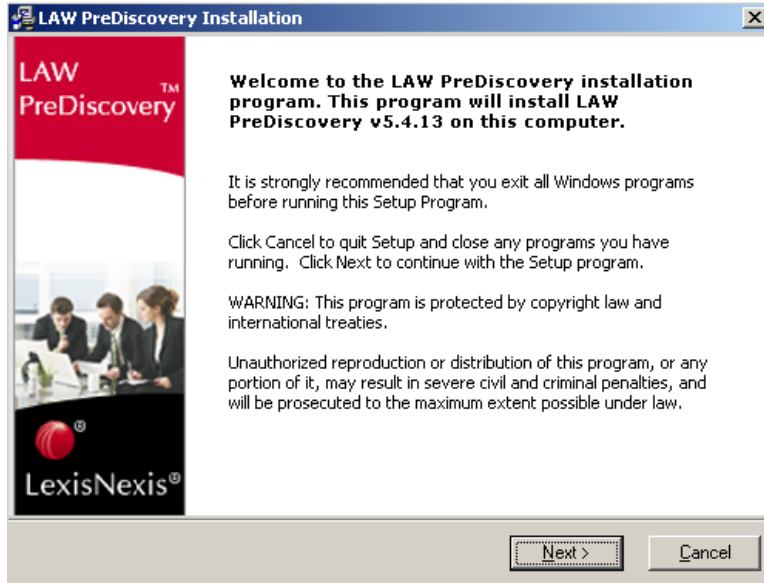
Temporary License Install

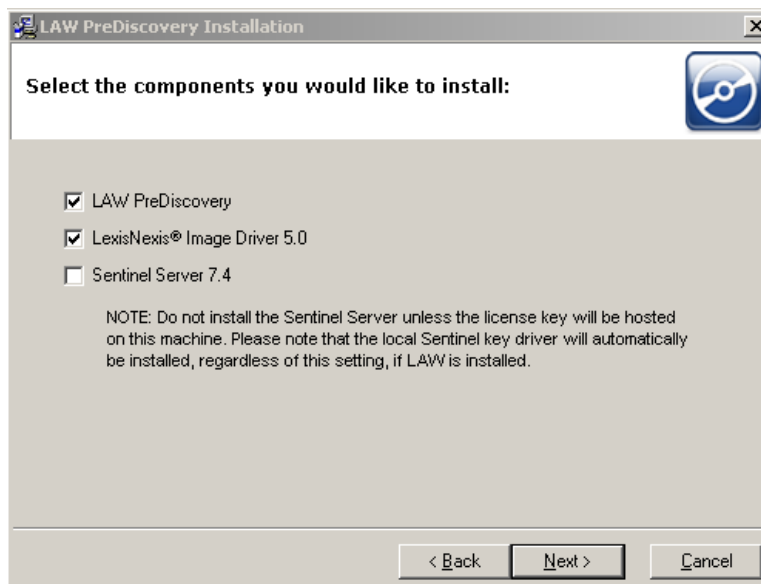
This install guide is helping those who are installing the software for the first time. You should have been provided an email with a link to download the software and a password to install it. Please download and save the install somewhere accessible. Once downloaded, run the installation and read below:



A password should have been provided on the same email as the link to download the software. If you do not have a password available, please contact lawsupport@lexisnexis.com and they will provide one for the installation. **The password should have been provided with same email in which your temporary license was sent on.**

NOTE: If “DEMO” is entered, LAW PreDiscovery will run in “demo mode” regardless if a LAW Server Dongle Key is provided. The reinstallation of LAW PreDiscovery must be done with the link provided and the correct password must be entered. **This also includes people who want to use the temporary license. If “DEMO” was entered, a reinstall is required.**





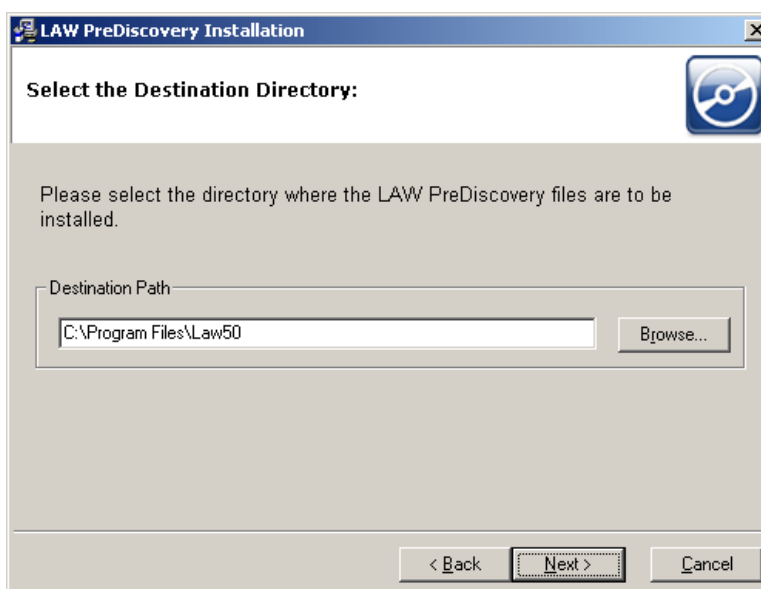
Components Descriptions listed below

[LAW PreDiscovery](#) = Main Application

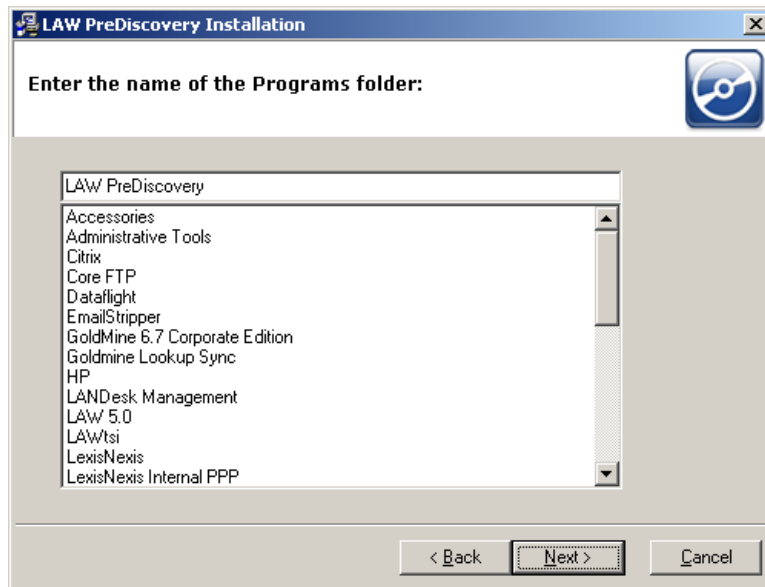
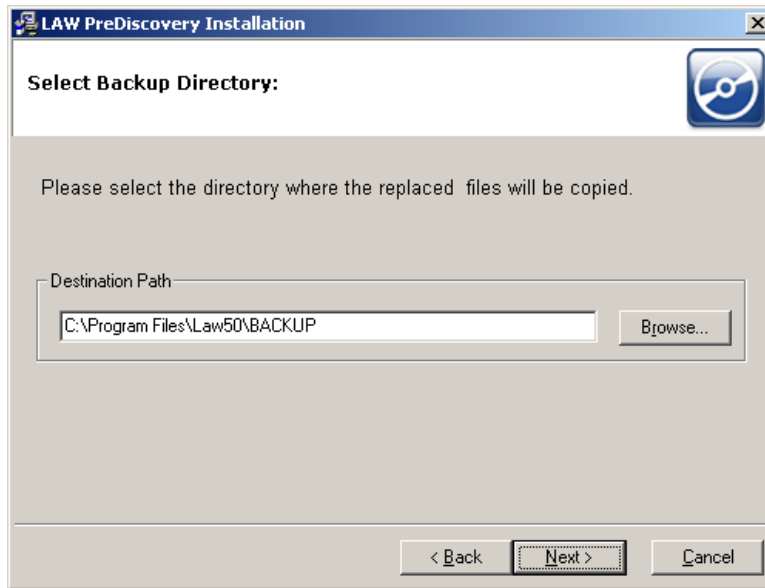
[LexisNexis® Image Driver 5.0](#) = Our Tiff printer to convert Electronic discovery to Tiff

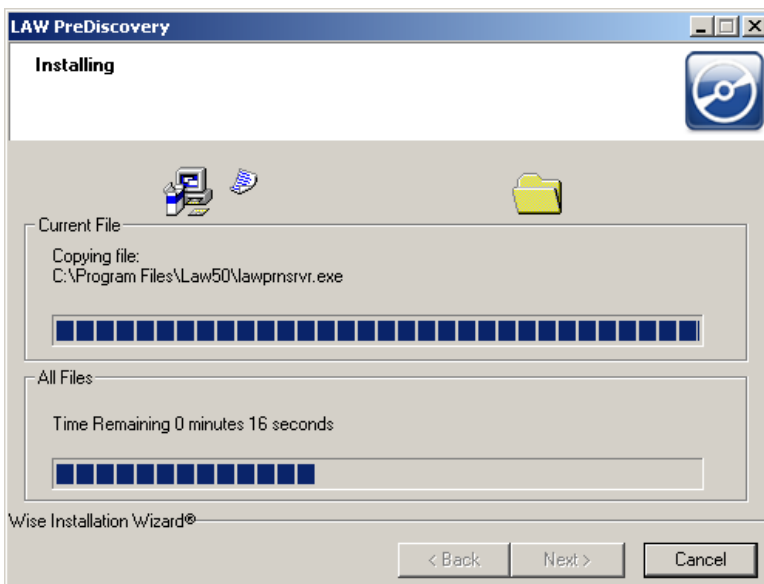
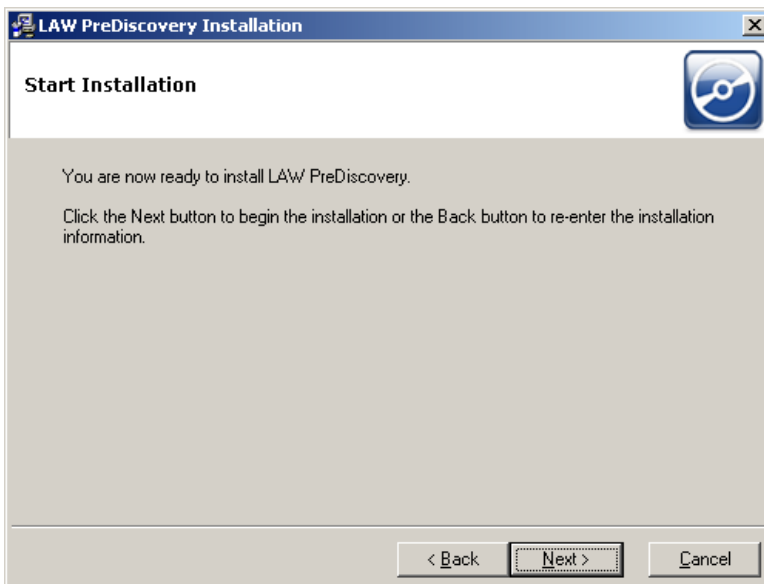
[Sentinel Server 7.4**](#) = For temporary license users, Sentinel Server isn't necessary to install since the internet is how the license will have to register software temporarily.

**Sentinel Server 7.4 is a program which monitors your hardware server dongle key. This program must be installed on the PC that will be hosting the hardware dongle. See the "NOTE:" disclaimer in the above screenshot. If you ever want to install the Sentinel Driver later, it can be done by rerunning this same installation with just the "Sentinel Server 7.4" checked only. Also, when running the installation for the Sentinel Driver, please allow it to configure the Windows Firewall so other PCs can see the PC that is hosting the LAW Server Dongle Key.

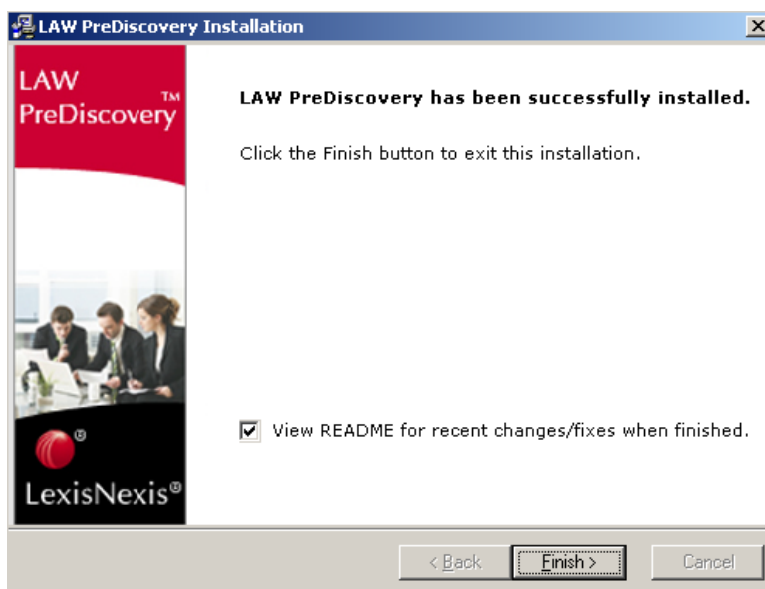
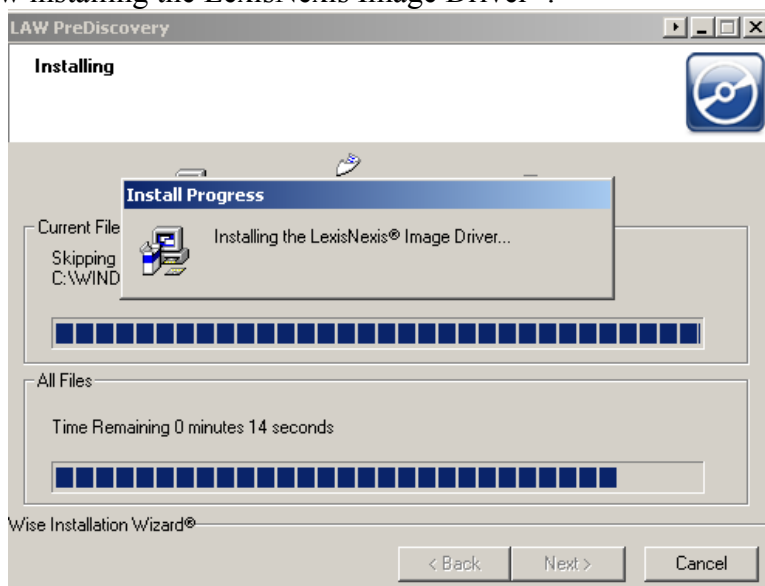


Please choose a destination path, by default it will install in the following directory listed above.
(C:\Program Files\Law50)



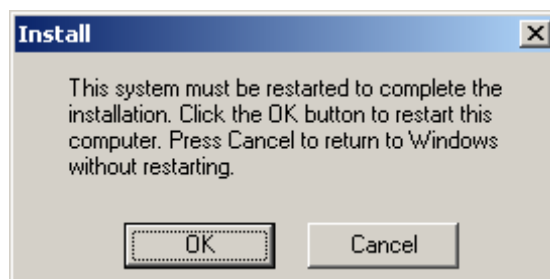


The installer is now installing the LexisNexis Image Driver®.



It is recommended that you view the README to find out all the New Features, Modifications and Bug Fixes that were included in the recently installed release.

Please reboot your PC if prompted to ensure LAW PreDiscovery completes the installation properly.

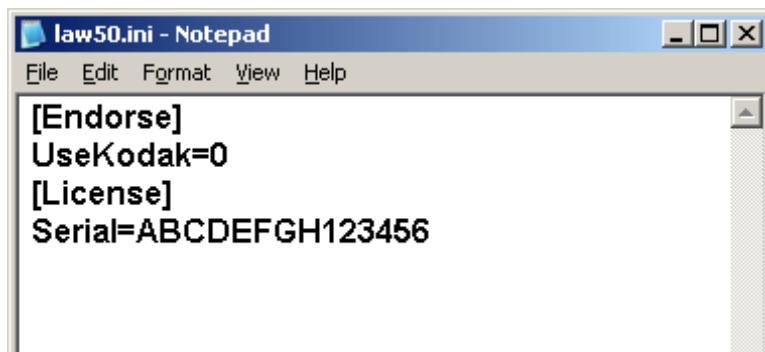


After the machine has been rebooted and the software installed, please reference the email that has provided the temporary license. The serial number provided should look something like this:

[License]
Serial=ABCDEFGH123456

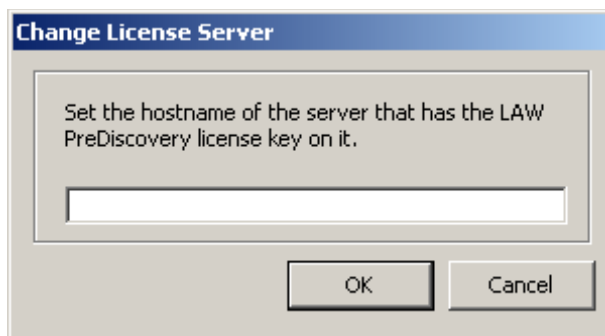
To activate a temporary full license, place the temporary license from the email you received in the law50.ini file in same folder as the LAW50.exe (C:\Program Files\Law50\ by default). If this file does not exist, create it with any text file editor (i.e. Notepad).

This screenshot below is how the serial number should be placed in the law50.ini file. Once the serial number is in there, save the file and exit it.



NOTE: You must include [License] within the law50.ini file or LAW PreDiscovery will not launch properly and give you full functionality as it has been designed.

After the PC has been rebooted, launch the LAW PreDiscovery icon. You will be prompted with the following box to 'Set the hostname of the server that has the LAW PreDiscovery license key on it'.



You should not enter anything in here as you do not have a license key; just hit Cancel. Please ensure you are connected to the internet when using the temporary license as LAW continuously checks the validity of the license. To verify all licenses are being used, click in the menu Help>About LAW>Licenses.

Feel free to contact lawsupport@lexisnexis.com in case this guide was not helpful.