



# Spare Parts Catalog

4 WG 190

Material number: 4657.024.026

Current date: 25.10.2018

ZF Friedrichshafen AG  
Hauptverwaltung  
80038 Friedrichshafen  
Deutschland

Telefon: +49 7541 77-0

Telefax: +49 7541 77-908000

[www.zf.com](http://www.zf.com)

zuständiges Werk:  
Passau

# Notes relating to the spare parts catalog

## Setup of the spare parts catalog

- Cover sheet
- Technical Cover (only in SDM print)
- Overview of figures
- Figure
- Associated parts list
- Next figure
- Associated parts list
- ...

## Figure and parts list



## Overview of figures

Bildtafel Figure	Sachnummer Product number	Benennung (Description)	Technische Info Technical info	Description (Benennung)	Menge Quantity	Einheit Unit
068.08.17	1316.170.001	AUSLEGER	WL	SHIFT TURRET	1	Stk
068.08.06	1316.170.031	DECKEL	WL*H-H *VM	COVER	1	Stk
068.08.14	1316.170.808	DECKEL	WL*AUSL+GEH*H-H*HF160N	COVER	1	Stk
08	1316.170.441	ANSCHLUSSTEILE	WL*NG-VORB*RG-SCHL*168N *BAJONETT	CONNECTING PARTS	1	Stk

The "gap" indicates that there is no separate graphics panel (poster) for this assembly  
The parts of this assembly are shown with the same mid-section number on the figure

### 1 Positions and subpositions

Pos.	Sachnummer Product number	Benennung (Description)	Technische Info Technical info	Description (Benennung)	Menge Quantity	Einheit Unit
0370	1315.201.054	RUECKLAUFBOLZEN	KPL.16S151*SG*L= 79	REV.IDLER SHAFT	1	Stk
/0120	0631.329.293	SPANNSTIFT		SLOT. PIN	1	Stk

Positions marked with "/" are the individual items of a completion  
For example: Position 0370 contains a centering pin with the position /0120

### 2 Combinations with standardized parts

Pos.	Sachnummer Product number	Benennung (Description)	Technische Info Technical info	Description (Benennung)	Menge Quantity	Einheit Unit
0630		VERSCHL.SCHR.		SCREW PLUG	1	Stk
	0636.302.067	VERSCHL.SCHR.		SCREW PLUG	1	Stk
	0634.801.249	DICHTRING	A 26 X 31	SEALING RING	1	Stk

The parts list shows the components included in the combination of standardized parts

### 3 Depiction of position/item number on the figure and in the parts list

01.620 - on the figure      01 relates to the assembly in which the position is included. Due to program-related reasons, it is shown on the figure.

0620 - in the parts list

Pos.	Sachnummer Product number	Benennung (Description)	Technische Info Technical info	Description (Benennung)	Menge Quantity	Einheit Unit
0620	0732.040.736	DRUCKFEDER		COMPRESSION SPRING	1	Stk

### 4 \*-Positions

Positions marked with an \* are optional i.e. inclusion in the parts list is not mandatory.  
The following note is shown on the figure

je nach Stücklistenausführung  
depending on spec. number  
\*  
suivant la nomenclature  
secondo la distinta base

### 5 Parts, dotted display

Parts with dotted display on the figure are only used for orientation of other parts

# Technical Cover

Page 1 from 6

Material number: 4657.024.026



4 WG 190 /

Pos.	Information	Amendment number
	CUSTOMER:CASE/USA	
	CUSTOMER:	
	IDENT-NR:196173A1	
	CUSTOMER NO.:	
	PROJEKT-NR.:33411	
	PROJECT-NO.:	
	VEHICLE DATA:	
	VEHICLE DATA:	
	RADLADER 721 C	
	VEHICLE TYPE:	
	FAHRZEUGMASSE: LEER: 13,73T	
	VEHICLE WEIGHT: EMPTY.....T0	
	MOTOR: CASE 6T-830	
	ENGINE/MAKE/TYPE:	
	ENGINE POWER: P=113 KW N N=2200 RPM	
	ENGINE POWER:	
	ENGINE PERFORM.ACC.TO TRACTIVE EFFORT CALCUL.	
	ENGINE PERFORM.ACC.TO TRACTIVE EFFORT CALCUL.	
	DREHMOMENT: T= 720 NM BEI N=1200 UPM	
	INPUT TORQUE:	
	TIRES: 20,5-R25	
	TIRES:	
	R.DYN. 0,658 M	
	ACHSUEBERSETZUNG:I A-GES.= 21,37	
	AXLE RATIO: I TOTAL=	
	MAX.SPEED: 35,0 KM/H	
	MAX.SPEED:	
	FAHRLEIST.BERECHNUNG: 4657 706 197	
	PERFORMACE CALCULATION:	
	PRODUCT DESCRIPTION:	
	PRODUCT DESCRIPTION	
	TYP: 4WG-190	
	BEVEL SIDE GEAR SPLINE: N 38X1,25	

# Technical Cover

Page 2 from 6

Material number: 4657.024.026



4 WG 190 /

Pos.	Information	Amendment number
	INSTALLATION: DIRECT MOUNTED	
	INSTALLATION: DIRECT MOUNTED	
	RATIOS TOTAL:	
	RATIOS:	
	FORWARD:	
	FORWARD:	
	1.G=3,745 2.G=2,089 3.G=1,072 4.G=0,666	
	REVERSE:	
	REVERSE:	
	1.G=3,551 2.G=1,981 3.G=1,017	
	INPUT:	
	INPUT:	
	DIRECT FLANGE ATTACHMENT	
	DIRECT MOUNTED SAE 3	
	OUTPUT:	
	OUTPUT:	
	FLANSCH: DANA SPICER 1550 WANDLERSEITIG	
	FLANGE: CONVERTER SIDE	
	FLANSCH: BREMSSEITIG DANA SPICER 1550	
	FLANGE: BRAKE SIDE	
	POWER TAKE-OFF(PTO): NO SHIFTABLE	
	P.T.O.: NOT SHIFTABLE	
	COAX.ENGINE DRIVEN:	
	COAX.ENGINE DRIVEN:	
	GEAR SELECTION: HSG 94	
	GEAR SELECTION:	
	MOUNTING POSIT.:REAR AT THE GEARBOX	
	MOUNTING POSIT.: REAR AT THE GEARBOX	
	VOLTAGE: 24 VOLT	
	VOLTAGE:	
	OPERATING PRES.: 16+2 BAR	
	OPERATING PRESSURE:	
	CONNECTION WIRING: SCREW CONNECTION	



Pos.	Information	Amendment number
	CONNECTION WIRING: SCREW CONNECTION	
	CONVERTER LOCK-UP CONTROL: WITHOUT	
	CONVERTER LOCK-UP CONTROL: WITHOUT	
	PR.DIFF.SWITCH: WITH	
	PR.DIFF.SWITCH: WITH	
	WARNING SWITCH F.OIL TEMPERATUR: WITH	
	WARNING SWITCH F.OIL TEMPERATUR:WITH	
	GEAR SELECTOR: SEPARATE ORDER	
	GEAR SELECTOR: SEPARATE ORDER	
	TYPE: DW 3	
	BEVEL SIDE GEAR SPLINE: N 38X1,25	
	WIRING: WITHOUT	
	WIRING: WITHOUT	
	INDUCTIVE SENSOR TURB.SPEED: Z=54	
	INDUCTIVE SENSOR TURB.SPEED	
	INDUCT.SENS.INTERMEDIATE GEAR TRAIN: Z=55	
	INDUCT.SENS.INTERMEDIATE GEAR TRAIN	
	INDUCTIVE SENSOR ENGINE-SPEED: Z= 4	
	INDUCTIVE SENSOR ENGINE-SPEED	
	SENSOR OUTPUT SPEED	
	SENSOR OUTPUT SPEED	
	PARKING BRAKE: WITH	
	PARKING BRAKE: WITH	
	DISC BRAKE:	
	DISC BRAKE	
	TYP/GROESSE: HYDR.BETAETIGT	
	TYPE/SIZE	
	SPEEDOMETER: WITHOUT	
	SPEEDOMETER: WITHOUT	
	OIL DIPSTICK: WITHOUT	
	OIL DIPSTICK: WITHOUT	
	AXLE DISCONNECT: NO	
	AXLE DISCONNECT: WITHOUT	



Pos.	Information	Amendment number
	ZF-FILTER: BOLTED ON	
	ZF-FILTER: BOLTED ON	
	T-CONVERTER:	
	TORQUE CONVERTER:	
	DESCRIPTION: 34 H 130	
	MARKING:	
	GRUNDKURVE: 118 380	
	CHARACTERISTICS:	
	ANFAHRWANDLUNG: 2,873	
	START.TORQUE RAT.:	
	STATOR FREEWHEEL:WITHOUT	
	STATOR FREEWHEEL:WITHOUT	
	BREAK FREEWHEEL: WITHOUT	
	BRAKE FREEWHEEL: WITHOUT	
	LOCK-UP CLUTCH: WITHOUT	
	TORQUE CONVERTER LOCK-UP: WITHOUT	
	GROUND DRIV.PUMP: WITHOUT	
	GROUND DRIV.PUMP: WITHOUT	
	DRAWINGS:	
	DRAWINGS:	
	SCHNITT: 4657 500 092( )	
	SECT.DRAWING:	
	SCHNITT: 4657 500 092(0)	
	SECT.DRAWING:	
	EINBAU: 4657 624 026(0)	
	INST.DRAWING:	
	MOTOR-ANBAU: 4657 500 015(1)	
	ENGINE CONN.:	
	GETR.SCHEMA: 4657 700 035( )	
	TRANSM.DIAGRAM:	
	OEL-SCHEMA: 4657 700 040( )	
	OIL-DIAGRAM:	
	WANDLER: 4168 034 060(2)	



Pos.	Information	Amendment number
	TORQUE CONVERTER:	
	CALCULATIONS:	
	CALCULATIONS:	
	ZUGKRAFT: .... .. ( )	
	TR.FORCE DIAGRAM:	
	ASSEMBLY-GUIDELINE: 4657 700 079	
	INSTALLATION SPECIFICATION:	
	DRAWING FOR ELECTR.PARTS	
	DRAWING FOR ELECTR.PARTS	
	FAHRSCHALTER:6006 630 023( )EBZ	
	RANGE SELECTOR:	
	STEUERUNG: 6009 665 001( )EBZ	
	CONTROL UNIT:	
	STROMLAUFPL.:6029 700 934(1)	
	WIRING DIAGRAM:	
	EST-PROGR.TEST-BENCH:	
	EST-PROGR.TEST-BENCH:	
	OIL CAPACITY:	
	OIL CAPACITY:	
	TOTAL: 27,00L	
	TOTAL: CA.29,00L	
	OIL FILLING: NO	
	OIL FILLING: NO	
	OIL GRADE:SPECIFICATION TE ML 03 / TRANSMISSION	
	OIL GRADE:SPECIFICATION TE ML 03 TRANSMISSION	
	GESAMT-TROCKENMASSE: 497KG	
	WEIGHT/MASS (DRY):	
	COLOUR: 5 BLACK RAL 9005	
	COLOR:	
	PACKING:	
	PACKING:	
	SEP.BEST.DER ELEKTR.TEILE: EST-37/DW3/VERKABELUNG	
	SEPARATE ORDER FOR ELECTR.PARTS	

# Technical Cover

Page 6 from 6

Material number: 4657.024.026



4 WG 190 /

Pos.	Information	Amendment number
	EST-37: SIEHE 0899 004 433	
	*	



# Assembly group overview

Page 1 from 2



4 WG 190 /

Material number: 4657.024.026

Graphics	Pos.	Material number	Name	Quantity	Amend. no.	Techn. Info.
465713003400	270	4657.130.034	ENGINE CONNECTION	1		
416603411300	500	4166.034.113	CONVERTER	1		
465710201200	30	4657.102.012	INPUT	1		
465712200500	220	4657.122.005	PRESSURE OIL PUMP	1		
465710104501	10	4657.101.045	TRANSMISSION HOUSING	1		
465710140800	20	4657.101.408	TRANSMISSION HOUSING	1		
465717102800	350	4657.171.028	COUPLING	1		
465717202900	360	4657.172.029	COUPLING	1		
465717301800	370	4657.173.018	COUPLING	1		
465717403900	380	4657.174.039	COUPLING	1		
465717501500	390	4657.175.015	COUPLING	1		
465717601800	400	4657.176.018	COUPLING	1		
465710300600	50	4657.103.006	OUTPUT	1		
465710340600	60	4657.103.406	OUTPUT	1		
465610901400	170	4656.109.014	PARKING BRAKE	1		
465710940400	70	4657.109.404	PARKING BRAKE	1		

# Assembly group overview

Page 2 from 2

Material number: 4657.024.026



4 WG 190 /

Graphics	Pos.	Material number	Name	Quantity	Amend. no.	Techn. Info.
465715400400	340	4657.154.004	POWER TAKE-OFF	1		
465710601200	110	4657.106.012	SHIFT SYSTEM	1		
465710640720	115	4657.106.407	SHIFT SYSTEM	1		
465615901921	120	4656.159.019	SHIFT SYSTEM	1		
465712300600	225	4657.123.006	CONTROL UNIT	1		
465712000300	190	4657.120.003	PRESSURE REGULATOR	1		
465613800600	330	4656.138.006	FILTER	1		
465712400200	240	4657.124.002	TEMPERATURE SENSOR	1		
465712500700	250	4657.125.007	INDUCTIVE SENSOR	1		
465613700400	310	4656.137.004	EMERGENCY STEERING PUMP	1		
465713100650	290	4657.131.006	FILLER NOZZLE	2		
465729800900	KIT	4657.298.009	SEAL KIT	1		

# Plant

Page 1 from 1

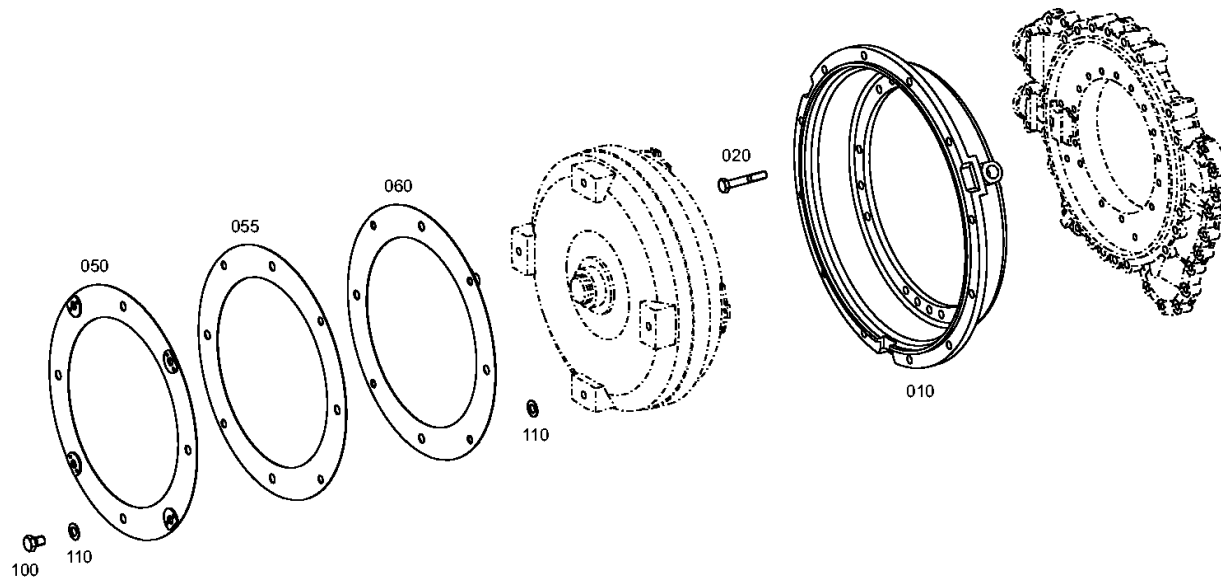
Material number: 4657.024.026

Plant: 465713003400

Material-assembly-group-no: 4657.130.034



4 WG 190 /  
ENGINE CONNECTION



# Parts list

Page 1 from 1

Material number: 4657.024.026

Plant: 465713003400

Material-assembly-group-no: 4657.130.034



4 WG 190 /

	Pos.	Material number	Customer material	Name	Quantity	ME	Amend. no.	Techn. Info.	Rep kit	Alternative material
	10	4656.330.008		CONVERTER BELL	1			SAE-3 Laenge 77.7		
	20	0636.100.713		HEXAGON SCREW	18			M10X65		
	50	4657.230.014		DIAPHRAGM	1					
	55	4657.330.011		DIAPHRAGM	1					
	60	4657.230.002		DIAPHRAGM	1					
	100	0636.102.411		HEXAGON SCREW	4			M12X18		
	110	0730.105.318		THRUST WASHER	8			A=1,00 IN 0730 105 317(3)		

# Plant

Page 1 from 1

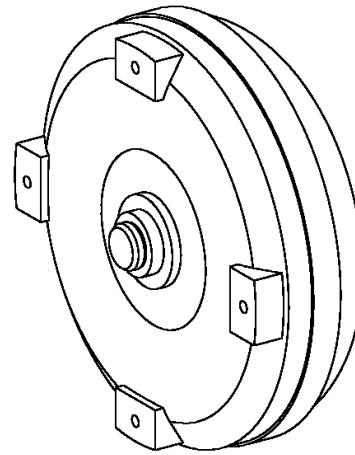
Material number: 4657.024.026

Plant: 416603411300

Material-assembly-group-no: 4166.034.113



4 WG 190 /  
CONVERTER



010

# Parts list

Page 1 from 1

Material number: 4657.024.026

Plant: 416603411300

Material-assembly-group-no: 4166.034.113



4 WG 190 /

	Pos.	Material number	Customer material	Name	Quantity	ME	Amend. no.	Techn. Info.	Rep kit	Alternative material
	10	4168.034.111		CONVERTER	1			W340 ohne WK		

# Plant

Page 1 from 1

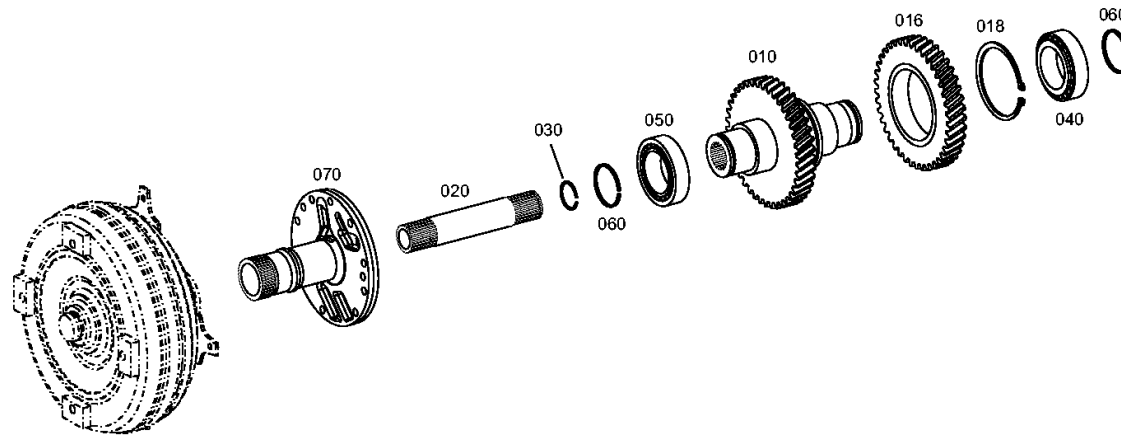
Material number: 4657.024.026

Plant: 465710201200

Material-assembly-group-no: 4657.102.012



4 WG 190 /  
INPUT



# Parts list

Page 1 from 1

Material number: 4657.024.026

Plant: 465710201200

Material-assembly-group-no: 4657.102.012



4 WG 190 /

	Pos.	Material number	Customer material	Name	Quantity	ME	Amend. no.	Techn. Info.	Rep kit	Alternative material
🛒	10	4657.302.005		INPUT SHAFT	1			Z=54*Z=30		
🛒	16	4657.302.007		INPUT GEAR	1			Z=54		
🛒	18	0630.501.056		RETAINING RING	1			100X3		
🛒	20	4656.302.010		TURBINE SHAFT	1					
🛒	30	0630.513.099		SNAP RING	1					
🛒	40	0735.300.549		TAPERED ROLLER BEARING	1			60,000X95,000X27,000		
🛒	50	0735.300.549		TAPERED ROLLER BEARING	1			60,000X95,000X27,000		
🛒	60	0634.402.557		R-RING	2			60X3		
🛒	70	4656.302.027		STATOR SHAFT	1			Z=46		



# Plant

Page 1 from 1

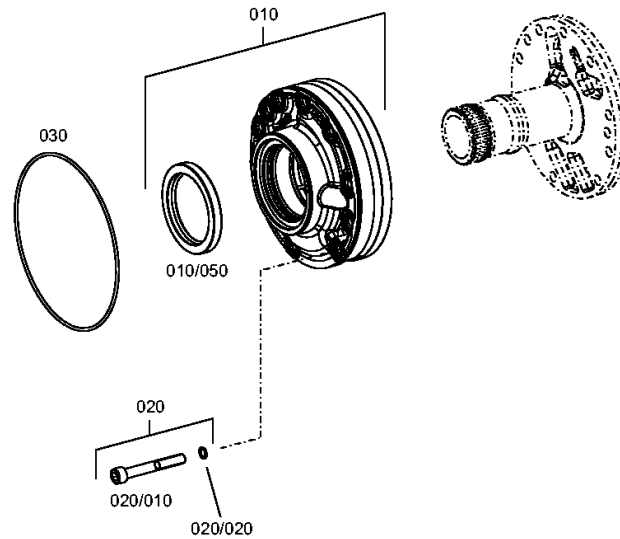
Material number: 4657.024.026

Plant: 465712200500

Material-assembly-group-no: 4657.122.005



4 WG 190 /  
PRESSURE OIL PUMP



# Parts list

Page 1 from 1

Material number: 4657.024.026

Plant: 465712200500

Material-assembly-group-no: 4657.122.005



4 WG 190 /

	Pos.	Material number	Customer material	Name	Quantity	ME	Amend. no.	Techn. Info.	Rep kit	Alternative material
	10	0501.214.895		GEAR PUMP	1					
	/50	0634.311.837		SHAFT SEAL	1			75X95X10		
	20	4475.280.205		CAP SCREW	10					
	/20	0634.313.215		O-RING	1			9,5X1,6		
	30	0634.313.999		O-RING	1		K01165/0610	182X3		

# Plant

Page 1 from 2

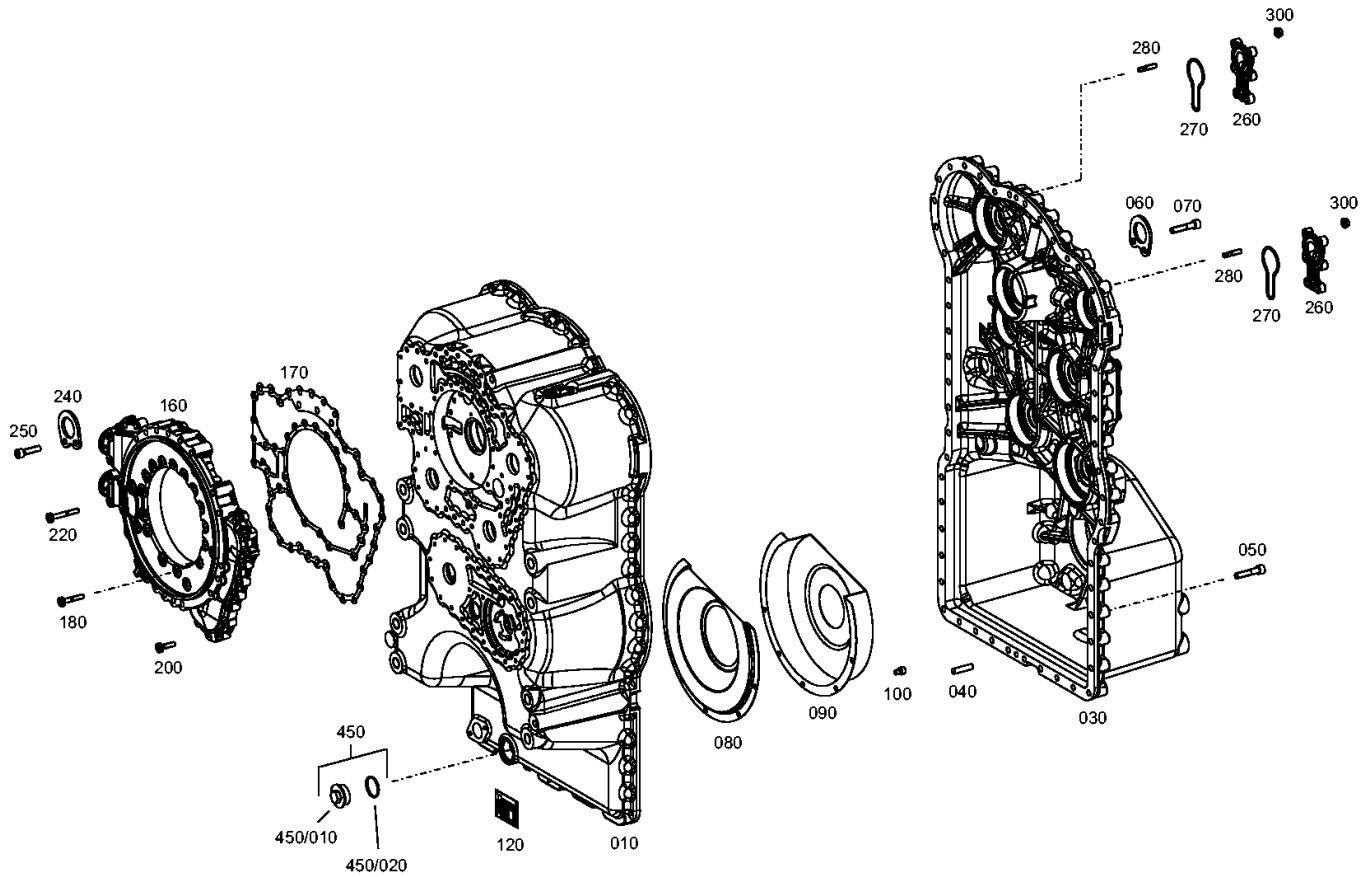
Material number: 4657.024.026

Plant: 465710104501

Material-assembly-group-no: 4657.101.045



4 WG 190 /  
TRANSMISSION HOUSING



# Plant

Page 2 from 2

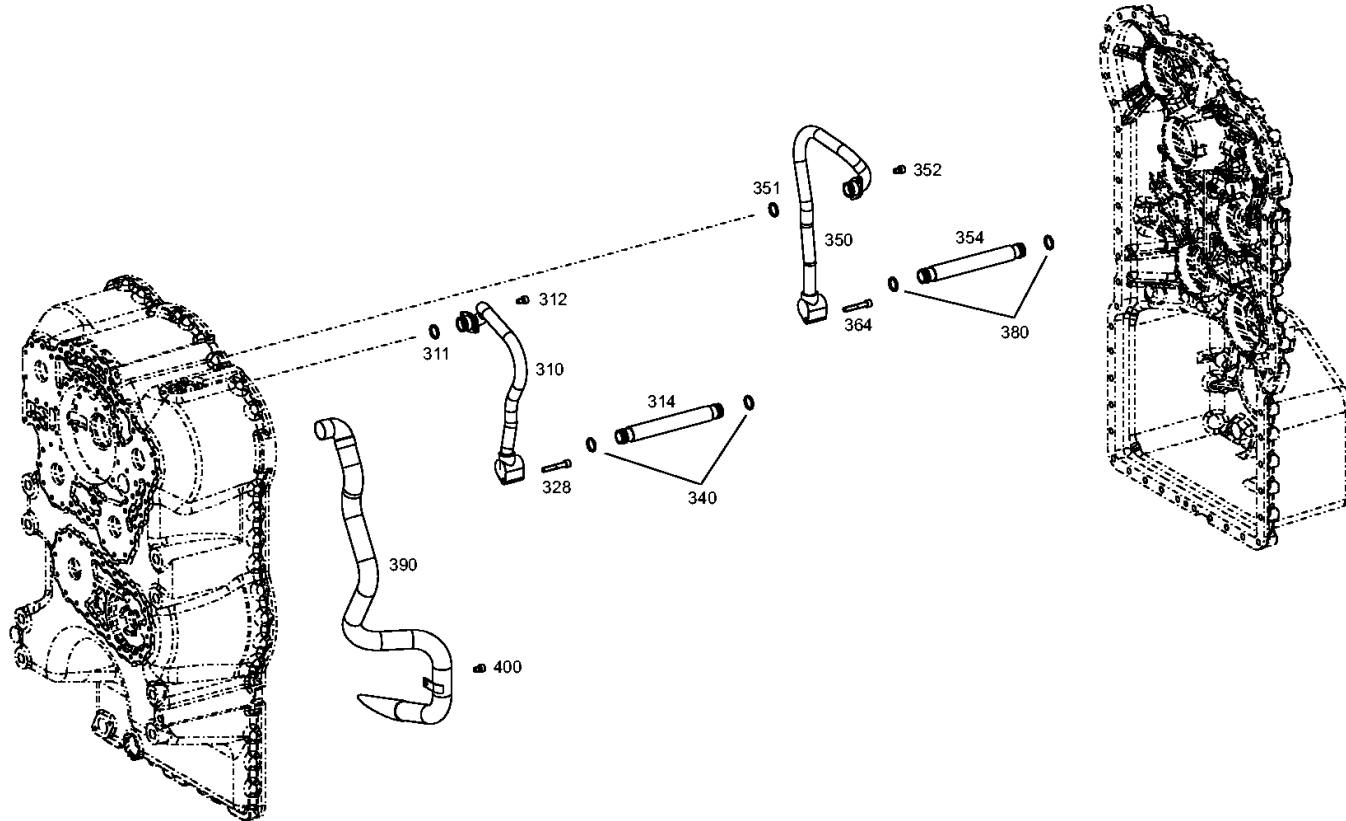
Material number: 4657.024.026

Plant: 465710104502

Material-assembly-group-no: 4657.101.045



4 WG 190 /  
TRANSMISSION HOUSING



# Parts list

Page 1 from 2



4 WG 190 /

Material number: 4657.024.026

Plant: 465710104501

Material-assembly-group-no: 4657.101.045

	Pos.	Material number	Customer material	Name	Quantity	ME	Amend. no.	Techn. Info.	Rep kit	Alternative material
	10	4657.201.027		HOUS.FRONT SECT	1		K01226/0210			
	30	4657.201.020		HOUSING REAR PART	1					
	40	0631.306.792		CYLINDRICAL PIN	2			10X40		
	50	0636.100.801		CAP SCREW	51			M10X50		
	60	4656.301.148		FIXING PLATE	1			h=6,000		
	70	0636.100.801		CAP SCREW	2			M10X50		
	80	4657.301.032		SCREEN SHEET	1					
	90	4657.301.033		SCREEN SHEET	1					
	100	0636.100.803		CAP SCREW	5			M8X12		
	120	0730.365.279		TYPE PLATE	1		Z00031665210	ZF-Standard/Passau		
	160	4656.301.047		OIL FEED.HOUSG.	1		K00997/0510			
	170	4656.301.023		GASKET	1					
	180	0736.300.182		TORX SCREW	21			M8X45		
	200	0736.300.233		TORX SCREW	15			M8X30		
	220	0736.300.183		TORX SCREW	4			M8X60		
	240	4656.301.148		FIXING PLATE	1			h=6,000		
	250	0636.100.816		CAP SCREW	2			M10X40		
	260	4657.301.003		COVER	2					
	270	0634.313.778		O-RING	2			76X3		
	280	0636.102.496		STUD	12			M8X25		
	300	0637.100.139		HEXAGON NUT	12			M8		
	310	4657.201.144		OIL TUBE	1			22,000X2,000		
	311	0634.306.213		O-RING	1		K01155/0610	22X3		
	312	0636.100.803		CAP SCREW	2			M8X12		
	314	4657.301.044		OIL TUBE	1					
	328	0636.115.295		CAP SCREW	1			M8X50		
	340	0634.306.213		O-RING	2		K01155/0610	22X3		
	350	4657.201.145		OIL TUBE	1			22,000X2,000		
	351	0634.306.213		O-RING	1		K01155/0610	22X3		
	352	0636.100.803		CAP SCREW	2			M8X12		
	354	4657.301.044		OIL TUBE	1					
	364	0636.115.295		CAP SCREW	1			M8X50		
	380	0634.306.213		O-RING	2		K01155/0610	22X3		
	390	4657.201.143		SUCTION TUBE	1			35,000X2,000		

# Parts list

Page 2 from 2

Material number: 4657.024.026

Plant: 465710104501

Material-assembly-group-no: 4657.101.045



4 WG 190 /

	Pos.	Material number	Customer material	Name	Quantity	ME	Amend. no.	Techn. Info.	Rep kit	Alternative material
	400	0636.100.803		CAP SCREW	1			M8X12		
	450	4475.280.216		SCREW PLUG	1					
	/20	0634.314.304		O-RING	1			35X2		

# Plant

Page 1 from 1

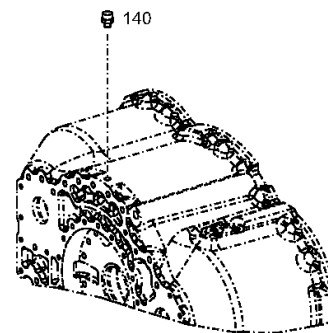
Material number: 4657.024.026

Plant: 465710140800

Material-assembly-group-no: 4657.101.408



4 WG 190 /  
TRANSMISSION HOUSING



# Parts list

Page 1 from 1

Material number: 4657.024.026

Plant: 465710140800

Material-assembly-group-no: 4657.101.408



4 WG 190 /

	Pos.	Material number	Customer material	Name	Quantity	ME	Amend. no.	Techn. Info.	Rep kit	Alternative material
🛒	140	0750.131.027		BREATHER	1					



# Plant

Page 1 from 1

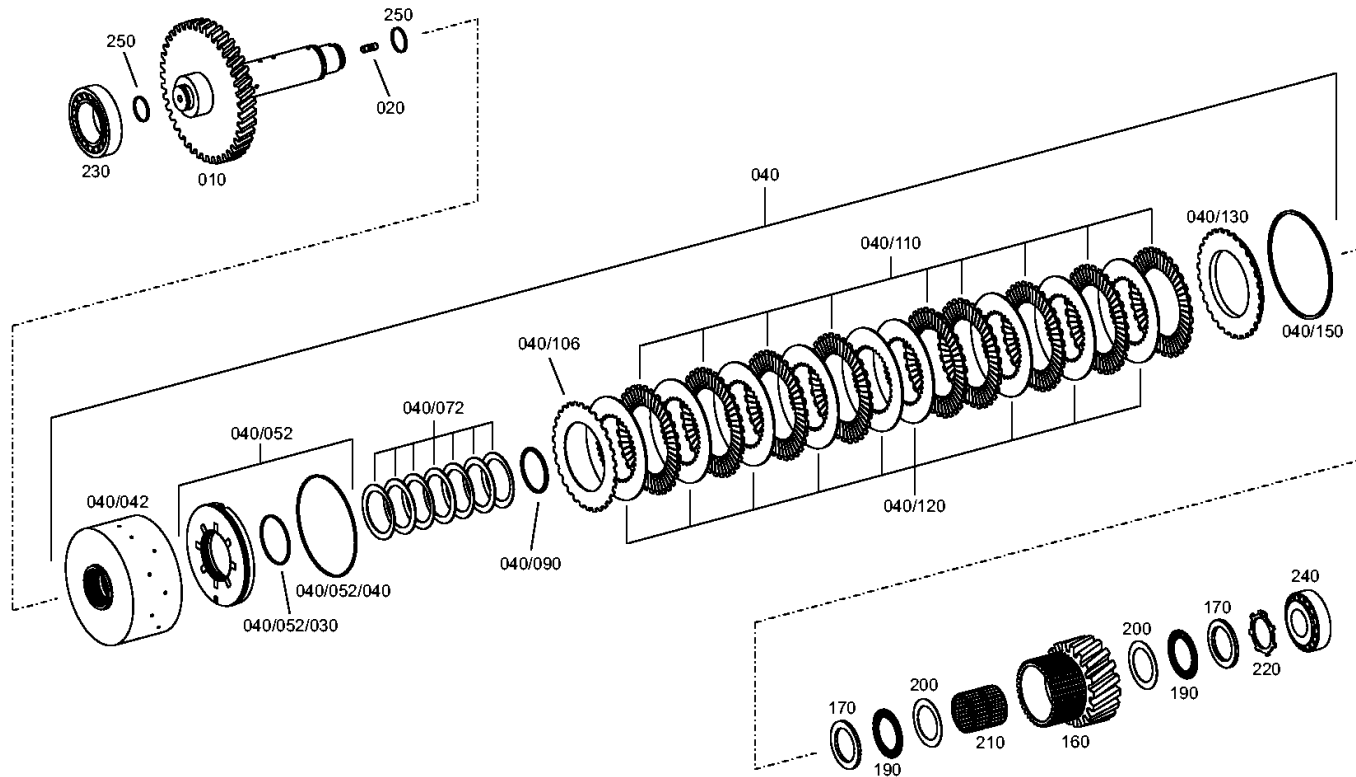
Material number: 4657.024.026

Plant: 465717102800

Material-assembly-group-no: 4657.171.028



4 WG 190 /  
COUPLING



# Parts list

Page 1 from 2



4 WG 190 /

Material number: 4657.024.026

Plant: 465717102800

Material-assembly-group-no: 4657.171.028

	Pos.	Material number	Customer material	Name	Quantity	ME	Amend. no.	Techn. Info.	Rep kit	Alternative material
	10	4657.371.041		SHAFT	1		Z00009825310	Z=51		
	20	0636.607.039		STUD	1			M10X16		
	40	4657.271.010		COUPLING	1					
	/106	0501.212.371		FRICTION DISC	1					
	/110	0501.212.370		DISC	9					
	/120	0501.316.592		INNER CLUTCH DISK	9					
	/130	4657.371.045		END SHIM	1			Z=34		
	/150	---		SNAP RING	1					
	---	0730.513.702		SNAP RING	1			h=2,25		
	---	0730.513.703		SNAP RING	1			h=2,4		
	---	0730.513.704		SNAP RING	1			h=2,55		
	---	0730.513.705		SNAP RING	1			h=2,7		
	---	0730.513.706		SNAP RING	1			h=2,85		
	---	0730.513.707		SNAP RING	1			h=3,0		
	---	0730.513.708		SNAP RING	1			h=3,15		
	---	0730.513.709		SNAP RING	1			h=3,30		
	---	0730.513.710		SNAP RING	1			h=3,45		
	---	0730.513.711		SNAP RING	1			h=3,60		
	---	0730.513.712		SNAP RING	1			h=3,75		
	---	0730.513.713		SNAP RING	1			h=3,90		
	---	0730.513.714		SNAP RING	1			h=4,05		
	---	0730.513.715		SNAP RING	1			h=4,20		
	/42	4657.371.034		DISC CARRIER	1			Z=34*Z=46		
	/52	4657.271.008		PISTON	1			KPL. KR/KV/K2/K3/K4		
	//30	0634.313.643		O-RING	1			75X3		
	//40	0634.313.796		O-RING	1			158X3		
	/72	0501.316.541		CUP SPRING	7			68,500X89,000X1,400		
	/90	0501.324.228		L-RING	1					
	160	4657.371.021		IDLER	1			Z=23		
	170	0635.290.114		RUNNING DISK	2			55X78X5		
	190	0735.368.076		AXIAL NEEDLE CAGE	2			55,0X78,0X3,0		
	200	0501.334.358		AXIAL WASHER	2		Z00034899510	55,000X78,000X1,000		
	210	0735.321.509		NEEDLE CAGE	1			55,000X63,000X64,000		
	220	0501.316.378		RETAINING RING	1					

# Parts list

Page 2 from 2

Material number: 4657.024.026

Plant: 465717102800

Material-assembly-group-no: 4657.171.028



4 WG 190 /

	Pos.	Material number	Customer material	Name	Quantity	ME	Amend. no.	Techn. Info.	Rep kit	Alternative material
	230	0735.300.547		TAPERED ROLLER BEARING	1			66,675X112,712X30,162		
	240	0735.300.548		TAPERED ROLLER BEARING	1			44,450X95,250X28,575		
	250	0734.401.267		PISTON RING	2			40,000X2,500		

# Plant

Page 1 from 1

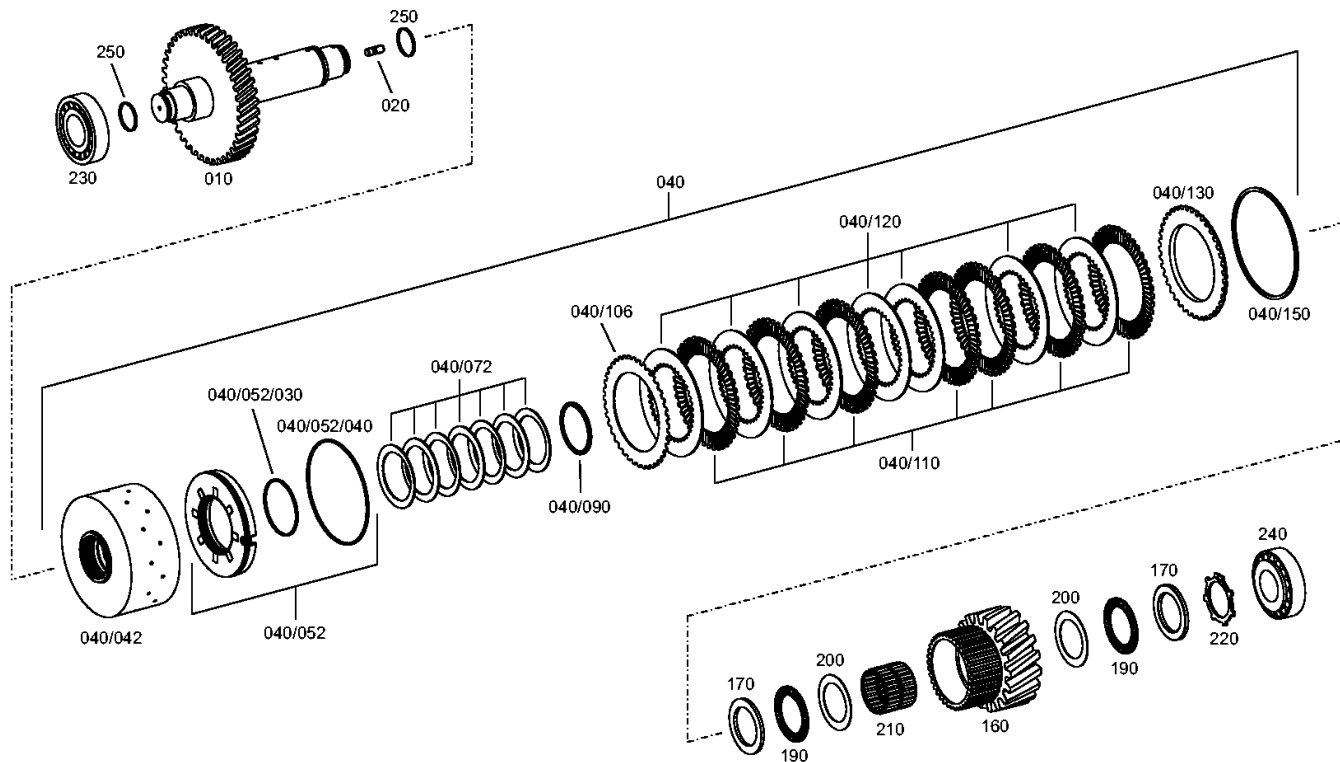
Material number: 4657.024.026

Plant: 465717202900

Material-assembly-group-no: 4657.172.029



4 WG 190 /  
COUPLING



# Parts list

Page 1 from 2



4 WG 190 /

Material number: 4657.024.026

Plant: 465717202900

Material-assembly-group-no: 4657.172.029

	Pos.	Material number	Customer material	Name	Quantity	ME	Amend. no.	Techn. Info.	Rep kit	Alternative material
	10	4657.372.022		SHAFT	1		Z00010882110	Z=56		
	20	0636.607.039		STUD	1			M10X16		
	40	4657.272.006		COUPLING	1					
	/106	0501.212.373		OUTER CLUTCH DISK	1					
	/110	0501.212.372		DISC	7			h=2,5		
	/120	0501.316.591		INNER CLUTCH DISK	7					
	/130	0501.316.594		END SHIM	1					
	/150	---		SNAP RING	1					
	---	0730.513.684		SNAP RING	1			h=2,10		
	---	0730.513.685		SNAP RING	1			h=2,25		
	---	0730.513.686		SNAP RING	1			h=2,40		
	---	0730.513.687		SNAP RING	1			h=2,55		
	---	0730.513.688		SNAP RING	1			h=2,70		
	---	0730.513.698		SNAP RING	1			h=2,85		
	---	0730.513.689		SNAP RING	1			h=3,00		
	---	0730.513.690		SNAP RING	1			h=3,15		
	---	0730.513.691		SNAP RING	1			h=3,30		
	---	0730.513.692		SNAP RING	1			h=3,45		
	---	0730.513.693		SNAP RING	1			h=3,60		
	---	0730.513.694		SNAP RING	1			h=3,75		
	---	0730.513.695		SNAP RING	1			h=3,90		
	---	0730.513.696		SNAP RING	1			h=4,05		
	---	0730.513.697		SNAP RING	1			h=4,20		
	/42	4657.372.020		DISC CARRIER	1			Z=44*Z=46		
	/52	4657.275.006		PISTON	1			KPL.		
	//30	0634.313.643		O-RING	1			75X3		
	//40	0634.313.719		O-RING	1			142X3		
	/72	0501.316.541		CUP SPRING	7			68,500X89,000X1,400		
	/90	0501.324.228		L-RING	1					
	160	4657.372.011		IDLER	1			Z=23		
	170	0635.290.114		RUNNING DISK	2			55X78X5		
	190	0735.368.076		AXIAL NEEDLE CAGE	2			55,0X78,0X3,0		
	200	0501.334.358		AXIAL WASHER	2		Z00034899510	55,000X78,000X1,000		
	210	0735.321.508		NEEDLE CAGE	1			K 55,0X63,0X50,0		

# Parts list

Page 2 from 2

Material number: 4657.024.026

Plant: 465717202900

Material-assembly-group-no: 4657.172.029



4 WG 190 /

	Pos.	Material number	Customer material	Name	Quantity	ME	Amend. no.	Techn. Info.	Rep kit	Alternative material
🛒	220	0501.316.378		RETAINING RING	1					
🛒	230	0735.300.548		TAPERED ROLLER BEARING	1			44,450X95,250X28,575		
🛒	240	0735.300.548		TAPERED ROLLER BEARING	1			44,450X95,250X28,575		
🛒	250	0734.401.267		PISTON RING	2			40,000X2,500		

# Plant

Page 1 from 1

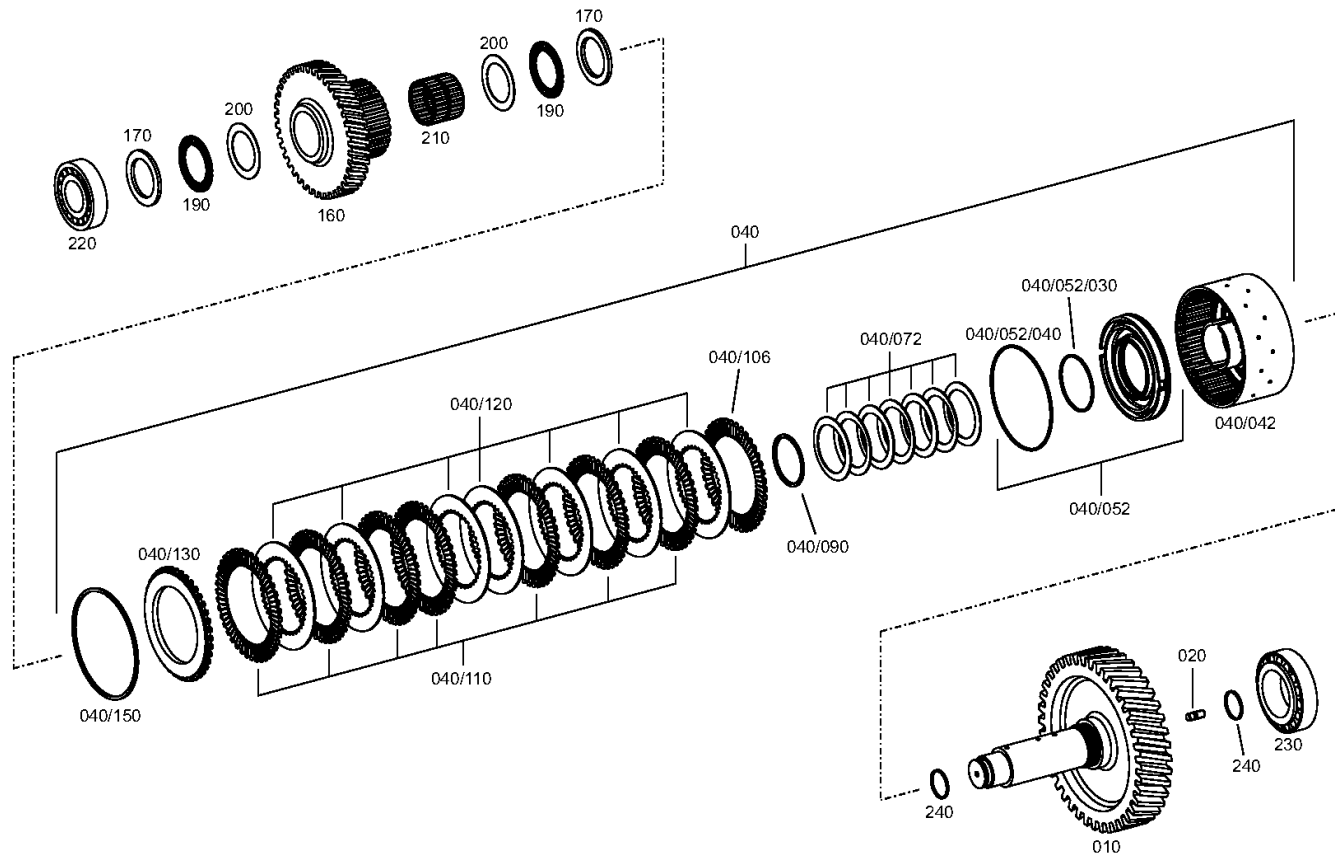
Material number: 4657.024.026

Plant: 465717301800

Material-assembly-group-no: 4657.173.018



4 WG 190 /  
COUPLING



# Parts list

Page 1 from 2



4 WG 190 /

Material number: 4657.024.026

Plant: 465717301800

Material-assembly-group-no: 4657.173.018

	Pos.	Material number	Customer material	Name	Quantity	ME	Amend. no.	Techn. Info.	Rep kit	Alternative material
	10	4657.373.018		SHAFT	1		Z00009825310	Z=46*Z=44		
	20	0636.607.039		STUD	1			M10X16		
	40	4657.273.007		COUPLING	1					
	/106	0501.212.373		OUTER CLUTCH DISK	1					
	/110	0501.212.372		DISC	7			h=2,5		
	/120	0501.316.591		INNER CLUTCH DISK	7					
	/130	0501.316.594		END SHIM	1					
	/150	---		SNAP RING	1					
	---	0730.513.684		SNAP RING	1			h=2,10		
	---	0730.513.685		SNAP RING	1			h=2,25		
	---	0730.513.686		SNAP RING	1			h=2,40		
	---	0730.513.687		SNAP RING	1			h=2,55		
	---	0730.513.688		SNAP RING	1			h=2,70		
	---	0730.513.698		SNAP RING	1			h=2,85		
	---	0730.513.689		SNAP RING	1			h=3,00		
	---	0730.513.690		SNAP RING	1			h=3,15		
	---	0730.513.691		SNAP RING	1			h=3,30		
	---	0730.513.692		SNAP RING	1			h=3,45		
	---	0730.513.693		SNAP RING	1			h=3,60		
	---	0730.513.694		SNAP RING	1			h=3,75		
	---	0730.513.695		SNAP RING	1			h=3,90		
	---	0730.513.696		SNAP RING	1			h=4,05		
	---	0730.513.697		SNAP RING	1			h=4,20		
	/42	4657.372.020		DISC CARRIER	1			Z=44*Z=46		
	/52	4657.275.006		PISTON	1			KPL.		
	//30	0634.313.643		O-RING	1			75X3		
	//40	0634.313.719		O-RING	1			142X3		
	/72	0501.316.541		CUP SPRING	7			68,500X89,000X1,400		
	/90	0501.324.228		L-RING	1					
	160	4657.373.004		IDLER	1			Z=55		
	170	0635.290.114		RUNNING DISK	2			55X78X5		
	190	0735.368.076		AXIAL NEEDLE CAGE	2			55,0X78,0X3,0		
	200	0501.334.358		AXIAL WASHER	2		Z00034899510	55,000X78,000X1,000		
	210	0735.321.508		NEEDLE CAGE	1			K 55,0X63,0X50,0		



# Parts list

Page 2 from 2

Material number: 4657.024.026

Plant: 465717301800

Material-assembly-group-no: 4657.173.018



4 WG 190 /

	Pos.	Material number	Customer material	Name	Quantity	ME	Amend. no.	Techn. Info.	Rep kit	Alternative material
	220	0735.300.548		TAPERED ROLLER BEARING	1			44,450X95,250X28,575		
	230	0735.300.547		TAPERED ROLLER BEARING	1			66,675X112,712X30,162		
	240	0734.401.267		PISTON RING	2			40,000X2,500		

# Plant

Page 1 from 1

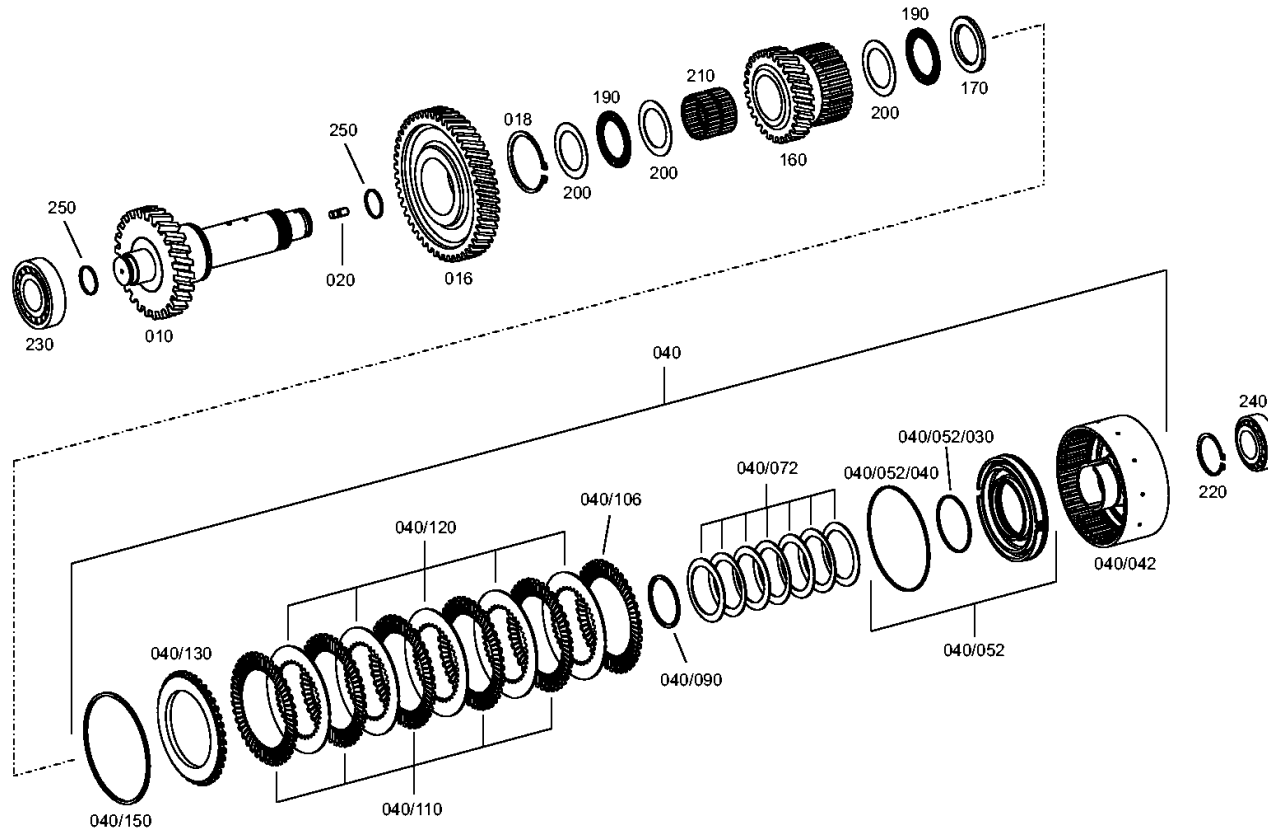
Material number: 4657.024.026

Plant: 465717403900

Material-assembly-group-no: 4657.174.039



4 WG 190 /  
COUPLING



# Parts list

Page 1 from 2



4 WG 190 /

Material number: 4657.024.026

Plant: 465717403900

Material-assembly-group-no: 4657.174.039

	Pos.	Material number	Customer material	Name	Quantity	ME	Amend. no.	Techn. Info.	Rep kit	Alternative material
	10	4657.374.039		SHAFT	1		Z00009825310	Z=32		
	16	4657.374.008		GEAR	1			Z=63		
	18	0630.501.050		RETAINING RING	1			80X2,5		
	20	0636.607.039		STUD	1			M10X16		
	40	4657.274.017		COUPLING	1					
	/106	0501.212.373		OUTER CLUTCH DISK	1					
	/110	0501.212.372		DISC	5			h=2,5		
	/120	0501.316.591		INNER CLUTCH DISK	5					
	/130	0501.316.594		END SHIM	1					
	/150	---		SNAP RING	1					
	---	0730.513.684		SNAP RING	1			h=2,10		
	---	0730.513.685		SNAP RING	1			h=2,25		
	---	0730.513.686		SNAP RING	1			h=2,40		
	---	0730.513.687		SNAP RING	1			h=2,55		
	---	0730.513.688		SNAP RING	1			h=2,70		
	---	0730.513.698		SNAP RING	1			h=2,85		
	---	0730.513.689		SNAP RING	1			h=3,00		
	---	0730.513.690		SNAP RING	1			h=3,15		
	---	0730.513.691		SNAP RING	1			h=3,30		
	---	0730.513.692		SNAP RING	1			h=3,45		
	---	0730.513.693		SNAP RING	1			h=3,60		
	---	0730.513.694		SNAP RING	1			h=3,75		
	---	0730.513.695		SNAP RING	1			h=3,90		
	---	0730.513.696		SNAP RING	1			h=4,05		
	---	0730.513.697		SNAP RING	1			h=4,20		
	/42	4657.374.036		DISC CARRIER	1			Z=44*Z=42		
	/52	4657.275.006		PISTON	1			KPL.		
	//30	0634.313.643		O-RING	1			75X3		
	//40	0634.313.719		O-RING	1			142X3		
	/72	0501.316.541		CUP SPRING	7			68,500X89,000X1,400		
	/90	0501.324.228		L-RING	1					
	160	4657.374.013		IDLER	1			Z=37		
	170	0635.290.114		RUNNING DISK	1			55X78X5		
	190	0735.368.076		AXIAL NEEDLE CAGE	2			55,0X78,0X3,0		

# Parts list

Page 2 from 2

Material number: 4657.024.026

Plant: 465717403900

Material-assembly-group-no: 4657.174.039



4 WG 190 /

	Pos.	Material number	Customer material	Name	Quantity	ME	Amend. no.	Techn. Info.	Rep kit	Alternative material
🛒	200	0501.334.358		AXIAL WASHER	3		Z00034899510	55,000X78,000X1,000		
🛒	210	0735.321.508		NEEDLE CAGE	1			K 55,0X63,0X50,0		
🛒	220	0630.501.038		RETAINING RING	1			55X2		
🛒	230	0735.300.548		TAPERED ROLLER BEARING	1			44,450X95,250X28,575		
🛒	240	0735.300.550		TAPERED ROLLER BEARING	1			39,688X76,200X25,654		
🛒	250	0734.401.267		PISTON RING	2			40,000X2,500		

# Plant

Page 1 from 1

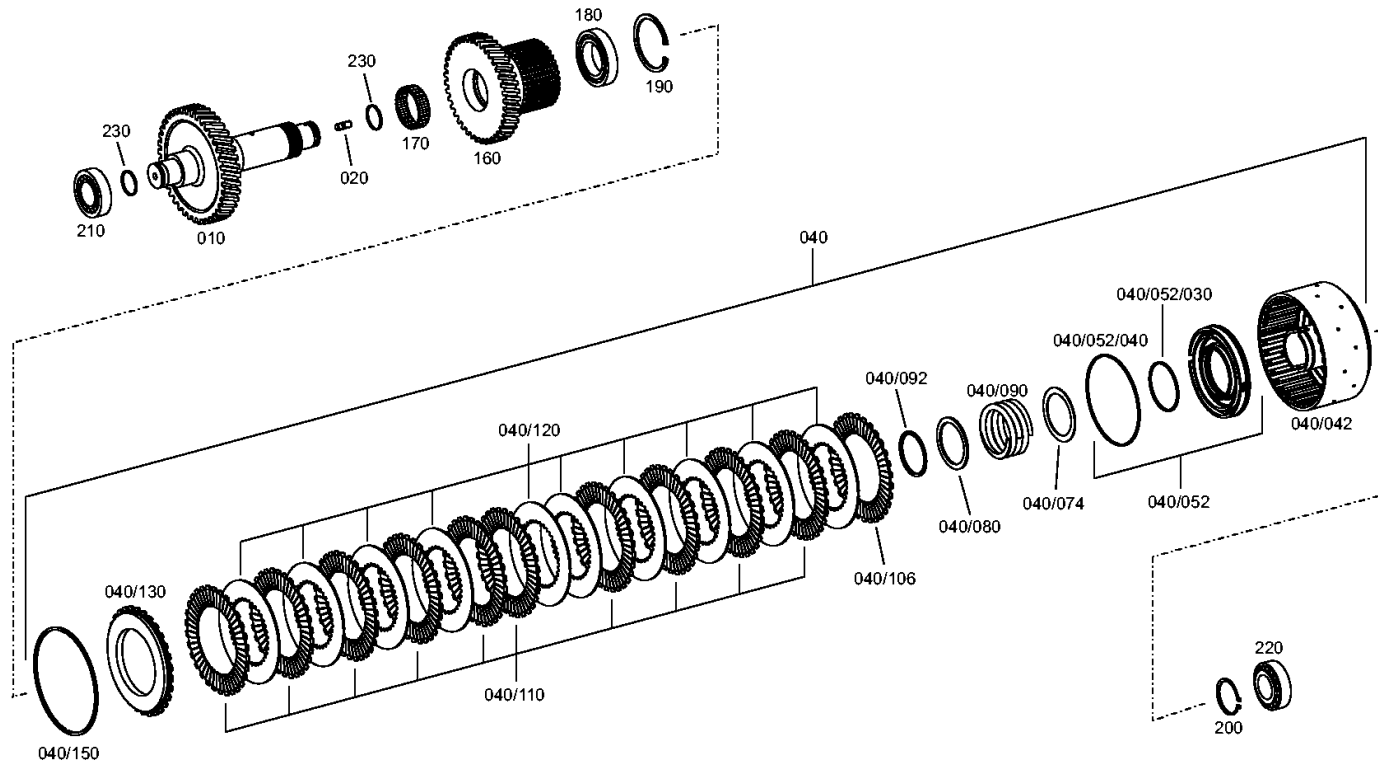
Material number: 4657.024.026

Plant: 465717501500

Material-assembly-group-no: 4657.175.015



4 WG 190 /  
COUPLING



# Parts list

Page 1 from 2



4 WG 190 /

Material number: 4657.024.026

Plant: 465717501500

Material-assembly-group-no: 4657.175.015

	Pos.	Material number	Customer material	Name	Quantity	ME	Amend. no.	Techn. Info.	Rep kit	Alternative material
	10	4657.375.020		SHAFT	1		Z00009825310	Z=42*Z=55		
	20	0636.607.039		STUD	1			M10X16		
	40	4657.275.011		COUPLING	1					
	/106	0501.212.371		FRICTION DISC	1					
	/110	0501.212.370		DISC	10					
	/120	0501.316.592		INNER CLUTCH DISK	10					
	/130	4657.371.045		END SHIM	1			Z=34		
	/150	---		SNAP RING	1					
	---	0730.513.702		SNAP RING	1			h=2,25		
	---	0730.513.703		SNAP RING	1			h=2,4		
	---	0730.513.704		SNAP RING	1			h=2,55		
	---	0730.513.705		SNAP RING	1			h=2,7		
	---	0730.513.706		SNAP RING	1			h=2,85		
	---	0730.513.707		SNAP RING	1			h=3,0		
	---	0730.513.708		SNAP RING	1			h=3,15		
	---	0730.513.709		SNAP RING	1			h=3,30		
	---	0730.513.710		SNAP RING	1			h=3,45		
	---	0730.513.711		SNAP RING	1			h=3,60		
	---	0730.513.712		SNAP RING	1			h=3,75		
	---	0730.513.713		SNAP RING	1			h=3,90		
	---	0730.513.714		SNAP RING	1			h=4,05		
	---	0730.513.715		SNAP RING	1			h=4,20		
	/42	4657.375.019		DISC CARRIER	1			Z=34*Z=42		
	/52	4657.275.006		PISTON	1			KPL.		
	//30	0634.313.643		O-RING	1			75X3		
	//40	0634.313.719		O-RING	1			142X3		
	/74	0730.110.373		WASHER	1					
	/80	0730.011.028		SUPPORTING RING	1					
	/90	0732.042.711		COMPRESSION SPRING	1					
	/92	0501.324.228		L-RING	1					
	160	4657.375.003		IDLER	1			Z=52		
	170	0735.321.408		NEEDLE CAGE	1			K 60,0X68,0X20,0		
	180	0735.301.814		BALL BEARING	1			55,000X90,000X18,000		
	190	0630.502.042		RETAINING RING	1			90X3		

# Parts list

Page 2 from 2

Material number: 4657.024.026

Plant: 465717501500

Material-assembly-group-no: 4657.175.015



4 WG 190 /

	Pos.	Material number	Customer material	Name	Quantity	ME	Amend. no.	Techn. Info.	Rep kit	Alternative material
🛒	200	0630.501.038		RETAINING RING	1			55X2		
🛒	210	0735.300.550		TAPERED ROLLER BEARING	1			39,688X76,200X25,654		
🛒	220	0735.300.550		TAPERED ROLLER BEARING	1			39,688X76,200X25,654		
🛒	230	0734.401.267		PISTON RING	2			40,000X2,500		

# Plant

Page 1 from 1

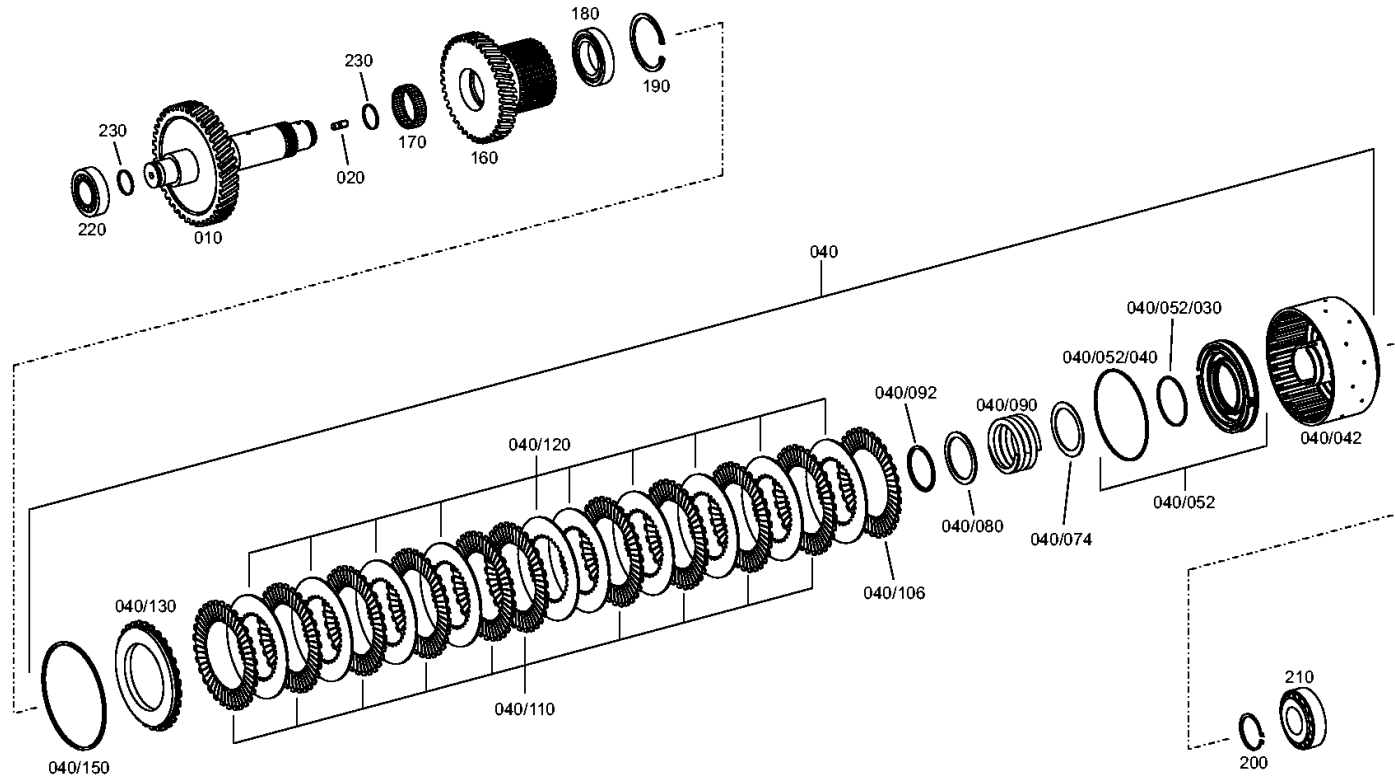
Material number: 4657.024.026

Plant: 465717601800

Material-assembly-group-no: 4657.176.018



4 WG 190 /  
COUPLING





# Parts list

Page 1 from 2



4 WG 190 /

Material number: 4657.024.026

Plant: 465717601800

Material-assembly-group-no: 4657.176.018

	Pos.	Material number	Customer material	Name	Quantity	ME	Amend. no.	Techn. Info.	Rep kit	Alternative material
	10	4657.376.010		SHAFT	1		Z00009825310	Z=58		
	20	0636.607.039		STUD	1			M10X16		
	40	4657.275.011		COUPLING	1					
	/106	0501.212.371		FRICTION DISC	1					
	/110	0501.212.370		DISC	10					
	/120	0501.316.592		INNER CLUTCH DISK	10					
	/130	4657.371.045		END SHIM	1			Z=34		
	/150	---		SNAP RING	1					
	---	0730.513.702		SNAP RING	1			h=2,25		
	---	0730.513.703		SNAP RING	1			h=2,4		
	---	0730.513.704		SNAP RING	1			h=2,55		
	---	0730.513.705		SNAP RING	1			h=2,7		
	---	0730.513.706		SNAP RING	1			h=2,85		
	---	0730.513.707		SNAP RING	1			h=3,0		
	---	0730.513.708		SNAP RING	1			h=3,15		
	---	0730.513.709		SNAP RING	1			h=3,30		
	---	0730.513.710		SNAP RING	1			h=3,45		
	---	0730.513.711		SNAP RING	1			h=3,60		
	---	0730.513.712		SNAP RING	1			h=3,75		
	---	0730.513.713		SNAP RING	1			h=3,90		
	---	0730.513.714		SNAP RING	1			h=4,05		
	---	0730.513.715		SNAP RING	1			h=4,20		
	/42	4657.375.019		DISC CARRIER	1			Z=34*Z=42		
	/52	4657.275.006		PISTON	1			KPL.		
	//30	0634.313.643		O-RING	1			75X3		
	//40	0634.313.719		O-RING	1			142X3		
	/74	0730.110.373		WASHER	1					
	/80	0730.011.028		SUPPORTING RING	1					
	/90	0732.042.711		COMPRESSION SPRING	1					
	/92	0501.324.228		L-RING	1					
	160	4657.375.003		IDLER	1			Z=52		
	170	0735.321.408		NEEDLE CAGE	1			K 60,0X68,0X20,0		
	180	0735.301.814		BALL BEARING	1			55,000X90,000X18,000		
	190	0630.502.042		RETAINING RING	1			90X3		

# Parts list

Page 2 from 2

Material number: 4657.024.026

Plant: 465717601800

Material-assembly-group-no: 4657.176.018



4 WG 190 /

	Pos.	Material number	Customer material	Name	Quantity	ME	Amend. no.	Techn. Info.	Rep kit	Alternative material
	200	0630.501.038		RETAINING RING	1			55X2		
	210	0735.300.548		TAPERED ROLLER BEARING	1			44,450X95,250X28,575		
	220	0735.300.550		TAPERED ROLLER BEARING	1			39,688X76,200X25,654		
	230	0734.401.267		PISTON RING	2			40,000X2,500		

# Plant

Page 1 from 1

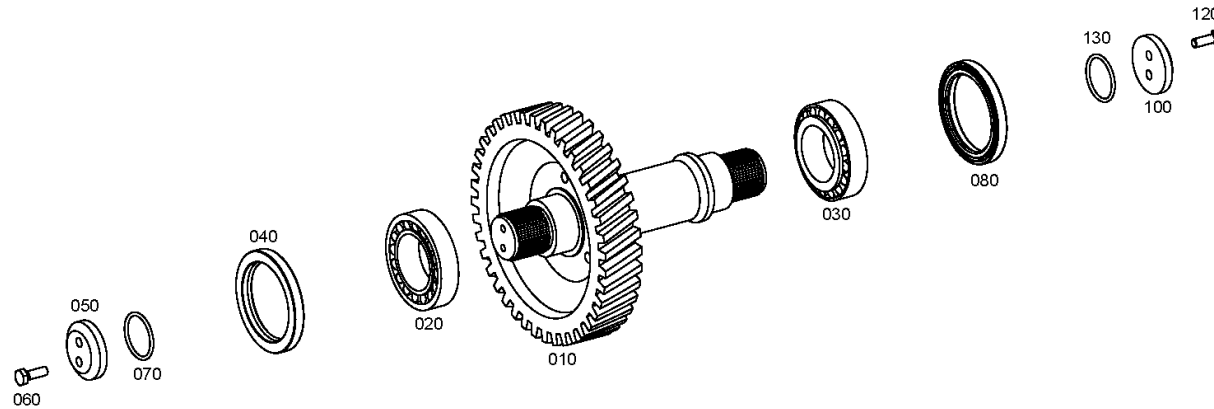
Material number: 4657.024.026

Plant: 465710300600

Material-assembly-group-no: 4657.103.006



4 WG 190 /  
OUTPUT



# Parts list

Page 1 from 1

Material number: 4657.024.026

Plant: 465710300600

Material-assembly-group-no: 4657.103.006



4 WG 190 /

	Pos.	Material number	Customer material	Name	Quantity	ME	Amend. no.	Techn. Info.	Rep kit	Alternative material
	10	4657.303.042		OUTPUT SHAFT	1		K01111/0610	Z=42*Z=49*Z=42		
	20	0735.300.547		TAPERED ROLLER BEARING	1			66,675X112,712X30,162		
	30	0735.300.547		TAPERED ROLLER BEARING	1			66,675X112,712X30,162		
	40	0750.111.116		SHAFT SEAL	1			90,0X120,0X13,0		
	50	4644.303.259		WASHER	1			68,000X15,500		
	60	0636.100.787		HEXAGON SCREW	2			M10X30		
	70	0634.303.466		O-RING	1			48X4		
	80	0750.111.116		SHAFT SEAL	1			90,0X120,0X13,0		
	100	4644.303.259		WASHER	1			68,000X15,500		
	120	0636.100.787		HEXAGON SCREW	2			M10X30		
	130	0634.303.466		O-RING	1			48X4		

# Plant

Page 1 from 1

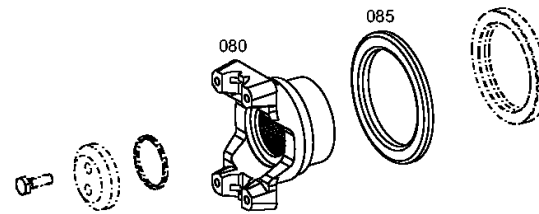
Material number: 4657.024.026

Plant: 465710340600

Material-assembly-group-no: 4657.103.406



4 WG 190 /  
OUTPUT



# Parts list

Page 1 from 1

Material number: 4657.024.026

Plant: 465710340600

Material-assembly-group-no: 4657.103.406



4 WG 190 /

	Pos.	Material number	Customer material	Name	Quantity	ME	Amend. no.	Techn. Info.	Rep kit	Alternative material
🛒	80	0501.317.988		OUTPUT FLANGE	1		K00882/9910	DS-1550-N55x1,25		
🛒	85	4657.303.018		SCREEN SHEET	1		K00882/9910			

# Plant

Page 1 from 1

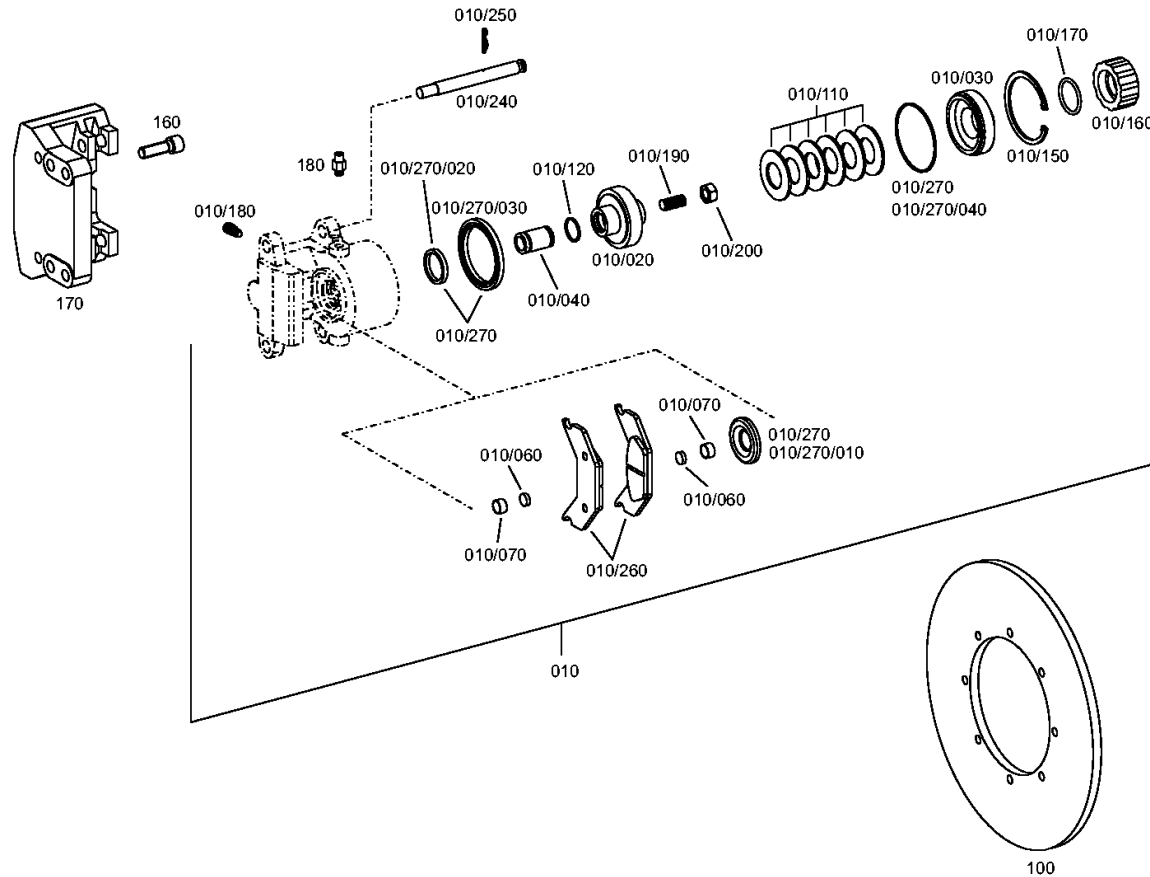
Material number: 4657.024.026

Plant: 465610901400

Material-assembly-group-no: 4656.109.014



4 WG 190 /  
PARKING BRAKE



# Parts list

Page 1 from 1



4 WG 190 /

Material number: 4657.024.026

Plant: 465610901400

Material-assembly-group-no: 4656.109.014

	Pos.	Material number	Customer material	Name	Quantity	ME	Amend. no.	Techn. Info.	Rep kit	Alternative material
	10	0501.211.070		BRAKE	1			KPL.		
	/110	0501.317.045		CUP SPRING	6					
	/120	0501.317.046		O-RING	1					
	/150	0630.502.075		RETAINING RING	1			92X3		
	/160	0501.331.455		SCREW CAP	1					
	/170	0501.317.049		O-RING	1					
	/180	0501.209.288		BREATHER	1					
	/190	0501.317.060		SET SCREW	1					
	/20	0501.317.036		PISTON	1					
	/200	0501.317.061		HEXAGON NUT	1					
	/240	0501.317.572		PIN	2					
	/250	0501.317.573		SPRING COTTER	2					
	/260	0501.211.346		BRAKE LINING KIT	1					
	/270	0501.211.347		SEAL KIT	1					
	//10	0501.317.042		DUST CAP	1					
	//20	0501.317.043		GROOVED RING	1					
	//30	0501.317.044		GROOVED RING	1					
	//40	0501.317.047		O-RING	1					
	/30	0501.317.037		PRESSURE RING	1					
	/40	0501.317.038		PRESSURE PIN	1					
	/60	0501.317.040		PERMANENT MAGNET	2					
	/70	0501.317.041		TOLERANCE RING	2					
	100	4462.301.207		BRAKE DISC	1					
	160	0636.102.490		CAP SCREW	4			M14X45		
	170	0501.316.789		BRAKE CARRIER	1					
	180	0637.885.494		SCREW-IN SLEEVE	1					



# Plant

Page 1 from 1

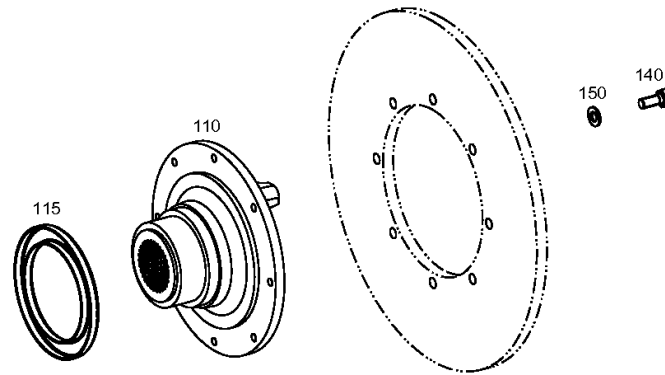
Material number: 4657.024.026

Plant: 465710940400

Material-assembly-group-no: 4657.109.404



4 WG 190 /  
PARKING BRAKE



# Parts list

Page 1 from 1

Material number: 4657.024.026

Plant: 465710940400

Material-assembly-group-no: 4657.109.404



4 WG 190 /

	Pos.	Material number	Customer material	Name	Quantity	ME	Amend. no.	Techn. Info.	Rep kit	Alternative material
	110	0501.317.989		OUTPUT FLANGE	1		K00881/9910			
	115	4657.303.014		SCREEN SHEET	1		K00881/9910			
	140	0636.015.166		HEXAGON SCREW	8			M10X25		
	150	0630.001.014		WASHER	8					

# Plant

Page 1 from 1

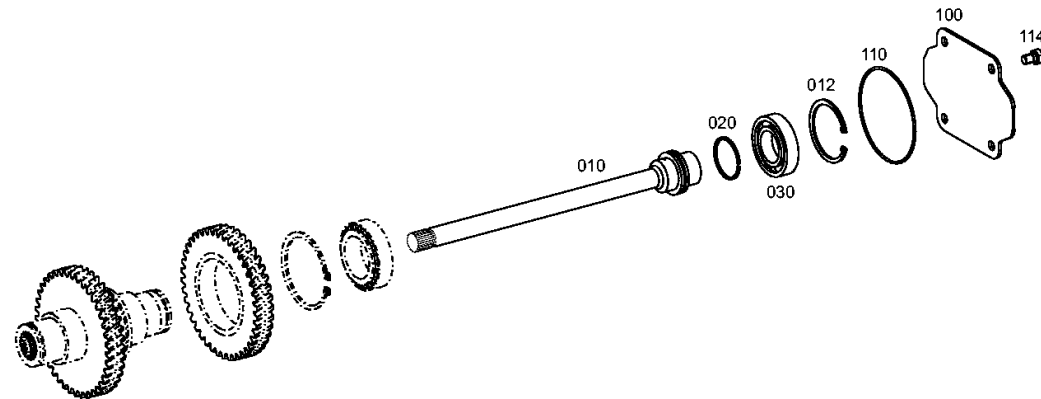
Material number: 4657.024.026

Plant: 465715400400

Material-assembly-group-no: 4657.154.004



4 WG 190 /  
POWER TAKE-OFF



# Parts list

Page 1 from 1

Material number: 4657.024.026

Plant: 465715400400

Material-assembly-group-no: 4657.154.004



4 WG 190 /

	Pos.	Material number	Customer material	Name	Quantity	ME	Amend. no.	Techn. Info.	Rep kit	Alternative material
	10	4657.354.020		PUMP SHAFT	1		K01714/9710	Z=21*Z=14		
	12	0630.502.040		RETAINING RING	1			85X3		
	20	0634.402.557		R-RING	1		K01706/0010	60X3		
	30	0750.116.008		BALL BEARING	1			45,000X85,000X19,000		
	100	4656.354.009		COVER PLATE	1		K00889/9710			
	110	0634.304.616		O-RING	1			130X3		
	114	0636.102.411		HEXAGON SCREW	4			M12X18		

# Plant

Page 1 from 1

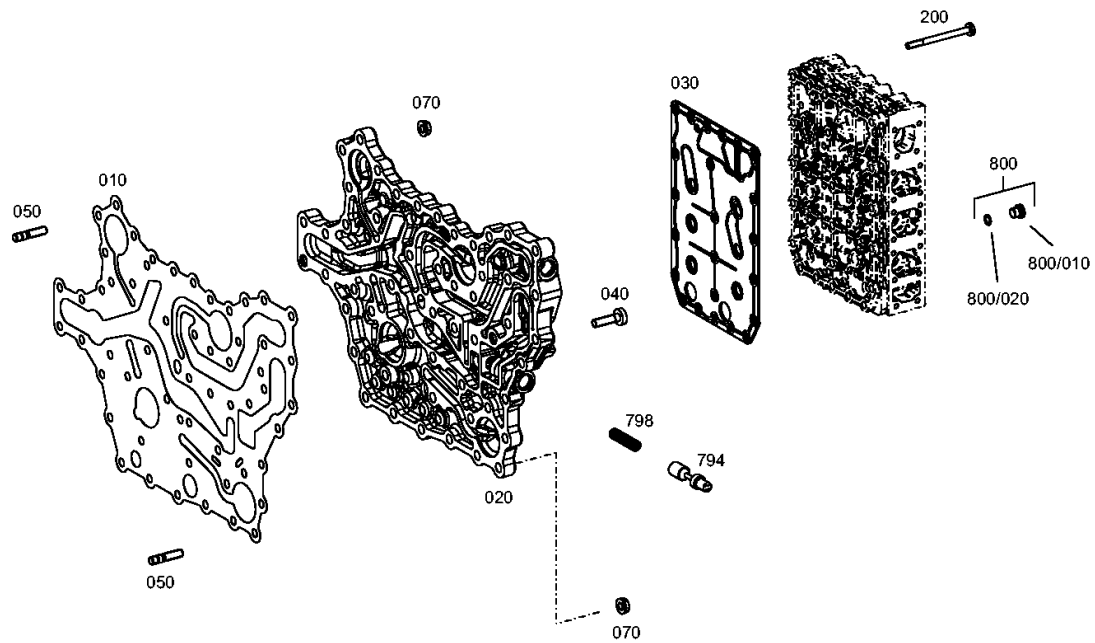
Material number: 4657.024.026

Plant: 465710601200

Material-assembly-group-no: 4657.106.012



4 WG 190 /  
SHIFT SYSTEM



# Parts list

Page 1 from 1

Material number: 4657.024.026

Plant: 465710601200

Material-assembly-group-no: 4657.106.012



4 WG 190 /

	Pos.	Material number	Customer material	Name	Quantity	ME	Amend. no.	Techn. Info.	Rep kit	Alternative material
	10	4657.306.022		GASKET	1					
	20	4657.306.029		DUCT PLATE	1					
	30	4656.306.179		INTERMEDIATE SHEET	1		Z00016403510			
	40	0736.300.233		TORX SCREW	36			M8X30		
	50	0636.102.496		STUD	14			M8X25		
	70	0637.100.139		HEXAGON NUT	14			M8		
	200	0736.300.093		TORX SCREW	23			M6X76		
	794	4664.306.025		PISTON	1					
	798	0732.042.761		COMPRESSION SPRING	1			D=1,6		
	800	4475.280.197		SCREW PLUG	8			M10X1 KPL.MIT O-RING		
	/20	0634.303.280		O-RING	1			8X1,5		

# Plant

Page 1 from 1

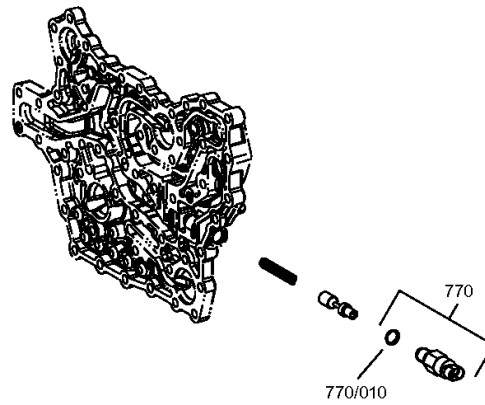
Material number: 4657.024.026

Plant: 465710640720

Material-assembly-group-no: 4657.106.407



4 WG 190 /  
SHIFT SYSTEM



# Parts list

Page 1 from 1

Material number: 4657.024.026

Plant: 465710640720

Material-assembly-group-no: 4657.106.407



4 WG 190 /

	Pos.	Material number	Customer material	Name	Quantity	ME	Amend. no.	Techn. Info.	Rep kit	Alternative material
	770	0501.210.966		TAPPET SWITCH	1					
	/10	0634.306.523		O-RING	1			13X2		



# Plant

Page 1 from 2

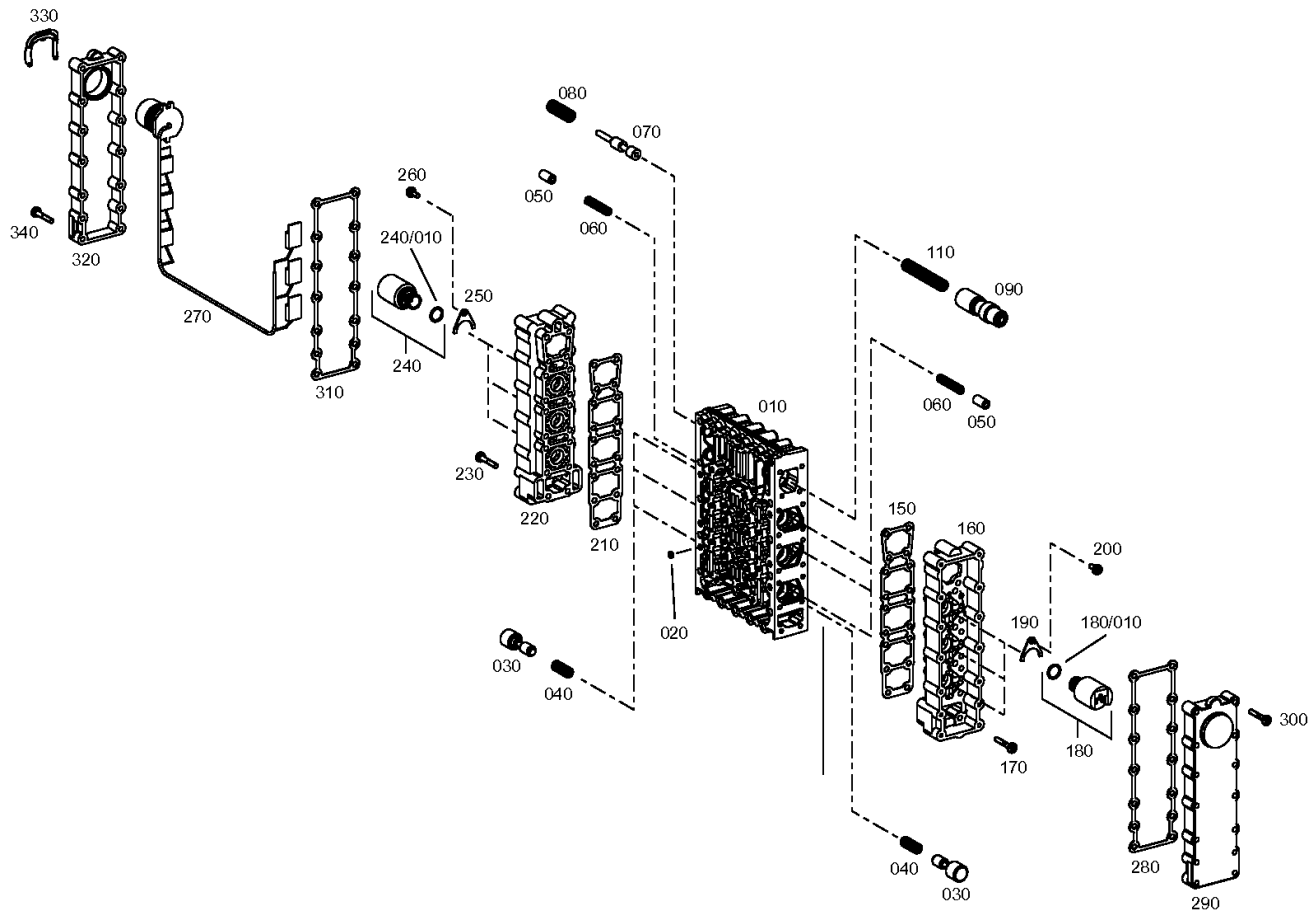
Material number: 4657.024.026

Plant: 465615901921

Material-assembly-group-no: 4656.159.019



4 WG 190 /  
SHIFT SYSTEM



# Plant

Page 2 from 2

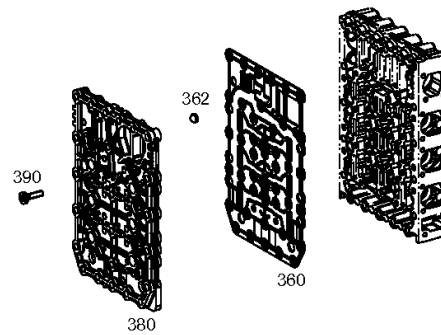
Material number: 4657.024.026

Plant: 465615901922

Material-assembly-group-no: 4656.159.019



4 WG 190 /  
SHIFT SYSTEM



# Parts list

Page 1 from 2



4 WG 190 /

Material number: 4657.024.026

Plant: 465615901921

Material-assembly-group-no: 4656.159.019

	Pos.	Material number	Customer material	Name	Quantity	ME	Amend. no.	Techn. Info.	Rep kit	Alternative material
	10	4656.306.170		VALVE BLOCK	1					
	20	0730.361.070		ORIFICE	6			D=0,8 IN 0730 361 120(2)		
	30	4656.306.095		PISTON	6					
	40	0732.042.538		COMPRESSION SPRING	6					
	50	4656.306.013		PISTON	6					
	60	0732.042.539		COMPRESSION SPRING	6					
	70	4656.306.074		PISTON	1					
	80	0732.042.631		COMPRESSION SPRING	1					
	90	4656.306.152		CONTROL PISTON	1					
	110	0732.042.719		COMPRESSION SPRING	1					
	150	4656.306.158		GASKET	1					
	160	4656.306.116		HOUSING	1					
	170	0736.300.229		TORX SCREW	18			M5X30		
	180	0501.314.770		PRESSURE REGULATOR	3			VR030AA032D03 MAGNET-SCHULT		
	/10	0734.313.134		O-RING	1					
	190	1043.326.045		FIXING PLATE	3					
	200	0736.101.094		HEXALOBULAR DRIVING SCREW	3			M5X12		
	210	4656.306.158		GASKET	1					
	220	4656.306.116		HOUSING	1					
	230	0736.300.229		TORX SCREW	18			M5X30		
	240	0501.314.770		PRESSURE REGULATOR	3			VR030AA032D03 MAGNET-SCHULT		
	/10	0734.313.134		O-RING	1					
	250	1043.326.045		FIXING PLATE	3					
	260	0736.101.094		HEXALOBULAR DRIVING SCREW	3			M5X12		
	270	4656.206.006		WIRING HARNESS	1			KPL.HSG-94 SERIE 1		
	280	4656.306.157		GASKET	1					
	290	4656.306.054		COVER	1					
	300	0736.300.229		TORX SCREW	14			M5X30		
	310	4656.306.157		GASKET	1					
	320	4656.306.055		COVER	1					
	330	1058.327.026		RETAINING CLAMP	1					
	340	0736.300.229		TORX SCREW	14			M5X30		

# Parts list

Page 2 from 2

Material number: 4657.024.026

Plant: 465615901921

Material-assembly-group-no: 4656.159.019



4 WG 190 /

	Pos.	Material number	Customer material	Name	Quantity	ME	Amend. no.	Techn. Info.	Rep kit	Alternative material
🛒	360	4656.306.180		INTERMEDIATE SHEET	1		Z00016403510			
🛒	362	0501.316.715		SCREEN	6					
🛒	380	4656.306.150		DUCT PLATE	1					
🛒	390	0736.300.092		TORX SCREW	18			M6X23		

# Plant

Page 1 from 1

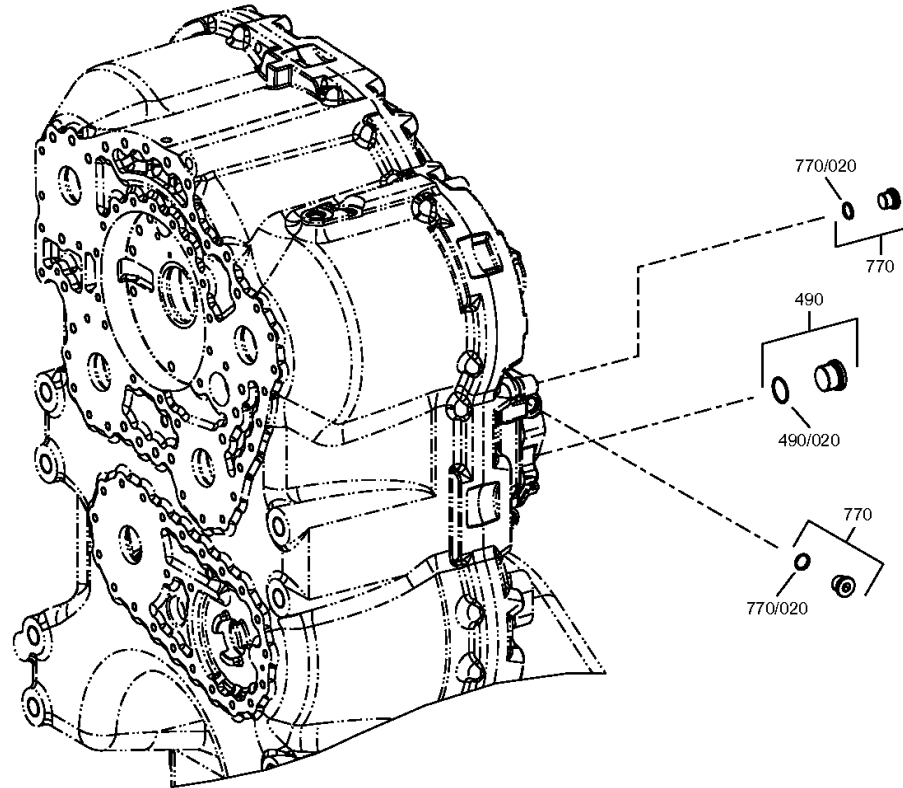
Material number: 4657.024.026

Plant: 465712300600

Material-assembly-group-no: 4657.123.006



4 WG 190 /  
CONTROL UNIT



# Parts list

Page 1 from 1

Material number: 4657.024.026

Plant: 465712300600

Material-assembly-group-no: 4657.123.006



4 WG 190 /

	Pos.	Material number	Customer material	Name	Quantity	ME	Amend. no.	Techn. Info.	Rep kit	Alternative material
	490	4475.280.209		SCREW PLUG	1					
	/20	0634.313.233		O-RING	1			23X2		
	770	4475.280.208		SCREW PLUG	2					
	/20	0634.316.523		O-RING	1			13X2		

# Plant

Page 1 from 1

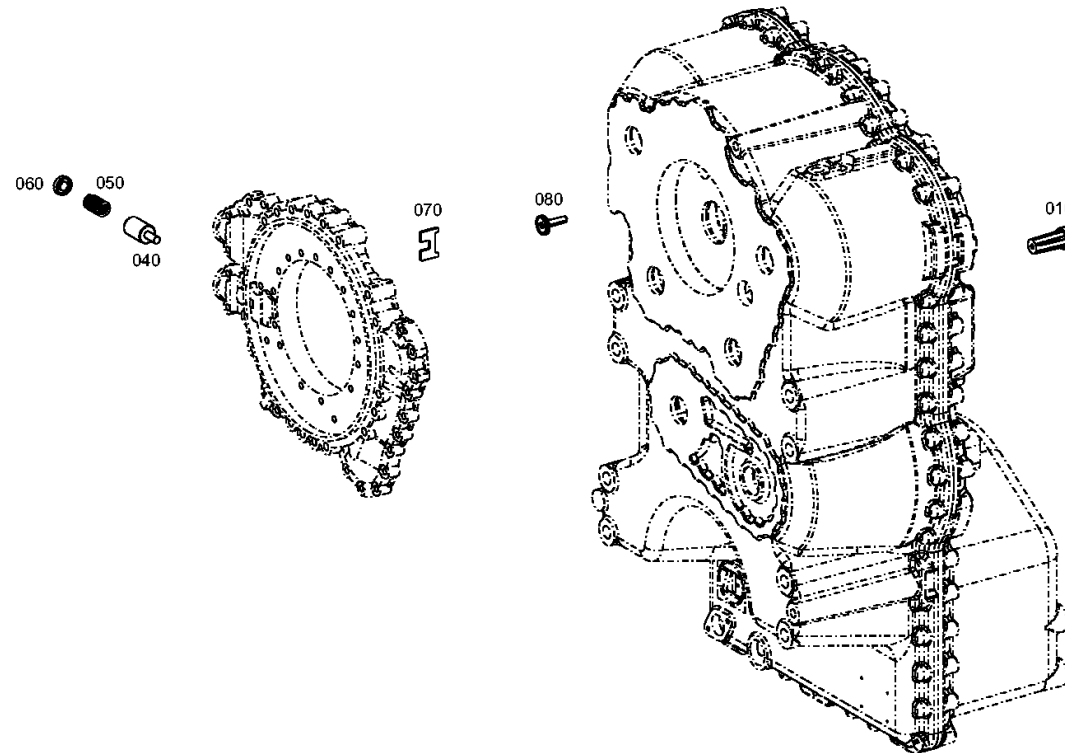
Material number: 4657.024.026

Plant: 465712000300

Material-assembly-group-no: 4657.120.003



4 WG 190 /  
PRESSURE REGULATOR



# Parts list

Page 1 from 1

Material number: 4657.024.026

Plant: 465712000300

Material-assembly-group-no: 4657.120.003



4 WG 190 /

	Pos.	Material number	Customer material	Name	Quantity	ME	Amend. no.	Techn. Info.	Rep kit	Alternative material
🛒	10	0501.211.384		VALVE	1					
🛒	40	4656.306.107		PISTON	1					
🛒	50	0732.042.767		COMPRESSION SPRING	1					
🛒	60	4656.306.077		PRESSURE PLATE	1					
🛒	70	4656.306.078		LOCKING PLATE	1					
🛒	80	0501.213.034		PRESS.REL.VALVE	1		K01835/0110			



# Plant

Page 1 from 1

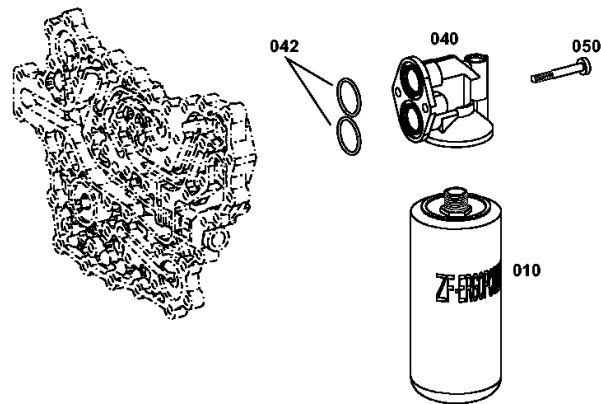
Material number: 4657.024.026

Plant: 465613800600

Material-assembly-group-no: 4656.138.006



4 WG 190 /  
FILTER



# Parts list

Page 1 from 1

Material number: 4657.024.026

Plant: 465613800600

Material-assembly-group-no: 4656.138.006



4 WG 190 /

	Pos.	Material number	Customer material	Name	Quantity	ME	Amend. no.	Techn. Info.	Rep kit	Alternative material
	10	0501.333.764		PRESSURE FILTER	1					
	40	0501.210.925		FILTER HEAD	1		K01470/9710	KPL.		
	42	0634.306.053		O-RING	2		K01160/0610	34,2X3		
	50	0736.300.183		TORX SCREW	2			M8X60		

# Plant

Page 1 from 1

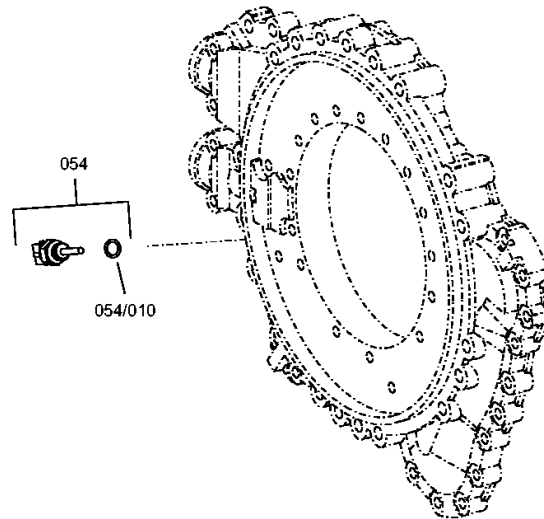
Material number: 4657.024.026

Plant: 465712400200

Material-assembly-group-no: 4657.124.002



4 WG 190 /  
TEMPERATURE SENSOR



# Parts list

Page 1 from 1

Material number: 4657.024.026

Plant: 465712400200

Material-assembly-group-no: 4657.124.002



4 WG 190 /

	Pos.	Material number	Customer material	Name	Quantity	ME	Amend. no.	Techn. Info.	Rep kit	Alternative material
	54	0501.322.532		TEMPERATURE SENSOR	1		K00547/0610	TEMP GEBER EXT LANG		
	/10	0634.313.366		O-RING	1			11X2		

# Plant

Page 1 from 1

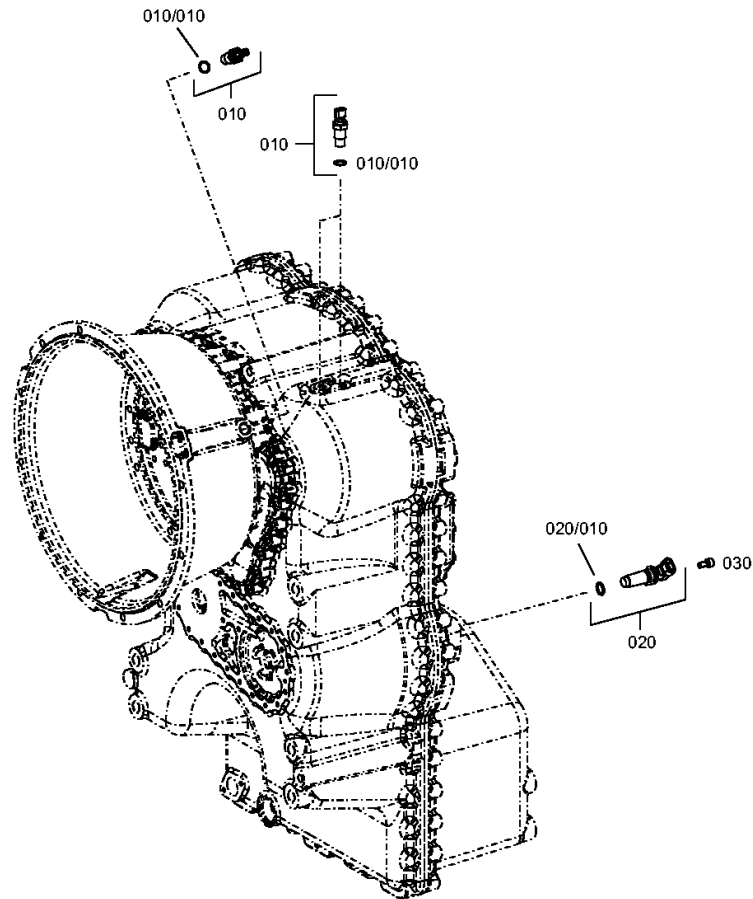
Material number: 4657.024.026

Plant: 465712500700

Material-assembly-group-no: 4657.125.007



4 WG 190 /  
INDUCTIVE SENSOR



# Parts list

Page 1 from 1

Material number: 4657.024.026

Plant: 465712500700

Material-assembly-group-no: 4657.125.007



4 WG 190 /

	Pos.	Material number	Customer material	Name	Quantity	ME	Amend. no.	Techn. Info.	Rep kit	Alternative material
	10	0501.209.719		INDUCTIVE SENSOR	3					
	/10	0734.313.125		O-RING	1					
	20	0501.317.949		SPEED SENSOR	1			ENTHALT.IN 0501 317 941(2)		
	/10	0634.313.728		O-RING	1			15,54X2,62		
	30	0636.115.293		CAP SCREW	1			M8X16		

# Plant

Page 1 from 1

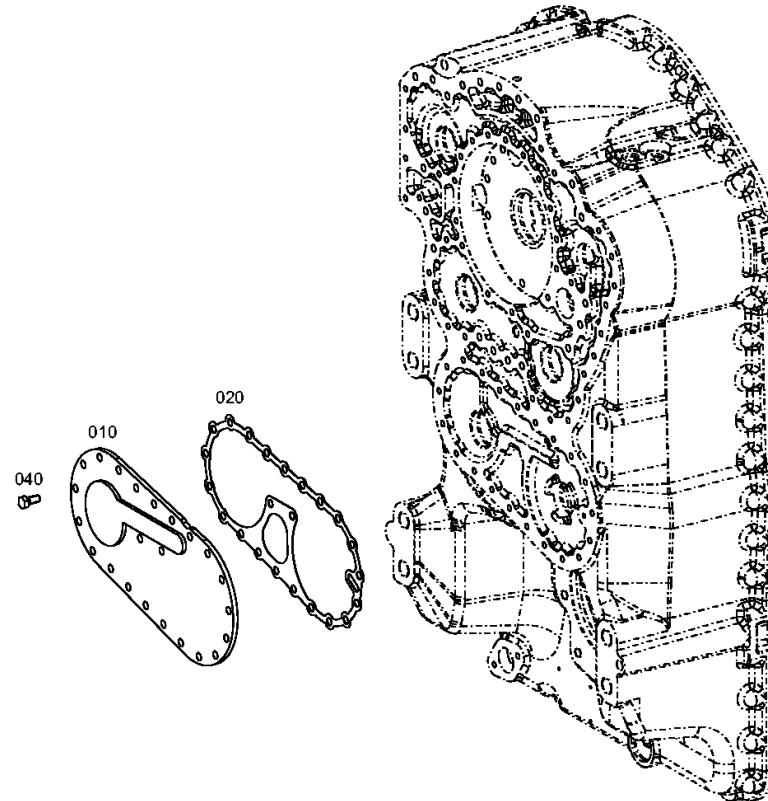
Material number: 4657.024.026

Plant: 465613700400

Material-assembly-group-no: 4656.137.004



4 WG 190 /  
EMERGENCY STEERING PUMP



# Parts list

Page 1 from 1

Material number: 4657.024.026

Plant: 465613700400

Material-assembly-group-no: 4656.137.004



4 WG 190 /

	Pos.	Material number	Customer material	Name	Quantity	ME	Amend. no.	Techn. Info.	Rep kit	Alternative material
🛒	10	4656.337.005		COVER	1					
🛒	20	4656.337.010		GASKET	1		K00072/01110			
🛒	40	0636.015.681		HEXAGON SCREW	23			M8X18		



# Plant

Page 1 from 1

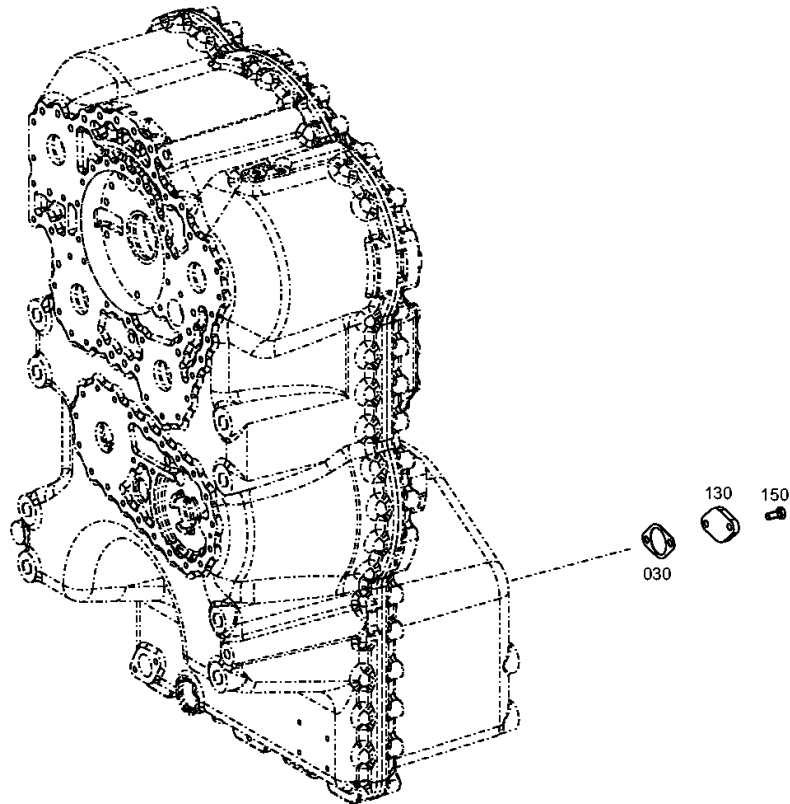
Material number: 4657.024.026

Plant: 465713100650

Material-assembly-group-no: 4657.131.006



4 WG 190 /  
FILLER NOZZLE



# Parts list

Page 1 from 1

Material number: 4657.024.026

Plant: 465713100650

Material-assembly-group-no: 4657.131.006



4 WG 190 /

	Pos.	Material number	Customer material	Name	Quantity	ME	Amend. no.	Techn. Info.	Rep kit	Alternative material
	30	4642.331.216		GASKET	1					
	130	4644.301.014		COVER PLATE	1			E=8		
	150	0636.015.681		HEXAGON SCREW	2			M8X18		

Material number: 4657.024.026

Plant: 465729800900

Material-assembly-group-no: 4657.298.009



4 WG 190 /  
SEAL KIT

- Alternativ zur Bestellung von einzelnen Dichtungsteilen bieten wir als Vereinfachung bzw. Erleichterung komplette Dichtungssätze an, und zwar:
1. Kompletter Dichtungssatz, bestehend aus sämtlichen Dichtungsteilen (Wellendichtringe, Runddichtringe, O-Ringe, Profildichtringe, Rechteckringe und Flachdichtungssatz).
  2. Flachdichtungssatz
- Bei der Bestellung eines Dichtungs-, oder eines Flachdichtungssatzes sind generell Type, Stücklistennummer, Aggregatnummer und Fabrikat des Fahrzeuges anzugeben.

- Instead of placing an order for individual sealing parts we offer you complete sets of seals as a simpler and easier alternative, i.e.:
1. Complete sets of seals consisting of all sealing parts (seals, slip-ring seals, o-ring seals, profile seals, rectangular rings and flat gasket set)
  2. flat gasket set
- When placing an order for a set of seals or a flat gasket set, always indicate type, parts list number, unit number and vehicle type.

- Au lieu de passer une commande pour les pièces de joint individuelles nous vous offrons une alternative plus simple et plus facile, c'est-à-dire, vous pouvez commander:
1. un jeu complet de joints qui se compose de (garnitures en anneaux, joints à anneaux, joints toriques, étoupes profilées, anneaux rectangulaires et jeu de garniture plate)
  2. un jeu de garniture plate
- Dans les commandes pour un jeu complet de joints ou bien un jeu de garniture plate il faut chaque fois indiquer le type, la nomenclature, le numéro de l'agrégat ainsi que le type du véhicule.

- Invece dell'ordinazione di singoli elementi di tenuta Vi offriamo come alternativa più facile e comoda i seguenti corredi guarnizioni completi:
1. Corredo guarnizioni completo, composto da tutti gli elementi di tenuta (anelli di tenuta sull'albero, anelli di tenuta in gomma a sezione circolare, anelli O-ring, anelli di tenuta con profilo, anelli a sezione rettangolare e corredo guarnizioni piatte).
  2. Corredo guarnizioni piatte
- Nell'ordine del corredo guarnizioni o corredo guarnizioni piatte specificare sempre il tipo, il no della nomenclatura, il numero del gruppo e prodotto del veicolo.

- En lugar de hacer un pedido para las piezas de juntas individuales le ofrecemos juegos de juntas completos como una alternativa más simple y más fácil, es decir:
1. un juego completo de juntas compuesto por todas las piezas de juntas (retenes de eje, anillos de junta, anillos tóricos, anillos retén de perfil, anillos rectangulares y juego de juntas planas)
  2. un juego de juntas planas
- Al hacer un pedido de un juego completo de juntas o de un juego de juntas planas se indicará siempre el tipo, el número de la lista de piezas, el número de conjunto así como el tipo de vehículo.

Kompletter Dichtungssatz      4657 298 009  
Complete set of seals  
Jeu complet de joints  
Corredo guarnizioni completo  
Juego completo de juntas

Flachdichtungssatz      4657 298 010  
flat gasket set  
un jeu de garniture plate  
Corredo guarnizioni piatte  
un juego de juntas planas

# Parts list

Page 1 from 1

Material number: 4657.024.026

Plant: 465729800900

Material-assembly-group-no: 4657.298.009



4 WG 190 /

	Pos.	Material number	Customer material	Name	Quantity	ME	Amend. no.	Techn. Info.	Rep kit	Alternative material
		4657.298.009		SEAL KIT	1					