



LexisNexis® Early Data Analyzer + LAW PreDiscovery™ + Concordance® Software

Are you ready for more efficient and effective ways to manage discovery?

Did you know that “all-in-one” solutions often omit robust features available with individual software tools?

Today the most flexible and powerful capabilities are available with best-of-breed, individual software tools that work well together. For example, you can use LexisNexis® Early Data Analyzer together with LAW PreDiscovery™ software and Concordance® discovery management software to accomplish more without compromising quality or complicating your workflow:

- **Contain costs** related to collecting, producing and reviewing documents in a variety of formats
- **Manage the volume of data and documents** since litigation can produce millions of pages of evidence
- **Minimize the risk** of missing vital evidence or insight

Assess your document set early, cut it down to size and achieve better discovery review

Cull data on your network drive or an external drive

LexisNexis Early Data Analyzer filters, indexes, searches, culls and pre-processes your data in its source location.

This approach helps you improve early case assessment, determine the responsive data necessary for your case and validate your strategy.

Further cull and process data to streamline your work

LAW PreDiscovery software is your “processing engine” for bringing in all of the potential evidentiary documents—both paper and electronic—gathered throughout discovery.

LAW PreDiscovery enables your team to further pre-review and cull e-discovery and scanned documents, and perform essential processing prior to review.

Perform more effective review and production

Concordance discovery management software decreases the complexity of managing discovery.

Use it to search, review, organize, produce and share litigation documents generated during discovery.



LexisNexis® Hosted Litigation Solutions
Host all your litigation data and software—securely in a private cloud

Early Data Assessment

LexisNexis® Early Data Analyzer



Process Data
LAW PreDiscovery™

Review Documents

Concordance®



Software that works together

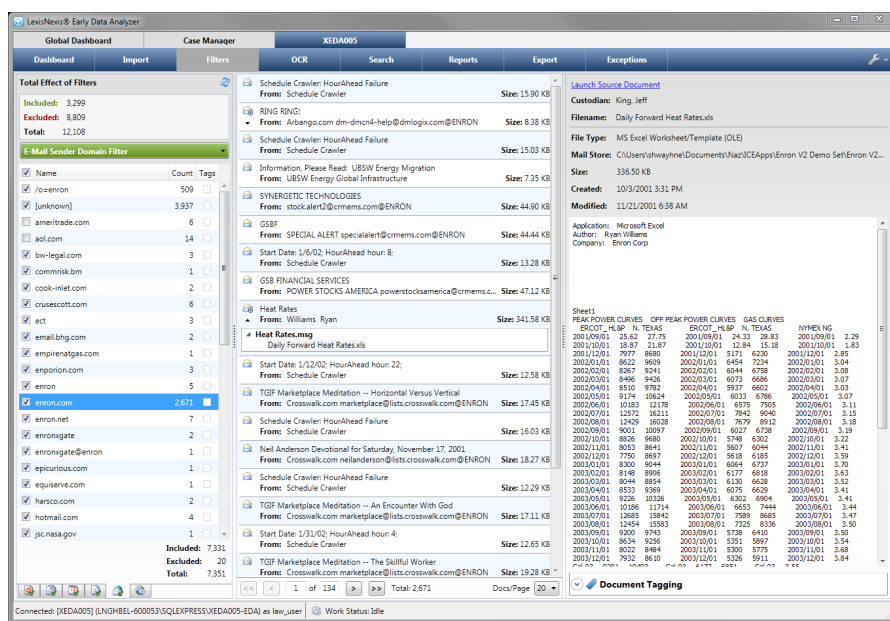
Step 1: Analyze and reduce your initial data

Use **LexisNexis Early Data Analyzer** to analyze your initial data set and reduce the volume of data where it lives—on your network, hard drives, external drives, CDs, DVDs and/or flash drives—at a rate of up to 28 GB per hour with one license. You gain vital insight into the size and scope of discovery at the earliest possible point.

- Logically and automatically deduplicate data across multiple data stores.
 - Perform content and field searching.
 - Filter and cull data based on date range, file type, email domain, etc.
 - Use de-NIST capabilities to remove operating system files, program files and other non-user created data.
- Complete optical character recognition (OCR) on the fly or in batches.
- Perform group and document tagging.
- Create or use as many default fields as necessary for searching or to tag and create subsets for further processing.
- Generate real-time reports: dashboard and timeline graphs, file type and filter summaries, plus text, exception and language reports, and more.

The “sneak preview” you gain with LexisNexis Early Data Analyzer can significantly reduce the amount of data that needs to be stored, processed and ultimately reviewed—translating into cost savings.

After you finish pre-processing with Early Data Analyzer, you can easily load the smaller data set into **LAW PreDiscovery** software for native and full-text extraction.



LexisNexis Early Data Analyzer filters content in a variety of ways—in this case, by email sender domain.

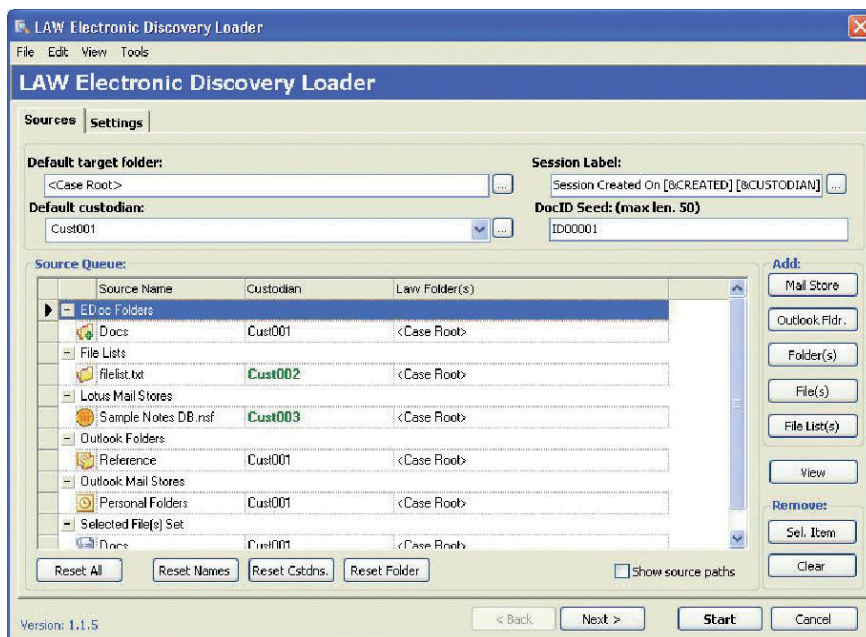
Step 2: Further process data and cull unresponsive documents

If you started your process with Step 1 using LexisNexis Early Data Analyzer, by now you have already set up a case and sent your data to LAW PreDiscovery.

If not, just create a new case in LAW PreDiscovery software, and you're ready to scan paper documents or import image files, native electronic files, mail stores and text from any media such as CDs, DVDs and hard drives—with ease.

You have likely received dozens or even hundreds of banker boxes with paper, CDs, DVDs and other electronic media. With support for hundreds of scanners and more than 4,200 electronic native file types, LAW PreDiscovery helps you scan, import and process documents to determine exactly what you have and bring your document set down to size.

Next, from a single, simple-to-use interface, you can extract digital text and metadata from electronic files and perform additional deduplication (by case or custodian) to ensure you won't review and produce more documents than needed.

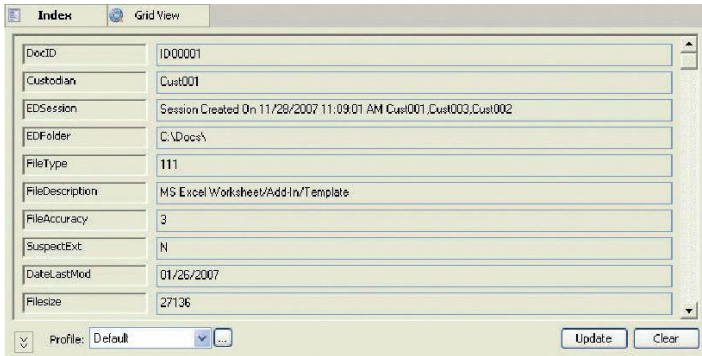


Load documents into LAW PreDiscovery for processing. The software provides more than 100 electronic data loader settings for the most complex projects.

Step 3: Manage your e-discovery

You can eliminate data you know is irrelevant using DT Search features—which help save space, time and money.

LAW PreDiscovery also enables you to cull by keyword, file type, dates and de-NISTING; deduplicate by searching multiple fields; and unitize or doc-break large PDFs to meet your specific needs.



LAW PreDiscovery makes it simple to search, filter and tag files. Enhanced filtering capabilities allow for faster, more effective searching and culling.

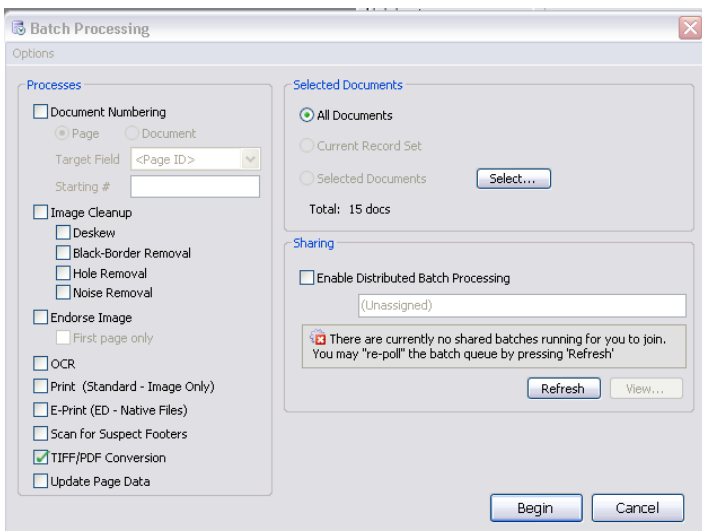
Step 4: Perform batch processing

In LAW PreDiscovery, you can perform batch processes such as document numbering, endorsing, optical character recognition (OCR), printing, creating searchable PDFs and TIFF conversion to streamline processing and optimize your resources.

You can also use LAW PreDiscovery software to endorse Bates numbers and perform optical character recognition (OCR) of image-based files.

For production-level processing, LAW PreDiscovery enables you to endorse across six sections of each document; pull fielded information; change font size and style; view endorsements right away; and undo any mistakes. LAW PreDiscovery batch-endorses at 10,000-plus pages an hour.

After processing, LAW PreDiscovery creates a Concordance database or load file on the fly. You can also easily export to any current litigation review tool to meet the specific needs of opposing counsel, expert witnesses and other parties.



Once you've selected your document set, LAW PreDiscovery quickly converts documents to TIFF.

Step 5: Review documents in Concordance software

Make the most of outstanding review features

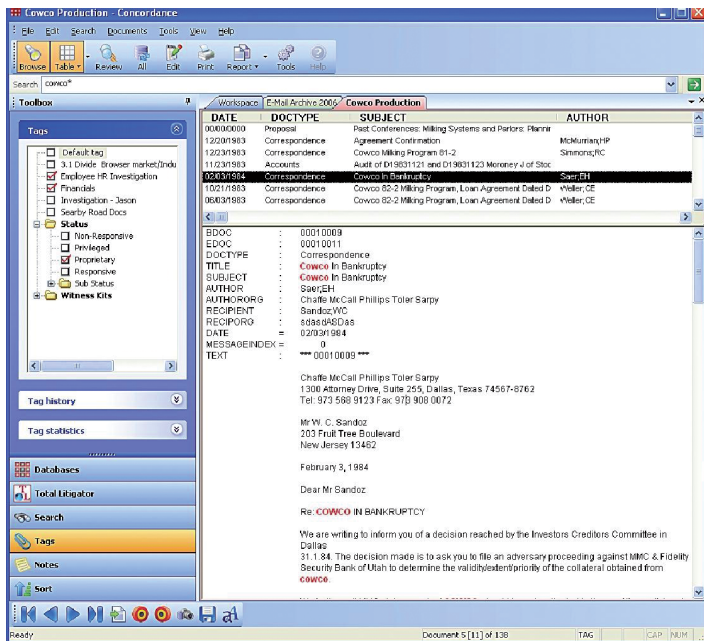
From LAW PreDiscovery, you can generate files to load into **Concordance discovery management software**. Then, with your refined document set in Concordance, you have outstanding capabilities for searching, tagging, redacting (image, text and search), enhanced review, production and reporting.

You can use Concordance to perform full-text searching with folder/tag hierarchy and concatenate and search across databases, if desired. You also benefit from native file review capabilities and Concordance Programming Language (CPL), which enable you to enhance review functionality.

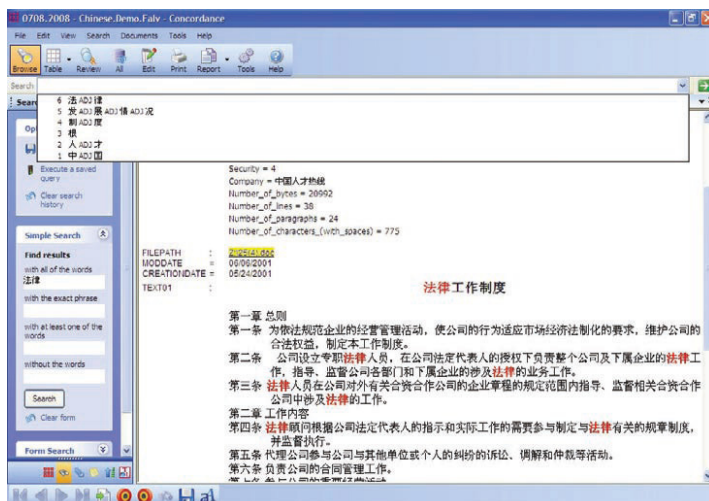
Conduct review via the Web to accommodate additional parties

When multiple parties are working on your case, **Concordance® FYI™** helps you collaborate in real time to find facts and analyze with precision. It's designed to go beyond the desktop and onto the Web, giving you control and flexibility to grant access to a document reviewer or an expert as needed.

Widely used and recognized across agencies, Concordance FYI also enables you to coordinate effectively with the Department of Justice.



Massive Concordance database capacity and a highly intuitive interface enable reviewers to quickly and easily find critical case documents, annotate and redact as needed, and finally produce either TIFF or PDF files.



You can manage discovery documents in a variety of languages using Unicode™ foreign character language support within Concordance.

Gain optimal benefits from complementary tools

As you make decisions during document processing and review, it's helpful to know which capabilities come with Concordance and which come with LAW PreDiscovery. Here's an overview.

Data Processing	Concordance	LAW PreDiscovery
Import native files	✓	✓
Import/view over 4,400 file types		✓
Perform optical character recognition (OCR) on files with no full text		✓
Conduct full-text extraction from native	✓	✓
Cull by keyword, dates, de-NISTing		✓
Deduplicate by searching multiple fields	✓	✓
Deduplicate using SHA1 or MD5 hash		✓
Handle embedded files	✓	✓
Handle suspect extensions		✓
Batch-process using multiple machines		✓
Include branding/endorsements	✓	✓
Reconstitute PST		✓
Change native file source application		✓
View embedded images		✓
Deduplicate across multiple cases		✓
Load file imports (Doculex, Summation, Optical, EDRM XML, IPRO)		✓
Perform scanning		✓
Get enhanced reporting		✓
Export to 25 different litigation databases		✓
Use document numbering		✓
Perform TIFF conversion		✓
PDF Production	✓	✓
Color Production	✓	✓
Process multiple file types simultaneously (e-documents, email, TIFF files, etc.)		✓
LexisNexis Early Data Analyzer Integration	✓*	✓

*Through a DAT file import

Gain optimal benefits from complementary tools (con't)

Review Features	Concordance	LAW PreDiscovery
Full-text searching	✓	✓
Folder/tag hierarchy for searching	✓	
Tagging ability	✓	
Image redaction	✓	✓
Image redaction text	✓	
Image highlighting	✓	✓
Image sticky notes	✓	
Native file review through links	✓	✓
Native file review through native viewer	✓	
Fuzzy searching—word dictionary	✓	
Ability to concatenate and search across multiple databases	✓	
Tag history and statistics	✓	
User and database security	✓	
Boolean searching	✓	✓
Form search—Boolean query constructor	✓	✓
Ability to review with dual monitors (42 percent faster)	✓	
User tracking	✓	✓
Concordance Programming Language (CPL) programs to enhance review	✓	
“Send to CaseMap®” integration	✓	
Replication	✓	
Synchronizing	✓	
Ability to use across a wide-area network/WAN (using a DAT file import)	✓	
Transcripts review	✓	
Integration with external image viewers	✓	
Audit trails	✓	
Simple Search	✓	
Issue tagging	✓	
Search redactions (using Concordance® Image)	✓	

Other Advantages	Concordance	LAW PreDiscovery
No local install needed	✓	
Supports SQL Server® and SQL Express		✓
Has user-familiar interface (Microsoft® Outlook®)	✓	
Provides customizable workspace Start Page	✓	

Experience all three software tools together for FREE[†]

Find out how easy it can be to take control of discovery.

Download free trial software:

LexisNexis Early Data Analyzer and LAW PreDiscovery:

<http://www.lexisnexis.com/law-downloads>

Concordance discovery management software:

<http://www.lexisnexis.com/concordance-downloads>

Satisfaction Guaranteed

LexisNexis Early Data Analyzer, LAW PreDiscovery and Concordance are backed by a no-risk, 15-day, money-back guarantee. Try them on your next case. If they are not the best software for your organization, we'll refund your money.

For more information about LexisNexis Early Data Analyzer or LAW PreDiscovery:

For more information about Concordance:

[†]Concordance trial software subscription is valid for 30 consecutive days after downloading the Concordance software for use. The LAW PreDiscovery and LexisNexis Early Data Analyzer trial software subscriptions are valid to use 30 times after downloading the software for use. Offer limited to one software download, per software, per person. Void where prohibited. Other restrictions may apply.

To order software or request additional product and licensing information, use the contact information in the box above or visit us online at www.lexisnexis.com/litigation-lawprecovery.



LexisNexis[®]

LexisNexis and the Knowledge Burst logo are registered trademarks of Reed Elsevier Properties Inc., used under license. Concordance and CaseMap are registered trademarks and FYI and PreDiscovery are trademarks of LexisNexis, a division of Reed Elsevier Inc. Other products or services may be trademarks or registered trademarks of their respective companies. © 2013 LexisNexis. All rights reserved BLT00377-0 0513