

# Fluvial Geomorphology and River Management

Brian Cluer, Ph.D.  
NOAA Fisheries

Lagunitas Creek Technical Advisory  
Committee

March 16, 2018

# Goals for the talk:

- Stream Evolution Model and the Stage 0 concept
  - origin and context
- Attributes of Stage 0 streams
  - and why we need them
- Some examples of Stage 0 restoration

## A STREAM EVOLUTION MODEL INTEGRATING HABITAT AND ECOSYSTEM BENEFITS

B. CLUER<sup>a\*</sup> and C. THORNE<sup>b</sup>

<sup>a</sup> *Fluvial Geomorphologist, Southwest Region, NOAA's National Marine Fisheries Service, Santa Rosa, California, USA*

<sup>b</sup> *Chair of Physical Geography, University of Nottingham, Nottingham, UK*

### ABSTRACT

For decades, Channel Evolution Models have provided useful templates for understanding morphological responses to disturbance associated with lowering base level, channelization or alterations to the flow and/or sediment regimes. In this paper, two well-established Channel Evolution Models are revisited and updated in light of recent research and practical experience. The proposed Stream Evolution Model includes a precursor stage, which recognizes that streams may naturally be multi-threaded prior to disturbance, and represents stream evolution as a cyclical, rather than linear, phenomenon, recognizing an *evolutionary cycle* within which streams advance through the common sequence, skip some stages entirely, recover to a previous stage or even repeat parts of the evolutionary cycle.

The hydrologic, hydraulic, morphological and vegetative attributes of the stream during each evolutionary stage provide varying ranges and qualities of habitat and ecosystem benefits. The authors' personal experience was combined with information gleaned from recent literature to construct a fluvial habitat scoring scheme that distinguishes the relative, and substantial differences in, ecological values of different evolutionary stages. Consideration of the links between stream evolution and ecosystem services leads to improved understanding of the ecological status of contemporary, managed rivers compared with their historical, unmanaged counterparts. The potential utility of the Stream Evolution Model, with its interpretation of habitat and ecosystem benefits includes improved river management decision making with respect to future capital investment not only in aquatic, riparian and floodplain conservation and restoration but also in interventions intended to promote species recovery. Copyright © 2013 John Wiley & Sons, Ltd.

**KEY WORDS:** Stream Evolution Model (SEM); channel evolution; freshwater ecology; habitat; conservation; river management; restoration; climate resilience

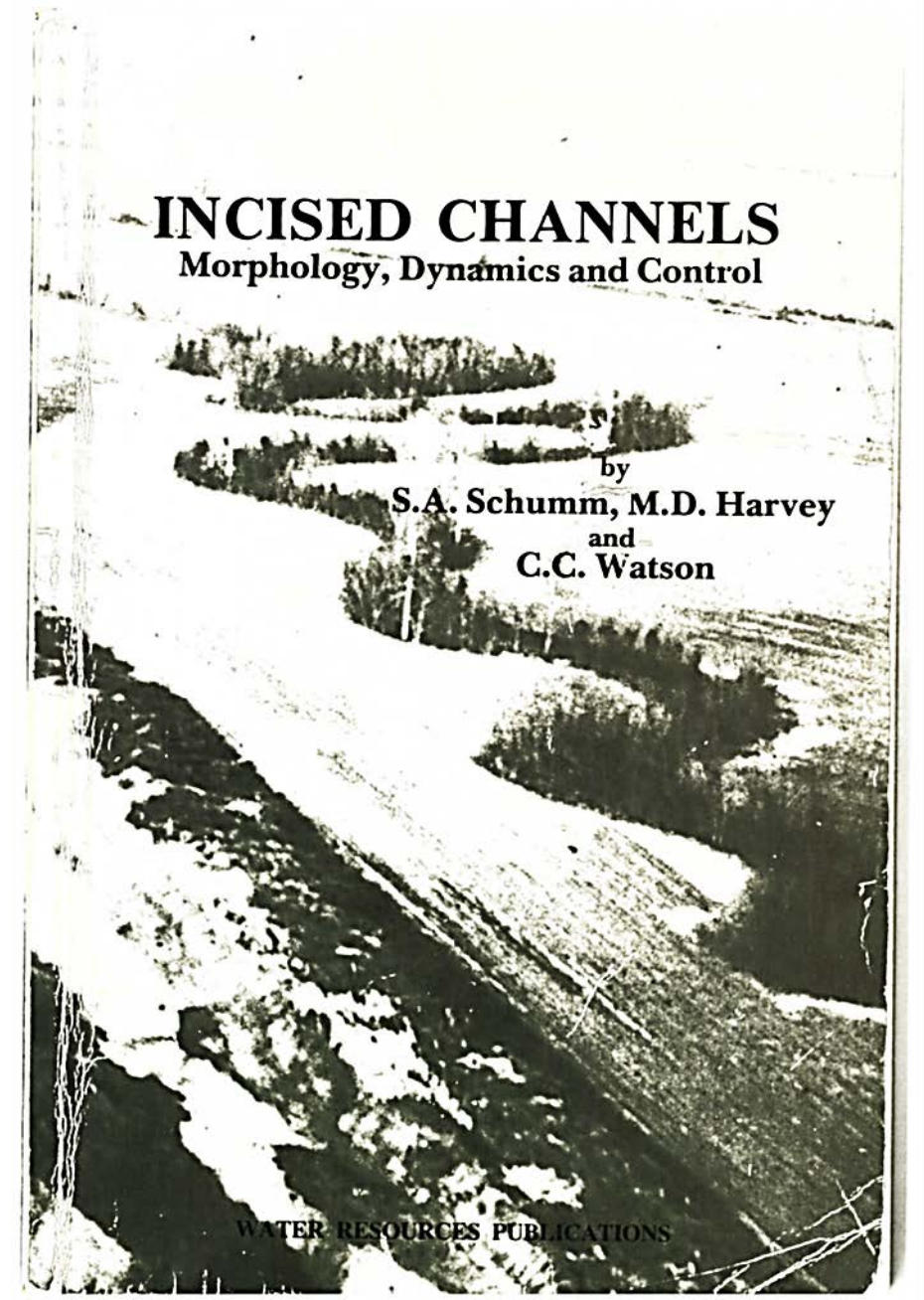
# *The Channel Evolution Model*

## ***INCISED CHANNELS***

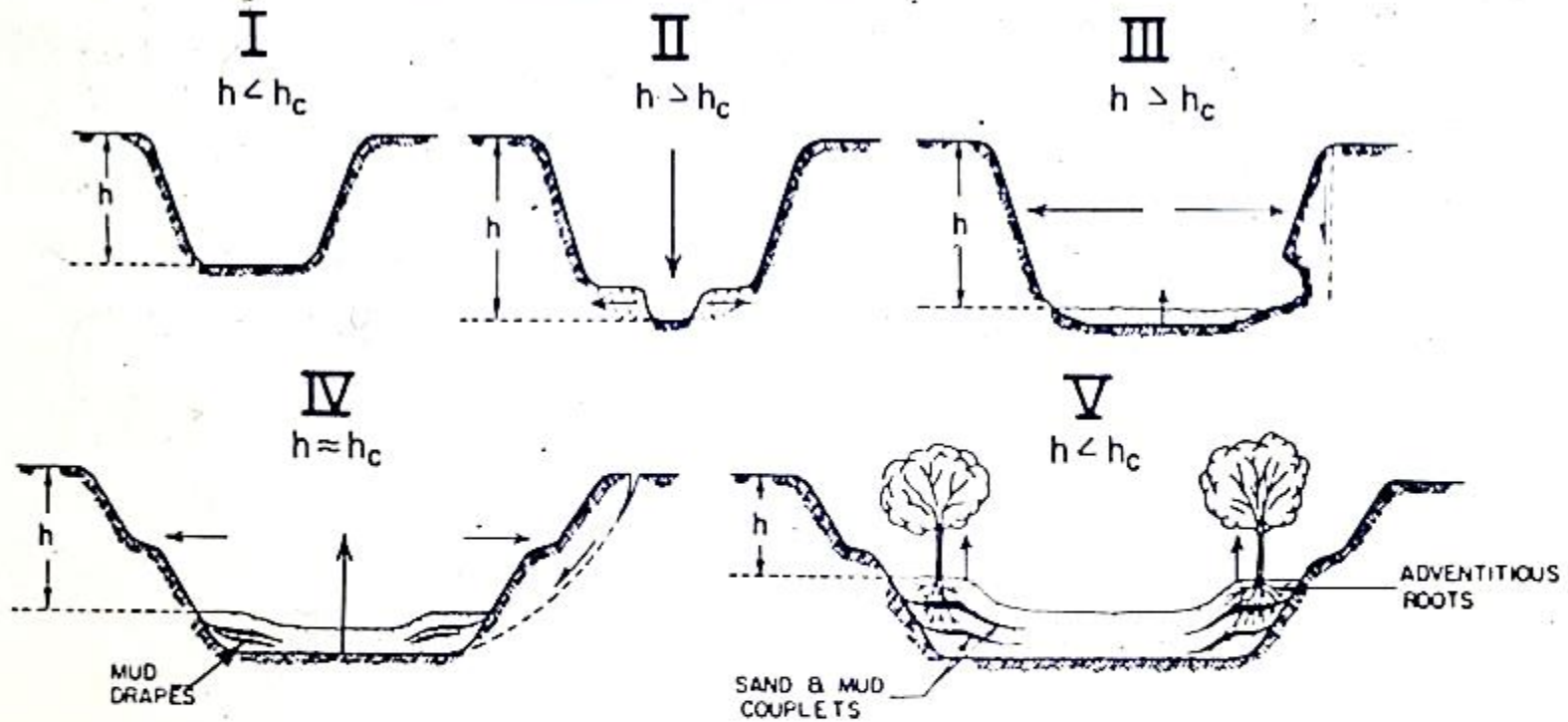
*Morphology, Dynamics, and Control*

Schumm, S. A., Harvey, M. D.  
& Watson, C. C. (1984).

Water Resources  
Publications,  
Littleton, Colorado.

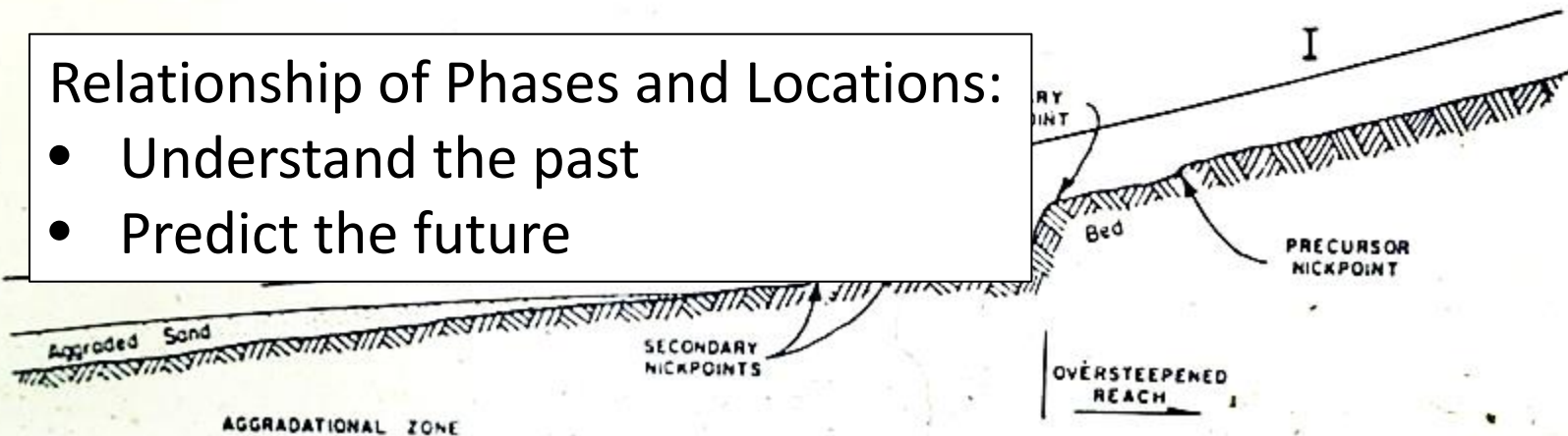


## Channel Evolution Phases



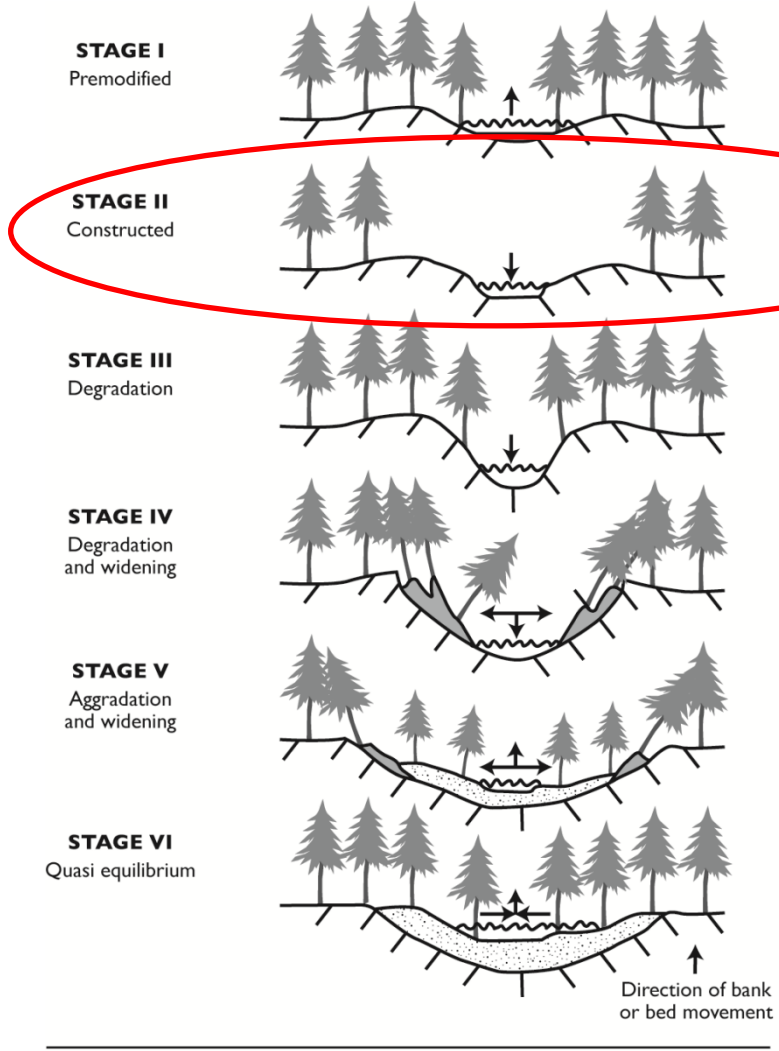
### Relationship of Phases and Locations:

- Understand the past
- Predict the future

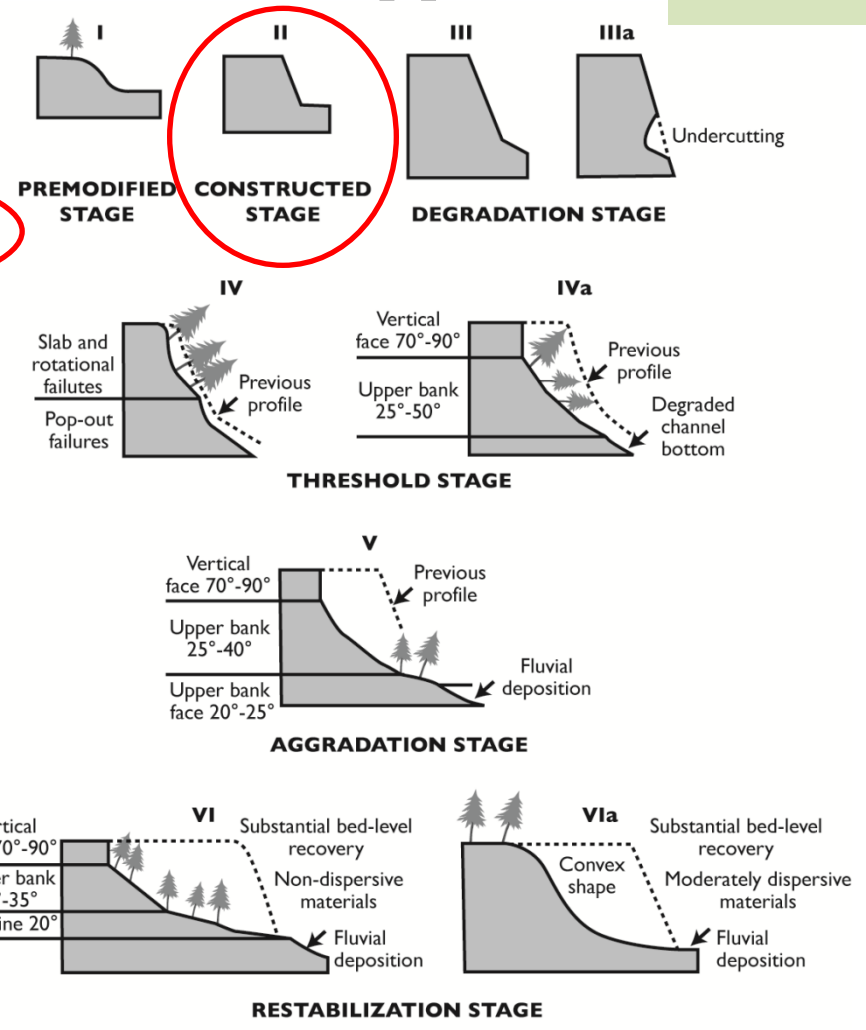


# Andrew Simon and Cliff Hupp

1986



- Water
- Slumped material
- Accreted material



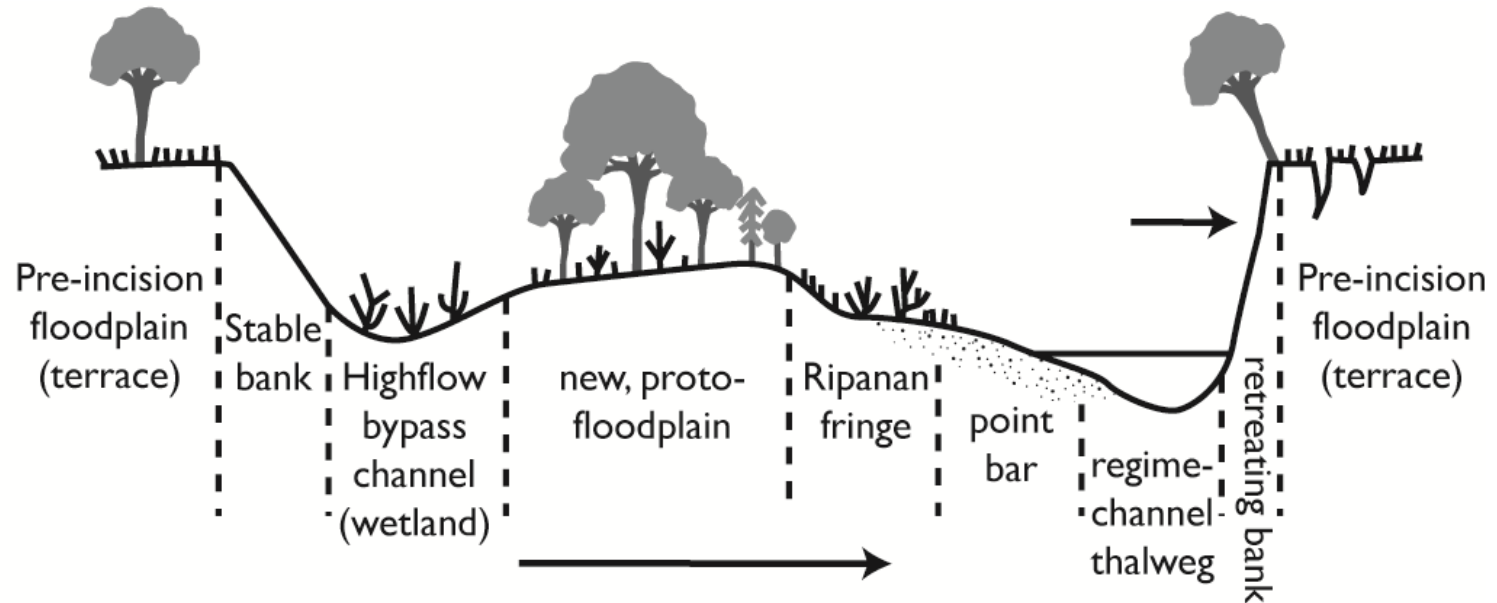
Scale is relative

Late-stage Evolution in Senatobia  
Creek, Mississippi  
Straight channel begins to meander

***Colin Thorne 1990s***



# Late-Stage Evolution



## Stage 7 "Laterally Active"

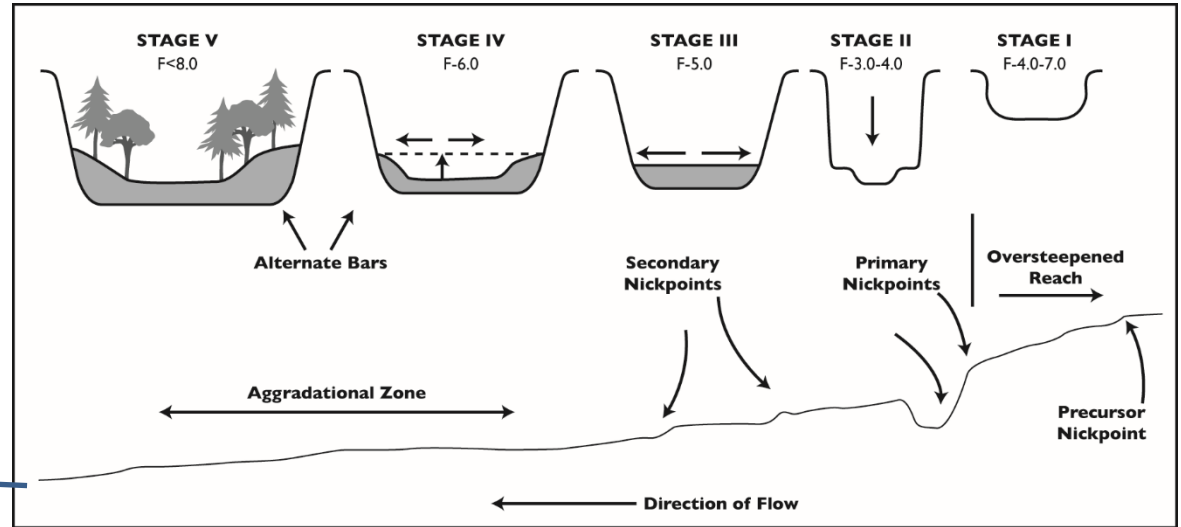
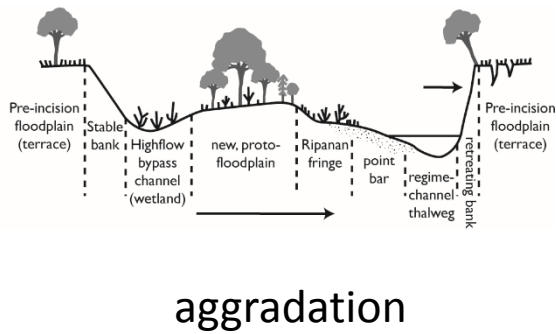
Thorne proposed, add a Stage to CEM:

Stage VI (Schumm, Harvey and Watson)

Stage VII (Simon and Hupp).



# Can the CEM be extended further?



US Swamp Land Act of 1850 essentially provided a mechanism for reverting title of federally owned swampland to states



Eel River, CA

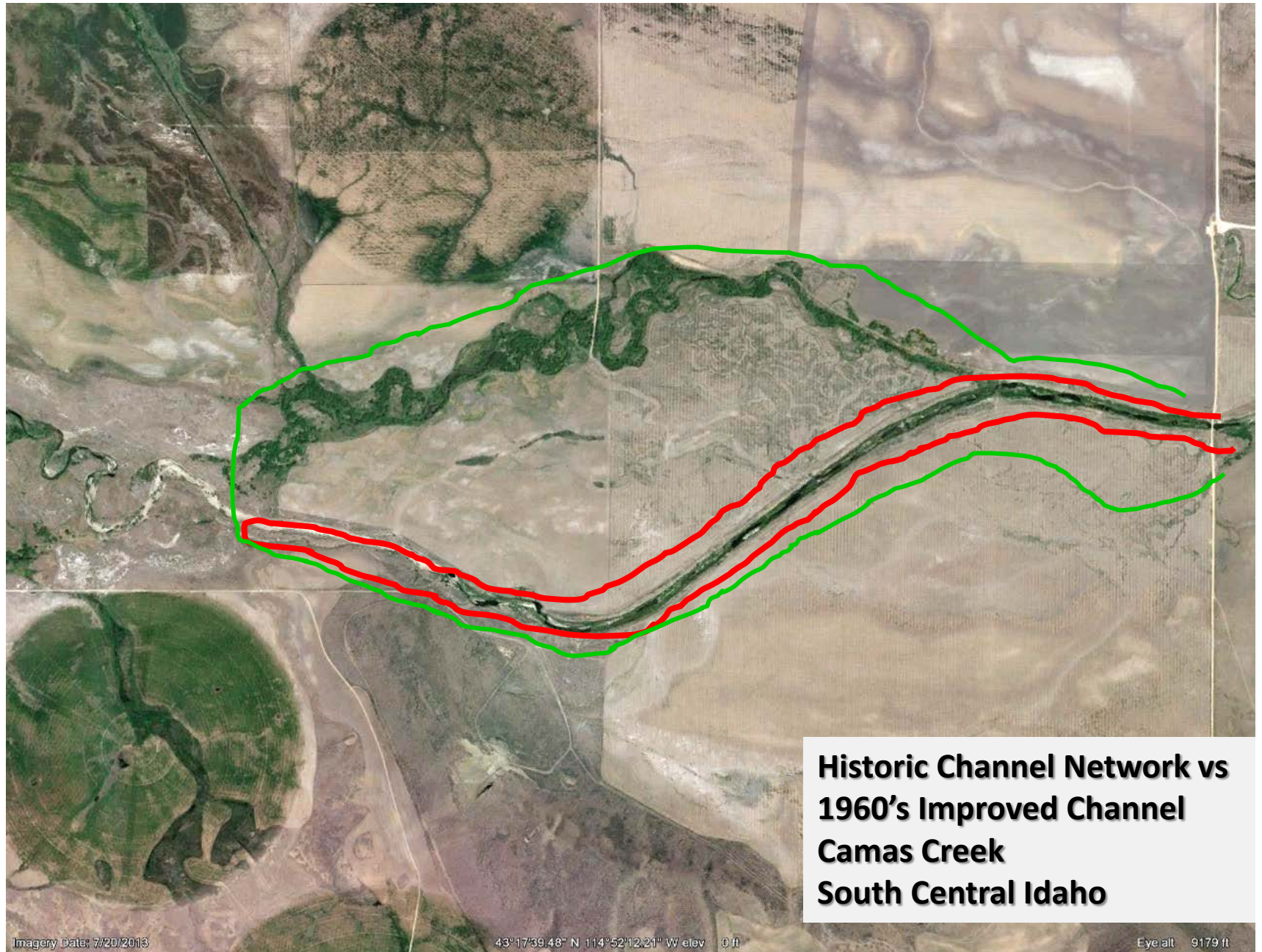
Era of draining floodplains, and building defenses from floods.

LaGrand River, OR

North Central Nevada

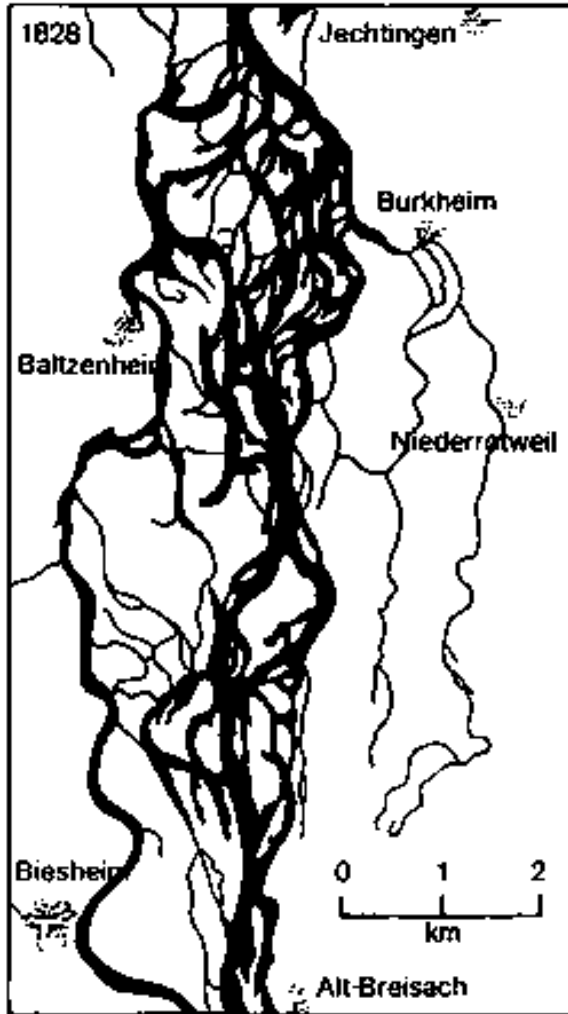
Edge of Arable Land



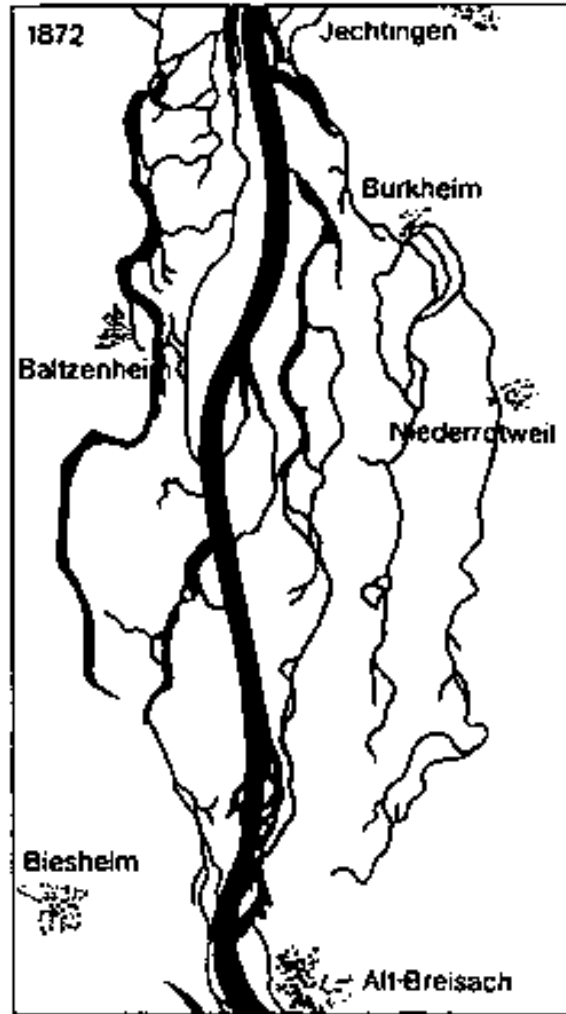


**Historic Channel Network vs  
1960's Improved Channel  
Camas Creek  
South Central Idaho**

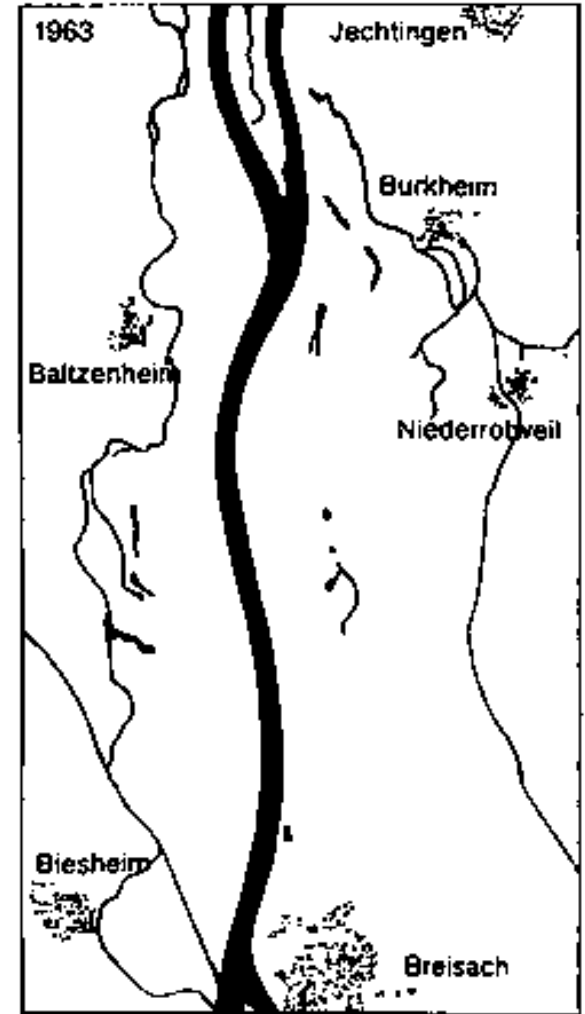
# Example from Europe - Upper River Rhine at Breisach Germany



Anastomosed  
1828 – Prior to  
river training



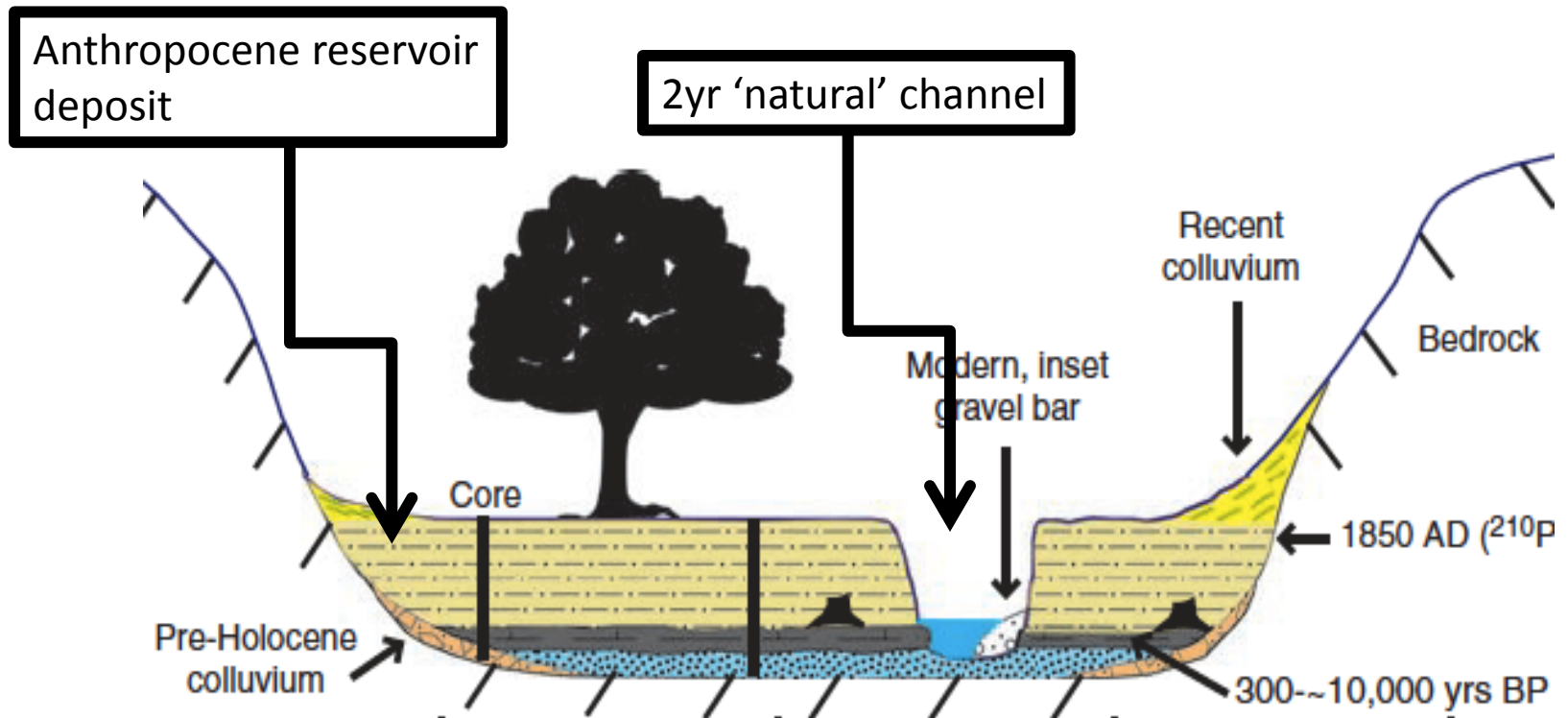
Anabranching  
1872 – after re-alignment  
by Johann Gottfried Tulla



Meandering  
1963 – fully canalised  
single-thread

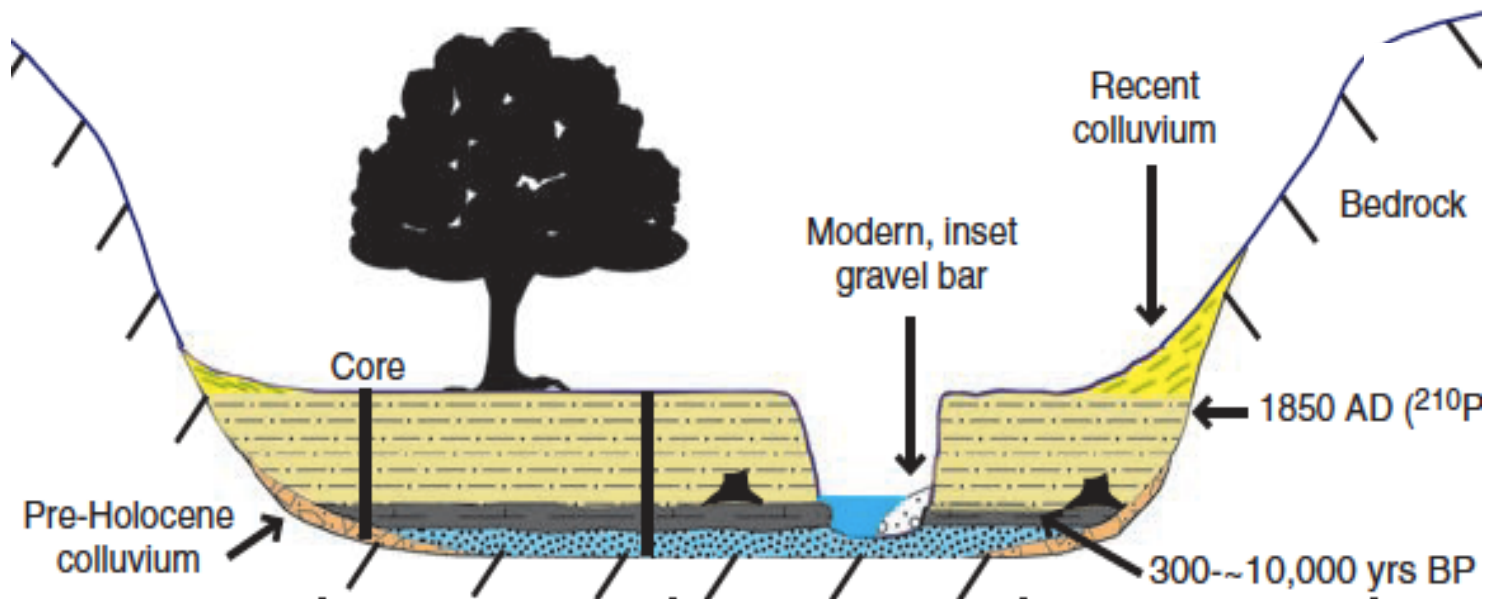
- Historic reconstructions:
  - Grossinger et al in California
  - Walter and Merritts in Mid-Atlantic
  - Brown and Sear in UK
  - many others
- Observations:
  - Willow Creek
  - Family farm
  - many others

# Walter and Merritts: 2008



*Eastern Seaboard Province: “...before European settlement, the streams were small anabranching channels within extensive vegetated wetlands”*

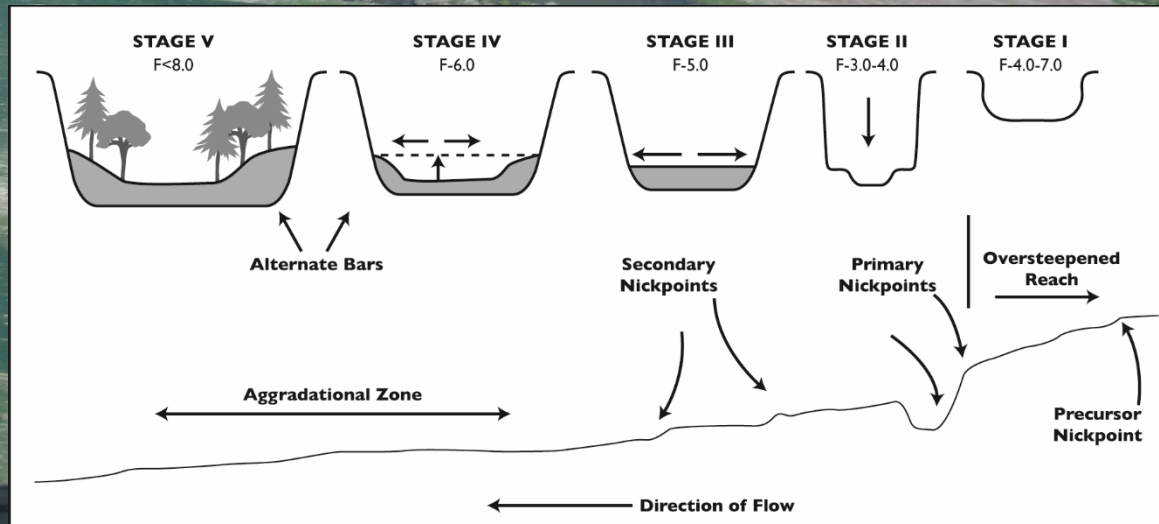
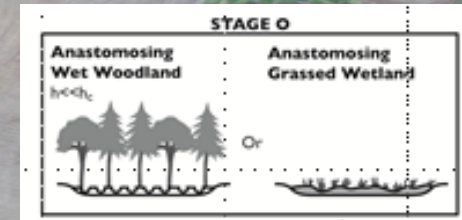
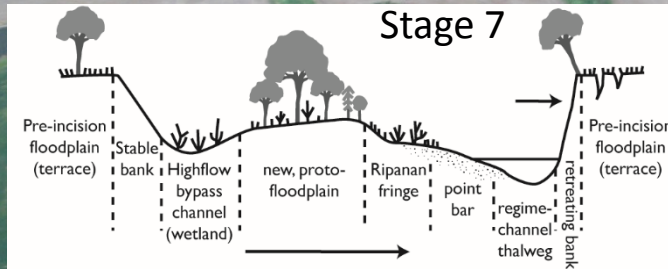
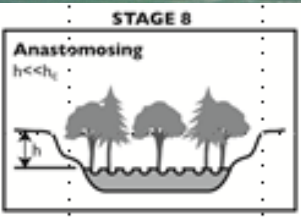
Walter and Merritts challenge meandering gravel-bed channels and 2-year Bankfull Return Periods as restoration targets. They conclude: the single-thread, bankfull, or equilibrium channel is common for anthropogenic reasons, not the ideal, not a good reference for design.



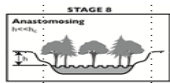


# Cluer and Thorne 2013

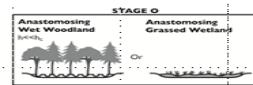
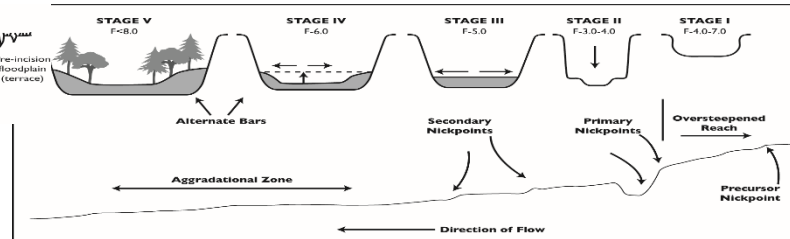
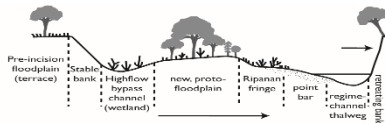
- Extended CEM to incorporate successor and precursor stages



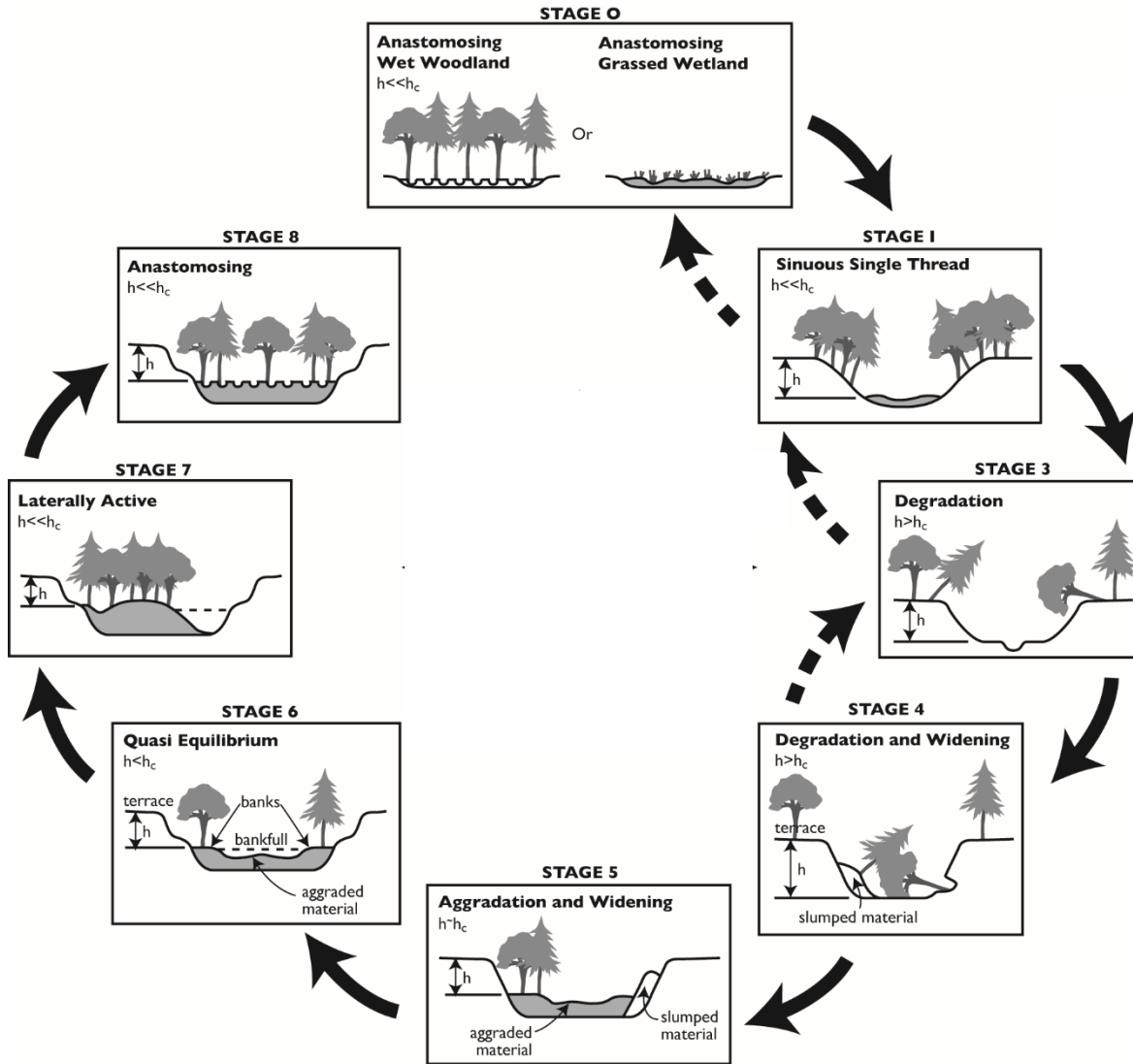
# Geomorphic Template



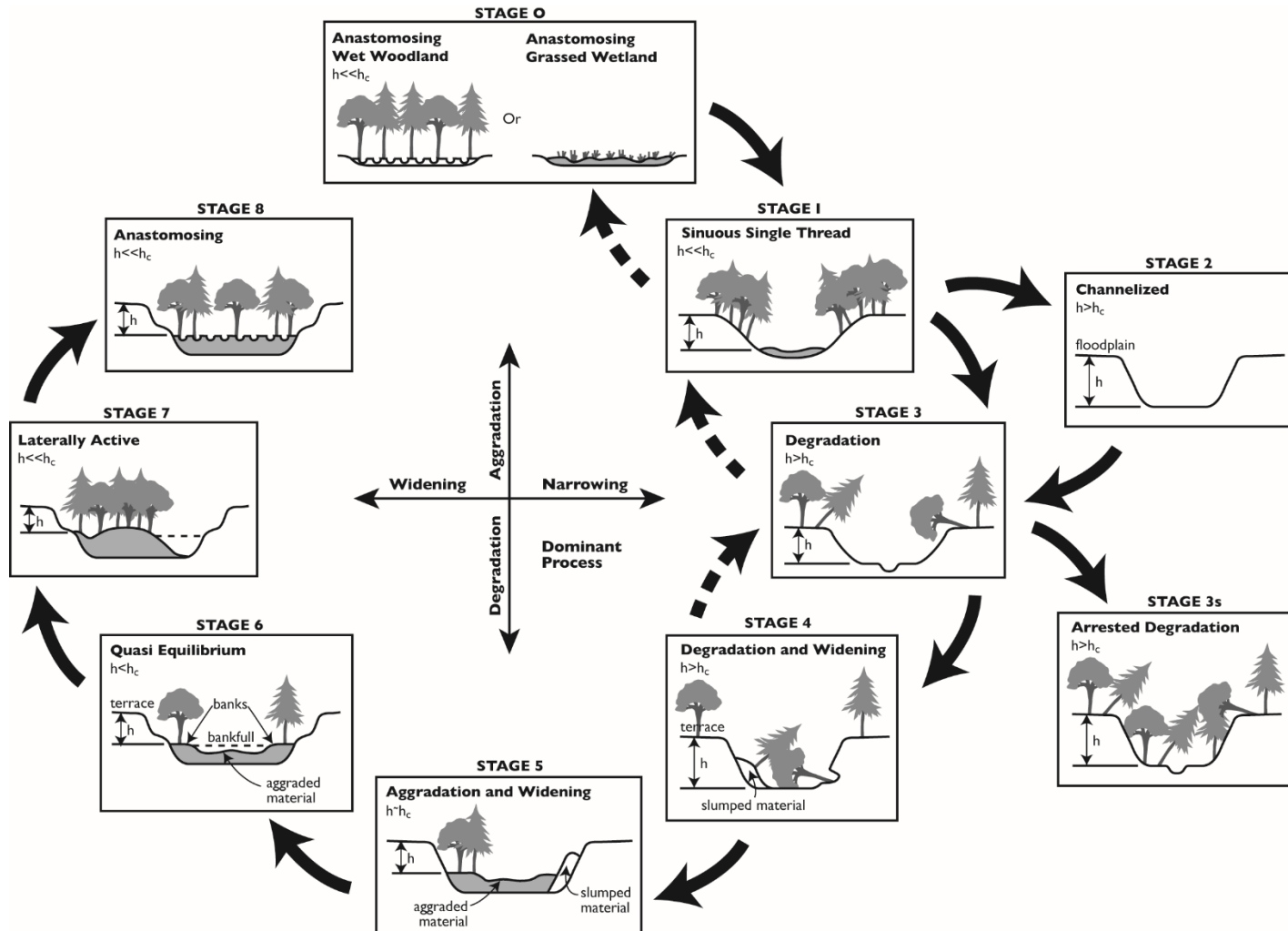
**Late Stage/Evolution**  
Incised channel  
[Stage VI Watson et al. (1986),  
Stage VII Simon and Hupp (1986)]  
Morphological Feature



# Geomorphic Template



# SEM, derived from CEM



## Part 2

# Principles of functional ecology link habitat and ecosystem benefits to each SEM Stage.

- The potential for a stream to support rich, resilient and diverse ecosystems increases with morphological diversity, scale and hydroperiod.

# Literature: attributes and benefits

- Hydrogeomorphic attributes (26)
  - Number and dimensions, channel
  - Hydrologic regime, floodplain
  - Hydraulic complexity
  - Channel and floodplain features
  - Substrate – sorting/patchiness
  - Vegetation – sediment interaction
- Habitat and Ecosystem Benefit attributes (11)
  - Refugia in extremes – flood/drought
  - Water quality – clarity/temperature/nutrient cycling
  - Biota – diversity/natives/1<sup>o</sup> & 2<sup>o</sup> productivity
  - Resilience to disturbance

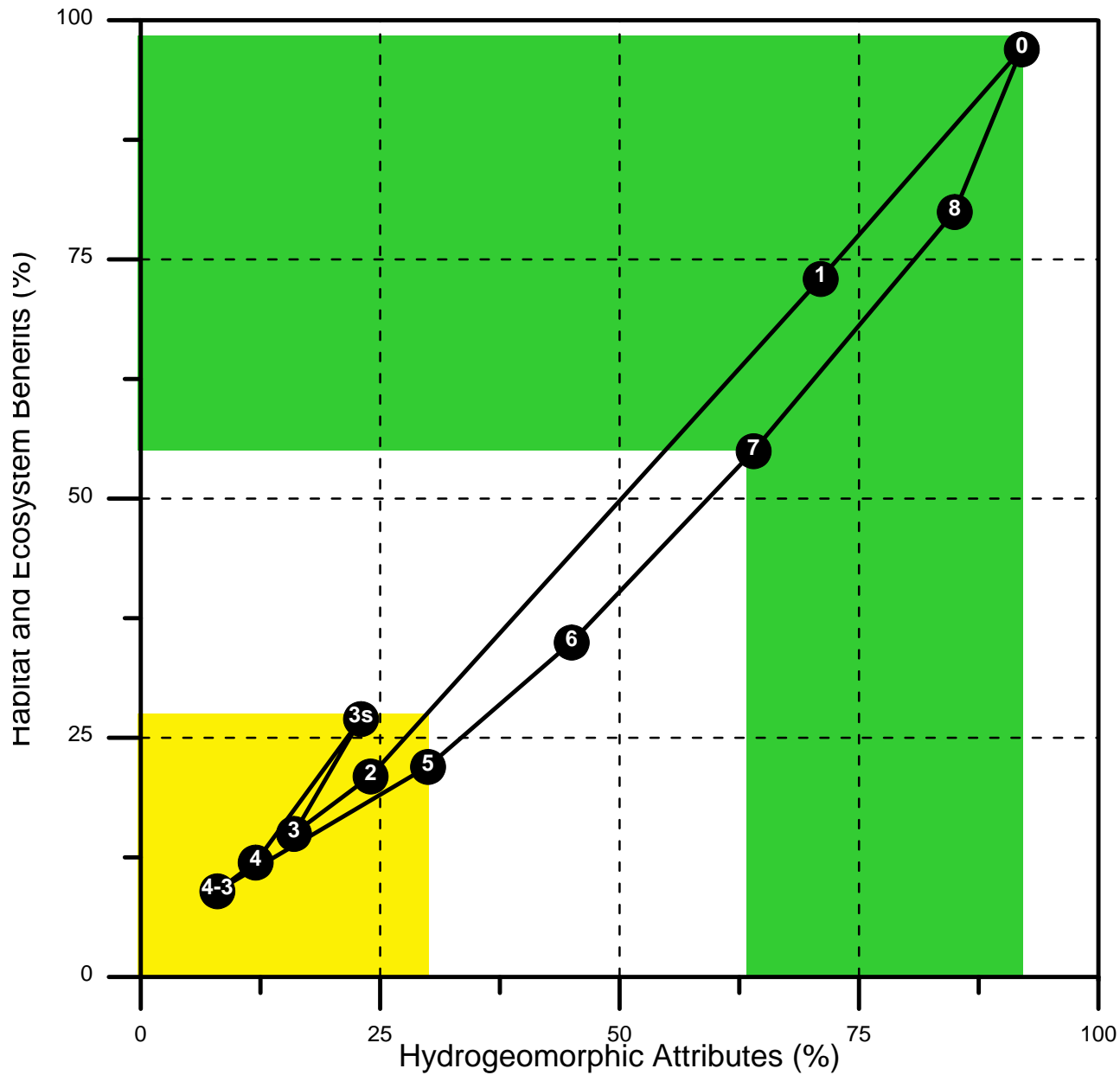
## Ordinal Score:

0 = absent

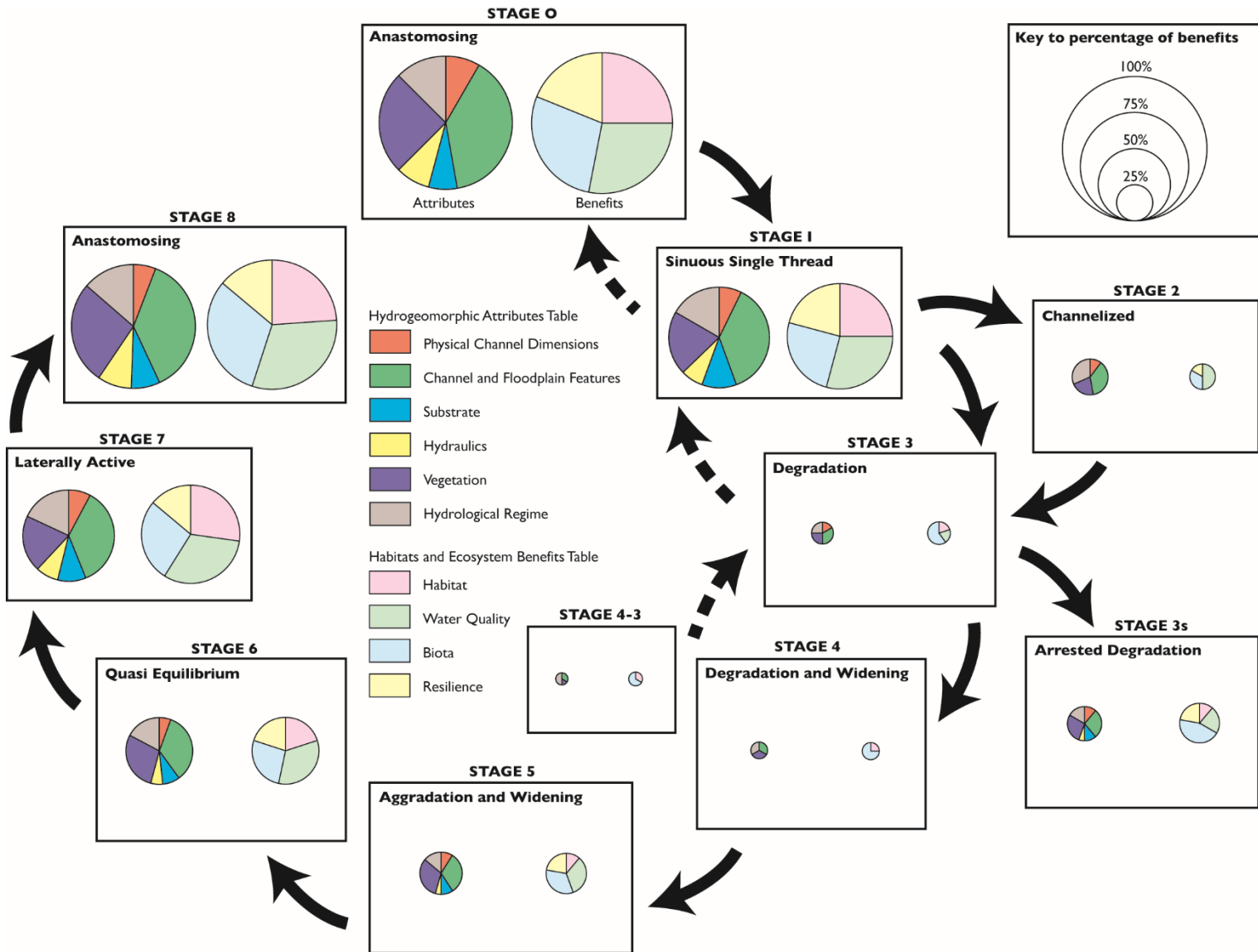
1 = scarce/partly functional

2 = present and functional

3 = abundant/fully functional



# Ecosystem overlay



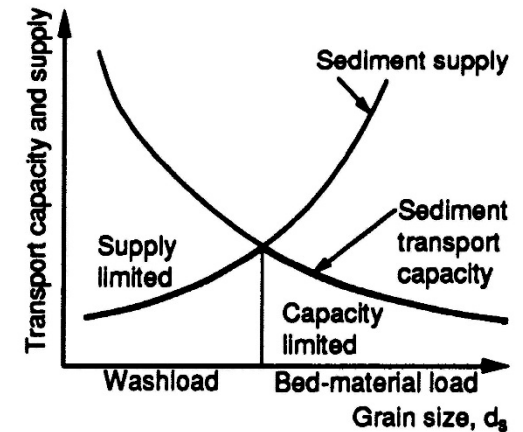


What Distinguishes Stage 0 ?  
&  
What Ecosystem Services Does  
Stage 0 Deliver ?

# PHYSICAL:

## 1. DEPOSITION ZONES

- Transport capacity limited.
- When mature, supply and capacity may balance, with strong particle exchange and sorting.



### Sediment supply zone:

Weathering and erosion of steep slopes. Multiple tributaries collect sediment and supply it to the mainstem. Forced settings have single thread channels. Intermittent mountain meadows and valleys have Stage 0-1 channels where undisturbed.

### Alluvial fan zone:

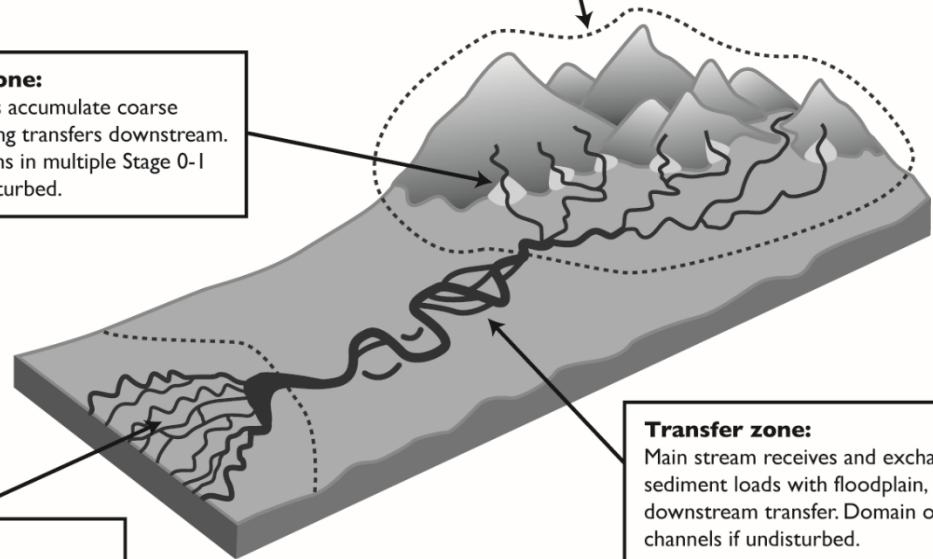
Depositional fans accumulate coarse sediment, buffering transfers downstream. Frequent avulsions in multiple Stage 0-1 channels, if undisturbed.

### Transfer zone:

Main stream receives and exchanges coarse sediment loads with floodplain, buffering downstream transfer. Domain of Stage 0-1 channels if undisturbed.

### Deposition zone:

Fine sediment is naturally deposited on floodplain/coastal plain or as a delta. Domain of Stage 0-1 channels if undisturbed.



## 2. Large accommodation space

- Maximal flood attenuation
- Maximal GW recharge
- Maximal sediment pulse attenuation
- Resilient to entire range of watershed disturbances – natural disasters



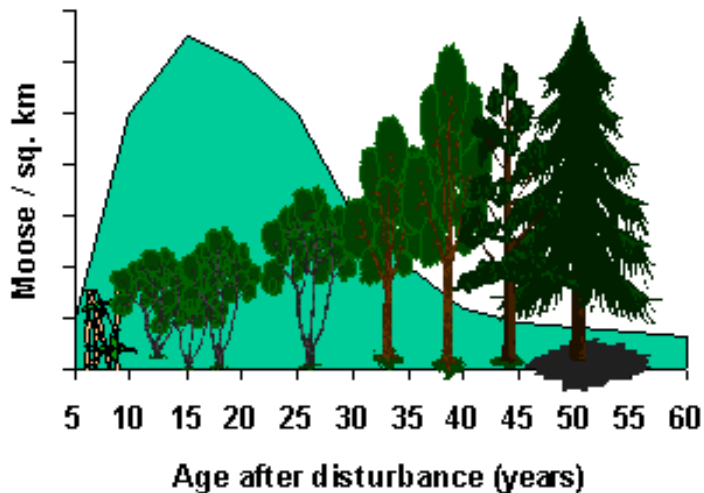
# 3. High water table

- No deep drainage channel.
- Strong stream flow and ground water connection.
- High interaction between flow, sediment, and vegetation.
- Small channels easily moderated by vegetation.



# Vegetation Attributes

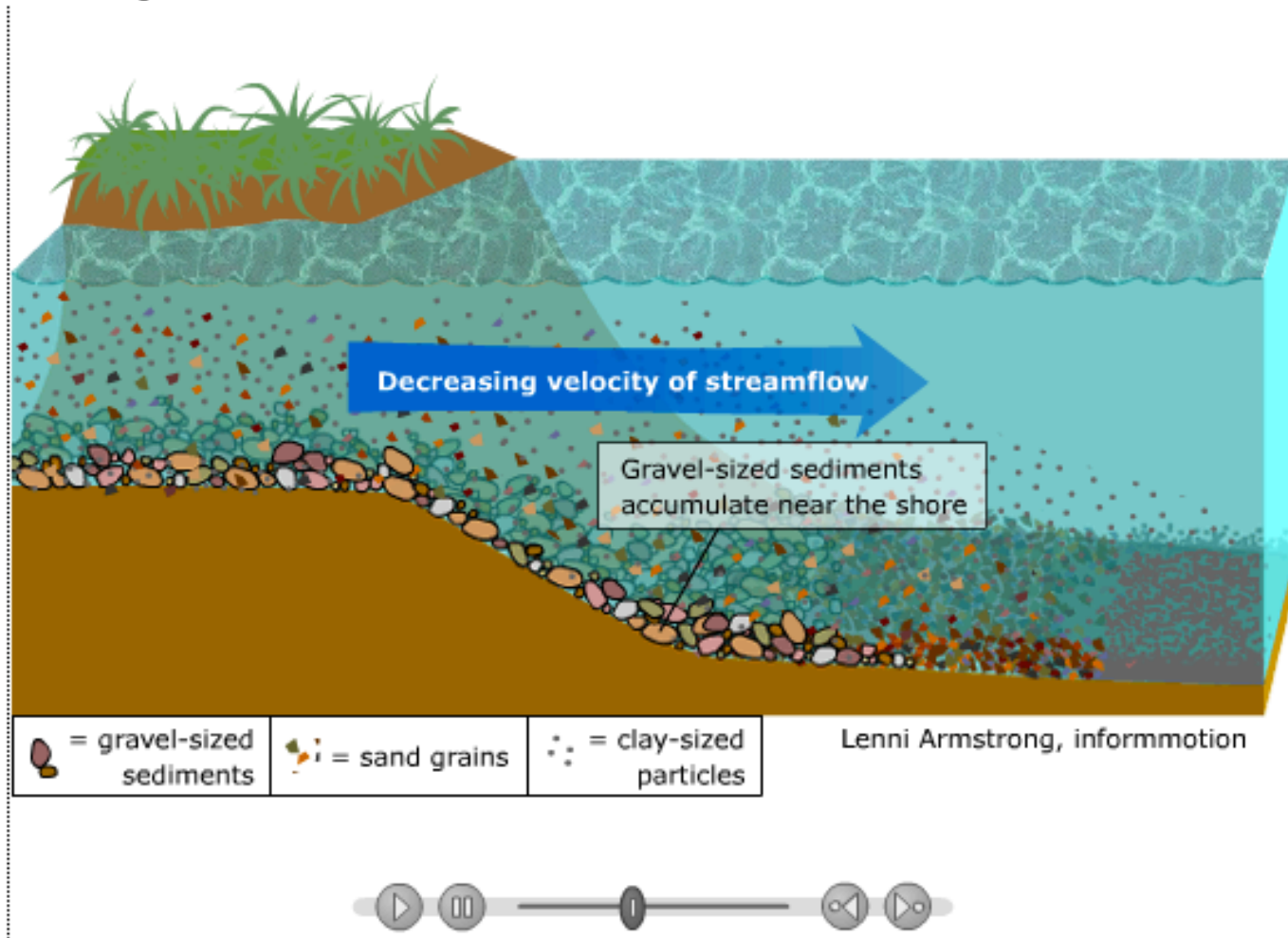
- Frequent, small channel adjustments and high, reliable water table - proliferation and succession of aquatic, emergent, riparian and floodplain plants.
- Dense vegetation interacting with and moderating physical processes.
- High wood supply and retention.
- Abundant leaf litter.





- Morphological diversity in-channel and on the extensive and fully connected floodplain.
- Anabranches create multiple, marginal deadwaters, and maximum hydraulic diversity.

- Hydraulic diversity drives numerous, well-sorted bed material patches, with resilience during floods.



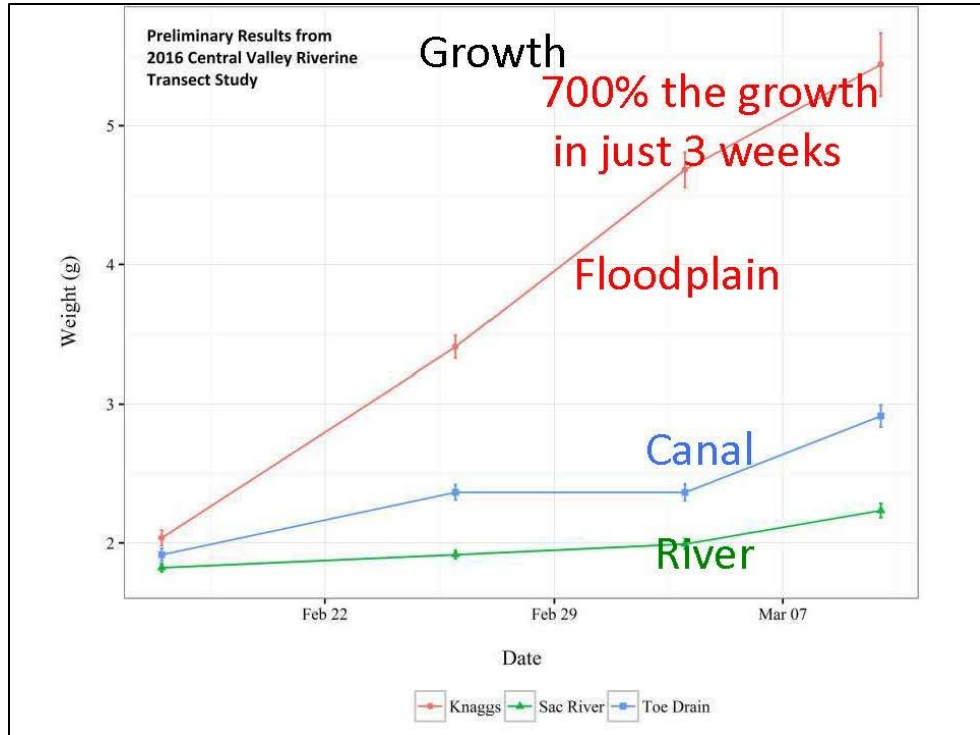
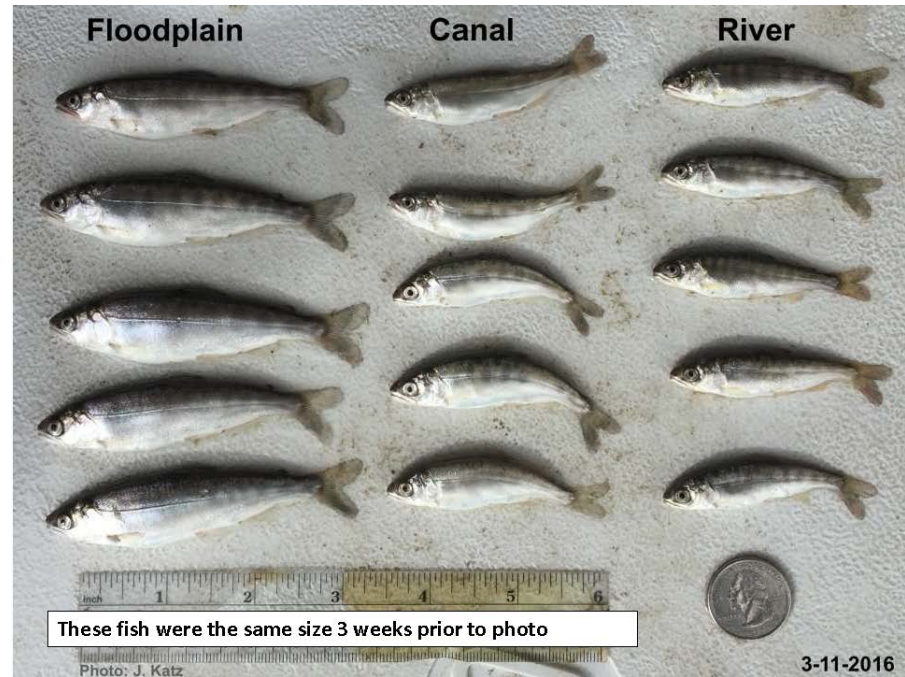
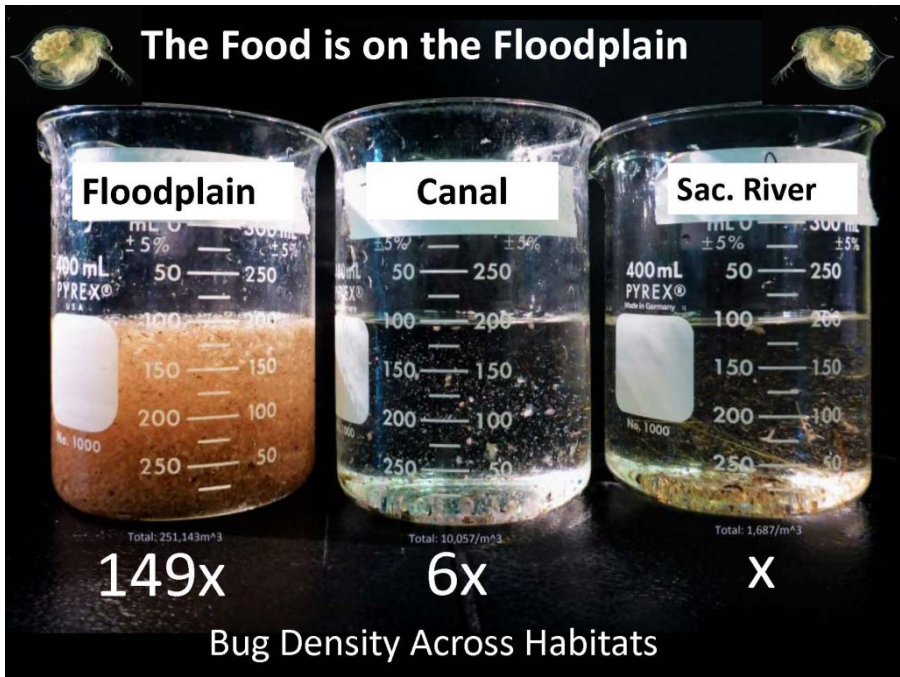
# 4. Habitat and Ecosystem Services unlike it's incised family members

- Multiple channels, islands and broad floodplain - rich palette of diverse habitats in close proximity.
- Flood refugia
- Drought refugia
- High water table and continuous hyporhesis - quickly rewets
- Channel margins evolve semi-continuously - expose tree roots.





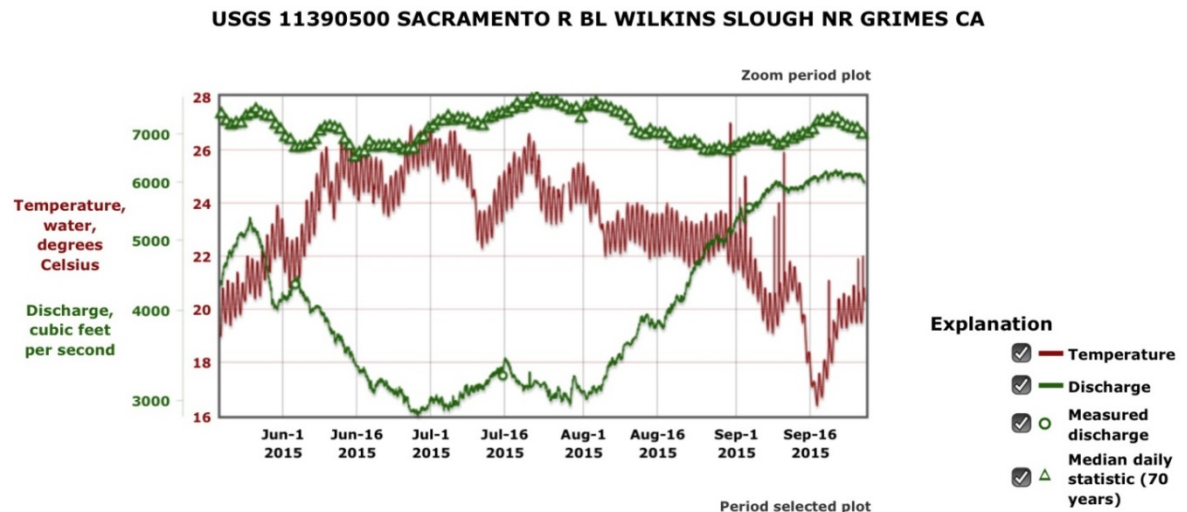




Higher growth rate  
and  
Higher abundance

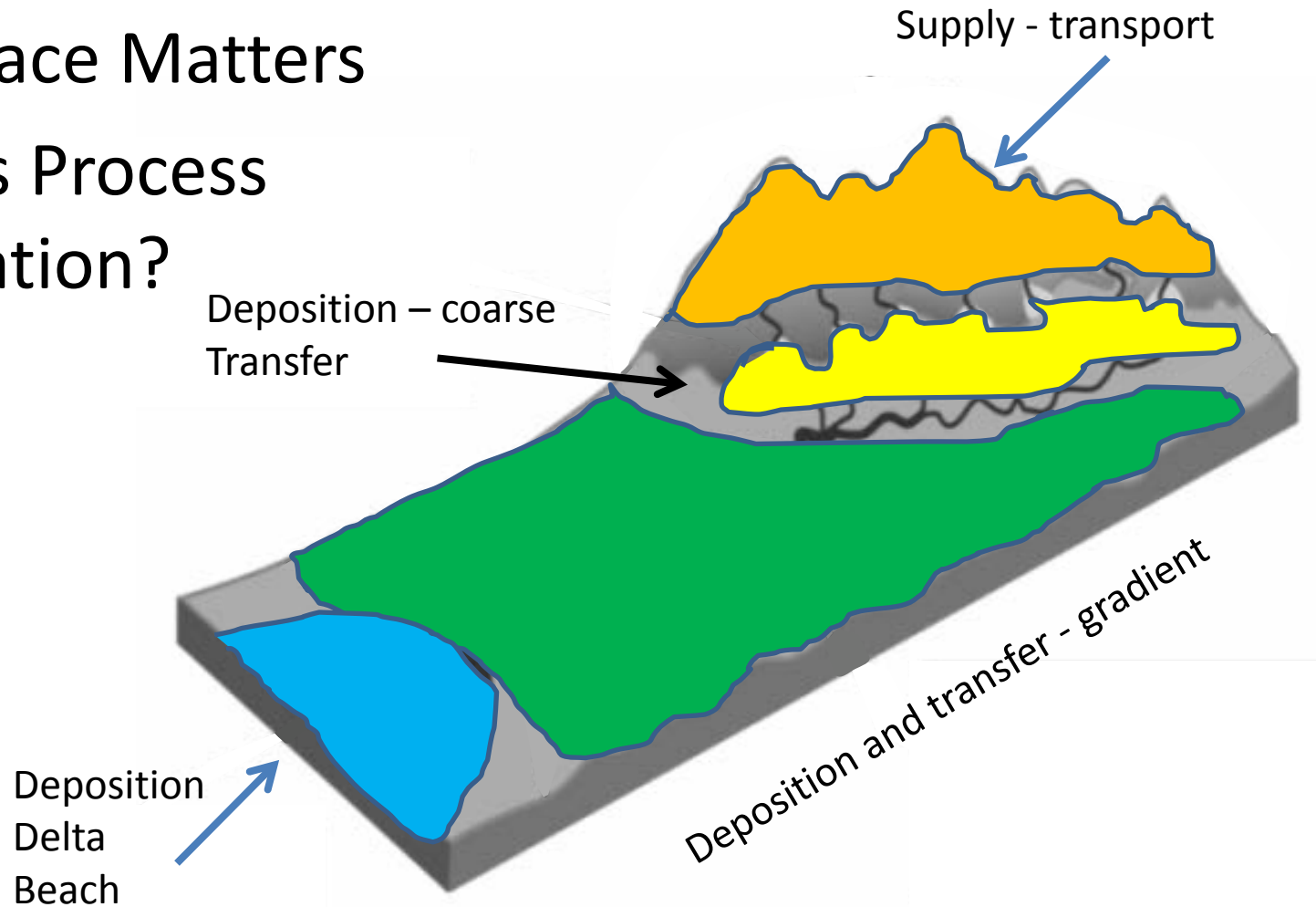
# High water quality

- Capacity to store sediment and other suspended solids.
- Cycle nutrients and dissolved solids.
- Dense, diverse vegetation - abundant shade.
- Together with efficient hyporhesis, effective in ameliorating high and low temperatures.



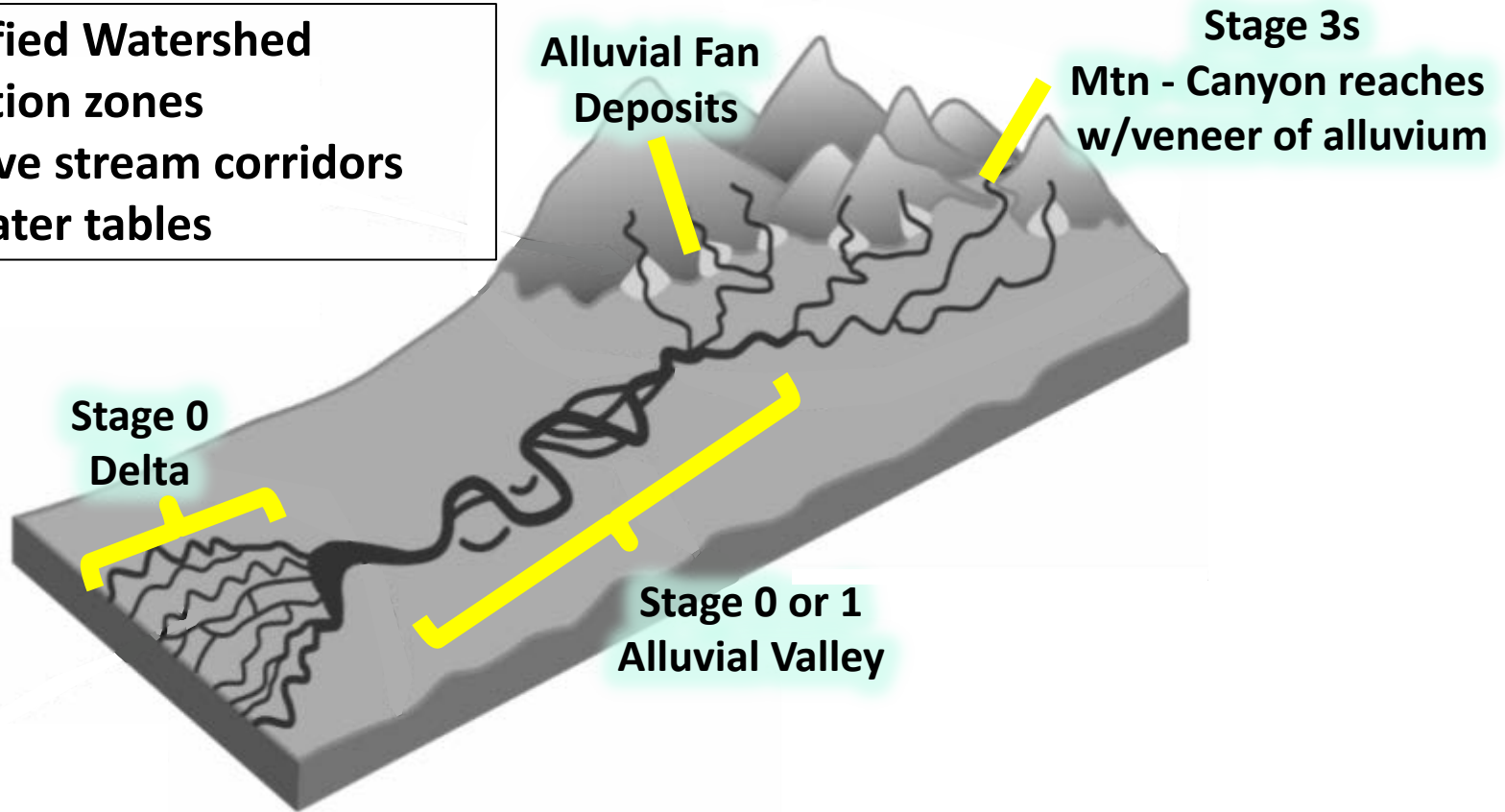
# Applying the SEM to Watershed Process Domains

- Why Place Matters
- What is Process Restoration?

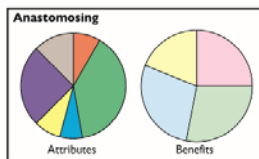
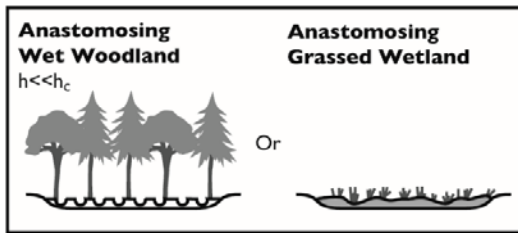


## Pre-modified Watershed

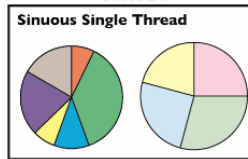
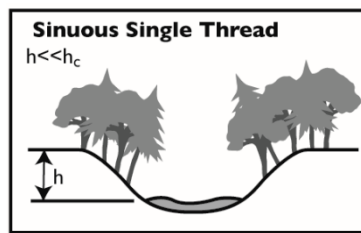
- Deposition zones
- Extensive stream corridors
- High water tables



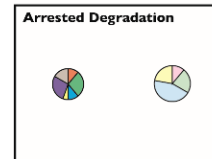
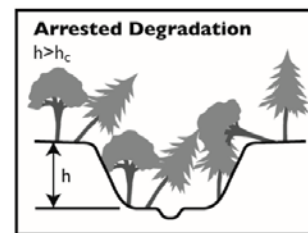
### Stage 0



### Stage 1



### Stage 3s



#### Hydrogeomorphic Attributes

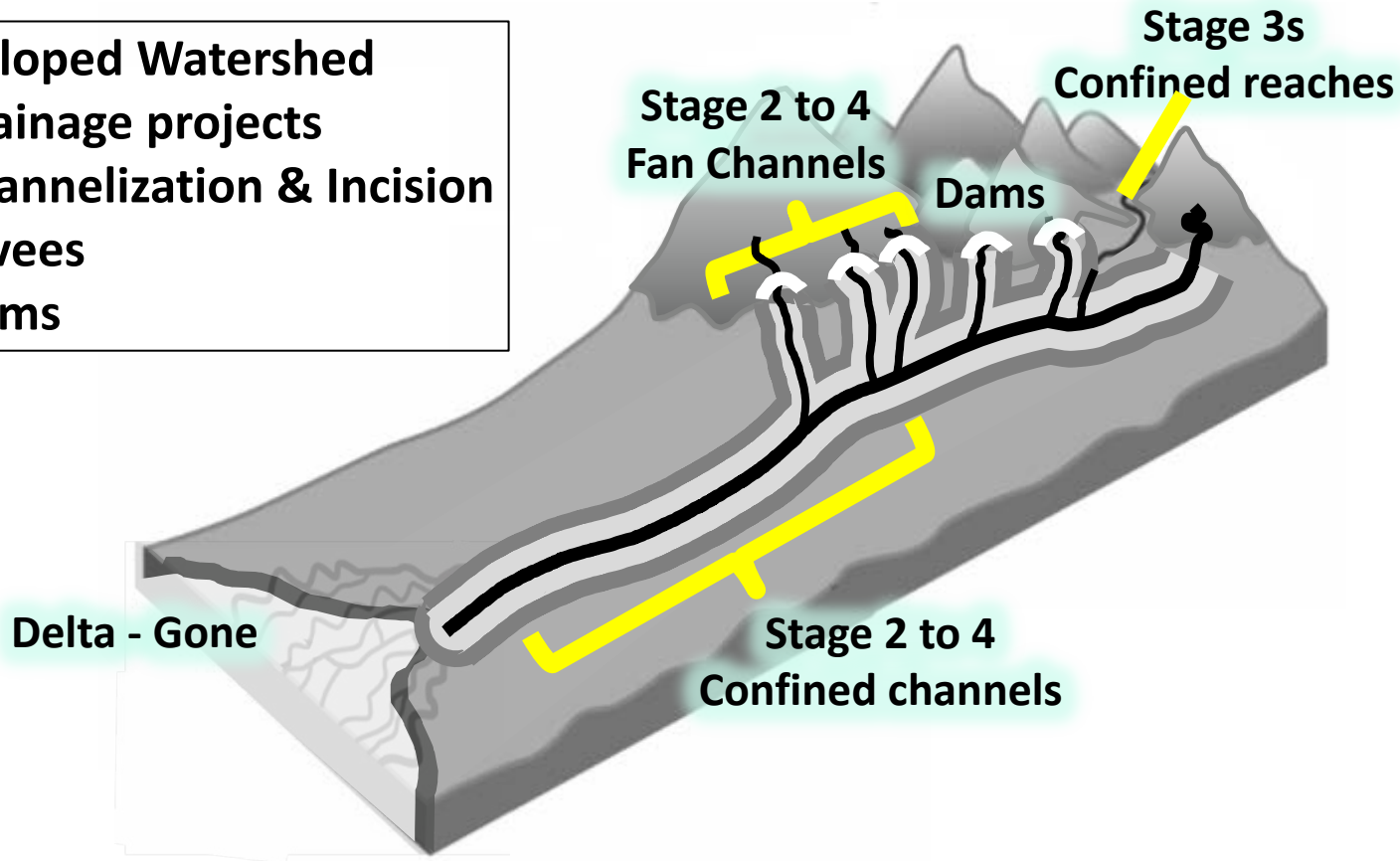
- Physical Channel Dimensions
- Channel and Floodplain Features
- Substrate
- Hydraulics
- Vegetation
- Hydrological Regime

#### Habitats & Ecosystem Benefits

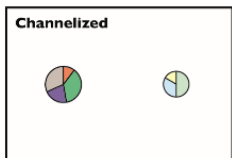
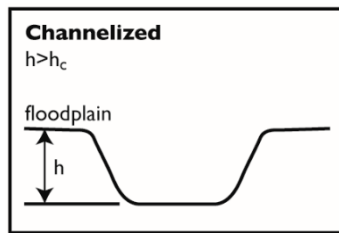
- Habitat
- Water Quality
- Biota
- Resilience

## Developed Watershed

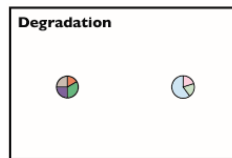
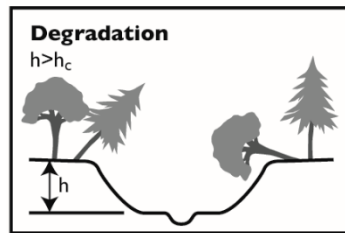
- Drainage projects
- Channelization & Incision
- Levees
- Dams



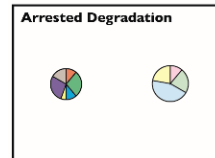
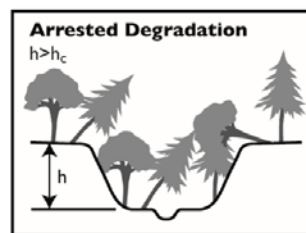
### Stage 2



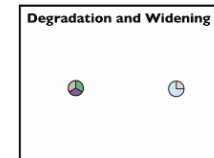
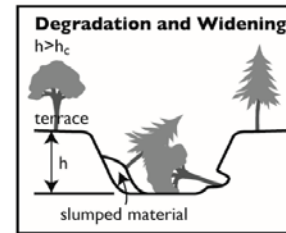
### Stage 3



### Stage 3s



### Stage 4



#### Hydrogeomorphic Attributes

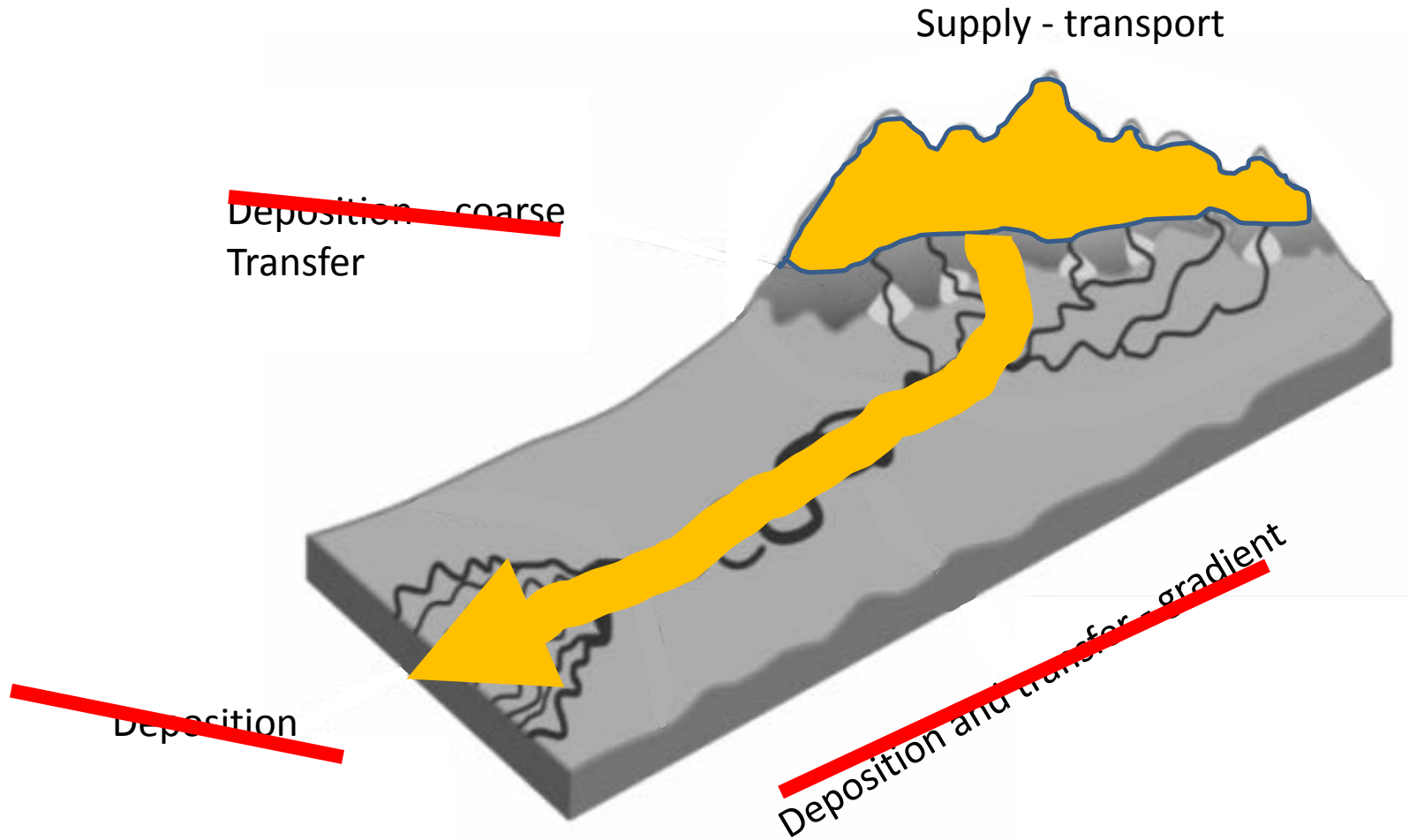
- Physical Channel Dimensions
- Channel and Floodplain Features
- Substrate
- Hydraulics
- Vegetation
- Hydrological Regime

#### Habitats & Ecosystem Benefits

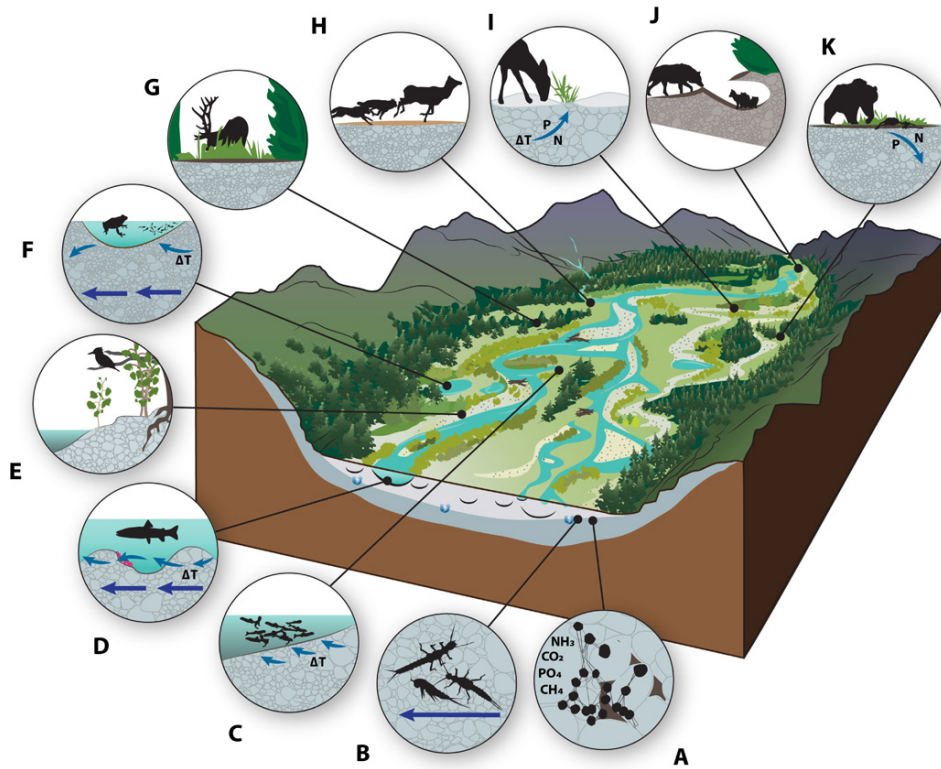
- Habitat
- Water Quality
- Biota
- Resilience

# Current Conditions

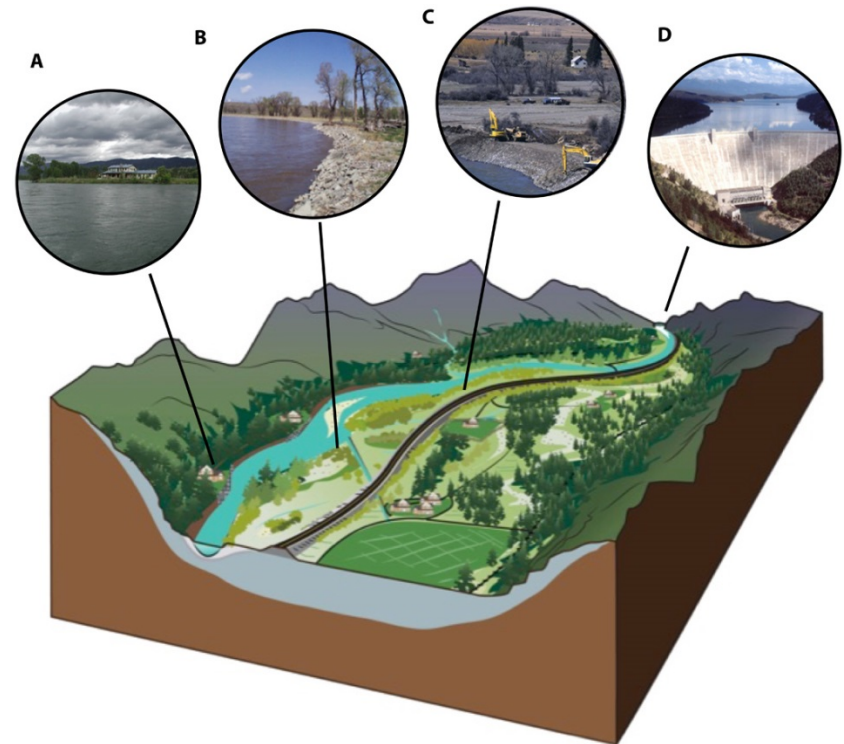
## Watershed Process Domains



**Fig. 5 The gravel-bed river floodplain as the ecological nexus of regional biodiversity.**



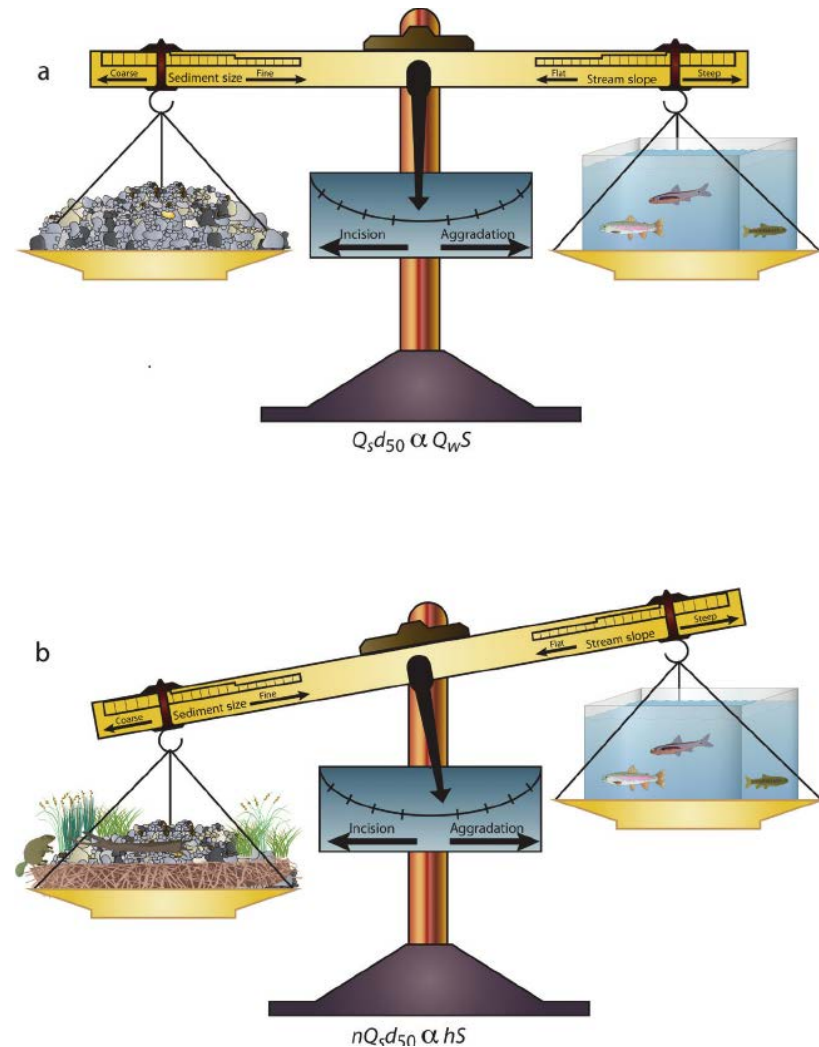
**Fig. 6 The gravel-bed river floodplain as affected by human structures.**



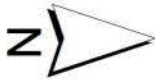
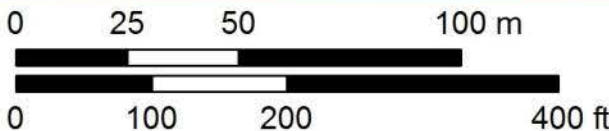


If the biggest problem is incised channels and floodplain drainage, how do we reverse incision and “undrain” the land?

- Not by designing moderately incised channels
  - “bankfull”
  - “equilibrium”
  - “regime”
  - “stable”
- By restoring deposition in deposition zones.



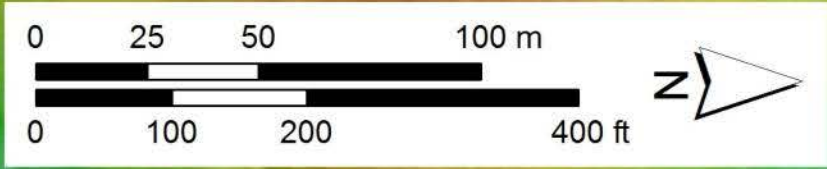
# Stage 0 Restoration Examples:



Bankfull Channel

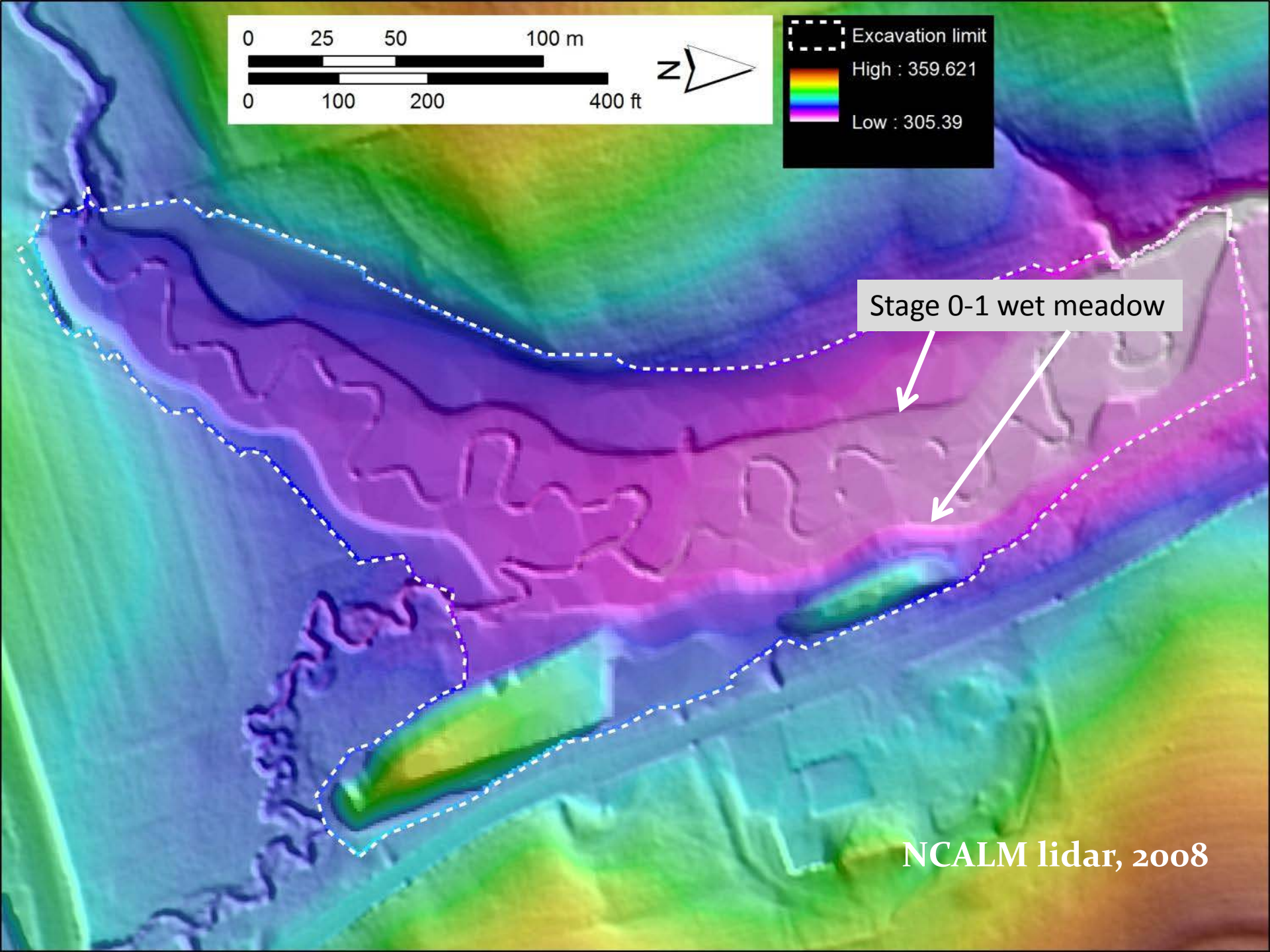


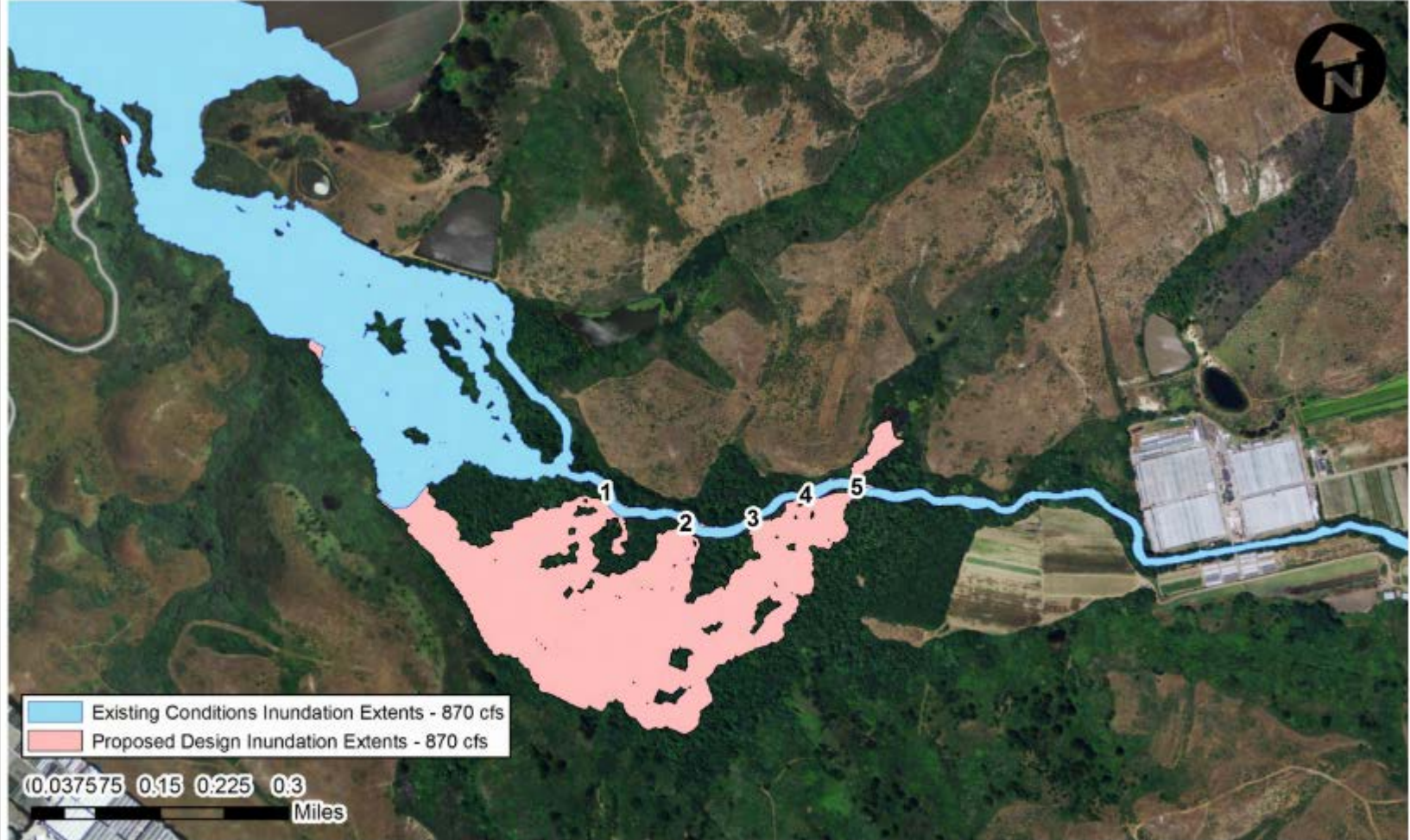
Walter and Merritts  
Pennsylvania - Tribs to Chesapeake Bay



Stage 0-1 wet meadow

NCALM lidar, 2008





Existing Conditions Inundation Extents - 870 cfs  
 Proposed Design Inundation Extents - 870 cfs

0.0375 0.15 0.225 0.3  
 Miles

Notes:  
 - Background Aerial Imagery: NAIP 2009 San Mateo County  
 - Model Results: Sediment and River Hydraulics 2D (SRH2D)  
 - Numbers on map refer to design sites



Butano Creek Floodplain Restoration Project  
**Simulated Inundation Extents at 870 cfs (~2-yr)**

Project No. 15-1013

Created By: JRB

**Figure 7**



Butano Creek – plug channel and lower levee to re-connect 100 acre floodplain

# USFS projects

**Fivemile-Bell**  
Coastal Lakes Basin  
Siuslaw NF

**Deer Creek**  
Upper McKenzie River  
Willamette NF

**Whychus Creek**  
Upper Deschutes Basin  
Deschutes NF

**Staley Creek**  
Upper Middle Fork Willamette  
Willamette NF

Content may not reflect National Geographic's current map policy. Sources: National Geographic, Esri, DeLorme, HERE, UNEP-WCMC, USGS, NASA, ESA, METI, NRCAN, GEBCO, NOAA, increment P Corp.

# Fill Channels



*'Stage Zero Rehabilitation'* Paul Powers, Deschutes NF Regional Restoration Team  
Oregon AFS Meeting





*'Stage Zero Rehabilitation'* Paul Powers, Deschutes NF Regional Restoration Team  
Oregon AFS Meeting

Lost Cr- During Construction  
View of the Upper Meadow  
(HC#6)  
October 2012



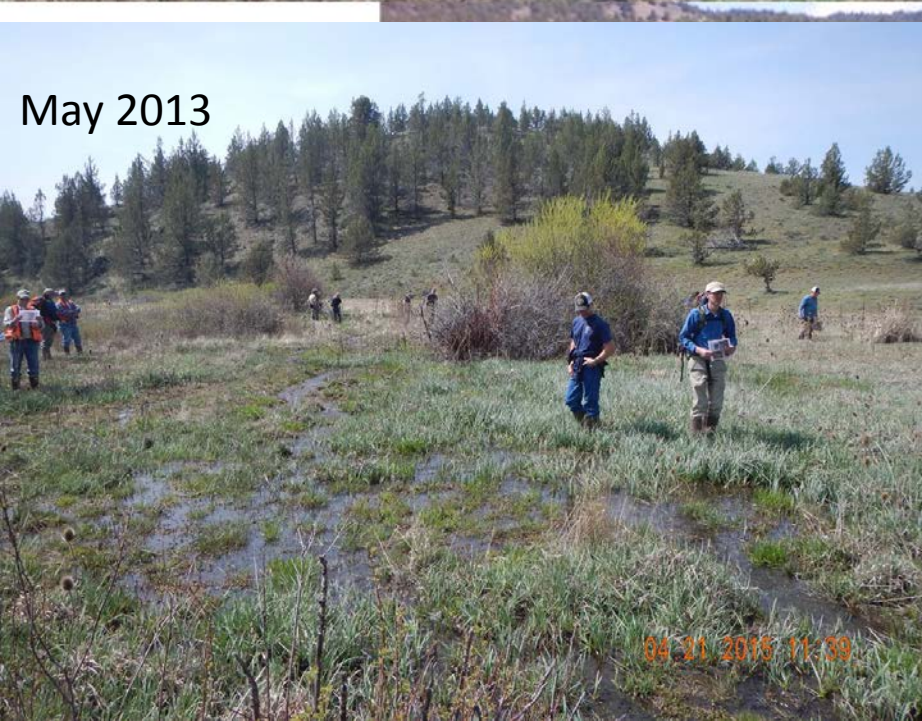
8,000 cubic yards fill

Pre-Construction  
May 29, 2012



Post-Construction  
May 30, 2013

May 2013



# Re-contour the valley floor



Whychus Creek, OR

# Re-contour valley



Richard Scott Nelson

Whychus Creek, OR



Richard Scott Nelson

Base

Level

Control



brightsea.co.uk

Born to manage wood in streams,  
and incrementally trap sediment

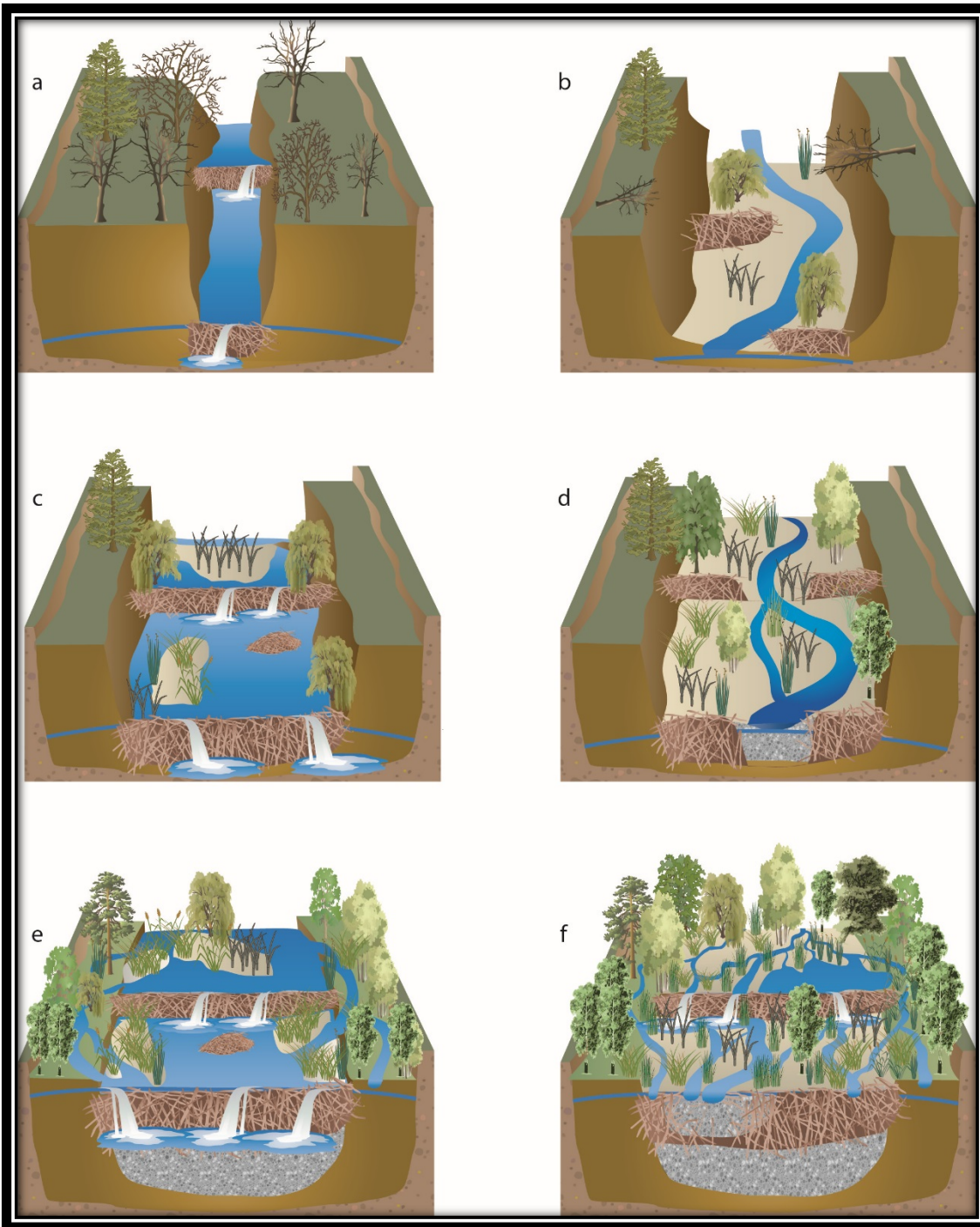




# Beaver Dams in Incised Channels

*“can reduce Stage 1 to Stage 7-8/0 recovery times by 1-2 orders of magnitude”*

Recovery in years to decades instead of decades to centuries





Post lines and BDA's

2014.05.19 16:06

COLORADO

Fort Collins

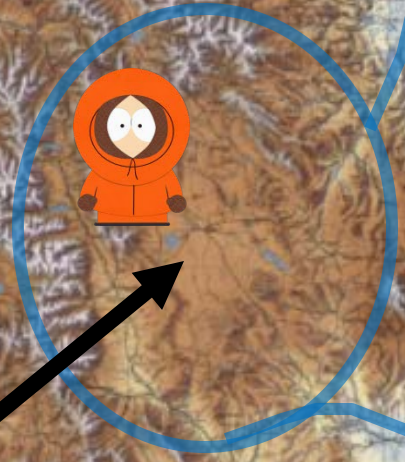
South Platte

Denver

Colorado Springs

Pueblo


Arkansas



***South Park***

# *Restoring Stage 0 beaver streams in the Southern Rockies*

Mark Beardsley

- 
- Fencing
  - Beaver re-intro
  - Minor contouring

# Summary:

- Channel management and restoration standard practice are rooted in goals for land drainage and channel stability, not in habitat and ecosystem benefits.
- Recent restoration practice is trying new approaches
- Important to set process-based goals
  - enhancing crappy channels is not enough
  - deposition in deposition zones is key
- Find and exploit accommodation space to restore Stage 0
  - Every watershed needs some

# Suggested reading:

Hauer et al., 2016. Gravel bed river floodplains are the ecological nexus for glaciated mountain landscapes. *Science Advances* 24 Jun 2016: Vol. 2, no. 6, e1600026

Gregory, Swanson; et al. 1991. An Ecosystem Perspective of Riparian Zones *Bioscience*; 41, 8;

Cluer and Thorne 2013. A Stream Evolution Model Integrating Habitat and Ecosystem Benefits. *River Research and Applications* 30: 135-154

Corline, Sommer, Jeffres & Katz . 2016. Zooplankton ecology and trophic resources for rearing native fish on an agricultural floodplain in the Yolo Bypass California, USA ISSN 0923-4861 *Wetlands Ecol Management*

Pollock et al., 2014. using beaver dams to restore incised stream ecosystems. *Bioscience*, 64(4).

Walter and Merritts 2008. Natural Streams and the Legacy of Water-Powered Mills. SCIENCE VOL 319 18 JANUARY 2008

Merritts et al 2018. results from a decade of monitoring Stage 0 restored areas. See website <https://www.anthropocenestreams.org/>