

This 19" monitor provides both the performance and features required by professionals working with all types of image processing tasks from computer-aided design to desktop publishing. Its sophisticated image and color control functions allow highly detailed adjustments for achieving precise color rendering.

- 1280 × 1024 native resolution
- 280 cd/m² brightness and 450:1 contrast ratio
- Digital and analog support with DVI-I input terminals
- 5-year warranty



FEATURES

Minimal Color Shift, Fast Response Time

The LCD panel exhibits minimal color shift when viewed from off-center. For applications such as 3D CAD that require frequent zooming in/out and rotating of images, the fast response time ensures proper display of mid-tones without ghosting or streaking, even in detailed linear drawings.

Fine Contrast Mode Selection

Choose from among six different Fine Contrast modes—Text, Picture, Movie, External, Custom and sRGB—for the one that best suits the kind of application you're using. Access is handy via a button on the front panel.

Image Mode Assignment

Part of the ScreenManager Pro for LCD utility software, this function lets you assign a Fine Contrast

mode to a specific application. Whenever you use the application, the screen automatically changes to the assigned mode. It also provides a WindowMovie mode, which darkens the surrounding background so the video window appears clearer and brighter.

Color Space Emulation

Included in EIZO's ScreenManager Pro for LCD utility software, Color Space Emulation enables you to match your monitor to the color characteristics of other CRT or LCD monitors, or to other color spaces. (Software is compliant with Windows 98SE/ME/2000/XP only.)

FlexScan® L797

19" Color LCD Monitor



Independent 6-Color Control

Extensive color control allows the precise adjustment of even a single color in an image. You can independently adjust hue and saturation for each primary (red, green, blue) and secondary (cyan, magenta, yellow) color.

Placement Flexibility

The FlexScan L797 offers exceptional flexibility to accommodate both your work style and your work space. The stand is height adjustable through a 100 mm range and provides 41° tilt and 70° swivel so every user can easily set the ideal position. It also pivots 90° for portrait mode viewing. Compatibility with VESA mounting standards allows the stand to be removed so the monitor can be mounted on a movable arm or wall bracket.

10-Bit Gamma Correction

Automatically takes 8-bit input signals (256 tones for each primary color) from the graphics board and uses a 10-bit look-up table (1,021 tones) to produce smoother, more accurate gradations of color. Gamma values are also user-adjustable from 1.4 to 3.0 in 0.2 increments.

Customer Assurance

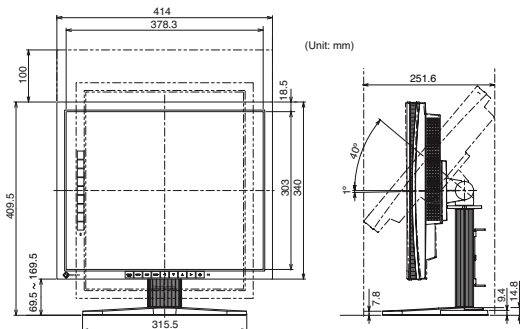
Complies with leading industry standards, including TCO'03, TÜV Ergonomics, and EPA Energy Star. It also conforms to EIZO's own strict Eco Products 2002 environmental criteria for design, manufacture, packaging, and usage, including the introduction of lead-free solder and chrome-free steel plates.



Accessories

A variety of accessories are available to enhance convenience and flexibility, including a dual height-adjustable stand, several arms, a panel protector and client management software. For detailed information, please see www.eizo.com/products/accessories/

Dimensions



Specifications

Panel	Size and Type	48 cm (19") TFT color LCD panel	
	Viewing Angles (H, V)	170°, 170° (at contrast ratio of 10:1)	
	Brightness / Contrast	280 cd/m ² / 450:1	
	Response Time	20 ms (typical)	
	Native Resolution	1280 × 1024	
	Active Display Size (H × V)	376 × 301 mm	
	Viewable Image Size	Diagonal: 481 mm	
	Pixel Pitch	0.294 × 0.294 mm	
Display Colors	16.77 million from a palette of 1.06 billion		
Available Cabinet Colors	Gray, Black		
Dot Clock	Analog: 135 MHz, Digital: 108 MHz		
Scanning Frequency (H, V)	Analog	30 – 82 kHz, 49 – 86 Hz	
	Digital	30 – 65 kHz, 59 – 61 Hz (VGA Text: 69 – 71 Hz)	
Input Signals	Analog: RGB Analog, Digital: DVI Standard 1.0		
Input Terminals	DVI-I 29 pin × 2 (switchable)		
USB Ports / Standard	1 upstream, 2 downstream / USB Standard Rev. 2.0		
Plug & Play	VESA DDC 2B		
Power	Power Requirements	AC 100 – 120 V, 200 – 240 V: 50 / 60 Hz	
	Power Consumption	54 W (typical)	
	Power Save Mode	Less than 3 W	
Physical Specifications	Height Adjustment Range	100 mm	
	Tilt / Swivel / Pivot	40° Up, 1° Down / 35° Right, 35° Left / 90°	
	Dimensions (W × H × D)	With Stand: 414 × 409.5 – 509.5 × 202.7 mm Without Stand: 414 × 340 × 62 mm	
	Net Weight	With Stand: 8.1 kg, Without Stand: 5.8 kg	
Auto Brightness Functions	Auto Brightness Stabilization		
Auto Adjustment Functions	Auto Adjustment, Range Adjustment		
Display Mode Options	Fine Contrast (Text, Picture, Movie, sRGB, Custom, External, WindowMovie ¹), Auto Fine Contrast ²		
Screen-Manager OSD Adjustment Functions	Screen Adjustment	Clock, Phase, Position, Resolution, Brightness, Contrast, Signal Filter, Screen Size (full screen, enlarge, normal), Smoothing (5 stages), Border Intensity	
	Color Adjustment	Range Adjustment (RGB), Emulation ² , Independent 6-Color Control ² , Gamma, Temperature (14 stages: in 500 K increments from 4000 K – 10000 K including 9300 K), Saturation, Hue, Gain, Reset	
	Power Save Settings	Analog	PowerManager (VESA DPMS, EIZO MPMS), Off Timer
		Digital	PowerManager (DVI DMPM), Off Timer
Other Settings	Signal Settings, Input Priority, Product Information (product name, serial number, resolution, operating time), OSD Menu Settings, Adjustment Lock, Languages (English, French, German, Italian, Japanese, Spanish, Swedish), Reset		
Certifications and Standards	TCO'03 (gray), TCO'99 (black) TÜV/Ergonomics (including ISO 13406-2), TÜV/GS, c-Tick, CE, CB, UL (cTUVus), CSA (cTUVus), FCC-B, Canadian ICES-003-B, TÜV/S, VCCI-B, EPA ENERGY STAR®, CCC, EIZO Eco Products 2002		
Supplied Accessories	AC power cord, user's manual, signal cables (DVI-D - DVI-D, DVI-I - D-Sub mini 15 pin), USB cable, EIZO LCD Utility Disk (Screen-Manager Pro for LCD, ICC Profile), warranty registration card		
Warranty	Five Years ³		

¹ WindowMovie mode is selectable only when the Auto Fine Contrast is active. ² Bundled ScreenManager Pro for LCD is necessary to activate Auto Fine Contrast, Color Space Emulation, and Independent 6-Color Control. Support for those functions varies with the graphics board used. ³ The usage time is limited to 30,000 hours or less, and the warranty period of the LCD panel and backlight is limited to three years from the date of purchase.

With current LCD technology, a panel may contain a limited number of missing or flickering pixels.

All product names and logos are trademarks or registered trademarks of their respective companies. Screen-Manager, SlimEdge, FlexScan, and EIZO are registered trademarks of Eizo Nanao Corporation.

Specifications are subject to change without notice.

© 2004 Eizo Nanao Corporation.

EIZO NANA0 CORPORATION

153 Shimokashiwano, Matto, Ishikawa 924-8566 Japan

Phone +81-76-277-6792 Fax: +81-76-277-6793

www.eizo.com

