

FH-P4200MP

- COMPACT DISC DIGITAL AUDIO
- SUPER TUNER III
- MP3
- DOLBY BNR
- WMA
- BBE DIGITAL
- DSP
- CDTEXT
- EEQ
- MOSFET 50
- SAT READY
- CD CONTROL



Double-DIN CD/Cassette Receiver with LCD Display, iPod® Adapter Ready, iTunes® AAC Playback, MP3/WMA Playback, BMX Digital Compression, MOSFET50, XM-Ready, SIRIUS-Ready, Supertuner® IIITM, Rotary Volume Control, IP-Bus System Control and Slim Remote



NEW FOR 2005

KEH-P2030

- 40Wx4
- XM READY
- SUPER TUNER
- CD CONTROL
- DETACHABLE FACE SECURITY



Cassette Receiver with 40Wx4-Channel High Power, XM-Ready, Supertuner®, IP-Bus System Control, and Detachable Face Security™

DEH-P77DH

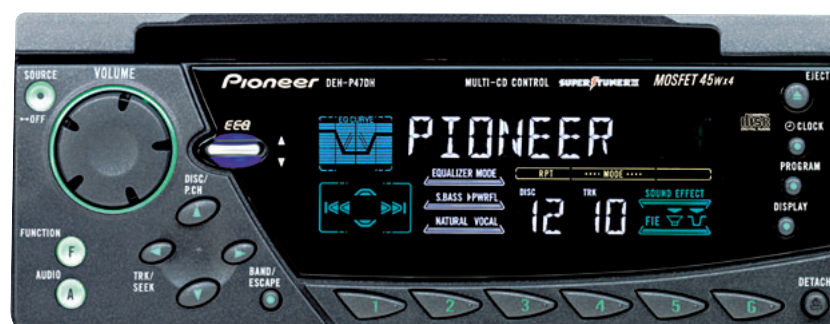
- COMPACT DISC DIGITAL AUDIO
- SUPER TUNER III
- CD-R
- DETACHABLE FACE SECURITY
- EEQ
- Hi-VOLT
- MOSFET 45
- DFS ALARM
- SAT READY
- CD CONTROL



GM/Chrysler-Fit CD Receiver with Multi-Color LCD Display, iPod® Adapter Ready, EEQ™, MOSFET45, XM-Ready, SIRIUS-Ready, Supertuner® IIITM, IP-Bus System Control, Slim Remote, DFS™ Alarm, Pop-up Rotary Volume Control, Detachable Face Security™, and Hi-Volt Preouts



- COMPACT DISC DIGITAL AUDIO
- SUPER TUNER III
- CD-R
- DETACHABLE FACE SECURITY
- EEQ
- MOSFET 45
- SAT READY
- CD CONTROL



GM/Chrysler-Fit CD Receiver with Multi-Color LCD Display, iPod® Adapter Ready, EEQ™, MOSFET45, XM-Ready, SIRIUS-Ready, Supertuner® IIITM, IP-Bus System Control, Pop-up Rotary Volume Control, and Detachable Face Security™

- EEQ
- 45Wx4
- XM READY
- SUPER TUNER
- CD CONTROL
- DETACHABLE FACE SECURITY



Full-Logic Cassette Receiver with Multi-Color Display, EEQ™, 45Wx4-Channel High Power, XM-Ready, Supertuner®, IP-Bus System Control, and Detachable Face Security™

	FH-P4200MP	DEH-P77DH	DEH-P47DH	KEH-P4020	KEH-P2030
SUPERTUNER SECTION					
Supertuner	III ^D	III	III	x	x
XM Radio Ready	x	x	x	x	x
SIRIUS Ready	x	x	x	x	x
24-Station/6-Button (18FM/6AM) Presets	x	x	x	x	x
BSM (Best Stations Memory)	x	x	x	x	x
CD PLAYER/CD FUNCTIONS					
1-bit D/A Converter	x	x	x		
CD-R/CD-RW Compatible	x	x (CD-R)	x (CD-R)		
MP3 Compatible	x				
WMA (Windows Media® Audio)	x				
Wave (.wav) Compatible	x				
iTunes® AAC** Playback	x				
AGC (Automatic Gain Control)	x	x	x		
Disc Title Memory	x	x	x		
Disc List		x	x		
CD Text	x	x (MCD)	x (MCD)		
IP-BUS (Changer Control)	x	x	x	x	x
BMX Digital Compression (SCD)	x				
DBE (MCD)	x				
CASSETTE PLAYER					
Auto Reverse	x			x	x
Full Logic Control	x			x	
SHC Dual-Groove Tape Head	x			x	x
Dolby® B Noise Reduction	x				
Music Search & Repeat	x				
Radio Intercept				x	x
AUDIO SECTION					
MOSFET50 (50Wx4-Channel High Power)	x				
MOSFET45 (45Wx4-Channel High Power)		x	x		
45Wx4-Channel High Power				x	
40Wx4-Channel High Power					x
BTB (Bass/Treble Booster)					x
Equalizer	9-Band	3-Band Parametric	3-Band Parametric	3-Band	
Selectable FIE (Front Image Enhancer)		x	x	x	
Source Level Adjuster (SLA)	x				
DSP	x				
BBE	x				
Loudness	x	Variable	Variable	3 Mode	2 Mode
HPF Crossover	x	x	x		
Selectable Fader	x			x	x
Subwoofer (LPF) Crossover	x	x	x		
Hi-Volt RCA Preouts		3 (4V)			
RCA Preouts	2 (2V)		1 (2V)	1 (2V)	1 (2V)
GENERAL					
iPod® Adapter Ready***	x	x	x		
LCD Display with LED Backlight	x	Multi-Color	Multi-Color	Multi-Color	
Spectrum Analyzer	x				
Detachable Face Security™		x	x	x	x
Flap Face				x	
Face Case (Included)				x	
Remote Control	Slim	Slim			
Rotary Volume Control	x	Pop-up	Pop-up		
Cellular Mute	x	x	x		
Warranty	1 Year	1 Year	1 Year	1 Year	1 Year

* iTunes® AAC Playback: AAC player can decode only AAC files ripped and encoded using iTunes®; they cannot decode AAC DRM files downloaded from iTunes music store®.
 ** AAC: AAC is a short for Advanced Audio Coding and refers to audio compression technology standard used with MPEG 4.
 *** iPod is for legal or rightholder-authorized copying only. Don't steal music. iPod and iTunes are trademarks of Apple Computer, Inc., registered in the U.S. and other countries.

DEQ-9200



Universal Add-On Digital Signal Processor with Auto-EQ, Digital Crossover Network, Legato Link™ Conversion, and Detachable Face Security™

- FEATURES:**
- 3-Band Parametric Equalizer: Presets (6 Factory, 4 User), Nuance Control
 - Auto-EQ: 3 Curves (Dynamic/Natural/Mild), Omni-Directional Microphone (Included)
 - 8x Oversampling 1-Bit Legato Link™ D/A Converter
 - Multi-Color Display with EL Backlighting
 - RCA Input
 - RCA Outputs (x3 Pair) (Front/Rear + Subwoofer or High/Mid/Low)
 - DSP Mode: 5-Mode Digital Sound Field Control (SFC), Listening Position Selector, Front & Rear HPF, Subwoofer LPF (Included)
 - Pro Mode: Time Alignment, Listening Position Selector, High-HPF, Mid-LPF, Mid-HPF, Low-LPF
 - Dimensions (WxHxD): 7-3/8" x 2-1/4" x 1-1/4"



DEQ-7600



Universal Add-On Digital Processing Equalizer with DSP and Subwoofer Output

- FEATURES:**
- Electronic 15-Band Digital Graphic Equalizer: Presets (5 Factory, 3 User), Nuance Control, 15 Center Frequencies, ±12dB Gain
 - 5-Mode Digital Sound Field Control (SFC)
 - Listening Position Selector
 - Hi-Bit Legato Link™ Digital Processing with 20-Bit Accuracy
 - RCA Input
 - RCA Outputs (x3 Pair) (Front/Rear + Subwoofer)
 - Sub-Out Crossover (50/80/125Hz, -18dB/Oct.)
 - Multi-Color EL Display
 - Remote Control Sensor
 - Dimensions (WxHxD): 7" x 2" x 5-1/4"



CDX-P1280

12-Disc IP-Bus Multi-CD Player



Ready to step up to a 12-disc CD changer? The CDX-P1280 works with a Pioneer system IP-Bus headunit and can be mounted vertically or horizontally and has CD Text capability.



CDX-FM1289

Premier® Universal FM-Modulated 12-Disc Multi-CD System with Wireless Remote Control

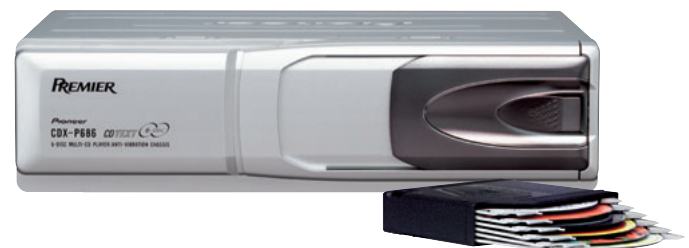


Want a 12-disc changer that goes with your factory stereo? No problem. The CDX-FM1289 uses your FM signal to reproduce CD audio, giving you hours of CD, CD-R, and CD-RW play. It mounts easily, and includes a remote and control/display unit.



CDX-P686

Premier® 6-Disc IP-Bus Multi-CD Player



This 6-disc changer is compatible with Pioneer's IP-Bus headunits. Disc title memory allows you to program the names of up to 100 CDs. Mount it anywhere and control it via your headunit.



CDX-FM687

Universal FM-Modulated 6-Disc Multi-CD System with Wireless Remote Control



Yes, you can add a CD changer onto your factory stereo. The CDX-FM687 works off an FM signal. Load in six of your favorite discs and control everything with a wireless remote and a control/display unit.



	CDX-P1280	CDX-P686	CDS-P4000	CDX-FM1289	CDX-FM687
CD PLAYER					
Disc Capacity	12	6	1	12	6
AGC (Automatic Gain Control)	x	x	x	x	x
CD-R/CD-RW Compatible	x	x	x	x	x
1-bit D/A Converter	x	x	x	x	x
8x Oversampling Filter	x	x	x	x	x
"Double-Floating" Anti-Vibration System	x	x	x	x	x
CD-Text Decoder	x	x		x	x
Disc Title Memory	100 Discs	100 Discs		100 Discs	100 Discs
ITS Memory	100 Discs	100 Discs		100 Discs	100 Discs
IP-Bus Control Output	x	x	x	x	x
IP-Bus Control Input (Pass-thru)			x		
Built-in FM Modulator				x	x
Selectable FM Frequencies				12	12
GENERAL					
Multiple Mounting Angles	x	x	In-Dash	x	x
Wired Control/Display				x	x
Wireless Remote				Slim	Slim
Magazine	JD1212S	JD612V		JD1212S	JD612V
Warranty	1 Year	2 Year	1 Year	2 Year	1 Year

CDS-P4000

Single-Disc IP-Bus Add-On CD Player with LCD Level Indicator



If all you need is a single disc player to add onto your Pioneer IP-Bus headunit or AV receiver, this is it. It seamlessly connects to your system and provides an illuminated LCD display.



PRS-D5000SPL

NEW FOR 2005



RCA Input and Output



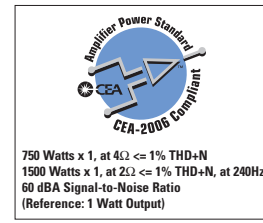
Oversized Power Ground Terminals

Premier® Competition-Level SPL Digital Mono Amplifier

3000W MAX.

- SPECIFICATIONS:**
- MAX. Music Power: 3000W (2Ω)/1500W (4Ω)
 - Continuous Power Output: 750W x 1 (4Ω), 1500W x 1 (2Ω)
 - Frequency Response: 10 – 240Hz
 - Total Harmonic Distortion: 0.05% (50W, 100Hz)
 - Signal-to-Noise Ratio: 90dB
 - Dimensions (W x H x D): 11-13/16" x 2-1/2" x 13" (300 x 64 x 330mm)
 - Weight: 16 lbs. 1 oz. (7.3kg)

- FEATURES:**
- Mono (1-Channel) Capability
 - Externally Bridgeable (SEPP, Single Ended Push Pull)
 - MASS (Multiple Amplifier Synchronization System)
 - PWM Regulated MOSFET Power Supply
 - Independent Rail Regulating Power Supply (IRRP)
 - Dynamic Amplifier Protection
 - MOSFET Output Section
 - Balanced Isolator Input Circuit
 - Massive 1/0 Gauge Block-Typed Power/Ground Terminals with Cover
 - 8 Gauge Speaker Terminals with Cover
 - Gold-Plated RCA Inputs and Outputs
 - Hi-Volt Input Level Control (200mV - 6.5V)
 - Variable LPF (40 - 240Hz, -18/-24dB/Oct.)
 - Subsonic Filter (20Hz, -18dB/Oct.)
 - Variable Bass Boost (40 - 120Hz, 0 - 12dB)
 - 150A Fuse Included
 - Premier 2-Year Warranty



750 Watts x 1, at 4Ω <= 1% THD+N
1500 Watts x 1, at 2Ω <= 1% THD+N, at 240Hz
60 dBA Signal-to-Noise Ratio
(Reference: 1 Watt Output)

PRS-D3000SPL

NEW FOR 2005



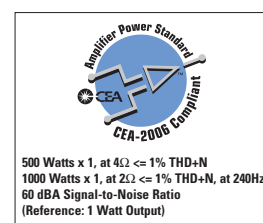
RCA Input and Output

Premier® Competition-Level SPL Digital Mono Amplifier

2000W MAX.

- SPECIFICATIONS:**
- MAX. Music Power: 2000W (2Ω)/1000W (4Ω)
 - Continuous Power Output: 500W x 1 (4Ω), 1000W x 1 (2Ω)
 - Frequency Response: 10 – 240Hz
 - Total Harmonic Distortion: 0.05% (50W, 100Hz)
 - Signal-to-Noise Ratio: 90dB
 - Dimensions (W x H x D): 11-13/16" x 2-1/2" x 11" (300 x 64 x 279mm)
 - Weight: 13 lbs. (5.9kg)

- FEATURES:**
- Mono (1-Channel) Capability
 - Externally Bridgeable (SEPP, Single Ended Push Pull)
 - MASS (Multiple Amplifier Synchronization System)
 - PWM Regulated MOSFET Power Supply
 - Dynamic Amplifier Protection
 - MOSFET Output Section
 - Balanced Isolator Input Circuit
 - 4 Gauge Block-Typed Power/Ground Terminals with Cover
 - Oversized Screw-Type Speaker Terminals
 - Gold-Plated RCA Inputs and Outputs
 - Hi-Volt Input Level Control (200mV - 6.5V)
 - Variable LPF (40 - 240Hz, -24dB/Oct.)
 - Subsonic Filter (20Hz, -18dB/Oct.)
 - Variable Bass Boost (40 - 120Hz, 0 - 12dB)
 - Premier 2-Year Warranty



500 Watts x 1, at 4Ω <= 1% THD+N
1000 Watts x 1, at 2Ω <= 1% THD+N, at 240Hz
60 dBA Signal-to-Noise Ratio
(Reference: 1 Watt Output)

The "No-Hold-Barred" Amplifiers — Use Them with the Premier SPL Subwoofers

Engineered to produce power that pulls no punches, the new Premier PRS-D5000SPL and PRS-D3000SPL digital mono amplifiers offer the extreme performance and power required for sound pressure level (SPL) competitions.

The units are externally bridgeable and permit two separate amplifiers to be joined together as one, doubling the power to a single woofer or voice coil. Pioneer's proprietary Multi-Amplifier Synchronization System (MASS) technology allows one amplifier (the master) to control the settings of other amplifiers when two or more amps are "strapped" together. Especially important for multi-amplified systems, this powerful Pioneer technology eliminates the need to adjust each amplifier gain separately.

The internal construction also contributes to the units' superior

performance. With conventional amplifiers, only the positive rail is truly regulated, causing the negative rail to become unstable during high power demand. The Premier SPL amplifiers feature an independent rail-regulating power supply (IRRP) which takes the positive and negative rail voltages and separately regulates them. This results in unsurpassed reliability and performance.

A specialized protection circuitry called Dynamic Amplifier Protection (DAP) has also been applied. DAP, quite simply, protects the amplifiers from failing. The amps automatically reconfigure themselves based on output signal level. Designed with the highest possible power carrying capability — also known as "low current density" — DAP ensures the utmost in unit reliability and efficiency.

The astounding performance of the new Premier SPL amplifiers matches the capabilities of Pioneer's new line of Premier SPL subwoofers. Combine the units for "no-holds-barred" in-car audio excitement.

GM-7150M NEW FOR 2005



RCA Input



250 Watts x 1, at 4Ω <= 1% THD+N
360 Watts x 1, at 2Ω <= 1% THD+N, at 100Hz
80 dBA Signal-to-Noise Ratio
(Reference: 1 Watt Output)

800W MAX.

Get harder-hitting bass with 800 watts of high power at a 2-ohm load. This amp delivers powerful sound with a low distortion rating of less than 0.03%.

GM-5100T NEW FOR 2005



125 Watts x 2, at 4Ω <= 1% THD+N
380 Watts x 1, at 4Ω BRIDGE <= 1% THD+N
75 dBA Signal-to-Noise Ratio
(Reference: 1 Watt Output)

760W MAX.

Give your system clean, high power. This amp has two channels to enhance your front/rear sound. Bridge the channels together to drive a power-hungry subwoofer for harder-hitting bass.

GM-D510M NEW FOR 2005



1000W MAX.

CLASS D AMPLIFIER
Big, efficient power. Operating in Class D, the space-saving GM-D510M gives you massive power with less heat – and less distortion—than with a conventional amp.

Push an explosive 1000 watts of power into a hard-driving 2-ohm load. Class D design means high efficiency, cool operation and high decibel sound without taking too much space in your trunk—perfect for driving a sub or two.

GM-6150F NEW FOR 2005



RCA Input and Output



60 Watts x 4, at 4Ω <= 1% THD+N
150 Watts x 2, at 4Ω BRIDGE <= 1% THD+N
80 dBA Signal-to-Noise Ratio
(Reference: 1 Watt Output)

600W MAX.

Upgrade your in-car audio system with 600 watts of high power and variable LPF and HPF. Dynamic power can be yours whether the amp is configured for 2- or 4-channel.

GM-3100T NEW FOR 2005



60 Watts x 2, at 4Ω <= 1% THD+N
150 Watts x 1, at 4Ω BRIDGE <= 1% THD+N
80 dBA Signal-to-Noise Ratio
(Reference: 1 Watt Output)

300W MAX.

Add power with clarity to your system and experience the excitement of an on-board live performance. It's a smart, simple solution to improving your in-car sound.

	GM-7150M	GM-6150F	GM-5100T	GM-3100T	GM-D510M
SPECIFICATIONS					
Peak Music Power	500W (4Ω) 800W (2Ω)	120W x 4 (4Ω) 300W x 2 (Bridge, 4Ω)	250W x 2 (4Ω) 760W x 1 (Bridge)	120W x 2 (4Ω) 300W x 1 (Bridge)	600W (4Ω) 1000W (2Ω)
Number of Channels	1	4	2	2	1
Continuous Power (4Ω)	250W x 1	60W x 4	125W x 2	60W x 2	300W x 1
Continuous Power (2Ω)	360W x 1	75W x 4	190W x 2	75W x 2	500W x 1
Continuous Power Bridged (4Ω)		150W x 2	380W x 1	150W x 1	
Frequency Response (0, -1dB)	10Hz-240Hz (+0dB, -3dB)	10Hz-50kHz	10Hz-50kHz	10Hz-50kHz	5Hz-240Hz (+0.5dB, -3dB)
Total Harmonic Distortion (1kHz, 4Ω)	<0.03% (120Hz)	<0.01%	<0.015%	<0.008%	<0.1% (100Hz, 4Ω)
Signal-to-Noise Ratio (HF-A Weighted, at 1kHz)	>100dB	>95dB	>95dB	>100dB	>100dB
Dimensions (W x H x D)	11-13/16" x 2-3/8" x 12-7/8"	11-13/16" x 2-3/8" x 12-7/8"	11-13/16" x 2-3/8" x 12-7/8"	11-13/16" x 2-3/8" x 7-5/16"	10-9/16" x 2-1/16" x 9-13/16"
FEATURES					
Bridgeable 1/2/3-Channel Capability			X	X	
Bridgeable 2/3/4-Channel Capability		X			
Class D Amplifier					X
PWM Regulated MOSFET Power Supply	X	X	X		X
DMOSFET Output Section					X
Balanced Isolator Input Circuit	X	X	X	X	
Oversized Screw-Type Power/Ground Terminals	X	X	X	X	X
RCA Inputs	2 Ch	4 Ch	2 Ch	2 Ch	2 Ch
RCA Outputs (Pass Thru)		X			
Speaker Level Input	X	X	X	X	
Screw-Type Speaker Terminals	X	X	X	X	X
Hi-Volt Input Level Control (200mV-6.5V)	X	X	X	X	
Variable Crossover (40-240Hz, -24dB/Oct. [LPF])					X
Variable LPF (40-240Hz, -12dB/Oct.)	X				
Selectable Crossover (80Hz, -12dB/Oct.)		X			
Bass Boost (50Hz, 0/6/12dB)	X		X		
Bass Boost Remote (50Hz, 0/6/9/12dB)	X				
Selectable LPF (80Hz, -12dB/Oct.)			X	X	

TS-W5000SPL NEW FOR 2005

Premier® 12" Competition-Level SPL Component Subwoofer



5000W MAX.



2003 Champion, Extreme 9+
2003 Deathmatch Champion
2004 Deathmatch Champion



2004 dBS Champion
2004 Bass Olympics Champion



FEATURES:

- Interlaced Carbon Fiber Reinforced IMPP Cone Woofer
- Wide-Roll, Woven Aramid Fiber Radial Rubber Surround
- Overhung Surround Design
- Ceramic-Coated Voice Coil Wire
- Dual 3", High Inductance, 4-Layer, Long Voice Coil (2 x 4Ω)
- 7-Slit Glass Imide Voice Coil Bobbin
- Precision Double Conex Damper with Damper Rings
- Extended and Vented Pole Yoke
- Aerodynamic Magnetic Gap (ADMG) Design

- Massive (320 oz.) Triple Stacked Magnets
- Thick 1.2" (30mm) Top Plate
- Bottom Hold Design Aluminum Die-Cast One-Piece Rigid Chassis
- 8-Gauge Wire Terminal

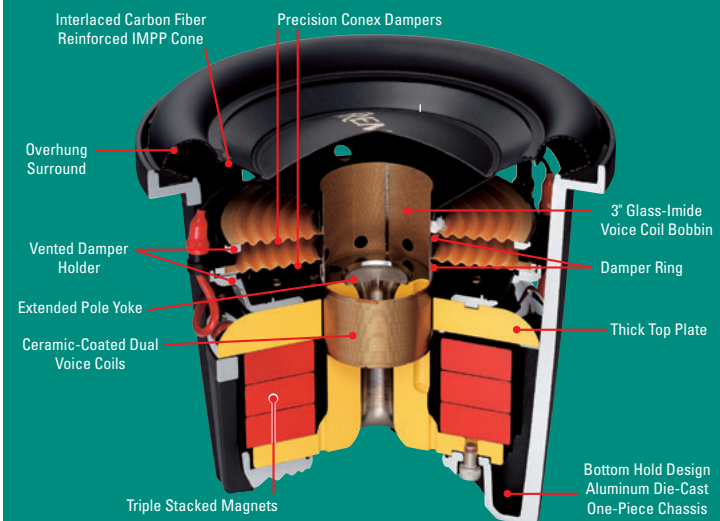
SPECIFICATIONS:

- 5000 Watts Max. Music Power
- 2000 Watts Nominal Power Handling
- Dual Voice Coil Design (2Ω or 8Ω)
- Frequency Response: 18 - 2,000Hz
- Sensitivity: 88dB
- Recommended Enclosure: 1.5 Cubic Feet

Premier SPL Competition Grade Subwoofer

After three years of development and four patent pending innovations, the TS-W5000SPL subwoofer has what it takes to win competitions. Innovations include Interlaced Carbon Fiber Reinforced IMPP Cone, Aramid Fiber Woven Radial Surround, Dual Ceramic-Coated Voice Coils, and an Overhung Surround. The result is high power handling, louder improved output capability (+170dB) and jaw dropping bass response.

Cross Section of TS-W5000SPL



TS-W3004SPL NEW FOR 2005

Premier® 12" Competition-Level SPL Component Subwoofer



3000W MAX.

4Ω DVC



Rear View



FEATURES:

- Interlaced Carbon Fiber/Glass Fiber Reinforced IMPP Cone Woofer
- Wide-Roll, 3-Layer Fiber Woven Aramid Radial Surround with Honeycomb Cloth
- Double 4-Layer, Long Voice Coil (2 x 4Ω)
- Ceramic-Coated Voice Coil Wire
- Titanium Voice Coil Bobbin
- Super Aramid Fiber Damper
- Extended and Vented Pole Yoke
- Double Stacked Magnets (110 oz)
- Thick 7/8" (23mm) Top Plate
- Bottom Hold Design Aluminum Die-Cast One-Piece Rigid Chassis

- Aluminum Heatsink Cooling System
- Silver Binding Posts
- One-Piece Rubber Gasket
- Accessory Grill (UD-G306) Available
- SPL Ported Enclosure (UD-W12) Available

SPECIFICATIONS:

- 3000 Watts Max. Music Power
- 1000 Watts Nominal Power Handling
- Dual Voice Coil Design (2Ω or 8Ω)
- Frequency Response: 18 - 700Hz
- Sensitivity: 89dB
- Recommended Enclosure: 0.85 - 1.75 Cubic Feet

TS-W3002SPL NEW FOR 2005

Premier® 12" Competition-Level SPL Component Subwoofer



3000W MAX.

2Ω DVC



Rear View



FEATURES:

- Interlaced Carbon Fiber/Glass Fiber Reinforced IMPP Cone Woofer
- Wide-Roll, 3-Layer Rubber Woven Aramid Radial Surround with Honeycomb Cloth
- Double 6-Layer, Long Voice Coil (2 x 2Ω)
- Ceramic-Coated Voice Coil Wire
- Titanium Voice Coil Bobbin
- Super Aramid Fiber Damper
- Extended and Vented Pole Yoke
- Double Stacked Magnets (110 oz)
- Thick 7/8" (23mm) Top Plate
- Bottom Hold Design Aluminum Die-Cast One-Piece Rigid Chassis

- Aluminum Heatsink Cooling System
- Silver Binding Posts
- One-Piece Rubber Gasket
- Accessory Grill (UD-G306) Available
- SPL Ported Enclosure (UD-W12) Available

SPECIFICATIONS:

- 3000 Watts Max. Music Power
- 1000 Watts Nominal Power Handling
- Dual Voice Coil Design (1Ω or 4Ω)
- Frequency Response: 18 - 700Hz
- Sensitivity: 89dB
- Recommended Enclosure: 0.85 - 1.75 Cubic Feet

TS-W2504SPL NEW FOR 2005

Premier® 10" Competition-Level SPL Component Subwoofer

2500W MAX.

4Ω DVC



FEATURES:

- Interlaced Carbon Fiber/Glass Fiber Reinforced IMPP Cone Woofer
- Wide-Roll, 3-Layer Fiber Woven Aramid Radial Surround with Honeycomb Cloth
- Double 4-Layer, Long Voice Coil (2 x 4Ω)
- Ceramic-Coated Voice Coil Wire
- Titanium Voice Coil Bobbin
- Super Aramid Fiber Damper
- Extended and Vented Pole Yoke
- Double Stacked Magnets (81 oz)
- Thick 7/8" (23mm) Top Plate
- Bottom Hold Design Aluminum Die-Cast One-Piece Rigid Chassis
- Aluminum Heatsink Cooling System
- Silver Binding Posts
- One-Piece Rubber Gasket
- Accessory Grill (UD-G256) Available
- SPL Ported Enclosure (UD-W10) Available

SPECIFICATIONS:

- 2500 Watts Max. Music Power
- 800 Watts Nominal Power Handling
- Dual Voice Coil Design (2Ω or 8Ω)
- Frequency Response: 18 - 1,000Hz
- Sensitivity: 87dB
- Recommended Enclosure: 0.65 - 1.25 Cubic Feet

TS-W2502SPL NEW FOR 2005

Premier® 10" Competition-Level SPL Component Subwoofer

2500W MAX.

2Ω DVC



FEATURES:

- Interlaced Carbon Fiber/Glass Fiber Reinforced IMPP Cone Woofer
- Wide-Roll, 3-Layer Fiber Woven Aramid Radial Surround with Honeycomb Cloth
- Double 6-Layer, Long Voice Coil (2 x 2Ω)
- Ceramic-Coated Voice Coil Wire
- Titanium Voice Coil Bobbin
- Super Aramid Fiber Damper
- Extended and Vented Pole Yoke
- Double Stacked Magnets (81 oz)
- Thick 7/8" (23mm) Top Plate
- Bottom Hold Design Aluminum Die-Cast One-Piece Rigid Chassis
- Aluminum Heatsink Cooling System
- Silver Binding Posts
- One-Piece Rubber Gasket
- Accessory Grill (UD-G256) Available
- SPL Ported Enclosure (UD-W10) Available

SPECIFICATIONS:

- 2500 Watts Max. Music Power
- 800 Watts Nominal Power Handling
- Dual Voice Coil Design (1Ω or 4Ω)
- Frequency Response: 18 - 1,000Hz
- Sensitivity: 87dB
- Recommended Enclosure: 0.65 - 1.25 Cubic Feet

New Looks and Materials — for a "Bigger Boom" Bass. New SPL Subwoofers.

SPL subwoofers in 2005 come with new metallic looks and materials to deliver an even more exciting on-board listening experience. The larger magnet circuit, 7/8" (23mm) thick top plate, and newly-applied titanium voice coil bobbin — boasting 1.5 times more rigidity than previous models — combine to deliver even more powerful, punchier bass and a wider range of enclosure volume options.

Use of new materials also improves the units' reliability regardless of enclosure volume. The ceramic-coated voice coil wire raises heat resistance by 50% and incorporated heat sink increases heat dissipation by 20%, while the Super Aramid Fiber Damper ensures higher reliability and comes with a new Double Damper Ring structure based on a new, patent-pending technology from Pioneer.



The new Premier SPL subwoofers feature multiple patent-pending technologies derived from extreme SPL competition, making it possibly the world's most advanced subwoofer.

TS-SW124D

Premier® 12" Shallow-Mount Component Subwoofer

1200W MAX.



FEATURES:

- Double Cone Construction Using Carbon Fiber and Aramid Fiber Composite IMPP Cones
- Double Cone Reinforcement Nodes for Structural Rigidity (Patent Pending)
- Air Suspension Excursion Control System (Patent Pending)
- 3-Layer Fiber Woven Radial Surround
- 4-Layer, Long Voice Coil
- Single Voice Coil Design (4Ω)
- 8-Slit Glass Imide Voice Coil Bobbin
- Dual Surround (Spiderless) Suspension
- Extended and Vented Pole Yoke
- Bottom Hold Design Aluminum Die-Cast One-Piece Rigid Chassis
- Silver Binding Posts
- One-Piece Rubber Gasket
- Accessory Grill (UD-G306) Available
- Shallow Sealed Enclosure (UD-SW12) Available

SPECIFICATIONS:

- 1200 Watts Max. Music Power
- 300 Watts Nominal Power Handling
- Frequency Response: 18 - 1,000Hz
- Sensitivity: 88dB
- Recommended Enclosure: 0.6 - 1.0 Cubic Feet

TS-W126C/TS-W126DVC NEW FOR 2005

Premier® 12" Component Subwoofers

1000W MAX.



- Accessory Grille (UD-G306) Available
- Recommended Enclosure: 0.85 - 1.75 Cubic Feet
- **TS-W126C**
- 4Ω Rated
- **TS-W126DVC**
- Dual-Voice Coil Design (4Ω)



The TS-W126C Subwoofer with UD-G306 Spoke Grille. Grille also fits TS-W126DVC.

SPECIFICATIONS:

- 1000 Watts Max. Music Power
- 400 Watts Nominal Power Handling
- Frequency Response: 18 - 500Hz
- Sensitivity: 89dB

TS-W106C/TS-W106DVC NEW FOR 2005

Premier® 10" Component Subwoofers

800W MAX.



- Accessory Grille (UD-G256) Available
- Recommended Enclosure: 0.65-1.25 Cubic Feet
- **TS-W106C**
- 4Ω Rated
- **TS-W106DVC**
- Dual-Voice Coil Design (4Ω)



The TS-W106C Subwoofer with UD-G256 Spoke Grille. Grille also fits TS-W106DVC.

SPECIFICATIONS:

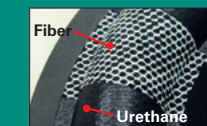
- 800 Watts Max. Music Power
- 350 Watts Nominal Power Handling
- Frequency Response: 18 - 600Hz
- Sensitivity: 87dB

SHARED FEATURES (TS-W126C/TS-W126DVC/TS-W106C/TS-W106DVC):

- Composite IMPP™ Cone Using Interlaced Aramid Fiber
- 3-Layer Fiber Woven Radial Surround
- 4-Layer, Long Voice Coil
- 12-Slit Aluminum Voice Coil Bobbin
- Dual Mass High-Power Magnet
- Conex Damper with Damper Ring
- Extended and Vented Pole Yoke
- Molded Gasket
- Magnet Cover

3-Layer Fiber Woven Radial Surround and Newly Designed Cone

To reduce distortion and flexing that can occur during extreme performance, we've created a surround construction similar in concept to a radial tire. It consists of two layers of urethane sandwiching one layer of interwoven fiber that evenly distributes strength through the surround material, eliminating potential weak points.



Fiber Woven Radial Surround (Patent Pending)

Additionally, the new TS-W subwoofers come with a newly designed cone applying Pioneer patent-pending technology. It is divided into a parabolic-shaped main cone and a flexible drive cone that can be curved or straight, which enables even deeper bass.

Dual Voice Coil. In search of perfect bass

DVC subwoofers have two voice coils of 4-ohms each, which may be connected in parallel to create a 2-ohm sub, or in a series, an 8-ohm sub. Thanks to advanced Dual Voice Coil (DVC) design you can use a low impedance amplifier to create exceptionally impressive sound reproduction with one or two more subs. When used in combination with a low load impedance compatible amp, DVC can give your subwoofers even more powerful bass reproduction capability. This flexibility gives you the power to create truly superior sound with hard driving bass.

TS-W300R

12" IMPP Component Subwoofer

600W MAX.



SPECIFICATIONS:

- 600 Watts Max. Music Power
- 150 Watts Nominal Power Handling
- Frequency Response: 20 - 4,000Hz
- Sensitivity: 91dB
- 4Ω Rated
- Accessory Grille (UD-G306) Available (see inset on the left)
- Recommended Enclosure: 1.5 Cubic Feet

TS-W250R

10" IMPP Component Subwoofer

500W MAX.



SPECIFICATIONS:

- 500 Watts Max. Music Power
- 120 Watts Nominal Power Handling
- Frequency Response: 20 - 4,500Hz
- Sensitivity: 90dB
- 4Ω Rated
- Accessory Grille (UD-G256) Available (see inset on the left)
- Recommended Enclosure: 1.0 Cubic Feet

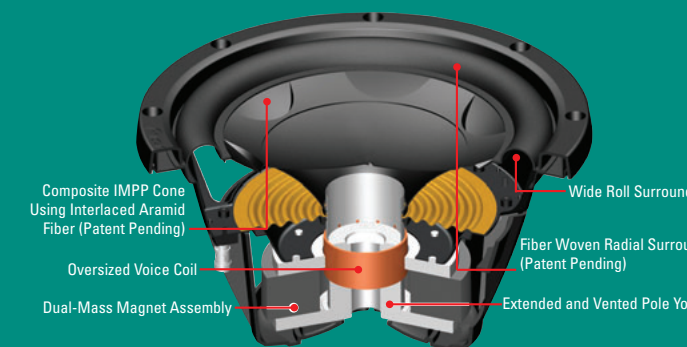
SHARED FEATURES (TS-W300R/TS-W250R):

- IMPP Composite Cone Woofer
- Dual-Layer Urethane Surround
- 4-Layer, Long Voice Coil
- Aluminum Voice Coil Bobbin
- Conex Damper with Damper Ring
- Extended and Vented Pole Yoke
- Bumped Backplate
- Molded Gasket

Dual-Mass Magnet Assembly

Simply glance at our sub and you'll see our big idea. The Dual-Mass Magnet Assembly is nearly twice the size of a conventional subwoofer. It combines with the Extended Pole Yoke to create a significantly more powerful and focused magnetic force. It's this force that controls the voice coil and drives the woofer cone, bringing powerful, clean bass to thunderous life.

Cross Section of TS-W126DVC Subwoofer



Composite IMPP Cone Using Interlaced Aramid Fiber (Patent Pending) | Wide Roll Surround | Fiber Woven Radial Surround (Patent Pending) | Oversized Voice Coil | Dual-Mass Magnet Assembly | Extended and Vented Pole Yoke

TS-WX121

12" Bass-Reflex Enclosed Subwoofer

400W MAX.



- FEATURES:**
- 12" Foamed IMPP Composite Cone (Silver Grey)
 - One-Piece Construction for Reduced Distortion

- Dual-Layer Urethane Surround
- Integrated Direct Voice Coil Mounting Ring
- Conex Damper with Damper Ring
- Lead Wires Integrated into Damper for High Reliability and Improved Power Transfer
- Glass-Imide Voice Coil Bobbin
- Projected Pole Yoke with Vented Pole
- Bass-Reflex Design with Side Port
- Thick Wood Enclosure for Richer Bass Response
- Ideal Design for Sport-Utility Vehicles (SUV's) and Hatchbacks

- SPECIFICATIONS:**
- 400 Watts Max. Music Power (100 Watts Nominal)
 - Frequency Response: 20 - 1,500Hz
 - Sensitivity: 106dB (In-car)
 - 4Ω Rated
 - Dimensions: 18-7/8" x 13-1/2" x 14-1/8"

TS-WX101

10" Bass-Reflex Enclosed Subwoofer

350W MAX.



- FEATURES:**
- 10" Foamed IMPP Composite Cone (Silver Grey)
 - One-Piece Construction for Reduced Distortion

- Dual-Layer Urethane Surround
- Integrated Direct Voice Coil Mounting Ring
- Conex Damper with Damper Ring
- Lead Wires Integrated into Damper for High Reliability and Improved Power Transfer
- Glass-Imide Voice Coil Bobbin
- Projected Pole Yoke with Vented Pole
- Bass-Reflex Design with Side Port
- Thick Wood Enclosure for Richer Bass Response
- Ideal Design for Sport-Utility Vehicles (SUV's) and Hatchbacks

- SPECIFICATIONS:**
- 350 Watts Max. Music Power (80 Watts Nominal)
 - Frequency Response: 20 - 1,800Hz
 - Sensitivity: 104dB (In-car)
 - 4Ω Rated
 - Dimensions: 18-7/8" x 12" x 16"

TS-TRX1000

Truck Riders® Series 3-Way Speaker System

250W MAX.



- FEATURES:**
- 10" IMPP Composite Cone Woofer
 - 2-5/8" Horn Midrange
 - 2-1/4" Horn Tweeter
 - Optimized Bass-Reflex Design to Ensure Rich and Powerful Bass Reproduction
 - Mounting Belts and Plates Included
- SPECIFICATIONS:**
- 250 Watts Max. Music Power (100 Watts Nominal)
 - Frequency Response: 35Hz - 24kHz
 - Sensitivity: 94dB
 - 4Ω Rated
 - Dimensions: 24" x 15" x 4-3/8"

TS-TRX800

Truck Riders® Series 2-Way Speaker System

200W MAX.



- FEATURES:**
- 8" IMPP Composite Cone Woofer
 - 2-1/4" Horn Tweeter
 - Optimized Bass-Reflex Design to Ensure Rich and Powerful Bass Reproduction
 - Mounting Belts and Plates Included
- SPECIFICATIONS:**
- 200 Watts Max. Music Power (75 Watts Nominal)
 - Frequency Response: 45Hz - 24kHz
 - Sensitivity: 92dB
 - 4Ω Rated
 - Dimensions: 17-1/2" x 13-1/2" x 4"

TS-TRX40

Truck Riders® Series 2-Way Speaker System

100W MAX.



- FEATURES:**
- 5" IMPP Composite Cone Woofer
 - 2-1/4" PPS (Polyphenylene Sulfide) Dome Tweeter
 - Water Resistant Diaphragms for Woofer and Tweeter
 - Versatile Mounting Bracket enables Top or Bottom Mounting
- SPECIFICATIONS:**
- 100 Watts Max. Music Power (35 Watts Nominal)
 - Frequency Response: 75Hz - 23kHz
 - Sensitivity: 90dB
 - 4Ω Rated
 - Dimensions: 11-1/4" x 7-1/2" x 4-5/8"

TS-C1653

6-1/2" Component Speaker Package

150W MAX.



- FEATURES:**
- 6-1/2" Foamed IMPP Composite Cone Woofer (Titanium Grey)
 - Butyl Rubber Surround
 - 7/8" Soft Dome Tweeter with Neodymium Magnet and Magnetic Fluid
 - Surface (Angled) or Flush Swivel Mounting
 - Outboard Crossover Network Included with -18dB/Oct. HPF and -6dB/Oct. LPF Filters and Tweeter Protection Circuit
- SPECIFICATIONS:**
- Full-Depth Basket for Rich Bass Response
 - New Basket Provides Improved Fit on GM Oversized 6-1/2" Applications
 - 150 Watts Max. Music Power (50 Watts Nominal) (with 80Hz, -12dB/Oct. HPF); 120 Watts (40 Watts) without Crossover
 - Outboard Crossover Network Included with -18dB/Oct. HPF and -6dB/Oct. LPF Filters
 - Sensitivity: 90dB
 - 4Ω Rated

TS-C1353

5-1/4" Component Speaker Package

150W MAX.



- FEATURES:**
- 5-1/4" Foamed IMPP Composite Cone (Titanium Grey)
 - Butyl Rubber Surround
 - 7/8" Soft Dome Tweeter with Neodymium Magnet and Magnetic Fluid
 - Surface (Angled) or Flush Swivel Mounting
 - Outboard Crossover Network Included with -18dB/Oct. HPF and -6dB/Oct. LPF Filters and Tweeter Protection Circuit
- SPECIFICATIONS:**
- 150 Watts Max. Music Power (50 Watts Nominal) (with 80Hz, -12dB/Oct. HPF); 90 Watts (30 Watts) without Crossover
 - Sensitivity: 90dB
 - Frequency Response: 40Hz - 32kHz
 - 4Ω Rated

TS-T15

3/4" Component Soft Dome Tweeter

120W MAX.



- FEATURES:**
- Small-Sized (3/4") Polyester Fiber Soft Dome Tweeter with Neodymium Magnet and Magnet Fluid

- -6dB/Oct. Capacitor for Tweeter Protection (Included)
 - Flush and Surface Mounting Capabilities
- SPECIFICATIONS:**
- 120 Watts Max. Music Power (40 Watts Nominal) (with Network)
 - Frequency Response: 2,500Hz - 30kHz
 - Sensitivity: 90dB
 - 4Ω Rated

TS-T110

7/8" Component Hard Dome Tweeter

120W MAX.



- FEATURES:**
- 7/8" PPTA Hard Dome Tweeter with Strontium Magnet and Magnetic Fluid

- In-Line -6dB/Oct. Capacitor for Tweeter Protection
 - Flush or Flush Mounting Capabilities
- SPECIFICATIONS:**
- 120 Watts Max. Music Power (40 Watts Nominal) (with Included Crossover)
 - Frequency Response: 2,500Hz - 30kHz
 - Sensitivity: 90dB
 - 4Ω Rated

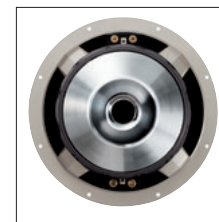
TS-W12PRS

Premier® 12" Subwoofer

1200W MAX.



DuPont™ KEVLAR®



TS-W12PRS features a 4-spoke aluminum die-cast basket.

- FEATURES:**
- Voice Coil Cooling System (VCCS)
 - KEVLAR® Brand Fiber Composite Cone Woofer
 - Dual-Layer Rolled Urethane Surround
 - Dual-Voice Coil Design (2Ω or 8Ω)
 - 4-Spoke Aluminum Die-Cast Basket
 - Gold-Plated Binding Posts
 - Small Enclosure Capability (1.0 Cubic Foot Recommended)

- SPECIFICATIONS:**
- 1200 Watts Max. Music Power
 - 300 Watts Nominal Power Handling
 - Frequency Response: 15 - 2,000Hz
 - Sensitivity: 92dB
 - 2Ω Rated (Parallel Wired)
 - 8Ω Rated (Series Wired)

TS-T3PRS

Premier® 1-1/4" Soft Dome Tweeter

200W MAX.



- FEATURES:**
- Polyester Fiber Soft Dome
 - Large Out-flux Neodymium Magnet with Magnetic Fluid
 - Aluminum Voice Coil Bobbin
 - Aluminum Die-Cast Flange
 - Removable Mesh
 - Aluminum Die-Cast Back Chamber
 - Gold-Plated Terminals

- SPECIFICATIONS:**
- 200 Watts Max. Music Power
 - 60 Watts Nominal Power Handling
 - Frequency Response: 1kHz - 30kHz
 - Sensitivity: 92dB
 - 8Ω Rated

TS-M7PRS

Premier® 6-3/4" Mid-Bass Driver

200W MAX.



DuPont™ KEVLAR®

Rear View

- FEATURES:**
- KEVLAR® Brand Fiber Composite Cone Woofer
 - Butyl Rubber, Symmetrical Balanced Surround
 - High-Energy Strontium Magnet
 - Glass-Imide Voice Coil Bobbin
 - Conex Damper
 - Projected Pole Yoke with Vented Pole
 - Aluminum Die-Cast Frame
 - Gold-Plated Binding Posts
- Tuned for Kick Panel Application (0.175 Cubic Feet)**
- SPECIFICATIONS:**
- 200 Watts Max. Music Power
 - 60 Watts Nominal Power Handling
 - Frequency Response: 28Hz - 10kHz
 - Sensitivity: 91dB
 - 4Ω Rated

UD-N2PRS

Premier® Passive Crossover Network

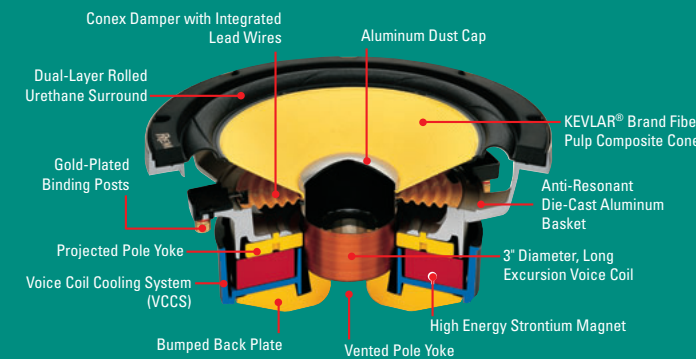
200W MAX.



- FEATURES:**
- 2-Way Passive Crossover (For Use with TS-M7PRS and TS-T3PRS)
 - Crossover Frequency 3kHz - 12dB/Oct. Low Pass Filter (LPF) - 12dB/Oct. High Pass Filter (HPF)
 - Selected Quality Devices
 - EMI (Electromagnetic Interference) Shielding Chassis
- Tweeter Level Adjustment (0, -3dB) and Tweeter Protection Circuit**
- SPECIFICATIONS:**
- 200 Watts Max. Power Handling
 - 60 Watts Nominal Power Handling

PRS Technology

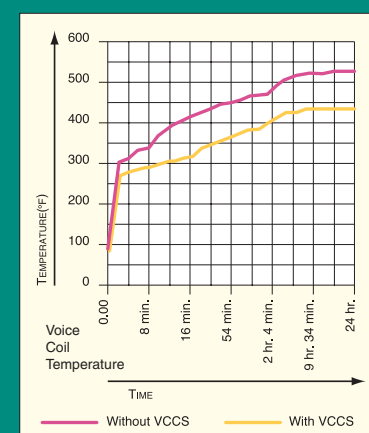
PRS loud speaker don't just look different, they are different. That's because every distinctive element of their design has a purpose. KEVLAR® Brand Fiber makes them stronger and lighter and more accurate and responsive. Innovations like a Dual-Layer Rolled Surround and Voice Coil Cooling System help them maintain exquisite tonal accuracy. Fact is, PRS speakers are so advanced there isn't another speaker worthy of their comparison.



Performance that's off the charts Voice Coil Cooling System



Typically, the longer and louder you play your sub, the hotter it gets. This changes its electrical and mechanical characteristics and adversely affects sound quality. Pioneer's Voice Coil Cooling System (VCCS) draws heat away from the inside of the sub, reducing temperatures by up to 100 degrees. In the simplest terms, it keeps your sound crisp and your sub from losing its cool.



TS-D901P NEW FOR 2005

Premier® 6" X 9" REV 2-Way Speaker

DuPont™ KEVLAR

350W MAX



FEATURES:

- Dual-Layer KEVLAR® Brand Fiber with Rigilite™ IMPP™ Composite Cone
- Butyl Rubber Surround for Smoother Response
- Glass-Imide Voice Coil Bobbin
- Conex Damper
- Copper Ring
- 1-1/8" Lightweight Soft Dome Tweeter with Neodymium Magnet and Rear Chamber
- Newly-Designed Wave Guides for Even Better Dispersion Control
- Built-in LC Network (-12dB/Oct. LPF & HPF)
- Newly-Designed Full-Depth Basket Boasting Much Higher Compressive Strength and Better Damping

SPECIFICATIONS:

- 350 Watts Max. Music Power (80 Watts Nominal)
- Frequency Response: 22Hz - 32kHz
- Sensitivity: 91dB
- 4Ω Rated

TS-D701P NEW FOR 2005

Premier® 6-3/4" REV 2-Way Speaker

DuPont™ KEVLAR

280W MAX.



FEATURES:

- Dual-Layer KEVLAR® Brand Fiber with Rigilite™ IMPP™ Composite Cone
- Butyl Rubber Surround for Smoother Response
- Glass-Imide Voice Coil Bobbin
- Conex Damper
- Copper Ring
- 1-1/8" Lightweight Soft Dome Tweeter with Neodymium Magnet and Rear Chamber
- Newly-Designed Wave Guides for Even Better Dispersion Control
- Built-in LC Network (-12dB/Oct. LPF & HPF)
- Newly-Designed Basket Boasting Much Higher Compressive Strength and Better Damping

SPECIFICATIONS:

- 280 Watts Max. Music Power (60 Watts Nominal)
- Frequency Response: 25Hz - 32kHz
- Sensitivity: 91dB
- 4Ω Rated

TS-D801P NEW FOR 2005

Premier® 6" X 8" REV 2-Way Speaker

DuPont™ KEVLAR

260W MAX.



FEATURES:

- Dual-Layer KEVLAR® Brand Fiber with Rigilite™ IMPP™ Composite Cone
- Butyl Rubber Surround for Smoother Response
- Glass-Imide Voice Coil Bobbin
- Conex Damper
- Copper Ring
- 1-1/8" Lightweight Soft Dome Tweeter with Neodymium Magnet and Rear Chamber
- Newly-Designed Wave Guides for Even Better Dispersion Control
- Built-in LC Network (-12dB/Oct. LPF & HPF)
- Newly-Designed Basket Boasting Much Higher Compressive Strength and Better Damping

SPECIFICATIONS:

- 260 Watts Max. Music Power (60 Watts Nominal)
- Frequency Response: 27Hz - 32kHz
- Sensitivity: 91dB
- 4Ω Rated

TS-D601P NEW FOR 2005

Premier® 6-1/2" REV 2-Way Speaker

DuPont™ KEVLAR

260W MAX.



FEATURES:

- Dual-Layer KEVLAR® Brand Fiber with Rigilite™ IMPP™ Composite Cone
- Butyl Rubber Surround for Smoother Response
- Glass-Imide Voice Coil Bobbin
- Conex Damper
- Copper Ring
- 1-1/8" Lightweight Soft Dome Tweeter with Neodymium Magnet and Rear Chamber
- Newly-Designed Wave Guides for Even Better Dispersion Control
- Built-in LC Network (-12dB/Oct. LPF & HPF)
- Newly-Designed Basket Boasting Much Higher Compressive Strength and Better Damping

SPECIFICATIONS:

- 260 Watts Max. Music Power (60 Watts Nominal)
- Frequency Response: 27Hz - 32kHz
- Sensitivity: 90dB
- 4Ω Rated

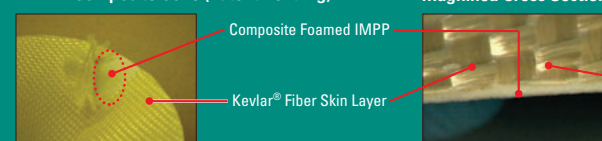
REV Series Evolution — for Even More Excitement

The new REV (TS-D) Series speakers boost the impact of sound with high power and smooth, accurate sound reproduction. The composite IMPP cones now feature 2nd generation KEVLAR® Brand Fiber composite cone with ceramic coating, which enables high spec in sound-propagation speed, internal loss, and rigidity. The result is more detailed, high-fidelity sound with lower resonance and better transient response in low and mid ranges.

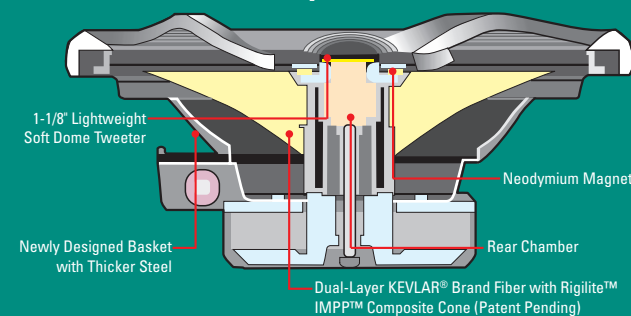
And the true beauty of REV Series speakers is the science built into their soft-dome tweeters. Ordinary speaker woofers play frequencies that extend into the higher ranges. REV Series speakers direct those crisp sounds exclusively to the tweeters, thanks to a diaphragm and rear chamber that controls damping and improves imaging and staging. The domes themselves are made of newly-applied lightweight material, and the gentle shape of the domes improves sound by preventing sharp, top-end peaks.

Also contributing to better sound is the newly designed basket with thicker steel — more than 1.4 times thicker than previous models — which results in more than three-times higher compressive strength and better damping.

Dual-Layer KEVLAR® Brand Fiber with Rigilite™ IMPP™ Composite Cone (Patent Pending)



Cross Section of REV Speaker



Wave Guides

To help control the dips in frequency response, REV Series tweeters rely on an innovation called wave guides. They affect the dispersion patterns of sound waves and provide a sound image that is clear and focused. Wave guides also enhance localization, depth in soundstage and generate a wider sweet spot than normal tweeters. The new REV Series comes with an updated version of wave guides, which boasts even higher performance.



TS-C160R NEW FOR 2005

6-1/2" REV Component Speaker Package

250W MAX.



FEATURES:

- 6-1/2" KEVLAR® Brand Fiber Composite Cone Woofer
- Butyl Rubber Surround for Smoother Response
- CCAW (Copper-Clad Aluminum Wire) Voice Coil
- Glass-Imide/Copper Voice Coil Bobbin
- Conex Damper
- VCCS™ (Voice Coil Cooling System) with Aluminum Dust Cap
- Projected Pole Yoke
- 1" Lightweight Soft Dome Tweeter with Magnetic Fluid and Neodymium Magnet
- Surface (Angled) or Flush Swivel Mounting
- Outboard Crossover Network Included with -12dB/Oct. HPF and -12dB/Oct. LPF, Tweeter Protection Circuit and Tweeter Level Adjustment (0, -3dB)
- Aluminum Die-Cast Full-Depth Basket for Rich Bass Response
- Gold-Plated Binding Posts
- Fits GM Oversized 6-1/2" Applications

SPECIFICATIONS:

- 250 Watts Max. Music Power (60 Watts Nominal)
- Frequency Response: 25Hz - 32kHz
- Sensitivity: 90dB
- 4Ω Rated

TS-C130R NEW FOR 2005

5-1/4" REV Component Speaker Package

180W MAX.



FEATURES:

- 5-1/4" KEVLAR® Brand Fiber Composite Cone Woofer
- Butyl Rubber Surround for Smoother Response
- Glass-Imide/Copper Voice Coil Bobbin
- Conex Damper
- VCCS™ (Voice Coil Cooling System) with Aluminum Dust Cap
- Projected Pole Yoke
- 1" Lightweight Soft Dome Tweeter with Magnetic Fluid and Neodymium Magnet
- Surface (Angled) or Flush Swivel Mounting
- Outboard Crossover Network Included with -12dB/Oct. HPF and -12dB/Oct. LPF, Tweeter Protection Circuit and Tweeter Level Adjustment (0, -3dB)
- Aluminum Die-Cast Full-Depth Basket for Rich Bass Response
- Gold-Plated Binding Posts

SPECIFICATIONS:

- 180 Watts Max. Music Power (40 Watts Nominal)
- Frequency Response: 35Hz - 32kHz
- Sensitivity: 90dB
- 4Ω Rated

TS-A6991R NEW FOR 2005

6" x 9" 5-Way Speaker **460W MAX.**



- FEATURES:**
- Composite IMPP Cone Woofer Using Interlaced Dual Aramid Fiber
 - Butyl Rubber Surround for Smoother Response
 - Glass-Imide Voice Coil Bobbin
 - Latex-Treated Conex Damper
 - 2-1/4" Lightweight Balanced Dome Midrange with Magnetic Fluid
 - 1-1/2" Film Cone Tweeter with Neodymium Magnet
 - 3/4" Dome Supertweeter
 - Full-Depth Basket for Rich Bass Response

TS-A941P NEW FOR 2005

Premier® 6" x 9" 4-Way Speaker **420W MAX.**



- FEATURES:**
- Composite IMPP Cone Woofer Using Interlaced Dual Aramid Fiber
 - Butyl Rubber Surround for Smoother Response
 - Glass-Imide Voice Coil Bobbin
 - Latex-Treated Conex Damper
 - 2-1/4" Lightweight Balanced Dome Midrange with Magnetic Fluid
 - 1-1/2" Film Cone Tweeter
 - 3/4" Dome Supertweeter
 - Full-Depth Basket for Rich Bass Response

TS-A6880R NEW FOR 2005

6" x 8" Custom-Fit 4-Way Speaker **240W MAX.**



- FEATURES:**
- Composite IMPP Cone Woofer Using Interlaced Aramid Fiber
 - Butyl Rubber Surround for Smoother Response
 - High-Energy Strontium Magnet (Woofer)
 - Glass-Imide Voice Coil Bobbin
 - Latex-Treated Conex Damper
 - 1-5/8" Foamed PPC (Pearl Poly-Carbon) Balanced Dome Midrange with Magnetic Fluid and Strontium Magnet
 - 5/8" Dome Tweeter
 - 3/8" Dome Supertweeter
 - Custom-Fit for Ford and Mazda Vehicles

TS-A6870R NEW FOR 2005

6" x 8" Custom-Fit 3-Way Speaker **220W MAX.**



- FEATURES:**
- Composite IMPP Cone Woofer Using Interlaced Aramid Fiber
 - Butyl Rubber Surround for Smoother Response
 - High-Energy Strontium Magnet (Woofer)
 - Glass-Imide Voice Coil Bobbin
 - Latex-Treated Conex Damper
 - 1-5/8" Foamed PPC (Pearl Poly-Carbon) Balanced Dome Midrange with Magnetic Fluid and Strontium Magnet
 - 3/8" Dome Tweeter
 - Custom-Fit for Ford and Mazda Vehicles

TS-A931P NEW FOR 2005

Premier® 6" x 9" 3-Way Speaker **300W MAX.**



- FEATURES:**
- Composite IMPP Cone Woofer Using Interlaced Dual Aramid Fiber
 - Glass-Imide Voice Coil Bobbin
 - 2-1/4" Lightweight Balanced Dome Midrange with Magnetic Fluid
 - 3/4" Cone Tweeter
 - Shallow Basket for Increased Installation Versatility

TS-A6961R NEW FOR 2005

6" x 9" 3-Way Speaker **230W MAX.**



- FEATURES:**
- Composite IMPP Cone Woofer Using Interlaced Aramid Fiber
 - Glass-Imide Voice Coil Bobbin
 - 2-1/4" Film Cone Midrange
 - 3/4" Cone Tweeter
 - Shallow Basket for Increased Installation Versatility

TS-G6840R NEW FOR 2005

6" x 8" Custom-Fit 2-Way Speaker **150W MAX.**



- FEATURES:**
- IMPP Composite Cone Woofer
 - High-Energy Strontium Magnet
 - Kapton Voice Coil Bobbin
 - Conex Damper
 - 1-1/2" Film Cone Tweeter
 - New Custom-Fit for Ford and Mazda Vehicles

TS-A5713 NEW FOR 2005

5" x 7" Custom-Fit 2-Way Speaker **120W MAX.**



- FEATURES:**
- Foamed IMPP Composite Cone Woofer
 - Urethane Surround for High Efficiency
 - High-Energy Strontium Magnet
 - 1-5/8" Cone Tweeter
 - Custom-designed Speaker Basket Fits Ford, Chrysler and Toyota (6" x 8" or 5" x 7") Factory Provisions

New Materials, New Shape — Better Sound

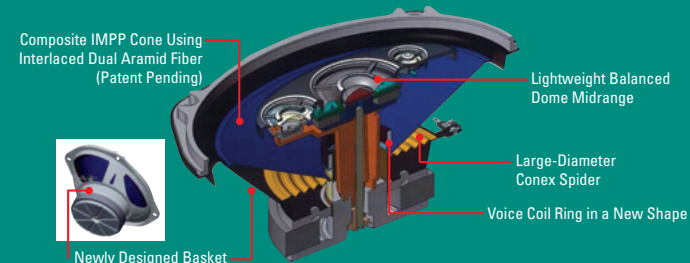
The new TS-A series speakers feature a composite IMPP cone woofer that uses two kinds of interlaced aramid fiber for even higher sound quality — one for sufficient volume in low frequency levels and the other for creating a smooth, natural, stereoscopic sound field with minute details. Use of the two materials also increases the rigidity and durability of the woofer, and the voice coil ring with reduced thickness permits better linearity.

The lightweight balanced dome midrange enables improved sensitivity and better transient. Its overall shape has been optimized through repeated simulations. The result is reduced sound-wave interference between the dome and the surrounding area.

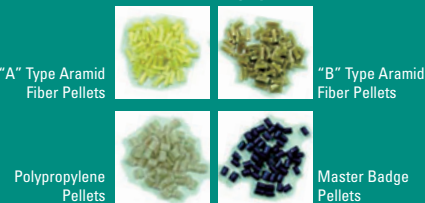
New Basket Design

Behind the TS-A series speakers' cool-looking face — featuring metallic sub grill and new spoke grills — is the newly designed basket, which ensures higher sound quality and easy installation on a wider variety of vehicles. The new basket design boasts higher compressive strength, while the wider installation coverage is enabled by smaller cutout holes that maintain the vibration area.

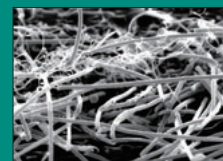
Cross Section of TS-A6991R Speaker



The IMPP cones of new TS-A series are made from two types of aramid fibers, polypropylene, and master badge pellets.



Microscopic Cross Section View



The new cone boasts even higher rigidity and durability.

TS-A1780R NEW FOR 2005

6-3/4" 4-Way Speaker **240W MAX.**



- FEATURES:**
- Composite IMPP Cone Woofer Using Interlaced Aramid Fiber
 - Butyl Rubber Surround for Smoother Response
 - High-Energy Strontium Magnet (Woofer)
 - Glass-Imide Voice Coil Bobbin
 - Conex Damper
 - 1-5/8" Foamed PPC (Pearl Poly-Carbon) Balanced Dome Midrange with Magnetic Fluid and Strontium Magnet
 - 3/8" Dome Tweeter
 - 3/8" Dome Supertweeter

6" x 8" Perfect Fit Speakers

There are a few things in life we'll never understand. Like why do stereo companies keep trying to force people to put 5" x 7" speakers in 6" x 8" holes? It doesn't look or sound right. That's why we've researched exactly what dimension speakers would work best with what cars. If it doesn't fit perfect, it's not gonna sound perfect. Trust us on this.



TS-A641P NEW FOR 2005

Premier® 6-1/2" 4-Way Speaker

260W MAX.



FEATURES:

- Composite IMPP Cone Woofer Using Interlaced Dual Aramid Fiber
- Butyl Rubber Surround for Smoother Response
- Glass-Imide Voice Coil Bobbin
- Latex-Treated Conex Dampener
- 1-5/8" Lightweight Balanced Dome Midrange with Magnetic Fluid
- 5/8" Dome Tweeter
- 3/8" Dome Supertweeter
- Full-Depth Basket for Rich Bass Response

TS-A631P NEW FOR 2005

Premier® 6-1/2" 3-Way Speaker

220W MAX.



FEATURES:

- Composite IMPP Cone Woofer Using Interlaced Dual Aramid Fiber
- Butyl Rubber Surround for Smoother Response
- Glass-Imide Voice Coil Bobbin
- Latex-Treated Conex Dampener
- 1-5/8" Lightweight Balanced Dome Midrange with Magnetic Fluid and Neodymium Magnet
- 3/8" Dome Tweeter
- Shallow Mounting Depth for Increased Installation Versatility

TS-A4103

4" x 10" 2-Way Speaker

120W MAX.



FEATURES:

- IMPP Composite Cone Woofer
- Urethane Surround for High Efficiency
- High-Energy Strontium Magnet (Woofer/Tweeter)
- Aluminum Voice Coil Bobbin
- Conex Dampener
- 1-5/8" Cone Tweeter

TS-P462

4" x 6" 2-Way Component Plate Speaker

150W MAX.



FEATURES:

- 4" Foamed IMPP Composite Cone
- Butyl Rubber Surround for Smoother Response
- High-Energy Strontium Magnet (Woofer)
- Latex-Treated Conex Dampener
- Kapton Voice Coil Bobbin
- 1" Soft-Dome Tweeter with Neodymium Magnet
- Built-In Passive Crossover (-6dB/Oct. LPF, -12dB/Oct. HPF)

TS-A4670R

4" x 6" 3-Way Speaker

120W MAX.



FEATURES:

- Composite IMPP Cone Using Interlaced Aramid Brand Fiber
- High-Energy Strontium Magnet (Woofer)
- Glass-Imide Voice Coil Bobbin
- Conex Dampener
- 1-1/8" Foamed PPC (Pearl Poly-Carbon) Balanced Dome Midrange with Magnetic Fluid and Neodymium Magnet
- 3/8" Film Dome Tweeter
- Custom-Fit US/European Compatible Basket Design

TS-G1640R

6-1/2" 2-Way Speaker

160W MAX.



FEATURES:

- IMPP Composite Cone Woofer
- High-Energy Strontium Magnet (Woofer)
- Kapton Voice Coil Bobbin
- Conex Dampener
- CCAW (Copper-Clad Aluminum Wire) Voice Coil
- 1-5/8" Film Cone Tweeter
- 6-3/4" Compatibility (GM Tabs)

TS-G1340R

5-1/4" 2-Way Speaker

130W MAX.



FEATURES:

- IMPP Composite Cone Woofer
- High-Energy Strontium Magnet (Woofer)
- Kapton Voice Coil Bobbin
- Conex Dampener
- 1-3/8" Film Cone Tweeter
- Shallow Mounting Depth for Wider Installation Coverage

TS-G4640R

4" x 6" 2-Way Speaker

100W MAX.



FEATURES:

- IMPP Composite Cone Woofer
- High-Energy Strontium Magnet
- Kapton Voice Coil Bobbin
- Conex Dampener
- 1-3/8" Film Cone Tweeter
- New Custom-Fit US/European Compatible Basket Design

TS-A1057

4" 2-Way Speaker

100W MAX.



FEATURES:

- Foamed IMPP Composite Cone Woofer
- High-Compliance Urethane Surround for High Efficiency
- High-Energy Strontium Magnet (Woofer)
- Glass-Imide Voice Coil Bobbin
- Latex-Treated Conex Dampener
- 1" Foamed PPC (Pearl Poly-Carbon) Balanced Dome Tweeter with Neodymium Magnet and Magnetic Fluid
- 4 & 2-Hole Compatibility with Removable Screw Holes

TS-G1040R

4" 2-Way Speaker

100W MAX.



FEATURES:

- IMPP Composite Cone Woofer
- Kapton Voice Coil Bobbin
- Cotton/Conex Dampener
- 1-1/8" Film Cone Tweeter
- 4 & 2-Hole Compatibility with Removable Screw Holes

Foamed PPC

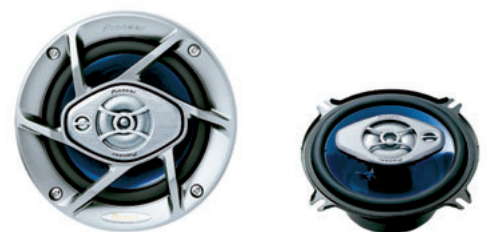
PPC (or Pearl Poly-Carbon to us engineers) is a lightweight material that delivers high sensitivity, open sound character and smooth extended frequency response in tweeters. Not only that, but it has a high inner loss that reduces distortion. It's also blended with special carbon fiber for UV resistance and protection against the harsh environment of your car. Think of it as the perfect soundstage for the crisp highs you demand.



TS-A530P

Premier® 5-1/4" 3-Way Speaker

160W MAX.



FEATURES:

- Interlaced Aramid Fiber Reinforced Cone Woofer
- Butyl Rubber Surround for Smoother Response
- High-Energy Strontium Magnet (Woofer)
- Glass-Imide Voice Coil Bobbin
- Conex Dampener
- 1-5/8" Foamed PPC (Pearl Poly-Carbon) Cone Midrange with Magnetic Fluid and Strontium Magnet
- 3/8" Dome Tweeter

TS-A878

3-1/2" Dash-Mount 2-Way Speaker

60W MAX.



FEATURES:

- 3-1/2" Carbon-Graphite Blended IMPP Composite Cone Woofer
- High-Energy Strontium Magnet (Woofer)
- Glass-Imide Voice Coil Bobbin
- Conex Dampener
- 1" PEI (Poly-Ether Imide) Dome Tweeter
- Ultra-Slim Neodymium Magnet (Tweeter)
- Custom-Fit for GM, Ford and Volkswagen Vehicles

TS-877

3-1/2" Dash-Mount Dual-Cone Speaker

40W MAX.



FEATURES:

- 3-1/2" Cone Woofer
- Custom-Fit for GM, Ford and Volkswagen Vehicles

TS-X200

Surface-Mount 3-Way Speaker

80W MAX.



FEATURES:

- 4" IMPP Composite Cone Woofer
- 3-1/4" Cone Midrange
- 3/4" Horn Tweeter
- Top-Mounting Bracket
- Bass-Reflex Cabinet
- 80 Watts Max. Music Power (20 Watts Nominal)
- Frequency Response: 65Hz - 30kHz
- Sensitivity: 89dB
- 4Ω Rated

TS-X150

Surface-Mount 3-Way Speaker

60W MAX.



FEATURES:

- 5-1/4" IMPP Composite Cone Woofer
- 1-1/8" Horn Midrange
- 3/4" Horn Tweeter
- Top-Mounting Bracket
- 60 Watts Max. Music Power (20 Watts Nominal)
- Frequency Response: 75Hz - 20kHz
- Sensitivity: 89dB
- 4Ω Rated

TS-MR2040

Nautica® Series
8" Marine-Use 2-Way Speaker **200W MAX.**



- FEATURES:**
- White Water-Resistant IMPP Cone Woofer
 - Water-Resistant Elastomer Surround
 - Glass-Imide Voice Coil Bobbin
 - Conex Damper
 - 3/4" PEI (Poly Imide) Reflex Horn Tweeter Design
 - High-Quality Corrosion-Resistant Hardware
 - Gold-Plated Tinsel Leadwire and Terminals
 - Weather-Proof and Heat-Resistant Resin

TS-MR1640

Nautica® Series
6-1/2" Marine-Use 2-Way Speaker **160W MAX.**



- FEATURES:**
- White Water-Resistant IMPP Cone Woofer
 - Water-Resistant Elastomer Surround
 - Glass-Imide Voice Coil Bobbin
 - Conex Damper
 - 1-1/8" PEI (Poly-Ether Imide) Dome Tweeter with Magnetic Fluid and Equalizer
 - High-Quality Corrosion-Resistant Hardware
 - Gold-Plated Leadwire and Terminals
 - Weather-Proof and Heat-Resistant Resin

TS-MR1600

Nautica® Series
6-1/2" Marine-Use Dual-Cone Speaker **100W MAX.**



- FEATURES:**
- White Water-Resistant IMPP Cone Woofer
 - Water-Resistant Elastomer Surround
 - Glass-Imide Voice Coil Bobbin
 - Conex Damper
 - High-Quality Corrosion-Resistant Hardware
 - Gold-Plated Tinsel Leadwire and Terminals
 - Weather-Proof and Heat-Resistant Resin

CD-MR80D **NEW FOR 2005**

Wired Marine Remote Control



- FEATURES:**
- Compatible with Pioneer 1-DIN CD Receivers*
 - The display indicates channel number, track number, operation status, etc.
 - Satellite Radio Tuner Indications**
 - ATT (Volume Attenuator) Button
 - Dimensions (W x H x D): 3-7/8" x 2-13/16" x 1-13/16" (98 x 72 x 46mm)
- *For details about compatible units and available controls, contact your dealer or nearest Pioneer Service Center.
**Available in conjunction with DEH-P770MP, DEH-P670MP, DEH-P470MP, and DEH-P3700MP.

CD-MR70

Wired Marine Remote Control



- FEATURES:**
- Compatible with all Pioneer Wired Remote Ready Headunits
 - Weatherproof Sealed Design
 - Mini Plug Cable Supplied (7m Length)
 - Dimensions (W x H x D): 4" x 2-5/8" x 1-13/16" (102 x 67 x 46mm)

AD-MR92

Nautica® Series Waterproof Marine Stereo Cover



- FEATURES:**
- Fully Weatherproof Cover Designed Exclusively for Marine Environment
 - Exclusive "Vertical Opening Locking Bubble"
 - Stainless Steel Mounting Hardware (Included)

AUDIO VIDEO ACCESSORIES

AD-GA10

Offset Installation Kit
For use with AVIC-N2, AVH-P7600DVD and AVH-P5700DVD.

CD-V61FM

Add-on FM Modulator
Compatible with any 2ch Audio Source.

CD-VS33

Video Switcher
Universal switcher with 3 A/V inputs, 3 video inputs, 2 headphone outputs with volume control and independent AV selector.



TS-CX7

Center Channel Speaker
Combine the high quality TS-CX7 with the AVH-P7600DVD for true surround sound.



NAVIGATIONAL ACCESSORIES

ND-BC1

Universal Rear View Camera
Features include high resolution, compact size and reversed-image capability.



CD-VC1

Voice Command Pack
Package includes voice recognition mic and steering wheel remote. For use only with AVIC-N2.

CD-TS37GP

Navigation Guidance Speaker
Optional guidance speaker for use when the AVIC-N2 is connected to a multi-channel processor.

CD-SR11 **NEW FOR 2005**

Steering Remote for Pioneer Navigation Systems
Compatible with AVIC-D1, AVIC-N1, and AVIC-N2.

CD-RV1

Rear Seat Mini Remote
Allows rear seat passenger to control AVIC-N2's DVD playback functions. For use only with AVIC-N2.



CNDV-50MTP **NEW FOR 2005**

Touch Panel Navigation Upgrade Discs
Upgrade discs for Pioneer Touch Panel Navigation Systems. Include database and feature upgrade equivalent to AVIC-N2 and AVIC-D1 (XM NavTraffic™ capability only available with AVIC-N1). Compatible with AVIC-N1, and AVIC-88DVD, AVIC-80DVD, AVIC-90DVD, and AVIC-9DVD when used with Touch Panel Display only (AVD-W6210, AVH-P7600DVD, AVH-P7500DVD, AVH-P6600DVD, AVH-P6500DVD, AVH-P5700DVD).

CNDV-40R **NEW FOR 2005**

Remote Control Navigation Upgrade Discs
Upgrade discs for Pioneer Remote Control Navigation Systems. Include database and feature upgrade equivalent to AVIC-N1 and AVIC-88DVD. Compatible with AVIC-80DVD, AVIC-90DVD and AVIC-9DVD when used with Remote Control Displays only (AVD-W6010, AVH-P6400CD, AVH-P6400, AVX-P7300DVD).

CD-SC300E

Trunk-Mount Extension System Cable (3 meter)
Extension between main unit and the hideaway box.

CD-600DC **NEW FOR 2005**

Data Communication Cable (6 meter)
For Connecting AVIC-D1/AVIC-N2 with GEX-P10XMT.

CD-TS37GP

Navigation Guidance Speaker
Optional guidance speaker for use when the AVIC-N2 is connected to a multi-channel processor.

CD-RGB26P

26-Pin RGB Connection Box
Required when connecting the AVIC-880DVD to 20-pin RGB components.

CD-TS36

Voice Guidance Speaker with IR Sensor for AVIC-9DVD, AVIC-90DVD, AVIC-80DVD and AVIC-880DVD
For use with Non-Pioneer Displays (CD-RGB26P is also required for Non-Pioneer Displays.)

AUDIO VIDEO/NAVIGATION CABLES

CD-AB300

AV-Bus Cable (3 meter)
Male-to-Male. For use with AVH-P7600DVD and AVH-P5700DVD when connecting to XDV-P90.

CD-AB301E

AV-Bus Extension Cable (3 meter)
Female-to-Male Extension Cable. For use with AV products.

CD-AB50

AV-Bus Cable (0.5 meter)
Male-to-Male. For use with AVH-P7600DVD and AVH-P5700DVD when connecting to XDV-P90.

CD-IP601E

IP-Bus Extension Cable (6 meter)
Female-to-Male Extension Cable. For use with AV products.

CD-RGB31E

20-pin RGB Extension Cable (3 meter)
Female-to-Male RGB Extension Cable. All 20-pin RGB Cables can be extended with this cable.

REMOTE CONTROL

CD-R5 **NEW FOR 2005**

Remote Control
Required for stand-alone control and functionality when using AVH-P5700DVD.

CD-R11

Full Function Audio Video and Navi Remote
Necessary when using AVIC-880DVD with non-Pioneer or non-touch monitors.

CD-R600

Full Function Smart Remote Control
For use with remote ready IP-Bus Headunits and AVM-P7000R. (No Video Control)



CD-R7

DVD Remote with IR Sensor
For use with XDV-P90 when used in stand-alone mode.

CD-R99

DVD/TV Tuner Remote Control
Works with all Pioneer DVD sources. Main use for rear seat passengers.

CD-SR100

Steering Wheel Remote Control
For use with AVH-P6400CD, AVH-P6400, AVH-P6500DVD, AVH-P6600DVD, AVM-P7000R, and all IP-Bus source units. With DVD NAVI Voice Controller.

CELLULAR ACCESSORIES

CD-CM1

Add-on Cellular Mute Kit
For use with all cellular mute compatible headunits. (Analog phones only)

SPEAKER GRILLES

UD-G306 **NEW FOR 2005**

12" Spoke Grille
For use with TS-W126C, TS-W126DVC and TS-W300R.

UD-G256 **NEW FOR 2005**

10" Spoke Grille
For use with TS-W106C, TS-W106DVC and TS-W250R.

IP-BUS EXTENSION CABLES

CD-IP600

IP-Bus Cable (6 meter)
Male-to-Male Extension Cable.

CD-IP150

IP-Bus Extension Cable (1.5 meter)
Female-to-Male Extension Cable.

MCD MAGAZINES

JD-1212S

12 Disc Magazine
For use with FM and Straight 12 Disc Changers, 1996 to current.

JD-612V

6 Disc Magazine
For use with XDV-P90, FM and Straight 6 Disc Changers, 1996 to current.

JD-T1212

12 Disc Magazine
For use with FM and Straight 12 Disc Changers, 1995 and earlier.

JD-T612

6 Disc Magazine
For use with FM and Straight 6 Disc Changers, 1995 and earlier.

JD-M3000CEEA

6 Disc Magazine
For use with CDX-M30 only.

AUXILIARY INPUT ADAPTERS

CD-RB20

IP-Bus-to-RCA Adapter
Allows connection of external audio source and MCD player to IP-Bus headunit.

CD-RB10

IP-Bus-to-RCA Adapter
Allows connection of external audio source to IP-Bus headunit.

Nautica Series

To us, "mobile audio" extends out onto water, and our high-grade Nautica Series marine speakers are designed specifically for this application. They are water- and corrosion-resistant, with magnets that are sealed away from moisture. Even the parts and terminals are marinated, for long life and great music.



Speakers	Size	Max. Music Power (Nominal)	Frequency Response	Sensitivity	Impedance	Mounting Depth	Cut-Out Dimensions
TS-D901P	6" x 9"	350W (80W)	22Hz - 32kHz	91dB	4Ω	3-1/2" (88.8mm)	6" x 8-7/8" (153mm x 225mm)
TS-D801P	6" x 8"	260W (60W)	27Hz - 32kHz	91dB	4Ω	2-9/16" (65.5mm)	5-1/4" x 7-1/2" (133mm x 191mm)
TS-D701P	6-3/4"	280W (60W)	25Hz - 32kHz	91dB	4Ω	2-9/16" (64.5mm)	5-1/2" (139mm)
TS-D601P	6-1/2"	260W (60W)	27Hz - 32kHz	90dB	4Ω	2-5/16" (59mm)	5-1/16" (128mm)
TS-C160R	6-1/2"	250W (60W)	25Hz - 32kHz	90dB	4Ω	2-3/8" (60.5mm)	5-1/16" (128mm) [†]
TS-C130R	5-1/4"	180W (40W)	35Hz - 32kHz	90dB	4Ω	2-1/4" (56.5mm)	4-3/4" (121mm) [†]
TS-A6991R	6" x 9"	460W (80W)	25Hz - 35kHz	93dB	4Ω	3-7/16" (87mm)	6" x 8-7/8" (153mm x 225mm)
TS-A941P	6" x 9"	420W (80W)	25Hz - 33kHz	93dB	4Ω	3-3/8" (86mm)	6" x 8-7/8" (153mm x 225mm)
TS-A931P	6" x 9"	300W (40W)	28Hz - 33kHz	93dB	4Ω	2-7/8" (73mm)	6" x 8-7/8" (153mm x 225mm)
TS-A6961R	6" x 9"	230W (40W)	28Hz - 28kHz	93dB	4Ω	2-7/8" (73mm)	6" x 8-7/8" (153mm x 225mm)
TS-A6880R	6" x 8"	240W (50W)	30Hz - 30kHz	91dB	4Ω	2-1/2" (62mm)	7-1/2" x 5-1/4" (191mm x 133mm)
TS-A6870R	6" x 8"	220W (50W)	30Hz - 28kHz	91dB	4Ω	2-1/2" (62mm)	7-1/2" x 5-1/4" (191mm x 133mm)
TS-G6840R	6" x 8"	150W (30W)	35Hz - 22kHz	90dB	4Ω	2-3/8" (59mm)	7-1/2" x 5-1/2" (191mm x 139mm)
TS-A5713	5" x 7"	120W (40W)	35Hz - 24kHz	92dB	4Ω	2-1/4" (58.5mm)	7-1/4" x 5" (183mm x 126mm)
TS-A1780R	6-3/4"	240W (50W)	28Hz - 30kHz	91dB	4Ω	2-1/2" (62.5mm)	5-1/2" (139mm)
TS-A641P	6-1/2"	260W (50W)	30Hz - 33kHz	91dB	4Ω	2-1/4" (57mm)	5-1/16" (128mm)
TS-A631P	6-1/2"	220W (35W)	30Hz - 33kHz	90dB	4Ω	1-3/4" (44mm)	5-1/16" (128mm)
TS-G1640R	6-1/2"	160W (30W)	35Hz - 22kHz	92dB	4Ω	1-5/8" (42mm)	5-1/16" (128mm)
TS-G1340R	5-1/4"	130W (25W)	40Hz - 22kHz	91dB	4Ω	1-7/8" (46mm)	4-3/4" (121mm)
TS-A530P	5-1/4"	160W (35W)	40Hz - 30kHz	91dB	4Ω	2-1/16" (53mm)	4-3/4" (121mm)
TS-A4103	4" x 10"	120W (35W)	38Hz - 23kHz	91dB	4Ω	2-1/2" (64mm)	6-7/8" x 3-3/8" (175mm x 85mm)
TS-P462	4" x 6"	150W (50W)* 80W (20W)**	70Hz - 32kHz 45Hz - 32kHz**	89dB	4Ω	1-5/8" (42mm)	4" x 6" (100mm x 153mm)
TS-A4670R	4" x 6"	120W (20W)	45Hz - 30kHz	90dB	4Ω	1-3/4" (45mm)	3-3/4" x 6" (95mm x 153mm)
TS-G4640R	4" x 6"	100W (20W)	45Hz - 22kHz	90dB	4Ω	1-3/4" (45mm)	4-7/8" x 2-7/8" (123 x 73mm)
TS-A1057	4"	100W (20W)	45Hz - 30kHz	90dB	4Ω	1-11/16" (42.8mm)	4" (102mm)
TS-G1040R	4"	100W (20W)	45Hz - 22kHz	90dB	4Ω	1-5/8" (43mm)	4-1/8" (106mm)
TS-A878	3-1/2"	60W (15W)	60Hz - 28kHz	88dB	4Ω	1-3/8" (36mm)	3" (77mm)
TS-877	3-1/2"	40W (10W)	90Hz - 20kHz	88dB	4Ω	1-1/2" (37mm)	3" (77mm)
TS-MR2040	8"	200W (40W)	25Hz - 30kHz	92dB	4Ω	2-15/16" (75mm)	7-5/16" (186mm)
TS-MR1640	6-1/2"	160W (30W)	30Hz - 30kHz	91dB	4Ω	2-3/16" (56mm)	5-1/8" (130mm)
TS-MR1600	6-1/2"	100W (25W)	30Hz - 20kHz	90dB	4Ω	2-3/16" (56mm)	5-1/8" (130mm)

* With 400Hz, -6dB/Oct. HPF; ** Without Crossover [†] Woofer dimensions

are registered trademarks of Dolby Laboratories. is a registered trademark of Digital Theater Systems, Inc. The XM name and related logos are trademarks of XM Satellite Radio Inc. "Sirius" and related marks are trademarks of Sirius Satellite Radio Inc.

Pioneer Electronics (USA) Inc. proudly supports and encourages you to support the Consumer Electronics Association (CEA), Mobile Electronics Certification Program (MECP) for installers and the Mobile Electronics Retailers Association (MERA).

PIONEER SERVICE FACILITIES
For the name and address of your nearest service center or for other service-related information, contact :

The Innovations Design and Engineering Award is based upon descriptive materials submitted to the judges. CEA did not verify the accuracy of any submission or of any claims made and did not test the item to which the award was given.

Pioneer Customer Service Department
Post Office Box 1760 Long Beach, California 90810
Telephone: 1-800-PIONEER

Published 2005 by Pioneer Corporation.
Copyright by Pioneer Corporation and Pioneer Electronics (USA) Inc. All Rights Reserved.

Note: Specifications and design subject to modification without notice. Product colors and illumination may differ in photographs from actual appearance, due to effects of printing and photography.