



*Desarrollo Biológico de dos especies de  
parasitoides*

*MANEJO INTEGRADO DE PLAGAS EN CULTIVO DE MANGO*

*Piura, 06-08 de Septiembre del 2004*

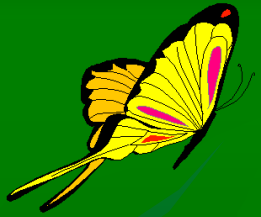
*Elizabeth Núñez Sacarías de Dios*

*Manejo Integrado de Plagas*

*[enunez@senasa.gob.pe](mailto:enunez@senasa.gob.pe)*

The background of the slide is a solid green color with a faint, stylized pattern of overlapping leaves and stems in a slightly darker shade of green. The leaves are elongated and pointed, with visible veins.

# ***Desarrollo de Aphytis spp***



## *Especies de Aphytis*

*Aphytis lepidosaphes*

*Aphytis crysomphali*

*Aphytis diaspidis*

*Aphytis lignanensis*

*Aphytis mitilaspidis*

*Aphytis holoxanthus*

*Aphytis melinus*



*Aphytis aonidiae*



*Aphytis roseni*

# *Ciclo Anual de una Plaga*

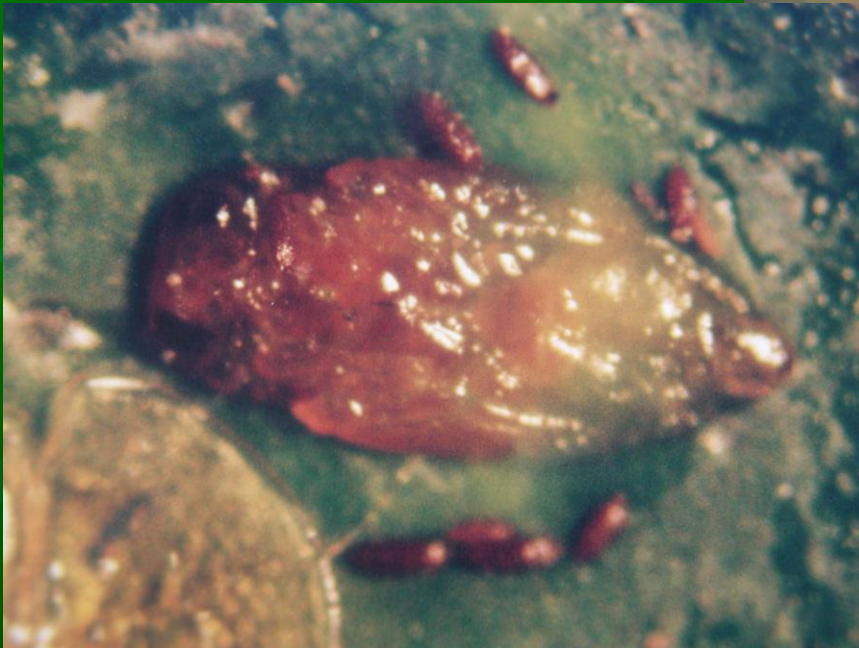
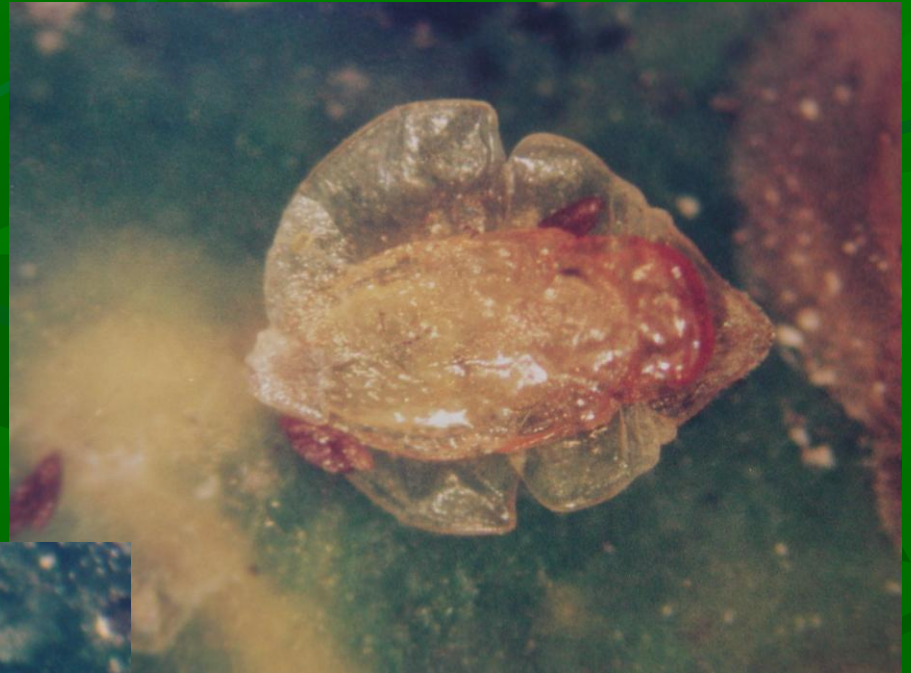






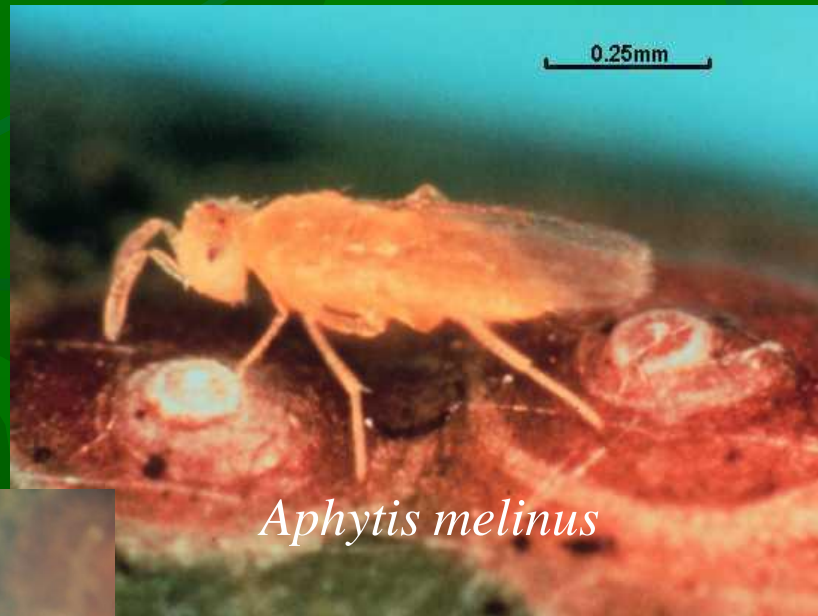
*ESTADIOS LARVALES Y PREPUPA DE  
Aphytis*





*ESTADO PUPAL DE Aphytis*

*ADULTOS DE Aphytis*





***Desarrollo de  
Diachasmimorpha longicaudata***



# Moscas de la Fruta Tephritidae



*Ceratitidis capitata*



E.R. Hickel

*Anastrepha fraterculus*

# *Ceratitis capitata*



Ovipositando

## Ciclo biológico



Adulto emergiendo





*Diachasmimorpha longicaudata*  
**PARASITACIÓN**



*HUEVOS de Diachasmimorpha longicaudata*





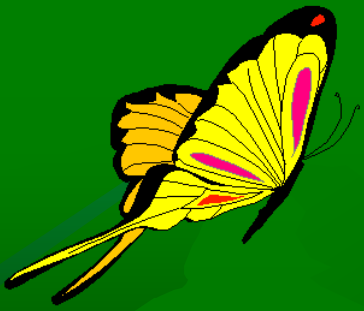
*LARVA*

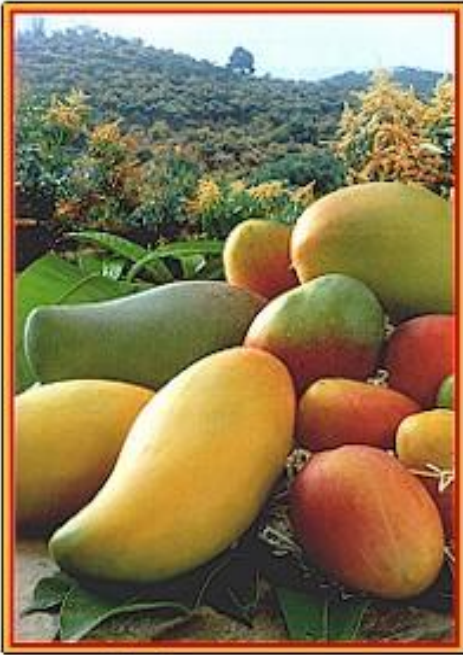


*PREPUPA*



*PUPA*





**Mangos**



***Muchas Gracias***