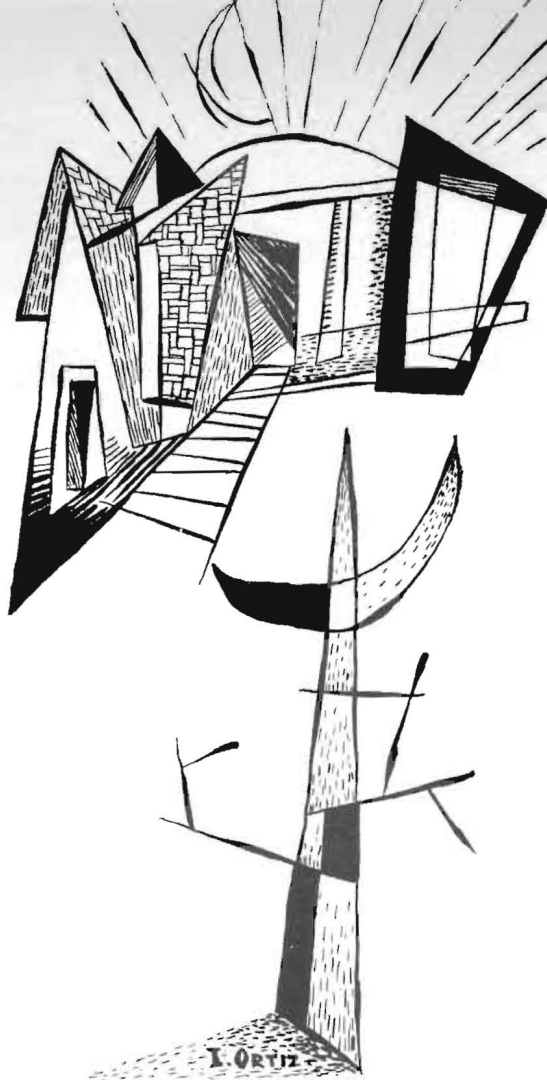


1952 Moundbuilder



Published by the student body of
SOUTHWESTERN COLLEGE
Winfield, Kansas

Charlene McCaleb
Editor

Robley Rhine
Assistant Editor

Harold Tretbar
Photographer

Isaac Ortiz
Art Editor

David Mackie
Advisor

40134
SOUTHWESTERN COLLEGE LIBRARY

4



Mossman Hall of Science

LD5111
S55
H6
1952



Student Union

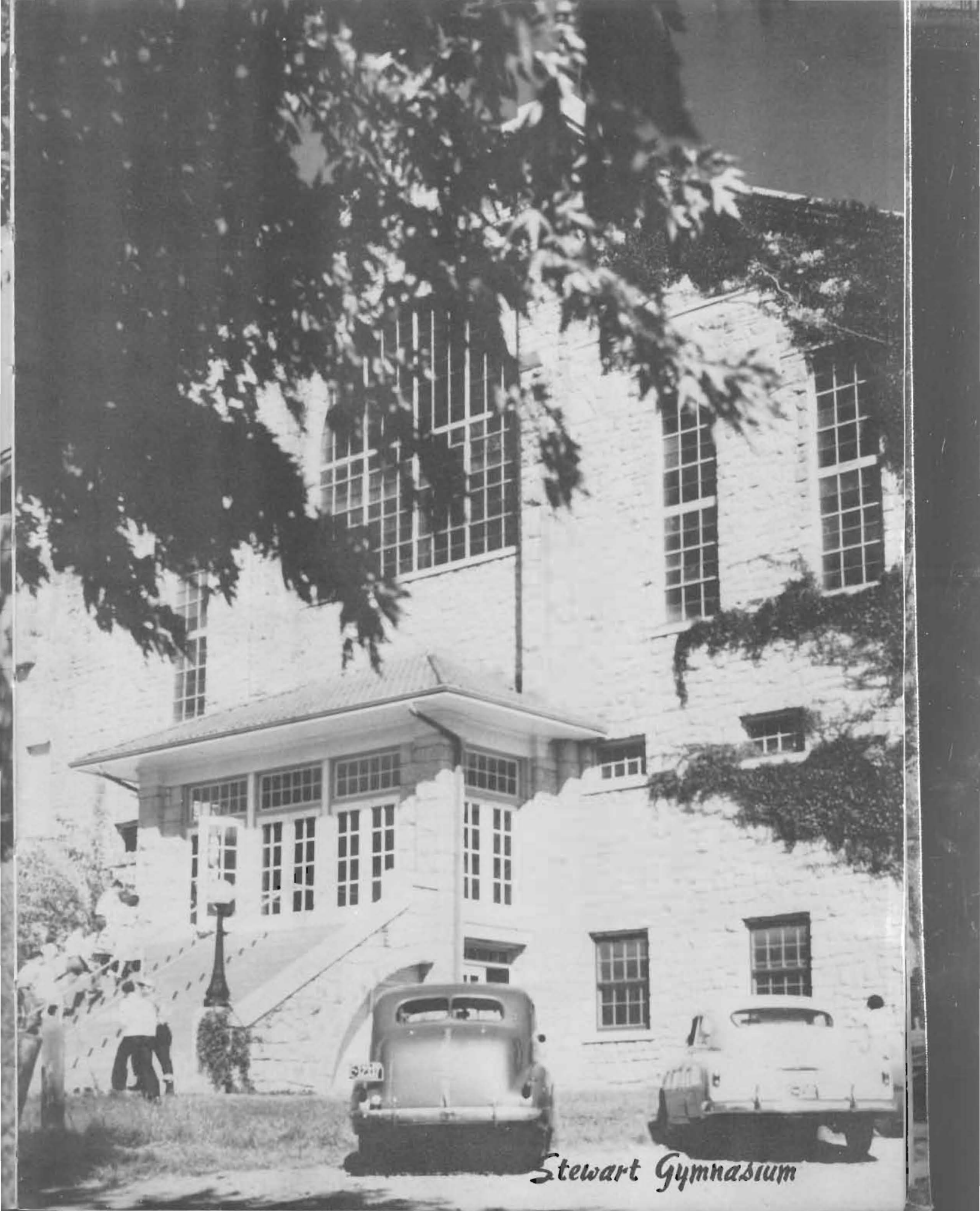
44 1752



Memorial Library



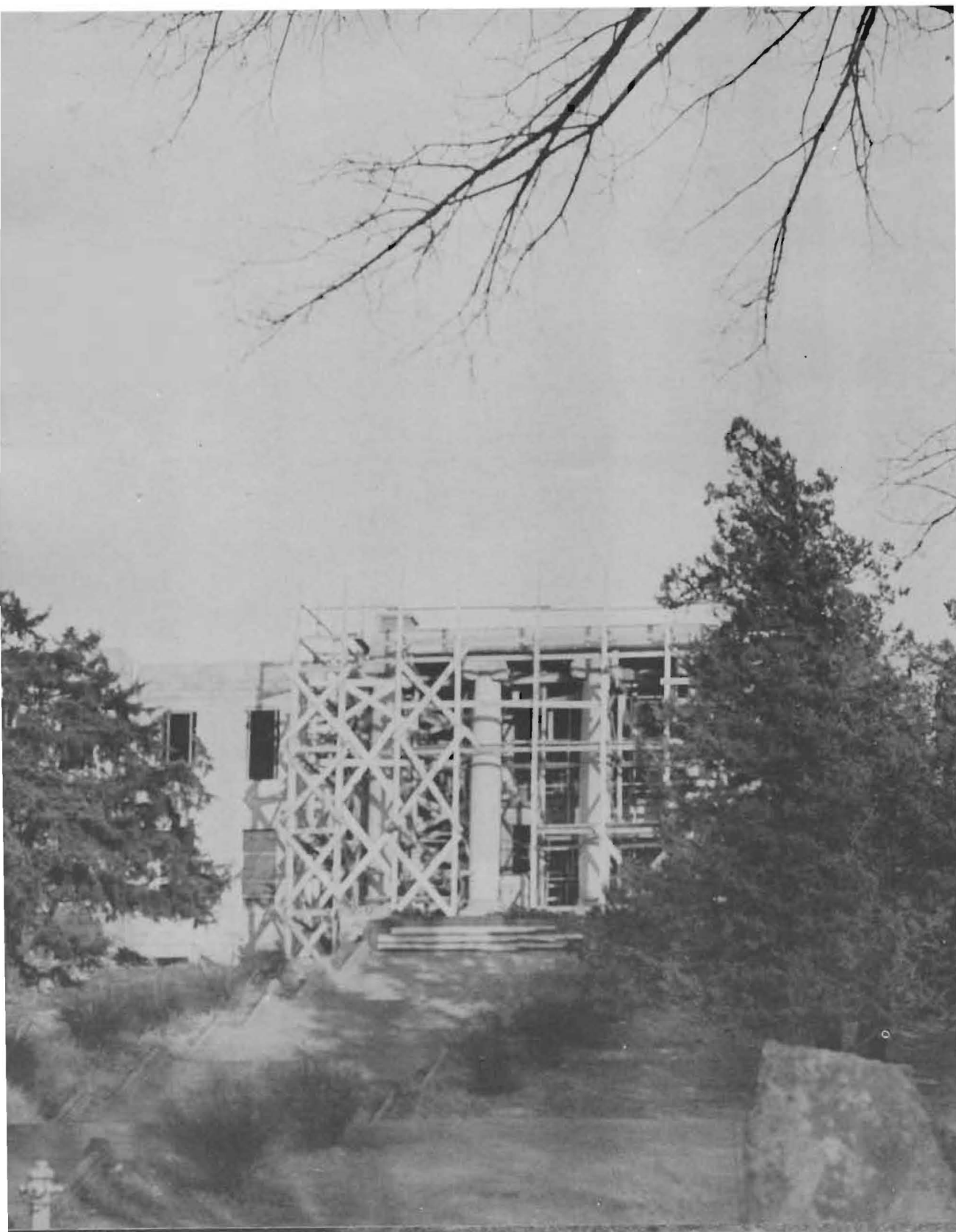
Music Hall



Stewart Gymnasium

Dedicated to

th



the Builders

Our school has risen after the fire of April 15, 1950, and we are grateful to all those who made it possible – graduates who were determined that we should rebuild, citizens of Winfield and people of the church conference who proved their appreciation of the school, administration and faculty loyal to the school when it needed them, and students of the college who realized temporary hardships as a challenge to scholarship and cooperation.



Administration



Dr. Alvin W. Murray, President

Dr. Murray was first at the college as a student, later as minister of Grace Methodist Church, and now is serving as the president of the college.

Shortly after his inauguration he was confronted with the loss of two buildings and most of the college equipment. President Murray courageously led the campaigns to preserve and to rebuild Southwestern. The college, now one of the most modern of the mid-west, stands as a symbol of the untiring efforts of our president.



President and Mrs. Murray attend faculty open house for students.

Mrs. Murray pours at Homecoming tea.





William Monypeny, Dean of the College

The door of Dean Monypeny's office is always open to the students of Southwestern who desire counselling. The dean performs many duties including the administering of the Placement Bureau for graduating students and the teaching of educational psychology.

William J. Poundstone, Registrar

Guiding students through the intricate process of obtaining the proper courses for graduation is a part of Mr. Poundstone's work. Through his position as Alumni Secretary he maintains a close relationship between school and alumni.



William Cloud, Counsellor of Men

Bill Cloud, because of his ability as, teacher, advisor, counsellor of men, and master of Wesley Hall, the men's dormitory, is well known to everyone on campus.



Mildred Skinner, Counsellor of Women

Mrs. Skinner supervises the women's dormitories and teaches home economics. As counsellor of women she is an intimate acquaintance of all the girls.



Irving S. Jackson, Business Manager

Mr. Jackson inspecting new equipment and new buildings has become a familiar sight to students. His cooperation on numerous administrative committees has made him everyone's friend.





Blaine Nolan, Ph.D.

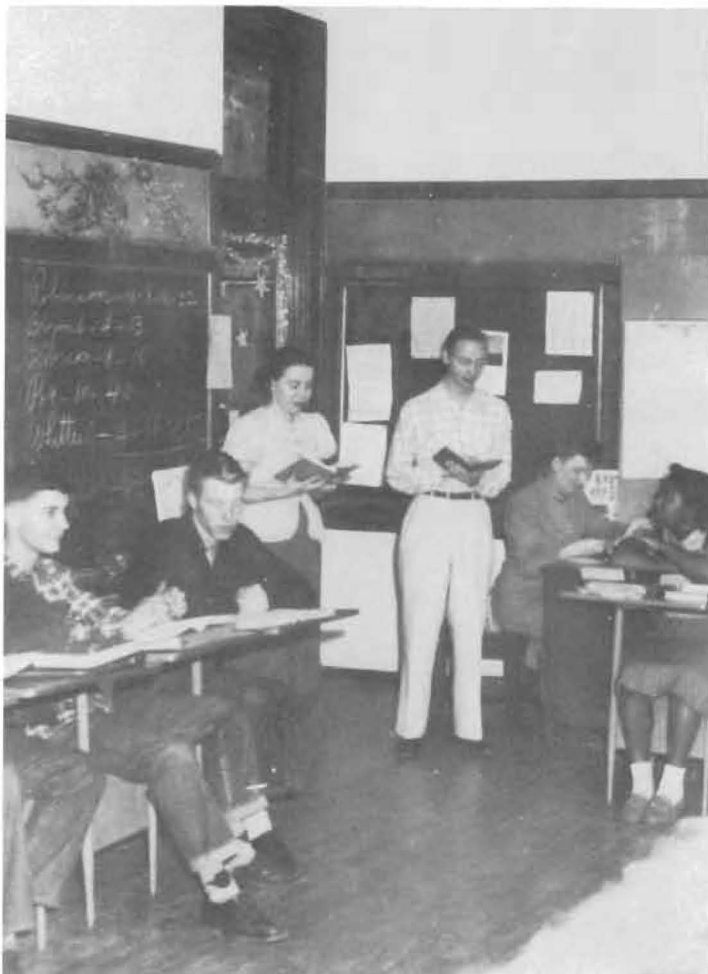
Psychology and Ed.

Social Science



Murrell Snyder, M.A.

Social Science



Southwestern students gain experience in teaching in Winfield public schools.



J. M. Highfill, M.A.

Accounting

The
the st
individu

St
differ
psych
econ



Jack Howe, M.A.

History and Government



Lloyd Edwards, M.A.

Commerce

The social science division was founded in order that the student may gain a more meaningful awareness as an individual and as a social being.

Students' attitudes and actions are determined by the different areas of the division, which include education and psychology, philosophy, Bible and religion, business and economics, history and government, and sociology.



Anna Clute, M.A.

Elementary Education

Dale Dunlap, M.A.

Bible and Philosophy





Eleanor Hoag, Ed.D.

English

Languages and Literature



Clarence Simpson, Ph.D.

English



Student reading is increased by the new Memorial Library.



Helen Graham, M.A.

Dramatics

Since
listen is sev
Division of
the educative
To th
bution is mad
dramatics, r
literature and



Allen Stowell, S.T.M.

Librarian



Edna Sorber, M.A.

English and Speech



Holmes Wilhelm, M.A.

Modern Languages



David Mackie, M.A.

Publicity Director

Since one who cannot effectively read, write, speak and listen is severely handicapped in all his learning endeavors, the Division of Languages and Literature serves as the keystone of the educative process.

To the development of these communicative skills, contribution is made by all the areas of the division, the library, speech, dramatics, radio broadcasting, journalism, modern languages, literature and composition.



Helen Evers, M.S.

Home Economics



LeRoy Spitze, Ph.D.

Chemistry



Bernard Riedel, Ph.D.

Biology

Natural Science



Students work in well-equipped laboratories.



William Carroll, B.S.

Assistant Coach



Lillian Cloud, M.A.

Physical Education

Knowledge of man's relationship to science is increasingly necessary in our time.

The various areas included in the division, biology, chemistry, geology, and health and physical education contribute to the students' knowledge.



William Cloud, M.S.

Physics, Math



Mrs. Mildred Skinner, M.S.

Home Economics

Harold Hunt, M.A.

Director of Athletics





Orcenith Smith, S.M.D.

Voice



Sue Jean Covacevich, M.A.

Art



Grace Sellers Mus. M.

Piano

Fine Arts



Hours of practice precede a finished performance.



Gladwin Chaffin, M.A.,



Lucille Haney, B.S.,

Voice

Music and art have been offered by Southwestern from the time of its foundation and the growth of this work has been in proportion to the general growth of the college.

Courses are offered for those desiring to prepare for graduate work and for those planning to teach.



**Ross Williams, Mus. M.
Violin, Orchestra**

Earl Dungan, M.A.

Wind Instruments, Band





E. Marie Burdette, Mus. B.

Piano



Fern Dielmann, Mus. B.

Piano



Edith Dielmann, B.O.

Expression

Students listen to records from the large collection at the Memorial Library.



Special Staff



SOUTHWESTERN SECRETARIES - Mrs. Edith Shields, Miss Evelyn Hamlin. **COLLEGE NURSE** - Miss Luella Scarrow.



PUBLIC RELATIONS OFFICE - George Weber, admissions counselor; M. W. Williams, assistant to the president.



William Brinkmeyer, supt. grounds and buildings; Charles Smith, assistant.



Mother Eva Rosecrans; Mother Mabel Casburn; Pauline Marten, director of food service; and Mother Mabel Cooper.



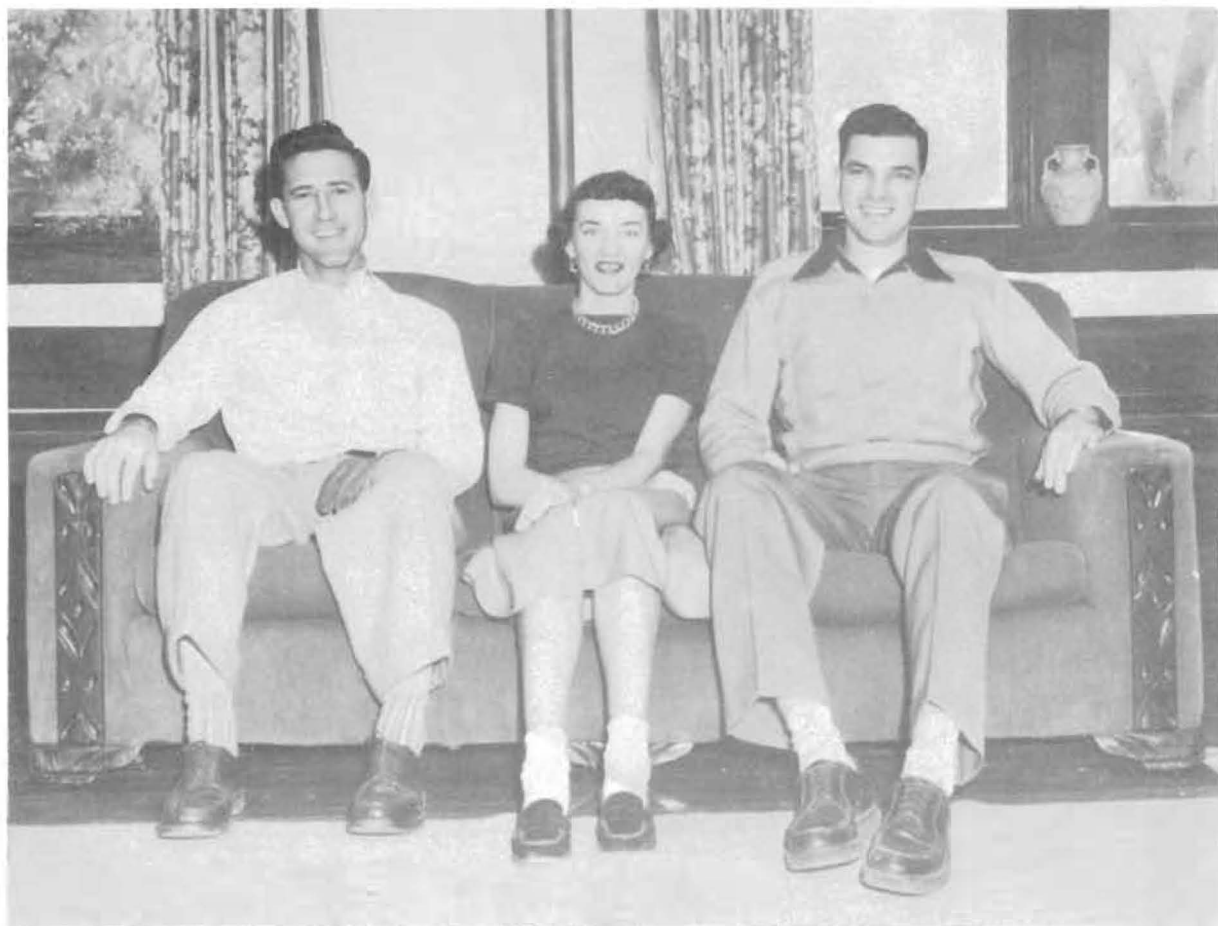
BUSINESS STAFF: Irving Jackson, business manager; J. Highfill, accountant; Mrs. Virginia Wadleigh, Mrs. Bernice Murray, bookkeeper; Mrs. Anna Lawrence, bookkeeper.



Classes

Seniors

Senior class officers for the first semester were Paul Book, vice-president; Charleen Kanaga, secretary; Donald Young, president.



Patricia Adams
Winfield, Kansas
Piano

Azizollah Afshar
Iran
Pre-Med



Wayne Baker
Pratt, Kansas
P. S. M.

Velma Becker
Wellington, Kansas
Home Economics



Paul Book
Elk Falls, Kansas
Phys. Ed., Industrial Arts

Alice Boyd
Larned, Kansas
Music



Dean Brinkmeyer
Winfield, Kansas
Business Administration

Doris Burdette
Grenola, Kansas
Elementary Ed.



Marilyn Daly Carr
Pratt, Kansas
Speech

George Craig
Winfield, Kansas
Business Administration



Patricia Day
Bucklin, Kansas
Education, Psychology

Gene Dillman
Hesston, Kansas
Phys. Ed.





Clifton Edens
Winfield, Kansas
Business Administration, Ed.

Robert Everly
Winfield, Kansas
Business



May Foo
China
Sociology

Frederick Fry
Winfield, Kansas
Business



Donita Gentzler
Winfield, Kansas
Home Economics

Lee Haney
Winfield, Kansas
Education



Juanita Hardy
Pratt, Kansas
Home Economics

Ed Harvey
Liberal, Kansas
Sociology



Michael Hawkins
El Dorado, Kansas
Elementary Education

Louis Hayward
Winfield, Kansas
Math and Education



Joy Hill
Winfield, Kansas
Education

Raymond Hough
Medicine Lodge, Kansas
Phys. Ed. and Education

Virgil Hutton
Winfield, Kansas
English and Education

Paul Irwin
Atlanta, Kansas
Social Science



Jo Ann Johnson
Winfield, Kansas
P. S. M.

Joan Fennema Jones
Winfield, Kansas
English and Education



Charleen Kanaga
Derby, Kansas
P. S. M.

Elmer Knowlton
Winfield, Kansas
Business



Mervin Kraus
Mulvane, Kansas
Business Administration

Billy Ledgerwood
Cambridge, Kansas
Phys. Ed.



Charlene McCaleb
Winfield, Kansas
English and Spanish

Ramona Hauser McFall
Mound City, Kansas
Sociology



Naomi McIntosh
Marion, Kansas
Social Sc. and Religion

Lois McNeil
Oakley, Kansas
Violin and P. S. M.





Gussie June Mayo
Garden City, Kansas
Social Science

Wanda Miller
Mayfield, Kansas
Social Science



Gregory Montoya
Corona, California
Spanish

Mildred Murphy
Mount Hope, Kansas
Phys. Ed.



Royce Orme
Murdock, Kansas
Phys. Ed.

Isaac Ortiz
Puerto Rico
Art



Howard Phillips
Winfield, Kansas
Business

Dean Ramsay
Johnson, Kansas
Social Science



Wayne Rogers
Winfield, Kansas
Business Administration

Bill Schul
Winfield, Kansas
Social Science



Mehdi (Joe) Sherkat
Iran
Pre-Med

Sharron Smith
Winfield, Kansas
Art

Eldon Snyder
 Winfield, Kansas
History and Education

Margaret R. Snyder
 Winfield, Kansas
Social Science



James Tiner
 Beachwood, New Jersey
Chemistry

Marjorie Tiner
 Mulvane, Kansas
Speech



Harold Tretbar
 Stafford, Kansas
Chemistry

Donald Young
 Wichita, Kansas
Social Science



SENIORS NOT PICTURED

Jack Amburgey	Jereldine Miller
Merle Cales	Thelma Morgan
Harvey Conyers	Mildred Osborn
Hazel Dole	Cora Overman
Donald Drennan	Ronald Overstreet
Kenneth Foster	Mary Parker
Harold Gibbon	Richard Phillips
Robert Gray	John Posey
Marjorie Gugler	Barbara Roby
Keith Hearne	Ida Schindler
Asuzu Ibeawuchi	Anna Smith
Glenn Leimer	Marjorie Tiner
Eleanor Livermore	Sharron Wynn

Robert Wright

A Cappella Choir calls a clean-up day.



Juniors

Junior class officers for the first semester were Phillip Rader, vice-president; Phyllis Bunker, secretary; Dean Drennan, president.



Harold Adams
Winfield, Kansas

Shirley Bailey
Winfield, Kansas
Ruth Beggs
Ensign, Kansas



William Bettis
Pine Bluff, Arkansas

Glenn Biberstein
Attica, Kansas
Virginia Brace
Moline, Kansas



Darlene Branson
Syracuse, Kansas

Phyllis Bunker
Wellington, Kansas
Merle Cales
Winfield, Kansas



Arthur Choate
Wichita, Kansas

Carolyn Combs
Wichita, Kansas
Verdeen Craine
Winfield, Kansas



Glenna Davis
Sublette, Kansas

Don Drennan
Winfield, Kansas
Wanda Ecker
Lyons, Kansas



Neil Frank
Wellington, Kansas

Harold Gibbon
Severy, Kansas
Joe Gillaspie
Elkhart, Kansas



Karol Gregory
Lyons, Kansas

Velma Grier
Haven, Kansas
Jerry Griffith
Winfield, Kansas





Marjorie Gugler
Chapman, Kansas

Duane Harms
Wellington, Kansas

Phyllis Hartnett
Ensign, Kansas



Asuzu Ibeawuchi
Nigeria

Charles Kanaga
Winfield, Kansas

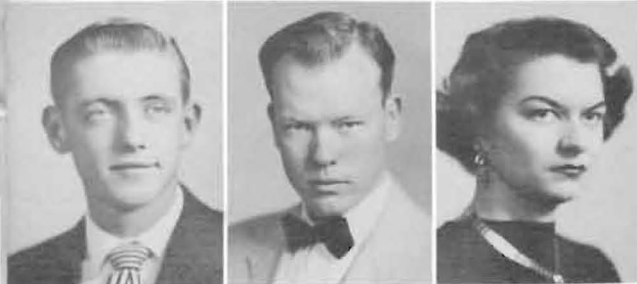
Constance Kerr
Cheney, Kansas



Robert Kesler
Cherryvale, Kansas

Thelma King
Winfield, Kansas

Wanda Kirkhart
Stafford, Kansas



Luther Kiser
Lyons, Kansas

Ladde Klitzke
Ness City, Kansas

Vela Mae Langhofer
Plains, Kansas



Alice McFall
Manzanola, Colorado

Sheldon McGuire
Riley, Kansas

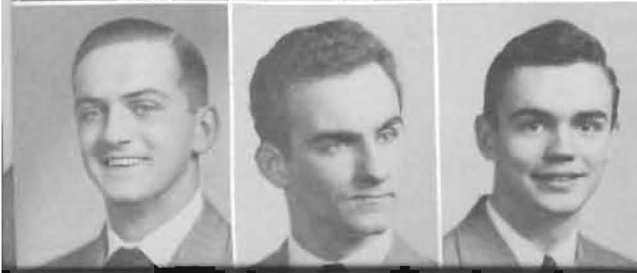
George Martin
Argonia, Kansas



Dale Mason
Wichita, Kansas

Dean Morgan
Winfield, Kansas

Frank Newman
Udall, Kansas



Richard Phillips
Kingston, Pennsylvania

Lee Price
Winfield, Kansas

Robert Puckett
Augusta, Kansas

Phillip Rader
Caldwell, Kansas

Vaughn Reed
Copeland, Kansas

Robley Rhine
Winfield, Kansas

Joseph Toledo
Jemez, New Mexico

Colleen Tarrant Warren
Turon, Kansas

Charles Yoder
Winfield, Kansas

Marlin Young
Winfield, Kansas



JUNIORS NOT PICTURED ARE:

Jack Amburgey
Kenneth Foster
William Glass
Charles Goforth
Keith Hearne
Price Heimer
Ken Johannsen

Owen Kelly
Howard King
Dale Kubik
Robert Kuhn
John Parker
Alice Pickens



Students prepare for the Freshman Watermelon Feed.

Builders relax in Student Union.

Homecoming Queen and her attendants watch the game



Sophomores

Sophomore class officers for the first semester were Marshall Detter, vice-president; Patricia Fox, secretary; Allan Lundeen, president.



Darlene Almack
Wellington, Kansas

Jack Ames
Cedar Vale, Kansas
Benette Banks
Oxford, Kansas



Doris Barnett
Clearwater, Kansas

Caroline Becker
Pratt, Kansas
Eugene Beye
Timken, Kansas



Mary Alice Branson
Winfield, Kansas

Bill Bunyan
Winfield, Kansas
Winchell Chung
Hawaii



Joan Cook
Garden City, Kansas

Barbara Crilly
Galva, Kansas
Laurene Crilly
Galva, Kansas



Venice Deem
Halstead, Kansas

Marshall Detter
Winfield, Kansas
James Farney
Wichita, Kansas



Patricia Fox
Anthony, Kansas

Rose Anna Fox
Ashland, Kansas
Marjorie Gillig
Kiowa, Kansas



Barbara Goodwin
Belle Plaine, Kansas

Betty Gotchall
Goodland, Kansas
Kathryn Green
Southport, Indiana





Elizabeth Harris
Moline, Kansas

Helen Hawes
Deerfield, Kansas

Harold Henderson
Severy, Kansas



Betty Herpolsheimer
Winfield, Kansas

Patricia Herrin
Mount Hope, Kansas

James Hudson
Medicine Lodge, Kansas



Jo Ann Huffman
Sedgwick, Kansas

Paschal Jackson
Charleston, South Carolina

Arthur Johnson
Winfield, Kansas



Carol Kanaga
Derby, Kansas

Rex Kelly
Kingman, Kansas

Carolyn Lovell
Burden, Kansas



Allan Lundeen
Fowler, Kansas

Marilyn McKaig
Attica, Kansas

Dawna McQuirk
Elk Falls, Kansas



Mildred Messer
Little River, Kansas

Pacifica Migia
Hawaii

Jeanette Nelson
Oak Park, Illinois



Jennis Phillips
Winfield, Kansas

Marilyn Powers
Winfield, Kansas

Betty Priest
Winfield, Kansas

Constance Redfield
Ashland, Kansas

James Rethorst
Wichita, Kansas

Leona Ricord
Hugoton, Kansas

Isolde Rose
Williamantic, Connecticut

Patricia Somerville
Copeland, Kansas

Marilyn Stayton
Winfield, Kansas

Patricia Troyer
Harper, Kansas

Resurreccion Valencia
Philippine Islands

Betty Walker
Anthony, Kansas

Cecil Wallace
Winfield, Kansas

Barbara Weikal
Bucklin, Kansas

Gene Yoder
Winfield, Kansas



SOPHOMORES NOT PICTURED ARE:

William Bloxom
Kathleen Calnon
Gordon Heeke
Edgar Hege

Robert James
Emma Parker
Luella Scarrow
Herbert Wands



Students support the team with cheers.

Freshmen suffer the agony of Kangaroo Court.



Freshmen

Freshmen officers for the first semester were Bill Witter, vice-president; Don Doughty, president; and Dave Phillips, secretary.



Marlin Bailey
Winfield, Kansas
U. W. Barron
Winfield, Kansas
Leona Beeman
Wichita, Kansas
Janet Bigler
El Dorado, Kansas



Nanon Bird
Sublette, Kansas
Ruth Brothers
Winfield, Kansas
Stanley Brown
Augusta, Kansas
Melvin Cheatham
Winfield, Kansas



Val Cheatham
Johnson, Kansas
Alma Chism
Anthony, Kansas
Sylvia Circle
Kiowa, Kansas
Dale Clare
Hutchinson, Kansas



Dishman Clark
Wellington, Kansas
Myron Cooper
Moscow, Kansas
Carla Curtis
Bluff City, Kansas
Richard Deatrick
Winfield, Kansas



Wanda Derby
Wellington, Kansas
Jacqueline Doughty
Howard, Kansas
Dorothea Drennan
Winfield, Kansas
Larry Eason
Winfield, Kansas



Mary Esther Edens
Winfield, Kansas
Darrell Falen
Stafford, Kansas
Paula Forsyth
Howard, Kansas
Joyce Friend
Burdette, Kansas



Elva Gagnebin
Cunningham, Kansas
Majilyn Gale
Wichita, Kansas
John Garralda
Howard, Kansas
Jeanette Gill
Wichita, Kansas





Donald Haneke
Ellis, Kansas
Joann Haun
Larned, Kansas
Miles Henry
Great Bend, Kansas
John Henson
Wellington, Kansas



Lois Holmes
Plains, Kansas
Patricia Hutchcroft
Huntington Park, Calif.
Bonnie Johnson
Sylvia, Kansas
Thelma Johnson
Caldwell, Kansas



Fred Kemp
Winfield, Kansas
Ned Kimbrell
Winfield, Kansas
Anna Kinnamon
Augusta, Kansas
Ray Kirk
Prescott, Arizona



Larry Lamborn
Wellington, Kansas
Wilma Larkin
El Dorado, Kansas
Nancy Livingston
Wichita, Kansas
Marlene Mansfield
Argonia, Kansas



James Matthews
Winfield, Kansas
Patricia Murray
Winfield, Kansas
Charles Muse
Marion, Kansas
Everett Newman
Udall, Kansas



Jetta Rae Nicholson
Moline, Kansas
Mary Olmstead
Argonia, Kansas
Chester Osborn
Dodge City, Kansas
Galen Palmer
Lyons, Kansas



Genevieve Patterson
Anthony, Kansas
David Phillips
Kingston, Pennsylvania
Elizabeth Ploughe
Hutchinson, Kansas
James Poovey
Oxford, Kansas

William Preston
Belle Plaine, Kansas
James Rathnam
India
Nancy Renn
Wellington, Kansas
Patricia Rittel
Marion, Kansas

Margaret Roderick
Winfield, Kansas
Lloyd Satterthwaite
Udall, Kansas
John Saville
Claflin, Kansas
Virginia Schifferdecker
Wichita, Kansas

Joline Schwatken
Elk City, Kansas
Floyd Seely
Caldwell, Kansas
Kathleen Shields
Winfield, Kansas
Janice Shuler
Winfield, Kansas

Merlin Sizelove
Wichita, Kansas
Larry Standiford
Winfield, Kansas
Ramona Stephenson
Rozel, Kansas
Jerry Stinson
Conway Springs, Kansas

Mary Thurtell
Akron, Colorado
Don Townsend
Wichita, Kansas
Darlene Vandergriff
Douglass, Kansas
Glynda Walker
Fowler, Kansas

Jack Walker
Anthony, Kansas
Richard Wells
Hutchinson, Kansas
Barbara Willan
Medicine Lodge, Kansas
Joyce Williams
Haven, Kansas

Maurice Wise
Lyons, Kansas
William Witter
Fowler, Kansas
Geraldine Woodworth
Dodge City, Kansas





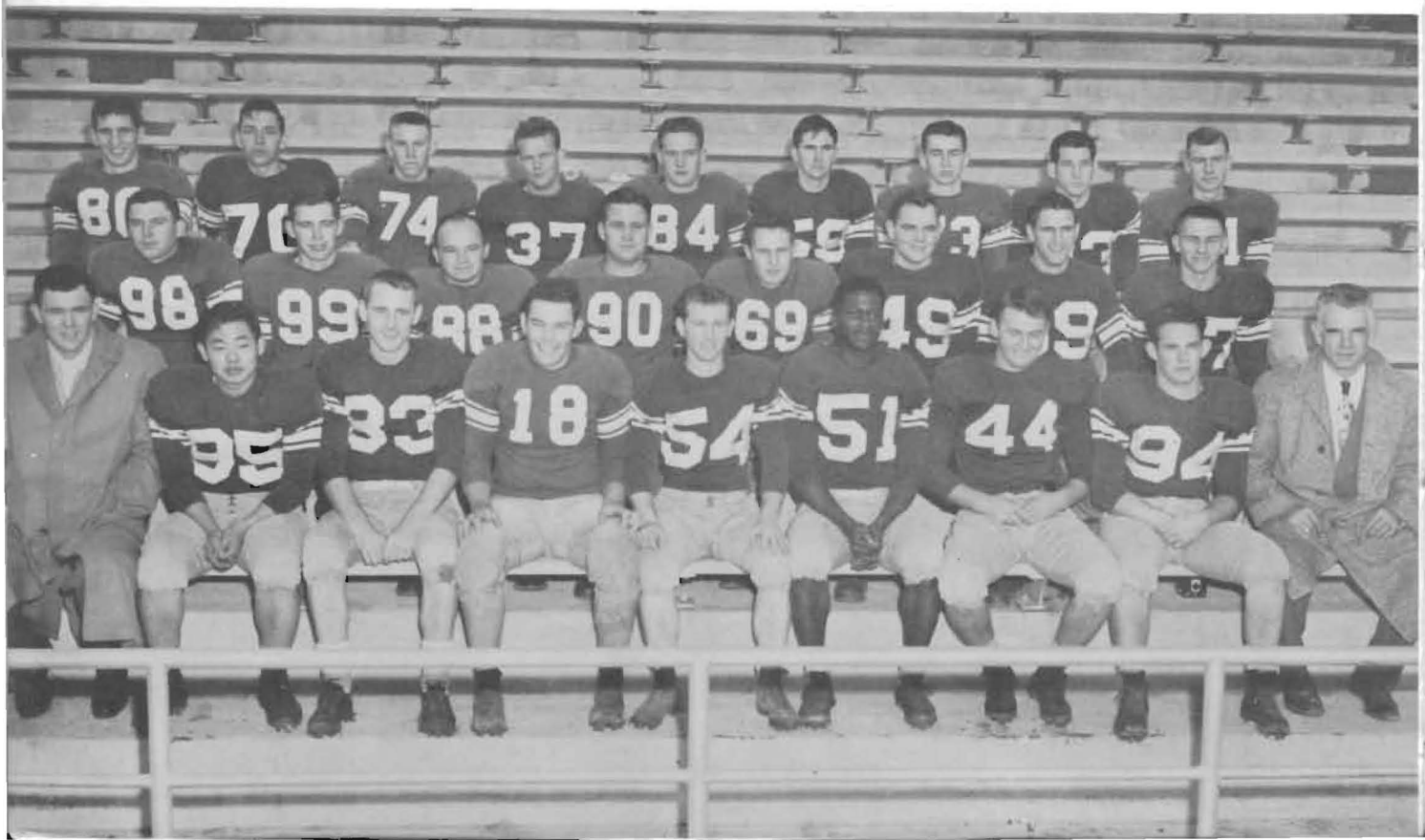
Sports



Football

		SC	OPPONENTS
Sept. 14	Warrensburg State	6	6
Sept. 21	Kansas Wesleyan	6	14
Sept. 29	Fort Hays	0	34
Oct. 6	Olathe Naval Base	12	18
Oct. 13	Emporia State	14	52
Oct. 20	Pittsburg State	0	55
Oct. 26	Northwestern State	13	7
Nov. 3	St. Benedict's	6	12
	(Homecoming)		
Nov. 9	Washburn	0	28

Pictured below are 1st Row: Coach Carroll, Chung, Witter, Gillaspie, Hough, Johnson, Dillman, Jackson and Coach Hunt.
 2nd Row: Orme, Cooper, Kuhn, Gray, Standiford, Williams, Tiner, Hudson.
 Back Row: Dvorak, Kirk, Saville, Beason, Bishop, Rader, Detter, Hearne, Hamill.



The Southwestern Moundbuilders under the direction of Coach Hunt and Assistant Coach Carroll, pictured at the right, fielded a small but fighting football squad. For their single victory of the season, the "Fighting 27" overpowered Alva in a driving rainstorm. The contest was highlighted by a magnificent 103-yard kick-off return by Art Johnson.

Coach Hunt brought nationwide recognition to himself and his school by a sportsmanlike gesture in the Warrensburg game by refusing an illegally made touchdown, pictured below, which would have meant victory for his squad. Coach Hunt was named by "This Week" magazine as "Football's Man of the Year."

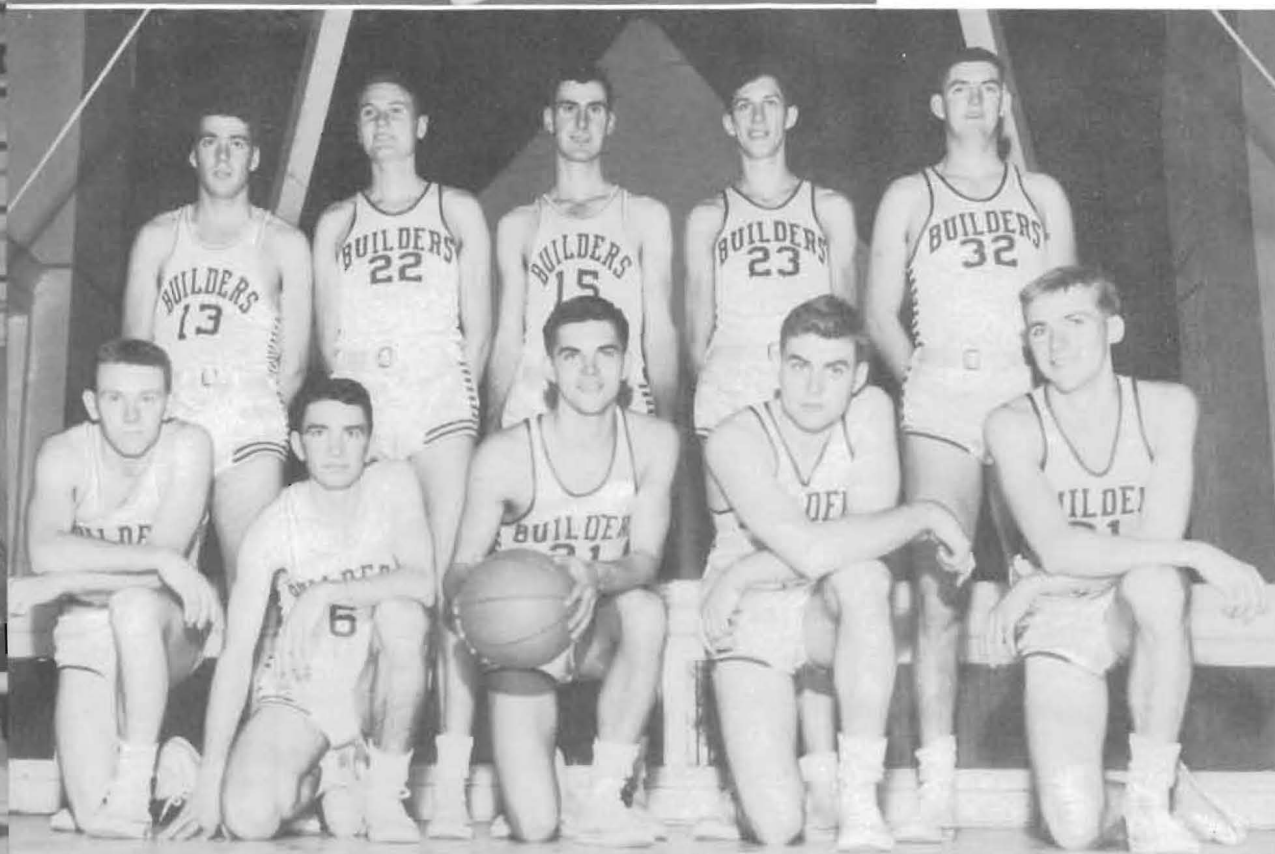




Basketball

Craig and opponents battle for the ball.

Builder basketball team members, pictured below are: 1st ROW: Saville, Newman, Farney, Edens, Frank. 2nd ROW: Cullop, Poovey, Kesler, Craig, and Bloxom.



Be
Air
re
tec

S. C. Cage Schedule

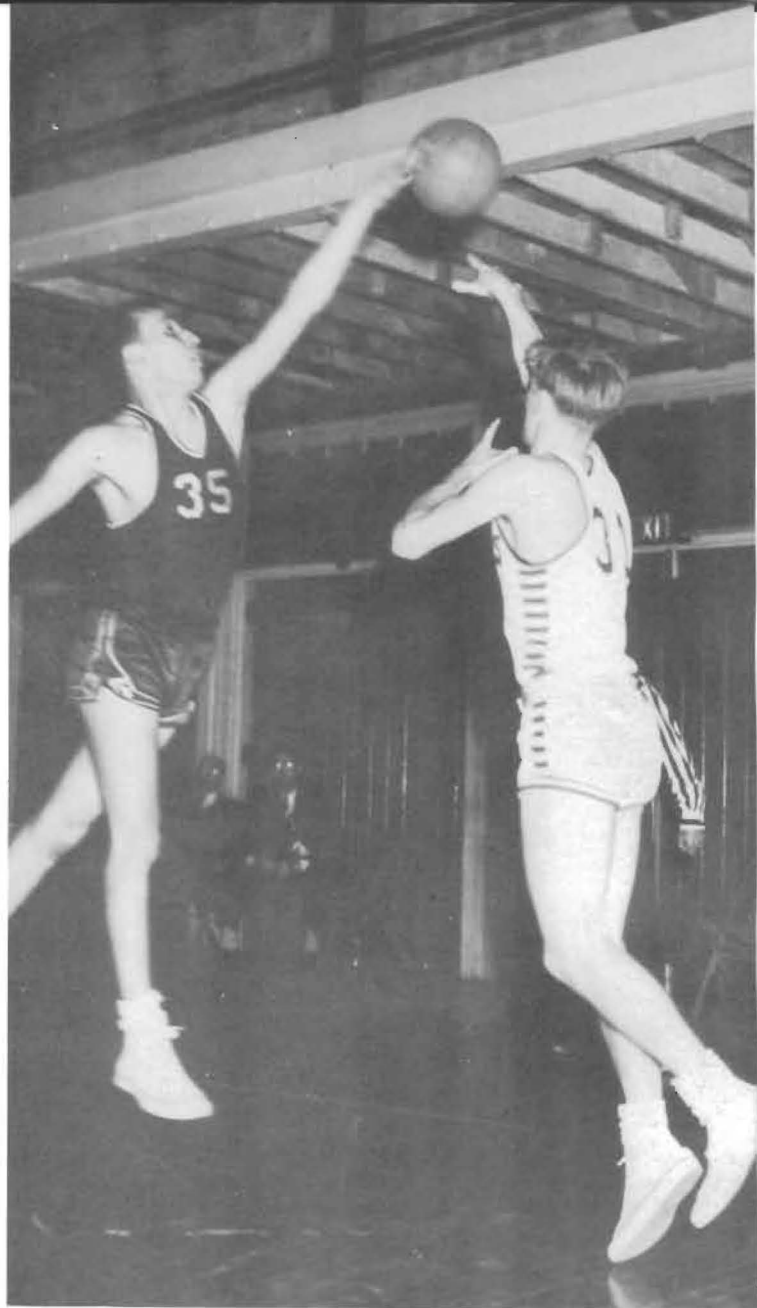
1952

S. C.	Opponents	
S. W. Oklahoma State		56 49
N. W. Oklahoma State		63 40
Kansas Wesleyan		59 54
Central Oklahoma State		58 55
N. W. Oklahoma State		46 52
Kansas Wesleyan		58 52
Central College, Mo.		46 74
Olathe N.A.S.		68 40
Washburn University		62 63
Pittsburg State		55 44
Emporia State		67 66
McPherson College		51 57
Pittsburg State		56 59
Wichita U.		63 91
Wichita U.		27 57
St. Benedict's		54 62
Ft. Hays		58 68
Washburn University		55 78
Central Okla. State		79 57
Ft. Hays State		57 67
St. Benedict's		55 65
Emporia State		56 62

SEASON'S RECORD

W. - 9
L. - 13

Frank Shoots



Before leaving for the Air Force, Craig opens remembrance from the team.



The Purple squad, coached by Harold S. Hunt, got off to a racing start winning eight of their first eleven games. But Uncle Sam interfered with the Builder plans by drafting the center, George Craig, at mid-season. When big George entered the Air Force, he had a 20.3 scoring average and ranked third in the NAIB statistics for field goal percentage.

Although they exhibited some fine basketball at times the team never seemed to recover from the loss of Craig and could muster but one win during the second half of the season.

Going into the last game of the season, Jim Farney had a 17.8 scoring average in conference games and was leading the conference in total points scored with 342.

The starting lineup at the close of the season was Farney, Bloxom, Kesler, Frank, and Poovey or Edens.

BUILDERS DEFEAT RANGERS, 63 TO 49, IN OPENING GAME

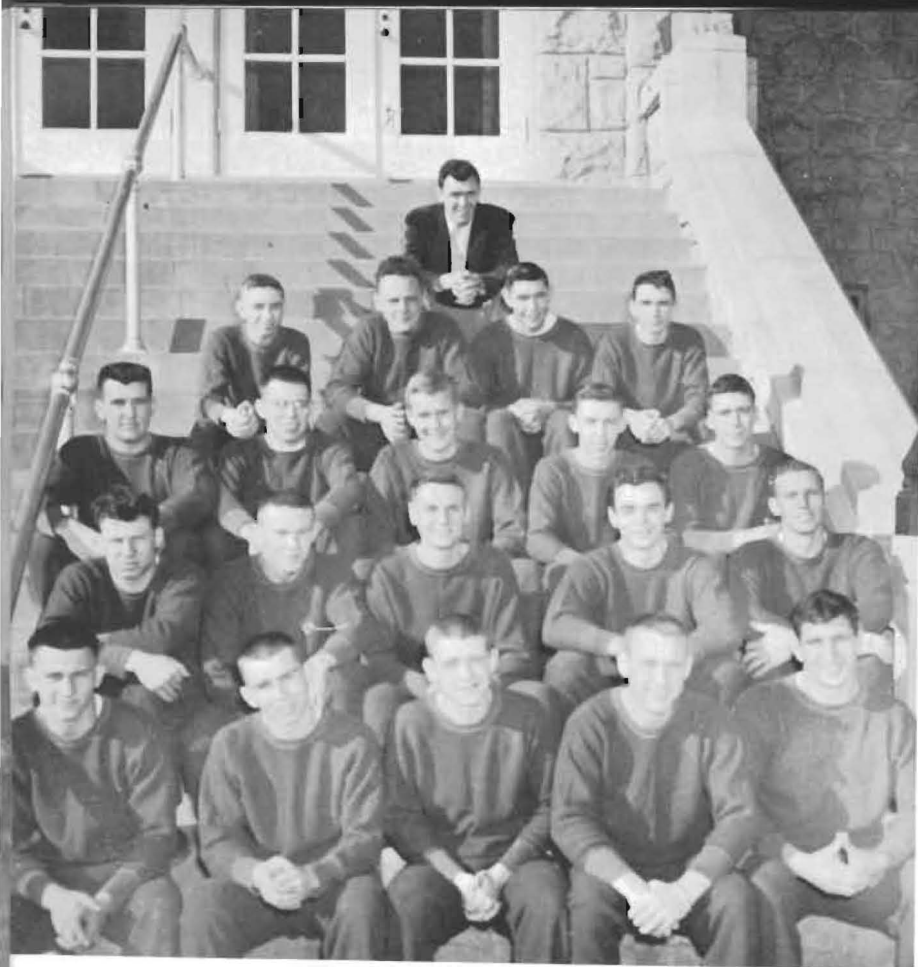




The lively "B" team played a hard, fast season winning ten of its twenty-two games. Team members pictured above are Newman, Knowles, Falen, Cooper, Witter, Townsend, and Henson.

Pictured below, a tense moment in the Builder-Bulldog game.





Track

Under the able guidance of Coach Carroll, the Builder's cinder-men are a strong squad. The track team is built from five of last year's lettermen and a group of promising thin clads. Track, which is a CIC sport, took the place of baseball at Southwestern this year.

1st ROW: Hudson, Detter, Kiser, Witter, Dvorak. 2nd ROW: Lamborn, Saville, Poovey, Puckett, Brown. 3rd ROW: Martin, Cooper, Carter, Palmer, Cullop. 4th ROW: E. Newman, Drennan, Pake, F. Newman. 5th ROW: Coach Carroll.

Hudson, Martin, and Detter work out with the javelin.



e of
er's
quad.
five
nd a
ads.
port,
l at



Wise and Hough stand Farney and Frank in a set of doubles.

Tennis

Tennis is always one of the popular sports at Southwestern. Last year the tennis team was second in the CIC. All of last year's team graduated and a '52 team was built from scratch.

Students spend many sunny afternoons on the courts across Warren Street from the Union.

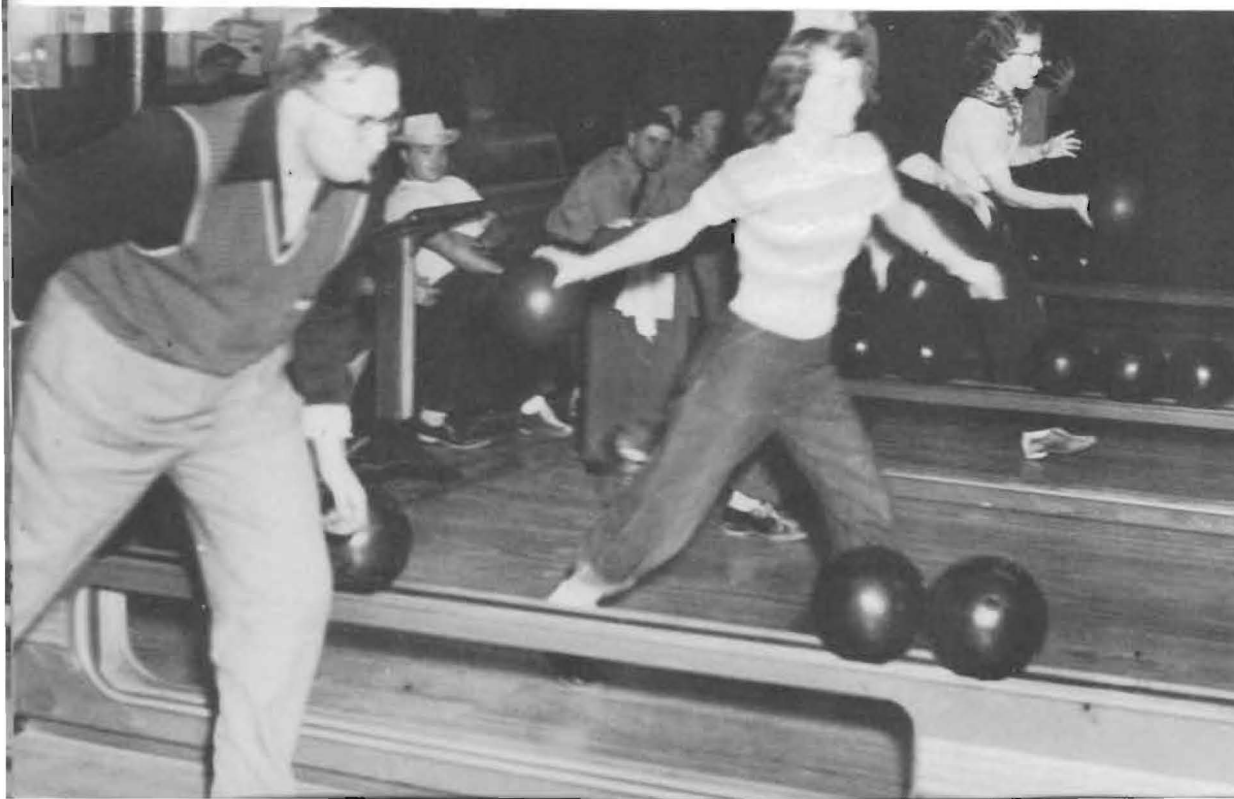




Intramural basketball is one of the most popular winter activities.

Intramurals

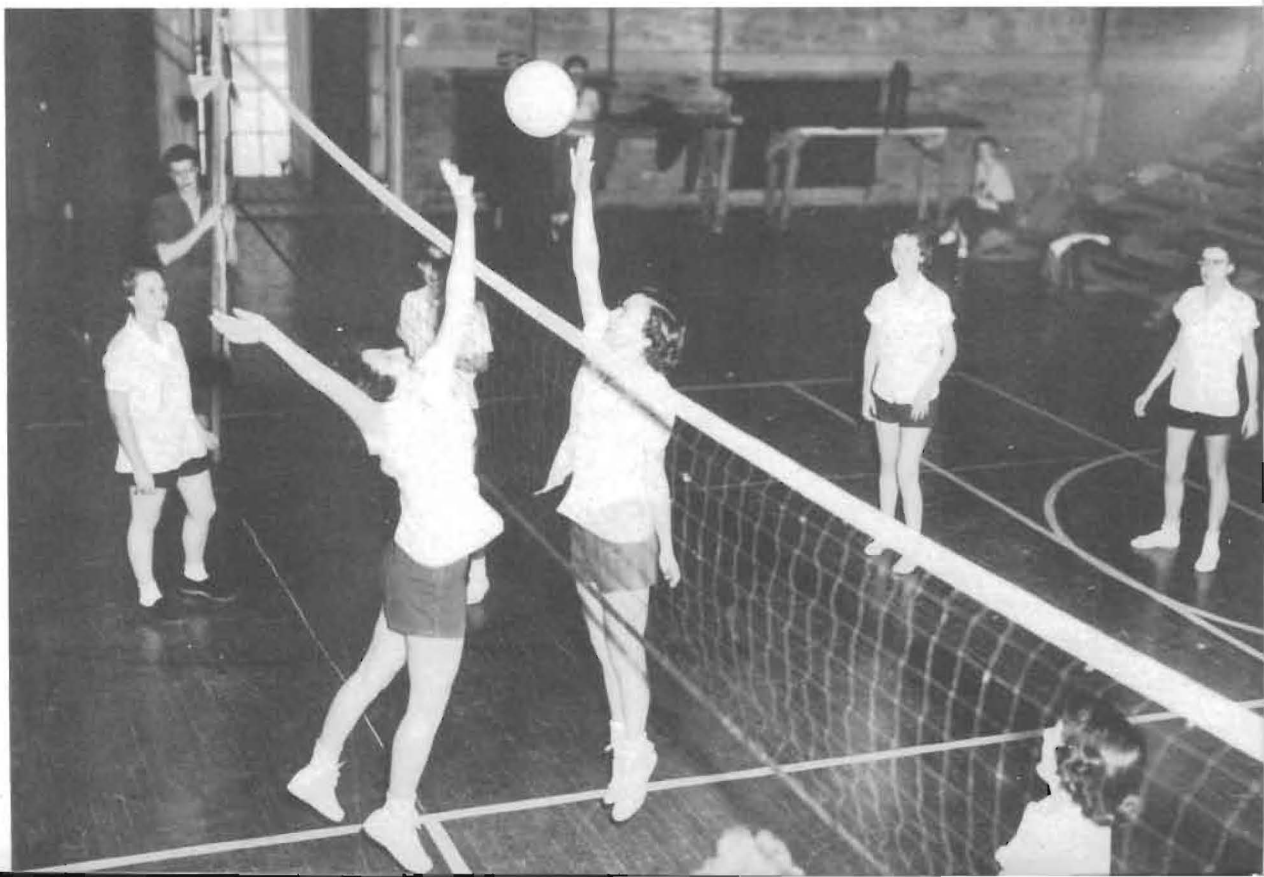
The bowling competition is always rough on Saturday afternoons.





A fast game of ping-pong is a continual feature of the Student Union.

The girls' volleyball competition is another of the intramural activities. This year the girls got plenty of practice before the W.A.A. intercollegiate volleyball tournament held at Southwestern.





At Southwestern every student interested has a chance to participate in sports events.



TH
pr
ga
Pi
Ja
Mu
Ho



BUILDING THE MOUND

Cheerleaders

The hard-working cheerleaders are present at all basketball and football games as well as other college events. Pictured below at practice session are Jo Williams, Jackie Doughty, Mildred Murphy, Fred Fry, Chet Osborn, and Harold Henderson.



HOMECOMING





1ST ROW: Hudson, Johnson, Rader, Orme, Coach Hunt, Farney.
2ND ROW: Kuhn, Jackson, Pake, Tiner, Martin, Gillaspie.

Pi Sigma Phi is an honorary athletic fraternity. It was organized with the object of promoting scholarship and sportsmanship. A purple "S" is given to those who have participated in a specified number of games or earned a specified number of points. Well known for its initiations, the organization makes new Pi Sigs feel that they have earned the honor of wearing the "S" by getting through the initiation. Pi Sigs exercised their right this year to choose the Homecoming queen and her attendants. They also held their annual banquet and dances.



1st ROW: Gale, Derby, Kanaga. 2nd ROW: Herrin, Forsyth, Hawes, Larkin, Holmes, Roderick, Bird. 3rd ROW: Barnett, Kerr, Drennan, Thurtell, Bigler. 4th ROW: Walker, Vandergriff, Friend, Miss Cloud, sponsor.

W. A. A.

The Women's Athletic Association is an organization to encourage athletic and other recreational games among college women. There are both individual and team sports for those who wish to participate. The objective of the organization is to promote sportsmanship, healthful living, and strong physical bodies as requisites to complete living.

Special projects were the sponsoring of the visit of the Red Cross Blood Bank, and the High School Play Day.

High light of the year was the inter-collegiate volleyball tournament with six college volleyball teams from the College of Emporia, Kansas State, Kansas Wesleyan, Wichita University, Friends University, and St. John's College.



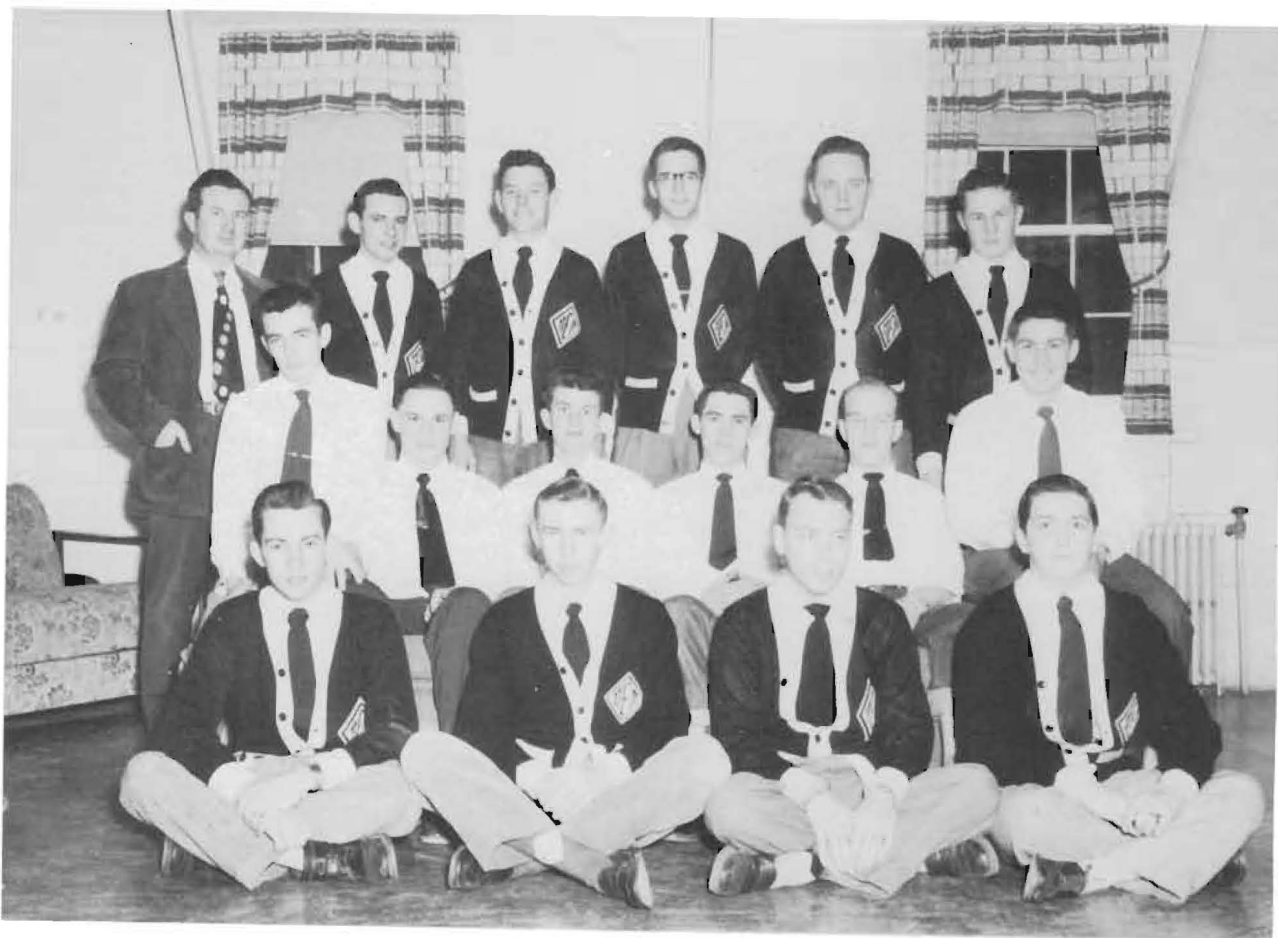
1st ROW: Detter, Hudson, Martin, Dvorak, Gray, Fry, Rader, Saville, Bishop. 2nd ROW: Reimer, Walker, Preston, Poovey, Bloxom, Kesler, Brown, Gillaspie, Witter, Edwards.

Kappa Rho

Kappa Rho is the only organization on campus now claiming to possess the original Jinx – even Kappa Rhos confess that it is battered and not too recognizable.

Rushees were given a formal dance after three days of “rough” initiation. The homecoming float was a tub with claw and ball feet containing Bob Everly.

Kappa Rhos, advised by Mr. Lloyd Edwards, presented an assembly, sponsored Jackie Doughty as Moundbuilder Queen, and participated in the Milkbucket game.



1st ROW: Gregory, Palmer, Hawkins, Phillips. 2nd ROW: Lundeen, Henry, Osborn, Townsend, Rethorst, Cheatham, Mr. Cloud, sponsor. Hendersan, Morgan, Yoder, Drennan, Standifard.

Pi Epsilon Pi

Pi Epsilon Pi, men's pep club, had as its first event of the year a Homecoming alumni chili supper. The Pi Ep's float in the Homecoming parade presented a novel idea of St. Benedict's queen and won third place. Rush Week activities were gym night with a wiener roast and a midnight supper for the rushees. Pledge Week and "Hell Night" followed.

Spring events were an assembly, the Milkbucket game, a spring banquet and formal, and the sponsoring of Jeanette Nelson for Moundbuilder Queen. Organized in November of 1941, the group is now sponsored by a charter member, Mr. Bill Cloud.



1st ROW: Hutchcroft, Haun, Bigler. 2nd ROW: McKaig, Edens, Redfield, Troyer, Weikel, Banks, Craine, Adams, Priest, Schwatken, Nelson, Deem, Branson, Mayo. 3rd ROW: Gillig, Beggs, Hartnett, Hsueh, Carol Kanaga, Herrin, Langhofer, Charleen Kanaga, Livingston, Gale, Derby, Lovell, Murphy, Ploughe, Gentzler, Forsyth, Somerville.

Jinx Jane

Sweaters and skirts, the traditional garb of any college girl, are now being worn by the Jinx Jane pep club. The Jinx Janes have completed another active year which started off with the usual rush week activities — a slumber party, skating, and a dance.

Activities this year also included entertaining former Jinx Janes at a Homecoming breakfast, sponsoring several dances, picnics and an assembly program as well as giving yells before the assemblies. The Jinx Janes sponsored Susan Hsueh as their candidate for Moundbuilder Queen. Late spring activities included the annual Cream Can Game with the K. K. pep club and the annual spring banquet.



1st ROW: Doughty, Friend, G. Walker, Fox, B. Walker, Powers, Kerr, Snyder, Bird, Boyd, Roderick, Brace; 2nd ROW: Combs, Huffman, Shields, Drennan, Nicholson, Miss Cloud, sponsor, Vandergriff, Olmstead, Gagnebin, Stephenson, Ecker, Patterson.

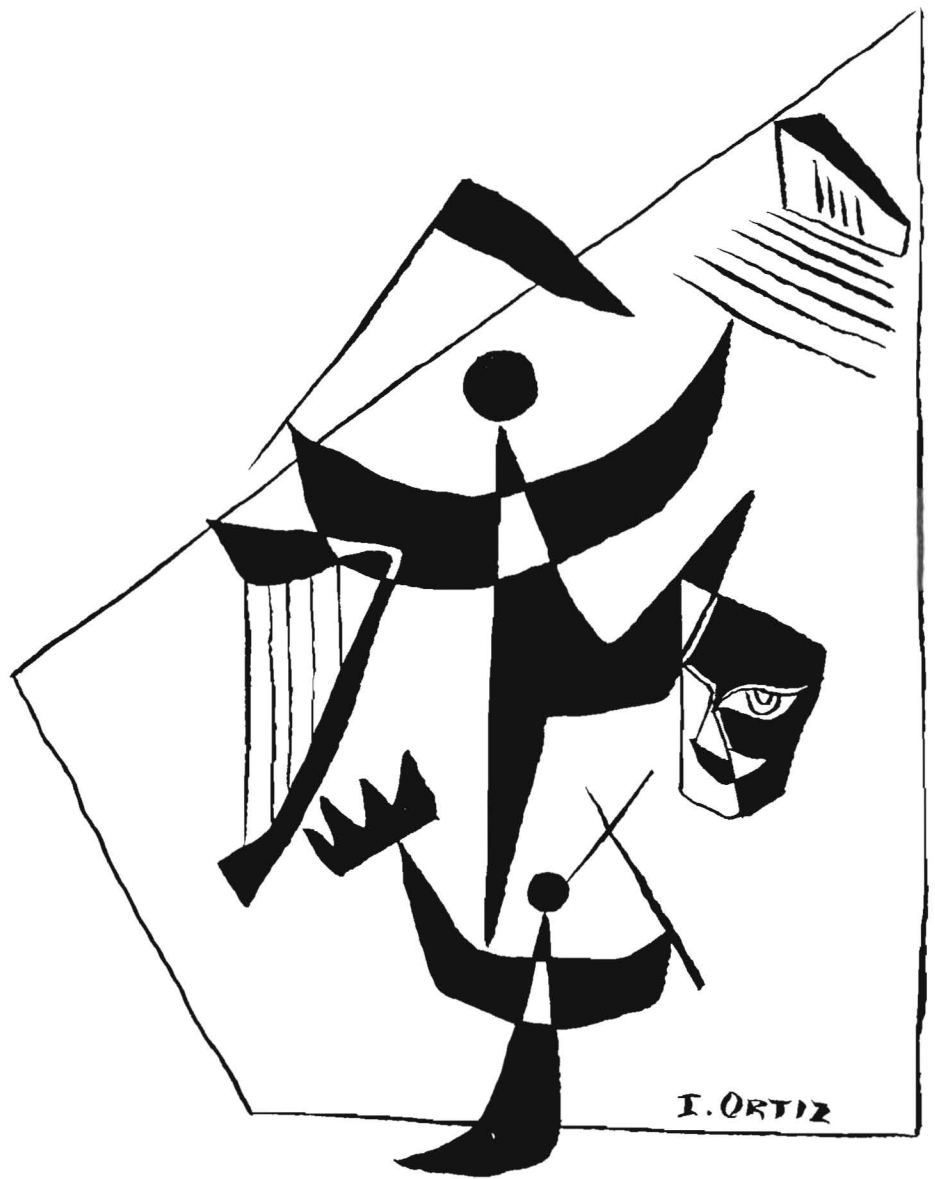
K. K.

The K. K. Pep Club is an organization that promotes interest and enthusiasm in all school activities as well as providing opportunity for social development among its members.

The black and white suits of the K. K.'s are just as much a part of Southwestern as the four pillars of Richardson Hall. Alumni returning to the campus can easily recognize the K. K.'s as their uniforms have not changed since their origin in 1928.

Other traditions that K. K.'s have kept during the years include their rush activities beginning with a slumber party, continuing with a progressive dinner, and concluding with a formal dance.

The many activities of the organization for the year have included decorating a float for the Homecoming parade, giving a dinner for K. K. alumni at Homecoming, sponsoring Betty Walker as Moundbuilder Queen, promoting numerous dances, staging an assembly program, and holding an annual picnic and paddle dance.



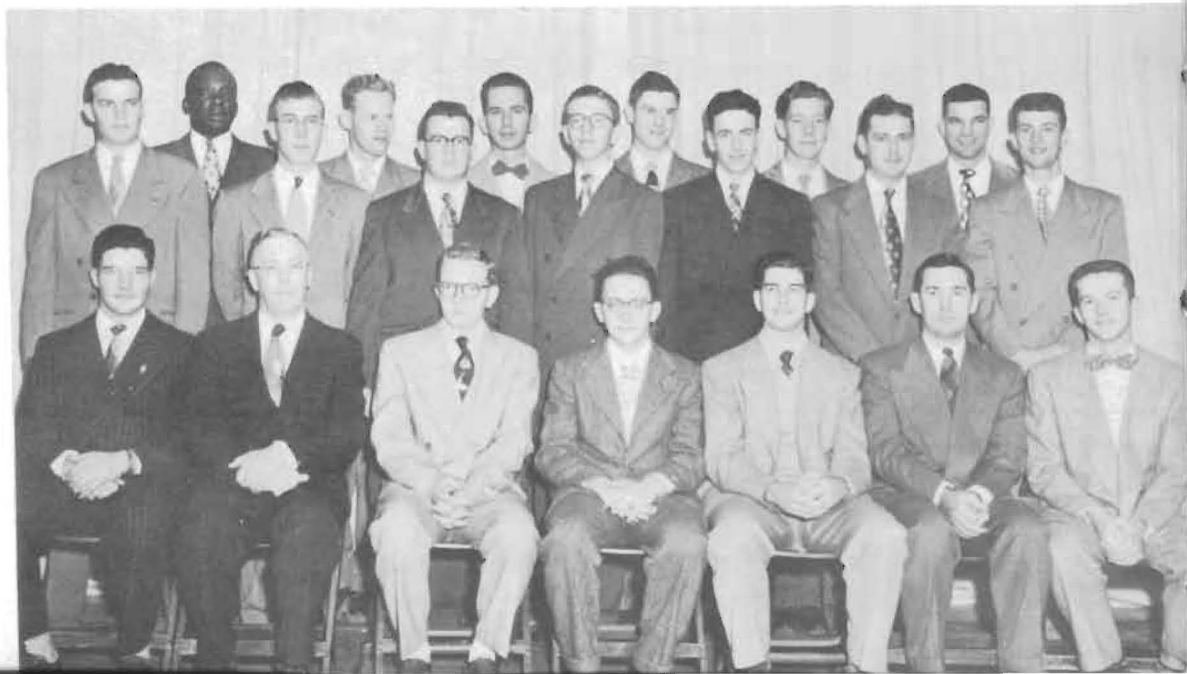
Organizations and Activities



Dean Monypeny, Mr. M. Snyder, Dr. Hoag, Knowlton, Ramsay, Mr. Poundstone, Miss Cloud, Miss Evers, Harvey, Mr. Dunlap. Members not picutred are E. Snyder and R. McFall.

PI GAMMA MU, a national social science fraternity, was founded by Dr. Leroy Allen in 1926. Southwestern's charter chapter celebrates its silver anniversary this year.

PRE-MINISTERIAL, 1st ROW: Ramsay, Pres. Murray, Clare, Wise, Harms, Mr. Dunlap, Harvey. 2nd ROW: Irwin, Beye, Garralda, Matthews, Mason, Kelly, Osborn. 3rd ROW: Barron, King, McGuire, James, Sizelove, Young.





Cosmopolitan Club members, half foreign students, enjoy a variety of social activities. Pictured above are Valencia, Foo, Hsueh, Gotchall.

2nd Row: Chung, Ricord, Rose, Almack, Cook, Gugler.

3rd Row: Ortiz, Balloch, Stephenson, Haun, Young, R. Chaffin, Green, Afshar, Biberstein, Mr. G. Chaffin, Sherkat, Davis, Migia.

English Club as a major project presented scenes from Shakespeare. Pictured below are Dr. Simpson, Larkin, Nelson, Beye, Rhine, Jones, Bettis, Carr, Hutton, Drennan, McCaleb, and Dr. Hoag as they read *Cyrano de Bergerac*.





Pictured above are Miss Graham, Tretbar, Kirkhart, Halbower, Kiser, Osborn, Tiner, Cheatham, Carr, and Vandergriff at dress rehearsal for "Bill of Divorcement."

Campus Players

Under the expert guidance of Miss Helen Graham the Campus Players last fall produced "Bill of Divorcement." "Eagerheart" was presented at Christmas time as is traditional. Luther Kiser was first semester president.

In the scene from "Eagerheart" are Phillips, Cheatham, Henderson, Tiner, Hankins, Becker, Mason, Tretbar, Kiser. Falen.





Alpha Mu The honorary music fraternity, was founded at Southwestern College in 1942. Pictured above are 1st Row: Baker, Klitzke, Haneke, Phillips, Biberstein, Gregory. 2nd Row: Priest, Johnson, Rittel, Goodwin, Beeman, Langhofer, Troyer, Davis, Grier, Lovell, Boyd. 3rd Row: E. Ploughe, Rathnam, Schwatken, Cook, Mitchell, Henry, Hseuh, Clark, Chaffin, Banks, Sellers, Branson, McNeil.

Opera Workshop produced early in the year its first operetta of the season, "I Smell Smoke." Pictured below are Baker, Johnson, Sizelove, Biberstein, McNeil, Gregory, Boyd, Troyer, Satterthwaite, and Langhofer appearing in that production.





Band

The Band under the direction of Mr. Earl Dungan toured 19 Kansas towns this year. Miss Lucille Haney was chosen as guest artist and faculty sponsor for the trip.

FLUTE

Pat Herrin
Jackie Doughty

CLARINET

Shirley Bailey
Lois Holmes
Joan Redfield
Vaughn Reed
Leona Ricord
Patsy Rittel
Barbara Crilly
Carla Curtis
Jim Matthews

OBOE

Benette Banks

SAXOPHONE

Darlene Branson
Don Haneke
Joline Schwatken
Patricia Somerville
Charles Yoder

PERCUSSION

Joann Haun
John Henson
Pat Murray
Tony O'Brate
William Preston
Dale Mason

BASSOON

Chester Osborn
John Garralda

CORNET

Richard Deatrick
Paula Forsyth
Barbara Goodwin
Karol Gregory
Pat Troyer
Miles Henry
Eugene Yoder
Dishman Clark

TROMBONE

Val Cheatham
Don Halbower
Duane Harms
Charles Muse
Janice Shuler
Marjorie Essex

BARITONE

Dorothy Braddock
Fred Kemp

TUBA

Leona Beeman
Ladde Klitzke
Winchell Chung

FRENCH HORN

Barbara Willan
Wanda Ecker



The College Symphony Orchestra

is a member of the American Symphony Orchestra League and is a real cultural force in the community. Its membership is not limited to music majors alone but is made up of all college students who are qualified from the standpoint of performance. From the large group, the Little Symphony is chosen to serve as a traveling group making an annual tour. During December, the Little Symphony made a 1000-mile Goodwill Tour of 16 churches and high schools in Kansas. Miss Lois McNeal, senior violinist, was the soloist and Prof. Ross O. Williams was the director.

FIRST VIOLIN

Lois McNeil
Earl Dungan
Janet Bigler
Vela Mae Langhofer
James Rathnam

SECOND VIOLIN

Pat Murray
Virginia Mitchell
Rey Valencia
Darlene Branson
Susan Hsueh

VIOLA

Jo Ann Johnson
Dorothea Drennan
Louis Hayward

STRING BASS

Pat Adams
Carolyn Lovell
Wayne Baker

CELLO

Shirley Bailey
Verdeen Craine
Kathleen Shields
Joan Cook
Sylvia Cook

FLUTE

Wilma Larkin
Jackie Doughty

OBOE

Benette Banks
Charles Yoder

CLARINET

James Matthews
Lois Holmes

BASSOON

Chet Osborn
John Garralda

FRENCH HORN

Barbara Willan
Wanda Ecker
Don Drennan

TRUMPET

Karol Gregory
Richard Deatrack

TROMBONE

Duane Harms
Charles Muse
Marjorie Essex

TYMPANI

Joann Haun

DIRECTOR

Ross O. Williams



A Cappella Choir

Dr. Orcenith Smith directs the 70-voice A Cappella Choir which toured during Easter vacation. The Choir is this year celebrating its 25th anniversary. Vela Mae Langhofer was president this year; Nancy Livingston was accompanist.

SOPRANO

Rey Valencia
Jo Ann Johnson
Colleen Tarrant
Elizabeth Ploughe
Joline Schwatken
Jo Williams
Joyce Friend
Pat Troyer
Alice Boyd
Bonnie Johnson
Jennis Phillips
Leona Beeman
Betty Priest
Darlene Almack
Velma Grier
Virginia Mitchell
Mary Esther Edens
Kathleen Shields
Benette Banks

ALTO

Marilyn Carr
Jo Ann Huffman
Pat Murray

ALTO (Cont.)

Marjorie Gillig
Sylvia Cook
Alice McFall
Wanda Kirkhart
Caroline Becker
Darlene Branson
Charleen Kanaga
Mary Thurtell
Mildred Murphy
Vela Mae Langhofer
Lois McNeil
Glenna Davis
Mildred Messer
Janice Shuler
Dorothea Drennan
Marilyn Powers
Shirley Bailey

TENOR

Lloyd Satterthwaite
Val Cheatham
Bill Bettis
David Phillips
Marlin Bailey

TENOR (Cont.)

Jim Rathnam
Glenn Biberstein
Karol Gregory
Dick Wells
Marvin Cranston
Melvin Cheatham

BASS

Harold Henderson
Charles Yoder
Wayne Baker
Dean Ramsay
Sheldon McGuire
Galen Palmer
Duane Harms
Ladde Klitzke
Dishman Clark
Chester Osborn
Don Haneke
Merlin Sizelove
Miles Henry
James Matthews
Don Halbower
Bill Bunyan
Dale Mason



Kappi Pi is an honorary national art fraternity composed of art majors and minors who have "B" average or above. During the year they sponsored numerous art exhibits at the Student Union as well as neighboring cities. Their large replica of the Jinx won first prize among the floats of the Homecoming parade. They also sponsored the Beaux Arts ball in the spring. The fraternity has been six years on the campus and the sponsor, Mrs. Sue Jean Covacevich, has several of her paintings in the traveling exhibit. Pictured above are: Ortiz, Ames, Hankins, Branson, Mrs. Covacevich, Toledo, Parker, Calnon, Hudson, and Smith.

Pi Sigma Gamma is better known on the campus as the Science Club. Members meet regularly and study many phases of science. Dr. Leroy Spitze, Professor Bill Cloud, and Dr. Bernard Reidel were the sponsors. Pictured below are: 1st ROW: Chung, Afshar, Gerike. 2nd ROW: Sherkat, Glass, Lundeen, Bunyan. 3rd ROW: Dr. Spitze, Mr. Cloud, Dr. Reidel.





Southwestern Debaters pictured above, are Hutchcroft, Bunker, Griffith, Cheatham, Matthews, Rhine, Huffman, Eason, together with their coach, Mr. Jack Howe. The championship debaters were winners of their division, East Central tournament, Ada; undefeated at University of Nebraska; quarter finalists, Baylor University. They also made outstanding records at eight other tournaments in debate and individual events. The champions competed in a record 93 debates during the year.

Pi Kappa Delta members, pictured below, are Mr. Howe, Cheatham, E. Snyder, Rhine, Mr. Snyder, Bunker, Dr. Hoag, Hutchcroft, Kirkhart, Eason, Huffman, Mr. Dunlap, Matthews, Griffith, Miss Sorber, and President Murray. Not pictured was George Craig. The Kansas Delta chapter of the honorary speech fraternity sponsored two major debate tournaments and promoted forensics on the campus during the year.





Pictured above are Scarrow, Stayton, Walker, Murray, Williams, Thurtell, Becker, Chism, Fox, Shuler, Almack, Ploughe, Livingston, Klitzke, Bigler, Lundeen, Mason, Beye, Cooper, McGuire, Witter, Bloxom, Falen, Kiser, Poovey, Kirk, Stinson, Saville, Toledo, Osborn, Muse, Gole, Biberstein.



Sigma Delphi

Sigma-Delphi, one of the two literary societies at Southwestern, held an exciting rush week at the first of the year. Pledges learned the Alma Mater and the Sigma-Delphi song. A play night was co-sponsored with Belle-Athens. Informal initiation consisted of a picnic and a Kangaroo Court. Formal initiation was held at the Sigma-Delphi ball.

"Mother" Halbower feeds milk to "baby" Osborn during Kangaroo Court.



SITTING: Becker, Kinnamon, Puckett, Bettis, Tretbar, Toledo, Garralda, Curtis, Beeman, Shields, L. Crilly, Barnett, McQuirk. STANDING: Sizelove, Haun, Stephenson, B. Crilly, Cook, Gillig, Braddock, Combs, Ecker.

Belle - Athenians

Belle-Athens was founded in 1890. Rush week activities began another active school year. The Athenians sponsored a float for the Homecoming parade and an assembly program. The organization, together with the Photo Flops, sponsored the winning candidate for Moundbuilder Queen. In March the group presented "Lady Windermere's Fan", written by Oscar Wilde, as their special project.



Deatrick and Stephenson serve the sentence of Kangaroo Court.

SOUTHWESTERN ON THE AIR with Kiser, Klitzke, Kirkhart, Biberstein, Tiner, and Bunker filling the air waves.



Radio is one of the more important forms of public relations emphasized at Southwestern. Faculty and students put Southwestern on the air four times weekly presenting music, news, and educational programs. Under the capable direction of Miss Helen Graham, the Radio Workshop gives students practice in writing, producing, and presenting broadcasts over KSOK from the well-equipped studio pictured above.

Photo Flops major project for the year was the building and equipping of a new dark-room in Mossman Hall. Regular meetings were held to study the techniques of taking good pictures. Highlight of the programs was the showing by President Murray of the pictures taken of his European trip. The Photo-Flops also co-sponsored with Belle-Athens the winning candidate for Moundbuilder Queen, Joann Haun. Sponsor of the group was David E. Mackie.



PHOTO FLOPS, are Trotbar, Eason, Lundeen, Rhine, Ramsey, Haun, Puckett, Chung, James.

1st RO
McNeil,
ROW:
Klitzke,



Livingston, Boyd, Troyer,
Banks, Huffman, Messer,
Lovell.

GIRLS' SEXTETTE



FRESHMEN STRING QUARTETTE

Plaughe, Murray, Bigler, Shields, Drennan

Tretbar,
Rhine,
Lockett,

1st ROW: Boyd, Troyer,
McNeil, Langhofer. 2nd
ROW: Biberstein, Gregory,
Klitzke, Baker.



CHAPEL CHOIR



Moundbuilder

Early in the school year the Moundbuilder staff made an educational and unforgettable weekend trip to Oklahoma City to visit the yearbook publishing company. This year's staff has learned "the hard way" while working for a high rating from the Associated Collegiate Press.

They overcame the difficulties of inexperience, the confusion of moving the office twice and the darkroom once, and the problem of balancing the budget. Now the final goal, publication, has been achieved. The faculty sponsor was Mr. David Mackie.

Staff members above are Robley Rhine, assistant editor; Charlene McCaleb, editor; Wanda Ecker, business manager; Carolyn Combs, organizations editor; Harold Tretbar, photographer; Isaac Ortiz, art editor.

Collegian

In this record year of building and reconstruction on the Southwestern campus, the Southwestern Collegian has worked diligently to record promptly the events of another college year.

With the college record of being 13 times All-American and Pacemaker, the staff has had as its goal to merit the "First Honor" rating awarded to last year's staff by the Associate Collegiate Press.

Jeanette Nelson, assisted by Howard Phillips as production editor and Carolyn Lovell as business manager, launched the first issues.

Carolyn Combs took over as editor at mid-year with Robley Rhine as assistant and Freddy Fry as business manager. Myron Cooper became advertising manager with Herb Reimer as sports editor. Society editor was Jo Ann Huffman and Isaac Ortiz continued as art editor. Harold Tretbar, Myron Cooper, and Winchell Chung furnished the pictures.

Opportunities for students to explore and receive training in news writing, editing, advertising, public relations, photography, and the many fields of journalism as well as provide incentive for creative writing are the goals of the Journalism Workshop. As the year draws to a close, the Collegian writes "30" to a profitable year of reporting the progress of a great college.

Pictured below are members of the first and second semester staffs of the "Southwestern Collegian" preparing the next issue. Left to right, they are Wanda Ecker, Jeannette Nelson, Fred Fry, Izolde Rose, Mr. Mackie, sponsor, Ladde Klitzke, Ned Kimbrell, Gene Yoder, Robley Rhine, Jo Ann Huffman, Betty Gotchall, Carolyn Combs, Isaac Ortiz, and Virgil Hutton.





Gamma Omicron is open to all students having completed at least six hours of home economics courses. Members above are: 2nd ROW: Weikal, Miss Evers, Stayton, Bigler, Derby, Brace, Patterson, Hardy, Balloch, Chism, Olmstead, Mayo, Becker, Mrs. Skinner, Walker, Craine. 1st ROW: Somerville, Reed, Bunker, Larkin, Doughty, Haun, Stephenson, Woodworth, B. Crilly, L. Crilly.

Kappa Omicron Phi is the professional home economics fraternity. Their theme was service, and some of their activities were helping with the Kiwanis pancake fry, and serving Faculty Dames. Members pictured are: Mrs. Skinner, Gentzler, Reed, Stayton, Miss Evers, Walker, Brace, Bunker, Hardy, Somerville, Becker Craine, Balloch.





Emma Wilson Guild is an organization of the Women's Society of Christian Service with Mrs. W. J. Poundstone as sponsor. Guild projects involve both home and foreign missions. Members above are: 1st ROW: Migia, Barnett, L. Crilly, V. Becker, Thurtell, Cook, Branson, Goodwin, Grier, Rose, Larkin, Gotchall, C. Becker, McNeil. 2nd ROW: Ecker, Valencia, Gugler, Hardy, Johnson, P. Murray, Hartnett. 3rd ROW: Walker, Schuler, Schwatken, B. Crilly, McFall, Ricord, Herrin, Hawes, Beggs, Hsueh, Woodworth, Green, McIntosh.

The Student Christian Association strives, irrespective of creed, to form a common loyalty to Christ through worship, study, and action. Their programs varied from radio broadcasts to tours, parties, and "talking things over" at their weekly meetings. A watermelon feed was held in the fall, and Christmas caroling was a project during Christmas time. Cabinet members, pictured below are: Ploughe, Becker, McFall, Bailey, Stayton, Miller, Dr. Hoag, Mr. Dunlap, Mayo, Ramsay, Mason, Harms, McGuire.





Sociology Club provides a better understanding of human relationships and improves scholarship in the field of sociology. During the year the club made a field trip to Wichita to visit the police station and logopedics hospital. In co-operation with other organizations, it sponsored an educational project for Spanish-speaking people of Winfield. Members pictured are: 1st ROW: Gotchall, Becker, McIntosh, Green, Miss Luella Scarrow. 2nd ROW: Beye, Mr. Snyder, Kuhn.

The Methodist Student Movement is an organization designed to promote Christian fellowship among the students on the campus. It meets each Sunday evening at the Grace Methodist church for study of religious subjects. Social times are also enjoyed such as the Freshman Ghost Walk held at the beginning of the year. A high point of the year was Religious Emphasis week when Dr. James S. Chubb was on the campus. Cabinet members pictured below are: McKaig, Biberstein, Stayton, Walker, Hutchcroft, Gotchall, Troyer, Herrin, Haneke, Green and Forsyth.





1st ROW: Hawkins, Hutton, Snyder, Young; 2nd ROW: Gregory, McGuire, Drennan; 3rd ROW: Craine, Murphy, Hudson, Walker, Nelson, Lundeen; 4th ROW: Livingston, Clark, Doughty, Gale; 5th ROW: McKaig, Mayo, McNeil; 6th ROW: Mr. Cloud, Mrs. Skinner.

President
MICKEY HAWKINS



Student Council

makes possible self-government for the student body. Mickey Hawkins presided at student council meetings every Thursday night at seven when council members met to discuss current problems at Southwestern. He also presided at assemblies and helped with student problems.

Verdeen Crane served the student body as an efficient vice-president. Her main duty was to plan the assembly programs, but she assisted the president in many ways.



Hawkins
Becker
Murphy
McNeil
Young



(Sitting)
Murphy
McNeil
Becker
Hawkins
(Standing)
Young
Tretbar

Who's Who Southwestern is represented in Who's Who Among Students in American Universities and Colleges this year by Michael Hawkins, Velma Becker, Mildred Murphy, Lois McNeil, and Donald Young.

A joint committee with representatives from the administration committee and student council chose the students elected to Who's Who this year. Their selection was based upon scholarship, leadership, participation in extra-curricular activities, character, and potentialities for future usefulness and success.

Masterbuilders are chosen from the senior class by popular vote of the student body. Loyalty and service are the basis on which Masterbuilders are to be elected.

Selected for the honor this year were Mildred Murphy, Lois McNeil, Velma Becker, Michael Hawkins, Donald Young, and Harold Tretbar.



1st ROW: Dean Monypeny, McCaleb, Bigler, Prof. Poundstone, Carr, Johnson, Parker, Rose, Troyer, Calnon, Warren, Branson. 2nd ROW: Hayward, Becker, McGuire, Mayo, McQuirk, Hardy, Gillaspie, Kanaga, Miss Clute, Fox, Barnett, Rittel, Gotchall, Toledo, Dr. Nolan.

F. T. A.

Southwestern's Francis Leonard Bacon Chapter of Future Teachers of America received its charter March 24, 1952. Future Teachers was founded in 1939 with the purpose of promoting a professional outlook in its members.

The most interesting project of the year was a panel discussion of teachers' problems. The problems discussed were submitted by teachers who have graduated from Southwestern within the last three years.

Order of the Mound

In May, 1951, the faculty elected the following to the Order of the Mound: Don Adams, Ward Akers, Phyllis Bailey, Eugene Carter, Alvin Cassingham, Verlin Hoberecht, Betty McGowan, Mary Rethorst, Ravera Rolf, Esther Sheldon, Nola Tang, John Thomas, Kenneth Thomas, and Janet Yoder.

During the commencement season the purple ribbon signifying this honor was worn over the students' academic gowns. In order to qualify for election a student must maintain a grade point average of "B" over four years of work, be in the upper ten or twelve percent of the class, and spend two of the four college years at Southwestern.

Builder Events of 1951-1952



Dean Monypeny welcomes Pres. and Mrs. Murray home from Europe in Sept.



Belle-Athenian initiates kiss the Jinx at the end of rush week.



The four candidates for Homecoming Queen line up for a publicity shot.



Mr. Dungan dressed for his part in the "nearsighted bandmaster" stunt.



Senior Day



Mr. Howe pre- collegiate De winners from



Senior Day visitors lined up for refreshments.



Winfield High School students, sponsored by Mr. Snyder, won the High School Debate Tournament at Southwestern.



Mr. Howe presented the award of the 22nd Intercollegiate Debate Tournament of Southwestern to winners from Southwest Missouri State College.



Dr. and Mrs. Murray welcomed Dean Ramsay's parents on Parents' Day.



George Craig, Builder center, poses for a photo.



Students helped move books from the old library to the new Memorial Library during a memorable holiday.



Connie Kerr reigned at the Homecoming Game.



al Library



The Mound, which stands as a visible bond between all of the students and faculty, is the source of the Southwesterner's title of Moundbuilder.



Senior Day guests register in the Student Union.

Pearl Buck, famous novelist, spoke to the students of Southwestern College and the people of Winfield.



King Spice of 1952

HOME EC'S SUGAR AND SPICE

One of the new events on campus this year was the election of King Spice and his attendants by the home economics group, Gamma Omicron.

All junior and senior boys are eligible for the honor. Candidates are judged by their proper grooming, personality, participation in activities, and their interest in the promotion of home economics on the campus.

The first voting took place in March when five boys, Neil Frank, Don Young, Royce Orme, Sheldon McGuire, and Mickey Hawkins, were selected as candidates. Final voting for the "royal gentleman" occurred in April preceding the all school dance in his honor. Girls voting for the

Candidates lounging at Smith Hall are Frank, Orme, and McGuire. Others not pictured are Young and Hawkins.



king had to meet certain club requirements before being eligible to cast a ballot.

At the dance the honor was bestowed upon the candidate receiving the most votes. The title was disclosed and the king was crowned by the president of Gamma Omicron, Velma Becker. After his coronation King Spice of 1952 reigned over the program given in his honor and the remainder of the dance.

It is hoped that this new idea will grow and become one of Southwestern's treasured traditions.

Ma

May Queen



VELMA BECKER



DON YOUNG

Master of Ceremonies



WANDA DERBY

cl
b
w
b
t
f
M

Attendants



PHYLLIS HARTNETT

Once a year the two men's pep clubs, Pi Ep and Kappa Rho, play a basketball game to determine the winner of a traveling trophy, a milk bucket. The clubs also name a queen to reign at the game and the dance following. Winner of this year's Milkbucket game was Kappa Rho.



CAROL KANAGA



CONNIE KERR



Attendants

PHYLLIS HARTNETT

VIRGINIA BRACE

WANDA KIRKHART



JOANN HAUN



Attendants

SUSAN HSUEH

JACKIE DOUGHTY

JEANETTE NELSON



Attendants

BETTY WALKER

JOLINE SCHWATKEN

ISOLDE ROSE

ACa
Alph
Band
Bask
Belle
Cam
Chap
Chee
Colle
Cosm
Deba
Emm
Engli
Footb
Futur
Gamm
Girls
Intra
Jinx
K. K.
Kapp
Kapp
Kapp

CONTENTS

ACappella Choir	72, 73	Masterbuilders	87
Alpha Mu	69	Methodist Student Movement	84
Band	70	Moundbuilder	80
Basketball	48, 49, 50, 51	Opera Workshop	69
Belles-Athens	77	Orchestra	71
Campus Players	68	Order of the Mound	86
Chapel Choir	79	Photo Flops	78
Cheerleaders	57	Pi Epsilon Pi	61
Collegian	81	Pi Gamma Mu	66
Cosmopolitan Club	67	Pi Kappa Delta	75
Debate	75	Pi Sigma Gamma	74
Emma Wilson Guild	83	Pi Sigma Phi	58
English Club	67	Pre-Ministerial Students	66
Football	46, 47	Radio	78
Future Teachers	86	Sigma-Delphi	76
Gamma Omicron	82	Sociology Club	84
Girls Sextette	79	String Quartette	79
Intramurals	54, 55	Student Christian Association	83
Jinx Jane	62	Student Council	85
K. K.	63	Tennis	53
Kappa Omicron Phi	82	Track	52
Kappa Pi	74	Who's Who	87
Kappa Rho	60	Women's Athletic Association	59

PERSONAL INDEX

— A —

Adams, Harold 33, 54
 Adams, Patricia Grundy 27, 62
 Afshar, Aziz 27, 55, 67, 74
 Almock, Arletha Faye 37, 72, 76
 Almack, Darline 37, 39, 67, 72, 76
 Ames, Jack 37, 74

— B —

Bailey, Marlin 41, 72
 Bailey, Shirley 33, 35, 70, 71, 72, 83
 Baker, Wayne 11, 27, 69, 72, 79
 Balloch, Eunice 67, 82
 Banks, Benette 37, 62, 69, 70, 71, 79
 Barnett, Doris 37, 59, 77, 83, 87
 Barron, U. W. 41, 66
 Beason, Gerald 46
 Becker, Caroline 37, 72, 77, 83, 84, 88
 Becker, Velma 27, 35, 54, 68, 76, 82, 83, 86, 87, 93
 Beeman, Leona 31, 41, 69, 70, 72, 77, 88
 Beggs, Ruth 33, 62, 83
 Bettis, William 33, 67, 72, 77
 Beye, Eugene 37, 66, 67, 76, 84
 Biberstein, Glenn .. 16, 33, 39, 67, 69, 72, 76, 78, 79, 84
 Bigler, Janet 41, 55, 59, 62, 71, 76, 79, 82, 87
 Bird, Nanon 41, 59, 63
 Bishop, Robert 46, 60
 Bloxom, William 48, 50, 51, 60, 76
 Book, Paul 26, 27
 Boyd, Alice 27, 63, 69, 72, 79
 Brace, Virginia 33, 35, 63, 82, 88, 97
 Braddack, Dorothy 70, 77
 Branson, Darlene 33, 37, 62, 69, 71, 72, 83
 Branson, Mary Alice 70, 74, 87
 Brinkmeyer, Dean 27, 54
 Brinkmeyer, W. F. 23
 Brothers, Ruth 41
 Brown, Stanley 41, 52, 56, 60
 Bunker, Phyllis 32, 33, 35, 75, 78, 82
 Bunyan, Bill 37, 72, 74
 Burdette, Doris 27
 Burdette, E. Marie 22

— C —

Cales, Elmer 33
 Calnon, Kathleen 74, 87
 Carr, Marilyn Daly 14, 27, 67, 68, 72, 87
 Carroll, William 11, 19, 46, 47, 52
 Carter, Larry 35, 52
 Casburn, Mrs. Mabel 23
 Chaffin, Gladwin 21, 67, 69
 Chaffin, Mrs. Rita 67
 Cheatham, Melvin 41, 54, 72, 75
 Cheatham, Val 41, 61, 68, 70, 72,
 Chism, Alma 39, 41, 76, 82
 Choote, Arthur 33
 Chung, Winchell 37, 46, 67, 70, 74, 78
 Circle, Sylvia 41
 Clare, Dale 41, 66, 89
 Clark, Dielman 41, 69, 70, 72, 85
 Cloud, Lillian 19, 55, 59, 61, 65
 Cloud, William 13, 19, 63, 74, 85

Clute, Anna 15, 87
 Combs, Carolyn 33, 35, 63, 77, 80, 81
 Cook, Joan 37, 67, 77, 83, 88
 Cook, Sylvia 72, 69
 Cooper, Mrs. Mabel 23
 Cooper, Myron 41, 46, 51, 52, 76
 Covacevich, Mrs. Sue Jean 20, 74
 Craig, George Junior 27, 48, 49, 50, 51, 90
 Craine, Verdeen 16, 33, 35, 55, 62, 71, 82, 85
 Cranstan, Marvin 72
 Crilly, Barbara 37, 70, 77, 82, 83, 88
 Crilly, Laurene 37, 77, 82, 83
 Cullop, Gerald 48, 52
 Curtis, Carlo 41, 70, 77

— D —

Davis, Glenna 33, 69, 72
 Davis, Joan 67
 Day, Patricia 27
 Deatricks, Richard 41, 70, 71, 77, 88
 Deem, Venice 37, 62
 Derby, Wanda 41, 55, 59, 62, 82, 91, 94
 Detter, Marshall 36, 37, 46, 52, 60
 Dielmann, Edith 22
 Dielmann, Fern 22
 Dillman, Gene 27, 46
 Doughty, Don 40, 54, 85
 Doughty, Jacqueline 39, 41, 57, 63, 70, 71, 82, 99
 Drennan, Donald 32, 33, 52, 61, 85
 Drennan, Dorothea 41, 59, 63, 67, 71, 72, 79
 Dungan, Earl 21, 70, 71, 88
 Dunlap, Dale 15, 66, 75, 83
 Dvorak, Marlin 46, 47, 52, 60

— E —

Eason, Larry 41, 75, 78
 Ecker, Wanda 33, 35, 63, 70, 71, 77, 80, 81, 83
 Edens, Mary Esther 41, 62, 72
 Edens, Clifton 28, 48, 51
 Edwards, Lloyd 15, 60
 Everly, Robert 28
 Evers, Helen 18, 66, 82

— F —

Falen, Darrell 41, 49, 51, 68, 76
 Farney, James 37, 48, 49, 51, 53, 58
 Fao, May 28, 67
 Forsyth, Paula 41, 55, 59, 70, 74, 84
 Fox, Patricio 36, 37, 63, 76
 Fox, Rose Anna 37, 87
 Frank, Neil 33, 48, 49, 53, 54, 92
 Friend, Joyce 41, 59, 63, 72
 Fry, Frederick 28, 39, 57, 60, 81

— G —

Gagnebin, Elva 41, 63
 Gale, Marilyn 41, 55, 59, 62, 76, 85, 90
 Garralda, John 41, 66, 70, 71, 77, 88
 Gentzler, Donita 28, 62, 82
 Gerike, Ann 74
 Gibbon, Harold 33, 54
 Gill, Jeanette 41, 89

87	Gillaspie, Joe	33, 46, 55, 58, 60, 87
81	Gillig, Marjorie	37, 62, 72, 77
88	Glass, Bill	74
69	Goodwin, Barbara	37, 69, 70, 83
23	Gotchall, Betty	37, 67, 81, 83, 84, 87
76	Graham, Helen	16, 68
74	Gray, Robert	46, 60
90	Green, Kathryn	37, 54, 67, 83, 84
85	Gregory, Korol	33, 61, 69, 70, 71, 72, 79, 85
72	Grier, Velma	33, 69, 72, 83
88	Griffith, Jerry	33, 75
83	Gugler, Marjorie	34, 67, 83

— H —

77	Halbower, Donald	39, 68, 70, 72, 76
	Hamill, Roy	46
72	Hamlin, Evelyn	23
67	Haneke, Donald	22, 42, 69, 70, 72, 84
27	Haney, Lee	28
88	Haney, Lucille	21, 70
62	Hankins, Dorothy	68, 74
94	Hardy, Juanita	11, 28, 55, 82, 83, 87
60	Harms, Duane	34, 66, 70, 71, 72, 83
22	Harris, Elizabeth	38
46	Hartnett, Phyllis	34, 35, 62, 83, 88, 95, 97
85	Harvey, Edwin	28, 66
99	Haun, Joann	42, 62, 67, 70, 71, 77, 78, 82, 88, 98
85	Hawes, Helen	38, 59, 83
79	Hawkins, Michael	28, 54, 61, 85, 86
88	Hayward, Louis	28, 87
83	Hearne, Keith	46
60	Henderson, Harold	38, 39, 57, 61, 68, 72
	Henry, Miles	42, 61, 69, 70, 72
	Henson, John	42, 51, 70
	Herpolsheimer, Betty	38
78	Herrin, Patricia	16, 38, 55, 59, 62, 70, 83, 84
83	Highfill, J. M.	14, 23
72	Hill, Mrs. Joy	28
51	Hoag, Eleanor	11, 16, 66, 67, 75, 83
60	Holmes, Lois	42, 59, 70, 71
28	Hough, Raymond	28, 46, 53
82	Howe, Jack	15, 75, 89
	Hsueh, Susan	62, 67, 69, 83, 99
	Hudson, Don	74
76	Hudson, James	38, 46, 52, 58, 60, 85
58	Huffman, Jo Ann	38, 63, 72, 75, 79, 81
67	Hunt, Harold	19, 46, 47, 49, 58
84	Hutchcroft, Patricia	42, 62, 75, 84
76	Hutton, Virgil	14, 29, 55, 67, 81, 85

— I —

	Ibeawuchi, Asuzu	34
	Irwin, Paul	29, 66

— J —

53	Jackson, Irving	13, 23
70	Jackson, Paschal	38, 46, 58
88	James, Robert	66, 78, 88
82	Johnson, Arthur	38, 46, 47, 58
74	Johnson, Bonnie	42, 72, 87
54	Johnson, Jo Ann	29, 69, 71, 72
99	Johnson, Thelma	42, 83
	Jones, Joan Fennema	29, 67

— K —

	Kanaga, Carol	38, 59, 62, 95
	Kanaga, Charleen	26, 29, 62, 72, 87
	Kanaga, Charles	34
	Kelly, Rex	38, 66
	Kemp, Frederick	42, 54, 70
	Kerr, Constance	34, 35, 59, 63, 88, 90, 96
	Kesler, Robert	34, 48, 60
	Kimbrell, Ned	42, 54, 81
	King, Howard	66
	King, Thelma	34, 88
	Kinnamon, Anna	42, 77, 88
	Kirk, Ray	42, 46, 76
	Kirkhart, Wanda	34, 35, 68, 72, 75, 78, 88, 97
	Kiser, Luther	34, 39, 52, 56, 68, 76, 78
	Klitzke, Ladde	20, 34, 69, 70, 72, 76, 78, 79, 81
	Knowles, Richard	51
	Knowlton, Elmer	29, 66
	Kraus, Mervin	29
	Kuhn, Robert	46, 54, 58, 84

— L —

	Lamborn, Larry	42, 52
	Langhofer, Vela Mae	11, 34, 62, 69, 71, 72, 79
	Larkin, Wilma	42, 59, 67, 82, 83
	Lawrence, Mrs. Anna	23
	Ledgerwood, Billy	29
	Livingston, Nancy	42, 62, 69, 72, 76, 79, 85, 90
	Lavell, Carolyn	38, 62, 69, 71, 72, 79
	Lundeen, Allan	36, 38, 55, 61, 74, 76, 78, 85

— Mc —

	McCaleb, Charlene	29, 67, 80, 87
	McFall, Alice	34, 72, 83
	McFall, Ramona Hauser	29, 35
	McGuire, Sheldon	34, 56, 72, 76, 85, 87, 92
	McIntosh, Naomi	29, 83, 84
	McKaig, Marilyn	38, 62, 84, 85
	McNeil Lois	11, 29, 35, 69, 71, 72, 79, 83, 85, 86
	McQuirk, Dwna	38, 77, 87

— M —

	Mackie, David	17, 81
	Mansfield, Marlene	42
	Marten, Pauline	23
	Martin, George	34, 52, 56, 58, 60
	Mason, Dale	34, 66, 68, 70, 72, 76, 83, 90
	Matthews, James	42, 66, 70, 71, 72, 75
	Mayo, June	30, 62, 82, 83, 85, 87
	Messer Mildred	38, 72, 79
	Migia, Pacifica	38, 67, 83
	Miller, Wanda	30, 83, 84
	Mitchell, Virginia	69, 71, 72
	Montoya, Gregory	30
	Monypeny, William	12, 66, 87, 88
	Morgan, Dean	34, 61
	Murphy, Mildred	30, 35, 57, 62, 72, 85, 86
	Murray, Alvin W.	10, 11, 66, 75, 88, 89, 91
	Murray, Mrs. Bernice	23
	Murray, Patricia	42, 70, 71, 72, 76, 79, 83
	Muse, Charles	42, 70, 76

Adams,
Adams,
Afshar,
Almack
Almack
Ames,

Bailey,
Bailey,
Baker,
Balloch,
Banks,
Barnett,
Barron,
Beason,
Becker,
Becker,
Beeman
Beggs,
Bettis,
Beye, E
Biberste
Bigler,
Bird, N
Bishop,
Bloxom,
Book, P
Boyd, A
Broce,
Braddoc
Branson
Branson
Brinkme
Brinkme
Brothers
Brown,
Bunker,
Bunyan,
Burdette
Burdette

Cales, E
Calnan,
Carr, M
Carrall,
Carter,
Casburn,
Chaffin,
Chaffin,
Cheatha
Cheatha
Chism, A
Choate,
Chung, V
Circle, S
Clare, D
Clark, D
Cloud, L
Cloud, W

— N —

Nelson, Jeanette	38, 62, 67, 81, 85, 99
Newman, Everett	42, 51, 52
Newman, Frank	34, 48, 52, 56
Nicholson, Jetta	42, 63
Nalan, Blaine	14, 87

— O —

O'Brate, Tony	70
Olmstead, Mary	35, 42, 63, 82
Orme, Royce	30, 35, 46, 54, 58, 92
Ortiz, Isaac	30, 67, 74, 80, 81, 91
Osborn, Chester	22, 39, 42, 57, 61, 66, 68, 70, 71, 72, 76

— P —

Pake, Jim	52, 56, 58
Palmer, Frank Galen	22, 42, 52, 56, 61, 72
Parker, Emma	74, 87
Patterson, Genevieve	42, 63, 82
Phillips, David	40, 42, 61, 68, 69, 72
Phillips, Howard	30
Phillips, Jennis	38, 72
Phillips, Richard	34
Ploughe, Elizabeth	42, 62, 72, 76, 79, 83
Poovey, James	42, 48, 52, 60, 76
Poundstone W. J.	12, 66, 87
Powers, Marilyn	38, 63, 72
Preston, William	43, 60, 70, 89
Price, Lee	34
Priest, Betty	38, 62, 69, 72
Puckett, Robert	34, 52, 77, 78

— R —

Rader, Phillip	32, 35, 46, 58, 60
Ramsay, Dean	30, 66, 42, 78, 83
Rathnam, James	43, 69, 71, 72, 88
Redfield, Joan	39, 62, 70
Reed, Vaughn	35, 70, 82
Reimer, Herb	60
Renn, Nancy	43
Rethorst, James	39, 61
Rhine, Robley	35, 67, 75, 78, 80, 81
Riedel, Bernard	18, 74
Ricard, Leona	39, 67, 70, 83
Rittel, Patricia	43, 69, 70, 87
Roderick, Margaret	43, 55, 59, 63
Rogers, Wayne	30
Rose, Isolde	39, 67, 81, 83, 87, 100
Rosecrans, Mrs. Eva	23

— S —

Satterthwaite, Lloyd	43, 69, 72
Saville, John	43, 46, 48, 52, 60, 76
Scarrow, Luella	23, 76, 84
Schifferdecker, Virginia	43
Schul, Bill	30
Schwatken, Joline	43, 62, 69, 70, 72, 83, 100
Seely, Floyd	43

Sellers, Grace	20, 69
Sherkat, Mehdi	18, 30, 55, 67, 74, 91
Shields, Mrs. Edith	23
Shields, Kathleen	43, 63, 71, 72, 77, 79
Shuler, Janice	43, 70, 72, 76, 83
Simpson, Clarence	16, 67
Sizelove, Merlin	43, 66, 69, 72, 77
Skinner, Mrs. Mildred	13, 82, 85
Smith, Orcenith	20
Smith, Sharran	30, 74
Snyder, Eldon	31, 75, 85
Snyder, Peggy Miller	31, 63
Snyder, Murrel	14, 66, 75, 84, 89
Somerville, Patricia	11, 39, 62, 70, 82
Standiford, Larry	43, 46, 61
Stayton, Marilyn	39, 72, 76, 82, 83, 84
Stephenson, Ramona	43, 63, 67, 77, 82, 88
Stinson, Jerry	43, 76
Sorber, Edna	17, 75
Spitze, LeRoy	18, 74
Stowell, Allen	17

— T —

Thurtell, Mary	43, 59, 72, 76, 83
Tiner, James	31, 46, 58
Tiner, Marjorie Wright	31, 68, 78
Toledo, Joseph	35, 74, 76, 77, 87, 91
Townsend, Don	43, 51, 61
Tretbar, Harold	31, 68, 77, 78, 80, 86
Troyer, Patricia	39, 69, 70, 72, 79, 84, 87

— V —

Valencia, Rey	39, 67, 71, 72, 83
Vandergriff, Darlene	43, 59, 63, 68

— W —

Walker, Betty	11, 39, 63, 76, 82, 83, 84, 85, 100
Walker, Glynda	43, 59, 63
Walker, Jack	43, 60
Wallace, Cecil	39
Warren, Colleen Tarrant	35, 72, 87
Weber, George	23
Weikal, Barbara	39, 62, 82
Wells, Richard	43, 72
Wilhelm, Holmes	17
Willan, Barbara	43, 70, 71
Williams, Bobby Gene	46
Williams, Joyce	35, 39, 43, 57, 72, 76
Williams, M. W.	23
Williams, Ross O.	21, 71
Wise, Maurice	43, 53, 66
Witter, William	40, 43, 46, 51, 52, 60, 76
Woodworth, Geraldine	43, 82, 83

— Y —

Yoder, Charles	35, 70, 71, 72
Yoder, Gene	39, 61, 70, 81
Young, Donald	26, 31, 66, 67, 85, 86, 93
Young, Marlin	35

..... 20, 69
0, 55, 67, 74, 91
..... 23
3, 71, 72, 77, 79
3, 70, 72, 76, 83
..... 16, 67
3, 66, 69, 72, 77
..... 13, 82, 85
..... 20
..... 30, 74
..... 31, 75, 85
..... 31, 63
4, 66, 75, 84, 89
1, 39, 62, 70, 82
..... 43, 46, 61
2, 76, 82, 83, 84
3, 67, 77, 82, 88
..... 43, 76
..... 17, 75
..... 18, 74
..... 17

3, 59, 72, 76, 83
..... 31, 46, 58
..... 31, 68, 78
4, 76, 77, 87, 91
..... 43, 51, 61
8, 77, 78, 80, 86
0, 72, 79, 84, 87

9, 67, 71, 72, 83
..... 43, 59, 63, 68

83, 84, 85, 100
..... 43, 59, 63
..... 43, 60
..... 39
..... 35, 72, 87
..... 23
..... 39, 62, 82
..... 43, 72
..... 17
..... 43, 70, 71
..... 46
9, 43, 57, 72, 76
..... 23
..... 21, 71
..... 43, 53, 66
6, 51, 52, 60, 76
..... 43, 82, 83

..... 35, 70, 71, 72
..... 39, 61, 70, 81
6, 67, 85, 86, 93
..... 35