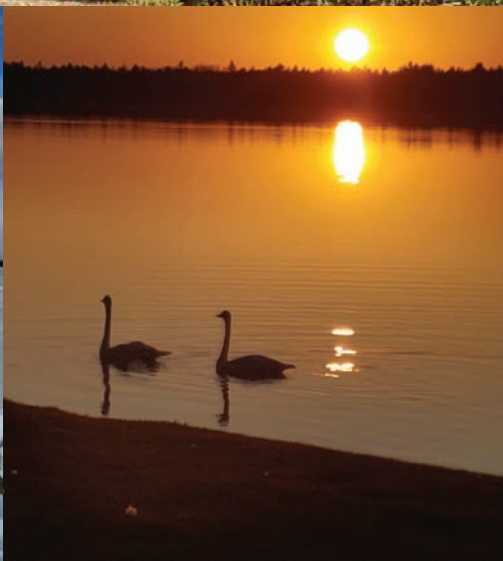


Manistique 2022 VISITORS GUIDE



WWW.VISITMANISTIQUE.COM





DESTINATION KEWADIN

Kewadin Casino Manistique is nestled in the heart of the UP near the shores of Lake Michigan. Here you'll find the perfect destination for your favorite slot machine or virtual table game along with tasty drinks at Team Spirits Bar and delicious meals at Mariner's Cove Restaurant.

Offering thrilling gaming action, tastes of the region, and an exciting place to be with friends; it's easy to choose Kewadin Casino Manistique as your destination for a great time.

**Kewadin**
MANISTIQUE
CASINO

1-800-KEWADIN | www.kewadin.com



MANISTIQUE · ST. IGNACE · HESSEL · SAULT STE. MARIE · CHRISTMAS

TREASURE CITY

HOME AND LODGE DECOR, TEES, SWEATS, MOCCASINS, SOUVENIRS,
CANDY & FUDGE, CANDLES, JEWELRY, & SO MUCH MORE



LARGEST GIFT SHOP UP NORTH

10,000 SQUARE FEET OF
SHOPPING UNDER ONE ROOF
4 MILES EAST OF MANISTIQUE ON
HIGHWAY 2



OPEN 7 DAYS A WEEK AND MOST HOLIDAYS

Find us on Facebook treasurecityupmi.com (906) 341-2364



BE SURE TO SHOP OUR 2ND LOCATION TRADER BOB'S

LOCATED AT 375 TRADER'S POINT DRIVE ON THE MANISTIQUE RIVER BY
THE MANISTIQUE LAKESHORE CAMPGROUND

NAUTICAL GIFTS, TEES & SWEATS, GOURMET CANDY, BOOKS, TOYS, AND
MUCH MORE! HAND-DIPPED ICE CREAM • OPEN 7 DAYS A WEEK

(906) 286-4500



WELCOME!

GREETING FROM THE CITY OF MANISTIQUE!

On behalf of the City of Manistique, the Emerald City, it my pleasure to extend a warm welcome to all visitors and residents who enjoy the many wonderful things our community has to offer!

Manistique is a hidden gem and for those of you who have discovered us, welcome! We are a northern U.P. community who is proud of our heritage and values our history and plans for our future. This is evident when you enter the downtown areas and notice the artwork displayed on the buildings, *Imagine* and *Discover!* As you stroll down the main street you will find a variety of shops, taverns, and eating choices. We celebrate the summer months with our Annual Folkfest Celebration, the Independence Day Parade, and the Annual Labor Day Car Show. Every weekend starting in May, visit Makers Market in Triangle Park and shop from our local artisans and vendors. As you Discover the community, you will find there are few outstanding food trucks offering delicious choices!

Take a stroll on the boardwalk along Lake Michigan and learn about the famous shipwreck at the Carl D. Bradley Lakeview Memorial Park. Follow the path to the of the pier and check out the East Breakwater Lighthouse. If you prefer camping, take your pick! Camp on Lake Michigan at our new Manistique Campground, on Indian Lake at the Indian Lake State Park or along the river at the Indian River campground. There are many other campgrounds nestled in the lakes as you travel outside of town. Fishing is an opportunity of a lifetime here and there are numerous options such as lake, river, or stream fishing. We can't guarantee you will catch a fish, but you will certainly enjoy trying.

We are proud of our heritage and there are many historical sites to visit. Spend the afternoon at Palms Brook State Park and ride the raft out to Kitch-iti-kipi Spring and learn the legend of the name. Take the morning and travel out to the Seul Choix Point Lighthouse in Guilliver. This spot is rich with stories of the area that dates to the days of the dinosaurs. Take a day trip to Fayette State Park and be amazed at the haunting settlement that used to be the Upper Peninsula's most productive iron-smelting operations. This enclave is surrounded by limestone cliffs and the bay of Lake Michigan. The first time I visited there, the beauty took my breath away.

Manistique is centrally located; we are a short drive from the Pictured Rock Lake Shore or the sights of Lake Superior or the famous biking trails in Marquette. There are many unique places to stay in town with your choice of hotels, cabins, and rental homes, unless you prefer to camp.

Welcome to our Home! We hope you enjoy your stay with us!

Sincerely,

Kimberly Shiner

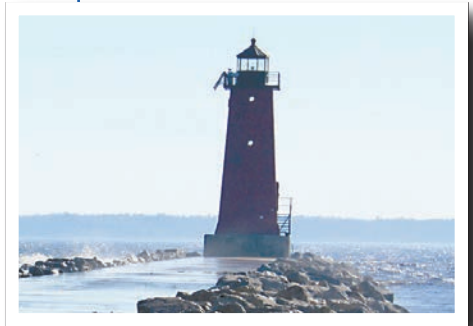
Mayor

Table of Contents

WHAT'S INSIDE

- 4** Welcome Letter
- 6** Friends of Indian Lake and Palms Book
- 7** Natural Things to See
- 14** Cross-country Skiing and Snowshoeing
- 16** State Snowmobiling Trails
- 18** Snowmobiling
- 20** Manistique Attractions
- 25** Church Directory
- 28** Fishing
- 40** Featured: Northwoods Resort
- 41** Nearby Attractions
- 45** Featured: Top of the Lakes Communities Association
- 48** The City of Manistique
- 51** The Haywire Grade
- 56** Indian Lake and Palms Book
- 60** Seney National Wildlife Refuge
- 62** Featured: Woodstar Beach Campground
- 63** The Big Spring
- 69** Summer Concert Series

- 70** The Manistique Hub
- 72** The Munising Hub



This publication is a Product of the Daily Press, Escanaba, Michigan

PUBLISHER

Corky DeRoeck

Email: cderoeck@dailypress.net
906.786.2021 Ext 101

CIRCULATION

Kristal Soper

Email: ksoper@dailypress.net
906.786.2021 Ext. 116

ADVERTISING MANAGER

Terrie Belongie

Email: tbelongie@dailypress.net
906.786.2021 Ext 110

ADVERTISING

Want to be included in 2023?

Contact Sarah Maki;

Advertising Executive

Email: smaki@dailypress.net
906.786.2021 Ext 115



Manistique Visitor's Guide is published by the Daily Press, 600 Ludington Street, Escanaba Michigan 49829. • 906-786-2021

Feature

FRIENDS OF INDIAN LAKE AND PALMS BOOK



An Ojibwa Fire Ceremony put on by the Friends

By Ilsa Minor

The Friends of Indian Lake & Palms Book Committee is busy supporting two of Upper Michigan's gems.

The group, which was established in 2010 and received gained 501(c)3 non-profit status the following year, raises funds throughout the year to fund improvements at the parks. At Indian Lake, the group purchased bike racks near the main restroom and shower facility, established a lending library with books and magazines for campers, and installed a shower tower at the beach. At Palms Book State Park, the group funded extending fencing near the raft on the Big Springs.

The Friends also support family-friendly programming for campers at Indian Lake's South Shore Campground. These programs range from live music to magicians. Some programs are aimed directly at children, but many are designed to appeal to campers of all

ages. All programs are free of charge thanks to the Friends.

The Friends of Indian Lake & Palms Book Committee is entirely composed of volunteers and is always seeking new members. Members must be 18 years of age or older. Examples of activities members would participate in include the Friends' annual raffle and manning booths at craft and sport and recreation shows, as well as activities in the parks.

For more information about becoming a friend of Indian Lake and Palms Book state parks, call Ralph Lundquist, committee chairman, at 906-474-6983 or email rlundquist@chartermi.net.

Indian Lake State Park is located at 8970 W County Road 442, Manistique MI. To contact the park directly, call 906-341-2355.

Palms Book State Park is located on M-149, a mile north of the Co Rd 455 junction. The park can be reached at 906-341-2355.

For more on Indian Lake and Palms Book, see page 56. For more on the Big Spring, see page 63.

Natural Wonder

THINGS TO SEE

Seney Wildlife Refuge

Seney National Wildlife Refuge is managed by the U.S. Fish & Wildlife Service. The National Wildlife Refuge System has over 146 million acres of lands and waters with 567 refuges in all 50 states and six territories.

The Refuge lands are divided. The largest portion, 95,210 acres, is located near the town of Seney, Mich. The 55 acre, Whitefish Point Unit, can be found 10 miles north of Paradise, Mich.



Seney National Wildlife Refuge

U.S. Fish and Wildlife Service photo

Continued on page 8

LINDA'S BREAD BOX & SPORTING GOODS

WE ARE ON YOUR WAY TO BIG SPRING & INDIAN LAKE!

- Full Line of GROCERIES • ATM
- PROPANE • GASOLINE
- CAMPING SUPPLIES
- FISHING & HUNTING LICENSES
- BEER & WINE • PACKAGE LIQUOR
- LIVE BAIT • AUTOMOTIVE SUPPLIES
- BAGGED ICE • MICHIGAN LOTTERY
- Marble Arm Knives
- U.P & Michigan Novelty, Shirts, Mugs, Bags

We have a LARGE SELECTION of FISHING TACKLE & HUNTING ACCESSORIES!

RODS, REELS, COMBOS & FISHING TACKLE
BAGGED BAIT, AMMO, CALLS, GUN CASES, KNIVES & MORE!

Find us on Facebook
@Lindasbreadbox

YOUR ONE-STOP STORE!

**10N STATE HWY. M-149
COOKS, MI**

906-644-2284
CREDIT CARDS, BRIDGE CARDS

10N State Hwy. M-149, Cooks, MI 49817

906-450-3248

Mary DeKeyser - Broker/Owner

Continued from page 7

The Refuge was established in 1935. At that time the Civilian Conservation Corps (CCC) was in full swing and the dollar-a-day boys were put to work constructing a series of pools to entice ducks and geese to use Refuge lands. Today these pools can be seen from the 7-mile Marshland Wildlife Drive and the 1.5 mile Fishing Loop, which start near the visitor center. The roads are one-way with breathtaking views and places you can pull off to look around, fish, eat berries, or take pictures.

The Refuge is a mosaic of shrubs, wetlands, forests, pools, and grasslands - a bird watchers dream with over 200 species. Common sightings include American bittern, sharp-tailed grouse, Wilson's snipe, belted kingfisher, cedar waxwing, ducks, warblers, and woodpeckers. Bald eagles, osprey, common loons, Canada geese, and trumpeter swans can be seen tending their nests and chicks.

Deer, muskrat, mink, fisher, beaver, and the occasional wolf or moose can be seen as well.

Refuge explorers may want to start at the Visitor Center, open May 15 to Oct. 20 from 9 a.m. to 5 p.m. daily. Visitors will find maps, brochures, tour information, and a 15 minute film. Borrow a pair of binoculars, activity pack or fishing gear. Jr. Ranger materials can be picked up at the front desk. Visitors can download the Tour Seney Refuge or Agents of Discovery apps from Google Play or the App Store for private tour options. The Marshland Bookstore offers books and souvenirs.

Take a hike or hop on your bike and explore. All refuge roads are open to non-motorized modes of travel. The Pine Ridge Nature Trail and the Northern Hardwoods Trails are great places to hike, ski or snowshoe. Paddlers can enjoy a float down the Manistique River.

At the Whitefish Point Unit visitors can enjoy a walk on the beach or the trail to the Point Boardwalk. In spring and fall thousands of birds can be seen crossing Lake Superior going to or from Canada. From May to August large portions of the beach are closed for the nesting endangered piping plovers.

BIG Spring — 'Kitch-iti-kipi'

Big Spring, "Kitch-iti-kipi," is one of the most popular and well-known sites in Schoolcraft County and has a rich Native American History. Native Americans named the area of present-day Manistique "Unamanitigong," which means "vermillion," after the ruddy-colored river.

Two hundred feet across and forty feet deep, Kitch-iti-kipi is Michigan's largest spring. Over 10,000 gallons a minute gush from fissures in the underlying limestone. The flow continues throughout the year at a constant temperature of 45 degrees Fahrenheit.

By means of a covered self-operated observation raft, visitors are guided to vantage points overlooking fascinating underwater features. Ancient tree trunks, lime-encrusted

Continued on page 10



END OF THE ROAD WINERY
GERMFASK • MICHIGAN

SWIRL • SIP • SWALLOW

Wine Tasting & Sales

*Stop for a Taste...
Leave with an Experience*

Produced & Bottled by:
Jim & Robin Barker
6917 Burns Rd., Germfask, MI 49836
906-450-1541 or 906-450-1549
Open May 14 - October 15, 2022
Tuesday thru Saturday 11am to 5:30pm
Call to set an appointment for tastings outside
of our seasonal scheduled days. We are happy
to accommodate.

endoftheroadwinerymi.com



Kitch-iti-kipti

Michigan DNR photo

See the Falls in Style!



Get On Board!

Tahquamenon Falls Riverboat Tour & the Famous Toonerville Trolley

First ride on the longest 2 foot railroad in the USA through scenic wilderness to the river and the waiting riverboat.

The riverboat offers comfortable seating, lunch counter, beverage bar and restrooms onboard.

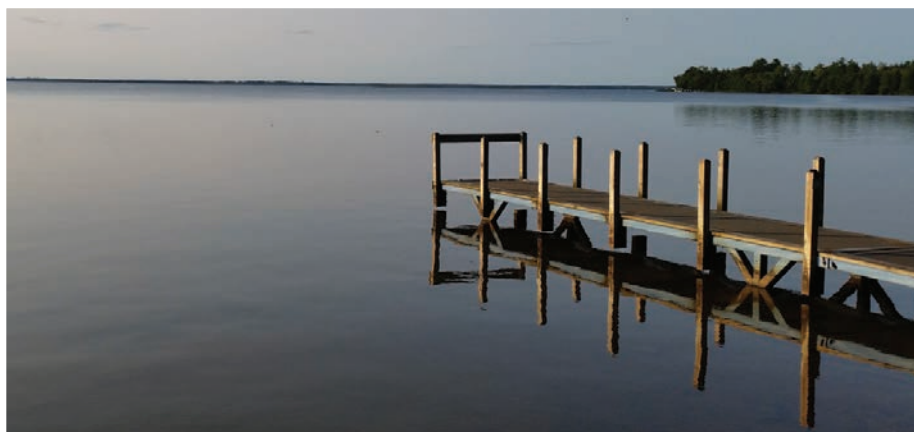
The Captain provides narration on history, animals, and points of interest throughout the cruise.

Buy your tickets online

www.TRAINANDBOATTOURS.com

Board at Soo Junction just off M-28 at mile marker 246

1-888-77-TRAIN or 906-876-2311



Indian Lake State Park

Continued from page 9

branches and fat trout appear to be suspended in nothingness as they slip through crystal waters far below. Clouds of sand kept in constant motion by gushing waters create ever-changing shapes and forms, a challenge to the imagination of young and old alike.

Near the spring is a shaded picnic area, modern toilet facilities and a park store. The park concession store is open daily May 15 through October 15, rain or shine, and offers a variety of souvenirs, shirts, and food items.

There is no camping or fishing at the park and an admission fee is charged to enter. Big Spring "Kitch-iti-kipi" lies to the north, on M-149, 11 miles off U.S. 2. For more information call 906-341-2355 or 1-800-342-4282.

Indian Lake State Park

Indian Lake State Park, located off County Road 422, next to Palms Book State Park/Kitch-iti-kipi, is one of the area's most popular campgrounds and inland lake recreation areas. Indian Lake is fed by Kitch-iti-kipi and offers excellent fishing and swimming.

The sandy lake is over 3 miles wide, with a maximum depth of 18 feet. Gamefish in the lake include northern pike, muskellunge, walleye, sunfish, yellow perch, smallmouth

bass, rock bass, black crappie, brown trout, ciscoes and lake sturgeon. On the lake, a small shrine and plaque mark the site of a historic log and bark chapel built in the early 1800s.

A short distance north is an abandoned

GRAY WOLF LODGE

INDOOR POOL • CABLE TV
PRIVATE BEACH



- 40 Room Lodge
- Whirlpool/Spa Rooms

6770 US Hwy. 2
Manistique, MI
For Reservations
Call
906-341-2410



Native American cemetery.

For more information, go to www.michigan.gov/dnr.

Thompson State Fish Hatchery

Rainey Wildlife Area

Hiking trails, boardwalks, and an elevated observation platform provide outstanding views of wildlife in and along Smith Creek, Smith's Slough, and Indian Lake. The observation platform has a barrier-free ramp that reaches to a mid-level, and offers a long scenic vista to the sedge meadow and open water habitat. The trail crosses Smith Creek, which flows through a patterned fen to Indian Lake. It overlooks the sedge meadow and open water habitat of Smith's Slough and Indian Lake.

This site has no modern facilities, so come prepared. It is named after and has a memorial site dedicated to a fallen Vietnam veteran.

The Thompson State Fish Hatchery provides a learning experience for people of all ages, and offers a look at a wide range of fish species. Located at 944 S State Highway M-149, Manistique, the hatchery was established in 1922 and completely renovated in 1978. This facility can produce a wide range of fish species for both inland and Great Lake waters because of its unique water supply. Coldwater species produced at Thompson in 2008 include: Chinook salmon, steelhead, rainbow trout, and brown trout. Walleye fry are the only coolwater species produced at Thompson.

This facility has both indoor and outdoor rearing capabilities. The indoor facility contains 42 tanks for rearing of small fingerlings, while the

Continued on page 12

TOP O' LAKE
SPORT SHOP
MANISTIQUE

AT THE TOP OF THE LAKE MICHIGAN

206 S. CEDAR STREET
MANISTIQUE, MI 49854
906-341-5241

We have BAIT
Crawlers &
Worms

Fishing
Camping
RV Supplies
Marine
Hunting
Muck Boots
& More

Celebrating over 70 Years
of Recreational fun!



Thompson State Fish Hatchery

Michigan DNR photo

Continued from page 11

outdoor facility contains 12 raceways for rearing yearling trout. Thompson hatchery had a new interpretive center installed in 2003. According to the Michigan DNR website, the center provides information on the importance of small tributaries to the Great Lakes, how watersheds work, how a hatchery operates, as well as art work and a hands-on computer center that challenges people of all ages to learn about hatcheries and fisheries management.

Thompson Hatchery's grounds are open to the public at no charge from 7:30 a.m. to 3:30 p.m. seven days a week. For more information, or to schedule group tours call 906-341-5587.

Hiawatha National Forest

Named after Longfellow's poem "The Song of Hiawatha," the Hiawatha National Forest is located in the Central and Eastern Upper Peninsula of Michigan.

The forest encompasses 880,000 acres, and receives over 1.5 million recreational visits

per year. The forest affords visitors access to white sand beaches and relatively undeveloped shorelines along three of America's inland seas — Lakes Superior, Michigan, and Huron.

For more information on camping, hiking, hunting, fishing and other recreational activities contact the Hiawatha National Forest, Manistique Ranger District at 906-341-5666.

Environmental Education Lab

The Schoolcraft County Environmental Laboratory is a system of trails located on 80 acres of wooded township land, a few miles east of Manistique on Krummich Road.

The purpose of the lab is to provide hiking, nature appreciation and environmental education opportunities for the general public and local schools. The system includes an observation platform, boardwalk, and interpretive trails and hiking loops totaling 1.79 miles.

 **Habitat for Humanity**
ReStore

*In the
Blanchard Center*
**401 Deer Street
Manistique, MI 49854
906.341.1444**

Present this ad for
25% Off
*your next
purchase**

**Limit 1 coupon per household
Expires 12/16/22*

DOUBLE DOWN

*on
award-winning
Championship
golf*



Michigan



Award-winning golf has become a centerpiece of the Island Resort & Casino, home to both Sweetgrass and Sage Run Golf Clubs. Sweetgrass, consistently ranked among Golfweek's Best Courses, features an open layout with some of the game's most fun greens to putt. Sage Run Golf Club provides a different kind of golf experience where holes flow through the hardwoods and around a ridge providing a thrill ride for golfers of all abilities.

Hotel/Golf Packages
from **\$95**

PURE MICHIGAN



Sage Run
GOLF CLUB

Harris, MI • www.islandresortgolf.com • 877-ISL-GREEN

Winter Wonderland

CROSS-COUNTRY SKIING AND SNOWSHOEING

When winter snows turn the Upper Peninsula into a frozen wonderland, there's no better way to explore the glittery unknown than by putting on a pair of skis or snowshoes and hitting the trails. For more information on cross-country ski and snowshoeing trails and printable maps, visit www.visitmanistique.com.

Ashford Lake Pathway

Hiking/Cross-country skiing
16 miles N of Manistique on M-94
3 trail loops - 3 miles, 6 miles, and 9 miles

Christmas Pathway

Cross-country skiing
5 miles W of Munising on M-28, Hiawatha National Forest
4 trail loops (including two that are lighted) - 0.5 miles, 1 mile, 0.3 miles, and 3 miles

Indian Lake Pathway

Hiking/Cross-country skiing/Biking
9 miles W of Thompson via M-149
3 trail loops - 1 mile, 3 miles, and 4.5 miles

Pictured Rocks National

Lakeshore Trails
Cross-country skiing
Pictured Rocks National Lakeshore
8 trails - 11.7 total miles

Seney National Wildlife Refuge

Hiking/Cross-country skiing
9 miles of groomed trails



**Modern cabins set on
a secluded lake**

**3 miles north of
Oswald's Bear Ranch**

810-531-1344



Photo by Hopson Road

Grover Real Estate



Your Local Real Estate Experts!

As Schoolcraft County's top real estate brokerage, we are ready to assist you in all your buying or selling needs.

Contact us today for more info, and to take the next step in your real estate journey!

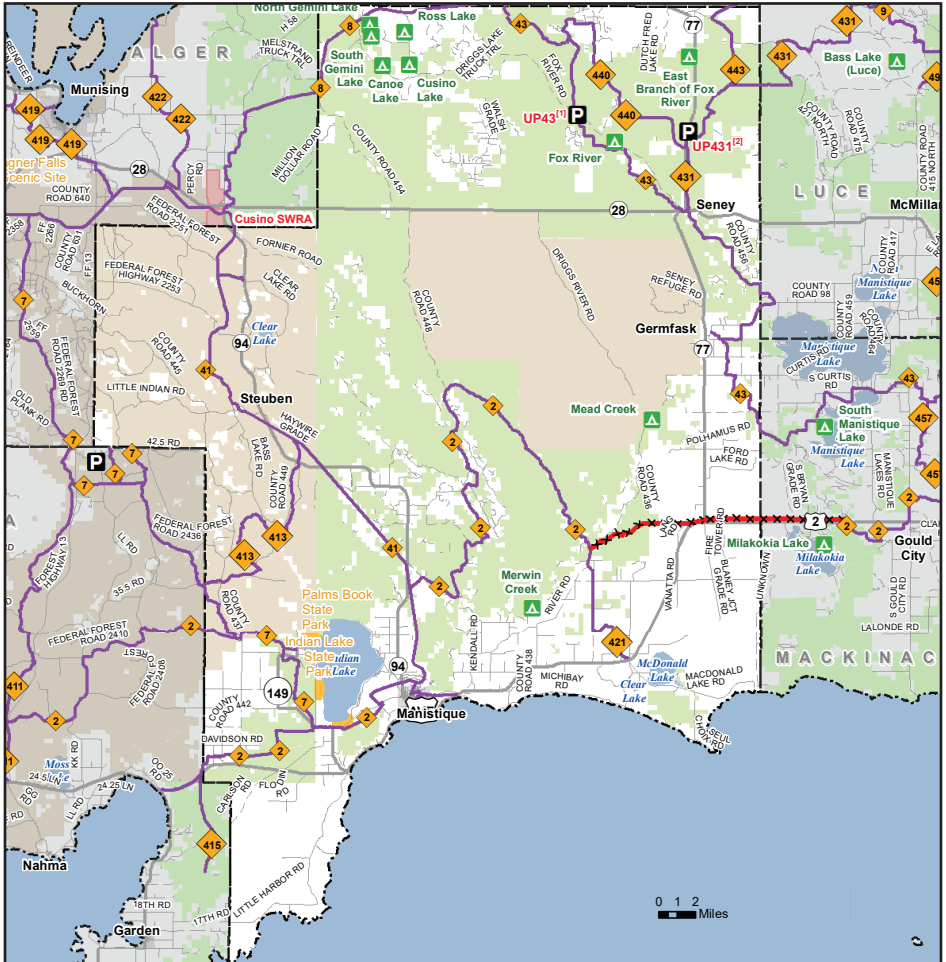
David Muxlow 906-450-0184
Abbey Wood 906-450-0222
Syrea McDonald 906-286-1407
Travis Wood 906-450-5080
Lynne Giles 906-450-0543
Corrina Johnson 906-286-2978
Hali Holt 906-286-1652
Jim Wethy 906-450-2780



GROVER REAL ESTATE
PO Box 92 - 771 E Lakeshore Dr.
Manistique, MI 49854
906-341-2131
email@groverrealestate.com
www.groverrealestate.com

Where to Ride

SNOWMOBILE TRAILS



Michigan Department of Natural Resources
Designated Snowmobile Trails
 Schoolcraft County
 Updated: 2/2/2022

- Parking lot
- State forest campground
- Permanently closed trail
- Designated snowmobile trails
- Highway
- Paved road
- Gravel or dirt road
- State park boundary
- State forest land
- State game area
- Federal land
- Lakes and rivers
- City or village
- County boundary



Parking
 UP43^[1] Southside Fox River Rd SE of Int with Wagner Taylor Dam Rd.
 UP431^[2] Eastside M-77, North of Int with Reservoir Dam Rd.



Michigan.gov/Snowmobiling

CURTIS

THE HEART OF THE
MANISTIQUE LAKES AREA

1-800-652-8784 • curtiscofc@sbcglobal.net



Photo Courtesy of Ray Lyons



Find us on
Facebook!

THE VILLAGE OF CURTIS BETWEEN THE MANISTIQUE LAKES

CALL OR CHECK THE WEB FOR OUR YEAR OF EXCITING EVENTS FOR
WINTER • SPRING • SUMMER • FALL • YEAR-ROUND

FROSTBITE PIKE CONTEST • GROOMED SNOWMOBILE TRAILS • OKTOBERFEST • INDEPENDENCE DAY PARADE
& CELEBRATION • SEASONAL FISHING CONTEST

WWW.CURTISCHAMBER.COM

THE MEMBERS AND ASSOCIATE MEMBERS OF THE MANISTIQUE LAKES
AREA TOURISM BUREAU WELCOME YOU.

- BIRCH SHORES RESORT • CHAMBERLAIN'S OLE FOREST INN • KOZY'S RESORT
• LOG CABIN RESORT & CAMPGROUND
- MANILAK RESORT • NORTH SHORE RESORT • PINE BLUFF RESORT
- SAND & STARS RESORT • SHERMAN'S RESORT • SUNSET PINES RESORT
- SUNSET POINTE RESORT

ASSOCIATE MEMBERS: BIG MANISTIQUE RESORT • CURTIS SERVICE •
FISH AND HUNT SHOP • SLEEPY EYED • GOOSE RESORT • STATE SAVINGS BANK



www.curtismi.com

AREA TOURISM BUREAU

Kicking Up Powder

SNOWMOBILING

The Upper Peninsula is a true destination for snowmobilers. Whether you want to take a quick ride along the Manistique River on a scenic trail or tap into the more than 2,000 miles of groomed trails the U.P. offers, there's something for every snowmobiler.

Approximate Mileage

Gray Wolf Lodge to Trail Head – 3.5 Miles

Manistique to Big Springs – 16 Miles

Manistique to Jack Pine – 19 Miles

Manistique to Shingleton – 39 Miles

Manistique to Munising – 47 Miles

Manistique to Cooks – 18 Miles

Manistique to Blaney – 47 Miles

Manistique to Naubinway – 66 Miles

Manistique to Newberry – 75 Miles

Manistique to Buck Horn – 51 Miles

Manistique to Garden – 30 Miles

Manistique to Curtis – 68 Miles

Manistique to AuTrain – 59 Miles

More distances on opposite page.



Have your picture taken with the cubs!

- Largest bear only ranch in the United States.
- 41 bears, no cages, all habitats ~ walkabout
- Feed and pet the cubs
- All natural habitats to view and feed the bigger bears

\$25 per car - Free admission to active military

13814 County Road 407, Newberry, MI 49868
 (From Newberry go 4 miles north on M-123 towards Tahquamenon Falls. Turn left at 4 Mile Corner (Deer Park Rd., Muskallonge Lake, H-37 H-407) and go 4 miles.)
 906-293-3147 oswaldsbearranch.com

OSWALD'S BEAR RANCH

Manistique to Grand Marais – 91 Miles

Manistique to Big Bay – 140 Miles

Manistique to Paradise – 137 Miles

Manistique to Gwinn – 112 Miles

Jack Pine to Big Springs – 19 Miles

Shingleton to Buck Horn – 12 Miles

Grand Marias to Paradise - 78 Miles

Curtis to Seney – 23 Miles

Seney to Grand Marais – 46 Miles

Shingleton to Grand Marais – 52 Miles

Newberry to Paradise – 62 Miles

Newberry to Grand Marais – 59 Miles

Permit Information

Snowmobile trail permits are available online at michigan.gov/dnr and are required for use of state-designated trails, public roads, and private roads (where authorized for snowmobile use).

See page 16 for a map of state-approved snowmobile trails in Schoolcraft County.



Metro photo

GOLF



A remarkable Golf Course In Michigan's Beautiful Upper Peninsula

18 Holes - Par 72 ~ Slope rating 133

All bent-grass greens, tees, and fairways impeccably maintained
Superb fairway and rough definition, fast greens

● Reasonable Green Fees

● Power Cart Rentals

● Pro Shop

● Restaurant & Bar

FOR TEE TIMES AND INFORMATION SEE US AT:

1305 N. Birch Street • Manistique, MI

906.341.5600 • www.indianlakegolfcourse.com

You Don't Need to Go Far

MANISTIQUE ATTRACTIONS



East Breakwater Lighthouse

Lighthouse and Boardwalk

The East Breakwater Lighthouse, built in 1916, is 35 feet tall and stands at the harbor entrance of the Manistique River. The light is housed in a bright-red square tower that is capped by a black parapet lantern room. A black staircase climbs up from the pier several feet to a door at the bottom of the tower. Only a few small round windows allow light into the interior of this structure. Parking for visitors is available at Lakeview Park, the city beach and marina.

The Manistique Boardwalk stretches along Lake Michigan's north shoreline. It's an easy, level, two-mile walk for everyone to enjoy the

FLATIRON BREWING COMPANY

COMING SOON TO
MANISTIQUE!

VISIT US FOR OPENING DATES!

www.flatiron-brewing.com

375 Harbor View Dr. Manistique, MI 49854

(616) 500-3838





Pioneer Day

beautiful sunrises, sunsets, or the day.

The wood and cement boardwalk features three bridges, several benches, observation and interpretation areas, and a great view of the lighthouse.

historical demonstrations that keep the history of Schoolcraft County alive.

Pioneer Day

Pioneer Day is an annual tradition that started out as a fundraising event for the Schoolcraft County Historical Society. Over the years, the event has grown to be a community favorite, with musicians, crafters, and

Folkfest

Manistique’s Folkfest is a celebration that takes place the second Saturday in July on the main street of the city.

Art and craft booths display their diverse wares on the second block continuing north on Cedar Street, while the aromas

Continued on page 22

HARBOR MOTEL
WIFI AFFORDABLE RATES

The Only Motel Downtown Manistique

14 Rooms - Queen / Double / Triple • All Rooms Are Ground Level • Air Conditioning • Cable TV Coffee Makers • Phones • Refrigerators & Microwaves • WiFi - Internet • Kitchenette/Apt (weekly or monthly) • **Walking Distance - store, pizza, bars, food** • Across from Manistique Marina • Pets Welcome • Fish Cleaning Station with Freezer for caught fish

(906) 341-5191 • 311 S Cedar St., Manistique MI 49854

Continued from page 21

of multicultural food booths tempt visitors down the street. A central stage provides ethnic music and entertainment with the Paul Bunyan Beer Garden close by.

The celebration includes a children's area and a variety of information booths for adults to investigate. Folkfest is truly an event for everyone.

Consistently ranked as a favorite small town getaway by visitors, Manistique's natural beauty provides the perfect backdrop for a day of antiquing and shopping. Specialty stores, charming restaurants, friendly residents, cozy taverns, the historic water tower and lighthouse, plus a full calendar of festivals, entertainment and special events, combine to make Manistique irresistible — and it's on the shores of beautiful Lake Michigan.

For applications for the art and crafts booths or to be a food vendor, call Manistique City Hall, (906) 341-2090.

Living Waters Memorial Fountain

The Manistique GFWC Women's Club spent five years planning, fundraising and building the "Living Waters Memorial" fountain.

The fountain is a memorial to remember and celebrate the generations of people who have developed, protected and passed on the magnificent bounty and beauty of Manistique's resources. It is a reminder of stewardship to the Manistique community, that its resources be guarded, preserved and passed on to benefit the future generations of Manistique.

Many engraved bricks have been placed around the fountain in memory of, or in honor of, loved ones, businesses — past and present — and organizations.



MDS CAA EARLY CHILDHOOD PROGRAM

Head Start Offers FREE:

- * Child Development Curriculum
- * Bussing in approved 5-point seats
- * Healthy Meals & Snacks
- * Health Services
- * Potty training assistance (pull-ups & diapers provided!)
- * Monthly family activities (including meals, parent education & job skill opportunities!)

"Serving Menominee, Delta and Schoolcraft Counties"

Manistique Early Childhood Center, 426 Chippewa Avenue, Manistique • 341-6423

Central Park

Central Park provides 40-acres of recreational space. It is located on N. Maple St., next to Little Bear West Arena.

It was built around Manistique’s quarry pond, which has been cleaned to reveal crystal clear waters, perfect for a swim. On one end of the quarry is a smooth, sandy beach area, ideal for laying out a towel, sunbathing and relaxing. Fishermen of all skill levels can fish from either of the two fishing piers and catch a trout from the stocked waters. There are also plenty of recreational and physical fitness opportunities at the park, including an archery range, a walking path, baseball fields, picnic areas, and basketball and tennis courts.

Schoolcraft County Historical Park

The Schoolcraft County Historical Park is

located in Manistique’s central district. Among the park’s attractions is Manistique’s Water Tower, a Roman period architectural landmark with a 200,000 gallon capacity. The tower was built in 1922, at a cost of \$62,450. The 200-foot octagonal brick tower commemorates the birth of the city’s water works. Also in the park is a home and log cabin of early residents of Schoolcraft County.

The Siphon Bridge

The Siphon Bridge, which lies in the heart of Manistique, was built in 1919, and is 300 feet long, 66 feet wide and has a depth of 20 feet. Considered a phenomenon, it was once featured in the newspaper series “Ripley’s Believe It or Not.”

The bridge had actually been below river water level, but was being supported by the water, which had been atmospherically forced underneath it. Highway reconstruction has since removed this novel feature.





Woodstar Beach Campground

facilitates 48 RV and tent sites along a quarter mile of Beautiful Lake Michigan beach frontage, each site has its own fire ring, picnic table, water and electricity. The facility also provides dump station, and fresh water. We provide a relaxed atmosphere, wooded lots, sandy beaches and plenty of fresh air to enjoy your valued time. We take pride in our campground and hope to host for years to come.

For an idea of what our campground provides, visit www.woodstarbeach.com

**Woodstar Beach Campground
Manistique**

For booking, please call
906-450-5828






**Get your Fill
of the Fun this Summer
at the Fair!**

**Michigan’s Oldest
State Fair!**

August 15-21, 2022

THE 2022 UP STATE FAIR
A CELEBRATION OF AGRICULTURE AND COMMUNITY

DID YOU KNOW?

The Pure Michigan Byway

US-2 was designated a Pure Michigan Byway in a ceremony on Oct 6, 2017 in Naubinway, Mich. The US-2 Top of the Lake Byway runs 85 miles from St. Ignace to Manistique, along the picturesque northern shoreline of Lake Michigan. It was chosen for the designation based on its outstanding scenic qualities.

The US-2 Top of the Lake Byway is one of only 21 Pure Michigan Byways in the state.



Above, the road sign indicating a Pure Michigan Byway is shown.



KRUSIN KLASSEKS FUN RUN

at the U.P. State Fairgrounds
\$5 entry button

JUNE 3RD & 4TH 2022

<p>Friday, June 3rd Parade in Downtown Escanaba @ 7pm</p> <p>Dance 8pm-Midnight @ Fairgrounds Entertainment by Grand Design Band!</p>	<p>Saturday, June 4th Gates open @ 8am</p> <p>Car Show & Swap Meet</p> <p>Trophies & Awards Starting at 4:30pm in Grandstand</p>
--	---

krusinklassics.net

MANISTIQUE CHURCHES

Zion Lutheran Church

435 Oak St.
(906) 341-5427

St. Martin's Lutheran Church (WELS)

401 Deer Street, Habitat Blanchard Center
(906) 341-1554

St. Francis de Sales Catholic Church

330 Oak. St.
(906) 341-5355

St. Albans Episcopal Church

301 Range St.
(906) 341-5121

Seventh Day Adventist Church

809N Duck Inn Road
(906) 341-1844

Manistique Harbor Pentecostal Church of God

813 Arbutus Ave.
(906) 286-9433

Manistique Bible Church

(906) 341-2100

Jehovah's Witness Kingdom Hall

851 Garden Ave.
(906) 341-8214

Hiawatha Country Church (Foursquare Gospel)

M-94, North of Manistique
(906) 341-6090

First United Methodist Church

190 North Cedar
(906) 341-6662

First Baptist Church, ABC-USA

315 Walnut Street
(906) 341-2814

Church of the Redeemer Presbyterian, PCUSA

314 Main St.
(906) 341-5753

Church of Jesus Christ of Latter-Day Saints

208 South Cedar Street
(906) 341-1918

Cedar Grove Mennonite Church

1275W Kendall Rd.
(906) 341-3435

Bethel Baptist Church

118 E. Elk Street
(906) 341-5561

Church information from
www.cityofmanistique.org

St. Francis de Sales Catholic Parish

A Welcoming Community

~ MASS TIMES ~

• St. Francis de Sales – Manistique

330 Oak St., Manistique MI • 906-341-5355

Saturday 4:00pm

Sunday 9:30am

Tues, Wed, Thurs, & Fri. 10:00am

• Divine Infant of Prague – Gulliver

Highway US-2, Gulliver, MI • 906-341-5355

Sunday 11:30am



Marketing & Advertising Consultant

- Over a decade of experience helping local businesses succeed
- Client partnerships in restaurant, retail and service industries
- Print, digital and social media strategies to maximize your audience reach
- A proven track record and reputation for results
- We have the local market knowledge and experience to maximize audience reach and consumer engagement, building your brand awareness and bottom line.

1. We are a trusted information source.

People turn to us for more than just local news. They turn to us to find out what's on sale, where to shop and dine, and who to call.

2. We are local, serving this community since 1909.

As a trusted partner in the community, we are invested in helping local businesses succeed. After all, we live and work here too!

3. We integrate print, digital and social media advertising.

We make sure your message is seen wherever today's customers look. From niche special section advertising to web and mobile engagement, our comprehensive multimedia approach gives you maximum exposure to new and returning customers.

4. We get results.

Our personalized sales and marketing campaigns strategically target your immediate objectives and long-term goals as a business, delivering you advertising to more than 14,000 Readers in print alone per day!

DAILY PRESS

Advertising Sales Team
906.786.2021

Join us!

Bethel Baptist Church

118 E. Elk Street Manistique, MI 49854

Sundays 9am, 10am, & 6pm

Wednesdays 7pm



Home of

Bethel Baptist Christian School

Kindergarten-12th grade
individualized and student centered

*for more information about the church
or school call **906.341.5561***



First United Methodist Church of Manistique



Worship services
are held each week
on Sunday morning
at 11:00 AM.



We don't have any annual events scheduled for this coming year, but we are on YouTube for our worship services : "Manistique Methodist"



In the 1940s, we received our pump organ from the Munising Methodist Church and it has been used for our worship services since then.



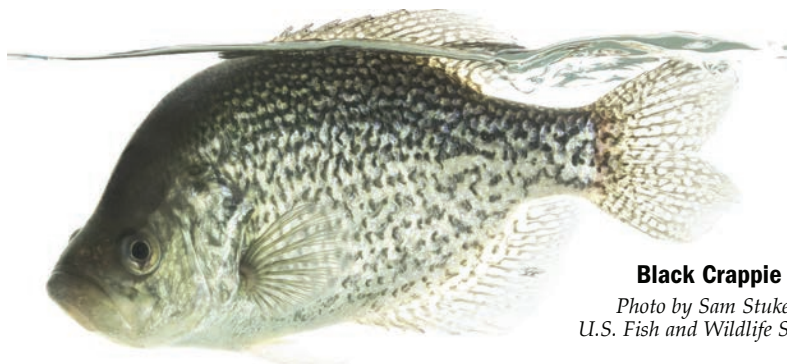
Musical accompaniment for hymns is provided by our church organist on a Baldwin 632 organ. We also have an upright piano for choir hymns.



190 N. Cedar Street Manistique, MI 49854
906-341-6662 www.manistiquemethodist.org

Hooked on a Good Time

GONE FISHIN'



Black Crappie

*Photo by Sam Stukel,
U.S. Fish and Wildlife Service*

On the following pages, you will find the names of some of the Upper Peninsula's best fishing spots. Bodies of water marked with an asterisk are sub-

ject to wilderness regulations. Check a current Michigan Department of Natural Resources fishing guide for more information.



Brazda's

Heating Refrigeration

RESIDENTIAL • COMMERCIAL • INDUSTRIAL

"WE SERVICE ALL BRANDS"



Carrier
turn to the experts™

- ★ Heating
- ★ Air Conditioning
- ★ Refrigeration
- ★ Ductwork
- ★ Ice Machines
- ★ Restaurant Equipment
- ★ Fire Places



REGENCY
FIREPLACE PRODUCTS

906-341-2279

183 River Street, Manistique, MI

8am - 5 pm Monday thru Friday

★ 24 - HOUR SERVICE ★



Northern Pike

Photo by Ryan Hagerty, U.S. Fish and Wildlife Service

Warm Water Fishing

Big Bass Lake – 293 acres. Large mouth bass, northern pike, bluegill, yellow perch.

Beaton Lake – 46 acres. Large mouth bass, small mouth bass, pumpkinseed sunfish.

Big Island Lake – 130 acres. Large mouth bass, northern pike, muskellunge,

bluegill.

Blue Joe Lake – 30 acres. Small mouth bass, bluegill.

Boot Lake – 121 acres. Walleye, northern pike, large mouth bass, bluegill.

Byers Lake – 149 acres. Northern pike, large mouth bass, bluegill, brown bullhead.

Continued on page 32

**Proud to Be A
Community Partner
& Employer**

**Thanks for your support, hard
work and trust, Manistique!**

We look forward to continuing to
make our company a great place to
work and do business.

402 West Elk Street, Manistique, Michigan
906-286-4265

FULL MENU

Serving A Wide Variety of Delicious
**APPETIZERS, SOUPS &
SALADS, SANDWICHES,
PASTAS, ENTREES, &
PIZZA!**

**21 MICHIGAN
CRAFT BEERS
ON TAP!**

Kitchen Open Daily from
11am til 9pm
Memorial Day - Labor Day
11am til 10pm
CARRY OUTS AVAILABLE

**242 S Cedar St
Manistique, Michigan
Call (906) 286-4455**

TAP21

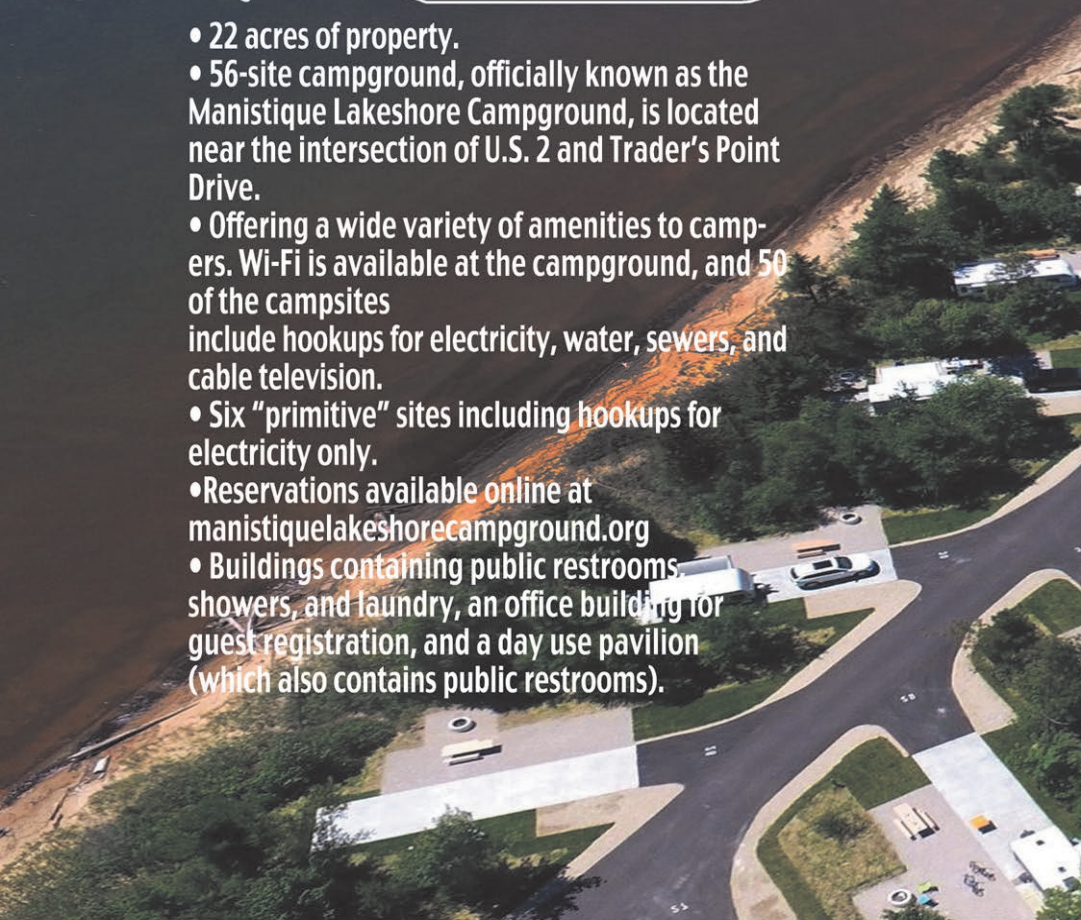
Manistique Lakeshore Campg



City of
Manistique



- 22 acres of property.
- 56-site campground, officially known as the Manistique Lakeshore Campground, is located near the intersection of U.S. 2 and Trader's Point Drive.
- Offering a wide variety of amenities to campers. Wi-Fi is available at the campground, and 50 of the campsites include hookups for electricity, water, sewers, and cable television.
- Six "primitive" sites including hookups for electricity only.
- Reservations available online at manistiquelakeshorecampground.org
- Buildings containing public restrooms, showers, and laundry, an office building for guest registration, and a day use pavilion (which also contains public restrooms).



ground.org





Yellow Perch

Photo by Brett Billings, U.S. Fish and Wildlife Service

Continued from page 29

Clear Lake – 109 acres. Large mouth bass, small mouth bass, yellow perch.

Coattail Lake* – 53 acres. Northern pike, large mouth bass, pumpkinseed sunfish, brown bullhead.

Colwell Lake – 158 acres. Large mouth bass, northern pike, black crappie, bluegill.

Cookson Lake – 35 acres. Large mouth bass, northern pike, bluegill.

Crooked Lake – 190 acres. Large mouth bass, northern pike, black crappie, bluegill, pumpkinseed sunfish.

East Lake – 54 acres. Large mouth bass, pumpkinseed sunfish, yellow perch, brown

Continued on page 34



US2 Cooks, MI
906.644.2317

Where Will Your Next Adventure Land You?

The Friends of Indian Lake State Park Committee invite you to enjoy your vacation with us by visiting or camping on beautiful Indian Lake. Available in the park you will find two shelters that were constructed by the Civilian Conservation Corp in the 30's and are available to rent for family activities. A large picnic area is also featured with an inviting family friendly beach.

The friends group sponsors several activities and programs that are for all ages to enjoy. The friends group also offer for rent aluminum row boats, canoes and kayaks.

If you are interested in becoming a member of the friends group, information is available at the campground office in the park.

Indian Lake State Park

8970 W County Rd. 442

Manistique, MI 49684

(906) 341-2355 Ad sponsored by:

Friends of Indian Lake Committee



MOVING FORWARD

Building Expansion Project | Phase Two

\$12,600,000

PROJECT INCLUDES:

- 30,900 sq ft Expansion & Renovation
- Rehabilitation Center
- Aquatic Therapy Pool
- Chemotherapy Infusion Expansion
- Expanded Rural Health Clinic
- Administrative Building
- HomeCare & Hospice
- Specialty Clinic



OVERVIEW OF OUR BUILDING EXPANSION PROJECT

OUR SERVICES

Hospital Services

- 24-hour Emergency Dept.
- 12 Bed Acute Care Unit
- 2 Operating Rooms
- Outpatient Services
- Cardio-Pulmonary Care
- Health Education & Training
- Laboratory
- Medical Imaging/Radiology
- Medical/Surgical Nursing
- Social Services
- Swing Bed Services

HomeCare & Hospice

- Nursing
- Physical, Speech and Occupational Therapy
- Medical Social Work
- Counseling/Support Groups

Rehabilitation Services

- Physical, Speech and Occupational Therapy
- Aquatic Therapy

Specialty Care Services

- Bariatric Surgery
- Cardiology
- Ear Nose & Throat (ENT)
- General Surgery
- Orthopedics
- Physical Medicine & Rehabilitation
- Surgical Podiatry
- Wound Care Clinic

Rural Health Clinic

- Family Medicine
- Oncology
- Behavioral Health Services
- RediCare Same Day Clinic
- Traveling Specialists
- Telehealth
- Naubinway Satellite Rural Health Clinic
- Commercial Driver's License Physical Exams (CDL)



7870W US Highway 2 · Manistique, MI 49854
906-341-3200 | 888-460-8724

Trust First Choice

OUR VISION

We will be the trusted first choice for our patients, staff, and physicians.

OUR MISSION

To provide quality health and wellness services for the people of our region.

Continued from page 32

bullhead.

Grassy Lake — 176 acres. Large mouth bass, northern pike, muskellunge, bluegill.

Herman Lake — 85 acres. Large mouth bass, northern pike, bluegill, pumpkinseed sunfish.

Hutt Lake — 18 acres. Large mouth bass, bluegill, yellow perch.

Indian Lake — 8,400 acres. Yellow perch, walleye, northern pike, muskellunge, rock bass, small mouth bass, bluegill.

Ironjaw Lake — 51 acres. Large mouth bass, northern pike, black crappie, bluegill.

Klondike Lake* — 39 acres. Large mouth bass, northern pike, yellow perch.

Leg Lake — 40 acres. Northern pike, black crappie, bluegill, pumpkinseed sunfish.

Lily Lake — 144 acres. Northern pike.

Little Bass Lake — 81 acres. Northern pike, bluegill, pumpkinseed sunfish, yellow perch.

McKeever Lake — 132 acres. Muskel-

lunge, northern pike, small mouth bass, rock bass, pumpkinseed sunfish.

Minerva Lake — 45 acres. Large mouth bass, yellow perch.

Muleshoe Lake — 21 acres. Large mouth bass.

Big Murphy Lake — 131 acres. Large mouth bass, northern pike, bluegill, pumpkinseed sunfish, brown bullhead.

Petes Lake — 190 acres. Small mouth bass, walleye, rock bass, yellow perch.

Rumble Lake — 22 acres. Large mouth bass, northern pike, bluegill.

Sand Lake — 106 acres. Mouth bass, northern pike, pumpkinseed sunfish, yellow perch.

Steuben Lake — 150 acres. Walleye, large mouth bass, bluegill, yellow perch.

Swan Lake — 51 acres. Walleye, large mouth bass, bluegill, yellow perch.

Three Island Lake — 31 acres. Large

Continued on page 38

WELCOME TO THE NORTHERNMOST POINT OF LAKE MICHIGAN

GET YOUR PHOTO AT THE TOP OF THE LAKE MARKER AT THE GARFIELD TOWNSHIP MARINA IN NAUBINWAY!

2022 EVENTS

JUNE 26 FIREWORKS GOLF SCRAMBLE

JULY 2-4 JULY 4TH CELEBRATIONS

AUGUST 13 ENGADINE TRACTOR SHOW

SEPTEMBER 17 SNOWMOBILE SWAP MEET

DECEMBER 4 CHRISTMAS BAZAAR

TOPOFTHELAKE.ORG

INFO@TOPOFTHELAKE.ORG

(906) 477-6298

f

Fiber Internet for Rural Homes

Highline is delivering real high speed internet to unserved, under-served, and unhappily served rural residents in Delta County.

We believe that no matter where you choose to live, you should have access to fast, safe, and reliable internet.

Whether you're a student, parent, work from home professional, gamer, or just want to enjoy a movie marathon night, Highline will be there to deliver the highest speeds available.

Find out more! Visit highlinefast.com, call 1-888-212-0054, or sign up at highlinefast.com/signup



Visit. Manistique

Manistique Lodging Guide

<i>MOTEL NAME</i>	<i>ADDRESS</i>	<i>PHONE #</i>
Budget Host Inn	6031 W U.S. Hwy 2	906-341-2552
Colonial Motel	617 E. Lakeshore Drive	906-341-6656
Comfort Inn	726 E. Lakeshore Drive	906-341-6981
Econo Lodge Lakeshore	1101 E. Lakeshore Drive	906-341-6014
Gray Wolf Lodge	6770 W U.S. Hwy 2	906-341-2410
Harbor Motel	311 South Cedar	906-341-5191
Holiday Motel	5939 W U.S. Hwy 2	906-341-2710
Northshore Motel	801 E. Lakeshore Drive	906-341-4151
Quality Inn	905 E. Lakeshore Drive	906-341-3777
Star Motel	1142 E. Lakeshore Drive	906-341-5363

[www](http://www.manistique.com)

ue...

NUMBER OF UNITS	SNOWMOBILE TRAIL ACCESS	WIRELESS INTERNET	HIGH-SPEED INTERNET	CABLE TV	MEETING ROOMS	INDOOR POOL	WHIRLPOOL	IN-ROOM SPAS	PRIVATE BEACH	PETS ALLOWED	BEACH ACCESS	VIEW OF LAKE	CASINO SHUTTLE	COFFEE IN ROOM	CONTINENTAL BREAKFAST	IN-ROOM MICROWAVE/ REFRIGERATOR
26	•	•	•	•				•					•		•	•
22		•	•	•						•			•			•
57	•	•	•	•	•			•		•	•		•		•	•
32	•	•	•	•				•			•		•	•	•	•
40	•	•	•	•		•	•	•	•	•	•	•	•	•		•
16	•	•	•	•						•			•	•		•
20	•	•	•	•						•			•		•	•
12	•	•	•	•						•		•	•			•
55	•	•	•	•	•			•		•			•	•	•	•
20	•	•	•	•					•	•		•	•		•	•

www.visitmanistique.com

Continued from page 34

mouth bass, northern pike, black crappie, bluegill, pumpkinseed sunfish.

Thunder Lake – 361 acres. Walleye, large mouth bass, northern pike, bluegill, pumpkinseed sunfish, yellow perch, brown bullhead.

Toms Lake – 23 acres. Large mouth bass, bluegill.

Townline Lake – 82 acres. Large mouth bass, northern pike, bluegill.

Triangle Lake – 169 acres. Large mouth bass, small mouth bass, northern pike, bluegill, pumpkinseed sunfish.

Vance Lake – 25 acres. Large mouth bass, northern pike, yellow perch.

Verdant – 25 acres. Large mouth bass, northern pike, black crappie, bluegill.

Wedge Lake – 25 acres. Large mouth bass, bluegill.



Rainbow Trout

Photo by Ryan Hagerty, U.S. Fish and Wildlife Service

Trout Lakes, Rivers and Streams

Banana Lake – Rainbow.

Lake Nineteen – Rainbow.

Neds Lake – Brook.

Twilight Lake – Brook.

Indian River – Brook, brown.

Big Murphy Creek – Brook, brown.

Little Murphy Creek – Brook.

Little Indian River – Brook.

Stutts Creek – Brook (all branches).

Adventure. Sights. Fun. We've Got It All!

**BUY
TICKETS
ONLINE**

25 Miles of Pictured Rocks!

906-387-8888 | RiptideRide.com

📍 MARQUETTE, MICHIGAN

#REMARKABLE

**TRAVEL
MARQUETTE**
MAKE YOUR MARQ
TRAVELMARQUETTE.COM

Feature

NORTHWOODS RESORT



A cozy spot by the lake at Northwoods Resort

While Northwoods Resort can trace its history back to the late 1920s, the resort has been family owned since 1970. Open year-round, Northwoods Resort offers a wide variety of outdoor activities — from kayaking in the summer to snowmobiling in the winter.

Located on Lake Au Train, the beachside campground is only 18.8 miles from Pictured Rocks and two miles from Lake Superior, making it the perfect place to stay while enjoying everything the area has to offer.

Northwoods Resort boasts more than 28 newly-remodeled cabins, cottages, vacation homes and yurts. Each cabin is equipped with a TV and has a fully stocked kitchen. Many also have gas fireplaces and — with the exception of the yurt — all have at least one full bathroom. Cabins range in size from cozy one-bedroom to spacious five-bedroom, with

beds ranging in size from twin to king. All of the cabins are equipped with Wi-Fi.

During their stay, guests can rent a kayak, canoe or boat. A basketball court is also available during the day if guests want to shoot some hoops.

For nature lovers, the possibilities are endless. Many guests of the resort enjoy fishing, swimming and hiking in the warmer months. In the winter, snowmobiling, snowshoeing

and cross country skiing are popular.

For more information about Northwoods Resort, visit www.northwoodsresort.net, find “Northwoods Resort” on Facebook or “northwoodsresortautrain” on Instagram, or call 906-892-8114 for booking information.

Northwoods Resort is located at:
N7070 Au Train Forest Lake Rd,
Au Train, MI 49806



Kayaking on Lake Au Train

Find a New Adventure

NEARBY ATTRACTIONS

Shipwreck Tours of Lake Superior

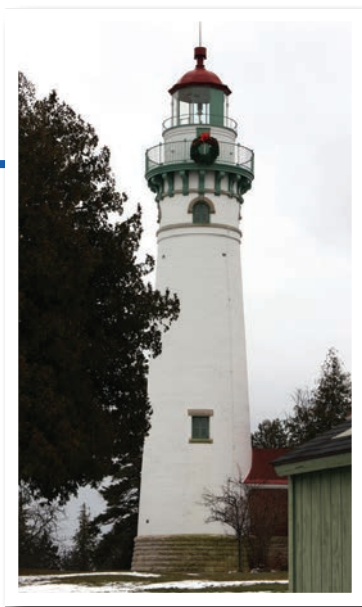
Explore Lake Superior's shipwrecks either by diving or viewing through the floor of a glass bottom boat. The trip takes about two hours, visits two different shipwreck sites, rock cliffs and caves, a historic lighthouse, and the exquisite beauty of Grand Island and Munising Bay. It allows a firsthand view of wrecks including a rare, fully intact, wooden sailing ship that was built before the Civil War and sits only a few feet from the surface of the lake.

For more information, visit www.shipwrecktours.com or call (906) 387-4477 for departure times and reservations.

Seul Choix

The Seul Choix Point Lighthouse, pronounced "Sis-shwa" is located on US-2, 12 miles east of Manistique, and was once the center of a thriving fishing community. Seul Choix, French for "only choice" is a Michigan Historic Site and a Michigan Historic Site National Historic Landmark. The lighthouse has a rich history, and some even claim it is haunted. Visitors and workers have reported strange happenings, including the sound of someone (an old lighthouse keeper, perhaps?) climbing the steps.

The complex includes a two-story home, restored and decorated, and several outbuildings. There is also a maritime museum with a dugout canoe – one of the rarest finds to be uncovered in the Midwest. The lighthouse is operated by the Gulliver Historical Society in cooperation with the DNR and is open



Seul Choix Lighthouse



At Woodland Assisted Living & Continuing Care Community, our goal is to not only provide quality care, but to keep our residents active and engaged, nurturing body, heart, soul, and mind.

609N Intake Park Road Manistique, MI
906.341.4421

www.woodlandcontinuingcare.com

Continued on page 42

Continued from page 41

Memorial Day through mid-October from 10 a.m. to 6 p.m., seven days a week.

Call (906) 283-3183. (Directions: From the junction of US-2 and County Road 432 in Gulliver, go south on County Road 432 (Point Inland Road) about 4 miles to gravel road/County Road 431. Turn right (west) onto County Road 431 and go about 4 miles to the lighthouse.)

Fayette

Fayette, on the Garden Peninsula, is all about history.

About 500 people lived in Fayette while smelting iron for the Jackson Iron Company from 1867 to 1891.

Many displays are open and others are constantly being updated. One of the displays is a laborer's cabin, which is the only completely rebuilt structure in the town that features an opera house, hotel, charcoal and lime

kilns, furnace complex, grain elevator site and homes. The old kiln site is an excellent location for taking photographs, including old-time wedding scenes.

"It is one of the premier company towns (in the country) we still have left," said park supervisor Randy Brown. "This is one of the best portrayed of those kind of towns."

Twenty restored buildings highlight an easy walking tour of this Michigan Historical Museum field site located in a state park, which is 17 miles south on M-183 from Garden Corners on US-2.

Approximately five miles of hiking trails — also available for cross country skiing in the winter — wind throughout the historic site and through a hardwood forest providing fantastic glimpses of adjoining Snail Shell Harbor or Big Bay de Noc.

Another highlight is hiking atop the Fayette bluff for a scintillating view of the harbor and townsite. The blue water and sky and the white limestone cliffs also provide excellent photo opportunities. Snail Shell Harbor is an enticing



SINETECH LLC



*SineTech is a service provider of premier, business-class technical systems
in Michigan's beautiful Upper Peninsula.*

323 Deer St. | Manistique, MI 49854 | 906-341-0018

SineTech provides the services that individuals and small businesses need most, including:

- **COMPUTER SALES & SERVICE**
- **COMPUTER REPAIRS & UPGRADES**
- **NETWORKING**
- **TELEPHONE SYSTEMS**
- **VIDEO SURVEILLANCE & SECURITY**
- **ACCESS CONTROL SYSTEMS**

**We offer Long-range
Wi-Fi - great for
campgrounds, golf
courses, resorts,
campuses, & more!**

Follow us [f](#) [@](#) [@SineTechUSA](#) info@sinetechusa.com www.sinetechusa.com

Store Hours: Mon 10-4 | Tues & Wed 9-5 | Thurs, Fri, Sat 10-4



Fayette Historic State Park

venue for rafting or kayaking. Scuba diving is also available, but only through a permit obtained at the park office. Several old artifacts may be viewed on the harbor bottom under proper conditions.

For details, call the park office 906-644-2603.

Indian Lake Golf Course

Indian Lake Golf Course has a full 18 holes of golf to offer. Its beautiful location overlooking Indian Lake is an added treat for golfers enjoying its superbly conditioned

fairways and greens.

The golf club is open to the public. Call ahead for tee times at 906-341-5600.

Bishop Baraga Shrine

Frederic Baraga (1797 - 1868), also called the “Snowshoe Priest,” left his comfortable home in Slovenia in 1832 to begin his missionary work in the Great Lakes region. On May 15, 1932, the Reverend Frederic Baraga blessed his first church on Indian Lake. It was built with

Continued on page 44

PLATINUM HOSPITALITY





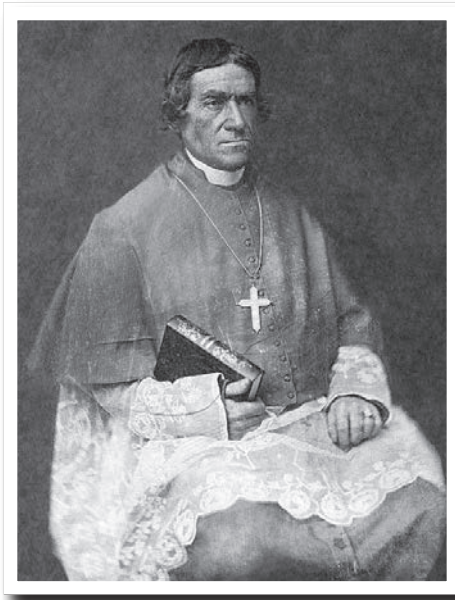
- Business Center
- Cable/Satellite TV
- Refrigerator
- Exercise Room
- Free Newspaper
- Free Continental Breakfast
- Handicap Rooms
- Hiking/nature Area
- Located near Boardwalk

www.econolodgetakeshore.com
info@econolodgetakeshore.com

Call for Reservations **906.341.6014** 1101 East Lakeshore Dr., Manistique



BY CHOICE HOTELS



Bishop Frederic Baraga

United States Library of Congress

Continued from page 43

the enthusiastic help of the local Chippewa Indians and dedicated “To the honor of God under the name and patronage of His Virginal Mother Mary.”

The restored site includes the chapel, where occasionally an outdoor Catholic Mass is held, several Native American dwellings, and an old Native American cemetery.

End of the Road Winery

Owned by Jim and Robin Barker, End of the Road Winery offers tastings and sales. Named for its location at the end of a road, the winery is located at 6917 Burns Rd., Germfask.

Call 906-450-1541 or 906-450-1549 or more information, or visit www.endoftheroadwinerymi.com.

The Place for Unique Gifts

Lake Effect Art Gallery

Featuring Original Art from Upper Peninsula Artists

*Pottery, Jewelry, Photography, Paintings, Baskets,
Woodwork, Fiber Art, and so much more!*

Open Monday thru Saturday beginning Memorial Day Weekend

Closed for the Winter

Check website for hours - LakeEffectArtGallery.com

244 South Cedar Street in Downtown Manistique
906-341-3411



Lake Effect Community Arts

This is where you can connect with others who share similar interests, and where wonderful things happen when you join in and allow the creativity to flow.

We encourage participation in the Arts by sponsoring classes, workshops, exhibits, and public performances.

Check our website for a current schedule of events
LakeEffectArts.org



Feature

TOP OF THE LAKE COMMUNITIES ASSOCIATION



Monument marking the northern-most point of Lake Michigan

There's something special about the northernmost edge of Lake Michigan's shore and the Top of the Lake Communities Association is out to share that specialness with the world.

A nonprofit organization run by volunteers and supported by member businesses, individuals and civic groups across the lake's northern edge, the TOLCA promotes and encourages involvement in activities and events that support the local economy and quality of life in the area stretching across Garfield, Hendricks, Hudson and Newton Townships and including Engadine, Epoufette, Gould City, Naubinway and Rexton.

The group hosts annual events, supports community programs and invests in projects that benefit the area. Through these actions, the group encourages business development and fosters hospitality — both towards residents and visitors — and is actively involved

in the civic, social and moral welfare of the communities.

The TOLCA meets the first Monday of the month at the Top of the Lake Snowmobile Museum in Naubinway. Businesses and individuals who live in the TOLCA area are encouraged to consider becoming members and to volunteer with the group to better the area.

For more information about the TOLCA, visit topofthelake.org, email info@topofthelake.org, or find the group on facebook at www.facebook.com/TopoftheLakeCommunitiesAssociation.

The Top of the Lake Snowmobile Museum, where meetings are held, is located on the north side of US 2, downtown Naubinway, W11660 US 2, Naubinway, MI 49762. Correspondence by mail can be sent to TOLCA, P.O. Box 132, Naubinway, MI 49762.

Make Manistig Your Hub!



Lake Superior

**RIP TIDE
RIDES**

**PICTURED
ROCKS**

**SHIPWRECK
TOURS**

**MANISTIG
LAKES**

**BIG
SPRINGS
(KITCH-ITI-KIPI)**

**SENEY
WILDLIFE
REFUGE**

**INDIAN
LAKE**

City of
MANISTIG

**SEUL CHOIX
POINT
LIGHTHOUSE**

**THOMPSON
FISH HATCHERY**

**FAYETTE
STATE PARK**

Lake Michigan

BEAVER ISLAND

ue



**TAHUAMENON
FALLS BOAT &
TRAIN TOURS**



**SOO
LOCKS**



**OSWALD'S
BEAR RANCH**



**GARLYN
ZOO**



**MACKINAC
BRIDGE**

**Mackinac
Island**

Lake Michigan

Lake Superior

Whitefish Bay

CHIPPEWA

MACKINAC

EMMET

STIQUE

Newberry

123

28

123

H 40

2

Brevort

Pt Aux Chenes

St. Ignace

Garden I

Hat I

Hog I

Shoe I

St. James

Straits of Mackinac

Cecil Bay

Sturgeon Bay

Wynnow Lake

Larks L

Mindle R

Wynnow Lake

Wynnow L

Douglas R

Riggsville

Lake Paradise

Wynnow L

Douglas R

Sault Ste. Marie

Long I

Bois Blanc Island

Pt Nipigon

Cheboygan

Lake Sixteen

Port St. Ignace

Town

BEAVER ISLAND BOAT COMPANY

Home Away From Home

THE CITY OF MANISTIQUE



Manistique's Independence Day Parade

The historic city of Manistique is the commercial hub of Schoolcraft County and is home to the picturesque Manistique Marina, which offers transient slips and broadside docking, as well as seasonal slips and ideal fishing opportunities. For those looking for a scenic walk, a 1.43-mile long boardwalk runs

along the Lake Michigan shoreline from the marina, past the East Breakwater Lighthouse, and on, east for about a mile. It's an easy walk — level and smooth, and offers plenty of sights. The marina is open from Memorial

Continued on page 50



STATE SAVINGS BANK
Over 100 Years of Serving Our Community.



WWW.STATESAVINGSBANK.COM



**WE OFFER TIRE REPAIR.
GIVE US A CALL OR STOP IN TODAY!**

U.P. Tire & Auto Service

11798W US Hwy 2, Cooks, MI
906-644-2540

1 Soul Choix Point Light

2 Seney National Wildlife Refuge

3 Cobwell Lake Pathway

4 Pine Marten Run

5 Ashford Lake Pathway

6 Rainey Wildlife Area

7 Bishop Baraga Shrine

8 Indian Lake State Park

9 Big Springs - Paine Book State Park

10 Fayette Historic State Park

11 Thompson Historical Site

12 Thompson State Fish Hatchery

13 Manistique Steamboat Light

14 Manistique Museum / Water tower / Spilon Bridge

15 Manistique Central Park

16 Schoolcraft County Environmental Lab

Top of the Lake CIRCLE TOUR™



LAKE MICHIGAN

MANISTIQUE

INDIAN LAKE

SENEY NATIONAL
WILDLIFE REFUGE





Manistique East Breakwater Lighthouse

Matthew Trump photo

Continued from page 48

Day weekend through Labor Day weekend. Not far from the marina is Manistique’s charming downtown area which offers plenty of shopping and dining opportunities.

Nearby Central Park provides 40-acres of recreational space. It is located on N. Maple St., next to Little Bear West Arena in Manistique. This park, which features a crystal clear pond for swimming and fishing as well as other recreational opportunities, is an excellent place to spend a summer day.

The Schoolcraft County Historical Park, located in Manistique’s central district is

another highlight of the community. The park boasts the city’s historic water tower and a log cabin that was once home to early residents of the county.

For those who may be looking for a taste of Las Vegas, the Kewadin Casino offers a variety of on-site amenities, entertainment venues, dining options, convention facilities, and exciting Las Vegas-style gaming action, including slots and your favorite table games, like Poker, Keno, Craps, Blackjack, Let it Ride, and Roulette. It is located on US-2, approximately two miles east of Manistique, and is open 24 hours, seven days a week. Free shuttle service is available by calling 906-341-5510.



Zephyr[®] FUEL

- Liquor • Gasoline

We fill Propane & Offer RV Refills - Call ahead for RV's

100 Chippewa Ave.
Manistique, MI 49854
906-341-5152



Nicolet
NATIONAL BANK
Real People. Real Conversations.

130 S Cedar Street
Manistique, MI 49854
906.341.8401

NicoletBank.com | Member FDIC

More than 50 years of fun

THE HAYWIRE GRADE



The Haywire Grade

Michigan DNR photo

By Doug Donnelly

Michigan Department of Natural Resources

Michigan's first rail trail turned 50 years old in 2020.

Some residents who live near the Haywire Grade, a multi-use trail that crosses the Upper Peninsula north to south from Shingleton to Manistique, are glad the trail is getting the recognition it deserves.

"I'd say over the past four years, Michigan has truly started to recognize the significance of the Haywire," said Gerry Reese, who has owned property near the trail for nearly 30 years and is a part of the Schoolcraft County Motorized Trail Association, during the trail's golden anniversary celebration.

The yearlong celebration of the Haywire

Grade kicked off in February 2020. While the COVID-19 pandemic limited the celebration of the trail's history, it's still something to be celebrated.

"There are still some residents in the area who are unaware of the trail's rich history. We want to change that," said Reese.

History

With more than 2,600 miles logged, Michigan has converted more miles of abandoned railroad corridor into trails than any other state. This conversion is done through a process called rail banking. The trails, some paved and some not, are used for recreation

Continued on page 52



Schoolcraft County Motorized Trail Association members attach a celebration banner between trail groomers

Michigan DNR photo

Continued from page 51

purposes, but may be recalled to railroad service and the recreation trails rerouted should

the need arise.

The first rail-trail in Michigan was the Haywire Grade in Schoolcraft and Alger counties.

Established in 1970, two years after the

GARLYN ZOO
 Experience the Wild!
 See Feed and Enjoy
 Native and Exotic
 Animals up close

www.garlynzoo.com
 906-477-1085

40 minutes west of the Mackinac Bridge on US-2, Naubinway

Find us on Facebook
 facebook/garlynzoo



Open and ready for riders, the Haywire Grade during winter is shown.

Michigan DNR photo

Manistique and Lake Superior Railroad ceased operation, the Haywire Grade runs 32 miles. Originally planned for seasonal snowmobile use, the Haywire has since become a popular year-round multi-use trail.

“People have long used the trail for a variety of activities,” Reese said. “It was very common to see an equestrian rider, and at the same time someone walking. It’s truly a multi-use trail.”

The trail’s historical significance dates to the late 1800s. The Manistique and North-western Railroad began operation in 1898 and reorganized as the Manistique and Lake Superior in 1909.

The railroad served the logging industry and fostered settlement in the region. Many of the trees harvested from the area were sent to Illinois to help rebuild after the Great Chicago Fire.

Interpretation

Stories like this are permanently

Continued on page 54

PATHWAYS TO EMPLOYMENT

**FLEXIBLE
OPTIONS TO
MEET YOUR
NEEDS!**



- Fast track career certificates
- Trades training
 - Industry certifications
 - Degrees
- Transfer programs
 - 100s of online courses
- 2 campus locations



www.baycollege.edu



Participants arriving at the Haywire Grade 50th anniversary snowmobile ride, Feb. 29, 2020.

Michigan DNR photo

Continued from page 55

memorialized through a series of 11 historical interpretive kiosks installed along the trail during the golden anniversary celebration.

The kiosks themselves are part of that history, as they were fabricated with steel from Upper Peninsula railroad tracks and cedar logs grown in the region. Each kiosk also contains metal art depicting a train engine and Manistique and Lake Superior railroad cars.

“We designed the kiosks to have that rustic flavor, but also the railroad and the logging

camp flavor,” Reese said.

As Michigan’s heritage trail coordinator, Dan Spegel works on projects like this one to help shed light on some amazing history around Michigan’s 13,000 miles of state-designated trails.

Since 2015, the Michigan Department of Natural Resources’ Michigan History Center has helped communities around the state create a deeper sense and experience of “place” for trail users through its Heritage Trails Program.

“Heritage trails connect people with the natural and cultural heritage of the landscape they are passing through,” Spegel said.

**Plumbing / Appliances / Furnaces
Fireplaces / Boilers / Cabinetry**

*Paul's
Plumbing &
Appliance, Inc.*



Plumbing • Appliances • Furnaces • Fireplaces

906-341-5536
or toll free in the UP (800) 618-6764
Visit us at uppaulsplumbing.com

152 River Street - Manistique
Hrs: M-F 8am-4:30pm | 24/7/365 Emergency Services



Top of the Lake Snowmobile Museum

www.snowmobilemuseum.com
info@snowmobilemuseum.com

East Hwy US 2 - Upper Peninsula, MI

Open All Year 9-5pm
7 Days a Week
W11660 US 2
Naubinway, MI 49762
906-477-6298



“Where the History of Snowmobiling Comes to Life”

Pure Michigan

In February 2020, the Haywire Grade reached another significant milestone when it was designated one of three new Pure Michigan Trails.

According to Pure Michigan officials, designated Pure Michigan Trails provide access to national, state or regional scenic resources of high quality and splendor, and articulate the natural essence of Michigan.

“Michigan is known for having thousands of miles of hiking, biking and kayaking trails, but the trails and communities that receive this designation are truly outstanding and embody what Pure Michigan is all about,” said David Lorenz, vice president of Travel Michigan. “We are pleased to partner with the Michigan Department of Natural Resources to honor these trails and trail towns.”

To qualify as one of the trails, routes may be a single trail or combination of trails and must be more than a mile in length, open to the public and substantially completed.

The trails and towns receiving Pure Michigan designations comprise some of the elite Michigan trail experiences. They promote healthy lifestyles, conserve natural and cultural resources in the area, display iconic signage, increase awareness of trails for tourism and provide a catalyst for economic activity in their associated communities.

Those qualities, officials say, fit the Haywire Grade perfectly.

Reese said the Pure Michigan designation and recognition the Haywire Grade is receiving are great for the region and the state.

“It’s exciting for everybody,” he said. “This has been building momentum for years.”



Logos commemorating the Haywire Grade’s 50th anniversary celebration and those of partner organizations adorn mile markers along the grade.

Michigan DNR photo

Tahquamenon Falls Brewery & Pub at CAMP 33

Enjoy Fine Dining, Handcrafted Beer & Root Beer, Fine Gifts & Native American

OPEN ALL YEAR
(Except April & November)

OPEN 10:30AM Daily
Serving Food 11AM -8:30PM
(906) 429-3300

Located within the Upper Tahquamenon Falls Park on M-123, 23 miles North of Newberry, 14 miles South of Paradise

Two great state parks

INDIAN LAKE AND PALMS BOOK



Campers at Indian Lake State Park have a fantastic view of this shallow lake, the fourth-largest in the region.

Michigan DNR photo

By John Pepin

Michigan Department of Natural Resources

In southern Schoolcraft County lie two fantastic Michigan state parks, each situated along the shores of the Upper Peninsula's fourth-largest lake - the 8,400-acre Indian Lake, which is located north of Thompson and west of Manistique.

Indian Lake State Park - which is divided into a south and a west unit - offers a total of

217 campsites. Palms Book State Park, located 15 minutes away, along the northwest corner of the lake, is home to Michigan's largest free-flowing spring.

Combined, these two state parks offer visitors beautiful scenery, places for picnicking, camping, ice cream and star gazing, boating, kayaking and fishing, hiking, swimming and beachcombing. Visitors are also well within range for a day trip from here to Fayettee Historic State Park in neighboring Delta County.

*Located on Beautiful
Big Manistique Lake*

**SUNSET POINTE
RESORT**

W16901 Sunset Pointe Drive
P.O. Box 219
Curtis, MI 49820
Cell: 906-458-9531
Phone: (906) 586-9531
www.sunsetpointeresort.com

PARTNERS IN EDUCATION

DSISD
DELTA-SCHOOLCRAFT
INTERMEDIATE SCHOOL DISTRICT
www.DSISD.net

Making a difference in the lives of all
→ Offer Skills → Specialized Service
Career Tech Education - Special Education
Outdoor Education - General Education
Specialized Training - Early Childhood Education
→ Make a Difference

To learn more visit us at: www.dsisd.net

Though large, Indian Lake is shallow with a maximum depth of 18 feet, with almost all the lake measuring 15 feet deep or less. Once referred to as “M’O’Nositique Lake,” Indian Lake measures 6 miles north to south and 3 miles across.

Despite the shallow depth, anglers - especially those with small boats - come here to try to catch some of the nine species available, which range from sturgeon and brown trout to muskies, panfish, walleye and northern pike.

At one time, American Indians lived near the outlet of the lake in log cabins.

Original land for the south-shore unit at Indian Lake State Park was acquired in 1932. Development of the park started a year later with the help of labor provided by the Depression-era saviors from the Civilian Conservation Corps and the Works Progress Administration.

Campsites and other park features were constructed along the lakeshore here.

In 1939, land was acquired for the west-shore unit of the park, though development

didn’t start here until more than two decades later, in 1965. Campsites at the west side of the lake are situated farther back from the water, about a quarter to a half-mile, providing a more secluded atmosphere for camping.

The state park is located 4 miles west of Manistique.

Palms Book State Park is found at the northern end of M-149.

“It is a rewarding side trip for the vacationer touring the Upper Peninsula, for here can be seen one of Michigan’s alluring natural attractions - Kitch-iti-kipi, ‘The Big Spring,’” a park brochure reads.

A raft takes park visitors across the surface of the spring. A viewing well in the watercraft allows views of sand boiling out of the bottom of the spring, the pool cast in an emerald green color due to the minerals present.

“Ancient tree trunks, lime-encrusted branches and fat trout appear suspended in

Continued on page 58



Your Community Health Mart PHARMACY

Caring For You & About You

Putvin Health Mart is a locally owned pharmacy specializing in serving our community with fast, friendly, and professional service, with over 65 years of combined experience!

- Medication Services** such as Prescription Refills, Online Refills, and Transfers and Durable Medical Equipment
- Over the counter items** such as pain medications, cold and allergy, vitamins and supplements, and much more!
- We also have a photo kiosk, gifts, home decor, greeting cards, kid's toys, and special occasion items.

Follow us on Facebook!  PutvinHealthmartMSTQ

211 S Cedar Street, Manistique
Open 7 Days a Week!

www.putvinhealthmart.com
906-341-5494



Celebrating over 50 Years in Manistique

Clyde's
DRIVE-IN RESTAURANT

201 Chippewa Avenue,
Manistique, MI 49854

906-341-6021

Curb Side Service

Home Of The "BIG C" Burger...



Fish at the Big Spring at Kitch-iti-kipi

Photo by "hspauldi"

Continued from page 57

nothingness as they slip through crystal waters far below," a brochure reads. "Clouds of sand kept in constant motion by gushing waters create ever-changing shapes and forms, a challenge to the imagination of young and old alike."

The spring maintains a constant 45-degree water temperature year-round, with more than 10,000 gallons of water per minute gushing from cracks in the underlying limestone.

Early proponent of the spring John I. Bellaire found it as a logging camp dump and persuaded Frank Book of the Palms Book Land Co. in Detroit to sell 90 acres around the spring to



COLEMAN ENGINEERING COMPANY

CIVIL ENGINEERING • ENVIRONMENTAL ENGINEERING
GEOTECHNICAL ENGINEERING • SURVEYING

IRON MOUNTAIN • IRONWOOD • GREEN BAY
www.coleman-engineering.com

CHINESE RESTAURANT

TAKE OUT & EAT IN

CHINA KING



201 SOUTH CEDAR ST.
MANISTIQUE, MI 49854

•CANTONESE •SZECHUAN •HUNAN CUISINE
Tel.: 906-341-8886 | Fax: 906-341-8885

Mon.-Sat. 11:00am-9:00pm
Sun. 3:00pm - 8:00pm



the state for \$10 to preserve the area as part of a state park.

Additional land acquisitions and exchanges brought the park to a total of 308 acres. Work crews constructed the first raft here over the oval-shaped spring.

There is a concessionaire's store at the park, along with swings and grills for picnicking. No camping is permitted here.

Bellaire and an American Indian friend created Indian legends about the spring to attract more visitors to the site he visited almost daily.

In addition to the two state parks in this part of the peninsula, there are other attractions in the area to visit, including the state fish hatchery at Thompson, shoreline boardwalks with a picturesque lighthouse at Manistique, along with more recreational opportunities within the Hiawatha National Forest.

Cool day trips from here include the nature drive and other wildlife viewing opportuni-

ties at the Seney National Wildlife Refuge, history and ghost hunting at the Seul Choix Point Lighthouse, shops and restaurants in Manistique, as well as places to walk along the shell-encrusted beaches of Lake Michigan.

Indian Lake State Park is situated along Schoolcraft County Road 442, not far north of U.S. 2, which winds along Lake Michigan east to the Mackinac Bridge and west and south to Escanaba, Menominee and the Wisconsin border.

Whether you're a camper, a sightseer, a picture taker, painter, stargazer, angler, boater, biker, paddler or hiker, these two beautiful state parks are places that should be experienced - whether for a day, a week or more.

The emerald waters of the big spring await, like the sweeping vistas found across Indian Lake, a place for beautiful sunsets, peaceful contemplation, fun with a fishing rod, a kayak or family and friends.

For more on the Friends of Indian Lake and Palms Book, see page 6.

For more on the Big Spring, see page 63.

Manistique Oil Company



*Proudly Serving the Manistique
Community*

- ✓ Full Service Gas Station
- ✓ Propane available

906-341-2817

216 Deer St., Manistique, MI

CHRISTOPHER'S ANTIQUES



Jewelry • Toys

Clothes • Furniture

Sporting Goods

Tools & Much More!



211 Oak St.,
Manistique, MI
49854

(906) 341-2570

Open
4/1 - 12/31
Mon-Sat
9am-5pm

Feature

SENEY WILDLIFE REFUGE



A rendering of the new facilities planned at Seney Wildlife Refuge

By Ilsa Minor

2022 is a big year for the Seney National Wildlife Refuge.

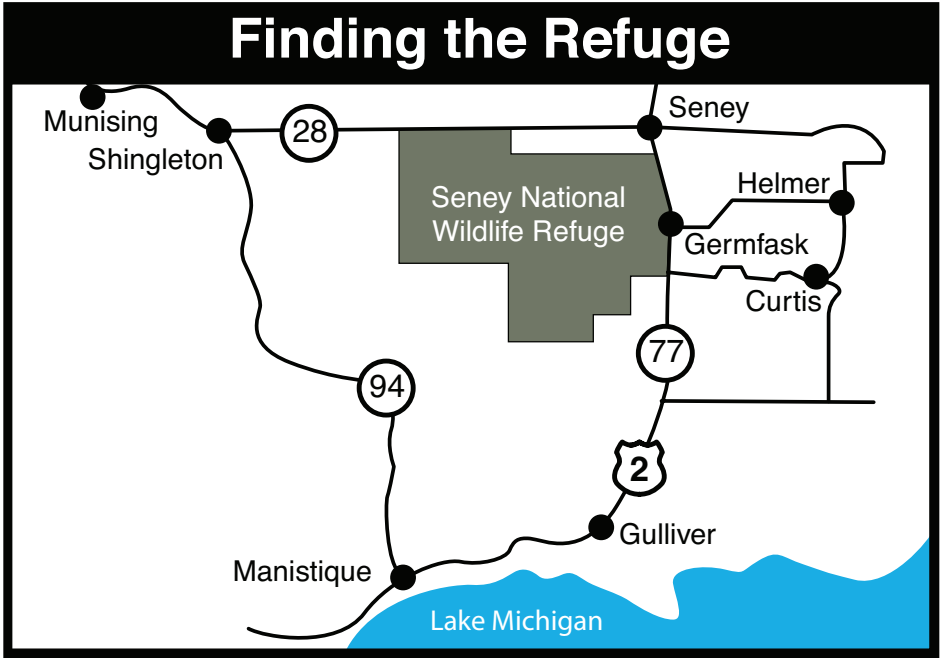
The visitor center at the refuge was closed in 2021 and demolished, along with the office and boat house, earlier this year to make way for new facilities. Construction of a new headquarters building, which will include the refuge office and new visitor center, will begin in 2022. Unfortunately, the upgrades are expected to take several years, but a temporary visitors center will be located off River Road.

The office and visitor center construction project is not the only big change at the refuge this year. Four bridges at the refuge will be repaired on the Marshland Wildlife Drive and Fishing Loop in 2022, Refuge Entrance Road will be resurfaced, and the Pine Ridge Nature Trail will be upgraded. Work on the Pine Ridge Nature Trail will include repair work to earthen dikes and walkways, increasing

wheelchair access opportunities, and repairing bridges and elevated walkways.

Plans to make changes at the Show Pools are also in the works. In the spring of 2018, animal burrowing in the North Show Pool low hazard dam caused the earthen dam to fail and drain most of the water. The South Show Pool was drained to prevent the pool's dam from failing as well, and neither pool has been at full water capacity since. Long-term, the refuge plans to repair the pools and restore the water levels, making the pools fishable once again and restoring wildlife viewing options.

Preparing for the pools to be brought back better than ever will begin with a new wheelchair accessible outhouse that is expected to be installed this summer, replacing the current outhouse at the site. Parking will be redesigned and expanded around the Show Pool Access Site, preventing cars from blocking views of the pools. The expansion will also include an accessible parking space, as well as wheelchair accessible picnic tables and grills.



Seney National Wildlife Refuge is located at:

Seney National Wildlife Refuge Visitor Center, River Road or County Road 436 (2 miles west of M-77) Germfask, MI 49836

Coordinates: 46.21634741621164, -85.9697718525135

Hours:

May 17 to October 20
Open Tuesday to Saturday
From 9 a.m. to 4 p.m.

Phone: Call Sara Giles, visitor services manager, at 906-286-1599 for any questions regarding visiting the refuge or call 906-586-9851 to reach the headquarters' office.

Email: seney@fws.gov

Online: Visit the refuge online at www.fws.gov/refuge/seney or find the refuge on Facebook at facebook.com/seneyrefuge.

Hometown Lending

Products and services tailored to your unique needs:

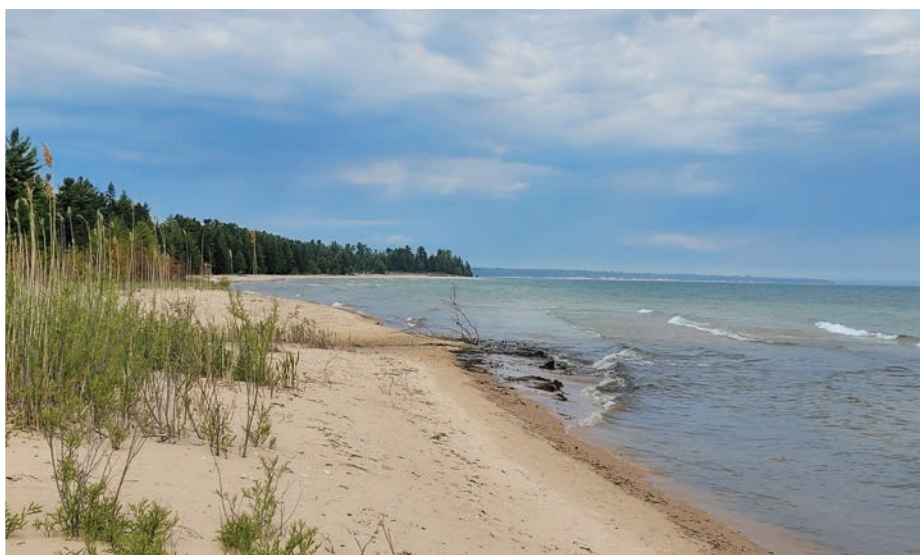
- Recreational land loans
- Construction loans
- Rural mortgages

Contact the local team in Escanaba at 906-786-4487



Feature

WOODSTAR BEACH CAMPGROUND



The beach at Woodstar Beach Campground

Woodstar Beach Campground, located at 1786 S Little Harbor Road, in Thompson, just south of Manistique, will open to guests May 21. Featuring a quarter-mile worth of Lake Michigan water frontage, campsites are located directly on the beach in a sandy, serene, wooded and clean environment.

The campground offers options from RV spots to primitive campsites for all styles of campers. Amenities at the campground include water, fire rings, a playground, electric hookups (30 and 20 amp), showers, laundry and a dump-station.

For more information about the campground or to make a reservation, visit www.woodstarbeach.com or call Joanne Holmes at 906-450-5828 for booking information.



A spot for beach-side campfire

A Rare Sight

THE BIG SPRING



The raft at Palms Book State Park

Photo by Doug Coldwell

By The Michigan DNR

Visitors to Palms Book State Park, located north of Manistique in Schoolcraft County, were been treated in March to an unfamiliar

sight, that of seeing the park’s famous natural spring topped with a cover of ice.

Kitch-iti-kipi, the Big Spring, is Michigan’s

Continued on page 64



drift
alchemy

210 S. Cedar Street
Manistique, MI 49854

@driftalchemy





The Big Spring

Michigan DNR photo

Continued from page 63

largest natural spring. A description of the site was published in newspapers across the state

in April 1929, during the week Palms Book became a state park.

“The ‘Big Spring,’ which received its name from an old legend, is 45 feet in depth and

Located on the banks of Lake Michigan, close to Fayette Historic State Park, Kitch-iti-kipi, Shopping, Restaurants, Golf & So Much More!

***Come
Stay &
Enjoy
Your Day***



Located next door to Big Boy Restaurant



Stay with us and check out the Historic town of Fayette

Pet Friendly • Free Wireless & Complimentary Hot Breakfast • Plenty of room for your next conference, reunion, meeting or any other special event.

617 E. Lakeshore Drive • Manistique, MI 49854 • 906-341-6981

MANISTIQUE VISITORS GUIDE

about 200 feet across. Strange incrustations festoon its crystal depths. The overflow from its seething bottom find outlet in a rushing stream that winds through the adjacent forest to empty in Indian Lake,” according to the Bessemer Herald.

The spring maintains a constant water temperature year-round, with more than 10,000 gallons of water per minute gushing from cracks in the underlying limestone.

Another description of the location, from an article published in 1955 in the Escanaba Daily Press, offered a tip of the hat to John I. Bellaire, a local merchant who became entranced by the emerald waters of the spring.

Bellaire, who initially found the spring being used as a logging dump, visited the site almost daily to sit and gaze at waters.

“Today the thousands who board the raft to travel over the spring marvel as they toss coins and watch them descend, among

Continued on page 66



906-341-2253
Waterfront Dining

Visit the
**Upper
Crust Deli**

for Fresh Gourmet
Sandwiches, Hearty
Soups & Homemade
Desserts

5 Star Trip
Advisor Rating



375 TRADERS' POINT DRIVE
MANISTIQUE, MI
Open 7 Days in Summer.
Major credit cards accepted.
Dependably Delicious since 1999



*“Serving the people and natural resources of
Schoolcraft County since 1965”*

**Schoolcraft
Conservation District**

P.O. Box 250
Manistique, MI 49854
(906) 286-2890

www.schoolcraftcd.org
Facebook page
[schoolcraftconservationdistrict](https://www.facebook.com/schoolcraftconservationdistrict)

Our Services

- Annual Spring Tree and Shrub Sale
- Central U.P. native wildflower and grass seed for sale
- Soil Erosion and Sedimentation Control permits
- Grants for: Electronic and Scrap Tire Recycling, Wildlife habitat improvement and Invasive species control projects
- Natural resource education scholarships for students and teachers
- Annual fruit tree pruning workshop
- Natural Resource education outreach programs
- Michigan Agricultural Environmental Stewardship Program
- Environmental Assurance for farms and private forest lands
- Tree Farm Program
- Forest Management Planning
- Shared Natural Resource Technicians
- Member of the Central Invasive Species Management Area

The mission of Schoolcraft Conservation District is to assist all county residents, businesses and governmental units with information, education and technical services in all aspect of natural resource and/or environmental issues, specializing in local assistance to non-industrial private landowners.

Continued from page 65

“ The ‘Big Spring,’ ”
 which received
 its name from
 an old legend, is 45 feet in
 depth and about 200 feet
 across. Strange incrusta-
 tions festoon its crystal
 depths. The overflow from
 its seething bottom find
 outlet in a rushing stream
 that winds through the
 adjacent forest to empty
 in Indian Lake

Bessemer Herald

April 1929

clearly visible trout and limestone-encrusted timbers; to the depth of the 40-foot pool,” the newspaper said. “Without John Bellaire’s aid, it is felt the Big Spring would have been commercialized and that the park area there would not have developed.”

Bellaire persuaded Frank Book of the Palms Book Land Co. in Detroit to sell 90 acres around the spring to the state for \$10 to preserve the area as part of a state park. Later land acquisitions and exchanges brought the park’s acreage to a total of 308 acres.

Bellaire and an American Indian friend created Indian legends about the spring to attract more visitors to the site.

During the summer of 1933, James W. Boynton, a nephew of Bellaire and chemistry instructor at Western State Teachers’ college, made a qualitative analysis of the spring’s waters, finding them to contain iron carbonate, calcium chloride, magnesium sulfate and

Discover Adventure Discover Quality!

Other nearby attractions:

Pictured Rocks

- Seul Choix -Lighthouse

- Bishop Baraga Shrine



- Free WiFi
- Free Hot Breakfast
- Pet Friendly
- Fitness Center



906-341-3777

905 E. Lakeshore Drive Manistique, MI 49854

sodium.

The following April, a county engineer reported the spring was topped with a thin sheet of ice. Newspapers reported the occurrence as the first time the spring had ever been known to freeze over.

“Kitch-iti-kipi has been free from ice throughout the past winter during which upon one occasion the mercury dropped to 40 degrees below zero, the coldest weather experienced here in 31 years,” the Escanaba Daily Press reported. “Heretofore, tests of the water have shown the temperature to be fairly constant, hovering within a degree of the 40 mark both winter and summer.”

The newspaper article included an explanation for the frozen spring in the context of Boynton’s research.

“It is believed that the mineral laden water, being heavier, sank to the bottom, thus causing the stagnant surface water, which was relatively free from minerals, to freeze,” the article stated. “As Indian Lake is still ice-

bound, there is no outlet for the surface water which is draining into the spring from the surrounding landscape.”

Dennis Green, current Michigan Department of Natural Resources supervisor at Indian Lake and Palms Book state parks, confirmed that ice does occasionally cover the spring.

“Generally, this occurs in the spring or during a winter thaw,” Green said. “Basically, it happens when snow melts from the surrounding cedar swamp and runs into the Big Spring.”

Until the ice thawed, park staff closed the raft.

Palms Book State Park is found at the northern terminus of M-149.

For more about Palms Book State Park, see page 57. For more about the Friends of Indian Lake and Palms Book, see page 6.

BOAT / PONTOON / ATV / SXS

SALES / SERVICE / RENTALS

www.FISHANDHUNTSHOP.com
Curtis, MI - 906-586-9531

Highlight Events at the ECA 2022

MISSION STATEMENT
The mission of the Erickson Center for the Arts is to enrich the mind, body and spirit of the Eastern Upper Peninsula communities we serve through the presentation of artistic and cultural exhibitions and programs. We strive to facilitate experiences that will encourage personal growth beyond our walls and our community. The Erickson Center for the Arts is a 501 (c) (3) tax exempt non-profit organization.

Highlight Events at the ECA 2022

- North of 45 Writer’s Retreat ~ May 1-4
- Nonsense the Musical~May 18-20 ~Pine Performance Center
- Music in the Park Series ~June 15-August 24
- Above the Bridge Songwriter’s Weekend 1 & 2~ June 2-4 / June 9 -11
- Paint with Steve Ross!~June 20-22
- Comedy Magician Mike Bliss ~July 7~Pine Performance Center
- Oliver the Musical ~July 28-30 ~Pine Performance Center
- 5th Annual 906 Festival ~August 6
- Summer Heat Concert Week ~August 8-12~ Pine Performance Center
- Curtis Show & Shine Car Show~ August 27

Visit our website for more event information.

Erickson Center for the Arts / Waterfront Gallery & Gifts
N9224 Saw-Wa-Quato St.
Curtis, MI 49820
906.586.9974
Open year round Monday-Friday

Erickson Center for the Arts

Follow us on Facebook
www.facebook.com/EricksonCenter/

www.Ericksoncenter.org • info@ericksoncenter.org
www.Ericksoncenter.org • info@ericksoncenter.org

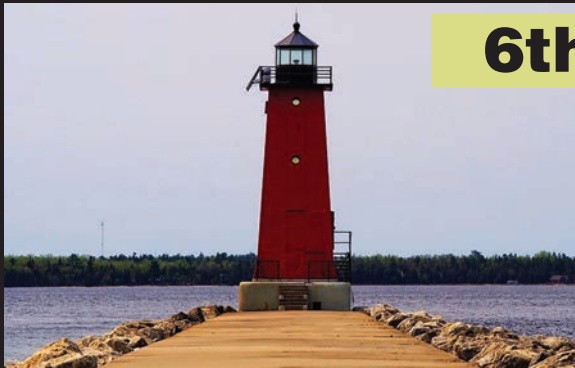
DID YOU KNOW?

What's in a Name?

Schoolcraft County was named after Henry Schoolcraft, an American geographer, geologist and ethnologist who studied Native American cultures. His wife, Jane, was half Ojibwa and taught Schoolcraft the Ojibwe language and about the Ojibwe culture. In 1846 the widower Schoolcraft was commissioned by Congress for a major study, known as "Indian Tribes of the United States," which was published in six volumes from 1851 to 1857.



Henry Rowe Schoolcraft



6th Annual



Featuring Over 40 Michigan Brews, Hard Ciders & Seltzers

August 20, 2022

Manistique - Marina/Boat Launch

1:00-6:00pm

Advanced Tickets

Just \$40!

Tickets On Sale July 2022!



Tickets Can Be Purchased At Wheaty's Bar & Manistique Elks Lodge #632
Or At www.hopsontheharbor.com & On Our Facebook Page!

Feature

SUMMER CONCERT SERIES

This year’s Music in Manistique Summer Concert Series will be presented by Lake Effect Community Arts Center in partnership with the City of Manistique. The concerts are sponsored by Manistique businesses and organizations and by a mini-grant from the Michigan Arts and Culture Council. Concerts

will be performed outside at the Manistique City Band Shell, located in beautiful Central Park, beginning at 7 p.m. In the case of inclement weather, concerts will be moved to Little Bear West Arena, located at 180 North Maple Street. Concertgoers are encouraged to bring a lawn chair.

June 15	Gran DeSign
June 22	Papa John & Black Mirage
June 29	Petoskey Steel Drum Band
July 6	Crossroads Band
July 13	Chasin Steel
July 20	Papa John & Black Mirage
July 27	Fyrbyrd
August 3	Maynard Brothers
August 10	Backwoods 906
August 17	Flat Broke Blues Band
August 24	Blue Water Ramblers



Imagery © 2022 Maxar Technologies, USDA Farm Service Agency. Map data © 2022 Google Maps.

The Hub

START IN MANISTIQUE, GO ANYWHERE

Schoolcraft County is a great location for a quick get-away. Manistique – located right along US-2 – is also a great hub. From here, a multitude of great sites are just a quick drive down the road.

Munising

45 miles from Manistique

Located on the northern shore of the Upper Peninsula on M-28, between Marquette and Newberry.

Top attractions include Pictured Rocks National Lakeshore, Pictured Rocks boat cruises, Glass Bottom Shipwreck Tours, Ripetide Ride, waterfalls, Alger Underwater Preserve, Grand Island National Recreation Area.

A visitors information center is located at the Alger County Chamber of Commerce building on the corner of Elm and Munising Avenues in town. Call (906) 387-2138 for more information on things to see and do in the city or visit www.munising.com.



Superior State Agency

“Insurance Specialists”

Auto Insurance
Life, Home, Health & Business Insurance

202 Deer Street
Manistique, MI 49854
906-341-6907
www.superiorstate.com

COOKIE CUTTERS ARE FINE FOR COOKIES
WE'D RATHER MAKE CUSTOM BUILT HOMES




Wausau Homes

Only Wausau Homes builds fully custom one of a kind, superior quality homes – from floor plans to finishes - with a firm price and move in date, guaranteed. Get started on yours today!

100% OF WAUSAU HOMES
YOUR WAY FIRM PRICE ON TIME

WAUSAU HOMES MANISTIQUE
906.341.3333
WausauHomes.com



Upper Tahquamenon Falls

Photo by Attila Nagy

Tahquamenon Falls

87 miles from Manistique

41382 W. M 123
Paradise, MI 49768
Phone Number: (906) 492-3415

Located in Michigan’s Upper Peninsula near Newberry and Paradise, Tahquamenon Falls State Park is the second largest state park in Michigan. Most of the 500,000 annual visitors come to this 45,000-acre wilderness gem to see two of Michigan’s most beautiful waterfalls.

The Upper Falls, one of the largest waterfalls east of the Mississippi has a drop of nearly 50 feet, more than 200 feet across and a water flow of more than 50,000 gallons per second.

Tahquamenon Falls State Park also has more than 40 miles of hiking trails, 13 inland lakes, 24 miles of the Tahquamenon River and approximately 20,000 acres of natural area.

The variety of wildlife includes 125 species of nesting birds, plus moose, bear, wolves, fishers and more.

Newberry

60 miles from Manistique

Top Attractions: Tahquamenon Falls, Oswalds’ Bear Ranch, Tahquamenon Logging Museum

From Newberry, go four miles north on M-123; turn left on Deer Park Road (H-37) and travel four more miles to Oswalds’ Bear Ranch. For more information, call (906) 293-3147.

Logging enthusiasts may enjoy a stop to the Tahquamenon Logging Museum, which displays many old logging artifacts. Visitors can stop in an old cook shack, tour the museum, watch a slide presentation or take a walk on the boardwalk for a good look at the Tahquamenon River.

HOT & COLD DELI FRESH SUBS, PIZZA, CHICKEN, APPETIZERS

2804W US-2
Gulliver, MI 49840
906-283-3114

*Sunoco Branded Fuel
Gas & Diesel • DNR
Licenses • Michigan Lottery
& Lotto • Bait*

Just Up The Road

MUNISING



Munising

Munising has scenic attractions galore to entice visitors for a day trip or longer. Located just 62 miles north of Escanaba, Munising rests along the shores of Lake Superior's sandy beaches in Munising Bay. Its cool, clean waters appeal to anglers, kayakers, canoeists, pleasure-boaters and the hardiest of swimmers.

Munising is the gateway to the Pictured Rocks national Lakeshore, a park that spans more than 73,000 acres. Sight-seers can view some of the spectacular 200-foot high sandstone cliffs in the lakeshore on a Pictured Rocks boat cruise. Other portions of the lakeshore, including Miner's Castle rock formation, can be seen on foot in shore walking expeditions.

Munising is well-known for its many breath-taking waterfalls. Wagner, Alger, Horseshore, Munising and Scott Falls are within a 10-mile radius of the city. Walks of just a few minutes on manicured paths will bring visitors close to the rushing waters. Other nearby water drops, which involved longer hikes, are Miners Falls, AuTrain Falls, and Tannery Falls.

Benches and picnic tables are available

at most waterfall sites for rest and refreshment breaks.

History buffs might enjoy a stop at the

ACE
The helpful place.

**Everything You Need To
Make Your Visit Better!**

ACE **Benjamin Moore**
RENTAL PLACE **STIHL**

**Hoholik's
Hardware**

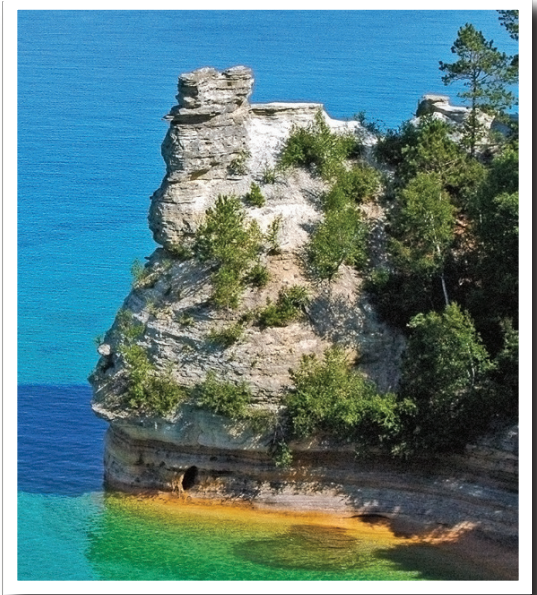
(906) 341-5612 • 145 River St., Manistique

Alger County Historical Museum on Washington Street or a glass-bottom boat tour of shipwrecks on Munising Bay.

Ferry boats transport visitors to Grand Island for tours of the National Recreation area. Miles upon miles of forest trails on the island and the mainland beckon biking and hiking enthusiasts.

Amateur and professional photographers alike should plan to bring an extra battery or two to make sure they can capture all that the area has to offer.

A visitors information center is located at the Alger County Chamber of Commerce building on the corner of Elm and Munising Avenues in the city. Call (906) 387-2138 for more information on things to see and do in the city, visit www.munising.com.



Miners Castle at Pictured Rocks

Photo by Charles Dawley

Family Owned Since 1968

Northwoods

CANOE & KAYAK Rentals

- Canoe & kayak trips on the Au Train River
- Convenient private parking & launch
- 1-5 hr. trips through Hiawatha National Forest

BOOK ONLINE!

paddleautrain.com
 (906) 892-8114

NORTHWOODS RESORT
 N7070 Forest Lake Rd.
 Au Train, MI

We Have Your Target Market COVERED.

Marketing & Advertising Consultant

- Over a decade of experience helping local businesses succeed
- Client partnerships in restaurant, retail and service industries
- Print, digital and social media strategies to maximize your audience reach
- A proven track record and reputation for results
- We have the local market knowledge and experience to maximize audience reach and consumer engagement, building your brand awareness and bottom line.

- 1. We are a trusted information source.**
 People turn to us for more than just local news. They turn to us to find out what's on sale, where to shop and dine, and who to call.
- 2. We are local, serving this community since 1909.**
 As a trusted partner in the community, we are invested in helping local businesses succeed. After all, we live and work here too!
- 3. We integrate print, digital and social media advertising.**
 We make sure your message is seen wherever today's customers look. From niche special section advertising to web and mobile engagement, our comprehensive multimedia approach gives you maximum exposure to new and returning customers.
- 4. We get results.**
 Our personalized sales and marketing campaigns strategically target your immediate objectives and long-term goals as a business, delivering your advertising to more than 14,000 Readers in print alone per day!

DAILY PRESS

Advertising Sales Team
906.786.2021

Business Directory

Thank You To These Businesses Who Made This Visitors Guide Possible!

<u>Business</u>	<u>Page</u>	<u>Business</u>	<u>Page</u>
Barker Construction	70	Lake Effect Art Gallery	44
Bay College	53	La Tulip Brewing	32
Bethal Baptist Church	26	Linda's Bread Box & Sporting Goods	7
Brazda's Heating & Refrigeration	28	Manistique Lakes Area Chamber	17
China King	58	Manistique Oil Co Inc	59
Christophers Antiques	59	Manistique Tourism Assoc	36, 37
City of Manistique Campground	30, 31	Michigan Made	Inside Back Cover
City of Manistique Map of the City	75, 76	Munising Vistors Bureau	Back Cover
Coleman Engineering Co	58	Nicolet Bank	50
Comfort Inn	64	Northwoods Resort	73
Clyde's Drive In	57	Oswalds Bear Ranch	18
Curtis Area Chamber	17	Paul's Plumbing & Appliances	54
Daily Press	73	Pictured Rock Cruises, Inc	Back Cover
Delta Co Chamber / UP State Fair	23	Putvin Healthmart Drugs	57
Delta Schoolcraft ISD	56	Quality Inn & Suites	66
Drift Alchemy	63	Riptide Ride	38
Early Childhood	22	Schoolcraft Conservation	65
Econo Lodge	43	Schoolcraft Memorial Hospital	33
End of the Road Winery	8	Sine Tech	42
Erickson Center	67	St Francis De Sales	25
First United Methodist	27	State Savings Bank	48
Fish & Hunt Shop	67	State Wide RE - Manistique	7
Flatiron Brewing Company	20	Sunset Point Lodge	56
Friends of Indian Lake	32	Superior State Agency	70
Garlyn Zoo	52	Tahquamenon Falls Bout Tours	9
Gray Wolf Lodge	10	Tahquamenon Falls Brewery	55
Greenstone Farm Credit Service	61	Tap 21	29
Grover Real Estate	15	Top O' The Lakes Sports & Gifts	11
Gullivers Cross Roads	71	Top of the Lake Snowmobile Museum	54
Habitat For Humanity	12	Top of The Lake Comm Assn	34
Halfway Lake Cottages	14	Travel Marquette	39
Harbor Motel	21	Treasure City	3
Highline	35	UP Paper LLC	29
Hoholick Ace Hardware	72	UP Tire Service Inc	48
Hops on the Harbor - Manistique Elks	68	Upper Crust Deli	65
Indian Lake Golf Course & CC	19	Woodland Assisted Living	41
Island Resort & Casino	13	Woodstar Beach Camp	23
Kewadin Casinos	Inside Front Cover	Zephyr Fuel	50
Krusin Klassics	24		

Michigan Made



MICHIGAN TAP ROOM

BEER & WINE • SPECIALTY FOODS • ART • GIFTS • & MORE
OUTSIDE SEATING • FOOD TRUCKS • PIZZA DELIVERY

GIFT BASKETS
READY-MADE AND
SPECIAL ORDER

215 OAK ST.
CORNER OF
OAK AND S. MAPLE



WHILE AT MICHIGAN MADE CHECK OUT THE

State of Copper Art

Each piece made of heavy gauge U.P. mined copper is acid oxidized, sealed in crystal clear resin (a 42 step, 10 day process!) and signed by Michigan Artist, Alex Teselsky.

You won't find a larger display of State of Copper Art anywhere in the U.P.!

215 OAK ST • MANISTIQUE • 906-286-4284
WWW.JUSTMICHIGANMADE.NET





**PICTURED ROCKS
CRUISES**

DISCOVER ONE OF AMERICA'S RAREST GEOLOGICAL WONDERS

Take an adventure cruise along Pictured Rocks National Lakeshore! Be one of the few to explore these rainbow-colored sandstone formations up close—cruising along miles of shoreline in America's largest and deepest Great Lake.



**Book Now at
PicturedRocks.com**

(906) 387-2379



PLAN YOUR TRIP AT MUNISING.ORG