

## Marine molluscs of the Turkish coasts: an updated checklist

Bilal ÖZTÜRK<sup>1\*</sup>, Alper DOĞAN<sup>1</sup>, Banu BİTLİS-BAKIR<sup>2</sup>, Alp SALMAN<sup>1</sup>

<sup>1</sup>Department of Hydrobiology, Faculty of Fisheries, Ege University, Bornova, İzmir, Turkey

<sup>2</sup>Institute of Marine Sciences and Technology, Dokuz Eylül University, İnciraltı, İzmir, Turkey

Received: 03.05.2014

Accepted: 20.08.2014

Published Online: 00.00.2013

Printed: 00.00.2013

**Abstract:** This study presents the molluscan species diversity along the Turkish coasts. The compilation of the available references revealed a total of 1065 species belonging to 7 classes (Caudofoveata, Solenogastres, Polyplacophora, Gastropoda, Bivalvia, Scaphopoda, and Cephalopoda). Most of the reported species belong to the class Gastropoda (706 species), followed by Bivalvia (279 species), Cephalopoda (50 species), Polyplacophora (17 species), Scaphopoda (10 species), Caudofoveata (2 species), and Solenogastres (1 species). Among the coasts of Turkey, the highest number of molluscan species was recorded from the Aegean Sea (825 species), followed by the Levantine Sea (807 species), Sea of Marmara (537 species), and the Black Sea (155 species). Of the 1065 mollusc taxa, 118 species are alien ones that originated outside the Mediterranean Sea. Among the listed species, *Timoclea roemeriana* (Bivalvia), and *Sepiola ligulata* and *Abraliopsis morisii* (both from Cephalopoda) are new records for the Turkish mollusc fauna, 11 species of the classes Polyplacophora, Gastropoda, and Bivalvia (*Leptochiton boettgeri*, *Cerithium protractum*, *Similiphora similior*, *Cerithiopsis diadema*, *Rissoa guerinii*, *Crepidula moulinsii*, *Crepidula unguiformis*, *Bela zenetouae*, *Doto coronata*, *Lima marioni*, and *Limaria loscombi*) are new reports for the Levantine coast of Turkey, and 2 gastropod species (*Acirsa subdecussata* and *Monotygma lauta*) are new reports for the Aegean coast of Turkey. Among the listed taxa, 27 species have been classified in the IUCN Red List or Barcelona/Bern Conventions.

**Key words:** Mollusca, species diversity, alien species, protected species, coasts of Turkey

### 1. Introduction

The Mollusca are one of the large and well-studied groups of the animal kingdom, with about 50,000 marine-living species (Bouchet, 2006) belonging to 8 classes. Among the molluscs, the gastropods dominate and consist about 80% of the extant species (Ponder and Lindberg, 2008).

The coasts of Turkey have been subject to different studies for over 2 centuries, and the first available information is from 1775. Forsskål (1775), in a study performed in İzmir Bay (Aegean Sea) and the Sea of Marmara, reported *Nassarius reticulatus*, *Arca noae*, *Pinna nobilis*, *Solecurtus strigilatus*, and *Octopus vulgaris*; these molluscs seem to be the first registered species from the Turkish coasts after the binomial nomenclature. This study was followed by Forbes (1844) and Colombo (1885); these authors reported some species from the Levantine Sea, Aegean Sea, and Dardanelles.

Although it can be seen that the number of studies on the Turkish marine molluscs increased in the first half of the 20th century (i.e. Kowalewsky, 1901; Zernow, 1913; Pallary, 1917; Gruvel, 1931; Jakubova, 1935; Jakubova,

1948), the increasing number of research studies is much more significant especially in the last 3–4 decades. The great interest focused on alien species (i.e. Blöcher, 1983; Kinzelbach, 1985; van Aartsen et al., 1989; Micali and Palazzi, 1992; Engl, 1995; Buzzurro and Greppi, 1996; Çeviker and Albayrak, 2002; Çınar et al., 2006; Öztürk and Can, 2006; Öztürk and van Aartsen, 2006; Öztürk, 2012; Öztürk and Bitlis-Bakır, 2013b, 2013c) made a considerable contribution to the augmentation of the species number. Some checklists concerning the Turkish marine molluscs have been published in the past (Öztürk and Çevik, 2000; Yokeş, 2009; Albayrak, 2011). Among them, the checklist by Öztürk and Çevik (2000) includes all the marine molluscs, whereas the publication by Yokeş (2009) covers the opisthobranch molluscs, and the one by Albayrak (2011) contains the bivalves only. The large number of studies performed on molluscs, especially in recent decades, revealed newly described species and new information covering their distributional areas and bathymetric zones. Thus, there was a need to update the checklists, which have significantly changed.

\* Correspondence: bilal.ozturk@ege.edu.tr

**2. Materials and methods**

In the preparing of the present checklist data of more than 200 studies were compiled and, different from the previous checklists, for each listed species the reference in which the species was first reported from the relevant Turkish coasts was noted. Only for some species reported long before or with special status, additional references were given.

In the preparation of the present checklist, some species previously reported from the Turkish coasts were excluded for being doubtful records, misidentifications, or not valid ones, and they are given in a separate table. All the species were checked for the present valid nomenclature and the systematic is arranged according to the CLEMAM database (except for some species, for which WoRMS were taken into consideration).

The present study also deals with the species encountered during different research projects performed on the Turkish Levantine and Aegean coasts that are new records for these areas.

In order to evaluate the molluscan studies along the Turkish coasts, the mentioned coasts were divided into grids 15 × 15 km and all distributional data concerning each species were entered in an Excel file and then imported and digitised through the ArcGIS 9.3 software.

**3. Results and discussion**

Updating of the references reviewed in the previous checklists by Öztürk and Çevik (2000), Yokeş (2009), and Albayrak (2011) revealed a total of 1065 mollusc species recorded along the Turkish coasts by the first half of 2014. Among the mollusc classes represented in the Turkish seas, the class Gastropoda dominates, with 706 species, followed by Bivalvia (279 species) (Table 1, Figure 1). The class Solenogastres is represented by a single species only, whereas the class Monoplacophora is not recorded.

As for the number of distributed species according to the coasts of Turkey, the Aegean Sea ranks first, with 825 species, followed by the Levantine Sea (807 species), Sea

**Table 1.** Checklist of marine molluscs of Turkey [BS: Black Sea; SM: Sea of Marmara; AS: Aegean Sea; LS: Levantine Sea; B: Bosphorus; D: Dardanelles; DR: Depth range (I: 0–10 m; II: 11–50 m; III: 51–100 m; IV: 101–200 m; V: 201–400 m; VI: 401–600 m; VII: >600 m); H: Habitat (HS: Hard substratum – including algae, sponge, mussels etc.; Ss: soft substratum – including all phanerogams; P: pelagic; D: Demersal; Pz: Parasite); PS: Present study; \*: Alien species; \*\*: Remarks; #: Endangered or threatened species].

Group/Species	BS	SM	AS	LS	B	D	DR	H
<b>CAUDOFOVEATA</b>								
<b>Chaetodermatidae</b>								
<i>Falcidens gutturosus</i> (Kowalewsky, 1901)		R8	R170	R170			III-VII	Ss
<b>Prochaetodermatidae</b>								
<i>Prochaetoderma raduliferum</i> (Kowalewsky, 1901)		R8		R214			II-VII	Ss
<b>SOLENOGASTRES</b>								
<b>Pruvotinidae</b>								
<i>Eleutheromenia carinata</i> Salvini-Plawen & Öztürk, 2006			R170				III	Ss
<b>POLYPLACOPHORA</b>								
<b>Leptochitonidae</b>								
<i>Lepidopleurus cajetanus</i> (Poli, 1791)			R64	R88		R223	I,II	Hs, Ss
<i>Leptochiton africanus</i> (Nierstrasz, 1906)			R64			R223	I-IV	Hs, Ss
<i>Leptochiton boettgeri</i> Sulc, 1934			R53	PS			I-III	Hs, Ss
<i>Leptochiton cancellatus</i> (Sowerby, G. B.II, 1840)		R6	R166	R214			II	Ss
<i>Leptochiton cimicoides</i> (Monterosato, 1879)			R182			R223	I-III	Hs, Ss
<i>Leptochiton scabridus</i> (Jeffreys, 1880)			R108				I	Hs
<b>Hanleyidae</b>								
<i>Hanleya hanleyi</i> (Bean in Thorpe, 1844)			R182				III	Ss
<b>Ischnochitonidae</b>								
<i>Ischnochiton rissoi</i> (Payraudeau, 1826)			R2, R64	R88			I-III	Hs, Ss
<b>Callochitonidae</b>								
<i>Callochiton septemvalvis</i> (Montagu, 1803)			R64	R137			I-VI	Hs, Ss
<b>Chitonidae</b>								
<i>Chiton corallinus</i> (Risso, 1826)		R6, R130	R2, R108	R137			II-IV	Hs, Ss

**Table 1.** (Continued).

<i>Chiton olivaceus</i> Spengler, 1797		R6, R27	R64	R88	R76	R3, R223	I,II	Hs, Ss
<b>Lepidochitonidae</b>								
<i>Lepidochitona caprearum</i> (Scacchi, 1836)	R139	R49, R130	R10, R41	R88	R4		I-IV	Hs, Ss
<i>Lepidochitona cinerea</i> (Linnaeus, 1767)		R27	R41, R108	R137	R4	R3	I	Hs, Ss
<i>Lepidochitona furtiva</i> (Monterosato, 1879)			R182				I	Ss
<i>Lepidochitona monterosatoi</i> Kaas & Van Belle, 1981			R108	R210			II	Hs, Ss
<b>Acanthochitonidae</b>								
<i>Acanthochitona crinita</i> (Pennant, 1777)			R64	R137		R223	I-IV	Hs
<i>Acanthochitona fascicularis</i> (Linnaeus, 1767)	R130	R6, R27	R2, R41	R88	R4	R223	I-IV	Hs, Ss
<b>GASTROPODA</b>								
<b>Patellidae</b>								
<i>Patella caerulea</i> Linnaeus, 1758	R14,R177	R16, R27	R41	R88	R16	R10	I	Hs
<i>Patella rustica</i> Linnaeus, 1758			R41	R88			I	Hs
<i>Patella ulyssiponensis</i> Gmelin, 1791			R41	R130			I,II	Hs
<b>Lottiidae</b>								
<i>Tectura virginea</i> (Müller, O.F., 1776)		R5, R6	R2, R130	R130	R16		I-IV	Hs, Ss
<b>Fissurellidae</b>								
<i>Diodora demartiniorum</i> Buzzurro & Russo, 2004			R165				I	Hs
<i>Diodora dorsata</i> (Monterosato, 1878)			R229				I	Hs
<i>Diodora gibberula</i> (Lamarck, 1822)		R5, R27	R59	R88		R7, R10	I-III	Hs, Ss
<i>Diodora graeca</i> (Linnaeus, 1758)	R14, R18	R6, R130	R107	R130	R4, R7	R3, R223	I-V	Hs, Ss
<i>Diodora italica</i> (Defrance, 1820)		R16, R130	R78, R107	R130		R10	I-III	Hs, Ss
* <i>Diodora ruppellii</i> (Sowerby, G. B. I, 1835)				R61, R65			I,II	Hs
<i>Emarginula adriatica</i> Costa, O. G., 1829		R6, R130	R59	R130			III	Hs, Ss
<i>Emarginula huzardii</i> Payraudeau, 1826			R59	R88			I-III	Hs, Ss
<i>Emarginula octaviana</i> Coen, 1939			R59	R88			I,II	Hs, Ss
<i>Emarginula rosea</i> Bell, T., 1824	R130	R5, R6	R2, R130				II-IV	Hs, Ss
<i>Emarginula sicula</i> Gray, J.E., 1825		R16	R59	R88			I-III	Hs
<i>Fissurella nubecula</i> (Linnaeus, 1758)			R186	R88			I	Hs
<b>Scissurellidae</b>								
<i>Anatoma crispata</i> (Fleming, 1828)		R130	R130				III,IV	Ss
<i>Scissurella costata</i> d'Orbigny, 1824	R13,R14	R6, R186	R59	R88	R18		I-III	Hs, Ss
<i>Sinezona cingulata</i> (Costa O.G., 1861)			R107	R88			I,II	Hs, Ss
<b>Haliotidae</b>								
# <i>Haliotis tuberculata lamellosa</i> Lamarck, 1822			R59	R88			I,II	Hs, Ss
<b>Lepetellidae</b>								
<i>Lepetella laterocompressa</i> (de Rayneval & Ponzi, 1854)		R130,R239					III	Ss
<b>Trochidae</b>								
* <i>Trochus erithreus</i> Brocchi, 1821				R68, R84			I	Hs
<i>Clanculus corallinus</i> (Gmelin, 1791)		R6, R130	R10, R107	R88		R3	I,II	Hs, Ss
<i>Clanculus cruciatus</i> (Linnaeus, 1758)		R27	R107	R88		R10, R223	I,II	Hs, Ss
<i>Clanculus jussieui</i> (Payraudeau, 1826)			R107	R12,R88			I,II	Hs, Ss
<i>Clelandella militaris</i> (Brocchi, 1814)		R130	R130	R130			III,IV	Ss
<i>Gibbula adansonii</i> (Payraudeau, 1826)	R129	R27	R130	R88		R10, R223	I,II	Hs, Ss

**Table 1.** (Continued).

<i>Gibbula adriatica</i> (Philippi, 1844)	R28,R177	R6, R186	R130		R4, R7		I,II	Hs
<i>Gibbula albida</i> (Gmelin, 1791)	R129	R6, R27	R107	R2	R4	R10, R223	I,II	Hs, Ss
<i>Gibbula ardens</i> (Salis Marschlin, 1793)		R6, R7	R59	R88		R223	I,II	Hs, Ss
<i>Gibbula deversa</i> Milaschewitsch, 1916	R14, R30				R18		II,III	Ss
<i>Gibbula divaricata</i> (Linnaeus, 1758)	R130	R16, R27	R107	R88	R4, R7	R223	I,II	Hs, Ss
<i>Gibbula fanulum</i> (Gmelin, 1791)			R2, R107	R88	R4	R6	I-IV	Hs, Ss
<i>Gibbula guttadauri</i> (Philippi, 1836)		R6, R27	R130	R88		R223	I,II	Ss
<i>Gibbula leucophaea</i> (Philippi, 1836)			R59	R210			II	Hs, Ss
<i>Gibbula magus</i> (Linnaeus, 1758)		R6, R16	R79	R130	R7, R19	R7	I,II	Hs, Ss
<i>Gibbula philberti</i> (Récluz, 1843)		R27	R130	R88			I	Hs, Ss
<i>Gibbula racketti</i> (Payraudeau, 1826)						R223	II	Ss
<i>Gibbula varilineata</i> (Michaud, 1829)			R107	R130		R223	I,II	Hs, Ss
<i>Gibbula spratti</i> (Forbes, 1844)			R2, R130	R2		R223	I,II	Ss
<i>Gibbula turbinoides</i> (Deshayes, 1835)			R107	R88		R223	I,II	Hs, Ss
<i>Gibbula umbilicaris</i> (Linnaeus, 1758)			R10, R107	R88		R10	I,II	Hs, Ss
<i>Gibbula varia</i> (Linnaeus, 1758)		R186	R10, R107	R2, R88	R7	R10, R223	I,II	Hs, Ss
<i>Jujubinus exasperatus</i> (Pennant, 1777)		R6, R19	R59	R88	R4, R7	R223	I-IV	Hs, Ss
<i>Jujubinus gravinae</i> (Dautzenberg, 1881)			R130				I-III	Ss
<i>Jujubinus karpatoensis</i> Nordsieck, 1973			R107				I,II	Hs
<i>Jujubinus montagui</i> (Wood, W., 1828)		R7		R210	R7	R7, R223	II-IV	Ss
<i>Jujubinus striatus</i> (Linnaeus, 1758)		R6, R27	R10, R107	R2, R88		R6, R10	I-III	Hs, Ss
<i>Phorcus articulatus</i> (Lamarck, 1822)		R6	R32, R107	R88		R6, R10	I	Hs
<i>Phorcus mutabilis</i> (Philippi, 1846)		R6, R27	R110	R130			I	Hs
<i>Phorcus richardi</i> (Payraudeau, 1826)			R59	R88		R10	I,II	Hs, Ss
<i>Phorcus turbinatus</i> (Born, 1778)		R6, R16	R32, R41	R88			I	Hs
* <i>Pseudominolia nedyma</i> (Melvill, 1897)				R68,R85			I-III	Ss
* <i>Stomatella impertusa</i> (Burrow, 1815)				R109			I	Hs
<b>Calliostomatidae</b>								
<i>Calliostoma conulus</i> (Linnaeus, 1758)		R6	R130	R88		R3, R223	II,III	Hs, Ss
<i>Calliostoma granulatum</i> (Born, 1778)		R6, R16	R186	R138	R7, R18		II-IV	Ss
<i>Calliostoma laugierii</i> (Payraudeau, 1826)			R78, R107	R88		R223	I-III	Hs, Ss
<i>Calliostoma virescens</i> Coen, 1933			R130				?	?
<i>Calliostoma zizyphinum</i> (Linnaeus, 1758)		R6	R110	R130		R7, R223	II-IV	Hs, Ss
<b>Turbinidae</b>								
<i>Bolma rugosa</i> (Linnaeus, 1767)		R6, R16	R10, R96	R88		R7	II,III	Hs, Ss
<b>Skeneidae</b>								
* <i>Parviturbo dibellai</i> Buzzurro & Cecalupo, 2007				R162			I	Hs, Ss
<i>Skenea catenoides</i> (Monterosato, 1877)				R88			I,II	Ss
<i>Skenea serpuloides</i> (Montagu, 1808)				R88			I-III	Hs, Ss
<b>Chilodontidae</b>								
<i>Danilia tinei</i> (Calcara, 1839)		R6					III	Ss
<b>Calliotropidae</b>								
<i>Putzeysia wiseri</i> (Calcara, 1842)		R199					VII	Ss
<b>Phasianellidae</b>								
<i>Tricolia pullus pullus</i> (Linnaeus, 1758)	R129	R6, R21	R10, R41	R88	R4, R89	R10, R223	I,II	Hs, Ss

**Table 1.** (Continued).

<i>Tricolia speciosa</i> (Megerle von Mühlfeld, 1824)			R78,R107	R130			R39, R223	I,II	Ss
<i>Tricolia tenuis</i> (Michaud, 1829)	R27		R41, R59	R88				I,II	Hs, Ss
<b>Colloniidae</b>									
<i>Homalopoma sanguineum</i> (Linnaeus, 1758)	R7		R59	R88				I-IV	Hs, Ss
<b>Neritidae</b>									
* <i>Nerita sanguinolenta</i> Menke, 1829				R173				I	Hs, Ss
* <i>Smaragdia souverbiana</i> (Montrouzier, 1863)				R77				I	Hs, Ss
<i>Smaragdia viridis</i> (Linnaeus, 1758)			R59	R88			R223	I,II	Hs, Ss
<b>Cerithiidae</b>									
<i>Bittium lacteum</i> (Philippi, 1836)			R183				R223	II	Ss
<i>Bittium latreillii</i> (Payraudeau, 1826)		R5, R27	R10, R59	R88			R10, R223	I-V	Hs, Ss
<i>Bittium reticulatum</i> (da Costa, 1778)	R73, R80	R6, R27	R2, R41	R2, R88	R4, R7		R7, R10	I-IV	Hs, Ss
<i>Bittium submamillatum</i> (de Rayneval & Ponzi, 1854)	R130	R6, R130	R130	R88	R4		R223	II-V	Ss
* <i>Cerithidium diplax</i> (Watson, 1886)				R158				I,II	Ss, Hs
* <i>Cerithidium perparvulum</i> (Watson, 1886)				R88, R158				I,II	Ss
<i>Cerithium alucastrum</i> (Brocchi, 1814)		R6, R130	R110	R130				I-III	Ss
<i>Cerithium lividulum</i> Risso, 1826			R130					I	Hs, Ss
<i>Cerithium protractum</i> Bivona, Ant in Bivona, And., 1838		R6	R2, R110	PS			R186	I-III	Hs, Ss
<i>Cerithium renovatum</i> Monterosato, 1884							R10	I,II	Ss
* <i>Cerithium scabridum</i> Philippi, 1848			R59, R110	R42, R52				I,II	Hs, Ss
# <i>Cerithium vulgatum</i> Bruguière, 1792	R130	R6, R19	R32, R41	R2, R88	R4, R7		R7, R10	I-III	Hs, Ss
* <i>Rhinoclavis kochi</i> (Philippi, 1848)				R52,R61				I,II	Ss
<b>Dialidae</b>									
* <i>Diala semistriata</i> (Philippi, 1849)				R178				I	Hs
<b>Litiopidae</b>									
* <i>Gibborissoia virgata</i> (Philippi, 1849)				R122				I	Hs
<b>Scaliolidae</b>									
* <i>Finella pupoides</i> Adams, A., 1860			R167	R64				I,II	Ss
<b>Planaxidae</b>									
<i>Fossarus ambiguus</i> (Linnaeus, 1758)			R59	R88				I	Hs, Ss
<b>Potamididae</b>									
<i>Potamides conicus</i> (de Blainville, 1829)			R59	R88				I	Ss
<b>Siliquariidae</b>									
<i>Tenagodus obtusus</i> (Schumacher, 1817)		R6, R19	R130	R88				I-III	Hs, Ss
<b>Turritellidae</b>									
<i>Turritella communis</i> Risso, 1826	R14, R28	R6, R27	R32, R110	R17, R88	R4, R7		R7, R223	I-III	Hs, Ss
<i>Turritella turbona</i> Monterosato, 1877		R5, R19	R2, R130	R2,R130	R7		R7, R223	II-IV	Hs, Ss
<b>Triphoridae</b>									
<i>Marshallora adversa</i> (Montagu, 1803)		R6	R2, R131	R88			R223	I-IV	Hs, Ss
* <i>Metaxia bacillum</i> (Issel, 1869)				R68, R85				I	Hs, Ss
<i>Metaxia metaxa</i> (Delle Chiage, 1828)		R6, R130	R130	R88				I-III	Hs, Ss
<i>Monophorus erythrosoma</i> (Bouchet & Guillemot, 1978)			R183	R210				I,II	Ss
<i>Monophorus perversus</i> (Linnaeus, 1758)	R130	R6, R21	R41, R130	R130	R4, R7		R10, R223	I-III	Hs, Ss
<i>Monophorus thiriota</i> Bouchet, 1985			R187					II-IV	Ss

**Table 1.** (Continued).

<i>Similiphora similior</i> (Bouchet & Guillemot, 1978)			R187	PS			II	Ss
<b>Cerithiopsidae</b>								
<i>Cerithiopsis barleei</i> Jeffreys, 1867		R130	R130	R130			I	Hs, Ss
<i>Cerithiopsis buzzurroi</i> (Cecalupo & Robba, 2010)				R198			II	Ss
<i>Cerithiopsis denticulata</i> (Cecalupo & Robba, 2010)				R198			I,II	Ss
<i>Cerithiopsis diadema</i> Monterosato, 1874			R187	PS			I-III	Hs
<i>Cerithiopsis fayalensis</i> Watson, 1880		R130	R187				III,IV	Ss
<i>Cerithiopsis greppii</i> Buzzurro & Cecalupo, 2004			R186	R136			I	Hs
<i>Cerithiopsis jeffreysi</i> Watson, 1885			R187				II	Ss
<i>Cerithiopsis minima</i> (Brusina, 1865)	R139	R6, R27	R131	R88			I-III	Hs, Ss
<i>Cerithiopsis nana</i> Jeffreys, 1867			R186				I,II	Ss
* <i>Cerithiopsis pulvis</i> (Issel, 1869)				R64			I,II	Hs
<i>Cerithiopsis scalaris</i> Locard, 1892						R223	I	Ss
* <i>Cerithiopsis tenthrenois</i> (Melvill, 1896)				R64			I	Hs, Ss
<i>Cerithiopsis tubercularis</i> (Montagu, 1803)	R130	R6, R27	R130	R88	R4		I-III	Hs, Ss
<i>Dizoniopsis coppolae</i> (Aradas, 1870)		R6, R130	R130	R88			I-III	Ss
<i>Dizoniopsis bilineata</i> (Hoernes, 1848)				R88			I	Ss
<i>Krachia tiara</i> (Monterosato, 1874)			R187				III	Ss
<i>Seila trilineata</i> (Philippi, 1836)				R130			?	?
<b>Janthinidae</b>								
<i>Janthina globosa</i> Swainson, 1822				R130			I,II	P
<i>Janthina janthina</i> (Linnaeus, 1758)				R130			I	P
<b>Aclididae</b>								
<i>Aclis ascaris</i> (Turton, 1819)		R6					III	Ss
<i>Aclis attenuans</i> Jeffreys, 1883			R183				III,IV	Ss
<i>Aclis minor</i> (Brown, 1827)		R130	R2, R130	R130			II,III	Ss
<b>Epitoniidae</b>								
<i>Acirsa subdecussata</i> (Cantraine, 1835)				PS		R7	III-V	Ss
* <i>Cycloscala hyalina</i> (Sowerby, G. B. II, 1844)				R116			I	Ss
<i>Epitonium algerianum</i> (Weinkauff, 1866)		R6	R59			R223	II-IV	Hs, Ss
<i>Epitonium celesti</i> (Aradas, 1854)			R59				II-V	Ss
<i>Epitonium clathratulum</i> (Kanmacher, 1798)		R130	R130	R210			I	Ss
<i>Epitonium clathrus</i> (Linnaeus, 1758)	R129	R6, R27	R10, R41	R12, R88	R4	R10, R223	I-IV	Hs, Ss
<i>Epitonium muricatum</i> (Risso, 1826)		R6, R130	R130	R221		R223	II-IV	Hs, Ss
<i>Epitonium pulchellum</i> (Bivona, Ant., 1832)		R130	R130		R4		III	Hs, Ss
<i>Epitonium turtonis</i> (Turton, 1819)		R6, R27	R59	R88		R223	I-III	Hs, Ss
<i>Gyroscale lamellosa</i> (Lamarck, 1822)			R130	R12, R130	R4		I,II	Hs, Ss
<i>Opalia hellenica</i> (Forbes, 1844)			R59				II,III	Ss
<i>Punctiscalea cerigottana</i> (Sturany, 1896)			R187				V	Ss
<b>Eulimidae</b>								
<i>Curveulima devians</i> (Monterosato, 1884)		R6					II	Pz
<i>Eulima bilineata</i> Alder, 1848		R6	R187	R88		R223	II-IV	Pz

**Table 1.** (Continued).

<i>Eulima glabra</i> (da Costa, 1778)	R28	R6, R130	R2, R130	R88	R91	R223	I-IV	Pz
<i>Ersilia mediterranea</i> (Monterosato, 1869)				R88			I	Pz
<i>Melanella boscii</i> (Payraudeau, 1826)			R187				I	Pz
<i>Melanella levantina</i> (Oliverio, Buzzurro & Villa, 1994)			R81	R81				Pz
<i>Melanella polita</i> (Linnaeus, 1758)		R6	R131	R88	R4, R7	R223	I-IV	Pz
<i>Melanella stalioidi</i> (Brusina, 1869)			R187	R101			I,II	Pz
<i>Nanobalcis nana</i> (Monterosato, 1878)			R187				III,IV	Pz
<i>Parvioris ibizenca</i> (Nordsieck, 1968)			R59	R88			I,II	Pz
<i>Sabinella bonifaciae</i> (Nordsieck, 1974)		R6					I	Pz
<i>Sticteulima jeffreysiana</i> (Brusina, 1869)			R187	R82, R88			II-V	Pz
* <i>Sticteulima lentiginosa</i> (Adams, A., 1861)				R82, R88			I,II	Pz
<i>Vitreolina antiiflexa</i> (Monterosato, 1884)		R27					I	Pz
<i>Vitreolina curva</i> (Monterosato, 1874)		R6, R130	R59	R88			I-IV	Pz
<i>Vitreolina incurva</i> (Bucquoy, Dautzenberg & Dollfus, 1883)		R6	R187	R88			I,II	Pz
<i>Vitreolina perminima</i> (Jeffreys, 1883)				R210			II	Pz
<i>Vitreolina philippi</i> (de Rayneval & Ponzi, 1854)		R197	R59	R81			I-IV	Pz
<b>Littorinidae</b>								
<i>Echinolittorina punctata</i> (Gmelin, 1791)				R88			I	Hs
<i>Melarthaphe neritoides</i> (Linnaeus, 1758)	R14,R129	R27	R32, R41	R88	R16		I	Hs
<b>Skeneopsidae</b>								
<i>Skeneopsis planorbis</i> (Fabricius, O., 1780)				R88			I	Ss
<b>Cingulopsidae</b>								
<i>Eatonina ochroleuca</i> (Brusina, 1869)		R130	R166				II-IV	Ss
<i>Eatonina pumila</i> (Monterosato, 1884)				R88			I	Ss
<b>Rissoidae</b>								
<i>Alvania amatii</i> Oliverio, 1986			R50, R59	R88			I,II	Ss
<i>Alvania aspera</i> (Philippi, 1844)			R130, R186	R186			I	Hs
<i>Alvania beanii</i> (Hanley in Thorpe, 1844)		R6, R130	R130		R4, R7	R223	II	Hs, Ss
<i>Alvania bozcaadensis</i> Tiselli & Guinchi, 2013			R228	R228			II	Ss
<i>Alvania campanii</i> Tiselli & Guinchi, 2013			R228				II	Ss
<i>Alvania cancellata</i> (da Costa, 1778)		R6, R130	R130	R130		R223	I-VII	Hs, Ss
<i>Alvania carinata</i> (da Costa, 1778)			R130	R130			I,II	Ss
<i>Alvania cimex</i> (Linnaeus, 1758)		R6, R27	R59	R2, R88	R4, R18	R10, R223	I-III	Hs, Ss
<i>Alvania cimicoides</i> (Forbes, 1844)	R30	R6, R130	R2, R130	R2, R130		R223	II-VII	Hs, Ss
<i>Alvania colossophilus</i> Oberling, 1970			R166	R88			I,II	Ss
<i>Alvania datchaensis</i> Amati & Oliverio, 1987			R51	R88			I,II	Hs, Ss
<i>Alvania discors</i> (Allan, 1818)		R27	R41, R130	R88		R10	I	Hs, Ss
* <i>Alvania dorbignyi</i> (Audouin, 1826)			R131	R88			I	Ss
<i>Alvania fractospira</i> Oberling, 1970				R88			I	Hs, Ss
<i>Alvania geryonia</i> (Nardo, 1847)		R5, R6	R130	R186		R223	I-III	Hs, Ss
<i>Alvania hispidula</i> (Monterosato, 1884)		R6					III	Ss
<i>Alvania lactea</i> (Michaud, 1830)		R21, R27	R130	R88			I,II	Hs, Ss
<i>Alvania lanciae</i> (Calcara, 1845)		R130	R130	R130			?	?
<i>Alvania lineata</i> Risso, 1826			R41, R130	R130		R223	I,II	Hs, Ss

**Table 1.** (Continued).

<i>Alvania mamillata</i> Risso, 1826			R59	R186			I,II	Hs, Ss
<i>Alvania punctura</i> (Montagu, 1803)		R6, R239	R130				II-V	Ss
<i>Alvania rudis</i> (Philippi, 1844)		R27, R130	R130				I	Ss
<i>Alvania scabra</i> (Philippi, 1844)			R59	R88			I	Ss
<i>Alvania schwartziana</i> Brusina, 1866				R130			?	?
<i>Alvania settepassii</i> Amati & Nofroni, 1985			R229				?	Ss
<i>Alvania testae</i> (Aradas & Maggiore, 1884)		R6, R130	R130	R210		R223	III-VI	Ss
<i>Alvania zetlandica</i> (Montagu, 1815)			R130				III-V	Ss
<i>Benthonella tenella</i> (Jeffreys, 1869)				R218			VII	Ss
<i>Botryphallus epidauricus</i> (Brusina, 1866)				R88			I	Ss
<i>Crisilla semistriata</i> (Montagu, 1808)		R130	R130	R88			I	Hs, Ss
<i>Manzonina crassa</i> (Kanmacher, 1798)		R6, R21	R59	R88		R223	I,II	Hs, Ss
<i>Obtusella intersecta</i> (Wood, S., 1857)		R6, R130	R130				II-IV	Ss
<i>Obtusella macilenta</i> (Monterosato, 1880)			R130				?	?
<i>Pusillina inconspicua</i> (Alder, 1844)	R130	R130	R130	R88		R223	I-IV	Ss
<i>Pusillina lineolata</i> (Michaud, 1830)	R130	R130	R130	R210		R223	I-III	Hs, Ss
<i>Pusillina marginata</i> (Michaud, 1830)			R41, R152	R88		R223	I,II	Hs, Ss
<i>Pusillina munda</i> (Monterosato, 1884)			R229				I,II	Ss
<i>Pusillina philippi</i> (Aradas & Maggiore, 1844)		R27	R59	R88		R223	I	Ss
<i>Pusillina radiata</i> (Philippi, 1836)	R151	R27	R59	R34		R223	I,II	Hs, Ss
<i>Pusillina sarsii</i> (Lovén, 1846)		R6					II,III	Ss
<i>Rissoa auriformis</i> Pallary, 1904			R59	R88			I	Ss
<i>Rissoa auriscalpium</i> (Linnaeus, 1758)			R130	R130		R223	I,II	Ss
<i>Rissoa decorata</i> Philippi, 1846			R130				I	Hs
<i>Rissoa guerinii</i> Récluz, 1843		R27	R130	PS		R223	I,II	Hs, Ss
<i>Rissoa lia</i> (Monterosato, 1884)			R130	R88			I	Hs, Ss
<i>Rissoa membranacea</i> (Adams, J., 1800)	R130	R6, R27	R41, R59	R130	R4, R7	R223	I,II	Hs, Ss
<i>Rissoa monodonta</i> Philippi, 1836		R6, R27	R2, R130	R130	R4	R10, R223	I,II	Ss
<i>Rissoa parva</i> (da Costa, 1778)	R80, R86	R6, R66	R130				I,II	Hs, Ss
<i>Rissoa rodhensis</i> Verduin, 1985			R64	R64			I	Hs, Ss
<i>Rissoa scurra</i> (Monterosato, 1917)			R59	R88			I	Ss
<i>Rissoa similis</i> Scacchi, 1836		R6, R27	R41, R59	R88	R4	R10, R223	I,II	Hs, Ss
<i>Rissoa splendida</i> Eichwald, 1830	R129	R6, R21	R41, R131	R130, R186	R4, R16	R10, R223	I,II	Hs, Ss
<i>Rissoa variabilis</i> (Megerle Von Mühlfeldt, 1824)			R10, R110	R88			I,II	Hs, Ss
<i>Rissoa ventricosa</i> Desmarest, 1814			R79	R130		R10, R223	I,II	Hs, Ss
<i>Rissoa violacea</i> Desmarest, 1814		R6	R110			R223	I,II	Ss
<i>Setia ambigua</i> (Brugnone, 1873)			R47				?	?
<i>Setia fusca</i> (Philippi, 1841)			R186	R210			I	Hs, Ss
<i>Setia turriculata</i> Monterosato, 1884			R47	R88			I	Hs, Ss
<i>Setia valvatooides</i> (Milaschewitsch, 1909)	R139	R27					I	Hs
* <i>Rissoina ambigua</i> (Gould, 1849)				R141			II	Ss
* <i>Rissoina bertholleti</i> Issel, 1869			R152	R61, R65			I	Ss
<i>Rissoina bruguieri</i> (Payraudeau, 1826)		R6, R27	R59	R88	R4		I,II	Hs, Ss



**Table 1.** (Continued).

<b>Anabathridae</b>							
<i>Nodulus contortus</i> (Jeffreys, 1856)			R183				I Hs
<i>Pisinna glabrata</i> (Megerle von Mühlfeld, 1824)			R130				I Hs
<b>Barleecidae</b>							
<i>Barleecia unifasciata</i> (Montagu, 1803)			R41, R130	R130			I Hs
<b>Caecidae</b>							
<i>Caecum armoricum</i> de Folin, 1869			R130	R88			I Hs, Ss
<i>Caecum auriculatum</i> de Folin, 1868	R6		R59	R88			I,II Hs, Ss
<i>Caecum clarkii</i> Carpenter, 1859			R103	R88			I Ss
* <i>Caecum sepimentum</i> de Folin, 1868				R237			II Ss
<i>Caecum subannulatum</i> de Folin, 1870		R197	R103				I-IV Hs, Ss
<i>Caecum trachea</i> (Montagu, 1803)	R130	R6, R27	R59	R88	R4	R223	I-V Hs, Ss
<i>Parastrophia asturiana</i> de Folin, 1870		R130	R103	R88			I,II Ss
<b>Elachisinidae</b>							
<i>Laeviphitus verduini</i> van Aartsen, Bogi & Giusti, 1989		R199					VII Ss
<b>Assimineidae</b>							
<i>Paludinella globularis</i> (Hanley in Thorpe, 1844)			R130	R88			I Hs
<b>Hydrobiidae</b>							
<i>Ecrobia ventrosa</i> (Montagu, 1803)	R73	R27	R130	R130	R4		I-IV Ss
<i>Heleobia stagnorum</i> (Gmelin, 1791)	R151						I Hs, Ss
<i>Hydrobia acuta</i> (Draparnaud, 1805)		R91		R88			I Ss
<i>Peringia ulvae</i> (Pennant, 1777)			R59				I Ss
<b>Iravadiidae</b>							
<i>Ceratia proxima</i> (Forbes & Hanley, 1850)		R6, R130	R130				II,III Ss
<i>Hyalia vitrea</i> (Montagu, 1803)		R6, R130	R130	R210		R223	I-III Ss
<b>Tornidae</b>							
<i>Circulus striatus</i> (Philippi, 1836)		R27	R130	R210			I Ss
<i>Tornus mienisi</i> van Aartsen, Carrozza & Menkhorst, 1998				R116			I Ss
<i>Tornus subcarinatus</i> (Montagu, 1803)		R6, R21	R59	R88		R10	I,II Ss
<b>Truncatellidae</b>							
<i>Truncatella subcylindrica</i> (Linnaeus, 1767)		R27, R16	R59	R88	R16	R10, R223	I,II Hs, Ss
<b>Vermetidae</b>							
* <i>Dendropoma petraeum</i> (Monterosato, 1884)		R6	R41, R78	R138			I Hs
<i>Petalonchus glomeratus</i> (Linnaeus, 1758)		R6	R130	R138			I,II Hs
<i>Thylacodes arenarius</i> (Linnaeus, 1758)			R10, R59	R12, R88		R10, R3	I-IV Hs
<i>Thylaeodus rugulosus</i> (Monterosato, 1878)			R130	R130			I-III Hs
<i>Thylaeodus semisurrectus</i> (Bivona-Bernardi, 1832)		R6		R2			II Ss
<i>Vermetus granulatus</i> (Gravenhorst, 1831)		R6	R186	R210			I Hs
<i>Vermetus triquetrus</i> Bivona-Bernardi, 1832		R6, R130	R41, R78	R88		R10	I Hs
<b>Strombidae</b>							
* <i>Conomurex persicus</i> (Swainson, 1821)			R64, R85	R44, R52			I,II Hs, Ss
<b>Aporrhaidae</b>							
<i>Aporrhais pespelecani</i> (Linnaeus, 1758)	R30	R5, R6	R32, R79	R2, R130		R7, R223	I-III Ss
<i>Aporrhais serresianus</i> (Michaud, 1828)		R6, R130	R130				II-VII Ss

**Table 1.** (Continued).

<b>Calyptraeidae</b>								
<i>Calyptraea chinensis</i> (Linnaeus, 1758)	R73, R80	R5, R6	R2, R130	R88	R4, R7	R3, R223	I-III	Ss
* <i>Crepidula fornicata</i> (Linnaeus, 1758)			R236				I,II	Ss
<i>Crepidula moulinsii</i> Michaud, 1829		R130	R130	PS		R223	I-III	Hs, Ss
<i>Crepidula unguiformis</i> Lamarck, 1822		R6, R16	R130	PS	R7		I,II	Hs, Ss
<b>Capulidae</b>								
<i>Capulus ungaricus</i> (Linnaeus, 1758)		R5, R6	R130	R130	R7		I-III	Hs, Ss
<b>Velutinidae</b>								
<i>Lamellaria latens</i> (Müller, O.F., 1776)			R229				I	Hs
<i>Lamellaria perspicua</i> (Linnaeus, 1758)			R130	R88			I	Ss
<b>Triviidae</b>								
<i>Erato voluta</i> (Montagu, 1803)		R6, R130	R110			R7, R223	II-IV	Ss
<i>Trivia arctica</i> (Pulteney, 1799)			R186				II-IV	Ss
<i>Trivia levantina</i> Smriglio, Mariottini & Buzzurro, 1998			R97	R88		R97	I,II	Hs, Ss
<i>Trivia monacha</i> (da Costa, 1778)			R2			R7	I-IV	Hs, Ss
<i>Trivia multilirata</i> (Sowerby G. B. II, 1870)			R130				III	Ss
<b>Cypraeidae</b>								
# <i>Erosaria spurca</i> (Linnaeus, 1758)			R59	R88	R7		I-III	Hs, Ss
# <i>Luria lurida</i> (Linnaeus, 1758)			R130	R12, R88			I,II	Hs
* <i>Purpuradusta gracilis notata</i> (Gill, 1858)				R43, R54			I	Hs, Ss
# <i>Zonaria pyrum</i> (Gmelin, 1791)			R3, R130	R130			II	Hs
<b>Ovulidae</b>								
<i>Pseudosimnia adriatica</i> (Sowerby, G.B. I, 1828)		R164	R130				II,III	Hs
<i>Pseudosimnia carnea</i> (Poirot, 1789)		R6, R130				R7	III	Hs
<i>Simnia spelta</i> (Linnaeus, 1758)			R135				II	Hs
<i>Simnia illyrica</i> (Schilder, 1927)			R135				II	Hs
<i>Xandarovula aperta</i> (Sowerby, GB. II, 1849)			R135				II	Hs
<b>Naticidae</b>								
* <i>Eunaticina papilla</i> Gmelin, 1791				R232			I	Ss
<i>Euspira fusca</i> (de Blainville, 1825)	R9, R14	R6, R27	R130		R4, R18	R7	III-VII	Ss
<i>Euspira guilleminii</i> (Payraudeau, 1826)	R130	R27	R130	R130		R223	I,II	Ss
<i>Euspira intricata</i> (Donovan, 1804)		R16, R130	R2, R10	R88	R4, R18	R223	I-IV	Hs, Ss
<i>Euspira macilenta</i> (Philippi, 1844)		R6						
<i>Euspira nitida</i> (Donovan, 1804)	R30	R5, R6	R2, R130	R2	R7, R10	R223	II-V	Ss
<i>Natica hebraea</i> (Martyn, 1786)			R59	R12, R88			I,II	Hs, Ss
<i>Natica stercusmuscarum</i> (Gmelin, 1791)	R130	R6, R7	R32, R130	R12, R88			II-V	Ss
<i>Neverita josephinia</i> Risso, 1826			R10, R59	R88		R10, R223	I-III	Ss
<i>Notocochlis dillwynii</i> (Payraudeau, 1826)			R59	R88		R223	I-III	Hs, Ss
<i>Tectonatica sagraiana</i> (d'Orbigny, 1842)		R7	R130	R130			II	Ss
<b>Tonnidae</b>								
# <i>Tonna galea</i> (Linnaeus, 1758)			R32, R59	R12, R88			II-V	Ss
<b>Cassidae</b>								
<i>Galeodea echinophora</i> (Linnaeus, 1758)		R6, R130	R130	R130		R3	II-VII	Ss
<i>Semicassis granulata</i> (Born, 1778)			R2, R59	R12, R88			I-III	Ss
<i>Semicassis saburon</i> (Brugière, 1792)			R142				?	?

**Table 1.** (Continued).

<b>Ranellidae</b>								
<i>Charonia variegata</i> (Lamarck, 1816)			R130	R88		I-III	Hs	
<i>Monoplex corrugatus</i> (Lamarck, 1816)			R142		R10	II-V	Hs	
<i>Monoplex parthenopeus</i> (Salis Marschlins, 1793)			R142			I-III	Hs	
# <i>Ranella olearium</i> (Linnaeus, 1758)			R123			V	Ss	
<i>Cabestana cutacea</i> (Linnaeus, 1767)			R142			?	?	
<b>Pterotracheidae</b>								
<i>Firoloida desmarestia</i> Lesueur, 1817			R174	R171		I-III	P	
<i>Pterotrachea coronata</i> Forsskål in Niebuhr, 1775	R6, R5			R173		I-III	P	
<i>Pterotrachea hippocampus</i> Philippi, 1836			R174	R171		-	P	
<b>Carinariidae</b>								
<i>Carinaria lamarckii</i> de Blainville, 1817				R2, R173		-	P	
<b>Atlantidae</b>								
<i>Atlanta brunnea</i> Gray, J. E., 1850				R130		-	P	
<i>Atlanta peronii</i> Lesueur, 1817	R6	R59, R130	R171			-	P	
<b>Muricidae</b>								
<i>Aspella anceps</i> (Lamarck, 1822)				R36, R85		I-III	?	
<i>Babelomurex cariniferus</i> (Sowerby, G. B. II, 1834)				R88		I	Ss	
<i>Bolinus brandaris</i> (Linnaeus, 1758)	R6, R7	R2, R32	R2, R88		R3, R223	I-IV	Hs, Ss	
<i>Coralliophila squamosa</i> (Bivona Ant. in Bivona, And., 1838)	R130	R130	R130	R130		?	?	
<i>Coralliophila meyendorffii</i> (Calcara, 1845)			R130	R88, R130		I	Ss	
<i>Dermomurex scalaroides</i> (de Blainville, 1829)			R130	R88		I-III	Hs	
* <i>Ergalatax junionae</i> Houart, 2008				R166, R192	R85, R185	I,II	Hs, Ss	
<i>Hadriana craticulata</i> Bucquoy, Dautzenberg & Dollfus, 1882	R130	R117, R130	R130		R7	I-IV	Ss	
<i>Hexaplex pecchiolianus</i> (d'Ancona, 1871)				R61, R94		I-III	Hs, Ss	
<i>Hexaplex trunculus</i> (Linnaeus, 1758)	R6, R27	R3, R32	R88		R10, R223	I-IV	Hs, Ss	
<i>Muricopsis aradasii</i> (Poirier, 1883)				R117		I-IV	Hs	
<i>Muricopsis cevikeri</i> Houart, 2000			R106, R117	R106, R117		I,II	Hs, Ss	
<i>Muricopsis cristata</i> (Brocchi, 1814)	R6, R27	R3, R78	R88		R7, R10	I-IV	Hs	
<i>Ocenebra erinaceus</i> (Linnaeus, 1758)	R14, R30	R16, R19	R41, R117	R130, R186	R4, R7	R7	I-IV	Hs, Ss
<i>Ocenebrina aciculata</i> (Lamarck, 1822)		R27	R2, R120	R88	R7	R10, R223	I-IV	Hs, Ss
<i>Ocenebrina edwardsii</i> (Payraudeau, 1826)		R6, R27	R41, R79	R88	R7	R10, R223	I	Hs
<i>Orania fusulus</i> (Brocchi, 1814)				R117			I-IV	Ss
* <i>Rapana venosa</i> (Valenciennes, 1846)	R20	R89	R85		R89		I	Hs, Ss
<i>Stramonita haemastoma</i> (Linnaeus, 1767)			R117	R12, R88			I,II	Hs
* <i>Thaisella lacera</i> (Born, 1778)				R65, R85			I,II	Ss
<i>Trophonopsis breviata</i> (Jeffreys, 1882)	R28, R80	R6	R132		R4, R7		I-IV	Ss
<i>Trophonopsis muricata</i> (Montagu, 1803)	R14, R28	R6, R117	R117		R18	R223	II-V	Ss
<i>Typhinellus labiatus</i> (de Cristofori & Jan, 1832)		R7, R117	R117	R88			I-III	Hs, Ss
<b>Marginellidae</b>								
<i>Granulina marginata</i> (Bivona, Ant., 1832)		R6	R59	R88		R223	I-III	Hs, Ss
<i>Granulina occulta</i> (Monterosato, 1869)			R130	R186			II-IV	Hs, Ss

**Table 1.** (Continued).

<i>Volvarina mitrella</i> (Risso, 1826)		R130	R88			I	Ss	
<b>Cystiscidae</b>								
<i>Gibberula miliaria</i> (Linnaeus, 1758)		R41, R130			R223	I	Hs, Ss	
<i>Gibberula philippii</i> (Monterosato, 1878)		R59	R88			I	Ss, Hs	
<b>Mitridae</b>								
<i>Mitra cornea</i> Lamarck, 1811		R142				?	?	
<i>Mitra cornicula</i> (Linnaeus, 1758)		R130	R88			I	Hs, Ss	
<b>Costellariidae</b>								
<i>Vexillum ebenus</i> (Lamarck, 1811)	R27	R2, R10	R88		R223	I-IV	Hs, Ss	
<i>Vexillum granum</i> (Forbes, 1844)	R6, R27	R2, R59	R88		R10	I-V	Hs, Ss	
<i>Vexillum hypatiae</i> (Pallary, 1912)			R210			I	Ss	
<i>Vexillum savignyi</i> (Payraudeau, 1826)		R130	R130			?	?	
<i>Vexillum tricolor</i> (Gmelin, 1791)	R27	R130	R130			I,II	Hs, Ss	
<b>Buccinidae</b>								
<i>Chauvetia brunnea</i> (Donovan, 1804)	R130	R130	R130			I-III	Ss	
<i>Chauvetia mamillata</i> (Risso, 1826)		R130			R223	II	Hs, Ss	
<i>Chauvetia turritellata</i> (Deshayes, 1835)		R119	R102			I,II	Ss	
<i>Colubraria reticulata</i> (de Blainville, 1826)			R88			I	Ss	
<i>Engina leucozona</i> (Philippi, 1844)		R120	R2, R88		R10, R223	I,II	Hs, Ss	
<i>Euthria cornea</i> (Linnaeus, 1758)		R3, R120	R88		R6, R7	I-III	Hs, Ss	
<i>Pisania striata</i> (Gmelin, 1791)	R27	R10, R41	R88		R10	I	Hs, Ss	
<i>Pollia dorbignyi</i> (Payraudeau, 1826)		R120	R88		R223	I,II	Hs, Ss	
<i>Pollia scabra</i> Locard, 1892		R120	R88			I,II	Hs, Ss	
<i>Pollia scacchiana</i> (Philippi, 1844)		R120	R88			I	Hs, Ss	
<b>Nassariidae</b>								
<i>Cyclope neritea</i> (Linnaeus, 1758)	R14, R28	R6, R21	R10, R120	R4, R18	R10, R7	I,II	Hs, Ss	
<i>Cyclope pellucida</i> Risso, 1826	R130	R130	R130	R130		I,II	Ss	
<i>Nassarius circumcinctus</i> (Adams, A., 1852)			R12, R54			I	Ss	
<i>Nassarius corniculum</i> (Olivi, 1792)		R7	R130	R88		I	Ss	
<i>Nassarius cuvierii</i> (Payraudeau, 1826)		R2, R10	R12, R88		R10, R223	I,II	Hs, Ss	
<i>Nassarius gibbosulus</i> (Linnaeus, 1758)		R59	R12, R52			I	Ss	
<i>Nassarius incrassatus</i> (Stroem, 1768)	R14, R129	R6, R27	R2, R41	R2, R88	R4, R7	R223	I-III	Hs, Ss
<i>Nassarius lima</i> (Dillwyn, 1817)			R41, R120	R130			III,IV	Hs, Ss
<i>Nassarius louisi</i> (Pallary, 1912)				R88			I	Ss
<i>Nassarius mutabilis</i> (Linnaeus, 1758)			R10, R59	R12, R88			I,II	Ss
<i>Nassarius nitidus</i> (Jeffreys, 1867)				R12, R221	R10, R223		I-III	Hs, Ss
<i>Nassarius pygmaeus</i> (Lamarck, 1822)		R6, R27	R130	R88	R7	R223	I-III	Hs, Ss
<i>Nassarius reticulatus</i> (Linnaeus, 1758)	R14, R30	R1, R6	R120	R12, R130	R4, R7	R10	I-III	Hs, Ss
<i>Nassarius turulosus</i> (Risso, 1826)			R130				?	?
<b>Columbellidae</b>								
<i>Columbella rustica</i> (Linnaeus, 1758)		R27	R59	R88		R10	I	Hs, Ss
<i>Mitrella gervillii</i> (Payraudeau, 1826)		R130	R130	R130			I,II	Hs, Ss
<i>Mitrella minor</i> (Scacchi, 1836)			R130	R88			II,III	Ss
<i>Mitrella scripta</i> (Linnaeus, 1758)	R30	R67	R10, R131	R88	R18, R27		I-III	Hs, Ss
* <i>Zafra savignyi</i> (Moazzo, 1939)				R64			I,II	Hs, Ss
* <i>Zafra selasphora</i> (Melvil & Standen, 1901)				R75			I,II	Hs, Ss

**Table 1.** (Continued).

<b>Fasciolariidae</b>								
<i>Fusinus alternatus</i> Buzzurro & Russo, 2007			R176			II,III	Ss	
<i>Fusinus parvulus</i> (Monterosato, 1884)			R229			II	Ss	
<i>Fusinus pulchellus</i> (Philippi, 1844)	R6, R7	R120	R130		R7, R223	I-III	Ss	
<i>Fusinus rostratus</i> (Olivi, 1792)	R19, R130	R32, R120	R130			II-VII	Hs, Ss	
<i>Fusinus syracusanus</i> (Linnaeus, 1758)		R96, R120	R88		R3	I-III	Hs, Ss	
<i>Tarantinaea lignaria</i> (Linnaeus, 1758)		R79, R120	R88			I	Hs	
<b>Conidae</b>								
<i>Conus ventricosus</i> Gmelin, 1791	R6, R27	R32, R41	R2, R12			I-III	Hs, Ss	
<b>Drilliidae</b>								
<i>Crassopleura maravignae</i> (Bivona Ant. in Bivona And., 1838)	R130	R118	R88	R4		II,III	Ss	
<b>Horaiclavidae</b>								
<i>Haedropleura secalina</i> (Philippi, 1844)		R59	R130			II	Ss	
<i>Haedropleura septangularis</i> (Montagu, 1803)	R21, R130	R10, R130	R130		R10	I,II	Ss	
<b>Borsoniidae</b>								
<i>Drilliola loprestiana</i> (Calcara, 1841)		R130	R130			III,IV	Ss	
<b>Clathurellidae</b>								
<i>Comarondia gracilis</i> (Montagu, 1803)	R6	R118	R130		R7, R223	II-IV	Ss	
<i>Clathromangelia granum</i> (Philippi, 1844)		R130	R88			I-IV	Ss	
<i>Clathromangelia strigilata</i> Pallary, 1904		R130				?	?	
* <i>Lienardia mighelsi</i> Iredale & Tomlin, 1917		R132				III	Ss	
<b>Mitromorphidae</b>								
<i>Mitromorpha olivoidea</i> (Cantraine, 1835)	R130	R118	R88			I,II	Ss	
<b>Mangeliidae</b>								
<i>Bela brachystoma</i> (Philippi, 1844)	R6, R130	R118	R88	R4, R7	R223	I-III	Ss	
<i>Bela cycladensis</i> (Reeve, 1845)		R130	R130		R223	II	Ss	
<i>Bela fuscata</i> (Deshayes, 1835)	R6				R223	II	Ss	
<i>Bela menkhorsti</i> van Aartsen, 1988		R130	R130		R223	I-IV	Ss	
<i>Bela nebula</i> (Montagu, 1803)	R130	R6, R7	R118	R88	R4	R223	I-III	Hs, Ss
<i>Bela taprurensis</i> (Pallary, 1904)		R59	R88		R223	I,II	Ss	
<i>Bela zenetouae</i> (van Aartsen, 1988)		R186	PS		R223	I,II	Ss	
<i>Bela zonata</i> (Locard, 1892)		R10, R118	R88		R10, R223	I,II	Ss	
<i>Benthomangelia macra</i> (Watson, 1881)			R218			VII	Ss	
<i>Mangelia attenuata</i> (Montagu, 1803)	R6, R7	R118	R130	R4, R7	R223	I-III	Ss	
<i>Mangelia barashi</i> (van Aartsen & Fehr de Wal, 1978)			R40		R223	I	Ss	
<i>Mangelia brusinae</i> van Aartsen & Fehr-de Wal, 1978	R40		R186		R223	II	Ss	
<i>Mangelia costata</i> (Pennant, 1777)	R6, R130	R130	R186		R223	II-V	Ss	
<i>Mangelia costulata</i> Risso, 1826	R6, R7	R59	R88	R7	R223	I-III	Ss	
<i>Mangelia fieldeni</i> (van Aartsen & Fehr de Wal, 1978)			R88			I	Ss	
<i>Mangelia melitensis</i> Cachia & Mifsud, 2008					R223	I,II	Ss	
<i>Mangelia multilineolata</i> (Deshayes, 1835)	R130	R130	R130	R4		I	Ss	
<i>Mangelia nuperrima</i> (Tiberi, 1855)	R6, R130	R130			R223	I-VII	Ss	
<i>Mangelia paciniana</i> (Calcara, 1839)	R130	R130	R130		R223	I,II	Hs, Ss	
<i>Mangelia pontica</i> Milaschewitsch, 1908	R130	R27				I	Ss	

**Table 1.** (Continued).

<i>Mangelia scabrida</i> Monterosato, 1890	R6, R130	R130	R88		R223	I,II	Ss
<i>Mangelia sicula</i> Reeve, 1846			R88		R223	I,II	Ss
<i>Mangelia stosiciana</i> Brusina, 1869	R5, R130	R130	R130		R223	II	Ss
<i>Mangelia striolata</i> Risso, 1826		R59			R223	I,II	Ss
<i>Mangelia taeniata</i> (Deshayes, 1835)		R118	R130	R4		I	Hs
<i>Mangelia unifasciata</i> (Deshayes, 1835)	R6, R27	R59	R88		R223	I-III	Hs, Ss
<i>Mangelia vauquelini</i> (Payraudeau, 1826)	R21, R27	R59	R88			I	Ss
* <i>Pseudorhaphitoma iodolabiata</i> (Hornung & Mermod, 1928)			R217,R231			II	Ss
<b>Raphitomidae</b>							
<i>Raphitoma aequalis</i> (Jeffreys, 1867)	R6	R186			R223	II,III	Ss
<i>Raphitoma alternans</i> (Monterosato, 1884)	R130	R130			R10	II	Ss
<i>Raphitoma atropurpurea</i> (Locard & Caziot, 1900)		R183				II	Ss
<i>Raphitoma concinna</i> (Scacchi, 1836)	R130	R130	R210			II	Ss
<i>Raphitoma cordieri</i> (Payraudeau, 1826)	R6				R10	II	Ss
<i>Raphitoma echinata</i> (Brocchi, 1814)	R130	R118	R4, R130			I-III	Hs, Ss
<i>Raphitoma histrix</i> Bellardi, 1847		R229	R130			II	Ss
<i>Raphitoma horrida</i> (Monterosato, 1884)		R118				I-III	Ss
<i>Raphitoma leufroyi</i> (Michaud, 1828)	R130	R130	R130			I	Ss
<i>Raphitoma linearis</i> (Montagu, 1803)		R118	R88		R223	I-III	Ss
<i>Raphitoma lineolata</i> (Bucquoy, Dautzenberg & Dollfus, 1883)		R130	R227			I,II	Ss
<i>Raphitoma mirabilis</i> (Pallary, 1904)		R130	R130			?	?
<i>Raphitoma papillosa</i> (Pallary, 1904)	R130	R130				?	?
<i>Raphitoma philberti</i> (Michaud, 1829)	R130	R10, R130		R7	R10	I,II	Ss
<i>Raphitoma pruinosa</i> (Pallary, 1906)	R130					?	?
<i>Raphitoma pupoides</i> (Monterosato, 1884)				R7		?	?
<i>Raphitoma purpurea</i> (Montagu, 1803)	R49, R27	R118	R88	R4, R7		I-III	Hs, Ss
<i>Raphitoma smriglioi</i> Pusateri & Giannuzzi-Savelli, 2013		R227				II	Ss
<i>Teretia teres</i> (Reeve, 1844)	R6, R130	R130				II-V	Ss
<b>Architectonicidae</b>							
<i>Discotectonica discus</i> (Philippi, 1844)		R130				IV-VI	Ss
<i>Heliacus fallaciosus</i> (Tiberi, 1872)	R6, R130					IV,V	Ss
<i>Pseudotorinia architae</i> (Costa, O.G., 1841)	R130	R130				II-VI	Ss
<b>Mathildidae</b>							
<i>Mathilda gemmulata</i> Semper, 1865		R183	R88			I-IV	Ss
<b>Omalogyridae</b>							
<i>Ammonicera fischeriana</i> (Monterosato, 1869)	R139	R27	R238	R88		I-III	Hs, Ss
<i>Ammonicera rota</i> (Forbes & Hanley, 1850)			R59			II-IV	Ss
<i>Omalogyra atomus</i> (Philippi, 1841)		R27	R59	R88		I,II	Ss
<i>Omalogyra simplex</i> (Costa, O. G., 1861)				R88		I-IV	Ss
<b>Cornirostridae</b>							
<i>Tomura depressa</i> (Granata-Grillo, 1877)		R45	R88			I,II	Ss
<b>Hyalogyrinidae</b>							
<i>Xenoskenea pellucida</i> (Monterosato, 1874)		R238	R88			I,II	Ss

**Table 1.** (Continued).

**Pyramidellidae**

<i>Careliopsis cf. modesta</i> (de Folin, 1870)				R71		I	Pz
<i>Chrysallida emaciata</i> (Brusina, 1866)	R99	R27	R130	R71	R223	I-III	Pz
<i>Chrysallida excavata</i> (Philippi, 1836)		R6, R27	R130	R88	R223	I-III	Pz
<i>Chrysallida fenestrata</i> (Jeffreys, 1848)	R207	R27	R71	R71		I-III	Pz
* <i>Chrysallida fischeri</i> (Hornung & Mermod, 1925)				R71		I,II	Pz
<i>Chrysallida ghisottii</i> (van Aartsen, 1984)				R88		I-V	Pz
<i>Chrysallida incerta</i> (Milaschewitsch, 1916)	R99	R21	R130	R71		I-III	Pz
<i>Chrysallida intermixta</i> (Monterosato, 1884)		R6	R207	R70		I,II	Pz
<i>Chrysallida interstincta</i> (Adams, J., 1797)	R99	R6, R27	R59	R71	R223	I-VII	Pz
<i>Chrysallida limitum</i> (Brusina in de Folin & Périer, 1876)				R70		I	Pz
* <i>Chrysallida maiae</i> (Hornung & Mermod, 1924)				R37, R64		I,II	Pz
* <i>Chrysallida micronana</i> Öztürk & van Aartsen, 2006			R168	R168		I,II	Pz
* <i>Chrysallida pirinthella</i> (Melvill, 1910)				R71		I	Pz
<i>Chrysallida stefanisi</i> (Jeffreys, 1869)				R207		III-VII	Pz
<i>Chrysallida terebellum</i> (Philippi, 1844)	R130	R99	R130	R207		I-III	Pz
* <i>Cingulina isseli</i> (Tryon, 1886)				R56		I	Hs
<i>Eulimella acicula</i> (Philippi, 1836)	R99	R6, R27	R59	R71	R4	I-VI	Pz
<i>Eulimella bogii</i> van Aartsen, 1995				R88		I-VI	Pz
<i>Eulimella neoattenuata</i> Gagliani, 1992			R230			II-VII	Pz
<i>Eulimella scillae</i> (Scacchi, 1835)		R6	R230			III-VI	Pz
<i>Eulimella unifasciata</i> (Forbes, 1844)			R2, R230	R2		III-VII	Pz
<i>Eulimella ventricosa</i> (Forbes, 1844)		R6, R130	R130	R2, R210		III-VII	Pz
<i>Euparthenia bulinea</i> (Lowe, 1841)		R6, R130	R130			III,IV	Pz
<i>Euparthenia humboldti</i> (Risso, 1826)		R130	R130	R71		I-III	Pz
* <i>Iolaea neofelixoides</i> (Nomura, 1936)				R93		I	Pz
<i>Liostomia afzelii</i> Warén, 1991			R226	R226		II-IV	Pz
<i>Liostomia clavula</i> (Lovén, 1846)			R130	R226		II-IV	Pz
<i>Marginodostomia improbabilis</i> (Oberling, 1970)			R226	R210		I,II	Pz
<i>Megastomia conoidea</i> (Brocchi, 1814)		R6, R27	R71	R71	R223	I-IV	Pz
<i>Megastomia conspicua</i> (Alder, 1850)			R226	R71		I-III	Pz
* <i>Monotygma fulva</i> (Adams, A., 1853)			R190			II	Pz
* <i>Monotygma lauta</i> (Adams, A., 1853)			PS	R71, R74		I,II	Pz
<i>Noemiamea dolioliformis</i> (Jeffreys, 1848)		R27		R71		I	Pz
<i>Odetta zekiengeni</i> Öztürk, 2013			R225			I	Pz
<i>Odostomella bicincta</i> (Tiberi, 1868)			R238			II-VI	Pz
<i>Odostomella doliolum</i> (Philippi, 1844)		R130	R130	R71		I-VII	Pz
<i>Odostomia acuta</i> Jeffreys, 1848		R6, R99	R130	R71	R223	I-III	Pz
<i>Odostomia angusta</i> Jeffreys, 1867			R226			II,III	Pz
<i>Odostomia barashi</i> Bogi & Galil, 2000			R226	R168		I	Pz
<i>Odostomia carrozzai</i> van Aartsen, 1987			R226			II,III	Pz

**Table 1.** (Continued).

<i>Odostomia erjaveciana</i> Brusina, 1869	R99	R27	R59	R71		I,II	Pz
<i>Odostomia eulimoides</i> Hanley, 1844	R99	R6, R99	R130		R223	II,III	Pz
<i>Odostomia kromi</i> van Aartsen, Menkhorst & Gittenberger, 1984			R226	R64, R88		I,II	Pz
* <i>Odostomia lorioli</i> (Hornung & Mermod, 1924)			R226	R178		I,II	Pz
<i>Odostomia lukisii</i> Jeffreys, 1859			R226	R71		I-III	Pz
<i>Odostomia megerlei</i> (Locard, 1886)				R226		II	Pz
<i>Odostomia plicata</i> (Montagu, 1803)	R99	R6, R27		R71	R223	I,II	Pz
<i>Odostomia scalaris</i> MacGillivray, 1843	R73	R6, R99	R130	R71	R223	I-IV	Pz
<i>Odostomia sicula</i> Philippi, 1851				R71		II	Pz
<i>Odostomia silesui</i> Nofroni, 1988			R226			VII	Pz
<i>Odostomia striolata</i> Forbes & Hanley, 1850			R130	R71	R223	I-IV	Pz
<i>Odostomia turriculata</i> Monterosato, 1869				R88		I,II	Pz
<i>Odostomia turrita</i> Hanley, 1844		R6, R238	R226	R71		I-III	Pz
<i>Odostomia unidentata</i> (Montagu, 1803)		R6, R91	R226	R226		I-III	Pz
<i>Ondina anceps</i> Gagliani, 1992			R226			II	Pz
<i>Ondina crystallina</i> Locard, 1892			R226			II,III	Pz
<i>Ondina diaphana</i> (Jeffreys, 1848)			R226	R88		I-III	Pz
<i>Ondina obliqua</i> (Alder, 1844)				R88		I,II	Pz
<i>Ondina vitrea</i> (Brusina, 1866)			R71	R71		I-III	Pz
<i>Ondina warreni</i> (Thompson, 1845)		R130	R130	R71		I-III	Pz
<i>Oscilla galilae</i> Bogi, Karhan & Yokeş, 2012				R211,R238		I	Pz
<i>Parthenina alesii</i> Micali, Nofroni & Perna, 2012				R215,R238		I	Pz
<i>Parthenina clathrata</i> (Jeffreys, 1848)		R6, R130	R130	R71		I-III	Pz
<i>Parthenina decussata</i> (Montagu, 1803)			R207	R88		I,II	Pz
<i>Parthenina dollfusi</i> (Kobelt, 1903)			R132	R207		I-III	Pz
<i>Parthenina flexuosa</i> (Monterosato, 1874)		R238	R207			IV-VII	Pz
<i>Parthenina indistincta</i> (Montagu, 1808)		R6, R27	R207	R71		I-III	Pz
<i>Parthenina juliae</i> (de Folin, 1872)			R59	R70		I-III	Pz
<i>Parthenina palazzii</i> (Micali, 1984)			R207	R207		II,III	Pz
<i>Parthenina suturalis</i> (Philippi, 1844)		R6, R238	R207	R71	R223	I-III	Pz
* <i>Syrnola cinctella</i> A. Adams, 1860				R93		I	Pz
* <i>Syrnola fasciata</i> Jickeli, 1882			R167	R56		I,II	Pz
* <i>Syrnola lendix</i> (Adams, A., 1863)				R71		I,II	Pz
<i>Syrnola minuta</i> Adams, H., 1869			R230			II-VI	Pz
<i>Tiberia minuscula</i> (Monterosato, 1880)			R183			IV	Pz
<i>Trabecula jeffreysiana</i> Monterosato, 1884			R207	R71		I-IV	Pz
<i>Turbonilla acuta</i> (Donovan, 1804)	R99	R6, R27	R130	R71	R223	I-III	Pz
<i>Turbonilla acutissima</i> Monterosato, 1884		R230	R230	R210		I-III	Pz
* <i>Turbonilla edgarii</i> (Melvill, 1896)				R68, R71		I	Pz
<i>Turbonilla hamata</i> Nordsieck, 1972				R88		I,II	Pz
<i>Turbonilla jeffreysii</i> (Jeffreys, 1848)		R130	R130	R88		I-III	Pz
<i>Turbonilla lactea</i> (Linnaeus, 1758)		R6, R238	R2, R230		R4 R223	I-III	Pz
<i>Turbonilla micans</i> (Monterosato, 1875)		R238	R230			V-VII	Pz



**Table 1.** (Continued).

<i>Turbonilla paucistriata</i> (Jeffreys, 1844)			R230	R230			IV-VII	Pz
<i>Turbonilla pseudogradata</i> Nordsieck, 1972		R230	R230	R230			I-III	Pz
<i>Turbonilla pumila</i> Seguenza, G., 1876			R230	R88			I,II	Pz
<i>Turbonilla pusilla</i> (Philippi, 1844)	R99	R5, R238	R59	R71	R4	R223	I,II	Pz
<i>Turbonilla rufa</i> (Philippi, 1836)		R6, R27	R71	R2, R71		R223	I-V	Pz
<i>Turbonilla striatula</i> (Linnaeus, 1758)			R59	R71		R223	I,II	Pz
<b>Amathinidae</b>								
* <i>Amathina tricarinata</i> (Linnaeus, 1767)				R163			I,II	Hs
<i>Clathrella clathrata</i> (Philippi, 1844)		R130	R130	R88			II-IV	Hs
* <i>Leucotina</i> cf. <i>eva</i> Thiele, 1925			R186	R116			I,II	Ss
* <i>Leucotina natalensis</i> Smith, E.A., 1910				R71, R160			I,II	Pz
<b>Murchisonellidae</b>								
<i>Ebala gradata</i> (Monterosato, 1878)			R230	R88			I,II	Ss
<i>Ebala nitidissima</i> (Montagu, 1803)		R27	R230	R88			I-IV	Ss
<i>Ebala pointeli</i> (de Folin, 1868)	R6	R6	R59	R71			I-III	Hs, Ss
<i>Ebala striatula</i> (Jeffreys, 1856)			R230	R88			I-III	Ss
<i>Murchisonella mediterranea</i> Peñas & Rolán, 2013				R83, R233			I,II	Hs, Ss
<b>Graphididae</b>								
<i>Graphis albida</i> (Kanmacher, 1798)			R183	R88			I-IV	Ss
<i>Graphis barashi</i> van Aartsen, 2002				R121			I	Ss
<b>Acteonidae</b>								
<i>Acteon monterosatoi</i> Dautzenberg, 1889				R238			III-VII	Ss
<i>Acteon tornatilis</i> (Linnaeus, 1758)	R28, R194	R6, R27	R59	R12, R88	R4	R194	I-V	Hs, Ss
<i>Crenilabium exile</i> (Jeffreys, 1870)				R238			V-VII	Ss
<i>Japonactaeon pusillus</i> (MacGillivray, 1843)			R183	R2, R221			III-VII	Ss
<b>Ringiculidae</b>								
<i>Ringicula auriculata</i> (Ménard de la Groye, 1811)		R5, R238	R2, R59	R88		R223	I,II	Ss
<i>Ringicula conformis</i> Monterosato, 1877		R6, R130	R130	R88		R223	II-VI	Hs, Ss
<b>Bullidae</b>								
* <i>Bulla arabica</i> Malaquias & Reid, 2008				R148			II	Ss
<i>Bulla striata</i> Brugière, 1792			R59	R23, R88			I,II	Ss
<b>Haminoeidae</b>								
<i>Atys jeffreysi</i> (Weinkauff, 1866)		R130	R59	R88		R223	I,II	Ss
* <i>Atys macandrewi</i> Smith, E. A., 1872				R159			I-III	Ss
* <i>Haminoea cyanomarginata</i> Heller & Thompson, T., 1983			R148	R148			I-III	Hs
<i>Haminoea hydatis</i> (Linnaeus, 1758)		R6, R130	R130	R2, R23			II	Hs, Ss
<i>Haminoea navicula</i> (da Costa, 1778)		R6, R27	R59			R223	I,II	Ss
<i>Weinkauffia turgidula</i> (Forbes, 1844)		R6	R59	R88			I,II	Ss
<b>Philineidae</b>								
<i>Philine catena</i> (Montagu, 1803)		R27	R59	R88		R223	I,II	Ss
<i>Philine monterosati</i> Monterosato, 1874		R6	R130				?	?
<i>Philine quadrata</i> (Wood, S., 1839)		R6					IV	Ss
<i>Philine quadripartita</i> Ascanius, 1772	R28, R30	R6, R16	R41, R150	R23, R88	R4, R7	R194	I-III	Hs, Ss
<i>Philine scabra</i> (Müller, O.F., 1784)		R6, R130	R130				VII	Ss

**Table 1.** (Continued).

<b>Aglajidae</b>							
<i>Aglaja tricolorata</i> Renier, 1807			R166	R195			I Hs
* <i>Chelidonura fulvipunctata</i> Baba, 1938			R166	R23, R220			I,II Hs, Ss
<i>Philinopsis depicta</i> (Renier, 1807)			R142	R195			I,II Ss
<b>Cylichnidae</b>							
* <i>Acteocina crithodes</i> Melvill & Standen, 1907				R141, R220			II Ss
* <i>Acteocina mucronata</i> (Philippi, 1849)				R60, R68			I Ss
<i>Cylichna cylindracea</i> (Pennant, 1777)	R30, R194	R6, R130	R130	R194	R18	R194	II,III Ss
<b>Scaphandridae</b>							
<i>Roxania utriculus</i> (Brocchi, 1814)		R6, R130	R130		R4		III Ss
<i>Scaphander lignarius</i> (Linnaeus, 1758)		R16, R130	R130				II-VII Ss
<b>Gastropteridae</b>							
<i>Gastropteron rubrum</i> (Rafinesque, 1814)		R6, R16	R3, R166	R23		R3	I-III Ss
<b>Retusidae</b>							
* <i>Cylichnina girardi</i> (Audouin, 1826)			R88	R60, R85			I Hs
<i>Cylichnina laevisculpta</i> (Granata-Grillo, 1877)			R229			R223	II Ss
<i>Cylichnina nitidula</i> (Lowén, 1846)				R221			I Ss
<i>Cylichnina umbilicata</i> (Montagu, 1803)	R80	R6, R27	R59	R88	R4	R223	I,II Hs, Ss
* <i>Pyrunculus fourierii</i> (Audouin, 1826)				R56, R68			I,II Hs, Ss
<i>Pyrunculus hoernesii</i> (Weinkauff, 1866)		R194	R87	R88		R194	I,II Ss
<i>Retusa leptoneilema</i> (Brusina, 1866)			R229				? ?
<i>Retusa mammillata</i> (Philippi, 1836)		R6, R23	R2, R59	R23, R88	R4		I,II Ss
<i>Retusa minutissima</i> (Monterosato, 1878)		R6	R222	R88, R210			I,II Ss
<i>Retusa pellucida</i> (Sars G. O., 1878)						R195	Ss
<i>Retusa truncatula</i> (Bruguière, 1792)	R73	R6, R21	R2, R59	R23, R88	R4	R223	I-III Ss
<i>Volvulella acuminata</i> (Bruguière, 1792)		R130	R59	R88			I Ss
<b>Cavoliniidae</b>							
<i>Cavolinia gibbosa</i> (d'Orbigny, 1834)			R174	R2			I,II P
<i>Cavolinia inflexa</i> (Lesueur, 1813)			R174	R2			I,II P
<i>Cavolinia tridentata</i> (Forsskål, 1775)		R6		R2, R171			I,II P
<i>Cavolinia uncinata</i> (d'Orbigny, 1834)				R195			I-VII P
<b>Cliidae</b>							
<i>Clio pyramidata</i> Linnaeus, 1767			R59	R2, R171			I-VII P
<b>Limacinidae</b>							
<i>Heliconoides inflatus</i> (d'Orbigny, 1834)			R174	R195			I-IV P
<i>Limacina retroversa</i> (Fleming, 1823)				R88			I P
<i>Limacina trochiformis</i> (d'Orbigny, 1836)			R174	R171			I-IV P
<b>Creseidae</b>							
<i>Creseis acicula</i> Rang, 1828		R6, R27	R124, R142	R2, R171			II P
<i>Creseis virgula</i> Rang, 1828		R6		R171			II P
<i>Hyalocylis striata</i> (Rang, 1828)			R174	R2			I,II P
<i>Styliola subula</i> (Quoy & Gaimard, 1827)				R2, R88			I P
<b>Cymbuliidae</b>							
<i>Corolla spectabilis</i> Dall, 1871				R171			I P
<i>Cymbulia peronii</i> de Blainville, 1818			R140				III P
<b>Peraclidae</b>							
<i>Peraclis reticulata</i> (d'Orbigny, 1836)				R2			V Ss

**Table 1.** (Continued).

<b>Oxynoidae</b>					
<i>Lobiger serradifalci</i> (Calcara, 1840)			R195	R23, R195	I Ss
<i>Oxynoe olivacea</i> Rafinesque, 1814			R59	R195	I Hs
* <i>Oxynoe viridis</i> (Pease, 1861)				R148	I Hs
<b>Volvatellidae</b>					
<i>Ascobulla fragilis</i> (Jeffreys, 1856)			R195	R183	II Hs, Ss
<b>Plakobranchidae</b>					
<i>Elysia flava</i> Verrill, 1901			R166		I Hs
* <i>Elysia grandifolia</i> Kelaart, 1857				R148	I Hs
<i>Elysia timida</i> (Risso, 1818)			R142	R23, R195	I Hs
* <i>Elysia tomentosa</i> Jensen, 1997			R142	R148	I,II Hs
<i>Elysia viridis</i> (Montagu, 1804)	R16, R205		R166	R138	I Hs, Ss
<i>Thuridilla hopei</i> (Vérany, 1853)			R142	R23, R195	I Hs, Ss
<b>Bosellidae</b>					
<i>Bosellia mimetica</i> Trinchese, 1891			R41		I Hs
<b>Caliphyllidae</b>					
<i>Cyerce cristallina</i> (Trinchese, 1881)				R23	I Hs
<b>Limapontiidae</b>					
<i>Limapontia capitata</i> (Müller, O.F., 1774)	R23	R16		R16	I Ss
<b>Umbraculidae</b>					
<i>Spirisella unguiculus</i> Rang, 1828				R88	I Ss
<i>Umbraculum umbraculum</i> (Lightfoot, 1786)		R16, R130	R59	R23, R88	I,II Hs,Ss
<b>Tylodiniidae</b>					
<i>Tylodina perversa</i> (Gmelin, 1791)			R130	R194	I,II Hs,Ss
<b>Hedylopsidae</b>					
<i>Hedylopsis spiculifera</i> (Kowalewsky, 1901)	R30				I,II Ss
<b>Akeridae</b>					
<i>Akera bullata</i> Müller, O.F., 1776		R130	R130		I-III Ss
<b>Aplysiidae</b>					
* <i>Aplysia dactylomela</i> Rang, 1828				R172	I Hs
<i>Aplysia depilans</i> Gmelin, 1791	R24, R30	R6	R195	R23, R88	I,II Hs, Ss
<i>Aplysia fasciata</i> (Poiret, 1789)			R142	R195	I Hs
* <i>Aplysia parvula</i> Mörch, 1863		R23	R142, R194	R23 R194	I Hs
<i>Aplysia punctata</i> (Cuvier, 1803)		R16, R23	R32, R41	R23 R195	I,II Hs
* <i>Bursatella leachii</i> de Blainville, 1817			R23, R142	R23, R61	I,II Ss
* <i>Notarchus punctatus</i> Philippi, 1836			R142	R195	I Hs
<i>Petalifera petalifera</i> Rang, 1828			R219	R195	I Hs
* <i>Syphonota geographica</i> (Adams, A. & Reeve, 1850)				R148	I,II Hs
<b>Pleurobranchidae</b>					
<i>Berthella aurantica</i> (Risso, 1818)	R16	R229	R88		I Hs, Ss
<i>Berthella ocellata</i> (Delle Chiaje, 1830)			R195		I Hs
<i>Berthella plumula</i> (Montagu, 1803)	R6		R88		II Ss
<i>Berthella stellata</i> (Risso, 1826)			R166	R195	I Hs
<i>Berthellina edwardsi</i> (Vayssièrè, 1896)			R195	R195	I Hs
<i>Pleurobranchus membranaceus</i> (Montagu, 1815)	R66			R4	II Hs
<i>Pleurobranchus testudinarius</i> Cantraine, 1835			R142	R194	I,II Hs, Ss

**Table 1.** (Continued).

<b>Pleurobranchaeidae</b>						
<i>Pleurobranchaea meckeli</i> (de Blainville, 1825)	R16	R142		I,II	Hs, Ss	
<b>Dorididae</b>						
<i>Doris bertheloti</i> (d'Orbigny, 1839)		R195	R195	I	Hs	
<b>Discodorididae</b>						
<i>Jorunna tomentosa</i> (Cuvier, 1804)		R166		I,II	Hs	
<i>Paradoris indecora</i> (Bergh, 1881)		R166	R195	I	Hs	
<i>Peltodoris atromaculata</i> Bergh, 1880		R166	R153	R194	I,II	Hs, Ss
<i>Platydoris argo</i> (Linnaeus, 1767)		R166	R2, R195	I,II	Hs	
<i>Rostanga rubra</i> (Risso, 1818)	R205	R195	R195	I,II	Hs	
<i>Taringa armata</i> Swennen, 1961		R219	R23	I	Ss	
<i>Tayuva lilacina</i> (Gould, 1852)		R195	R23	I	Hs	
<i>Thordisa filix</i> Pruvot-Fol, 1951	R195			II	Hs	
<b>Chromodorididae</b>						
<i>Chromodoris elegantula</i> (Philippi, 1844)			R194	II	Hs	
* <i>Chromodoris quadricolor</i> (Rüppell & Leuckart, 1830)			R167	II	Hs	
<i>Felimare fontandraui</i> (Pruvot-Fol, 1951)		R41		I	Hs	
<i>Felimare orsinii</i> (Vérany, 1846)		R195	R204	R194	I,II	Hs
<i>Felimare picta</i> (Schultz in Philippi, 1836)		R3, R142	R153		I,II	Hs
<i>Felimare tricolor</i> (Cantraine, 1835)	R205	R195	R204		I,II	Hs
<i>Felimare villafranca</i> (Risso, 1818)	R195	R195	R195		I,II	Hs
<i>Felimida krohni</i> (Vérany, 1846)		R166		I	Hs	
<i>Felimida luteorosea</i> (Rapp, 1827)		R142	R195	I	Hs	
<i>Felimida purpurea</i> (Risso in Guérin, 1831)	R205	R142	R194		I,II	Hs
* <i>Goniobranchus annulatus</i> (Eliot, 1904)			R184	I	Hs	
* <i>Hypselodoris infucata</i> (Rüppell & Leuckart, 1830)			R114	I,II	Hs	
<b>Phyllidiidae</b>						
<i>Phyllidia flava</i> Aradas, 1847		R142	R195	R194	I,II	Hs
<b>Onchidorididae</b>						
<i>Diaphorodoris luteocincta</i> (Sars, M., 1870)			R194	I	Hs	
<i>Diaphorodoris papillata</i> Portmann & Sandmeier, 1960			R194	I	Hs	
<b>Dendrodorididae</b>						
<i>Dendrodoris grandiflora</i> (Rapp, 1827)		R142	R23		I,II	Hs, Ss
* <i>Dendrodoris fumata</i> (Rüppell & Leuckart, 1830)			R212		I	Hs
<i>Dendrodoris limbata</i> (Cuvier, 1804)	R6, R195	R166	R204	R205	II,III	Hs, Ss
<i>Doriopsilla areolata</i> Bergh, 1880		R142			I	Hs
<b>Goniodorididae</b>						
<i>Trapania lineata</i> Haefelfinger, 1960		R195	R195		I	Hs
<i>Trapania maculata</i> Haefelfinger, 1960		R194, R195		R194	I,II	Hs, Ss
<b>Polyceridae</b>						
<i>Limacia clavigera</i> (Müller, O.F., 1776)		R194		R194	I,II	Hs, Ss
* <i>Plocamopherus ocellatus</i> Rüppell & Leuckart, 1828			R148, R220		I,II	Hs
* <i>Plocamopherus tilesii</i> Bergh, 1877			R220		III	Ss

**Table 1.** (Continued).

<i>Polycera quadrilineata</i> (Müller, O.F., 1776)	R195	R166, R195	R195		I,II	Hs
<b>Tritoniidae</b>						
<i>Marionia blainvillea</i> (Risso, 1818)	R16, R195				II	Ss
<i>Tritonia manicata</i> Deshayes, 1853			R23		I	Ss
<i>Tritonia nilsodhneri</i> Marcus, Ev., 1983		R195			II	Hs
<b>Scyllaeidae</b>						
<i>Scyllaea pelagica</i> Linnaeus, 1758			R195		I	Hs
<b>Tethydidae</b>						
* <i>Melibe viridis</i> (Kelaart, 1858)			R148		I,II	Ss
<i>Tethys fimbria</i> Linnaeus, 1767		R2, R32	R23		II-IV	Ss
<b>Arminidae</b>						
<i>Armina maculata</i> Rafinesque, 1814			R234		II	Ss
<i>Armina tigrina</i> Rafinesque, 1814	R6				III	Ss
<b>Dotidae</b>						
<i>Doto coronata</i> (Gmelin, 1791)	R16		PS	R16	I	Ss
<b>Proctonotidae</b>						
<i>Janolus cristatus</i> (Delle Chiaje, 1841)	R195	R142	R147		I,II	Hs
<b>Aeolidiidae</b>						
<i>Aeolidiella alderi</i> (Cocks, 1852)	R205			R180	II	Ss
* <i>Baeolidia moebii</i> Bergh, 1888			R209		II	Ss
<i>Limenandra nodosa</i> Haefelfinger & Stamm, 1958			R149		?	?
<i>Spurilla neapolitana</i> (Delle Chiage, 1841)			R23, R195		I	Ss
<b>Facelinidae</b>						
<i>Caloria elegans</i> (Alder & Hancock, 1845)		R149	R149		I,II	Hs
<i>Cratena peregrina</i> (Gmelin, 1791)		R149	R149	R194	I,II	Hs
<i>Dicata odhneri</i> Schmekel, 1967			R166		I	Hs
<i>Dondice banyulensis</i> Portmann & Sandmeier, 1960	R149	R149	R149		I,II	Hs
<i>Facelina annulicornis</i> (Chamisso & Eysenhardt, 1821)	R149	R195			II	Hs
<i>Facelina auriculata</i> (Müller, 1776)		R142			?	?
<i>Facelina bostoniensis</i> (Couthouy, 1838)	R195				II	Hs
<i>Facelina dubia</i> Pruvot-Fol, 1948	R195				II	Hs
<i>Facelina fusca</i> Schmekel, 1966		R219			I	Ss
<i>Facelina rubrovittata</i> (Costa A., 1866)		R149	R149		I,II	Hs
<i>Favorinus branchialis</i> (Rathke, 1806)			R149		II	Hs
<i>Pruvotfolia pselliotes</i> (Labbé, 1923)	R149				I,II	Hs
<b>Piseinotecidae</b>						
<i>Piseinotecus gabinierei</i> (Vicente, 1975)		R149	R149		I	Hs
<b>Flabellinidae</b>						
<i>Calmella cavolini</i> (Vérany, 1846)	R30	R16, R149	R149		I,II	Hs
<i>Flabellina affinis</i> (Gmelin, 1791)		R149	R149	R149	R194	I,II
<i>Flabellina babai</i> Schmekel, 1972			R149	R149		I,II
<i>Flabellina ischitana</i> Hirano & Thompson, 1990		R149	R149	R149		I,II
<i>Flabellina lineata</i> (Lovén, 1846)		R195				II
<i>Flabellina pedata</i> (Montagu, 1815)		R149	R149	R194		I,II
* <i>Flabellina rubrolineata</i> (O'Donoghue, 1929)			R148	R148		I,II

**Table 1.** (Continued).

<b>Eubranchiidae</b>								
<i>Eubranchus farrani</i> (Alder & Hancock, 1844)				R149		Hs		
<b>Tergipedidae</b>								
<i>Cuthona caerulea</i> (Montagu, 1804)		R142	R195		II	Hs		
<i>Cuthona foliata</i> (Forbes & Goodsir, 1839)	R23				I	Ss		
<i>Cuthona genovae</i> (O'Donoghue, 1929)			R195		II	Hs		
<i>Tergipes tergipes</i> (Forsskål in Niebuhr, 1775)		R16		R16	I,II	Ss		
<b>Siphonariidae</b>								
* <i>Siphonaria belcheri</i> Hanley, 1858			R112		I	Hs		
* <i>Siphonaria crenata</i> de Blainville, 1827			R112		I	Hs		
<i>Williamia gussoni</i> (Costa, O.G., 1829)	R6	R59	R88		I-III	Hs, Ss		
<b>Trimusculidae</b>								
<i>Trimusculus mamillaris</i> (Linnaeus, 1758)		R59	R88		I	Ss		
<b>Ellobiidae</b>								
<i>Auriculinella bidentata</i> (Montagu, 1808)		R130	R130	R88		I	Ss	
<i>Myosotella myosotis</i> (Draparnaud, 1801)		R91, R130	R59	R88	R223	I,II	Hs, Ss	
<i>Ovatella firminii</i> (Payraudeau, 1826)			R130	R88		I	Ss	
<b>BIVALVIA</b>								
<b>Solemyidae</b>								
<i>Solemya togata</i> (Poli, 1791)		R134	R130			II	Ss	
<b>Nuculidae</b>								
<i>Ennucula aegeensis</i> (Forbes, 1844)		R6	R130	R2	R223	III-VII	Ss	
<i>Ennucula tenuis</i> (Montagu, 1808)		R6				V	Ss	
<i>Nucula hanleyi</i> Winckworth, 1931			R157	R130	R223	I-III	Ss	
<i>Nucula nitidosa</i> Winckworth 1930		R16	R121	R17	R223	II-IV	Ss	
<i>Nucula nucleus</i> (Linnaeus, 1758)	R18	R16	R2	R2	R4	R3	I-III	Ss
<i>Nucula sulcata</i> Bronn, 1831	R14	R5	R130	R130	R4	R223	I-VII	Ss
<i>Nucula tumidula</i> Malm, 1861			R157				II	Ss
<b>Nuculanidae</b>								
<i>Nuculana pella</i> (Linnaeus, 1767)	R18	R5	R2	R2	R6	R223	I-VII	Ss
<i>Saccella commutata</i> (Philippi, 1844)	R128	R5	R130	R17	R4	R155	II-VII	Ss
<b>Yoldiidae</b>								
<i>Yoldiella philippiana</i> (Nyst, 1845)		R134					?	?
<i>Yoldiella striolata</i> (Brugnone, 1876)		R199					VII	Ss
<b>Arcidae</b>								
<i>Acar clathrata</i> (DeFrance, 1816)			R130	R2			V,VI	Ss
<i>Anadara corbuloides</i> (Monterosato, 1880)		R134	R142			R223	II	Ss
* <i>Anadara kagoshimensis</i> (Tokunaga, 1906)	R129	R90, R134	R85		R90		II	Ss
* <i>Anadara natalensis</i> (Krauss, 1848)				R61			I	Ss
<i>Anadara polii</i> (Mayer, 1868)	R151	R5	R130	R138		R7	I-IV	Ss
* <i>Anadara transversa</i> (Say, 1822)			R38	R85			I,II	Ss
<i>Arca noae</i> Linnaeus, 1758	R18	R16	R1	R88	R18	R155	I,II	Hs
<i>Arca tetragona</i> Poli, 1795	R28	R5	R3	R130	R4	R3	II-IV	Ss
<i>Barbatia barbata</i> (Linnaeus, 1758)		R27	R2	R88			II-IV	Ss
<i>Bathyarca pectunculoides</i> (Scacchi, 1835)		R6	R157				III-V	Ss
<i>Bathyarca philippiana</i> (Nyst, 1848)		R130	R130	R130			IV	Ss

**Table 1.** (Continued).

<b>Noetiidae</b>								
<i>Striarca lactea</i> (Linnaeus, 1758)	R73	R5	R2	R17	R4	R3	I-IV	Hs, Ss
<b>Glycymerididae</b>								
<i>Glycymeris bimaculata</i> (Poli, 1795)		R130	R130	R2			III	Ss
<i>Glycymeris glycymeris</i> (Linnaeus, 1758)		R6	R121	R12	R4	R7	I-III	Ss
<i>Glycymeris nummaria</i> (Linnaeus, 1758)		R6	R59	R130			I,II	Ss
<b>Mytilidae</b>								
* <i>Arcuatula perfragilis</i> (Dunker, 1857)				R203			I	Ss
* <i>Arcuatula senhousia</i> (Benson in Cantor, 1842)			R236	R188			I,II	Ss
* <i>Brachidontes pharaonis</i> (Fischer P., 1870)			R52	R48			I	Hs
<i>Dacrydium hyalinum</i> (Monterosato, 1875)			R144			R223	II-IV	Ss
<i>Gibbomodiola adriatica</i> (Lamarck, 1819)	R30	R6	R130	R2	R4	R223	I-V	Ss
<i>Gregariella petagnae</i> (Scacchi, 1832)			R41	R130			I	Hs
<i>Lioberus agglutinans</i> (Cantraine, 1835)				R88			I	Ss
# <i>Lithophaga lithophaga</i> (Linnaeus, 1758)		R16	R31	R31		R223	I	Hs
<i>Modiolarca subpicta</i> (Cantraine, 1835)	R28	R6	R59	R88	R4	R3	I-IV	Hs, Ss
<i>Modiolula phaseolina</i> (Philippi, 1844)	R14	R5	R121	R88	R4	R223	II-VI	Hs, Ss
<i>Modiolus barbatus</i> (Linnaeus, 1758)	R26	R6	R2	R35	R4	R3	I-III	Hs, Ss
<i>Mytilaster lineatus</i> (Gmelin, 1791)	R30	R6	R41	R200	R4	R223	I-III	Ss
** <i>Mytilaster marioni</i> (Locard, 1889)			R127					Hs
<i>Mytilaster minimus</i> (Poli, 1795)		R31	R31	R31	R4	R223	I	Hs
<i>Mytilaster solidus</i> Monterosato, 1883				R183			I	Hs
<i>Mytilus galloprovincialis</i> Lamarck, 1819	R14	R6	R29	R138	R6	R10	I-III	Hs, Ss
<i>Musculus costulatus</i> (Risso, 1826)		R27	R41	R130		R223	I,II	Hs
<i>Musculus discors</i> (Linnaeus, 1767)			R144				I,II	Ss
<i>Rhomboidella prideauxi</i> (Leach, 1815)			R169				II	Ss
* <i>Septifer bilocularis</i> (Linnaeus, 1758)				R161			II	Hs
* <i>Septifer cumingii</i> Récluz, 1849				R112			I	Hs
<b>Pinnidae</b>								
<i>Atrina fragilis</i> (Pennant, 1777)		R130	R130	R130	R7		II	Ss
# <i>Pinna nobilis</i> Linnaeus, 1758		R1	R1	R88	R7	R155	I-III	Ss
<b>Pteriidae</b>								
* <i>Electroma vexillum</i> (Reeve, 1857)				R156			I	Hs
* <i>Pinctada radiata</i> (Leach, 1814)			R52	R34			I	Hs
<i>Pteria hirundo</i> (Linnaeus, 1758)		R5	R2	R138		R3	II-IV	Hs, Ss
<b>Malleidae</b>								
* <i>Malleus regula</i> (Forsskål in Niebuhr, 1775)			R142	R36			I	Hs
<b>Pectinidae</b>								
<i>Aequipecten opercularis</i> (Linnaeus, 1758)		R5	R121	R2	R6	R3	II-VII	Ss
<i>Delectopecten vitreus</i> (Gmelin, 1791)		R6	R130		R6		III-VII	Ss
<i>Flexopecten flexuosus</i> (Poli 1795)	R151	R134	R130	R2	R7	R223	II,III	Ss
<i>Flexopecten glaber</i> (Linnaeus, 1758)	R18	R6	R2	R88	R4	R35	I-VII	Ss
<i>Flexopecten hyalinus</i> (Poli, 1795)		R130	R2	R130		R3	II-IV	Ss
<i>Manupecten pesfelis</i> (Linnaeus, 1758)		R130	R58, R121	R130			I	Hs, Ss

**Table 1.** (Continued).

<i>Mimachlamys varia</i> (Linnaeus, 1758)	R18	R6	R2	R17	R4	R155	I-III	Ss
<i>Palliolium incomparabile</i> (Risso, 1826)		R6	R130	R130			II-IV	Ss
<i>Palliolium striatum</i> (Müller O.F., 1776)		R6	R130				III	Ss
<i>Pecten jacobaeus</i> (Linnaeus, 1758)	R30	R6	R32	R2	R7	R155	II,III	Ss
<i>Pseudamussium clavatum</i> (Poli, 1795)	R28	R6	R121	R138	R7	R7	II-IV	Ss
<i>Pseudamussium peslutrae</i> (Linnaeus, 1771)			R189				IV	Ss
<i>Pseudamussium sulcatum</i> (Müller, O.F., 1776)			R2				I	Ss
<i>Talochlamys multistriata</i> (Poli, 1795)		R5	R59	R88		R3	I,II	Ss
<i>Talochlamys pusio</i> (Linnaeus, 1758)		R3	R2				III,IV	Ss
<b>Propeamussiidae</b>								
<i>Cyclopecten hoskynsi</i> (Forbes, 1844)				R2			V	Ss
<i>Parvamussium fenestratum</i> (Forbes, 1844)		R130	R130	R2			II-V	Ss
<i>Similipecten similis</i> (Laskey, 1811)		R6	R22	R2			II-V	Ss
<b>Spondylidae</b>								
<i>Spondylus gaederopus</i> Linnaeus, 1758		R134	R59	R88			I	Hs
<i>Spondylus gussonii</i> Costa O.G., 1829		R6					VI,VII	Ss
* <i>Spondylus spinosus</i> Schreibers, 1793			R142	R100			I	Hs
<b>Anomiidae</b>								
<i>Anomia ephippium</i> Linnaeus, 1758	R30	R5	R32	R35	R4	R3	I-III	Ss
<i>Heteranomia squamula</i> (Linnaeus, 1758)		R6	R130			R223	II,III	Ss
<i>Monia patelliformis</i> (Linnaeus, 1761)	R18	R6	R130		R6		II,III	Ss
<i>Monia squama</i> (Gmelin, 1791)		R6	R130				II,III	Ss
<b>Limidae</b>								
<i>Lima lima</i> (Linnaeus, 1758)	R18	R16	R3	R88	R18		I	Hs
<i>Lima marioni</i> Fischer, 1882			R157	PS			III	Ss
<i>Limaria hians</i> (Gmelin, 1791)		R6	R121	R2	R4	R3	II,III	Ss
<i>Limaria loscombi</i> (Sowerby G.B. I, 1823)		R134	R59	PS		R7	I-III	Ss
<i>Limaria tuberculata</i> (Oliv, 1792)	R28		R59	R130			I,II	Ss
<i>Limatula gwyni</i> (Sykes, 1903)			R59				I-IV	Ss
<i>Limatula subauriculata</i> (Montagu, 1808)		R6	R130	R2			III	Ss
<b>Ostreidae</b>								
* <i>Crassostrea gigas</i> (Thunberg, 1793)		R134	R179	R115			I	Hs
* <i>Dendostrea frons</i> (Linnaeus, 1758)				R113			I	Hs
<i>Ostrea edulis</i> Linnaeus, 1758	R35	R6	R79	R138	R4	R155	I-IV	Hs
<i>Ostrea stentina</i> Payraudeau, 1826			R41	R130			I	Hs
* <i>Saccostrea cucullata</i> (Born, 1778)				R115			I,II	Hs
<b>Gryphaeidae</b>								
<i>Neopycnodonte cochlear</i> (Poli, 1795)		R5	R130				II,III	Ss
<b>Carditidae</b>								
<i>Cardita calyculata</i> (Linnaeus, 1758)		R67	R3	R88			I	Ss
<i>Cardites antiquatus</i> (Linnaeus, 1758)		R134	R121	R2			I-IV	Ss
<i>Centrocardita aculeata</i> (Poli, 1795)		R5	R121	R88		R3	I-VI	Ss
* <i>Centrocardita akabana</i> (Sturany, 1899)				R163			I	Ss



**Table 1.** (Continued).

<i>Coripia corbis</i> (Philippi, 1836)		R130	R88			I	Ss	
<i>Coripia jozinae</i> (van Aartsen, 1985)			R64			I	Ss	
<i>Glans trapezia</i> (Linnaeus, 1767)	R67	R2	R2			I-IV	Ss	
<b>Astartidae</b>								
<i>Astarte fusca</i> (Poli, 1791)	R134	R2	R130		R7	III,IV	Ss	
<i>Astarte sulcata</i> (da Costa, 1778)	R5	R157	R214		R223	II,III	Ss	
<i>Digitaria digitaria</i> (Linnaeus, 1758)			R88			I	Ss	
<i>Gonilia calliglypta</i> (Dall, 1903)	R6	R2	R130			II-IV	Ss	
<i>Goodallia pusilla</i> (Forbes, 1844)		R2				III	Ss	
<i>Goodallia triangularis</i> (Montagu, 1803)		R130	R130			II,III	Ss	
<b>Lucinidae</b>								
<i>Ctena decussata</i> (Costa O.G., 1829)		R6	R59	R88	R4	R10	I,II	Ss
<i>Loripes lucinalis</i> (Lamarck, 1818)	R143	R6	R3	R88	R4	R7	I-VII	Ss
<i>Anodontia fragilis</i> (Philippi, 1836)		R6	R59	R88	R4	R223	I-III	Ss
<i>Lucinella divaricata</i> (Linnaeus, 1758)	R14	R6	R130	R2	R4	R223	I-VII	Ss
<i>Lucinoma borealis</i> (Linnaeus, 1767)	R18	R6	R130		R4	R7	II-VII	Ss
<i>Lucinoma kazani</i> Salas & Woodside, 2002		R199					VII	Ss
<i>Megaxinus unguiculinus</i> Pallary, 1904			R59	R88			I	Ss
<i>Myrtea amorpha</i> (Sturany, 1896)		R199					VII	Ss
<i>Myrtea spinifera</i> (Montagu, 1803)	R128	R5	R2	R2	R6	R7	I-VII	Ss
<b>Thyasiridae</b>								
<i>Axinulus eumyarius</i> (Sars M., 1870)		R6					?	?
<i>Thyasira alleni</i> Carrozza, 1981		R6					IV,V	Ss
<i>Thyasira biplicata</i> (Philippi, 1836)		R6	R229				III,IV	Ss
<i>Thyasira flexuosa</i> (Montagu, 1803)	R18	R6	R130	R130	R18	R223	I-V	Ss
<i>Thyasira granulosa</i> (Monterosato, 1874)		R6	R130				III-VII	Ss
<b>Ungulinidae</b>								
<i>Diplodonta brocchii</i> (Deshayes, 1850)		R130	R130	R130			?	?
<i>Diplodonta rotundata</i> (Montagu, 1803)	R130	R6	R130	R130	R4		I-III	Ss
<i>Diplodonta trigona</i> (Scacchi, 1835)				R88			I	
<b>Chamidae</b>								
* <i>Chama asperella</i> Lamarck, 1819		R202	R181	R181			I	Hs
<i>Chama circinata</i> di Monterosato, 1878		R130	R130	R130			?	?
<i>Chama gryphoides</i> Linnaeus, 1758		R6	R10	R88	R4		I-VII	Hs, Ss
* <i>Chama pacifica</i> Broderip, 1835				R113			I	Hs
<i>Pseudochama gryphina</i> (Lamarck, 1819)		R67	R10	R88			I	Hs
<b>Galeommatidae</b>								
<i>Galeomma turtoni</i> Turton, 1825		R27	R130	R88			I	Ss
* <i>Nudiscintilla</i> cf. <i>glabra</i> Lützen & Nielsen, 2005				R216			I	Hs
<b>Kelliidae</b>								
<i>Bornia sebetia</i> (Costa O.G., 1829)		R27	R130	R88			I	Ss
<i>Kellia suborbicularis</i> (Montagu, 1803)	R28	R6	R121	R130	R4	R223	I-III	Ss
<b>Lasaeidae</b>								
<i>Hemilepton nitidum</i> (Turton, 1822)	R143	R6	R59	R88	R27		I-IV	Ss
<i>Lasaea adansoni</i> (Gmelin, 1791)			R130	R88			I	Ss
<i>Lepton squamosum</i> (Montagu, 1803)		R6	R130	R130			II,III	Ss

**Table 1.** (Continued).

<i>Scacchia oblonga</i> (Philippi, 1836)			R59	R88				I-IV	Ss
<b>Montacutidae</b>									
<i>Kurtiella bidentata</i> (Montagu, 1803)	R28	R5	R59	R88	R6	R223		I-VII	Ss
<i>Litigiella glabra</i> (Fischer, P. in de Folin & Périer, 1873)				R88				I	Ss
<i>Mancikellia parrussetensis</i> (Giribet & Peñas, 1999)		R134						?	?
<i>Montacuta phascolionis</i> Dautzenberg & Fischer, H., 1925			R130	R130				?	?
<i>Montacuta substriata</i> (Montagu, 1808)			R130					II,III	Ss
<i>Tellimya ferruginosa</i> (Montagu, 1808)		R6	R59	R88		R223		I-V	Ss
<b>Sportellidae</b>									
<i>Sportella recondita</i> (Fischer P. in de Folin, 1872)		R6						III	Ss
<b>Cardiidae</b>									
<i>Acanthocardia aculeata</i> (Linnaeus, 1758)		R130	R121		R4	R155		I,II	Ss
<i>Acanthocardia deshayesii</i> (Payraudeau, 1826)		R6	R130	R130				III	Ss
<i>Acanthocardia echinata</i> (Linnaeus, 1758)	R143	R5	R2	R2	R4			I-III	Ss
<i>Acanthocardia paucicostata</i> (Sowerby G. B.II, 1834)	R73	R6	R121	R17	R4			I-VII	Ss
<i>Acanthocardia spinosa</i> (Lightfoot, 1786)		R130	R79					II	Ss
<i>Acanthocardia tuberculata</i> (Linnaeus, 1758)	R73	R27	R59	R88	R4	R10		I-III	Ss
* <i>Afrocardium richardi</i> (Audouin, 1826)				R105				?	?
<i>Cerastoderma glaucum</i> (Bruguère, 1789)	R129	R6	R121	R138	R90			I,II	Ss
* <i>Fulvia fragilis</i> (Forsskål in Niebuhr, 1775)			R154	R55				I	Ss
<i>Laevicardium crassum</i> (Gmelin, 1791)		R6	R96	R2		R223		II,III	Ss
<i>Laevicardium oblongum</i> (Gmelin, 1791)		R6	R79	R130	R4	R7		II,III	Ss
<i>Parvicardium exiguum</i> (Gmelin, 1791)	R14	R6	R95	R2	R4	R10		I-VII	Ss
<i>Parvicardium minimum</i> (Philippi, 1836)		R5	R130	R130				II-IV	Ss
<i>Parvicardium pinnulatum</i> (Conrad, 1831)		R134		R88	R4	R7		I-III	Ss
<i>Parvicardium scabrum</i> (Philippi, 1844)	R27	R6	R130	R130	R4	R223		II	Ss
<i>Parvicardium scriptum</i> (Bucquoy, Dautzenberg & Dollfus, 1892)			R59					I	Ss
<i>Parvicardium trapezium</i> Cecalupo & Quadri, 1996				R105				?	?
<i>Parvicardium vroomi</i> van Aartsen, Menkhorst & Gittenberger, 1984			R132					II-IV	Ss
<i>Papillicardium papillosum</i> (Poli, 1791)	R73	R6	R121	R2	R6	R3		I-IV	Ss
<b>Mactridae</b>									
<i>Lutraria angustior</i> Philippi, 1844				R214				III	Ss
<i>Mactra glauca</i> Born, 1778		R130	R130					?	?
<i>Mactra stultorum</i> (Linnaeus, 1758)	R30	R27	R32	R12	R4	R10		I	Ss
<i>Spisula solida</i> (Linnaeus, 1758)	R151	R134			R7			?	?
<i>Spisula subtruncata</i> (da Costa, 1778)	R14	R6	R46	R130	R4	R10		I-III	Ss
<b>Mesodesmatidae</b>									
<i>Donacilla cornea</i> (Poli, 1791)	R130	R27	R33	R130	R4	R10		I	Ss
<b>Tellinidae</b>									
<i>Arcopagia balaustina</i> (Linnaeus, 1758)		R6	R59	R88	R7	R223		I-IV	Ss
<i>Gastrana fragilis</i> (Linnaeus, 1758)	R130	R6	R46	R88	R4	R10		I,II	Ss

**Table 1.** (Continued).

<i>Macoma cumana</i> (Costa O.G., 1829)				R130	R4		II	Ss
<i>Moerella donacina</i> (Linnaeus, 1758)	R5	R2	R2	R4	R223		I-III	Ss
* <i>Psammotreta praerupta</i> (Salisbury, 1934)	R100		R100				IV	Ss
<i>Tellina albicans</i> Gmelin, 1791	R6	R46	R12	R6	R223		I-VII	Ss
<i>Tellina distorta</i> Poli, 1791	R129	R27	R46	R130			I-III	Ss
<i>Tellina donacina</i> Linnaeus, 1758	R28	R27	R130	R130	R4			
<i>Tellina incarnata</i> Linnaeus, 1758	R6	R59	R130		R10		I,II	Ss
<i>Tellina planata</i> Linnaeus, 1758	R57	R130	R12				I,II	Ss
<i>Tellina pulchella</i> Lamarck, 1818	R6	R59	R88	R6	R155		II-VII	Ss
<i>Tellina pygmaea</i> Lovén, 1846	R6		R214				I,II	Ss
<i>Tellina serrata</i> Brocchi, 1814	R130	R6	R130	R130	R3		II,III	Ss
<i>Tellina tenuis</i> da Costa, 1778	R73	R16	R79	R138	R4	R223	I,II	Ss
* <i>Tellina valtonis</i> Hanley, 1844				R116			I	Ss
<b>Donacidae</b>								
<i>Donax variegatus</i> (Gmelin, 1791)	R6	R59	R88		R223		I,II	Ss
<i>Donax semistriatus</i> Poli, 1795		R59	R130				I	Ss
<i>Donax trunculus</i> Linnaeus, 1758	R14	R16	R33	R12	R4	R10	I,II	Ss
<i>Donax venustus</i> Poli, 1795	R73	R6	R59	R130	R27		I,II	Ss
<i>Donax vittatus</i> (da Costa, 1778)				R214			I	Ss
<b>Psammobiidae</b>								
<i>Gari costulata</i> (Turton, 1822)	R130	R121	R88		R223		I-III	Ss
<i>Gari depressa</i> (Pennant, 1777)	R6	R130	R130	R4	R7		I-III	Ss
<i>Gari fervensis</i> (Gmelin, 1791)	R5	R121	R17	R4	R223		I,II	Ss
<i>Gari tellinella</i> (Lamarck, 1818)			R88				I	Ss
<b>Semelidae</b>								
<i>Abra alba</i> (Wood W., 1802)	R28	R5	R2	R2	R4	R155	I-VII	Ss
<i>Abra longicallus</i> (Scacchi, 1835)		R5	R2	R2	R6	R223	I-VII	Ss
<i>Abra nitida</i> (Müller O.F., 1776)	R26	R6	R130	R130			I-VI	Ss
<i>Abra prismatica</i> (Montagu, 1808)	R28	R6	R2	R2	R4	R223	II,III	Ss
<i>Abra segmentum</i> (Récluz, 1843)	R28	R6	R130	R17	R4		I	Ss
<i>Abra tenuis</i> (Montagu, 1803)			R59				I	Ss
* <i>Ervilia scaliola</i> Issel, 1869				R240			I	Ss
<i>Scrobicularia cottardi</i> (Payraudeau, 1826)			R59	R130			I	Ss
<i>Scrobicularia plana</i> (da Costa, 1778)	R134	R130					?	?
<b>Solecurtidae</b>								
<i>Azorinus chamasolen</i> (da Costa, 1778)	R5	R2	R2	R6			I-VII	Ss
<i>Solecurtus scopula</i> (Turton, 1822)	R130	R130	R130		R7		III	Ss
<i>Solecurtus strigilatus</i> (Linnaeus, 1758)	R18	R27	R1	R138	R18		I	Ss
<b>Trapezidae</b>								
<i>Coralliophaga lithophagella</i> (Lamarck, 1819)	R6	R121					II,III	Ss
<b>Glossidae</b>								
<i>Glossus humanus</i> (Linnaeus, 1758)	R30	R16	R130				?	?
<b>Kelliellidae</b>								
<i>Kelliella miliaris</i> (Philippi, 1844)	R6	R130	R2	R6			II-VII	Ss

**Table 1.** (Continued).

<b>Vesicomyiidae</b>								
<i>Isorropodon perplexum</i> Sturany, 1896			R199				VII	Ss
<b>Veneridae</b>								
* <i>Antigona lamellaris</i> Schumacher, 1817				R100			I	Ss
<i>Callista chione</i> (Linnaeus, 1758)			R121	R130	R7	R10	I,II	Ss
<i>Chamelea gallina</i> (Linnaeus, 1758)	R14	R6	R96	R12	R4	R10	I-VII	Ss
<i>Chamelea striatula</i> (da Costa, 1778)			R57			R223	I	Ss
<i>Clausinella fasciata</i> (da Costa, 1778)	R14	R5	R121	R130	R4	R3	II-VI	Ss
* <i>Clementia papyracea</i> (Gray, 1825)				R52			I	Ss
<i>Dosinia exoleta</i> (Linnaeus, 1758)	R130	R6	R46	R130	R4	R223	I,II	Ss
<i>Dosinia lupinus</i> (Linnaeus, 1758)		R16	R2	R12	R7	R7	I-III	Ss
* <i>Gafrarium pectinatum</i> (Linnaeus, 1758)				R54			I	Ss
<i>Globivenus effossa</i> (Philippi, 1836)		R6	R130		R6	R223	II-VI	Ss
<i>Gouldia minima</i> (Montagu, 1803)	R14	R5	R2	R2	R4	R223	I-VII	Ss
* <i>Gouldiopa consternans</i> (Oliver & Zuschin, 2001)				R224			I	Ss
<i>Irus irus</i> (Linnaeus, 1758)	R130	R6	R41	R88	R27	R10	I,II	Hs, Ss
<i>Lajonkairia lajonkairii</i> (Payraudeau, 1826)			R59	R88			I	Ss
<i>Mysia undata</i> (Pennant, 1777)		R5	R130	R2			I-III	Ss
* <i>Paphia textile</i> (Gmelin, 1791)				R61			I,II	Ss
* <i>Petricola fabagella</i> Lamarck, 1818				R163			I	Hs
<i>Petricola lithophaga</i> (Retzius, 1788)	R130	R6	R130	R88	R4	R10	I,II	Hs, Ss
<i>Pitar mediterraneus</i> (Aradas & Benoit, 1872)	R73	R6				R10	II,III	Ss
<i>Pitar rudis</i> (Poli, 1795)	R14	R5	R121	R2	R4	R7	I-VII	Ss
<i>Politiitapes aureus</i> (Gmelin, 1791)	R30	R6	R32	R88	R4	R10	I-VII	Ss
<i>Politiitapes rhomboides</i> (Pennant, 1777)		R134	R41	R196		R155	I	Ss
<i>Ruditapes decussatus</i> (Linnaeus, 1758)		R16	R95	R88		R10	I	Ss
* <i>Ruditapes philippinarum</i> (Adams & Reeve, 1850)		R146	R111			R155	I,II	Ss
<i>Timoclea ovata</i> (Pennant, 1777)	R18	R5	R2	R2	R4	R7	I-VII	Ss
* <i>Timoclea roemeriana</i> (Issel, 1869)				PS			II	Ss
<i>Venerupis corrugata</i> (Gmelin, 1791)		R27	R41	R12		R10	I,II	Ss
<i>Venus casina</i> Linnaeus, 1758	R73	R6	R130	R130	R4	R7	II,III	Ss
<i>Venus nux</i> Gmelin, 1791		R134				R7	III	Ss
<i>Venus verrucosa</i> Linnaeus, 1758		R6	R32	R88	R4	R7	I-VI	Ss
<b>Neoleptonidae</b>								
<i>Neolepton sulcatulum</i> (Jeffreys, 1859)		R130	R157				II,III	Ss
<b>Myidae</b>								
* <i>Mya arenaria</i> Linnaeus, 1758	R98	R90	R202		R90		II	Ss
<i>Sphenia binghami</i> Turton, 1822		R130	R41	R88			I,II	Ss
* <i>Sphenia rueppellii</i> Adams A., 1850				R201			I	Hs
<b>Corbulidae</b>								
<i>Corbula gibba</i> (Olivi, 1792)	R14	R5	R2	R2	R4	R3	I-VII	Ss
<i>Lentidium mediterraneum</i> (Costa O.G., 1829)	R129	R5	R130		R4		II,III	Ss
<b>Pholadidae</b>								
<i>Barnea candida</i> (Linnaeus, 1758)	R27	R130	R130	R130			?	?

**Table 1.** (Continued).

# <i>Pholas dactylus</i> Linnaeus, 1758	R129	R16	R32	R88		R10	I	Hs
<i>Xylophaga dorsalis</i> (Turton, 1819)		R6		R210	R4		I-VII	Hs, Ss
<b>Teredinidae</b>								
<i>Bankia carinata</i> (Gray J.E., 1827)		R130	R130	R193			I	Hs
<i>Lyrodus pedicellatus</i> (de Quatrefages, 1849)	R193	R130	R130	R193			I	Hs
<i>Nototeredo norvagica</i> (Spengler, 1792)	R151	R6		R193	R4		II	Ss
* <i>Teredo bartschi</i> Clapp, 1923				R235			I	Hs
* <i>Teredo navalis</i> Linnaeus, 1758	R151	R16	R130	R193	R4		I	Hs
* <i>Teredothyra dominicensis</i> (Bartsch, 1921)				R206			II,III	Hs
<b>Xylophagidae</b>								
<i>Xylophaga dorsalis</i> (Turton, 1819)		R6		R210	R4		I-VII	Hs, Ss
<b>Gastrochaenidae</b>								
* <i>Cucurbitula cymbium</i> (Spengler, 1783)				R65			I-III	Hs
<i>Gastrochaena dubia</i> (Pennant, 1777)	R130	R6	R41	R2	R4	R155	I-III	Hs
<b>Solenidae</b>								
<i>Solen marginatus</i> Pulteney, 1799	R130	R16	R25	R130	R4	R155	I	Ss
<b>Pharidae</b>								
<i>Ensis ensis</i> (Linnaeus, 1758)	R28	R6	R59	R130	R4	R155	I-IV	Ss
<i>Ensis minor</i> (Chenu, 1843)		R130	R59	R130			I	Ss
<i>Ensis siliqua</i> (Linnaeus, 1758)		R27				R223	?	?
<i>Pharus legumen</i> (Linnaeus, 1758)			R25	R138		R155	I,II	Ss
<i>Phaxas pellucidus</i> (Pennant, 1777)		R6	R2	R210			II,III	Ss
<b>Hiatellidae</b>								
<i>Hiatella arctica</i> (Linnaeus, 1767)	R28	R6	R2	R2	R4	R10	I-V	Hs
<i>Hiatella rugosa</i> (Linnaeus, 1767)		R5	R41			R223	I-III	Hs
<i>Saxicavella jeffreysi</i> Winckworth, 1930		R130	R130	R130			?	?
<b>Thraciidae</b>								
<i>Thracia convexa</i> (Wood W., 1815)		R130	R130	R210			II	Ss
<i>Thracia corbuloidea</i> de Blainville, 1827		R130	R130	R88			I	Ss
<i>Thracia distorta</i> (Montagu, 1803)		R6	R41				I,II	Ss
<i>Thracia phaseolina</i> (Lamarck, 1818)		R27	R59	R88	R4	R223	I-IV	Ss
<i>Thracia pubescens</i> (Pulteney, 1799)		R6	R2	R2	R7	R223	II,III	Ss
<b>Laternulidae</b>								
* <i>Laternula anatina</i> (Linnaeus, 1758)				R85			?	?
<b>Pandoridae</b>								
<i>Pandora inaequalis</i> (Linnaeus, 1758)		R6	R59	R175			I-III	Ss
<i>Pandora pinna</i> (Montagu, 1803)		R130	R2				II,III	Ss
<b>Lyonsiidae</b>								
<i>Lyonsia norwegica</i> (Gmelin, 1791)			R130				?	?
<b>Poromyidae</b>								
<i>Poromya granulata</i> (Nyst & Westendorp, 1839)		R6	R130	R2			II-IV	Ss
<b>Verticordiidae</b>								
<i>Verticordia granulata</i> Seguenza G., 1860				R191			IV	Ss
<b>Cuspidariidae</b>								
<i>Cardiomya costellata</i> (Deshayes, 1835)		R6	R130	R2			II-V	Ss
<i>Cuspidaria cuspidata</i> (Olivi, 1792)		R5	R79	R2			II-VII	Ss

**Table 1.** (Continued).

<i>Cuspidaria rostrata</i> (Spengler, 1793)	R6	R130	R130		R223	II-IV	Ss
<i>Tropidomyia abbreviata</i> (Forbes, 1843)	R6	R130	R2			III-V	Ss
<b>SCAPHOPODA</b>							
<b>Dentaliidae</b>							
<i>Antalis dentalis</i> (Linnaeus, 1758)	R5, R16	R208	R221			I,II	Ss
<i>Antalis inaequicostata</i> (Dautzenberg, 1891)	R6, R27	R2, R22	R2, R88	R4	R223	I-III	Hs,Ss
<i>Antalis panorma</i> (Chenu, 1843)		R208	R208			III,IV	Ss
<i>Antalis rossati</i> (Caprotti, 1966)		R208				II	Ss
<i>Antalis vulgaris</i> (da Costa, 1778)	R6, R27	R59	R88		R3, R223	I-III	Ss
<b>Fustiariidae</b>							
<i>Fustiaria rubescens</i> (Deshayes, 1825)		R59, R208	R208		R223	II,III	Ss
<b>Entalinidae</b>							
<i>Entalina tetragona</i> (Brocchi, 1814)	R6	R208	R2, R208			III-VII	Ss
<b>Pulsellidae</b>							
<i>Pulsellum lofotense</i> (Sars, M., 1865)		R208				III,IV	Ss
<b>Gadilidae</b>							
<i>Cadulus jeffreysi</i> (Monterosato, 1875)		R208				IV	Ss
<i>Dischides politus</i> (S. Wood, 1842)		R208	R221			II-IV	Ss
<b>CEPHALOPODA</b>							
<b>Sepiidae</b>							
# <i>Sepia officinalis</i> Linnaeus, 1758	R16	R63	R145			I-IV	D
# <i>Sepia elegans</i> de Blainville, 1827	R15	R63	R145			III-VI	D
# <i>Sepia orbignyana</i> Ferrussac, 1826	R72	R62	R145			III-VI	D
<b>Sepiolidae</b>							
# <i>Sepiola rondeletii</i> Leach, 1817	R16	R92				II-IV	D
# <i>Sepiola intermedia</i> Naef, 1912		R92				II-IV	D
# <i>Sepiola ligulata</i> Naef, 1912		<b>PS</b>				III-V	D
# <i>Sepiola robusta</i> Naef, 1912		R92				II-IV	D
# <i>Sepiola steenstrupiana</i> Lévy, 1912			R145			I,II	D
# <i>Rondeletiola minor</i> (Naef, 1912)	R72	R63	R145			III-VII	D
# <i>Sepietta oweniana</i> Naef, 1916	R6	R63	R145			III-VII	D
# <i>Sepietta neglecta</i> Naef, 1916	R15	R92	R145			III-VI	D
# <i>Sepietta obscura</i> Naef, 1916	R6	R126				II-IV	D
# <i>Rossia macrosoma</i> (Delle Chiaje, 1830)		R92	R126			IV-VII	D
# <i>Neorossia caroli</i> (Joubin, 1902)		R92				V-VII	D
# <i>Heteroteuthis dispar</i> (Rüppell, 1844)		R63				IV-VII	P
<b>Loliginidae</b>							
<i>Loligo vulgaris</i> Lamarck, 1798	R16	R63	R145			II-IV	D
<i>Loligo forbesi</i> Steenstrup, 1856		R92	R145			III-VII	D
<i>Alloteuthis media</i> (Linnaeus, 1758)	R15	R62	R126			II-VI	D
<i>Alloteuthis subulata</i> (Lamarck, 1798)		R92	R145			II-IV	D
* <i>Sepioteuthis lessoniana</i> Lesson, 1830			R125			I-III	D

**Table 1.** (Continued).

<b>Ancistrocheiridae</b>					
<i>Ancistrocheirus lesueurii</i> (d'Orbigny, 1842)		R126		VI,VII	P
<b>Brachioteuthidae</b>					
<i>Brachioteuthis riisei</i> (Steenstrup, 1882)		R133		II-VII	P
<b>Chiroteuthidae</b>					
<i>Chiroteuthis veranii</i> (Férussac, 1835)	R11	R133		V-VII	P
<b>Ctenopterygidae</b>					
<i>Ctenopteryx sicula</i> (Vérany, 1851)		R133		V-VII	P
<b>Enoploteuthidae</b>					
<i>Abralia veranyi</i> (Rüppell, 1844)		R92	R145	III-VII	P
<i>Abraliopsis morisii</i> (Vérany, 1839)		PS		III-VII	P
<b>Histioteuthidae</b>					
<i>Histioteuthis bonnellii</i> (Férussac, 1835)		R92		VI,VII	P
<i>Histioteuthis reversa</i> (Verrill, 1880)		R133		V-VII	P
<b>Octopoteuthidae</b>					
** <i>Octopoteuthis sicula</i> Rüppell, 1848		R213	R213	V-VII	P
<b>Ommastrephidae</b>					
<i>Illex coindetii</i> (Vérany, 1839)	R11	R92	R145	II-VII	D
<i>Todaropsis eblanae</i> (Ball, 1841)	R72	R92	R145	III-VII	D
<i>Todarodes sagittatus</i> (Lamarck, 1798)	R16	R62	R145	I-VII	P
<i>Ommastrephes bartramii</i> (Lesueur, 1821)		R69		I-VII	P
<b>Onychoteuthidae</b>					
<i>Onychoteuthis banksi</i> (Leach, 1817)		R133		II-VII	P
<i>Ancistroteuthis lihctensteini</i> (d'Orbigny, 1839)		R126		IV-VII	P
<b>Pyroteuthidae</b>					
<i>Pyroteuthis margaritifera</i> (Rüppell, 1844)		R133	R145	II-VII	P
<b>Thysanoteuthidae</b>					
<i>Thysanoteuthis rhombus</i> Troschel, 1857		R133		II-VII	P
<b>Octopodidae</b>					
* <i>Amphioctopus aegina</i> (Gray, 1849)			R104	II-IV	D
<i>Callistoctopus macropus</i> (Risso, 1826)	R16	R92	R145	I-III	D
<i>Macrotritopus defilippi</i> (Vérany, 1851)			R145	I-III	D
<i>Octopus vulgaris</i> Cuvier, 1797	R11	R1	R145	I-IV	D
<i>Octopus salutii</i> Vérany, 1837		R92		IV-VI	D
<i>Scaergus unicirrhus</i> (Delle Chiaje in de Férussac & d'Orbigny, 1841)		R92	R145	IV-VII	D
<i>Pteroctopus tetracirrhus</i> (Delle Chiaje, 1830)		R92	R145	V-VII	D
<i>Eledone moschata</i> (Lamarck, 1799)	R15	R63	R145	II-V	D
# <i>Eledone cirrhosa</i> (Lamarck, 1798)	R6	R92	R126	III-VII	D
<i>Bathypolypus sponsalis</i> (Fischer, P. & Fischer, H. 1892)		R92		VI,VII	D
<b>Tremoctopodidae</b>					
<i>Tremoctopus violaceus</i> Delle Chiaje, 1830		R126		I-III	P

Table 1. (Continued).

<b>Argonautidae</b>			
<i>Argonauta argo</i> Linnaeus, 1758	R62	I-IV	P
<b>Ocythoidae</b>			
<i>Ocythoe tuberculata</i> Rafinesque, 1814	R63	I-III	P

**References in Table 1:**

R1: Forsskål, 1775; R2: Forbes, 1844; R3: Colombo, 1885; R4: Ostroumoff, 1894; R5: Sturany, 1895; R6: Ostroumoff, 1896; R7: Marion, 1898; R8: Kowalewsky, 1901; R9: Zernov, 1913; R10: Pallary, 1917; R11: Degner, 1925; R12: Gruvel, 1931; R13: Jakubova, 1935; R14: Jakubova, 1948; R15: Digby, 1949; R16: Demir, 1952; R17: Akyüz, 1957; R18: Kaneva-Abadjieva, 1959; R19: Tortonese, 1959; R20: Fischer-Piette, 1960; R21: Oberling, 1960–1962; R22: Kiseleva, 1961; R23: Swennen, 1961; R24: Vinogradov, 1962; R25: Uysal, 1967; R26: Caspers, 1968; R27: Oberling, 1969–1971; R28: Kiseleva, 1969; R29: Uysal, 1970; R30: Bacescu et al., 1971; R31: Geldiay and Uysal, 1971; R32: Geldiay and Kocataş, 1972; R33: Geldiay and Uysal, 1972; R34: Barash and Danin, 1973; R35: Pınar, 1973; R36: Falchi, 1974; R37: van Aartsen, 1977; R38: Demir, 1977; R39: Parenzan, 1977; R40: van Aartsen and Fehr-de Wal, 1978; R41: Kocataş, 1978; R42: Barash and Danin, 1982; R43: Blöcher, 1983; R44: Nicolay and Romagna-Manoja, 1983; R45: Oliverio, 1983; R46: Önen, 1983; R47: Verduin, 1984; R48: Kinzelbach, 1985; R49: Müller, 1985; R50: Oliverio, 1986; R51: Amati and Oliverio, 1987; R52: Enzenross and Enzenross, 1987; R53: Kaas and van Belle, 1987; R54: Lindner 1987; R55: Lindner 1988; R56: van Aartsen et al., 1989; R57: Yüksek, 1989; R58: Tümtürk, 1989; R59: van Aartsen and Kinzelbach, 1990; R60: van Aartsen et al., 1990; R61: Enzenross et al., 1990; R62: Katakın and Benli, 1990; R63: Katakın and Kocataş, 1990; R64: Tringali and Villa, 1990; R65: Niederhofer et al., 1991; R66: Balkıs, 1992; R67: Barash and Danin, 1992; R68: Engl, 1992; R69: Katakın et al., 1992; R70: Linden and Eikenboom, 1992; R71: Micali and Palazzi, 1992; R72: Katakın et al., 1993; R73: Mutlu et al., 1993; R74: Oliverio, 1993; R75: Palazzi, 1993; R76: Topaloğlu and Kihara, 1993; R77: Buzzurro and Greppi, 1994; R78: Ergen and Çınar, 1994; R79: Ergen et al., 1994; R80: Mutlu, 1994; R81: Oliverio et al., 1994; R82: Tringali, 1994; R83: Bogi et al., 1995; R84: Buzzurro et al., 1995; R85: Engl, 1995; R86: Mutlu, 1995; R87: Tringali, 1995; R88: Buzzurro and Greppi, 1996; R89: Albayrak and Balkıs, 1996a; R90: Albayrak and Balkıs, 1996b; R91: Butakov et al., 1997; R92: Salman et al., 1997; R93: van Aartsen and Recevik, 1998; R94: Brunetti et al., 1998; R95: Çınar et al., 1998; R96: Öztürk et al., 1998; R97: Smriglio et al., 1998; R98: Uysal et al., 1998; R99: Wilke and Aartsen, 1998; R100: Engl and Çeviker, 1999; R101: Gianuzzi-Savelli et al., 1999; R102: Micali, 1999; R103: Öztürk and Ergen, 1999; R104: Salman et al., 1999; R105: van Aartsen and Goud, 2000; R106: Houart, 2000; R107: Öztürk and Ergen, 2000; R108: Öztürk et al., 2000; R109: Schniebs, 2000; R110: Albayrak, 2001; R111: Albayrak et al., 2001; R112: Albayrak and Çeviker, 2001; R113: Çeviker, 2001; R114: Çevik and Öztürk, 2001; R115: Çevik et al., 2001; R116: Giunchi et al., 2001; R117: Houart, 2001; R118: Öztürk, 2001; R119: Öztürk and Çevik, 2001; R120: Öztürk et al., 2001; R121: Albayrak, 2002; R122: van Aartsen, 2002; R123: Kabasakal and Kabasakal, 2002; R124: Onmuş, 2002; R125: Salman, 2002; R126: Salman et al., 2002; R127: Öztürk et al., 2002; R128: Uysal et al., 2002; R129: Albayrak, 2003; R130: Demir, 2003; R131: Erol-Özfuçucu et al., 2003; R132: Mifsud and Ovalis, 2003; R133: Salman et al., 2003; R134: Albayrak et al., 2004; R135: Arda et al., 2004; R136: Buzzurro and Cecalupo, 2004; R137: Çevik and Ergüden, 2004; R138: Çevik and Sarıhan, 2004; R139: Gönülğür-Demirci and Katakın, 2004; R140: Mavili, 2004; R141: Mienis, 2004; R142: Okuş et al., 2004; R143: Öztürk et al., 2004; R144: Önen et al., 2004; R145: Salman and Katakın, 2004; R146: Tuncer et al., 2004; R147: Türkmen, 2004; R148: Yokeş and Rudman, 2004a; R149: Yokeş and Rudman, 2004b; R150: Doğan et al., 2005; R151: Gönülğür-Demirci, 2005; R152: Koçak and Katakın, 2005; R153: Öztürk et al., 2005; R154: Öztürk and Poutiers, 2005; R155: Palaz and Berber, 2005; R156: Çevik et al., 2005; R157: Doğan, 2005; R158: van Aartsen, 2006; R159: van Aartsen and Goud, 2006; R160: van Aartsen and Hori, 2006; R161: Albayrak and Çağlar, 2006; R162: Buzzurro and Cecalupo, 2006; R163: Çeviker and Albayrak, 2006; R164: Kabasakal et al., 2006; R165: Kabasakal et al., 2006; R166: Okuş et al., 2006; R167: Öztürk and Can, 2006; R168: Öztürk and van Aartsen, 2006; R169: Öztürk et al., 2006; R170: Salvini-Plawen and Öztürk, 2006; R171: Çevik et al., 2006; R172: Çınar et al., 2006; R173: Falakalı-Mutaf et al., 2007; R174: Aker et al., 2007; R175: Aydın et al., 2007; R176: Buzzurro and Russo, 2007; R177: Çulha et al., 2007; R178: Delongueville and Scaillet, 2007; R179: Doğan et al., 2007; R180: Karhan et al., 2007; R181: Mifsud and Ovalis, 2007; R182: Öztürk et al., 2007; R183: Öztürk et al., 2007; R184: Gököğlü and Özgür, 2008; R185: Houart, 2008; R186: Öztürk et al., 2008; R187: Öztürk et al., 2008; R188: Uysal et al., 2008; R189: Doğan et al., 2008; R190: van Aartsen, 2009; R191: Doğan et al., 2009; R192: Karhan and Yokeş, 2009; R193: Şen et al., 2009; R194: Türkmen and Demirsoy, 2009; R195: Yokeş, 2009; R196: Albayrak, 2010; R197: Bitlis et al., 2010; R198: Cecalupo and Robba, 2010; R199: Ritt et al., 2010; R200: Şen et al., 2010; R201: Zenetos et al., 2010; R202: Çınar et al., 2011; R203: Eleftheriou et al., 2011; R204: Gözcelioğlu, 2011; R205: Kabasakal et al., 2011; R206: Müller, 2011; R207: Öztürk et al., 2011; R208: Öztürk, 2011; R209: Turk and Furlan, 2011; R210: Bitlis-Bakır et al., 2012; R211: Bogi et al., 2012; R212: Çevik et al., 2012; R213: Jereb et al., 2012; R214: Mutlu and Ergev, 2012; R215: Micali et al., 2012; R216: Mifsud and Ovalis, 2012; R217: Öztürk, 2012; R218: Öztürk et al., 2012; R219: Tural and Yokeş, 2012; R220: Yokeş et al., 2012; R221: Çınar et al., 2012a; R222: Çınar et al., 2012b; R223: Aslan-Cihangir and Ovalis, 2013; R224: Ovalis and Mifsud, 2013; R225: Öztürk, 2013; R226: Öztürk et al., 2013; R227: Pusateri et al., 2013; R228: Tisselli and Giunchi, 2013; R229: Yokeş and Demir, 2013; R230: Öztürk and Bitlis-Bakır, 2013a; R231: Öztürk and Bitlis-Bakır, 2013b; R232: Öztürk and Bitlis-Bakır, 2013c; R233: Peñas and Rolán, 2013; R234: Akyol and Sağlam, 2014; R235: Borges et al., 2014; R236: Doğan et al., 2014; R237: Ovalis and Mifsud, 2014; R238: Öztürk, 2014; R239: Çınar et al., 2012–2015; R240: Zenetos and Ovalis, 2014.

**Remarks (\*\*)**

1. *Mytilaster marioni* occurs mainly in mesohaline and hyposaline shore lakes in the basins of the Mediterranean Sea, and the species has no distribution in offshore habitats (Öztürk et al., 2002). In Turkey, it was found in Lake Bafa (14‰–17‰), which is isolated from the sea at the present day. The species was probably introduced into the lake as a result of fishing efforts or by migrating aquatic birds (Öztürk et al., 2002).
2. The earlier references including *Octopoteuthis sicula* do not include the ventral mantle photophores as the species diagnostic feature. This was the reason our specimen (mantle length: 45 mm) sampled from a depth of 730 m in Gökova Bay (36°51'0 N/27°40'4 E) was identified as *Octopoteuthis megaptera* (Salman et al. 1999), although the species had 2 photophores on the ventral edge of the mantle. The correct identification of this record would be *Octopoteuthis sicula*.



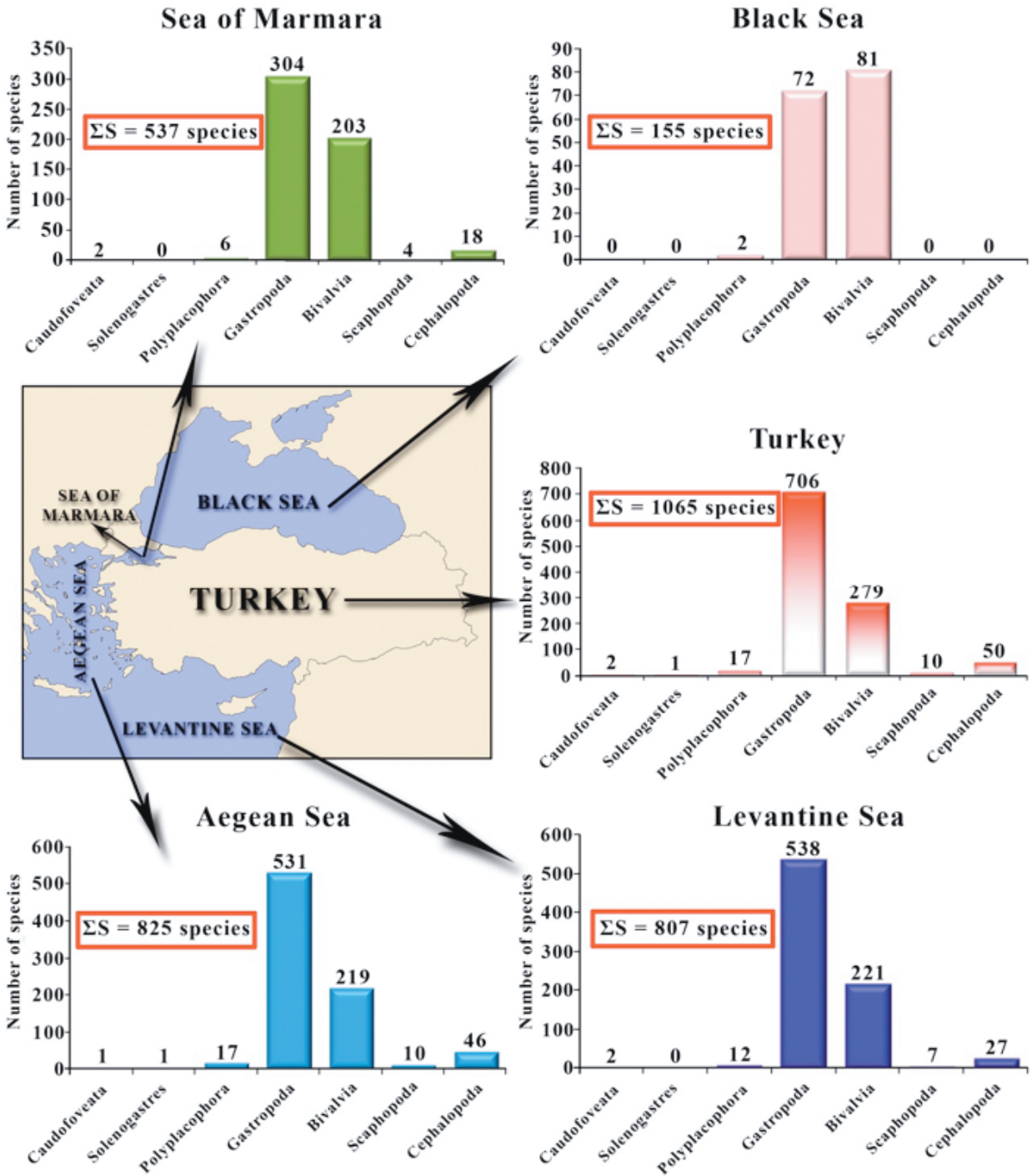


Figure 1. Total number of the molluscan species distributed along the Turkish coasts according to classes, and the species of each class according to the different seas.

of Marmara (537 species), and Black Sea (155 species) (Figure 2). Between the straits, the Dardanelles, connecting the Aegean Sea to the Sea of Marmara, is in front of the Bosphorus, with 308 reported species. The number of species significantly decreases towards the Black Sea.

Among the molluscan classes having representatives in the Turkish seas, the class Gastropoda dominates in all the seas, except the Black Sea, with the highest number species in the Levantine Sea (538 species), followed by the Aegean Sea (531 species) (Figure 1). In each sea the class Bivalvia

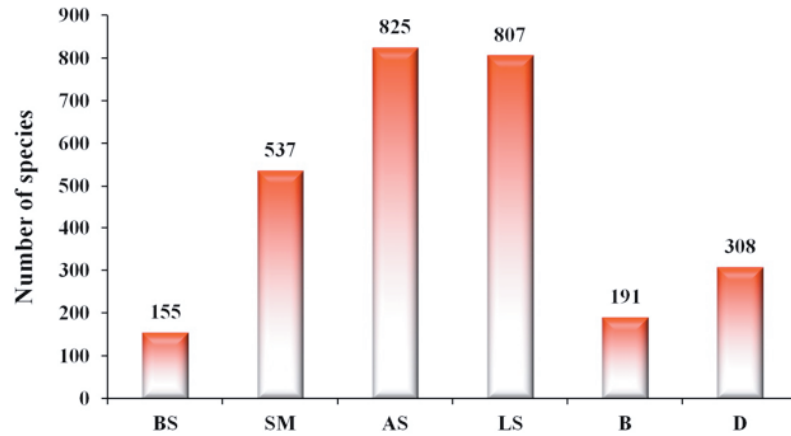


Figure 2. The number of mollusc species according to the seas.

comes after the class Gastropoda, except in the Black Sea, where the class Bivalvia dominates. All of the classes are represented in the Aegean Sea only. The Levantine Sea and the Sea of Marmara lack recorded Solenogastres species, whereas in the Black Sea only Polyplacophora, Gastropoda, and Bivalvia species are present.

Of the species listed in Table 1, *Timoclea roemeriana* (Issel, 1869) (Bivalvia), and *Sepiolo ligulata* Naef, 1912 and *Abraliopsis morisii* (Vérany, 1839) (Cephalopoda) are new records for the Turkish mollusc fauna; *Leptochiton boettgeri* Sulc, 1934 (Polyplacophora); *Cerithium protractum* Bivona, Ant in Bivona, And., 1838; *Similiphora similior* (Bouchet & Guillemot, 1978); *Cerithiopsis diadema* Monterosato, 1874; *Rissoa guerinii* Récluz, 1843; *Crepidula moulinsii* Michaud, 1829; *Crepidula unguiformis* Lamarck, 1822; *Bela zenetouae* (van Aartsen, 1988); *Doto coronata* (Gmelin, 1791) (Gastropoda); *Lima marioni* Fischer, 1882; and *Limaria loscombi* (Sowerby G.B. I, 1823) (Bivalvia) are new records for the Turkish Levantine coast; and *Acirsa subdecussata* (Cantraine, 1835) and *Monotygmata lauta* (Adams, A., 1853) (Gastropoda) are new records for the Turkish Aegean coast.

Of the new records of bivalves, a single specimen and 2 valves of *Timoclea roemeriana* (Figure 3) were found in a detritic material sampled at a depth of 16 m in a locality between İskenderun Bay and Samandağ (Levantine coast of Turkey), in June 2010. The species was first recorded off the coast at Haifa (Israel) in 1997 (Zenetos et al., 2003). In the same material 2 specimens of *Ervilia scaliola* Issel, 1869 were also found (Figure 4). The species was previously encountered at Taşucu (Levantine coast of Turkey) by Zenetos and Ovalis (2014).

Of the cephalopods, *Sepiolo ligulata* (1♂ with mantle length 15 mm and 1♀ with mantle length 14 mm) were recorded along the Turkish Aegean coast, at a depth of 320

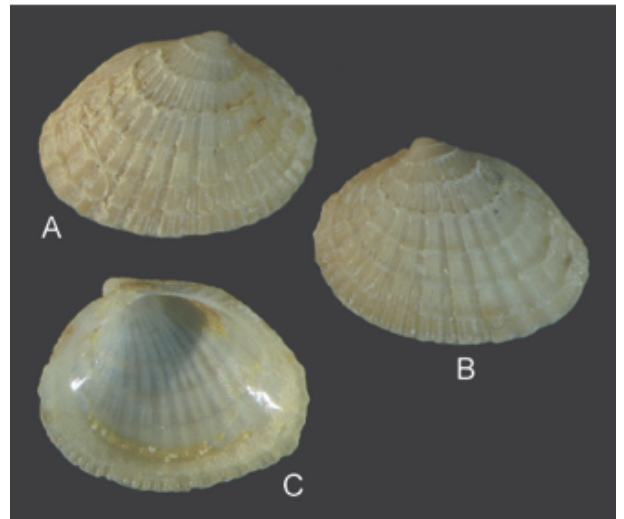
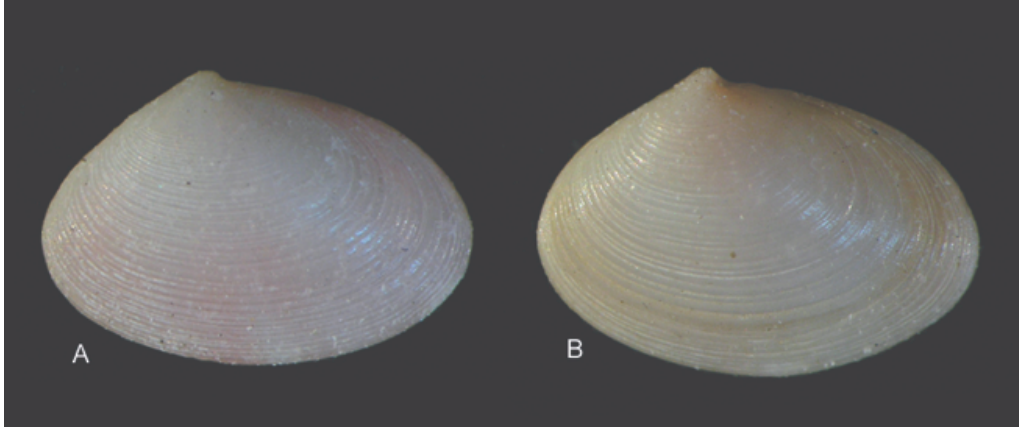


Figure 3. *Timoclea roemeriana* (Issel, 1869): outside views of a specimen (A, B) and inside view of the right valve (C) (A = B = 5.9 × 3.6 mm). Photo: Bilal Öztürk.

m on 20 May 1992 (38°48'11"N, 26°22'13"E). The other species, *Abraliopsis morisii* (1♂ with mantle length 51 mm and 1♀ with mantle length 55 mm), was sampled from a depth of 480 m in Fethiye Bay (Levantine Sea), by using a deep trawl.

During the compilation of the present checklist some species have not been included, considering that they might be doubtful records, misidentifications, or not valid species. One of the important works performed in the Sea of Marmara long before is that by Ostroumoff (1896). Besides many valid mollusc species, the author also reported some new species (i.e. *Cerithiolum*



**Figure 4.** *Ervilia scaliola* Issel, 1869: outside view of 2 specimens (A = 4.1 × 2.8 mm; B = 3.8 × 2.7 mm). Photo: Bilal Öztürk.

*geniculatum*, *Rissoa minuscula*, *Cryptaxis imperforatus*, *Fusus proppontiacus*, *Auriculina cingulata*, *Parthenia costulata*, *Parthenia imperfecta*, *Parthenia reticulata*, and *Odostomella pupoides*) from the area with no figures or adequate descriptions. We have considered all of them as *nomen nudum* and excluded them from the present checklist. In addition, some species recorded in different

areas (i.e. *Tonicella rubra* in the Aegean Sea, *Diodora ruppellii* in the Sea of Marmara, *Mitra nigra* in the Levantine and Aegean seas, *Mytilus edulis* in the Black Sea etc.) have been considered as suspicious records, probably based on misidentification or incorrect information. We tried to collect those species of this status in Table 2, with a remark regarding our estimation.

**Table 2.** The species previously reported from the Turkish coasts and excluded from the present checklist, being considered doubtful species, misidentifications, or incorrect information.

Group/Species	Sea	Reference	Remark
<b>POLYPLACOPHORA</b>			
<i>Callochiton septemvalvis</i> (Montagu, 1803) ( <i>C. euplaea</i> , Costa, O.G., 1829)	SM	Demir (2003)	? <i>Chiton corallinus</i> (Risso, 1826)
<i>Tonicella rubra</i> (Linnaeus, 1767)	AS	Forbes (1844)	The species has no distribution in the Mediterranean Sea
<b>GASTROPODA</b>			
<i>Patella rustica</i> Linnaeus, 1758	SM	Balkis (1992)	? <i>Patella caerulea</i> Linnaeus, 1758
<i>Patella ulyssiponensis</i> Gmelin, 1791	BS, SM	Demir (2003)	? <i>Patella caerulea</i> Linnaeus, 1758
<i>Diodora ruppellii</i> (Sowerby, G.B. I, 1835)	SM	Tortonese (1959)	The species has no distribution in the region The species has no distribution at shallow depths. The photographed specimen by the authors is probably a juvenile of the genus <i>Diodora</i> .
<i>Puncturella noachina</i> (Linnaeus, 1771)	LS	Falakalı-Mutaf et al. (2007)	
<i>Anatoma aspera</i> (Philippi, 1844) ( <i>Scissurella aspera</i> Philippi, 1844)	SM	Ostroumoff (1896)	? <i>Anatoma crispata</i> (Fleming 1828)
<i>Haliotis tuberculata tuberculata</i> Linnaeus, 1758	LS	Demir (2003)	<i>H. tuberculata lamellosa</i> Lamarck, 1822
<i>Bogia labronica</i> (Bogi, 1984)	LS	Falakalı-Mutaf et al. (2007)	The species has no distribution at shallow depths
<i>Copulabysia corrugata</i> (Jeffreys, 1883)	LS	Falakalı-Mutaf et al. (2007)	The species has no distribution at shallow depths
<i>Gibbula umbilicaris</i> (Linnaeus, 1758)	MS	Koutsoubas et al. (1997)	incorrect information

Table 2. (Continued).

<i>Phorcus richardi</i> (Payraudeau, 1826)	MS	Koutsoubas et al. (1997)	incorrect information
<i>Tricolia miniata</i> (Monterosato, 1884)	LS	Falakalı-Mutaf et al. (2007)	The photographed specimen probably is a juvenile of <i>Tricolia pullus pullus</i> (Linnaeus, 1758)
<i>Tricolia speciosa</i> (Megerle von Mühlfeld, 1824)	SM, Bosphorus	Demir (1952, 2003)	? <i>Tricolia tenuis</i> (Michaud, 1829)
<i>Mesalia varia</i> (Kiener, 1844)	AS	Demir (2003)	? doubtful record
<i>Echinolittorina punctata</i> (Gmelin, 1791)	AS (İzmir Bay)	Kocataş (1978)	The species is mostly distributed along the Levantine coast
<i>Alvania corona</i> Nordsieck, 1972	LS	Demir (2003)	? doubtful record
<i>Onoba semicostata</i> (Montagu, 1803)	AS	Demir (2003)	? doubtful record
<i>Rissoa lilacina</i> Récluz, 1843	AS	Kocataş (1978)	? <i>Rissoa violacea</i> Desmarest, 1814
<i>Setia kuiperi</i> (Verduin, 1984)	AS	Demir (2003)	?
<i>Setia lacourti</i> (Verduin, 1984)	SM	Demir (2003)	?
<i>Setia pulcherrima</i> (Jeffreys, 1848)	BS	Çulha et al. (2010)	?
<i>Cerithiopsis bilineata</i> (without author name)	AS	van Aartsen and Kinzelbach (1990)	? <i>Dizoniopsis bilineata</i> (Hoernes, 1848)
<i>Charonia lampas</i> (Linnaeus, 1758)	AS	Öztürk et al. (1998)	? <i>Charonia variegata</i> (Lamarck, 1816)
<i>Caecum glabrum</i> (Montagu, 1803)	SM	Oberling (1969–1971)	It had been probably mistaken for the other <i>Caecum</i> species distributed in the region.
<i>Hexaplex kusterianus</i> (Tapparone-Canefri, 1875)	LS	Demir (2003)	? <i>Hexaplex pecchiolianus</i> (d'Ancona, 1871)
<i>Murex exigua</i> (without author name)	SM	Jakubova (1848)	?
<i>Trophonopsis alboranensis</i> (Smriglio, Mariottini & Bonfitto, 1997)	LS	Falakalı-Mutaf et al. (2007)	The species has no distribution at shallow depths.
<i>Trophonopsis barvicensis</i> (Johnston, 1825)	SM, AS	Demir (2003)	In the Atlantic Ocean only (Houart, 2001)
<i>Mitra nigra</i> (Gmelin, 1791)	LS, AS	Demir (2003)	The species has no distribution along the European coasts (CLEMAM)
<i>Cymbium olla</i> (Linnaeus, 1758)	LS	Demir (2003)	?
<i>Nassarius circumcinctus</i> (Adams, A., 1852)	AS	Demir (2003)	? doubtful record
<i>Fusinus labronicus</i> (Monterosato, 1884)	SM, AS, LS	Demir (2003)	In the western Mediterranean only (Buzzurro and Russo, 2007)
<i>Fusinus parvulus</i> (Monterosato, 1884) ( <i>F. rudis</i> )	AS	Öztürk et al. (2001)	<i>Muricopsis cristata</i> (Brocchi, 1814) (according to Buzzurro and Russo, 2007)
<i>Clathromangelia strigilata</i> Pallary, 1904	AS	Demir (2003)	? doubtful record
<i>Mitromorpha cachiai</i> Mifsud, 2001	LS	Falakalı-Mutaf et al. (2007)	? doubtful record
<i>Mitromorpha mediterranea</i> Mifsud, 2001	LS	Falakalı-Mutaf et al. (2007)	The photographed specimen seems as a juvenile of <i>Pisania striata</i> , which is abundant at shallow depths.
<i>Bela menkhorsti</i> van Aartsen, 1988	LS	Falakalı-Mutaf et al. (2007)	The photographed specimen is a juvenile of the genus <i>Nassarius</i> .
<i>Propebela turricula</i> (Montagu, 1803)	LS	Mutlu and Ergev (2012)	? doubtful record
<i>Raphitoma bofilliana</i> (Sullioti, 1889)	AS	Demir (2003)	?
<i>Raphitoma contigua</i> (Monterosato, 1884)	SM	Demir (2003)	?
<i>Teretia anceps</i> (Eichwald, 1830)	SM	Ostroumoff (1896)	? <i>Teretia teres</i> (Reeve, 1844)

**Table 2.** (Continued).

<i>Gymnobela watsoni</i> (Dautzenberg, 1889)	LS	Falakalı-Mutaf et al. (2007)	The photographed specimen is a juvenile of <i>Conomurex persicus</i> (Swainson, 1821)
<i>Lusitanops cingulatus</i> Bouchet & Warén, 1980	LS	Falakalı-Mutaf et al. (2007)	The species has no distribution at shallow depths. The photographed specimen belongs to the genus <i>Nassarius</i> .
<i>Chrysalida</i> cf. <i>monozona</i> (Brusina, 1869)	SM	Oberling (1960-62)	? doubtful record
<i>Chrysalida simulans</i> (Chaster, 1898)	AS	van Aartsen and Kinzelbach (1990)	? <i>Parthenina indistincta</i> (Montagu, 1808)
<i>Turbonilla rectogallica</i> Sacco, 1892	AS	Yokeş and Demir (2013)	?
<i>Japonacteon pusillus</i> (MacGillivray, 1843)	LS	Bitlis et al. (2012)	It has no distribution at shallow depths.
<i>Cylichnina multiquadrata</i> (Oberling, 1970)	LS	Buzzurro and Greppi (1996)	Nominal taxa in need of reassessment (CLEMAM)
<i>Ringicula minutula</i> Locard, 1897	AS, SM	Demir (2003)	It has no distribution in the Mediterranean
<i>Ringicula terquemi</i> Morlet, 1880	İzmir Bay (AS)	Schirò (1980)	Nominal taxa in need of reassessment (CLEMAM)
<i>Atys brocchii</i> (Michelotti, 1847)	AS, SM	Demir (2003)	Fossil species, no recent records (CLEMAM)
<i>Doris tuberculata</i> (Cuvier, 1804)	SM	Demir (1952), Kabasakal et al. (2011)	Nominal taxa in need of reassessment (CLEMAM)
<i>Jorunna</i> cf. <i>atypha</i> Bergh, 1881	AS	Okuş et al. (2006)	Nominal taxa in need of reassessment (CLEMAM)
<b>BIVALVIA</b>			
<i>Mytilus edulis</i> (Linnaeus, 1758)	Bosphorus	Ostroumoff (1894)	? <i>Mytilus galloprovincialis</i> Lamarck, 1819
<i>Ostrea uncinata</i> Lamarck, 1806	Dardanelles	Pallary (1917)	? <i>Ostrea edulis</i> Linnaeus, 1758
<i>Lucina reticulata</i> Poli, 1791	SM	Ostroumoff (1896)	? <i>Ctena decussata</i> (Costa O.G., 1829)
<i>Lasaea pumila</i> (Wood, 1851)	SM	Ostroumoff (1896)	a fossil species (van Aartsen and Carrozza, 1997)
<i>Cardium coloratum</i> (Eichwald, 1829) (= <i>Monodacna colorata</i> )	Bosphorus	Ostroumoff (1894)	It is not a marine species
<i>Cardium ostroumovi</i> (Mil.)	SM	Ostroumoff (1896)	We had no success finding its valid name.
<i>Cerastoderma edule</i> (Linnaeus, 1758)	Bosphorus	Ostroumoff (1894)	? <i>Cerastoderma glaucum</i> (Bruguière, 1789)
<i>Petricola (Lajonkairia) substriata</i> (Montagu, 1808)	AS	Demir (2003)	<i>Nomen dubium</i> (WoRMS)
<b>SCAPHOPODA</b>			
<i>Antalis novemcostata</i> (Lamarck, 1818)	SM, AS	Forbes (1844), Demir (1952)	? <i>Antalis inaequicostata</i> (Dautzenberg, 1891)

Most of the molluscs distributed along the Turkish coasts inhabit the littoral biotopes at depths up to 100 m and about 200 species were reported at depths over 200 m (Table 1). *Benthonella tenella*, *Odostomia silesui*, *Turbonilla micans*, *Turbonilla paucistriata*, *Yoldiella striolata*, and *Myrtea amorphia* are some of the species with the deepest distribution. There is also variation in the habitat preference of the mollusc species, such as soft substrate, hard substrate or, as is valid for most of the species, inhabiting both soft

and hard substrata. Some of them, however, are parasite living (Pyramidellidae and Eulimidae) or pelagic species (Pteropoda, Cephalopoda).

Of the species listed in the Table 1, 118 taxa are alien species that originated outside the Mediterranean Sea. In a checklist published previously by Çınar et al. (2011), 104 alien species were reported from the Turkish coasts, of which *Hinemoa cylindrica* and *Murchisonella columna* are given in the present study under their revised nomenclature.



The specimens of *Hinemoa cylindrica*, previously reported from the Levantine coast of Turkey, were re-described as *Oscilla galilae* by Bogi et al. (2012). There is a similar status to the specimens of *M. columna* that originated along the Levantine coast, which have been re-described as a new species (*Murchisonella mediterranea*) by Peñas and Rolán (2013), and it was found to be unrelated to the Red Sea species *M. columna*.

Since the last checklist by Çınar et al. (2011), 14 alien mollusc species have been encountered in different studies performed along the Turkish coasts and the total number of alien species increased to 118 (Table 1), of which 111 species are known to be distributed along the Turkish Levantine coast, followed by the Aegean coast of Turkey (37 species) (Figure 5).

The report of mollusc species of the Turkish coasts shows a sharp increase in the years 1880–1910 and 1985–2014 (Figure 6). Forbes (1844), Colombo (1885), and Ostroumoff (1894, 1896) are the authors with major contributions to the former increasing, whereas, in the second period, the studies by Kocataş (1978) in İzmir Bay, van Aartsen and Kinzelbach (1990) at İztuzu (Aegean Sea), Buzzurro and Greppi (1996) at Taşucu (Levantine coast), and Demir (2003) along all the Turkish coasts, are the works with significant contributions to the augmentation of the number of species.

Regarding the studies concerning all the molluscs, the number of species reported from the Turkish coasts is shown in Figure 7. There are 14 grids with over 100 reported species. İskenderun Bay, Taşucu, and Fethiye Bay

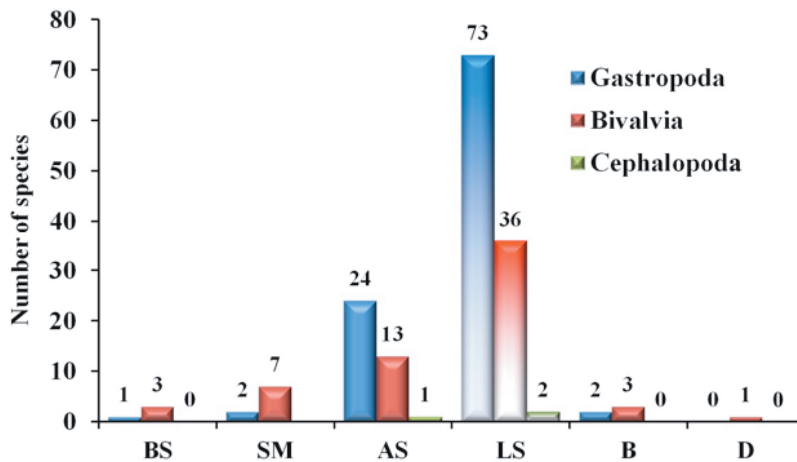


Figure 5. The alien species according to the classes distributed along the Turkish coasts.

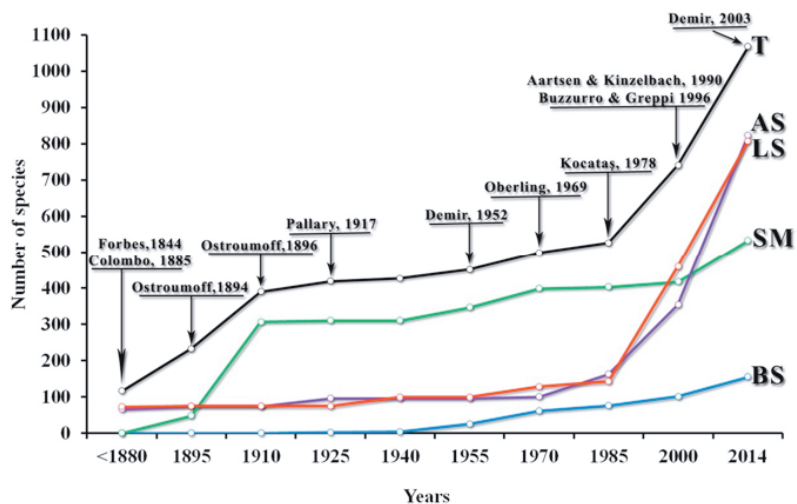


Figure 6. The number of reported mollusc species according to years and the authors with major contribution.

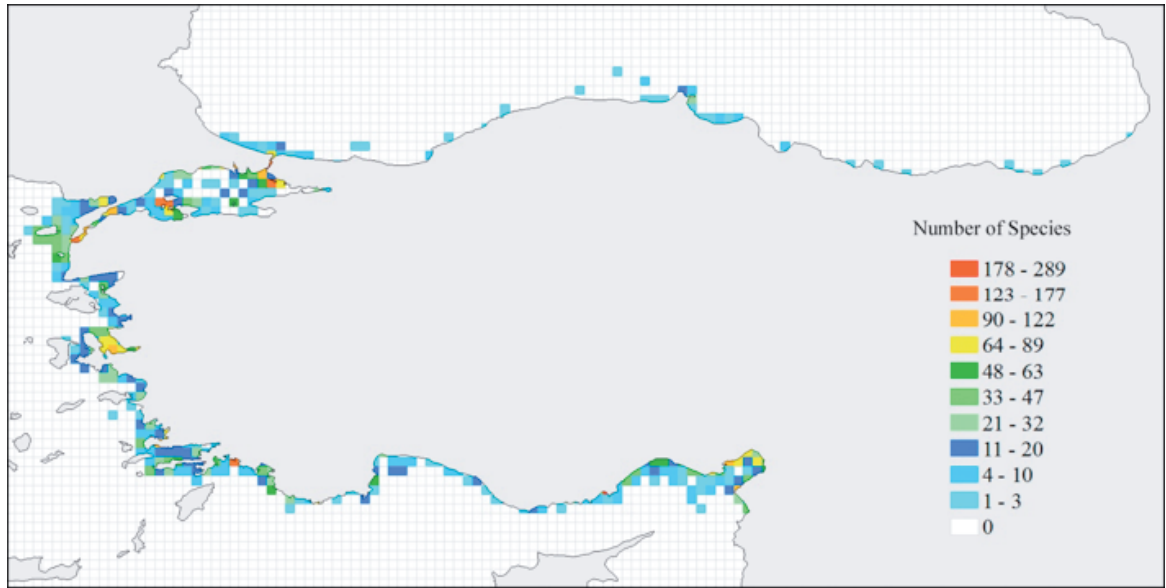


Figure 7. Map showing the distribution of mollusc species along the coasts of Turkey.

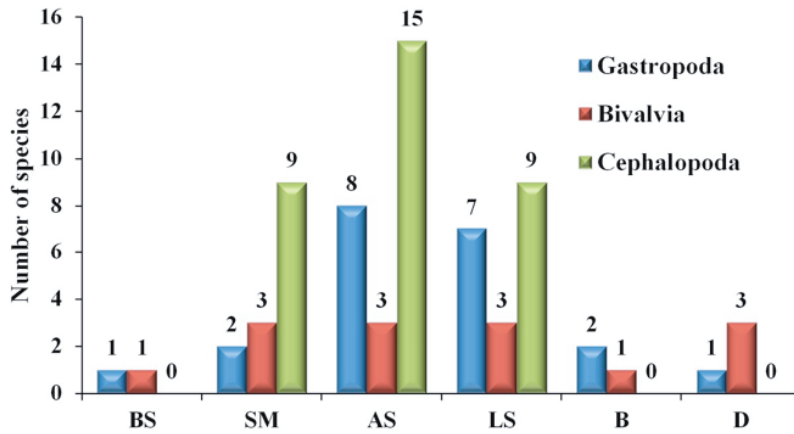
(Levantine Sea); Gökova Bay (around Bodrum), Güllük Bay (around Torba), and İzmir Bay (Aegean Sea); the Dardanelles, some localities around the islands near the Dardanelles and Bosphorus in the Sea of Marmara, and the Bosphorus can be indicated as hot spot areas for molluscs. If we take into consideration only the cephalopods, which are pelagic or demersal living molluscs, it is clear that species diversity along the Aegean coast of Turkey and in the Sea of Marmara has been studied much more than that along the Levantine coast (Figure 8). As can be seen

in Figure 8, the distribution of cephalopods is limited to half of the Sea of Marmara, with no records of cephalopod species in the other part of the Sea of Marmara close to the Bosphorus or in the Black Sea.

Among the molluscs listed from the Turkish coasts, 27 species (*Haliotis tuberculata lamellosa*, *Cerithium vulgatum*, *Dendropoma petraeum*, *Erosaria spurca*, *Luria lurida*, *Zonaria pyrum*, *Tonna galea*, *Ranella olearium*, *Lithophaga lithophaga*, *Pinna nobilis*, *Pholas dactylus*, *Eledone cirrhosa*, *Sepia officinalis*, *Sepia elegans*,



Figure 8. Map showing the distribution of cephalopod species along the coasts of Turkey.



**Figure 9.** The species recognised as endangered or threatened according to IUCN (2014) Red List and Barcelona/Bern Conventions.

*Sepia orbignyana*, *Sepioloa rondestii*, *Sepioloa intermedia*, *Sepioloa ligulata*, *Sepioloa robusta*, *Sepioloa steenstrupiana*, *Rondeletiola minor*, *Sepietta oweniana*, *Sepietta neglecta*, *Sepietta obscura*, *Rossia macrosoma*, *Neorossia caroli*, and *Heteroteuthis dispar*) are recognised as endangered or threatened according to the IUCN Red List and Barcelona/Bern Conventions. Of those, 26 species are known to be distributed along the Aegean coast of Turkey, 19 species along the Levantine coast, 14 species in the Sea of Marmara, and 2 species along the Black Sea coast of Turkey (Figure 9).

As a result, owing to intensive studies performed along the Turkish coasts in recent years, the number of mollusc

species distributed along the Turkish coasts has increased from 745 species reported in the previous checklist by Öztürk and Çevik (2000) to 1065 species included in the present study.

#### Acknowledgements

The authors are much indebted to 2 anonymous referees for their constructive comments on the manuscript, and to Fikret Özer for providing the detritic material in which were found the bivalves *T. roemeriana* and *Ervilia scaliola*.

Some species in this study were recorded within the project 111Y268 supported by the Scientific and Technological Research Council of Turkey.

#### References

- Aartsen JJ van (1977). European Pyramidellidae: I. *Chrysallida*. Conchiglia 13: 49–64.
- Aartsen JJ van (2002). Indo-Pacific migrants into the Mediterranean. 1. *Gibborissoa virgata* (Philippi, 1849). La Conchiglia 303: 56–58.
- Aartsen JJ van (2006). Indo-Pacific migrants into the Mediterranean. 4. *Cerithidium diplax* (Watson, 1886) and *Cerithidium perparvulum* (Watson, 1886) (Gastropoda, Caenogastropoda). Basteria 70: 33–39.
- Aartsen JJ van (2009). Indo-Pacific migrants into the Mediterranean. 61 *Monotigma fulva* (A. Adams, 1853) (Gastropoda, Opisthobranchia, Pyramidellidae). Basteria 73: 97–98.
- Aartsen JJ van, Barash A, Carrozza F (1989). Addition to the knowledge of the Mediterranean Mollusca of Israel and Sinai. Boll Malacologico 25: 63–76.
- Aartsen JJ van, Carrozza F, Lindner G (1990). *Acteocina mucronata* (Philippi, 1849), a recent Red Sea immigrant species in the Eastern Mediterranean. Boll Malacologico 25: 285–288.
- Aartsen JJ van, Fehr-de Wal MC (1978). The subfamily Mangeliinae Fisher, 1887 in the Mediterranean. Conchiglia 14: 97–110.
- Aartsen JJ van, Goud J (2000). European Marine Mollusca: notes on less well-known species. XV.1. Notes on Lusitanian species of *Parvicardium* Monterosato, 1884, and *Afrocardium richardi* (Audouin, 1826) (Bivalvia, Heterodonta, Cardiidae). Basteria 64: 171–186.
- Aartsen JJ van, Goud J (2006). Indo-Pacific migrants into the Mediterranean. 3.1. *Alys angustatus* Smith, 1872 (Gastropoda, Opisthobranchia). Basteria 70: 29–31.
- Aartsen JJ van, Hori S (2006). Indo-Pacific migrants into the Mediterranean. 2.1. *Monotigma lauta* (A. Adams, 1853) and *Leucotina natalensis* Smith, 1910 (Gastropoda, Pyramidellidae). Basteria 70: 1–6.
- Aartsen JJ van, Kinzelbach R (1990). Marine molluscs from the Iztuzu beach near Dalyan (Mediterranean coast of Turkey). Zool Middle East 4: 103–112.



- Aartsen JJ van, Recevik M (1998). Two more Indo-Pacific species found in the Mediterranean. *La Conchiglia* 30: 13–15.
- Aker V, Özel İ, Pulat İ (2007). Ege Denizi kıyılarında tespit edilen bazı pelajik Gastropoda türleri. *Turkish Journal of Aquatic Life*, 3–5 (5–8): p 1 (in Turkish).
- Akyol O, Sağlam C (2014). *Armina maculata* Rafinesque, 1814 (Nudibranchia: Arminidae): a new record for the Turkish mollusc fauna. *Turk J Zool* 38: 508–509.
- Akyüz EF (1957). Observations on the Iskenderun Red Mullet (*Mullus barbatus*) and Its Environment. General Fisheries Council for the Mediterranean, Document technique Technical paper 38: 305–317.
- Albayrak S (2001). Prosobranch gastropods of the Imbros Island (NE Aegean Sea). *Acta Adriat* 42: 35–42.
- Albayrak S (2002). Bivalvia fauna of the Imbros Island (NE Aegean Sea). Istanbul University Faculty of Science, The Journal of Biology 65: 1–24.
- Albayrak S (2003). On the Mollusca fauna of the Black Sea near Istanbul. *Zool Middle East* 30: 69–75.
- Albayrak S (2010). Distribution of alien bivalve species in the soft bottom of Iskenderun Bay (Turkey, NE Levantine Sea). *Cah Biol Mar* 51: 45–53.
- Albayrak S (2011). Alien marine bivalve species reported from Turkish seas. *Cah Biol Mar* 52: 107–118.
- Albayrak S, Aslan H, Balkis H (2001). A contribution to the Aegean Sea fauna: *Ruditapes philippinarum* (Adam & Reeve, 1850) [Bivalvia: Veneridae]. *Israel J Zool* 47: 299–300.
- Albayrak S, Balkis N (1996a). Benthic prosobranch gastropods of the Bosphorus. Istanbul University Faculty of Science, The Journal of Biology 17–26.
- Albayrak S, Balkis N (1996b). Bivalve fauna of the Bosphorus. Istanbul University Faculty of Science, The Journal of Biology 59: 1–15.
- Albayrak S, Balkis H, Balkis N (2004). Bivalvia (Mollusca) fauna of the Sea of Marmara. *Acta Adriat* 45: 9–26.
- Albayrak S, Çağlar S (2006). On the presence of *Siphonaria belcheri* Hanley, 1858 (Gastropoda: Siphonariidae) and *Septifer bilocularis* (Linnaeus, 1758) (Bivalvia: Mytilidae) in the Iskenderun Bay (SE Turkey). *Aquat Invas* 1: 292–294.
- Albayrak S, Çeviker D (2001). Two new extra-Mediterranean molluscs from Southeast Turkey: *Siphonaria belcheri* Hanley, 1858 (Gastropoda: Siphonariidae) and *Septifer bilocularis* (Linnaeus, 1758) (Bivalvia: Mytilidae). *Israel J Zool* 47: 297–298.
- Amati B, Oliverio M (1987). *Alvania datchaensis* sp. n. *Notiz CISMA* 10: 46–53.
- Arda Y, Koşucuoğlu D, Boyacı B, Kuruçayırılı E, Akyıldız AÇ, Demir C, Dervişoğlu R, Karacık B, Yokeş B (2004). Toplarönü Burnu (İbrice-Saros Körfezi) *Eunicella singularis* ve *Alcyonium acaule* populasyonlarının son durumu. *Sualtı Bilim ve Teknoloji Toplantısı*, 26–28 Kasım 2004, İstanbul (in Turkish).
- Aslan-Cihangir H, Ovalis P (2013). Seasonal variations and structure of the molluscan assemblage in the Canakkale Strait (Turkey). *Acta Zool Bulgar* 65: 233–250.
- Aydın Ö, Önen M, Doğan A, Dağlı E, Sezgin M, Katağan T, Öztürk B, Kırkım F (2007). Benthic invertebrate fauna of Urla Harbour (Izmir Bay, Aegean Sea) and its vicinity. *EU J Fish Aquat Sc* 24: 71–81.
- Bacescu MC, Müller GI, Gomoiu MT (1971). *Ecologie Marina. Cercetari de Ecologie Bentala in Marea Neagra*. Editura Academiei Republicii Socialiste Romania 4: 357.
- Balkis H (1992). A preliminary study on the macrobenthos of littoral of the Island of Marmara. *Institute of Marine Sciences and Geography, Istanbul Univ* 9: 309–327.
- Barash A, Danin Z (1973). The Indo-Pacific species of Mollusca in the Mediterranean and notes on a collection from the Suez canal. *Israel J Zool* 21: 301–374.
- Barash A, Danin Z (1982). Mediterranean Mollusca of Israel and Sinai. Composition and distribution. *Israel J Zool* 31: 86–118.
- Barash A, Danin Z (1992). Annotated List of Mediterranean Molluscs of Israel and Sinai. The Israel Academy of Sciences and Humanities. Jerusalem, Israel, 405 p.
- Bitlis B, Öztürk B, Doğan A, Önen M (2010). Systematic and ecological features of some Mollusca species distributed along the Marmara Sea coast. *Symposium of Sea of Marmara 2010; 2–26 September 2010; Istanbul*, pp. 253–265.
- Bitlis-Bakır B, Öztürk B, Doğan A, Önen M (2012). Mollusc fauna of Iskenderun Bay with a checklist of the region. *Turk J Fish Aquat Sc* 12: 171–184.
- Blöcher M (1983). A dead specimen of *Palmadusta gracilis* (Gaskoin, 1849) found in the Mediterranean. *La Conchiglia* 10: 166–167.
- Bogi C, Buzzurro G, Greppi E (1995). Presenza di *Murchisonella columna* (Hedley, 1907) nel Mediterraneo Orientale. *Boll Malacologico* 31: 69–76 (in Italian).
- Bogi C, Karhan SÜ, Yokeş MB (2012). *Oscilla galilae*, a new species of Pyramidellidae (Mollusca, Gastropoda, Heterobranchia) from the eastern Mediterranean. *Iberus* 30: 1–6.
- Borges LMS, Sivrikaya H, Cragg SM (2014). First records of the warm water shipworm *Teredo bartschi* Clapp, 1923 (Bivalvia, Teredinidae) in Mersin, southern Turkey and in Olhao, Portugal. *BioInvasions Records* 3: 25–28.
- Bouchet P (2006). The magnitude of marine biodiversity. In: Duarte CM, editor, *The Exploration of Marine Biodiversity: Scientific and Technological Challenges*. Fundación BBVA, Bilbao: pp. 31–62.
- Brunetti M, Buzzurro G, Cirone G, Greppi E (1998). Notes on the genus *Hexaplex*. *La Conchiglia* 30: 49–52, 60.
- Butakov E, Chuhchin VD, Cherkasova MB, Lelekov SG (1997). Determinator of Gastropoda of the Black Sea. *IBSS NASU, Sevastopol*. p. 127.
- Buzzurro G, Greppi E (1994). Presenza di *Smaragdella souverbiana* (Montrouzier, 1863) nel Mediterraneo Orientale. *Boll Malacologico* 29: 319–321 (in Italian).

- Buzzurro G, Greppi E (1996). The Lessepsian molluscs of Tasucu (South-East Turkey). *La Conchiglia* 3: 3–22.
- Buzzurro G, Cecalupo A (2004). Descrizione di una nuova specie di ceritiopsidae per le coste turche. *Boll Malacologico* 40: 77–79 (in Italian).
- Buzzurro G, Cecalupo A (2006). I molluschi lessepsiani di Tasucu (Turchia sud-orientale): descrizione di *Parviturbo dibellai* n. sp. (Gastropoda: Trochidea: Skeneidae). *Boll Malacologico* 42: 27–32 (in Italian).
- Buzzurro G, Russo P (2007). Mediterranean *Fusinus*, A revision of the recent Mediterranean species of the genus *Fusinus* Rafinesque, 1815 (Gastropoda: Fasciolaridae). 1st ed. Grafiche ATA, Milano, 280 p.
- Buzzurro G, Engl W, Tümtürk I (1995). Bivalven und Gastropoden der europäischen Meere (4) *Ergalatax martensi* (DALL 1923) (Muricidae), ein neuer Lessepsischer Einwanderer von der türkischen Südküste. *C Conch Inform* 27: 17–18 (in German).
- Caspers H (1968). La macrofaune benthique du Bosphore et les problèmes de l'infiltration des éléments méditerranéens dans la mer Noire. *Rapp Comm Int Mer Médit* 19: 107–115 (in French).
- Cecalupo A, Robba E (2010). The identity of *Murex tubercularis* Montagu, 1803 and description of one new genus and two new species of the Cerithiopsidae (Gastropoda: Triphoroidea). *Boll Malacologico* 46: 45–64.
- Çevik C, Cavas L, Ergüden D, Turan C (2012). A second observation of *Dendrodoris fumata* (Rüppell & Leuckart, 1830) from the Mediterranean Sea (Nudibranchia: Dendroborididae). *Zool Midd East* 56: 148–149.
- Çevik C, Doğan A, Önen M, Zenetos A (2005). First record of the Indo-Pacific species *Electroma vexillum* (Mollusca: Bivalvia: Pterioidea) in the eastern Mediterranean. *JMBA Biodivers Rec* p. 1.
- Çevik C, Ergüden D (2004). Fauna of the Polyplacophora (Mollusca) between Samandağ (Hatay) and Anamur (Mersin) of the Northeast Mediterranean Coasts of Turkey. In: Öztürk B, Salman A, editor. 1st National Malacology Congress; 1–3 September 2004; Turkish Journal of Aquatic Life, İstanbul, Turkey, pp. 87–91.
- Çevik C, Öztürk B (2001). A new lessepsian mollusc *Hypselodoris infucata* (Ruppell & Leuckart, 1828) (Gastropoda: Nudibranchia) for the coasts of Turkey. *Turk J Zool* 25: 27–30.
- Çevik C, Öztürk B, Buzzurro G (2001). The presence of *Crassostrea virginica* (Gmelin, 1791) and *Saccostrea commercialis* (Iredale & Roughley, 1933) in the Eastern Mediterranean Sea. *La Conchiglia* 33: 25–28.
- Çevik C, Sarihan E (2004). Malacofauna of the Iskenderun Bay. In: Öztürk B, Salman A, editors. 1st National Malacology Congress; 1–3 September 2004; Turkish Journal of Aquatic, İstanbul, Turkey, pp 93–97.
- Çevik C, Kideyş A, Toklu B, Ergüden D, Sarihan E (2006). New pelagic Gastropoda species encountered on the Turkish coast on the Levant Sea. *Turk J Vet Anim Sci* 30: 151–157.
- Çeviker D (2001). Recent immigrant bivalves in the northeastern Mediterranean off Iskenderun. *La Conchiglia* 33: 39–46.
- Çeviker D, Albayrak S (2002). New record of an exotic bivalve from the southeastern coast of Turkey: *Scapharca inflata* (Reeve, 1844). *La Conchiglia* 34: 56–60.
- Çeviker D, Albayrak S (2006). Three alien molluscs from Iskenderun Bay (SE Turkey). *Aquat Invas* 1: 76–79.
- Çınar ME, Bilecenoglu M, Öztürk B, Can A (2006). New records of alien species on the Levantine coast of Turkey. *Aquat Invas* 1: 84–90.
- Çınar ME, Bilecenoglu M, Öztürk B, Katağan T, Yokes MB, Aysel V, Dağlı E, Açıık S, Özcan T, Erdoğan H (2011). An updated review of alien species on the coasts of Turkey. *Mediterranean Marine Science* 12: 257–315.
- Çınar ME, Ergen Z, Öztürk B, Kırkım F (1998). Seasonal analysis of zoobenthos associated with a *Zostera marina* L. bed in Gulbahce Bay (Aegean Sea, Turkey). *Mar Ecol* 19: 147–162.
- Çınar ME, Katağan T, Egemen Ö, Önen M, Öztürk B, Öztürk B, Yılmaz F, Bilecenoglu M, Doğan A, Sezgin M et al. (2012–2015). Benthic Invertebrate Diversity and Community Structures in Marmara Sea and the Straits. The Scientific and Technical Research Council of Turkey (TÜBİTAK ÇAYDAG) 111Y268.
- Çınar ME, Katagan T, Öztürk B, Dağlı E, Açıık S, Bitlis B, Bakir B, Dogan A (2012a). Spatio-temporal distributions of zoobenthos in Mersin Bay (Levantine Sea, eastern Mediterranean) and the importance of alien species in benthic communities. *Mar Biol Res* 8: 954–968.
- Çınar ME, Katagan T, Öztürk B, Bakir K, Dağlı E, Açıık S, Dogan A, Bitlis B (2012b). Spatiotemporal distributions of zoobenthos in soft substratum of İzmir (Aegean Sea, eastern Mediterranean), with special emphasis on alien species and ecological quality status. *J Mar Biol Ass UK* 92: 1457–1477.
- CLEMAM. 05.2014. <http://www.somali.asso.fr/clemam/index.clemam.html>.
- Colombo A (1885). Raccoglie Zoologiche Eseguite dal R. Piroscavo Washington Nella Campagna Abissale Talossografica dell'anno 1885. *Riviste Marittima* 18: 22–53 (in Italian).
- Çulha M, Bat L, Türk-Çulha S, Gargacı A (2007). Some mollusk species on the hard-bottom of Sinop Peninsula (Central Black Sea). *Turkish Journal of Aquatic Life* 3–5: 242–257.
- Çulha M, Bat L, Türk-Çulha S, Çelik MY (2010). Benthic mollusk composition of some facies in the upper-infralittoral zone of the southern Black Sea, Turkey. *Turk J Zool* 34: 523–532.
- Degner E (1925). Cephalopoda. Report on the Danish Oceanographical Expeditions 1908-10 to the Mediterranean and Adjacent Seas 2: 1–94.
- Delongueville C, Scaillet R (2007). Les espèces invasives de mollusques en Méditerranée. *Novapex/Societe* 8: 47–70 (in French).
- Demir M (1952). Boğaz ve Adalar Sahillerinin Omurgasız Dip Hayvanları. PhD, Hidrobiyoloji, İstanbul Üniversitesi, Türkiye (in Turkish).

- Demir M (1977). On the presence of *Arca (Scapharca) amygdalum* Philippi, 1847 (Mollusca: Bivalvia) in the harbour of Izmir, Turkey. *Journal of the Faculty of Science, Istanbul University* 42: 197–202.
- Demir M (2003). Shells of Mollusca collected from the seas of Turkey. *Turk J Zool* 27: 101–140.
- Digby B (1949). Cephalopods from local waters at the University of Istanbul. *Nature* 163: 411.
- Doğan A (2005). Türkiye'nin Ege Denizi Kıyılarında Dağılım Gösteren Bivalvia (Mollusca) Türlerinin Biyo-ekolojik Özellikleri. PhD, Ege Üniversitesi, Fen Bilimleri Enstitüsü, Türkiye (in Turkish).
- Doğan A, Çınar ME, Önen M, Ergen Z, Katağan T (2005). Seasonal dynamics of soft bottom zoobenthic communities in polluted and unpolluted areas of Izmir Bay (Aegean Sea). *Senckenbergiana maritima* 35: 133–145.
- Doğan A, Önen M, Öztürk B (2007). Impacts of cage farming on the distribution on the molluscan fauna in the Aegean Sea. *Rapp Comm Int Mer Médit* 38: 464.
- Doğan A, Önen M, Öztürk B, Bitlis B (2008). Distribution to Show of Propeamussidae and Pectinidae (Bivalvia-Mollusca) Species in the Aegean Sea Coasts of Turkish. Türkiye'nin Ege Denizi Kıyılarında Dağılım Gösteren Propeamussidae ve Pectinidae (Bivalvia-Mollusca) Türleri. In: Çevik C, Ergüden D, editors. 2nd National Malacology Congress; 8–10 October 2008; Adana, Turkey, pp. 87–112.
- Doğan A, Önen M, Öztürk B, Bitlis B (2009). Two rare deep-sea bivalve species from the Levantine coast of Turkey: *Bathyarca philippiana* (Nyst, 1848) and *Verticordia granulata* Seguenza G., 1860. *Turk J Zool* 33: 225–230.
- Doğan A, Öztürk B, Bitlis-Bakır B, Önen M (2014). Additions to the knowledge of alien molluscs of the Aegean Sea with two new records: *Crepidula fornicata* (Linnaeus, 1758), *Arcuatula senhousia* (Benson in Cantor, 1842). *Turk J Fish Aquat Sc* 14: (in press)
- Eleftheriou A, Anagnostopoulou-Visilia E, Anastasopoulou E, Ateş SA, Bachari N El I, Cavas L., Cevik C, Çulha M, Cevik F, Delos AL et al. (2011). New Mediterranean Biodiversity Records (December 2011). *Medit Mar Sci* 12: 491–508.
- Engl W (1992). Die Lesseps'schen Einwanderer. *C Conch Inform* 24: 8 (in German).
- Engl W (1995). Specie prevalentemente lessepsiane attestate lungo le coste Turche. *Boll Malacologico* 31: 43–50 (in German).
- Engl W, Çeviker D (1999). New migrant species from southeast Turkey *Psammotreta praerupta* (Salisbury, 1934) and *Antigona lamellaris* Schumacher, 1817. *La Conchiglia* 31: 17–20.
- Enzenross L, Enzenross R (1987). Studie über das Vorkommen von Mollusca und Crustacea an der türkischen Küste (Mittelmeerküste und Ägäis). *Meeresbiologie Zoologi, Ravensburg, Unveröffentlichtes Manuskript* 1–17 (in German).
- Enzenross L, Enzenross R, Niederhöfer HJ (1990). Wissenschaftlich interessante Funde aus der Sammlung Enzenross (Marine Invertebraten). *Jahreshefte der Gesellschaften fure Naturkunde in Wuerttemberg*. *Jahreshefte der Gesellschaften fure Naturkunde in Wuerttemberg* 145: 283–294 (in German).
- Ergen Z, Çınar ME (1994). Qualitative and Quantitative Investigations on the *Cystoseira* Facies of the Aegean Sea. XII. National Biology Congress; 6–8 July 1994; Edirne, Turkey, p. 138–149.
- Ergen Z, Kocataş A, Katağan T, Çınar ME (1994). The benthic fauna of Gencelli Bay (Aliğa İzmir). 1st National Congress on Ecology and Environment. 5–7 October 1993; *Journal of the Faculty of Science, Ege University, Series B*, pp. 1047–1059.
- Erol-Özfuçucu G, Katağan T, Egemen Ö (2003). Possible Environmental Results of Improving Aquaculture in İkiz Adalar and Salih Island. TC. Tarım ve Köyşleri Bakanlığı Tarımsal Araştırmalar Genel Müdürlüğü, Tagem/Haysüd/2001/09/02/06. Bodrum Su Ürünleri Araştırma Enstitüsü, Publication number: 10, pp 53.
- Falakalı-Mutaf B, Akşit D, Gökoğlu M (2007). Some marine gastropods first recorded from Antalya Bay, Turkey (the Mediterranean Sea). *Mar Bio Rec* 1: 1–7.
- Falchi S (1974). Molluschi di provenienza Indopacifica lungo le coste Turche. *Conchiglie* 10: 89–90 (in Italian).
- Fischer-Piette E (1960). *Rapana bezoar* I. sur la cote Turquie de la mer Noire. *Hydrobiologi, Serie B5* 1–2: 51 (in French).
- Forbes E (1844). Report on the Mollusca and Radiata of the Aegean Sea, and on their distribution, considered as bearing on Geology. Report of the Thirteenth Meeting of the British Association for the Advancement of Science Held at Cork in August 1843. London. pp. 130–193.
- Forskål P (1775). Descriptiones animalium avium, amphibiorum, piscium, insectorum, vermium; quae in itinere orientali observavit Petrus Forskal. Post mortem auctoris edidit Carsten Niebuhr Adjuncta est materia medica Kahirina atque tabula maris rubri geographica. Copenhagen, 164 p (in Latin).
- Geldiay R, Kocataş A (1972). İzmir Körfezinin Benthosu Üzerine Preliminer Bir Araştırma. Ege Üniversitesi Fen Fakültesi Monografiler Serisi 12: 1–34 (in Turkish).
- Geldiay R, Uysal H (1971). A study on the species of Mytilidae living in the Gulf of Izmir and vicinity. Scientific reports of the Faculty of Science, Ege University 113: 3–17.
- Geldiay R, Uysal H (1972). A study on the Population Dynamic and Ecological Aspects of *Donacilla (Donacilla) cornea* (Poli) ve *Donax trunculus* L. living on the Aegean Sea coast of Turkey. Scientific reports of the Faculty of Science, Ege University 135: 1–18.
- Gianuzzi-Savelli R, Pusateri F, Palmeri A, Ebreo C (1999). Atlas of the Mediterranean Seashells (Caenogastropoda part 2: Ptenoglossa). Edizioni Evolver, Rome, 3: 127.
- Giunchi L, Micali P, Tisselli M (2001). Report of two new Lessepsian immigrants from Turkey. *La Conchiglia* 33: 47–48.
- Gökoğlu M, Özgür E (2008). First report of *Chromodoris annulata* Eliot, 1904 (Mollusca, Opisthobranchia, Chromodorididae) on the Levantine coast of Turkey, Eastern Mediterranean. *Aquat Invas* 3: 435–437.

- Gönlügür-Demirci G (2005). Mollusca fauna of Sinop Peninsula (Middle Black Sea). *Science and Eng J of Firat Univ* 17: 565–572.
- Gönlügür-Demirci G, Katakın T (2004). Qualitative and quantitative investigations on *Ulva rigida* facies from the upper infralittoral zone along Sinop coast, Middle Black Sea. *International Workshop on the Black Sea Benthos*; 18–23 April 2004; İstanbul-Turkey, pp. 1–10.
- Gözcelioğlu B (2011). *Denizlerimizimizin Sakinleri*. 1st ed. Ankara, Turkey: Gökçe Ofset Basım Yayın, p. 471 (in Turkish).
- Gruvel A (1931). *Les états de Syrie. Richesses marines et fluviales. Exploitation actuelle. Avec nir, par A. Gruvel. Société d'Éditions Géographiques, Maritimes et Coloniales, Paris*, p. 453 (in French).
- Houart R (2000). New species of Muricidae (Gastropoda) from the northeastern Atlantic and the Mediterranean Sea. *Zoosystema* 22: 459–469.
- Houart R (2001). A Review of the Recent Mediterranean and Northeastern Atlantic Species of Muricidae. Rome, Italy: Evolver.
- Houart R (2008). Rehabilitation of *Ergalatax martensi* (Schepman, 1892) (Gastropoda: Muricidae), senior synonym of *Ergalatax obscura* Houart, 1996, and description of *Ergalatax junionae*, new name for *Morula martensi* Dall, 1923. *The Nautilus* 122: 99–106.
- Jakubova I (1935). K rajonirovanju Chernovo morja na osnove sostava faunij bentosa i evo razpredelenija u beregov Chernovo morja. *DAH SSSR* 1: 4 (in Russian).
- Jakubova I (1948). Osobenosti biologii pribosforskovogo uchastka Chernovo Morja. *Trudi Sevastopolskoj Stantsii*, 6: 274–285 (in Russian).
- Jereb P, Battaglia P, Bello G, Cannas R, Duysak Ö, Garibaldi F, Hoving HJT, Lefkaditou E, Lipinski MR, Maiorano P et al. (2012). The genus *Octopoteuthis* and the Mediterranean Sea: a look into the deep. *Cephalopod International Advisory Council Symposium*; 27 October–02 November 2012; Brazil.
- Kaas P, van Belle RA (1987). *Monograph of Living Chitons (Mollusca: Polyplacophora). Suborder Ischnochitonina: Ischnochitonidae: Chaetopleurinae & Ischnochitoninae (pars). Addition to vols 1 & 2, Backhuys Leiden, New York Köln Kobenhavn* 3: 1–302.
- Kabasakal H, Demircan B, Kabasakal O (2011). A photographic survey of opisthobranch gastropods (Mollusca: Opisthobranchia) from the northeastern Marmaric littoral. *Conchylia* 41: 56–65.
- Kabasakal H, Kabasakal E (2002). A new record for the mollusca fauna of the seas of Turkey: Oil-vessel Triton, *Ranella olearum* (Linnaeus, 1758), (Gastropoda: Ranellidae). *C Conch Inform* 33: 17–19.
- Kabasakal H, Karhan SÜ, Kalkan E (2006). First record of *Aperiovula adriatica* (G.B. Sowerby, I, 1828) (Gastropoda, Caenogastropoda, Ovulidae) in the Sea of Marmara, Turkey. *Basteria* 70: 19–21.
- Kabasakal H, Karhan Ü, Kabasakal E, Buzzurro G (2006). First record of *Diodora demartiniorum* (Buzzurro & Russo, 2004) (Archaeogastropoda: Fissurellidae) in the seas of Turkey. *Triton* 13: 31–34.
- Kaneva-Abadjieva V (1959). La faune des mollusques de la région du Bosphore. *Compte rendus de l'Académie bulgare des Sciences* 12: 439–442 (in French).
- Karhan SÜ, Yokeş MB (2009). Additional records of the alien gastropod, *Ergalatax junionae* Houart, 2008 (Gastropoda: Muricidae) from the Eastern Mediterranean. *Medit Mar Sci* 10: 137–142.
- Karhan SÜ, Yokes MB, Kalkan E (2007). First record of *Aeolidiella alderi* (Cocks, 1852) (Nudibranchia, Aeolidiidae) from Turkey. *Triton* 15: 11–13.
- Katakın T, Benli HA (1990). New Cephalopod (Mollusca) species for the Turkish seas. *Doğa - Tr J of Zoology* 14: 156–161.
- Katagan T, Kocatas A (1990). Note préliminaire sur les Cephalopodes des eaux Turques. *Rapp Comm int Mer Médit* 32: 242 (in French).
- Katagan T, Salman A, Benli, HA (1992). Nouvelles observations sur *Ommastrephes bartrami* (Le Sueur, 1821) (Cephalopoda: Ommastrephidae) Dans le bassin Méditerranée orientale. *Rapp Comm Int Mer Médit* 33: 298 (in French).
- Katagan T, Salman A, Benli HA (1993). The Cephalopod fauna of the Sea of Marmara. *Israel J Zool* 39: 255–261.
- Kinzelbach A (1985). Lesseps'sche Wanderung: neue Stationen von Muscheln (Bivalvia: Anisomyaria). *Arch Moll* 115: 273–278 (in German).
- Kiseleva MI (1961). Qualitative and quantitative distribution of the benthos in the part of the Aegean sea close to the Dardanelles. *Trudy sevast Biol Sta* 14: 135–146.
- Kiseleva MI (1969). Vodoobmen cherez Bosfor i evo vlianie na gidrologiu i biologiu Chernovo morja. *Naukova Dumka, Kiev* pp. 280 (in Russian).
- Kocataş A (1978). İzmir Körfezi Kayalık Sahillerinin Bentik Formları Üzerinde Kalitatif ve Kantitatif Araştırmalar. *Ege Üniversitesi Fen Fakültesi Monografiler* 12: 1–93 (in Turkish).
- Koçak C, Katakın T (2005). A comparative study of the impacts of three fish farms on the macrofauna in Izmir Bay (Aegean Sea, Turkey). *E.U. Journal of Fisheries Aquatic Sciences*. 22: 287–296.
- Koutsoubas D, Koukouras A, Voultsiadou-Koukoura E (1997). Prosobranch mollusc fauna of the Aegean Sea: new information, checklist, distribution. *Israel J Zool* 43: 19–54.
- Kowalevsky A (1901). Sur le genre *Chaetoderma*. *Archives de Zoologie expérimentale et générale, séries* 3: 261–284 (in French).
- Linden J van der, Eikenboom JCA (1992). On the taxonomy of the recent species of the genus *Chrysallida* Carpenter from Europe, the Canary Island and the Azores (Gastropoda, Pyramidellidae). *Basteria* 56: 3–63.



- Lindner G von (1987). Interessante Schneckenfunde an der südtürkischen Mittelmeerküste (Reisemitbringsel der Familie Schmidt, Feldkirchen). *C Conch Inform* 19: 32–43 (in German).
- Lindner G von (1988). *Laevicardium (Fulvia) papyraceum* (Brugiere, 1789) von der sudturkischen Mittelmeerküste (leg, Familie Schmidt, Feldkirchen). *C Conch Inform* 20: 35–37 (in German).
- Marion AF (1898). Notes sur la faune des Dardanelles et du Bosphore. *Annual Museum History Natural Marseille* (ser: 2) *Bull Notes zool géol Paléontol* 1: 163–182 (in French).
- Mavili S (2004). A contribution to the Molluscan fauna of Turkey: Occurrence of *Cymbulia peronii* Lamarck, 1819 (Gastropoda, Pseudothecosomata) in the coastal waters of the Northern Aegean Sea. In: Öztürk B, Salman A, editors. 1st National Malacology Congress; 1–3 September 2004; Turkish Journal of Aquatic, Istanbul, Turkey p. 24.
- Micali P (1999). Note sulle specie di *Chauvetia* dell'Atlantico nord-orientale. *Boll Malacologico* 34: 53–68 (in Italian).
- Micali P, Nofroni I, Perna E (2012). *Parthenia alesii* n. sp. from Eastern Mediterranean, and notes on *Parthenina dantarti* (Peñas & Rolán in Peñas, Rolán & Ballesteros, 2008) (Gastropoda: Heterobranchia: Pyramidellidae). *Boll Malacologico* 48: 69–72.
- Micali P, Palazzi S (1992). Contributo alla conoscenza dei Pyramidellidae della Turchia, con segnalazione di due nuove immigrazioni dal Mar Rosso. *Boll Malacologico* 28: 83–90 (in Italian).
- Mienis HK (2004). New data concerning the presence of Lessepsian and other Indo-Pacific migrants among the molluscs in the Mediterranean Sea with emphasize on the situation in Israel. In: Öztürk B, Salman A, editors. 1st National Malacology Congress; 1–3 September 2004; Turkish Journal of Aquatic, İstanbul, Turkey pp. 117–131.
- Mifsud C, Ovalis P (2003). A note on new discoveries and the distribution of a few Mollusca from the Eastern Mediterranean. *La Conchiglia* 35: 20–25.
- Mifsud C, Ovalis P (2007). *Chama aspersa* Reeve, 1846 (Bivalvia: Chamidae) another established Lessepsian invader in the Mediterranean Sea. *Novapex/Societe* 8: 27–28.
- Mifsud C, Ovalis P (2012). A Galeommatid bivalve new to the Mediterranean Sea. *Triton* 26: 6–8.
- Mutlu E (1994). Qualitative and quantitative distributions of benthic molluscs along the Turkish Black Sea. *Boll Malacologico* 30: 277–286.
- Mutlu E (1995). Hierarchical classification of macrobenthic molluscs in longshore waters of the Turkish Black Sea. In: Guerra A, Rolan E, Rocha F, editors. Twelfth International Malacological Congress; 3–8 September 1995; Vigo, Spain. in Abstracts, pp. 221.
- Mutlu E, Ergev MT (2012). Distribution of soft-bottom mollusks (Mollusca) in Mersin Bay (eastern Mediterranean Sea). *Turk J Zool* 36: 430–446.
- Mutlu E, Unsal M, Bingel F (1993). Faunal community of soft-bottom mollusc of the Turkish Black Sea. *Doğa – Tr J of Zoology* 17: 189–206.
- Müller GJ (1985). The pre-coraligen community in the Marmara Sea. *Rapp Comm Int Mer Medit* 29: 327–328.
- Müller GJ (2011). Holzarten im historischen Schiffbau und ihre Gefährdung durch Terediniden. *Skyllis* 10: 90–94 (in German).
- Nicolay K, Romagna-Manoja E (1983). *Strombus (Conomurex) decorus raybaudii* n. ssp. *La Conchiglia* 176–177: 17–18.
- Niederhöfer HJ, Enzenross L, Enzenross R (1991). Neue Erkenntnisse über die Ausbreitung von “Lesseps’schen Einwanderern” (Mollusca) an der türkischen Mittelmeerküste. *C Conch Inform* 23: 94–108 (in German).
- Oberling JJ (1960–1962). Une collection de microgastéropodes marins d’Attique. *De L’annuaire du musée d’histoire naturelle de la ville de Berne* 207–221 (in French).
- Oberling JJ (1969–1971). On the littoral Mollusca of the Sea of Marmara. *Separatdruck Aus Dem Jahrbuch Des Naturhistorischen Museums Des Stadt* 4: 183–218.
- Okuş E, Sur Hİ, Yüksek A, Yılmaz İN, Aslan-Yılmaz A, Karhan SÜ, Öz Mİ, Demirel N, Taş S, Altıok A et al. (2004). *Datça-Bozburun Özel Çevre Koruma Bölgesinin Denizsel ve Kıyısız Alanlarının Biyolojik Çeşitliliğinin Tespiti Projesi*. Final Raporu, (Sunulan Kuruluş, T.C. Çevre ve Orman Bakanlığı Özel Çevre Koruma Kurumu Başkanlığı) (in Turkish).
- Okuş E, Yüksek A, Yokeş MB, Yılmaz İN, Aslan-Yılmaz A, Karhan SÜ, Demirel N, Demir V, Zeki S, Taş S et al. (2006). Coastal and Marine Biodiversity Assessment of Gökova Specially Protected Area Final Report. Environmental Protection Agency for Special Areas, Ministry of Environment and Forestry of Turkey.
- Oliverio M (1983). Ancora su *Tharsiella depressa* (Granata, 1877). *Notiz CISMA* 1: 6–8 (in Italian).
- Oliverio M (1986). *Alvania amatii* n. sp. (Gastropoda: Prosobranchia). *Notiz CISMA* 7: 29–34.
- Oliverio M (1993). On the record of a living lessepsian Pyramidellid from Turkey (Heterobranchia, heterostropha). *Notiz CISMA* 15: 79–82.
- Oliverio M, Buzzurro G, Villa R (1994). A new eulimid gastropod from the eastern Mediterranean Sea (Caenogastropoda, Ptenoglossa). *Boll Malacologico* 30: 211–215.
- Önen M (1983). The qualitative and quantitative investigation of the macrobenthic fauna found in the soft substratum of the Urla harbour. *EU Faculty of Sci Journ Series B* 6: 29–39.
- Önen M, Doğan A, Öztürk B (2004). *Dacrydium hyalinum* (Monterosato, 1875) and *Musculus discors* (Linnaeus, 1767): Two New Mytilidae (Bivalvia) Species for the Turkish Mollusca Fauna of Turkey. In: Öztürk B, Salman A, editor. 1st National Malacology Congress; 1–3 September 2004; Turkish Journal of Aquatic, İstanbul, Turkey, p 161.
- Onmuş OA (2002). The distribution of *Crecies acicula* (Mollusca, Pteropoda) in the İzmir Bay zooplankton. *Institute of Science, Ege Univ* 1–36.

- Ostroumoff A (1894). K Estestvennoi istorii Bosfora. Prilojenie k LXXIV-my Tomu Zapisok Imper. Akademii Nauk p. 5 (in Russian).
- Ostroumoff A (1896). Otchet o dragirovках i planktonniyh ulovaht ekspeditsia "Selyanika". Bulletin de l'Academie Imperiale des Sciences de St. Petersburg 5: 33–92 (in Russian).
- Ovalis P, Mifsud C (2013). Another alien lessepsian bivalve in the eastern Mediterranean. Triton 27: 9.
- Ovalis P, Mifsud C (2014). On the presence of *Caecum sepimentum* de Folin, 1868 (Gastropoda: Caecidae) in the Mediterranean Sea. Triton 29: 3–4.
- Öztürk B (2001). Turridae Swainson, 1840 Species (Gastropoda-Mollusca) of İzmir Bay (Aegean Sea). Turk J Zool 25: 53–56.
- Öztürk B (2011). Scaphopod species (Mollusca) of the Turkish Levantine and Aegean seas. Turk J Zool 35: 199–211.
- Öztürk B (2012). A new alien gastropod *Pseudorhaphitoma iodolabiata* (Hornung & Mermod, 1928) (Mangeliidae, Mollusca) in the Mediterranean Sea. Medit Mar Sci 13: 30–32.
- Öztürk B (2013). *Odetta zekiargeni* a new species of Pyramidellidae (Mollusca: Gastropoda) from the eastern Mediterranean Sea. Zootaxa 3691: 295–298.
- Öztürk B (2014). Shelled Molluscs of the Turkish coasts: informal group «Lower Heterobranchia». Ege University Press Publication of the Faculty of Fisheries No: 81.
- Öztürk B, Aartsen JJ van (2006). Indo-Pacific species in the Mediterranean. 5. *Chrysallida micronana* nom. nov. for *Chrysallida nana* (Hornung and Mermod, 1924) (Gastropoda, Pyramidellidae). Aquat Invas 1: 241–244.
- Öztürk B, Bitlis-Bakır B (2013a). Heterostropha species of the Turkish coasts: *Anisocycla*, *Eulimella*, *Puposyrnola*, *Syrnola*, and *Turbonilla* (Gastropoda, Heterobranchia). Turk J Fish Aquat Sc 13: 423–440.
- Öztürk B, Bitlis-Bakır B (2013b). An additional note on the presence of *P. iodolabiata* (Mollusca: Gastropoda: Mangeliidae) in the Mediterranean Sea. Triton 28: 6–7.
- Öztürk B, Bitlis-Bakır B (2013c). *Eunaticina papilla* (Gmelin, 1791) (Naticidae, Gastropoda): A new alien mollusc in the eastern Mediterranean. Triton 28: 7–8.
- Öztürk B, Bitlis-Bakır B, Er-Filiz M (2011). The genus *Chrysallida* Carpenter, 1856 on the Turkish coasts. Zool Middle East 54: 53–78.
- Öztürk B, Bitlis-Bakır B, Micali P (2013). Heterostropha species of the Turkish coasts: *Odostomiinae* Pelseneer, 1928 (Gastropoda, Heterobranchia, Pyramidellidae). Turk J Fish Aquat Sc 13: 139–157.
- Öztürk B, Can A (2006). Indo-Pacific gastropod species in the Levantine and Aegean Seas. Aquat Invas 1: 124–129.
- Öztürk B, Çevik C (2000). Mollusc fauna of Turkish seas. C Conch Inform 32: 27–53.
- Öztürk B, Çevik C (2001). The presence of *Chauvetia turritellata* (Deshayes, 1835) in İzmir Bay (Aegean Sea). Boll Malacologico 37: 7–8.
- Öztürk B, Çulha M, Ürkmez D (2004). Bivalvia fauna of the Sinop Peninsula and its vicinity. In: Öztürk B, Salman A, editors. 1st National Malacology Congress; 1–3 September 2004; Turkish Journal of Aquatic, İstanbul, Turkey, pp. 71–78.
- Öztürk B, Doğan A, Önen M, Çevik C (2007). *Lepidopleurus cimicoides* (Monterosato, 1879) and *Lepidochitona furtiva* (Monterosato, 1879): two new reports for the Polyplacophora (Mollusca) fauna of the Aegean Sea. Boll Malacologico 43: 33–38.
- Öztürk B, Doğan A, Bitlis B, Önen M (2008). Ptenoglossa species (Mollusca: Gasropoda) distributed along the Turkish coast of the Aegean Sea. Turk J Zool 32: 201–211.
- Öztürk B, Ergen Z (1999). Caecidae (Gastropoda-Mollusca) species of the Aegean coasts of Turkey. E U J Fish Aquat Sc 16: 149–157.
- Öztürk B, Ergen Z (2000). Les Arcaeogastéropodes (Mollusca\_Gastropoda) du littoral Turc de la Mer Egée. Acta Adriat 41: 59–70 (in French).
- Öztürk B, Ergen Z, Önen M (2000). Polyplacophora (Mollusca) from the Aegean coast of Turkey. Zool Middle East 20: 69–76.
- Öztürk B, Ergen Z, Önen M (2001). Muricidae (Neogastropoda) fauna of İzmir Bay (Aegean Sea). Triton 3: 1–4.
- Öztürk B, Önen M, Doğan A (2007). Addition to the knowledge of Turkish mollusc fauna. Rapp Comm Int Mer Medit 38: 566.
- Öztürk B, Önen M, Doğan A (2008). Türkiye Denizel Mollusca Türleri Tayin Atlası, Ankara. The Scientific and Technical Research Council of Turkey (TÜBİTAK) 103T154 p. 468 (in Turkish).
- Öztürk B, Özgür E, Ürün A (2005). Ölüdeniz Lagünü Denizel Biyoçeşitliliği Üzerine Bir Ön Çalışma. Ölüdeniz Lagünü Sürdürülebilir Yönetim Sempozyumu; 27–28 Ekim 2005; Ölüdeniz, Antalya, Turkey pp. 64–83 (in Turkish).
- Öztürk B, Poutiers JM (2005). *Fulvia fragilis* (Bivalvia: Cardiidae): a lessepsian mollusc species from İzmir Bay (Aegean Sea). J Mar Biol Ass UK 85: 351–356.
- Öztürk B, Poutiers JM, Önen M, Doğan A (2006). On the occurrence of *Rhomboidella prideaux* (Leach, 1815) (Mollusca: Bivalvia: Mytilidae) in the Eastern Mediterranean. The Veliger 48: 215–219.
- Öztürk B, Poutiers JM, Sarı HM, Özbek M (2002). On the occurrence of *Mytilaster marioni* (Locard, 1889) (Mollusca; Bivalvia; Mytilidae) in Bafa Lake (Turkey), with a redescription of the species. Hydrobiologia 485: 121–131.
- Öztürk B, Topaloğlu B, Tarkan AN (1998). Bodrum-Karaada'nın Denizel Biyolojik Çeşitlilik Açısından İncelenmesi. Bodrum Yarımadası Çevre Sorunları Sempozyumu: 15–19 Şubat 1998; Bodrum, Türkiye. p. 437–447 (in Turkish).
- Öztürk B, Topçu E, Topaloğlu B (2012). The submarine canyons of the Rhodes basin and the Mediterranean coast of Turkey. In Würtz M, editor. Mediterranean Submarine Canyons: Ecology and Governance, Gland, Switzerland and Malaga, Spain: IUCN, pp. 65–71.

- Palaz M, Berber S (2005). The bivalve species of the Dardanelles. *J Mar Biol Ass UK* 85: 357–358.
- Palazzi S (1993). Ci sono due *Zafra* in mediterraneo, ma come si chiamano? *Notiz CISM* 14: 13–18 (in Italian).
- Pallary P (1917). Mollusques marins des Dardanelles colligés par M. Claude Bravard. *J Conch* 63: 142–147 (in French).
- Parenzan P (1977). Random thoughts on *Tricolia* species from the Mediterranean. *La Conchiglia* 99–100: 10–13.
- Peñas A, Rolán E (2013). Revision of the genera *Murchisonella* and *Pseudoacilisina* (Gastropoda, Heterobranchia, Murchisonellidae). *Vita Malacologica* 11: 15–64.
- Pinar E (1973). Fouling and boring organisms in some Turkish harbours and the effectivity of antifouling and antiboring paints against these organisms. *Scientific reports of the Faculty of Science, Ege University* 170: 1–67.
- Ponder WF, Lindberg DR (2008). *Phylogeny and Evolution of the Mollusca*. London: University of California Press, p. 469.
- Pusateri F, Giannuzzi-Savelli R, Oliverio M (2013). A revision of the Mediterranean Raphitomidae 2: On the sibling species *Raphitoma lineolata* (B. D. D., 1883) and *Raphitoma smriglioi* n. sp. *Iberus* 31: 11–20.
- Ritt B, Jozée S, Caprais JC, Noël P, Gauthier O, Pierre C, Henry H, Desbruyères D (2010). First insights into the structure and environmental setting of cold-seep communities in the Marmara Sea. *Deep-Sea Res I*, 57: 1120–1136
- Salman A (2002). New report of the loliginid squid *Septoteuthis lessoniana* Lesson, 1830 in the Mediterranean. *Israel J Zool* 48: 249–250.
- Salman A, Katağan T (2004). Fisheries yield of Cephalopods at Turkish Seas. In: Öztürk B, Salman A, editors. 1st National Malacology Congress; 1–3 September 2004; Turkish Journal of Aquatic Life, İstanbul, Turkey, pp. 25–32.
- Salman A, Katagan T, Benli HA (1997). Bottom trawl teuthofauna of the Aegean Sea. *Arch Fish Mar Res* 45: 183–196.
- Salman A, Katağan T, Benli HA (2002). Cephalopod fauna of the Eastern Mediterranean. *Turk J Zool* 26: 47–52.
- Salman A, Katagan T, Benli HA (2003). Vertical distribution and abundance of juvenile cephalopods in the Aegean Sea. *Sci Mar* 67: 167–176.
- Salman A, Katagan T, Boletzky SV (1999). New Cephalopod molluscs in the Eastern Mediterranean: previously unnoted species or Lessepsian migrants? *Vie et Milieu* 49: 11–17.
- Salvini-Plawen L von, Öztürk B (2006). New records of Caudofoveata (*Falcidens guttuosus*, *Prochaetoderma raduliferum*) and of Solenogastres (*Eleutheromenia carinata*, spec. nov.) from the eastern Mediterranean Sea. *Spixiana* 29: 217–224.
- Schniebs K (2000). Erster Nachweis einer Stomatelliden-Art im Mittelmeer (Gastropoda: Prosobranchia). *Malakologische Abhandlungen* 20: 99–100 (in German).
- Schirò G (1980). The Ringiculidae living in the Mediterranean. *La Conchiglia* 12 (138–139): 10–11.
- Şen S, Sivrikaya H, Yalcin M (2009). Natural durability of heartwoods from European and tropical Africa trees exposed to marine conditions. *Afr J Biotechnol* 8: 4425–4432.
- Şen S, Sivrikaya S, Yalçın M, Bakır AK, Öztürk B (2010). Fouling and boring organisms that deteriorate various European and tropical woods at Turkish seas. *Afr J Biotechnol* 9: 2566–2573.
- Smriglio C, Mariottini P, Buzzurro G (1998). The *Trivia spongicola* complex, with the description of a new species (Caenogastropoda; Triviidae). *Boll Malacologico* 33: 161–168.
- Sturany R (1895). Bestimmungsliste der von Herrn Dr Konrad Natterer auf S.M.Schiff “Taurus” im Marmara-Meere Gedredschten mollusken. *Denkschriften der mathem-naturw CI* 62: 119–121 (in German).
- Swennen C (1961). On a collection of Opisthobranchia from Turkey. *Zoologische Mededelingen* 38: 42–74.
- Tisselli M, Giunchi L (2013). Due nuove specie di *Alvania* (Gastropoda: Rissoidae) dal nord-ovest della Turchia. *Quaderno Studi nat. Romagna* 37: 163–174 (in Italian).
- Topaloglu B, Kihara K (1993). Community of Mediterranean mussel *Mytilus galloprovincialis* Lamarck, 1819 in the Bosphorus strait. *Journal of Tokyo University of Fisheries* 80: 113–120.
- Tortonese E (1959). Osservazioni sul Bentos del mar di Marmara e del Bosforo. *Rivista di Scienze Naturali* 50: 18–26 (in Italian).
- Tringali LP, Villa R (1990). Rinvenimenti malacologici dalle coste Turche (Gastropoda, Polyplacophora, Bivalvia). *Notiz CISM* 12: 33–41 (in Italian).
- Tringali LP (1994). A new lessepsian host of the genus *Sticteulima* Laseron, F. C., 1955. *La Conchiglia* 57–58.
- Tringali LP (1995). Known range of *Pyrrunculus hoernesii* (Weinkauff, 1866) extended (Gastropoda: Opisthobranchia: Cephalaspidea). *Notiz CISM* 17: 3–4.
- Tümtürk I (1989). *Chlamys pesfelis* from the Aegean Sea. *La Conchiglia* 242–245: 165.
- Tuncer S, Önal U, İşmen P (2004). A new record of Manila clam in the Sea of Marmara (*Ruditapes philippinarum*, Adams & Reeve). In: Öztürk B, Salman A, editors. 1st National Malacology Congress; 1–3 September 2004; Turkish Journal of Aquatic, İstanbul, Turkey pp. 211–215.
- Tural U, Yokes MB (2012). Opisthobranch species from the Gökova specially protected area (SW Turkey): four new records for the Turkish Malacofauna. *Triton* 25: 8–10.
- Turk T, Furlan B (2011). New records of Indo-Pacific and Atlantic molluscs species (Opisthobranchia) in the eastern Mediterranean and Adriatic Sea. *Annales, Ser hist nat* 21: 5–10.
- Türkmen A (2004). *Janolus cristatus* from Fethiye Bay, Turkey. *Sea Slug Forum*. Australian Museum, Sydney. Available from <http://www.seaslugforum.net/find.cfm?id=12598>
- Türkmen A, Demirsoy A (2009). Contribution to the Eastern Mediterranean Opisthobranchia (Mollusca: Gastropoda) fauna of Turkey. *Turk J Zool* 33: 57–68.
- Uysal H (1967). A study on two Solen species *Solen vagina* L. and *Pharus legumen* L. living in the gulf of İzmir. *Scientific reports of the Faculty of Science, Ege University* 41: 1–17.

- Uysal H (1970). Biological and ecological investigations on the mussels (*Mytilus galloprovincialis* Lamarck) living in the coast line of Turkey. Scientific reports of the Faculty of Science, Ege University 79: 1–79.
- Uysal Z, Latif MA, Özsoy E, Tuğrul S, Kubilay N, Beşiktepe ŞT, Yemenicioğlu S, Mutlu E, Ediger D, Beşiktepe Ş et al. (2008). Kilikya Baseni ve Kıyısız Ekosisteminde Dolaşım, Taşınım ve Ötrofikasyon Araştırmaları. The Scientific and Technical Research Council of Turkey (TÜBİTAK) 104Y277 p. 523 (in Turkish).
- Uysal A, Yüksek A, Okuş E (1998). İstanbul Boğazı, Marmara ve Karadeniz girişlerindeki bentik organizmaların tür çeşitliliği ve dağılımları. Büyükşehirde Atıksız Yönetimi ve Deniz Kirlenmesi Kontrolü Sempozyumu; 18–20 Kasım 1998; İstanbul 139–155 (in Turkish).
- Uysal A, Yüksek A, Okuş E, Yılmaz N (2002). Benthic community structure of the Bosphorus and surrounding area. Water Science and Technology, 46: 37–44.
- Verduin A (1984). On the taxonomy of some recent European marine species of the genus *Cingula* s. L. (Gastropoda: Prosobranchia). Basteria 48: 37–87.
- Vinogradov KO (1962). Chernomorski ekspeditsii 1960-1961 na sejneri "Mikluho-Maklaj" Odeskoj Biologičnij stantsii Institutu gidrobiologii AN URSS-DAH UPSR: 2 (in Russian).
- Wilke T, Aartsen JJ van (1998). The family Pyramidellidae (Heterostropha, Gastropoda) in the Black Sea. Basteria 62: 7–24.
- WoRMS. 05.2014. <http://www.marinespecies.org/>
- Yokeş MB (2009). Addition to the knowledge of Opisthobranchia from Turkey. Triton 20: 5–19.
- Yokeş MB, Rudman WB (2004a). Lessepsian opisthobranchs from southwestern coast of Turkey; five new records for Mediterranean. Rapp Comm Int Mer Médit 37: 557.
- Yokeş MB, Rudman WB (2004b). Türkiye sularında tespit edilen *Aeolidiina* (Opisthobranchia, Gastropoda) türleri; Türkiye için 11 yeni kayıt. 8. Sualtı Bilim ve Teknolojisi Toplantısı; 26–28 Kasım 2004; Sabancı Üniversitesi, İstanbul, pp. 60–69 (in Turkish).
- Yokeş MB, Demir, V (2013) Ayvalık Adaları Tabiat Parkı Denizel Biyolojik Çeşitlilik Çalışması. Teknik rapor Serisi, 20: 104 (in Turkish).
- Yokeş MB, Dalyan C, Karhan SÜ, Demir V, Tural U, Kalkan E (2012). Alien Opisthobranchs from Turkish coasts: first record of *Plocamopherus tilesii* Bergh, 1877 from the Mediterranean. Triton 5: 1–9.
- Yüksek A (1989). The investigations of littoral biota of southern coast of Marmara. Bulletin of Institute of Marine Sciences and Geography, İstanbul University, 6: 203–216.
- Zenetos A, Gofas S, Russo G, Templado J (2003). CIESM Atlas of Exotic Species in the Mediterranean. Vol. 3 Molluscs. Briand F, editor, 376 p, Monaco: CIESM Publishers.
- Zenetos A, Ovalis P, Ceviker D (2010). On some Indo-pacific boring endolithic Bivalvia species introduced into the Mediterranean Sea with their host-spread of *Sphenia rueppelli* A. Adams, 1850. Medit Mar Sci 11: 201–207.
- Zenetos A, Ovalis P (2014). Alien Mollusca in the Levantine Sea - an update. Occurrence of *Ervilia scaliola* Issel, 1869 along the Levantine coast of Turkey. Cah Biol Mar (in press).
- Zernov SA (1913). Kratkij otchet po komandirovke ot zoologičeskovo muzea dlja sobirania koleksii v Chernom More u beregov Turtsii v 1912 g. Ejegodn. Zool Muz AH: 18 (in Russian).