



PHONES

(044) 360-7-130  
(050) 336-0-130  
(063) 788-0-130  
(067) 233-0-130  
(068) 282-0-130

# 130 Internet store of autogoods

COM.UA



ICQ  
294-0-130  
597-0-130

SKYPE  
km-130

CAR RECEIVERS — Receivers • Media receivers and stations • Native receivers • CD/DVD changers • FM-modulators/USB adapters • Flash memory • Facia plates and adapters • Antennas • Accessories | CAR AUDIO — Car audio speakers • Amplifiers • Subwoofers • Processors • Crossovers • Headphones • Accessories | TRIP COMPUTERS — Universal computers • Model computers • Accessories | GPS NAVIGATORS — Portable GPS • Built-in GPS • GPS modules • GPS trackers • Antennas for GPS navigators • Accessories | VIDEO — DVR • TV sets and monitors • Car TV tuners • Cameras • Videomodules • Transcoders • Car TV antennas • Accessories | SECURITY SYSTEMS — Car alarms • Bike alarms • Mechanical blockers • Immobilizers • Sensors • Accessories | OPTIC AND LIGHT — Xenon • Bixenon • Lamps • LED • Stroboscopes • Optic and Headlights • Washers • Light, rain sensors • Accessories | PARKTRONICS AND MIRRORS — Rear parktronic • Front parktronic • Combined parktronic • Rear-view mirrors • Accessories | HEATING AND COOLING — Seat heaters • Mirrors heaters • Screen-wipers heaters • Engine heaters • Auto-refrigerators • Air conditioning units • Accessories | TUNING — Vibro-isolation • Noise-isolation • Tint films • Accessories | ACCESSORIES — Radar-detectors • Handsfree, Bluetooth • Windowlifters • Compressors • Beeps, loudspeakers • Measuring instruments • Cleaners • Carsits • Miscellaneous | MOUNTING — Installation kits • Upholstery • Grilles • Tubes • Cable and wire • Tools • Miscellaneous | POWER — Batteries • Converters • Start-charging equipment • Capacitors • Accessories | MARINE AUDIO AND ELECTRONICS — Marine receivers • Marine audio speakers • Marine subwoofers • Marine amplifiers • Accessories | CAR CARE PRODUCTS — Additives • Washer fluid • Care accessories • Car polish • Flavors • Adhesives and sealants | LIQUID AND OIL — Motor oil • Transmission oil • Brake fluid • Antifreeze • Technical lubricant



In store "130" you can find and buy almost all necessary goods for your auto in Kyiv and other cities, delivery by ground and postal services. Our experienced consultants will provide you with exhaustive information and help you to chose the very particular thing. We are waiting for you at the address

<http://130.com.ua>



# DLS ULTIMATE TWEETERS

UP1i  
Iridium 1i  
Nobelium 1

## Welcome

Thank you for buying a DLS Ultimate tweeter. This manual will show you how to do a correct installation. Please read the entire manual before beginning the installation. Install the speakers yourself if you feel confident with our instructions and if you have the proper tools. The ULTIMATE speakers are our best speaker line but a poor installation job can destroy the final result even from these speakers. So if you feel unsure, turn over the installation job to someone better suited to it.

## Installation

The speakers should be installed high up in the door side or on the dashboard. In competition vehicles they are often installed in the A-pillar which is a very good installation spot to achieve a good sound stage. This kind of mounting requires more job. If you install them in the A-pillar, make sure they are installed in a strong stable baffle, this will improve the sound quality.

UP1C comes with mounting accessories for both recessed and surface mount. Iridium1 and Nobelium 1 are intended for use only in recessed mounting.

## Wiring

Use high quality speaker cables like DLS HQS or similar. Avoid using the factory pre-installed cabling, they will not give the sound reproduction that you should expect from these high class speakers.

Make sure the cables don't get jammed causing a short circuit to ground. This can damage the output circuits of your head unit or amplifier.

Connect the cables with correct polarity to the speakers.

## Break-in period

Allow the speakers to play at normal volume for at least 15-20 hours. After this time the performance is correct.

## Technical Assistance

For technical assistance ask the shop where the product was sold or the distributor in your country.

You can also send an e-mail to [info@dls.se](mailto:info@dls.se)

Information can also be found on our web-site [www.dls.se](http://www.dls.se)

We follow a policy of continuous advancement in development.

For this reason all or part of specifications & designs may be changed without prior notice.

## Warranty service

This speaker is covered by warranty, depending on the conditions in the country where it is sold. If the speaker is returned for service, please include the original dated receipt (or a copy) with the product.

### Technical data UP1i

Art.no	10-25301i
Size	28 mm
Nom. power (RMS)	50 Watts (80 Watts max)
Freq. range	1,5 kHz-20 kHz
Sensitivity	93 dB
Fs	1200 Hz
Overall dimensions	60 mm / 2,36"
Magnet	28 mm / 1,1" neodymium
Mounting depth	18 mm / 0,71"
Mounting hole	48 mm / 1,89"
Cone material	Hand treated fabric

### Technical data Iridium 1i

Art.no	10-25501i
Size	28 mm with chamber
Nom. power (RMS)	50 Watts (80 Watts max)
Freq. range	1 kHz-25 kHz
Sensitivity	93 dB
Fs	900 Hz
Overall dimensions	62 mm / 2,44"
Magnet	28 mm / 1,1" neodymium
Mounting depth	26 mm / 1"
Mounting hole	46 mm / 1,81"
Cone material	Hand treated fabric

### Technical data Nobelium 1

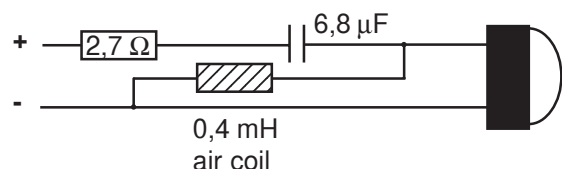
Art.no	10-25601
Size	28 mm with chamber
Nom. power (RMS)	50 Watts (80 Watts max)
Freq. range	1 kHz-25 kHz
Sensitivity	93 dB
Fs	900 Hz
Overall dimensions	62 mm / 2,44"
Magnet	28 mm / 1,1" neodymium
Mounting depth	26 mm / 1"
Mounting hole	46 mm / 1,81"
Cone material	Hand treated fabric

## Crossover

The tweeters must be used with either a passive or an active filter. When the tweeters are a part of a 2- or 3-way speaker system, the filters are included, but if you buy them as separate parts, you must use a separate high pass filter that limits the lower frequency range. If the tweeters are connected without a filter they will be destroyed.

A pair of cable filters are normally delivered with the tweeters, but if you don't have the filters you can build your own filter as in the drawing below.

If the tweeter level is too high you can connect an extra resistor in series with the + wire. Use a resistor 3,3 ohms, 5 Watts.



DLS Svenska AB  
P.O. Box 13029  
SE-40251 Göteborg, Sweden  
Tel: +46 31 840060  
Fax: +46 31 844021  
E-mail: [info@dls.se](mailto:info@dls.se)  
[www.dls.se](http://www.dls.se)



## Installation of Ultimate UP1i tweeter:

### Surface mounting:

For angled surface mount use the angled cup (5):  
The tweeter driver (1) is attached to the cup by fitting the three wings on the angled cup into the tracks of the tweeter driver and then turn it clockwise to lock. When removing the driver from the cup, turn it ccw and lift it up. The cable goes through the hole in the rear side of the cup. Attach to the surface with screws (6) or the round adhesive tape cushions (7). A good place for installation is on the dash board at the A-pillar directed towards a place between the front seats.



### Recessed mounting:

Drill a hole with a diameter of 48 mm / 1,89" in the door side.  
The cup (2) is attached to the door side with the metal wing(3) pressed to the back side of the door. Fasten the metal wing using the two M3 screws (4).  
Put the tweeter driver (1) into the cup with the cable going out through the bottom hole. Then attach the driver into the cup and turn it clockwise to lock in the cup. When removing the driver from the cup, turn it ccw and lift it out.



## Installation of Iridium1i / Nobelium 1 tweeter:

### Recessed mounting 1:

You need a hole with a diameter of 46 mm / 1,88" in the door side, fasten with four screws. A strong baffle will improve the sound.



### Recessed mounting 2:

Sometimes it's necessary to install the tweeter at places where you can't use the round flange. The flange (A) is possible to remove from the tweeter driver (B) by turning it CCW.  
If you prefer to install the tweeter with the flange attached to the tweeter driver, we recommend you to add a string of strong glue on the bottom side, between flange and chamber, to secure it. This gives you the best sound reproduction in this installation.

