

Plate 1

Rzehakinidae, Lituolidae, Trochamminidae, Ataxophragmiidae, Fischerinidae, Miliolidae.

- Figs. 1-6. *Silicosigmoilina groenlandica* (Cushman) 187
1-3: A specimen from zone 3 (24.85 m) of boring no. II, Sandnes. 4-6: Specimen from zone 1 (8.00 m) of boring no. I, Sandnes; both $\times 67$.
- Figs. 7-8. *Ammoscalaria runiana* (Heron-Allen & Earland) 189
7: Side view of a specimen from the Postglacial (spl. no. 29) of boring no. I, Løkken. 8: Edge view of same specimen; $\times 80$.
- Figs. 9-12. *Trochammina inflata* (Montagu) 190
9, 10: Edge and side view of a specimen from the Postglacial (spl. no. 2) of boring no. II, Løkken; $\times 80$. 11, 12: Umbilical and spiral view of a specimen from the Postglacial at Birkelse; $\times 65$.
- Fig. 13. *Eggerella scabra* (Williamson) 192
A specimen from the Postglacial at Birkelse; $\times 90$.
- Fig. 14. *Cyclogyra involvens* (Reuss) 192
A specimen from zone 3 (23.87 m) of boring no. II, Sandnes; $\times 70$.
- Fig. 15. *Quinqueloculina agglutinata* Cushman 193
From Older *Yoldia* Clay (spl. no. 46 A), Hirtshals; $\times 45$.
- Figs. 16-17. *Quinqueloculina lata* Terquem 193
Edge and side view of a specimen from the Postglacial (spl. no. 23) of boring no. I, Løkken; $\times 80$.
- Figs. 18-20. *Quinqueloculina seminulum* (Linné) 194
Specimen from the Postglacial (spl. no. 27) of boring no. I, Løkken; $\times 55$.

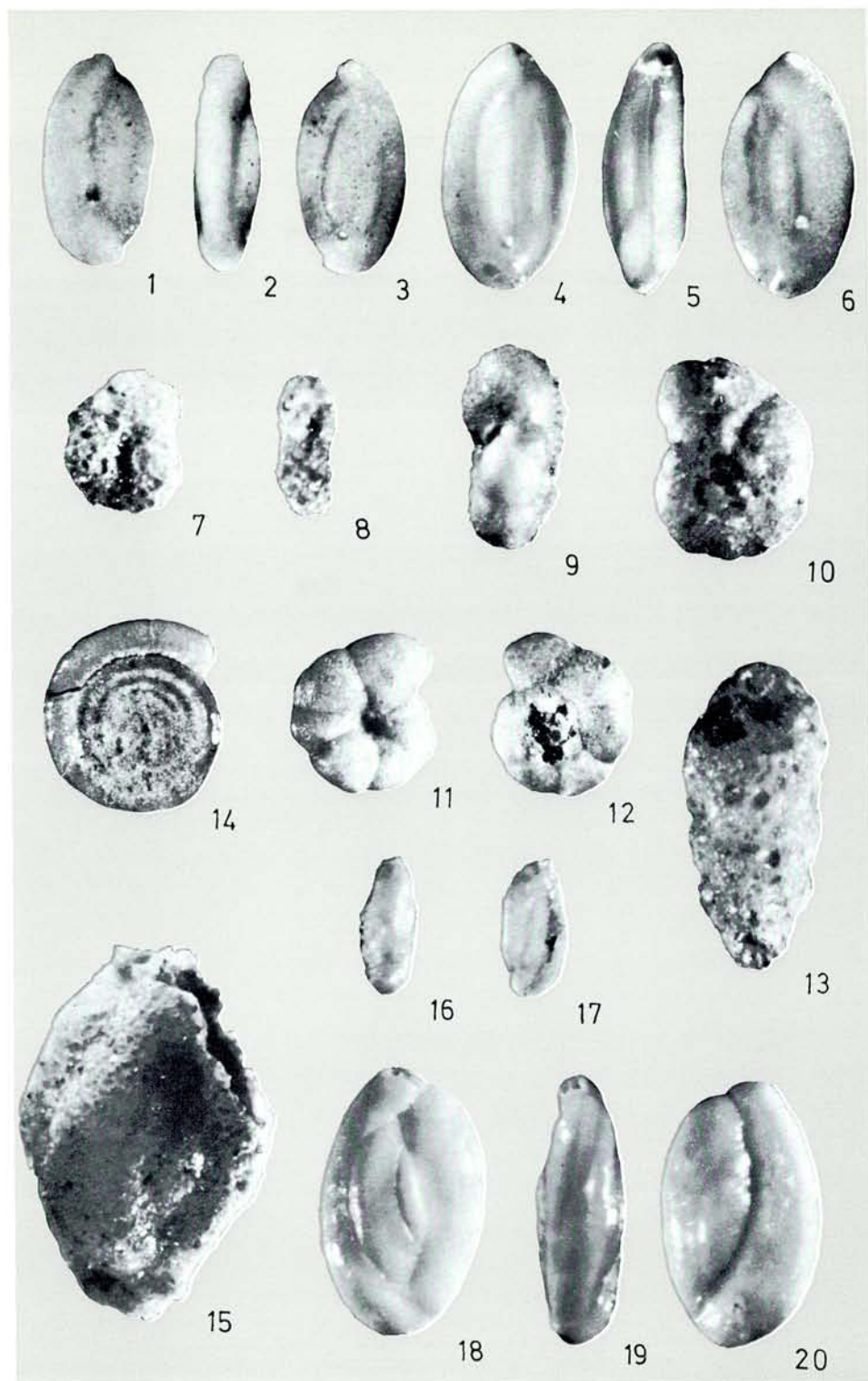


Plate 2

Miliolidae.

- Figs. 1–3. *Quinqueloculina stalker* Loeblich & Tappan 194
A specimen from zone 1 (8.85 m) of boring no. I, Sandnes; × 66.
- Figs. 4–6. *Triloculina trigonula* (Lamarck) 196
A specimen from the Postglacial (spl. no. 21) of boring no. I, Løkken; × 50.
- Fig. 7. *Triloculina trihedra* Loeblich & Tappan 196
A specimen from zone 3 (23.87 m) of boring no. II, Sandnes; × 64.
- Figs. 8–9. *Pyrgo williamsoni* (Silvestri) 196
8: Side view of a specimen from zone 1 (12.40 m) of boring no. II, Sandnes. 9: Front view of a specimen from Older *Yoldia* Clay (spl. no. 33 B), Hirtshals; both × 60.
- Figs. 10–12. *Miliolinella subrotunda* (Montagu) 197
Specimen from the Postglacial (spl. no. 24) of boring no. I, Løkken; × 80.
- Figs. 13–16. *Pateoris hauerinoides* (Rhumbler) 198
13–15: Specimen from the Postglacial (spl. no. 20) of boring no. I, Løkken. 16: Specimen from Older *Yoldia* Clay (spl. no. 33 B), Hirtshals; both × 60.
- Figs. 17–18. *Sigmoilopsis schlumbergeri* (Silvestri) 199
17: Edge view of a specimen from zone 1 (7.33 m) of boring no. II, Sandnes. 18: Side view of the same specimen; × 66.

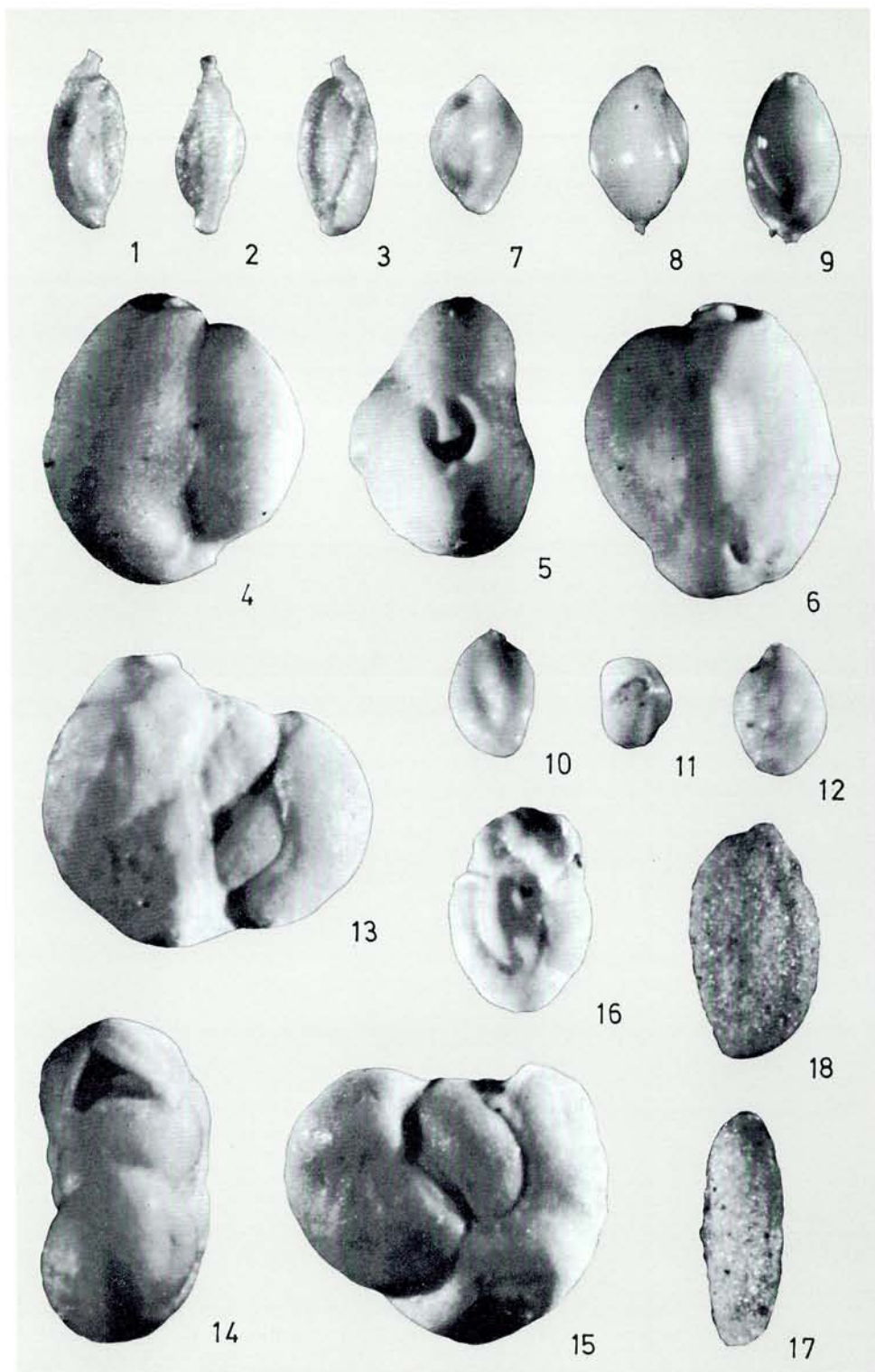


Plate 3

Nodosariidae.

- Fig. 1. *Dentalina baggi* Galloway & Wissler 199
Specimen from Older *Yoldia* Clay (spl. no. 55 A), Hirtshals; × 45.
- Fig. 2. *Dentalina frobisherensis* Loeblich & Tappan 200
Specimen from Older *Yoldia* Clay (spl. no. 34 A), Hirtshals; × 45.
- Figs. 3–4. *Dentalina pauperata* d'Orbigny 201
3: Specimen from Older *Yoldia* Clay (spl. no. 6 B), Hirtshals; × 45. 4: Specimen from boring no. VI (19.40 m), Sandnes; × 66.
- Fig. 5. *Dentalina subsoluta* (Cushman) 201
From Older *Yoldia* Clay (spl. no. 53 D), Hirtshals; × 45.
- Fig. 6. *Lenticulina thalmani* (Hessland) 203
From zone 1 (6.80 m) of boring no. II, Sandnes; × 70.
- Fig. 7. *Marginulina glabra* d'Orbigny 204
Specimen from the Lateglacial (spl. no. 5) of boring no. III, Løkken; × 80.
- Fig. 8. *Amphicoryna scalaris* (Batsch) 204
Specimen from Older *Yoldia* Clay (spl. no. 79 B), Hirtshals; × 80.

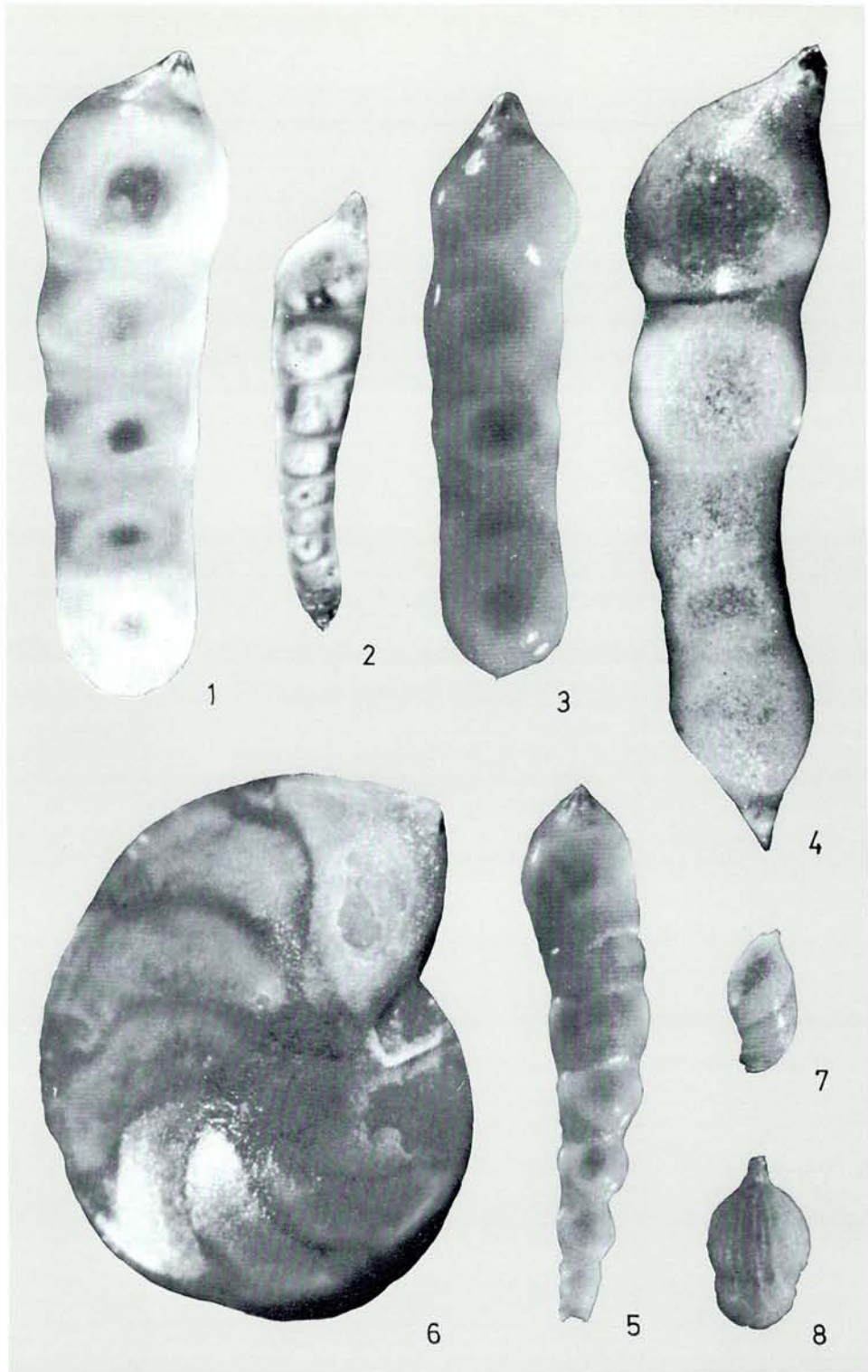


Plate 4

Nodosariidae, Polymorphinidae.

- Fig. 1. *Lagena gracillima* (Seguenza) 206
Specimen from Older *Yoldia* Clay at Stortorn; × 90.
- Fig. 2. *Lagena hirtshalsensis* A. L. Andersen n. sp. 206
Paratype from Older *Yoldia* Clay (spl. no. 40 A), Hirtshals; × 75.
- Fig. 3. *Lagena semilineata* Wright 209
Specimen from Older *Yoldia* Clay (spl. no. 5 A), Hirtshals; × 75.
- Figs. 4–5. *Lagena sulcata laevicostata* Cushman & Gray 210
4: Specimen from the Lateglacial (spl. no. 3) of boring no. III, Løkken; × 80. 5: Specimen from Older *Yoldia* Clay (spl. no. 53 E), Hirtshals; × 75.
- Figs. 6–7. *Lagena trigono-laevigata* Balkwill & Millett 211
A specimen from the Postglacial (spl. no. 19) of boring no. I, Løkken; × 80.
- Figs. 8–9. *Guttulina austriaca* d'Orbigny 211
A specimen from Reve, Jæren; × 68.
- Fig. 10. *Guttulina dawsoni* Cushman & Ozawa 212
Specimen from Older *Yoldia* Clay (spl. no. 13 A), Hirtshals; × 60.
- Figs. 11–13. *Guttulina glacialis* (Cushman & Ozawa) 213
Specimen from the Lateglacial (spl. no. 2) of boring no. III, Løkken; × 80.
- Figs. 14–18. *Guttulina lactea* (Walker & Jacob) 214
14–15: Specimen from Reve, Jæren; × 67. 16–18: Specimen from the Lateglacial (spl. no. 2) of boring no. III, Løkken; × 80.

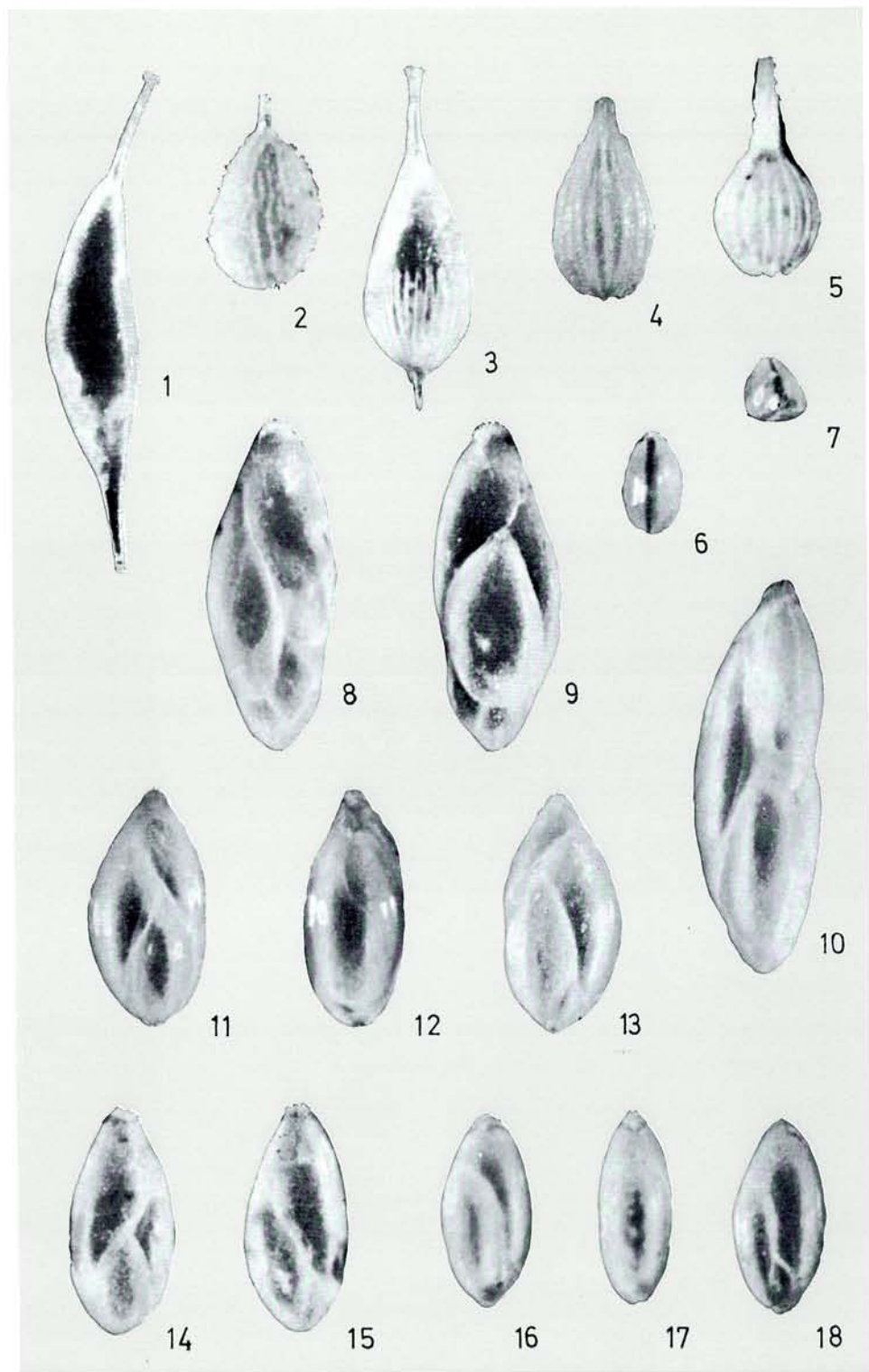


Plate 5

Polymorphinidae, Glandulinidae.

- Figs. 1–2. *Guttulina problema* d'Orbigny 215
Specimen from "Mellemlag", Nygaard brickworks, Karmøy; × 65.
- Fig. 3. *Globulina inaequalis* Reuss 216
A specimen from Older *Yoldia* Clay of Hirtshals (spl. no. 6 C); × 60.
- Fig. 4. *Globulina landesi* (Hanna & Hanna) 217
Specimen from "Mellemlag", Nygaard brickworks, Karmøy; × 64.
- Figs. 5–6. *Pseudopolymorphina novangliae* (Cushman) 217
5: Specimen from zone 3 (13.95 m) of boring no. I, Sandnes; × 67. 6: Specimen from Older *Yoldia* Clay (spl. no. 35 B), Hirtshals; × 60.
- Fig. 7. *Pseudopolymorphina soldanii* (d'Orbigny) 218
From zone 3 (23.87 m) of boring no. II, Sandnes; × 63.
- Fig. 8–9. *Pseudopolymorphina suboblunga* Cushman & Ozawa 218
Side view and edge view of specimen from Reve, Jæren; × 67.
- Figs. 10–11. *Pyrulina cylindroides* (Roemer) 219
Side views of specimen from zone 3 (21.85 m) of boring no. II, Sandnes; × 67.
- Fig. 12. *Glandulina laevigata* d'Orbigny 220
From Older *Yoldia* Clay (spl. no. 55 B), Hirtshals; × 45.
- Figs. 13–15. *Esosyrinx curta* (Cushman & Ozawa) 221
13: Side view of a large specimen from Older *Yoldia* Clay (spl. no. 45 A), Hirtshals; × 60. 14: Side view of specimen from the Postglacial (spl. no. 24) of boring no. I, Løkken. 15: Edge view of same specimen; × 80.
- Fig. 16. *Laryngosigma hyalascidia* Loeblich & Tappan 221
Specimen from the Lateglacial (spl. no. 7) of boring no. I, Løkken; × 80.

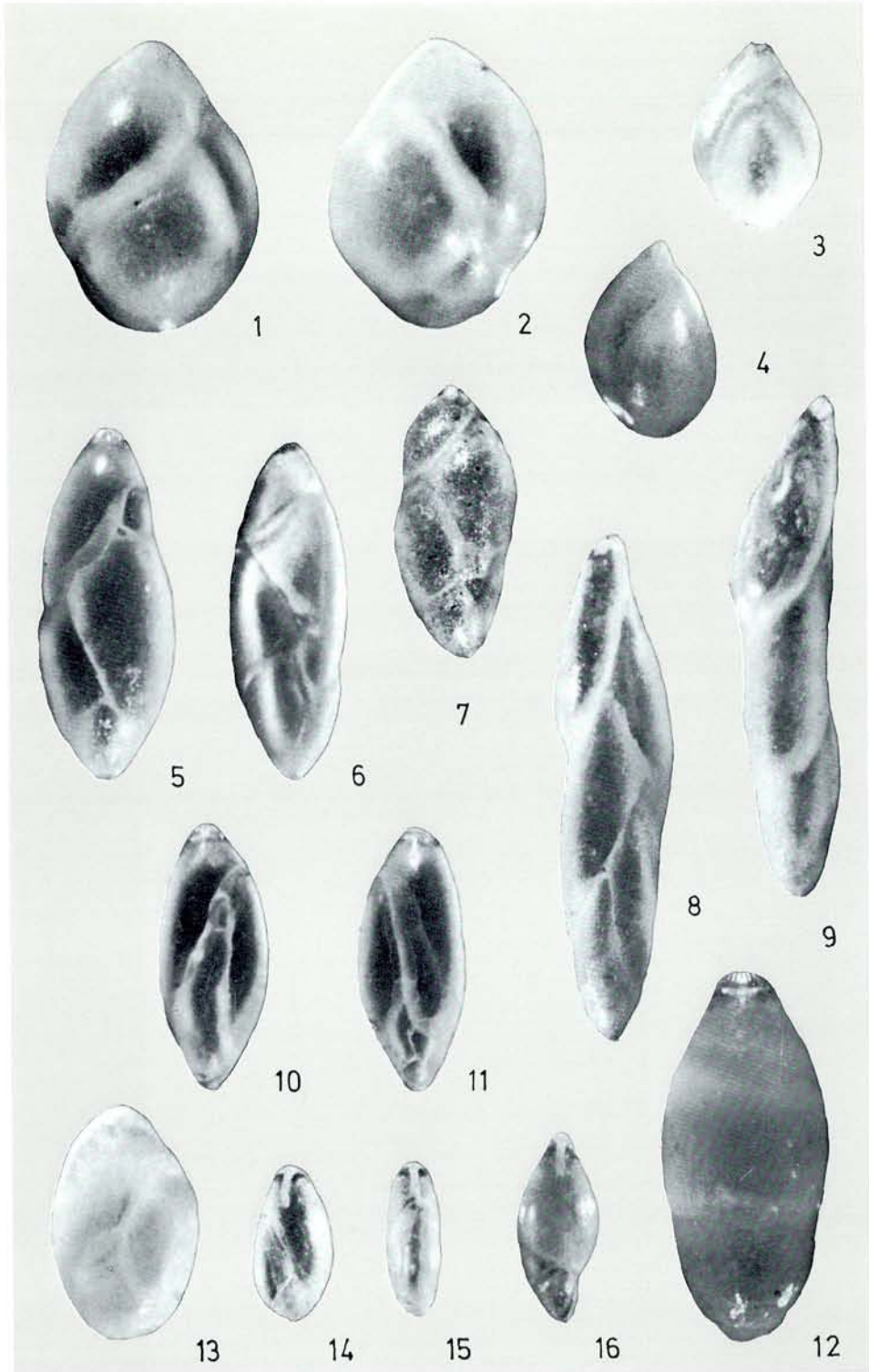


Plate 6

Glandulinidae, Buliminidae.

Fig. 1. <i>Oolina acuticosta</i> (Reuss)	222
From the Lateglacial (spl. no. 3) of boring no. III, Løkken; × 80.	
Fig. 2. <i>Oolina borealis</i> Loeblich & Tappan	223
From "Mellemlag", Nygaard brickworks, Karmøy; × 70.	
Fig. 3. <i>Oolina caudigera</i> (Wiesner)	224
From Lateglacial (spl. no. 2) of boring no. III, Løkken; × 80.	
Fig. 4. <i>Oolina desmophora</i> (Jones)	224
From the Postglacial (spl. no. 15) of boring no. IV, Løkken; × 80.	
Fig. 5. <i>Oolina melo</i> d'Orbigny	226
From the Lateglacial (spl. no. 2) of boring no. III, Løkken; × 80.	
Figs. 6–7. <i>Fissurina danica</i> (Madsen)	228
6: Side view of specimen from Older <i>Yoldia</i> Clay, Frederikshavn; × 90. 7: Edge view of specimen from the Lateglacial (spl. no. 2) of boring no. III, Løkken; × 80.	
Fig. 8. <i>Fissurina orbignyana</i> Seguenza	230
From Older <i>Yoldia</i> Clay (spl. no. 16 B), Hirtshals; × 90.	
Fig. 9. <i>Fissurina serrata</i> (Schlumberger)	231
From Older <i>Yoldia</i> Clay, Frederikshavn; × 90.	
Figs. 10–11. <i>Parafissurina himatiostoma</i> Loeblich & Tappan	232
10: Front view of a specimen from <i>Zirfaea</i> layers, Skeen Møllebæk. 11: Side view of same specimen; × 90.	
Figs. 12–13. <i>Parafissurina lateralis</i> (Cushman), forma <i>carinata</i> (Buchner)	233
Side and edge view of a specimen from the Lateglacial (spl. no. 1) of boring no. III, Løkken; × 80.	
Fig. 14. <i>Parafissurina tectulostoma</i> Loeblich & Tappan	233
From the Lateglacial (spl. no. 1) of boring no. III, Løkken; × 80.	
Fig. 15. <i>Buliminella elegantissima</i> (d'Orbigny)	234
From the Postglacial (spl. no. 24) of boring no. I, Løkken; × 80.	
Fig. 16. <i>Bulimina fossa</i> Cushman & Parker	235
From the Lateglacial (spl. no. 3) of boring no. I, Løkken; × 80.	
Figs. 17–20. <i>Bulimina marginata</i> d'Orbigny	235
17: From zone 1 (3.3 m) of boring no. I, Sandnes; × 66. 18: From Older <i>Yoldia</i> Clay, Frederikshavn; × 68. 19: Specimen from the Lateglacial (spl. no. 1) of boring no. IV, Løkken; × 80. 20: Specimen of <i>gibba</i> form from zone 1 (6.80 m) of boring no. II, Sandnes; × 78.	
Fig. 21. <i>Bulimina striata</i> d'Orbigny	236
From the Lateglacial (spl. no. 3) of boring no. I, Løkken; × 80.	
Fig. 22. <i>Globobulimina auriculata arctica</i> Höglund	236
Specimen from Older <i>Yoldia</i> Clay (spl. no. 54 C), Hirtshals; × 60.	
Fig. 23. <i>Globobulimina turgida</i> (Bailey)	237
From Older <i>Yoldia</i> Clay (spl. no. 69 A), Hirtshals; × 60.	

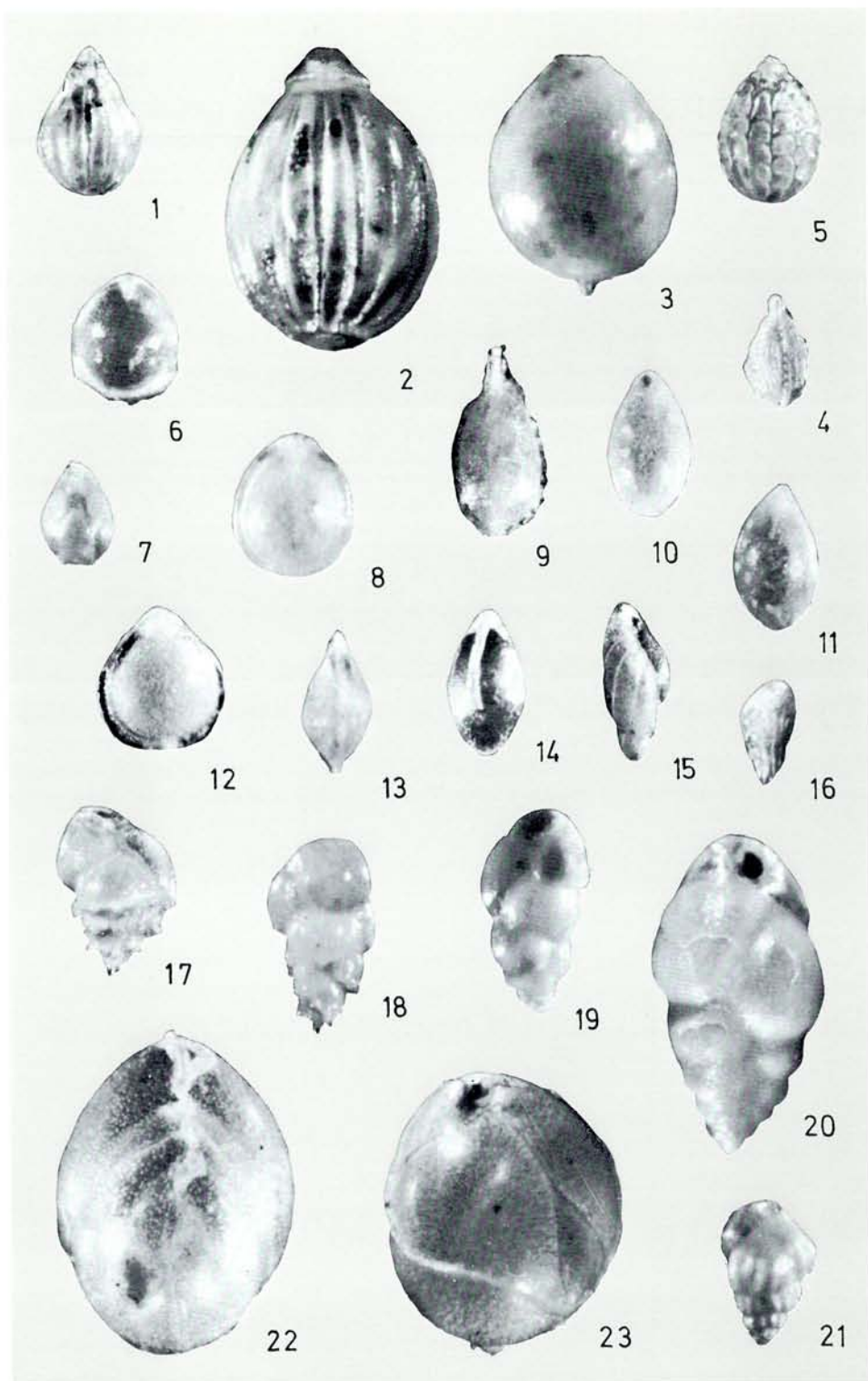


Plate 7

Buliminidae, Uvigerinidae, Bolivinitidae, Cassidulinidae.

Figs. 1–5. *Virgulina loeblichii* Feyling-Hanssen 238
1: Specimen from Older *Yoldia* Clay, Frederikshavn; × 90. 2: Specimen from the Lateglacial (spl. no. 5) of boring no. III, Løkken; × 80. 3: Specimen from zone 1 (12.40 m) of boring no. II, Sandnes; × 68. 4: Specimen from Nygaard brickworks, Karmøy; × 66. 5: Specimen from Elgane, Jæren; × 68.

Figs. 6–8. *Virgulina schreibersiana* Czjzek 240
6: Specimen from the Lateglacial (spl. no. 3) of boring no. I, Løkken; × 80. 7–8: Specimen from Older *Yoldia* Clay, Stortorn; × 80.

Figs. 9–11. *Uvigerina peregrina* Cushman 240
9: Specimen from Elgane, Jæren; the specimen was lost before it was measured. 10: Specimen from Older *Yoldia* Clay (spl. no. 54 C), Hirtshals; × 60. 11: Small specimen from the Postglacial (spl. no. 15) of boring no. IV, Løkken; × 55.

Figs. 12–15. *Trifarina fluens* (Todd) 242
12: Specimen from zone 1 (16.25 m) of boring no. II, Sandnes; × 66. 13–14: Specimen from zone 1 (7.05 m) of boring no. I, Sandnes; × 65. 15: Specimen from Older *Yoldia* Clay, Frederikshavn; × 90.

Fig. 16. *Bolivina pseudoplicata* Heron-Allen & Earland 243
From the Postglacial (spl. no. 24) of boring no. I, Løkken; × 80.

Fig. 17. *Bolivina* cf. *robusta* Brady 244
From Older *Yoldia* Clay, Stortorn; × 90.

Figs. 18–19. *Cassidulina crassa* d'Orbigny 245
Side view and edge view of a specimen from Older *Yoldia* Clay, (profile A, spl. no. 9), Løkkens Blånæse; × 80.

Figs. 20–21. *Cassidulina laevigata* d'Orbigny 246
Side view and edge view of a specimen from the Lateglacial (spl. no. 2) of boring no. I, Løkken; × 80.

Figs. 22–25. *Islandiella islandica* Nørvang 247
22–23: Side view and apertural view of a specimen from zone 1 (7.05 m) of boring no. I, Sandnes; × 67. 24–25: Apertural view and side view of a specimen from Older *Yoldia* Clay (profile A, spl. no. 9), Løkkens Blånæse; × 60.

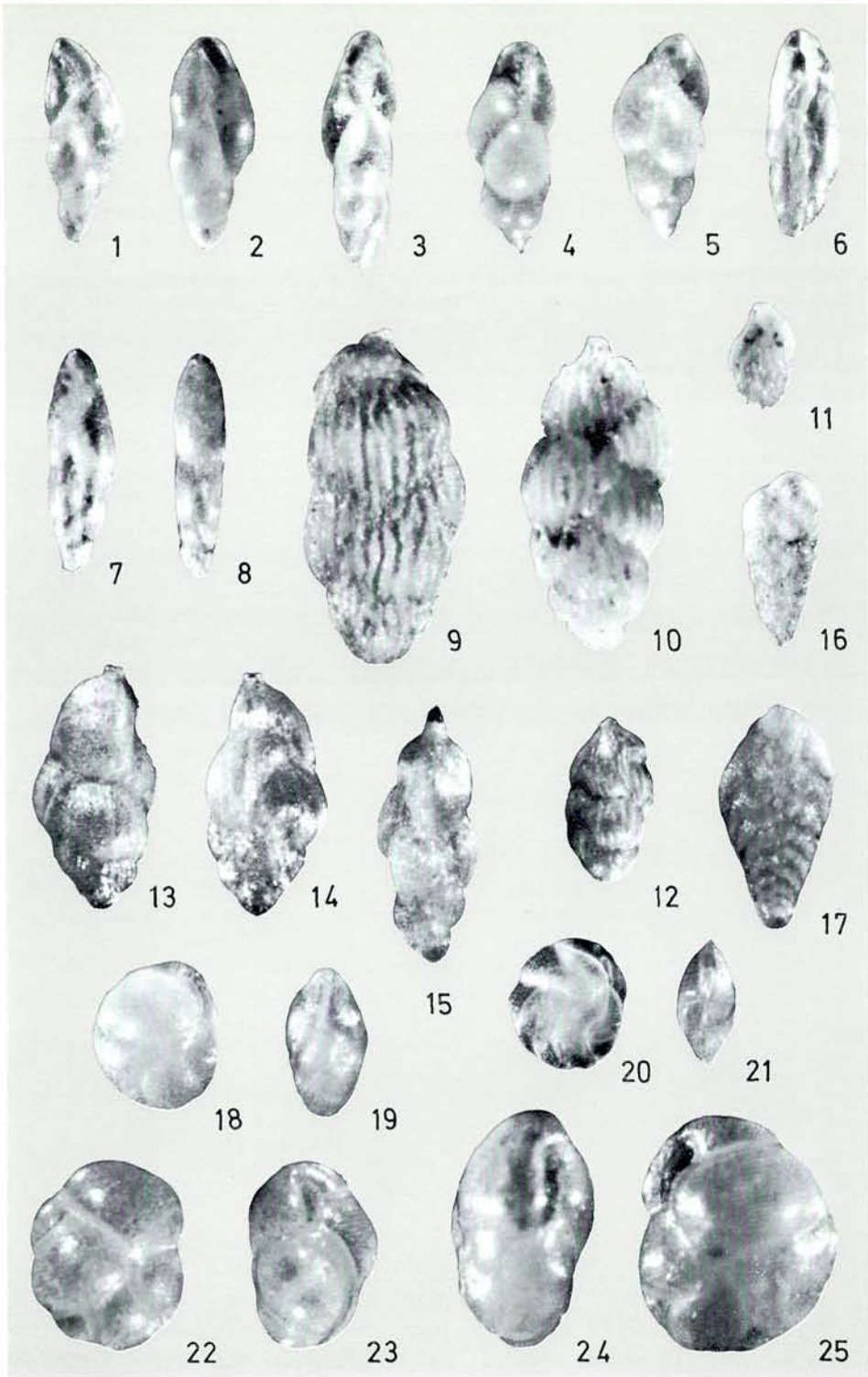


Plate 8

Cassidulinidae, Chilostomellidae, Robertinidae, Discorbidae.

- Figs. 1–2. *Islandiella norcrossi* (Cushman) 248
Two specimens from zone 1 (12.40 m) of boring no. II, Sandnes; × 63.
- Figs. 3–6. *Islandiella teretis* (Tappan) 249
3–4: Opposite sides of a specimen from zone 1 (8.60 m) of boring no. II, Sandnes; × 68. 5–6: Edge view and side view of specimen from Older *Yoldia* Clay (profile A, spl. no. 9), Løkkens Blånæse; × 60.
- Figs. 7–9. *Allomorphina fragilis* Hofker 250
7: Edge view, 8: Umbilical view, 9: Spiral view of a specimen from the Lateglacial (spl. no. 2) of boring no. I, Løkken; × 65.
- Figs. 10–11. *Robertinoides pumilum* Höglund 251
Specimen from Older *Yoldia* Clay (spl. no. 53 D), Hirtshals; × 90.
- Figs. 12–14. *Buccella frigida* (Cushman) 253
12: Umbilical view, 13: Edge view, 14: Spiral view of a specimen from zone 1 (12.40 m) of boring no. II, Sandnes; × 64.
- Figs. 15–17. *Buccella tenerrima* (Bandy) 254
Specimen from Elgane, Jæren; × 67.
- Figs. 18–20. *Rosalina vilardeboana* d'Orbigny 256
Specimen from zone 1 (8.60 m) of boring no. II, Sandnes; × 70.

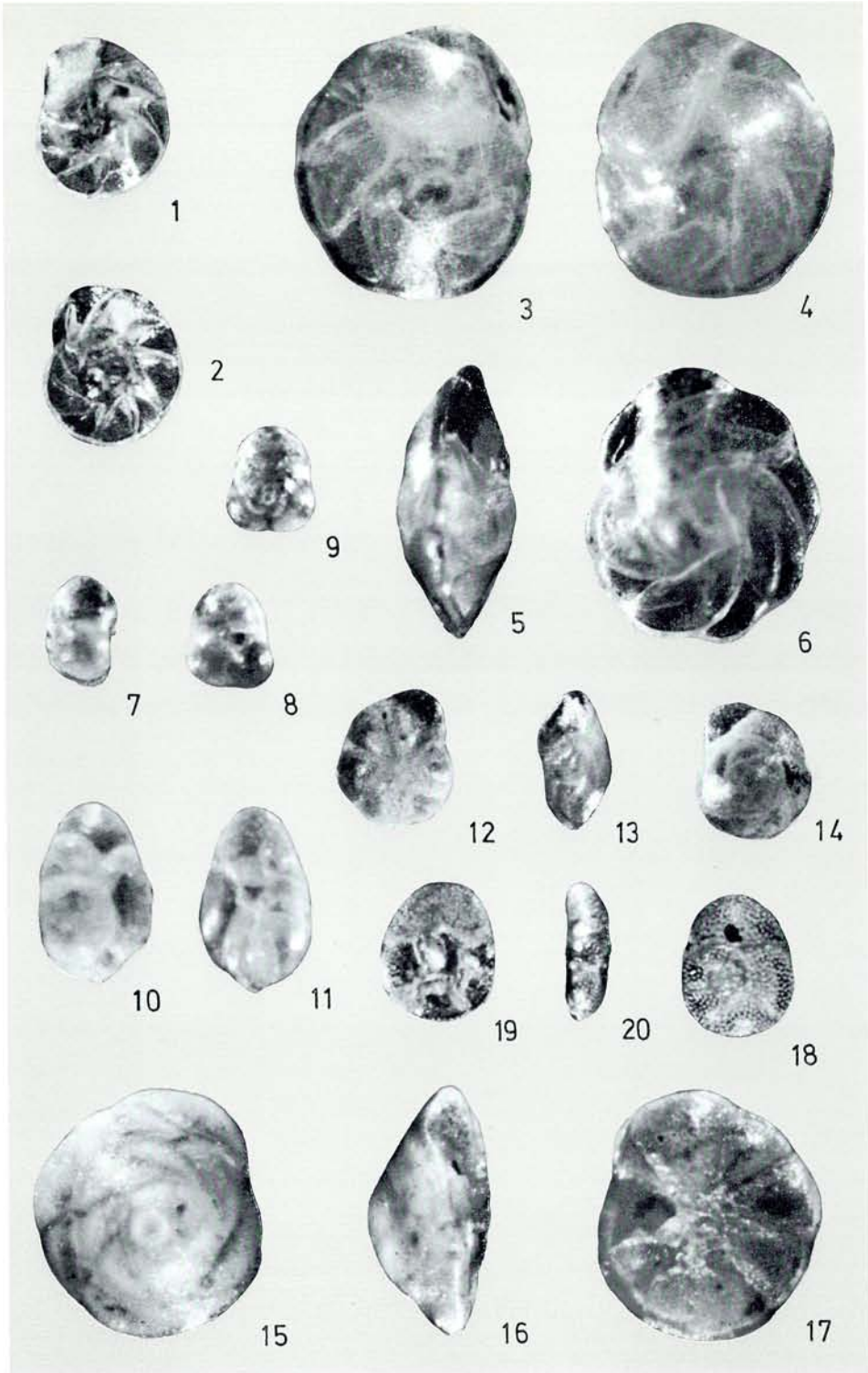


Plate 9

Anomalinidae, Planorbulinidae, Nonionidae.

- Figs. 1–3. *Anomalina globulosa* Chapman & Parr 258
A specimen from the Postglacial (spl. no. 22) of boring no. I, Løkken; × 65.
- Figs. 4–6. *Planulina ariminensis* d'Orbigny 258
Umbilical view, edge view and spiral view of a specimen from zone 1 (16.25 m) of boring no. II, Sandnes; × 68.
- Figs. 7–8. *Hyalinea baltica* (Schroeter) 259
Opposite sides of a specimen from zone 1 (11.55 m) of boring no. II, Sandnes; × 67.
- Figs. 9–14. *Cibicides lobatulus* (Walker & Jacob) 260
9: Edge view, 10: Umbilical view, 11: Spiral view of a specimen from Older *Yoldia* Clay (profile A, spl. no. 9), Løkkens Blånæse; × 60. 12–14: A specimen from Reve, Jæren; × 70.
- Figs. 15–18. *Nonion barleeaanum* (Williamson) 261
15–16: A specimen from Older *Yoldia* Clay (profile G, spl. no. 7), Løkkens Blånæse; × 60. 17–18: Specimen from zone 1 (16.25 m) of boring no. II, Sandnes; × 70.

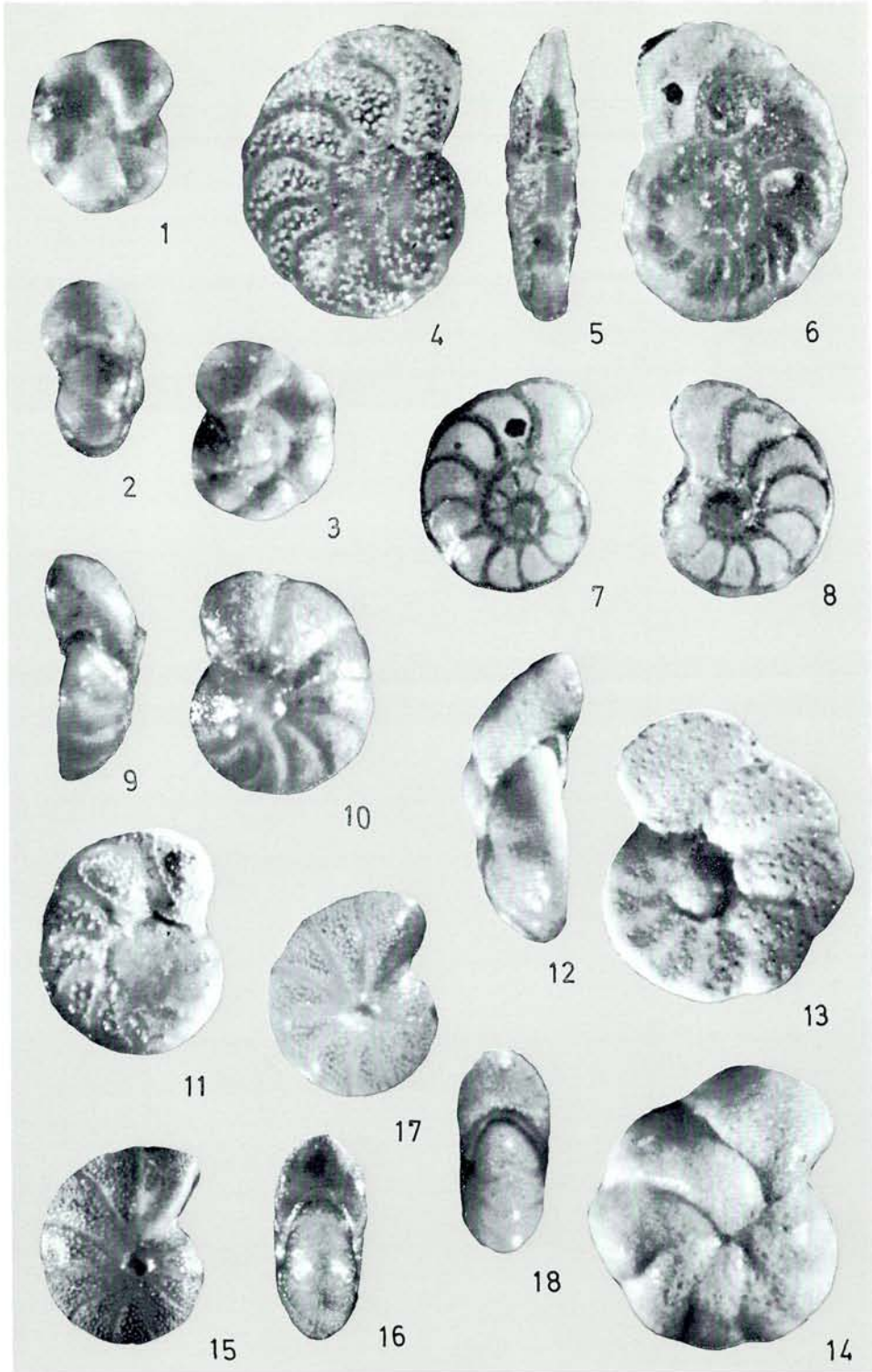


Plate 10

Nonionidae, Elphidiidae.

- Figs. 1–2. *Nonion labradoricum* (Dawson) 262
Specimen from zone 1 (12.40 m) of boring no. II, Sandnes; × 61.
- Figs. 3–4. *Nonion umbilicatum* (Walker & Jacob) 263
A specimen from Older *Yoldia* Clay (spl. no. 10 A), Hirtshals; × 75.
- Figs. 5–6. *Nonionella* aff. *auricula* Heron-Allen & Earland 264
A specimen from zone 1 (8.85 m) of boring no. I, Sandnes; × 70.
- Figs. 7–9. *Nonionella auricula* Heron-Allen & Earland 265
7: Spiral view, 8: Edge view, 9: Umbilical view of a specimen from zone 1 (3.9 m) of boring no. I, Sandnes; × 68.
- Figs. 10–12. *Astrononion gallowayi* Loeblich & Tappan 266
10: Specimen from Lateglacial *Yoldia* Clay of Bindslev; × 70. 11–12: Specimen from Nygaard brickworks, Karmøy; × 65.
- Figs. 13–14. *Pullenia bulloides* Parker & Jones 266
Specimen from zone 1 (16.25 m) of boring no. II, Sandnes; × 63.
- Figs. 15–19. *Elphidium albumbilicatum* (Weiss) 268
15: Specimen from Older *Yoldia* Clay (spl. no. 15 C), Hirtshals; × 90. 16–17: Specimen from Postglacial (spl. no. 17) of boring no. I, Løkken; × 80. 18–19: Specimen from boring no. VI (20.0 m), Sandnes; × 66.
- Figs. 20–21. *Elphidium asklundi* Brotzen 270
Specimen from Older *Yoldia* Clay at Løkkens Blånæse (profile A, spl. no. 9); × 35.

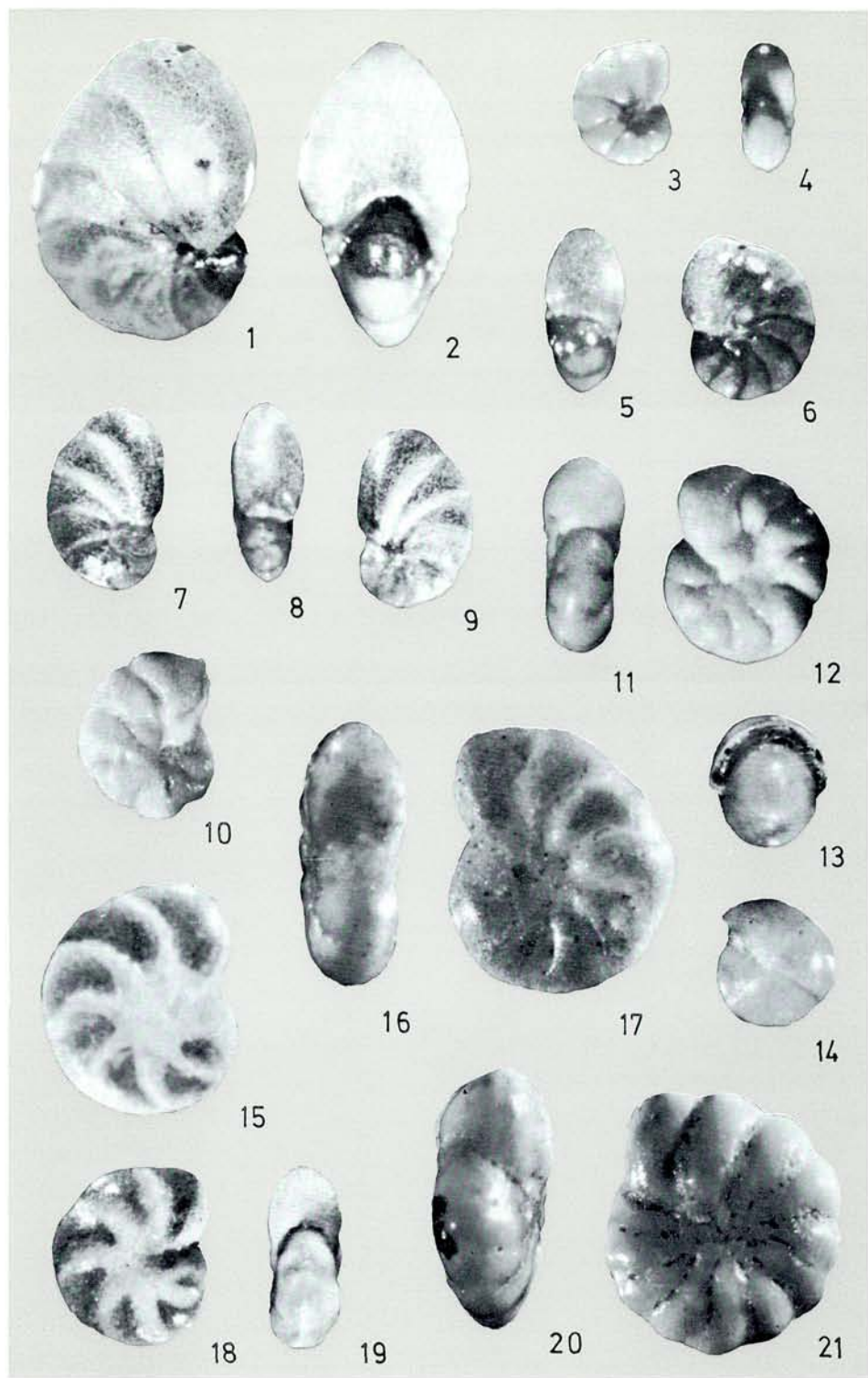


Plate 11

Elphidiidae.

- Figs. 1–5. *Elphidium asklundi* Brotzen 270
1: Specimen from Older *Yoldia* Clay at Stortorn; × 45. 2–3: Specimen from zone 1 (12.40 m) of boring no. II, Sandnes; × 61. 4–5: Specimen from Older *Yoldia* Clay (spl. no. 51 L), Hirtshals; × 45.
- Figs. 6–9. *Elphidium bartletti* Cushman 271
6–7: Specimen from zone 1 (8.85 m) of boring no. I, Sandnes; × 67. 8–9: Specimen from boring no. VI (20.0 m), Sandnes; × 65.
- Figs. 10–13. *Elphidium clavatum* Cushman 273
10–11: Specimen from zone 1 (16.25 m) of boring no. II, Sandnes; × 65. 12: Specimen from Lateglacial (spl. no. 1) of boring no. III, Løkken; × 80. 13: Specimen from zone 1 (16.40 m) of boring no. II, Sandnes; × 61.
- Fig. 14. *Elphidium gerthi* van Voorthuysen 274
A specimen from the Postglacial (spl. no. 10) of boring no. II, Løkken; × 80.

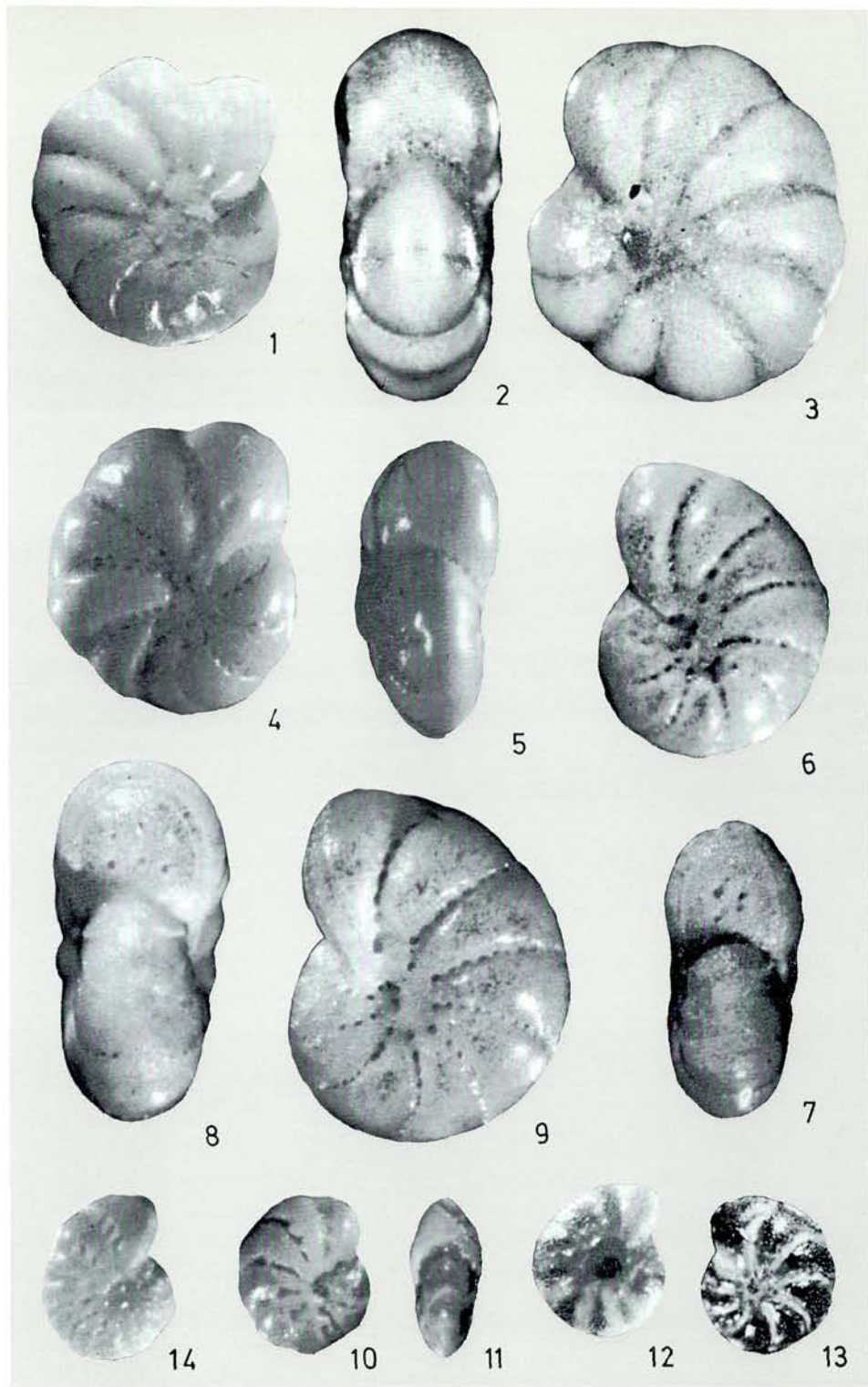


Plate 12

Elphidiidae.

- Figs. 1–8. *Elphidium groenlandicum* Cushman 275
1–2: Specimen from zone 1 (8.85 m) of boring no. I, Sandnes; × 66. 3: Specimen from Elgane, Jæren; × 71. 4–5: Specimen from Older *Yoldia* Clay of Løkkens Blånæse (profile G, spl. no. 2); × 45. 6–7: Specimen from Older *Yoldia* Clay (spl. no. 66 E), Hirtshals; × 45. 8: Specimen from Older *Yoldia* Clay at Frederikshavn; × 23.
- Figs. 9–10. *Elphidium gunteri* Cole 277
Specimen from Older *Yoldia* Clay (spl. no. 47 B), Hirtshals; × 45.
- Figs. 11–12. *Elphidium incertum* (Williamson) 277
Specimen from the Postglacial (spl. no. 8) of boring no. III, Løkken; × 60.
- Figs. 13–14. *Elphidium macellum* (Fichtel & Moll) 278
13: Edge view, 14: Side view of a specimen from the Postglacial (spl. no. 19) of boring no. I, Løkken; × 60.
- Figs. 15–16. *Elphidium magellanicum* Heron-Allen & Earland 279
A specimen from the Postglacial (spl. no. 6) of boring no. III, Løkken; × 80.

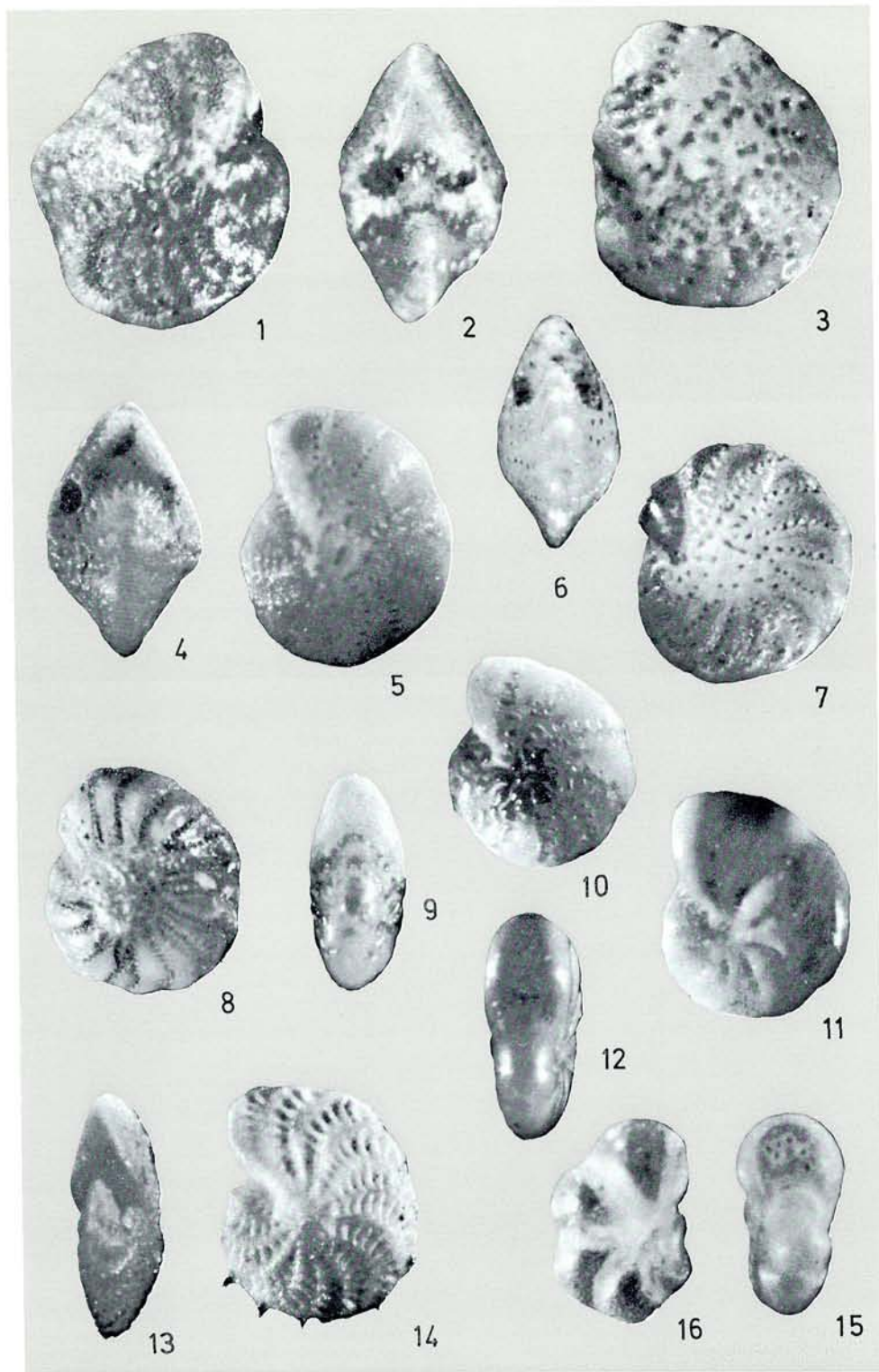


Plate 13

Elphidiidae.

- Figs. 1–2. *Elphidium margaritaceum* Cushman 279
1: Edge view, 2: Side view of a specimen from the Postglacial (spl. no. 6) of boring no. III, Løkken; × 80.
- Figs. 3–7. *Elphidium subarcticum* Cushman 280
3–4: Specimen from Nygaard brickworks, Karmøy; × 67. 5: Specimen from Older Yoldia Clay at Stortorn; × 70. 6–7: Specimen from Older Yoldia Clay (spl. no. 53 C), Hirtshals; × 45.
- Figs. 8–11. *Elphidium umbilcatulum* (Williamson) 281
8–9: Specimen from the Postglacial (spl. no. 17) of boring no. I, Løkken; × 80. 10–11: Specimen from Reve, Jæren; × 67.
- Figs. 12–13. *Elphidium ustulatum* Todd 283
Specimen from Elgane, Jæren; × 68.
- Figs. 14–17. *Cryptoelphidiella itriaensis* Feyling-Hanssen n. gen., n. sp. 285
14: Holotype (MMH no. 12116) from zone 3 (23,87 m) of boring no. II, Sandnes; × 63. 15: Specimen from the same sample; × 62. 16–17: Specimen from zone 3 (15.05 m) of boring no. I, Sandnes; × 67.

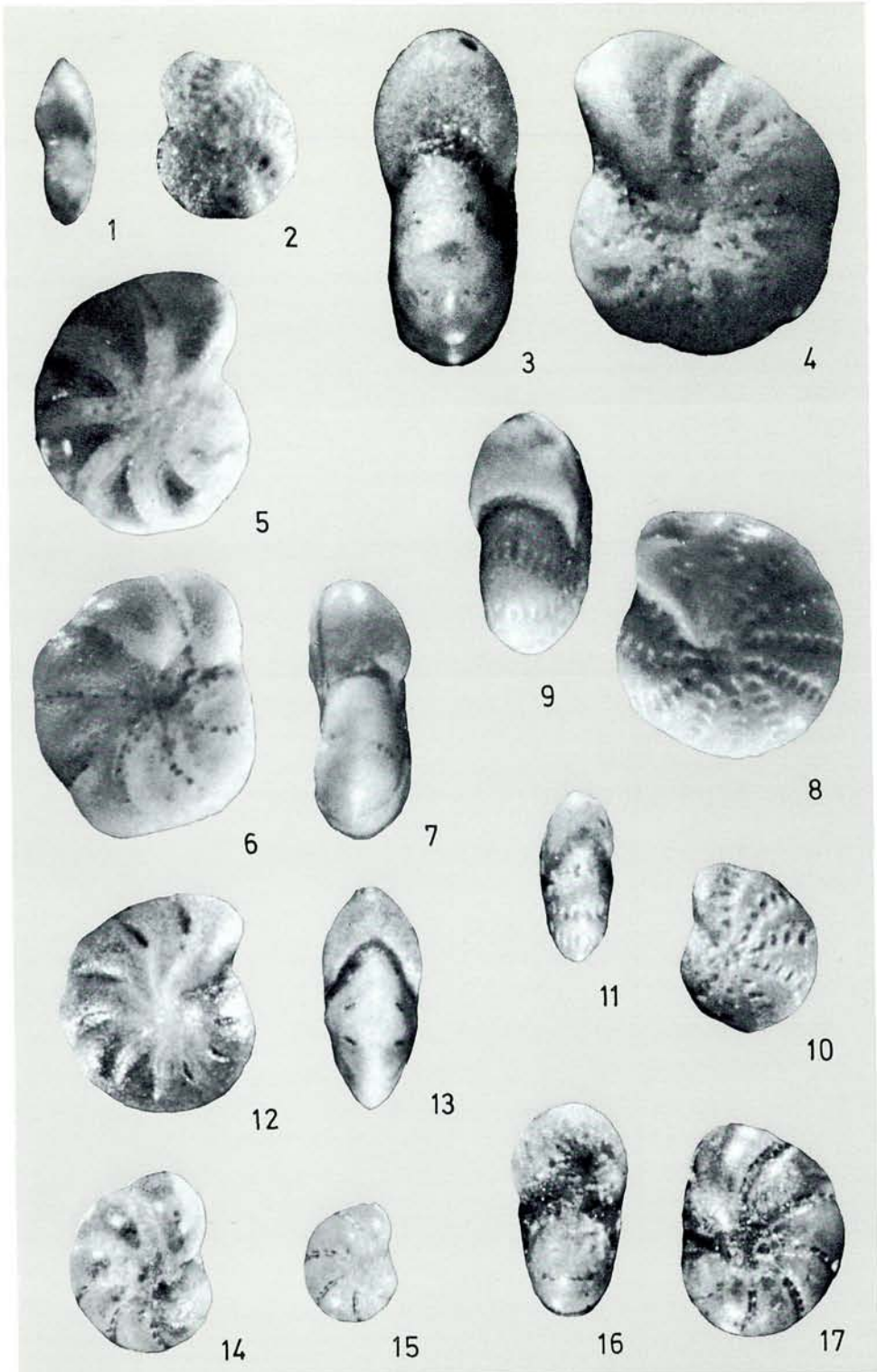


Plate 14

Elphidiidae, Rotaliidae.

- Fig. 1. *Elphidiella arctica* (Parker & Jones) 284
Specimen from Nygaard brickworks, Karmøy; × 74.
- Figs. 2–5. *Protelphidium anglicum* Murray 286
2–3: Specimen from the Postglacial (spl. no. 17) of boring no. I, Løkken; × 80. 4–5:
Specimen from the Postglacial at Birkelse; × 90.
- Figs. 6–7. *Protelphidium niveum* (Lafrenz) 288
A specimen from Older *Yoldia* Clay at Stortorn; × 90.
- Figs. 8–11. *Protelphidium orbiculare* (Brady) 289
8–9: Specimen from Older *Yoldia* Clay at Løkkens Blånæse (profile G, spl. no. 2); ×
60. 10–11: Specimen from Nygaard brickworks, Karmøy; × 65.
- Figs. 12–13. *Ammonia batavus* (Hofker) 290
Umbilical view and spiral view of a specimen from the Postglacial (spl. no. 17) of
boring no. I, Løkken; × 60.

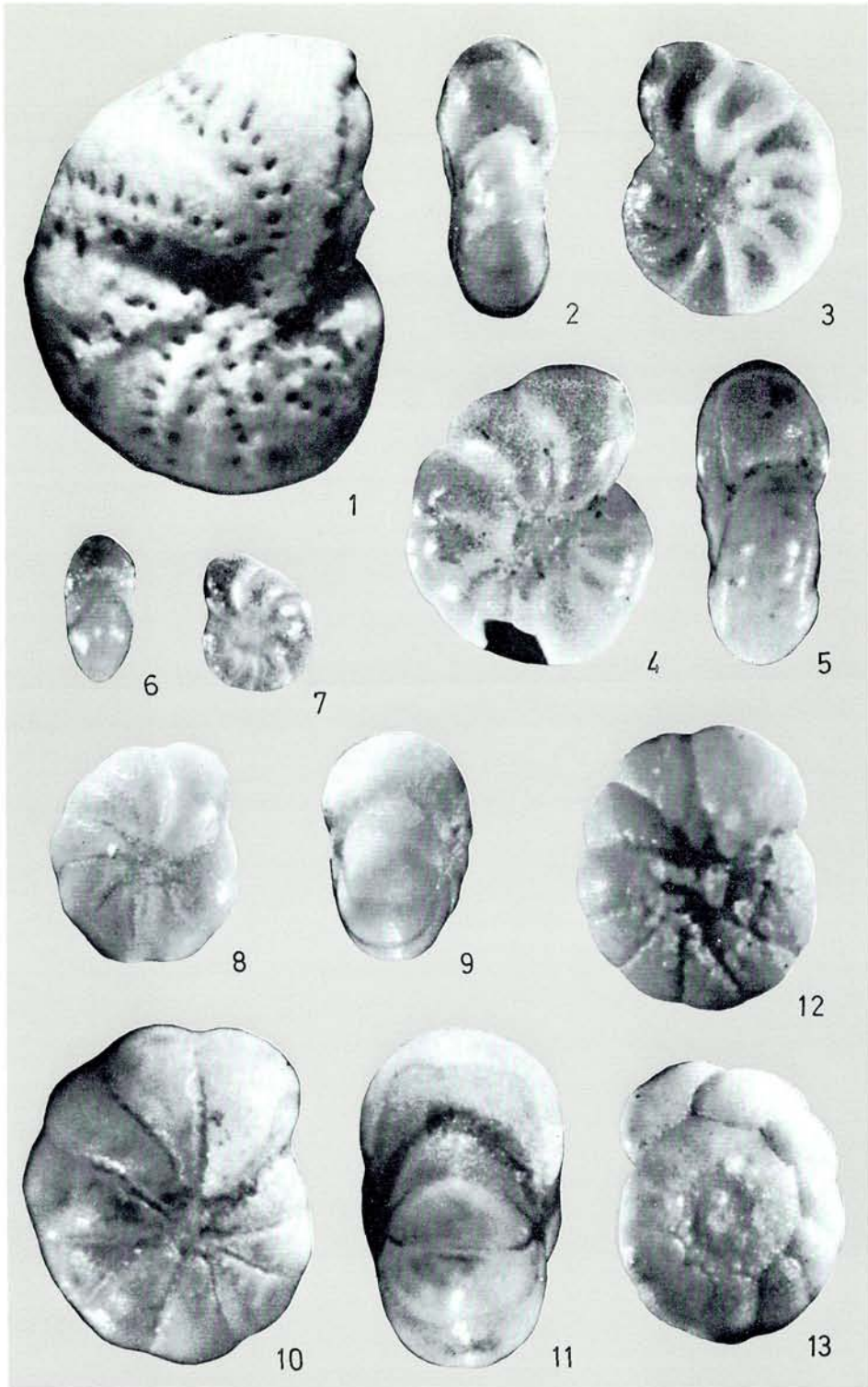


Plate 15

Rzehakinidae, Lituolidae, Ataxophragmiidae, Miliolidae.

- Figs. 1–3. *Miliammina fusca* (Brady) 188
1: Specimen from the Postglacial (spl. no. 29) of boring no. I, Løkken; × 160. 2: Detail; × 450. 3: Detail; × 2250.
- Fig. 4. *Ammoscalaria runiana* (Heron-Allen & Earland) 189
From the Postglacial (spl. no. 29) of boring no. I, Løkken; × 145.
- Figs. 5–7. *Eggerella scabra* (Williamson) 192
5: Recent specimen from the Limfjord in northern Jutland; × 73. 6: Detail of its wall; × 525. 7: Detail of the wall of the same specimen; × 2600.
- Fig. 8. *Triloculina trihedra* Loeblich & Tappan 196
Apertural view of specimen from zone 3 (23.87 m) of boring no. II, Sandnes; × 180.
- Fig. 9. *Pyrgo williamsoni* (Silvestri) 196
Front view of specimen from Older *Yoldia* Clay (spl. no. 33 B), Hirtshals; × 110.
- Fig. 10. *Biloculinella depressa* (d'Orbigny) 198
From Older *Yoldia* Clay, Løkkens Blånæse, (profile F, spl. no. 1); × 75.

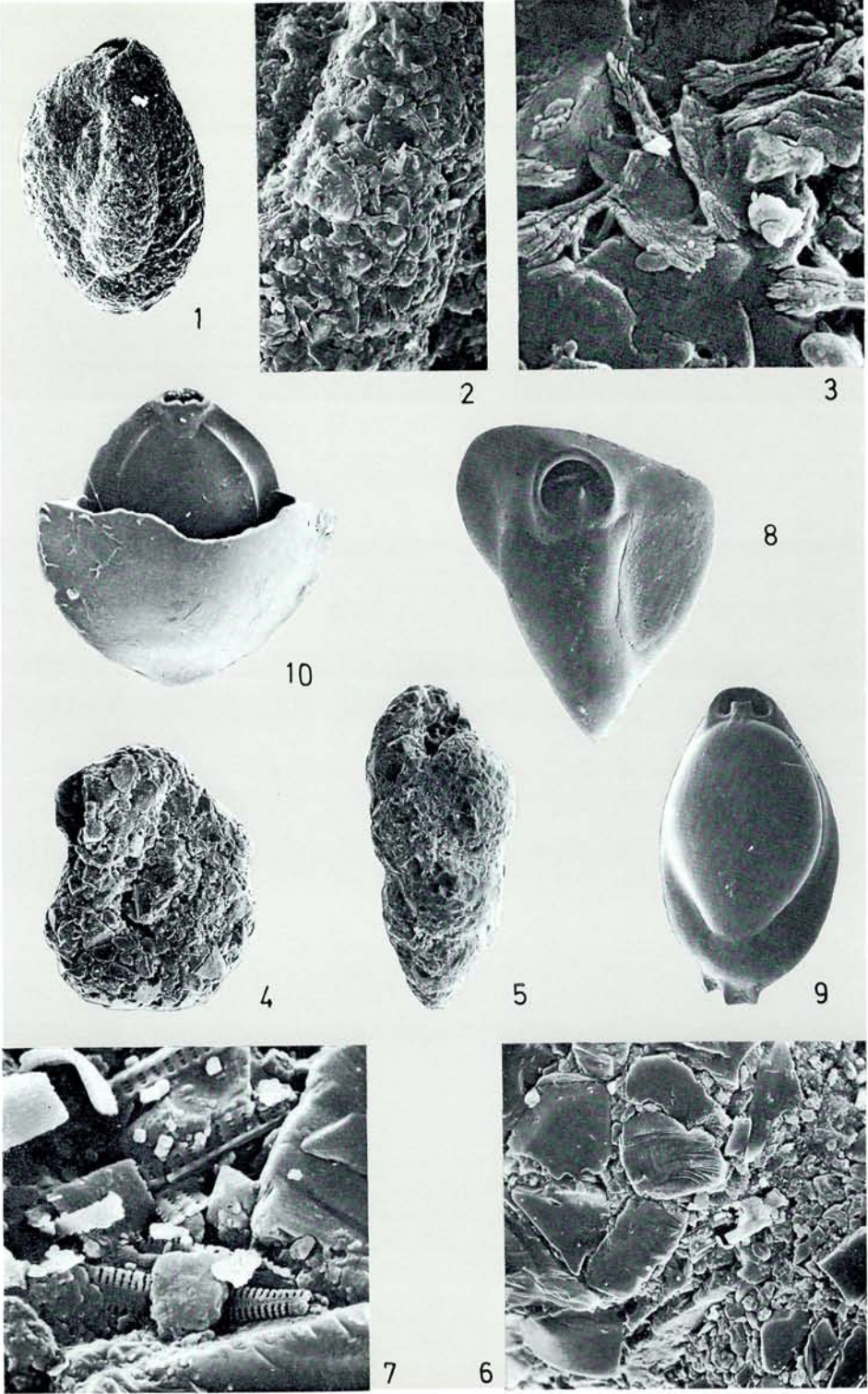


Plate 16

Nodosariidae.

- Fig. 1. *Amphicoryna scalaris* (Batsch) 204
A specimen from *Zirfaea* layers at Blødegrøft; × 190.
- Fig. 2. *Lagena semilineata* Wright 209
Detail of the middle part of the test of a specimen from Older *Yoldia* Clay (spl. no. 5 A), Hirtshals; × 230.
- Figs. 3–4. *Lagena striata* d'Orbigny, forma *substriata* Williamson 209
3: Detail of a specimen from Older *Yoldia* Clay (spl. no. 77 A), Hirtshals; × 520.
4: Same specimen; × 160.
- Fig. 5. *Lagena striata* d'Orbigny, forma *typica* 210
Specimen from Older *Yoldia* Clay (spl. no. 13 D), Hirtshals; × 170.
- Fig. 6. *Lagena trigono-laevigata* Balkwill & Millett 211
Specimen from the Postglacial (spl. no. 19) of boring no. I, Løkken; × 350.
- Figs. 7–9. *Lagena sulcata laevicostata* Cushman & Gray 210
7: Basal view of specimen from Older *Yoldia* Clay (spl. no. 53 E), Hirtshals; × 220.
8: Detail showing high and thin costae at the junction between test and neck; × 310.
9: Entire specimen; × 120.
- Figs. 10–11. *Lagena hirtshalsensis* A. L. Andersen, n. sp. 206
10: Paratype from Older *Yoldia* Clay (spl. no. 40 A), Hirtshals; × 130. 11: Detail of the spine-armed ribs; × 325.

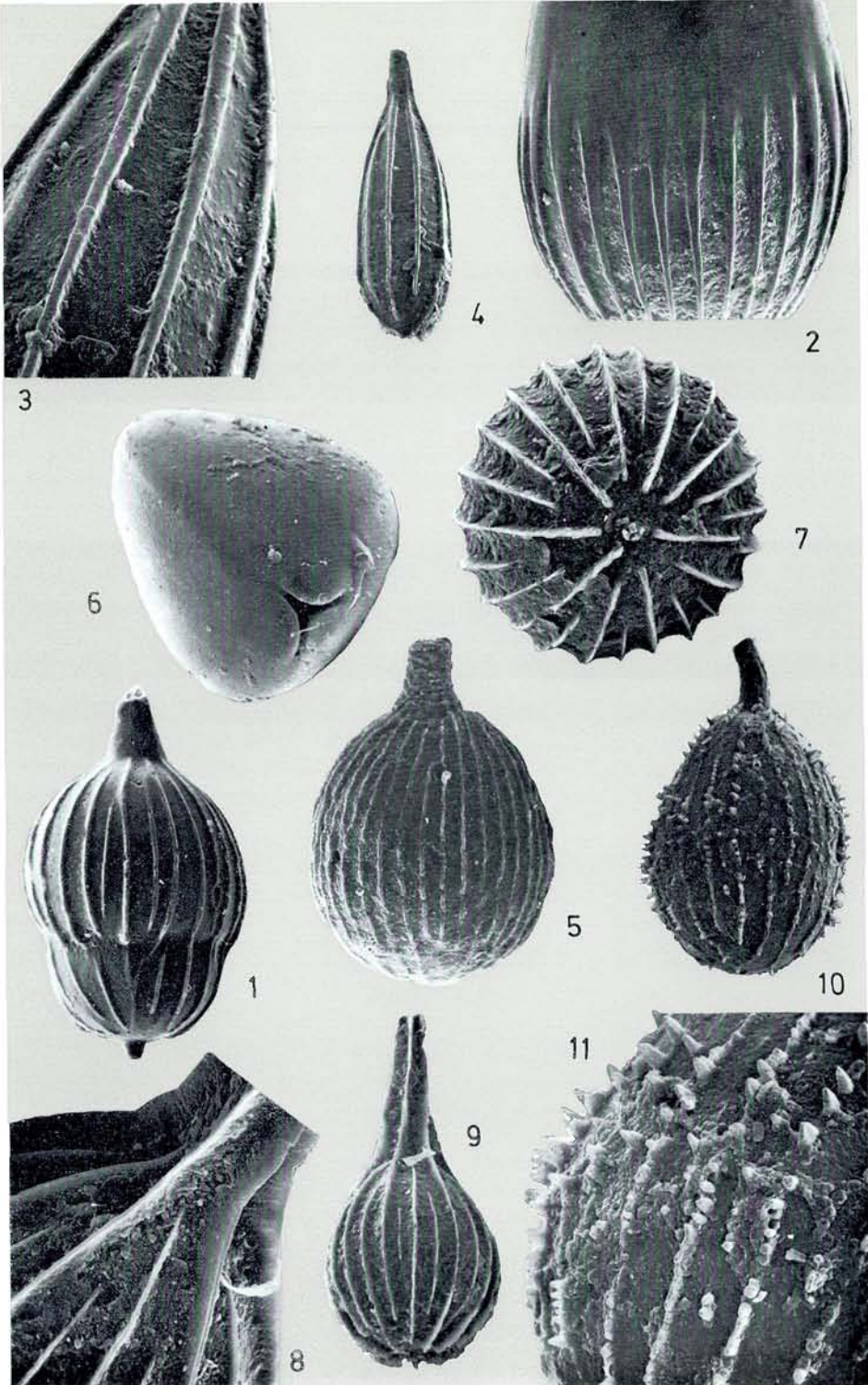


Plate 17

Glandulinidae.

- Fig. 1. *Oolina acuticosta* (Reuss) 222
A specimen from Older *Yoldia* Clay (spl. no. 81 H), Hirtshals; × 160.
- Figs. 2–4. *Oolina borealis* Loeblich & Tappan 223
2: Detail of the upper part of the test of a specimen from “Mellemlag”, Nygaard brickworks, Karmøy; × 210. 3: Detail of basal part of the same specimen; × 160. 4: The entire specimen; × 75.
- Fig. 5. *Oolina desmophora* (Jones) 224
From the Postglacial (spl. no. 15) of boring no. IV, Løkken; × 250.
- Fig. 6. *Oolina hexagona* (Williamson) 224
A small specimen from the Lateglacial (spl. no. 4) of boring no. I, Løkken; × 225.
- Figs. 7–8. *Oolina lineata* (Williamson) 225
7: Specimen from Older *Yoldia* Clay (spl. no. 34 A), Hirtshals; × 150. 8: Detail of aperture of the same specimen; × 240.
- Fig. 9. *Oolina melo* d’Orbigny 226
A specimen from the Lateglacial (spl. no. 2) of boring no. III, Løkken; × 180.
- Fig. 10. *Oolina squamosa* (Montagu) 226
A specimen from the Lateglacial (spl. no. 2) of boring no. IV, Løkken; × 260.
- Fig. 11. *Oolina striatopunctata* (Parker & Jones) 227
Detail of a specimen from Older *Yoldia* Clay (spl. no. 68 B), Hirtshals; × 660.

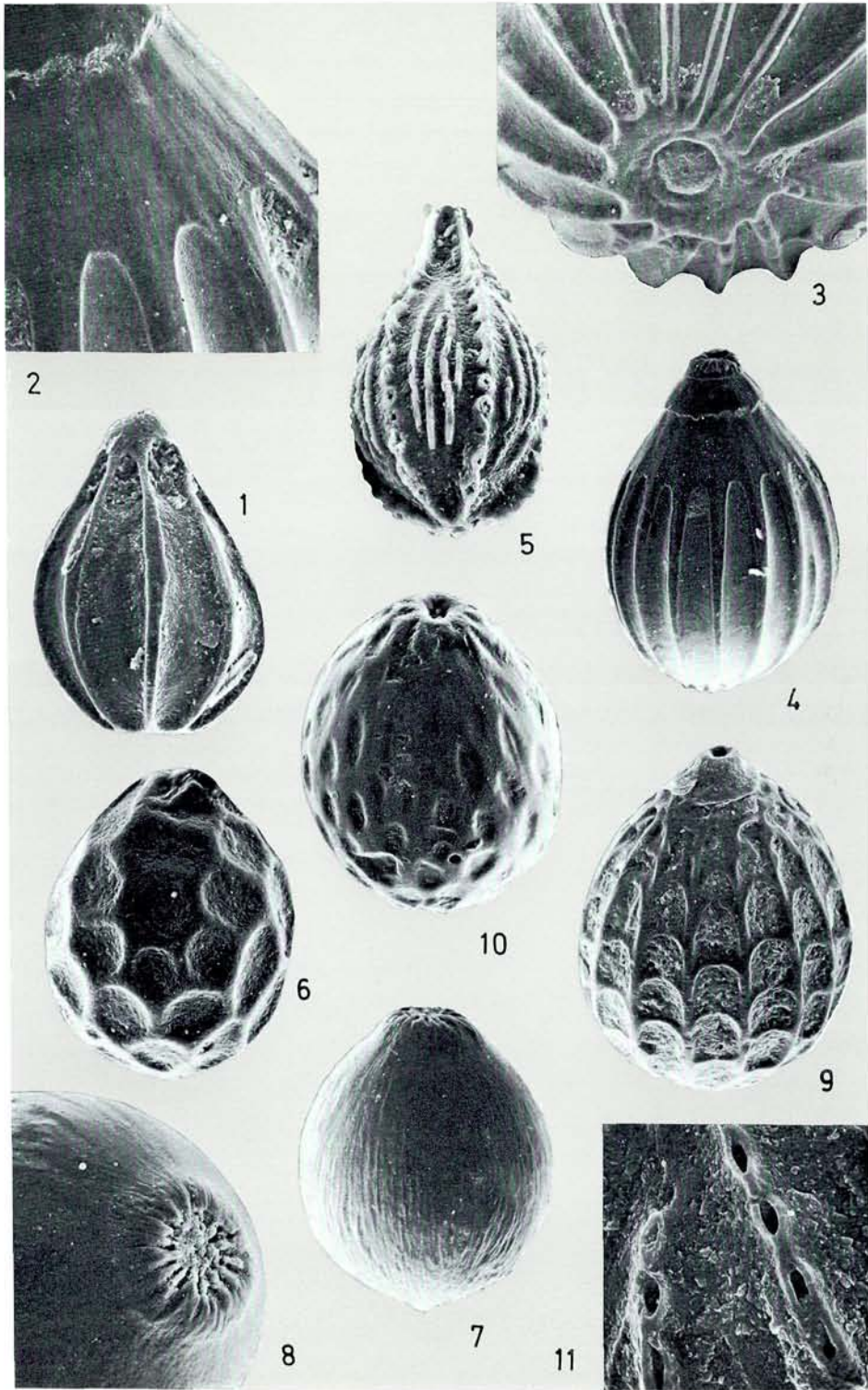


Plate 18

Glandulinidae, Buliminidae, Uvigerinidae, Bolivinitidae, Cassidulinidae.

- Figs. 1–2. *Oolina williamsoni* (Alcock) 227
1: Detail of apertural end of specimen from “Mellemlag”, Nygaard brickworks, Karmøy; × 250. 2: Entire specimen; × 100.
- Fig. 3. *Fissurina danica* (Madsen) 228
Basal view of a specimen from zone 1 (15.20 m) of boring no. IV, Sandnes; × 280.
- Figs. 4–5. *Fissurina serrata* (Schlumberger) 231
4: Detail of the margin of a specimen from Older *Yoldia* Clay (spl. no. 54 C), Hirtshals; × 470. 5: Entire specimen; × 150.
- Fig. 6. *Parafissurina fusuliformis* Loeblich & Tappan 232
Specimen from Older *Yoldia* Clay (spl. no. 6 B), Hirtshals; × 170.
- Fig. 7. *Bulimina fossa* Cushman & Parker 235
Specimen from the Lateglacial (spl. no. 3), of boring no. I, Løkken; × 230.
- Figs. 8–9. *Trifarina angulosa* (Williamson) 241
8: A specimen from Older *Yoldia* Clay (spl. no. 54 C), Hirtshals; × 90. 9: Detail of the same specimen; × 225.
- Fig. 10. *Trifarina fluens* (Todd) 242
Specimen from zone 1 (16.25 m) of boring no. II, Sandnes; × 150.
- Fig. 11. *Bolivina pseudoplicata* Heron-Allen & Earland 243
A specimen from the Postglacial (spl. no. 24) of boring no. I, Løkken; × 160.
- Fig. 12. *Cassidulina laevigata* d’Orbigny 246
Detail of the aperture of a specimen from the Lateglacial (spl. no. 2) of boring no. I, Løkken; × 320.
- Fig. 13. *Islandiella teretis* (Tappan) 249
Detail of the aperture of a specimen from zone 1 (8.60 m) of boring no. II, Sandnes; × 350.

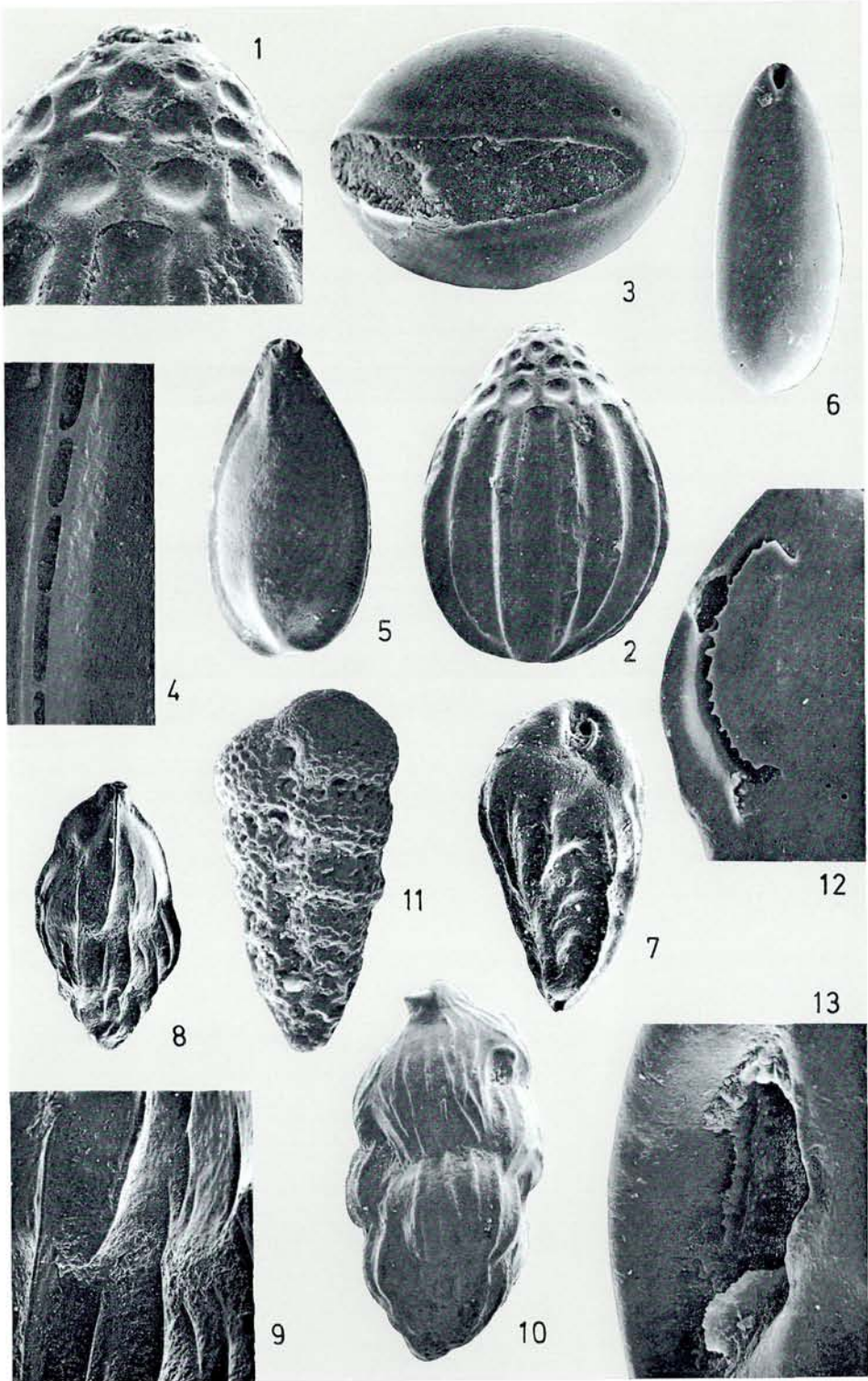


Plate 19

Discorbidae, Nonionidae, Elphidiidae.

- Fig. 1. *Buccella frigida* (Cushman) 253
Umbilical view of a specimen from zone 1 (12.40 m) of boring no. II, Sandnes; \times 150.
- Figs. 2–3. *Nonion umbilicatum* (Walker & Jacob) 263
2: Side view of a specimen from Older *Yoldia* Clay (spl. no. 10 A), Hirtshals; \times 180.
3: Detail of the same specimen; \times 450.
- Figs. 4–8. *Elphidium albiumbilicatum* (Weiss) 268
4–5: Side view and edge view of a specimen from the Postglacial (spl. no. 9) of boring no. II, Løkken; \times 90. 6: Detail of apertural face of the same specimen; \times 450. 7: Detail of the central part; \times 235. 8: Enlarged detail of figure 7; \times 950.

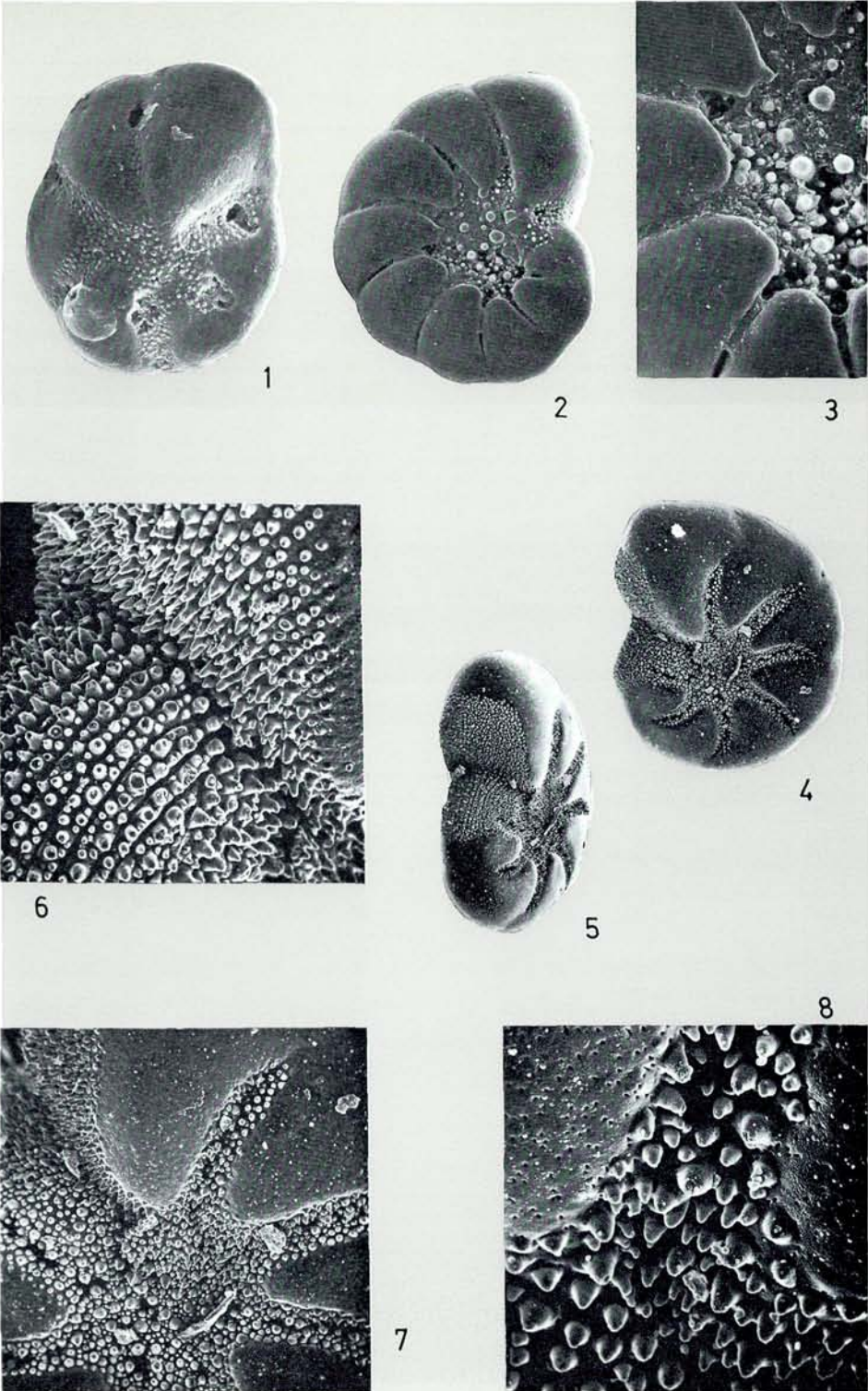
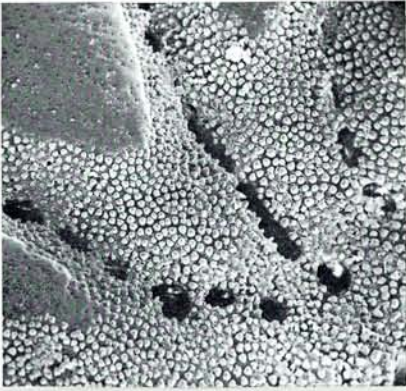


Plate 20

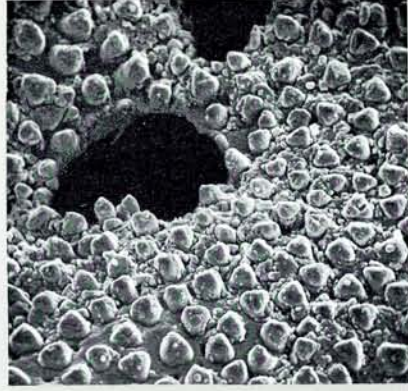
Elphidiidae.

Figs. 1–4. *Elphidium bartletti* Cushman 271
1–2: Apertural view and side view of a specimen from boring no. VI (20.0 m), Sandnes; × 45. 3: Detail of the center of the same specimen; × 225. 4: Detail of pores of the same specimen; × 900.

Figs. 5–8. *Elphidium clavatum* Cushman 273
5: Specimen from the Postglacial (spl. no. 17) of boring no. I, Løkken; × 135. 6: Detail of the same specimen; × 525. 7: Specimen from the Lateglacial (spl. no. 2) of boring no. III, Løkken; × 150. 8: Detail of the same specimen; × 375.



3



4



2



1

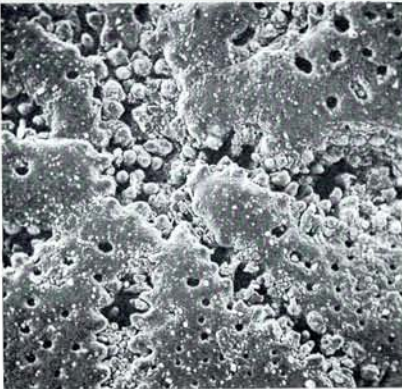


5



7

6



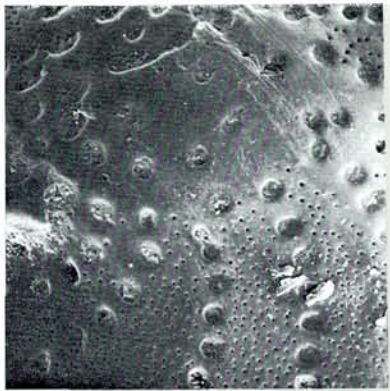
8



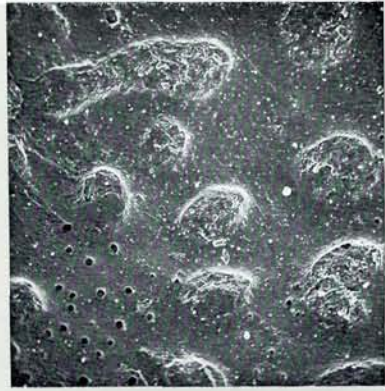
Plate 21

Elphidiidae.

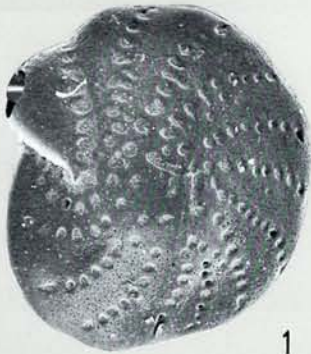
- Figs. 1–3. *Elphidium groenlandicum* Cushman 275
1: Specimen from Older *Yoldia* Clay (spl. no. 66 E), Hirtshals; × 60. 2: Detail of the same specimen; × 130. 3: Detail of the same specimen; × 300.
- Figs. 4–7. *Elphidium gunteri* Cole 277
4: Side view of a specimen from the Postglacial (spl. no. 15) of boring no. I, Løkken; × 100. 5: Apertural view of the same specimen; × 125. 6: Detail of the central area; × 560. 7: Detail of the aperture; × 450.
- Figs. 8–9. *Elphidium incertum* (Williamson) 277
8: Specimen from the Postglacial (spl. no. 17) of boring no. I, Løkken; × 60. 9: Detail of the sutures of the same specimen; × 290.



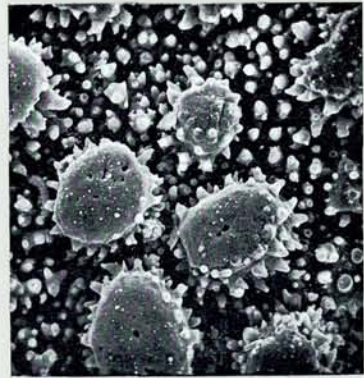
2



3



1



6



4



5



8



7



9

Plate 22

Elphidiidae.

Figs. 1–4. *Elphidium macellum* (Fichtel & Moll) 278
1–2: Specimen from the Postglacial (spl. no. 19) of boring no. I, Løkken; × 80.
3: Detail of the apertural face of the same specimen; × 390. 4: Detail of the sutures;
× 740.

Figs. 5–8. *Elphidium margaritaceum* Cushman 279
5–6: Specimen from the Postglacial (spl. no. 6) of boring no. II, Løkken; × 125.
7: Detail of the wall of the same specimen; × 900. 8: Detail of the last suture; × 450.

Fig. 9. *Elphidium subarcticum* Cushman 280
Specimen from Older *Yoldia* Clay (spl. no. 53 C), Hirtshals; × 55.

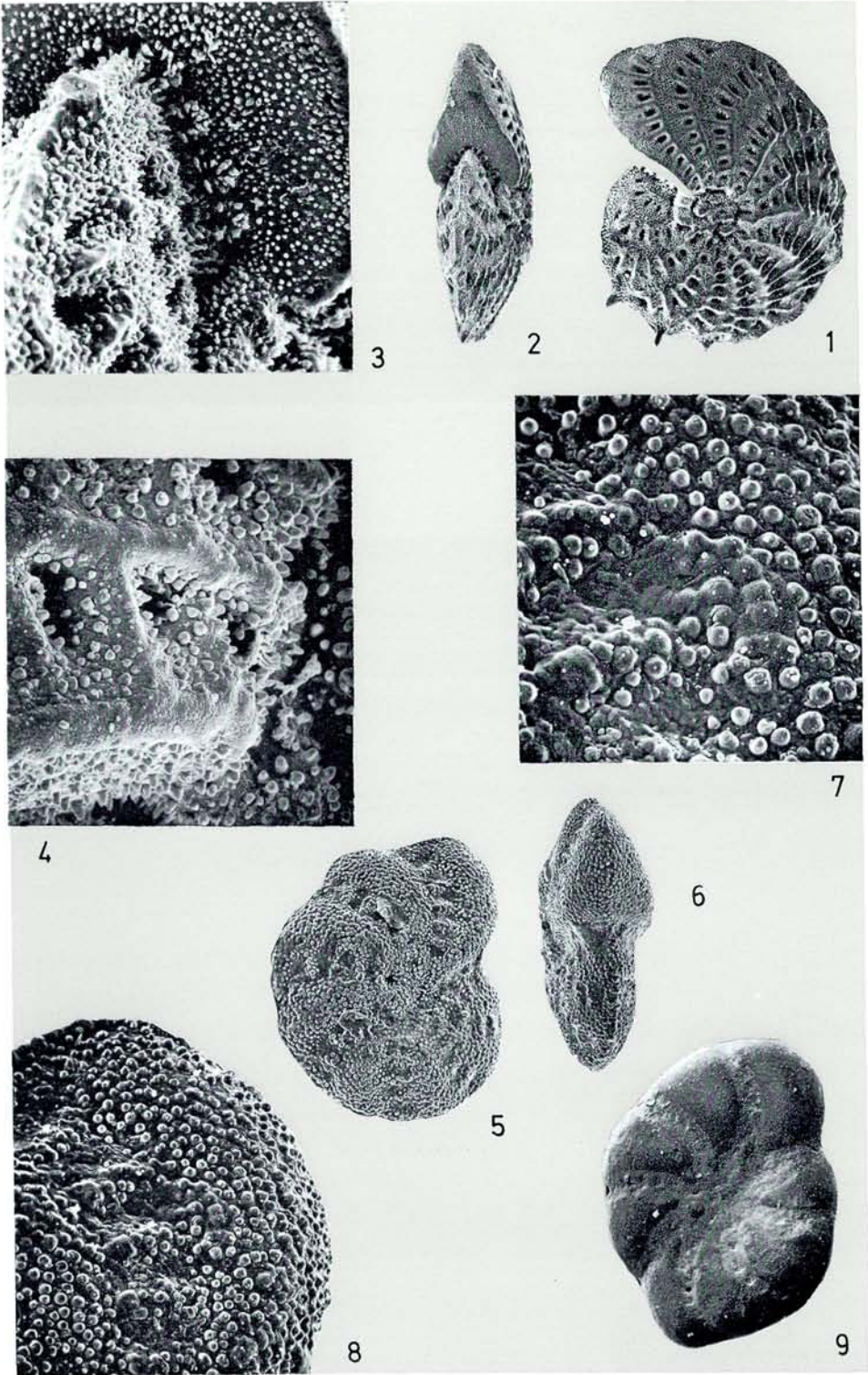


Plate 23

Elphidiidae.

- Figs. 1-4. *Elphidium umbilicatum* (Williamson) 281
1: Side view of specimen from the Postglacial (spl. no. 17) of boring no. I, Løkken; × 80. 2: Edge view of same specimen; × 85. 3: Detail of central area; × 240. 4: Detail of the aperture; × 250.
- Figs. 5-7. *Elphidium ustulatum* Todd 283
5: Edge view of a specimen from Older *Yoldia* Clay, Lundergaard mose, Vendsyssel; × 105. 6: Side view of same specimen; × 95. 7: Detail of a sutural pore; × 950.
- Figs. 8-11. *Cryptoelphidiella itriaensis* Feyling-Hanssen n. gen., n. sp. 285
8: Side view of a specimen from zone 3 (23.87 m) of boring no. II, Sadnes; × 140. 9: Edge view of the same specimen; × 135. 10: Detail of the central area; × 245. 11: Detail of the suture; × 600.

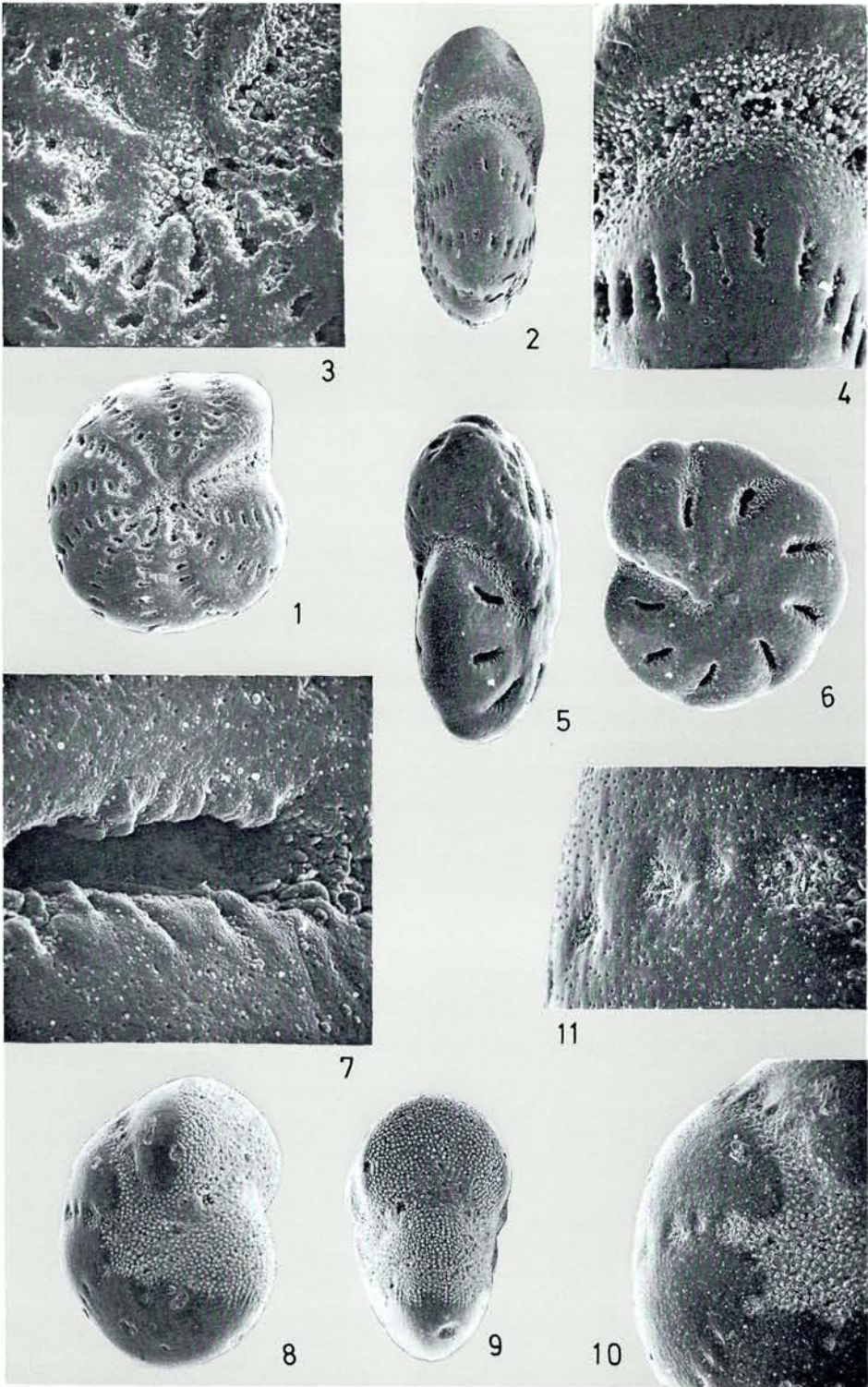


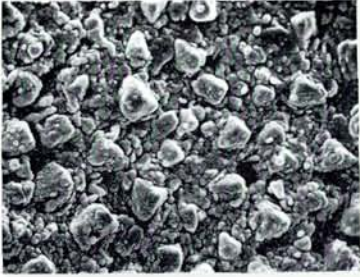
Plate 24

Elphidiidae, Rotaliidae.

Fig. 1. *Cryptoelphidiella itriaensis* Feyling-Hanssen n. gen., n. sp. 285
Detail of the central area of a specimen from zone 3 (23.87 m) of boring no. II, Sandnes; \times 1450.

Figs. 2–5. *Protelphidium anglicum* Murray 286
2: Side view of a specimen from the Postglacial (spl. no. 23) of boring no. I, Løkken; \times 130. 3: Apertural view of the same specimen; \times 290. 4: Detail of the center; \times 640. 5: Detail of the papillae; \times 3250.

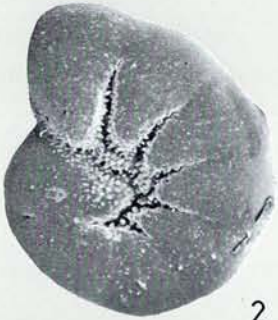
Figs. 6–8. *Protelphidium orbiculare* (Brady) 289
6: Side view of a specimen from Older *Yoldia* Clay at Løkkens Blånæse (profile G, spl. no. 2); \times 90. 7: Edge view of the same specimen; \times 80. 8: Detail of the central area; \times 340.



1



3



2



7



5



6

4



8

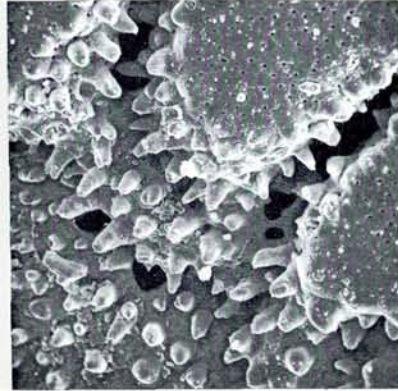


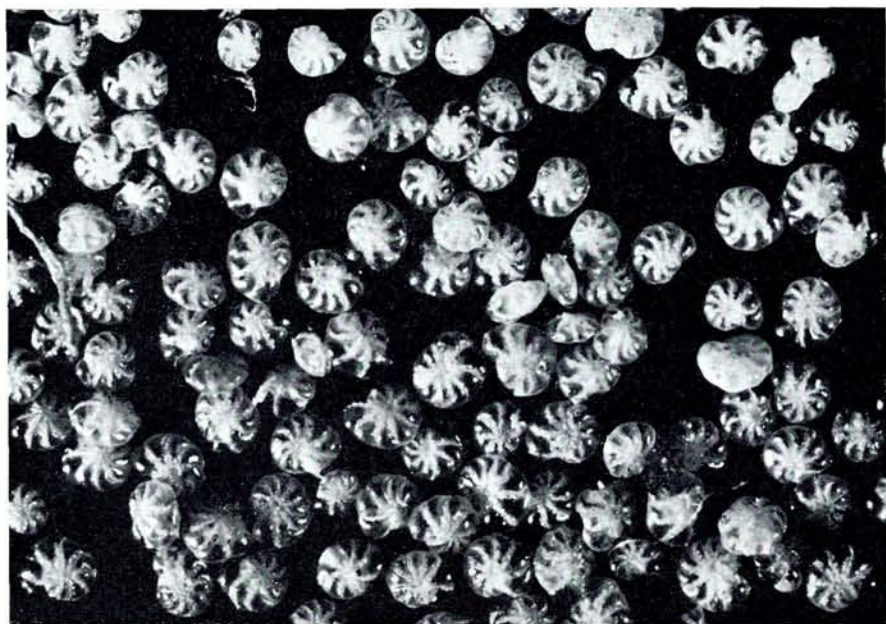
Plate 25

Fig. 1. Foraminiferal assemblage from the Postglacial at Birkelse, Vendsyssel; $\times 26$.

Fig. 2. Foraminiferal assemblage from the Lateglacial (Younger *Yoldia* Clay) at Nr. Lyngby, Vendsyssel; $\times 26$.



1



2

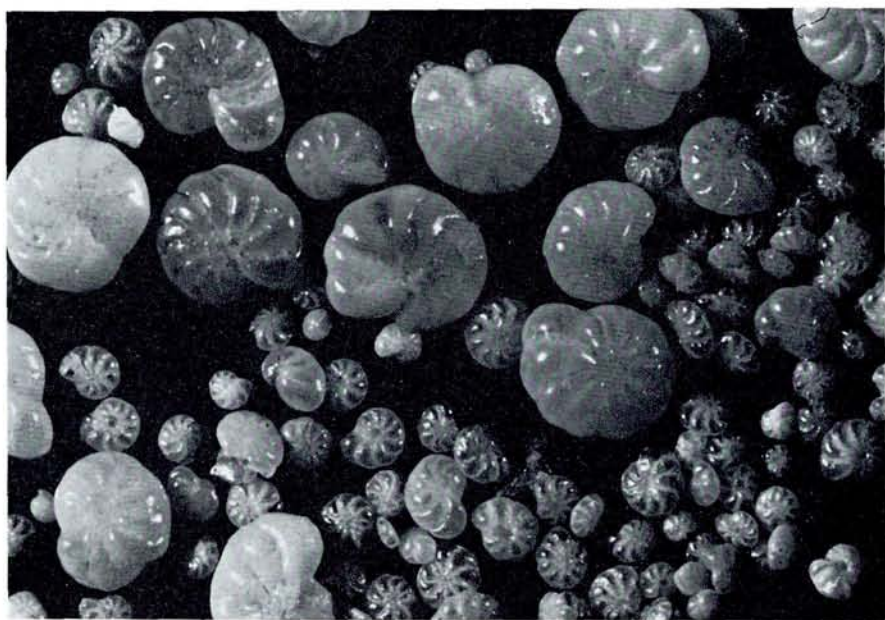
Plate 26

Fig. 1. Foraminiferal assemblage from the Older *Yoldia* Clay at Frederikshavn, Vendsyssel; $\times 26$.

Fig. 2. Foraminiferal assemblage from the Older *Yoldia* Clay at Stortorn, Vendsyssel; $\times 26$.



1



2

