

Sex differences in non-obstructive coronary artery disease

Nida Waheed¹, Suzette Elias-Smale², Waddah Malas³, Angela H. Maas², Tara L. Sedlak⁴, Jennifer Tremmel⁵, and Puja K. Mehta^{3*}

¹Department of Medicine, University of Florida, Gainesville, FL, USA; ²Department of Cardiology, Radboud University Medical Center, Nijmegen, Netherlands; ³Emory Women's Heart Center, Division of Cardiology, Department of Medicine, Emory University, 1462 Clifton Rd, Suite 505, Atlanta, GA 30329, USA; ⁴Leslie Diamond Women's Heart Center, University of British Columbia, Vancouver, British Columbia, Canada; and ⁵Division of Cardiovascular Medicine, Department of Medicine, Stanford University, Stanford, CA, USA

Received 16 July 2019; revised 3 December 2019; editorial decision 18 December 2019; Accepted 13 January 2020; online publish-ahead-of-print 20 January 2020

Ischaemic heart disease is a leading cause of morbidity and mortality in both women and men. Compared with men, symptomatic women who are suspected of having myocardial ischaemia are more likely to have no obstructive coronary artery disease (CAD) on coronary angiography. Coronary vasomotor disorders and coronary microvascular dysfunction (CMD) have been increasingly recognized as important contributors to angina and adverse outcomes in patients with no obstructive CAD. CMD from functional and structural abnormalities in the microvasculature is associated with adverse cardiac events and mortality in both sexes. Women may be particularly susceptible to vasomotor disorders and CMD due to unique factors such as inflammation, mental stress, autonomic, and neuroendocrine dysfunction, which predispose to endothelial dysfunction and CMD. CMD can be detected with coronary reactivity testing and non-invasive imaging modalities; however, it remains underdiagnosed. This review focuses on sex differences in presentation, pathophysiologic risk factors, diagnostic testing, and prognosis of CMD.

Keywords Coronary microvascular dysfunction • Angina • Women

This article is part of the **Spotlight Issue on Coronary Microvascular Dysfunction**.

1. Introduction

Cardiovascular disease (CVD) is a major cause of morbidity and mortality worldwide in both men and women, and ischaemic heart disease (IHD) accounts for the majority of these deaths.¹ The prevailing paradigm for diagnosis and treatment of IHD relies on identification of obstructive coronary artery disease (CAD) in symptomatic patients. However, approximately two-thirds of women and one-third of men with stable IHD have no obstructive CAD on angiography.^{2–7} No obstructive CAD is typically defined as <50% stenosis in any major epicardial coronary artery. Ischaemia with No Obstructive Coronary Arteries (INOCA) is associated with adverse cardiovascular outcomes despite absence of flow-limiting epicardial stenosis.^{8–12} Over the past two decades, it has become increasingly clear that a large proportion of INOCA subjects, who are predominantly women, have coronary vasomotor disorders or coronary microvascular dysfunction (CMD). In CMD, vascular dysregulation due to endothelium-dependent and/or endothelium-independent mechanisms leads to a higher microvascular resistance and reduced coronary blood flow. It is estimated that approximately half of patients with INOCA have CMD, a condition that is associated with adverse cardiac events. CMD remains underdiagnosed and undertreated,

partly because our diagnostic and therapeutic algorithms have focused on obstructive CAD detection and treatment (Figure 1).

Persistent and recurrent chest pain presentations in women is a major clinical problem that not only impacts prognosis but also contributes to anxiety from not having a clear diagnosis, impacts quality of life, and leads to elevated cardiovascular and estimated lifetime costs that rival that for obstructive CAD (Figure 2).¹³ Women are also more likely to present with myocardial infarction with no obstructive CAD (MINOCA).^{15,16} Data from >750 hospitals in the USA from 2007 to 2014 indicate that MINOCA occurs in 10.5% of women presenting with a myocardial infarction (MI) compared with 3.4% of men.¹⁷ Furthermore, it is more common in patients <55 years of age and in African Americans and is less likely to be associated with traditional CAD risk factors including dyslipidaemia, hypertension, and diabetes mellitus.¹⁸ In patients presenting with an ST-segment elevation MI (STEMI), 3.6% of women and 1.6% of men had MINOCA compared with 15% of women and 5.1% of men presenting with a non-STEMI.¹⁹ Mechanistic studies reveal that plaque disruption may be present in up to 38% of cases.²⁰ Other coronary causes of MINOCA besides CMD include coronary vasomotor disorders, non-atherogenic spontaneous coronary artery dissection,²¹ and coronary thrombi/emboli. It has been speculated that conditions of

* Corresponding author. Tel: 404-712-0281; fax: 404-727-6495, E-mail: pkmehta@emory.edu

INOCA and MINOCA are expressions of an 'atherosclerotic continuum'.²² Patients who have CAD (even if not obstructive) have worse outcomes compared with those with normal coronary arteries by angiography, and atherosclerotic burden is an important prognostic factor.^{6,23} This review focuses on sex differences in presentation, risk factors, pathophysiology, and prognosis of CMD.

2. Definition and prognosis

There has been some confusion in the literature regarding the definition of CMD. The combination of angina, electrocardiogram (ECG) changes, and no obstructive CAD was previously referred to in the literature as 'cardiac syndrome X', although this term is now considered outdated as it included heterogeneous groups who did not always have assessments of coronary flow reserve (CFR) or endothelial function.¹⁴ In order to clarify definitions and terminology, and advance international collaborative research, the International Coronary Vasomotor Study Group (COVADIS) has defined criteria for diagnosis of coronary vasomotor disorders and CMD.^{24,25}

Coronary vasomotor disorders, endothelial dysfunction, and CMD can be integrally assessed by invasive coronary reactivity testing (CRT), using vasoactive agents such as adenosine, acetylcholine, and nitroglycerine.^{26–28} A comprehensive CRT protocol involves using a Doppler flow wire or a thermodilution wire to assess the microvasculature. Doppler-derived measures of CFR and hyperaemic microvascular resistance are used to diagnose CMD.²⁹ Thermodilution technique is used to measure CFR and index of microcirculatory resistance (IMR), which is considered a more accurate measure of microvasculature, since CFR is influenced by epicardial disease³⁰ (Figure 3). CMD by the COVADIS criteria is defined as (i) symptoms suggestive of myocardial ischaemia, (ii) objective evidence of ischaemia, (iii) absence of obstructive CAD, and (iv) impaired CFR and/or evidence of coronary microvascular spasm, which is defined as reproduction of symptoms and ischaemic ECG changes, but no visible epicardial coronary spasm during acetylcholine testing.²⁴ Per COVADIS criteria, if there is reproduction of symptoms and ischaemic ECG shifts with transient total or subtotal coronary artery occlusion, then vasospastic angina due to epicardial vasospasm is diagnosed.²⁵ These definitions do have limitations in that often vasomotor disorders and CMD can present with no objective evidence of ischaemia on conventional stress testing, and clinicians should consider these in the differential diagnosis of patients with recurrent chest pain.

While there are no specific US guidelines on diagnosis and management of CMD, the European guidelines on stable IHD recommend testing for vasomotor disorders and CMD in symptomatic patients.³¹ In the WISE study, a CFR of <2.3 was prognostic of future cardiovascular events in women with INOCA.⁸ CMD is highly prevalent in both men and women,³² and a low CFR is associated with adverse cardiovascular outcomes in both sexes. Evidence from WISE suggests that women with CMD have an adverse prognosis, with a 2.5% per year rate of major adverse cardiovascular events (MACE) (hospitalization for acute coronary syndrome, heart failure, stroke, or cardiovascular death).¹⁰ Another study showed that women with severely decreased CFR (<1.2) were at a significantly increased risk of CVD events [hazard ratio (HR) 2.49, 95% confidence interval (CI) 1.16–5.38] compared with men.³³ Although CRT is considered safe and effective,²⁷ non-invasive imaging with echocardiography, positron emission tomography (PET), and cardiac magnetic resonance (CMR) can be used to diagnose CMD.^{31,34}

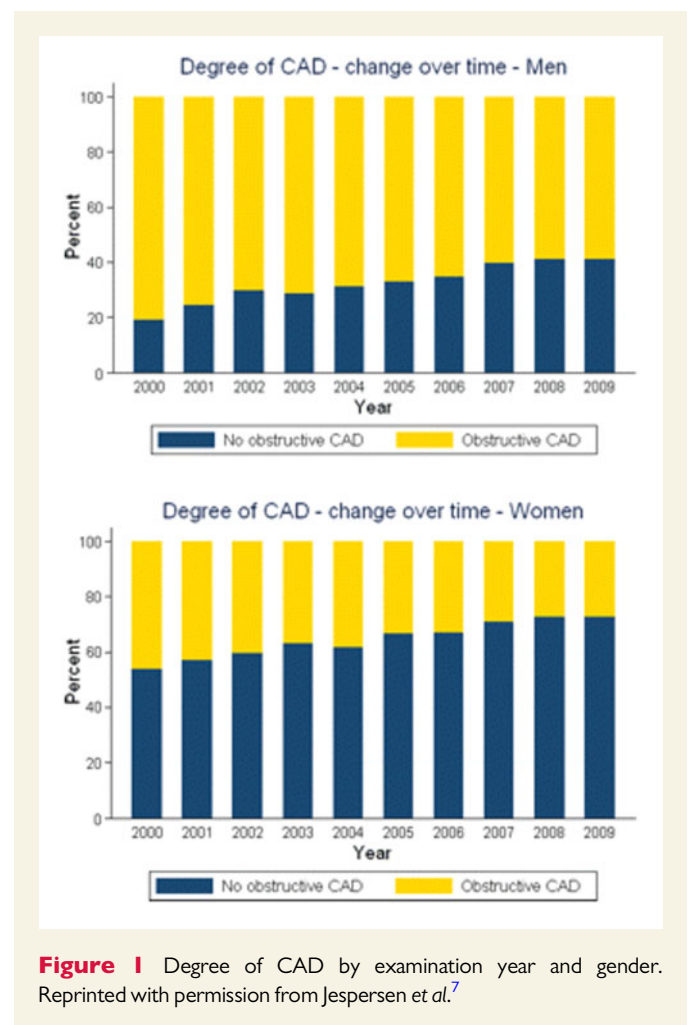
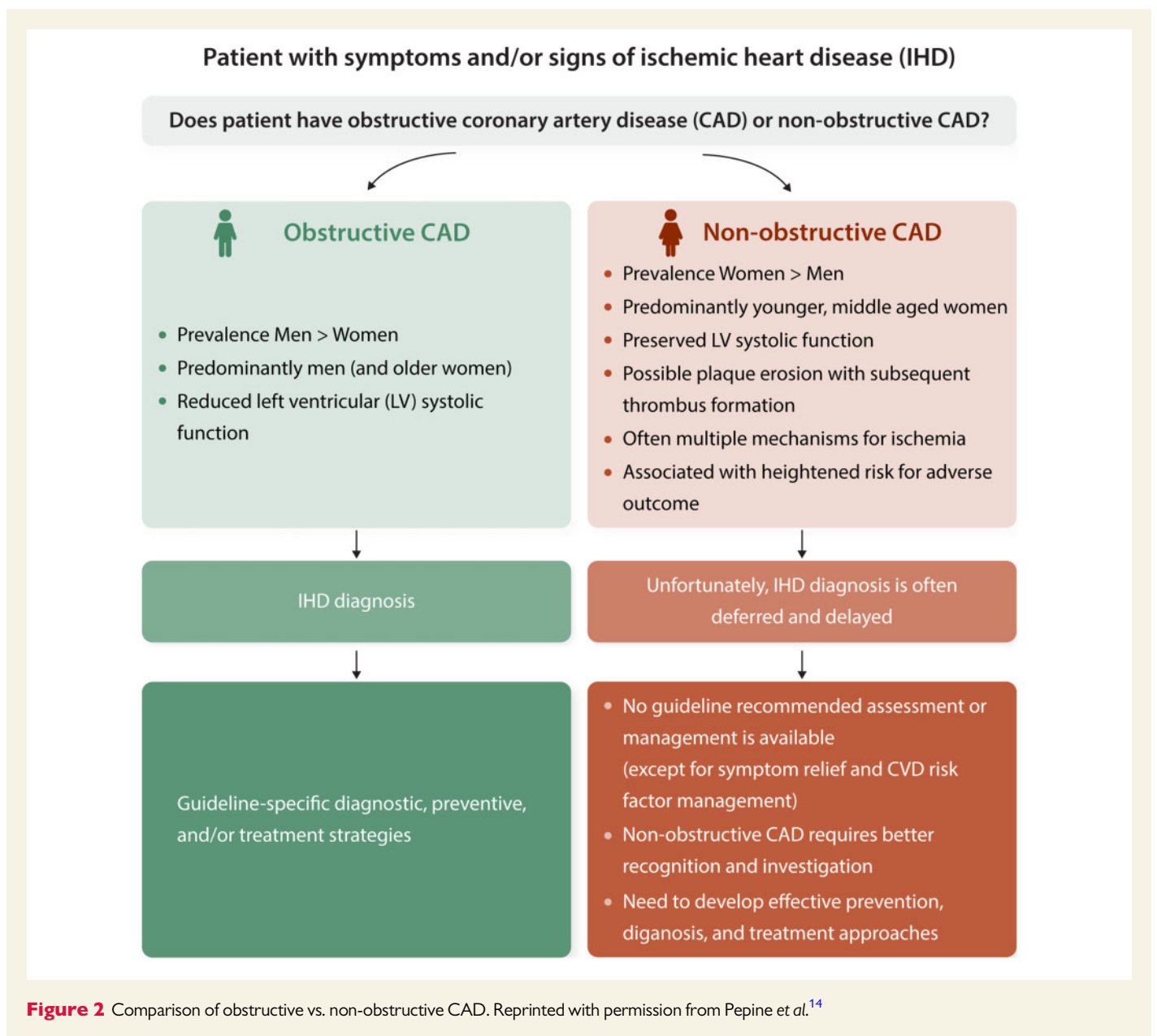


Figure 1 Degree of CAD by examination year and gender. Reprinted with permission from Jespersen et al.⁷

It is important to note that patients with significant CAD can also have CMD; sex differences in relationships between CMD and epicardial atherosclerosis are under investigation. In patients presenting with a STEMI, no sex differences in acute reperfusion injury have been found as measured by IMR or CFR.³⁵ IHD due to obstructive CAD usually is treated with anti-anginal, anti-atherosclerotic medications, and percutaneous coronary intervention, given clear guideline recommendations, but INOCA is undertreated. Furthermore, testing to detect vasomotor disorders or CMD in INOCA patients is not routinely done, and therefore, CMD remains underdiagnosed. Provocative testing may be underused due to concerns related to safety and adverse outcomes, but a systematic review including 9444 patients showed that major (0.8%) and minor (4.7%) complications from pharmacologic testing were low. Thus, provocative testing is not only effective but also safe and should be used for diagnosis when it is done at experienced centres.^{27,36,37} Usual care for patients with INOCA is not well-defined and rates of prescription use are low.^{7,38,39} An analysis of medication use for all patients ≥ 20 years with stable angina who underwent index coronary angiography in British Columbia, Canada, in 2008–2010 revealed that only 26% of patients with INOCA were prescribed anti-anginal medication (beta-blockers and/or calcium channel blockers) or endothelial modifying agents [angiotensin-converting enzyme (ACE) inhibitors/angiotensin receptor blockers (ARBs) and/or statins] within 90 days of angiography.⁴⁰ In the Cath-PCI registry of 1 489 745 patients undergoing coronary angiography in the

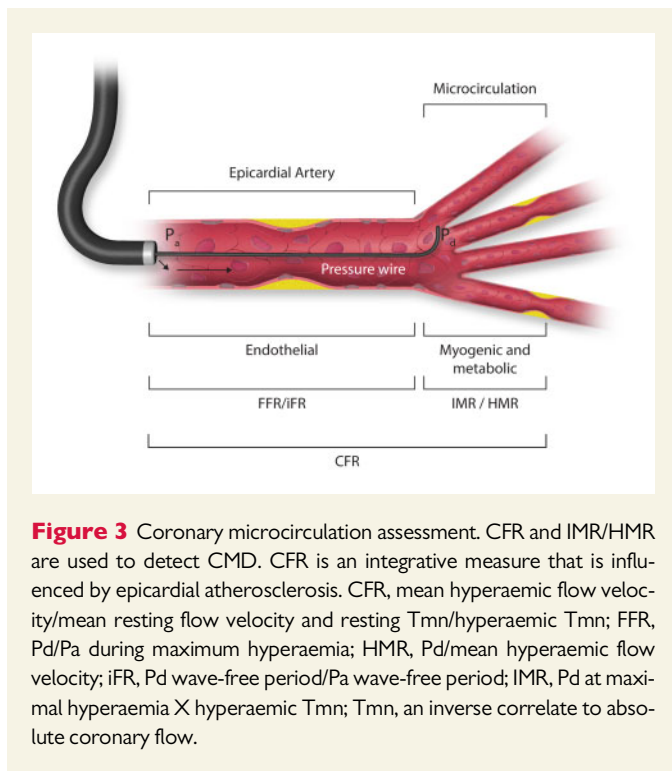


USA, 15.9% had no obstructive CAD. Compared to those with obstructive CAD, those with no obstructive CAD were less likely to receive secondary prevention therapies.⁴¹ The Women's Ischemia Trial to Reduce Events in Non-Obstructive CAD (WARRIOR) is an ongoing multi-site, randomized clinical trial of medical therapy vs. usual care in women with no obstructive CAD. The medical therapy arm includes intensive statin therapy (atorvastatin or rosuvastatin), in addition to ACE inhibitors/ARBs and aspirin.⁴²

3. Symptoms

Both men and women can present with typical and atypical symptoms of IHD, although women are more likely to present more with a variation in symptoms, such as shortness of breath, nausea, weakness, fatigue, and jaw pain.⁴³ For women, angina is often different in

location and milder in intensity, with more subtle, non-specific symptoms which can be commonly misdiagnosed. It should be noted that the labelling 'typical' angina fits best in obstructive CAD, whereas non-obstructive CAD and vasomotor disorders provokes more variable symptoms, often with a crescendo decrescendo pattern that may change over time. Effort-induced, retrosternal chest pain or discomfort, with or without dyspnoea, is also characteristic of CMD.²⁴ These symptoms can also present during hours after physical exercise. Extreme tiredness is a frequently occurring additional complaint that interferes with daily activities and work ability. The term 'microvascular angina' was coined to describe the clinical syndrome of angina or ischaemic symptoms in the absence of flow-limiting CAD.²⁴ Today, this term is commonly used to describe symptoms in patients with CMD. It should be noted that CMD patients seem to respond less dramatically to short-acting nitrates, whereas long-acting nitrates may aggravate symptoms due to a 'stealing' effect.



4. Sex differences in risk factors

4.1 Traditional risk factors

Traditional risk factors such as hypertension, hyperlipidaemia, and diabetes mellitus are associated with CMD, endothelial dysfunction, and progression of atherosclerosis.⁴⁴ Women typically have a greater burden of these risk factors, despite less obstructive CAD.^{45–47} While risk factor control is the cornerstone in CMD treatment, these factors are not always predictive of CMD. CMD may be one manifestation of a more generalized, systemic process that impacts the microvasculature in multiple organ systems leading to nephropathy, retinopathy, lacunar stroke, and so on.⁴⁸

In hypertension, remodelling of arterioles as well as capillary rarefaction contribute to a diminished CFR.^{44,49–51} Premenopausal women are at a higher risk of hypertension-induced end organ damage compared with age-matched men.⁵² During the menopause transition, blood pressure begins to rise and load-dependent changes as well as diastolic dysfunction begin to contribute to dyspnoea on exertion.^{53,54} Pathophysiologic links between CMD and future development of heart failure, and particularly heart failure with preserved ejection fraction (HFpEF), are under investigation.^{55–57} Dyslipidaemia has also been associated with decreased CFR, with an inverse relationship between CFR and low-density lipoproteins,^{58,59} whereas high levels of high-density lipoproteins and low levels of triglycerides were associated with improved resting microvascular blood flow.⁶⁰ Statins, as either monotherapy or in combination with other agents, have beneficial effects in patients with coronary endothelial dysfunction.^{61–63}

Among both type 1 and type 2 diabetics, there is similarly reduced myocardial blood flow ($161 \pm 18\%$ vs. $185 \pm 19\%$, respectively) compared with controls ($351 \pm 43\%$).⁶⁴ Diabetic women are found to have a lower CFR and impaired diastolic function compared with diabetic men.⁶⁵ A study of 462 patients with metabolic syndrome demonstrated

a lower CFR (2.5 ± 1.0) than those without metabolic syndrome (3.0 ± 0.9 , $P = 0.004$).⁶⁶ Bajaj et al.⁶⁷ followed 827 obese patients for 5.6 years to describe the role of obesity on CFR and adverse events. This study found that CFR decreased with increasing body mass index, and patients with impaired CFR had adverse CVD events, such as MI, heart failure, or death (5.7% vs. 2.6%; $P = 0.002$). Another study in 959 patients (70% female) showed an inverse relationship between CFR and metabolic impairment, and this was also associated with major adverse cardiac events.⁶⁸

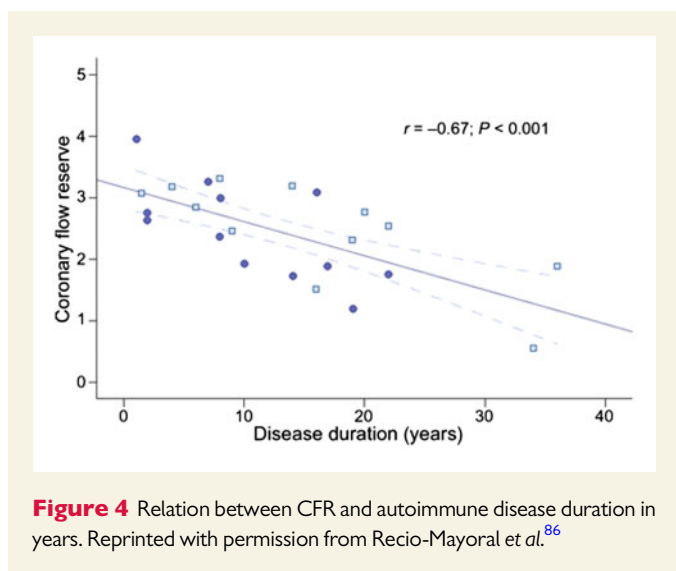
The role of physical activity has also been investigated in patients with CMD. Women with angina and non-obstructive CAD have been found to have markedly reduced exercise capacity compared with controls. In one study, peak VO_2 in patients with CMD was 17.3 vs. 27.3 mL/kg/min in controls ($P = 0.001$).⁶⁹ In four small randomized controlled trials of cardiac rehabilitation in patients with non-obstructive CAD and angina, completion of exercise training led to symptom benefit and increased exercise capacity, although data are limited to a small number of predominantly female patients.⁷⁰ Given the beneficial role of supervised exercise training on cardiac risk factors, improvement in angina, as well as cardiac morbidity and mortality,^{71–74} exercise is an important component in CMD management.

4.2 Unique sex-specific risk factors

In 2011, the American Heart Association published guidelines on prevention of heart disease in women that included adverse pregnancy outcomes (i.e. pre-eclampsia, eclampsia, pregnancy-induced hypertension, gestational diabetes) and autoimmune disorders [i.e. systemic lupus erythematosus (SLE), rheumatoid arthritis] as IHD risk factors.^{75,76} Current risk stratification tools such as the Framingham risk score, Reynolds risk score,⁷⁷ and atherosclerotic CVD pooled-cohorts risk assessment underestimate IHD risk in women due to their exclusion of risk factors unique to women.⁷⁸ Compared with Framingham risk score, the Reynold risk score provides a modestly better prediction among a diverse sample of US women.⁷⁹ Due to lack of current risk prediction models incorporating women-specific risk factors, clinicians should recognize the limitations of the risk scores.

4.2.1 Autoimmune/inflammatory disorders

Inflammation is a factor that contributes to CMD. Elevated high-sensitivity C-reactive protein has been associated with impaired CFR in CMD patients.^{80,81} In a retrospective study including 150 MINOCA patients, elevated C-reactive protein level at admission was an independent predictor for major adverse cardiac events (HR 1.47, 95% CI 1.06–2.07; $P = 0.005$).⁸² Moreover, the role of inflammation in the pathophysiology of coronary spasm has been rigorously demonstrated by ¹⁸F-labelled fluoro-2-deoxyglucose (¹⁸F-FDG) PET/CT in the ADIPO-VSA trial.⁸³ These findings are in keeping with significant cardiovascular events reduction yielded by targeted anti-inflammatory therapies, as by interleukin-1 β inhibition.⁸⁴ For chronic autoimmune inflammatory conditions, CMD is likely related to both endothelial dysfunction and inflammatory status and should be considered on the differential when women present with chest pain and no obstructive CAD.^{85,86} Patient with SLE, a chronic inflammatory disorder that disproportionately affects women, have increased rates of CMD compared with healthy controls.⁸⁷ In a case-control study, CFR (2.44 ± 0.78 vs. 3.87 ± 0.92 ; $P < 0.001$) was severely decreased in patients with SLE or rheumatoid arthritis in the absence of significant epicardial disease compared with controls.⁸⁶ Patients in this study were deemed to have low levels of disease activity, but still had



reduced CFR.^{85,88} Patients with SLE who have persistent chest pain and no obstructive CAD were also shown to have abnormal myocardial flow reserve by CMR imaging⁸⁹ (Figure 4).

Patients with ankylosing spondylitis, a condition more common in men,⁹⁰ also have significantly lower CFR than healthy controls (2.20 ± 0.46 vs. 3.02 ± 1.50 , $P < 0.0001$).⁹¹ Batko *et al.*⁹² demonstrated that time to peak hyperaemia was almost twice as long in patients with ankylosing spondylitis in comparison with healthy controls [9.4 s (6.8–12.5) vs. 5.2 s (3.8–6.1), $P = 0.001$]. With capillaroscopy, it was found that ankylosing spondylitis was associated with increased neo-angiogenesis and perivascular oedema. Both perivascular oedema and microvascular function improved after patients were treated with a tumour necrosis factor- α inhibitor for 3 months.

4.2.2 Adverse pregnancy outcomes

Pregnancy-related complications, such as hypertensive pregnancy disorders and gestational diabetes, have been associated with premature endothelial dysfunction and CVD risk. In several meta-analyses, it was found that pre-eclampsia, occurring in 3–5% of all pregnancies, has the highest risk with a more than two-fold increased risk for IHD.^{93,94} Levels of inflammatory markers often remain elevated even decades after index pregnancies and at least 30% of women show signs of premature subclinical atherosclerosis.^{95–97} In large population-based studies recurrent miscarriages (≥ 2) have also been linked to a higher CVD risk and genetic involvement.^{98,99} Women with a history of pre-eclampsia have a higher risk of developing diabetes (HR 1.82, 95% CI 1.26–2.62) compared with women with no history of pre-eclampsia after adjusting for age, primigravida, and gestational diabetes.¹⁰⁰ It has been shown that women with a history of pre-eclampsia have impaired brachial artery flow-mediated dilation immediately postpartum¹⁰¹ as well as 15–25 years from the index event.¹⁰² The obstetric history is therefore crucial to optimize risk prediction and to start timely prevention in middle-aged women.

4.2.3 Polycystic ovarian syndrome

Women with polycystic ovarian syndrome (PCOS) are at increased risk for developing diabetes, dyslipidaemia, metabolic syndrome, and hypertension.^{103–105} Insulin resistance and hyperandrogenism lead to more than four-fold increased risk of diabetes in women with PCOS and

subsequent endothelial dysfunction.^{106–108} Multiple studies have indicated that women with PCOS have endothelial abnormalities.^{109–111} A case–control study found that skin microvascular perfusion was decreased in response to acetylcholine in patients with PCOS compared with healthy controls.¹¹² However, there is conflicting evidence as to whether peripheral measurements of skin blood flow are related to CMD in patients with PCOS.^{113,114}

Usselman *et al.*¹¹⁵ investigated whether hyperandrogenism was related to endothelin-B receptor-mediated microvascular endothelial dysfunction in women with PCOS, independent of the effects of insulin resistance and obesity. This study demonstrated a reduced vasodilatory response to endothelin-1 in lean women with androgen excess PCOS (AE-PCOS) compared with lean controls (0.59 ± 0.08 nM vs. 0.49 ± 0.09 , $P < 0.05$), but not compared with obese AE-PCOS women, indicating that obesity does not worsen the effects of PCOS on the microvasculature. In both lean and obese women with PCOS, administering ethinyl oestradiol increased endothelin-1-mediated vasodilatation (0.29 ± 0.21 nM, 0.47 ± 0.09 nM) for lean and obese PCOS women, respectively by improving the impaired endothelin-B receptor signalling and nitric oxide availability.

4.2.4 Sex hormones and menopause

Sex steroid hormones are increasingly acknowledged as being relevant to immune response and vascular inflammation, having an importantly different impact on women and men throughout their lifetime.^{116–118} Whereas in adulthood men tend to have a higher inflammatory predisposition than women, the opposite accounts for women after menopause.^{119,120} Physiological levels of oestradiol (E2) are generally protective against inflammation. However, they also have paradoxically pro-inflammatory roles under different circumstances, depending on timing in the disease process and reproductive status.¹²¹ Reduced oestrogen levels after menopause are associated with altered vascular function, enhanced inflammation and up-regulation of other systems such as the renin–angiotensin system and the sympathetic nervous system.¹²²

Cardiovascular risk factors such as diabetes, hypertension, and hyperlipidaemia increase after menopause, and women who present with CMD are more likely to be mid-life women, who also have high plaque burden on intravascular ultrasound (IVUS).¹²³ With declining oestrogen levels, an altered ratio of testosterone/oestrogen may be contributing to the pathogenesis of vascular dysfunction and increased CVD risk. Oestrogen has beneficial effects on the vasculature as shown in basic science and observational studies. Transdermal oestrogen improved coronary reactivity in women with angina and no obstructive CAD,¹²⁴ and 17- β -oestradiol in women decreased coronary vasoconstriction in the non-stenotic segments in women with CAD.¹²⁵ However, in the Women's Health Initiative, which tested oestrogen with progestin vs. placebo, hormone therapy was associated with adverse outcomes.¹²⁶ Current recommendations by the North American Menopause Society recommend that if hormone therapy is needed, it should be used for the shortest duration and for treatment of menopausal symptoms only and not for primary CVD prevention.

4.2.5 Psychological risk factors and mental stress

Psychological risk factors such as depression and anxiety are highly prevalent in women with INOCA and may contribute to abnormal vascular reactivity, predominantly through autonomic dysfunction and inflammation.¹²⁷ CMD may be a contributor to mental stress-associated adverse outcomes since myocardial ischaemia from mental stress is independent

of CAD severity. Mental stress has been associated with coronary endothelial dysfunction, and women may be more susceptible to mental stress.¹²⁸ Vaccarino et al.¹²⁹ reported a sex difference in mental stress-induced myocardial ischaemia (MSIMI) in younger women (≤ 50 years old) with a history of MI compared with age-matched men. These women had a higher summed difference score (SDS) on perfusion imaging (3.1 in women vs. 1.5 in men, $P = 0.029$) and had twice the rate of MSIMI (SDS ≥ 3 ; 52% vs. 25%). It also appears that women and men have distinct cardiovascular reactivity mechanisms for MSIMI. Sullivan et al.¹³⁰ showed that women with MSIMI have a proclivity towards vasoconstriction-induced MSIMI, whereas men with MSIMI is driven by supply-demand mismatch due to increased haemodynamic workload. A study of 53 middle-age male twin pairs (106 twins) assessed the relationship between depression and CFR using PET imaging.¹³¹ No difference in myocardial ischaemia between twins with and without depression was observed. However, among dizygotic twin pairs, CFR was 14% lower in twins with depression than in their brothers without depression (2.36 vs. 2.74, $P < 0.03$). This relationship suggests there may be a shared genetic pathway between depression and microvascular dysfunction.

Women are more susceptible to stress-induced myocardial ischaemia and takotsubo syndrome after a significant emotional or physical stressor.^{132,133} CMD has been implicated in the pathogenesis of takotsubo syndrome in multiple studies.^{134–136} In a prospective study of women with a history of stress-induced cardiomyopathy, 228 cases were evaluated for coronary epicardial and microvascular responses to acetylcholine, nitroglycerine, and adenosine. The median increase in peak coronary blood flow (CBF) in women with stress-induced cardiomyopathy receiving acetylcholine was 13.1% [interquartile range (IQR) -18.6 to 55] compared with 103% (IQR 75–149) in the control group.¹³⁴

4.3 Non-invasive diagnostic techniques for CMD

Stress echocardiography, Doppler echocardiography, cardiac PET, and cardiac magnetic resonance imaging (MRI) can be used to diagnose CMD. Single-photon emission computed tomography (SPECT) does not provide CFR, but an abnormal SPECT in a patient with no obstructive CAD may indicate endothelial dysfunction or CMD. In a study of 59 postmenopausal women, 21 showed perfusion defects by SPECT imaging and were more likely to exhibit endothelial dysfunction (57% vs. 29%) than those without perfusion defects.¹³⁷ Cardiac PET is able to quantify myocardial blood flow and CFR, and thus is a preferred method for the evaluation of CMD.¹³⁸ Recently, PET was used to compare sex differences in the frequency and severity of CMD. This study showed that the frequency of CFR < 2.0 , which was used as the diagnostic threshold for CMD, was similar in both men ($n = 206$, 51%) and women ($n = 435$, 54%).³² PET-derived CFR has been shown to be highly reproducible,¹³⁹ and this study highlighted its utility for diagnosing CMD as part of routine clinical practice.

CMR imaging can also be used to assess CMD using semi-quantitative myocardial perfusion reserve index; as software processing improves and availability of CMR increases, this may be a preferred test in women due to lack of radiation exposure and its ability to identify oedema, fibrosis, and scar.^{140–143} Liu et al.¹⁴⁴ evaluated whether CMR could be used to diagnose CMD in patients with angina. The optimal myocardial perfusion index threshold was found to be 1.4 among patients with obstructive CAD and this threshold was shown to also accurately detect inducible ischaemia due to CMD [area under the curve (AUC) 0.90, 95% CI 0.80–

0.96; $P < 0.0001$], with a specificity of 95% (95% CI 82–99%), and a sensitivity of 89% (95% CI 78–98%).

4.4 Invasive techniques

Intravenous infusion of adenosine and intracoronary injections of acetylcholine and nitroglycerine allow assessment of microvascular and macrovascular, endothelium- and non-endothelium-dependent pathways.

4.4.1 Endothelium-dependent mechanisms

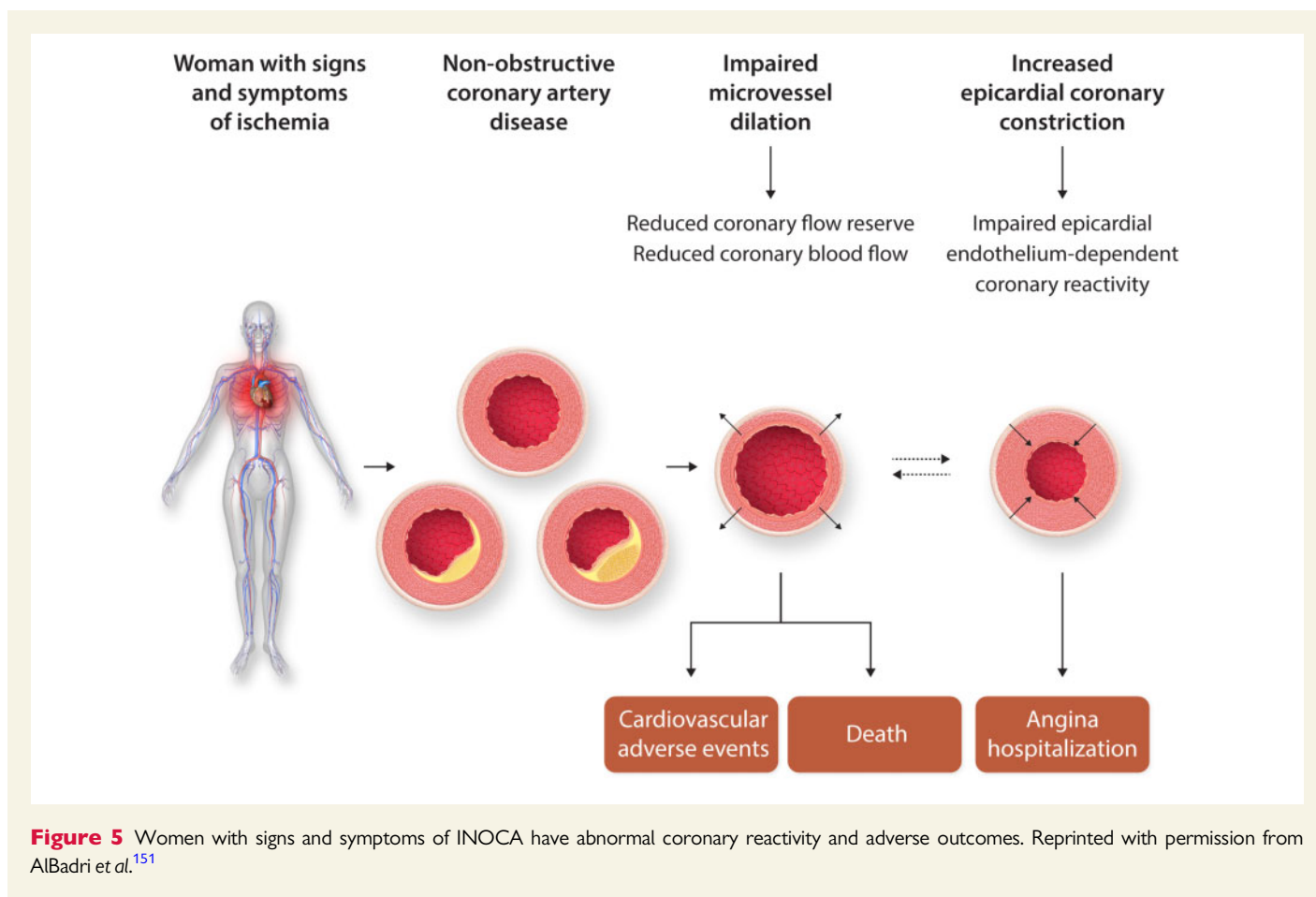
Endothelium-dependent microvascular function is commonly assessed by acetylcholine. Normal coronary endothelial function results in an approximately three- to four-fold increase in coronary blood flow in response to acetylcholine. An abnormal response would be an attenuated increase, no change, or a decrease in CBF after intracoronary acetylcholine administration.¹⁴⁵ After acetylcholine infusion, vessels with intact endothelium vasodilate, whereas dysfunctional vessels or disrupted endothelium will result in vasoconstriction due to activation of muscarinic receptors on vascular smooth muscle cells.¹⁴⁶ Change in coronary blood flow in response to acetylcholine can be calculated to detect CMD.

4.4.2 Endothelium-independent mechanisms

Adenosine tests for endothelium-independent microvascular function. Endothelium-independent microvascular function is associated with structural vascular alterations and changes in smooth muscle cells.¹⁴⁷ Nitroglycerine directly acts on vascular smooth muscle. It results in an endothelium-independent evaluation of the coronary epicardial arteries as the coronary microvasculature lacks the enzyme needed to convert nitroglycerine to its active form, nitric oxide. Therefore, nitroglycerine administration produces dilation of coronary vessels greater than 0.2 mm in diameter and has no effect on smaller coronary vessels.¹⁴⁵ Adenosine stimulates the adenosine A₂ receptor on smooth muscle cells and primarily acts on vessels less than 0.15 mm in diameter.¹⁴⁸ It therefore mainly assesses changes in coronary microvasculature resistance defined as CMD, with a CFR of < 2.0 or 2.5 or IMR ≥ 25 , depending on the methodology and cut-off used.^{8,24,30,149}

4.4.3 Sex differences in coronary vasomotor disorders by invasive testing

Various studies have investigated sex differences in invasive CRT. Sara et al.¹⁵⁰ studied 1498 patients presenting with chest pain and non-obstructive CAD (34.9% males, mean age 51.1 years). This study evaluated impaired CFR (≤ 2.5) and coronary vascular dysfunction defined as either microvascular dysfunction (maximal percentage increase in coronary blood flow in response to acetylcholine of $\leq 50\%$) or epicardial dysfunction (a decrease in coronary artery diameter of $\geq 20\%$ in response to acetylcholine). Two-thirds of all patients had coronary vascular dysfunction and women were more prevalent in both the microvascular dysfunction and epicardial dysfunction groups. In a multivariable analysis, age was the only variable that independently predicted abnormal microvascular function, but female sex was associated with abnormal microvascular function, with an odds ratio of 1.21 (95% CI 0.98–1.40) compared with men. A recent study followed 224 women over a median of 9.7 years and showed that low CFR was a predictor of MACE (HR 1.06, 95% CI 1.01–1.12; $P = 0.02$) and low CBF was associated with both increased mortality (HR 1.12, 95% CI 1.01–1.24; $P = 0.04$) and MACE (HR 1.11, 95% CI 1.03–1.20; $P = 0.006$)¹⁵¹ (Figure 5).



Aziz *et al.*¹⁵² evaluated 1379 patients with stable angina and non-obstructive CAD (42% males, mean age 62 years) and found that a pathological acetylcholine test is more common in women compared with men (70% vs. 43%; $P < 0.001$). A pathological test was either defined as having reproducible symptoms, ischaemic ECG changes, and diffuse or focal vasoconstriction of an epicardial vessel of $\geq 75\%$ or reproduction of symptoms, ischaemic ECG shift, but no criteria for epicardial vasospasm (CMD). In a multivariable logistic regression model, the sex difference was significant with a female to male odds ratio for CMD and epicardial vasospasm of 4.2 (95% CI 3.1–5.5; $P < 0.001$) and 2.3 (95% CI 1.7–3.1; $P < 0.001$), respectively. Women were more sensitive to acetylcholine with vasomotor dysfunction occurring at lower doses compared with men. Patients with effort-related symptoms and a mix of effort and resting symptoms were more likely to have CMD than epicardial vasospasm. In this study, a total of 763 patients (55%) had undergone a non-invasive stress test before vasomotor testing. Non-invasive stress tests consisted of SPECT with pharmacologic stress, cardiac stress MRI, exercise stress echocardiography, and exercise ergometry. Of the 763 tests, 210 (27.5%) were abnormal. There was no association between an abnormal non-invasive stress test and an overall positive acetylcholine test, for either CMD or epicardial vasospasm.¹⁵² Sara *et al.*¹⁵⁰ also did not find a correlation between invasive vasomotor test results and non-invasive ischaemia detection.

In a study of 718 patients (mean age 56.3 years, 49.7% males) with angina-equivalent symptoms and no CAD, 60% had coronary vasomotor dysfunction. A total of 33% had CMD, 20% had epicardial vasospasm (defined as a luminal narrowing of $\geq 50\%$ with reproduction of

symptoms) and 7% had a combination of both. Patients with CMD were more likely to be women (39.3% vs. 25.5%; $P < 0.001$) and have effort-related symptoms. Patients with epicardial vasospasm were more likely to be men with angina at rest.¹⁵³

In a study of 139 patients (77% women) with angina and no obstructive CAD who underwent comprehensive CRT and IVUS, coronary vascular abnormalities were found in 77% of the patients. Endothelial dysfunction (defined as a decrease in coronary diameter of $>20\%$ after acetylcholine) was present in 44%, while 21% had an abnormal IMR of ≥ 25 . A myocardial bridge (MB) was present in 58% of patients.¹⁴⁹ A subsequent study showed that IMR was similar between women and men (20.7 ± 9.8 vs. 19.1 ± 8.0 ; $P = 0.45$), but CFR was lower in women (3.8 ± 1.6 vs. 4.8 ± 1.9 ; $P = 0.004$).³⁷ Baseline characteristics were similar, except women were more likely to have hypertension and a history of early-onset CAD. Compared with men, women in this study had a shorter mean transit time, suggesting increased resting coronary flow, while there were no sex differences in hyperaemic transit time.³⁷ Recently, it has been shown that CMD (diagnosed by PET-derived CFR) is highly prevalent in both men and women,³² and associated with adverse outcomes in both groups. When CMD is diagnosed or there is high clinical suspicion of this condition appropriate treatment of cardiovascular risk factors, as well as anti-anginal, anti-atherosclerotic, and anti-ischaemic medications can be initiated.

4.4.4 Sex differences in coronary vasomotor disorders

In a retrospective Japanese analysis of 1670 consecutive patients undergoing acetylcholine provocation testing for epicardial vasospasm (defined

Table 1 Anatomical and haemodynamic characteristics of myocardial bridging by sex, assessed using IVUS and diastolic FFR during dobutamine stress

Characteristics	Women (n = 101)	Men (n = 53)	P-value
Halo thickness (mm)	0.48 (0.17–2.2)	0.58 (0.14–2.32)	0.001
MB length (mm)	20.3 (3.0–59.7)	25.8 (6.57–68.9)	0.002
MB muscle index	10.2 (1.6–56.9)	16.7 (0.92–72.2)	<0.001
Arterial compression (%)	28.6 (8–58.6)	36.7 (16.7–57)	<0.001
Number of septal branches within the MB segment	2 (0–7)	3 (1–7)	0.008
Proximal MPB (%)	26.9 (13.5–56.5)	44 (10–72)	<0.001
Distance of MPB from the proximal entrance of the MB (mm)	22.7 (3.4–57.5)	20.9 (7.1–55.2)	0.79
dFFR during dobutamine stress	0.70 (0.24–0.90)	0.63 (0.20–0.86)	0.02

Variable are expressed as median (minimum and maximum values).

MB muscle index, MB length \times halo thickness; MB, myocardial bridge; MPB, maximum plaque burden.

as $\geq 90\%$ constriction in one coronary segment or $>75\%$ in two adjacent coronary segments), 50% of patients had a positive test of which 56% males. Of the patients with a positive test, 59% had focal spasm, whereas 41% had diffuse spasm, most likely multivessel spasm. There was a clear sex difference between the type of spasm with a predominance of women (60%) in the group having diffuse spasm and a minority (33%) women in the group with focal spasm. The patients with diffuse spasm had less coronary risk factors than those with focal spasm, and diffuse spasm was not likely to be accompanied by significant coronary epicardial stenosis. Therefore, this pattern might be the consequence of endothelial dysfunction rather than coronary atherosclerosis.¹⁵⁴

In a study comparing intracoronary acetylcholine- and ergonovine-provoked spasm (221 patients, 72% males, mean age 64.4 years), acetylcholine provoked spasm (defined as transient luminal narrowing $>99\%$ and usual chest pain or ischaemic ECG findings) in 96.7% of female patients, while ergonovine provoked spasm in only 32.8% of female patients. In male patients, spasm was provoked in 80.6% by acetylcholine and in 60.6% by ergonovine. Thus, acetylcholine is more sensitive than ergonovine as a spasm provocation test, especially in women.¹⁵⁵

Various studies on sex-related differences in results of invasive coronary vasomotor function tests indicate that women have more CMD and epicardial vasospasm compared with men. Furthermore, women are more likely to have diffuse spasm as opposed to focal spasm and are more sensitive to acetylcholine than ergonovine. Irrespective of sex, results of invasive vasomotor testing do not seem to correlate well with those of non-invasive ischaemia detection tests.

4.4.5 Sex differences in myocardial bridging

Myocardial bridging should also be considered in patients with persistent angina and no obstructive CAD.¹⁴⁹ The overall prevalence of an MB varies greatly, depending on the cohort studied and the type of imaging test performed.¹⁵⁶ Some studies have reported a higher prevalence of MBs in men than women,¹⁵⁷ while others have shown no sex difference in prevalence.^{158,159} In a study of 154 patients with angina and an MB undergoing invasive assessment with intravascular ultrasound and diastolic fractional flow reserve (dFFR) during dobutamine stress,¹⁶⁰ there were several sex differences in the anatomical characteristics of MBs (Table 1). However, these anatomical differences did not translate into sex differences in haemodynamic significance, with no difference found between women and men in dFFR or Doppler flow velocity during stress. This would suggest that haemodynamic testing, rather than relying solely on anatomical characteristics, is important in both women and men.

4.5 Abnormal cardiac nociception

A subgroup of patients with CMD, particularly women, demonstrate significant and persistent chest pain that is out of proportion to objective evidence of ischaemia. They may have a cardiac nociceptive abnormality and enhanced pain perception from a variety of stimuli. Cannon *et al.*¹⁶¹ showed that 29 of 36 patients (81%) with no CAD had provoked chest pain with right ventricular catheter manipulation, right-sided pacing, and injection of intracoronary contrast. In contrast, only 6% of symptomatic patients with CAD experienced chest pain with these tests. Other studies have also described abnormal, heightened pain perception in patients with persistent chest pain, especially in women with non-obstructive CAD.^{162–164} Further research is needed to elucidate whether this heightened pain sensitivity is due to abnormal cardiac nerve function or problems with central pain processing.^{165–167}

Tricyclic medications, such as amitriptyline and imipramine, have been effective in treating some patients with chest pain and normal coronary arteries.^{168–171} Non-pharmacological treatments for patients with persistent chest pain include cognitive behavioural therapy,¹⁷² transcutaneous electrical nerve stimulation,¹⁷³ spinal cord stimulation,¹⁷⁴ and transcendental meditation.¹⁷⁵

5. Conclusion

CMD is associated with an adverse cardiovascular prognosis in both women and men with INOCA. Risk factors for CMD are similar to those for obstructive CAD, including hypertension, hyperlipidaemia, and diabetes but unique risk factors in women such as pregnancy-related disorders, autoimmune dysfunction, chronic inflammation, and psychological risk factors contribute to CMD. Large-scale clinical trials are required to evaluate candidate therapies for CMD and expand therapeutic options for this challenging condition that impacts not only quality of life, healthcare costs but also cardiovascular mortality.

Conflict of interest: none declared.

References

1. Benjamin EJ, Blaha MJ, Chiuve SE, Cushman M, Das SR, Deo R, de Ferranti SD, Floyd J, Fornage M, Gillespie C, Isasi CR, Jiménez MC, Jordan LC, Judd SE, Lackland D, Lichtman JH, Lisabeth L, Liu S, Longenecker CT, Mackey RH, Matsushita K, Mozaffarian D, Mussolino ME, Nasir K, Neumar RW, Palaniappan L, Pandey DK, Thiagarajan RR, Reeves MJ, Ritchey M, Rodriguez CJ, Roth GA, Rosamond WD, Sasson C, Towfighi A, Tsao CW, Turner MB, Virani SS, Voeks JH, Willey JZ, Wilkins JT, Wu JH, Alger HM, Wong SS, Muntner P; American Heart Association

- Statistics Committee and Stroke Statistics Subcommittee. Heart disease and stroke statistics-2017 update: a report from the American Heart Association. *Circulation* 2017;**135**:e146–e603.
2. Kaski JC, Collins P, Nihoyannopoulos P, Maseri A, Poole-Wilson PA, Rosano G. Cardiac syndrome X: clinical characteristics and left ventricular function. *J Am Coll Cardiol* 1995;**25**:807–814.
 3. Reis SE, Holubkov R, Smith AJC, Kelsey SF, Sharaf BL, Reichel N, Rogers WJ, Merz CNB, Sopko G, Pepine CJ. Coronary microvascular dysfunction is highly prevalent in women with chest pain in the absence of coronary artery disease: results from the NHLBI WISE study. *Am Heart J* 2001;**141**:735–741.
 4. Diver DJ, Bier JD, Ferreira PE, Sharaf BL, McCabe C, Thompson B, Chaitman B, Williams DO, Braunwald E. Clinical and arteriographic characterization of patients with unstable angina without critical coronary arterial narrowing (from the TIMI-III Trial). *Am J Cardiol* 1994;**74**:531–537.
 5. Sedlak TL, Lee M, Izadnegahdar M, Merz CNB, Gao M, Humphries KH. Sex differences in clinical outcomes in patients with stable angina and no obstructive coronary artery disease. *Am Heart J* 2013;**166**:38–44.
 6. Maddox TM, Stanislawski MA, Grunwald GK, Bradley SM, Ho PM, Tsai TT, Patel MR, Sandhu A, Valle J, Magid DJ, Leon B, Bhatt DL, Fihn SD, Rumsfeld JS. Nonobstructive coronary artery disease and risk of myocardial infarction. *JAMA* 2014;**312**:1754.
 7. Jespersen L, Hvelplund A, Abildstrom SZ, Pedersen F, Galatius S, Madsen JK, Jorgensen E, Kelbaek H, Prescott E. Stable angina pectoris with no obstructive coronary artery disease is associated with increased risks of major adverse cardiovascular events. *Eur Heart J* 2012;**33**:734–744.
 8. Pepine CJ, Anderson RD, Sharaf BL, Reis SE, Smith KM, Handberg EM, Johnson BD, Sopko G, Bairey Merz CN. Coronary microvascular reactivity to adenosine predicts adverse outcome in women evaluated for suspected ischemia. *J Am Coll Cardiol* 2010;**55**:2825–2832.
 9. von Mering GO, Arant CB, Wessel TR, McGorray SP, Bairey Merz CN, Sharaf BL, Smith KM, Olson MB, Johnson BD, Sopko G, Handberg E, Pepine CJ, Kerensky RA. Abnormal coronary vasomotion as a prognostic indicator of cardiovascular events in women. *Circulation* 2004;**109**:722–725.
 10. Gulati M, Cooper-DeHoff RM, McClure C, Johnson BD, Shaw LJ, Handberg EM, Zineh I, Kelsey SF, Arnsdorf MF, Black HR, Pepine CJ, Merz CNB. Adverse cardiovascular outcomes in women with nonobstructive coronary artery disease: a report from the Women's Ischemia Syndrome Evaluation Study and the St James Women Take Heart Project. *Arch Intern Med* 2009;**169**:843–850.
 11. Bairey Merz CN, Pepine CJ, Walsh MN, Fleg JL, Camici PG, Chilian WM, Clayton JA, Cooper LS, Crea F, Di Carli M, Douglas PS, Galis ZS, Gurbel P, Handberg EM, Hasan A, Hill JA, Hochman JS, Iturrigala E, Kirby R, Levine GN, Libby P, Lima J, Mehta P, Desvigne-Nickens P, Olive M, Pearson GD, Quyyumi AA, Reynolds H, Robinson B, Sopko G, Taqueti V, Wei J, Wenger N. Ischemia and no obstructive coronary artery disease (INOCA): developing evidence-based therapies and research agenda for the next decade. *Circulation* 2017;**135**:1075–1092.
 12. Suwaidi JA, Hamasaki S, Higano ST, Nishimura RA, Holmes DR, Lerman A. Long-term follow-up of patients with mild coronary artery disease and endothelial dysfunction. *Circulation* 2000;**101**:948–954.
 13. Shaw LJ, Merz CNB, Pepine CJ, Reis SE, Bittner V, Kip KE, Kelsey SF, Olson M, Johnson BD, Mankad S, Sharaf BL, Rogers WJ, Pohost GM, Sopko G. The economic burden of angina in women with suspected ischemic heart disease: results from the National Institutes of Health-National Heart, Lung, and Blood Institute-Sponsored Women's Ischemia Syndrome Evaluation. *Circulation* 2006;**114**:894–904.
 14. Pepine CJ, Ferdinand KC, Shaw LJ, Light-McGroarty KA, Shah RU, Gulati M, Duvernoy C, Walsh MN, Bairey Merz CN. Emergence of nonobstructive coronary artery disease: a woman's problem and need for change in definition on angiography. *J Am Coll Cardiol* 2015;**66**:1918–1933.
 15. Tamis-Holland JE, Jneid H, Reynolds HR, Agewall S, Brilakis ES, Brown TM, Lerman A, Cushman M, Kumbhani DJ, Arslanian-Engoren C, Bolger AF, Beltrame JF, American Heart Association Interventional Cardiovascular Care Committee of the Council on Clinical Cardiology; Council on Cardiovascular and Stroke Nursing; Council on Epidemiology and Prevention; and Council on Quality of Care and Outcomes Research. Contemporary diagnosis and management of patients with myocardial infarction in the absence of obstructive coronary artery disease: a scientific statement from the American Heart Association. *Circulation* 2019;**139**:e891–e908.
 16. Agewall S, Beltrame JF, Reynolds HR, Niessner A, Rosano G, Caforio AL, De Caterina R, Zimarino M, Roffi M, Roffi M, Kjeldsen K, Atar D, Kaski JC, Sechtem U, Torvall P, WG on Cardiovascular Pharmacotherapy. ESC working group position paper on myocardial infarction with non-obstructive coronary arteries. *Eur Heart J* 2017;**38**:143–153.
 17. Mahajan AM, Gandhi H, Smilowitz NR, Roe MT, Hellkamp AS, Chiswell K, Gulati M, Reynolds HR. Seasonal and circadian patterns of myocardial infarction by coronary artery disease status and sex in the ACTION Registry-GWTG. *Int J Cardiol* 2019;**274**:16–20.
 18. Safdar B, Spatz ES, Dreyer RP, Beltrame JF, Lichtman JH, Spertus JA, Reynolds HR, Geda M, Bueno H, Dziura JD, Krumholz HM, D'Onofrio G. Presentation, clinical profile, and prognosis of young patients with myocardial infarction with nonobstructive coronary arteries (MINOCA): results from the VIRGO study. *J Am Heart Assoc* 2018;**7**:doi:10.1161/JAHA.118.009174.
 19. Smilowitz NR, Mahajan AM, Roe MT, Hellkamp AS, Chiswell K, Gulati M, Reynolds HR. Mortality of myocardial infarction by sex, age, and obstructive coronary artery disease status in the ACTION registry—GWTG (Acute Coronary Treatment and Intervention Outcomes Network Registry—Get With the Guidelines). *Circ Cardiovasc Qual Outcomes* 2017;**10**:e003443.
 20. Reynolds HR, Srichai MB, Iqbal SN, Slater JN, Mancini GBJ, Feit F, Pena-Sing I, Axel L, Attubato MJ, Yatskar L, Kalhorn RT, Wood DA, Lobach IV, Hochman JS. Mechanisms of myocardial infarction in women without angiographically obstructive coronary artery disease. *Circulation* 2011;**124**:1414–1425.
 21. Thygesen K, Alpert JS, Jaffe AS, Chaitman BR, Bax JJ, Morrow DA, White HD; ESC Scientific Document Group. Fourth universal definition of myocardial infarction (2018). *Eur Heart J* 2019;**40**:237–269.
 22. Ciliberti G, Guerra F, Coiro S, Capucci A. Is there an 'atherosclerotic continuum' from angina with unobstructed coronary arteries to MINOCA? *Eur Heart J* 2019;**40**:1987–1987.
 23. Sharaf B, Wood T, Shaw L, Johnson BD, Kelsey S, Anderson RD, Pepine CJ, Bairey Merz CN. Adverse outcomes among women presenting with signs and symptoms of ischemia and no obstructive coronary artery disease: findings from the National Heart, Lung, and Blood Institute-sponsored Women's Ischemia Syndrome Evaluation (WISE) angiographic core laboratory. *Am Heart J* 2013;**166**:134–141.
 24. Ong P, Camici PG, Beltrame JF, Crea F, Shimokawa H, Sechtem U, Kaski JC, Bairey Merz CN. International standardization of diagnostic criteria for microvascular angina. *Int J Cardiol* 2018;**250**:16–20.
 25. Beltrame JF, Crea F, Kaski JC, Ogawa H, Ong P, Sechtem U, Shimokawa H, Bairey Merz CN; Coronary Vasomotion Disorders International Study Group (COVADIS). International standardization of diagnostic criteria for vasospastic angina. *Eur Heart J* 2017;**38**:2565–2568.
 26. Ong P, Athanasiadis A, Hill S, Schäufele T, Mahrholdt H, Sechtem U. Coronary microvascular dysfunction assessed by intracoronary acetylcholine provocation testing is a frequent cause of ischemia and angina in patients with exercise-induced electrocardiographic changes and unobstructed coronary arteries. *Clin Cardiol* 2014;**37**:462–467.
 27. Wei J, Mehta PK, Johnson BD, Samuels B, Kar S, Anderson RD, Azarbal B, Petersen J, Sharaf B, Handberg E, Shufelt C, Kothawade K, Sopko G, Lerman A, Shaw L, Kelsey SF, Pepine CJ, Merz CNB. Safety of coronary reactivity testing in women with no obstructive coronary artery disease: results from the NHLBI-sponsored WISE (Women's Ischemia Syndrome Evaluation) study. *JACC Cardiovasc Interv* 2012;**5**:646–653.
 28. Prasad A, Higano ST, Al Suwaidi J, Holmes DR, Mathew V, Pumper G, Lennon RJ, Lerman A. Abnormal coronary microvascular endothelial function in humans with asymptomatic left ventricular dysfunction. *Am Heart J* 2003;**146**:549–554.
 29. Garcia D, Harbaoui B, van de Hoef TP, Meuwissen M, Nijjer SS, Echavarría-Pinto M, Davies JE, Piek JJ, Lantelme P. Relationship between FFR, CFR and coronary microvascular resistance - Practical implications for FFR-guided percutaneous coronary intervention. *PLoS One* 2019;**14**:e0208612.
 30. Ng MKC, Yeung AC, Fearon WF. Invasive assessment of the coronary microcirculation: superior reproducibility and less hemodynamic dependence of index of microcirculatory resistance compared with coronary flow reserve. *Circulation* 2006;**113**:2054–2061.
 31. Task Force Members, Montalescot G, Sechtem U, Achenbach S, Andreotti F, Arden C, Budaj A, Bugiardini R, Crea F, Cuisset T, Di Mario C, Ferreira JR, Gersh BJ, Gitt AK, Hulot JS, Marx N, Opie LH, Pfisterer M, Prescott E, Ruschitzka F, Sabaté M, Senior R, Taggart DP, van der Wall EE, Vrints CJ; ESC Committee for Practice Guidelines, Zamorano JL, Achenbach S, Baumgartner H, Bax JJ, Bueno H, Dean V, Deaton C, Eril C, Fagard R, Ferrari R, Hasdai D, Hoes AW, Kirchhof P, Knuuti J, Kolh P, Lancellotti P, Linhart A, Nihoyannopoulos P, Piepoli MF, Ponikowski P, Sirnes PA, Tamargo JL, Tendera M, Torbicki A, Wijns W, Windecker S; Document Reviewers, Knuuti J, Valgimigli M, Bueno H, Claeys MJ, Donner-Banzhoff N, Eril C, Frank H, Funck-Brentano C, Gaemperli O, Gonzalez-Juanatey JR, Hamilos M, Hasdai D, Husted S, James SK, Kervinen K, Kolh P, Kristensen SD, Lancellotti P, Maggioni AP, Piepoli MF, Pries AR, Romeo F, Rydén L, Simoons ML, Sirnes PA, Steg PG, Timmis A, Wijns W, Windecker S, Yildirim A, Zamorano JL. ESC guidelines on the management of stable coronary artery disease: the Task Force on the management of stable coronary artery disease of the European Society of Cardiology. *Eur Heart J* 2013;**34**:2949–3003.
 32. Murthy VL, Naya M, Taqueti VR, Foster CR, Gaber M, Hainer J, Dorbala S, Blankstein R, Rimoldi O, Camici PG, Di Carli MF. Effects of sex on coronary microvascular dysfunction and cardiac outcomes. *Circulation* 2014;**129**:2518–2527.
 33. Taqueti VR, Shaw LJ, Cook NR, Murthy VL, Shah NR, Foster CR, Hainer J, Blankstein R, Dorbala S, Di Carli MF. Excess cardiovascular risk in women relative to men referred for coronary angiography is associated with severely impaired coronary flow reserve, not obstructive disease. *Circulation* 2017;**135**:566–577.
 34. Marinescu MA, Löffler AI, Ouellette M, Smith L, Kramer CM, Bourque JM. Coronary microvascular dysfunction, microvascular angina, and treatment strategies. *JACC Cardiovasc Imaging* 2015;**8**:210–220.
 35. Maznyczka AM, Carrick D, Carberry J, Mangion K, McEntegart M, Petrie MC, Eteiba H, Lindsay M, Hood S, Watkins S, Davie A, Mahrous A, Ford I, Welsh P, Sattar N, Oldroyd KG, Berry C. Sex-based associations with microvascular injury and outcomes after ST-segment elevation myocardial infarction. *Open Hear* 2019;**6**:e000979.

36. Ciliberti G, Seshasai SRK, Ambrosio G, Kaski JC. Safety of intracoronary provocative testing for the diagnosis of coronary artery spasm. *Int J Cardiol* 2017;**244**:77–83.
37. Kobayashi Y, Fearon WF, Honda Y, Tanaka S, Pargaonkar V, Fitzgerald PJ, Lee DP, Stefanik M, Yeung AC, Tremmel JA. Effect of sex differences on invasive measures of coronary microvascular dysfunction in patients with angina in the absence of obstructive coronary artery disease. *JACC Cardiovasc Interv* 2015;**8**:1433–1441.
38. Rossini R, Capodanno D, Lettieri C, Musumeci G, Limbruno U, Molfese M, Spataro V, Calabria P, Romano M, Tarantini G, Gavazzi A, Angiolillo DJ. Long-term outcomes of patients with acute coronary syndrome and nonobstructive coronary artery disease. *Am J Cardiol* 2013;**112**:150–155.
39. Johnston N, Schenck-Gustafsson K, Lagerqvist B. Are we using cardiovascular medications and coronary angiography appropriately in men and women with chest pain? *Eur Heart J* 2011;**32**:1331–1336.
40. Galway S, Adatia F, Grubisic M, Lee M, Daniele P, Humphries KH, Sedlak TL. Sex differences in cardiac medication use post-catheterization in patients undergoing coronary angiography for stable angina with nonobstructive coronary artery disease. *J Women's Health* 2017;**26**:976–983.
41. Maddox TM, Ho P, Michael Roe M, Dai D, Tsai TT, Rumsfeld JS. Utilization of secondary prevention therapies in patients with nonobstructive coronary artery disease identified during cardiac catheterization: insights from the National Cardiovascular Data Registry Cath-PCI Registry. *Circ Cardiovasc Qual Outcomes* 2010;**3**:632–641.
42. Women's Ischemia A TRIal to Reduce Events In Non-ObstruCTive CAD (WARRIOR). <https://clinicaltrials.gov/ct2/show/NCT03417388> (5 June 2019, date last accessed).
43. Mieres JH, Heller GV, Hendel RC, Gulati M, Boden WE, Katten D, Shaw LJ. Signs and symptoms of suspected myocardial ischemia in women: results from the What is the Optimal Method for Ischemia Evaluation in Women? Trial. *J Womens Health (Larchmt)* 2011;**20**:1261–1268.
44. Dean J, Dela CS, Mehta PK, Merz C. Coronary microvascular dysfunction: sex-specific risk, diagnosis, and therapy. *Nat Rev Cardiol* 2015;**12**:406–414.
45. Prescott E, Hippe M, Schnohr P, Hein HO, Vestbo J. Smoking and risk of myocardial infarction in women and men: longitudinal population study. *BMJ* 1998;**316**:1043–1047.
46. Huxley R, Barzi F, Woodward M. Excess risk of fatal coronary heart disease associated with diabetes in men and women: meta-analysis of 37 prospective cohort studies. *BMJ* 2006;**332**:73–78.
47. Kalyani RR, Lazo M, Ouyang P, Turkbey E, Chevalier K, Brancati F, Becker D, Vaidya D. Sex differences in diabetes and risk of incident coronary artery disease in healthy young and middle-aged adults. *Diabetes Care* 2014;**37**:830–838.
48. Berry C, Sidik N, Pereira AC, Ford TJ, Touyz RM, Kaski J-C, Hainsworth AH. Small-vessel disease in the heart and brain: current knowledge, unmet therapeutic need, and future directions. *J Am Heart Assoc* 2019;**8**:e011104.
49. Antonios T, Singer DRJ, Markandu ND, Mortimer PS, MacGregor GA. Structural skin capillary rarefaction in essential hypertension. *Hypertension* 1999;**33**:998–1001.
50. Bosch AJ, Harazny JM, Kistner I, Friedrich S, Wojtkiewicz J, Schmieder RE. Retinal capillary rarefaction in patients with untreated mild-moderate hypertension. *BMC Cardiovasc Disord* 2017;**17**:300.
51. Antonios T, Kaski J, Hasan K, Brown S, Singer DR. Rarefaction of skin capillaries in patients with anginal chest pain and normal coronary arteriograms. *Eur Heart J* 2001;**22**:1144–1148.
52. Palatini P, Mos L, Santonastaso M, Saladini F, Benetti E, Mormino P, Bortolazzi A, Cozzio S. Premenopausal women have increased risk of hypertensive target organ damage compared with men of similar age. *J Womens Health (Larchmt)* 2011;**20**:1175–1181.
53. Maas A, Franke HR. Women's health in menopause with a focus on hypertension. *Neth Heart J* 2009;**17**:68–72.
54. Merz AA, Cheng S. Sex differences in cardiovascular ageing. *Heart* 2016;**102**:825–831.
55. Wei J, Nelson MD, Sharif B, Shufelt C, Bairey Merz CN. Why do we care about coronary microvascular dysfunction and heart failure with preserved ejection fraction: addressing knowledge gaps for evidence-based guidelines. *Eur Heart J* 2018;**39**:3451–3453.
56. Marti CN, Gheorghide M, Kalogeropoulos AP, Georgiopoulou VV, Quyyumi AA, Butler J. Endothelial dysfunction, arterial stiffness, and heart failure. *J Am Coll Cardiol* 2012;**60**:1455–1469.
57. Crea F, Bairey Merz CN, Beltrame JF, Kaski JC, Ogawa H, Ong P, Sechtem U, Shimokawa H, Camici PG. Coronary Vasomotion Disorders International Study Group (COVADIS). The parallel tales of microvascular angina and heart failure with preserved ejection fraction: a paradigm shift. *Eur Heart J* 2017;**38**:473–477.
58. Galderisi M, Desimone G, Cicala S, Parisi M, Derrico A, Innelli P, Dedivitiis M, Mondillo S, Dedivitiis O. Coronary flow reserve in hypertensive patients with hypercholesterolemia and without coronary heart disease. *Am J Hypertens* 2007;**20**:177–183.
59. Kaufmann PA, Gnecci-Ruscone T, Schäfers KP, Lüscher TF, Camici PG. Low density lipoprotein cholesterol and coronary microvascular dysfunction in hypercholesterolemia. *J Am Coll Cardiol* 2000;**36**:103–109.
60. Duvernoy CS, Meyer C, Seifert-Klaus V, Dayanikli F, Matsunari I, Rattenhuber J, Höss C, Graeff H, Schwaiger M. Gender differences in myocardial blood flow dynamics: lipid profile and hemodynamic effects. *J Am Coll Cardiol* 1999;**33**:463–470.
61. Caliskan M, Erdogan D, Gullu H, Topcu S, Ciftci O, Yildirim A, Muderrisoglu H. Effects of atorvastatin on coronary flow reserve in patients with slow coronary flow. *Clin Cardiol* 2007;**30**:475–479.
62. Zhang X, Li Q, Zhao J, Li X, Sun X, Yang H, Wu Z, Yang J. Effects of combination of statin and calcium channel blocker in patients with cardiac syndrome X. *Coron Artery Dis* 2014;**25**:40–44.
63. Ridker PM, MacFadyen J, Libby P, Glynn RJ. Relation of baseline high-sensitivity C-reactive protein level to cardiovascular outcomes with rosuvastatin in the Justification for Use of statins in Prevention: an Intervention Trial Evaluating Rosuvastatin (JUPITER). *Am J Cardiol* 2010;**106**:204–209.
64. Di Carli MF, Janisse J, Ager J, Grunberger G. Role of chronic hyperglycemia in the pathogenesis of coronary microvascular dysfunction in diabetes. *J Am Coll Cardiol* 2003;**41**:1387–1393.
65. Haas AV, Rosner BA, Kwong RY, Rao AD, Garg R, Di Carli MF, Adler GK. Sex differences in coronary microvascular function in individuals with type 2 diabetes. *Diabetes* 2019;**68**:631–636.
66. Di Carli MF, Charytan D, McMahon GT, Ganz P, Dorbala S, Schelbert HR. Coronary circulatory function in patients with the metabolic syndrome. *J Nucl Med* 2011;**52**:1369–1377.
67. Bajaj NS, Osborne MT, Gupta A, Tavakkoli A, Bravo PE, Vita T, Bibbo CF, Hainer J, Dorbala S, Blankstein R, Bhatt DL, Di Carli MF, Taqueti VR. Coronary microvascular dysfunction and cardiovascular risk in obese patients. *J Am Coll Cardiol* 2018;**72**:707–717.
68. Osborne MT, Bajaj NS, Taqueti VR, Gupta A, Bravo PE, Hainer J, Bibbo CF, Dorbala S, Blankstein R, Di Carli MF. Coronary microvascular dysfunction identifies patients at high risk of adverse events across cardiometabolic diseases. *J Am Coll Cardiol* 2017;**70**:2835–2837.
69. Bechsgaard DF, Hove JD, Suhrs HE, Bové KB, Shahriari P, Gustafsson I, Prescott E. Women with coronary microvascular dysfunction and no obstructive coronary artery disease have reduced exercise capacity. *Int J Cardiol* 2019;**293**:1–9.
70. Kissel CK, Nikolettou D. Cardiac rehabilitation and exercise prescription in symptomatic patients with non-obstructive coronary artery disease—a systematic review. *Curr Treat Options Cardiovasc Med* 2018;**20**:78.
71. Anderson L, Oldridge N, Thompson DR, Zwisler A-D, Rees K, Martin N, Taylor RS. Exercise-based cardiac rehabilitation for coronary heart disease: cochrane systematic review and meta-analysis. *J Am Coll Cardiol* 2016;**67**:1–12.
72. Balducci S, Zanuso S, Nicolucci A, et al. Effect of an intensive exercise intervention strategy on modifiable cardiovascular risk factors in subjects with type 2 diabetes mellitus: a randomized controlled trial: the Italian Diabetes and Exercise Study (IDES). *Arch Intern Med* 2010;**170**:1794–1803.
73. Dunlay SM, Pack QR, Thomas RJ, Killian JM, Roger VL. Participation in cardiac rehabilitation, readmissions, and death after acute myocardial infarction. *Am J Med* 2014;**127**:538–546.
74. Gitt A, Jannowitz C, Karoff M, Karmann B, Horack M, Völler H. Treatment patterns and risk factor control in patients with and without metabolic syndrome in cardiac rehabilitation. *Vasc Health Risk Manag* 2012;**8**:265–274.
75. Mosca L, Benjamin EJ, Berra K, Bezanson JL, Dolor RJ, Lloyd-Jones DM, Newby LK, Piña IL, Roger VL, Shaw LJ, Zhao D, Beckie TM, Bushnell C, D'Armiento J, Kris-Etherton PM, Fang J, Ganiats TG, Gomes AS, Gracia CR, Haan CK, Jackson EA, Judelson DR, Kelepouris E, Lavie CJ, Moore A, Nussmeier NA, Ofili E, Oparil S, Ouyang P, Pinn VW, Sherif K, Smith SC, Sopko G, Chandra-Strobo N, Urbina EM, Vaccarino V, Wenger NK. Effectiveness-based guidelines for the prevention of cardiovascular disease in women—2011 update: a guideline from the American Heart Association. *Circulation* 2011;**123**:1243–1262.
76. Fraser A, Nelson SM, Macdonald-Wallis C, Cherry L, Butler E, Sattar N, Lawlor DA. Associations of pregnancy complications with calculated cardiovascular disease risk and cardiovascular risk factors in middle age. *Circulation* 2012;**125**:1367–1380.
77. Ridker PM, Buring JE, Rifai N, Cook NR. Development and validation of improved algorithms for the assessment of global cardiovascular risk in women. *JAMA* 2007;**297**:611.
78. Stone NJ, Robinson JG, Lichtenstein AH, Bairey Merz CN, Blum CB, Eckel RH, Goldberg AC, Gordon D, Levy D, Lloyd-Jones DM, McBride P, Schwartz JS, Shero ST, Smith SC, Watson K, Wilson PWF. 2013 ACC/AHA guideline on the treatment of blood cholesterol to reduce atherosclerotic cardiovascular risk in adults. *J Am Coll Cardiol* 2014;**63**:2889–2934.
79. Cook NR, Paynter NP, Eaton CB, Manson JE, Martin LW, Robinson JG, Rossouw JE, Wassertheil-Smolter S, Ridker PM. Comparison of the Framingham and Reynolds Risk scores for global cardiovascular risk prediction in the multiethnic Women's Health Initiative. *Circulation* 2012;**125**:1748–1756, S1–11.
80. Recio-Mayoral A, Rimoldi OE, Camici PG, Kaski JC. Inflammation and microvascular dysfunction in cardiac syndrome X patients without conventional risk factors for coronary artery disease. *JACC Cardiovasc Imaging* 2013;**6**:660–667.
81. Cosin-Sales J, Pizzi C, Brown S, Kaski JC. C-reactive protein, clinical presentation, and ischemic activity in patients with chest pain and normal coronary angiograms. *J Am Coll Cardiol* 2003;**41**:1468–1474.

82. Ciliberti G, Coiro S, Tritto I, Benedetti M, Guerra F, Del Pinto M, Finocchiaro G, Cavallini C, Capucci A, Kaski JC, Ambrosio G. Predictors of poor clinical outcomes in patients with acute myocardial infarction and non-obstructed coronary arteries (MINOCA). *Int J Cardiol* 2018;**267**:41–45.
83. Ohyama K, Matsumoto Y, Takanami K, Ota H, Nishimiya K, Sugisawa J, Tsuchiya S, Amamizu H, Uzuka H, Suda A, Shindo T, Kikuchi Y, Hao K, Tsuburaya R, Takahashi J, Miyata S, Sakata Y, Takase K, Shimokawa H. Coronary adventitial and perivascular adipose tissue inflammation in patients with vasospastic angina. *J Am Coll Cardiol* 2018;**71**:414–425.
84. Ridker PM, Everett BM, Thuren T, MacFadyen JG, Chang WH, Ballantyne C, Fonseca F, Nicolau J, Koenig W, Anker SD, Kastelein JJP, Cornel JH, Pais P, Pella D, Genest J, Cifkova R, Lorenzatti A, Forster T, Kobalava Z, Vida-Simiti L, Flather M, Shimokawa H, Ogawa H, Dellborg M, Rossi PRF, Troquay RPT, Libby P, Glynn RJ. Antiinflammatory therapy with canakinumab for atherosclerotic disease. *N Engl J Med* 2017;**377**:1119–1131.
85. Faccini A, Kaski JC, Camici PG. Coronary microvascular dysfunction in chronic inflammatory rheumatoid diseases. *Eur Heart J* 2016;**37**:1799–1806.
86. Recio-Mayoral A, Mason JC, Kaski JC, Rubens MB, Harari OA, Camici PG. Chronic inflammation and coronary microvascular dysfunction in patients without risk factors for coronary artery disease. *Eur Heart J* 2009;**30**:1837–1843.
87. Ishimori ML, Martin R, Berman DS, Goykhman P, Shaw LJ, Shufelt C, Slomka PJ, Thomson LEJ, Schapira J, Yang Y, Wallace DJ, Weisman MH, Bairey Merz CN. Myocardial ischemia in the absence of obstructive coronary artery disease in systemic lupus erythematosus. *JACC Cardiovasc Imaging* 2011;**4**:27–33.
88. Faccini A, Agricola E, Oppizzi M, Margonato A, Galderisi M, Sabbadini MG, Franchini S, Camici PG. Coronary microvascular dysfunction in asymptomatic patients affected by systemic sclerosis—limited vs. diffuse form. *Circ J* 2015;**79**:825–829.
89. Sandhu VK, Wei J, Thomson LEJ, Berman DS, Schapira J, Wallace D, Weisman MH, Bairey Merz CN, Ishimori ML. A five-year follow up of coronary microvascular dysfunction and coronary artery disease in SLE: results from a Community-Based Lupus Cohort. *Arthritis Care Res (Hoboken)* 2019;doi:10.1002/acr.23920.
90. Sieper J, Braun J, Rudwaleit M, Boonen A, Zink A. Ankylosing spondylitis: an overview. *Ann Rheum Dis* 2002;**61**(Suppl. 3):iii8–iii18.
91. Caliskan M, Erdogan D, Gullu H, Yilmaz S, Gursoy Y, Yildirim A, Yucel E, Muderrisoglu H. Impaired coronary microvascular and left ventricular diastolic functions in patients with ankylosing spondylitis. *Atherosclerosis* 2008;**196**:306–312.
92. Batko B, Maga P, Urbanski K, Ryszawa-Mrozek N, Schramm-Luc A, Koziej M, Mikolajczyk T, McGinnigle E, Czesnikiewicz-Guzik M, Ceranowicz P, Guzik TJ. Microvascular dysfunction in ankylosing spondylitis is associated with disease activity and is improved by anti-TNF treatment. *Sci Rep* 2018;**8**:13205.
93. Bellamy L, Casas J-P, Hingorani AD, Williams DJ. Pre-eclampsia and risk of cardiovascular disease and cancer in later life: systematic review and meta-analysis. *BMJ* 2007;**335**:974.
94. Heida KY, Bots ML, de Groot CJ, van Dunné FM, Hammoud NM, Hoek A, Laven JS, Maas AH, Roeters van Lennep JE, Velthuis BK, Franx A. Cardiovascular risk management after reproductive and pregnancy-related disorders: a Dutch multidisciplinary evidence-based guideline. *Eur J Prev Cardiol* 2016;**23**:1863–1879.
95. Girouard J, Giguère Y, Moutquin J-M, Forest J-C. Previous hypertensive disease of pregnancy is associated with alterations of markers of insulin resistance. *Hypertension* 2007;**49**:1056–1062.
96. Drost JT, Maas AHM, Holeywijn S, Joosten LAB, van Eyck J, van der Schouw YT, de Graaf J. Novel cardiovascular biomarkers in women with a history of early pre-eclampsia. *Atherosclerosis* 2014;**237**:117–122.
97. Zoet GA, Benschop L, Boersma E, Budde RPJ, Fauser BCJM, van der Graaf Y, de Groot CJM, Maas AHM, Roeters van Lennep JE, Steegers EAP, Visseren FL, van Rijn BB, Velthuis BK, Franx A; CREW Consortium. Prevalence of subclinical coronary artery disease assessed by coronary computed tomography angiography in 45- to 55-year-old women with a history of pre-eclampsia. *Circulation* 2018;**137**:877–879.
98. Wagner MM, Bhattacharya S, Visser J, Hannaford PC, Bloemenkamp KW. Association between miscarriage and cardiovascular disease in a Scottish cohort. *Heart* 2015;**101**:1954–1960.
99. Ranthe MF, Diaz LJ, Behrens I, Bundgaard H, Simonsen J, Melbye M, Boyd HA. Association between pregnancy losses in women and risk of atherosclerotic disease in their relatives: a nationwide cohort study. *Eur Heart J* 2016;**37**:900–907.
100. Carr DB, Newton KM, Utschneider KM, Tong J, Gerchman F, Kahn SE, Easterling TR, Heckbert SR. Preeclampsia and risk of developing subsequent diabetes. *Hypertens Pregnancy* 2009;**28**:435–447.
101. Chambers JC, Fusi L, Malik IS, Haskard DO, De Swiet M, Kooner JS. Association of maternal endothelial dysfunction with preeclampsia. *JAMA* 2001;**285**:1607–1612.
102. Ramsay JE, Stewart F, Greer IA, Sattar N. Microvascular dysfunction: a link between pre-eclampsia and maternal coronary heart disease. *BJOG* 2003;**110**:1029–1031.
103. Conway GS, Agrawal R, Betteridge DJ, Jacobs HS. Risk factors for coronary artery disease in lean and obese women with the polycystic ovary syndrome. *Clin Endocrinol* 1992;**37**:119–125.
104. Lo JC, Feigenbaum SL, Yang J, Pressman AR, Selby JV, Go AS. Epidemiology and adverse cardiovascular risk profile of diagnosed polycystic ovary syndrome. *J Clin Endocrinol Metab* 2006;**91**:1357–1363.
105. Daan NMP, Louwers YV, Koster MPH, Eijkemans MJC, de Rijke YB, Lentjes EWG, Fauser BCJM, Laven JSE. Cardiovascular and metabolic profiles amongst different polycystic ovary syndrome phenotypes: who is really at risk? *Fertil Steril* 2014;**102**:1444–1451.e3.
106. Maffei S, Guiducci L, Cugusi L, Cadeddu C, Deidda M, Gallina S, Sciomer S, Gastaldelli A, Kaski J-C. Women-specific predictors of cardiovascular disease risk—new paradigms. *Int J Cardiol* 2019;**286**:190–197.
107. Samimi M, Pourhanifeh MH, Mehdizadehkashi A, Eftekar T, Asemi Z. The role of inflammation, oxidative stress, angiogenesis, and apoptosis in the pathophysiology of endometriosis: basic science and new insights based on gene expression. *J Cell Physiol* 2019;**234**:19384–19392.
108. Rotterdam ESHRE/ASRM-Sponsored PCOS Consensus Workshop Group. Revised 2003 consensus on diagnostic criteria and long-term health risks related to polycystic ovary syndrome. *Fertil Steril* 2004;**81**:19–25.
109. Paradisi G, Steinberg HO, Hempling A, Cronin J, Hook G, Shepard MK, Baron AD. Polycystic ovary syndrome is associated with endothelial dysfunction. *Circulation* 2001;**103**:1410–1415.
110. Carmina E, Orio F, Palomba S, Longo RA, Cascella T, Colao A, Lombardi G, Rini GB, Lobo RA. Endothelial dysfunction in PCOS: role of obesity and adipose hormones. *Am J Med* 2006;**119**:356.e1–6.
111. Sorensen MB, Franks S, Robertson C, Pennell DJ, Collins P. Severe endothelial dysfunction in young women with polycystic ovary syndrome is only partially explained by known cardiovascular risk factors. *Clin Endocrinol* 2006;**65**:655–659.
112. Lakhani K, Leonard A, Seifalian AM, Hardiman P. Microvascular dysfunction in women with polycystic ovary syndrome. *Hum Reprod* 2005;**20**:3219–3224.
113. Khan F, Patterson D, Belch JFF, Hirata K, Lang CC. Relationship between peripheral and coronary function using laser Doppler imaging and transthoracic echocardiography. *Clin Sci (Lond)* 2008;**115**:295–300.
114. Michelsen MM, Mygind ND, Pena A, Aziz A, Frestad V, Høst N, Prescott E. Peripheral reactive hyperemia index and coronary microvascular function in women with no obstructive CAD. *JACC Cardiovasc Imaging* 2016;**9**:411–417.
115. Usselman CW, Yarovinsky TO, Steele FE, Leone CA, Taylor HS, Bender JR, Stachenfeld NS. Androgens drive microvascular endothelial dysfunction in women with polycystic ovary syndrome: role of the endothelin B receptor. *J Physiol* 2019;**597**:2853–2865.
116. Klein SL, Flanagan KL. Sex differences in immune responses. *Nat Rev Immunol* 2016;**16**:626–638.
117. Arnold AP, Cassis LA, Eghbali M, Reue K, Sandberg K. Sex hormones and sex chromosomes cause sex differences in the development of cardiovascular diseases. *Arterioscler Thromb Vasc Biol* 2017;**37**:746–756.
118. Fairweather D. Sex differences in inflammation during atherosclerosis. *Clin Med Insights Cardiol* 2015;**8**(Suppl. 3):49–59.
119. Albertsmeier M, Pratschke S, Chaudry I, Angele MK. Gender-specific effects on immune response and cardiac function after trauma hemorrhage and sepsis. *Viszeralmedizin* 2014;**30**:3–3.
120. Pfeilschifter J, Köditz R, Pföhl M, Schatz H. Changes in proinflammatory cytokine activity after menopause. *Endocr Rev* 2002;**23**:90–119.
121. Straub RH. The complex role of estrogens in inflammation. *Endocr Rev* 2007;**28**:521–574.
122. Harvey RE, Coffman KE, Miller VM. Women-specific factors to consider in risk, diagnosis and treatment of cardiovascular disease. *Womens Health (Lond Engl)* 2015;**11**:239–257.
123. Khuddus MA, Pepine CJ, Handberg EM, Bairey Merz CN, Sopko G, Bavry AA, Denardo SJ, McGORRAY SP, Smith KM, Sharaf BL, Nicholls SJ, Nissen SE, Anderson RD. An intravascular ultrasound analysis in women experiencing chest pain in the absence of obstructive coronary artery disease: a substudy from the National Heart, Lung and Blood Institute-Sponsored Women's Ischemia Syndrome Evaluation (WISE). *J Interv Cardiol* 2010;**23**:511–519.
124. Roqué M, Heras M, Roig E, Masotti M, Rigol M, Betriu A, Balasch J, Sanz G. Short-term effects of transdermal estrogen replacement therapy on coronary vascular reactivity in postmenopausal women with angina pectoris and normal results on coronary angiograms. *J Am Coll Cardiol* 1998;**31**:139–143.
125. Collins P, Rosano GMC, Sarrel PM, Ulrich L, Adamopoulos S, Beale CM, McNeill JG, Poole-Wilson PA. 17 beta-estradiol attenuates acetylcholine-induced coronary arterial constriction in women but not men with coronary heart disease. *Circulation* 1995;**92**:24–30.
126. Manson JE, Hsia J, Johnson KC, Rossouw JE, Assaf AR, Lasser NL, Trevisan M, Black HR, Heckbert SR, Detrano R, Strickland OL, Wong ND, Crouse JR, Stein E, Cushman M. Estrogen plus progestin and the risk of coronary heart disease. *N Engl J Med* 2002;**349**:523–534.
127. Mehta PK, Thobani A, Vaccarino V. Coronary artery spasm, coronary reactivity, and their psychological context. *Psychosom Med* 2019;**81**:233–236.
128. Vaccarino V, Bremner JD. Behavioral, emotional and neurobiological determinants of coronary heart disease risk in women. *Neurosci Biobehav Rev* 2017;**74**:297–309.
129. Vaccarino V, Shah AJ, Rooks C, Ibeanu I, Nye JA, Pimple P, Salerno A, D'Marco L, Karohl C, Bremner JD, Raggi P. Sex differences in mental stress-induced myocardial ischemia in young survivors of an acute myocardial infarction. *Psychosom Med* 2014;**76**:171–180.
130. Sullivan S, Hamadah M, Al Mheid I, Wilmot K, Ramadan R, Alkholer A, Isakadze N, Shah A, Levantsevych O, Pimple PM, Kutner M, Ward L, Garcia EV, Nye J, Mehta PK, Lewis TT, Bremner JD, Raggi P, Quyyumi AA, Vaccarino V. Sex differences in

- hemodynamic and microvascular mechanisms of myocardial ischemia induced by mental stress. *Arterioscler Thromb Vasc Biol* 2018;**38**:473–480.
131. Vaccarino V, Votaw J, Faber T, Veledar E, Murrah NV, Jones LR, Zhao J, Su S, Goldberg J, Raggi JP, Quyyumi AA, Sheps DS, Bremner JD. Major depression and coronary flow reserve detected by positron emission tomography. *Arch Intern Med* 2009;**169**:1668.
 132. Prasad A, Lerman A, Rihal CS. Apical ballooning syndrome (Tako-Tsubo or stress cardiomyopathy): a mimic of acute myocardial infarction. *Am Heart J* 2008;**155**:408–417.
 133. Templin C, Ghadri JR, Diekmann J, Napp LC, Bataiosu DR, Jaguszewski M, Cammann VL, Sarcon A, Geyer V, Neumann CA, Seifert B, Hellermann J, Schwyzer M, Eisenhardt K, Jenewein J, Franke J, Katus HA, Burgdorf C, Schunkert H, Moeller C, Thiele H, Bauersachs J, Tschöpe C, Schultheiss H-P, Laney CA, Rajan L, Michels G, Pfister R, Ukena C, Böhm M, Erbel R, Cuneo A, Kuck K-H, Jacobshagen C, Hasenfuss G, Karakas M, Koenig W, Rottbauer W, Said SM, Braun-Dullaues RC, Cuculi F, Banning A, Fischer T, A, Vasankari T, Airaksinen KEJ, Fijalkowski M, Rynkiewicz A, Pawlak M, Opolski G, Dworakowski R, MacCarthy P, Kaiser C, Osswald S, Galiuto L, Crea F, Dichtl W, Franz WM, Empen K, Felix SB, Delmas C, Lairez O, Erne P, Bax JJ, Ford I, Ruschitzka F, Prasad A, Lüscher TF. Clinical features and outcomes of takotsubo (stress) cardiomyopathy. *N Engl J Med* 2015;**373**:929–938.
 134. Patel SM, Lerman A, Lennon RJ, Prasad A. Impaired coronary microvascular reactivity in women with apical ballooning syndrome (Takotsubo/stress cardiomyopathy). *Eur Hear J Acute Cardiovasc Care* 2013;**2**:147–152.
 135. Collste O, Tornvall P, Alam M, Frick M. Coronary flow reserve during dobutamine stress in Takotsubo stress cardiomyopathy. *BMJ Open* 2015;**5**:e007671.
 136. Kume T, Akasaka T, Kawamoto T, Yoshitani H, Watanabe N, Neishi Y, Wada N, Yoshida K. Assessment of coronary microcirculation in patients with takotsubo-like left ventricular dysfunction. *Circ J* 2005;**69**:934–939.
 137. Peix A, García EJ, Valiente J, Tornés F, Cabrera LO, Cabalé B, Carrillo R, García-Barreto D. Ischemia in women with angina and normal coronary angiograms. *Coron Artery Dis* 2007;**18**:361–366.
 138. Bravo PE, Di Carli MF, Dorbala S. Role of PET to evaluate coronary microvascular dysfunction in non-ischemic cardiomyopathies. *Heart Fail Rev* 2017;**22**:455–464.
 139. El Fakhri G, Kardan A, Sitek A, Dorbala S, Abi-Hatem N, Lahoud Y, Fischman A, Coughlan M, Yasuda T, Di Carli MF. Reproducibility and accuracy of quantitative myocardial blood flow assessment with (82)Rb PET: comparison with (13)N-ammonia PET. *J Nucl Med* 2009;**50**:1062–1071.
 140. Shehata ML, Basha TA, Hayeri MR, Hartung D, Teytelboym OM, Vogel-Claussen J. MR myocardial perfusion imaging: insights on techniques, analysis, interpretation, and findings. *RadioGraphics* 2014;**34**:1636–1657.
 141. Mohammadi AH, Mehta P, Zaya M, Agarwal M, Johnson BD, Petersen J, Sedlak T, Lentz G, Azarbal B, Samuels B, Shufelt C, Slomka P, Berman D, Pepine C, Merz CNB, Thomson L. Sensitivity and specificity of CMRI for diagnosis of microvascular coronary dysfunction in women with signs and symptoms of ischemia and no obstructive coronary artery disease: results from the NHLBI-sponsored Women's Ischemia Syndrome Evaluation (WISE). *J Am Coll Cardiol* 2013;**61**:E825.
 142. Wei J, Bakir M, Darounian N, Li Q, Landes S, Mehta PK, Shufelt CL, Handberg EM, Kelsey SF, Sopko G, Pepine CJ, Petersen JW, Berman DS, Thomson LEJ, Bairey Merz CN. Myocardial scar is prevalent and associated with subclinical myocardial dysfunction in women with suspected ischemia but no obstructive coronary artery disease. *Circulation* 2018;**137**:874–876.
 143. Thomson LEJ, Wei J, Agarwal M, Haft-Baradaran A, Shufelt C, Mehta PK, B. Gill E, Johnson BD, Kenkre T, M. Handberg E, Li D, Sharif B, Berman DS, W. Petersen J, Pepine CJ, Bairey Merz CN. Cardiac magnetic resonance myocardial perfusion reserve index is reduced in women with coronary microvascular dysfunction. A National Heart, Lung, and Blood Institute-sponsored study from the Women's Ischemia Syndrome Evaluation. *Circ Cardiovasc Imaging* 2015;**8**:doi:10.1161/CIRCIMAGING.114.002481.
 144. Liu A, Wijesurendra RS, Liu JM, Forfar JC, Channon KM, Jerosch-Herold M, Piechnik SK, Neubauer S, Kharbada RK, Ferreira VM. Diagnosis of microvascular angina using cardiac magnetic resonance. *J Am Coll Cardiol* 2018;**71**:969–979.
 145. Kothawade K, Bairey Merz CN. Microvascular coronary dysfunction in women—pathophysiology, diagnosis, and management. *Curr Probl Cardiol* 2011;**36**:291–318.
 146. Ludmer PL, Selwyn AP, Shook TL, Wayne RR, Mudge GH, Alexander RW, Ganz P. Paradoxical vasoconstriction induced by acetylcholine in atherosclerotic coronary arteries. *N Engl J Med* 1986;**315**:1046–1051.
 147. Flammer AJ, Anderson T, Celermaier DS, Creager MA, Deanfield J, Ganz P, Hamburg NM, Lüscher TF, Shechter M, Taddei S, Vita JA, Lerman A. The assessment of endothelial function: from research into clinical practice. *Circulation* 2012;**126**:753–767.
 148. Hasdai D, Cannon CR, Mathew V, Holmes DR, Lerman A. Evaluation of patients with minimally obstructive coronary artery disease and angina. *Int J Cardiol* 1996;**53**:203–208.
 149. Lee B-K, Lim H-S, Fearon WF, Yong AS, Yamada R, Tanaka S, Lee DP, Yeung AC, Tremmel JA. Invasive evaluation of patients with angina in the absence of obstructive coronary artery disease. *Circulation* 2015;**131**:1054–1060.
 150. Sara JD, Widmer RJ, Matsuzawa Y, Lennon RJ, Lerman LO, Lerman A. Prevalence of coronary microvascular dysfunction among patients with chest pain and nonobstructive coronary artery disease. *JACC Cardiovasc Interv* 2015;**8**:1445–1453.
 151. AlBadri A, Bairey Merz CN, Johnson BD, Wei J, Mehta PK, Cook-Wiens G, Reis SE, Kelsey SF, Bittner V, Sopko G, Shaw LJ, Pepine CJ, Ahmed B. Impact of abnormal coronary reactivity on long-term clinical outcomes in women. *J Am Coll Cardiol* 2019;**73**:684–693.
 152. Aziz A, Hansen HS, Sechtem U, Prescott E, Ong P. Sex-related differences in vasomotor function in patients with angina and unobstructed coronary arteries. *J Am Coll Cardiol* 2017;**70**:2349–2358.
 153. Schoenenberger AW, Felber S, Gujer S, Moser A, Jamshidi P, Stuck AE, Erne P. Invasive findings in patients with angina equivalent symptoms but no coronary artery disease; Results from the heart quest cohort study. *Int J Cardiol* 2013;**167**:168–173.
 154. Sato K, Kaikita K, Nakayama N, Horio E, Yoshimura H, Ono T, Ohba K, Tsujita K, Kojima S, Tayama S, Hokimoto S, Matsui K, Sugiyama S, Yamabe H, Ogawa H. Coronary vasomotor response to intracoronary acetylcholine injection, clinical features, and long-term prognosis in 873 consecutive patients with coronary spasm: analysis of a single-center study over 20 years. *J Am Heart Assoc* 2013;**2**:e000227.
 155. Sueda S, Miyoshi T, Sasaki Y, Sakaue T, Habara H, Kohno H. Gender differences in sensitivity of acetylcholine and ergonovine to coronary spasm provocation test. *Heart Vessels* 2016;**31**:322–329.
 156. Tarantini G, Migliore F, Cademartiri F, Fraccaro C, Iliceto S. Left anterior descending artery myocardial bridging. *J Am Coll Cardiol* 2016;**68**:2887–2899.
 157. Aydar Y, Yazici HU, Birdane A, Nasifov M, Nadir A, Ulus T, Göktekin O, Gorenk B, Unalir A. Gender differences in the types and frequency of coronary artery anomalies. *Tohoku J Exp Med* 2011;**225**:239–247.
 158. Bayrak F, Degertekin M, Eroglu E, et al. Evaluation of myocardial bridges with 64-slice computed tomography coronary angiography. *Acta Cardiol* 2009;**64**:341–346.
 159. De Rosa R, Sacco M, Tedeschi C, Pepe R, Capogrosso P, Montemarano E, Rotondo A, Runza G, Midiri M, Cademartiri F. Prevalence of coronary artery intramyocardial course in a large population of clinical patients detected by multislice computed tomography coronary angiography. *Acta Radiol* 2008;**49**:895–901.
 160. Pv S, Ingela S, Shigemitsu T, et al. Abstract 16646: invasive assessment of myocardial bridging in women and men presenting with angina in the absence of obstructive coronary artery disease. *Circulation* 2015;**132**(Suppl. 3):A16646.
 161. Cannon RO, Quyyumi AA, Schenke WH, Fananapazir L, Tucker EE, Gaughan AM, Gracely RH, Cattau EL, Epstein SE. Abnormal cardiac sensitivity in patients with chest pain and normal coronary arteries. *J Am Coll Cardiol* 1990;**16**:1359–1366.
 162. Chauhan A, Mullins PA, Thuraisingham SI, Taylor G, Petch MC, Schofield PM. Abnormal cardiac pain perception in syndrome X. *J Am Coll Cardiol* 1994;**24**:329–335.
 163. Pasceri V, Lanza GA, Buffon A, Montenero AS, Crea F, Maseri A. Role of abnormal pain sensitivity and behavioral factors in determining chest pain in syndrome X. *J Am Coll Cardiol* 1998;**31**:62–66.
 164. Nugent L, Mehta PK, Bairey Merz CN. Gender and microvascular angina. *J Thromb Thrombolysis* 2011;**31**:37–46.
 165. Foreman RD. Mechanisms of cardiac pain. *Annu Rev Physiol* 1999;**61**:143–167.
 166. Qin C, Du J, Tang J, Foreman R. Bradykinin is involved in the mediation of cardiac nociception during ischemia through upper thoracic spinal neurons. *Curr Neurovasc Res* 2009;**6**:89–94.
 167. Julius D, Basbaum AI. Molecular mechanisms of nociception. *Nature* 2001;**413**:203–210.
 168. Cannon RO, Quyyumi AA, Mincemoyer R, Stine AM, Gracely RH, Smith WB, Geraci MF, Black BC, Uhde TW, Wacławiw MA, Maher K, Benjamin SB. Imipramine in patients with chest pain despite normal coronary angiograms. *N Engl J Med* 1994;**330**:1411–1417.
 169. Cox ID, Hann CM, Kaski JC. Low dose imipramine improves chest pain but not quality of life in patients with angina and normal coronary angiograms. *Eur Heart J* 1998;**19**:250–254.
 170. Wang W, Sun Y-H, Wang Y-Y, Wang Y-T, Wang W, Li Y-Q, Wu S-X. Randomized trial treatment of functional chest pain with antidepressants: a meta-analysis. *Pain Physician* 2012;**15**:E131–E142.
 171. Sindrup SH, Jensen TS. Efficacy of pharmacological treatments of neuropathic pain: an update and effect related to mechanism of drug action. *Pain* 1999;**83**:389–400.
 172. Mayou RA, Bryant BM, Sanders D, Bass C, Klimes I, Forfar C. A controlled trial of cognitive behavioural therapy for non-cardiac chest pain. *Psychol Med* 1997;**27**:1021–1031.
 173. Chauhan A, Mullins PA, Thuraisingham SI, Taylor G, Petch MC, Schofield PM. Effect of transcutaneous electrical nerve stimulation on coronary blood flow. *Circulation* 1994;**89**:694–702.
 174. Lanza GA, Sestito A, Sgueglia GA, Infusino F, Papacci F, Visocchi M, Ierardi C, Meglio M, Bellocci F, Crea F. Effect of spinal cord stimulation on spontaneous and stress-induced angina and 'ischemia-like' ST-segment depression in patients with cardiac syndrome X. *Eur Heart J* 2005;**26**:983–989.
 175. Cunningham C, Brown S, Kaski JC. Effects of transcendental meditation on symptoms and electrocardiographic changes in patients with cardiac syndrome X. *Am J Cardiol* 2000;**85**:653–655, A10.