

The comparative biogeography of Philippine geckos challenges predictions from a paradigm of climate-driven vicariant diversification across an island archipelago

Jamie R. Oaks¹ Cameron D. Siler² Rafe M. Brown³

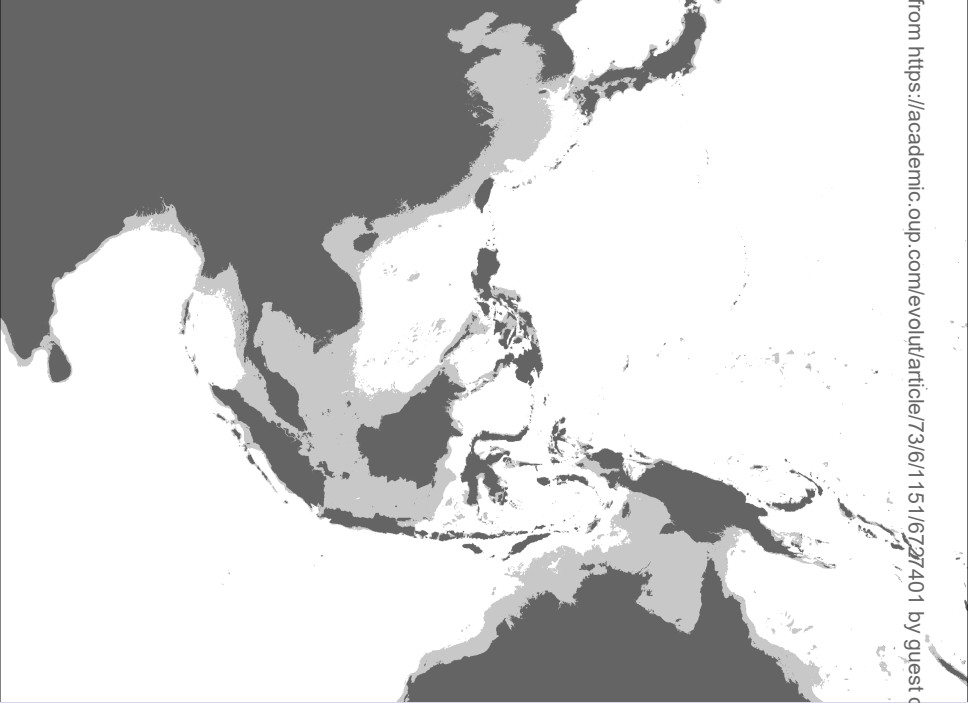
¹Department of Biological Sciences & Museum of Natural History, Auburn University, Auburn, Alabama 36849, USA

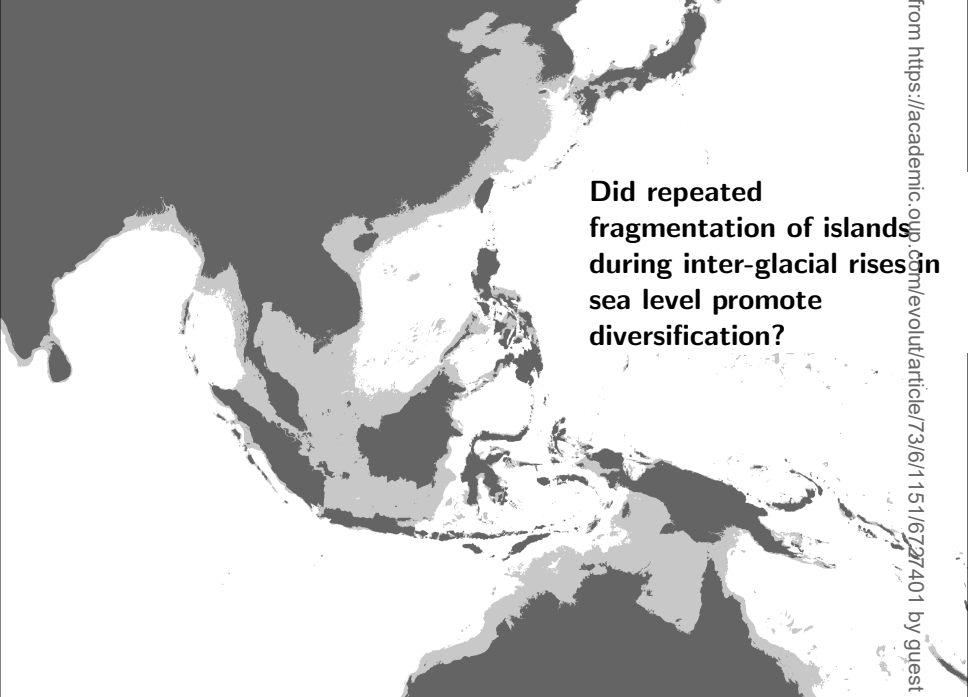
²Sam Noble Oklahoma Museum of Natural History and Department of Biology, University of Oklahoma, Norman, Oklahoma 73072-7029

³Biodiversity Institute and Department of Ecology and Evolutionary Biology, University of Kansas, Lawrence, Kansas 66045, USA

May 3, 2019

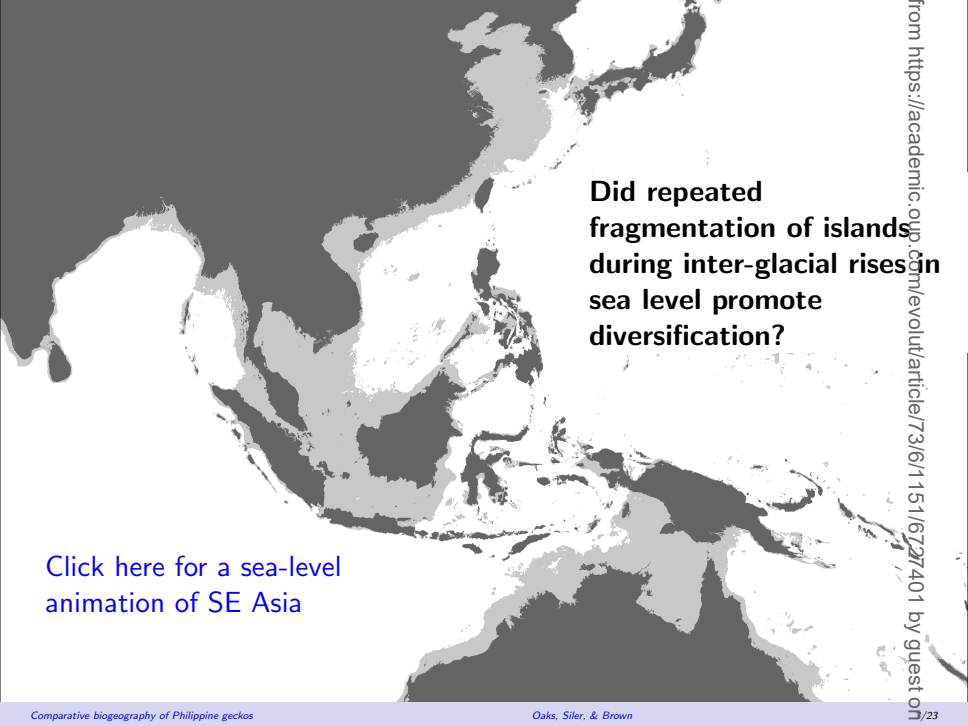






**Did repeated
fragmentation of islands
during inter-glacial rises in
sea level promote
diversification?**

from <https://academic.oup.com/evolut/article/73/6/1151/6727401> by guest on



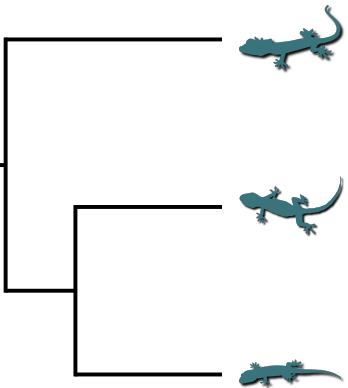
**Did repeated
fragmentation of islands
during inter-glacial rises in
sea level promote
diversification?**

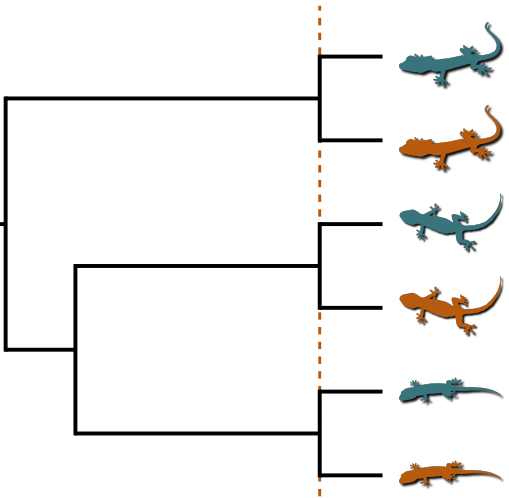
[Click here for a sea-level
animation of SE Asia](#)

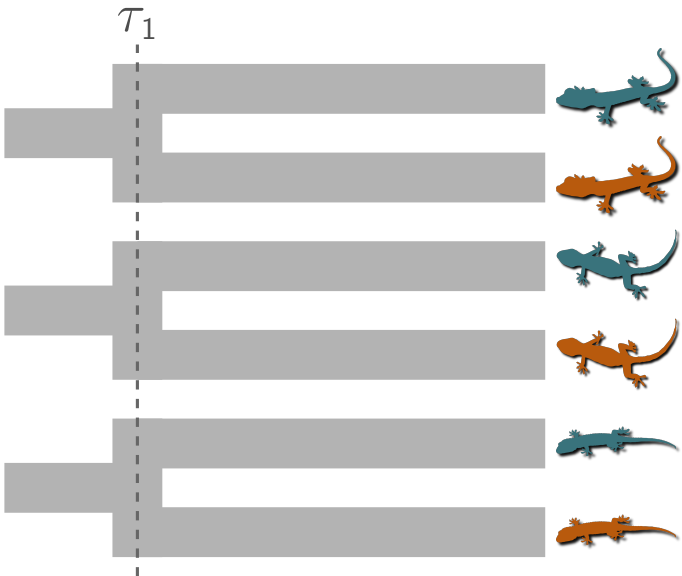
“Species-pump” Hypothesis Repeated climate-driven fragmentation of the Philippine Islands was a primary mechanism of speciation for terrestrial fauna

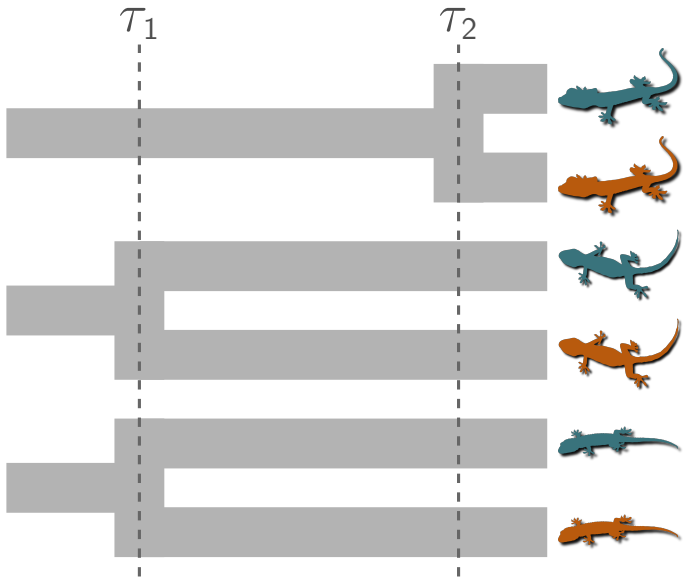
“Species-pump” Hypothesis Repeated climate-driven fragmentation of the Philippine Islands was a primary mechanism of speciation for terrestrial fauna

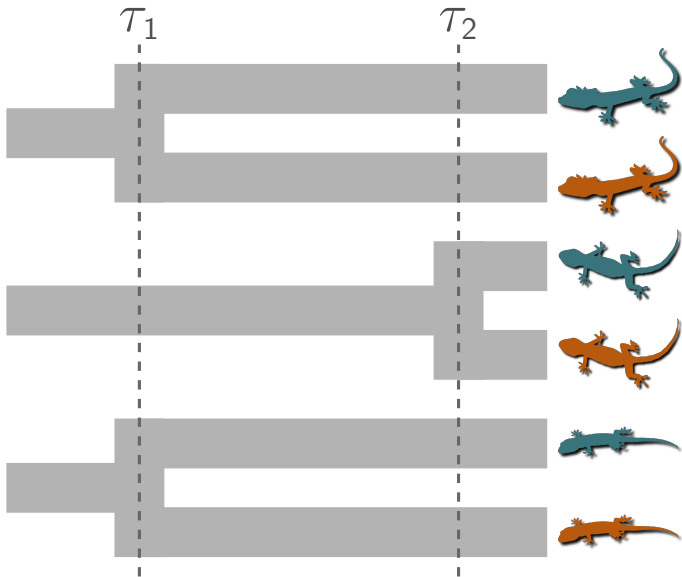
Prediction Taxa co-distributed across islands within the same Pleistocene aggregate island complex (PAIC) will have divergence times that tend to be clustered around times when sea levels fragmented the islands

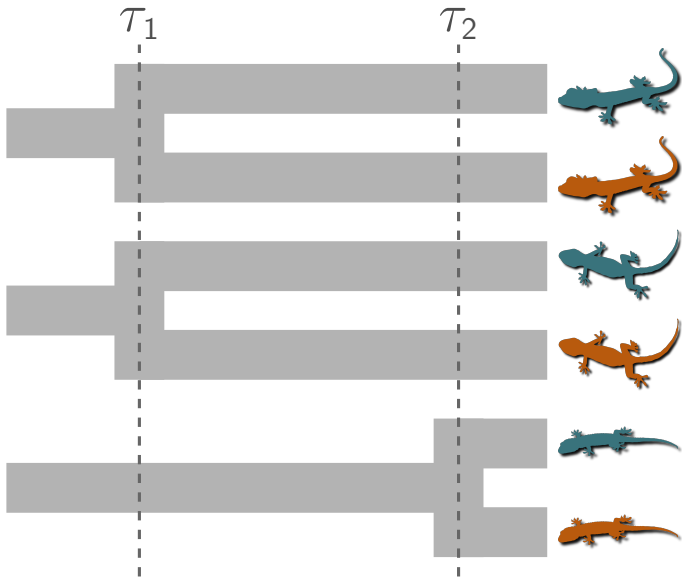


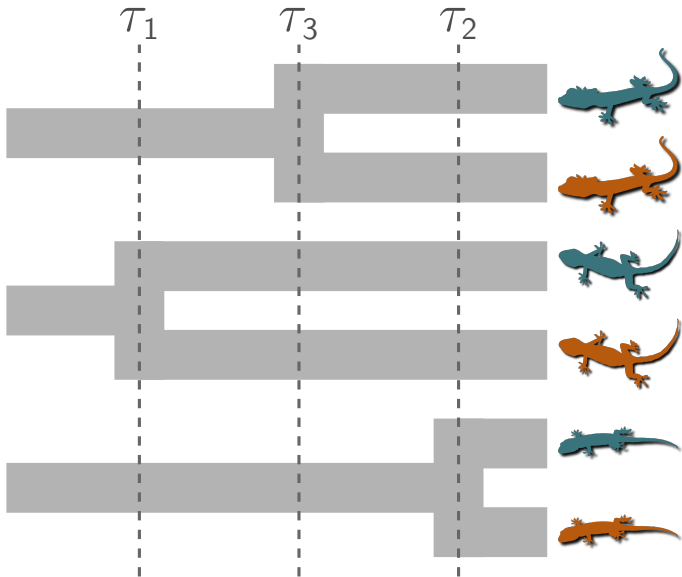


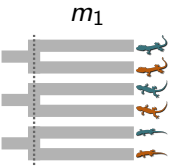
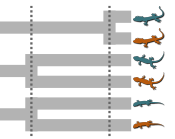
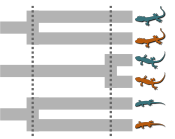
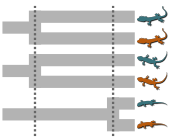
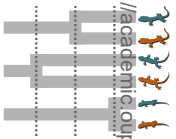


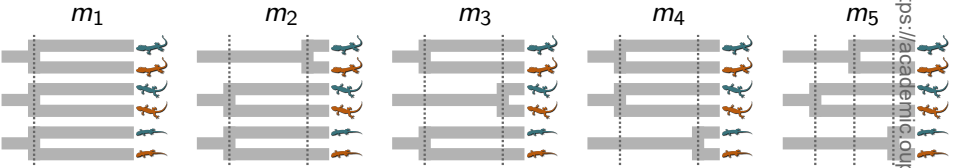












We want to infer the model and divergence times given genetic data

Previous tests of “species-pump”

- ▶ Oaks et al. (2013)¹ collected mitochondrial DNA sequences from 22 pairs of populations (including bats, shrews, skinks, geckos, snakes, and frogs)

¹ J. R. Oaks et al. (2013). *Evolution* 67: 991–1010. ² W. Huang et al. (2011). *BMC Bioinformatics* 12: 1.

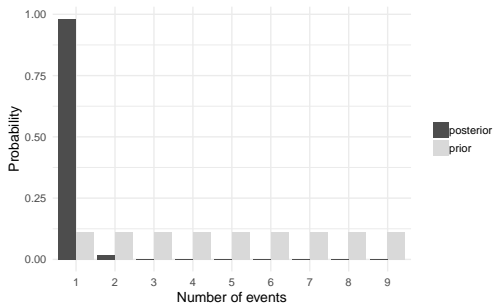
Previous tests of “species-pump”

- ▶ Oaks et al. (2013)¹ collected mitochondrial DNA sequences from 22 pairs of populations (including bats, shrews, skinks, geckos, snakes, and frogs)
 - ▶ Analyzed these data with ABC method msBayes²

¹ J. R. Oaks et al. (2013). *Evolution* 67: 991–1010. ² W. Huang et al. (2011). *BMC Bioinformatics* 12: 1.

Previous tests of “species-pump”

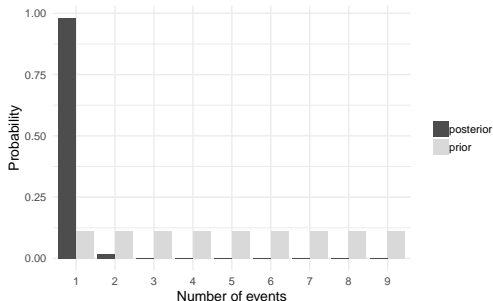
- ▶ Oaks et al. (2013)¹ collected mitochondrial DNA sequences from 22 pairs of populations (including bats, shrews, skinks, geckos, snakes, and frogs)
 - ▶ Analyzed these data with ABC method `msBayes`²
 - ▶ Found strong support for shared divergences across taxa (results below for 9 pairs from islands of Negros and Panay)



¹ J. R. Oaks et al. (2013). *Evolution* 67: 991–1010. ² W. Huang et al. (2011). *BMC Bioinformatics* 12: 1.

Previous tests of “species-pump”

- ▶ Oaks et al. (2013)¹ collected mitochondrial DNA sequences from 22 pairs of populations (including bats, shrews, skinks, geckos, snakes, and frogs)
 - ▶ Analyzed these data with ABC method `msBayes`²
 - ▶ Found strong support for shared divergences across taxa (results below for 9 pairs from islands of Negros and Panay)
 - ▶ But, method was very sensitive to prior assumptions and often biased toward estimating co-divergences



¹ J. R. Oaks et al. (2013). *Evolution* 67: 991–1010. ² W. Huang et al. (2011). *BMC Bioinformatics* 12: 1.

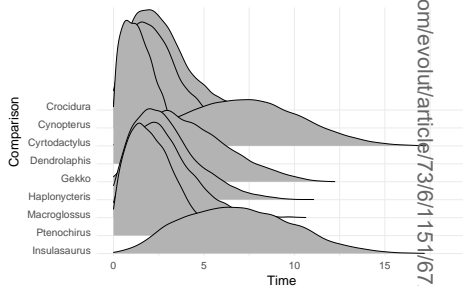
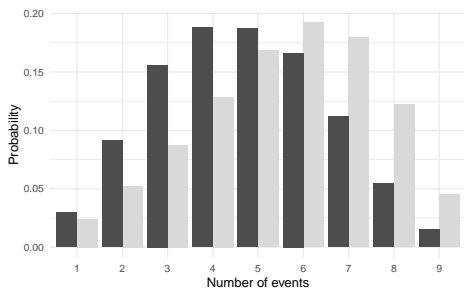
Previous tests of “species-pump”

- ▶ Oaks (2014)¹ reanalyzed the data from Oaks et al. (2013)² with a modified ABC method `dpp-msbayes`

¹ J. R. Oaks (2014). *BMC Evolutionary Biology* 14: 150. ² J. R. Oaks et al. (2013). *Evolution* 67: 991–1010.

Previous tests of “species-pump”

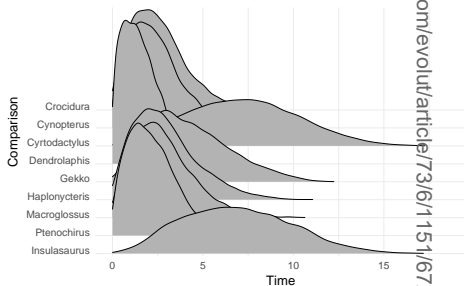
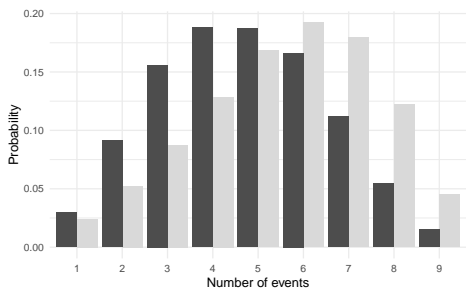
- ▶ Oaks (2014)¹ reanalyzed the data from Oaks et al. (2013)² with a modified ABC method `dpp-msbayes`
 - ▶ New method was less biased, but little information in summary statistics to inform divergence times



¹ J. R. Oaks (2014). *BMC Evolutionary Biology* 14: 150. ² J. R. Oaks et al. (2013). *Evolution* 67: 991–1010.

Previous tests of “species-pump”

- ▶ Oaks (2014)¹ reanalyzed the data from Oaks et al. (2013)² with a modified ABC method `dpp-msbayes`
 - ▶ New method was less biased, but little information in summary statistics to inform divergence times

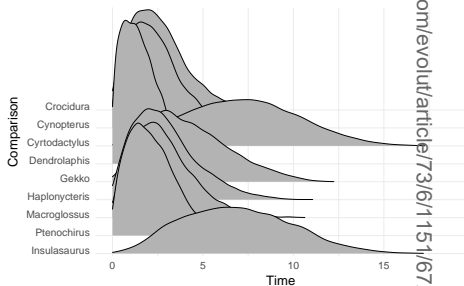
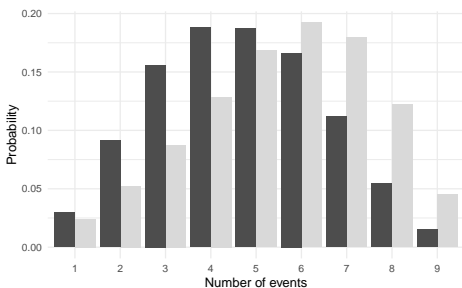


What now? We need **more data** and/or an **improved method** that better utilizes the information in those data.

¹ J. R. Oaks (2014). *BMC Evolutionary Biology* 14: 150. ² J. R. Oaks et al. (2013). *Evolution* 67: 991–1010.

Previous tests of “species-pump”

- ▶ Oaks (2014)¹ reanalyzed the data from Oaks et al. (2013)² with a modified ABC method dpp-msbayes
 - ▶ New method was less biased, but little information in summary statistics to inform divergence times



What now? We need **more data** and/or an **improved method** that better utilizes the information in those data. **Our goal is to do both.**

¹ J. R. Oaks (2014). *BMC Evolutionary Biology* 14: 150. ² J. R. Oaks et al. (2013). *Evolution* 67: 991–1010.

Cyrtodactylus (Gekkonidae)

- ▶ 265+ species across Asia
- ▶ 10+ species across Philippines
- ▶ Nocturnal, scansorial lizards that eat terrestrial invertebrates
- ▶ Specialized bent toes for climbing

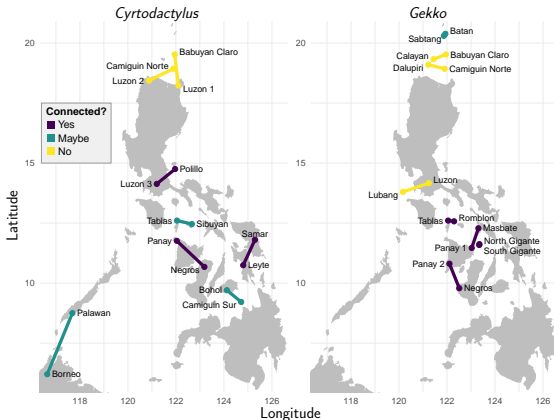


Gekko (Gekkonidae)

- ▶ 60+ species across Southeast Asia
- ▶ 14+ species across Philippines
- ▶ Nocturnal, scansorial lizards that eat terrestrial invertebrates
- ▶ Subdigital lamellae for climbing



Methods



- ▶ Sampled individuals from 8 pairs of populations for both *Cyrtodactylus* and *Gekko*
 - ▶ Sampled 2–5 individuals per population
- ▶ Collected genome-wide DNA sequence data from each individual
 - ▶ Restriction-site-associated DNA sequencing (RADseq)

Analyzed RADseq data with full-likelihood Bayesian comparative phylogeographic method:

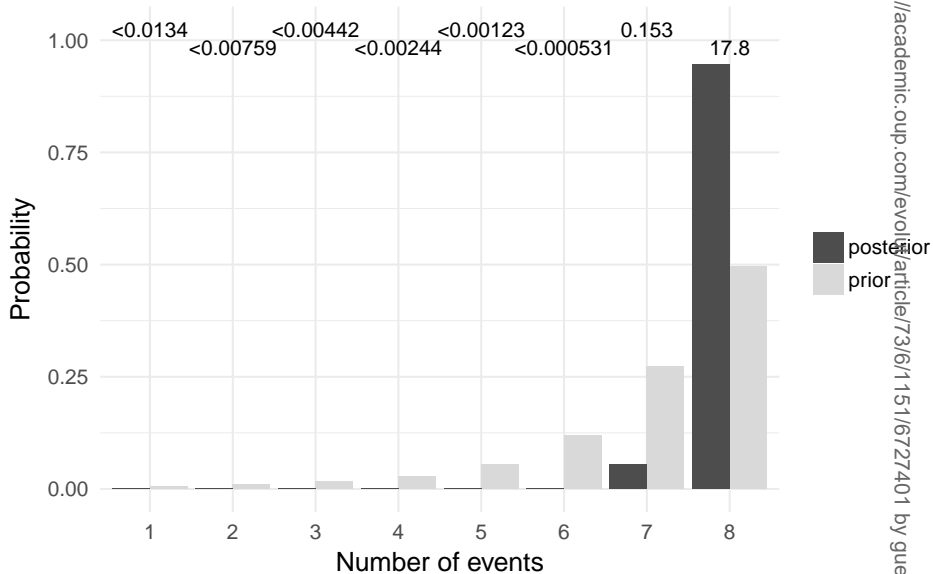
Ecoevolity: Estimating evolutionary coevality

Analyzed RADseq data with full-likelihood Bayesian comparative phylogeographic method:

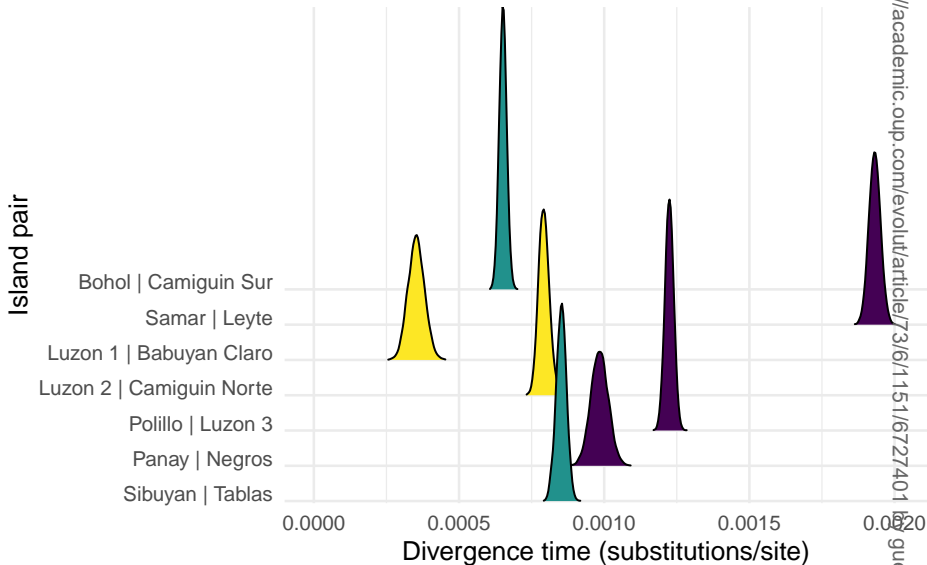
Ecoevolity: Estimating evolutionary coevality

- ▶ Used simulations to assess how well ecoevolity works given the gekkonid RADseq data sets

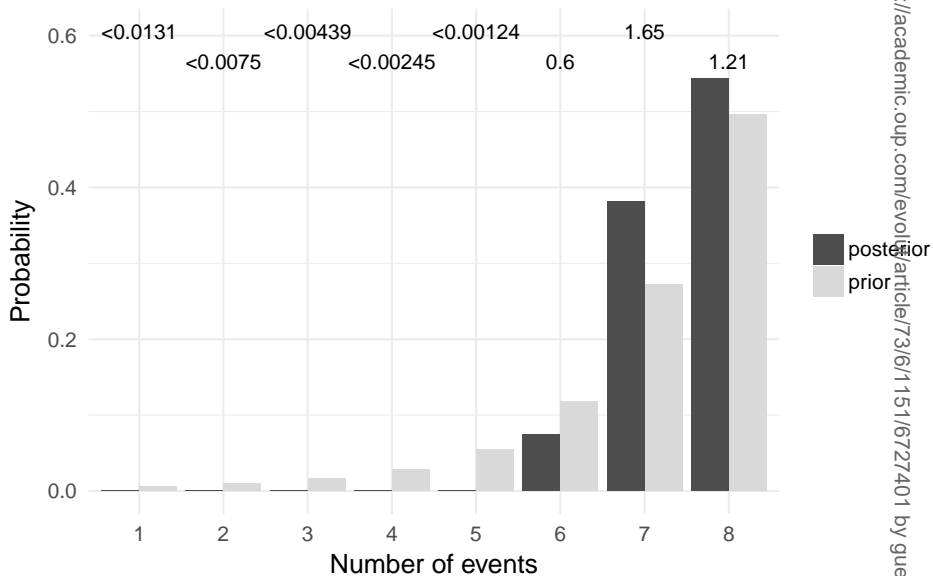
Results: *Cyrtodactylus* (Figure 2)



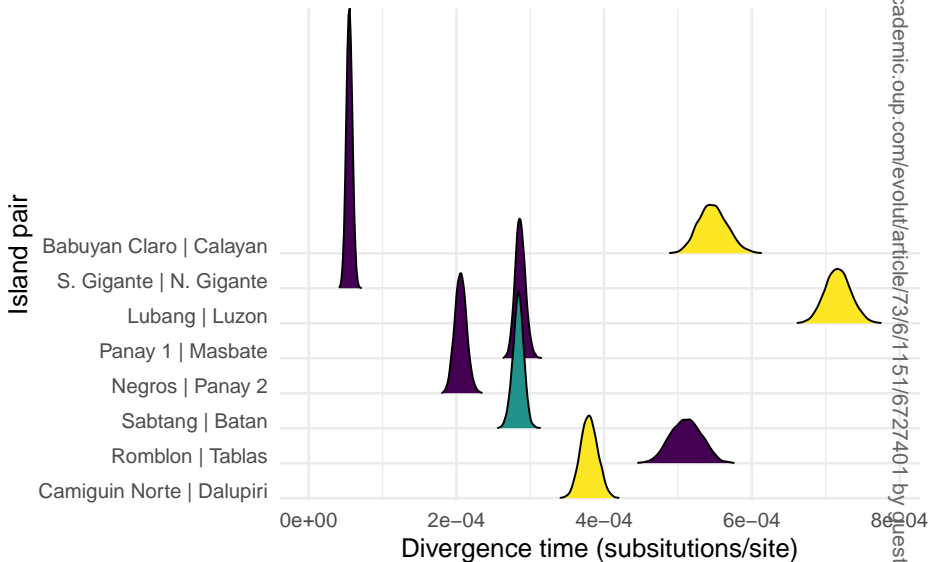
Results: *Cyrtodactylus* (Figure 3)



Results: *Gekko* (Figure 4)



Results: *Gekko* (Figure 5)



Key findings

- ▶ Strong support that all 8 pairs of *Cyrtodactylus* populations diverged independently

Key findings

- ▶ Strong support that all 8 pairs of *Cyrtodactylus* populations diverged independently
- ▶ Weak support that all 8 pairs of *Gekko* populations diverged independently

Key findings

- ▶ Strong support that all 8 pairs of *Cyrtodactylus* populations diverged independently
- ▶ Weak support that all 8 pairs of *Gekko* populations diverged independently
- ▶ Simulation results suggest *ecoevolity* can accurately estimate the timing and number of divergences given the gekkonid RADseq data

Caveats

- ▶ Too few island pairs to rule out climate-driven vicariant speciation
- ▶ Differences in divergence times could be due to variation in fragmentation times among island pairs
- ▶ Differences in divergence could also be due to variation in mutation rates

Caveats

- ▶ Too few island pairs to rule out climate-driven vicariant speciation
- ▶ Differences in divergence times could be due to variation in fragmentation times among island pairs
- ▶ Differences in divergence could also be due to variation in mutation rates

- ▶ Seems safe to conclude that the “species-pump” is not the rule for gekkonids, but maybe the exception

Take home points

- ▶ Support against the “species-pump” hypothesis

Take home points

- ▶ Support against the “species-pump” hypothesis
- ▶ Results suggest repeated cycles of climate-driven island fragmentation were not an important mechanism of speciation for gekkonid lizards in the Philippines

Take home points

- ▶ Support against the “species-pump” hypothesis
- ▶ Results suggest repeated cycles of climate-driven island fragmentation were not an important mechanism of speciation for gekkonid lizards in the Philippines
- ▶ Rare over-water dispersal via rafting on vegetation is likely an important mechanism responsible for the distribution of gekkonid lizards in the Philippines

Everything is on GitHub...

Software:

- ▶ Ecoevolity: <https://github.com/phyletica/ecoevolity>

Open-Science Notebook:

- ▶ Gecko RADseq: <https://github.com/phyletica/gekgo>

Acknowledgments

Ideas and feedback:

- ▶ Phyletica Lab (the Phyleticians)
- ▶ Constructive feedback from Editor-in-Chief Mohamed Noor, Associate Editor David Weisrock, and four anonymous reviewers greatly improved this work

Lab work:

- ▶ Patrick Monnahan and John Kelly for their help with the MSG libraries

Computation:

- ▶ Alabama Supercomputer Authority
- ▶ Auburn University Hopper Cluster

Funding:



Photo credits:

- ▶ Rafe Brown and Cam Siler
- ▶ [PhyloPic!](#)

Questions?

joaks@auburn.edu

phyletica.org



© 2007 Boris Kulikov boris-kulikov.blogspot.com

Figure 6

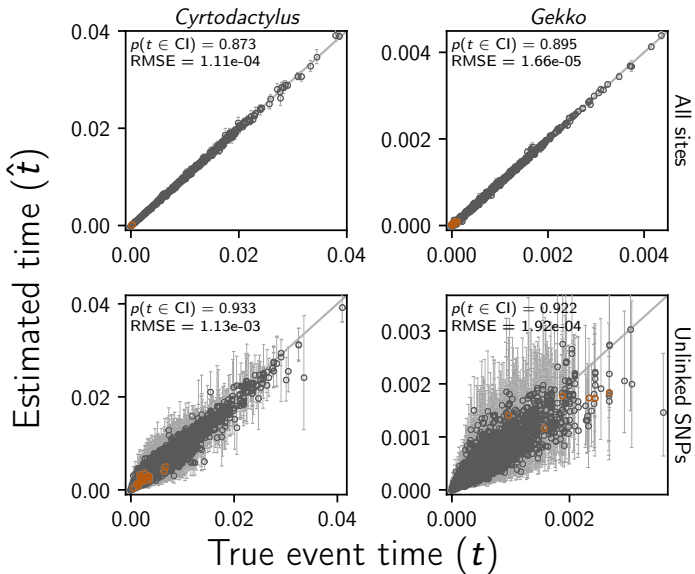


Figure 7

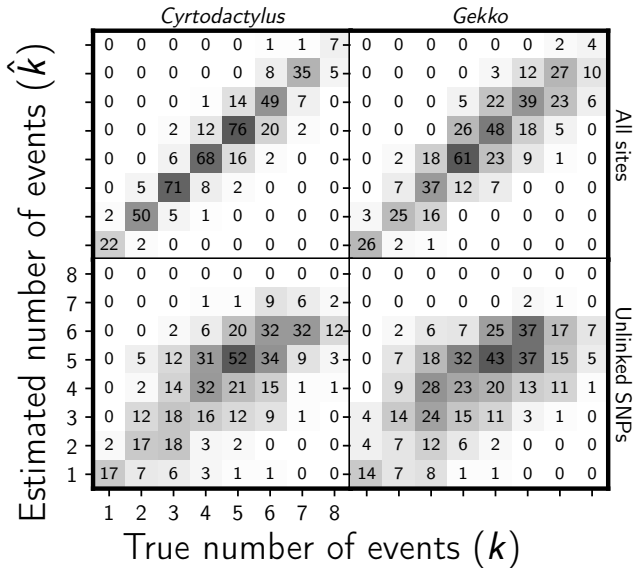


Figure S1

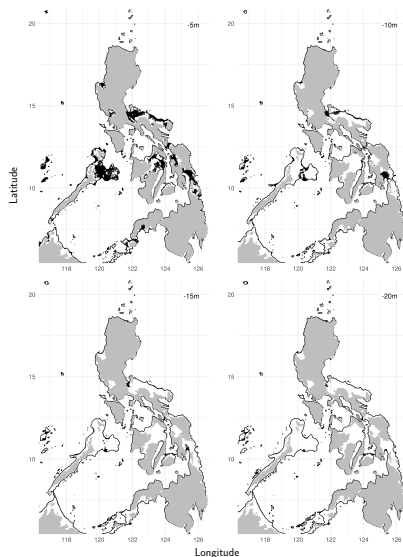


Figure S2

[Click here for a sea-level animation of SE Asia](#)

Figure S3

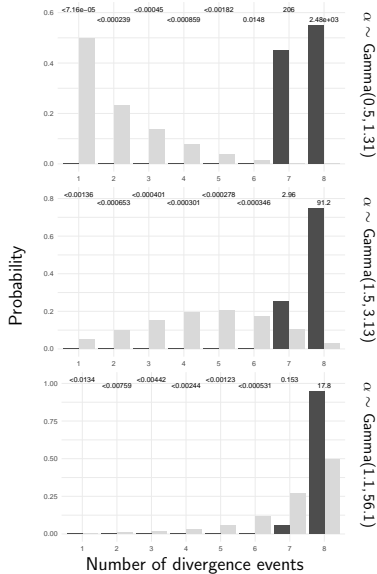


Figure S4

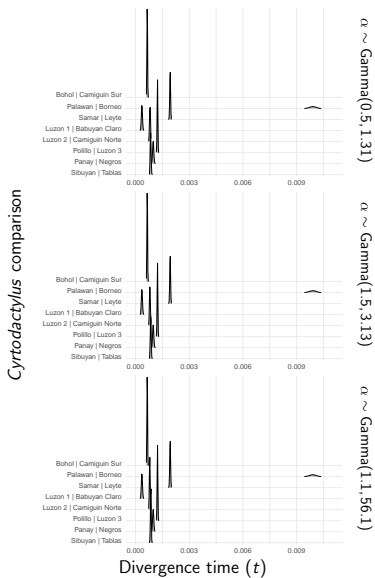


Figure S5

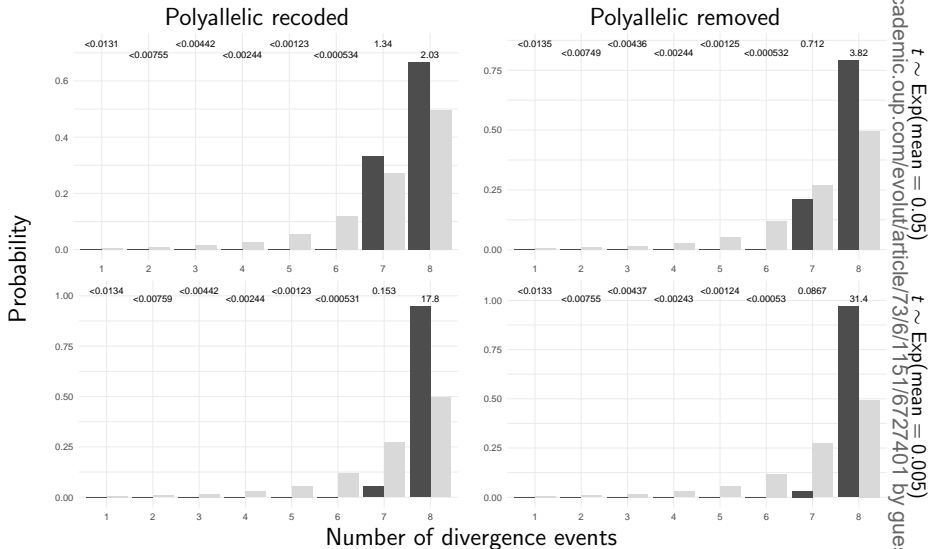
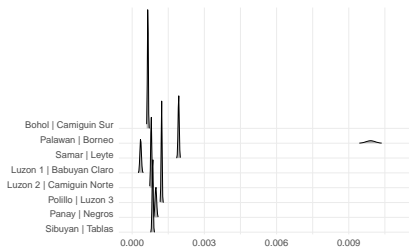
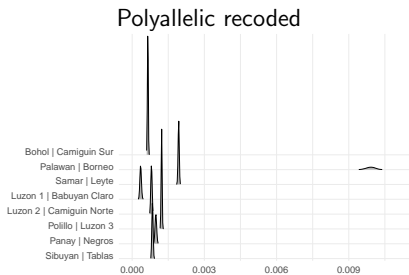
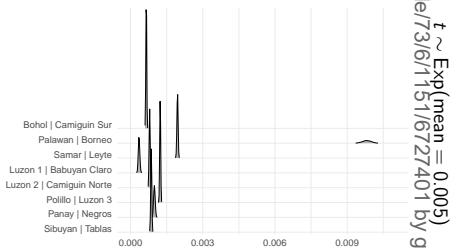
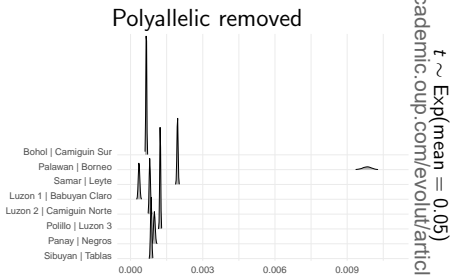


Figure S6

Cyrtodactylus comparison



Divergence time (t)



$t \sim \text{Exp}(\text{mean} = 0.05)$
 $t \sim \text{Exp}(\text{mean} = 0.005)$
from <https://academic.oup.com/evolut/article/73/6/1151/6727401> by guest on

Figure S7

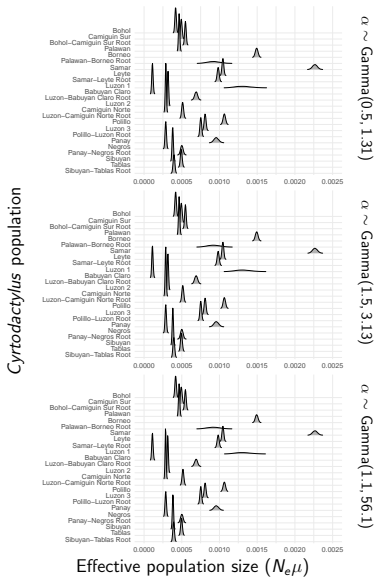
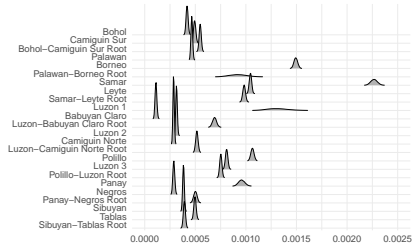
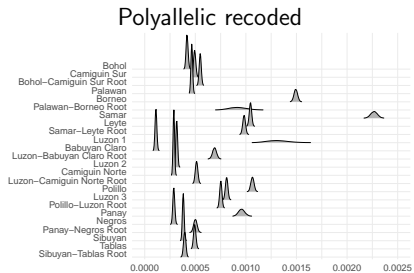
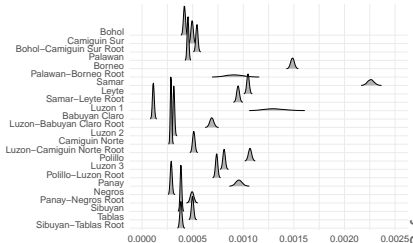
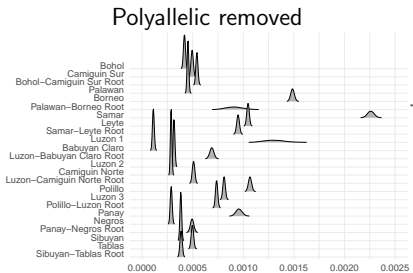


Figure S8

Cyrtodactylus comparison



Effective population size ($N_e\mu$)



$t \sim \text{Exp}(\text{mean} = 0.05)$

$t \sim \text{Exp}(\text{mean} = 0.005)$

from <https://academic.oup.com/evolut/article/73/6/1151/6727401> by guest on

Figure S9

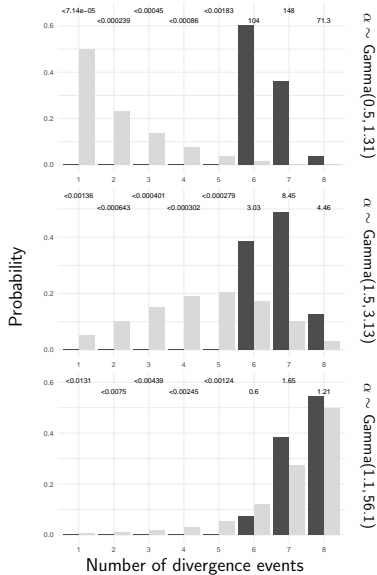


Figure S10

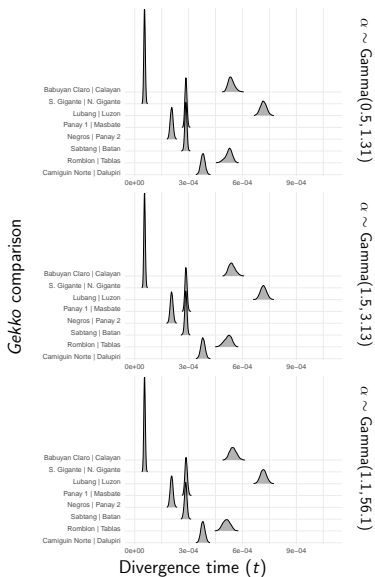


Figure S11

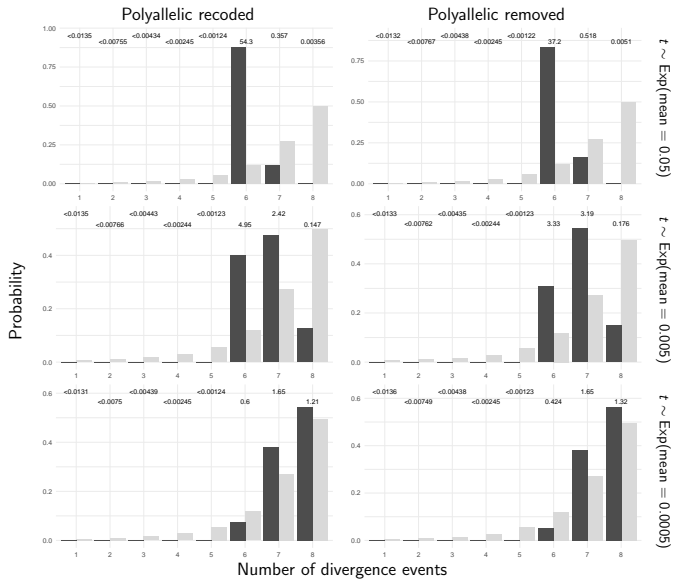


Figure S12

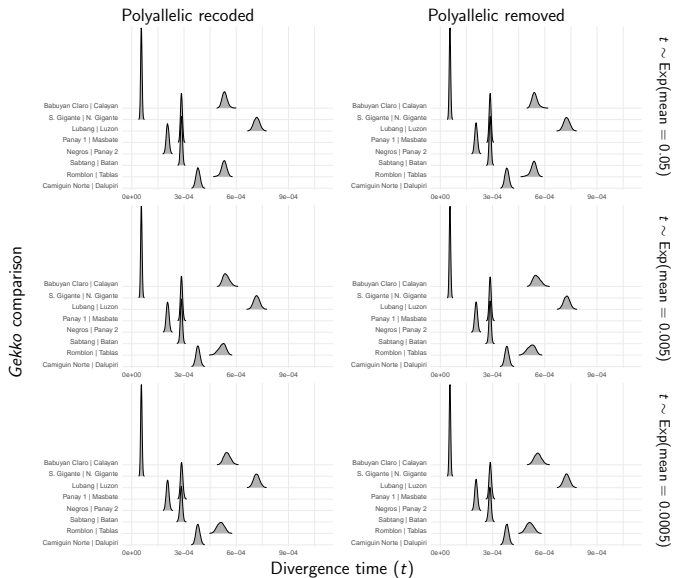


Figure S13

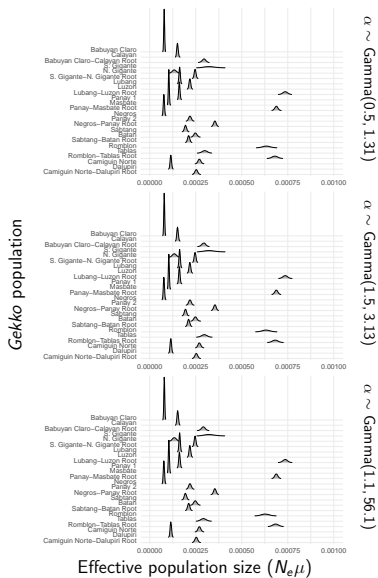


Figure S14

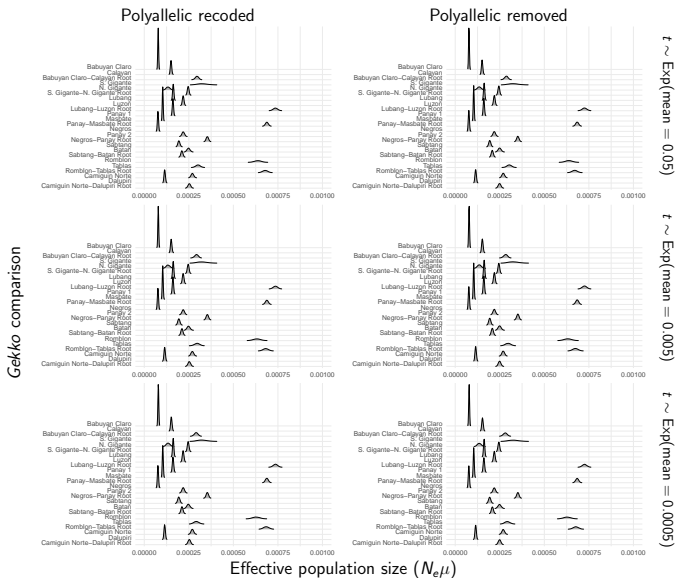


Figure S15

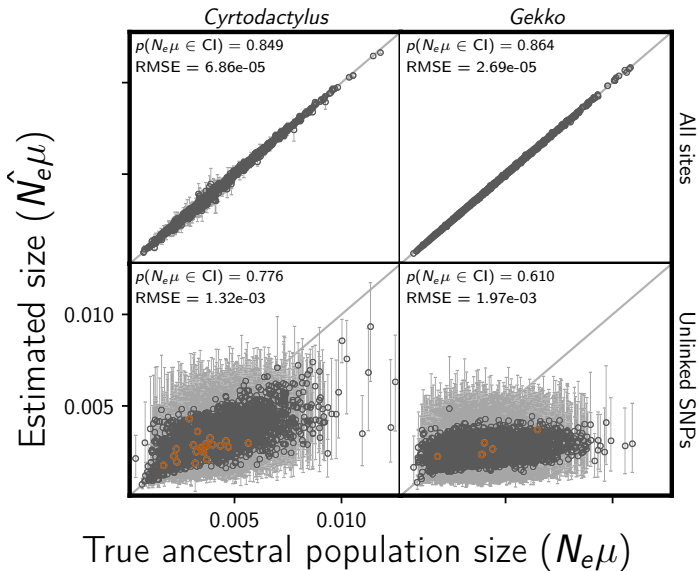


Figure S16

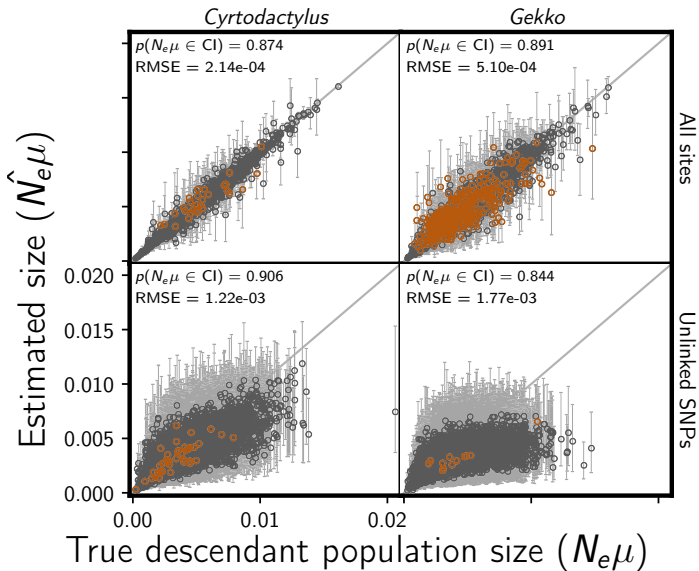


Figure S17

