

Common Trawl Fauna in the Chukchi and Beaufort seas

Annelida & other worms

Disclaimer:

This is not a complete guide to the trawl fauna of the Pacific Arctic. There are many other species that are not presented in this guide. Most identifications of the depicted organisms have been verified by a variety of taxonomic experts but small taxonomic features may not be clearly visible in the images and could lead to confusion with similar taxa. As such, it is recommended that identification of new collections may be aided by this guide but that final identifications should be confirmed on vouchers by taxonomic experts.

Katrin Iken, College of Fisheries and Ocean Sciences, University of Alaska Fairbanks, USA (contact: kbiken@Alaska.edu)

Bodil Bluhm, UiT The Arctic University of Norway

MBON
Marine Biodiversity
Observation Network

Golfingia margaritacea



Golfingia vulgaris



Darker, rougher skin than *G. margaritacea*

Phascolion strombus



Brown-mottled color
Mostly small size
Common in the Beaufort Sea

Echiurus echiurus

Echiura



Hamingia arctica

Distinct green color



Priapula

Priapulus caudatus



Nemertea

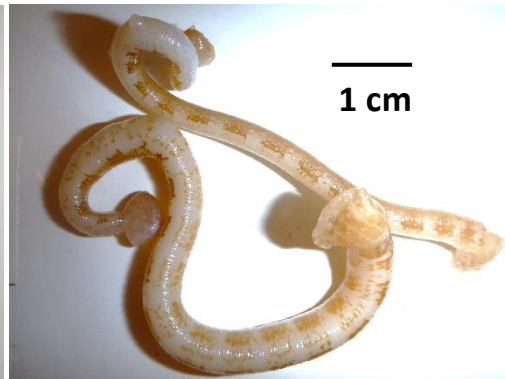


Many different types, sizes, colors



Notostomum laeve (Hirudinea)

Annelida: Oligochaeta



Polynoidae: Scale Worms

Annelida: Polychaeta

Eunoe nodosa



Eunoe depressa



Annelida: Polychaeta

Arctonoe fragilis



Usually lives in oral groove of large sea stars
Red mottled color



Arctonoe vittata



Usually lives in oral groove of large sea stars
Pale tan to white color

Annelida: Polychaeta

Bylgides promamme



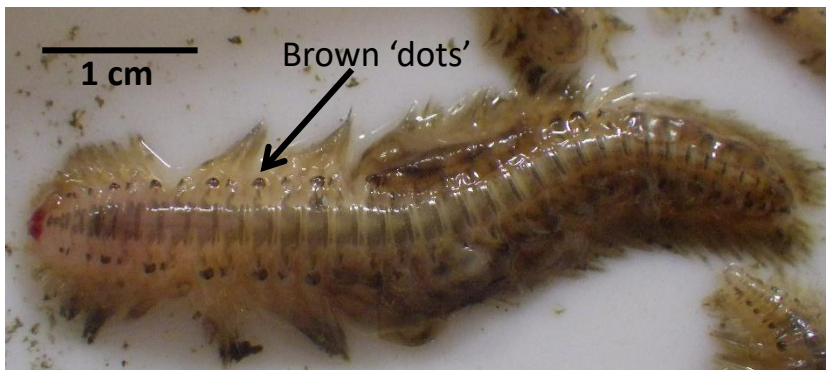
Scales come off easily

Distinct yellow-tan “bulbs” along setae on both sides (arrow)

Common in the Beaufort Sea

Neurochaetae with capillary tips

Bylgides sarsi



Scales come off easily

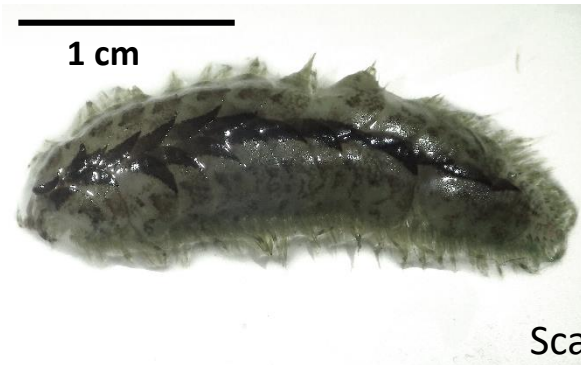
Brown dots along both sides (other species can also have those)

Red dots on head (other species can also have that)

Common in the Beaufort Sea

Annelida: Polychaeta

Harmothoe imbricata



- Scales come off easily
- Distinct yellow-tan setae bags along both sides
- Neurochaetae bidentate
- Highly color variable

Arcteobia anticostiensis



- Small body size
- Scales stay on
- Brown mottled scales

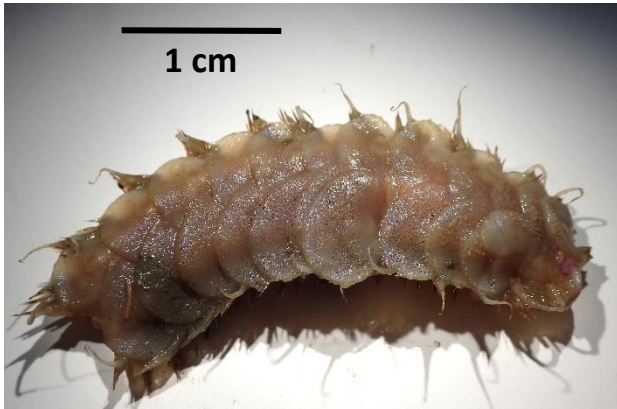
Melaenis loveni



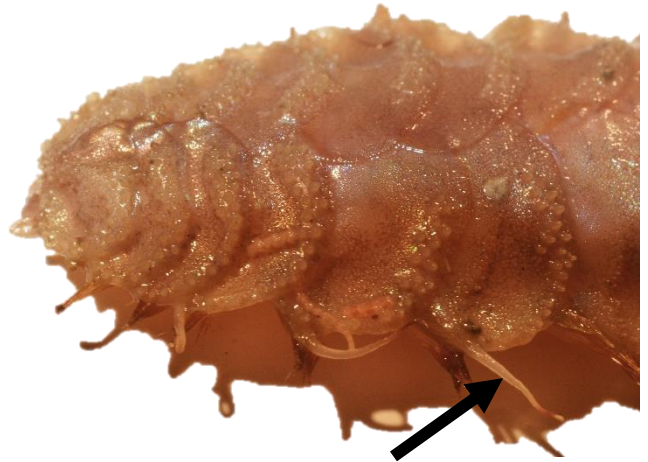
- Small body size
- Dark brown color

Annelida: Polychaeta

Gattyana ciliata



- Flesh-pink color
- Fleshy scales sculptured
- Distinct cirrae extend from underneath scales



Gattyana cirrhosa



- Dark brown scales, do not come off easily
- Sculptured scales
- Slender (narrow) body shape

Gattyana amondseni



- Iridescent sheen on scales
- Sculptured scales

Annelida: Polychaeta

Spiochaetopterus sp.



Worms in thin proteinaceous tubes
Worms disintegrate easily (arrow)

Polyphysia crassa (Scalibregmidae)



Translucent
Very few setae

Protis arctica

Polychaete in thin calcareous tubes

Bispira crassicornis

Polychaete in thick mud tubes

Axionice maculata

Polychaete in curly sediment tubes

Thelepus cincinnatus

Polychaete in gold-iridescent, flexible (proteinaceous) tubes

Annelida: Polychaeta

Maldanidae



Common: *Maldane sarsi*



Common: *Nicomache sp.*



star-like pygidium

Phyllodoce groenlandica

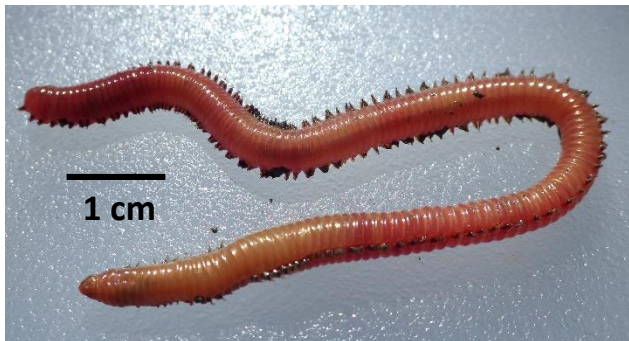


Paddle-like parapodia
Green-black back

Scoletoma fragilis



Orange-iridescent color
Black parapodia



Eunicidae



Annelida: Polychaeta

Euphrosine hortensis



Flabelligeridae



Piromis capulata



Brada villosa



Annelida: Polychaeta

Brada ochotensis

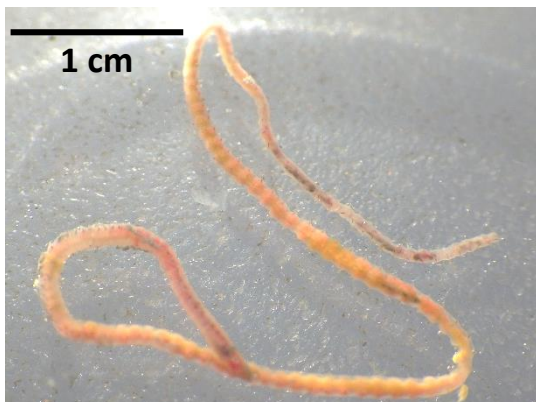


Nothria conchylega (previously: *Onuphis conchylega*)



Live in flat gravel tubes

Lumbrineridae

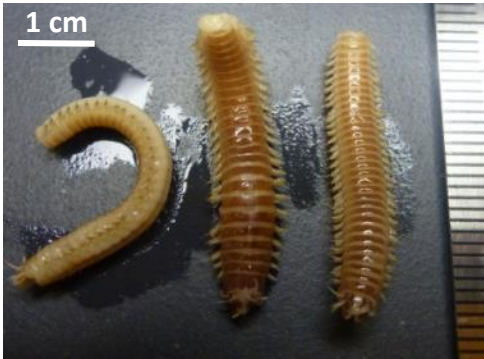


Annelida: Polychaeta

Nereididae



Nereis zonata



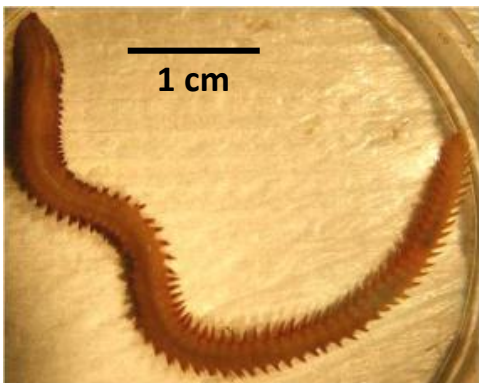
Brown-tan striped
Flattened body shape

Nereis pelagica

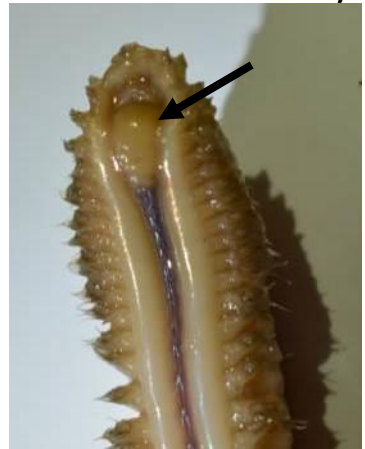


Several others common:
N. punctata (Chukchi), *N. caeca*
(Chukchi), *N. longosetosa* (Beaufort)

Nephtys sp.



Distinct "throat" structure ventrally



Opheliidae

Travisia sp.



Annelida: Polychaeta

Strong smell of sulfur when cut open

Travisia japonica



Ophelina acuminata



Stiff body, two distinct ventral ridges, cirrae

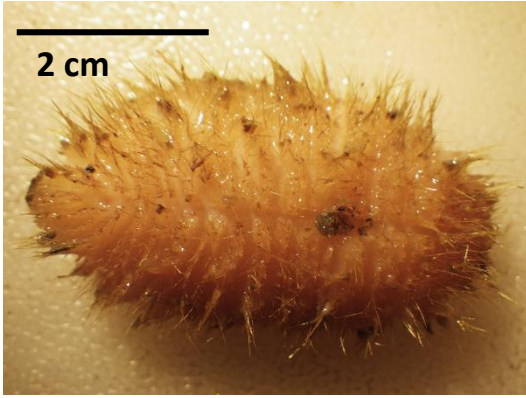
Other species occurring: *O. breviata* (tube-like pygidium)

Scalibregma californicum



Spinther oniscoides

Annelida: Polychaeta



Sternaspis fossor (Sternaspidae)



Cistenides hyperborea (Pectinariidae)

In cone-shaped sand tubes



Annelida: Polychaeta

Ampharete sp. (Ampharetidae)



Ampharete acutifrons (Ampharetidae)



Terebellides stroemii (Trichobranchidae)



“Book-like” gill

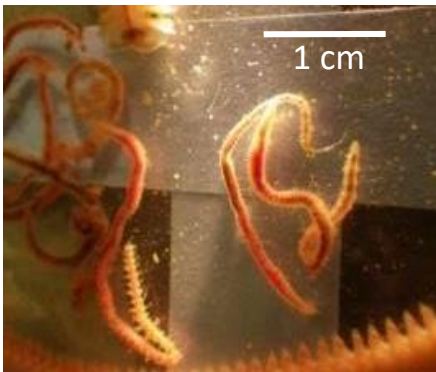
Annelida: Polychaeta

Pista elongata (formerly *P. maculata*) (Terebellidae)



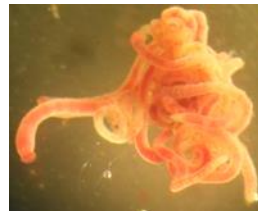
Builds mud-gravel tubes

Chaetozone setosa



Red-tan w/ long tentacles

Barantolla americana



Curl into red knots
Looks "lumpy"
Semi-transparent

Annelida: Polychaeta

Sabellidae



Chone magna



Annelida: Polychaeta

Scoloplos armiger



Leitoscoloplos pugettensis (Orbiniidae)



Parapodia very small in head region

Glycinde wireni (Goniadidae)



Mostly bright yellow or orange
Head very pointed
Often curl into spiral

Glycinde armigera

