

# Common Trawl Fauna in the Chukchi and Beaufort seas

## Miscellaneous Taxa

### Disclaimer:

This is not a complete guide to the trawl fauna of the Pacific Arctic. There are many other species that are not presented in this guide. Most identifications of the depicted organisms have been verified by a variety of taxonomic experts but small taxonomic features may not be clearly visible in the images and could lead to confusion with similar taxa. As such, it is recommended that identification of new collections may be aided by this guide but that final identifications should be confirmed on vouchers by taxonomic experts.

**Katrin Iken**, College of Fisheries and Ocean Sciences, University of Alaska Fairbanks, USA (contact: [kbiken@Alaska.edu](mailto:kbiken@Alaska.edu))

**Bodil Bluhm**, UiT The Arctic University of Norway

**MBON**  
Marine Biodiversity  
Observation Network

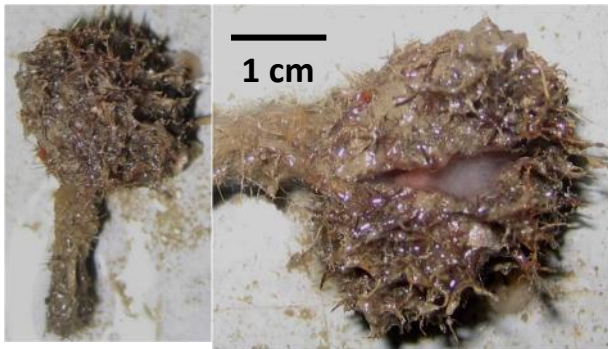
*Boltenia ovifera*

Ascidiacea



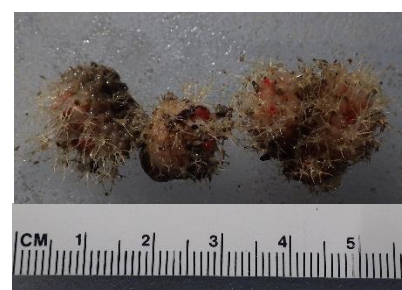
Can be fuzzy when small

*Boltenia villosa*



Stalked

*Boltenia echinata*



Not stalked  
Distinct "spiky" tunic cover

*Halocynthia aurantium*

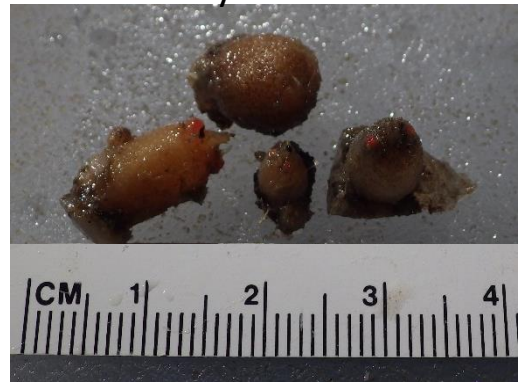
Ascidiacea



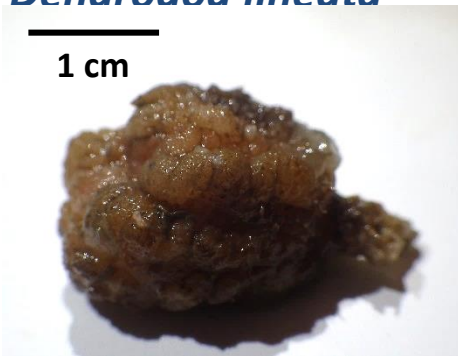
*Styela rustica*



Often many small individuals



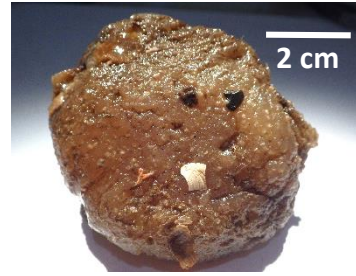
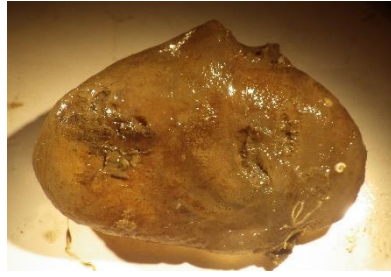
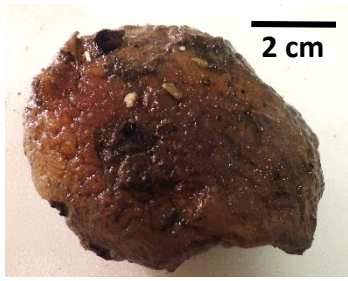
*Dendrodoa lineata*



*Pelonaia corrugata*



*Ascidia callosa*



Thick tunic  
Solitary tunicate  
Can be transparent or brownish

*Ascidia obliqua*



"eggplant" shape, large size  
Adjacent siphons on upper surface



*Molgula retortiformis*



Often overgrown  
Distinct "snorkel-like" siphon extension

*Molgula griffithsii*



*Chelyosoma macleayanum*

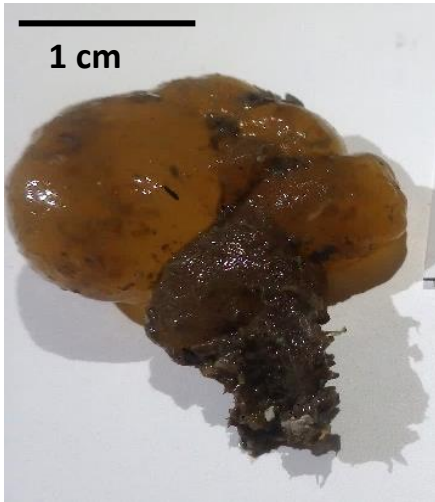


Distinct honey-comb pattern

Often in groups

On rocks or epizoic

*Distaplia occidentalis*



*Distaplia alaskensis*



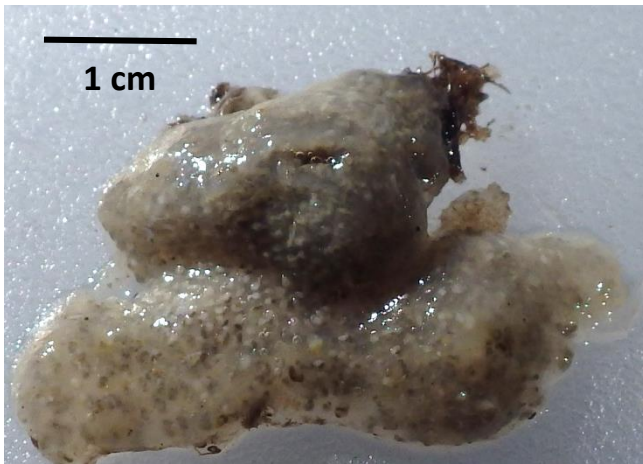
*Eudistoma parvum*



*Synoicum pulmonaria*



*Diplosoma listerianum*



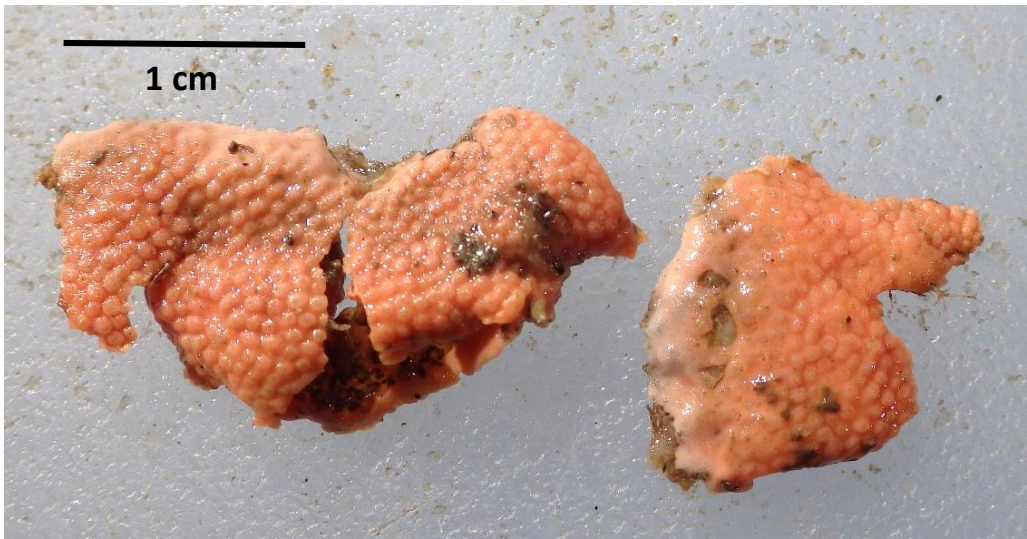
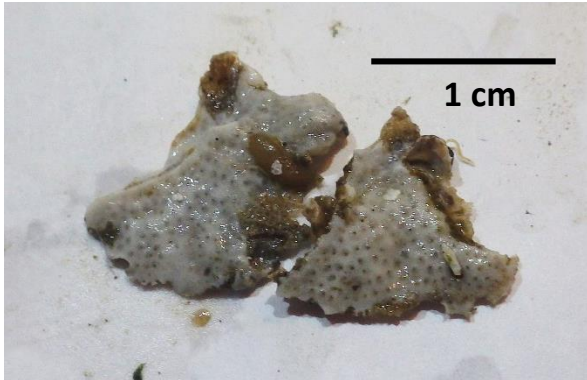
Encrusting, soft colony texture

*Polyclinum sp.*



Large, oval-shaped, colonial

*Didemnum albidum*



Usually white or grey, but can be pink

*Trididemnum* sp.



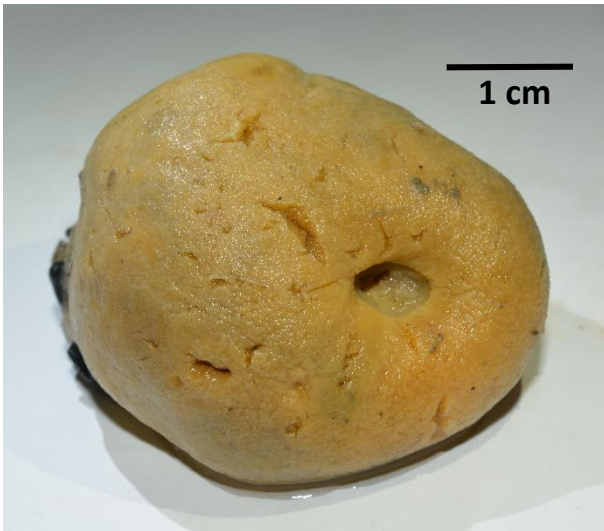
Ascidia grey or pink colonial, overgrowing other organisms



*Echinoclathria beringensis* (previously: *Phakellia*)



*Suberites luetkeni* (previously: *Choanites*)



*Semisuberites cribrosa* (previously: *Phakellia*)

Porifera



*Polymastia* sp



*Vulcanella* sp



*Haliclona* sp



*Halichondria* sp



*Stomphia* sp.

Actiniaria

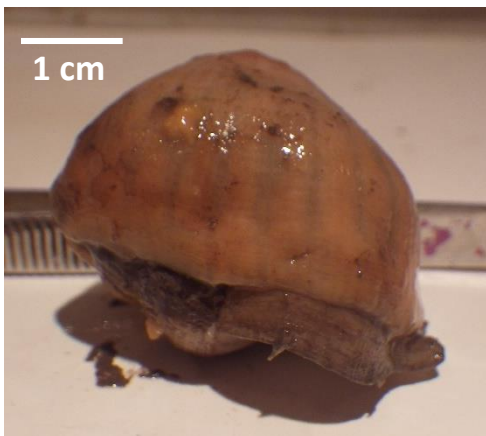


*Hormathia nodosa*



*Allantactis parasitica*

Always attached to snail shells, common in Beaufort but not the Chukchi



*Metridium* sp.



Zoanthidea



*Amphianthus sp.*



*Anthosactis janmayeni*



Flattened, but it can also be ball- or column-shaped

*Edwardsia sp*



Mostly buried in sediment

***Gersemia* spp. (Nephtheidae)**



Multiple species, some can only be distinguished microscopically

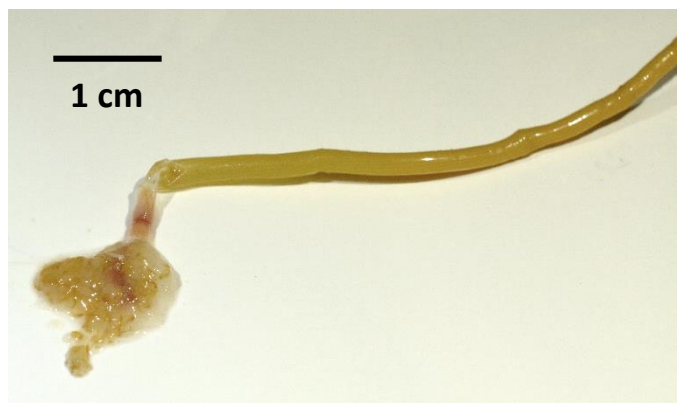
**Octocorallia**



***Umbellula* sp.**



***Tubularia* sp.**



*Lafoeina maxima*

Hydroidea



Look like pipe cleaners

# Bryozoa

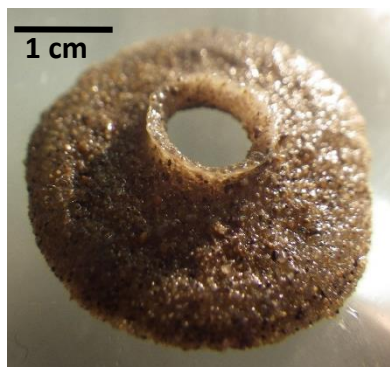
## *Alcyonidium gelatinosum*



Can form strings several meters long



## *Alcyonidium disciforme*



## *Eucratea loricata*



Greyish-colored dense bushes

Many others.....





Brachiopoda

