

Family MACELLOMENIIDAE Salvini-Plawen, 1978

Taxonomy

Genus **Macellomenia** Simroth, 1893
Macellomenia palifera Pruvot, 1890
Macellomenia aciculata Scheltema, 1999
Macellomenia adenota Salvini-Plawen, 2003
Macellomenia schanderi Kocot and Todt, 2014
Macellomenia morseae Kocot and Todt, 2014
Macellomenia profundorum Cobo, 2021

Quick ID Guide

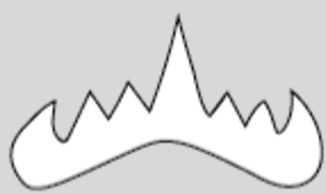
How to ID: Look for claviform sclerites* . White-yellowish animals, rough to furry.

Size: 1-7mm in body length.

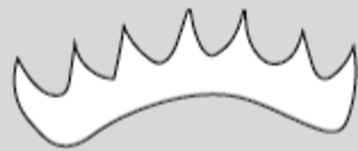
Potential Look-alikes: None. The sclerites are unique to Macellomeniidae.

Species Level Identification: Specific sclerites (different base shapes) to each species.

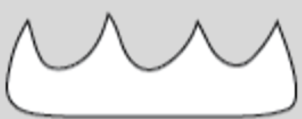
Further analysis of radula** is needed.



M. adenota



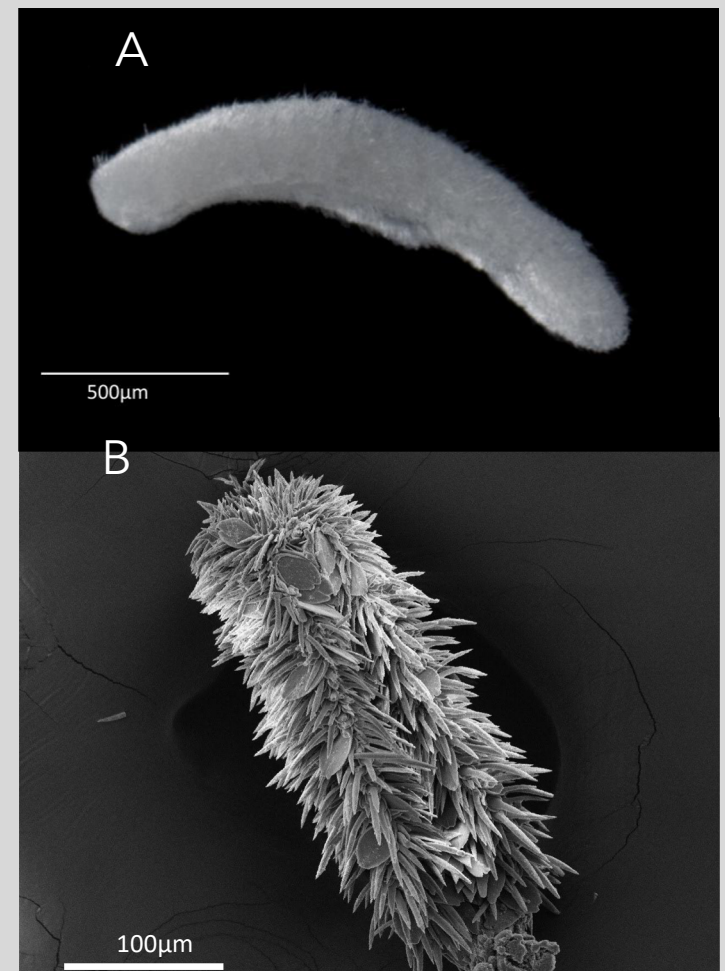
M. schanderi



M. aciculata



M. morseae

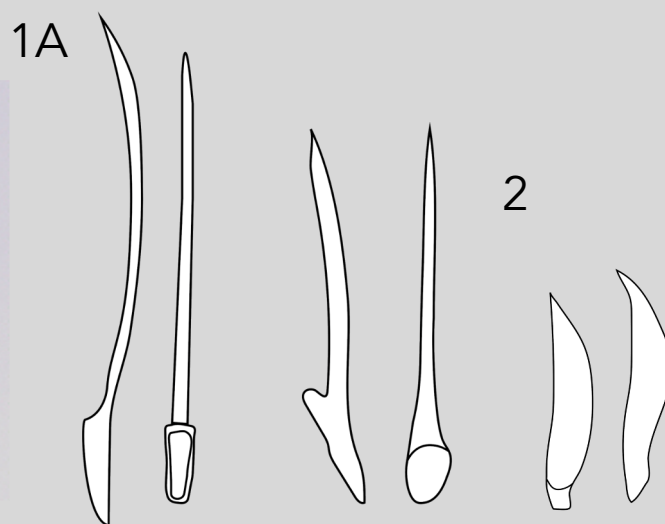


Macellomenia sp. (A)
M. schanderi SEM image (B)

**Different monoserial radulae found in the family



Light microscope image
of the sclerites of
Macellomenia sp.



Claviform sclerites, trapezoidal
base (1A) and oval base (1B).
Scales of the pedal groove (2).

***Scleritome:** Solid sclerites with a base (generally oval or trapezoidal in shape) extending to a spine, giving the appearance of a nail. This is best visualized through sclerite scrapings.

Distribution

Distribution: Irish Sea, West European Basin, Mediterranean, Pacific Northwest

Depth Range: 25-5400 m, with *M. adenota* at 2498 m and *M. profundorum* at 5400 m.

Macellomeniidae sp. (ZSM Mol20190712) 5120 m.