

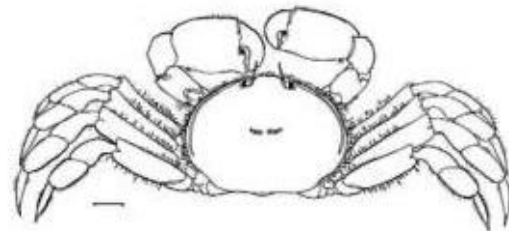
## *Scleroplax granulata* Rathbun, 1893

Nomenclature	
Phylum	Arthropoda
Class	Malacostraca
Order	Decapoda
Family	Pinnotheridae
Common Synonyms (S) Previous Names (PN)	

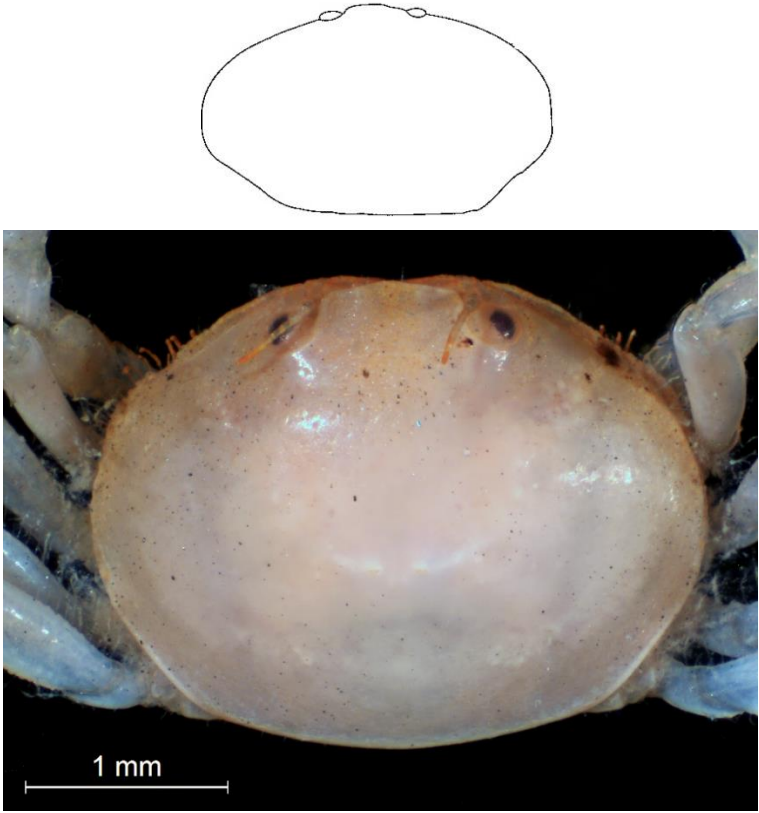
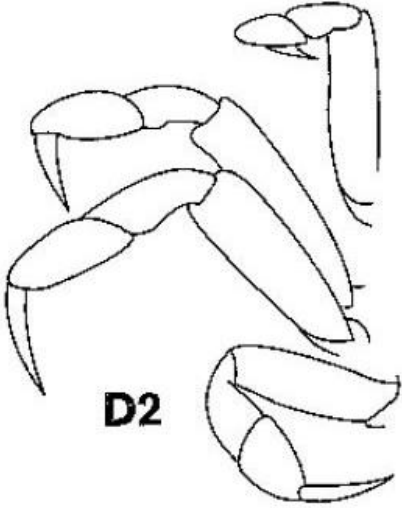


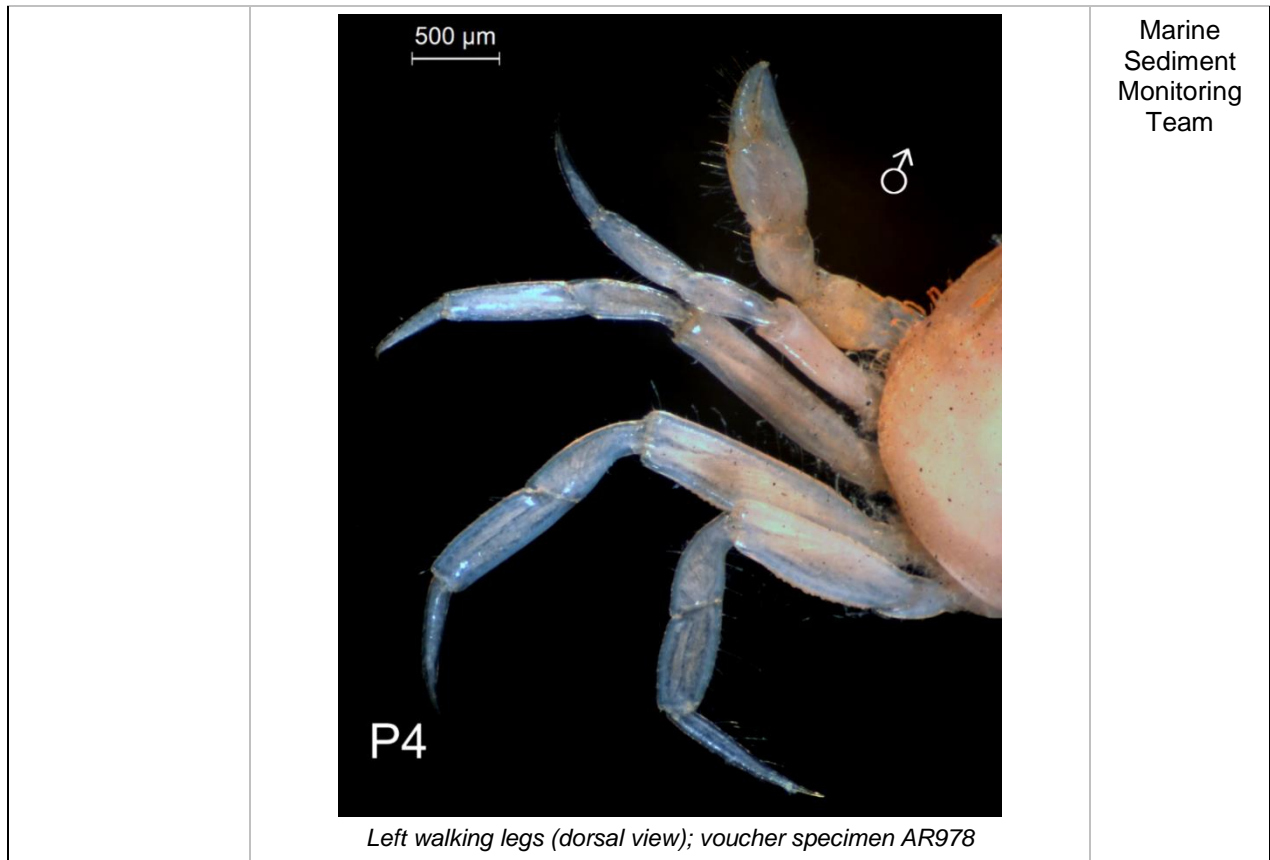
Distribution	
Type Locality	Ensenada, Baja California
Geographic Distribution	Porcher Island, British Columbia to Punta Abreojos, Baja California, México (Jensen 2014).
Habitat	Bays and harbors, symbiotic with echiuroid worm <i>Urechis caupo</i> , ghost shrimps <i>Neotrypaea californiensis</i> , <i>N. gigas</i> , <i>Upogebia pugettensis</i> , and <i>U. macginitieorum</i> ; intertidal zone on sandy mud flats in protected bays, to 13 m (Campos 2006). Also reported from the softshell clam <i>Mya arenaria</i> (Jensen 2014).

Description	
From Wicksten 2012 (unless otherwise noted)	
<b>Size:</b> Male carapace length about 3 mm, female to 6 mm.	
<b>Carapace:</b> Subpentagonal, hard, granulate anteriorly near margins; punctate elsewhere; front narrow, produced, slightly convex. Orbits nearly circular, eyestalk short, thick. Antennules almost transverse.	
<b>Mouthparts:</b> 3 <sup>rd</sup> maxilliped with a propodus that extends to the end of the dactylus (characteristic of genus; Campos 2006).	
<b>Chelipeds:</b> Chela of male swollen, heavy; much larger than in female. Dactyl curved, fixed finger with large tooth, fingers gaping.	
<b>Pereopods:</b> P2–5 slender, granulate. P4 longest, its segments narrow, flattened; dactyls slender, almost straight, nearly as long as dactyls.	
<b>Abdomen:</b> Male abdomen narrow, tapering gradually to broad terminal segment, female abdomen fringed with setae.	



## Diagnostic Characteristics

Diagnostic Characteristics (From Wicksten 2012)	Photo, Illustrations	Photo, Illustration Credit
<p>Carapace hard, much wider than long, dorsally convex and anteriorly granulate; lower anterolateral margin curving gradually into posterolateral margin</p>	 <p>The image contains two parts: a line drawing of a carapace showing its overall shape and the positions of the eyes, and a photograph of a real specimen. The photograph shows a light-colored, rounded carapace with a granulate texture. A scale bar in the bottom left of the photo indicates 1 mm.</p> <p><i>Carapace (dorsal view); voucher specimen AR978</i></p>	<p>Campos 2007, p. 643</p> <p>Marine Sediment Monitoring Team</p>
<p>Walking legs subequal (P4 slightly longer but not markedly so)</p>	 <p>The image is a line drawing of a crab's walking leg, specifically the second leg (D2). It shows the segments of the leg, including the exopod and endopod, and the claws at the tip.</p>	<p>Campos 2007, p. 643</p>



Related Species and Characteristic Differences	
Species Name	Diagnostic Characteristics
<i>Opisthopus transversus</i>	Carapace about as wide as long; pereopods 2-5 subequal (P3 longest); molluscan hosts <i>Note: This is a southern California species with a northern range of Monterey (Wicksten 2012).</i>

Comments

Literature
Campos, E. 2006. Systematics of the genus <i>Scleroplax</i> Rathbun, 1893 (Crustacea: Brachyura: Pinnotheridae). <i>Zootaxa</i> . 1344:33-41.
Campos, E. 2007. Key to Pinnotheridae. In: Carlton, J.T. (Ed). <i>The Light and Smith Manual. Intertidal Invertebrates from Central California to Oregon</i> . 4 <sup>th</sup> ed. Los Angeles, CA: University of California Press. pp. 632-655. (p. 643-644)

Garth, J.S. and D.P. Abbott. Brachyura: The True Crabs. P. 595-630. *In: Intertidal invertebrates of California*. Morris, R.H., Abbott, D.P. and E.C. Haderlie (Eds.). Stanford University Press, Stanford, CA. (p. 618)

Jensen, G.C. 2014. *Crabs and shrimps of the Pacific coast. A guide to shallow-water decapods from Southeastern Alaska to the Gulf of Mexico*. MolaMarine, Bremerton, WA. 240 pp.

Rathbun, M.J. 1893. Scientific results of explorations by the U. S. fish commission steamer *Albatross*. XXIV. Descriptions of new genera and species of crabs from the west coast of North America and the Sandwich Islands. *Proceedings of the U. S. National Museum* 16:223-260. (p. 250-251)

Rathbun, M.J. 1918. The grapsoid crabs of North America. *Bulletin of the U.S. National Museum* 97:1-444, Plates 1-159, figs. 1-172. (p. 171-172)

Wicksten, M.K. 2012. Decapod Crustacea of the Californian and Oregonian Zoogeographic Provinces. *Zootaxa* 3371. Magnolia Press. 307 pp.

More Information		
<p>More information about Puget Sound benthic invertebrates is available at:  <a href="http://www.ecy.wa.gov/programs/eap/psamp/index.htm">http://www.ecy.wa.gov/programs/eap/psamp/index.htm</a></p>	<p>Prepared by Dany Burgess (Ecology) and Julianne Ruffner (Ecology); reviewed by Jeff Cordell (UW – Seattle). This document is available on the Department of Ecology’s website at <a href="https://fortress.wa.gov/ecy/publications/SummaryPages/1603212.html">https://fortress.wa.gov/ecy/publications/SummaryPages/1603212.html</a></p>	<p>If you need this document in a format for the visually impaired, call (360) 407-6764. Persons with hearing loss can call 711 for Washington Relay Service. Persons with a speech disability can call (877) 833-6341.</p>