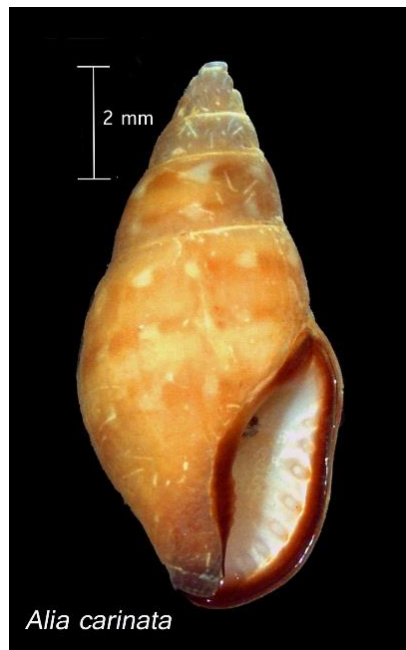




Alia carinata (Hinds, 1844)

Nomenclature	
Phylum	Mollusca
Class	Gastropoda
Order	Neogastropoda
Family	Columbellidae
Common Synonyms (S) Previous Names (PN)	<i>Columbella californiana</i> , <i>Columbella carinata</i> , <i>Mitrella</i> <i>carinata</i> , <i>Nitidella carinata</i>



Distribution	
Type Locality	
Geographic Distribution	Southern Alaska to Baja California. Depths for Ecology records: 1 – 22 m.

Description
Length to 10mm; protoconch multispiral- usually eroded; shape oval-fusiform; shell thick; periostracum fine and glossy; whorls slightly convex; shoulder of the body whorl varying from smooth to strongly carinate (keeled); sculpture smooth; color highly variable, usually yellow- brown to dark brown, sometimes with white and darker brown mottling; carina/keel usually lighter in color than the rest of shell; aperture elongated with pinkish –white interior; outer lip is dark brown and sinuous with strong elongated teeth within; canal with incised spiral lines

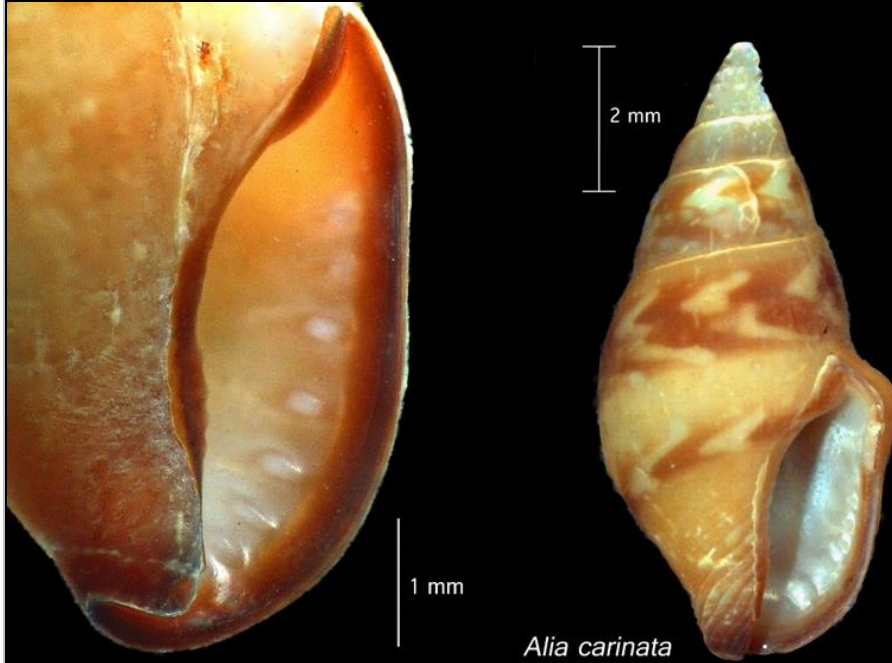
Related Species and Characteristic Differences	
Species Name	Diagnostic Characteristics
<i>Astiris gausapata</i>	Lacking swollen shoulder keel on final whorl; outer lip weakly lirate; sculpture has weak/microscopic axial striations; paucispiral protoconch- usually eroded

Diagnostic Characteristics

Diagnostic Characteristics

Photos by Marine Sediment Monitoring Team

outer lip dark brown, strongly lirate, and sinuous



swollen shoulder keel on final whorl (highly variable amongst individual specimens)



Literature

- Harbo, R.M. 1997. Shells & Shellfish of the Pacific Northwest A Field Guide. Madeira Park, BC: Harbor Publishing. pp. 97, 216.
- Hinds, R.B. 1844-45. The zoology of the voyage of H.M.S. *Sulphur*, under the command of Capt. Sir Edward Belcher...during 1836-1842. London, Mollusca, 1-48 [1844], 49-72 [1845], pls. 1-25. p. 39.
- McLean, J.H. 2007. Gastropoda In: Carlton, J. T., Eds. *The Light and Smith Manual. Intertidal Invertebrates from Central California to Oregon*. 4th ed. Los Angeles, CA: University of California Press. pp. 743-745.
- McLean, J.H. 1996. The Prosobranchia. In: Scott, P.H., Blake, J.A., Lissner, A.L. Eds. *Taxonomic Atlas of the Benthic Fauna of the Santa Maria Basin and Western Santa Barbara Channel*. Volume 9. ISBN 0-93649-14-X. Santa Barbara: Santa Barbara Museum of Natural History. The Mollusca Part 2 The Gastropoda. pp. 109, 155.
- McLean, J.H. 1969. Marine Shells of Southern California. Los Angeles County Museum of Natural History. Science Series 24, Zoology No. 11. p. 48.

More Information

More information about Puget Sound benthic invertebrates is available at:
<http://www.ecy.wa.gov/programs/eap/psamp/index.htm>

Prepared by Angela Eagleston (Ecology); reviewed by Susan Weeks (Oikos). This document is available on the Department of Ecology's website at <https://fortress.wa.gov/ecy/publications/SummaryPages/1703302.html>

If you need this document in a format for the visually impaired, call (360) 407-6764. Persons with hearing loss can call 711 for Washington Relay Service. Persons with a speech disability can call (877) 833-6341.