



Magelona longicornis Johnson, 1901

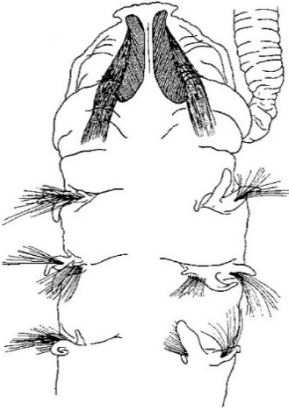

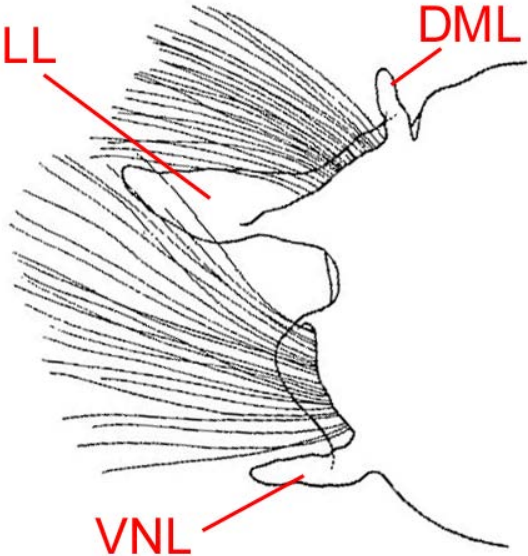
Nomenclature	
Phylum	Annelida
Class	Polychaeta
Order	Spionida
Family	Magelonidae
Synonyms	<i>Magelona alata</i> Reish, 1965 <i>Magelona japonica</i> Berkeley and Berkeley 1950



Distribution	
Type Locality	West Seattle, Puget Sound, WA
Geographic Distribution	Puget Sound, Washington; Vancouver Island, British Columbia; Bering and Chukchi Seas; Japan
Habitat	Intertidal to 197 m

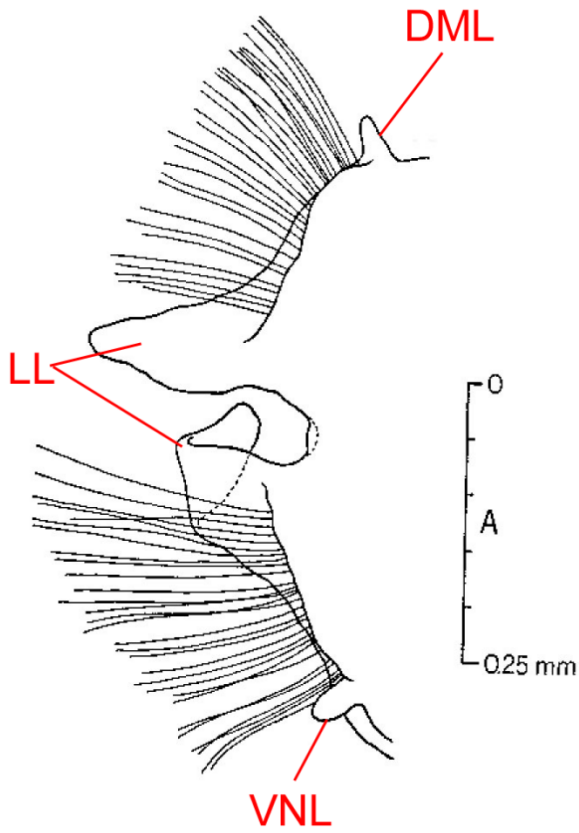
Description
From Jones 1971, pp. 1449-1453
Size/Color: to 1 mm wide anteriorly. Complete Puget Sound specimens to 47 mm long. Color in alcohol yellow to light brown, with areas of pink stain when using rose bengal (see comments section below).
Prostomium: Broader than long (approximately 2:1), flattened; peristomial region enlarged. Frontal horns well-developed. Palps papillated, extending as far as chaetiger 20 (may be missing from preserved specimens).
Parapodia: Similar on first 8 chaetigers, with slender prechaetal dorsal medial lobe and a narrowly lanceolate postchaetal lateral lamella in the notopodia; ventral neuropodial lobe shortening to 8 th chaetiger. 9 th chaetiger with subequal, elongate, subtriangular postchaetal lateral lamellae, a dorsal medial lobe, and a ventral prechaetal neuropodial (= medial) lobe. Parapodia from the 10 th chaetiger on with elongate lateral lamellae and small dorsal and ventral medial lobes. Lateral pouches absent.
Chaetae: Anterior chaetae bilimbate, although may appear unilimbate. 9 th chaetiger with chaetae similar to those of the preceding segments. 10 th chaetiger on with bidentate hooded hooks arranged in a single series.
Pygidium: Simple, without anal cirri.

Diagnostic Characteristics

Diagnostic Characteristics (Hobson and Banse 1981)	Photo, Illustrations	Photo, Illustration Credit
<p>Prostomium with anterior horns <i>(indicated by yellow arrow, right)</i></p> <p><i>Note: One or both palps may be missing from preserved specimens.</i></p>	 <p><i>Dorsal view of anterior end, left palp missing</i></p>  <p><i>Anterior body region (dorsal view); specimen from 2014 PSEMP Long-term Station 40 Rep 1</i></p>	<p>Jones 1971, pp. 1450-1451 (LEFT)</p> <p>Marine Sediment Monitoring Team (RIGHT)</p>
<p>Parapodia 1-8 with notopodial lateral lamella</p>	 <p><i>Anterior view of right 8th chaetiger; DML – dorsal medial lobe, LL – lateral lamella, VNL – ventral neuropodial (=medial) lobe</i></p>	<p>Modified from Jones 1971, p. 1451, figure 35</p>

Parapodium 9 with dorsal and ventral medial lobes and dorsal and ventral lamellae

Parapodium 9, chaetae same as those of chaetigers 1-8



Modified from Jones 1971, p. 1451, figure 36

Anterior view of right 9th chaetiger; DML – dorsal medial lobe, LL – lateral lamella, VNL – ventral neuropodial (= medial) lobe

Noto- and neuropodial hooded hooks of posterior region bidentate, in single series



ABOVE: Neuropodial hooded hook from 10th chaetiger

Single row of neuropodial hooded hooks; voucher specimen AN1366

Jones 1971, p. 1451, figure 43 (LEFT)

Marine Sediment Monitoring Team (RIGHT)

Related Species and Characteristic Differences

Species Name	Diagnostic Characteristics
<i>M. berkeleyi</i> Jones 1971	Only ventral neuropodial (= medial) lobe on chaetiger 9; hooded hooks of posterior region tridentate, in 2 series.
<i>M. hobsonae</i> Jones 1978	Prostomial horns absent; chaetiger 9 with special chaetae not present in chaetigers 1-8 (Hobson and Banse 1981).

Comments

M. longicornis often stains vivid pink in rose bengal, with pigment concentrated most heavily on the dorsal surface of the first few thoracic chaetigers, laterally on abdominal chaetigers, and on the palps.

Literature

- Johnson, Herbert Parlin. 1901. The Polychaeta of the Puget Sound region. *Proceedings of the Boston Society for Natural History*, 29 (18): 381-437.
- Jones, Meredith L. 1971. *Magelona berkeleyi* n.sp. from Puget Sound (Annelida: Polychaeta), with a further redescription of *Magelona longicornis* Johnson and a consideration of recently described species of *Magelona*. *Journal of the Fisheries Research Board of Canada*, 28(10): 1445-1454.
- Jones, Meredith L. 1978. Three new species of *Magelona* (Annelida, Polychaeta) and a redescription of *Magelona pitelkai* Hartman. *Proc. Biol. Soc. Wash.* 91(1): 336-363.
- Hobson, Katharine D. & Karl Banse. 1981. *Sedentariate and archiannelid polychaetes of British Columbia and Washington*. Department of Fisheries and Oceans. Ottawa. 144 pp. (Pp. 46-48)

More Information

<p>To learn more about our Voucher Sheet project, please visit: http://ecologywa.blogspot.com/2017/03/eyes-under-puget-sound-voucher-sheet.html</p> <p>More information on Puget Sound marine monitoring is available on our website, including a full list of published benthic invertebrate voucher sheets.</p>	<p>Prepared by Dany Burgess (Ecology's Marine Sediment Monitoring Team); reviewed by Tara Macdonald and Hiroki Tomoe (Biologica). This document is available on the Department of Ecology's website at https://fortress.wa.gov/ecy/publications/SummaryPages/1803378.html</p>	<p>If you need this document in a format for the visually impaired, call (360) 407-6764. Persons with hearing loss can call 711 for Washington Relay Service. Persons with a speech disability can call (877) 833-6341.</p>
---	--	---