

***Tellimya Tehuelcha*, New Species: First Record of *Tellimya*
Brown, 1827, In South America (Bivalvia: Lasaeidae), with Notes
on Life History and Reproduction**

Author(s): Diego G. Zelaya & Cristián Ituarte

Source: *Malacologia*, 55(1):173-182.

Published By: Institute of Malacology

<https://doi.org/10.4002/040.055.0112>

URL: <http://www.bioone.org/doi/full/10.4002/040.055.0112>

BioOne (www.bioone.org) is a nonprofit, online aggregation of core research in the biological, ecological, and environmental sciences. BioOne provides a sustainable online platform for over 170 journals and books published by nonprofit societies, associations, museums, institutions, and presses.

Your use of this PDF, the BioOne Web site, and all posted and associated content indicates your acceptance of BioOne's Terms of Use, available at www.bioone.org/page/terms_of_use.

Usage of BioOne content is strictly limited to personal, educational, and non-commercial use. Commercial inquiries or rights and permissions requests should be directed to the individual publisher as copyright holder.

TELLIMYA TEHUELCHA, NEW SPECIES: FIRST RECORD OF
TELLIMYA BROWN, 1827, IN SOUTH AMERICA (BIVALVIA: LASAEIDAE),
WITH NOTES ON LIFE HISTORY AND REPRODUCTION

Diego G. Zelaya^{1, 2*} & Cristián Ituarte³

INTRODUCTION

Galeommatoids are small bivalves usually living as epibionts on other invertebrates. Among them, a number of genera, such as *Waldo* Nicol, 1966, *Scioberetia* F. Bernard, 1895, *Montacuta* Turton, 1822, *Tellimya* Brown, 1827, *Brachiomya* Jespersen, Lützen & Nielsen, 2004, and *Montacutella* Jespersen, Lützen & Nielsen, 2004, are associated with sea urchins. Only *Scioberetia* and *Waldo* were reported from the southern tip of South America (F. Bernard, 1895a–c; Zelaya & Ituarte, 2002).

Tellimya was proposed to include *Mya suborbicularis* Montagu, 1803, *Ligula substriata* Montagu, 1808, *Mya ferruginosa* Montagu, 1808, *Tellimya lactea* Brown, 1827, *T. tenuis* Brown, 1827, *T. elliptica* Brown, 1827 (based on *Mya ferruginosa* Montagu, 1808, and an objective synonym thereof), *T. glabrum* Brown, 1827, and *T. ovata* Brown, 1827. Subsequently, Gray (1847) designated *Mya ferruginosa* as its type species. Pérès (1937), Pophan (1940), Deroux (1961) and Oldfield (1961) provided information on the gross anatomy and functional morphology of the type species, and Kamenev (2008) clarified the details of the hinge morphology of the genus. *Tellimya* has sometimes been regarded as a subgenus of *Montacuta* (e.g., Pelseneer, 1925; Ponder, 1968), but currently regarded as a full genus (e.g., Chavan, 1969; Aartsen, 1997; Marshall, 2002; Kamenev, 2008).

In the present paper, a new species of *Tellimya* from the Magellan Region, which constitutes the first record of the genus in South America, is described.

MATERIALS AND METHODS

The specimens described here were obtained at irregular intervals between March 2009 and May 2010 from the intertidal zone at Puerto

Deseado, Santa Cruz Province, Argentina (Fig. 1) attached to irregular echinoids of the genus *Abatus*. Echinoids were hand collected during maximum low tides and transported to the laboratory for inspection under stereoscopic microscope. The number of bivalves and their position on the echinoid test were recorded. The maximum diameter of echinoids was measured. Length (L: maximum anteroposterior distance), height (H: maximum dorsoventral distance perpendicular to L) and width (W: maximum distance across valves) of bivalves were measured. Mean values and standard deviation (SD) for the H/L and W/L ratios were calculated. Specimens for anatomy were fixed and decalcified in a 10% formalin solution with 5% acetic acid, and dissected under a stereoscopic microscope. Specimens for histology were fixed in Bouin's solution, dehydrated, embedded in Histoiresin (Leica®) and sectioned (3.5 µm thick). Sections were stained with haematoxylin and eosin. Shell morphology was studied and illustrated with scanning electron microscopy.

Voucher specimens were deposited in the collections of Invertebrate Zoology at Museo Argentino de Ciencias Naturales (MACN) and Museo de La Plata (MLP).

SYSTEMATICS

Tellimya tehuelcha, n. sp.
Figs. 2–33

Type Locality: 47°45'S, 65°52'W, Puerto Deseado, Santa Cruz Province, Argentina.

Type Material: Holotype (MLP 13396) and 20 paratypes (10 paratypes, MACN-In 39321; 10 paratypes MLP 13397).

Additional Material: Histological sections of seven specimens (MACN-In 39320).

¹Departamento Biodiversidad y Biología Experimental, Facultad de Ciencias Exactas y Naturales, UBA, Argentina.

²División Zoología Invertebrados, Museo de La Plata, Paseo del Bosque s/n, 1900, La Plata, Argentina.

³Museo Argentino de Ciencias Naturales, Ángel Gallardo 460, Ciudad de Buenos Aires, Argentina.

*Corresponding author: dzelaya@fcnym.unlp.edu.ar



FIG. 1. Locality map: Latitude ($^{\circ}$ S), longitude ($^{\circ}$ W).

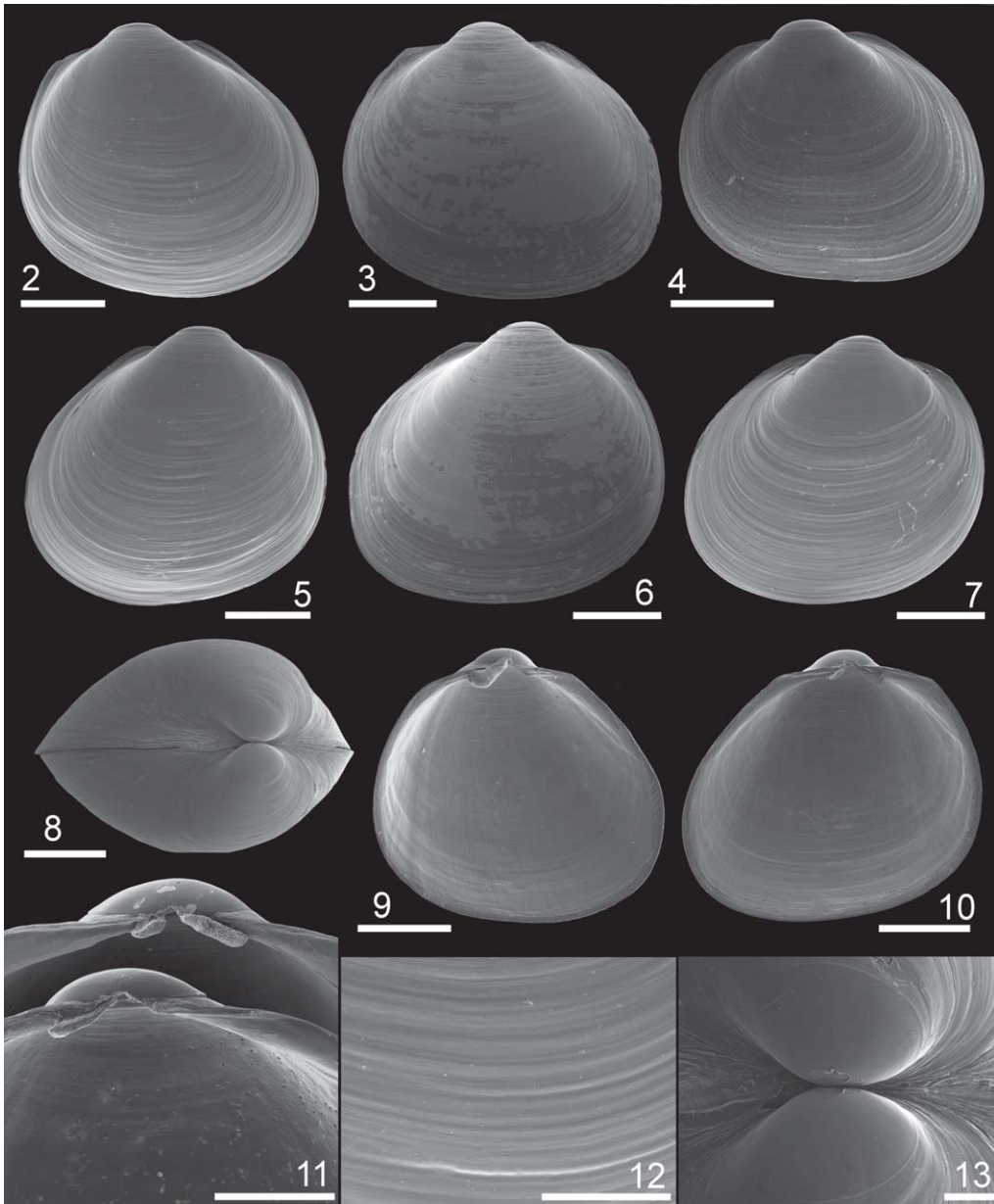
Distribution: Only known from the type locality (Fig. 1).

Etymology: The species name refers to the Tehuelches, one of the aboriginal people inhabiting vast regions of southeastern Patagonia.

Diagnosis: Shell high, trapezoidal, posteriorly truncate, inflated, sculptured only with well-marked growth lines. Anterior right cardinal

tooth short. Protoconch large (about $700\ \mu\text{m}$ diameter). A single demibranch, with up to 50 filaments with extended and anastomosed adfrontal portions, present. Mantle border expanded anteriorly to delimit an inhalant area; inner fold with small papillae exteriorly visible in live specimens.

Description: Shell solid, small (maximum observed $L = 5.9\ \text{mm}$), markedly trapezoidal in larger specimens ($H / L = 0.86 \pm 0.03$; $n =$



FIGS. 2–13. *Tellimya tehuelcha*, n. sp., shell morphology. FIGS. 2, 5: Holotype (MLP 13396); FIGS. 3, 4, 6–13: Paratypes (MLP 13397); FIGS. 2–8: Outer view. FIGS. 2–4: Right valve. FIGS. 5–7: Left valve. FIG. 8: Dorsal view; FIGS. 9–11: Inner views. FIG. 9: Left valve. FIG. 10: Right valve. FIG. 11: Details of right (upper) and left (lower) hinge plates; FIG. 12: Detail of shell sculpture; FIG. 13: Protoconch. Scale bars: Figs. 2–10 = 1 mm; Figs. 11, 12 = 500 μ m; Fig. 13 = 200 μ m.

10) (Figs. 2, 3, 5, 6, 9, 10), obliquely ovate in smaller specimens (Figs. 4, 7); inflated ($W/L = 0.61 \pm 0.03$; $n = 10$) (Fig. 8), equivalve, inequilateral. Anterior end rounded, projecting downward; posterior end truncate (Figs. 2–7). Dorsal margin short, nearly straight, horizontal. Posterior part of dorsal margin slightly sloping, forming a marked angle with posterior shell margin. Dorsal part of anterior margin long, suberect, sloping markedly; ventral part of anterior margin rounded, continuous with ventral margin. Ventral margin widely curved. Posterior margin widely arcuate or nearly straight, almost vertical to slightly oblique (Figs. 2–7). Beaks prominent, inflated, relatively low, posteriorly displaced, orthogyrate. Protoconch ovate, smooth, about 700 μm in diameter, well discernible from teleoconch (Fig. 13).

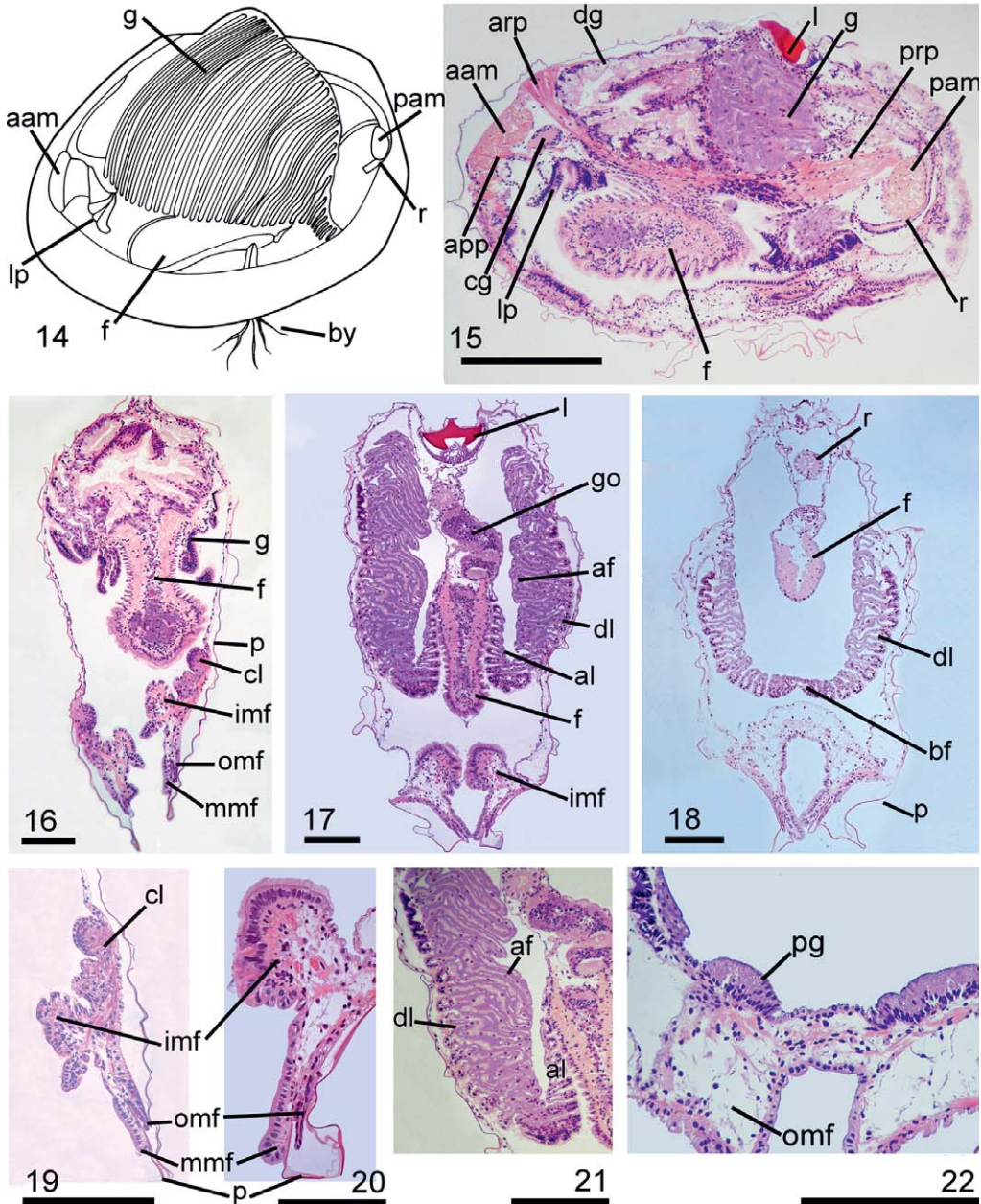
Shell surface white, brilliant, sculptured with well-marked, irregularly distributed growth lines (Fig. 12); radial striation absent; periostracum thick, translucent. Hinge plate interrupted behind beaks by a deep triangular pit (Fig. 11). Left valve with only one, anterior cardinal tooth that is slender, elongate, nearly horizontal, straight; right valve: only one anterior cardinal tooth that is short, oblique, moderately solid, cuneiform, slightly bent upward, with sharp cusp (Figs. 9–11). Resilifer short, wide, deeply notched in the cardinal platform, located just in front of posterior part of hinge plate. Resilium large, strong, posterior to beak, butterfly-shaped in transverse section, non-calcified (Figs. 9, 17). Adductor muscle scars and pallial line hardly visible.

Anatomy: Animal white. Mantle margin relatively wide, not reflected over shell. Anterior half of mantle margin with a ciliated lobe on inside of inner mantle fold (Figs. 16, 19); posterior half of inner fold of mantle border heavily ciliated (Figs. 17, 20). Pallial glands developed on inner surface at posterior part of presiphonal suture (Fig. 22). Pedal opening long, extending for two-thirds of mantle margin length, anteriorly differentiated into a short, frilled-edge, inhalant region that can be extended beyond shell margin (Fig. 24). Short pre-siphonal suture (Fig. 22) and minute exhalant siphon, present. This "siphon" does not extend beyond shell margin in living specimens. Small papillae on middle mantle fold, present (Figs. 24, 25). Transverse section of anterior and posterior adductor muscles small, ovate, the anterior larger (Figs. 14, 15). Labial palps triangular,

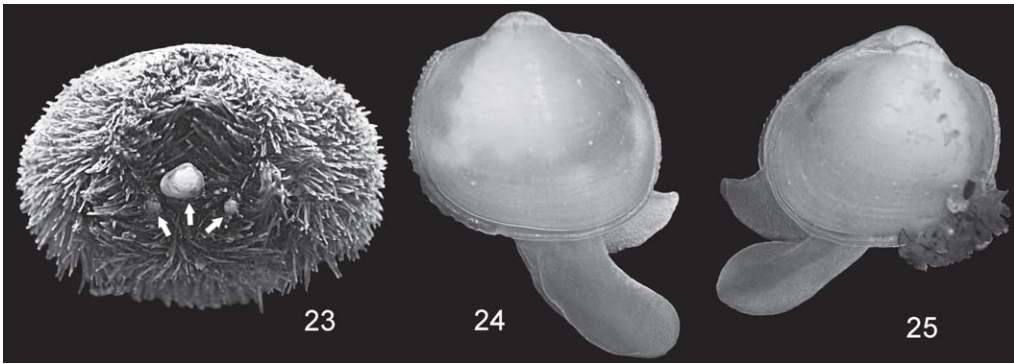
the outer, the larger with five sorting ridges; inner with 2–3 sorting ridges (Figs. 14, 15). Only inner demibranch present; triangular in outline, with up to 50 filaments with very long adfrontal extensions (Figs. 14, 21); not infrequently, adfrontal extensions of contiguous filaments anastomose. Gill axis almost vertical. Ascending lamellae two-thirds length of descending lamellae (Fig. 17). In lower part of gill, adfrontal extensions of descending and ascending parts of several filaments united, connecting outer and inner lamellae (Fig. 32). Upper end of ascending lamellae fused to visceral mass (Fig. 17); behind visceral mass, posterior ends of left and right ascending lamellae fused, and upper edges of descending lamellae fused to inner mantle epithelium (Fig. 18). Foot ciliated, cylindrical, its base able to form a creeping sole, with slightly marked posterior heel (Figs. 14, 15, 25). Byssal groove running mid-ventrally from heel to just behind anterior tip. Byssus gland large, persistent in adults, opening into a relatively long byssus groove, formed by left and right halves. Byssus composed of a single thread at base, distally split into several very thin treads (Fig. 14). Anterior and posterior retractor pedal muscles large, strong; anterior pedal protractor delicate, crossing anterior adductor muscle (Fig. 15); byssus retractor muscle not well defined.

Biological Observations: *Tellimya tehuelcha* lives as an epibiont on the heart urchin *Abatus cavernosus* (Philippi, 1845), particularly in muddy sand, where it was found attached by its byssus exclusively at the urchin's anal region (Fig. 23). Echinoids of 20.9 to 39.1 mm length were found to host these bivalves (examined range: 4.95–39.1 mm). The bivalve did not show a differential axis of orientation with respect to the echinoid oral-aboral axis. Specimens of *Tellimya tehuelcha* were found all year round on echinoids. These observations, and the fact that no free living specimens were found when sieving the sediments where echinoids were present, support the assumption that *Tellimya tehuelcha* develops its entire life history on *Abatus cavernosus*. The number of bivalves per echinoid varied between 1 and 10 (Fig. 26); when more than one specimen was present on a single host, only one large specimen (over 2 mm length) was present; the remaining specimens usually were juveniles.

A total of 32 specimens (1.25–3.4 mm length) were studied histologically. *Tellimya*



FIGS. 14–22. *Tellimyia tehuelcha*, n. sp., anatomy. FIG. 14: Gross anatomy (left side); FIG. 15: Sagittal section; FIGS. 16–22: Transverse sections showing details of demibranch, demibranch fusion, and mantle border. FIG. 16: Anterior section; FIG. 17: Median section; FIG. 18: Posterior section showing fusion of demibranchs and posterior mantle border; FIG. 19: Detail of the anterior portion of the mantle border; FIG. 20: Detail of the median portion of the mantle border; FIG. 21: Detail of demibranch showing the adfrontal extension of filaments and the fusion of ascending lamella to the visceral mass; FIG. 22: Detail of posterior fusion of the mantle border at the level of presiphonal suture and pallial glands. Scale bars: Fig. 15 = 500 μ m; Figs. 16–18 = 200 μ m; Figs. 19, 21, 22 = 300 μ m; Fig. 20 = 150 μ m. Abbreviations - aam: anterior adductor muscle; af: adfrontal extensions of branchial filaments; al: ascending lamella; app: anterior protractor pedis; arp: anterior retractor pedis; bf: branchial fusion; by: byssus; cg: cerebral ganglion; cl: ciliated lobe; dg: digestive gland; dl: descending lamella; g: gill; go: gonad; f: foot; imf: inner mantle fold; l: ligament; lp: labial palp; mmf: middle mantle fold; omf: outer mantle fold; p: periostracum; pam: posterior adductor muscle; pg: pallial glands; prp: posterior retractor pedis; r: rectum.



FIGS. 23–25. *Tellimya tehuelcha*, n. sp., living specimens. FIG. 23: Bivalves on the echinoid (arrows indicate the exact position of the bivalves); FIG. 24: Right side; FIG. 25: Left side.

tehuelcha is a peculiar simultaneous hermaphrodite, with an initial stage of gonadal development when, despite their reduced extension in the visceral mass, male tissues are preponderant, and a subsequent stage when female tissues are dominant (Fig. 27). Specimens at sizes below 1.8–2 mm in length, showed acini containing only early male germ cells: spermatogonia and spermatocytes I, the latter with clear figures corresponding to the first meiotic prophase (Fig. 28). In these specimens, male tissues are localized mainly at the posterodorsal region of the visceral mass.

In specimens larger than 2 mm length, female germ cells progressively become evident (Figs. 27, 29). As vitellogenesis proceeds, a reduced number spermatocytes remain as small groups of germ cells blocked throughout vitellogenesis at the stage of spermatocyte I. Seminal receptacles were not observed. Vitellogenesis starts early, when oocytes reach about 80 µm diameter (Fig. 30). The diameter of ripe oocytes is about 350–400 µm (Fig. 31). Gonads in late vitellogenic stage showed male germ cells still at the spermatocyte I stage; specimens

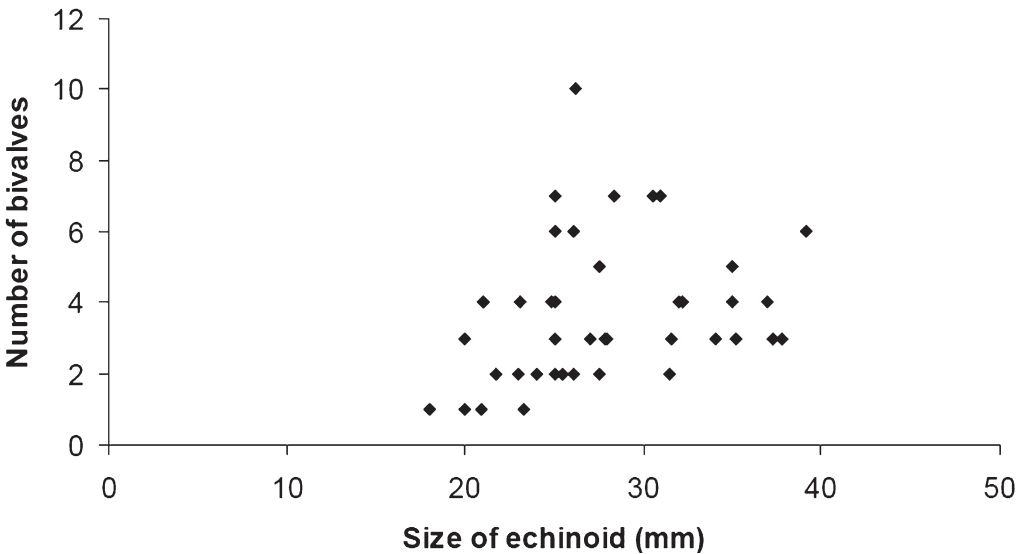
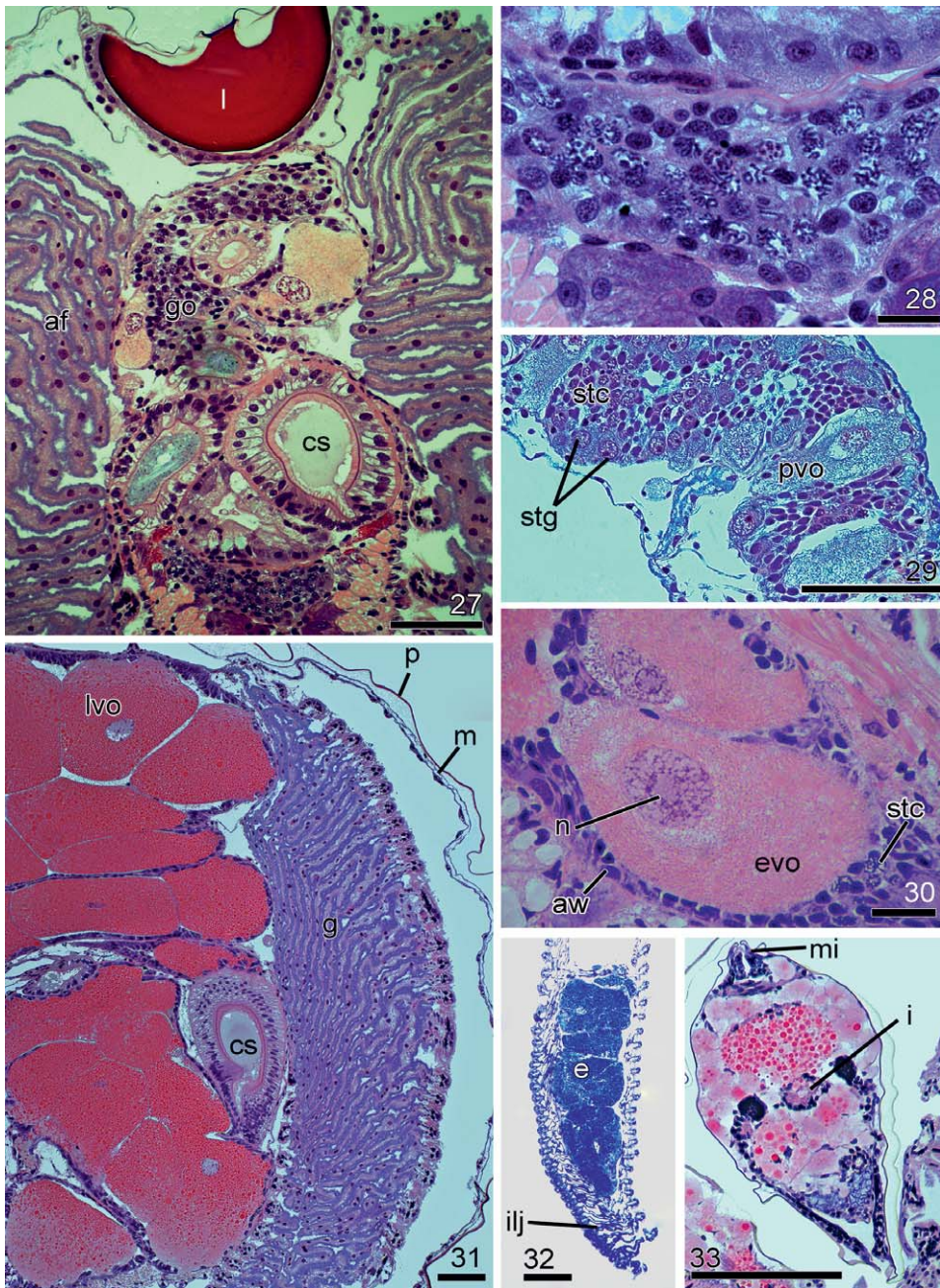


FIG. 26. Relationship between echinoid size and number of bivalves.



FIGS. 27–33. *Tellimya tehuelcha*, n. sp., histological sections of the visceral mass and embryos. FIG. 27: Hermaphrodite gonad of a 2.4 mm length specimen; FIG. 28: Detail of spermatocytes showing characteristic figures of first meiotic prophase; FIG. 29: Detail of spermatocytes I and pre-vitellogenic oocytes; FIG. 30: Detail of early vitellogenic oocytes; FIG. 31: Oocytes in late vitellogenic stage; FIG. 32: Early developing embryos within the inner demibranch; FIG. 33: Late developing embryo. Scale bars: Figs. 27, 31 = 100 μ m; Fig. 28 = 20 μ m; Fig. 29 = 50 μ m; Fig. 30 = 30 μ m; Figs. 32, 33 = 200 μ m. Abbreviations - af: adfrontal extension of branchial filaments; cs: crystalline stylet; e: embryos; evo: early pre-vitellogenic oocyte; aw: acinus wall; g: gill; go: gonad; i: intestine; ilj: interlamellar junction; l: ligament; lvo: late vitellogenic oocytes; m: mantle; mi: mantle isthmus; n: nucleus; p: periostracum; pvo: pre-vitellogenic oocyte; stg: spermatogonia; stc: spermatocytes.

ready to spawn showed few mature sperms intermingled among female acini.

Released ova are retained in both inner demibranchs (Fig. 32), where embryos develop. Up to 33 embryos per demibranch were found in a specimen of 3.3 mm in length. Brooding embryos remain free within the branchial space of the maternal individuals until complete their development and being released as miniature juveniles (about 700 μm length) (Fig. 33).

DISCUSSION

Tellimya tehuelcha resembles in general shell shape and gross anatomy *Tellimya ferruginosa*, the type species of the genus; both species have only one (the inner) demibranch, with anastomosing gill filaments; mantle margin, with papillae, not covering the outer shell surface; foot with anterior and posterior retractor muscles and pedal protractor, but lacking of byssus retractor muscle; absence of seminal receptacles; shell with posteriorly displaced beaks; hinge plate interrupted below beaks, with only one, anterior, obliquely directed cardinal tooth in the right valve, and the left valve with only a long, slender tooth parallel to the dorsal margin, anterior to the beak. These characters support the cogenetic status of the two species.

Tellimya tehuelcha differs from *T. ferruginosa* in having a less projecting anterior end and more markedly truncate posterior margin, resulting, in adult specimens, in a markedly trapezoidal (instead ovate) shell outline. The protoconch is larger in *T. tehuelcha* (about 700 μm) than in *T. ferruginosa* (410 μm). *Tellimya ferruginosa* has, in addition to papillae on the mantle margin, two "tentacles", dorsal and ventral to the exhalant siphon, which are absent in *T. tehuelcha*. Deroux (1961) reported for *T. ferruginosa* an external part of the ligament, which is not present in *T. tehuelcha*, where the ligament is completely internal. According to Deroux (1961), *T. ferruginosa* has the ascending lamella of inner demibranch nearly as long as the descending lamella, a condition quite different from that observed in *T. tehuelcha*.

Tellimya tenella (Lovén, 1846) has a flat, oval shell, with convex dorsal margin, faint microscopic radial striae, and very narrow hinge plate. This species, as *T. ferruginosa*, has a smaller protoconch than *T. tehuelcha* (about 420 μm in diameter) and two large siphonal tentacles, one above and the other below the exhalant siphon.

Tellimya semirubra (Gaglini, 1992) differs from *T. tehuelcha* in having a triangular shell outline, and *Tellimya vitrea vitrea* (Hedley, 1907), *Tellimya benthicola* (Dell, 1956), *Tellimya reinga* (Crozier, 1966), and *Tellimya vitrea aupouria* Ponder, 1968, differ from *T. tehuelcha* in having elongate oval shell outlines, sculptured with radial riblets. *Tellimya vitrea aupouria* has in addition a protoconch smaller than that in *T. tehuelcha* (about 300 μm in diameter) and the ascending lamella of inner demibranch are nearly as long as descending lamella.

As it has been reported by Oldfield (1961) for *Tellimya ferruginosa* and Jespersen et al. (2007) for *Epilepton clarkiae* (Clark, 1852), the byssus gland of *Tellimya tehuelcha* is divided in two parts by a central lamella, and differs from that described for *Montacuta substriata*, in which the glandular duct open to a radial structure formed by numerous lamellae (Oldfield, 1961).

Mode of Life

The species of *Tellimya* for which their habitat is known are frequently associated to irregular echinoids. In this regard, the mode of life of *Tellimya tehuelcha* is similar to that reported for the small specimens of *T. ferruginosa*, which live attached to the ventral or subanal spines of the echinoids *Echinocardium cordatum* (Pennant, 1777), *E. flavescens* (Müller, 1776), *E. pennatifidum* Norman, 1868, and *Spatangus purpureus* (Müller, 1776) (Pophan, 1940; Oldfield, 1961; Gage, 1966a). However, larger specimens of *T. ferruginosa* occur free in the burrow produced by the echinoid. This fact is related to the absence of byssus gland in larger specimens of *T. ferruginosa* (Pérès, 1937; Gage, 1966a). On the contrary, in *T. tehuelcha* the byssus gland is persistent in adults, and adult specimens also appear attached to the host. Pérès (1937) reported that usually two or three specimens of *T. ferruginosa* are found per echinoid, with a maximum of five or six. Marshall (1891) reported up to 18 bivalves per echinoid, but being only one of them "mature". These characteristics on the mode of life are similar to those observed in *T. tehuelcha*, in which up to ten attached bivalves per echinoid were found, with only one of them full sized.

Tellimya vitrea aupouria was reported as living on the interambulacrum five of the irregular echinoid *Brissus gigas* Fell, 1947 (Ponder, 1968), and *Tellimya tenella* as living free, in fine sediments (Ockelman, 1965) or "on *Brissopsis lyrifera* (Forbes) (?)" (Lovén, 1848).

Reproductive Biology

According to Oldfield (1961), *Tellimya ferruginosa* is a protogynous, consecutive hermaphrodite, with the gonad developing first entirely as female, undergone a short transition period after the ova are shed, and then become entirely male. Jespersen et al. (2004) stated that the montacutid *Brachiomya stigmatica* Jespersen, Lützen & Nielsen, 2004 might be considered either as a protogynic or alternate hermaphrodite. Our findings for *Tellimya tehuelcha* indicate that the species should be considered a protandric hermaphrodite.

The development of *Tellimya tehuelcha* is entirely lecithotrophic and occurs within the branchial space of the parental specimens; consequently, the free-living larval stage is suppressed. According to Pophan (1940) and Gage (1966b), *Tellimya ferruginosa* retains early larvae (up to a size of about 140 µm diameter) in the demibranch, which are later released, following a planktonic life period until they metamorphose and settle, when reaching about 410 µm diameter. This is consistent with that described for *Tellimya tenella*, in which shelled embryos (of 127–137 µm in diameter) were found in the demibranch of parental specimens, and free veligers of up to 420 µm in diameter were found in the plankton (Ockelman, 1965). The study of the reproductive biology of *Tellimya tehuelcha* is currently in progress.

Geographic Distribution

At the present state of knowledge of the genus, the distribution of *Tellimya* shows as a patchy global pattern. Species of the genus were reported from the Northern Hemisphere in the northeast Atlantic (*Tellimya ferruginosa*, *Tellimya tenella*, *T. voeringi*) and Mediterranean Sea (*Tellimya ferruginosa*, *Tellimya semirubra*); other reports also come from the Southern Hemisphere in Australia (*Tellimya vitrea vitrea*), and New Zealand (*Tellimya vitrea aupouria*, *Tellimya benthicola*, *Tellimya reinga*).

The original illustration of *M. cylindracea* Smith, 1885, a species described from the "North Atlantic deep waters", shows a hinge plate similar to that of *Tellimya*. According to Serge Gofas (personal communication), *M. cylindracea* may be a synonym of *T. ferruginosa*.

Four species from the sub-Antarctic and Antarctic waters have been described under *Tellimya* (i.e., *T. antarctica* Smith, 1907, *T.*

minima Thiele, 1912, *T. ovalis* Thiele, 1912, and *T. flavida* Preston, 1916), but all were subsequently reallocated by Dell (1964) into *Mysella* Angas, 1877, and *Rochefortia* Velain, 1877. Thus, the new species described here provides new evidence on the occurrence of this genus in the Southern Hemisphere, and represents the first record not only for the Magellan Region but also for South America.

ACKNOWLEDGEMENTS

Sonia Zapata kindly allowed the authors the use of laboratory facilities and equipment at the Centro de Investigaciones, Universidad Nacional de la Patagonia Austral (Puerto Deseado) during field activities, for which they are deeply indebted. The authors express also their gratitude to Lilia Lauria for allowing the use of microphotography equipment. Yuri Kantor, Jan Pechenik, Thierry Backeljau, and the Museo de La Plata librarians kindly helped to obtain some literature. This study was partially funded by UBACyT 20020090300152, PICT 38015 and PICT 01839.

LITERATURE CITED

- AARTSEN, J. J. VAN, 1997 ["1996"], Galeommatacea & Cyamiacea. Part II. *La Conchiglia*, 281: 27–53, 61.
- BERNARD, F., 1895a, Sur un lamellibranche nouveau (*Scioberetia australis*) commensal d'un échinoderme. *Comptes Rendus de l'Academie des Sciences*, 121(17): 569–571.
- BERNARD, F., 1895b, *Scioberetia australis*, type nouveau de lamellibranche. *Bulletin Scientifique de la France et la Belgique*, 27: 364–395.
- BERNARD, F., 1895c, Sur quelques stades du développement du *Scioberetia australis* nob., lamellibranche à coquille interne. *Bulletin du Muséum d'Histoire Naturelle*, 17: 275–277.
- CHAVAN, A., 1969, Superfamily Leptonacea. Pp. 518–537, in: R. C. MOORE, ed., *Treatise on invertebrate paleontology*, Part N [Bivalvia], part. 6, vols. 1–2. Lawrence, Kansas, xxxvii + 952 pp.
- DELL, R. K., 1964, Antarctic and sub-Antarctic Mollusca: Amphineura, Scaphopoda and Bivalvia. *Discovery Reports*, 33: 93–250, pls. 2–7.
- DEROUX, G., 1961, Rapports taxonomiques d'un leptonacé non décrit "*Lepton subtrigonum*" Jeffreys (*nomen nudum* - 1873). *Cahiers de Biologie Marine*, 2: 99–153.
- GAGE, J., 1966a, Observations on the bivalves *Montacuta substriata* and *M. ferruginosa* "commensals" with spatangoids. *Journal of the Marine Biological Association of the United Kingdom*, 46: 49–70.
- GAGE, J., 1966b, The life-histories of the bivalves *Montacuta substriata* and *M. ferruginosa*,

- “commensals” with spatangoids. *Journal of the Marine Biological Association of the United Kingdom*, 46: 499–511.
- GRAY, J. E., 1847, A list of genera of Recent Mollusca, their synonyma and types. *Proceedings of the Zoological Society of London*, 15: 129–182.
- JESPERSEN, A., J. LÜTZEN & C. NIELSEN, 2004, On three species and two new genera (*Montacutella* and *Brachiomya*) of galeommatoid bivalves from the irregular sea urchin *Bryssus latecarinatus* with emphasis on their reproduction. *Zoologischer Anzeiger*, 243: 3–19.
- JESPERSEN, A., J. LÜTZEN & P. GRAHAM OLIVER, 2007, Morphology, biology and systematic position of *Epilepton clarkiae* (Clark, 1852) (Galeommatoida: Montacutidae) a bivalve commensal with sipunculans. *Journal of Conchology*, 39: 391–401.
- KAMENEV, G. M., 2008, Little-known arctic species *Montacuta spitzbergensis* (Bivalvia: Montacutidae) from the north-western Pacific with notes on *Montacuta substriata* and *Tellimya ferruginosa*. *Journal of the Marine Biological Association of the United Kingdom*, 88: 347–356.
- LOVÉN, S. L., 1848, Bidrag till Kännedomen om utvecklingen af Mollusca Acephala Lamellibranchiata. *Kongliga Svenska Vetenskaps-Akademiens Handlingar* for 1848 (2): 329–436, pls. 10–15, 1 table.
- MARSHALL, B. A., 2002, Some Recent Thraciidae, Periplomatidae, Myochamidae, Cuspidariidae and Spheniopsidae (Anomalodesmata) from the New Zealand region and referral of *Thracia reinga* Crozier, 1966 and *Scintillona benthicola* Dell, 1956 to *Tellimya* Brown, 1827 (Montacutidae) (Mollusca: Bivalvia). *Molluscan Research*, 22(3): 221–288.
- MARSHALL, J. T., 1891, The habitat of *Montacuta ferruginosa*. *Journal of Conchology*, 6: 399–404.
- OCKELMANN, K. W., 1965, Redescription, distribution, biology and dimorphous sperm of *Montacuta tenella* Lovén (Mollusca, Leptonacea). *Ophelia*, 2(1): 211–221.
- OLDFIELD, E., 1961, The functional morphology of *Kellia suborbicularis* (Montagu), *Montacuta ferruginosa* (Montagu) and *M. substriata* (Montagu) (Mollusca, Lamellibranchiata). *Proceedings of the Malacological Society of London*, 34(5): 255–295.
- PELSENEER, P., 1925, Un lamellibranche commensal de lamellibranche et quelques autres lamellibranches commensaux. *Travaux de la Station Zoologique de Wimereux*, 9: 166–182.
- PÉRES, J. M., 1937, Sur trois espèces du genre *Montacuta* (Kellyidae). *Travaux de la Station Biologique de Roscoff*, 15: 5–28.
- PONDER, W. F., 1968, Three commensal bivalves from New Zealand. *Records of the Dominion Museum*, 6(9): 125–131.
- POPHAM, M. L., 1940, The mantle cavity of some of the Erycinidae, Montacutidae and Galeommatidae with special reference to the ciliary mechanisms. *Journal of the Marine Biological Association of the United Kingdom*, 24: 549–586.
- ZELAYA, D. G. & C. ITUARTE, 2002, The identity of *Waldo parasiticus* (Dall, 1876) and description of *Waldo trapezialis* new species (Bivalvia: Galeommatoida). *Nautilus*, 116(4): 109–117.

Revised ms. accepted 31 July 2011