



## **A New Record of a Pest Mite on Strawberry: Phytonemus pallidus (Banks) (Acari: Tarsonemidae) Arrives in Minas Gerais, Brazil**

Authors: Vacacela Ajila, Henry E., Lemos, Felipe, Colares, Felipe, Ferreira, João A. M., Lofego, Antônio C., et al.

Source: Florida Entomologist, 101(3) : 529-532

Published By: Florida Entomological Society

URL: <https://doi.org/10.1653/024.101.0330>

---

BioOne Complete ([complete.BioOne.org](https://complete.BioOne.org)) is a full-text database of 200 subscribed and open-access titles in the biological, ecological, and environmental sciences published by nonprofit societies, associations, museums, institutions, and presses.

Your use of this PDF, the BioOne Complete website, and all posted and associated content indicates your acceptance of BioOne's Terms of Use, available at [www.bioone.org/terms-of-use](https://www.bioone.org/terms-of-use).

Usage of BioOne Complete content is strictly limited to personal, educational, and non - commercial use. Commercial inquiries or rights and permissions requests should be directed to the individual publisher as copyright holder.

---

BioOne sees sustainable scholarly publishing as an inherently collaborative enterprise connecting authors, nonprofit publishers, academic institutions, research libraries, and research funders in the common goal of maximizing access to critical research.

# A new record of a pest mite on strawberry: *Phytonemus pallidus* (Banks) (Acari: Tarsonemidae) arrives in Minas Gerais, Brazil

Henry E. Vacacela Ajila<sup>1,\*</sup>, Felipe Lemos<sup>2</sup>, Felipe Colares<sup>2</sup>, João A. M. Ferreira<sup>2</sup>, Antônio C. Lofego<sup>3</sup>, and Angelo Pallini<sup>1</sup>

*Phytonemus pallidus* (Banks) (Acari: Tarsonemidae), also known as cyclamen mite, is a phytophagous mite commonly associated with strawberry crops in several countries, where it infests young leaves, flowers, and fruits of plants (Smith & Goldsmith 1936; Alford 1972; Easterbrook et al. 2001; Petrova et al. 2002; Berglund et al. 2007; Gobin & Bangels 2008; Tuovinen & Lindqvist 2010). Severe infestations of *P. pallidus* lead to a reduction in the development of petioles, which become brown or brittle, and results in dwarfing of the strawberry plants (Smith & Goldsmith 1936; Croft et al. 1998; Fadini et al. 2004). The infested fruits are reduced in size and brownish in color, and are unsuitable for harvest (Pallini et al. 2002; Gobin & Bangels 2008).

In Brazil, strawberry is a very important crop due to the economic return it generates (Antunes et al. 2007). The leading producing states are Minas Gerais, Rio Grande do Sul, and São Paulo (IBGE 2006; Antunes et al. 2007; Henz 2010). There are several pests and diseases that attack strawberry crops in Brazil; however, to date, there are no reports of *P. pallidus* in this crop, although it has been reported on grapes and cyclamen (Moraes & Flechtmann 2008; Oliveira Andrade-Bertolo et al. 2013).

In 2 strawberry-producing localities in the municipalities of Ervália and Canaã (20.842778°S, 42.675306°W and 20.706853°S, 42.648578°W, respectively), we found strawberry plants with the typical symptoms caused by *P. pallidus*: brownish leaves and fruits, and an apparent reduction in size (Fig. 1B). We monitored the plants in greenhouses at both localities for several wk (from Nov 2014 until Mar 2015). The estimated losses caused by *P. pallidus* ranges from 22 to 50% of strawberry yields (Alford 1972; Stenseth & Nordby 1976); however, we observed losses of 100% in production due to the attack of this pest in Minas Gerais (personal observations) (Fig. 1A).

During the monitoring period, we collected plant material (leaves and fruits) and packed the material into paper bags for transport to the laboratory, where further analysis was performed. The fruits and leaves were examined at 5× under a stereomicroscope (Stemi 2000 Zeiss, Göttingen, Germany). We observed mites in different stages of development (eggs, juveniles, and adults) on

both leaves and fruits, with more individuals observed on the latter (Fig. 2A, B, C). Additionally, adults were observed walking on the surface and in the crevices of the fruits.

To confirm the species identity, individuals were collected, mounted on slides, and sent to a specialist. After analysis by a taxonomist (A. C. Lofego) based on morphological characteristics, it was identified as *P. pallidus*. Diagnostic features observed in females were: stigmata located post-laterally and very close to seta v1; sejugal apodeme not visible; post-sternal apodeme reduced; seta pl'' (spike) absent in tarsus II; apodeme 4 extending postero-lateral relative to the base of seta 3b; tergite setae (c1, c2, d, e, f, h) with similar sizes, between 8 and 12 μm, except for c1, which is thin, smooth, whereas the others are slightly thickened and serrated (Fig. 2D, E, F).

The failure of *P. pallidus* being reported earlier in the principal strawberry-producing areas in Brazil does not necessarily mean it was not present. Here we report the presence of this mite infesting and causing severe losses to growers in Minas Gerais. We believe that in the future more attention should be paid to the presence and possible economic losses caused by *P. pallidus* in other strawberry-producing areas in Brazil.

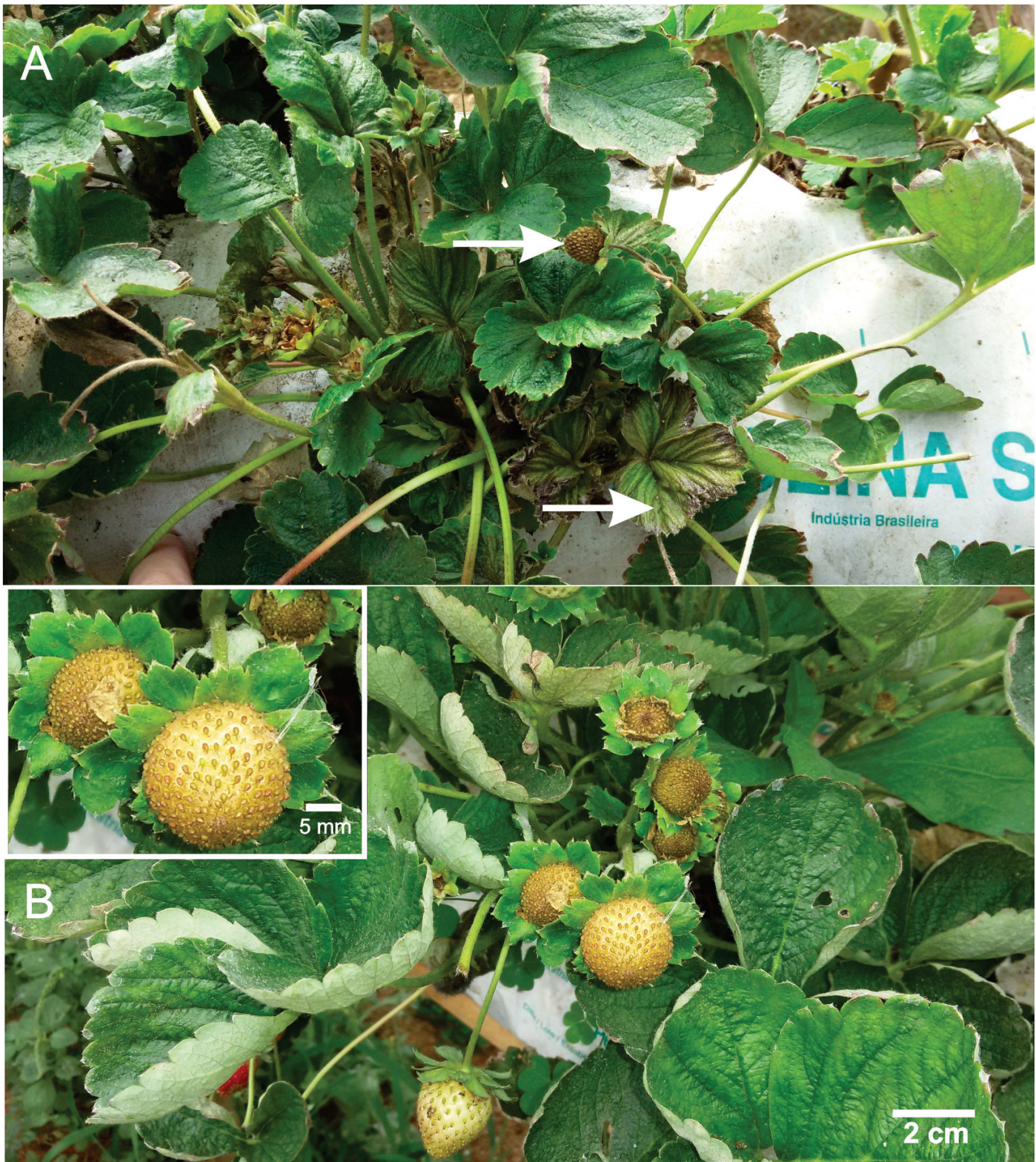
The severity of the attack of *P. pallidus* on strawberry crops around the world is unquestionable. The key management approach for *P. pallidus* management is the acquisition and planting of strawberry plants that are free of the pest. Once *P. pallidus* is established in strawberry crops, its suppression is more complex due to its tendency to seek refuge under the calyxes or within the crevices of the fruits, where they are less conspicuous and somewhat protected from insecticides. Furthermore, no commercial acaricide is registered for the control of *P. pallidus* in Brazil. For this reason, the search for alternative methods of control that are compatible with organic farming systems should be considered as a priority measure. The use of natural enemies for the management of *P. pallidus* on strawberry crops in Brazil could constitute a sustainable alternative, because this approach is already being practiced in other countries (Smith & Goldsmith 1936; Huffaker & Spitzer 1951; Huffaker & Kennett 1956; Stenseth & Nordby 1976; Croft et al. 1998; Easterbrook et al. 2001; Petrova et al. 2002; Tuovinen & Lindqvist 2010).

<sup>1</sup>Department of Entomology, Section Acarology, Federal University of Viçosa, Viçosa, Minas Gerais, 36570-900, Brazil; E-mail: henryeduar2@hotmail.com (H. E. V. A.); pallini@ufv.br (A. P.)

<sup>2</sup>Econrole Research & Consulting Ltda., Technological Center of Regional Development of Viçosa (CenTev), Federal University of Viçosa, Viçosa, Minas Gerais, 36570-900, Brazil; E-mail: felipelemosufv@yahoo.com.br (F. L.); fcolaresbatista@yahoo.com.br (F. C.); joao.ferreira@outlook.com (J. A. M. F.)

<sup>3</sup>Department of Zoology and Botany, São Paulo State University, São José do Rio Preto, São Paulo, 15054-000, Brazil; E-mail: aclofego@ig.com.br (A. C. L.)

\*Corresponding author; E-mail: henryeduar2@hotmail.com

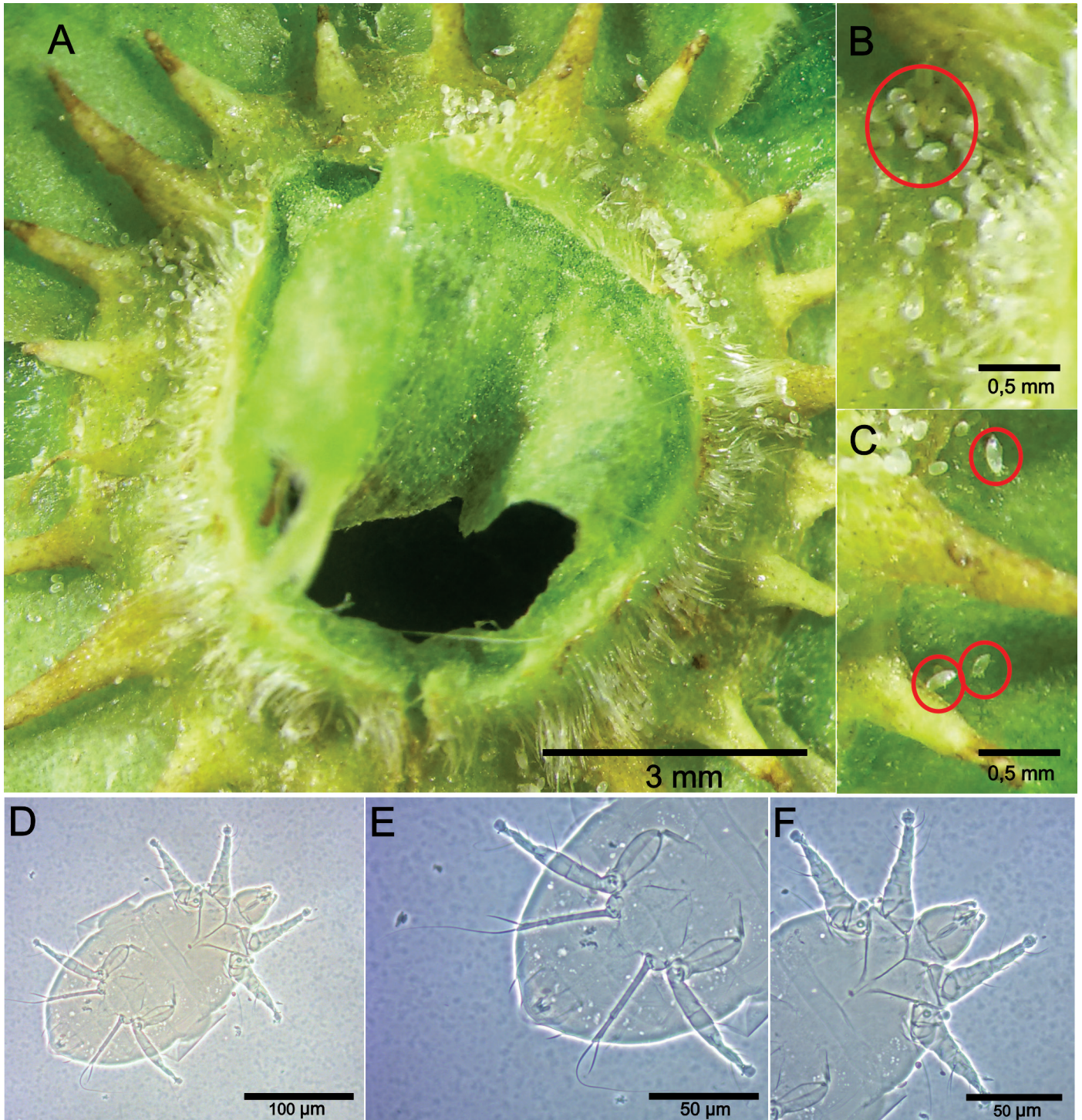


**Fig. 1.** Strawberry plant damaged by *Phytonemus pallidus* in the field. Arrows indicate typical “tanning” damage in leaves and fruits (A); strawberry plants infested by the phytophagous mite *P. pallidus* (B). Inset, a magnification showing the tanning on the fruits.

## Acknowledgments

We are grateful to Minas Gerais Research Support Foundation - FAPEMIG (Project number APQ-00479-16), Coordination for the Improvement of Higher Education Personnel (CAPES), and National

Council of Science and Technological Development (CNPq), Econtrole Research & Consulting Ltda., and to strawberry growers José Vanderley Rezende Ferreira and Henrique Leandro Machado. Author HEVA was supported by the Students-Postgraduate Agreement Program - PEC-PG, CAPES / CNPq – Brazil, and author AP by FAPEMIG and CNPq.



**Fig. 2.** Calyx of strawberry fruit infested with *Phytonemus pallidus* mite (A); *P. pallidus* eggs (B); juveniles and adults on the surface of the calyx (C); ventral view of a *P. pallidus* female under microscope (20×) (D); idiosoma (40×) (E); proterosoma (40×) (F).

**Summary**

*Phytonemus pallidus* was found in organic strawberry crops in 2 municipalities in the state of Minas Gerais. The sparse information about this pest in the country indicated that *P. pallidus* had been observed previously only on grapes in southern Brazil. The presence of this pest in the country is relatively new, although in the USA and in some European countries it is already well known due to the economic losses it causes.

The report of the occurrence of this herbivore, as well as the affected crops, is essential for the official institutions to take appropriate measures to prevent dispersion to other states. Future studies should be directed to the search for effective alternatives for the management of this pest, because currently there are no insecticides registered for control in Brazil. An alternative that could be considered is biological control.

Key Words: cyclamen mite; first report; organic strawberry crops; phytophagous mite

## Sumário

---

*Phytonemus pallidus* foi encontrado em cultivos de morango em 2 municípios pertencentes à zona da Mata Mineira. A pouca informação existente sobre esta praga indicava que *P. pallidus* estava presente apenas na cultura da videira no sul do Brasil. A presença desta praga no país é relativamente recente, já nos EUA e em alguns países da Europa ela é bem conhecida devido às perdas econômicas que pode ocasionar. O relato da ocorrência deste herbívoro nas diferentes regiões do país, bem como das culturas afetadas, é fundamental para que as instituições responsáveis tomem as medidas cabíveis para evitar a sua dispersão para outros estados da federação onde também se cultiva morango. Futuros estudos deveriam estar direcionados na busca de alternativas efetivas para o manejo adequado desta praga, uma vez que não há acaricidas registrados para o seu controle até o momento. Uma alternativa que poderia ser considerada é o controle biológico.

Palavras Chaves: Ácaro do enfezamento; primeiro relato; cultivos de morango orgânico; ácaro fitófago

## References Cited

---

- Alford D. 1972. The effect of *Tarsonemus fragariae* Zimmermann (Acarina: Tarsonemidae) on strawberry yields. *Annals of Applied Biology* 70: 13–18.
- Antunes L, Duarte Filho J, Calegario F, Costa H, Reisser Junior C. 2007. Produção integrada de morango (PIMo) no Brasil. *Morango: Conquistando novas fronteiras*. Informe Agropecuário Belo Horizonte 28: 34–39.
- Berglund R, Svensson B, Nilsson C. 2007. Evaluation of methods to control *Phytonemus pallidus* and *Anthonomus rubi* in organic strawberry production. *Journal of Applied Entomology* 131: 573–578.
- Croft B, Pratt P, Koskela G, Kaufman D. 1998. Predation, reproduction, and impact of phytoseiid mites (Acari: Phytoseiidae) on cyclamen mite (Acari: Tarsonemidae) on strawberry. *Journal of Economic Entomology* 91: 1307–1314.
- Easterbrook MA, Fitzgerald JD, Solomon MG. 2001. Biological control of strawberry tarsonemid mite *Phytonemus pallidus* and two-spotted spider mite *Tetranychus urticae* on strawberry in the UK using species of *Neoseiulus* (*Amblyseius*) (Acari: Phytoseiidae). *Experimental and Applied Acarology* 25: 25–36.
- Fadini MAM, Venzon M, Pallini A, Oliveira HG. 2004. Manejo ecológico de ácaros fitófagos na cultura do morangueiro. 2º Simpósio Nacional do Morango 1º Encontro de Pequenas Frutas e Frutas Nativas: 80.
- Gobin B, Bangels E. 2008. Field control of strawberry mite *Phytonemus pallidus*. *IOBC/WPRS Bulletins* 39: 97–100.
- Henz GP. 2010. Desafios enfrentados por agricultores familiares na produção de morango no Distrito Federal. *Horticultura Brasileira* 28: 260–265.
- Huffaker CB, Kennett CE. 1956. Experimental studies on predation: predation and cyclamen-mite populations on strawberries in California. *Hilgardia* 26: 191–222.
- Huffaker CB, Spitzer Jr CH. 1951. Data on the natural control of the cyclamen mite on strawberries. *Journal of Economic Entomology* 44: 519–522.
- IBGE (Instituto Brasileiro de Geografia e Estatística). 2006. Censo agropecuário 2006 - Brasil, grandes regiões e unidades da federação, Rio de Janeiro, Brazil.
- Moraes GJ, Flechtmann CHW. 2008. Manual de acarologia: acarologia básica e ácaros de plantas cultivadas no Brasil. *Holos*, Ribeirão Preto, São Paulo, Brazil.
- Oliveira Andrade-Bertolo F, Moura RB, Matioli AL, Ott AP. 2013. New records of mites (Acari: Prostigmata) on *Vitis* sp. (L.) in Brazil. *Comunicata Scientiae* 4: 414–418.
- Pallini A, Fadini M, Lemos W, Venzon M. 2002. Manejo integrado de ácaros em fruteiras tropicais e subtropicais, pp. 579–614 *In* Zambolin L [ed.], *Manejo integrado-fruteiras tropicais: Doenças e pragas*. Universidade Federal de Viçosa, Viçosa, Minas Gerais, Brazil.
- Petrova V, Cudare Z, Steinitz I. 2002. The efficiency of the predatory mite *Amblyseius cucumeris* (Acari: Phytoseiidae) as a control agent of the strawberry mite *Phytonemus pallidus* (Acari: Tarsonemidae) on field strawberry. *Acta Horticulturae* 567: 675–678.
- Smith LM, Goldsmith EV. 1936. The cyclamen mite, *Tarsonemus pallidus*, and its control on field strawberries. *Hilgardia* 10: 53–94.
- Stenseth C, Nordby ALF. 1976. Damage, and control of the strawberry mite *Stenotarsonemus pallidus* (Acarina: Tarsonemidae), on strawberries. *Journal of Horticultural Science* 51: 49–24.
- Tuovinen T, Lindqvist I. 2010. Maintenance of predatory phytoseiid mites for preventive control of strawberry tarsonemid mite *Phytonemus pallidus* in strawberry plant propagation. *Biological Control* 54: 119–125.