

A Global Phylogenomic Study of the Thelypteridaceae

Authors: Fawcett, Susan, Smith, Alan R., Sundue, Michael, Burleigh, J. Gordon, Sessa, Emily B., et al.

Source: Systematic Botany, 46(4) : 891-915

Published By: The American Society of Plant Taxonomists

URL: <https://doi.org/10.1600/036364421X16370109698650>

BioOne Complete (complete.BioOne.org) is a full-text database of 200 subscribed and open-access titles in the biological, ecological, and environmental sciences published by nonprofit societies, associations, museums, institutions, and presses.

Your use of this PDF, the BioOne Complete website, and all posted and associated content indicates your acceptance of BioOne's Terms of Use, available at www.bioone.org/terms-of-use.

Usage of BioOne Complete content is strictly limited to personal, educational, and non - commercial use. Commercial inquiries or rights and permissions requests should be directed to the individual publisher as copyright holder.

BioOne sees sustainable scholarly publishing as an inherently collaborative enterprise connecting authors, nonprofit publishers, academic institutions, research libraries, and research funders in the common goal of maximizing access to critical research.

A Global Phylogenomic Study of the Thelypteridaceae

Susan Fawcett,^{1,2,8} Alan R. Smith,³ Michael Sundue,¹ J. Gordon Burleigh,⁴ Emily B. Sessa,⁴ Li-Yaung Kuo,⁵ Cheng-Wei Chen,⁶ Weston L. Testo,^{1,4} Michael Kessler,⁷ GoFlag Consortium,^{4,9} and David S. Barrington¹

¹Pringle Herbarium, Department of Plant Biology, University of Vermont, 111 Jeffords Hall, 63 Carrigan Dr., Burlington, Vermont 05401, USA

²University and Jepson Herbaria, University of California, 1001 Valley Life Sciences Bldg., Berkeley, California 94720-2465, USA

³University Herbarium, University of California, 1001 Valley Life Sciences Bldg., Berkeley, California 94720-2465, USA

⁴Department of Biology, University of Florida, 220 Bartram Hall, Gainesville, Florida 32611-8525, USA

⁵Institute of Molecular & Cellular Biology, National Tsing Hua University, No. 101, Section 2, Kuang-Fu Road, Hsinchu, Taiwan

⁶Independent researcher, Keelung 202, Taiwan

⁷Department of Systematic & Evolutionary Botany, University of Zurich, Zollikerstrasse 107, CH-8008, Zurich, Switzerland

⁸Author for correspondence (susan.fawcett@gmail.com)

⁹GoFlag is an NSF-funded project (DEB 1541506) based at the University of Florida, Field Museum, and University of Arizona. Project personnel include (at UF): J. Gordon Burleigh, Emily Sessa, Stuart McDaniel, Christine Davis, Pavlo Antonenko, Sarah Carey, Lorena Endara, Weston Testo; (at Field): Matt von Konrat, Eve Gaus; (at UA): Hong Cui

Communicating Editor: Alejandra Vasco

Abstract—The generic classification of the Thelypteridaceae has been the subject of much controversy. Proposed taxonomic systems have varied from recognizing the approximately 1200 species in the family within the single genus *Thelypteris*, to systems favoring upwards of 30 genera. Insights on intrafamilial relationships, especially for neotropical taxa, have been gained from recent phylogenetic studies; however, in the most recent classification, 10 of 30 recognized genera are either non-monophyletic or untested. We sequenced 407 nuclear loci for 621 samples, representing all recognized genera and approximately half the known species diversity. These were analyzed using both maximum likelihood analysis of a concatenated matrix and multi-species coalescent methods. Our phylogenomic results, informed by recently published morphological evidence, provide the foundation for a generic classification which circumscribed 14 genera and recognized seven new genera. The 37 monophyletic genera sampled demonstrate greater geographic coherence than previous taxonomic concepts suggested. Additionally, our results demonstrate that certain morphological characters, such as frond division, are evolutionarily labile and are thus inadequate for defining genera.

Keywords—*Amauropelta*, *Christella*, ferns, phylogeny, *Pneumatopteris*, *Pronephrium*, systematics, targeted enrichment, taxonomy.

With approximately 1200 species currently recognized, the Thelypteridaceae is one of the largest families of ferns, and its species are highly diverse morphologically (Fig. 1) and ecologically (Fawcett and Smith 2021). It is a member of the Aspleniinae, one of the two major clades of the eupolypod ferns, and is sister to a subclade that includes the Athyriaceae, Blechnaceae, Onocleaceae, and Woodsiaceae (PPG I 2016). The Thelypteridaceae is widespread throughout the tropics; a few species extend into boreal latitudes. The taxonomy of this diverse family remains contentious, and several differing generic classifications have been proposed.

Christensen (1913, 1920) was the first to suggest that thelypterids represent a natural group. In his monograph of New World members of the genus *Dryopteris*, he comprehensively treated American species now considered to belong to the Thelypteridaceae as subgenera of a broadly-defined *Dryopteris* Adans. With recognition of their many differences from *Dryopteris* s. s., most species now treated in Thelypteridaceae were subsequently transferred to *Thelypteris* in Asia (e.g. by Ching 1936) and in the Americas (e.g. by Morton 1963; Reed 1968). In these publications and others, *Thelypteris* had a very broad circumscription, including all, or nearly all, of the species belonging to modern-day Thelypteridaceae, ca. 1200 species. Many of the infrageneric taxa delimited by Christensen (1913, 1920) in *Dryopteris* were later recognized as subgenera in *Thelypteris*, with essentially the same circumscription. Ching (1963), who understood the distinctness of many Chinese and eastern Asia groups, went a step further and elevated these subgroups, as well as newly defined

segregates, to generic status. Further taxonomic refinements were made by Pichi Sermolli (1970) and Holttum (1971), and later by Ching (1978) and Holttum (1982). With these more restricted circumscriptions, *Thelypteris* became a small genus with only about two species. Pichi Sermolli (1977) was the first to attempt a worldwide reclassification of the Thelypteridaceae within a phylogenetic context; he recognized 32 genera in the family. Before the availability of molecular data, intermediate solutions were also proposed (e.g. Smith 1990). The taxonomy of the group remains controversial, with some authors still favoring a single-genus system for the family, citing the difficulty of using micro-morphological features to distinguish genera (e.g. Fraser-Jenkins et al. 2017). However, there is growing support for recognition of more genera that are supported by both molecular and morphological data (PPG I 2016; Schuettelpelz et al. 2018). For a more detailed history of the classification of the Thelypteridaceae, see Fawcett and Smith (2021).

With advances in microscopy, chromosome numbers provided a powerful new source of data for understanding the evolutionary relationships among ferns, using approaches pioneered by Irene Manton (1950). Some of the first attempts to develop hypotheses pertaining to phylogenetic relationships among genera incorporated cytological data in addition to morphology (Loyal 1963; Smith 1971; Pichi Sermolli 1977).

The first phylogenetic tree to infer relationships among genera of the Thelypteridaceae using molecular data was published by Smith and Cranfill (2002), based on three chloroplast DNA regions. This study confirmed the monophyly



FIG. 1. Morphological diversity of the Thelypteridaceae. A. *Plesioneuron attenuatum*, indusiate sori. B. *Chingia malodora*, stipe with terete scales. C. *Goniopteris pellita*, rachis and pinna base, with both long hyaline acicular and short stellate hairs (these visible on lamina margin). D. *Coryphopteris kolombangarae*, habit. E. *Reholtumia magnifica*, stipe vasculature. F. *Pneumatopteris glandulifera*, mucilaginous crozier with peg-like aerophores. G. *Meniscium reticulatum*, venation. H. *Sphaerostephanos polycarpus*, auriculate proximal pinnae. I. *Sphaerostephanos beccarianus*, sori with spherical yellow glands. J. *Goniopteris serrulata*, exindusiate round sori. K. *Sphaerostephanos doodioides*, erect rhizome. L. *Strophocaulon invisum*, long-creeping rhizome. M. *S. unitum*, habit. N. *Macrothelypteris polypodioides*, adaxial lamina. O. *Goniopteris sagittata*, pinna bases. Photos C, G, J, O by S. Fawcett, all other photos by C.-W. Chen.

of the family and demonstrated the sister relationship of two major subclades within the family now recognized as subfamilies Phegopteridoideae and Thelypteridoideae. It also showed that the chromosome base number $x = 36$ is synapomorphic for the large lineage they named the cyclosoroid clade. The 27 taxa chosen for their study represented all major lineages within the family, and the relationships they inferred have been largely supported by all subsequent studies.

Later work (Schuettepelz and Pryer 2007; Ebihara 2011; He and Zhang 2012; Almeida et al. 2016; Patel et al. 2019), also relying primarily on cpDNA, increased taxon sampling and provided greater resolution and support for relationships inferred in earlier studies. However, even with limited sampling in the most diverse groups, these studies revealed that several genera were not monophyletic. In their study of Old World genera, He and Zhang (2012) demonstrated that *Christella*, *Parathelypteris*, and *Pronephrium* were non-monophyletic. Almeida et al. (2016) provided greater resolution for the monophyletic neotropical genera *Amauropelta*, *Goniopteris*, *Meniscium*, and *Steiropteris*, and published accompanying taxonomic changes (Salino et al. 2015). They also provided evidence that the paleotropical genera *Pneumatopteris* and *Sphaerostephanos* were non-monophyletic, based on very limited sampling. Most recently, Patel et al. (2019) corroborated these findings, notably the coherence of subgeneric taxa such as *Christella* sect. *Pelazoneuron* Holttum and *Pronephrium* sect. *Grypophrix* Holttum.

The Pteridophyte Phylogeny Group (PPG) was organized to develop a consensus-based classification system for all ferns and lycophytes, based on a collaborative effort of nearly 100 pteridologists from around the world, incorporating all available phylogenetic data. The resulting publication (PPG I 2016) proposed a family and genus-level taxonomy for all ferns and lycophytes, including species-number estimates, and phylogenetic status (e.g. monophyletic, non-monophyletic, or untested) for each genus. The resulting classification of the Thelypteridaceae largely followed the circumscriptions presented by Smith and Cranfill (2002), He and Zhang (2012), and Almeida et al. (2016). Although the Thelypteridaceae is by far most diverse in the Paleotropics, it was also the least studied there, with 10 of the 30 recognized genera known to be non-monophyletic or untested. In the absence of molecular data, the morphology-based taxonomy proposed by Holttum (1971, 1974, 1977, 1982) was largely adopted for these taxa.

The objectives of the present study are to: 1) infer the infra-familial and infrageneric relationships within the Thelypteridaceae using a large nuclear-DNA dataset; 2) assess the taxonomic hypotheses proposed by PPG I (2016); and 3) provide the phylogenetic foundation for a revised generic classification of the Thelypteridaceae worldwide.

MATERIALS AND METHODS

Sampling Design—Our goal was to sample broadly across the family, but with an emphasis on the Paleotropics, which hosts the greatest diversity both in species richness and number of genera and has been poorly represented in previous phylogenetic studies. In most cases we included a single sample per species, but widespread or taxonomically complex species (e.g. *Christella hispidula*) were represented by multiple accessions. We sought to include the type species for each genus, but were unable to include those of *Leptogramma*, *Pronephrium*, or *Trigonospora*. Our sample includes 621 accessions of about 500 species (including several that are probably undescribed), representing nearly half of the approximately 1200 species in the family. Our sample includes all genera recognized by PPG I (2016), including the rare, monotypic African genus *Menisorus*,

which has not previously been included in any molecular phylogenetic study. Tissue was derived from silica-dried samples and herbarium specimens, some of which were more than 100 years old. All samples collected by contributing authors were obtained under the respective collection and export permits of the collection countries, and by local landowner permission. Most tissue vouchers are at UC, TAIF, or VT, with others at BO, CMUH, CR, DUKE, F, FLAS, GH, GOET, HOXA, HUH, INB, JBSD, JEPS, KEP, KLU, LBG, LPB, MAPR, MICH, MO, NY, P, PAP, PE, PNH, PTBG, S, SBBG, TNS, and Z. (Appendix 1).

DNA Extraction and Sequencing—DNA extractions were performed at the University of Florida, Gainesville, using a cetyltrimethylammonium bromide (CTAB) extraction protocol (Doyle and Doyle 1987), with 2.5% polyvinylpyrrolidone and 0.4% beta-mercaptoethanol and two rounds of chloroform washes followed by an isopropanol precipitation and an ethanol wash. We also added 2 μ L of 10mg/mL RNase A (Qiagen, Valencia, CA, USA) to each sample between chloroform washes to remove RNA contamination. All samples yielded more than the minimum threshold of 5ng DNA required for sequencing.

We used a targeted enrichment sequencing approach with the *GoFlag 408* probe set to generate a large-scale nuclear data set (Breinholt et al. 2021). This probe set targets 408 conserved exons that are found within 229 of the single-copy nuclear genes identified by the 1KP transcriptome sequencing initiative (Leebens-Mack et al. 2019). The probes were designed from transcriptome and genomic sequences to target exons across flagellate land plants (mosses, liverworts, hornworts, lycophytes, ferns, and all gymnosperms) that were single or low-copy, at least 120 bp in length, and that had at least 65% pairwise sequence identity across land plants (see Breinholt et al. 2021). The library construction, targeted enrichment, and sequencing were all done by RAPiD Genomics (Gainesville, Florida) as part of the NSF-funded Genealogy of Flagellate Plants (GoFlag) project. After a bead-based DNA cleanup step, DNA was normalized to 250 ng and sheared to an average size of 300 base pairs (bp). Illumina-comparable libraries were constructed by repairing the ends of the sheared fragments followed by the addition of an adenine residue to the 3'-end of the blunt-end fragments (Bentley et al. 2008). Barcoded adapters suited for the Illumina sequencing platform were ligated to the libraries, and ligated fragments were PCR-amplified 9–11 cycles. Target enrichment was performed using the *GoFlag 408* probes following protocols based on Gnirke et al. (2009). After enrichment, samples were re-amplified for additional 6–12 cycles. All enriched samples were sequenced using an Illumina HiSeq 3000 with paired-end 100 bp reads. The sequence reads were deposited in the NCBI sequence read archive (SRA; BioProject 646399).

The raw reads were cleaned and assembled into sequence alignments containing both the targeted exon regions and the more variable flanking intron regions using the six-step iterative baited assembly pipeline described in Breinholt et al. (2021). In short, first adapters and bases with Phred scores less than 20 were trimmed from the paired-end raw reads with Trim Galore! v. 0.4.4 (https://www.bioinformatics.babraham.ac.uk/projects/trim_galore/), and we retained only pairs of reads in which both the forward and reverse read were at least 30 bp long. Next, raw reads with significant homology to each exonic target region based on reference transcriptome sequences were identified using USEARCH v. 7.0 (Edgar 2010), and then an iterative (3 \times) de novo assembly was performed with the set of homologous reads for each target locus with BRIDGER v. 2014-12-01 (Chang et al. 2015). The BRIDGER kmer size parameter was 25, and the minimum depth of coverage for the kmers to be included in the assembly was 10. We assessed orthology of the assembled sequences based on the best tblastx (Camacho et al. 2009) hit of the exonic target region of each assembled sequence to the coordinates of nine plant genomes representing hornworts, liverworts, mosses, lycophytes, ferns, and gymnosperms. We called an assembled sequence an ortholog of the probe region if it had no additional tblastx hits with > 95% of the best bit score, outside of a 1000 base pair flanking window around the genomic coordinates of the exonic target locus in any one of the reference genomes. Next, to filter out likely contaminants, for each assembled sequence we performed a tblastx search against the respective reference sequences for that locus. If a sequence's best hit was not a fern, that sequence was removed as a potential contaminant. Finally, we aligned the resulting sequences using MAFFT v. 7.425 (Katoh and Standley 2013). Alignments were done for the full sequences, which included the exonic target loci and flanking intron sequences. After the alignments, sequences from the same taxon with mismatches due to heterozygous sites were merged using nucleotide ambiguity codes to represent heterozygous sites. All the pipeline scripts with instructions are available on Dryad (Fawcett et al. 2021).



FIG. 2. A synoptical ML 1000 bootstrap consensus tree inferred from the 407-locus concatenated alignment illustrating relationships among genera of the Thelypteridaceae, and identifying major clades. Colors correspond to genera that underwent recent taxonomic changes. Letters indicate position in Figs. 3A–3I.

In some cases, after running the pipeline, a sample will have more than one sequence in locus alignment where the BRIDGER assembler identified potentially more than simple allelic variation. To minimize the possible effects of paralogy, in these cases, for each locus, we only retained sequences from samples with a single copy. We also removed any loci with sequences from fewer than 25 samples, and within each locus alignment, we removed any columns with fewer than 25 nucleotides. We then concatenated all the locus alignments into a supermatrix for phylogenetic analysis. One locus was inadvertently duplicated in the probe design process (Loci 91 and 92 are identical). The scripts used to perform these post-processing steps, as well as the resulting supermatrix, are available on Dryad (Fawcett et al. 2021).

Phylogenetic Analyses—The supermatrix was analyzed using maximum likelihood (ML) implemented in IQ-Tree v. 2.0.3 for Linux (Minh et al. 2020), with partitions representing each locus. We chose the edge-linked proportional substitution model, and GTR + F with separate rates for each partition was inferred by ModelFinder (Chernomor et al. 2016; Kalyaanamoorthy et al. 2017). Ultrafast bootstrap approximation with 1000 iterations (Minh et al. 2013; Hoang et al. 2017) was used to assess branch support. Ultrafast bootstrapping, which uses RELL (resampling estimated log-likelihoods) is a probabilistic approach, so we consider a minimum threshold of 95% to be “high support,” in contrast to the lower threshold typically accepted for traditional bootstraps (Minh et al. 2013).

Maximum likelihood analyses were also performed on each of the 407 single-locus alignments in IQ-Tree. Gene concordance factors (gCF) and site concordance factors (sCF) were calculated using the ML tree inferred from the concatenated alignment (Fawcett et al. 2021). These metrics complement classical measures of branch support such as bootstraps by providing detailed information about the topological variation in the underlying data, while accounting for variable taxon coverage among gene trees. Concordance factors are especially useful for large phylogenomic datasets, because unlike bootstrap support, which tends to increase

with the addition of loci, gCF and sCF are stable and informative with increasing sample size (Minh et al. 2020).

A species tree was inferred from the 407 individual ML gene trees using multi-species coalescence implemented in ASTRAL 5.7.3 (Fawcett et al. 2021; Zhang et al. 2017), and annotated with local posterior probabilities. Analyses were performed on the Vermont Advanced Computing Core at the University of Vermont and at the HiPerGator facility at the University of Florida. Raw sequence data were uploaded to the NCBI Sequence Read Archive, available at ncbi.nlm.nih.gov/bioproject/646399. The supermatrix alignment, partition file, multispecies coalescence analysis phylogeny, concordance analyses, and a spreadsheet of molecular vouchers are available on Dryad (Fawcett et al. 2021). Figures were created using FigTree v. 1.4.4. and Adobe Photoshop CC 2014.

RESULTS

Sequence Alignment—The supermatrix alignment of the Thelypteridaceae includes 621 total samples and 407 nuclear loci. Thirty-two samples initially included in the study were excluded. Among these, 14 were excluded because they amplified fewer than 50 loci. An additional 18 samples were excluded because they were resolved among outgroup taxa in preliminary phylogenetic analyses, and/or were on extremely long branches, likely indicating low sequence quality or contamination. In the remaining 621 samples, the average number of loci per included taxon is 378 (out of a possible 407), with a minimum of 113. An average of 5% of sequences per sample were discarded as possible paralogs. We found no significant difference ($t = -0.757$, $p = 0.449$) in the number

TABLE 1. A comparison of the classification system proposed by Fawcett and Smith (2021) to that of PPG I (2016), which largely follows He and Zhang (2012) and Holtum (1974, 1977, 1982) for the Old World, and Almeida et al. (2016) for the New World. Names in bold indicate new or recircumscribed genera. An asterisk (*) indicates a resurrected synonym, (**) indicates sections elevated in rank to genera, and (***) indicates newly described genera.

| Fawcett and Smith 2021 | PPG I (2016) |
|---------------------------|--|
| <i>Abacopteris</i> * | <i>Pronephrium</i> |
| <i>Amauropelta</i> | <i>Amauropelta</i> , <i>Parathelypteris</i> |
| <i>Amblovenatum</i> | <i>Amblovenatum</i> |
| <i>Ampelopteris</i> | <i>Ampelopteris</i> |
| <i>Chingia</i> | <i>Chingia</i> , <i>Amblovenatum</i> , <i>Plesioneuron</i> |
| <i>Christella</i> | <i>Christella</i> , <i>Pelazoneuron</i> , <i>Menisciopsis</i> |
| <i>Coryphopteris</i> | <i>Coryphopteris</i> |
| <i>Cyclogramma</i> | <i>Cyclogramma</i> |
| <i>Cyclosorus</i> | <i>Cyclosorus</i> |
| <i>Glaphyopteridopsis</i> | <i>Glaphyopteridopsis</i> |
| <i>Goniopteris</i> | <i>Goniopteris</i> |
| <i>Grypothrix</i> ** | <i>Pronephrium</i> |
| <i>Hoiokula</i> *** | <i>Pneumatopteris</i> |
| <i>Leptogramma</i> * | <i>Stegnogramma</i> |
| <i>Macrothelypteris</i> | <i>Macrothelypteris</i> |
| <i>Menisciopsis</i> ** | <i>Pronephrium</i> , <i>Christella</i> |
| <i>Meniscium</i> | <i>Meniscium</i> |
| <i>Menisorus</i> | <i>Menisorus</i> , <i>Pneumatopteris</i> |
| <i>Mesophlebion</i> | <i>Mesophlebion</i> |
| <i>Mesopteris</i> | <i>Mesopteris</i> , <i>Amblovenatum</i> |
| <i>Metathelypteris</i> | <i>Metathelypteris</i> |
| <i>Oreopteris</i> | <i>Oreopteris</i> |
| <i>Pakau</i> *** | <i>Pneumatopteris</i> |
| <i>Pelazoneuron</i> ** | <i>Christella</i> |
| <i>Phegopteris</i> | <i>Phegopteris</i> |
| <i>Plesioneuron</i> | <i>Plesioneuron</i> , <i>Pneumatopteris</i> , <i>Chingia</i> |
| <i>Pneumatopteris</i> | <i>Pneumatopteris</i> |
| <i>Pronephrium</i> | <i>Pronephrium</i> , <i>Nannothelypteris</i> |
| <i>Pseudocyclosorus</i> | <i>Pseudocyclosorus</i> |
| <i>Pseudophegopteris</i> | <i>Pseudophegopteris</i> |
| <i>Reholtumia</i> *** | <i>Pneumatopteris</i> |
| <i>Sphaerostephanos</i> | <i>Sphaerostephanos</i> , <i>Pneumatopteris</i> , <i>Pronephrium</i> , <i>Strophocaulon</i> |
| <i>Stegnogramma</i> | <i>Stegnogramma</i> |
| <i>Steiropteris</i> | <i>Steiropteris</i> |
| <i>Strophocaulon</i> *** | <i>Sphaerostephanos</i> |
| <i>Thelypteris</i> | <i>Thelypteris</i> |
| <i>Trigonospora</i> | <i>Trigonospora</i> |

of loci recovered from tissue that was silica-dried in the field (mean loci = 379, N = 375) or tissue taken from herbarium specimens (mean loci = 377, N = 246), and the age of the specimen had little effect on the number of loci recovered ($R^2 = 0.03$, $p = 0.007$). The oldest specimen sequenced for this study was collected in 1889. The final supermatrix alignment (exons plus flanking regions) included 621 samples with 533,059 nucleotide sites, and is 49.6% full; 61% of these sites are parsimony-informative, 16% are singletons, and 23% are invariant. The supermatrix alignment and data organized by voucher specimen and by locus are available on Dryad (Fawcett et al. 2021).

Phylogenetic Analyses—The topologies of the phylogenetic trees inferred both through maximum likelihood analysis of the concatenated matrix (Figs. 2, 3) and multi-species coalescent analysis (Fawcett et al. 2021) are largely congruent with each other and with previously published trees based primarily on Sanger sequencing of cpDNA (Smith and Cranfill 2002; He and Zhang 2012; Almeida et al. 2016; Patel et al. 2019). Our focus on problematic taxa, a three-fold increase in taxon sampling, and a large nuclear DNA dataset enabled us to find support for previously unresolved nodes and

provides evidence for the resolution of many previously intractable taxonomic problems.

The average bootstrap support for all nodes in the ML analysis was 97%. All crown nodes corresponding to our generic classification have 100% bootstrap support except *Christella* (92%). Some upper backbone nodes are variable or have low support (e.g. the chingoid clade (Figs. 2, 3F) has 100% BS support, but low concordance factors, gCF = 0.5, sCF = 35), and a few rogue taxa are present, discussed in detail below. The two subfamilies Phegopteridoideae and Thelypteridoideae each resolve as monophyletic if the root is placed between them, as done here based on robust results of previous phylogenetic analyses (Smith and Cranfill 2002; He and Zhang 2012; Almeida et al. 2016).

To evaluate the tree, and to better understand widespread species throughout their ranges, we included multiple accessions of 77 species in the analyses. All species represented by multiple accessions resolved within the expected genus-level clade. Among these, more than half of species represented by more than one accession (N = 40) form a clade, as expected. Of the remainder, an additional 21 had a near sister relationship in the phylogeny, while 13 were resolved as less closely related. Three additional species represented by more than two accessions resolved in a combination of the above states. Some of these species include varieties that are not sister to the typical variety of that species (e.g. *Christella patens*, *Christella ovata*, and *Steiropteris glandulosa*). In other cases, currently accepted species concepts are broadly applied, and are potentially polyphyletic (e.g. *Chingia longissima* and *Coryphopteris japonica*). Other widespread and variable taxa, however, were resolved as monophyletic; for example, all three varieties of *Christella hispidula*, comprising seven accessions from its native range in North America, South America, Africa, and Malesia, constitute a clade.

Assessment of PPG I Genera—A primary goal of this study is to test the taxonomic hypotheses of the Thelypteridaceae proposed by PPG I (2016). Of the 30 genera in that classification, 17 are supported without modification. These include *Ampelopteris*, *Coryphopteris*, *Cyclogramma*, *Cyclosorus*, *Glaphyopteridopsis*, *Goniopteris*, *Macrothelypteris*, *Meniscium*, *Mesophlebion*, *Metathelypteris*, *Oreopteris*, *Phegopteris*, *Pseudocyclosorus*, *Pseudophegopteris*, *Steiropteris*, *Thelypteris*, and *Trigonospora*. The remaining 13 genera sensu PPG I (2016) are presented below, with an explanation of their phylogenetic status. To facilitate the communication of phylogenetic results, major clades have been given informal names (Fig. 2), several of which have been applied in previous molecular analyses of the family (e.g. Smith and Cranfill 2002; Almeida et al. 2016; Patel et al. 2019; Fawcett and Smith 2021) and a summary of changes is provided in Table 1. All taxonomic authorities for species included in the analyses are listed in the appendix.

AMAUROPELTA—Although *Amauropelta* is monophyletic, the genus *Parathelypteris* is not, with some species nested within *Coryphopteris* and others in three well supported clades along a basal grade terminating in all sampled species of *Amauropelta* s. s. Although each of these three clades is well supported, their relationships to one another are in conflict among individual gene trees (Fig. 3B; Fawcett et al. 2021).

AMBLOVENATUM—The members of this genus (homotypic synonym: *Amphineuron*) resolve in two distantly related clades; one includes the type species *Amblovenatum*

Cyclosoroids

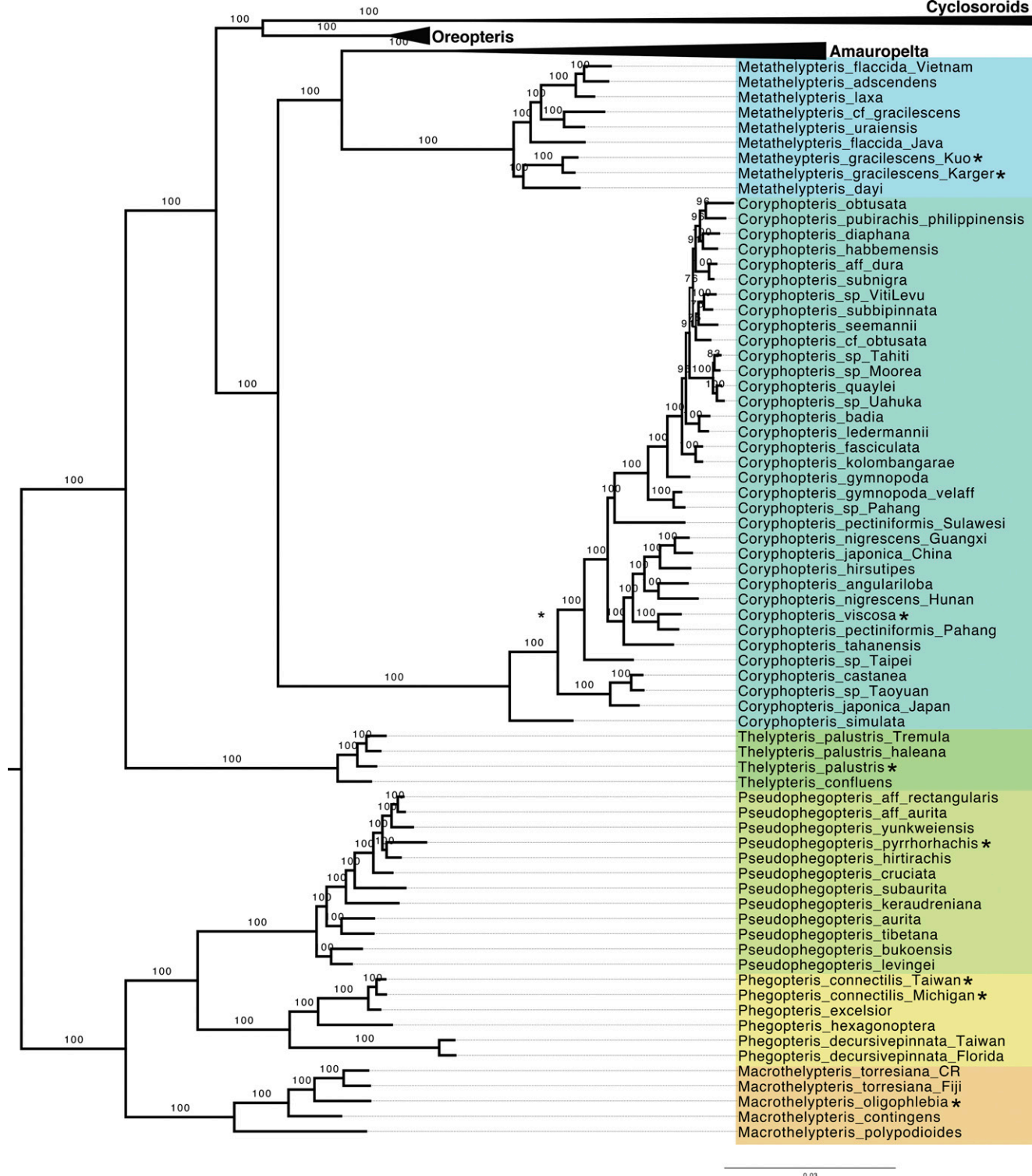


FIG. 3A. The Phegopteridoideae (*Macrothelypteris*, *Phegopteris*, and *Pseudophegopteris*) and early diverging genera of the Thelypteridoideae in the maximum likelihood phylogeny of the 407-locus concatenated alignment. The nodes are annotated with ultrafast bootstrap support values, and genera are emphasized by distinct colors. Type species of genera are denoted with an asterisk (*).

opulentum, but the others resolve with the previously monotypic genus *Mesopteris tonkinensis*. The phylogenetic position of *Amblovenatum* s. s. variously resolves among sphaerostephanoids in the ML bootstrap consensus (Fig. 2), but as sister to sphaerostephanoids plus pseudocyclosoroids in the ML tree (Fig. 3G) and coalescent tree (Fawcett et al. 2021).

CHINGIA—This genus represents a well-supported, nearly exclusive clade, except that a single species (unusual in having fully bipinnate laminae), *Plesioneuron marattioides*, is nested within it.

CHRISTELLA—The members of *Christella* resolve in four distantly related clades (Fig. 4), with the predominantly Asian group corresponding to *Christella* sect. *Christella*, and mostly



FIG. 3C. The genus *Oreopteris*, and non-christelloid members of the cyclosoroid clade, including the stegnogrammoid subclade (*Hoiokula*, *Cyclogramma*, *Stegnogramma*, and *Leptogramma*) in the maximum likelihood phylogeny of the 407-locus concatenated alignment. The nodes are annotated with ultrafast bootstrap support values, and genera are emphasized by distinct colors. Type species of genera are denoted with an asterisk (*).



FIG. 3D. Members of the goniopteroid clade in the maximum likelihood phylogeny of the 407-locus concatenated alignment. The nodes are annotated with ultrafast bootstrap support values, and genera are emphasized by distinct colors. Type species of genera are denoted with an asterisk (*).

among species of *Coryphopteris* and the other three clades include the North American sister species *P. noveboracensis* (L.) Ching and *P. nevadensis* (Baker) Holtum, which are sister to *Amauropelta*, and two Asian clades, one including the type species *P. glanduligera* (Kunze) Ching, and the other including *P. beddomei* (Baker) Ching. Although each of these three clades is well supported as monophyletic,

the relationships among them (*Amauropelta* plus North American *Parathelypteris* and the two Asian clades) are in conflict among individual gene trees (Fawcett et al. 2021).

PLESIONEURON—Sequence data were available for only a single species of *Plesioneuron* when PPG I (2016) was published. This genus as recognized by PPG I (2016) corresponds to a nearly exclusive clade with the exception of *Pneumatopteris*



FIG. 3E. The genus *Goniopteris* in the maximum likelihood phylogeny of the 407-locus concatenated alignment. The nodes are annotated with ultrafast bootstrap support values, and the colors correspond to geographic regions where the molecular vouchers were collected. Type species of genera are denoted with an asterisk (*).

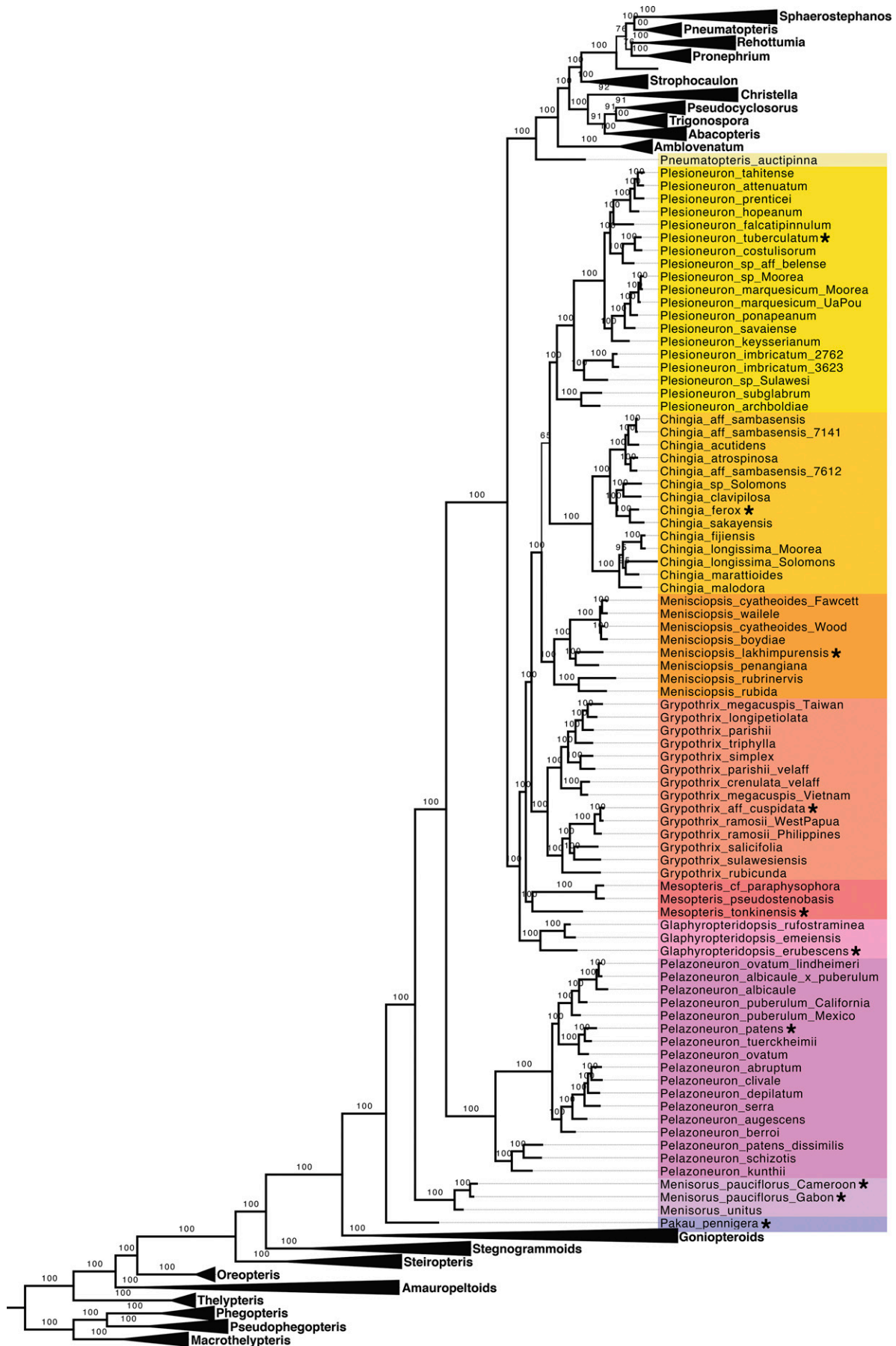


FIG. 3F. The monotypic genus *Pakau*, and the members of the chingioid clade in the maximum likelihood phylogeny of the 407-locus concatenated alignment. The nodes are annotated with ultrafast bootstrap support values, and genera are emphasized by distinct colors. Type species of genera are denoted with an asterisk (*).

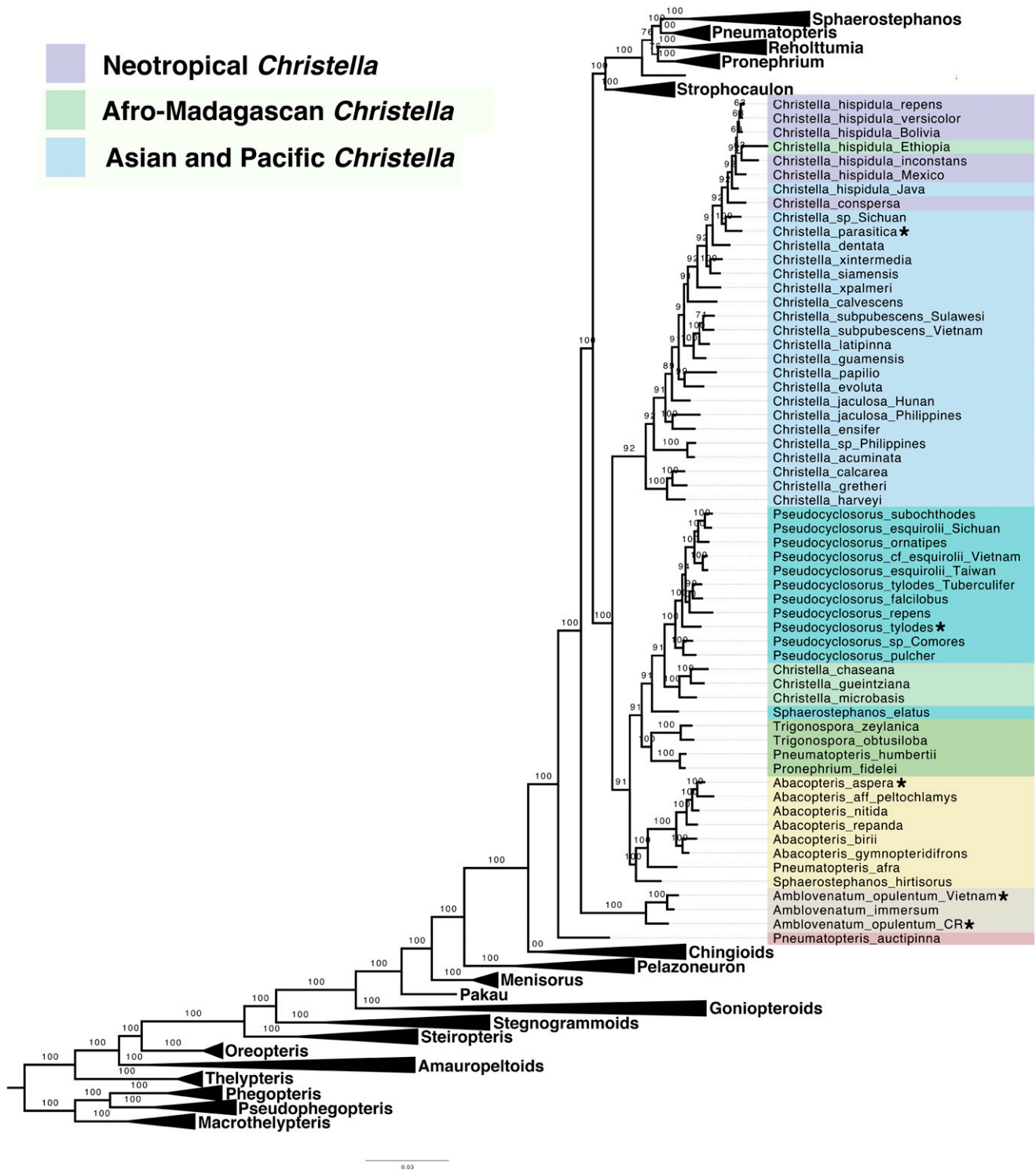


FIG. 3G. The genus *Amblovenatum*, and members of the pseudocyclosoroid clade in the maximum likelihood phylogeny of the 407-locus concatenated alignment. The nodes are annotated ultrafast bootstrap support values, and colors indicate the biogeographic affinities of *Christella* s. s., and emphasize major clades. The position of several lineages (e.g. *Amblovenatum*, the clade of three African *Christella* species) differs in the ML bootstrap consensus tree and/or the multispecies coalescent tree (Fawcett et al. 2021). Type species of genera are denoted with an asterisk (*).

keysseriana Holttum, which is nested within it, and *Plesioneuron marattioides* (Alston) Holttum, which resolves in *Chingia* (Fig. 3F).

PNEUMATOPTERIS—This is by far the most polyphyletic genus recognized by Holttum (1971) and PPG I (2016) (Fig. 4). Its species are scattered in more than a dozen lineages

throughout the tree, resolving within clades corresponding to *Mensorus*, *Plesioneuron*, and *Sphaerostephanos*. Three lineages are distinct and do not fall within currently recognized genera: two Hawaiian species are sister to *Stegnogramma* plus *Cyclogramma*; the New Zealand and Australian endemic *Pneumatopteris pennigera* (G. Forst.) Holttum resolves on a

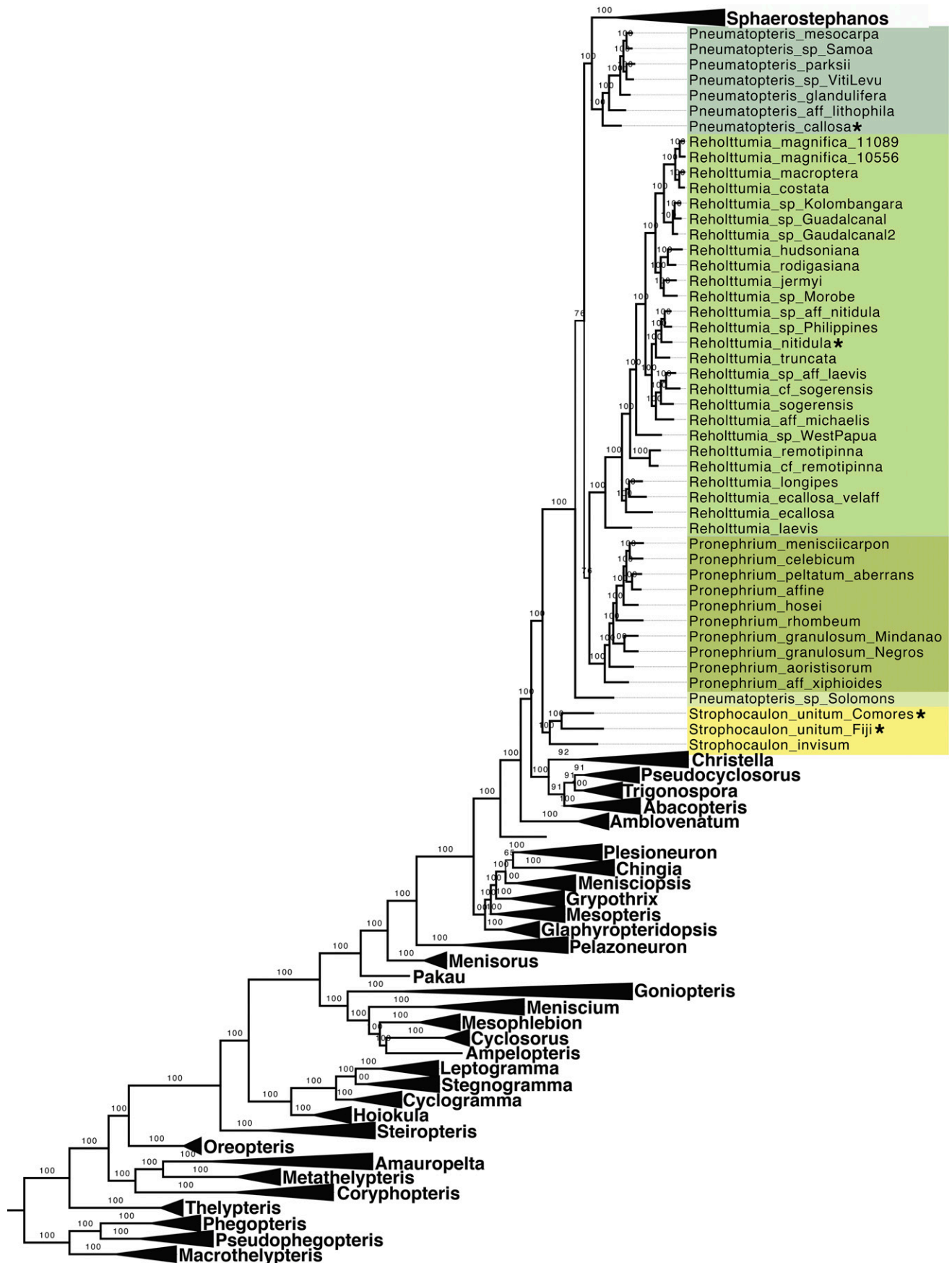


FIG. 3H. Members of the sphaerostephanoid clade in the maximum likelihood phylogeny of the 407-locus concatenated alignment. The nodes are annotated with ultrafast bootstrap support values, and genera are emphasized by distinct colors. Type species of genera are denoted with an asterisk (*).



FIG. 3I. The genus *Sphaerostephanos* in the maximum likelihood phylogeny of the 407-locus concatenated alignment. The nodes are annotated ultrafast bootstrap support values, and colors correspond to biogeographical regions illustrated by Mayr (1944), corresponding to collection localities of the molecular vouchers. Type species of genera are denoted with an asterisk (*).



FIG. 4. A phylogeny of the Thelypteridaceae illustrating the polyphyly of *Christella*, *Pneumatopteris*, and *Pronephrium* sensu PPG I (2016), and their recently proposed disposition (Fawcett and Smith 2021).

long branch at the base of the christelloid clade; and the majority of species constitute a single clade sister to *Sphaerostephanos* plus a relatively small clade of primarily Pacific Island *Pneumatopteris* species including the type species, *P. callosa*. Other taxa resolve as sister to *Trigonospora*, or to one of the four clades of *Pronephrium*, while two other taxa, *Pneumatopteris auctipinna* and an undescribed species from the Solomon Islands, resolve on long branches diverging from the backbone within the christelloid clade, but with low support.

PRONEPHRIUM—The members of this polyphyletic genus all share once-pinnate fronds with entire to shallowly incised margins, but its species resolve in four distinct, well-supported clades, while a few species are scattered throughout the *Sphaerostephanos* clade (Figs. 3H, 4). One of these four clades corresponds perfectly to *Pronephrium* sect. *Grypothrix*, and the other three correspond in part to the infrageneric taxa of *Pronephrium* proposed by Holttum (1982). Although the type species, *P. lineatum* (Blume) Presl, was not sampled, the type specimen exhibits the combination of dimorphic fronds and the presence of yellow spherical glands on the sporangia, which are characteristic of *Pronephrium* sensu Fawcett and Smith (2021) and are uncommon among other genera.

SPHAEROSTEPHANOS—Most members of this large and morphologically complex genus represent a nearly exclusive clade (Fig. 3I). Several species recognized in *Pronephrium* and *Pneumatopteris* fall within it, and two distinctive, widespread species with long-creeping rhizomes, *S. unitus* (L.) Holttum and *S. invisus* (G. Forst.) Holttum, form a clade sister to the core christelloids (the sphaerostephanoids, pseudocyclosoroids, plus *Amblovenatum*) (Fig. 3H). A few species, mainly of India and Africa, resolve variously in the christelloid or pseudocyclosoroid clades (Fig. 3G).

STEGNOGRAMMA—This genus (including *Leptogramma* and *Dictyocline* T. Moore) is monophyletic as recognized by PPG I

(2016). However, our phylogenetic results lend equal support for the recognition of two sister genera, *Stegnoگرامma* (including *Dictyocline*) and *Leptogramma* (Fig. 3C).

Discordance Among Gene Trees—Congruence among gene trees, and among phylogenies inferred using concatenated and coalescent methods, was generally high, but with conflicting support for some taxa and clades (Fawcett et al. 2021). The average gene concordance factor (gCF) for crown nodes corresponding to genera is 43%. The highest gCF values corresponded to species-poor genera on long branches, exemplified by *Thelypteris* s. s. (gCF = 98%), while the lowest value was seen in *Christella* (gCF = 0.25%), a clade which contains rogue taxa (discussed below). The average site concordance factor (sCF) for generic clades is 69%, ranging from 97% in *Cyclosorus* s. s. to 32% in *Ampelopteris*.

Among taxa with conflicting support is a small group of African species, including *Christella gueintziana* and *C. chaseana*, which resolve as sister to the rest of *Christella* sect. *Christella* in the coalescent analysis; however, these species sometimes resolve within the pseudocyclosoroid clade in individual gene trees and in the ML tree (Fig. 3G). The conflicting position of this rogue clade contributes to the uniquely low bootstrap support of the crown node of *Christella*. There is also some conflict among gene trees for *Christella (Pelazoneuron) kunthii*, *C. (P.) schizotis*, and *C. (P.) patens* var. *dissimilis*; all three are supported as members of the *Pelazoneuron* clade, but are also inferred to be members of the *Christella* sect. *Christella* clade in some individual gene trees.

The phylogenetic position of the clade comprising three species of *Amblovenatum* s. s. resolve variously in the sphaerostephanoid clade in the ML bootstrap consensus tree, (Fig. 2) and coalescent tree (Fawcett et al. 2021), or as sister to the sphaerostephanoids plus pseudocyclosoroids (ML tree, Fig. 3G).

Two of the Hawaiian species of *Pneumatopteris* resolve as sister to *Stegnoگرامma* plus *Cyclogramma* with 100% support in both concatenated and coalescent analyses; however, individual gene trees resolve these species as nested among members of *Pronephrium* or highly nested within *Leptogramma*.

Finally, a few morphologically aberrant taxa of Africa, Madagascar, and India resolve as sister to large clades with low support, and often are in conflicting positions among individual gene trees. These include *Sphaerostephanos elatus*, *Sphaerostephanos hirtisorus*, and *Pneumatopteris afra*; all three are rogue taxa within the pseudocyclosoroid clade (Fig. 3G).

DISCUSSION

Support for Taxonomic Revision—Our results support the continued recognition of 17 of the 30 genera of the Thelypteridaceae as circumscribed by PPG I (2016), and taxonomic revision of the remaining 13 genera (Table 1), as proposed by Fawcett and Smith (2021). Two of these genera, *Parathelypteris* (H.Ito) Ching, and *Nannothelypteris* Holttum, we treat in synonymy. Of the remaining 11 genera, some require only minor revisions to be monophyletic, while others, notably *Pneumatopteris* and *Pronephrium*, require more substantial changes. We recognize four recently described genera, *Hoiokula*, *Pakau*, *Reholtumia*, and *Strophocaulon*. We recommend the elevation in rank from section to genus for *Christella* sect. *Pelazoneuron*, *Pronephrium* sect. *Grypothrix*, and *Pronephrium* sect. *Menisciopsis* Holttum, and the resurrection of the genus *Abacopteris*. We recognize the expanded circumscription of *Amauropelta* to

include *Parathelypteris* pro parte, and recognize three new subgenera within *Amauropelta*. All necessary taxonomic combinations, a key to genera, and descriptions of the 37 genera here recognized are available in Fawcett and Smith (2021). These genera, which include ca. 1200 species worldwide, are recognized on the basis of both monophyly, and improved morphological diagnosability. A brief discussion of newly recognized genera and subgenera follows:

ABACOPTERIS—This genus was treated as a synonym of *Pronephrium* by Holttum (1971, 1982), but based on the morphology of the type species, *Pronephrium lineatum*, we recognize *Pronephrium* s. s. as a member of the distantly related sphaerostephanoid clade. *Abacopteris*, in the sense we apply the name, is more closely allied to *Christella* and *Pseudocyclosorus* (Fig. 3G).

AMAUIROPELTA—Following Kuo et al. (2019) we expand the concept of *Amauropelta* to include three paraphyletic clades of *Parathelypteris*, now treated as *Amauropelta* subg. *Nibaa* (the two North American species), *Amauropelta* subg. *Parathelypteris* (including the type of *Parathelypteris*, *P. glanduligera*), and *Amauropelta* subg. *Venus* (including *P. beddomei*) (Fig. 3B).

GRYPOTHRIX—This genus corresponds perfectly to *Pronephrium* sect. *Grypotherix* (Holttum 1982), a group that is defined by hooked (hamate) hairs somewhere on the body of the plant. It is in the chingoid clade (Fig. 3F).

HOIOKULA—This new genus corresponds to the two native Hawaiian species treated in *Pneumatopteris* by Holttum (1982) but are more closely related to *Leptogramma*, *Stegnogramma*, and *Cyclogramma* in our analyses (but see comments under Discordance Among Gene Trees) (Fig. 3C).

LEPTOGRAMMA—Our data give equal support to the recognition of *Stegnogramma* s. l. or *Stegnogramma* s. s. plus *Leptogramma*. In light of the morphological differences between these two clades, we follow Kuo et al. (2020), in which the type species was sampled, in recognizing *Leptogramma* (including *Craspedosorus* Ching & W.M.Chu) as a distinct genus (Fig. 3C).

MENISCIOPSIS—This genus includes continental Asian and Malesian members of the genus *Pronephrium* as well as the three Hawaiian endemic species of *Christella* (Fig. 3F).

PAKAU—This monotypic genus corresponds to *Pneumatopteris pennigera*, which is endemic to New Zealand and eastern Australia. It occurs on a long branch, and is seemingly distantly related to any other taxon in the family (Fig. 3F).

PELAZONEURON—In his treatment of African Thelypteridaceae, Holttum (1974) described *Pelazoneuron* as a section of *Christella* comprising several African species he believed to be allied to neotropical taxa; he designated the American species *Christella patens* as the type of this section. Based on our results, neither those African taxa nor *Christella* sect. *Christella* are closely related to *C. patens*, but following Holttum's typification, this name corresponds to a well-defined group of American species (Smith 1971) (Fig. 3F).

REHOLTTUMIA—The greatest number of *Pneumatopteris* species resolve in this clade; however, the type of *Pneumatopteris*, *P. callosa*, is in a small clade more closely related to *Sphaerostephanos*, which is the older name. Rather than expand *Sphaerostephanos*, a polymorphic but recognizable genus already containing more than 200 species, we recognize this clade as a segregate of *Pneumatopteris* (Fig. 3H). Its name honors R. E. Holttum, whose keen insights and dedication laid the groundwork that made the present study possible.

STROPHOCAULON—This genus of two species includes only *Sphaerostephanos unitus* and *S. invisus*, (Fig. 3H) both of which are widespread and have long-creeping rhizomes (Fig. 1L), distinct from the short-creeping or ascending rhizomes typical of most species of *Sphaerostephanos* (Fig. 1K).

Discordance Among Gene Trees—Various factors may contribute to conflict among gene trees, including reticulation and introgression, gene duplication and loss, and incomplete lineage sorting (Degnan and Rosenberg 2009), horizontal gene transfer (Davis et al. 2005; Li et al. 2014, 2018), and error in gene tree inference. Different patterns of discordance may indicate either lack of support or conflicting support (Pease et al. 2018). For example, among recent rapid radiations, especially for species with large populations, incomplete lineage sorting may be expected, with stochastic patterns of conflict across gene trees. For taxa of hybrid origin, in contrast, gene trees may exhibit consistent patterns of conflicting support, e.g. a taxon resolving in two distinct (and rarely, highly divergent) clades. Because of the large size of our dataset, and the use of, at most, a single sequence to represent each taxon at each locus, we expect taxa of allopolyploid origin to resolve with one progenitor, or sister to a larger clade including a progenitor, with high support, as has been previously demonstrated in phylogenetic analyses that include hybrid taxa (McDade 1992). The primary goal of this study is to resolve generic circumscription, and the great degree of congruence among our gene trees gives us confidence in our conclusions. However, we are continuing to investigate the potential of hybrid origin for the small minority of rogue taxa and lineages.

Biogeographic Patterns—The taxonomic concepts proposed by Holttum and adopted by PPG I (2016) in some cases include geographically widespread and polymorphic genera, best exemplified by *Pneumatopteris* s. l., the range of which includes Hawaii, Africa, Madagascar, East Asia, and New Zealand. Holttum (1977: 226) was clearly aware of the distinctive morphology of its most aberrant species, regarded here as *Hoiokula* (Hawai'i), *Pakau* (Australia, New Zealand), *Plesioneuron* (Malesia and Oceania), and *Reholttumia* (scattered from Madagascar to Oceania). These genera were recognized only with the benefit of a molecular dataset to guide morphological observations. Our newly segregated genera tend to be more geographically restricted, as is the case for those mentioned above, two of which are endemic to regions beyond the range of *Pneumatopteris* s. s., which is restricted to Oceania and Malesia.

Regional geographic affinities, exemplified by *Goniopteris* (Fig. 3E) and *Amauropelta* subg. *Amauropelta*, show distinct phylogeographic patterns, with major clades largely restricted to the Caribbean, Mexico/Mesoamerica, the Andes, or Brazil. Other lineages (e.g. *Sphaerostephanos*; Fig. 3I) show much less clear-cut biogeographical patterns within and between clades, suggesting extensive dispersal and possibly also extinction events. This raises the intriguing question why some genera appear to undergo limited dispersal and extensive regional diversification, whereas others have a much more dynamic biogeographical history.

Classifying the Thelypteridaceae of Africa has proven to be especially challenging, partly because the present diversity has likely been shaped by high rates of extinction (Aldasoro et al. 2004), leaving a flora of disparate relicts that are difficult to contextualize within extant diversity. For example, the four Afro-Madagascan species of *Pneumatopteris* s. l. included

in our analysis are each resolved in a distinct lineage, most closely allied to *Abacopteris*, *Menisorus*, *Reholtumia*, and *Trigonospora*; yet each is quite morphologically distinct from the typical species in each of these nearest clades.

Morphological Observations—The often subtle morphological characters needed to distinguish genera and identify species have contributed to the reputation of this family as taxonomically difficult (Fraser-Jenkins et al. 2017). Many of the genera can only be identified using a combination of characters, some seen only with the aid of a microscope, and the most salient features are often shared among distantly related taxa (Fawcett and Smith 2021). For example, all species within the genus *Pronephrium* s. l. share once-pinnate laminae with entire or shallowly incised pinna margins. However, our analyses demonstrate that members of *Pronephrium* s. l. resolve in distinct clades (Fig. 4), three of which are now recognized as the segregate genera *Abacopteris*, *Grypothrix*, and *Menisciopsis*, and others in multiple clades across *Sphaerostephanos*. In nearly all instances, these clades are more closely related to pinnate-pinnatifid taxa (the most common blade-division in the Thelypteridaceae) than they are to each other. These genera may be more reliably distinguished from each other by more subtle characters, including the presence of setae or glands on the sporangia and indusia, presence of proliferous buds, position of sori, and distribution and morphology of the indument (Fawcett and Smith 2021).

Conclusions—We present a densely sampled nuclear DNA phylogenomic dataset, representing half of the species diversity in the Thelypteridaceae; this broad sampling facilitates the revision of the generic classification of the family. However, species-level diversity, especially in the Paleotropics, remains poorly understood. For instance, at the time of the most recent treatment of *Sphaerostephanos* (Holttum 1982), of the 185 species recognized, 66 (36%) were known only from the type, or the type plus one or two other collections. Yet, even modern treatments of neotropical genera show the same pattern, with, e.g. 12 (22%) of the 54 Bolivian species of *Amauropelta* known from only one to three collections (Smith and Kessler 2017). This likely reflects a combination of factors, including narrow endemism, rarity, paucity of herbarium collections, and failure of general collectors to recognize subtle variations in the field. We do not doubt that many additional species remain undescribed, especially in Malesia. It is our hope that this work, and the complementary publication of a taxonomic monograph (Fawcett and Smith 2021) that provides a key to genera, detailed generic descriptions, and diagnoses, will provide a framework to facilitate the discovery, recognition, and conservation of thelypterid biodiversity.

ACKNOWLEDGMENTS

Fawcett thanks her thesis committee members, Catherine Paris and Melissa Pespenti, at the University of Vermont, for their support, Bruce Baldwin (JEPS) and the members of the Barrington-Sundue lab and associates of the Pringle Herbarium (VT) for helpful discussions, especially Arthur V. Gilman, Hilda White, Eunice Froeliger, Nikisha Patel, Morgan Southgate, and Bertrand Black, and Alex Silence from the UVM CS Crew for assistance in troubleshooting code. We gratefully acknowledge Andrew Evans at the Vermont Advanced Computing Core (VACC) for his time and expertise. We also acknowledge the generosity of collectors and herbarium curators who contributed specimens and tissue for our work, including Yi-Han Chang (TAIF), Daniele Ciczuzza (UBD), Dirk Karger (Z), Jürgen Kluge (MB), Zhong-Yang Li (GNNU), David Lorence (PTBG), Joel Nitta (HUH), Anton Reznicek (MICH), Carl Rothfels (UC), Eric Schuettelpelz (US), and Ken Wood (PTBG). Finally, our work would

not have been possible without the groundwork on Thelypteridaceae laid by Richard Eric Holttum (1895–1990), mostly from 1969–1982 and begun at age 74. He was especially invaluable to ARS in stimulating interest in the family and addressing his ideas through a stream of correspondence. Funding for sequencing and data analyses was provided to the GoFlag (Genealogy of Flagellate Plants) Consortium by NSF DEB-1541506. Funding for phylogenetic analyses on the VACC was provided by the Pringle Herbarium, Department of Plant Biology (University of Vermont). Fawcett gratefully acknowledges financial support from the National Geographic Society Early Career Award, the Roberto Fialho Award (University of Vermont), and the American Society of Plant Taxonomists. We thank the authorities of Bolivia, Borneo, Brazil, China, Colombia, Costa Rica, Dominican Republic, Ecuador, Fiji, Grand Comores, Indonesia, Japan, Malaysia, Mexico, Papua New Guinea, Philippines, Puerto Rico, Solomon Islands, Taiwan, USA, Vietnam, and West Papua for granting us research, collecting, and export permits. We extend our gratitude to two anonymous reviewers and to Dr. Ashley Field (CNS) for helpful comments and edits to the manuscript. This study was not preregistered in an independent, institutional registry.

AUTHOR CONTRIBUTIONS

SF, ARS, GB, and EBS designed and implemented the study. GB, EBS, WLT, and GFC generated the data, SF and GB analyzed the data, and SF, MS, MK, LYK, CWC, and WLT contributed critical tissue samples and associated herbarium vouchers. SF drafted the manuscript, with contributions from all co-authors.

LITERATURE CITED

- Aldasoro, J. J., F. Cabezas, and C. Aedo. 2004. Diversity and distribution of ferns in sub-Saharan Africa, Madagascar and some islands of the South Atlantic. *Journal of Biogeography* 31: 1579–1604.
- Almeida, T. E., S. Hennequin, H. Schneider, A. R. Smith, J. A. N. Batista, A. J. Ramalho, K. Proite, and A. Salino. 2016. Towards a phylogenetic generic classification of Thelypteridaceae: Additional sampling suggests alterations of neotropical taxa and further study of paleotropical genera. *Molecular Phylogenetics and Evolution* 94: 688–700.
- Bentley, D. R., S. Balasubramanian, H. P. Swerlow, et al. 2008. Accurate whole genome sequencing using reversible terminator chemistry. *Nature* 456: 53–59.
- Breinholt, J. W., S. B. Carey, G. P. Tiley, E. C. Davis, L. Endara, S. F. McDaniel, L. G. Neves, E. B. Sessa, M. von Konrat, S. Chantanaorrapint, S. Fawcett, S. M. Ickert-Bond, P. H. Labiak, J. Larraín, M. Lehnert, L. R. Lewis, N. S. Nagalingum, N. Patel, S. A. Rensing, W. Testo, A. Vasco, J. C. Villarreal, E. W. Williams, and J. G. Burleigh. 2021. A target enrichment probe set for resolving the flagellate plant tree of life. *Applications in Plant Sciences* 9: e11406.
- Camacho, C., G. Coulouris, V. Avagyan, N. Ma, J. Papadopoulos, K. Bealer, and T. L. Madden. 2009. BLAST+: Architecture and applications. *BMC Bioinformatics* 10: 1–9.
- Chernomor, O., A. von Haeseler, and B. Q. Minh. 2016. Terrace aware data structure for phylogenomic inference from supermatrices. *Systematic Biology* 65: 997–1008.
- Chang, Z., G. Li, J. Liu, Y. Zhang, C. Ashby, D. Liu, C. L. Cramer, and X. Huang. 2015. Bridger: A new framework for *de novo* transcriptome assembly using RNA-seq data. *Genome Biology* 16: 30.
- Ching, R. C. 1936. A revision of the Chinese and Sikkim-Himalayan *Dryopteris* with reference to some species from neighboring regions. *Bulletin of the Fan Memorial Institute of Biology. Botany* 6: 237–352.
- Ching, R. C. 1963. A reclassification of the family Thelypteridaceae from the mainland of Asia. *Acta Phytotaxonomica Sinica* 8: 289–335.
- Ching, R. C. 1978. The Chinese fern families and genera: Systematic arrangement and historical origin. *Zhiwu Fenlei Xuebao* 16: 1–19.
- Christensen, C. 1913. A monograph of the genus *Dryopteris*, part I. The tropical American pinnatifid-bipinnatifid species. *Kongelige Danske Videnskaberne Selskabs Skrifter, Naturvidenskabelige og Mathematisk Afdeling, ser. 7* 10: 55–282.
- Christensen, C. 1920. A monograph of the genus *Dryopteris*, part II. The tropical American bipinnate-decompound species. *Kongelige Danske Videnskaberne Selskabs Skrifter, Naturvidenskabelige og Mathematisk Afdeling, ser. 8* 6: 3–132.
- Davis, C. C., W. R. Anderson and K. J. Wurdack. 2005. Gene transfer from a parasitic flowering plant to a fern. *Proceedings of the Royal Society B: Biological Sciences* 272: 2237–2242.

- Degnan, J. H. and N. A. Rosenberg. 2009. Gene tree discordance, phylogenetic inference and the multispecies coalescent. *Trends in Ecology & Evolution* 24: 332–340.
- Doyle, J. J. and J. L. Doyle. 1987. A rapid DNA isolation procedure for small quantities of fresh leaf tissue. *Phytochemical Bulletin* 19: 11–15.
- Ebihara, A. 2011. *RbcL* phylogeny of Japanese pteridophyte flora and implications on infrafamilial systematics. *Bulletin of the National Museum of Nature and Science, Series B* 37: 63–74.
- Edgar, R. C. 2010. Search and clustering orders of magnitude faster than BLAST. *Bioinformatics* 26: 2460–2461.
- Fawcett, S. and A. R. Smith. 2021. *A Generic Classification of the Thelypteridaceae*. *Sida, Botanical Miscellany* 59. Fort Worth: Botanical Research Institute of Texas Press.
- Fawcett, S., A. R. Smith, M. Sundue, J. G. Burleigh, E. B. Sessa, L.-Y. Kuo, C.-W. Chen, W. L. Testo, and M. Kessler. GoFlag Consortium, and D. S. Barrington. 2021. Data from: A global phylogenomic study of the Thelypteridaceae. Dryad Digital Repository. <https://doi.org/10.5061/dryad.gxd2547j4>.
- Fraser-Jenkins, C. R., K. N. Gandhi, B. S. Kholia, and A. Benniamin. 2017. *An Annotated Checklist of Indian Pteridophytes*. Dehra Dun: Bishen Singh Mahendra Pal Singh.
- Gnirke, A., A. Melnikov, J. Maguire, P. Rogov, E. M. LeProust, W. Brockman, T. Fennell, G. Giannoukos, S. Fisher, C. Russ, S. Gabriel, D. B. Jaffe, E. S. Lander, and C. Nusbaum. 2009. Solution hybrid selection with ultra-long oligonucleotides for massively parallel targeted sequencing. *Nature Biotechnology* 27: 182–189.
- He, L. J. and X. C. Zhang. 2012. Exploring generic delimitation within the fern family Thelypteridaceae. *Molecular Phylogenetics and Evolution* 65: 757–764.
- Hoang, D. T., O. Chernomor, A. Von Haeseler, B. Q. Minh, and L. S. Vinh. 2017. UFBoot2: Improving the ultrafast bootstrap approximation. *Molecular Biology and Evolution* 35: 518–522.
- Holtum, R. E. 1971. Studies in the family Thelypteridaceae III. A new system of genera in the Old World. *Blumea* 19: 17–52.
- Holtum, R. E. 1974. Thelypteridaceae of Africa and adjacent islands. *Journal of South African Botany* 40: 123–168.
- Holtum, R. E. 1977. The family Thelypteridaceae in the Pacific and Australasia. *Allertonia* 1: 169–234.
- Holtum, R. E. 1982. Thelypteridaceae. *Flora Malesiana, ser. II* 1: 334–560.
- Kalyaanamoorthy, S., B. Q. Minh, T. K. Wong, A. von Haeseler, and L. S. Jermiin. 2017. ModelFinder: Fast model selection for accurate phylogenetic estimates. *Nature Methods* 14: 587–589.
- Katoh, K. and D. M. Standley. 2013. MAFFT multiple sequence alignment software version 7: Improvements in performance and usability. *Molecular Biology and Evolution* 30: 772–780.
- Kuo, L. Y., T. C. Hsu, Y. S. Chao, W. T. Liu, H. M. Chang, C. W. Chen, Y. M. Huang, F. W. Li, Y. F. Huang, W. Shao, P. F. Lu, C. W. Chen, Y. H. Chang, and W. L. Chiou. 2019. Updating Taiwanese pteridophyte checklist: A new phylogenetic classification. *Taiwania* 64: 367–395.
- Kuo, L. Y., Y. H. Chang, Y. H. Huang, W. Testo, A. Ebihara, G. Rouhan, L. G. Quintanilla, J. E. Watkins Jr., Y. M. Huang, and F. W. Li. 2020. A global phylogeny of *Stegnoگرامma* ferns (Thelypteridaceae): Generic and sectional revision, historical biogeography and evolution of leaf architecture. *Cladistics* 36: 164–183.
- Leebens-Mack, J. H., M. S. Barker, E. J. Carpenter, et al. 2019. One thousand plant transcriptomes and the phylogenomics of green plants. *Nature* 574: 679–685.
- Li, F.-W., J. C. Villarreal, S. Kelly, C. J. Rothfels, M. Melkonian, E. Frangedakis, M. Ruhsam, E. M. Sigel, J. P. Der, J. Pittermann, D. O. Burge, L. Pokorny, A. Larsson, T. Chen, S. Weststrand, P. Thomas, E. Carpenter, Y. Zhang, Z. Tian, L. Chen, Z. Yan, Y. Zhu, X. Sun, J. Wang, D. W. Stevenson, B. J. Crandall-Stotler, A. J. Shaw, M. K. Deyholos, D. E. Soltis, S. W. Graham, M. D. Windham, J. A. Langdale, G. K.-S. Wong, S. Mathews, and K. M. Pryer. 2014. Horizontal transfer of an adaptive chimeric photoreceptor from bryophytes to ferns. *Proceedings of the National Academy of Sciences USA* 111: 6672–6677.
- Li, F.-W., P. Brouwer, L. Carretero-Paulet, S. Cheng, J. De Vries, P.-M. Delaux, A. Eily, N. Koppers, L. Y. Kuo, Z. Li, M. Simenc, I. Small, E. Wafula, S. Angarita, M. S. Barker, A. Bräutigam, C. dePamphilis, S. Gould, P. S. Hosmani, Y.-M. Huang, B. Huettel, Y. Kato, X. Liu, S. Maere, R. McDowell, L. A. Mueller, K. G. J. Nierop, S. A. Rensing, T. Robinson, C. J. Rothfels, E. M. Sigel, Y. Song, P. R. Timilsena, Y. Van de Peer, H. Wang, P. K. I. Wilhelmsson, P. G. Wolf, X. Xu, J. P. Der, H. Schluempmann, G. K.-S. Wong, and K. M. Pryer. 2018. Fern genomes elucidate land plant evolution and cyanobacterial symbioses. *Nature Plants* 4: 460–472.
- Loyal, D. S. 1963. Some evolutionary trends in family Thelypteridaceae with particular reference to Himalayan species. *Memoirs of the Indian Botanical Society* 4: 22–29.
- Manton, I. 1950. *Problems of Cytology and Evolution in the Pteridophyta*. Cambridge: Cambridge University Press.
- Mayr, E. 1944. Wallace's line in the light of recent zoogeographic studies. *The Quarterly Review of Biology* 19: 1–14.
- McDade, L. A. 1992. Hybrids and phylogenetic systematics II. The impact of hybrids on cladistic analysis. *Evolution* 46: 1329–1346.
- Minh, B. Q., M. A. T. Nguyen, and A. von Haeseler. 2013. Ultrafast approximation for phylogenetic bootstrap. *Molecular Biology and Evolution* 30: 1188–1195.
- Minh, B. Q., H. A. Schmidt, O. Chernomor, D. Schrempf, M. D. Woodhams, A. von Haeseler, and R. Lanfear. 2020. IQ-TREE 2: New models and efficient methods for phylogenetic inference in the genomic era. *Molecular Biology and Evolution* 37: 1530–1534.
- Morton, C. V. 1963. The classification of *Thelypteris*. *American Fern Journal* 53: 149–154.
- Patel, N., S. Fawcett, M. Sundue, and J. Budke. 2019. Evolution of perine morphology in Thelypteridaceae. *International Journal of Plant Sciences* 180: 1016–1035.
- Pease, J. B., J. W. Brown, J. F. Walker, C. E. Hinchliff, and S. A. Smith. 2018. Quartet Sampling distinguishes lack of support from conflicting support in the green plant tree of life. *American Journal of Botany* 105: 385–403.
- Pichi Sermolli, R. E. G. 1970. Fragmenta Pteridologiae—II. *Webbia* 24: 699–722.
- Pichi Sermolli, R. E. G. 1977. Tentamen Pteridophytorum genera in taxonomicum ordinem redigendi. *Webbia* 31: 313–512.
- PPG I. 2016. Pteridophyte Phylogeny Group. A community-derived classification for extant lycophytes and ferns. *Journal of Systematics and Evolution* 54: 563–603.
- Reed, C. F. 1968. Index Thelypteridis. *Phytologia* 17: 249–328.
- Salino, A., T. E. Almeida, and A. R. Smith. 2015. New combinations in neotropical Thelypteridaceae. *PhytoKeys* 57: 1–11.
- Schuettpelz, E. and K. M. Pryer. 2007. Fern phylogeny inferred from 400 leptosporangiate species and three plastid genes. *Taxon* 56: 1037–1050.
- Schuettpelz, E., G. Rouhan, K. M. Pryer, C. J. Rothfels, J. Prado, M. A. Sundue, M. D. Windham, R. C. Moran, and A. R. Smith. 2018. Are there too many fern genera? *Taxon* 67: 473–480.
- Smith, A. R. 1971. Systematics of the neotropical species of *Thelypteris* section *Cyclosorus*. *University of California Publications in Botany* 59: 1–143.
- Smith, A. R. 1990. Thelypteridaceae. Pp. 263–272 in *The Families and Genera of Vascular Plants*, vol. 1., ed. K. Kubitzki. Berlin: Springer-Verlag.
- Smith, A. R. and R. B. Cranfill. 2002. Intrafamilial relationships of the thelypteroid ferns (Thelypteridaceae). *American Fern Journal* 92: 131–150.
- Smith, A. R. and M. Kessler. 2017. Prodrum of a fern flora for Bolivia. XXX. Thelypteridaceae. *Phytotaxa* 331: 1–34.
- Zhang, C., E. Sayyari, and S. Mirarab. 2017. ASTRAL-III: Increased scalability and impacts of contracting low support branches. Pp 53–75 in *Comparative Genomics. RECOMB-CG 2017*, eds. J. Meidanis and L. Nakhleh. Lecture Notes in Computer Science, vol. 10562. Cham: Springer.

APPENDIX 1. Voucher data for specimens used in molecular phylogenetic analyses. Specimens are arranged alphabetically by genus, with collector name and number, species, locality, country, year of collection, and herbaria where deposited, for tissue samples taken in the field. Many vouchers are digitized and images are hosted by the Pteridophyte Collections Consortium <pteridportal.org>.

Abacopteris Fée—Karger 1408, *Abacopteris aspera* (C.Presl) Ching, Bacan, Mauluku Utara, Indonesia, 2010 (UC 2048328, Z); Chen Wade1431, *Abacopteris birii* (R.D.Dixit & Balkr.) S.E.Fawc. & A.R.Sm., Lam Dong, Vietnam, 2010 (TAIF 409716); Kuo 857, *Abacopteris gymnoteridifrons* (Hayata) Ching, Pingtung, Taiwan, 2010 (TAIF); Cicuzza 693, *Abacopteris nitida* (Holtum) S.E.Fawc. & A.R.Sm., Maleo, Sulawesi, 2008 (UC, Z); Karger 1756, *Abacopteris* aff. *peltoclamiys* (C.Chr.) Holtum, West Papua, Indonesia, 2008 (UC 2048607, Z); Karger 1260, *Abacopteris repanda* (Fée) S.E.Fawc. & A.R.Sm., Seram, Indonesia, 2010 (UC 2048311; UC 2048312, Z).

- Amauropelta Kunze**—Mazziero 805, *Amauropelta amambayensis* (Christ) Salino & A.R.Sm., Parana, Brazil, 2011 (VT 197107); *Chang* 20090720-013, *Amauropelta angustifrons* (Miq.) Y.H.Chang, Taipei, Taiwan, 2009 (TAIF); *Chen Wade3649*, *Amauropelta angustifrons* (Miq.) Y.H.Chang, Okinawa, Japan, 2013 (TAIF 440124); *Testo* 738, *Amauropelta aspidioides* (Willd.) Pic.Serm., Puntarenas, Costa Rica, 2015 (VT); *Nitta* 2237, *Amauropelta atrovirens* (C.Ch.) Salino & T.E.Almeida, Alajuela, Costa Rica, 2013 (UC, GH); *Smith* 1746, *Amauropelta atrovirens* (C.Ch.) Salino & T.E.Almeida, San José, Costa Rica, 1986 (UC 1524076); *Jiménez* 1869, *Amauropelta aymarae* (A.R.Sm. & M.Kessler) Salino & T.E.Almeida, La Paz, Bolivia, 2003 (GOET, LPB, MO, UC 1171973); *Rothfels* 2673, *Amauropelta balbisii* (Spreng.) A.R.Sm., Sarapiquí, Costa Rica, 2008 (UC 1970891); *Kluge* 5520, *Amauropelta barcae* (A.R.Sm.) Salino & T.E.Almeida, vel aff., Sarapiquí, Costa Rica, 2003 (UC 1784822); *Kluge* 7446, *Amauropelta beddomei* (Baker) Y.H.Chang, Sulawesi, Korekatimbu, Indonesia, 2007 (UC, BO); *Karger* 363, *Amauropelta beddomei* (Baker) Y.H.Chang var. *eugracilis* (Copel.) Holttum, Mindanao, Philippines, 2009 (UC 2048277, Z); *Kuo* 1376, *Amauropelta* aff. *beddomei* (Baker) Y.H.Chang, Yunnan, China, 2010 (UC); *Kluge* 7706, *Amauropelta bergiana* (Schltdl.) Holttum, Mt. Karthala, Grand Comores, 2008 (GOET, UC); *Rothfels* 4883, *Amauropelta brausei* (Hieron.) A.R.Sm., Junín, Peru, 2016 (HOXA, UC); *Rothfels* 5080, *Amauropelta cheilanthoides* (Kunze) Á.Löve & D.Löve, Pasco, Peru, 2016 (HOXA, UC); *Lellinger* 1883, *Amauropelta christensenii* (Christ ex C.Ch.) Salino & T.E.Almeida, Puntarenas, Costa Rica, 1975 (UC 1610288); *Jiménez* 1545, *Amauropelta cinerea* (Sodiolo) A.R.Sm., Cochabamba, Bolivia, 2002 (GOET, LPB, UC 1780392); *Jiménez* 2680, *Amauropelta comptula* (A.R.Sm.) Salino & T.E.Almeida, La Paz, Bolivia, 2004 (UC 1790495); *Barriga* 4656, *Amauropelta concinna* (Willd.) Pic.Serm., Querétaro, Mexico, 1988 (UC 1604224); *Hill* 21259, *Amauropelta consanguinea* (Fée) Salino & T.E.Almeida, St. Paul Parish, Dominica, 1990 (UC 1563529); *Jiménez* 741, *Amauropelta corazonensis* (Baker) Salino & T.E.Almeida, La Paz, Bolivia, 2001 (LPB, UC 1764778); *Kuo* 1081, *Amauropelta cystopteroides* (D.C.Eaton) S.E.Fawc. & A.R.Sm., Kagoshima, Japan, 2010 (TAIF); *Serrano* 7007, *Amauropelta decurtata* (Kunze) Salino & T.E.Almeida, Chuquisaca, Bolivia, 2005 (UC 1921855); *Rothfels* 5055, *Amauropelta deflexa* (C.Presl) Á.Löve & D.Löve, Pasco, Peru, 2016 (HOXA, UC, F); *Mickel* 3223, *Amauropelta delasotae* (A.R.Sm. & Lellinger) Salino & T.E.Almeida, Cartago, Costa Rica, 1967 (UC 1528494); *Jiménez* 1280, *Amauropelta euchlora* (Sodiolo) A.R.Sm., Cochabamba, Bolivia, 2002 (GOET, LPB, UC 1781382); *Gómez* 19587, *Amauropelta funckii* (Mett.) A.R.Sm., Cartago, Costa Rica, (UC 1510398); *Fawcett* 737, *Amauropelta germaniana* (Fée) Salino & T.E.Almeida, Puntarenas, Costa Rica, 2017 (VT); *Fawcett* 474, *Amauropelta germaniana* (Fée) Salino & T.E.Almeida, Adjuntas, Puerto Rico, 2016 (VT); *Smith* 2597, *Amauropelta* aff. *germaniana* (Fée) Salino & T.E.Almeida, Costa Rica, 1999 (UC 1735262); *Chang* 20090919-027, *Amauropelta glanduligera* (Kunze) Y.H.Chang, Taipei, Taiwan, 2009 (TAIF); *Vivant s.n.*, *Amauropelta gracilis* (Heward) A.R.Sm., (UC 1609989); *Game* 92/21, *Amauropelta grantii* (Copel.) Holttum, Tahiti, Society Islands, 1992 (UC); *Faden* 1976/272, *Amauropelta hakgalensis* Holttum, Hakgala, Sri Lanka, 1976 (UC 1484718); *Axelrod* 11263, *Amauropelta heteroclita* (Desv.) Pic.Serm., Adjuntas, Puerto Rico, 2000 (UC 1794604); *Croat* 78966, *Amauropelta illicita* (Christ) Salino & T.E.Almeida, San José, Costa Rica, 1996 (UC 1740681); *Smith* 2182, *Amauropelta inaequans* (C.Ch.) Salino & T.E.Almeida, Cartago, Costa Rica, 1986 (UC 1526033); *Testo* 1028, *Amauropelta jimenezii* (Maxon & C.Ch.) R.C.Moran & A.R.Sm., Puntarenas, Costa Rica, 2016 (UC 2048961); *Smith* 2245, *Amauropelta lepidula* (Hieron.) A.R.Sm., vel aff., Alajuela, Costa Rica, 1986 (UC 1526132); *Vivant s.n.*, *Amauropelta limbata* (Sw.) Pic.Serm., St. Claude, Guadeloupe, 1994 (UC 1609991); *Fawcett* 725, *Amauropelta linkiana* (C.Presl) Pic.Serm., Alajuela, Costa Rica, 2017 (UC 2048988, VT); *Rothfels* 5081, *Amauropelta* aff. *linkiana* (C.Presl) Pic.Serm., Pasco, Peru, 2016 (HOXA, UC, F); *Kessler* 14739, *Amauropelta longicaulis* (Baker) Salino & T.E.Almeida, Antioquia, Colombia, 2015 (UC 2079595); *Lorea* 1913, *Amauropelta loreae* (A.R.Sm.) Salino & T.E.Almeida, Guerrero, Mexico, 1982 (UC 1727998); *Jiménez* 1901, *Amauropelta lumbricoides* (A.R.Sm. & M.Kessler) Salino & T.E.Almeida, La Paz, Bolivia, 2003 (LPB, MO, UC 1719767); *Axelrod* 12247, *Amauropelta malangae* (C.Ch.) Salino & T.E.Almeida, Luquillo, Puerto Rico, 2002 (UC 1794602); *Paulay* 278, *Amauropelta margaretae* (E.Brown) Holttum, Ororangi, Rapa, 1980 (UC 2016197); *Krömer* 3813, *Amauropelta melanochlaena* (C.Ch.) Salino & T.E.Almeida, Veracruz, Mexico, 2009 (UC 2043510); *Jiménez* 1631, *Amauropelta nephelium* (A.R.Sm. & M.Kessler) Salino & T.E.Almeida, Cochabamba, Bolivia, 2002 (GOET, LPB, UC); *Fawcett* 835, *Amauropelta nevadensis* (Baker) S.E.Fawc. & A.R.Sm., California, U.S.A., 2017 (VT); *Fawcett* 567, *Amauropelta noveboracensis* (L.) S.E.Fawc. & A.R.Sm., Michigan, U.S.A., 2016 (UC 2049131, VT); *Jiménez* 2403, *Amauropelta nubicola* (de la Sota) Salino & T.E.Almeida, Tarija, Bolivia, 2004 (UC 1790497); *Nitta* 759, *Amauropelta oaxacana* (A.R.Sm.) Salino & T.E.Almeida, Alajuela, Costa Rica, 2011 (UC, CR); *Mickel* 6730, *Amauropelta oaxacana* (A.R.Sm.) Salino & T.E.Almeida, Oaxaca, Mexico, 1972 (UC 1468999); *Rothfels* 4818, *Amauropelta oligocarpa* (Humb. & Bonpl. ex Willd.) Pic.Serm., Junín, Peru, 2016 (HOXA, UC, F); *Rothfels* 4985, *Amauropelta opposita* (Vahl) Pic.Serm., Pasco, Peru, 2016 (HOXA, UC, F); *Kluge* 7746, *Amauropelta oppositifomis* (C.Ch.) Holttum, Mt. Karthala, Grand Comores, 2008 (UC 1924762); *Fawcett* 465, *Amauropelta piedrensis* (C.Ch.) Salino & T.E.Almeida, Adjuntas, Puerto Rico, 2016 (VT); *Jiménez* 1328, *Amauropelta pilosula* (Klotzsch & H.Karst. ex Mett.) Á.Löve & D.Löve, Cochabamba, Bolivia, 2002 (GOET, LPB, UC 1780760); *Barbosa* 203, *Amauropelta ptarmica* (Kunze ex Mett.) Pic.Serm., Parana, Brazil, 1998 (UC 1732296); *Testo* 1178, *Amauropelta pteroides* (Klotzsch) A.R.Sm., Antioquia, Colombia, 2016 (VT); *Sundue* 16, *Amauropelta pteroides* (Klotzsch) A.R.Sm., Colombia, Colombia, 2016 (VT); *Rothfels* 5108, *Amauropelta pusilla* (Mett.) A.R.Sm., Pasco, Peru, 2016 (HOXA, UC); *Mickel* 9094, *Amauropelta reducta* (C.Ch.) Salino & T.E.Almeida, San Cristobal-Peravia, Dominican Republic, 1983 (UC 1529155); *Chambers* J12, *Amauropelta resinifera* (Desv.) Pic.Serm., St. Thomas, Jamaica, 1976 (VT); *Escobar* 8880, *Amauropelta rheophyta* (Proctor) Salino & T.E.Almeida, Rio Grande, Puerto Rico, 1991 (UC1970917); *Rothfels* 4826, *Amauropelta rudis* (Kunze) Pic.Serm., Junín, Peru, 2016 (HOXA, UC, F); *Testo* 708, *Amauropelta rudis* (Kunze) Pic.Serm., San José, Costa Rica, 2015 (VT); *Mickel* 8181, *Amauropelta rupicola* (C.Ch.) Salino & T.E.Almeida, Pedernales, Dominican Republic, 1982 (UC 1529109); *Fawcett* 390, *Amauropelta sancta* (L.) Pic.Serm., Arcibon, Puerto Rico, 2016 (VT); *Sundue* 4012, *Amauropelta scalaris* (Christ) Á.Löve & D.Löve, Oaxaca, Mexico, 2015 (VT); *Kuo* 1588, *Amauropelta* aff. *serrulata* (Ching) S.E.Fawc. & A.R.Sm., Zhejiang, China, 2010 (UC); *Farrera* 1400, *Amauropelta struthiopteroides* (C.Ch.) Salino & T.E.Almeida, Chiapas, Mexico, 1996 (UC 1874227); *Kluge* 5448, *Amauropelta subscandens* (A.R.Sm.) Salino & T.E.Almeida, Sarapiquí, Costa Rica, 2003 (UC 1784820); *Jiménez* 1516, *Amauropelta tamandarei* (Rosenst.) Salino & T.E.Almeida, Cochabamba, Bolivia, 2002 (GOET, LPB, UC 1780393); *Mickel* 8918, *Amauropelta thomsonii* (Jenman) Pic.Serm., Pedernales, Dominican Republic, 1983 (UC 1529118); *Maas* 8006, *Amauropelta villana* (L.D.Gómez) Salino & T.E.Almeida, San José, Costa Rica, 1991 (UC 1612368); *Smith* 1665, *Amauropelta zurquiana* (A.R.Sm. & Lellinger) Salino & T.E.Almeida, San José, Costa Rica, 1986 (UC 1524433).
- Amblovenatum J.P.Roux**—*Elmer* 1080, *Amblovenatum immersum* (Blume) Mazumdar, Mindanao, Philippines, 1909 (VT 197264); *Fawcett* 732, *Amblovenatum opulentum* (Kaulf.) J.P.Roux, Puntarenas, Costa Rica, 2017 (UC 2049035, VT); *Chen Wade4152*, *Amblovenatum opulentum* (Kaulf.) J.P.Roux, Khánh Hòa, Vietnam, 2014 (TAIF).
- Ampelopteris Kunze**—*Chang* 20110103-002, *Ampelopteris prolifera* (Retz.) Copel., Yilan, Taiwan, 2011 (TAIF).
- Chingia Holttum**—*Chen Wade3989*, *Chingia acutidens* Holttum, vel aff., Negros, Philippines, 2014 (TAIF 455808, 455809); *Cicuzza* 58, *Chingia atropinosa* (C.Ch.) Holttum, Sulawesi, Bariri, Indonesia, 2008 (UC, Z); *Chen Wade4658*, *Chingia clavipilosa* Ching, Sabah, Borneo, 2016 (UC); *Chen Wade1920*, *Chingia ferox* (Blume) Holttum, Gede-Pangrango, Java, Indonesia, 2011 (TAIF 388273, 388274, 388275, 388276); *Fawcett* 611, *Chingia fijiensis* Game, S.E.Fawc. & A.R.Sm., Viti Levu, Fiji, 2016 (VT, UC 2049805); *Chen Wade2725*, *Chingia longissima* (Brack.) Holttum, Kolombangara, Solomon Islands, 2013 (TAIF 444977, 444978, 444979); *Nitta* 1756a, *Chingia longissima* (Brack.) Holttum, Moorea, Society Islands, 2012 (GH, UC); *SITW* 11121, *Chingia malodora* (Copel.) Holttum, Guadalcanal, Solomon Islands, 2016 (TAIF); *Karger* 2742, *Chingia marattioides* (Alston) S.E.Fawc. & A.R.Sm., West Papua, Indonesia, 2011 (UC 2048181, 2048180, Z); *Schuettpelz* 815, *Chingia sakayensis* (Zeiller) Holttum, Malaysia, (DUKE, KEP); *Kluge* 7141, *Chingia* aff. *sambasensis* Holttum, Sulawesi, Bariri, Sulawesi, 2007 (BO, UC 1930545); *Kluge* 7612, *Chingia* aff. *sambasensis* Holttum, Nikilalaki, Sulawesi, 2007 (UC 1930545); *SITW* 11087, *Chingia* sp., Santa Cruz, Solomon Islands, 2016 (UC 2048647).
- Christella H.Lév.**—*Lorence* 9627, *Christella* × *palmeri* (W.H.Wagner) ined., Hawaii, Kauai, U.S.A., 2007 (UC 1972589); *Nitta* 336, *Christella acuminata* (Houtt.) H.Lév., Iriomote-jima, Japan, 2008 (TNS, UC); *SITW* 11156, *Christella calcarea* D.Glenny, ined., Guadalcanal, Solomon Islands, 2016 (UC 2048637); *Kuo* 1856, *Christella calvescens* (Ching) Holttum, Tam Dao, Vietnam, 2010 (TAIF); *Kayombo* 2589, *Christella chaseana*

(Schelpe) Holttum, Iringa, Tanzania, 1999 (UC 1877795); *Calzadilla* 363, *Christella conspersa* (Schrad.) Á.Löve & D.Löve, Bolivia, 2008 (UC); *Fawcett* 662, *Christella dentata* (Forssk.) Brownsey & Jermy, Taveuni, Fiji, 2016 (UC, VT); *Kluge* 7775, *Pronephrium fidelei* Rakotondr., Singani, Grand Comores, 2008 (Comores, GOET, UC 1924704); *Chang* 20090523-002, *Christella ensifer* (Tagawa) Holttum ex C.M.Kuo, Pingtung, Taiwan, 2009 (TAIF); *Kuo* 766, *Christella evoluta* (C.B.Clarke & Baker) Holttum, Hunan, China, 2009 (TAIF); *Raulerson* 11209, *Christella gretheri* (W.H.Wagner) Holttum, Guam, U.S.A., 1985 (UC 2016162); *Tucker s.n.*, *Christella guamensis* Holttum, Guam, U.S.A., 1992 (UC 1734692); *Schelpe* 3143, *Christella gueintziana* (Mett.) Holttum, Natal, South Africa, 1952 (UC1085411); *Fawcett* 661, *Christella harveyi* (Mett.) Holttum, Taveuni, Fiji, 2016 (UC 2049804, VT); *Pichi Sermolli* 7223, *Christella hispidula* (Decne.) Hottum, Kaffa, Ethiopia, 1967 (UC 1429533); *Lott* 2989, *Christella hispidula* (Decne.) Hottum, Colima, Mexico, 1990 (UC 1583194); *Jiménez* 2430, *Christella hispidula* (Decne.) Hottum, Tarija, Bolivia, 2004 (UC 1790608); *Mousset* 163, *Christella hispidula* (Decne.) Hottum, Java, Indonesia, 1910 (UC 392029); *Mickel* 8573, *Christella hispidula* (Decne.) Holttum var. *inconstans* (C.Chr.) C.Sánchez, Santiago Rodriguez, Dominican Republic, 1982 (UC 1529135); *Mexia* 4613a, *Christella hispidula* (Decne.) Holttum var. *repens* (A.R.Sm.) comb. ined., Minas Gerais, Brazil, 1930 (UC 419595); *Thomas* 35842, *Christella hispidula* (Decne.) Holttum var. *versicolor* (R.St.John) A.R.Sm., Louisiana, U.S.A., 1973 (UC 1428387); *Chang* 20130726-012, *Christella* cf. *intermedia* (W.C.Shieh & J.L.Tsai) D.D.Palmer, Kaohsiung, Taiwan, 2013 (TAIF); *Kuo* 762, *Christella jaculosa* (Christ) Holttum, Hunan, China, 2009 (TAIF); *Chen Wade*3964, *Christella jaculosa* (Christ) Holttum, Negros, Philippines, 2014 (TAIF 454818, 454819, 454820, 454821); *Kuo* 636, *Christella latipinna* (Benth.) H.Lév., Kalinga, Philippines, 2009 (UC); *Fay* 1182, *Christella microbasis* (Baker) Holttum, Sierra Leone, 1985 (NY); *Kuo* 3367, *Christella papilio* (Hope) Holttum, Nantou, Taiwan, 2012 (TAIF); *Fawcett* 266, *Christella parasitica* (L.) H.Lév., Hawaii, Kauai, U.S.A., 2015 (UC, VT); *Chen Wade*2402, *Christella siamensis* (Tagawa & K.Iwats.) Holttum, Guangxi, China, 2013 (TAIF 441591); *Chen Wade*1369, *Christella subpubescens* (Blume) Holttum, Bù Gia Mp, Vietnam, 2010 (TAIF 411043); *Cicuzza* 876, *Christella subpubescens* (Blume) Holttum, Noki, Sulawesi, 2008 (UC, Z); *Zheng-yu* 15533, *Christella* sp., Sichuan, China, 1996 (UC 1727981); *Kuo* 650, *Christella* sp., Kalinga, Philippines, 2009 (TAIF).

Coryphopteris Holttum—*Kuo* 2363, *Coryphopteris angulariloba* (Ching) L.J.He & X.C.Zhang, Taipei, Taiwan, 2011 (TAIF); *Kessler* 13932, *Coryphopteris badia* (Alderw.) Holttum, West Papua, Indonesia, 2008 (UC 2048617); *Chang* 20090701-029, *Coryphopteris castanea* (Tagawa) Y.H.Chang, Taichung, Taiwan, 2009 (TAIF); *Kluge* 9175, *Coryphopteris diaphana* (Brause) Holttum, West Papua, Indonesia, 2008 (UC 2048596); *Kessler* 13860, *Coryphopteris* aff. *dura* (Copel.) Holttum, West Papua, Indonesia, 2008 (UC 2048606); *Karger* 2643, *Coryphopteris fasciculata* (E.Fourn.) Holttum, West Papua, Indonesia, 2011 (UC 2048200, Z); *Rothfels* 4705, *Coryphopteris gymnopoda* (Baker) Holttum, Kinabalu, Borneo, 2016 (UC 2048748); *Chen Wade*4803, *Coryphopteris gymnopoda* (Baker) Holttum var. *gymnopoda*, vel aff., Pahang, Peninsular Malaysia, 2017 (KLU, TAIF, UC); *Karger* 2547, *Coryphopteris habbemensis* (Copel.) Holttum, West Papua, Indonesia, 2011 (UC 2048205, Z); *Chen Wade*2629, *Coryphopteris hirsutipes* (C.B.Clarke) Holttum, Lam Dong, Vietnam, 2013 (TAIF); *Kuo* 999, *Coryphopteris japonica* (Baker) L.J.He & X.C.Zhang, Ibaraki, Japan, 2010 (UC); *Chen Wade*2370, *Coryphopteris japonica* (Baker) L.J.He & X.C.Zhang, Guangxi, China, 2013 (TAIF); *Chen Wade*3367, *Coryphopteris kolombangarae* Holttum, Kolombangara, Solomon Islands, 2013 (TAIF 464813, 464814); *Chen Wade*4274, *Coryphopteris ledermannii* (Hieron.) Holttum, Sabah, Malaysia, 2015 (TAIF 468094); *Kuo* 792, *Coryphopteris nigrescens* (Ching ex K.H.Shing) S.E.Fawc. & A.R.Sm., Hunan, China, 2009 (UC); *Chen Wade*2332, *Coryphopteris nigrescens* (Ching ex K.H.Shing) S.E.Fawc. & A.R.Sm., Guangxi, China, 2013 (TAIF); *Kessler* 13803, *Coryphopteris obtusata* (Alderw.) Holttum, West Papua, Wamena, Indonesia, 2008 (UC 2048605); *Kessler* 14074, *Coryphopteris* cf. *obtusata* (Alderw.) Holttum, West Papua, Indonesia, 2008 (UC); *Chen Wade*4819, *Coryphopteris pectiniformis* (C.Chr.) Holttum, Pahang, Peninsular Malaysia, 2017 (TAIF, KLU, UC); *Kessler* 13620, *Coryphopteris pectiniformis* (C.Chr.) Holttum, Sulawesi, Indonesia, 2008 (GOET, UC); *Kuo* 3422, *Coryphopteris pubirachis* (Baker) Holttum var. *philippinensis* Holttum, Bukidnon, Philippines, 2012 (UC); *Wood* 10448, *Coryphopteris quaylei* (E.Brown) Holttum, Ua Pou, Marquesas Islands, (PTBG); *Game* 95/147, *Coryphopteris seemannii* Holttum, Viti Levu, Fiji, 1995 (UC 1750064); *Fawcett* 593, *Coryphopteris simulata* (Davenp.) S.E.Fawc., Ontario, Canada, 2016 (UC 2049134, VT); *Chen Wade*3348, *Coryphopteris subbipinnata* Holttum, Kolombangara,

Solomon Islands, 2013 (TAIF 463422, 463423); *Karger* 2651, *Coryphopteris subnigra* (Brause) Holttum, West Papua, Indonesia, 2011 (UC 2048206, Z); *Chen Wade*4806, *Coryphopteris tahansenis* Holttum, Pahang, Peninsular Malaysia, 2017 (KLU, TAIF, UC); *Kessler* 13618, *Coryphopteris viscosa* (Baker) Holttum, Sulawesi, Indonesia, 2008 (GOET, UC); *Nitta* 2794, *Coryphopteris* sp., Moorea, Society Islands, 2013 (GH, UC); *Chang* 20120817-016, *Coryphopteris* sp., New Taipei, Taiwan, 2012 (TAIF); *Game s.n.* 3, *Coryphopteris* sp., Viti Levu, Fiji, 1995 (UC); *Chen Wade*4829, *Coryphopteris* sp., Pahang, Peninsular Malaysia, 2017 (KLU, TAIF, UC); *Wood* 10475, *Coryphopteris* sp., Ua Huka, Marquesas Islands, (PTBG); *Lu* 10162, *Coryphopteris* sp., Taoyuan, Taiwan, 2005 (VT 197604); *Nitta* 3275, *Coryphopteris* sp., Tahiti, Society Islands, 2013 (GH, UC).

Cyclogramma Tagawa—*Kuo* 2399, *Cyclogramma auriculata* (J.Sm.) Ching, Chiayi, Taiwan, 2011 (TAIF); *Chang* 20090413-002, *Cyclogramma leveillei* (Christ) Ching, Hualien, Taiwan, 2009 (TAIF); *Kuo* 3268, *Cyclogramma neauriculata* (Ching) Tagawa, Yunnan, China, 2012 (TAIF); *Kuo* 2974, *Cyclogramma omeiensis* (Baker) Tagawa, Yunnan, China, 2012 (TAIF).

Cyclosorus Link—*Ezrom* 34, *Cyclosorus interruptus* (Willd.) H.Ito, Lindi, Tanzania, 2005 (UC); *Ruaburindore* 3306, *Cyclosorus striatus* (Schum.) Ching, Kashari, Uganda, 1991 (UC).

Glaphyopteridopsis Ching—*Kuo* 2192, *Glaphyopteridopsis emeiensis* Y.X.Lin, Sichuan, China, 2011 (TAIF); *Kuo* 4156, *Glaphyopteridopsis erubescens* (Hook.) Ching, Nantou, Taiwan, 2015 (TAIF); *Zhang* 20100618027, *Glaphyopteridopsis rufostaminea* (Christ) Ching, Chongqing, China, 2010 (VT).

Goniopteris C.Presl—*Fawcett* 457D, *Goniopteris abdita* (Proctor) Salino & T.E.Almeida, Arecibo, Puerto Rico, 2016 (VT); *Seidel* 2890, *Goniopteris abrupta* (Desv.) A.R.Sm., La Paz, Bolivia, 1990 (UC); *Salino* 16032, *Goniopteris alan-smithiana* (L.D.Gómez) Salino & T.E.Almeida, Bahia, Brazil, 2014 (UC); *Zanoni* 26365, *Goniopteris alata* (L.) Ching, Pedernales, Dominican Republic, 1983 (UC 1609882); *Fawcett* 1094, *Goniopteris alata* (L.) Ching, Pedernales, Dominican Republic, 2018 (VT); *Clase* 4757, *Goniopteris alata* (L.) Ching var. *irregularis* (C.Chr.) comb. ined., Barahona, Dominican Republic, 2007 (JBSD); *Judd* 4434, *Goniopteris* cf. *alata* (L.) Ching, Massif de la Selle, Haiti, 1984 (HUH); *Fernandes* 300, *Goniopteris amazonica* (Salino & R.S.Fern.) Salino & T.E.Almeida, Para, Brazil, 2008 (UC 2029563); *Fuentes* 4368, *Goniopteris ancyrothrix* (Rosenst.) Salino & T.E.Almeida, La Paz, Bolivia, 2002 (UC); *Barcelona* 1161, *Goniopteris pellita* (Willd.) A.R.Sm., St. Elizabeth, Jamaica, 1997 (NY); *Matos* 1558, *Goniopteris beckeriana* (F.B.Matos, A.R.Sm. & Labiak) Salino & T.E.Almeida, Bahia, Brazil, 2008 (UC 1927131); *Kessler* 13354, *Goniopteris bifornata* (Rosenst.) Salino & T.E.Almeida, Cochabamba, Bolivia, 2004 (GOET, LPB, UC 1785589); *Croat* 20491, *Goniopteris* aff. *bifornata* (Rosenst.) Salino & T.E.Almeida, Loreto, Peru, 1972 (UC 1502856); *Weigelt* 90409, *Goniopteris biolleyi* (Christ) Pic.Serm., La Paz, Bolivia, 2009 (GOET, LPB, UC 1970824); *Krömer* 2276, *Goniopteris blanda* (Fée) Salino & T.E.Almeida, Veracruz, Mexico, 2005 (UC); *Salino* 14680, *Goniopteris bradei* Salino, Espirito Santo, Brazil, 2009 (UC 2048950); *Procter* 39806, *Goniopteris brittoniae* (Sloss.) Ching, Maricao, Puerto Rico, 1983 (UC); *Chrysler* 6540, *Goniopteris brittoniae* (Sloss.) Ching, Maricao, Puerto Rico, 1947 (HUH); *Labiak* 3787, *Goniopteris burkartii* Abbiatti, Parana, Brazil, 2006 (UC); *Labiak* 3787, *Goniopteris burkartii* Abbiatti, Parana, Brazil, 2006 (UC 1872916); *Fawcett* 1078, *Goniopteris cordata* (Fée) Salino & T.E.Almeida, Pedernales, Dominican Republic, 2018 (VT); *Fawcett* 454, *Goniopteris cordata* (Fée) Salino & T.E.Almeida, Arecibo, Puerto Rico, 2016 (VT); *Fawcett* 1111, *Goniopteris* cf. *cordata* (Fée) Salino & T.E.Almeida, Pedernales, Dominican Republic, 2018 (VT); *Fawcett* 1132, *Goniopteris* cf. *cordata* (Fée) Salino & T.E.Almeida, Independencia, Dominican Republic, 2018 (VT); *Valdespino* 269, *Goniopteris cumingiana* (Kunze) de Jonch. & U.Sen, Panamá, Panamá, 1986 (UC 1529318); *Rothfels* 08-172, *Goniopteris curta* (Christ) A.R.Sm., Sarapiquí, Costa Rica, 2008 (CR, DUKE, INB, UC); *Testo* 749, *Goniopteris eggersii* (Hieron.) Alston, Puntarenas, Costa Rica, 2015 (VT); *Testo* 732, *Goniopteris eggersii* (Hieron.) Alston, Puntarenas, Costa Rica, 2015 (VT); *Testo* 1252, *Goniopteris equitans* (Christ) Salino & T.E.Almeida, Puntarenas, Costa Rica, 2017 (VT); *Liesner* 14815, *Goniopteris francoana* (E.Fourn.) Á.Löve & D.Löve, Alajuela, Costa Rica, 1983 (UC); *Croat* 68968, *Goniopteris fraseri* (Mett. ex Kuhn) A.R.Sm., Darién, Panamá, 1988 (UC 1553799); *Gonzales* 2117, *Goniopteris gemmulifera* (Hieron.) Vareschi, Cayenne, French Guiana, 2010 (UC 2047245); *Pietrobohm* 54366, *Goniopteris gonophora* (Weath.) Salino & T.E.Almeida, Pernambuco, Brazil, 2001

(UC); *Fawcett 401*, *Goniopteris hastata* Fée, Hatillo, Puerto Rico, 2016 (VT); *Sundue 4007*, *Goniopteris hatchii* (A.R.Sm.) Á.Löve & D.Löve, Oaxaca, Mexico, 2015 (VT); *Testo 877*, *Goniopteris hatchii* (A.R.Sm.) Á.Löve & D.Löve, Oaxaca, Mexico, 2015 (VT); *Mejia 1619*, *Goniopteris hildae* (Proctor) Salino & T.E.Almeida, Samaná, Dominican Republic, 1985 (JBSD); *Fawcett 369*, *Goniopteris hildae* (Proctor) Salino & T.E.Almeida, Arecibo, Puerto Rico, 2016 (VT); *Jansen-Jacobs 7034*, *Goniopteris holodictya* (K.U.Kramer) Salino & T.E.Almeida, Marowijne, Suriname, 2004 (UC 1869861); *Gonzales 17141*, *Goniopteris imbricata* (Liebm.) Á.Löve & D.Löve, Tabasco, Mexico, 1985 (UC); *Zanoni 42430*, *Goniopteris imitata* (C.Chr.) Salino & T.E.Almeida, Santiago, Dominican Republic, 1989 (UC); *Salino 1306*, *Goniopteris jamesonii* (Hook.) Salino & T.E.Almeida, São Paulo, Brazil, 1992 (UC); *Rothfels 4987*, *Goniopteris jamesonii* (Hook.) Salino & T.E.Almeida, Pasco, Peru, 2016 (HOXA, UC); *Weigelt 90605*, *Goniopteris juruensis* (C.Chr.) Brade, Beni, Bolivia, 2009 (GOET, LPB, UC 1970821); *Salino 3569*, *Goniopteris kuhlmanii* (Brade) Brade, Minas Gerais, Brazil, 1997 (UC); *Proctor 21906*, *Goniopteris leptocladia* Fée, Jamaica, Jamaica, 1961 (HUH); *Moran 3136*, *Goniopteris lewyi* (E.Fourn.) C.V.Morton, San José, Costa Rica, 1983 (UC 1265894); *Caroajal Hernandez 943*, *Goniopteris liebmannii* (Maxon & C.V.Morton) A.R.Sm. & Salino, Oaxaca, Mexico, 2014 (UC); *Prado 977*, *Goniopteris littoralis* (Salino) Salino & T.E.Almeida, São Paulo, Brazil, 1999 (UC 1730162); *Webster 23408*, *Goniopteris lugubriformis* (Rosenst.) Salino & T.E.Almeida, Loreto, Peru, 1978 (UC 158912); *Salino 10281*, *Goniopteris lugubris* (Mett.) Brade, São Paulo, Brazil, 2005 (UC); *Salino 10278*, *Goniopteris lugubris* (Mett.) Brade, São Paulo, Brazil, 2005 (UC); *Salino 7950*, *Goniopteris macropus* (Blume) Ching, Minas Gerais, Brazil, 2002 (UC); *Woytkowski 35241*, *Goniopteris macrotis* (Hook.) Pic.Serm., San Martín, Peru, 1947 (UC 1013950); *Pena Chocarro 2620*, *Goniopteris minor* (C.Chr.) Salino & T.E.Almeida, Ahuachapan, El Salvador, 2007 (UC); *Testo 923*, *Goniopteris mollis* Fée, Heredia, Costa Rica, 2015 (VT); *Matos 1559*, *Goniopteris aff. monosora* (C.Presl) Salino, Bahia, Brazil, 2008 (UC 1927130); *Fawcett 1093*, *Goniopteris domingensis* (Spreng.) Pic. Serm. (= *G. moranii* C.Sánchez), Dominican Republic, 2018 (VT); *Fawcett 372*, *Goniopteris domingensis* (Spreng.) Pic. Serm., Arecibo, Puerto Rico, 2016 (VT); *Salino 1800*, *Goniopteris multigemmifera* (Salino) Salino & T.E.Almeida, São Paulo, Brazil, 1993 (UC 1605693); *Proctor 19256*, *Goniopteris nephrodioides* (Klotzsch) Vareschi, St. Kitts, St. Kitts, 1959 (HUH); *Rivero 925*, *Goniopteris nephrodioides* (Klotzsch) Vareschi, Lara, Venezuela, 1985 (UC); *Testo 530*, *Goniopteris nicaraguensis* (E.Fourn.) Salino & T.E.Almeida, Heredia, Costa Rica, 2014 (VT); *Fawcett 722*, *Goniopteris nicaraguensis* (E.Fourn.) Salino & T.E.Almeida, Alajuela, Costa Rica, 2017 (UC 2049028, VT); *Sundue 3931*, *Goniopteris nicaraguensis* (E.Fourn.) Salino & T.E.Almeida × *G. poiteana* (Bory) Ching, Heredia, Costa Rica, 2013 (VT); *Hilaire 2405*, *Goniopteris nigricans* (Ekman & C.Chr.) Salino & T.E.Almeida, Massif de la Hotte, Haiti, 2006 (JBSD); *Sander 17618*, *Goniopteris oblitterata* (Sw.) C.Presl, Puntarenas, Costa Rica, 1995 (UC); *Testo 1047*, *Goniopteris cf. oblitterata* (Sw.) C.Presl, Rivas, Nicaragua, 2016 (VT); *Grayum 3633*, *Goniopteris oroniensis* (L.D. Gómez) Salino & T.E.Almeida, Limón, Costa Rica, 1984 (UC 1506549); *Salino 10140*, *Goniopteris paranaensis* (Salino) Salino & T.E.Almeida, São Paulo, Brazil, 2005 (UC); *Mostacero 735*, *Goniopteris paucijuga* (Klotzsch) A.R.Sm., Aragua, Venezuela, 2007 (UC 1964920); *Krömer 4079*, *Goniopteris paucipinnata* (Donn. Sm.) Salino & T.E.Almeida, Veracruz, Mexico, 2013 (UC); *van der Werff 13165*, *Goniopteris pinnatifida* (A.R.Sm.) Salino & T.E.Almeida, Zamora-Chinchipe, Ecuador, 1994 (UC 1611138); *Salino 2685*, *Goniopteris platypes* Fée, Minas Gerais, Brazil, 1996 (UC); *Fawcett 395*, *Goniopteris poiteana* (Bory) Ching, Hatillo, Puerto Rico, 2016 (VT); *Testo 1053*, *Goniopteris poiteana* (Bory) Ching, Rivas, Nicaragua, 2016 (UC 2049013, VT); *Croat 24548*, *Goniopteris praetermissa* (Maxon) Salino & T.E.Almeida, Stann Creek, Belize, 1973 (UC); *Fawcett 382*, *Goniopteris reptans* (J.F.Gmel.) C.Presl, Arecibo, Puerto Rico, 2016 (VT); *Fawcett 1073*, *Goniopteris reptans* (J.F.Gmel.) C.Presl, Barahona, Dominican Republic, 2018 (VT); *Krömer 4082*, *Goniopteris resiliens* (Maxon) Salino & T.E.Almeida, Veracruz, Mexico, 2013 (UC); *Fawcett 1118*, *Goniopteris retroflexa* (L.) Salino & T.E.Almeida, Pedernales, Dominican Republic, 2018 (VT); *Croat 97637*, *Goniopteris retroflexa* (L.) Salino & T.E.Almeida, La Vega, Dominican Republic, 2006 (MO, UC); *Fawcett 471*, *Goniopteris retroflexa* (L.) Salino & T.E.Almeida, Adjuntas, Puerto Rico, 2016 (VT); *Possley WPT347*, *Goniopteris retroflexa* (L.) Salino & T.E.Almeida, Yauco, Puerto Rico, 2016 (MAPR); *Acevedo-Rodriguez 13237*, *Goniopteris aff. retroflexa* (L.) Salino & T.E.Almeida, Baoruco, Dominican Republic, 2003 (VT); *Perez Farrera 2412*, *Goniopteris rhachiflexuosa* (Riba) Salino & T.E.Almeida, Chiapas, Mexico, 2000 (UC); *Salino 6910*, *Goniopteris riograndensis* (Lindm.) Pic.Serm., Minas Gerais, Brazil, 2001 (UC); *van der Werff 858*, *Goniopteris × rolandii* (C.Chr.) A.R.Sm., Falcón, Venezuela, 1979

(UC 1465700); *Salino 8572*, *Goniopteris scabra* (C.Presl) Brade, São Paulo, Brazil, 2003 (UC); *Caranza Gonzales 2575*, *Goniopteris schaffneri* (Fée) Salino & T.E.Almeida, Querétaro, Mexico, 1994 (UC); *Salino 1783*, *Goniopteris schwackeana* Brade, São Paulo, Brazil, 1993 (UC); *Possley 144*, *Goniopteris sclerophylla* (Poepp. ex Spreng.) Wherry, Florida, U.S.A., 2014 (UC); *Fawcett 1040*, *Goniopteris cf. sclerophylla* (Kunze) Wherry var. *latifolia* C.Sánchez, comb. ined., Barahona, Dominican Republic, 2018 (VT); *Mickel 8979*, *Goniopteris scolopendrioides* (Sw.) C.Presl, Barahona, Dominican Republic, 1983 (UC); *Pina s.n.*, *Goniopteris scolopendrioides* (Sw.) C.Presl, Barahona, Dominican Republic, 2018 (JBSD); *Salino 709*, *Goniopteris semirii* (Salino & Melo) Salino & T.E.Almeida, Minas Gerais, Brazil, 1989 (UC 1605684); *Christenhusz 3300*, *Goniopteris serrulata* (Sw.) J.Sm., St. Catherine, Jamaica, 2005 (UC); *Silva 221*, *Goniopteris stolziana* (A.R.Sm.) Salino & T.E.Almeida, Chiapas, Mexico, 2015 (Z); *van der Werff 3186*, *Goniopteris straminea* (Baker) Ching, Falcón, Venezuela, 1978 (UC 1465386); *Salino 9695*, *Goniopteris subdimorpha* Salino, Minas Gerais, Brazil, 2004 (UC 2048663); *Krömer 4053*, *Goniopteris tetragona* (Sw.) C.Presl, Veracruz, Mexico, 2013 (UC); *Proctor 18875*, *Goniopteris tetragona* (Sw.) C.Presl, Montserrat, Montserrat, 1959 (HUH); *Testo 791*, *Goniopteris tetragona* (Sw.) C.Presl, Heredia, Costa Rica, 2015 (VT); *Martinez S. 11754*, *Goniopteris toganetra* (A.R.Sm.) Á.Löve & D.Löve, Chiapas, Mexico, 1985 (UC); *Weigelt 90410*, *Goniopteris tristis* (Kunze) Brade, La Paz, Bolivia, 2009 (GOET, LPB); *Rothfels 4999*, *Goniopteris tryoniolum* (A.R.Sm.) Salino & T.E.Almeida, Pasco, Peru, 2016 (HOXA, UC); *Jimenez 2521*, *Goniopteris tryoniolum* (A.R.Sm.) Salino & T.E.Almeida, La Paz, Bolivia, 2004 (UC 1790499); *Krömer 3627*, *Goniopteris tuxtliensis* (L.Krömer, Acebey & A.R.Sm.) Salino & T.E.Almeida, Veracruz, Mexico, 2008 (UC); *Onesis Vasquez 267*, *Goniopteris urbanii* (Sodirol) comb. ined., Canal Zone, Panama, 1980 (UC); *Fawcett 427*, *Goniopteris verecunda* Proctor, Lares, Puerto Rico, 2016 (VT); *Almeida 1946*, *Goniopteris vivipara* (Raddi) Brack., Minas Gerais, Brazil, 2009 (UC); *Testo 1547*, *Goniopteris sp.*, Oaxaca, Mexico, 2018 (VT); *Fawcett 1070*, *Goniopteris baoruicensis* S.E.Fawc., Barahona, Dominican Republic, 2018 (VT); *Salino 2131*, *Goniopteris sp.*, Minas Gerais, Brazil, 1995 (UC 1605682); *Fawcett 1131*, *Goniopteris sp.*, Independencia, Dominican Republic, 2018 (VT); *Salino 16037*, *Goniopteris sp.*, Bahia, Brazil, 2014 (UC 2047348); *Rothfels 4991*, *Goniopteris sp.*, Pasco, Peru, 2016 (HOXA, UC).

***Grypothrix* (Holttum) S.E.Fawc. & A.R.Sm.**—*Chen Wade4104*, *Grypothrix crenulata* (Holttum) S.E.Fawc. & A.R.Sm., Lam Dong, Vietnam, 2014 (TAIF 458791, 458792); *Chen Wade4074*, *Grypothrix cuspidata* (Blume) S.E.Fawc. & A.R.Sm., Isabel, Solomon Islands, 2014 (TAIF 451883); *Kuo 931*, *Grypothrix longipetiolata* (K.Iwats.) S.E.Fawc. & A.R.Sm., Pingtung, Taiwan, 2010 (TAIF); *Kuo 958*, *Grypothrix megacusps* (Baker) S.E.Fawc. & A.R.Sm., Pingtung, Taiwan, 2010 (TAIF); *Chen Wade1449*, *Grypothrix megacusps* (Baker) S.E.Fawc. & A.R.Sm., Lam Dong, Vietnam, 2010 (TAIF 397403); *Kuo 932*, *Grypothrix parishii* (Bedd.) S.E.Fawc. & A.R.Sm., Pingtung, Taiwan, 2010 (TAIF); *Kuo 1720*, *Grypothrix parishii* (Bedd.) S.E.Fawc. & A.R.Sm., vel aff., Hainan, China, 2010 (TAIF); *Kessler 13727*, *Grypothrix ramosii* (C.Chr.) S.E.Fawc. & A.R.Sm., West Papua, Indonesia, 2008 (UC 2048621); *Chen Wade3972*, *Grypothrix ramosii* (C.Chr.) S.E.Fawc. & A.R.Sm., Negros, Philippines, 2014 (TAIF 454810, 454811); *Chen Wade4847*, *Grypothrix rubicunda* (Alderw.) S.E.Fawc. & A.R.Sm., Pahang, Peninsular Malaysia, 2017 (KLU, TAIF, UC); *Chen Wade2193*, *Grypothrix salicifolia* (Wall. ex Hook.) S.E.Fawc. & A.R.Sm., cultivated, Malaysia, 2012 (TAIF 430576, 430577, 430578, 430579); *Kuo 907*, *Grypothrix simplex* (Hook.) S.E.Fawc. & A.R.Sm., Pingtung, Taiwan, 2010 (TAIF); *Karger 916*, *Grypothrix sulawesensis* (K.Iwats.) S.E.Fawc. & A.R.Sm., Lore Lindu, Sulawesi, 2010 (UC 2048338; UC 2048377); *Sundue 2243*, *Grypothrix triphylla* (Sw.) S.E.Fawc. & A.R.Sm., Bukit Timah, Singapore, 2010 (VT 197731).

***Hoiokula* S.E.Fawc. & A.R.Sm.**—*Hobdy 2664*, *Hoiokula pendens* (D.D.Palmer) S.E.Fawc. & A.R.Sm., Maui, Hawaiian Islands, 1986 (UC 1547482); *Wood 11291*, *Hoiokula cf. pendens* (D.D.Palmer) S.E.Fawc. & A.R.Sm., Maui, Hawaiian Islands, 2005 (UC 2013587); *Grether 3404*, *Hoiokula sandwicensis* (Brack.) S.E.Fawc. & A.R.Sm., Hawaii, Oahu, U.S.A., 1945 (UC 96990).

***Leptogramma* J.Sm.**—*Kuo 2126*, *Leptogramma cyrtomioides* (C.Chr.) Y.H.Chang & L.Y.Kuo, Sichuan, China, 2011 (TAIF); *Liu 9476*, *Leptogramma himalaica* Ching, Yunnan, China, 2008 (TAIF); *Chang 20140714043*, *Leptogramma intermedia* Ching ex Y.H.Chang & L.Y.Kuo, Guizhou, China, 2014 (TAIF); *Liu 9463B*, *Leptogramma latipinna* (Ching ex Y.X.Lin) Y.H.Chang & L.Y.Kuo, Yunnan, China, 2008 (TAIF); *Kuo 1426*, *Leptogramma aff. leptogrammoides* (K.Iwats.) Y.H.Chang &

L.Y.Kuo, Yunnan, China, 2010 (TAIF); *Chang* 20100917-029, *Leptogramma mollissima* (Fisch. ex Kunze) Ching, Taitung, Taiwan, 2010 (TAIF); *Kuo* 1086, *Leptogramma mollissima* (Fisch. ex Kunze) Ching, Kagoshima, Japan, 2010 (TAIF); *Kuo* 1009, *Leptogramma mollissima* (Fisch. ex Kunze) Ching, Tateyama type, Tsukuba, Japan, 2010 (TAIF); *Pringle s.n.*, *Leptogramma pilosa* (M.Martens & Galeotti) Underw. var. *major* (Crawford) comb. ined., Puebla, Mexico, 1908 (VT); *Pringle* 2589, *Leptogramma pilosa* (M.Martens & Galeotti) Underw. var. *pilosa*, Jalisco, Mexico, 1889 (VT); *Quintanilla* 1095, *Leptogramma pozoi* (Lag.) Heywood, A Coruna, Spain, 2016 (TAIF); *Chang* 20140712024, *Leptogramma scallanii* (Christ) Ching, Guizhou, China, 2014 (TAIF); *Schuettpelz* 1135, *Leptogramma tottooides* Hayata ex H.Ito, Taiwan, 2007 (DUKE, TAIF); *Kuo* 3818, *Leptogramma tottooides* Hayata ex H.Ito, Nantou, Taiwan, 2013 (TAIF); *Kuo* 2238, *Leptogramma* sp., Sichuan, China, 2011 (TAIF).

Macrothelypteris (H.Ito) Ching—*Tagawa* 7912, *Macrothelypteris contingens* Ching, Honshu, Japan, 1957 (UC 1180602); *Bartholomew* 1436, *Macrothelypteris oligophlebia* (Baker) Ching var. *elegantissima* (Hayata) Ching, Hubei, China, 1980 (UC 1492073); *Nitta* 307, *Macrothelypteris polypodioides* (Hook.) Holttum, Moorea, Society Islands, 2008 (P, PAP, TNS, UC); *Fawcett* 696, *Macrothelypteris torresiana* (Gaudich.) Ching, Taveuni, Fiji, 2016 (UC 2049797, VT); *Testo* 730, *Macrothelypteris torresiana* (Gaudich.) Ching, Puntarenas, Costa Rica, 2015 (VT).

Menisciopsis (Holttum) S.E.Fawc. & A.R.Sm.—*Wood* 15623, *Menisciopsis boydiae* (D.C.Eaton) S.E.Fawc. & A.R.Sm., Hawaii, Maui, U.S.A., 2013 (PTBG); *Wood* 16205, *Menisciopsis cyatheoides* (Kaulf.) S.E.Fawc. & A.R.Sm., Hawaii, Kauai, U.S.A., 2015 (PTBG); *Fawcett* 277, *Menisciopsis cyatheoides* (Kaulf.) S.E.Fawc. & A.R.Sm., Hawaii, Kauai, U.S.A., 2015 (UC, PTBG, VT); *Chen* Wade2564, *Menisciopsis lakhimpurensis* (Rosenst.) S.E.Fawc. & A.R.Sm., Lam Dong, Vietnam, 2013 (TAIF 439708, 439709, 439710); *Chen* Wade2533, *Menisciopsis penangiana* (Hook.) S.E.Fawc. & A.R.Sm., Guangxi, China, 2013 (TAIF 440168, 440169); *Karger* 386, *Menisciopsis rubida* (J.Sm. ex Hook.) S.E.Fawc. & A.R.Sm., Sibuyon, Philippines, 2009 (Z); *Fawcett* 716, *Menisciopsis rubrinervis* (Mett.) S.E.Fawc. & A.R.Sm., Taveuni, Fiji, 2016 (UC 2049790, VT); *Wood* 16708, *Menisciopsis waialele* (Flynn) S.E.Fawc. & A.R.Sm., Hawaii, Kauai, U.S.A., 2016 (PTBG, UC).

Meniscium Schreber—*Smith* 2835, *Meniscium andreaum* Sodiro, Pichincha, Ecuador, 2001 (UC 1763551); *Churchill* 3028, *Meniscium angustifolium* Willd., Toro Negro, Puerto Rico, 1978 (VT 197522); *Jiménez* 1967, *Meniscium arborescens* Humb. & Bonpl. ex Willd., Pando, Bolivia, 2003 (UC 1785614, 1785615); *Tuomisto* 11935, *Meniscium arcuatum* (Maxon & C.V.Morton) Pic.Serm., Napo, Ecuador, 1998 (UC 1788069); *Weigelt* 90436, *Meniscium chrysodioides* Fée, La Paz, Bolivia, 2009 (GOET, LPB, UC 1970780; UC 1970781); *Rothfels* 5013, *Meniscium consobrinum* (Maxon & C.V.Morton) Pic.Serm., Pasco, Peru, 2016 (HOXA, UC); *Fernandes* 779, *Meniscium delicatum* R.S. Fern. & Salino, Piaui, Brazil, 2012 (UC 2015504); *Fernandes* 970, *Meniscium delicatum* R.S. Fern. & Salino, Piaui, Brazil, 2012 (UC 2048953); *Testo* 782, *Meniscium falcatum* Liebm., Heredia, Costa Rica, 2017 (VT); *Jiménez* 1047, *Meniscium falcatum* Liebm., La Paz, Bolivia, 2001 (LPB); *Testo* 1233, *Meniscium giganteum* Mett., Heredia, Costa Rica, 2017 (VT); *Foster* 85-101, *Meniscium giganteum* Mett., Pichincha, Ecuador, 1985 (UC 1505353); *Ortega* 3137, *Meniscium hostmannii* (Klotzsch) R.S.Fern. & Salino, Mérida, Venezuela, 1988 (UC 1541929); *Sundue* 890, *Meniscium lanceum* (A.R.Sm.) R.S.Fern. & Salino, Santa Cruz, Bolivia, 2003 (VT 197535); *Rothfels* 08-180, *Meniscium lingulatum* (C.Chr.) Pic.Serm., Heredia, Costa Rica, 2008 (CR, DUKE, INB, MO, UC 2030226); *Conant* 895, *Meniscium longifolium* Desv., Amazonas, Brazil, 1975 (VT 197530); *Matos* 1561, *Meniscium macrophyllum* Kunze, Bahia, Brazil, 2008 (UC 1927134); *Arruda* 963, *Meniscium maxonianum* (A.R.Sm.) R.S. Fern. & Salino, Para, Brazil, 2012 (UC 2015502); *Acebey* 769, *Meniscium membranaceum* (Mett.) Pic.Serm., Cochabamba, Bolivia, 1997 (UC 1736854); *Windisch* 4774, *Meniscium nesioticum* (Maxon & C.V.Morton) Jermy & T.G.Walker, Mato Grosso, Brazil, 1986 (UC 1540486); *Wood* 16435, *Meniscium pachysorum* (Hieron.) R.S. Fern. & Salino, La Paz, Bolivia, 2000 (UC 1789057); *Fawcett* 480, *Meniscium reticulatum* (L.) Sw., Rio Grande, Puerto Rico, 2016 (VT 197547); *Testo* 528, *Meniscium serratum* Cav., Heredia, Costa Rica, 2014 (VT); *Testo* 1455, *Meniscium* sp., Chocó, Colombia, 2017 (VT).

Menisorus Alston—*Leeuwenberg* 6707, *Menisorus pauciflorus* (Hook.) Alston, Lomie', Cameroon, 1965 (UC 1385267); *Reitsma* 1069, *Menisorus pauciflorus* (Hook.) Alston, Doussala, Gabon, 1985 (NY); *Lovett* 353,

Menisorus unicus (Kunze) S.E.Fawc. & A.R.Sm., Iringa, Tanzania, 1991 (UC 2027666).

Mesophlebion Holttum—*Karger* 1044, *Mesophlebion chlamydothorum* (C.Chr.) Holttum, Buru, Maluku, 2010 (UC 2048281, Z); *Chen* Wade3817, *Mesophlebion crassifolium* (Blume) Holttum, Negros, Philippines, 2014 (TAIF 454524, 454535); *Cicuzza* 456, *Mesophlebion crassifolium* (Blume) Holttum, Sulawesi, Pono, Indonesia, 2007 (UC, Z); *Chen* Wade4227, *Mesophlebion echinatum* (Mett.) Holttum, Sabah, Malaysia, 2015 (TAIF 468069, 468070); *Chen* Wade4242, *Mesophlebion motleyanum* (Hook.) Holttum, Sabah, Malaysia, 2015 (TAIF 468057, 468058); *Cicuzza* 532, *Mesophlebion persquamiferum* (Alderw.) Holttum, Sulawesi, Pono, Indonesia, 2008 (UC 2048261); *Kessler* 13721, *Mesophlebion rufescens* Holttum, Oransbari, West Papua, 2008 (UC 2048600); *Chen* Wade2197, *Mesophlebion trichopodium* (C.Chr.) Holttum, Cultivated, Malaysia, 2012 (TAIF 430525, 430584, 430585, 430586); *Kluge* 7057, *Mesophlebion trichopodium* (C.Chr.) Holttum, vel aff., Sulawesi, Bariri, Indonesia, 2007 (BO, UC).

Mesopteris Ching—*Chen* Wade4186, *Mesopteris* cf. *paraphysophora* (Alderw.) S.E.Fawc. & A.R.Sm., Sabah, Malaysia, 2015 (TAIF 467321, 467322); *Chen* Wade3208, *Mesopteris pseudostenobasis* (Copel.) S.E.Fawc. & A.R.Sm., Vangunu, Solomon Islands, 2013 (TAIF 451637). *Wang s.n.*, *Mesopteris tonkinensis* (C.Chr.) Ching, Guangxi, China, 2011 (IBG).

Metathelypteris (H.Ito) Ching—*Chang* 20090724-013, *Metathelypteris ascendens* (Ching) Ching, Taipei, Taiwan, 2009 (TAIF); *Kessler* 13545, *Metathelypteris dayi* (Bedd.) Holttum, Peninsular Malaysia, Malaysia, 2008 (GOET, UC 1951588); *Chen* Wade4138, *Metathelypteris flaccida* (Blume) Ching, Lam Dong, Vietnam, 2014 (TAIF); *Chen* Wade1926, *Metathelypteris flaccida* (Blume) Ching, Gede-Pangrango, Java, Indonesia, 2011 (TAIF 388290); *Karger* 863, *Metathelypteris gracilescens* (Blume) Ching, Mindanao, Philippines, 2010 (Z); *Kuo* 3420, *Metathelypteris gracilescens* (Blume) Ching, Bukidnon, Philippines, 2012 (UC); *Chang* 20091106-036, *Metathelypteris* cf. *gracilescens* (Blume) Ching, Tam Dao, Vietnam, 2009 (TAIF); *Chen* Wade2365, *Metathelypteris laxa* (Franch. & Sav.) Ching, Guangxi, China, 2013 (TAIF); *Kuo* 2347, *Metathelypteris uraiensis* (Rosenst.) Ching, Taipei, Taiwan, 2011 (TAIF).

Oreopteris Holub—*Wardlaw s.n.*, *Oreopteris limbosperma* (All.) Holub, Arran, Scotland, 2001 (UC 1763849); *Barrington* 2408, *Oreopteris quelpariensis* (Christ) Holub, Alaska, U.S.A., 2011 (VT 197585).

Pakau S.E.Fawc. & A.R.Sm.—*Walker* 4393, *Pakau pennigera* (G.Forst.) S.E.Fawc. & A.R.Sm., Auckland, New Zealand, 1949 (UC 916383).

Pelazoneuron (Holttum) A.R.Sm. & S.E.Fawc.—*Fawcett* 368, *Pelazoneuron abruptum* (C.Presl) A.R.Sm. & S.E.Fawc., Arecibo, Puerto Rico, 2016 (VT); *Yatskievych* 85-208, *Pelazoneuron albicaule* (Fée) A.R.Sm. & S.E.Fawc., Oaxaca, Mexico, 1985 (UC); *Mickel* 5078b, *Pelazoneuron albicaule* (Fée) A.R.Sm. & S.E.Fawc. × *puberulum* (Baker) C.V.Morton, Oaxaca, Mexico, 1970 (UC 1507582); *Montreal Botanic Garden* 1593-1954, *Pelazoneuron augescens* (Link) A.R.Sm. & S.E.Fawc., cultivated, Canada, 2017 (UC, VT); *Barbosa* 1593, *Pelazoneuron berroi* (C.Chr.) A.R.Sm. & S.E.Fawc., Mato Grosso do Sul, Brazil, 2006 (UC); *Wood* 15027, *Pelazoneuron clivale* (A.R.Sm.) A.R.Sm. & S.E.Fawc., La Paz, Bolivia, 1999 (UC 1788776); *Rothfels* 5019, *Pelazoneuron depilatum* (A.R.Sm.) A.R.Sm. & S.E.Fawc., Pasco, Peru, 2016 (HOXA, UC); *Carvajal Hernandez* 700, *Pelazoneuron kunthii* (Desv.) A.R.Sm. & S.E.Fawc., Veracruz, Mexico, 2013 (UC); *Gonzales* 17140, *Pelazoneuron ovatum* (R.P.St.John) A.R.Sm. & S.E.Fawc. var. *lindheimeri* (C.Chr.) A.R.Sm., Tabasco, Mexico, 1985 (UC); *Torres* 17250, *Pelazoneuron ovatum* (R.P.St.John) A.R.Sm. & S.E.Fawc. var. *lindheimeri* (C.Chr.) A.R.Sm., Oaxaca, Mexico, 2012 (VT); *Fawcett* 744, *Pelazoneuron patens* (Sw.) A.R.Sm. & S.E.Fawc., Puntarenas, Costa Rica, 2017 (UC 2049033, VT); *Mexia* 4478, *Pelazoneuron patens* (Sw.) A.R.Sm. & S.E.Fawc. var. *dissimilis* (Schrud.) comb. ined., Minas Gerais, Brazil, 1930 (UC 419565); *Charlton* 1338, *Pelazoneuron puberulum* (Baker) A.R.Sm. & S.E.Fawc. var. *sonorensis* (A.R.Sm.) A.R.Sm. & S.E.Fawc., Baja Norte, Mexico, 1988 (UC); *Fawcett* 752, *Pelazoneuron puberulum* (Baker) A.R.Sm. & S.E.Fawc. var. *sonorensis* (A.R.Sm.) A.R.Sm. & S.E.Fawc., California, U.S.A., 2017 (JEPS, SBBG, VT); *Calzadilla* 379, *Pelazoneuron schizotis* (Hook.) A.R.Sm. & S.E. Fawc., Santa Cruz, Bolivia, 2008 (UC); *Fawcett* 1034, *Pelazoneuron serra* (Sw.) A.R.Sm. & S.E.Fawc., Barahona, Dominican Republic, 2018 (VT); *Vargas* 1062, *Pelazoneuron tuercheimii* (Donn.Sm.) A.R.Sm. & S.E.Fawc., Huehuetenango, Guatemala, 2005 (UC).

***Phegopteris* (C.Presl) Fée**—Fawcett 566, *Phegopteris connectilis* (Michx.) Watt, Michigan, U.S.A., 2016 (UC 2049132, VT); Moran 5420, *Phegopteris connectilis* (Michx.) Watt., Yilan, Taiwan, 1991 (UC 1593301); *Testo s.n.*, *Phegopteris decursive-pinnata* (H.C.Hall) Fée, Florida, U.S.A., 2019 (FLAS); Kuo 3371, *Phegopteris decursive-pinnata* (H.C.Hall) Fée, Nantou, Taiwan, 2012 (TAIF); Gilman 18022, *Phegopteris excelsior* A.V.Gilman & N.R.Patel, Vermont, U.S.A., 2018 (VT); Rothfels 3484, *Phegopteris hexagonoptera* Fée, Indiana, U.S.A., 2009 (DUKE).

***Plesioneuron* Holttum**—Smith 9348, *Plesioneuron archboldiae* (Copel.) Holttum, Viti Levu, Fiji, 1953 (UC 1438794); Wood 16859, *Plesioneuron attenuatum* (Brack.) Holttum, Upolu, Samoa, 2016 (PTBG); Johns 10052, *Plesioneuron aff. belense* (Copel.) Holttum, Mimika, Papua New Guinea, 1999 (UC 1877604); Karger 2796, *Plesioneuron costulisorum* (Copel.) Holttum, West Papua, Indonesia, 2011 (UC 2048199, Z); James SAJ0921, *Plesioneuron falcitipinnulum* (Copel.) Holttum, Siboma, Papua New Guinea, 2012 (UC 2043771); Fawcett 654, *Plesioneuron hopeanum* Holttum, Taveuni, Fiji, 2016 (UC 2049789, VT); Chen Wade2762, *Plesioneuron imbricatum* (Holttum) S.E.Fawc. & A.R.Sm., Kolombangara, Solomon Islands, 2013 (TAIF 444985, 444988, 444989, 444990, 445986, 445987); Chen Wade3623, *Plesioneuron imbricatum* (Holttum) S.E.Fawc. & A.R.Sm., Kolombangara, Solomon Islands, 2013 (TAIF); Karger 2718, *Plesioneuron keyserianum* (Rosenst.) S.E.Fawc. & A.R.Sm., West Papua, Indonesia, 2011 (UC 2048198, Z); Nitta 281, *Plesioneuron marquesicum* Holttum, Moorea, French Polynesia, 2008 (P, TNS, UC 1969692); Wood 10431, *Plesioneuron marquesicum* Holttum, Ua Pou, Marquesas Islands, (PTBG); Wood 13564, *Plesioneuron ponapeanum* (Hosok.) Holttum, Pohpei, Caroline Islands (PTBG); Fawcett 612, *Plesioneuron prenticei* Holttum, Viti Levu, Fiji, 2016 (UC, VT); Kessler 13948, *Plesioneuron savaiense* (Baker) Holttum, Oransbari, West Papua, 2008 (UC 2048609); SITW10504, *Plesioneuron subglabrum* Holttum, Isabel, Solomon Islands, 2016 (UC 2048662); Wood 11026, *Plesioneuron tahitense* Holttum, Huahine, Society Islands, 2004 (PTBG); Karger 1752, *Plesioneuron tuberculatum* (Ces.) Holttum, West Papua, Indonesia, 2008 (UC 2048613, Z); Karger 1015, *Plesioneuron* sp., Sulawesi, Gunung Duasudara, Indonesia, 2010 (UC 2048303, Z); Nitta 2772, *Plesioneuron* sp., Moorea, Society Islands, 2013 (GH, UC).

***Pneumatopteris* Nakai**—Schmidt 2167, *Pneumatopteris afra* (Christ) Holttum, Volta, Ghana, 1996 (UC 1617976); Mousset 144, *Pneumatopteris auctipinna* Holttum, Java, Indonesia, (UC 352868); Chen Wade1867, *Pneumatopteris callosa* (Blume) Nakai, Cibodas, Java, Indonesia, 2011 (TAIF 388639, 388640, 388641, 388642, 388643); SITW11069, *Pneumatopteris glandulifera* (Brack.) Holttum, Santa Cruz, Solomon Islands, 2016 (UC 2048653, 2048654); Kluge 7832, *Pneumatopteris humbertii* Holttum, Marojej, Madagascar, 2009 (UC); Lu 18318, *Pneumatopteris* aff. *lithophila* Holttum, Bontoc, Philippines, 2009 (TAIF 334863); Nitta 2748, *Pneumatopteris mesocarpa* (Copel.) Holttum, Moorea, Society Islands, 2013 (GH, UC); Fawcett 645, *Pneumatopteris parksii* Holttum, Taveuni, Fiji, 2016 (UC 2049795, VT); Fawcett 638, *Pneumatopteris* sp., Viti Levu, Fiji, 2016 (UC 2049796, VT); Wood 17058, *Pneumatopteris* sp., Savaii, Samoa, 2016 (PTBG); SITW11157, *Pneumatopteris* sp., Guadalcanal, Solomon Islands, 2016 (UC).

***Pronephrium* C.Presl**—Chen Wade2061, *Pronephrium affine* (Blume) C.Presl, West Java, Halimum, Indonesia, 2011 (TAIF 389026); Price 670, *Pronephrium aoristorum* (Harr.) S.E.Fawc. & A.R.Sm., Luzon, Philippines, 1970 (UC); Cicuzza 966, *Pronephrium celebicum* (Baker) Holttum, Sulawesi, Pono, Indonesia, 2008 (Z); Chen Wade3994, *Pronephrium granulosum* (C.Presl) Holttum, Negros, Philippines, 2014 (TAIF); Karger 722, *Pronephrium granulosum* (C.Presl) Holttum, Mindanao, Philippines, 2010 (Z 104927); Chen Wade4755, *Pronephrium hosei* (Baker) Holttum, Sabah, Borneo, 2016 (UC); Chen Wade2194, *Pronephrium menisciicarpon* (Blume) Holttum, Cultivated, Malaysia, 2012 (TAIF 430588); Chen Wade4719, *Pronephrium peltatum* (Alderw.) Holttum var. *aberrans* Holttum, Sabah, Borneo, 2016 (UC); Williams 208, *Pronephrium rhombeum* (Christ) Holttum, Luzon, Philippines, 1903 (UC 419282); Karger 912, *Pronephrium* aff. *xiphioides* (C.Chr.) Holttum, Lore Lindu, Sulawesi, 2010 (UC 2048294).

***Pseudocyclosorus* Ching**—Kuo 3372, *Pseudocyclosorus esquirolii* (Christ) Ching, Nantou, Taiwan, 2012 (TAIF); Zheng-yu 15516, *Pseudocyclosorus esquirolii* (Christ) Ching, Sichuan, China, 1996 (UC 1727977); Chen Wade1451, *Pseudocyclosorus* cf. *esquirolii* (Christ) Ching, Lam Dong, Vietnam, 2010 (TAIF 410818); Heng 21921, *Pseudocyclosorus falcilobus* (Hook.) Ching, Yunnan, China, 2004 (UC 1923513); Holttum s.n., *Pseudocyclosorus ornatipes* Holttum & J.W.Grimes, Kalimpong, India, 1972

(UC 1948785); Mwangulango 1103, *Pseudocyclosorus pulcher* (Bory ex Willd.) Holttum, Mbeya, Tanzania, 2003 (UC 1877798); Stewart 15940, *Pseudocyclosorus repens* (C.Hope) Ching, Uttarakhand, India, 1937 (UC 770798); Kuo 2913, *Pseudocyclosorus subochthodes* (Ching) Ching, Yunnan, China, 2012 (TAIF); Kuo 1391, *Pseudocyclosorus tylodes* (Kunze) Ching, Yunnan, China, 2010 (TAIF); Chen Wade2523, *Pseudocyclosorus tylodes* (Kunze) Ching, Guangxi, China, 2013 (TAIF); Kluge 7655, *Pseudocyclosorus* sp., Singani, Grand Comores, 2008 (UC 1924776).

***Pseudophegopteris* Ching**—Kessler 14142, *Pseudophegopteris aurita* (Hook.) Ching, West Papua, Wamena, Indonesia, 2008 (UC 2048595); Rothfels 4735A, *Pseudophegopteris* aff. *aurita* (Hook.) Ching, Kinabalu, Borneo, 2016 (UC); Togasi 1216, *Pseudophegopteris bukoensis* (Tagawa) Holttum, Honshu, Japan, 1955 (UC 1087169); Janssen 2725, *Pseudophegopteris cruciata* (Willd.) Holttum, Reunion, France, 2005 (P); Kuo 3887, *Pseudophegopteris hirtirachis* (C.Chr.) Holttum, Nantou, Taiwan, 2013 (TAIF); Degener 31419, *Pseudophegopteris keraudreniana* (Gaudich.) Holttum, Hawaii, U.S.A., 1967 (UC 1367107); Chang 20150715-004, *Pseudophegopteris levingei* (C.B.Clark) Ching, Nantou, Taiwan, 2015 (TAIF); Bartholomew 758, *Pseudophegopteris pyrriorhachis* (Kunze) Ching, Hubei, China, 1980 (UC 1493503); Rothfels 4735B, *Pseudophegopteris* aff. *rectangularis* (Zoll.) Holttum, Kinabalu, Borneo, 2016 (UC); Chang 20110703-009, *Pseudophegopteris subaurita* (Tagawa) Ching, Yilan, Taiwan, 2011 (TAIF); Miede 94-227-17, *Pseudophegopteris tibetana* Ching & S.K.Wu, Xizang, China, 1994 (UC 1747534); Chen Wade4136, *Pseudophegopteris yunkueiensis* (Ching) Ching, Lam Dong, Vietnam, 2014 (TAIF 458834, 458835, 458836).

***Rehottumia* S.E.Fawc. & A.R.Sm.**—Lorence 10592, *Rehottumia costata* (Brack.) S.E.Fawc. & A.R.Sm., Savaii, Samoa, 2016 (PTBG); Chen Wade4808, *Rehottumia ecallosa* (Holttum) S.E.Fawc. & A.R.Sm., Pahang, Peninsular Malaysia, 2017 (TAIF, KLU, UC); Chen Wade1842, *Rehottumia ecallosa* (Holttum) S.E.Fawc. & A.R.Sm., vel aff., Cibodas, Java, Indonesia, 2011 (TAIF 388637, 388638); Edmonds ME224, *Rehottumia hudsoniana* (Brack.) S.E.Fawc. & A.R.Sm., Hawaii, Kauai, U.S.A., 2014 (UC); Kessler 14129, *Rehottumia jernyi* (Holttum) S.E.Fawc. & A.R.Sm., West Papua, Indonesia, 2008 (UC2048579); Karger 183, *Rehottumia laevis* (Mett.) S.E.Fawc. & A.R.Sm., Panay, Philippines, 2009 (Z); Kuo 3500, *Rehottumia* aff. *laevis* (Mett.) Holttum, Bukidnon, Philippines, 2012 (UC); Chen Wade1900, *Rehottumia longipes* (Blume) S.E.Fawc. & A.R.Sm., Gede-Pangrango, Java, Indonesia, 2011 (TAIF 388228, 388229, 388230); Parks 16040, *Rehottumia macroptera* (Copel.) S.E.Fawc. & A.R.Sm., Eua, Tonga, 1926 (UC 297574); SITW11089, *Rehottumia magnifica* (Copel.) S.E.Fawc. & A.R.Sm., Santa Cruz, Solomon Islands, 2016 (UC 2048643); SITW10556, *Rehottumia magnifica* (Copel.) S.E.Fawc. & A.R.Sm., Santa Cruz, Solomon Islands, 2016 (UC 2048650, 2048651); Chen Wade4266, *Rehottumia* aff. *michaelis* (Holttum) S.E.Fawc. & A.R.Sm., Sabah, Malaysia, 2015 (TAIF 468030, 468031, 468032, 468033, 468034); Kuo 2051, *Rehottumia nitidula* (C.Presl) S.E.Fawc. & A.R.Sm., Laguna, Philippines, 2011 (TAIF); Kuo 540, *Rehottumia* aff. *nitidula* (C.Presl) Holttum, Mountain, Philippines, 2009 (UC); Kluge 7830, *Rehottumia remotipinna* (Bonap.) S.E.Fawc. & A.R.Sm., Marojej, Madagascar, 2009 (UC 2014697); Kluge 7830, *Rehottumia* cf. *remotipinna* (Bonap.) S.E.Fawc. & A.R. Sm., Marojej, Madagascar, 2009 (UC, Z); SITW11114, *Rehottumia rodigasiana* (T.Moore) S.E.Fawc. & A.R.Sm., Guadalcanal, Solomon Islands, 2016 (UC 2048645); Karger 1265, *Rehottumia sogerensis* (Gepp) S.E.Fawc. & A.R.Sm., Seram, Indonesia, 2010 (UC 2048301, Z); Elmer 9845, *Rehottumia* cf. *sogerensis* (Gepp) S.E.Fawc. & A.R.Sm., Negros, Philippines, 1908 (VT 197761); Kuo 963, *Rehottumia truncata* (Poir.) S.E.Fawc. & A.R.Sm., Pingtung, Taiwan, 2010 (TAIF); James 470, *Rehottumia* sp., Morobe, Papua New Guinea, 2012 (UC 2043754); SITW11115, *Rehottumia* sp., Guadalcanal, Solomon Islands, 2016 (UC 2048649); Chen Wade3630, *Rehottumia* sp., Kolombangara, Solomon Islands, 2013 (TAIF 460000); SITW11589, *Rehottumia* sp., Guadalcanal, Solomon Islands, 2016 (TAIF); Karger 1753, *Rehottumia* sp., West Papua, Indonesia, 2008 (UC 2048592, Z); Kuo 543, *Rehottumia* sp., Mountain, Philippines, 2009 (UC).

***Sphaerostephanos* J.Sm.**—Sundue 3775, *Sphaerostephanos* aff. *adenostegius* (Copel.) Holttum, Madang, Papua New Guinea, 2014 (UC 2049168); Kuo 565, *Sphaerostephanos* aff. *alcasidii* Holttum, Philippines, 2009 (TAIF); Karger 1467, *Sphaerostephanos appendiculatus* (Blume) Holttum, Tidore, Maluku Utara, 2010 (UC 2048331, Z); Kessler 13708, *Sphaerostephanos appendiculatus* (Blume) Holttum, Sulawesi, Indonesia, 2008 (GOET, UC 1930527); Kessler 13907, *Sphaerostephanos arbuscula* (Willd.) Holttum, Reunion, France, 2008 (UC 1925690); Sundue 3715,

- Sphaerostephanos archboldii* (C.Ch.) Holttum, Madang, Papua New Guinea, 2014 (UC 2049100); Kessler 14130, *Sphaerostephanos archboldii* (C.Ch.) Holttum, West Papua, Wamena, Indonesia, 2008 (UC 2048587); Conn 5509, *Sphaerostephanos archboldii* (C.Ch.) Holttum, Papua New Guinea, 2010 (UC 2043794); Sundue 3848, *Sphaerostephanos atasripii* (Rosenst.) Holttum, vel aff., Madang, Papua New Guinea, 2014 (UC 2049098); Karger 1022, *Sphaerostephanos* aff. *batjanensis* (Rosenst.) Holttum, Sulawesi, Gunung Duasudara, Indonesia, 2010 (UC 2048305, Z); Fawcett 701, *Sphaerostephanos beccarianus* (Ces.) S.E.Fawc. & A.R.Sm., Taveuni, Fiji, 2016 (UC 2049798, VT); SITW11593, *Sphaerostephanos braithwaitei* Holttum, Guadalcanal, Solomon Islands, 2016 (UC 2048659, 2048660, 2048661); Kessler 13850, *Sphaerostephanos brauseanus* (Holttum) S.E.Fawc. & A.R.Sm., West Papua, Indonesia, 2008 (UC 2048589); Karger 990, *Sphaerostephanos canescens* (Blume) Holttum, Sulawesi, Gunung Duasudara, Indonesia, 2010 (UC 2048288); Alston 16718, *Sphaerostephanos canescens* (Blume) Holttum, Tidore, Maluku Utara, (MICH); Grether 3971, *Sphaerostephanos cataractorum* (W.H.Wagner & Grether) Holttum, Manus, Admiralty Islands, 1945 (UC 732987); Karger 2801, *Sphaerostephanos confertus* (Brause) Holttum, West Papua, Indonesia, 2011 (UC 2048202, Z); Sundue 3850, *Sphaerostephanos confertus* (Brause) Holttum, Madang, Papua New Guinea, 2014 (UC 2049099); Chen Wade3098, *Sphaerostephanos decadens* (Baker) Holttum, Viti Levu, Fiji, 2013 (TAIF 439697); Kuo 3656, *Sphaerostephanos dichotrichoides* (Alderw.) Holttum, Bukidnon, Philippines, 2012 (UC); Chen Wade3113, *Sphaerostephanos doodioides* (Copel.) Holttum, Guadalcanal, Solomon Islands, 2013 (TAIF); Ranker 1460, *Sphaerostephanos elatus* (Bojer) Holttum, Reunion, France, 1992 (UC 1610044); Karger 2692, *Sphaerostephanos* cf. *flavoviridis* Holttum, West Papua, Indonesia, 2011 (UC 2048193, Z); Schuettelpelz 890, *Sphaerostephanos glandulosus* (Blume) S.E.Fawc. & A.R.Sm., Malaysia, (DUKE, KEP, S); James SAJ082, *Sphaerostephanos hastatopinnatus* (Brause) Holttum, New Britain, Papua New Guinea, 2011 (UC 2043793); Fawcett 640, *Sphaerostephanos heterocarpus* (Blume) Holttum, Viti Levu, Fiji, 2016 (UC 2049794, VT); Fawcett 619, *Sphaerostephanos heterocarpus* (Blume) Holttum, Viti Levu, Fiji, 2016 (UC 2049783, VT); Cicuzza 495, *Sphaerostephanos hirsutus* (Kunze ex Mett.) Holttum, Sulawesi, Pono, Indonesia, 2008 (UC, Z); Anderson 4119, *Sphaerostephanos hirtisorus* (C.Ch.) Holttum, Chiang Mai, Thailand, 1976 (UC 1432224); Chen Wade3559, *Sphaerostephanos hochreutineri* (Christ) Holttum, Vella Lavella, Solomon Islands, 2013 (TAIF 460030); Karger 1406, *Sphaerostephanos incisus* (Copel.) S.E.Fawc. & A.R.Sm., Bacan, Maluku Utara, Indonesia, 2010 (UC 2048291, Z); Karger 1071, *Sphaerostephanos lamii* Holttum, Buru, Maluku, 2010 (UC 2048332, Z); Kessler 13559, *Sphaerostephanos larutensis* (Bedd.) C.Ch., Peninsular Malaysia, Malaysia, 2008 (GOET, UC 1951607); Chen Wade3885, *Sphaerostephanos lastreoides* (C.Presl) Holttum, Negros, Philippines, 2014 (TAIF 455400); Chen Wade3979, *Sphaerostephanos lastreoides* (C.Presl) Holttum, Negros, Philippines, 2014 (TAIF 455815, 455816); Cicuzza 219, *Sphaerostephanos latebrosus* (Kunze ex Mett.) Holttum, Sulawesi, Bariri, Indonesia, 2007 (UC, Z); Wood 14100, *Sphaerostephanos maemonensis* (W.H.Wagner & Grether) Holttum, Kosrae, Caroline Islands, 2010 (PTBG); Chen Wade3957, *Sphaerostephanos magnus* (Copel.) Holttum, Negros, Philippines, 2014 (TAIF 454834, 454835, 454836, 454837); Chen Wade3995-2, *Sphaerostephanos* aff. *microlonchus* (Christ) S.E.Fawc. & A.R.Sm., Negros, Philippines, 2014 (TAIF 454807, 454808, 454809; VT 197691); Karger 2663, *Sphaerostephanos* aff. *mundus* (Rosenst.) Holttum, West Papua, Indonesia, 2011 (UC 2048196, Z); Karger 2809, *Sphaerostephanos novoguineensis* (Brause) Holttum, West Papua, Indonesia, 2011 (UC 2048203, Z); Rothfels 4803, *Sphaerostephanos oosorus* (Baker) Holttum, Mount Silam, Borneo, 2016 (UC 2048744); Cicuzza 185, *Sphaerostephanos oppositus* Holttum, Sulawesi, Bariri, Indonesia, 2007 (Z); Chen Wade1806, *Sphaerostephanos penniger* (Hook.) Holttum, Gunung Gede Pangrango National Park, Indonesia, 2011 (TAIF 388622, 388623, UC); Chen Wade4839, *Sphaerostephanos penniger* (Hook.) Holttum, Pahang, Peninsular Malaysia, 2017 (KLU, TAIF, UC); Karger 2645, *Sphaerostephanos pentaphyllus* (Rosenst.) S.E.Fawc. & A.R.Sm., West Papua, Indonesia, 2011 (UC 2048204, Z); Karger 2859, *Sphaerostephanos pilosquamatus* (Alderw.) Holttum, West Papua, Indonesia, 2011 (UC 2048191, Z); Kessler 13709, *Sphaerostephanos polycarpus* (Blume) Copel., Sulawesi, Indonesia, 2008 (GOET, UC); Cicuzza 466, *Sphaerostephanos polyotis* (C.Ch.) Holttum, Sulawesi, Pono, Indonesia, 2007 (UC, Z); Chang 20100917-024, *Sphaerostephanos productus* (Kaulf.) Holttum, Taitung, Taiwan, 2010 (TAIF); Kluge 7448, *Sphaerostephanos sarsinorum* Holttum, Sulawesi, Korekambu, Indonesia, 2007 (BO, UC); Chen Wade2965, *Sphaerostephanos scandens* Holttum, Rendova, Solomon Islands, 2013 (TAIF 448614); Kluge 9201, *Sphaerostephanos scopulorum* (Holttum) S.E.Fawc. & A.R.Sm., West Papua, Indonesia, 2008 (UC 2048622); Karger 247, *Sphaerostephanos sessilipinna* (Copel.) Holttum, Panay, Philippines, 2009 (Z); Chen Wade2027-1, *Sphaerostephanos stipellatus* (Blume) Holttum, West Java, Halimam, Indonesia, 2011 (TAIF 388183, 388184); Sundue 3752, *Sphaerostephanos subappendiculatus* (Copel.) S.E.Fawc. & A.R.Sm., Madang, Papua New Guinea, 2014 (UC 2049167, VT); Nitta 3025, *Sphaerostephanos subjectinatus* (Copel.) Holttum, Moorea, Society Islands, 2013 (GH, UC); Karger 2668, *Sphaerostephanos superbus* (Brause) S.E.Fawc. & A.R.Sm., West Papua, Indonesia, 2011 (UC, Z); Kuo 878, *Sphaerostephanos taiwanensis* (C.Ch.) Holttum ex C.M.Kuo, Pingtung, Taiwan, 2010 (TAIF); Karger 1586, *Sphaerostephanos urdanatensis* (Copel.) Holttum, Mindanao, Philippines, 2010 (UC 2048235; Z 104920); Chen Wade2816, *Sphaerostephanos veitchii* Holttum, Ranonga, Solomon Islands, 2013 (TAIF 445062); Grether 4202, *Sphaerostephanos vestigiatus* (Copel.) Holttum, Los Negros, Admiralty Islands, 1945 (UC 732711); Rinehart 21351, *Sphaerostephanos warburgii* (Kuhn & Christ) Holttum, Guam, U.S.A., 1991 (UC 1734677); Kessler 13952, *Sphaerostephanos womersleyi* (Holttum) S.E.Fawc. & A.R.Sm., West Papua, Indonesia, 2008 (UC 2048619); Kluge 9088, *Sphaerostephanos* sp., West Papua, Indonesia, 2008 (UC 2048624); Kluge 9071, *Sphaerostephanos* sp., West Papua, Indonesia, 2008 (UC 2048584); Karger 544, *Sphaerostephanos* sp., Luzon, Philippines, 2009 (UC); SITW11650, *Sphaerostephanos* sp., Guadalcanal, Solomon Islands, 2016 (UC 2048648); Chen Wade4923, *Sphaerostephanos* sp., Negros, Philippines, 2017 (CMUH, PNH, TAIF); Co 3474, *Sphaerostephanos* sp., Luzon, Philippines, 1991 (MICH); Karger 443, *Sphaerostephanos* sp., Mindanao, Philippines, 2009 (Z); Karger 2558, *Sphaerostephanos* sp., West Papua, Indonesia, 2011 (UC, Z).
- Stegnogramma Blume**—Chen Wade1902, *Stegnogramma aspidioides* Blume, Java, Indonesia, 2011 (TAIF); Yu 655, *Stegnogramma dictyoclioides* Ching, Pingtung, Taiwan, (PE, TAIF); Kuo 1885, *Stegnogramma griffithii* (T.Moore) K.Iwats., Tam Dao, Vietnam, 2010 (TAIF); Kuo 4240, *Stegnogramma mingchegensis* (Ching) X.C.Zhang & L.J.He, Fukien, China, 2015 (TAIF); Chang 20140714044, *Stegnogramma sagittifolia* (Ching) L.J.He & X.C.Zhang, Guizhou, China, 2014 (TAIF); Kuo 2368, *Stegnogramma wilfordii* (Hook.) Seriz., Taipei, Taiwan, 2011 (TAIF); Chen Wade4167, *Stegnogramma* sp., Lam Dong, Vietnam, 2014 (TAIF); WXP 149, *Stegnogramma* sp., Yunnan, China, 2010 (PE).
- Steiropteris (C.Ch.) Pic.Serm.**—Fuentes 10972, *Steiropteris buchtienii* (A.R.Sm.) Salino & T.E.Almeida, La Paz, Bolivia, 2006 (UC 1921877); Christenhusz 2795, *Steiropteris clypeolulata* (Desv.) Pic.Serm., Guadeloupe, 2003 (UC 1788485); Fawcett 464, *Steiropteris deltoidea* (Sw.) Pic.Serm., Adjuntas, Puerto Rico, 2016 (VT); Possley 215, *Steiropteris deltoidea* (Sw.) Pic.Serm., Jayuya, Puerto Rico, 2016 (MAPR); Meier 4771, *Steiropteris fendleri* (D.C.Eaton) Pic.Serm., Yaracuy, Venezuela, 1999 (UC 1737148); Jimenez 1061, *Steiropteris gardneriana* (Baker) Pic.Serm., La Paz, Bolivia, 2001 (GOET, LPB, UC 1764496); Hill 28047, *Steiropteris glandulosa* (Desv.) Pic.Serm., St. Patrick, Dominica, 1996 (VT 197839); Testo 1020, *Steiropteris glandulosa* (Desv.) Pic.Serm. var. *brachyodus* (Kunze) Salino & T.E.Almeida, Puntarenas, Costa Rica, 2016 (VT); Tuomisto 10697, *Steiropteris glandulosa* (Desv.) Pic.Serm. var. *brachyodus* (Kunze) Salino & T.E.Almeida, Napo, Ecuador, 1997 (UC 1788318); Gudino 1326, *Steiropteris glandulosa* (Desv.) Pic.Serm. var. *longipilosa* (A.R.Sm.) Salino & T.E.Almeida, Pastaza, Ecuador, 1991 (UC 1597601); Labiak 2993, *Steiropteris hatschbachii* (A.R.Sm.) Salino & T.E.Almeida, Parana, Brazil, 2003 (UC 1926875); Testo 1227, *Steiropteris leprieurii* (Hook.) Pic.Serm. var. *subcostalis* (A.R.Sm.) A.R.Sm., Heredia, Costa Rica, 2017 (VT); Churchil 3614, *Steiropteris leprieurii* (Hook.) Pic.Serm. var. *subcostalis* (A.R.Sm.) A.R.Sm., Cartago, Costa Rica, 1980 (VT 197835); Mexia 4904, *Steiropteris mexiae* (Copel. ex C.Ch.) Salino & T.E.Almeida, Minas Gerais, Brazil, 1930 (UC 466421); Salino 2003, *Steiropteris mexiae* (Copel. ex C.Ch.) Salino & T.E.Almeida, Minas Gerais, Brazil, 2003 (UC); Tuomisto 11636, *Steiropteris pennellii* (A.R.Sm.) Salino & T.E.Almeida, Napo, Ecuador, 1998 (UC 1788328); Holm-Nielsen 2912, *Steiropteris polyphlebia* (C.Ch.) Salino & T.E.Almeida, Cotopaxi, Ecuador, 1973 (UC 1437100); Salino 10229, *Steiropteris polypodioides* (Raddi) Salino & T.E.Almeida, São Paulo, Brazil, 2005 (UC 2047328); Nitta 2321, *Steiropteris seemannii* (J.Sm.) Salino & T.E.Almeida, Alajuela, Costa Rica, 2013 (GH, UC); Moran 3249, *Steiropteris seemannii* (J.Sm.) Salino & T.E.Almeida, Alajuela, Costa Rica, 1983 (UC 1265902); Grayum 3239, *Steiropteris valdepiolosa* (Baker) Pic.Serm., Heredia, Costa Rica, 1983 (UC 1490562); Matos 1870, *Steiropteris villosa* (Link) Salino & T.E.Almeida, 2010 (DUKE); Testo 1442, *Steiropteris* sp., Chocó, Colombia, 2017 (VT).
- Strophocaulon S.E.Fawc. & A.R.Sm.**—Fawcett 697, *Strophocaulon invisum* (G.Forst.) S.E.Fawc. & A.R.Sm., Taveuni, Fiji, 2016 (UC 2049790, VT.); Kluge 7791, *Strophocaulon unitum* (L.) S.E.Fawc. &

A.R.Sm., Singani, Grand Comores, 2008 (UC 1924777); *Fawcett* 641, *Strophocaulon unitum* (L.) S.E.Fawc. & A.R.Sm., Viti Levu, Fiji, 2016 (UC 2049788, VT).

Thelypteris **Schmidel**—*Rothfels* 4667, *Thelypteris confluens* (Thunb.) C.V.Morton, Kwazulu-Natal, South Africa, 2015 (UC); *Fawcett* 569, *Thelypteris palustris* Schott, Michigan, U.S.A., 2016 (UC 2049130, VT);

Arsene 1, *Thelypteris palustris* Schott, Michoacán, Mexico, 1910 (UC 477810); *Testo* 1645, *Thelypteris palustris* Schott, Florida, U.S.A., 2019 (FLAS).

Trigonospora **Holtum**—*Ballard* 1393, *Trigonospora obtusiloba* Sledge, Hedigala, Sri Lanka, 1951 (UC 1948787); *Ballard* 1522, *Trigonospora zeylanica* (Ching) Sledge, Sri Lanka, 1951 (UC 194876).