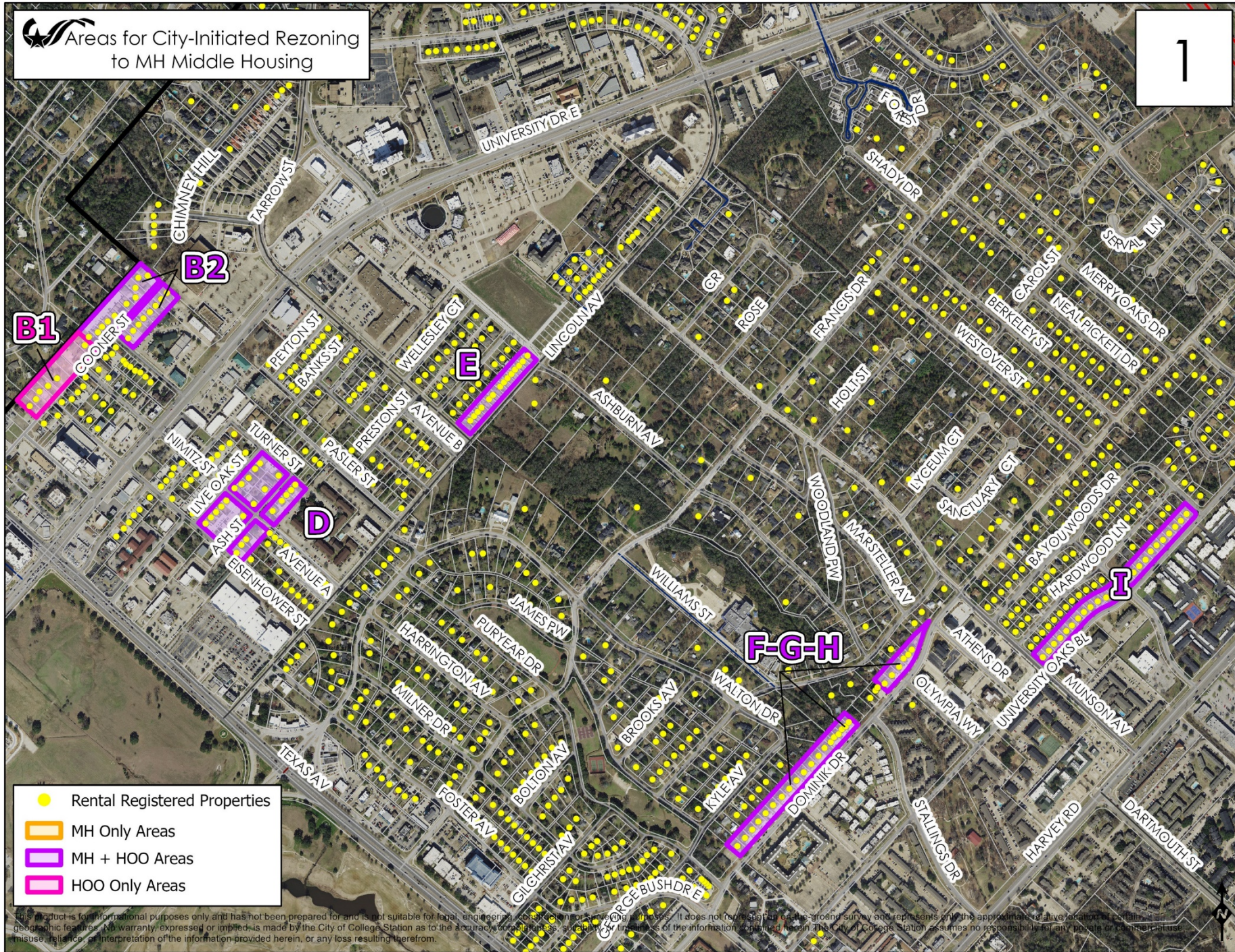


# **City-Initiated Rezoning to MH Middle Housing and/or H00 High Occupancy Overlay**



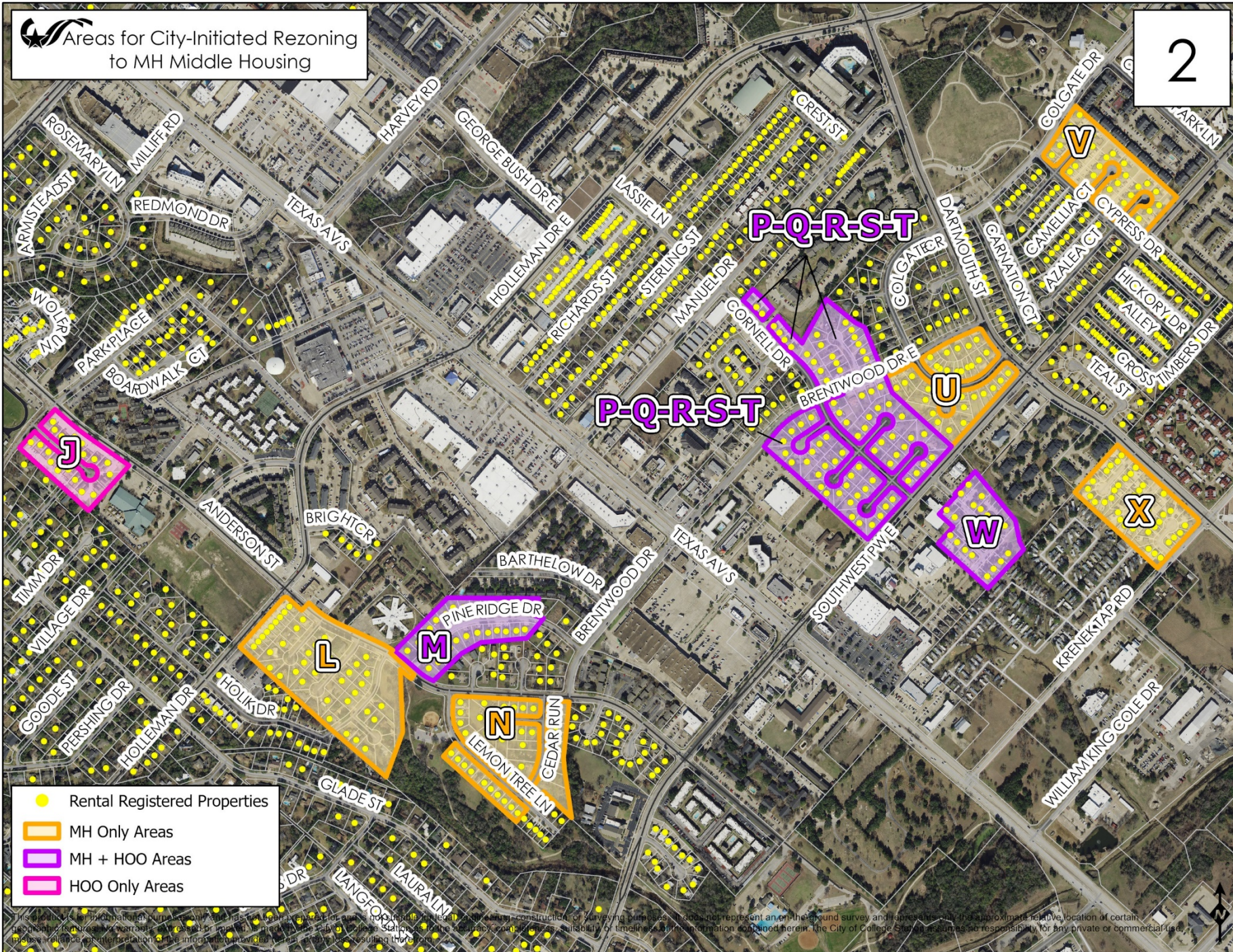
 Areas for City-Initiated Rezoning to MH Middle Housing



- Rental Registered Properties
- MH Only Areas
- MH + HOO Areas
- HOO Only Areas

This product is for informational purposes only and has not been prepared for and is not suitable for legal, engineering, construction, or planning purposes. It does not represent an on-the-ground survey and represents only the approximate relative location of certain geographic features. No warranty, expressed or implied, is made by the City of College Station as to the accuracy, completeness, suitability, or timeliness of the information contained herein. The City of College Station assumes no responsibility for any private or commercial use, misuse, reliance, or interpretation of the information provided herein, or any loss resulting therefrom.

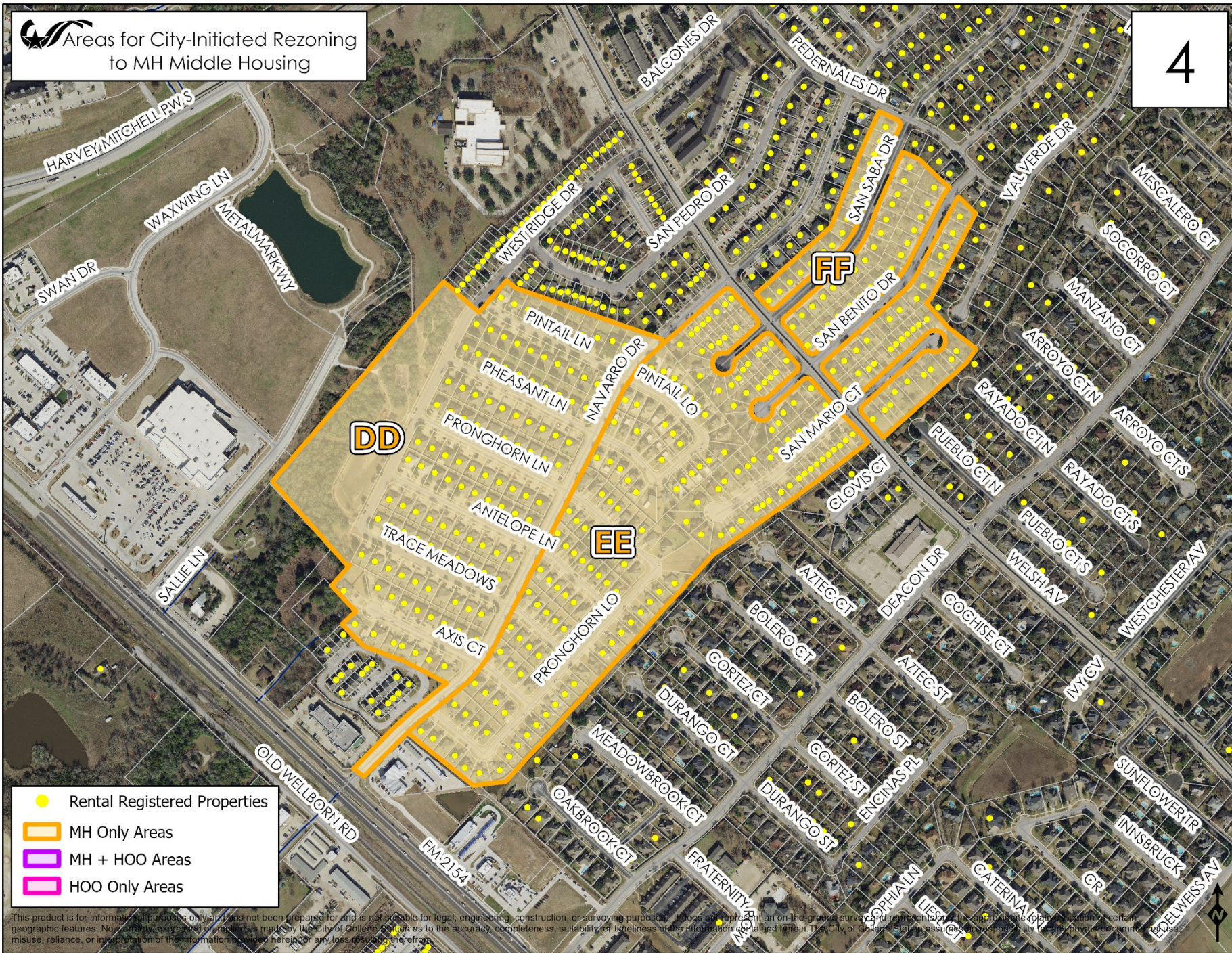
 Areas for City-Initiated Rezoning  
to MH Middle Housing



This document is for informational purposes only and does not constitute an offer of insurance or any other financial product. It does not represent an on-the-ground survey and represents only the approximate relative location of certain geographic features. No warranty is made by the City of College Station as to the accuracy, completeness, suitability, or timeliness of the information contained herein. The City of College Station assumes no responsibility for any private or commercial use, misuse, or misinterpretation of the information provided herein, or any claims resulting therefrom.



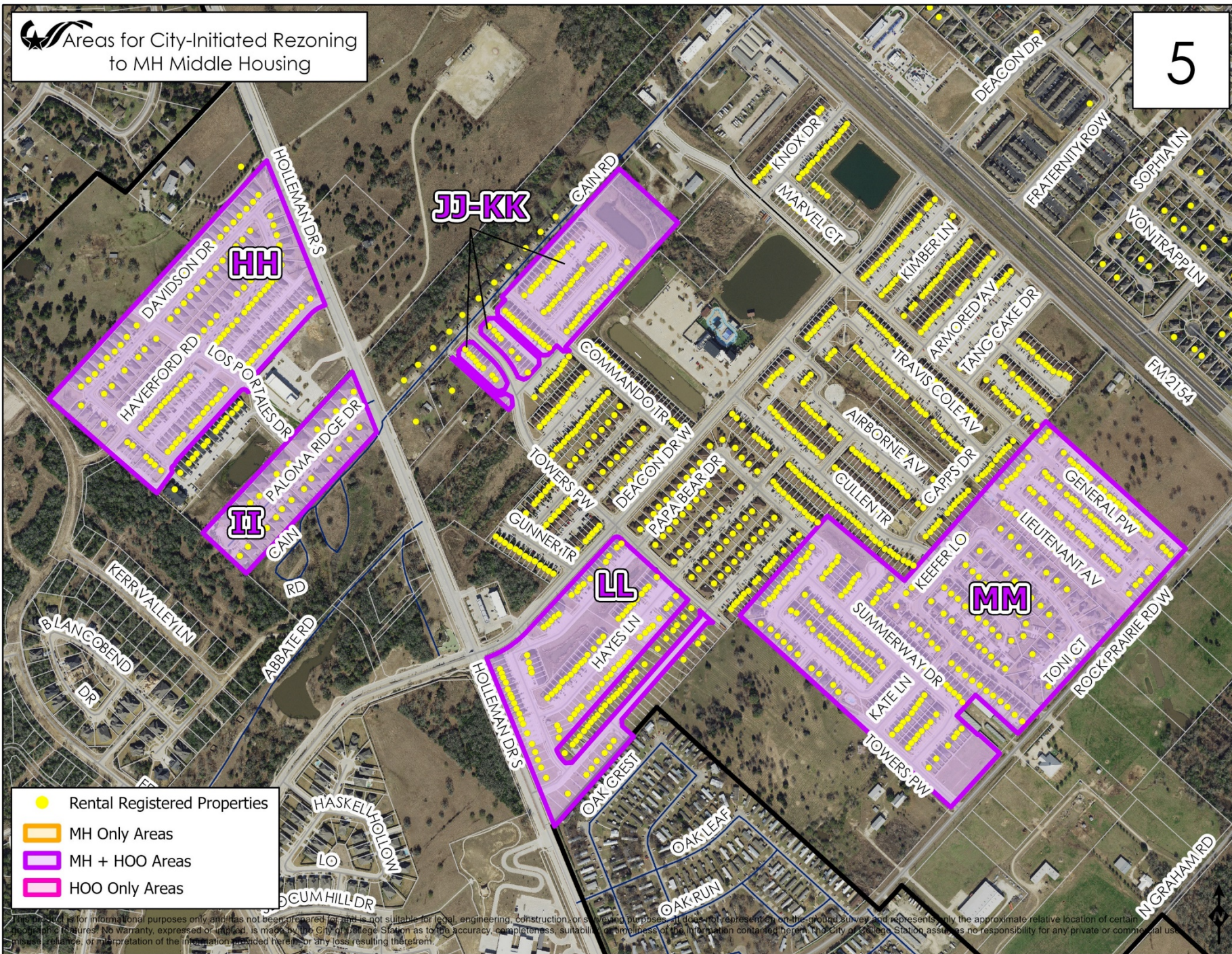
 Areas for City-Initiated Rezoning to MH Middle Housing




- Rental Registered Properties
- MH Only Areas
- MH + HOO Areas
- HOO Only Areas

This product is for informational purposes only and has not been prepared for and is not suitable for legal, engineering, construction, or surveying purposes. It does not represent an on-the-ground survey and represents only the approximate location of certain geographic features. No warranty, expressed or implied, is made by the City of College Station as to the accuracy, completeness, suitability, or timeliness of the information contained herein. The City of College Station assumes no responsibility for any private or commercial use, misuse, reliance, or interpretation of the information provided herein or any loss resulting therefrom.

 Areas for City-Initiated Rezoning to MH Middle Housing



-  Rental Registered Properties
-  MH Only Areas
-  MH + HOO Areas
-  HOO Only Areas

This map is for informational purposes only and has not been prepared for and is not suitable for legal, engineering, construction, or surveying purposes. It does not represent an on-the-ground survey and represents only the approximate relative location of certain geographic features. No warranty, expressed or implied, is made by the City of College Station as to the accuracy, completeness, suitability, or timeliness of the information contained herein. The City of College Station assumes no responsibility for any private or commercial uses, misuses, reliance, or misinterpretation of the information provided herein or any loss resulting therefrom.

# Rezoning Criteria

- Whether the proposal is consistent with the Comprehensive Plan;
- Whether the uses permitted by the proposed zoning district will be appropriate in the context of the surrounding area;
- Whether the property to be rezoned is physically suitable for the proposed zoning district;
- Whether there is available water, wastewater, stormwater, and transportation facilities generally suitable and adequate for uses permitted by the proposed zoning district; and
- The marketability of the property.

