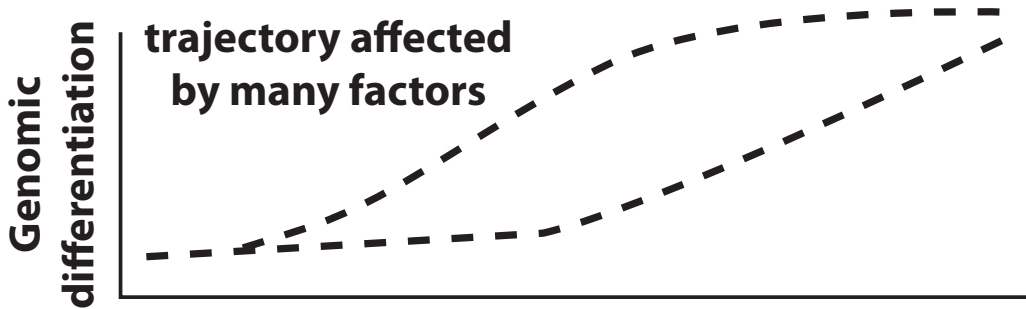
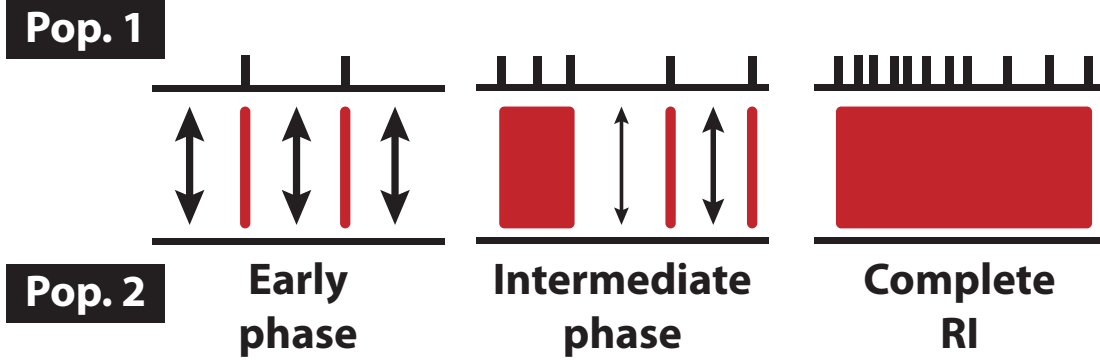
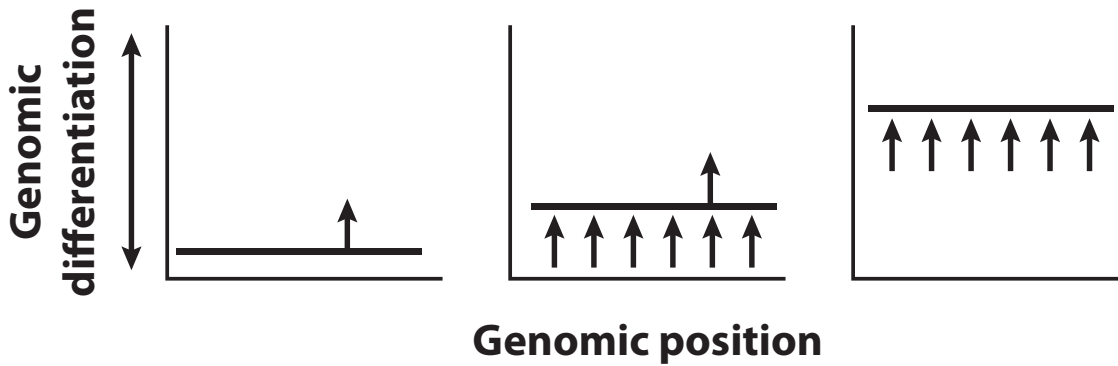


**a Phases of speciation and genomic differentiation**



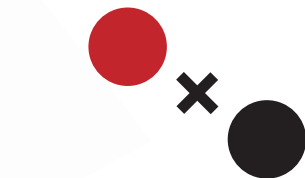
**b Genomic differentiation in *Timema* stick-insects**



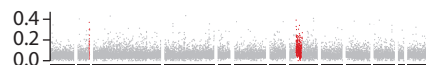
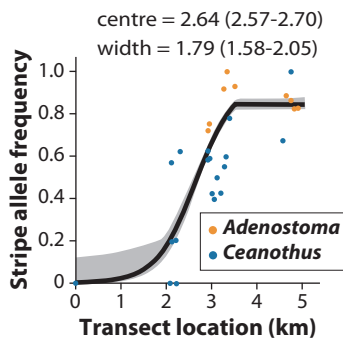
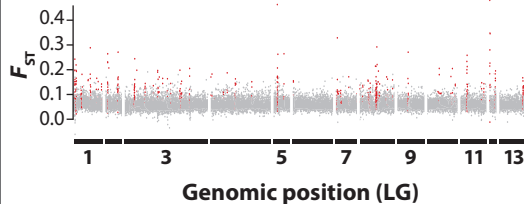
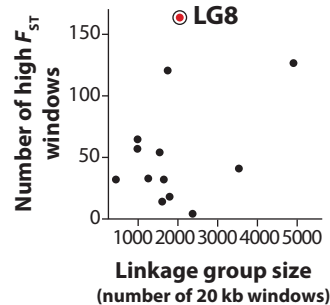
**selection on colour-pattern loci**



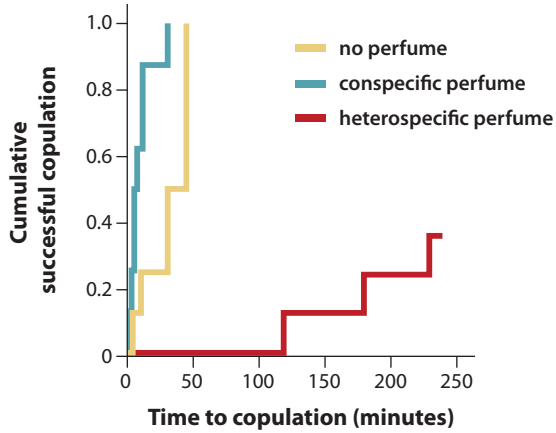
**differentiation in mate choice / CHCs**



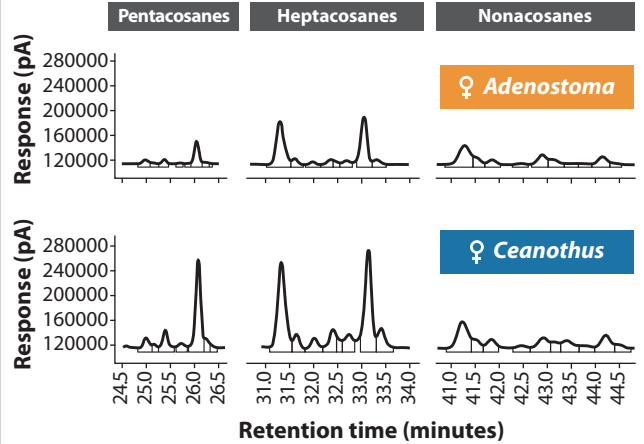
**complete RI / spatial separation**

**a Ecotypes and host plants****Adenostoma****Ceanothus****b Hidden Markov Model analysis of heterogeneous genetic differentiation****HV *T. cristinae*****R12 *T. cristinae*****MR1 *T. cristinae*****LAPRC *T. cristinae*****Genomic position (LG)****Genomic position (LG)****c Allele frequency cline****d Differentiation between experimental populations on different hosts****e Number of high  $F_{ST}$  windows and linkage group size**

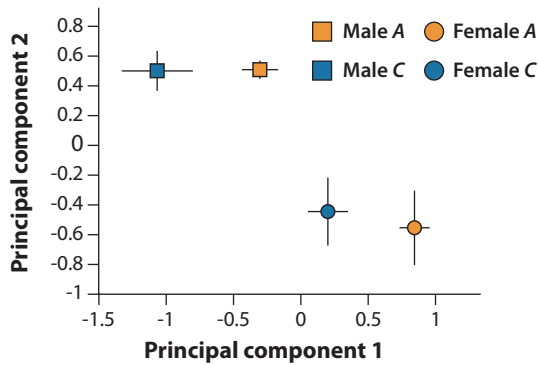
### a Perfuming experiments



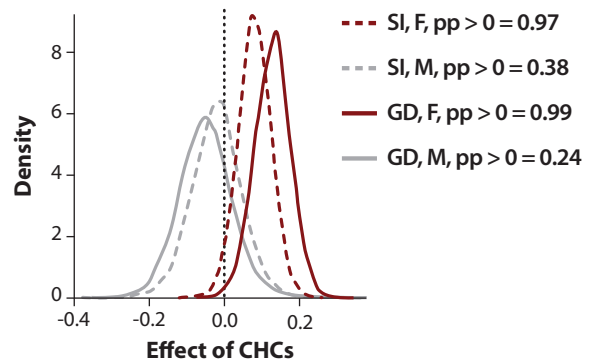
### b Profiles of methylated CHCs



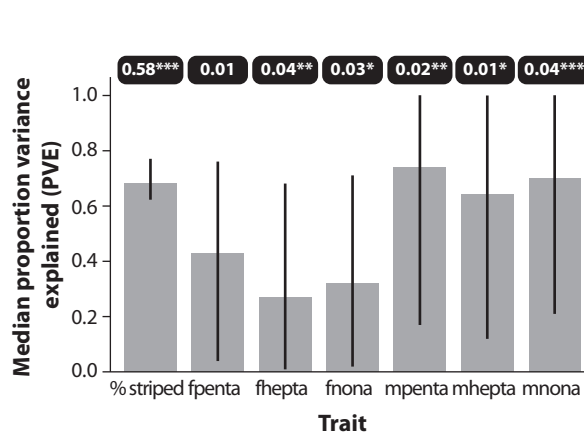
### c CHC differences between ecotypes and sexes



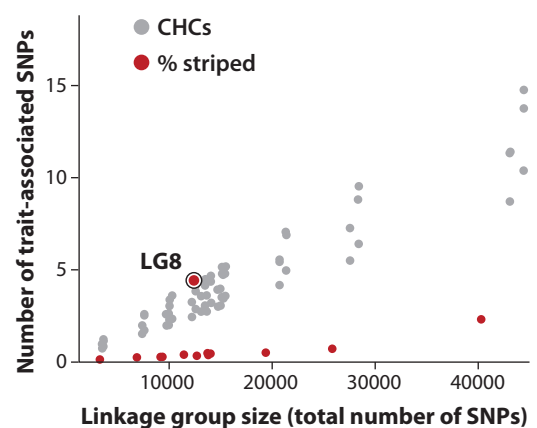
### d CHCs, sexual isolation (SI), and genomic differentiation (GD)



### e Hyper-parameter estimates of genetic architecture

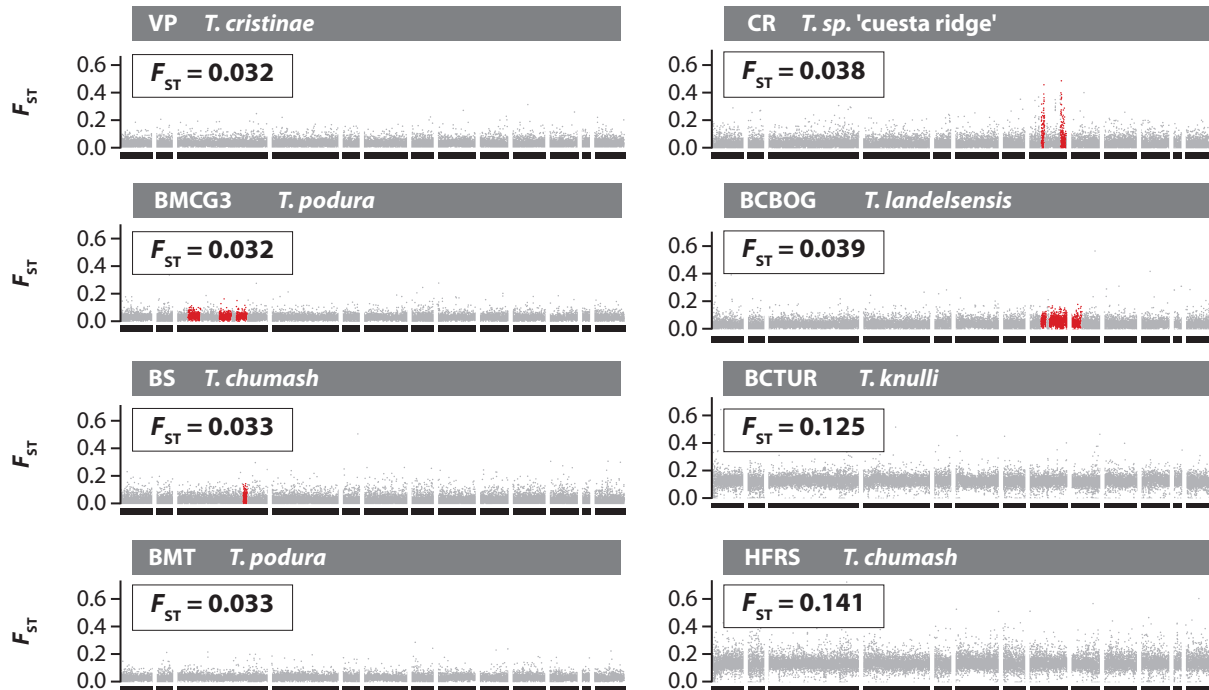


### f Number of trait-associated SNPs and linkage group size

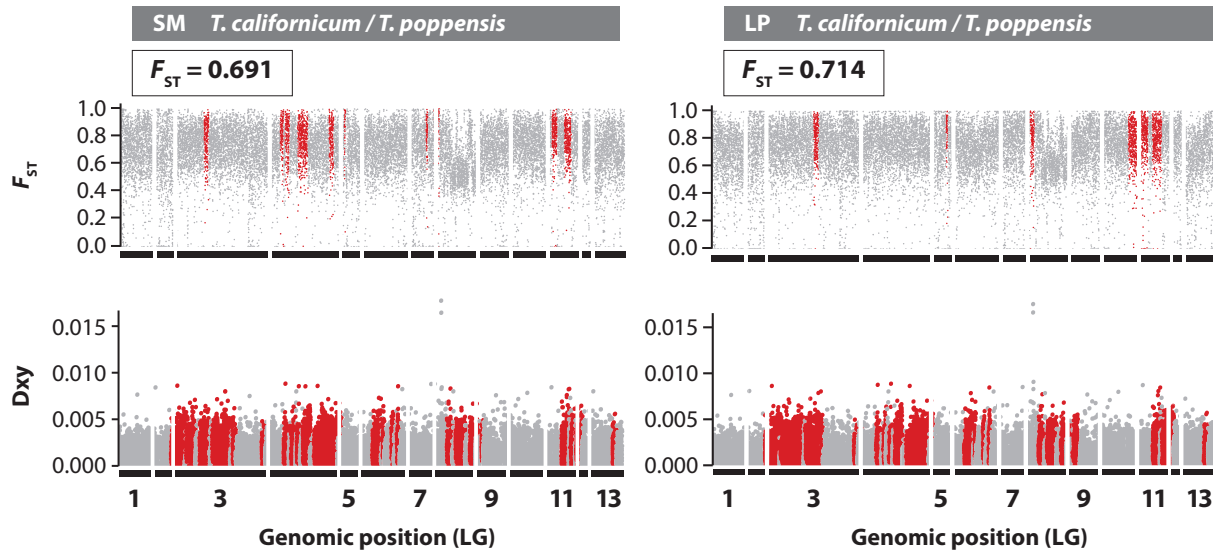


# Hidden Markov Model analysis of heterogeneous genetic differentiation

## Ecotypes within species

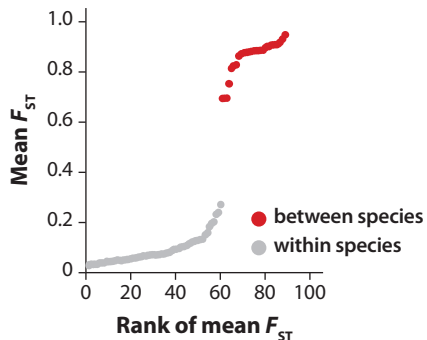


## Species pair

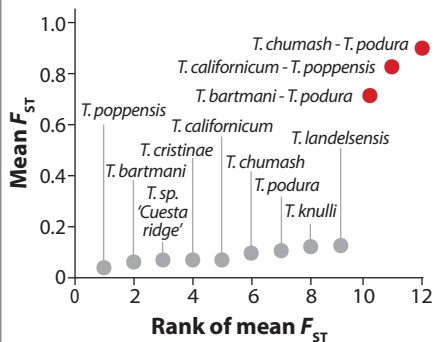




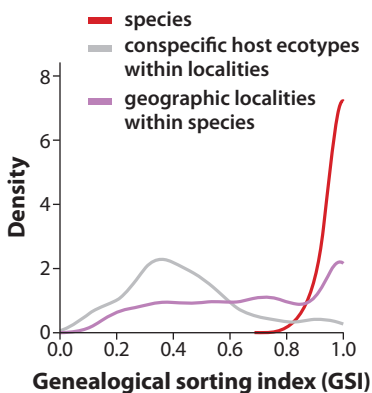
**a** A gap in genomic differentiation in sympatry in *Timema*



**b** Mean differentiation per species and species pair



**c** Genealogical sorting index



**d** Dated *Timema* phylogeny

