

Notable Additions and Changes to Washington's Flora



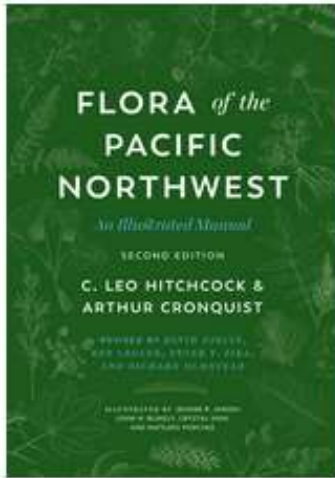
Photo by Gary Brill

David E. Giblin, Ph.D.
University of Washington Herbarium
BurkeMuseum

<http://www.pnwherberia.org/florapnw.php>

Flora of the Pacific Northwest, 2nd Edition
Burke Museum Herbarium & University of Washington Press

HOME ABOUT THE FLORA TREATMENTS CHECKLIST SUPPORT CONTACT US PHYLOGENETICS



- » Treatment summary
- » Treatment authors
- » [Errata & minor changes](#)
- » Revised Treatments

Sign In

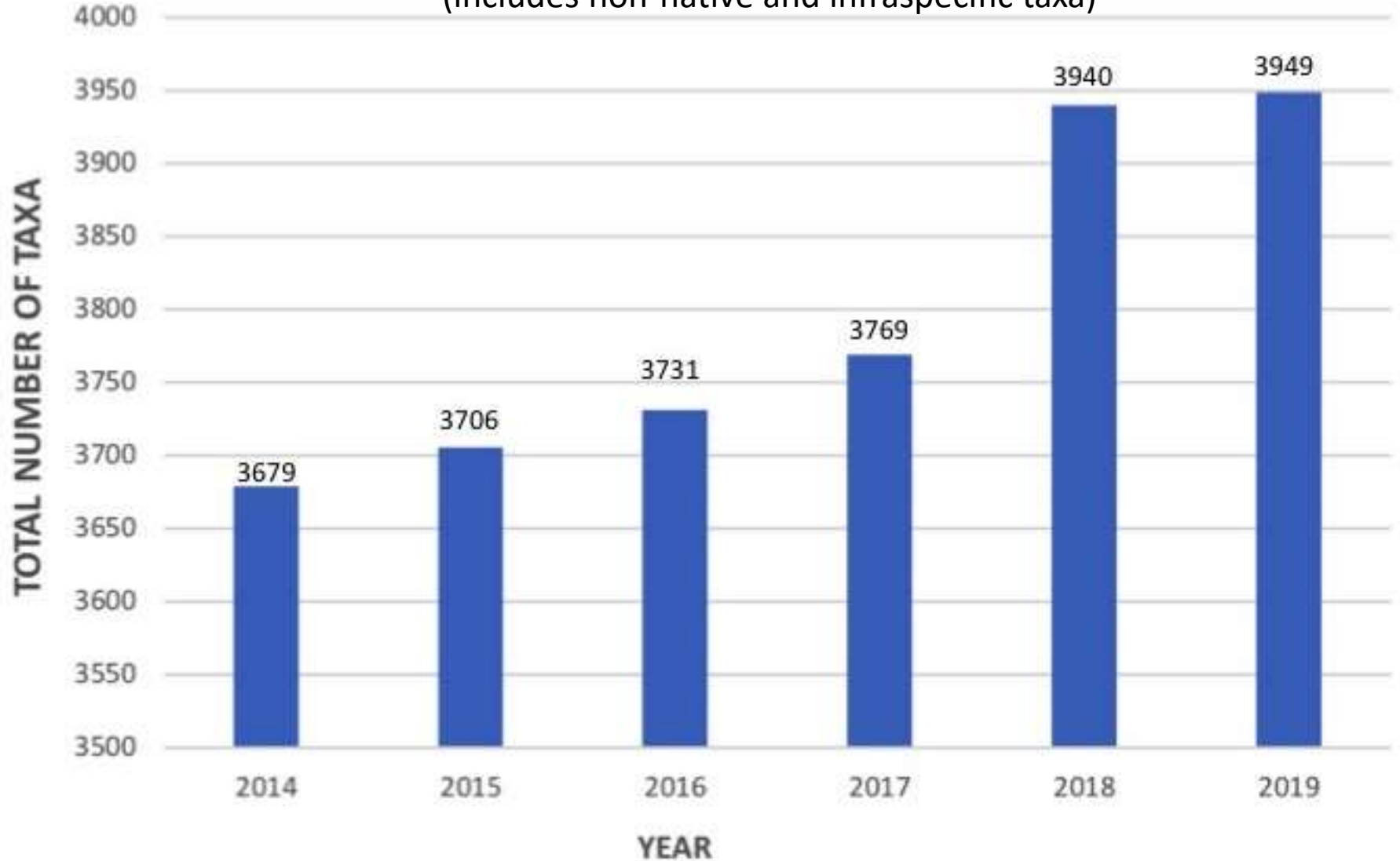
Book of Pacific Northwest botany

The Herbarium at the Burke Museum has completed a new edition of *the Pacific Northwest*, based on the original manual by Hitchcock and Arthur Cronquist. The Second Edition is published by the University of Washington Press and resellers.

The original, 730-page, single volume book was designed by the authors to be a portable plant identification manual for professional and amateur botanists. Even today it remains a singular piece of scholarship and a model for how to produce a flora. The Second Edition has been fully updated to include all native and naturalized taxa presently known from the region, with up-to-date nomenclature and classifications, while maintaining the original's familiar layout, styles, and use of illustrated keys.

Washington Flora Total Richness: 2014-2019

(includes non-native and infraspecific taxa)



Nomenclatural/Taxonomic Updates

- Viburnaceae
 - Formerly Adoxaceae
 - In PNW contains *Adoxa*, *Sambucus*, *Viburnum*
 - Issue of priority
- Resurrecting Aceraceae (*Acer*) and Hippocastanaceae (*Aesculus*)
 - Segregated from Sapindaceae based on recognition of Xanthoceraceae (2010)

Buerki et al., *Plant Ecology and Evolution*, 2010



Figure 1 – A, best maximum likelihood phylogenetic tree for Sapindaceae s. lat.; B, relationships between and within Aceraceae and Hippocastanaceae; C, relationships within subfamily Dodonaeoideae. Bootstrap supports are indicated above branches. COS = Cossiniaceae; CUP = Cupaniaceae; DOD = Dodonaeae; DOR = Doratoxyleae; HAR = Harpullieae. The definition of the groups follows Buerki et al. (2009).

Synthyris → *Veronica*

- A monophyletic clade nested within *Veronica*



Synthyris missurica ssp. *stellata* → *Veronica missurica* ssp. *stellata*

Photo by Gerry Carr.

Synthyris lanuginosa →
Veronica dissecta var. *lanuginosa*

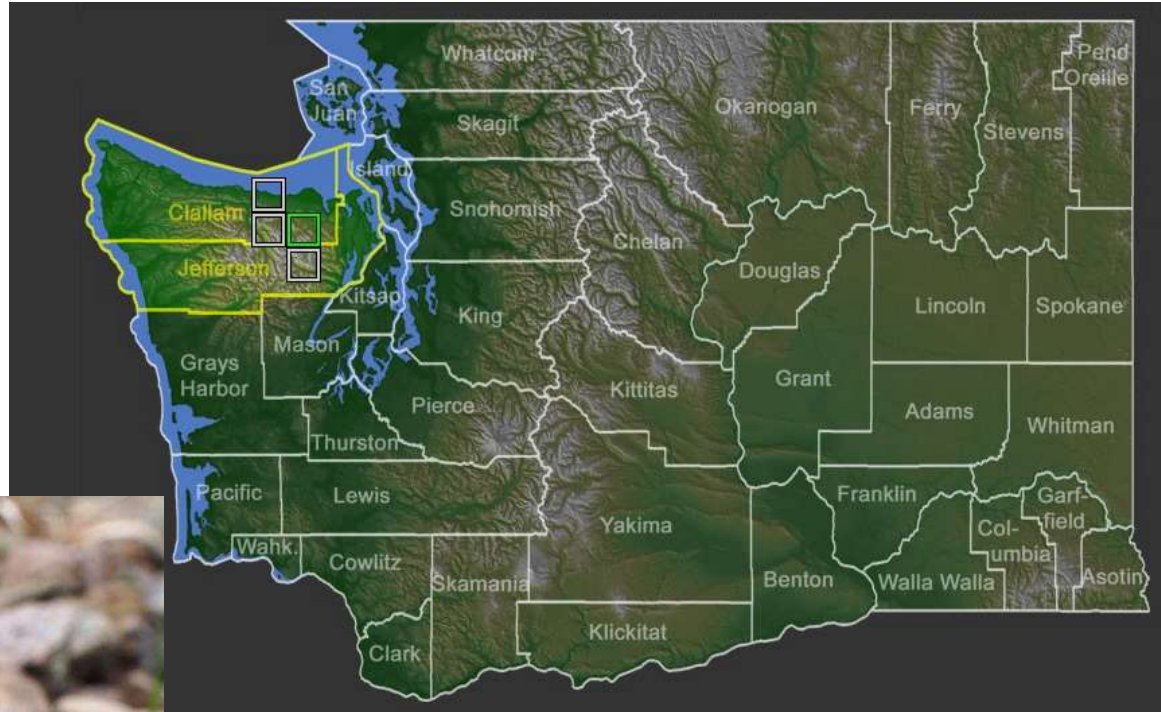


Photo by Matt Below

Ertter, B. 2019. *Potentilla jepsonii* var. *kluanensis* (Rosaceae): A new variety from Yukon and Alaska to Washington. *Phytoneuron* 2019-15: 1–8. Published 25 April 2019. ISSN 2153 733X

***POTENTILLA JEPSONII* VAR. *KLUANENSIS* (ROSACEAE):
A NEW VARIETY FROM YUKON AND ALASKA TO WASHINGTON**

BARBARA ERTTER

University and Jepson Herbaria
University of California
Berkeley, California 94720-2465
ertter@berkeley.edu

Snake River Plains Herbarium
Boise State University
Boise, Idaho 83725

Harold M. Tucker Herbarium & Orma J. Smith Museum of Natural History
The College of Idaho
Caldwell, Idaho 83605



Figure 5. Flower of *Potentilla jepsonii* var. *kluanensis* (left; Erter et al. 22866) compared to significantly larger flower of co-occurring *P. pensylvanica* (right; Erter et al. 22867).

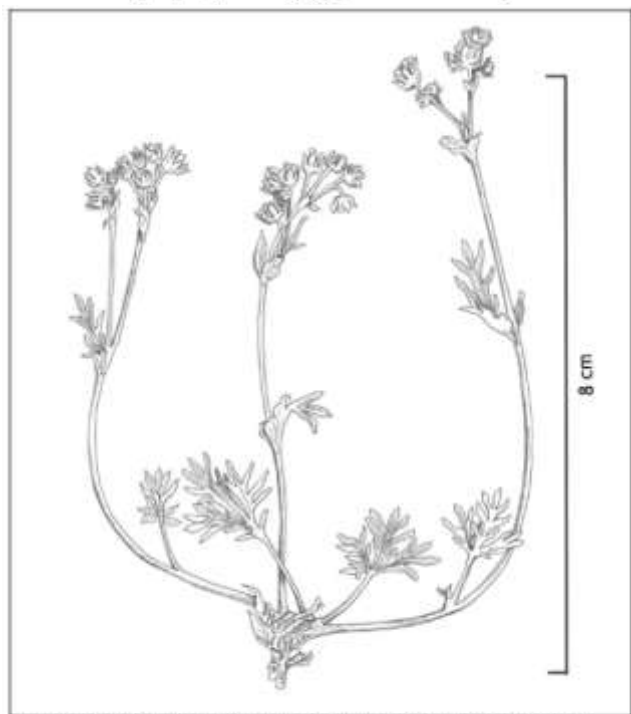


Figure 2. Habit of *Potentilla jepsonii* var. *kluanensis*: Drawing by K. Peppas, based on Erter et al. 22866.



Potentilla jepsonii Erter var. *kluanensis* Erter
 Determined by *Barbara S. Patten*
 at the University of Washington
Quilley, 1978

Plants of Washington
 Collected for the University of Washington

Potentilla nivea L.
 OKANOGAN CO: In tundra of alpine
 vegetation, Barley Peak, just S.
 of Mt. Chepeha. Possibly gabbro
 rock.
 elev., ca. 1500 ft.

A. S. Kruckeberg 6345
 23 July 1978

DATABASED

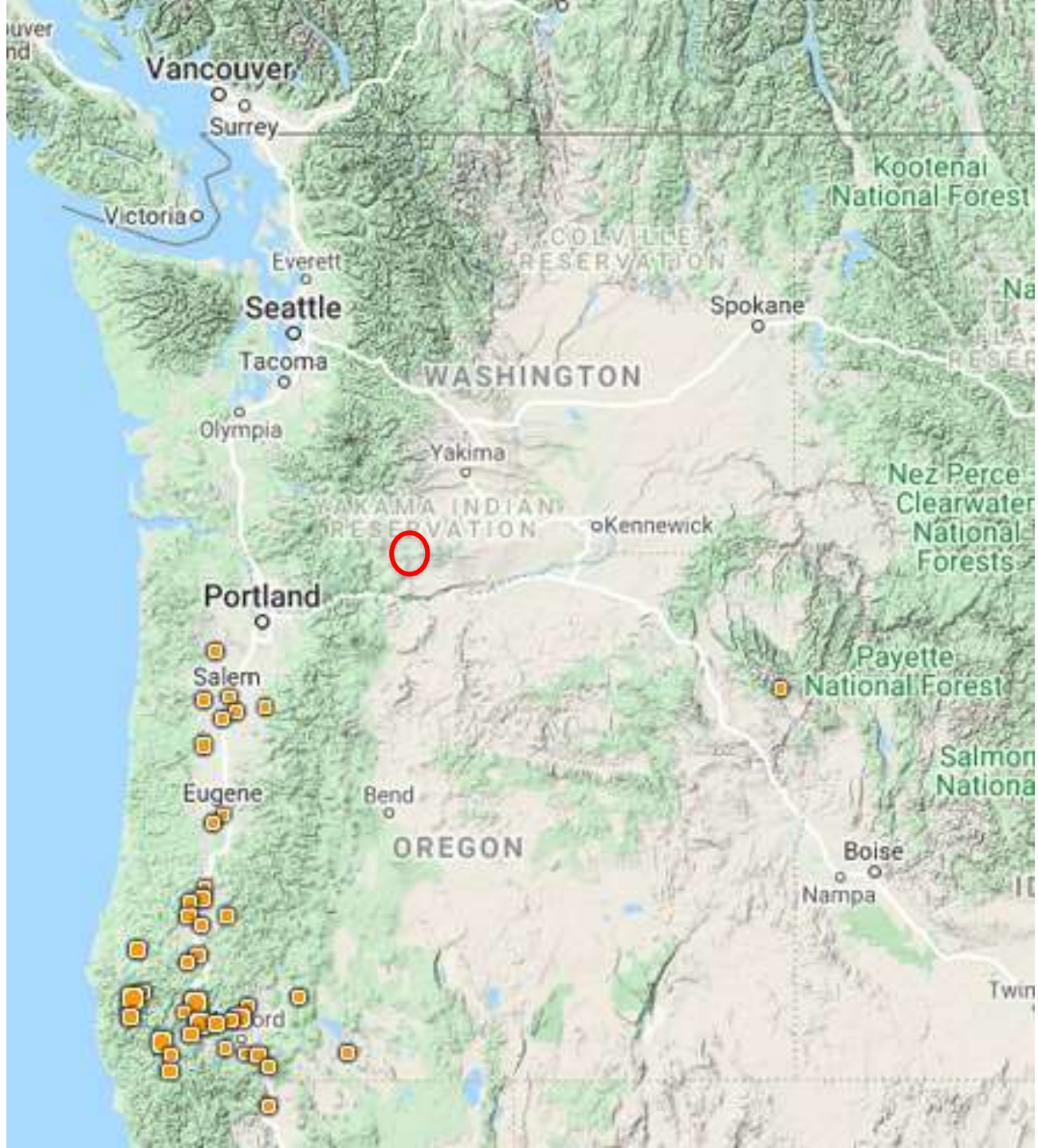
Resolving *P. jepsonii* var. *kluanensis* with *Flora PNW* 2nd edition *Potentilla* treatment

- *P. jepsonii* synonymized within *P. pensylvanica* var. *ovium*
- Treatment prioritized for reconsideration and revision
- WNHP Review List 2 taxon

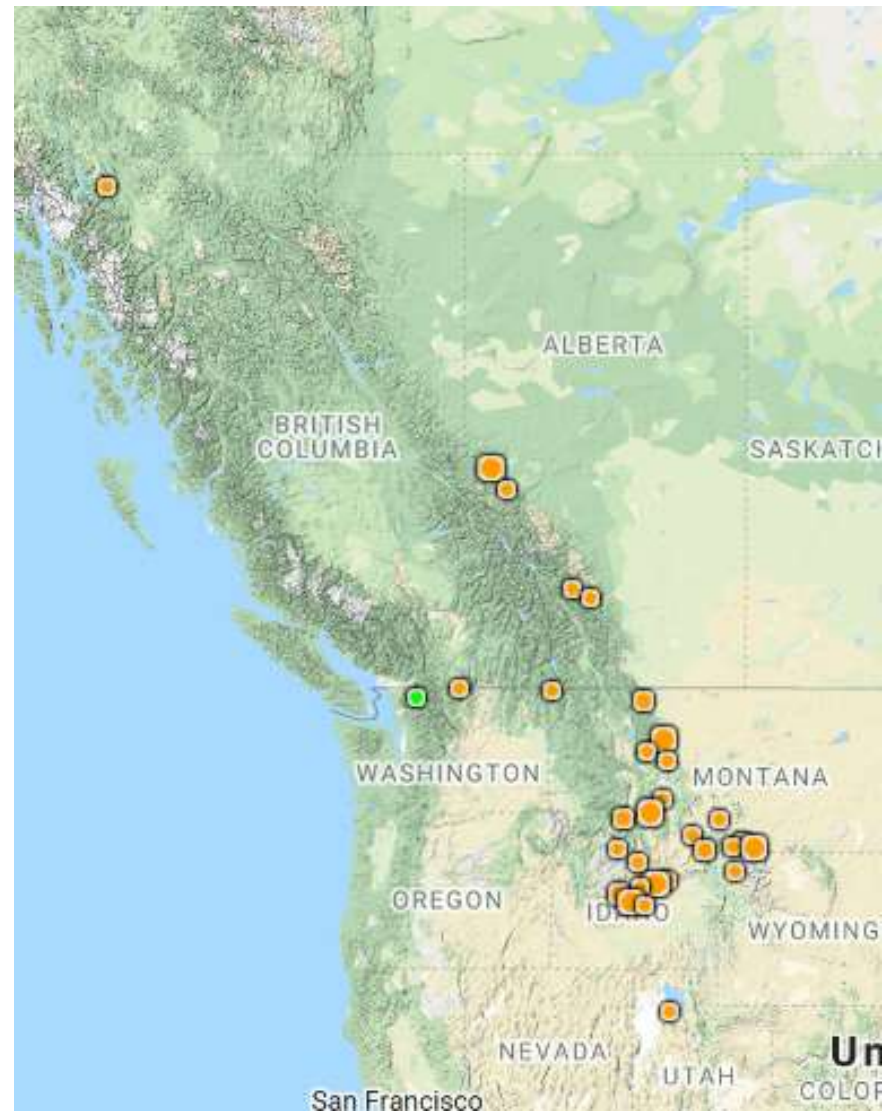
Micropus californicus var. *californicus*
(Asteraceae); cottontop, Q-tips



Photos by Robert L. Carr

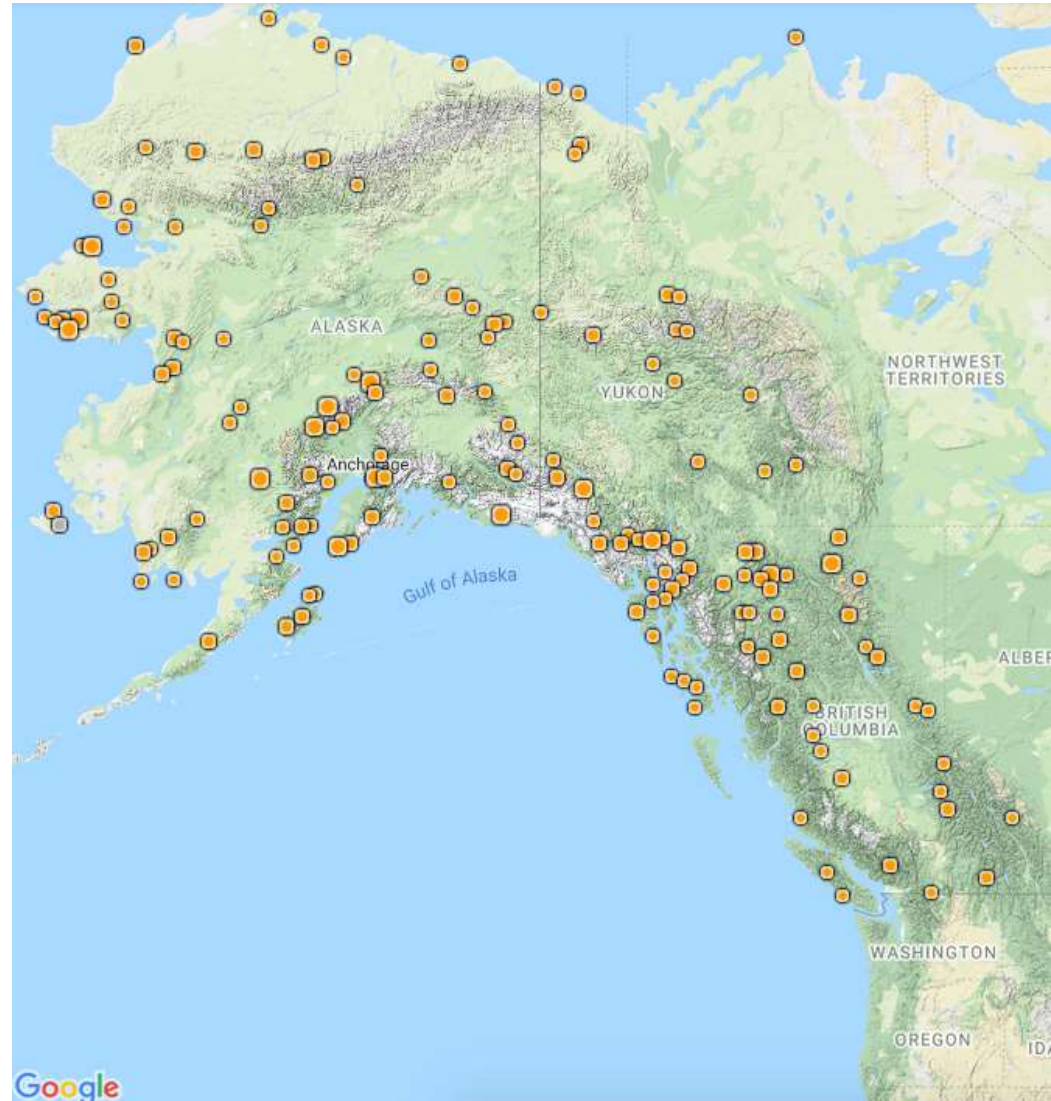


Addition of 2 Alpine *Taraxacum* Species to WA Flora



Taraxacum alaskanum

North Cascades, Skagit County



Lomatium sp.
Yakima County

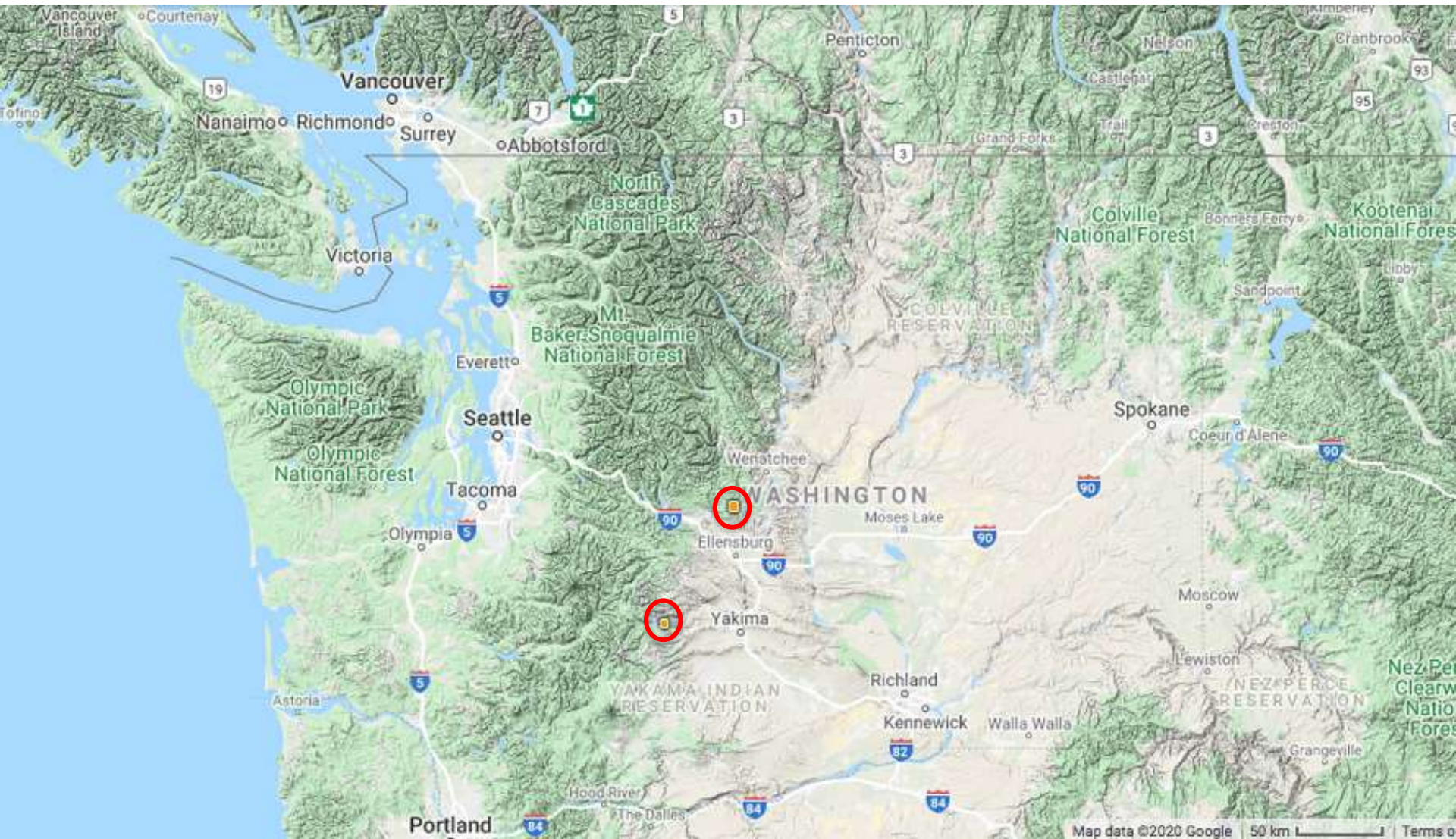




Boechea cascadiensis

Apomictic hybrid of *B. microphylla* and *B. paupercula*





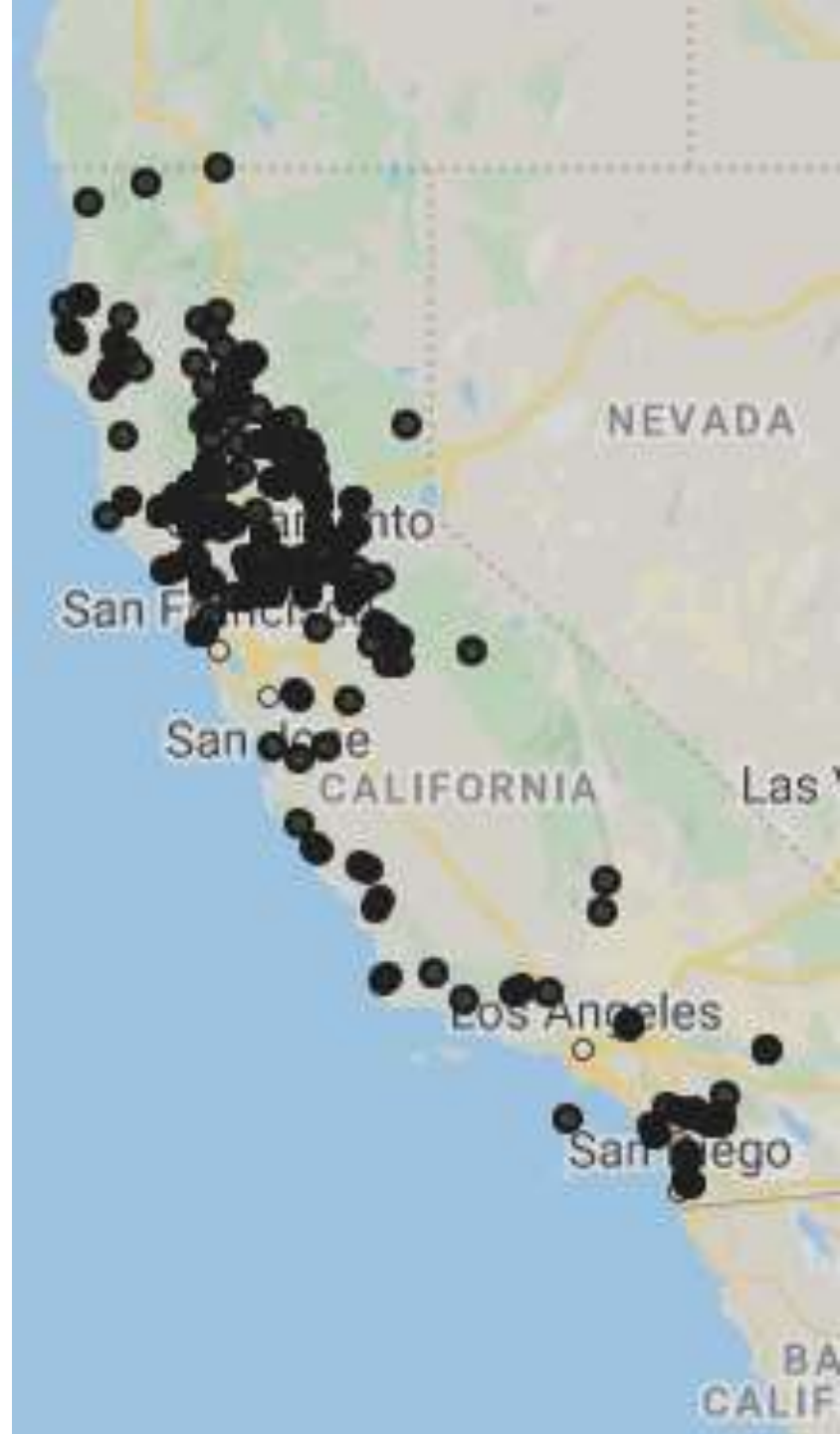
Opuntia phaeacantha (Introduced)

Klickitat Co, WA



Polypogon maritimus (Poaceae)
Mediterranean rabbitsfoot grass





Notable Nomenclatural Changes

- *Rubus parviflorus* → *Rubus nutkanus*



Notable Nomenclatural Changes

- *Rubus parviflorus* [?] ← *Rubus nutkanus*



Rosa nutkana Story Continues

- Proposal submitted by FNA *Rubus* author to conserve the name *R. parviflorus*

google.com, accessed 24 Jun 2019), 1380 since the year 2000. The next available name to use in place of *R. parviflorus* Nutt. is *R. nutkanus* Moc. ex Ser. (in Candolle, Prodr. 2: 566. 1825). So far, *R. nutkanus* has been taken up as the accepted name for this species only by Giblin & al. (Fl. Pacif. N.W.: 212. 2018).

Acknowledgements

- Cody Hinchliff, Joey Ellis
- Nygren Family Endowment for the Herbarium
- Friends of the Herbarium