

Up-and-Coming Aquatic **Invasive Plants** in the Upper Midwest

UMISC 2012



Paul Skawinski

Regional AIS Education Specialist

Golden Sands Resource Conservation & Development Council, Inc. (RC&D)

Flowering rush (*Butomus umbellatus*)



- Grows emergent in several feet of water.
- Can grow submerged in 10ft+
- Spreads by rhizomes and bulbils



Photos: Paul Skawinski

Flowering rush (*Butomus umbellatus*)

- Grows emergent in several feet of water.
- Can grow submerged in 10ft+
- Spreads by rhizomes and bulbils



Photos: Paul Skawinski



Flowering rush (*Butomus umbellatus*)



Flowering rush (*Butomus umbellatus*)



Flowering rush (*Butomus umbellatus*)



Flowering rush (*Butomus umbellatus*)



Flowering rush (*Butomus umbellatus*)



Flowering rush (*Butomus umbellatus*)



Stem cross-section

Parrot Feather (*Myriophyllum aquaticum*)

- Native to Amazon River region of South America
- Has submergent and emergent leaves
- Grows best in shallow, nutrient-rich waters
- Can survive on wet banks for several weeks



Parrot feather or other milfoil?

Parrot feather (*Myriophyllum aquaticum*)



Eurasian watermilfoil
M. spicatum

Northern watermilfoil
M. sibiricum



Parrot feather or other milfoil?

Parrot feather (*Myriophyllum aquaticum*)



Eurasian watermilfoil
M. spicatum



Northern watermilfoil
M. sibiricum



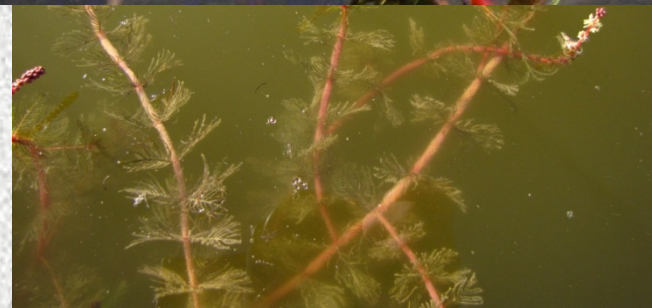
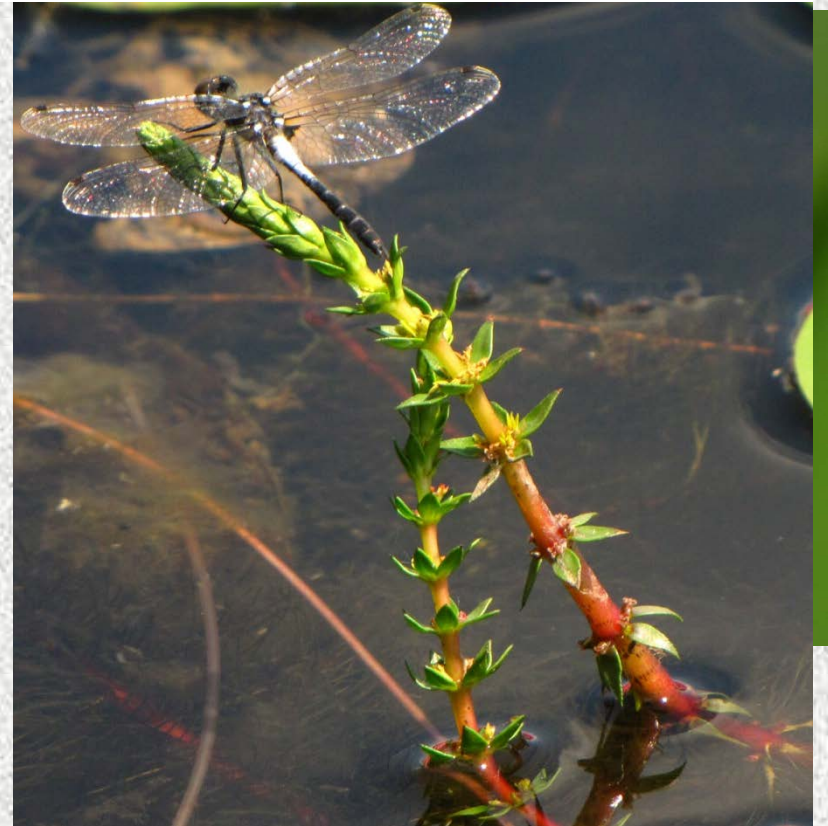
Parrot feather or other milfoil?

Parrot feather (*Myriophyllum aquaticum*)



Various-leaved watermilfoil
(*Myriophyllum heterophyllum*)

ilfoil



Brazilian waterweed (*Egeria densa*)

- Top-selling “oxygenator” plant for water gardens and aquaria.
- May be sold as:
- Anacharis,
- Elodea densa,
- Giant Elodea,
- Brazilian Elodea
- *Elodea canadensis*!

Home : [Aquarium Livestock](#) : [Live Aquarium Plants](#) : [Bunched Plants](#) : [Egeria densa "Anacharis"](#)



Egeria densa "Anacharis"
That Fish Place

1-2 : \$1.99 ea
3-5 : \$1.89 ea
6-11 : \$1.79 ea
12 or more : \$1.69 ea

Quantity:

[ADD TO CART](#)

[ADD TO WISHLIST](#)

Item Number: GO:208920
Manufacturer Part #: F6600360011
Availability: **Out of Stock**

[Print Page](#) [Tell A Friend](#)

[Overview](#) [Specifications](#)

Egeria densa "Anacharis"

Anacharis is a terrific oxygenator and food source in both ponds and aquariums. Its long, green stems are thick with tender leaves and grow not from a root base but from the tips. The strands may reach lengths of 6 feet or more if not pruned. This is an easy plant to care for and is great for beginners. Anacharis will not be shipped to ME, AL, WA, SC, OR, CT, MA, VT, NH.

Brazilian waterweed (*Egeria densa*)

- Lance-shaped leaves in whorls of 4-8
- Long stems, bushier near the top
- Serrated leaves, with spines on margins
- No spines on midrib, no tubers produced

(Hydrilla)



Photos: Paul Skawinski



Brazilian waterweed, *Hydrilla* or *Elodea* spp.?



Brazilian waterweed (*Egeria densa*)



Common waterweed (*Elodea canadensis*)

Elodea nuttallii



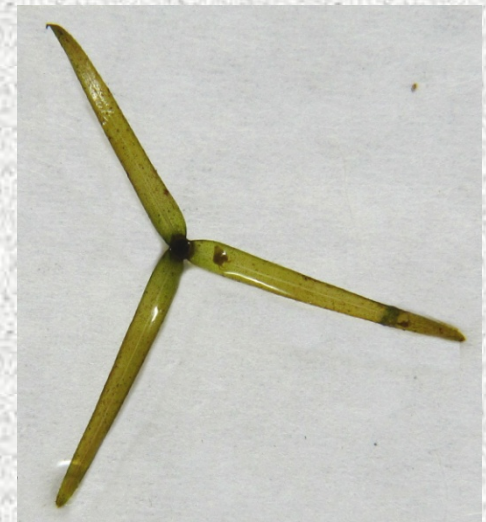
Brazilian waterweed, *Hydrilla* or *Elodea* spp.?



Brazilian waterweed (*Egeria densa*)



Elodea canadensis
Elodea nuttallii



Common waterweed
(*Elodea canadensis*)

Brazilian waterweed
(*Egeria densa*)



Hydrilla verticillata



Hydrilla verticillata



Fanwort (*Cabomba caroliniana*)

- Opposite leaves, finely dissected
- Fairly short internodes, usually concealed by dense leaves
- Resembles water marigold
(*Bidens/Megalodonta beckii*)

Fanwort or Water Marigold?

Fanwort (*Cabomba caroliniana*)



Photos: Paul Skawinski

Water marigold (*Megalodonta [Bidens] beckii*)



Yellow Floating Heart (*Nymphoides peltata*)

- Ornamental from Eurasia
- Spreads by fragments and seeds
- Seeds are hairy, which help seeds float and stick to feathers
- Four other *Nymphoides* species in U.S.. None found in Upper Midwest.
- Tolerant of herbicides at max concentration

Yellow Floating Heart (*Nymphoides peltata*)



Yellow floating heart or Nuphar spp.?

Yellow floating heart (*Nymphoides peltata*)



Bullhead pond lily (*N. variegata*)



N. variegata



N. advena



N. microphylla



Photos: Paul Skawinski

Brittle Naiad (*Najas minor*)

- Spreads by fragments (leaf axils)
- Stems brittle, very branched, bushy
- Leaves ~1" long, tiny spines on margins
- Grows to 12ft deep



Photos: Paul Skawinski



Brittle naiad or other naiad (*Najas* spp.)?

Brittle naiad (*Najas minor*)
NR40-prohibited



Spiny naiad (*Najas marina*)
Introduced



Slender naiad (*N. flexilis*)

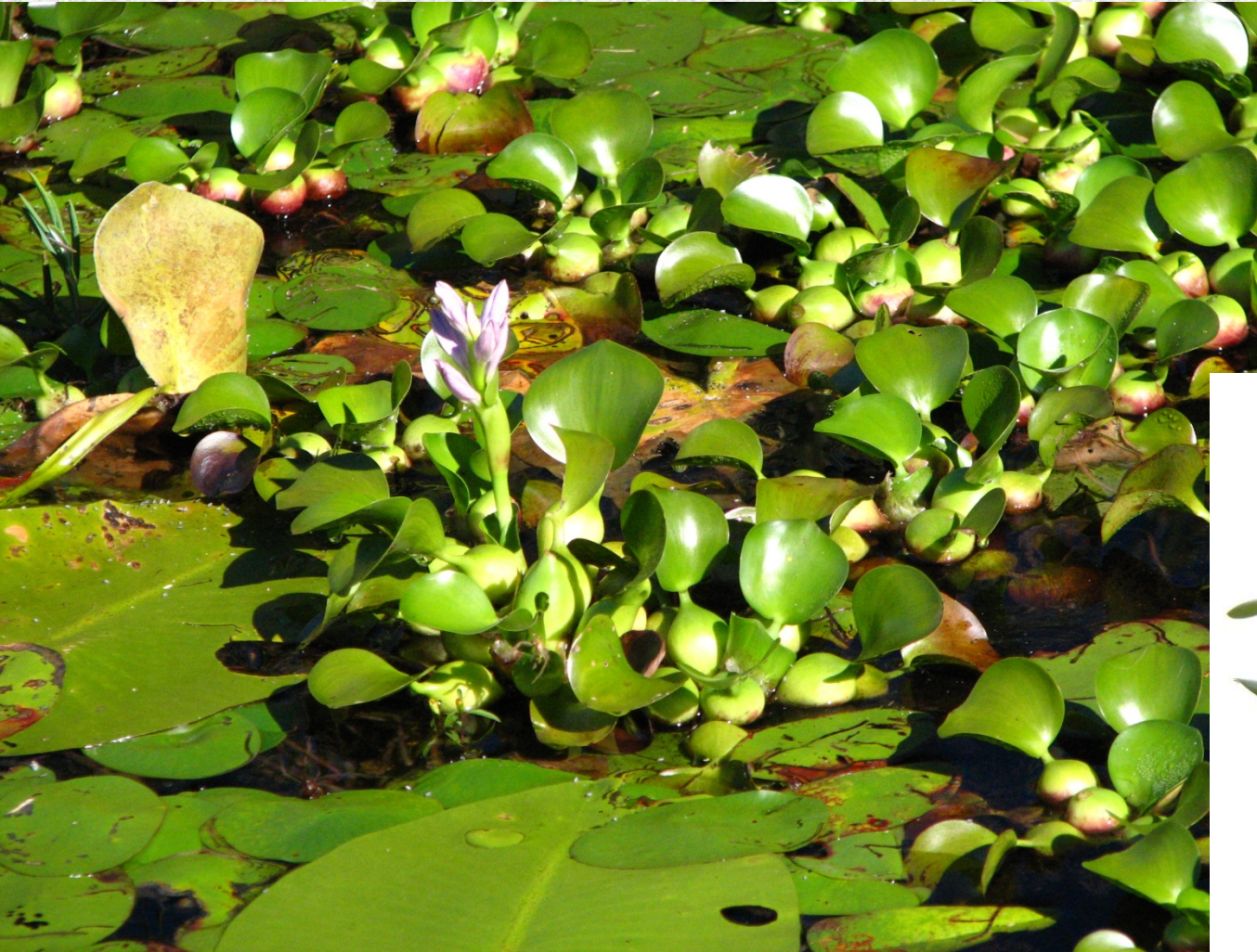


Water hyacinth (*Eichhornia crassipes*)

- Native to South America
- Brought to New Orleans Cotton Exposition in 1884 and distributed
- May be sold as “blue shellflower”



Water hyacinth (*Eichhornia crassipes*)



Water lettuce (*Pistia stratiotes*)

- Soft and velvety
- Very lightweight, floats high on surface
- Spreads by stolons
- Fibrous roots dangle below



Water lettuce (*Pistia stratiotes*)

