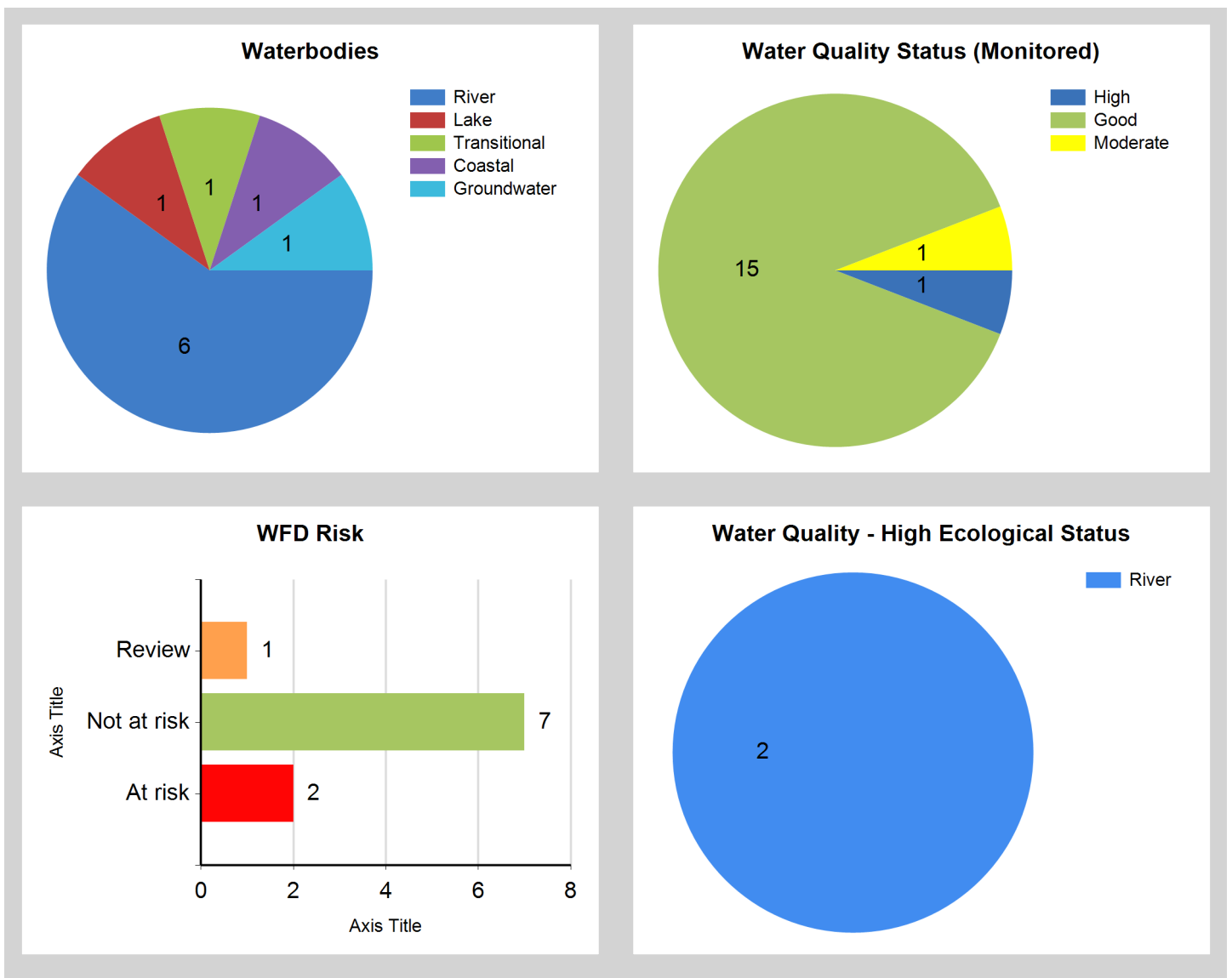




## Assessment Purpose

This assessment has been produced as part of the national characterisation programme undertaken for the second cycle of Water Framework Directive river basin management planning. It has been led by the EPA, with input from Local Authorities and other public bodies, and with support from RPS consultants.

The characterisation assessments are automatically generated from the information stored in the WFD Application. They are based on information available to the end of 2015 but may be subject to change until the final 2018-21 river basin management plan is published. Users should ensure that they have the most up to date information by downloading the latest assessment before use.

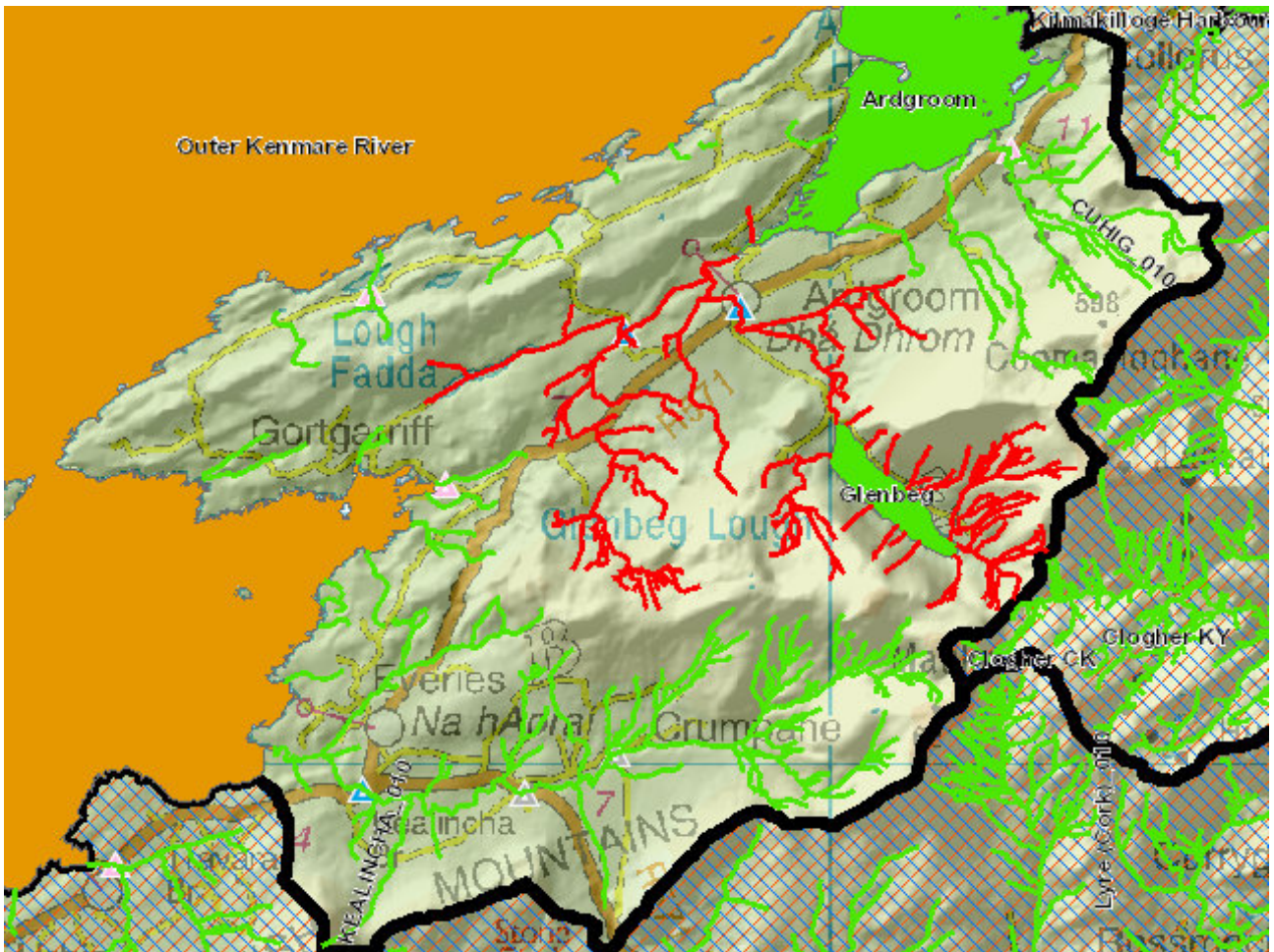


## Evaluation of Priority Subcatchment Issues

Of the seven water bodies in this subcatchment, five are NOT AT RISK: Glenbeg Lake, Ballycrovane\_010, Cuhig\_010, Kealincha\_010 and Tranacapoul.

Lough Fadda Stream\_010 and Ownagappul\_010 are both at Good ecological status (2010-2015), but are considered AT RISK as they are within the Ownagappul Freshwater Pearl Mussel Priority Catchment, and therefore have High Status Objectives which are not being met. Significant pressures are likely to include peat bogs, forestry, and hydromorphology; however there is no nutrient information available. Investigative assessments are required to determine what is preventing the water bodies from reaching High status.

## Map Subcatchment Risk Map

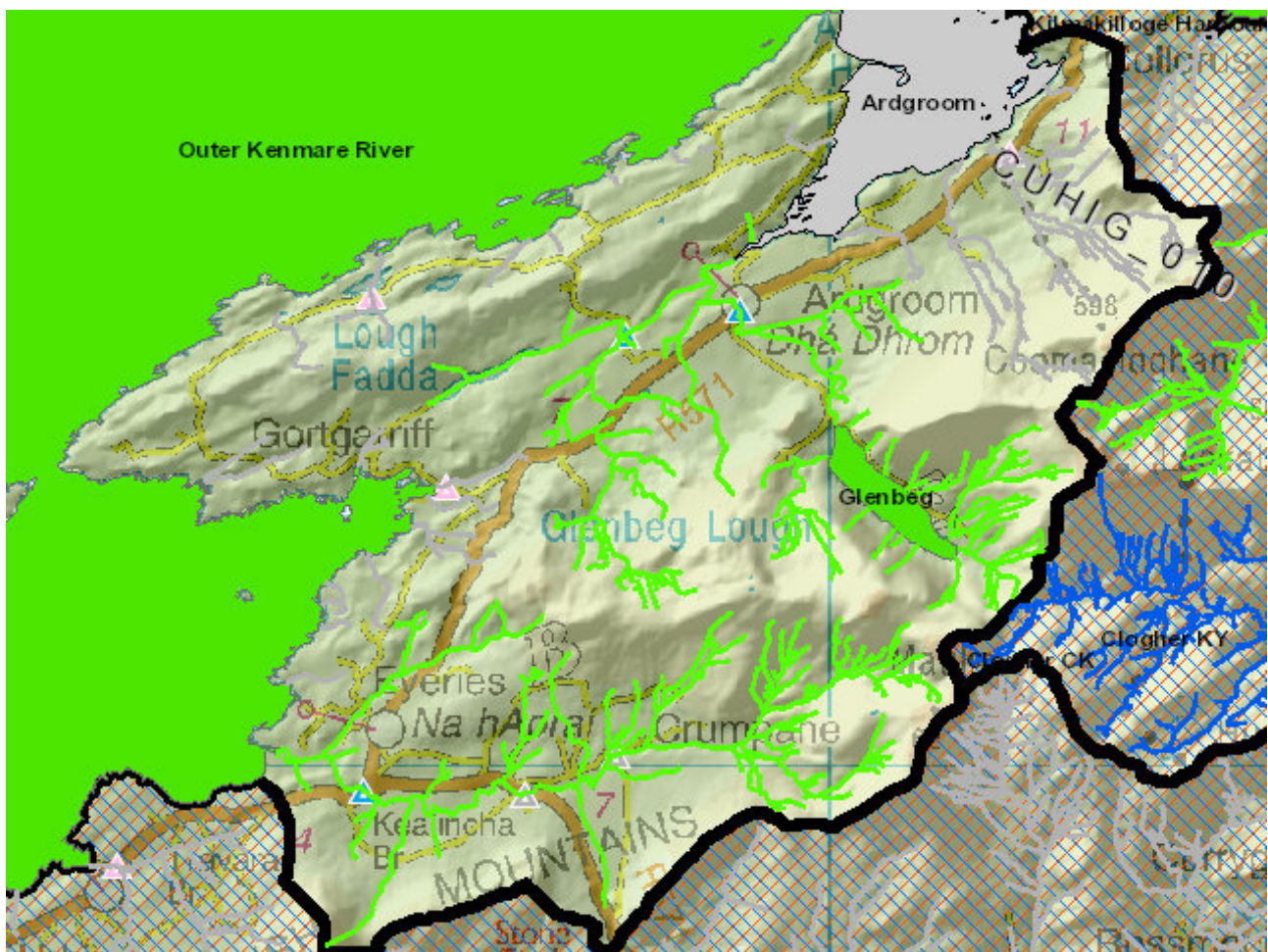


## River And Lake Waterbodies: WFD Risk

The following river and lake waterbodies are in the subcatchment.

Code	Name	Type	WFD Risk	Significant Pressure
IE_SW_21L030100	LOUGH FADDA STREAM_010	River	At risk	Yes
IE_SW_21O090200	OWNAGAPPUL_010	River	At risk	Yes
IE_SW_21_444	Glenbeg	Lake	Not at risk	Yes
IE_SW_21B470930	BALLYCROVANE_010	River	Not at risk	Yes
IE_SW_21C960890	CUHIG_010	River	Not at risk	Yes
IE_SW_21T020600	TRANACAPOUL_010	River	Not at risk	Yes

## Map Subcatchment Water Quality Status Map



## River And Lake Waterbodies: Water Quality Status

The water quality status of river and lake waterbodies in the subcatchment is as follows.

Code	Name	Type	2007-09	2010-12	2010-15
IE_SW_21B470930	BALLYCROVANE_010	River	Unassigned	Unassigned	Unassigned
IE_SW_21C960890	CUHIG_010	River	Unassigned	Unassigned	Unassigned
IE_SW_21_444	Glenbeg	Lake	Good	Moderate	Good
IE_SW_21K020300	KEALINCHA_010	River	Good	Good	Good
IE_SW_21L030100	LOUGH FADDA STREAM_010	River	Good	Good	Good
IE_SW_21O090200	OWNAGAPPUL_010	River	Good	Good	Good
IE_SW_21T020600	TRANACAPOUL_010	River	Unassigned	Unassigned	Unassigned

## Potentially Dependent Transitional and Coastal Waterbodies

The Transitional and Coastal waterbodies listed below intersect spatially with river and lake waterbodies in the subcatchment ...

Code	Name	Type	Local Authority	WFD Risk
IE_SW_190_0000	Outer Kenmare River	Coastal	Kerry County Council	Review
IE_SW_190_0100	Ardgroom	Transitional	Cork County Council	Not at risk

## Potentially Dependent Groundwater Waterbodies

The groundwaters listed below intersect spatially with river and lake waterbodies in the subcatchment ...

Code	Name	Type	Local Authority	WFD Risk
IE_SW_G_019	Beara Sneem	Groundwater	Kerry County Council	Not at risk

## Protected Areas intersecting River and Lake Waterbodies

The Protected Areas listed below intersect spatially with river and lake waterbodies in the subcatchment ...

Code	Name	Type	Waterbody Name	Association Type
IE0002158	Kenmare River SAC	SAC	BALLYCROVANE_010	Overlapping / partly within Protected Area
IE0002158	Kenmare River SAC	SAC	CUHIG_010	Overlapping / partly within Protected Area
IE0002158	Kenmare River SAC	SAC	KEALINCHA_010	Overlapping / partly within Protected Area
IE0002158	Kenmare River SAC	SAC	LOUGH FADDA STREAM_010	Overlapping / partly within Protected Area
IE0002158	Kenmare River SAC	SAC	TRANACAPOUL_010	Overlapping / partly within Protected Area
IEPA1_SW_21_444	Glenbeg	Drinking Water	Glenbeg	Within Protected Area

## Pressures

Below is a list of all significant pressures identified in the subcatchment.

Code	Name	WFD Risk	Pressure Category	Pressure Sub Category
IE_SW_21L030100	LOUGH FADDA STREAM_010	At risk	Extractive Industry	Peat
IE_SW_21L030100	LOUGH FADDA STREAM_010	At risk	Forestry	Forestry
IE_SW_21O090200	OWNAGAPPUL_010	At risk	Forestry	Forestry
IE_SW_21O090200	OWNAGAPPUL_010	At risk	Extractive Industry	Peat
IE_SW_190_0000	Outer Kenmare River	Review	Anthropogenic Pressures	Unknown

## Further Characterisation Actions

The following further characterisation actions have been identified. These are necessary to help understand more fully issues in the subcatchment and their likely cause.

Code	Name	Action	Responsible Organisation
IE_SW_21L030100	LOUGH FADDA STREAM_010	IA1 Provision of Information	Environmental Protection Agency
IE_SW_21O090200	OWNAGAPPUL_010	IA8 High status RWB pressures	Cork County Council
IE_SW_21O090200	OWNAGAPPUL_010	IA1 Provision of Information	Cork County Council
IE_SW_21L030100	LOUGH FADDA STREAM_010	IA8 High status RWB pressures	Cork County Council