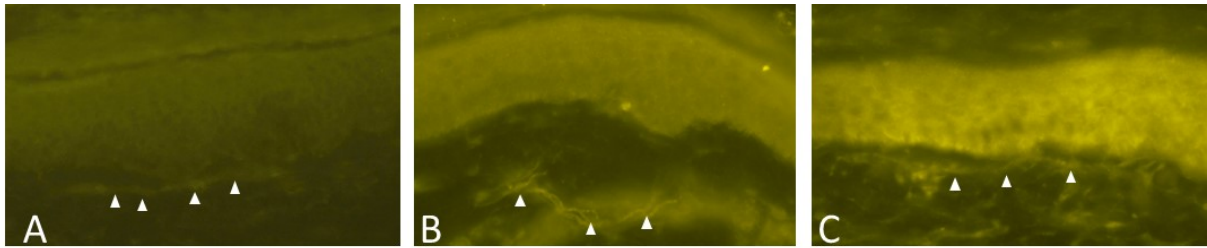
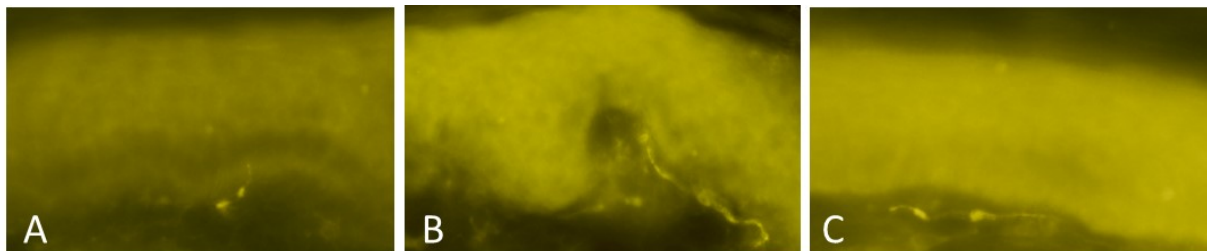


## Supplemental figures



**Supplemental figure 1: Comparable pattern of TRPV1-immunoreactive fibers (arrowheads) in the subepidermal region in (A) the patient with hypalgesia, (B) a healthy control, (C) a patient with painful small fiber neuropathy.**



**Supplemental figure 2: Similar pattern of CGRP-immunoreactive fibers in the subepidermal region in (A) the patient with hypalgesia, (B) a healthy control, (C) a patient with painful small fiber neuropathy.**