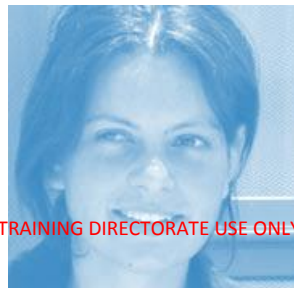




ACT
Government

Education and Training

ACT PUBLIC SCHOOL ENROLMENT PROJECTIONS 2013 to 2017 FOR ETD USE ONLY



Executive Summary

The ACT Public School Enrolment Projections 2013-2017 report provides the annual update of student enrolment projections for all ACT public schools for the period 2013 to 2017.

This document is used as a broad guide for internal planning purposes in the Education and Training Directorate (the Directorate).

In line with population growth in the ACT, public school projections indicate that total enrolments are expected to grow at an average of nearly two percent per annum during this period. Areas of growth are Gungahlin in Canberra's north and the new region of Molonglo in the south-west.

SUMMARY OF KEY TRENDS BY SECTOR

There are two sources of growth in the ACT public school system: Greenfield development and urban intensification. Two new schools in Gungahlin, Franklin Early Childhood School and Neville Bonner Primary School opened in 2013 and will address enrolment pressure in the area. The strong actual and forecast population growth in Gungahlin will require the development of new education facilities in the suburbs of Moncrieff and Kenny.

Development in Molonglo will initially lead to pressure on schools in Curtin, Yarralumla and Duffy until Coombs Primary School opens in 2016. In established areas, enrolments will need to be managed due to increased pressure from new urban development. Notably overall numbers of enrolments in ACT schools from residents of New South Wales are expected to increase in line with the developments which are planned in Googong and Tralee.

Table 1 provides an overview of projected public school student enrolments from 2013 to 2017. The growth in student numbers over this period is in line with ACT population growth and is reflected in all age groups.

Table 1: Enrolment Projections 2013 to 2017 for Kindergarten to Year Twelve by Year

School Type	2012*	2013**	2014	2015	2016	2017
Preschool	4159	4264	4513	4503	4532	4587
K-12	35848	36229	38357	39386	40103	40745
Total	40074	40409	42870	43889	44635	45332

(1) *Data from the February School Census 2012. With minor differences due to including students with special needs and a small number of students who attend more than one school.

(2) ** 2013 February School Census draft figures.

School capacity

The capacity figures used in this document are for mainstream enrolments only. It is assumed that colleges and high schools accommodate an average of 19 students per teaching space and primary schools accommodate up to an average of 25 students per teaching space (with additional space requirements for special classes). School capacities are managed by the Directorate's Finance and Corporate Support Branch.

Analysis of the capacity of individual schools takes into consideration a range of design factors and specific educational needs. School capacities are periodically reviewed by the Finance and Corporate Support Branch to ensure they reflect changes in building or design arrangements and the operation of special programs in schools, e.g. bi-lingual immersion provision. The figures indicate current capacities and additional accommodation available in transportable classrooms.

Enrolment pressure is created by a number of variables such as new developments within the school catchment, overall population growth, urban regeneration, as well as popularity of the school. Possible solutions to ease enrolment pressure in a school are:

- reducing the proportion of out-of-area enrolments at one or more schools in the area
- providing a temporary or permanent capacity increase (e.g. transportable classrooms)

- adjusting a school's Priority Placement Area (PPA) boundary or
- planning for a new school.

Table 10 shows the approved mainstream capacity of each public school (excluding preschools) with reference to projected enrolments by school.

Methodology

School enrolment projections are based on recent enrolment and demographic trends. These enrolment forecasts incorporate the latest information on school enrolment rates, birth rates and other factors. At the whole of ACT level, the population projections incorporate the Australian Bureau of Statistics Estimated Resident Population figures.

Key data sources used for the projections are:

- ACT public school census data conducted in February each year
- data from the ACT Registrar of Births, Deaths and Marriages on the number of births by suburb
- recent grade to grade retention rates
- estimates of enrolments from any proposed new residential development
- any known Government or Directorate policy or other factors, such as capacity limitations, which influence enrolment levels
- the *ACT Population Projections for Suburbs and Districts 2009 to 2059*
- *ACT Population Projections for Suburbs and Districts: 2001-2021, CMTD (2011)*
- ACT Economic Development Directorate – August 2012 release of the dwelling occupancies forecasts
- Input from school principals through consultation on the one year enrolment projections.

Table 2: Summary of ACT Estimated Resident Population 0-19 year olds

Age	2012	2013	2014	2015	2016	2017
0-4	24650	25200	25700	26050	26400	26650
5-9	22250	22850	23400	24050	24550	25000
10-14	20650	20600	20750	21000	21550	22250
15-19	24550	24650	24550	24300	24200	23850
Total	92100	93300	94400	95400	96700	97750

Specialist Schools / Special Classes in Mainstream Schools

In general, the ratio of public school students with special needs has remained stable between 4.6 – 4.8%. These students are included in the totals for the schools.

Table 3.1: Summary of Special Needs Enrolment Trends

Proportion of special needs students compared to each sector					
	2008	2009	2010	2011	2012
Public Schools	4.6%	4.7%	4.8%	4.7%	4.7%
Independent Schools	1.5%	1.2%	1.6%	1.6%	1.8%
Catholic Systemic schools	1.8%	1.9%	2.0%	2.1%	2.3%
All non-government	1.7%	1.6%	1.8%	1.8%	2.0%
All schools	3.4%	3.4%	3.6%	3.5%	3.6%
Proportion of special needs students compared to the overall school population					
	2008	2009	2010	2011	2012
Public Schools	2.8%	2.8%	2.9%	2.8%	2.8%
Non-government schools	0.7%	0.6%	0.7%	0.8%	0.8%
All schools	3.4%	3.4%	3.6%	3.5%	3.6%

Table 3.2: Special Needs Enrolment Projections in Public Schools

	2012	2013	2014	2015	2016	2017
Special Needs students	1890	2015	2014	2062	2098	2131
Total Public School Population	40074	41743	42870	43889	44635	45332

(1) Includes all students flagged as special needs, including those students not formally assessed at the time of the census. 2012 figures are from the February School Census 2012

Mainstream schools offer a variety of special classes to students with a disability. The classes include a range of units each having a specific maximum size. Units include:

- learning support centre (LSC)
- learning support unit (LSU)
- learning support units autism (LSUA)
- support class language (SCL)
- hearing impaired unit (HIU)
- vision support (ITVI).

Cranleigh and Malkara Schools are specialist primary schools for students with a moderate to profound intellectual disability, or Autism Spectrum Disorder who require intensive levels of support. The Woden School is a specialist setting for students in years 7 to 12 students with an intellectual disability or Autism Spectrum Disorder. Black Mountain School offers programs for students in years 7 to 12 with a moderate to profound intellectual disability or Autism Spectrum Disorder requiring intensive levels of support. Turner School operates as a primary school with a predominant enrolment of mainstream students and a substantial enrolment of students with disabilities. Students who access the Disability Education program at Turner meet the ACT criteria for intellectual disability or Autism Spectrum Disorder.

ENROLMENT PROJECTION HIGHLIGHTS BY SCHOOL NETWORK AND DISTRICT

Table 4: Kindergarten to Year 12 Projections by Network 2013 – 2017 and Total Capacity

Network	2012*	2013	2014	2015	2016	2017	Capacity
Belconnen	8827	9203	9415	9784	10148	10415	13844
North/Gungahlin	9916	10895	11542	12218	12439	12784	13388
South/Weston	9906	10232	10476	10570	10857	11022	12069
Tuggeranong	7199	7059	6924	6814	6659	6524	12378
Total	35848	37389	38357	39386	40103	40745	51679

(1) *Data from the February School Census 2012. With minor differences due to including students with special needs and a small number of students who attend more than one school.

NETWORK MODEL

ACT public schools are administratively grouped into four school networks. The following is a description of the trends evident within each the school networks, with reference to tables 6-9.

NORTH/GUNGAHLIN SCHOOLS NETWORK

Enrolments for the North/Gungahlin network are projected to grow at the fastest rate in the ACT over the five years of the projection period. Growth can be attributed to the continued development of suburbs such as Casey, Crace, Franklin, Bonner and Forde, in addition to inner northern urban infill development on the edge of Watson. Growth patterns are also affected by urban infill in Lyneham, Braddon and the city centre. Long term growth is expected based on demand driven by continuing and future developments. Development plans

for the additional suburbs of Kenny, Moncrieff and Taylor in northeast Gungahlin will see increased demand for school enrolment places in the North/Gungahlin network. Within the 2013-2017 projection period, there is expected, to be a high demand for high school places in line with the network's demographic profile, however there will continue to be growth in the primary sector. The forecasted demand pressures identified within the public high school sector may be relieved by the expected expansion in the non-government school sector. There is expected to be pressure on schools from growth in Palmerston, Crace, Amaroo and Harrison.

BELCONNEN SCHOOL NETWORK

The Belconnen network is anticipated to be the second fastest growing network over the period of these projections, with addition demand primarily driven by new development in West Belconnen and Lawson. There is expected to be enrolment pressure for Aranda Primary school from infill in Belconnen, Bruce and the Lawson development. The comparative growth in demand for the College sector may reflect the higher retention rates of students due to the *Education, Participation (Enrolment and Attendance)* legislation. In addition to the new housing developments in Macgregor and Lawson, a younger family demographic is likely to regenerate the Belconnen area and contribute to an overall predicted growth of 629 enrolments into the primary school sector over the projection period. It is anticipated that the overall demand for preschool places will also increase due to strong birth patterns in Belconnen.

SOUTH/WESTON SCHOOLS NETWORK

Enrolments in the South/Weston schools network will increase steadily, in-line with relatively stable estimates of population growth over the period of the enrolment projections. Within this network, the development of the new suburbs of North Weston, Wright and Coombs will contribute to the third highest level of growth in the ACT. The impact of the Molonglo development will initially increase pressure on nearby schools that will be mitigated with the opening of Coombs Primary School in 2016. In line with the demographic profile of the new Molonglo suburbs, demand will trend toward primary school enrolments until 2016 with the South/Weston schools network experiencing greater high school demand during the later years of the projection cycle. Apartment developments in the inner south suburbs of Barton, Kingston and Deakin and the regeneration of the Narrabundah area will continue to create demand at Forrest Primary School, Red Hill Primary School and Narrabundah Early Childhood School. Regeneration and infill developments in Phillip and Lyons have contributed to Garran Primary School experiencing high growth in demand. Pressure on Canberra College will continue to increase until around 2020 when a new college is planned to be built in the Molonglo Group Centre.

TUGGERANONG SCHOOLS NETWORK

The Directorate's enrolment projection models predict relatively stable school age population across the Tuggeranong network, trending toward a small decrease after peaking in 2013-14 in line with the *ACT Population Projections for Suburbs and Districts: 2001-2021*, CMTD (2011). Overall, enrolment projections for the college and high school sectors continue to experience a decline, consistent with demographic trends for this age group. Planned development in Greenway will contribute to demand and growth at Namadgi School. The stabilisation of birth rates in Tuggeranong has seen small increases in southern Tuggeranong early childhood and primary schools. Enrolment projections for individual schools increased or decreased with little discernible correlation to the geographic or demographic characteristics corresponding to their Priority Placement Areas.

Table 6: Enrolment Projections for Preschool - Belconnen Network

School Name	2012	2013	2014	2015	2016	2017
Aranda Primary School	72	89	99	108	80	81
Charnwood-Dunlop School	84	96	95	95	80	80
Cranleigh School	32	36	37	36	36	36
Evatt Primary School	43	53	46	45	42	41
Florey Primary School	89	75	77	91	100	98
Fraser Primary School	75	70	74	74	65	65
Giralang Primary School	43	25	34	33	35	34
Hawker Primary School	41	52	60	51	43	43
Jervis Bay Primary School	24	22	23	23	23	23
Kaleen Primary School	91	89	109	82	88	86
Kingsford Smith School	71	72	69	76	81	78
Latham Primary School	48	50	39	39	41	41
Macgregor Primary School	79	84	88	88	81	81
Macquarie Primary School	44	47	52	54	53	53
Maribyrnong Primary School	38	45	53	43	45	52
Miles Franklin Primary School	83	80	80	87	75	75
Mount Rogers Primary School	82	98	97	102	86	86
Southern Cross Early Childhood School	81	66	79	79	72	72
Weetangera Primary School	64	51	82	60	64	64
Belconnen Total	1184	1200	1293	1266	1190	1189

Table 7: Enrolment Projections for Preschool - North/Gungahlin Network

School Name	2012	2013	2014	2015	2016	2017
Ainslie School	59	41	55	61	91	91
Amaroo School	166	130	163	160	227	246
Bonner Primary School	0	75	88	88	88	88
Campbell Primary School	59	70	59	70	52	53
Franklin Primary School	0	65	77	76	74	79
Gold Creek School	137	119	123	144	136	139
Harrison School	149	150	182	180	164	167
Lyneham Primary School	55	61	52	59	66	69
Majura Primary School	81	90	87	100	81	81
Ngunnawal Primary School	97	88	93	111	115	115
North Ainslie Primary School	57	60	62	60	62	62
O'Connor Cooperative School	25	25	21	23	24	24
Palmerston District Primary School	84	80	78	89	108	109
Turner School	84	95	80	84	108	110
North/Gungahlin Total	1053	1149	1220	1305	1396	1433

Table 8: Enrolment Projections for Preschool - South/Weston

School Name	2012	2013	2014	2015	2016	2017
Arawang Primary School	106	112	112	129	100	100
Chapman Primary School	92	90	87	108	105	105
Curtin Primary School	61	79	62	82	70	93
Duffy Primary School	73	80	68	75	72	83
Farrer Primary School	46	50	61	50	45	45
Forrest Primary School	37	43	34	38	43	42
Garran Primary School	48	46	47	46	45	45
Hughes Primary School	34	40	45	28	38	38
Lyons Early Childhood School	61	54	53	42	62	64
Malkara School	35	37	38	37	37	37
Mawson Primary School	38	44	46	46	38	37
Narrabundah Early Childhood School	58	83	66	62	88	90
Red Hill Primary School	72	98	63	67	85	86
Torrens Primary School	87	76	83	75	95	93
Yarralumla Primary School	59	60	47	66	69	64
South/Weston Total	907	992	912	951	992	1022

Table 9: Enrolment Projections for Preschool - Tuggeranong

School Name	2012	2013	2014	2015	2016	2017
Bonython Primary School	62	52	59	52	64	65
Calwell Primary School	58	44	53	57	48	48
Caroline Chisholm School	43	36	35	40	41	39
Charles Conder Primary School	88	111	101	75	91	88
Fadden Primary School	43	48	52	40	44	44
Gilmore Primary School	27	39	37	31	32	31
Gordon Primary School	133	120	150	112	126	128
Gowrie Primary School	39	45	51	49	36	36
Isabella Plains Early Childhood School	79	78	79	79	66	64
Monash Primary School	86	95	105	87	86	86
Namadgi School	100	114	95	95	94	93
Richardson Primary School	49	43	49	48	43	42
Taylor Primary School	40	20	31	41	29	28
Theodore Primary School	43	47	52	42	46	44
Wanniassa Hills Primary School	74	74	90	81	62	61
Wanniassa School	45	47	49	52	46	46
Tuggeranong Total	1009	1013	1088	981	954	943

Table 6: Capacity Data and Enrolment Projections for Kindergarten to Year 12

Network	School Name	Capacity	Feb 2012	2013	2014	2015	2016	2017
Belconnen	Aranda Primary School	550	451	465	493	529	550	550
	Belconnen High School	1007	402	388	394	374	402	427
	Canberra High School	988	643	795	878	949	988	988
	Charnwood-Dunlop School	400	285	269	276	268	262	260
	Cranleigh School	0	53	60	66	72	81	88
	Evatt Primary School	425	294	311	316	326	327	328
	Florey Primary School	500	359	379	406	424	442	472
	Fraser Primary School	475	353	388	391	409	419	432
	Giralang Primary School	275	133	142	137	138	135	136
	Hawker College	969	567	507	509	532	568	595
	Hawker Primary School	300	279	291	290	300	300	300
	Jervis Bay Primary School	125	52	60	63	64	66	69
	Kaleen Primary School	500	472	500	500	500	500	500
	Kingsford Smith School	1123	880	870	828	864	890	923
	Latham Primary School	375	253	267	277	278	280	280
	Macgregor Primary School	400	358	400	400	400	400	400
	Macquarie Primary School	350	273	279	320	348	350	350
	Maribyrnong Primary School	400	206	221	249	279	331	371
	Melba Copland Secondary School	1710	757	723	655	623	630	622
	Miles Franklin Primary School	425	384	387	390	412	422	424
	Mount Rogers Primary School	325	280	319	325	325	325	325
	Southern Cross Early Childhood School	126	103	125	120	123	123	124
University of Canberra High School Kaleen	760	196	201	211	202	212	217	
University of Canberra Senior Secondary College Lake Ginninderra	836	437	481	543	639	750	836	
Weetangera Primary School	500	357	375	378	406	395	398	
Belconnen Total		13844	8827	9203	9415	9784	10148	10415
North/Gungahlin	Ainslie School	475	389	395	377	382	389	409
	Amaroo School	1578	1388	1523	1525	1578	1578	1578
	Black Mountain School	0	114	115	120	130	125	126
	Bonner Primary School	550		125	197	284	327	495
	Campbell High School	874	692	744	797	823	842	874
	Campbell Primary School	400	268	274	276	275	284	288
	Dickson College	1045	808	854	841	837	833	829
	Franklin Primary School	189		20	82	157	189	189
	Gold Creek School	1477	990	1087	1180	1271	1375	1433
	Gungahlin College	969	686	870	820	969	969	969
	Harrison School	1604	929	1126	1473	1604	1604	1604
	Lyneham High School	1064	1049	1064	1064	1064	1064	1064
	Lyneham Primary School	500	363	368	371	397	405	438
	Majura Primary School	575	509	542	575	575	575	575
	Ngunnawal Primary School	525	475	505	525	525	525	525
	North Ainslie Primary School	400	361	365	374	396	400	400
	O'Connor Cooperative School	63	56	59	63	62	60	59
Palmerston District Primary School	575	372	367	374	373	381	404	
Turner School	525	467	492	508	516	514	525	
North/Gungahlin Total		13388	9916	10895	11542	12218	12439	12784

Table 6: Capacity Data and Enrolment Projections for Kindergarten to Year 12 (Continued)

Network	School Name	Capacity	Feb 2012	2013	2014	2015	2016	2017
South/Weston	Alfred Deakin High School	1007	755	773	806	838	877	933
	Arawang Primary School	450	298	306	323	333	350	346
	Canberra College, The	969	969	969	969	969	969	969
	Chapman Primary School	575	489	501	531	536	562	570
	Coombs	0	0	0	0	0	171	215
	Curtin Primary School	500	404	448	500	500	500	500
	Duffy Primary School	325	294	324	325	325	325	325
	Farrer Primary School	400	278	273	273	288	293	293
	Forrest Primary School	550	453	483	511	526	540	550
	Garran Primary School	475	509	475	475	475	475	471
	Hughes Primary School	325	283	285	297	316	304	305
	Lyons Early Childhood School	126	64	96	101	105	94	99
	Malkara School	0	65	73	86	103	118	127
	Mawson Primary School	350	150	150	158	161	166	176
	Melrose High School	1064	754	748	680	651	662	639
	Narrabundah College	1102	946	1018	1087	1102	1102	1102
	Narrabundah Early Childhood School	84	61	84	84	84	84	84
	Red Hill Primary School	625	572	574	593	582	568	574
	Stromlo High School	1082	696	725	703	695	710	734
	Telopea Park School	1210	1163	1184	1210	1210	1210	1210
Torrens Primary School	525	401	419	428	450	451	470	
Woden School, The	0	104	104	102	92	87	83	
Yarralumla Primary School	325	198	220	234	229	239	247	
South/Weston Total		12069	9906	10232	10476	10570	10857	11022
Tuggeranong	Bonython Primary School	525	315	303	290	275	272	274
	Calwell High School	722	413	391	341	314	303	273
	Calwell Primary School	475	278	245	218	202	184	175
	Caroline Chisholm School	1281	476	470	471	472	463	471
	Charles Conder Primary School	525	305	289	273	277	251	240
	Erindale College	1007	608	581	560	549	540	529
	Fadden Primary School	400	289	296	319	335	341	344
	Gilmore Primary School	275	185	165	164	152	140	138
	Gordon Primary School	575	392	412	432	478	492	512
	Gowrie Primary School	375	191	192	209	219	228	223
	Isabella Plains Early Childhood School	168	92	113	115	119	119	111
	Lake Tuggeranong College	950	883	871	751	655	573	500
	Lanyon High School	836	531	498	459	417	411	403
	Monash Primary School	475	369	365	375	396	390	399
	Namadgi School	1166	498	533	629	629	629	629
	Richardson Primary School	275	168	177	185	197	204	210
	Taylor Primary School	350	171	166	147	128	123	113
	Theodore Primary School	400	263	256	262	275	275	278
	Wanniassa Hills Primary School	500	333	317	317	326	321	308
Wanniassa School	1098	439	419	407	399	400	394	
Tuggeranong Total		12378	7199	7059	6924	6814	6659	6524
Total		51679	35848	37389	38357	39386	40103	40745

(1) This table shows the enrolment projections for kindergarten to year twelve and does not include preschool. The capacity figures do not take into account preschool

(2) The enrolments projections include special students

(3) Special schools have no official capacity

(4) At this point of time there is no capacity listed for Coombs which is projected to open in 2016

(5) The Secondary Introductory English Centre (IEC) is located at Dickson College - it also has a college component

- (6) Connect10 programs are located at Dickson, Lake Tuggeranong and Lake Ginninderra Colleges
- (7) Year 6 students attending the Gold Creek School are accommodated at the senior site
- (8) Harrison School and Namadgi School high school component will not be fully open in 2013
- (9) Taylor Primary School is temporarily operating from the Namadgi School site
- (10) Narrabundah, Southern Cross, Lyons and Franklin Early Childhood Schools are from preschool to year two
- (11) Proposed development may increase demand for preschool in certain areas
- (12) Jervis Bay School projections may change depending on Navy and Australian Federal Police postings which impact enrolments from year to year

© ACT Government, 2013

This publication has been produced by the Education and Training Directorate (the Directorate).

Apart from any use permitted under the *Copyright Act 1968*, no part of this publication may be reproduced by any process without written permission. Requests should be made to the Directorate.

Comments and suggestions regarding this publication are welcomed and should be forwarded to the Directorate.

Published by:

Education and Training Directorate, ACT Government

GPO Box 158

Canberra City ACT 2601

Telephone: (02) 62059134

Website: <http://www.det.act.gov.au>