

# ST Eye: Mobile Monitoring App

## Key Features

- > **Bluetooth® Powered:** PDU power and environmental information via simple to use Bluetooth Android or Apple App.
- > **Easy Access:** Easy access to PDU's web gui from your mobile device via App and QR Code.
- > **Easy Install:** Plug and Play hardware module enables Bluetooth access.

## Benefits

- > **Instant Access:** No more struggling with locked cabinets or going into the hot aisle to access the PDUs information.
- > **Skip the Hot Aisle:** Don't break a sweat. You can now access your PDU from the cool aisle.
- > **Easy Install:** Plug and Play hardware module enables Bluetooth access.
- > **Affordable:** The application is a free Android or Apple download.

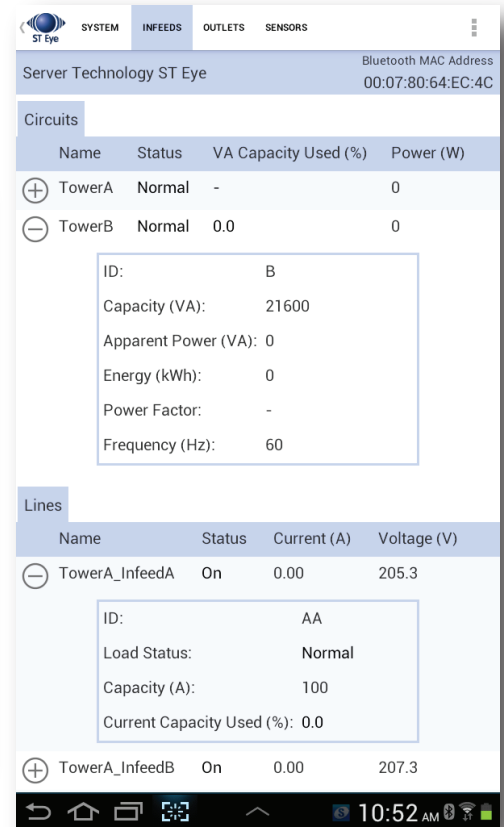
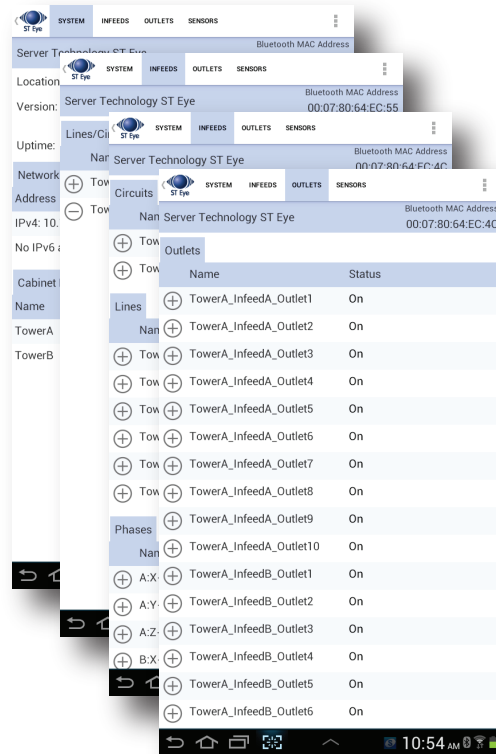
## The BIGGEST, easiest-to-read LCD screen on any PDU is the one in your hand



Introducing the latest innovation from Server Technology

Bring your mobile device to work. The ST Eye mobile application allows you to monitor critical power and environmental data directly from your Android or Apple app. It's the first Bluetooth® capable PDU technology on the market and the latest innovation from Server Technology.

- The quickest and easiest way to monitor your PDU at the cabinet level.
- A Free Android or Apple app allows simple remote access to the PDU's critical power and environmental information.
- Power, Environmental & System Information in the palm of your hand.
- No need to connect to a computer or physically connect to the PDU (either via the network or the serial port) to get information from the PDU when at the cabinet.



\*Screenshots of the ST Eye Mobile App

For more information visit: <http://information.servertech.com/steye>



# Sentry: ST Eye Solution

PRIMARY ETHERNET PIPELINE

PIPS Smart or Switched CDUs (POPS Optional)

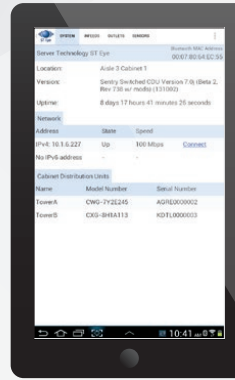


**Bluetooth® Module**

- > Plug & Play
- > Scan QR Code or;
- > Press button to discover Bluetooth® Device

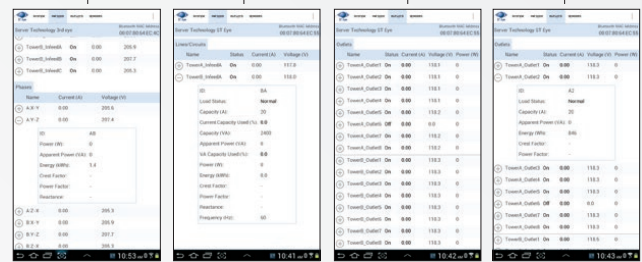


RF Transmission



**Portable Tablet**

- > Power Info
- > Environmental Info
- > System Info
- > CDU Web GUI via Login (Device on Wireless Network)



ST Eye Application UI



## Server Technology

**HEADQUARTERS - NORTH AMERICA**

Server Technology, Inc.  
1040 Sandhill Drive  
Reno, NV 89521  
United States  
1.775.284.2000 Tel  
1.775.284.2065 Fax  
sales@servertech.com  
www.servertech.com  
www.servertechblog.com

**Western Europe, Middle East and Africa**

Server Technology  
Fountain Court  
2 Victoria Square  
Victoria Street  
St. Albans  
AL1 3TF  
United Kingdom  
+44 (0) 1727 884676 Tel  
+44 (0) 1727 220815 Fax  
salesint@servertech.com

**Central Europe, Eastern Europe and Russia**

**Niederlassung Deutschland**  
Server Technology LLC  
42119 Wuppertal  
Germany  
Tel: + 49 202 693917 x 0  
Fax: + 49 202 693917-10  
salesint@servertech.com

**APAC**

Server Technology  
Room 2301, 23/F, Future Plaza  
111-113 How Ming Street, Kwun Tong, Hong Kong  
Direct line: +852 3916 2048  
Fax Line: +852 3916 2002  
salesint@servertech.com