

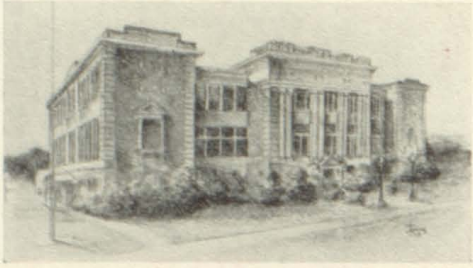


CADMEA
1938



EXCIBRIS





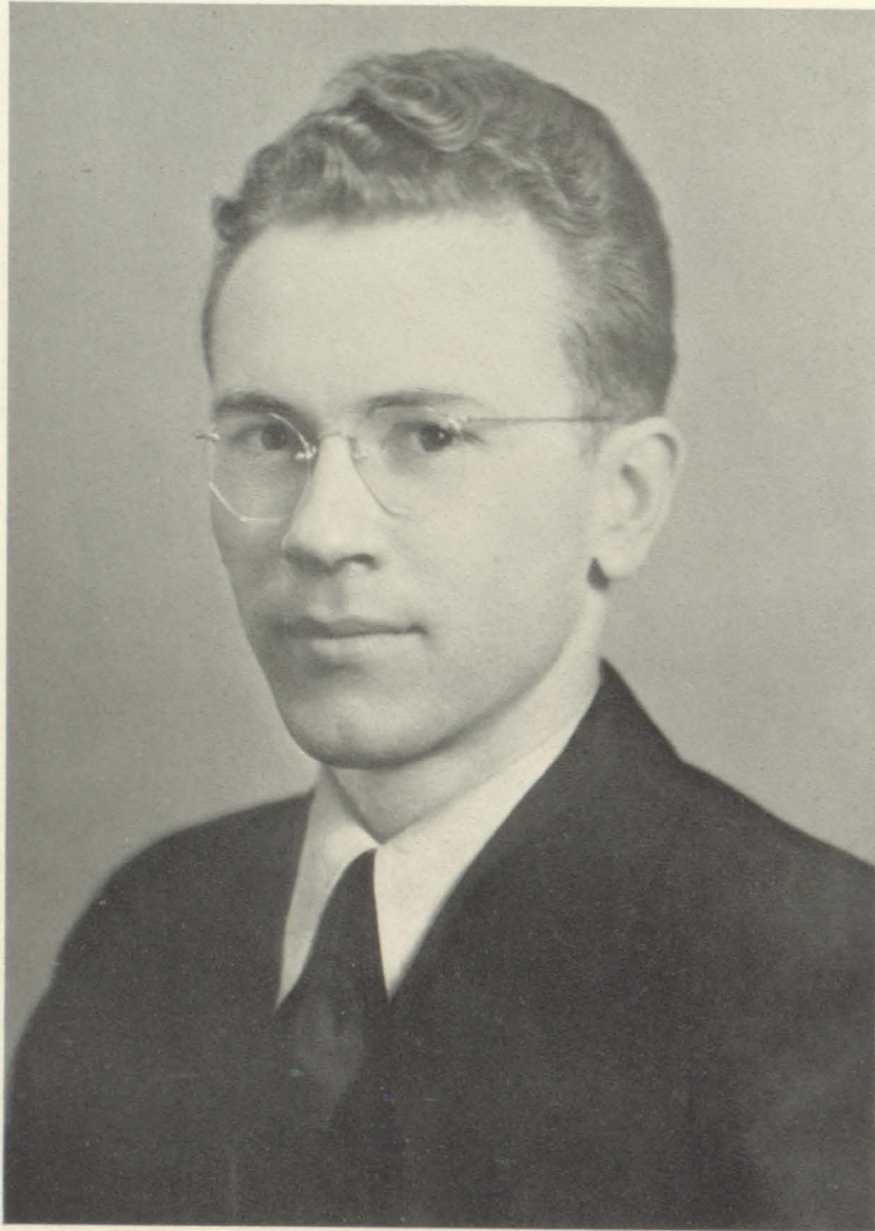
CADMEA

1938

PUBLISHED AT
BRISTOL TENNESSEE
BY THE
SENIOR CLASS
OF
TENNESSEE
HIGH SCHOOL



DEDICATION



To CLYDE E. BURNS, who so untiringly gave of his time and talent not only in behalf of the Cadmus and Debate Clubs, but of the entire school during his years of helpfulness among us.



FOREWORD

When Tennessee High is but a faint memory of a brief span of years, it is our sincere desire that between the covers of the CADMEA the reader may revive one of the happiest and most interesting periods in all his life.

It has been the purpose of the staff in the publication of this yearbook to present an accurate and interesting cross-section of school life at B. T. H. S.

Whatever time and effort the issuance of this book has necessitated, the staff finds a rare pleasure in devoting toward the accomplishment of presenting a lasting panorama of five fleeting years.

CONTENTS

BOOK I

THE SCHOOL

BOOK II

ORGANIZATIONS

BOOK III

ATHLETICS

BOOK IV

FEATURES

THE SCHOOL



JOHN H. ARRANTS, A. B., M. S.

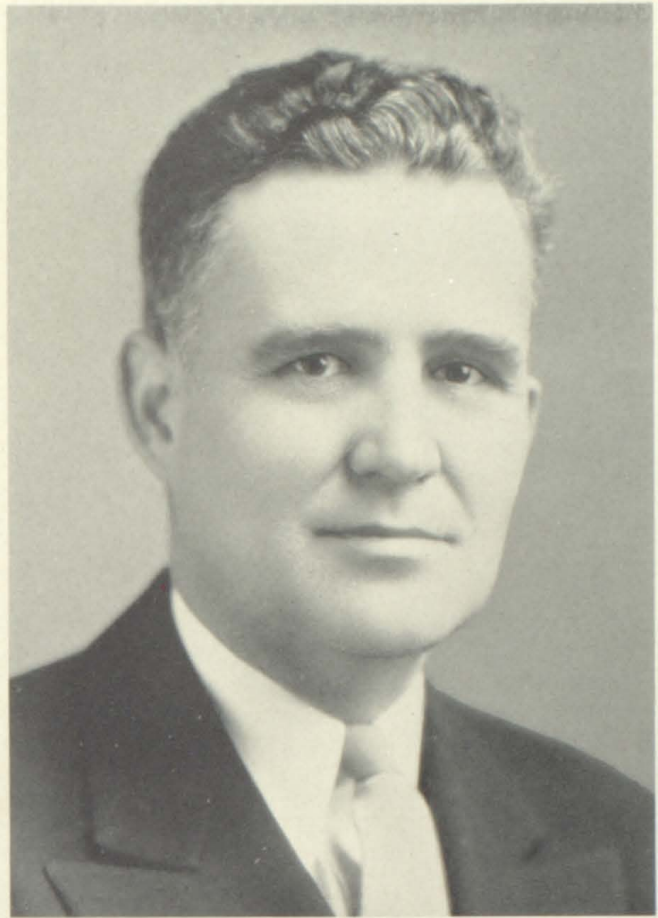
High School Teacher and Principal at
Bledsoe County High

High School Teacher at South Pittsburg,
Tennessee

County Superintendent, Meigs County,
Tennessee

Teacher of Elementary Education, State
Teachers College, Murfreesboro,
Tennessee

City Superintendent, Bristol, Tennessee,
and Pittsburg, Tennessee



I. D. EGGERS, B. S.

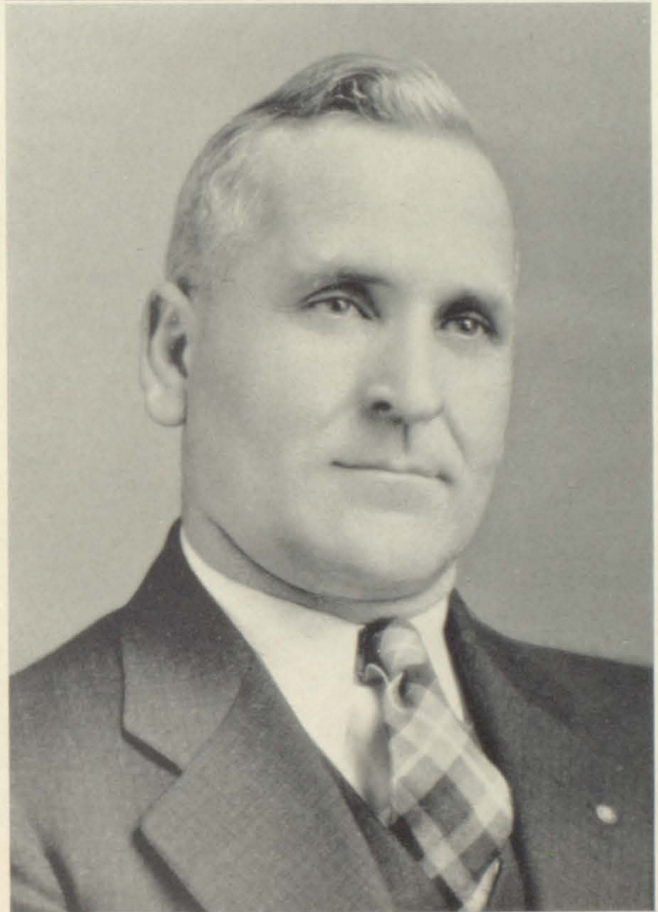
Principal of Johnson County Elementary
School

Teacher and Assistant Principal of Elk-
horn District High School

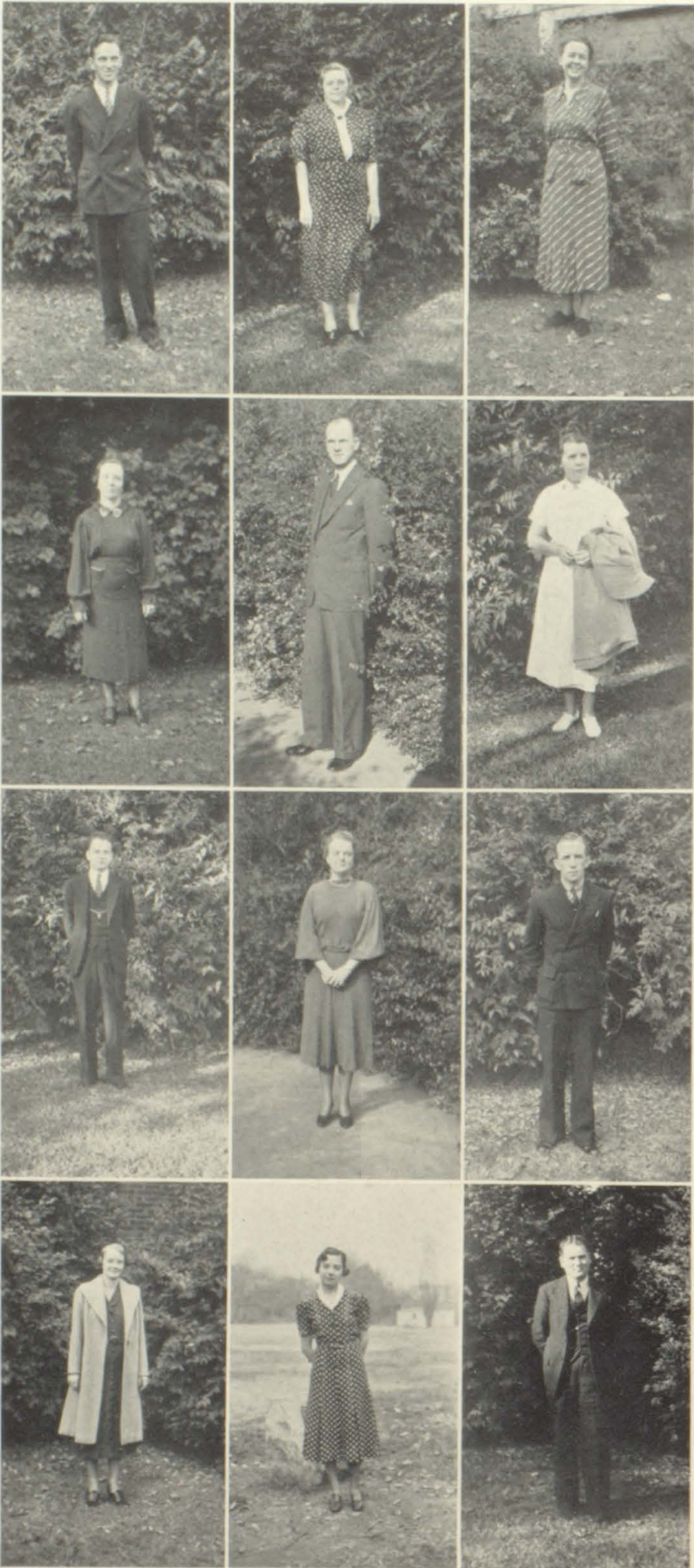
Teacher at Princeton High School

Assistant Principal of Tennessee High
School

Principal of Tennessee High School



FACULTY



McBERNEY BURLESON, B. S.

ENGLISH

Johnson City State Teachers College.

BESS E. BROCE, B. S., A. B.

ENGLISH

Sullins, King College, University of Virginia, University of Besoncon, Johnson City State Teachers College.

GENEVIEVE R. CALDWELL, B. S., M. A.

MATHEMATICS

University of Tennessee, King College.

HALLIE CARSON, A. B., A. B. in L. S.

LIBRARY

Emory and Henry; Emory University.

FRANCIS A. CLARK, B. S., M. S.

SECRETARY—REGISTRAR

Tennessee Tech, Washington University.

PEARL WALLACE COWAN

DIETICIAN

Sullins; Agnes Scott.

GEORGE N. DOVE, A. B., M. A.

ENGLISH

Western Reserve.

ANNIE NEELD DRYDEN, A. B.

FRENCH—MATHEMATICS

Bryson College, University of Tennessee, Columbia University.

EDWARD ESSER, A. B.

SCIENCE—ASST. COACH

King College.

ELIZABETH HICKS FERGUSON, B. S.

HISTORY—CIVICS—ENGLISH

George Peabody College, University of Tennessee, State Teachers College.

SARAH FORTUNE, B. S.

HOME ECONOMICS

Maryville College, University of Tennessee.

GEORGE G. GILLINGHAM, A. B., M. S.

HISTORY—ECONOMICS

Maryville College, University of Tennessee.

FACULTY

MAURINE HAWKINS, A. B.

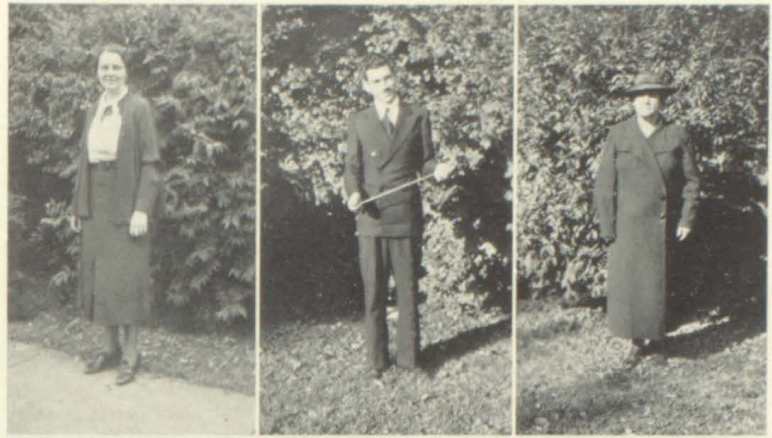
TYPING—LATIN
University of Tennessee, Carson-Newman.

CARLETON A. JOHNSON, A. B.

BAND—GLEE CLUB
University of Iowa, Waukon Junior College.

ANNA BELLE LYNN, A. B.

MATHEMATICS
Sullins College, King College.



MARY RUCKER MARNEY, B. S.

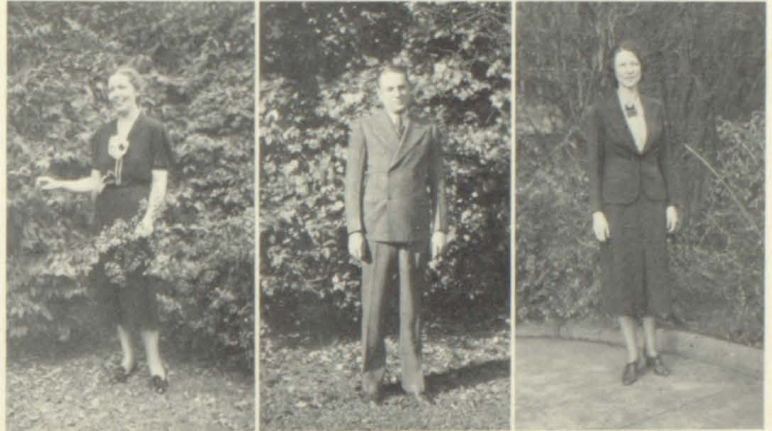
LATIN—ENGLISH
Johnson City State Teachers College, Farmville, Va., State Teachers College, King College, Emory and Henry.

JAMES I. MOONEY, B. S.

INDUSTRIAL ARTS
Johnson City State Teachers College, University of Tennessee.

MARGARET O. NININGER, B. S.

ENGLISH
Virginia Intermont, University of Tennessee, Columbia University.



EVERETT L. ROWE, B. S.

PHYSICS—SOCIAL SCIENCE
Western Kentucky Teacher's College, University of Kentucky.

DELLA SMITH, B. S., M. A.

BIOLOGY—CHEMISTRY
University of Tennessee, University of Virginia, Columbia University, Mountain Lake, Va., Biological School.

E. E. SOLOMON, B. S.

ATHLETIC DIRECTOR—COACH—
SOCIAL SCIENCE
Milligan College, Johnson City State Teachers College, Duke University.



NANCY STERETT, A. B., M. A.

LATIN
Western Kentucky State Teachers College, Peabody College.

EDITH TAYLOR, B. S.

COMMERCIAL
Murfreesboro State Teachers College, University of Chicago.

LUCILE WYMAN, B. S.

PHYSICAL EDUCATION—MATHEMATICS
Virginia Intermont, University of Michigan.



REVELEY OWEN, A. B.

ALGEBRA—GEOMETRY—TRIGONOMETRY
Emory and Henry, S. T. S. T. C., R. M. W. C., Sullins College, Columbia University.

**WILLIAM HENRY
TREADWELL, JR.**

POLYTECHNICAL

Civics Club, '35; Track, '35, '38; Football, '37; Basket-ball, '37-'38; French Club, '36-'38; President, '37; Boys' Hi-Y, '37-'38; Secretary, '38; CADMUS Club, '37-'38; "T" Club, '38; President, Senior Class, '38; Treasurer, Student Council, '37; Senior Play, '38.



HARRY MONROE PHIPPS

POLYTECHNICAL

Sergeant-at-Arms, Sub-Freshman Class, '33; President, Freshman Class, '34; President, Junior Class, '36; Vice-President, Junior Class, '37; President, Senior Class, '37; President, All Students Club, '38; Commercial Club, '34-'35; Boys' Hi-Y, '36-'38; "T" Club, '34-'37; Civics Club, '33; French Club, '36-'38; President, '37; Baseball, '36-'38; Football, '33-'37; Senior Play, '38; Track, '38.

AGNES GRAHAM BACHMAN

CLASSICAL

Audubon Club, '35-'36; French Club, '36-'38; Alchemist Club, '37-'38; Secretary, '37; MAROON AND WHITE, '37-'38; "T" Club, '38; Girls' Hi-Y, '37-'38; President, '38; Secretary, Senior Class, '38.



EMMA SUE THOMAS

COMMERCIAL

Dramatics Club, '35; Glee Club, '36-'37; Secretary, '36; French Club, '36-'38; President, '36-'38; Secretary, '37; Operetta, '36; Junior Class Queen, '37; Secretary, Junior Class, '36; Girls' Hi-Y, '36-'38; President, '37; Secretary, Student Council, '37-'38; Secretary, Senior Class, '37; Treasurer, Senior Class, '38; Giftorian, Senior Class, '38.

WILLIAM COURTNEY BIXBY

POLYTECHNICAL

(Transferred from Florida in 1937.) Boys' Hi-Y, '37-'38; Treasurer, Senior Class, '37; Sergeant-at-Arms, Senior Class, '38.



LESLIE ROWE DRIVER

CLASSICAL AND
POLYTECHNICAL

Civics Club, '34-'35; Audubon Club, '35; Band, '33-'37; Debating Club, '35-'38; President, '36; Treasurer, '37; Secretary, '38; Commercial Club, '36-'37; Public Speaking Club, '36-'38; Vice-President, '36; Alchemist Club, '36-'37; Secretary, '36; Treasurer, Junior Class, '37; Boys' Hi-Y, '37-'38; Treasurer, '37; Tennis Club, '38; Treasurer, Student Council, '38; CADMEA Editor, '37-'38.

DOROTHY RUTH COUNTS

CLASSICAL

Latin Club, '34; Treasurer, Sub-Freshman Class, '34; Secretary, Freshman Class, '35; Dramatics Club, '34-'38; Secretary, '37; Queen of School, '34; Band Sponsor, '35-'37; French Club, '36-'38; Treasurer, '38; Operetta, '37; Junior Class Play, '36; MAROON AND WHITE, '37-'38; CADMUS Club, '37-'38; Girls' Hi-Y, '37-'38; Queen of Senior Class, '38.



GERALD HARLEY CLARK

CLASSICAL AND
POLYTECHNICAL

Manual Arts Club, '34-'35; Audubon Club, '35-'36; President, '36; Alchemist Club, '36-'37; President, '37; French Club, '36-'38; Football, '35-'37; Co-Captain, '37; Track, '35-'38; Dramatics Club, '36; Vice-President, '36; Boys' Hi-Y, '36-'38; President, '37; "T" Club, '37-'38; Junior Class Play, '37; Debating Club, '37-'38; CADMEA Business Manager, '38.

BENNETT Y. COWAN

CLASSICAL AND
POLYTECHNICAL

Audubon Club, '35-'36; Basketball, '37; Alchemist Club, '36-'37; Commercial Club, '37; Sergeant-at-Arms, Junior Class, '37; Boys' Hi-Y, '37-'38; President, '38.



THELMA LOUISE BLEVINS

COMMERCIAL

Audubon Society, '35; French Club, '36-'38; Civics Club, '35-'36; Commercial Club, '35-'36.

EVELYN AYERS HAGY

CLASSICAL

Glee Club, '33-'38; Librarian, '37; Dramatics Club, '35-'38; Public Speaking Club, '34-'38; Secretary, '35; Vice-President '36; President, '37; Alchemist Club, '36-'37; French Club, '36-'38; Girls' Hi-Y, '36-'38; Secretary, '38; MAROON AND WHITE, '37-'38; Junior Class Play, '36; Operetta, '38.



JAMES CLYDE MOORE

MANUAL ARTS

Band, '33-'35; Civics Club, '34-'35; Future Craftsman Club, '36.

JAMES RALPH WORLEY

POLYTECHNICAL

Basket-ball, '34-'38; "T" Club, '38; Tennis Club, '37-'38.



EDITH MAXINE McCROSKEY

CLASSICAL AND
POLYTECHNICAL

Dramatics Club, '33-'38; Secretary, '37; Latin Club, '34; Civics Club, '34-'35; Public Speaking Club, '34-'36; Treasurer, '36; Glee Club, '36-'38; Junior Class Play, '36; CADMUS Club, '37-'38; Girls' Hi-Y, '37-'38; Girls' Basketball, '36; Senior Play, '38.

**MARILYN DOUGHERTY
SPINKS**

CLASSICAL

Civics Club, '35; Dramatics Club, '36-'38; French Club, '36-'38.



FRANCIS DOUGLAS BOY

POLYTECHNICAL

Civics Club, '33; Science Club, '35; Football, '36; Basketball, '36; French Club, '36-'38; Dramatics Club, '38; Junior Class Play, '36.

WALTER BENJAMIN BUCKLES

MANUAL ARTS

Civics Club, '34-'35; Future Craftsmen, '36; French Club, '36-'38; Commercial Club, '37.



GLADYS RUBY BERKLEY

COMMERCIAL

Glee Club, '35-'38; Commercial Club, '37-'38; Audubon Club, '35-'36.



PAULINE MILDRED KENSINGER

COMMERCIAL

Civics Club, '34-'35; Audubon Society, '35-'36; Commercial Club, '36-'37; Alchemist Club, '37-'38.



ROBERT LEE RADER

POLYTECHNICAL

Civics Club, '34-'35; Tennis Club, '34-'36; French Club, '36-'38; Boys' Hi-Y, '37-'38.



BRANDON CLARENCE HAGEY

STATE

French Club, '36-'38; Latin Club, '34; Civics Club, '34; Golf, '35; "T" Club, '35-'38.



ALMA BERNICE GODSEY

CLASSICAL

Glee Club, '36-'37; Alchemist Club, '36-'37.



HAZEL WHITEAKER

CLASSICAL AND POLYTECHNICAL

Latin Club, '34; Tennis Club, '34-'35; Public Speaking Club, '35-'36; Glee Club, '36-'38; Dramatics Club, '37; CADMUS Club, '37-'38; Alchemist Club, '37-'38; Girls' Hi-Y, '37-'38; "T" Club.



CLARENCE FULWIDER

CLASSICAL

Glee Club, '36-'37; French Club, '36-'38; Vice-President, '37; Alchemist Club, '37-'38; Sergeant-at-Arms, '37.



HOWARD THOMPSON

CLASSICAL

Glee Club, '35-'38; President, '38; Latin Club, '34; Vice-President, '34; Athletic Club, '33; Alchemist Club, '38; Vice-President, '38; MAROON AND WHITE, '35-'38; French Club, '36-'38; President, '37; Orchestra, '37-'38; Boys' Hi-Y, '38.



IRENE IRIS JOHNSON

GENERAL

Glee Club, '38; Dramatics Club, '38.



VIVIAN PAULINE McCARY

COMMERCIAL

Glee Club, '35; Civics Club, '35; Dramatics Club, '35-'37; Audubon Society, '36.



FRED T. CARRIER, JR.

MANUAL ARTS

President, Sub-Freshmen, '34; Baseball, '35; Civics Club, '34-'35; President, '34; Boys' Hi-Y, '37-'38; Secretary, '37; Football, '35-'37; "T" Club, '35-'37; Future Craftsmen Club, '37-'38.

WILLIAM HENRY PHELPS

MANUAL ARTS

Civics Club, '34-'35; Commercial Club, '34-'35; Future Craftsmen Club, '36-'37; Manual Arts Club, '34-'36; Football, '34.



RUTH COX BACHMAN

CLASSICAL

Latin Club, '34; Tennis Club, '34-'35; Dramatics Club, '35-'38; Glee Club, '35; Queen of Freshman Class, '35; MAROON AND WHITE, '36-'38; CADMEA Staff, '37-'38; French Club, '36-'38; Treasurer, '37; Cheerleader, '36-'38; "T" Club, '36-'38; Junior Class Play, '36; Operetta, '34-'36; Girls' Hi-Y, '37-'38; Audubon Club, '36-'37; Senior Play, '38.

SYLVIA MARGUERITE HENSLEY

COMMERCIAL

Civics Club, '34-'35; Commercial Club, '35; Audubon Society, '35-'36; Girls' Hi-Y, '37-'38.



MILTON BEWLEY ABERCROMBIE, JR.

POLYTECHNICAL

Dramatics Club, '36-'37; French Club, '36-'38; Civics Club, '34-'35; Alchemist Club, '36-'37; MAROON AND WHITE, '36; Junior Class Play, '36.

HENRY ALFRED FAIVRE, JR.

CLASSICAL, COMMERCIAL
MANUAL ARTS
POLYTECHNICAL

MAROON AND WHITE, '36-'38;
Editor MAROON AND WHITE,
'37-'38; Manual Arts Club, '34-'35;
Future Craftsman Club, '36-'37;
Civics Club, '34-'35; Commercial
Club, '36; Boys' Hi-Y, '36-'38;
Vice-President, '37; Debate Club,
'35-'37; President, '36; Glee
Club, '34-'37; President, '36.



GRETCHEN LUCILLE DROKE

GENERAL

Glee Club, '34-'37; Alchemist
Club, '37-'38; Civics Club, '35-
'37; President, '36; Operetta, '37;
President, Junior Red Cross, '37-
'38; MAROON AND WHITE, '37-
'38; Quill and Scroll, '37-'38;
Girls' Hi-Y, '37-'38.

JULIA ELLEN CLAYMAN

COMMERCIAL

Commercial Club, '35-'36; Glee
Club, '36-'38; French Club, '36-
'38.



HENRY TUCKER SMITH

POLYTECHNICAL

Manual Arts Club, '33; Civics
Club, '33-'34; President, '34;
Football, '34-'38; Basket-ball, '36-
'38; Co-Captain, '37-'38; "T"
Club, '36-'38; Boys' Hi-Y, '36-'38;
Sergeant-at-Arms, '38; French
Club, '36-'38; President, '37;
Vice-President, '37; Sergeant-at-
Arms, Senior Class, '38.

MOSE CLIFTON HELTON

POLYTECHNICAL

Civics Club, '34-'35; Latin
Club, '34-'35;



KATHERINE ANN FOGARTY

COMMERCIAL

Intramural Council, '33-'37;
Civics Club, '34-'35; Glee Club,
'36-'37; Dramatics Club, '35-'36;
Commercial Club, '35-'36; Oper-
etta, '36-'38; Audubon Club, '37;
"T" Club, '37.

DORIS EDITH BLEVINS

CLASSICAL

Civics Club, '34-'35; Dramatic
Club, '34; Glee Club, '34-'38.



**KENNETH GRANT
MESSEROLE, JR.**

POLYTECHNICAL

Vice - President, Sophomore
Class, '35; President, Sophomore
Class, '36; Vice-President, Junior
Class, '36; President, Junior
Class, '37; Vice-President, Senior
Class, '37; President, Student
Body, '37; Vice-President, Student
Body, '38; Alchemist Club, '36;
Vice-President, '36; Civics Club,
'34-'35; "T" Club, '35-'38; Golf,
'34-'38; Basket-ball, '36-'38; Cap-
tain, '38; Base-ball, '34; Foot-
ball, '37; Boys' Hi-Y, '37-'38.

JAMES BURKHART CAWOOD

POLYTECHNICAL

Civics Club, '34-'35; French Club, '36-'38; Band, '36.



CAROLINE BROWN RIDDLE

CLASSICAL

Civics Club, '34-'35; Intramural Council, '33-'37; Basket-ball, '33-'38; Volley-ball, '33-'38; Tennis Club, '34-'36; Alchemist Club, '36-'37; Sergeant-at-Arms, '37; Dramatics Club, '36-'38; Junior Class Play, '37; French Club, '36-'38; Girls' Hi-Y, '36-'38; Treasurer, '37; Senior Play, '38.

EVELYN EILEEN STONE

POLYTECHNICAL

Civics Club, '35; French Club, '36-'38; Alchemist Club, '37; Girls' Hi-Y, '37-'38; Glee Club, '37-'38.



JAMES EDWIN NEEL

CLASSICAL AND POLYTECHNICAL

Civics Club, '34; Latin Club, '34; French Club, '36-'38; Band, '35-'38; Commercial Club, '36; MAROON AND WHITE, '37-'38; Tennis Club, '37; Glee Club, '36-'38; Operetta, '38; Football Manager, '37; Track, '38; Basket-ball, '37; "T" Club, '38; Senior Play, '38.

GEORGE VANCE

MANUAL ARTS

Civics Club, '34-'35; Future Craftsmen, '37.



DOLORES LA VERNE RIDDLE

CLASSICAL

Latin Club, '34; Glee Club, '34-'38; Dramatics Club, '35-'38; Public Speaking Club, '35-'36; French Club, '36-'38; Secretary, '37-'38; Operetta, '36-'38; Secretary, Junior Class, '37; Cadmus Club, '37-'38; MAROON AND WHITE, '37-'38; Girls' Hi-Y, '36-'38; Secretary, '37.

JUNE MARGUERITE O'DELL

POLYTECHNICAL

Civics Club, '34-'35; Latin Club, '34-'35; Dramatics Club, '34-'35; Glee Club, '34-'35; French Club, '36-'38.



HERBERT EUGENE SMITH

POLYTECHNICAL

Glee Club, '35-'38; French Club, '36-'38; Civics Club, '34; Operetta, '38.

SHIRLEY MILDRED MILLER

COMMERCIAL

Civics Club, '33-'34; Glee Club, '36-'37; Dramatics Club, '37-'38; Girls' Hi-Y, '37-'38; Junior Class Play, '36; Commercial Club, '35-'37; Audubon Club, '36; Volley-ball, '34-'35; Kick-ball, '34-'35; Basket-ball Team, '34-'35; Glee Club Scribe, '38.



DOROTHY JEAN SAYLES

CLASSICAL

Volley-ball, '33-'38; Alchemist Club, '36-'38; Basket-ball, '35-'37; Baseball, '37; Captain, '37; Glee Club, '36-'38; Librarian, '37; Girls' Hi-Y, '36-'38; Vice-President, '37; Secretary, '38.

WILLIAM EUGENE HAGEY

CLASSICAL

Civics Club, '34-'35; Public Speaking Club, '36-'37; President, '36; Vice-President, '37; Audubon Society, '36; All Students Club Council, '36; Alchemist Club, '36-'37; Scout, '36; Boys' Hi-Y, '37-'38; Latin Club, '34; Sub-Freshman Class Treasurer, '33; Operetta, '38.



BEATRICE MARIE BROWN

CLASSICAL

Intramural Council, '35-'37; Audubon Society, '36-'37.

**MARGARET AMANDA
ARRANTS**

COMMERCIAL

Audubon Club, '34-'36; Civics Club, '34-'35.



GENEVA KATHERINE KING

CLASSICAL

Glee Club, '34-'38; Treasurer, '36; Public Speaking Club, '35-'38; Girls' Hi-Y, '37-'38; Alchemist Club, '37-'38; Scout, '37; President, '37; Orchestra, '38; Treasurer, Sub-Freshman Class, '34; Dramatics Club, '38; Treasurer, '38; MAROON AND WHITE, '38; Operetta, '36-'37; Audubon Society, '36.

BILLIE JEAN SMITH

COMMERCIAL

Civics Club, '35; Bird Club, '35; French Club, '36-'38.



HENRY STUART SNODGRASS

POLYTECHNICAL

Civics Club, '33-'34; Manual Arts Club, '33-'35; Golf, '35-'38; French Club, '36-'38; "T" Club, '37-'38; Boys' Hi-Y, '38.

**CHRISTINE EVELYN
HOLLOWAY**

VOCATIONAL

Glee Club, '33-'38; Civics Club, '34-'36; French Club, '35-'36; Tennis Club, '33-'34; Intramural Council, '34-'37; Athletic Council, '34-'35; Dramatics Club, '36-'37; MAROON AND WHITE, '36-'38.



MARK D. RICHARDS

GENERAL

Civics Club, '35; Junior Class Play; Football, '36-'37; Boys' Hi-Y, '36-'38; Sergeant-at-Arms, '37; Cadmus Club, '37-'38; "T" Club, '37-'38; Track, '38.

MARY NOLA MILBURN

CLASSICAL

(Transferred from Johnson City in 1937.) Dramatics Club, '38; Public Speaking Club, '37; Glee Club, '37-'38; Girls' Hi-Y, '35-'37; Latin Club, '34-'36; Dramatics Club, '35-'36; Civics Club, '35-'37; Debate Club, '35; Glee Club, '34-'36.



LOIS RUBY TRAMMELL

CLASSICAL

Latin Club, '34; Tennis Club, '34-'35; Public Speaking Club, '35-'38; Secretary, '36-'37; Alchemist Club, '37-'38; Intramural Council, '35-'36; Cadmus Club, '37-'38; Girls' Hi-Y, '37-'38; Basketball, '33-'38.

JOE KELLER THOMAS

MANUAL ARTS

Band, '33-'38; Civics Club, '34-'35; Industrial Arts, '35; Future Craftsmen, '36-'37; Track, '35, '38; Operetta, '37; Boys' Hi-Y, '36-'38; Orchestra, '36-'38; French Club, '36-'38.



WILLIAM CLYDE HARDIN

MANUAL ARTS

Civics Club, '34; Glee Club, '34-'36; "T" Club, '36-'38; Boys' Hi-Y, '37-'38; Commercial Club, '37; Vice-President, '37; Sergeant-at-Arms, Glee Club, '36; Manager Football, '35; Basketball, '35-'37; Cheer Leader, '37-'38; French Club, '35-'36; Golf, '35-'37.

MARY RUTH STEPPE

COMMERCIAL

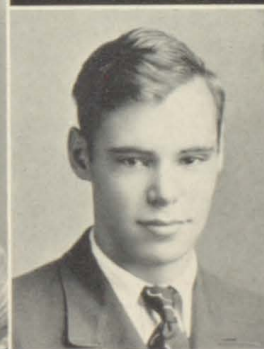
Commercial Club, '34-'35; Cadmus Club, '37-'38; Intramural Council, '37-'38.



MILDRED FRANCES GLOVER

COMMERCIAL

Audubon Club, '35-'36; Civics Club, '33-'35; Public Speaking Club, '35-'36.



ROBERT ALISON KELLY

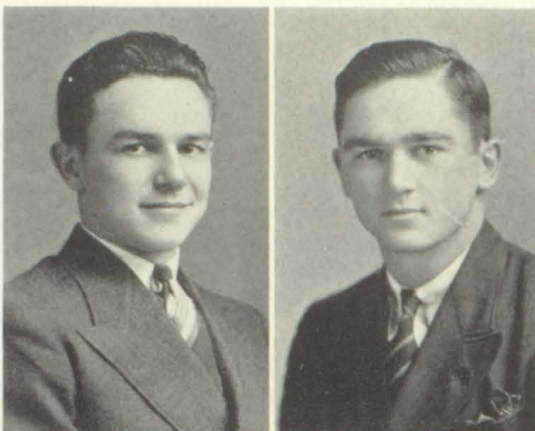
CLASSICAL

Glee Club, '36-'38; Treasurer, '37; Librarian, '37; Sergeant-at-Arms, '38; Dramatics Club, '36-'37; French Club, '36-'37; Band, '38; Debate Club, '37-'38; Treasurer, '37; President, '38; Operetta, '35-'38; Junior Class Play, '36; Civics Club, '34-'35; Senior Play, '38.

CHARLIE LESTER COFFEY

COMMERCIAL

(Transferred from Richmond in 1936.) Cheer Leader, '36-'37; Track, '38; Junior Class Play, '37; Glee Club, '35-'36; Band, '35-'36; Football, '35-'36; Track, '35-'36; Basket-ball, '35-'36.



JAMES I. HAWKINS

STATE

President, Sub-Freshman Class, '32; Civics Club, '35; Dramatics Club, '35; "T" Club, '35-'37; Commercial Club, '35-'37; President, '35; President, Sophomore Class, '35; Boys' Hi-Y, '38; Football, '34-'37; Co-Captain, '37; Basket-ball, '36-'37; Glee Club, '34-'35; Future Craftsman, '35-'36; Cheer-leader, '35.



LEON ARTHUR CARRIER

CLASSICAL

Band, '34-'38; Glee Club, '35-'38; Civics Club, '34-'35; French Club, '36-'38; Alchemist Club, '37-'38; Public Speaking Club, '36; Orchestra, '37-'38.



LOIS H. SAWYER

COMMERCIAL

Civics Club, '34-'35; Commercial Club, '35-'37; Glee Club, '35-'38; Girls' Hi-Y, '36-'38; Audubon Club, '35.



SENIOR CLASS OFFICERS

HARRY PHIPPS	President	BILL TREADWELL
KENNETH MESSEROLE	Vice-President	HARRY PHIPPS
EMMA SUE THOMAS	Secretary	AGNES BACHMAN
WILLIAM BIXBY	Treasurer	EMMA SUE THOMAS
HENRY SMITH	Sergeant-at-Arms	WILLIAM BIXBY

CLASS SONG

Farewell! Our high school days are past.
 We bid our friends adieu;
 And Juniors, we are leaving
 A fine old school for you.

Through four long years we've labored
 But now our task is o'er.
 We leave the school we cherish;
 Our classrooms call no more.

Our treasure chest of memories
 Will hold a place for you,
 A place we'll dearly cherish,
 For to you we're ever true.

Words—EVELYN HAGY

Music—HOWARD THOMPSON

COLORS

Pink and White

FLOWER

Rose

TIME MARCHES ON

Let's think back, Seniors, to the fall of '33, in which we started our high school career. We felt terribly self-conscious, and the showers which the upper classmen managed to put us under didn't add to our merriment. We got lost in the halls between classes, and we couldn't understand why we were supposed to eat lunch twice when no one else did. Our arms ached from carrying our books, for the Subs were the last to get their lockers; but this was overbalanced by the fact that we had been permitted to buy our seats in the auditorium the first day we came to Tennessee High.

Those of us who didn't understand what Miss Lynn meant when she said, "No communicating," and who had the misfortune of being guilty of such offense, spent many afternoons in her class room.

Our greatest achievement during the year was the crowning of our class' candidate as Queen of the Mardi Gras.

Remember how reluctant we were to go out in the rain when the building caught on fire the following spring?

Somehow we had managed to pass our exams, and when the fall of 1934 came around, we felt very important as we became members of the Freshman class. Our feeling of importance was short-lived, however, when Mr. Ladd spoke to us in Latin. We realized then that our store of knowledge was exceedingly small; so small, in fact, that we attended many of his "Tea Parties" in our thirst for knowledge.

We returned as Sophomores the following September. Our subjects seemed harder this year, so we managed to find a little time for studying. That made the year seem quite different from the preceding ones. Miss Owen gained our respect by proving to us that it's raining when it's not raining.

We realized that we were at last upper classmen when we returned in the fall of 1936. In December, we presented the Junior Class Play, "THE SIGN OF THE PEWTER JUG," under the direction of Miss Nininger. It was a great success both financially and otherwise. The only criticism was that the fight in it between Milton Abercrombie and Winfield Stickley was too realistic.

In May we had the Junior Outing at Big Creek. Those having Eskimo antecedents doubled their appetites with a swim before supper. Afterwards, Mr. Talbert demonstrated his ability to hypnotize.

At last we were Seniors! For the officers of the fall term, we chose Harry Phipps for president, Kenneth Messerole for vice-president, Emma Sue Thomas for secretary, Bill Bixby for treasurer, and Tucker Smith for sergeant-at-arms. We have chosen our invitations; the Operetta and the Senior Play proved to be finely cast and excellently produced.

We finish our twelve-year course gayly and yet reluctantly. As our school days become history, our greatest hope is that we may each be an asset to Tennessee High in the years to follow.

RUTH BACHMAN, Historian.

AS A PARTING WORD

We, the members of the Senior Class of Tennessee High School, City of Bristol, State of Tennessee, being of different and variable minds and of sound and healthy bodies, do hereby give this as the last will and testament of the Class of 1938.

FIRST: To Mr. Arrants and Mr. Eggers we will many good wishes and kind feelings in their struggle to keep those of high and low attainment in the straight and narrow path that leads to graduation.

SECOND: To our ever-attentive sponsors, Mrs. Ferguson, Miss Owen, and Mr. Burleson, we leave our sincerest appreciation for their patience with us in our struggle for graduation.

THIRD: To the Junior Class we will our many tendencies to do right and wrong, our dreams and our fantasies and dignity which characterize every Senior class. We further assign to them the chapel seats that we leave vacant with the simple injunction that they be true Seniors and do honor to their school.

FOURTH: To the Sophomores we leave all the wisdom that may enfold itself to members of their clan with the hope that they may learn in this wise stage of education some of the actual roles of life.

FIFTH: To the Freshmen and Sub-Freshmen we will all the possible exultations that come to those just entering high school work. We also wish them all the high aims and aspirations that may accumulate in their fanciful store-house of thought.

SIXTH: Emma Sue Thomas leaves her sweet disposition and affable attitude to Adelaide Mahoney. . . . Bill Bixby, being a shark in all subjects, wills to Frank Nidiffer and David McKee the above title. . . . Billie Jean Smith, Robert Kelly, Vivian McCary, Katherine King, Edith McCroskey and Mildred Miller leave their outstanding records to Tennessee High. . . . Evelyn Hagy bequeaths her dramatic ability to Frances Quillen, Doris Bewley, and Eleanor Roberts. . . . W. C. Hardin, Robert Wallace, Brandon Hagey, Charles Coffey, and Jimmy Hawkins, knowing the necessity of graduating, but not realizing the effort that must be put forth, do hereby bequeath their desirous attitude for graduation to Bill Thomas, Zeb Osborne, Hugh Powers, and Julian Sisler. . . . Ruth Bachman wills to Harriet Hammer her skill at winning her arguments with Mr. Eggers, with the hope for continued success. . . . George Brown leaves, with a great deal of reluctance, his orchestral ability to Benny Goodman. . . . Kenneth Messerole and Harry Phipps leave their all-round sportsmanship as well as their ability as office-holders to Fred Vance and Fred Everett. . . . Clarence Fulwider and Howard Thompson will their talent with the finger-tips to Billy Birdwell and Elizabeth Fleming, with the provision that they pass it on to other classes. . . . Benny Cowan and Alfred Faivre leave their studiousness to Craig Caldwell, Robert Crenshaw, Duane Calhoun, and Erskine Parks. . . . Carolyn Riddle and Ruth Steppe will their unique power of wit and humor to Doris Keesling. . . . Henry Snodgrass wills to his little brother, "Speck", his golf technique. . . . Julia Clayman, Hazel Whiteaker, Thelma Blevins, and Marguerite Hensley leave their angelic appearance and modest simplicity to Eleanor Keebler, Katherine Bondurant and Claire Evelyn Boyd. . . . Dorothy Sayles bequeaths her unusually quiet disposition to Dorothy

McClellan. . . Marilyn Spinks, Dorothy Counts and La Verne Riddle will and bequeath their popularity to Dorothy Rutherford, Sarah Elizabeth Epperson, Gaynelle Fleenor, Williebelle Marcy, Ellen Rollins and Hunter Johnston. . . Margaret Arrants, George Vance, and James Cawood, with great willingness, leave some of their poundage to Frank DeFriece, Ernestine Callahan, and Herbert Smith. . . Milton Abercrombie, Bill Treadwell, and Mark Richards bequeath the sobriquet of "Ladies' Men" to Ed Whiteaker, George Legg, David Powers, and "Sonny" Buckles. . . Robert Rader, knowing the knowledge that can be gained by asking questions, wills the above asset to Helen Frances Stover. . . Marie Brown, Eileen Stone, and Lois Trammell bequeath their athletic strategy to Catherine Gray, Ada Lynn Hawkins, and Carmen Lilly. . . Gerald Clark wills to Jack Cowan his befuddled, yet elaborate efforts in giving classroom explanations. . . Austin Combs and Christine Holloway bequeath their vocal ability to Carolyn Grubbs, Frances Pair, Robert Hagan, Jim Counts, and Delilah Lowe. . . Fred Carrier, Douglas Boy, and James Moore leave their well-worn books, that have cost them so many hours of study(?), to John Paul Senter, Daniel Miller, and Rex Newman, with the understanding that they make greater use of them. . . Munsey Slack grants his popularity at the institutions of higher learning to Bill Torbett. . . Rowe Driver wills and bequeaths his great argumentative power to any member of the Junior Class who is willing to carry on the good work. . . James Neel bequeaths his crop of the prettiest hair to Mr. Burleson, hoping it will aid in keeping his in place. . . Gladys Berkley, June O'Dell, and Irene Johnson leave their ever-helpful attitude to Arnetta Leonard, Mary Janes and Elizabeth Moore. . . T. L. Hagler, William Phelps, and Walter Buckles leave to Wade Foster and Jack Kestner their solemnity and tranquillity. . . Tucker Smith wills his way with the college girls to Ted Davis. . . Lucile Droke leaves to Winfield Stickley her heart, hoping he will keep it until he graduates. . . Alma Godsey wills her love for chewing gum to Dorothy McGhee. . . Pauline Kensinger and Mary Milburn bequeath their knack at history to Mary Alice Mottern, Elizabeth Houser, and Lois Calhoun. . . Mildred Glover leaves her desire for More(y) Hyder to any Sub-Freshman who might be interested. . . James Worley wills his tennis skill to Chester Butterworth. . . Mose Helton and Joe Thomas leave to Riddick McAnge their affection for aluminum plants. . . Katherine Fogarty leaves her string of King boys to her sister Alice. . . Doris Blevins and Lois Sawyer bequeath their ever-present and radiating smiles to Katherine Bush, Carolyn Cowan, Edith Fleenor, and Martha Post.

We, the undersigned, do respectively submit this, our last will and testament on this second day of June, 1938.

Signed:

WILLIAM HAGEY,

Legator of Senior Class.

Witnesses:

WILLIAM TREADWELL, President

MR. BERNEY BURLESON, Sponsor

MRS. ELIZABETH FERGUSON, Sponsor

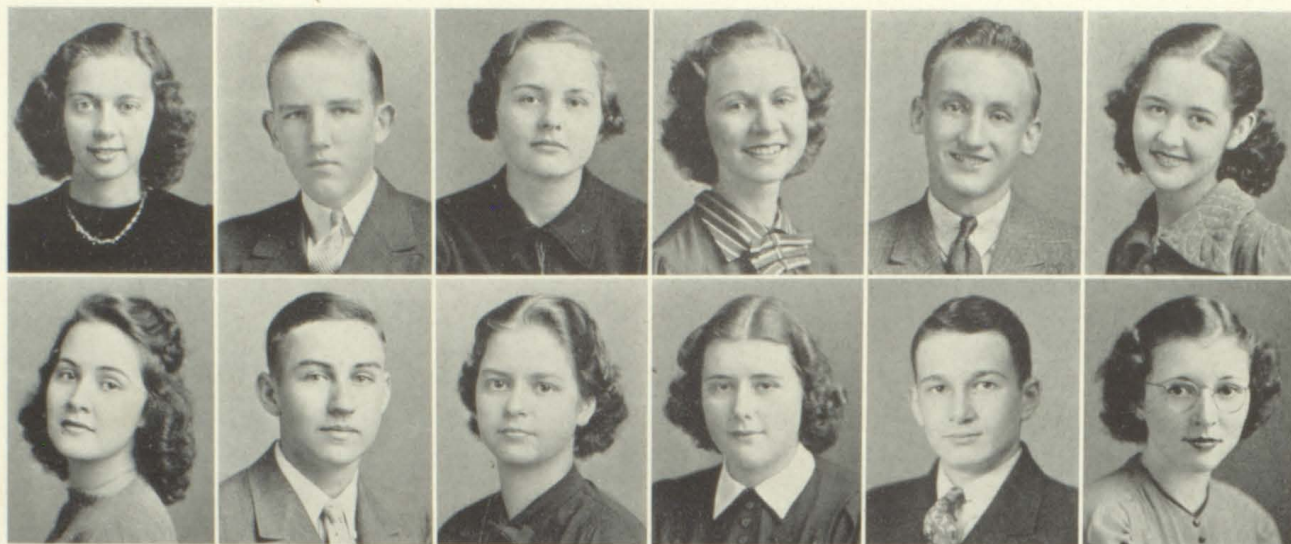
MISS REVELY OWEN, Sponsor

“CROSS MY PALM WITH SILVER”

Hold your seats, ladies and gentlemen. The performance is not over yet. I am now going to gaze into the crystal ball and foresee exactly what is going to happen to the members of the Senior Class after graduation. Ah—it begins to clear—I see, I see:

Sir Malcolm Abercrombie burning up the roads trying to get around a certain Hill. . . . Margaret Arrants happily married to an alarm clock manufacturer. . . . Ruth Bachman looking around for an athlete to add to her male harem. . . . Duane Calhoun lifting a 500-lb. weight in Mr. Ringling's circus. . . . Dorothy Sayles living in a purple tent in Florida trying to keep the place from looking Messy. . . . Bill Treadwell life-guarding at Miami Beach and drawing "Oh's" and "Ah's" from the young ladies who admire his magnificent physique. . . . Edith McCroskey washing behind three or four little people's ears. . . . Lois Trammell making a speech to the Young Democrats of America. . . . Munsey Slack teaching a dancing class for girls only. . . . Robert Wallace telling ghost stories to a group of small children. . . . Ruth Steppe swimming UP Niagara Falls—going over in a barrel is too easy. . . . Douglas Boy showing Robert Taylor how it should be done. . . . George Brown singing "I'd Rather Lead a Band." . . . Robert Kelly at the console of his mighty clarinet. . . . Frances Pair's name on an advertisement for powder for blonds. . . . F. T. Carrier pitching for the New York Yankees. . . . Billy Jean Smith writing a French dictionary. . . . William Phelps trying to figure out why he is called "Race-Horse." . . . Marie Brown saying, "Number, please?" . . . Lois Sawyer being seen a lot with the new governor of Tennessee, Harry Phipps. . . . Joe Thomas taking over the Jolly-Time Popcorn industry. . . . Agnes Bachman signing a Cocomalt advertisement saying, "You too can have beautiful legs." . . . Bill Bixby joining the Foreign Legion to be with his old pal, Mr. Gillingham, who joined when one of his history students discovered he had never been to Alcoa. . . . Mildred Miller teaching Mr. Gillingham's old class. . . . Dot Counts selling adding machines. . . . Reverend Driver spicing his sermons with stale jokes and Riddles. . . . La Verne Riddle singing classical music to a full house. It's raining outside. . . . Benny Cowan crossing the Atlantic in a canoe. . . . Tucker Smith explaining Einstein's theory to a certain Sullins girl, Anne she's the one who sat on his poor tired feet, too. . . . Gerald Clark Hammering a line for L. S. U. . . . Mark "The Great" Richards meeting all comers in the Cumberland Arena on Thursday nights. . . . James "Abie Boy" Hawkins, new manager of the Paramount, refusing to charge admission to V. I. and Sullins students. . . . James Worley. "Tennis is his racket." Wow! Pun! . . . W. C. Hardin and Brandon Hagy breaking golf sticks over each other's heads after miss-

ing a couple of easy putts. . . . Henry Snodgrass, club pro, laughing at their plight. . . . James Neel and Walter Buckles fighting it out for the paper-weight boxing championship of the world. . . . Robert Rader still wondering who put all those "X" marks on his Trig papers. . . . Emma Sue Thomas still having a bigger variety of dates than any of these young upstarts. . . . Caroline Riddle making phonographs records so she can hear herself talk. . . . Clarence Fulwider recognized as the world's greatest genius on the organ. . . . James Cawood running Lynn-Kaylor's little old grocery store out of business. . . . Leon Carrier still taking French Four. . . . Howard Thompson, prominent Bristolian, playing the piano for a group of youngsters in Tennessee High's new auditorium. . . . Winfield Stickley trying to convince Lucille Droke that living on a farm is lots of fun. . . . James Moore experimenting on a new explosive with which he plans to blow up Japan and Germany, thus ending the wars. . . . Alma Godsey writing satirical poetry about corruption in government. . . . Mose Helton inventing a new kind of English book that will not only give you all the information you want, but also studies your lesson for you. . . . Hazel Whiteaker digging out her birth certificate so she can prove she is no relation to Ed. . . . Evelyn Hagy on the stage doing dramatic impersonations. . . . Marilyn Spinks snickering as she swings down the street and causes a truck driver to crash through a brick wall. He hadn't figured on that. . . . Billy Hagey singing for the King of England. . . . Eileen Stone and Katherine Fogarty playing basketball in Madison Square Garden. . . . Julia Clayman learning to talk with her fingers so she won't have to say anything out loud. . . . Pauline Kensinger proving that all red-heads don't have hot tempers. . . . Gladys Berkley pulling a man's hair for saying that King College is not the best little school in the world. . . . Mr. Burluson - - - Sorry, folks, this is just too much for a frail little crystal ball. It has cracked right down the middle and I can't see a thing.



TOP ROW: ARNETA LEONARD, ROBERT CRENSHAW, SHIRLEY BAUMGARDNER, ELIZABETH FLEMING, LEON CARRIER, MARY DIXIE GREER.

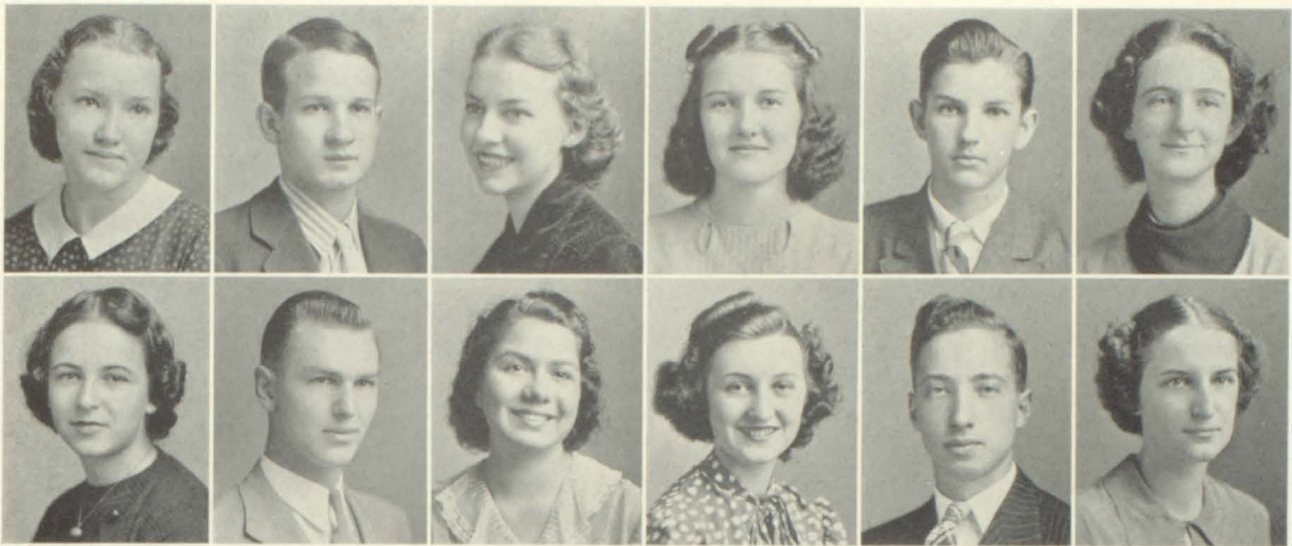
BOTTOM ROW: DOROTHY RUTHERFORD, CRAIG CALDWELL, CAROLYN GRUBBS, ELIZABETH MOORE, ERKSKINE PARKS, RUBY HAMM.

JUNIOR CLASS

TOP ROW: VIRGINIA RICHARDS, JACK COWAN, VIRGINIA O'DELL, ELOISE MCNEW, BILL THOMAS, DELILAH LOWE.

BOTTOM ROW: ELLEN ROLLINS, ALVIN COMBS, CAROLYN COWAN, LOIS REMSON, MARVIN DISHNER, JANE DEVAULT.





TOP ROW: MARY ELLEN DAVIS, TED DAVIS, BETSY SUTHERLAND, HARRIET HAMMER, BERNARD PETERS, MARY LYNN BABB.

BOTTOM ROW: MARGARET McCARY, WADE FOSTER, ELEANOR KEEBLE, MARY JANES, SAM DYKES, LOIS CALHOUN.

JUNIOR CLASS

TOP ROW: DORIS KEESLING, CLYDE RAIDER, NELL CROCKETT, DORIS BEWLEY, WINFIELD STICKLEY, ELIZABETH HOUSER.

BOTTOM ROW: MARGARET PHILLIPPI, FRANK NIDIFFER, ELIZABETH THOMAS, LOUISE VAUGHT, RIDDICK McANGE, PEGGY FLETCHER.





TOP ROW: HELEN FRANCES STOVER, WILLIAM SNODGRASS, SUE ROGERS, KATHERINE BONDURANT, DUANE CALHOUN, SARAH ELIZABETH EPPERSON.

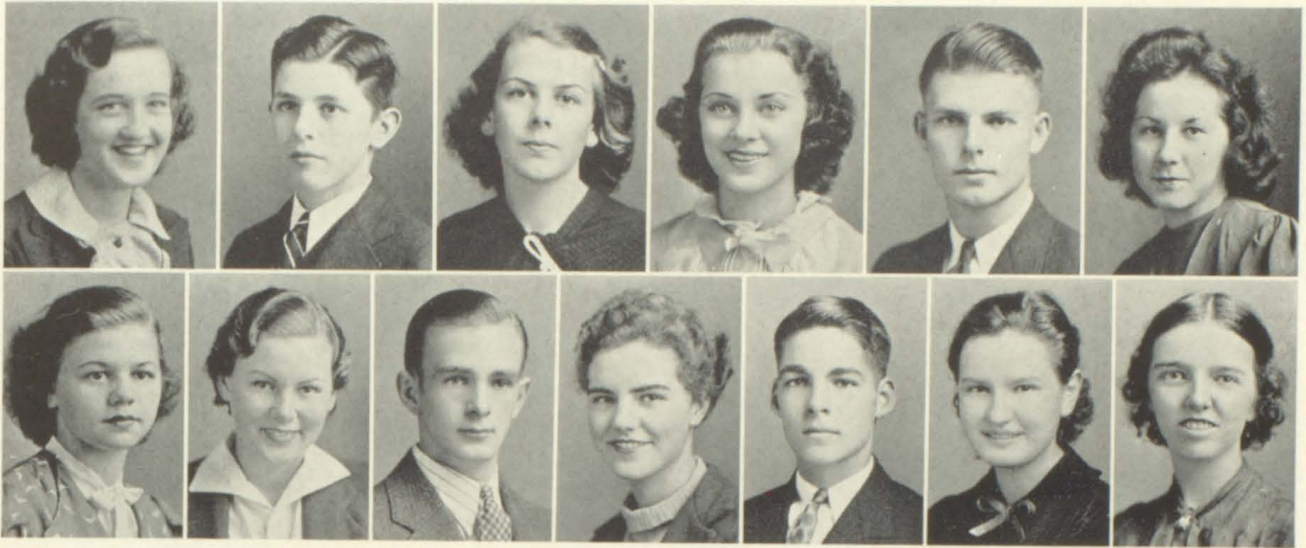
BOTTOM ROW: ELIZABETH HAWK, NEAL SMITH, ELEANOR KEEBLE, FRANCES QUILLEN, FRED EVERETT, DOROTHY MCCLELLAN.

JUNIOR CLASS

TOP ROW: JEAN WOLFE, CONLEY COWAN, SUE YANCY, DOROTHY MCGHEE, FRANK DEFRIECE, JEWELL FAIDLEY.

BOTTOM ROW: ALMA SIMMONS, ROY HENNINGER, CLAIRE EVELYN BOYD, MARGARET ANDERSON, BEN GOODMAN, FRANCES PAIR.





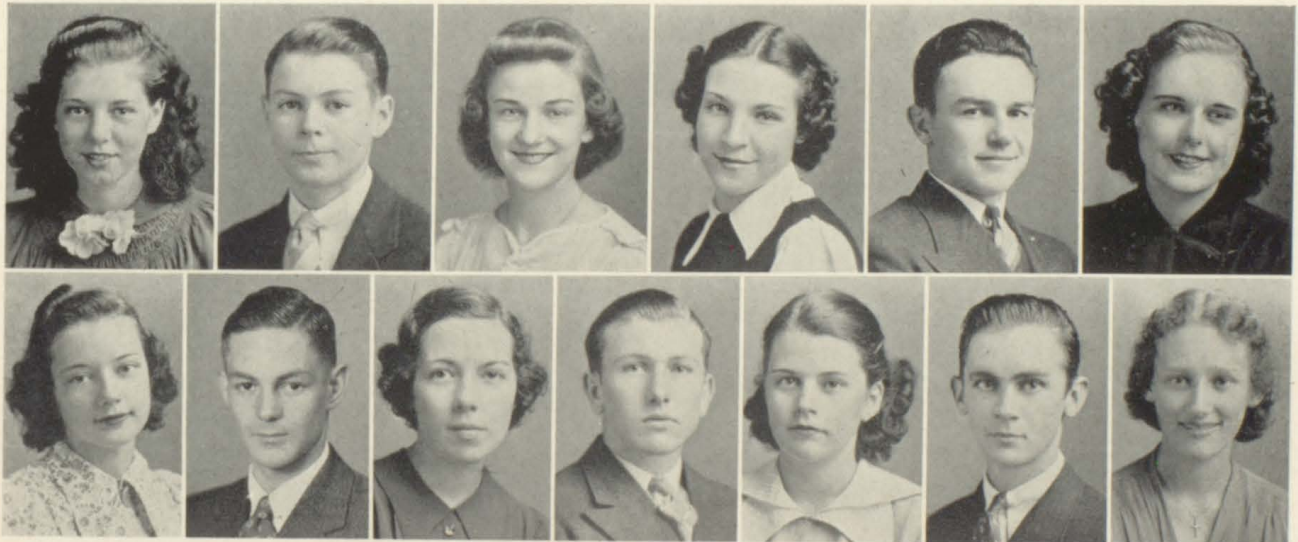
TOP ROW: ELEANOR ROBERTS, DAVID MCKEE, VIRGINIA ASHE, WILLIEBELL MARCY, JULIAN SISLER, EVELYN CONNER.

BOTTOM ROW: CATHERINE GRAY, DOROTHY BAKER, GEORGE LEGG, CARMEN LILLY, FRED VANCE, ADELAIDE MAHONEY, ANN WAYLAND.

JUNIOR CLASS

TOP ROW: MARY ALICE MOTTERN, ED WHITEAKER, KATHERINE BUSH, GAYNELLE FLEENOR, CHARLES COFFEY, ADA LYNN HAWKINS.

BOTTOM ROW: JEAN BRISCOE, WALTER BUCKLES, MARGARET MARION, DANIEL MILLER, HUNTER JOHNSTON, JAMES COUNTS, MARTHA POST.



ΣΜΑΧΟΡΟΝΕΥΣ



ΛΕΩΣΙΩΝ



ΣΤΑΘ-ΛΕΩΣΙΩΝ



SOPHOMORE CLASS

FOURTH ROW: G. MONTGOMERY, A. FELTY, R. FAIDLEY, J. WORLEY, J. BACHMAN, M. ROSS, D. KAYLOR, W. VAN HOOK, G. UMBERGER, J. WEAVER.

THIRD ROW: K. FEAGINS, E. RUTHERFORD, C. CRENSHAW, J. GRAY, M. N. RHEA, E. CARRIER, J. McCROSKEY, P. JOHNSON, V. SMITH, B. FERGERSON, M. B. HUFF.

SECOND ROW: MISS SMITH, K. PYLÉ, B. J. BROWN, R. RAINERO, L. BUSH, M. A. TORBETT, M. A. CASSIDY, F. ARNOLD, E. HENINGER, C. HERRON, M. COLE, E. SPICER.

FIRST ROW: M. MERCER, J. VAN HOOK, I. LANE, E. ARNOLD, F. LANE, K. HILL, R. JENKINS, J. BROGLIN, M. BIBEE, J. GODSEY, J. FULWIDNER.

OFFICERS

Fall		Spring
M. B. HUFF	President	S. L. WILKERSON
R. RAINERO	Vice-President	J. WILSON
C. CRENSHAW	Secretary	R. SHINN
K. HILL	Treasurer	F. THOMAS
MISS DELLA SMITH	Sponsor	MISS DELLA SMITH

FRESHMAN CLASS

SEVENTH ROW: W. SLAGLE, R. MAUK, H. POST, B. JOHNSON, D. CATHER, J. COMBS, E. CALDWELL, N. J. KING, C. BUTTERWORTH, N. JOHNSTON, E. EPPERSON.

SIXTH ROW: B. WILLIAMS, G. ZORY, J. BARKER, B. McEWEN, E. OWEN, L. WINGARD, A. A. BIRDWELL, W. BREEDLOVE, M. F. THOMPSON, E. SIMCOX, M. DOVE.

FIFTH ROW: B. FLEMING, E. WHITEAKER, J. SMITH, M. PETER, J. BOOHER, A. OVERTON, K. SWINEY, L. SMITH, K. MORTON, K. THOMAS.

FOURTH ROW: D. PARISH, D. REEVES, J. WOLFORD, G. WOOD, B. HARROP, L. WATSON, M. WINGARD, H. DAY, J. DUTTON, W. CARRIER.

THIRD ROW: W. LOUDY, M. E. WAMPLER, P. CARNEHAN, M. McCARY, R. LISANBY, E. McCLELLAN, M. POWER, D. DECK, D. NEAL, R. MILBURN.

SECOND ROW: C. PETERS, B. F. RUTHERFORD, B. WYATT, D. MASSENGILE, J. BREEDING, B. COX, C. SMITH, D. COFFEY, C. McEWEN, B. TURNER.

FIRST ROW: B. KESTNER, B. CAMPBELL, D. CATHER, E. SOLOMON, V. CARRIER, M. COLLINS, A. FELTY.

OFFICERS

Fall		Spring
A. SPARGER	President	A. KING
B. TURNER	Vice-President	D. MASSENGILL
J. SMITH	Secretary	N. KING
M. PETERS	Treasurer	B. KESNER
D. COFFEY	Sergeant-at-Arms	S. MARTIN
MR. ELMER SOLOMON	Sponsor	MR. ELMER SOLOMON

SUB-FRESHMAN CLASS

SEVENTH ROW: C. BROWN, D. WATSON, C. SWINEY, J. AKINS, B. WILKERSON, B. NICKAR, B. HAMMER, H. REARDON, P. O'DELL, B. McMILLAN, C. ROCKETT.

SIXTH ROW: C. CROSS, H. BARGER, P. CLEAR, R. VANCE, J. L. BOILING, A. SMITH, L. JONES, R. BOYD, J. REEL, S. INGRAM, C. GRAY.

FIFTH ROW: A. JACKSON, L. JARR, F. HARKLEROAD, N. GENTRY, F. SHERMAN, M. GLOVER, P. RHEA, W. THOMAS, E. COMBS, D. STICKLEY.

FOURTH ROW: G. BUCKLES, V. BABB, I. OPUM, M. R. VANCE, L. WARREN, M. HULSEY, S. GRIMMS, D. NEEL, V. LYNCH, I. MILLER, G. WINBARGER, C. O'DELL.

THIRD ROW: B. J. SHERWOOD, B. JANES, A. LOGAN, J. BAUMGARDNER, M. E. LESLIE, L. HUNTS, E. LOGGAN, L. HODGES, F. SHANKEL, L. MOORE, D. ARNOLD, S. WOLFORD, J. ALLEN, S. VANCE, E. BOWERY.

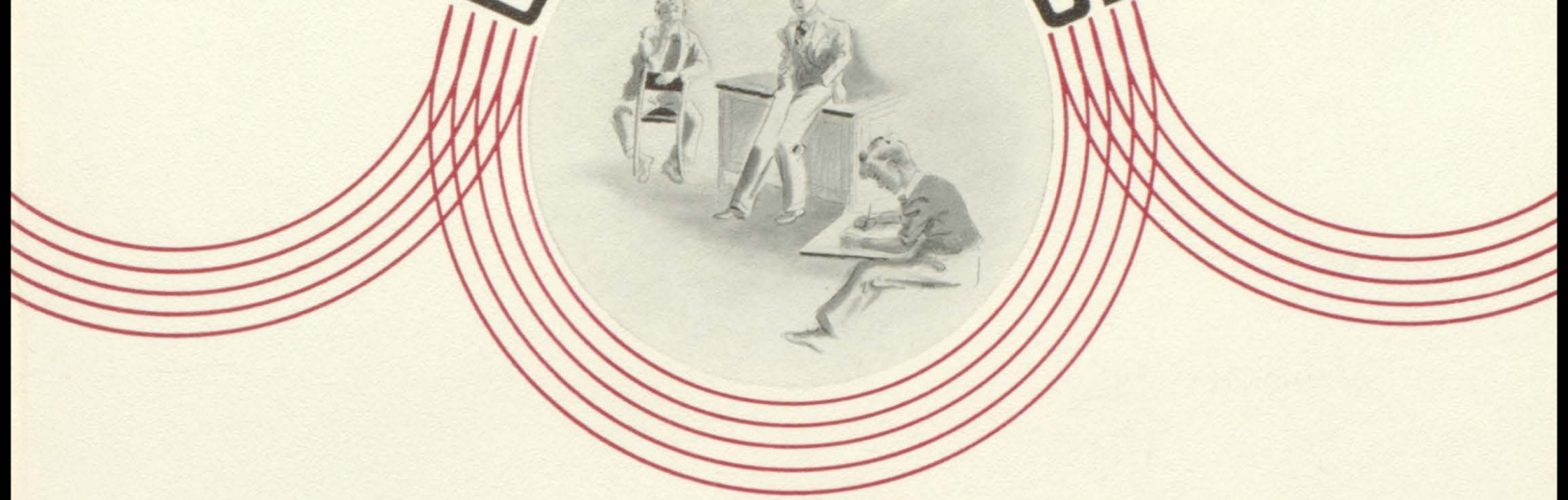
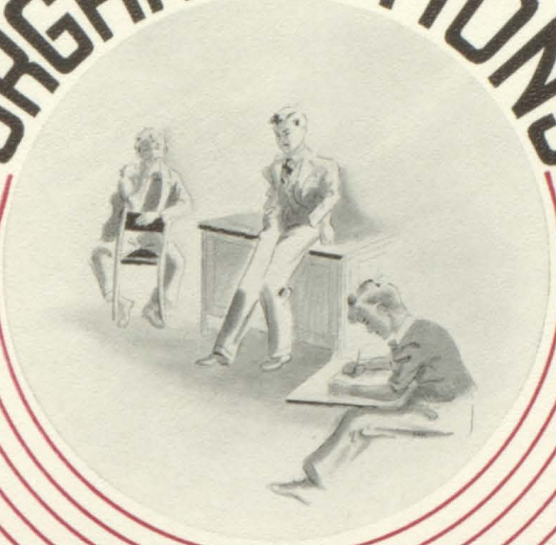
SECOND ROW: K. ROBERTSON, W. OWEN, R. BOUTON, A. SMITH, G. STANSBERRY, E. BLEVINS, A. SLUSS, A. ADAMS, W. McDONALD, M. J. CRANSHAW, L. BEATY, T. WAYLAND, B. RINGLEY.

FIRST ROW: E. ESSER, N. PYLE, M. NETHERLAND, M. MORLEY, R. E. McCLELLAN, L. DULANEY, J. RINGLEY, B. RUTHERFORD, S. LEE, L. HAGY, K. MCGHEE, B. J. LANE, G. DOVE.

OFFICERS

Fall		Spring
D. STICKLEY	President	J. SMYTHE
C. GRAY	Vice-President	M. J. HULSEY
LOIS BEATY	Secretary	H. RAY
P. O'DELL	Treasurer	E. COMBS
MISS LUCILE WYMAN	Sponsor	MISS LUCILE WYMAN

ORGANIZATIONS



CONFER

SHILL

LOT

—

COM

UOHOZ-ROH-DEE



ROWE DRIVER



MR. BERNEY BURLESON
SPONSOR



GERALD CLARK

UOHOZ-ROH-DEE



WM TREADWELL
PHOTOS



RUTH BACHMAN
LITERARY



LAVERNE RIDDLE
LITERARY



JAMES COUNTS
ART



MARK RICHARDS
BOYS' SPORTS



EDITH McCROSKEY
LITERARY



LOIS TRAMMEL
SECRETARY



RIDDICK McANGE
SNAPS



DOROTHY COUNTS
TYPIST



JACK COWAN
ART



RUTH STEPPE
GIRLS' SPORTS



HAZEL WHITAKER
TYPIST

Г-ОЗСО - HZMOC-WS



М-Н-IE OZD ZOOOZDZ



ΛΕΩΣΙΟΙ ΙΟΖΜΩΤ
ΩΣΓΟ ΟΙΔΩ



Γ-ΟΖΟΟ ΓΔΩΣΔΩ-Ζ-
-Ζ-ΩΔΣΔΩΔΙ ΟΟΖΟΖ-



ᑲᑲ-ᑲᑲᑲᑲᑲ ᑲ-ᑲᑲᑲᑲ



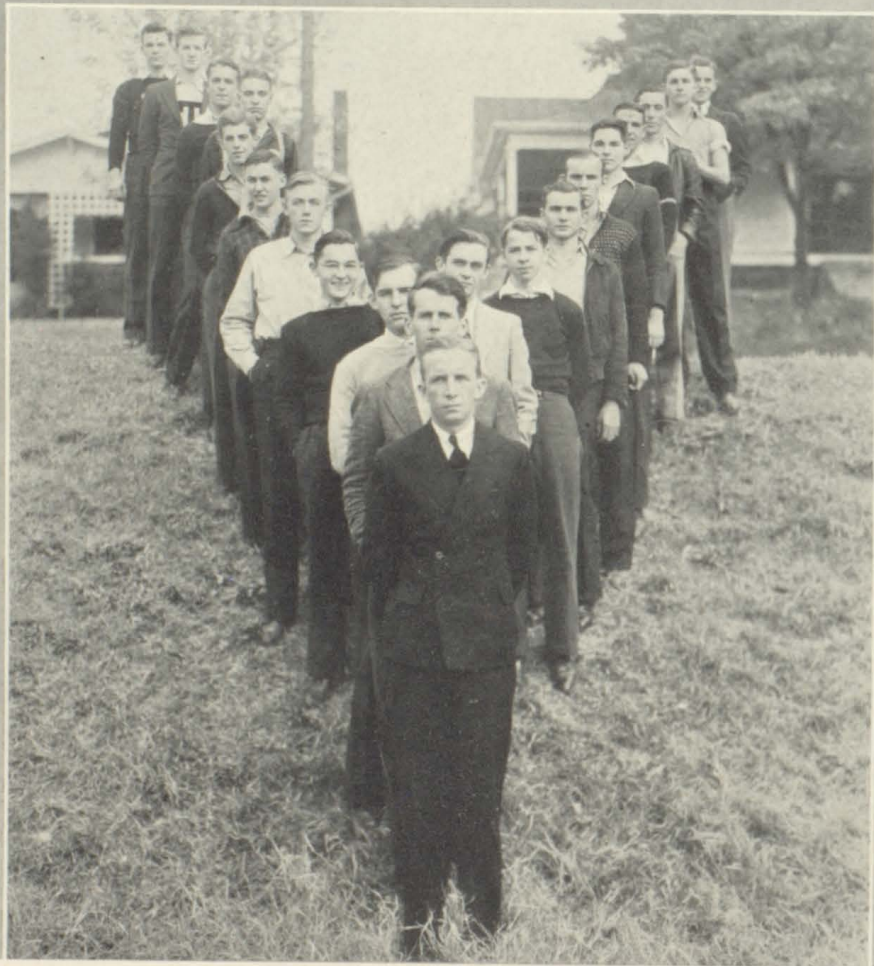
ᑲᑲᑲ ᑲᑲ-ᑲᑲᑲᑲᑲ



GIRLS' H-I-Y



BOYS' H-I-Y



Т - О Г Д О



О Г Д О
Т - О Г Д О



GIRLS' HI-Y

FOURTH ROW: C. RIDDLE, C. COWAN, H. HAMMER, A. BACHMAN, L. DROKE, L. V. RIDDLE
THIRD ROW: J. O'DELL, K. BONDURANT, L. TRAMMELL, E. HAGEY, E. FLEMING, G. FLEENOR
SECOND ROW: M. MILLER, C. LILLEY, D. KEESLING, E. STONE, M. HENSLEY, H. WHITEAKER, D. BEWLEY
FIRST ROW: E. S. THOMAS, R. BACHMAN, E. McCROSKEY, H. JOHNSTON, A. MAHONEY, K. BUSH, D. COUNTS, K. KING, D. SAYLES

OFFICERS

Fall		Spring
E. S. THOMAS	President	A. BACHMAN
D. SAYLES	Vice-President	A. MAHONEY
L. V. RIDDLE	Secretary	E. HAGEY
C. RIDDLE	Treasurer	D. SAYLES
Mrs. MARY MARNEY	Sponsor	Mrs. MARY MARNEY

"T" CLUB

FIFTH ROW: J. WORLEY, W. STICKLEY, H. MORRELL, E. ESSER, E. SOLOMON, B. TREADWELL
FOURTH ROW: H. SMITH, S. INGRAM, M. COLLINS, B. THOMAS, J. PEOPLES, J. NEWTON
THIRD ROW: M. RICHARDS, K. MESSEROLE, T. SLACK, V. CARRIER, F. NIDIFFER, A. PEOPLES, J. NEEL, F. T. CARRIER
SECOND ROW: F. VANCE, H. PHIPPS, J. HAWKINS, H. SNODGRASS, D. OWEN, G. CLARK
FIRST ROW: H. WHITEAKER, L. TRAMMELL, C. LILLEY, R. BACHMAN, A. MAHONEY, M. McCRARY, A. L. HAWKINS
SPONSORS: MISS LUCILLE WYMAN, MR. E. E. SOLOMON, MR. EDWARD ESSER.

STUDENT COUNCIL

THIRD ROW: A. FAIVRE, R. DRIVER, J. KESNER, H. THOMPSON
SECOND ROW: F. VANCE, H. PHIPPS, G. CLARK, K. MESSEROLE, B. TREADWELL
FIRST ROW: E. FLEMING, M. POST, E. S. THOMAS, A. SPARGER, M. B. HUFF, E. ROBERTS

MAROON AND WHITE

FOURTH ROW: A. FAIVRE, J. NEAL, H. THOMPSON, A. COMBS
THIRD ROW: R. RAINERO, A. MAHONEY, R. BACHMAN, D. MCGHEE, L. V. RIDDLE, D. COUNTS
SECOND ROW: K. CARSON, C. COWAN, H. HAMMER, L. DROKE
FIRST ROW: K. PYLE, E. ROLLINS, S. E. EPPERSON, A. BACHMAN, C. HOLLOWAY

OFFICERS

Editor-in-Chief	A. FAIVRE
Assistant Editor	A. MAHONEY
Managing Editor	D. MCGHEE
Sponsor	MISS BESS BROCE

FRENCH CLUB

SIXTH ROW: H. MORRELL, R. McANGE, D. BOY, G. CLARK, H. SMITH, B. TREADWELL, K. MESSEROLE, H. SNODGRASS, F. NIDIFFER
FIFTH ROW: J. CAWOOD, T. DAVIS, W. STICKLEY, J. NEEL, W. BUCKLES, F. DEFRIECE, M. ABERCROMBIE
FOURTH ROW: B. PETERS, N. SMITH, J. PEOPLES, H. PHIPPS, J. COWAN, J. KESTNER, E. WHITEAKER, H. SMITH, L. CARRIER, C. FULWIDER, C. GRAY
THIRD ROW: M. SPINKS, E. FLEENOR, E. CALLAHAN, D. LOWE, J. CLAYMAN, M. MARION, E. ROBERTS, D. KEESLING, M. A. MOTTERN, J. DeVAULT, D. BAKER, E. S. THOMAS
SECOND ROW: C. RIDDLE, R. BACHMAN, L. RIDDLE, G. FLEENOR, V. O'DELL, M. JANES, J. WOLFE, E. CONNER, A. WAYLAND, M. L. BAEB, K. BONDURANT, D. RUTHERFORD
FIRST ROW: E. ROLLINS, S. E. EPPERSON, H. F. STOVER, F. QUILLEN, H. HAMMER, C. COWAN, A. N. DRYDEN, A. BACHMAN, E. FLEMING, M. POST, E. HAGY, D. COUNTS, D. MCGHEE
SPONSOR: MRS. ANNIE NEELD DRYDEN

INTRAMURAL COUNCIL

FOURTH ROW: H. PHIPPS, J. GODSEY, M. B. HUFF
THIRD ROW: E. STONE, M. McCARY, E. OWEN, M. PHILLIPPI
SECOND ROW: M. McCARY, C. LILLY, E. McCLELLAN
FIRST ROW: A. L. HAWKINS, L. WYMAN, R. STEPPE, M. BLEVINS

OFFICERS

Spring		Fall
A. L. HAWKINS	Manager	A. L. HAWKINS
R. STEPPE	Assistant Manager	R. STEPPE
L. WYMAN	Sponsor	L. WYMAN

DRAMATIC CLUB

FIFTH ROW: E. McCROSKEY, D. KEESLING, C. LILLEY, E. ROBERTS, C. RIDDLE
FOURTH ROW: H. WHITEAKER, D. BAKER, M. ANDERSON, M. L. BABB, M. MILLER
THIRD ROW: G. STANSBERRY, D. BEWLEY, A. SIMMONS, V. O'DELL, K. BUSH, D. COUNTS, M. SPINKS
SECOND ROW: D. RUTHERFORD, F. LANE, E. ROLLINS, C. COWAN, H. HAMMER, G. FLEENOR, S. E. EPPERSON, F. QUILLEN
FIRST ROW: G. G. GILLINGHAM

OFFICERS

Fall		Spring
E. ROBERTS	President	A. MAHONEY
H. HAMMER	Vice-President	E. ROBERTS
E. McCROSKEY	Secretary	C. LILLEY
G. FLEENOR	Treasurer	K. KING
MR. G. G. GILLINGHAM	Sponsor	MR. G. G. GILLINGHAM

DEBATE CLUB

SECOND ROW: G. CLARK, R. DRIVER, S. BEARD, E. WHITAKER, J. WILSON
FIRST ROW: G. DOVE, B. TURNER, C. CALDWELL, R. KELLY, L. CALHOUN, S. BAUMGARDNER

OFFICERS

Fall, '37		Spring, '38
C. CALDWELL	President	R. KELLY
E. WHITAKER	Vice-President	C. CALDWELL
R. DRIVER	Secretary	R. DRIVER
R. KELLY	Treasurer	S. BAUMGARDNER
GEORGE DOVE	Sponsor	GEORGE DOVE

PUBLIC SPEAKING CLUB

FOURTH ROW: M. B. HUFF, B. FERGUSON, J. McCROSKEY, J. GODSEY
THIRD ROW: L. TRAMMELL, K. PYLE, L. BUSH, R. RAINERO, E. RUTHERFORD
SECOND ROW: H. POST, K. KING, W. BREEDLOVE, N. J. KING, M. F. THOMPSON, MRS. CALDWELL, Sponsor
FIRST ROW: B. J. BROWN, M. POST, C. CRENSHAW, C. McEWEN

OFFICERS

Fall		Spring
M. POST	President	M. B. HUFF
C. CRENSHAW	Vice-President	M. POST
B. J. BROWN	Secretary	B. J. BROWN
C. McEWEN	Treasurer	B. FERGUSON
MRS. GENEVIEVE CALDWELL	Sponsor	MRS. GENEVIEVE CALDWELL

ALCHEMIST CLUB

READING FROM LEFT TO RIGHT: F. QUILLEN, H. F. STOVER, S. E. EPPERSON, C. COWAN, A. BACHMAN, M. MILBURN, M. JANES, P. KENSINGER, L. CARRIER, W. SNODGRASS, N. SMITH, J. KESTNER, B. GOODMAN, C. FULWIDER, H. THOMPSON, W. BUCKLES, H. WHITEAKER, L. DROKE, L. TRAMMELL, K. KING, K. BUSH, D. RUTHERFORD, E. ROLLINS
IN THE CENTER: G. FLEENOR, D. SMITH, J. WOLFE

OFFICERS

Fall		Spring
J. KESTNER	President	K. KING
W. BUCKLES	Vice-President	H. THOMPSON
A. BACHMAN	Secretary	C. COWAN
K. BUSH	Treasurer	K. BUSH
C. FULWIDER	Sergeant-at-Arms	H. F. STOVER
MISS DELLE SMITH	Sponsor	MISS DELLE SMITH

BOYS' HI-Y

H. SMITH	B. HAGY
H. PHIPPS	B. TREADWELL
B. THOMAS	B. BIXBY
W. C. HARDIN	F. NIDIFFER
K. MESSEROLE	F. VANCE
C. CALDWELL	J. NEWTON
W. STICKLEY	R. RADER
J. COWAN	B. COWAN
M. RICHARDS	J. COUNTS
G. CLARK	
E. ESSER	

OFFICERS

Spring, '38		Fall, '37
B. COWAN	President	G. CLARK
C. CALDWELL	Vice-President	A. FAIVRE
F. VANCE	Secretary	R. DRIVER
TREADWELL	Treasurer	F. T. CARRIER
H. SMITH	Sergeant-at-Arms	M. RICHARDS
EDWARD ESSER	Sponsor	EDWARD ESSER

GLEE CLUB

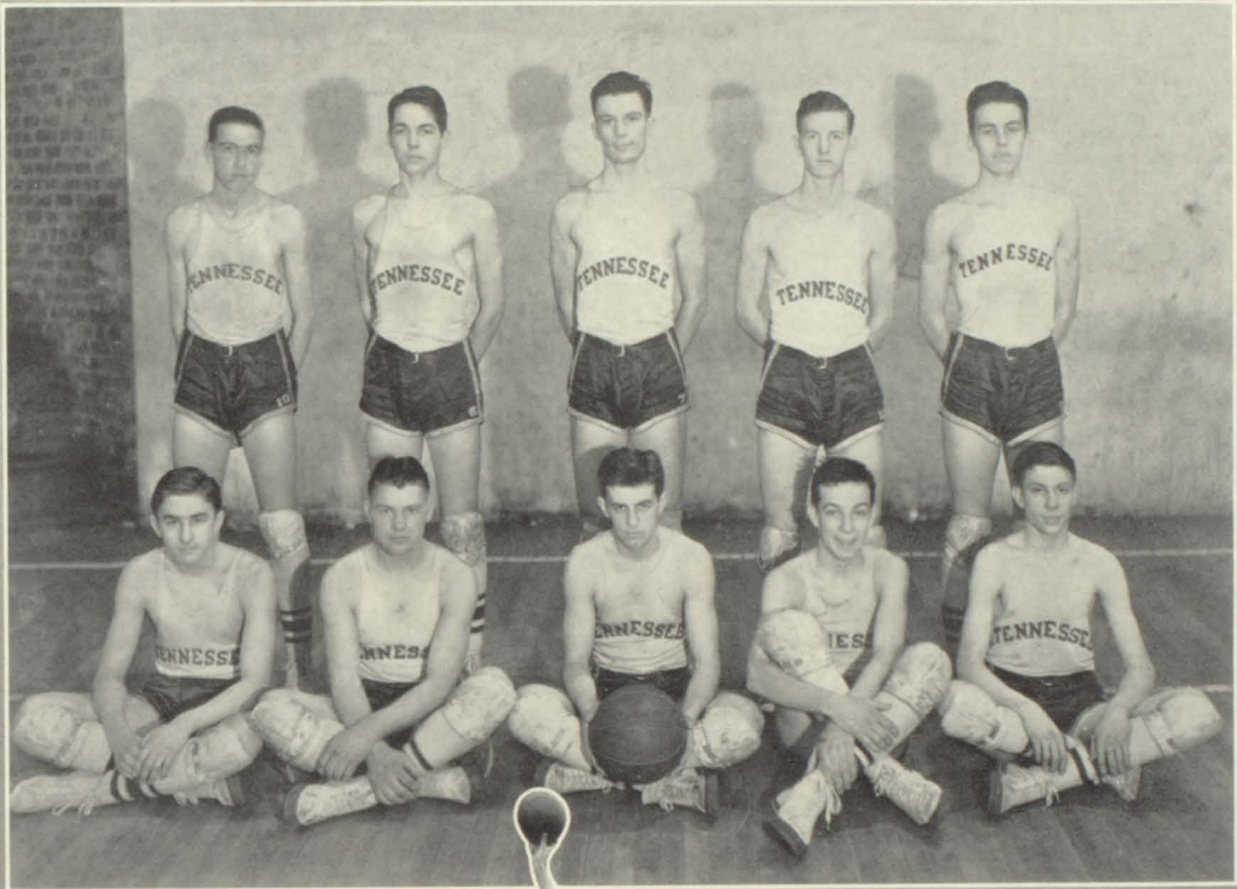
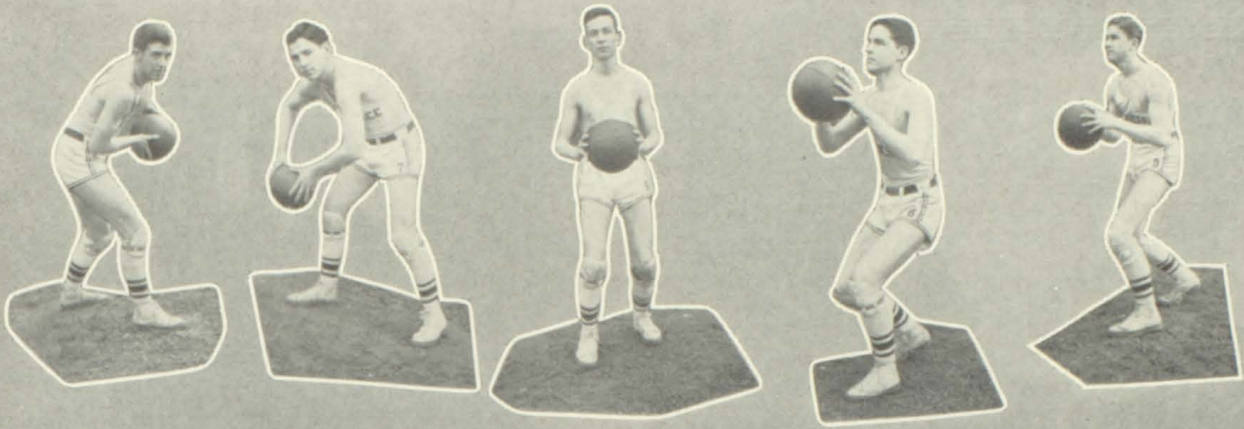
FIFTH ROW: J. W. CLAYMAN, R. KELLY, H. SMITH, L. CARRIER, J. COUNTS, H. THOMPSON, C. COFFEY
FOURTH ROW: K. BONDURANT, A. MAHONEY, E. FLEMING, D. MCGHEE, C. GRUBBS, M. BIBEE, L. SMITH, K. ROBERTS
THIRD ROW: M. E. DAVIS, V. ASH, E. CALLAHAN, J. CLAYMAN, L. VAUGHT, M. MILURN, D. NEAL, H. WHITEAKER
SECOND ROW: M. NININGER, M. MILLER, M. POST, C. E. BOYD, K. CARSON, E. FLEENOR, K. KING, D. LOWE, L. V. RIDDLE, M. MARNEY
FIRST ROW: A. LEONARD, F. QUILLEN, D. BLEVINS, N. KING, L. DROKE, E. STONE, E. HAGY, D. SAYLES, E. MCCROSKEY **FRONT:** C. JOHNSON

OFFICERS

Fall		Spring
E. FLEMING	President	H. THOMPSON
A. MAHONEY	Vice-President	A. COMBS
M. POST	Secretary	C. E. BOYD
R. KELLY	Treasurer	R. HAGAN
H. SMITH and J. COUNTS	Sergeant-at-Arms	R. KELLY
SPONSORS: C. A. JOHNSON, MISS MARGARET NININGER, MRS. MARY MARNEY		

ATHLETICS





BASKET-BALL

TOP: K. MESSEROLE, J. PEOPLES, J. WORLEY, F. VANCE, B. TREADWELL

BOTTOM: H. PHIPPS, M. COLLINS, F. NIDIFFER, A. PEOPLES, H. MORRELL

BASKET-BALL SUMMARY

The Tennessee High basket-ball season started with a bang when Coach Solomon officially commanded the helm of the Viking ship. Veterans such as Harry Phipps, "Doc" Messerole, and Hartsell Morrell, along with many willing newcomers, quickly developed into an aggressive team of ten competent players. At the first of the season, two of last year's lettermen who had not graduated were lost to the squad, these being Jim Hawkins and Tucker Smith.

On December 3, the Viking ship set sail against Mountain City with Captain Messerole taking the lead on the defense and Hartsell Morrell, Frank Nidiffer, and Fred Vance starring on the offense. The boys took the first game of the season by 58 to 26.

The Viking ship struck a snag in being sunk by Blountville twice in succession by the score of 19 to 21 on December 6, and 22 to 29 on December 11.

The boys fought back up into the ranks on December 13 when they defeated Bluff City on the opponent's court by 29 to 24, but dropped the next game to the same opponent on the home court by 26 to 28.

The Vikings journeyed across the mountains to defeat Mountain City to the tune of 31 to 35.

Starting the new year right, the Vikings won their second successive game by defeating the Erwin Blue Devils on our home court by 29 to 20.

On January 8 the Vikings dropped a close decision to Washington College. Even in defeat, the Vikings played their best game of the season. The team worked with the precision and smoothness which Solomon developed and which brought home the trophy from the state tournament at Milan last year.

The big Maroon team sought revenge on the courts for the bitter defeat dealt on the gridiron by Elizabethton. It took the game by the wide margin of 51 to 20, outplaying the Betsy team throughout the setto.

The Knoxville High Trojans were given a taste of the Tennessee High spirit, but they took the game by 50 to 26.

The boys then left the home court, dropping a hard-fought game to Johnson City 40 to 41. The offensive stars were Morrell, third in line of the Morrell Brothers, Morris Collins and Fred Vance.

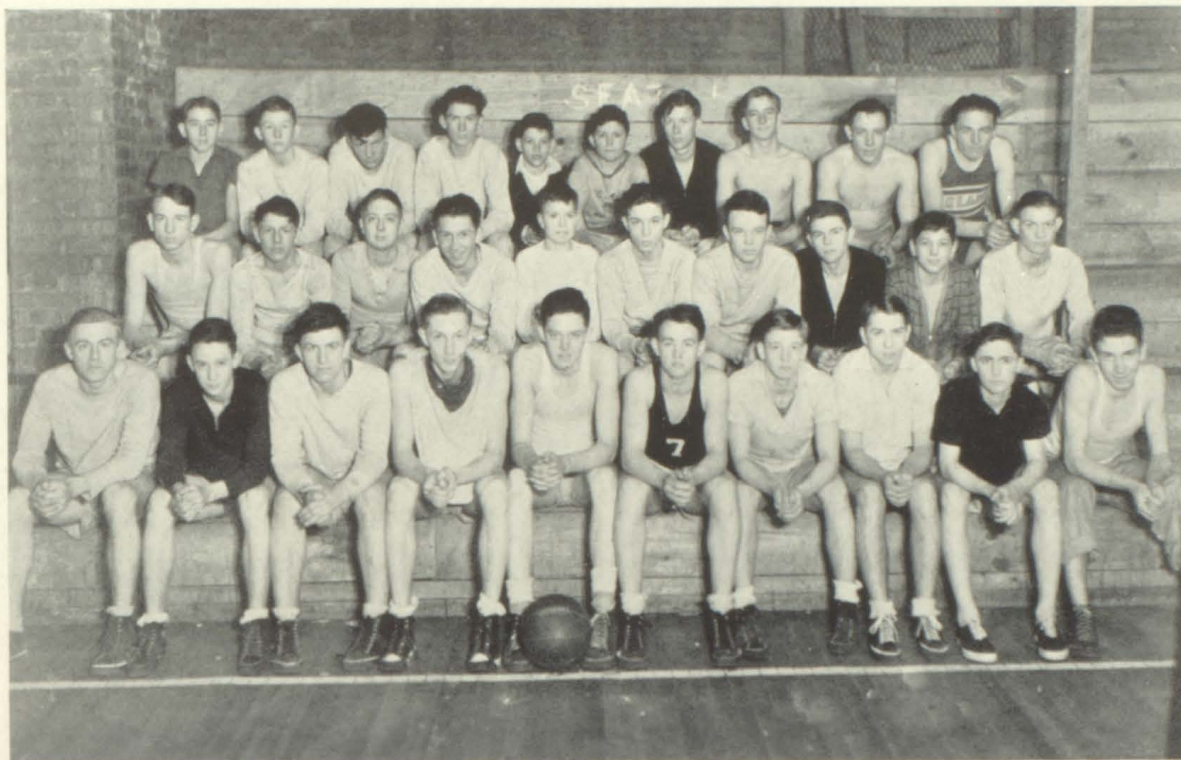
To complete the well-begun task, the Viking team wrote finis on the slower Elizabethton squad by the overwhelming score of 46 to 14.

On January 28, the Vikings met their seventh defeat of the season by losing to Morristown 30 to 31, but the following night revived by defeating Rogersville by 42 to 22.

Starting the month of February inaccurately, the boys lost the first game of the month to Erwin on their home court by 25 to 32.

Smarting from the defeat three nights hence, the Vikings took the floor at the adopted gym at King College. Aided by the Peoples brothers they took the Virginia Bearcats by an overwhelming score, concluding a very successful season.

After the close of the regular season, the Viking ship sailed through the district tournament at Kingsport by defeating Watauga, thereby winning the consolation trophy.



JUNIOR VARSITY BASKET-BALL SQUAD

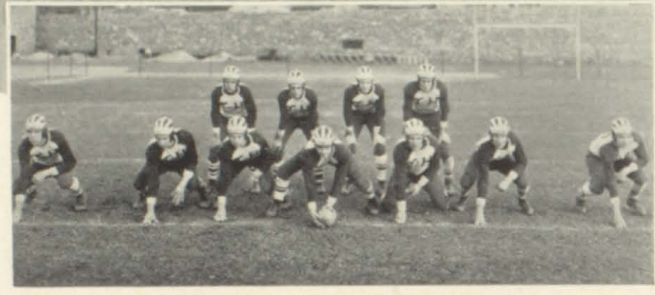
THIRD ROW: B. CONNER, B. FLEMING, B. CAMPBELL, B. WYATT, T. GRAY, J. FURGE, B. F. RUTHERFORD, D. HAWK, V. CARRIER, M. ROSS

SECOND ROW: A. COMBS, K. MCGHEE, W. SLAGLE, R. FAIDLEY, B. J. LANE, D. MASSENGILL, J. WORLEY, D. WHITE, W. GRAY, C. SMITH

FIRST ROW: W. STICKLEY, R. SHINN, D. STICKLEY, H. RHEA, F. THOMAS, C. SMITH, C. GRAY, B. COWAN, J. SMYTHE, D. BOYD

BASKET-BALL SCHEDULE

Dec. 3—Here	Mountain City	26	Tenn.	58
Dec. 6—There	Blountville	21	Tenn.	19
Dec. 11—Here	Blountville	29	Tenn.	22
Dec. 13—There	Bluff City	24	Tenn.	29
Dec. 18—Here	Bluff City	28	Tenn.	26
Jan. 3—There	Mountain City	31	Tenn.	35
Jan. 7—Here	Erwin	20	Tenn.	29
Jan. 8—There	Wash. College	32	Tenn.	30
Jan. 14—There	Elizabethton	20	Tenn.	51
Jan. 15—Here	Knoxville	50	Tenn.	26
Jan. 21—There	Johnson City	41	Tenn.	40
Jan. 22—Here	Elizabethton	14	Tenn.	46
Jan. 28—Here	Morristown	31	Tenn.	30
Jan. 29—Here	Rogersville	22	Tenn.	42
Feb. 1—There	Erwin	32	Tenn.	25
Feb. 4—Here	Va. High	16	Tenn.	41
Feb. 10—Here	Johnson City	27	Tenn.	26
Feb. 11—There	Kingsport	31	Tenn.	36
Feb. 14—There	Morristown	31	Tenn.	15
Feb. 18—There	Knoxville	31	Tenn.	20
Feb. 19—There	Rogersville	21	Tenn.	18
Feb. 21—There	Va. High	20	Tenn.	23
Feb. 25—Here	Kingsport	22	Tenn.	36
Feb. 26—Here	Wash. College	48	Tenn.	24



COACH SOLOMON

FOOTBALL



- B. THOMAS
- H. PHIPPS
- J. HAWKINS
- F. VANCE
- H. SMITH
- M. RICHARDS
- D. OWEN
- J. NEWTON
- K. MESSEROLE
- V. CARRIER
- G. CLARK

FOOTBALL SCHEDULE

Sept. 17—Here	Big Stone Gap	6	Tennessee	34
Sept. 24—Here	Erwin	20	Tennessee	12
Oct. 8—There	Johnson City	13	Tennessee	12
Oct. 15—Here	Greeneville	0	Tennessee	25



FOOTBALL

COACH ESSER

M. COLBERT

F. EVERETT
R. KOONTZ

A. COMBS

B. BIXBY

B. TREADWELL

C. CROSS

F. NIDIFFER
W. STICKLEY

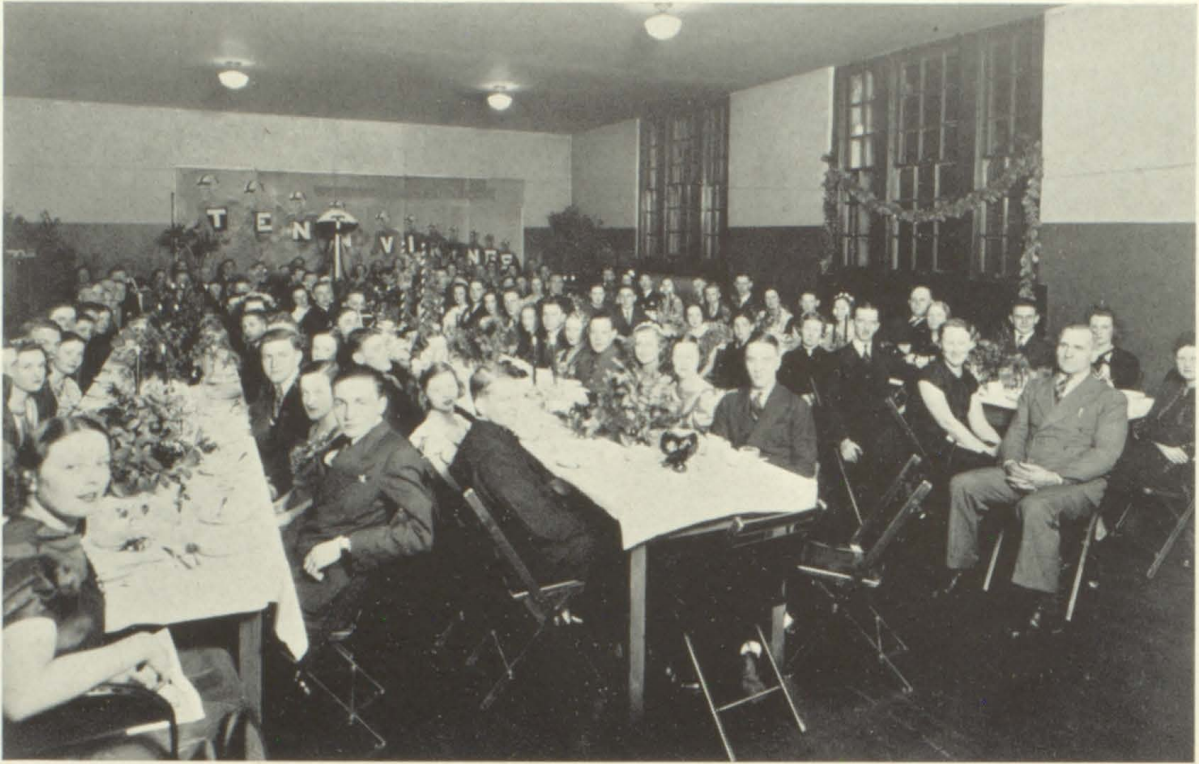
D. STICKLEY

M. COLLINS

Oct. 22—There	Elizabethton	38
Oct. 29—There	Abingdon	7
Nov. 5—Here	Kingsport	51
Nov. 12—There	Morristown	51
Nov. 19—Here	Virginia High	6
	Total	191

Tennessee	0
Tennessee	21
Tennessee	6
Tennessee	13
Tennessee	26
	Total
	149





FOOTBALL SUMMARY

The annual football banquet climaxed the 1937 Viking football season that was well-launched by the first of September. Under the close guidance of Coach Solomon and his very capable assistant, Coach Esser, the green squad was quickly whipped into shape. Despite the loss of many lettermen, the prospects for the season seemed promising.

The first day of the series of games dawned on September 17 and saw the brilliant pass-interceptions of Captain Clark and other wide-awake backfield men roll up a huge total of points against Big Stone Gap.

Next week the big Maroon team, despite the spark-plug work of Collins, fell before the spirited Blue Devils from Erwin.

After two weeks' rest the team journeyed to Johnson City, battled with a team that fought with spirit and determination equal to Tennessee High's. Despite the excellent passing of "Doc" Messerole, the boys lost.

Set for revenge, the Vikings met Greeneville on the home ground. Due to the Coach's past relations with the opposing team the boys went wild with Bill Thomas leading the offense and smothered the lighter team.

The boys next invaded a powerhouse in the form of Elizabethton. The linesmen, led by Vivian Carrier and Doug Owen, played a fine defensive game the first half, holding the more experienced 'Betsy to a slim lead for the first half. The Vikings, disturbed by the injuries of Thomas, Phipps, and Richards, went to pieces in the last half and were defeated.

Bitter from the defeat of the previous week, the Vikings went to Abingdon and by the splendid work of Nidiffer, Vance, and Jim Newton on the offense, and Capt. Hawkins and W. Stickley on the defense, the boys returned home victorious.

The two following weeks saw the Vikings relapse and taste the most bitter defeat of the season at the hands of Kingsport. The team also dropped its game to Morristown. Most of the boys journeyed on to Knoxville to see a game Saturday which seemed to put them back in the fighting spirit.

Having prepared for that arch-enemy, Virginia High, the players and supporters of both teams were disappointed by weather squalls which postponed the traditional feud until Monday. That day loomed as a perfect one for the football players even though it was a bit brisk for the people in the stands. The Viking team clicked just a little better and the boys stayed in a somewhat better spirit. Also the rugged defensive abilities displayed by Capts. Clark and Hawkins, and the well-planned offensive attack called by Harry Phipps, enabled the Maroons to a conquest.

The gridiron greats who were graduated are: Clark, Hawkins, Messerole, Phipps, Smith, Richards, Treadwell, Bixby, and Combs. These boys leave the school with the regret that they won't be in the Viking ship next fall which will be skippered by Jim Newton and Bill Thomas.



MISS WYMAN
COACH



BASKETBALL



ADA LYNN HAWKINS
MANAGER



MILDRED McCARY
TENNIS



CHAMPIONSHIP KICKBALL
TEAM



HELEN PHIPPS
BASEBALL



CHAMPIONSHIP VOLLEY BALL
TEAM



MARGARET PHILLIP
VOLLEY BALL



RUTH STEPPE
ASS'T. MGR.



JUNE GODSEY
KICK BALL

INTRA-MURAL HIGHLIGHTS

June, 1938, marks the end of perhaps the most successful of the seven years of intra-mural athletics at Tennessee. For the third year Miss Lucille Wyman has successfully coached our athletes.

The Council was organized with Ada Lynn Hawkins elected as Manager of Sports, and Ruth Steppe as her assistant. Attention was immediately turned to the membership of the Council, which is composed of a manager of each sport. After careful consideration, Coach Wyman, Managers Hawkins and Steppe selected the following girls as managers of each sport: Margaret Phillippi, June Godsey, Helen Phipps, Mary Betty Huff, Betsy Ferguson, Margaret and Mildred McCary, Evelyn McClellan, Edna Owen, Eileen Stone, Carmen Lilley, and Mary Blevins.

The Coaching staff also devised the point system for girls to earn letters. A large "T" is awarded to the girl who enters every sport and attains seven hundred points. Smaller letters are given to those who earn five hundred points.

The kickball season opened with enough participants to compose three teams. Games were played on Elmore Field between McCary's, Hawkins' and Steppe's teams, with supposedly-interested Sub-Freshmen boys looking on. Hawkins' team overcame Steppe's team in the championship game, with Phipps kicking a long drive down third base line that was so powerful everyone missed it.

With the coming of cold weather volley-ball made its entrance. Three teams were selected whose captains were Huff, Godsey, and Phipps. These games, supervised by Phillippi, volley-ball manager, were very interesting. Phipps' team clinched the championship by barely beating Huff's team twice and Godsey's team once. But, in the last game of the season, Godsey's team surprised everyone by soundly defeating the champions.

The Frosh basket-ball team, captained by Salley, gave a most spectacular account of itself. The Sub-Frosh team, led by Vance, showed some good basket-ball. The Sophs, who selected Grimes as their captain, gave plenty of competition. But as usual, the Junior-Senior game held the greatest attention. Lilley, who thrilled the spectators with her superb playing at guard, captained the Juniors. Stone, who also plays a good game at guard, was captain of the Seniors.

The Seniors, showing a classy defense, took this game to the tune of 19-6, and with it the basket-ball title for 1938.

The coming of warm weather moved us to the baseball diamond, where baseball aspirants took their swing at the bat. Class teams were organized under the supervision of Phipps. A round robin tournament was held and the championship team selected.

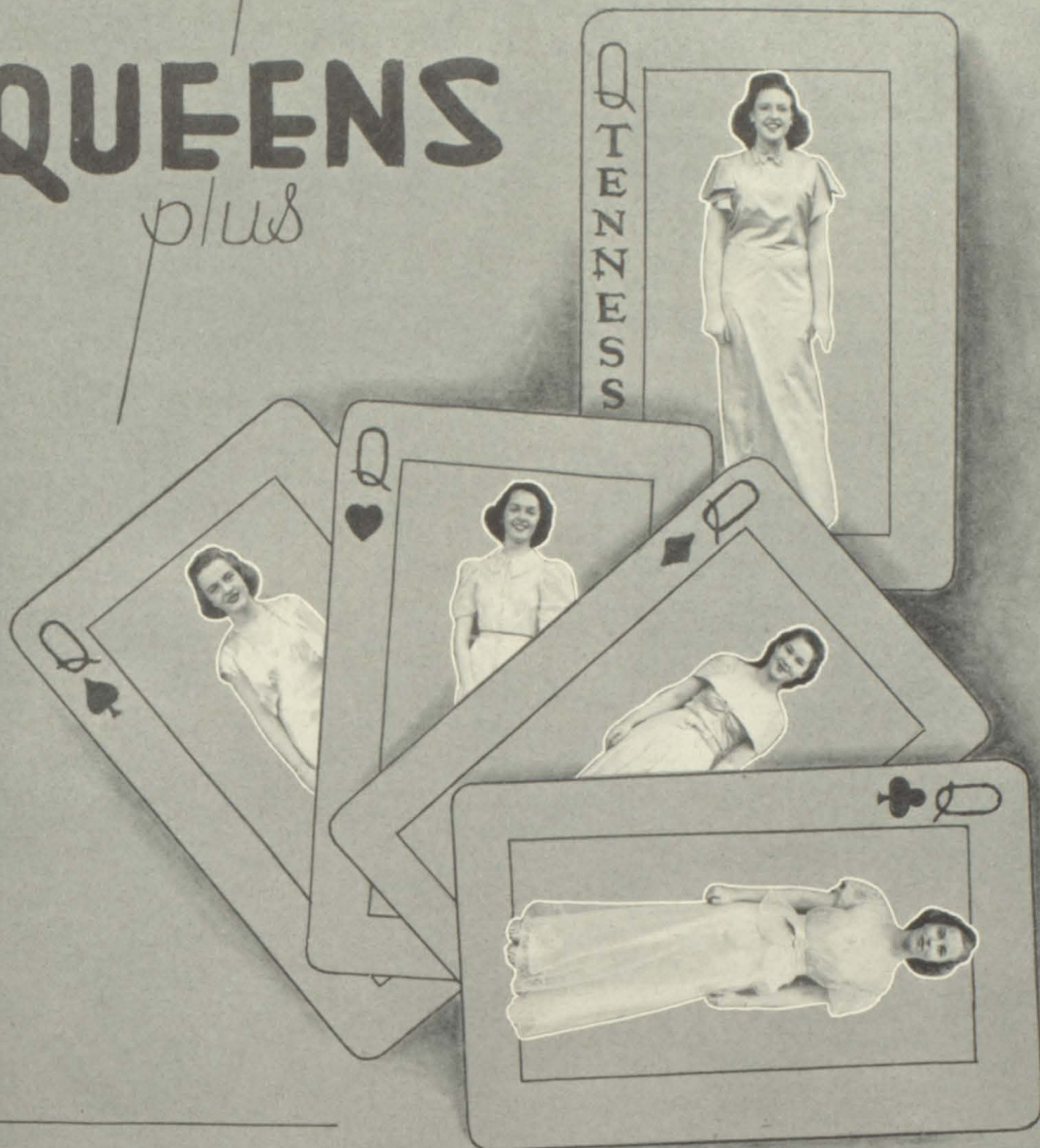
Later, tennis moved into full swing with Mildred McCary conducting class and individual tournaments.

ACTIVITIES



QUEENS

plus

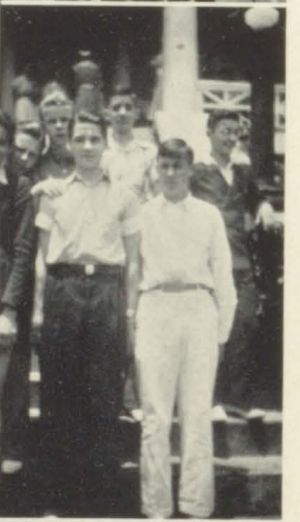


SCHOOL QUEEN

NELWYN KING

CLASS QUEENS

- ♣ SENIOR ... DOROTHY COUNTS
- ♦ JUNIOR ... ELIZABETH HOUSER
- ♥ SOPHOMORE KATHERINE HILL
- ♠ SUB-FROSH ... MARTHA JEAN HULSEY







MOST ENERGETIC
BEST STUDENT
MOST POLITE
ALFRED FAIVRE



BEST ALL-ROUND BOY
HARRY PHIPPS



BEST ALL-ROUND GIRL
EMMA SUE THOMAS



BEST LOOKING GIRL
MARILYN SPINKS



LAZIEST



CUTEST GIRL
LA VERNE RIDDLE

SENIOR STATISTICS



CUTEST COUPLE
DOT SAYLES
KENNETH MESSEROLF

RUTH BACHMAN
BEST-DRESSED GIRL
LOUDEST

MOST SCHOOL SPIRITED



RUTH STEPPE
RUTH BACHMAN

WITTIEST



CAROLYN RIDDLE



BEST DRESSED BOYS
MILTON ABERCROMBIE
WILLIAM TREADWELL
WILLIAM TREADWELL
BEST-LOOKING BOY

JUNIOR CLASS POEM

"What can life hold for us but happiness?"
We ask, eager to make the final test,
To try our Fate, to conquer trouble's horde—
We want no shield from pain, no petty rest.
The world awaits new hands to lift it from its strife,
The cry goes up as from one mighty voice,
"Go forth and wear the shield of faith in God,
And He will make the weary heart rejoice."

But yet some inner conscience holds us back,
Half born of fear, the other half of love for what we leave,
We stay awhile, uncertain yet to go,
We keep old memories; to friends we cleave.
One year to crowd with joy, and hope, and strife,
And then we'll go; reluctant though, to leave.

—ELEANOR ROBERTS.

Compliments of
FAUCETTE COMPANY

Compliments of
HECHT'S BAKERY

W. I. BOLLING MOTOR CO.
GENERAL REPAIRING

210 Moore St.

Phone 316

BRISTOL, VA.

MOORE-EARHART COMPANY
ATHLETIC EQUIPMENT AND LUGGAGE
OUTFITTERS OF SCHOOL AND COLLEGE TEAMS
647 State St. BRISTOL, VA.

CALENDAR

- Sept. 13—Feminine hearts fluttered as three new teachers made them wonder whether to spend their time in football, the band, or in English class.
- Sept. 14—Alfred auctioned second-hand books today and had a rushing business and double profit. He collected the store's fee from both the purchaser and seller.
- Sept. 15—The Subs had two lunch periods.
- Sept. 16—Cheer leaders were elected. Wonder why SOME boys don't go out for football?
- Sept. 20—Billy Treadwell said: "It doesn't hurt much for one to slip and fall on one's back in the middle of Abram's Falls; but if one happens to be carrying another one, and TWO fall on ONE'S back—it's something!"
- Sept. 21—Betsy Ferguson brought her little brown teddy-bear to school today, bless her heart.
- Sept. 22—Poor Mr. Rowe! He just couldn't get those Physics experiments to work.
- Sept. 23—What's this thing Gerald called his "love-apple"? Could it have been his adam's-apple?
- Sept. 27—Messerole's T-Model started without any coaxing.
- Sept. 28—The Chemistry class made several rather explosive mixtures today. Oh, well, we need a new school, anyhow.

MINOR'S DRUG STORE

Phone 24

HOME MADE ICE CREAM

JOE

Phone 123

610 Poplar Street

**ROGERS
GROCERY**

KING

Phone 33

900 Fifth Street

"Learn It Right"
BRISTOL COMM. COLLEGE
BRISTOL, TENN.

Compliments of
McCLISTER MUSIC CO.

Compliments of
QUALITY TAILORS

Compliments of
THE COX HAT COMPANY

Compliments of
LANE'S RESTAURANT

Compliments of
**BOSTON SHOE AND REPAIR
SHOP**

Compliments of
S. H. KRESS & CO.

Compliments of
R. J. HICKS' GROCERIES
HICKS' TURN

CALENDAR

Sept. 29—Mrs. Ferguson returned.

Oct. 1—Mr. Burns left, much to the regret of the Cadmus Club, faculty, and student body.

Oct. 5—The Student Body contributed \$31.00 and the Boys' Hi-Y, \$10.00 (out of their \$10.65) toward the Band's uniforms.

Oct. 6—The most natty looking object today was Kathryn King and her makeup. The Hi-Y must have its fun at the new member's expense.

Oct. 8—Thanks to Miss Nininger and Harry Phipps, we had a peppy pep meeting in preparation for the Johnson City game.

Oct. 11—Fred Vance ate fully ten minutes longer than anyone else at the Boys' Hi-Y stag banquet.

Oct. 12—Mr. Connelly made a talk in assembly on China.

Oct. 13—Dot Counts started giving Big Apple lessons in the office during fifth period.

Oct. 14—Where did you get the wood for tonight's pep meeting bonfire, Robert?

Oct. 15—The team satisfied Coach and the fans with a 26-0 victory over Greeneville.

Compliments of
HUNTSMAN BROS.

D. B. RYLAND CO.

JEWELERS

GIFT SHOP

WATCHES

HAMILTON—ELGIN—LONGINES

BULOVA AND GRUEN

DIAMONDS

REPAIRS

**"A Gift from Ryland's
Means More"**

COLONIAL GRILL

SEA FOODS

CHOICE WESTERN STEAKS

REGULAR DINNERS

**"Every Meal
a
Pleasant Memory"**

For Economical Transportation

For
Quality at
Low Cost
Choose

for Economical Transportation



Decide
with
A Ride

McCLURE MOTOR CO.

Phone 5122

THINK IT OVER

Your best investment next to Education is your Personal Appearance. We can help you with the latter.

BLAKLEY-MITCHELL COMPANY

CALENDAR

- Oct. 18—CADMEA drive started.
- Oct. 19—Wonder if Jimmy Hawkins ever devoted any time other than second study hall to sleeping?
- Oct. 21—Did Coach think he could get the whole team in a taxi? Maybe he meant for the manager to order a bus.
- Oct. 22—First MAROON AND WHITE was distributed. Tenn.-Betsy game postponed because of rain.
- Oct. 26—There's one thing that this writer fails to see and that is why on earth so many girls go trucking libraryward as soon as Bixby goes in. Ellen, how's about enlightening me?
- Oct. 28—Capt. Dolan, of "Noah's Ark," made a very interesting talk about the South Pole.
- Oct. 29—No school. Teachers went to meeting in Knoxville.
- Nov. 1—James Neel finally gave a dime to enroll Seniors 100% in Junior Red Cross drive.
- Nov. 3—Sub-Freshmen, and Sophomore class pictures were taken at the Stadium.
- Nov. 4—The new piano, given by the Seniors of '37 and '38, was delivered today. Had pep meeting tonight.
- Nov. 5—Out at 11:30 for dedication of McKellar Field.

» «

SEVIER'S LAUNDRY

37 Years of Laundry

Leadership

» «

Make Our Stores Your

GIFT HEADQUARTERS

» «

McCHESNEY & LESTER

» «

JEWELERS AND OPTOMETRISTS

BRISTOL, VA. and ABINGDON, VA.

FURROW ELECTRIC CO.

408 State St.

Phone 162

RESIDENTIAL—COMMERCIAL—INDUSTRIAL WIRING

"EVERYTHING ELECTRICAL"

Compliments of

J. B. DENTON and H. H. WORRELL

GROCERIES AND MEATS

19 Commonwealth Ave.

Phone 5115

Compliments of

PIGGLY-WIGGLY

"SAY IT WITH FLOWERS"

SMITH FLORAL COMPANY

Phone 523

BRISTOL, TENN.

CALENDAR

- Nov. 8—The Drugan Motor Company showed several pictures in assembly. Howard Thompson proved the good quality of the piano, but couldn't he make any piano sound good?
- Nov. 9—Mr. Rowe voiced fear that Physics experiments might be a little dull for Prof. Abercrombie, but Junior assured him that he enjoyed the class.
- Nov. 10—Freshman class elected Ann Sparger president.
- Nov. 11—Armistice Day. School was dismissed at the end of fifth period for the King-Carson Newman football game.
- Nov. 12—Glee Club presented assembly program.
- Nov. 15—The Curtis Publishing Company presented plans to the Seniors for selling magazines.
- Nov. 16—Messerole, how would you feel if you had to walk home from football practice in a basketball outfit?
- Nov. 17—From the shrieks and screams at school tonight, one would have thought a couple of necks were being broken. It was nerve-wracking to be perched on top of a rickety ladder, wasn't it, Alvin?
- Nov. 18—Mark bestowed several appropriate nicknames upon Gerald today: "Mouth," "Gas-bag" and "Blow" Clark.
- Nov. 19—Pep program in assembly arranged by Athletic Association. City championship game postponed because of a mixture of rain, sleet, snow.

H. M. CAWOOD

GROCERIES AND MEATS

1208 Anderson St.

Phone 5107

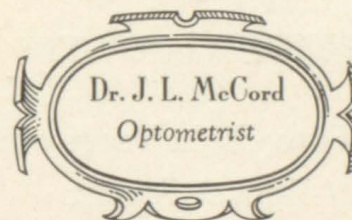
RALPH ENGLISH

CONFECTIONERY

Cor. State St. & Penn. Ave.

"RALPH'S BETTER POPCORN"

EYE EXAMINATIONS



Dr. J. L. McCord
Optometrist

526 State St.

BRISTOL, TENN.

Phone 5

FOR GRADUATION

The Exchange of Photographs Keeps the Memories—
Binds the Friendships of Happy School Days

HUTCHESON STUDIO

PHOTOGRAPHS OF DISTINCTION

The Smart, Well-Dressed Man Is Outfitted

By

REMINE-GOBBLE, Inc.

PARAMOUNT BLDG.

CALENDAR

- Nov. 22—Half of us nearly froze to death, but we "sho" enjoyed watching the team peel the Orange. Ten victories for Tennessee to nine for Virginia. Didn't it look swell to see both Capts. Hawkins and Clark meet Capt. Trivett?
- Nov. 23—A certain Senior asked Miss Dryden if a mare was masculine or feminine.
- Nov. 29—Austin Combs should be a magazine salesman, since he sold \$28.00 worth for the Seniors. Bob Wallace didn't do so bad either.
- Dec. 2—Nothing happened.
- Dec. 3—Football banquet. Mark Richards made a toast on the subject nearest his heart, and expressed his and Coach's sentiments to perfection when he said: "Girls are our heartache and Coach's headache."
- Dec. 7—Everyone seemed to be trying to talk the teachers out of five points, to pull that grade up to 85 so he could work next week.
- Dec. 9—The actors in THE SETTLEMENT OF JAMESTOWN reminded us of new Hi-Y girls. People walked backwards even then.
- Dec. 10—Junior Class gave its play, THE PROFESSOR'S MUMMY, a howling success. Fred Everett was acclaimed the star because he suited the role so adequately.
-

L. R. PETERS

STAPLE AND FANCY GROCERIES

Phone 5103

35 Sixth St.

MITCHELL-POWERS

Forty-Eight Years of
Honest Service

BRISTOL, VA.

BRISTOL DRUG CORP.

Bristol's Youngest
and
Most Modern Drug Store

633 State St.

KING COLLEGE

BRISTOL, TENN.-VA.

YOUR HOME-TOWN COLLEGE

Founded 1867

IT OFFERS YOU:

A Standard Four-Year College for Men and Women

Approved Courses Leading to A. B. Degree

Christian, University-Trained Faculty

Clean Athletics

Reasonable Costs

WHY NOT GO TO COLLEGE RIGHT AT HOME?

CATALOG ON REQUEST

CALENDAR

- Dec. 13—The streets were sheets of ice this morning; however, all but 150 of us managed to break some of it and come to school.
- Dec. 14—That little number which exploded sixth period kinda made us think the millennium had come.
- Dec. 15—An ultra-modern diesel engine was displayed and explained to the students.
- Dec. 17—Girls' Hi-Y had assembly program. Christmas vacation began.
- Jan. 3—Did you notice Mr. Bureson's ring had been changed? Couldn't you get along with her for two weeks, Berney?
- Jan. 5—Nancy Hilt from Dallas, Texas, entered our midst today.
- Jan. 6—Our Physics prof stated blue light tends to make a girl romantic, while red light has the same effect on a boy. He didn't mention what effect darkness had upon them!
- Jan. 10—Boys' Hi-Y had a dinner party at the Colonial Grill. Benny Cowan took all the lumps of sugar to his mother for the Cafeteria.
- Jan. 11—"Bingo" classes took the place of French classes today. Check your boards!
-



Compliments of

H. J. HILL

EDGEMONT SERVICE STATION



SULLINS COLLEGE

is fully accredited and offers a SCHOLARSHIP to every girl who graduates in the Bristol High Schools.

The advantages in Music, Art, Expression, Dramatics, Home Economics and Secretarial Course are in keeping with the high literary standards. Confer with us at Sullins College for information in reference to any courses desired.

W. E. MARTIN, PRESIDENT.

CALENDAR

- Jan. 12—Mr. Eggers expressed disapproval of Seniors Appleing during lunch period.
Jan. 13—Billy Treadwell elected president of the Senior Class.
Jan. 17—Rev. Worley made a talk in assembly on "Youth Time".
Jan. 18—Members of American History class gave a program for Rotary Club. Wonder how Rowe thinks up so many jokes!
Jan. 19—Mr. Mooney said his secret ambition is to teach a home ec. class.
Jan. 20—The "scholars" started taking a book or two home.
Jan. 21—The Freshman class had an assembly program which was very good. Henry Barker is quite an imitator of a mountaineer. Remember Hilliard's Bob Burns? The solos?
Jan. 24—Harry Phipps elected president of the student body.
Jan. 25—Apparently all one had to do to get out of fourth study hall was to present Mr. Burseson with two red apples; or, are Messerole and Treadwell teacher's pets?
-

Where else can boys and girls in their teens find wearables in such variety as at King's? Specialized buying for individualized departments makes for satisfaction in details more important now than ever before.

Now, more than ever, style, fit, and quality are requisites for correct wearables for boys and girls of the teen ages.

That's why boys and girls, as well as their parents, know King's as a style center. That's why so many boys and girls find at King's just what suits them best, just what distinguishes them as being well-dressed for every occasion.

THE H. P. KING COMPANY

BRISTOL

RIDE A
YELLOW CAB

» «

Phone 5100

» «

Day and Night

Compliments of
BALL BROTHERS, Inc.
FURNITURE

Since 1905

Easy Terms

506-510 State Street

BRISTOL, TENN.-VA.

**Oldest Furniture Store
in Bristol**

CALENDAR

Jan. 26—Exams began today, and on the next day various expressions told many a varied story.

Jan. 31—Report cards were given out. New Subs came over.

Feb. 1—The teachers lost no time in assigning lessons.

Feb. 2—Did anyone have the same schedule he had yesterday?

Feb. 3—New officers were installed. Rowe Driver, treasurer, said: "You will never know how much I owe Tennessee High."

Feb. 4—"Snooty" "Bear" Peoples starred as Virginia was beaten.

Feb. 7—Miss Owen proved (?) to her classes that 1 equals 2. Carolyn Riddle didn't get it.

Feb. 14—Wonder if Joe Bachman got Rosina for his Valentine?

Feb. 15—If every girl kept as good a watch over her better-half as our "quietest" girl did today, what would happen to those who like a little fun?

Stay in the Low Price Field—but
Step up to the V-8 Class
STATES MOTOR COMPANY

Won't you
HAV-A-TAMPA
The Largest Selling Cigar in the South
COWAN BRO'S.

Compliments of
Bristol's Greatest Grocery
LYNN-KAYLOR CO.

Compliments of
BRISTOL HOME TRADE STORE

PARAMOUNT THEATRE

"Bristol's Showplace"

OUR MOTTO—"ALWAYS THE BEST"

BRISTOL FLORAL COMPANY

534 State St.

BRISTOL

SPEEDOMETER SERVICE AND REPAIRS

STROMBERG-CARLSON RADIOS

COLUMBIA AND STERLING BICYCLES

E. H. HAMMER & CO., Bristol, Va.

CALENDAR

Feb. 21—There was a mad rush all day to collect money and tickets for the BUCCANEER, sponsored by the Senior Class. Wonder why Gerald and Mark wanted to go to Sullins and V. I.?

March 1—Seniors had achievement tests. Edith McCrosky had the highest Math grade, 71. The rest of them were anywhere between there and zero.

March 2—The team beat 'Betsy, 19-10 in the district tournament. The people surrounding a few Tennessee fans couldn't decide whom they were calling "Handsome."

March 3—The team defeated Mountain City, 28-20. Wonder if Messerole knew that he wasn't supposed to have dates after games, especially with blondes?

March 7—The cast for the Operetta was selected. Bobby Hagan, Virginia's contribution, proved his ability to sing.

March 11—Wonder why couples were so mixed at the Girls' Hi-Y banquet? Did Ellen start it by asking Jimmy Wilson?

April 7—The Operetta was, and LaVerne warbled.

April 22—Wasn't Mildred Glover the berries in TEMPEST AND SUNSHINE?

TROY LAUNDRY CO.

"The Home of Quality"

Compliments of

STONE LUMBER COMPANY

BRISTOL OFFICE SUPPLY COMPANY, Inc.

OFFICE SUPPLIES AND EQUIPMENT

All Makes of Typewriters Rebuilt, Overhauled and Repaired

529 State St.

BRISTOL, VA.

Phone 200

VIRGINIA INTERMONT

AN ENDOWED JUNIOR COLLEGE

Accredited by the Southern Association of Colleges and all other agencies that accredit junior colleges, including the University of the State of New York.

STANDARD COURSES:

1. Classical two-year courses admitting to Junior Year in Senior Colleges and Universities.
2. General Cultural Course (largely elective) for those not planning to spend more than the two years in college.
3. Home Economics.
4. Business and Secretarial Courses.
5. Art. Fine and Applied Art including Costume Design, Interior Decoration, Illustration, and China Painting.
6. Speech and Dramatic Art.
7. Physical Education.
8. Music: Piano, Organ, Voice, Violin, Theory.
9. High School.

Sports for every student: Archery, Basket-ball, Field Ball, Gymnastics, Hockey, Horseback Riding, Riflery, Swimming, Squash Racquets, Tennis, Track, Tumbling, Volley-ball.

For catalogue and full information, apply to

H. G. NOFFSINGER, President,
Virginia Intermont College,
Bristol, Virginia.

BUNTING'S DRUG STORE

CANDIES

SODA

KODAKS

FILMS

AND

FINISHING

ANNUAL
Craftsmen

Unusual Year Books

THE BUILDING OF A SUPERIOR YEAR BOOK REQUIRES THE CLOSEST COOPERATION ON THE PART OF THE STAFF, THE PHOTOGRAPHER, THE ENGRAVER AND THE PRINTER. OUR CONNECTIONS AND YEARS OF EXPERIENCE ENABLE US TO RENDER A COMPLETE SERVICE. IF YOU WANT TO PRODUCE AN OUTSTANDING YEAR BOOK, LET US HELP YOU. OUR EXPERT SERVICE WILL MINIMIZE MANY OF YOUR PUBLICATION PROBLEMS . .

THE KING PRINTING COMPANY

Printers « Engravers » Bookbinders

B R I S T O L , T E N N E S S E E

Autographs

Autographs

