

## What is coccidiosis?

Coccidiosis is an intestinal tract infection caused by one-celled organisms (protozoa) called coccidia. Coccidia are sub-classified into a number of genera, and each genus has a number of species. At least six different genera of coccidia can infect dogs. These microscopic parasites spend part of their life cycle in the lining cells of the intestine. Most infections are not associated with any detectable clinical signs. These infections are called sub-clinical infections. The species *Isospora canis* causes most clinical infections in dogs.

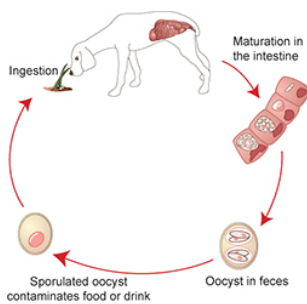


*Cryptosporidium parvum* is another coccidian parasite that may cause diarrhea in some puppies. The most common coccidia found in dogs do not have any affect on humans. However, less common types of coccidia are potentially infectious to humans. One parasite, called *Cryptosporidium*, may be carried by dogs or cats and may be transmitted to people. This parasite has also been found in the public water supply of some major cites. It poses a health risk for immunosuppressed humans such as AIDS patients, those taking immune suppressing drugs, cancer patients, or the elderly.

**Good hygiene and proper disposal of dog feces are important in minimizing risk of transmission of all canine parasites to humans, or to other animals**

**How is coccidiosis diagnosed?** Coccidiosis is diagnosed by performing a microscopic examination of a stool sample. Since the oocysts are much smaller than the eggs of intestinal worms, a careful fecal evaluation must be made. Infection with some of the less common coccidial parasites is diagnosed with a blood test.

**How is the coccidial infection treated?** The most common drug used to eliminate coccidia is a sulfa-type antibiotic. It is usually given for ten to fourteen days. In severe infections, it may be necessary to repeat the treatment. Other drugs may be required if diarrhea and dehydration occur. If the sulfa-type drug is not effective, other treatments are available. Re-infection of susceptible dogs is common so environmental disinfection is important. The use of diluted chlorine bleach [one cup (250 ml) of bleach mixed in one gallon of water] is effective if the surfaces and premises can be safely treated with it.



Used Under License  
 Copyright© Lifelearn Inc.

## How did my dog become infected with coccidia?

An infected dog passes oocysts (immature coccidia) in the feces. These oocysts are very resistant to a wide variety of environmental conditions and can survive for some time on the ground. Under the right conditions of temperature and humidity, these oocysts become infective. If a susceptible dog ingests the infective oocysts, the oocysts will release "sporozoites" that invade the intestinal lining cells and set up a cycle of infection in neighboring cells. Dogs may also be indirectly infected by eating a mouse that is infected

with coccidia.