



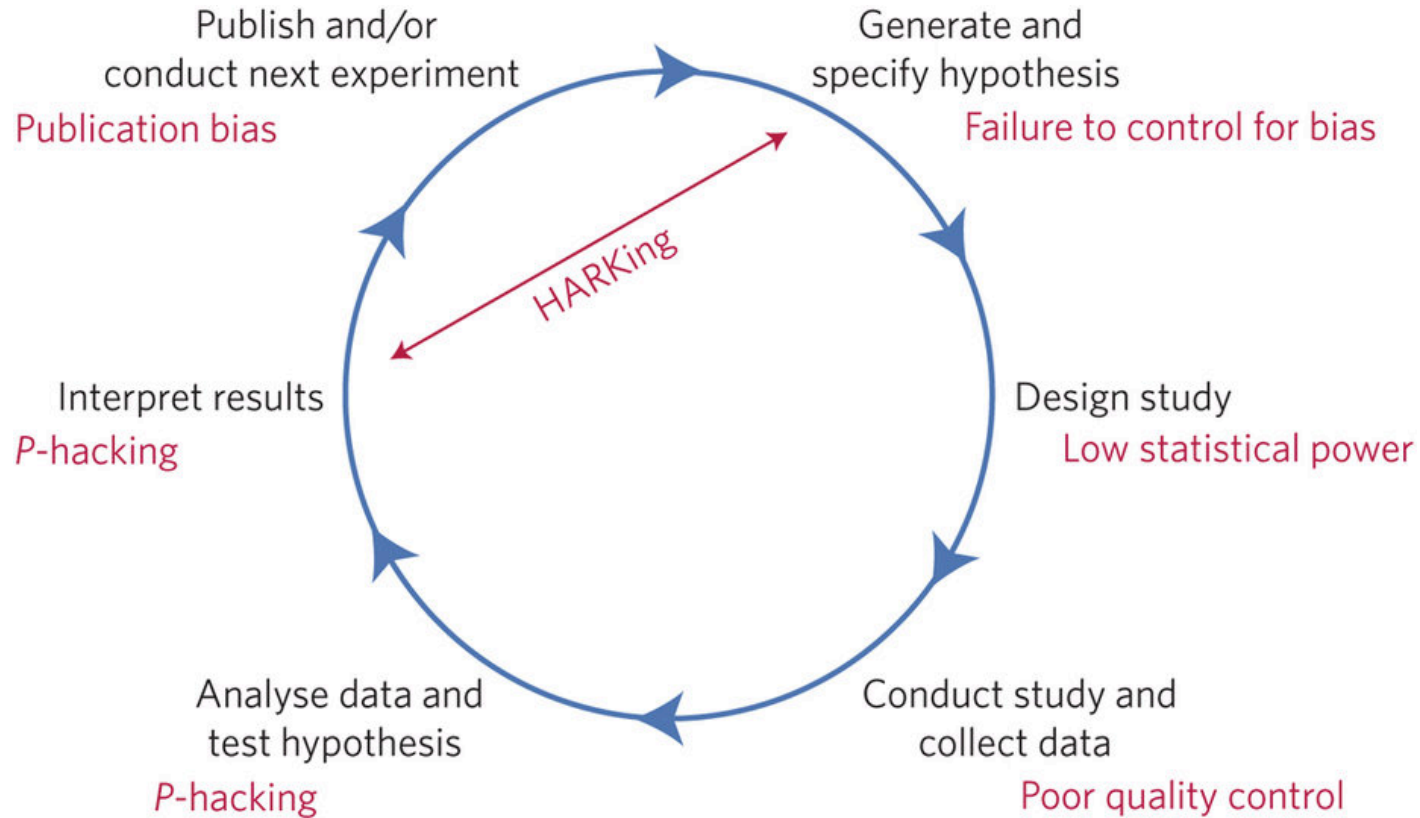
Preregistration

Daan Ornée
Charlotte Vrijen
Yoram Kunkels

PREREGISTERED
info@openscience-groningen.nl
@OSCGroningen

Presentation from the Open Science Center: cos.io/prereg

Hypo-Deductive Model of the Scientific Method



The Problem

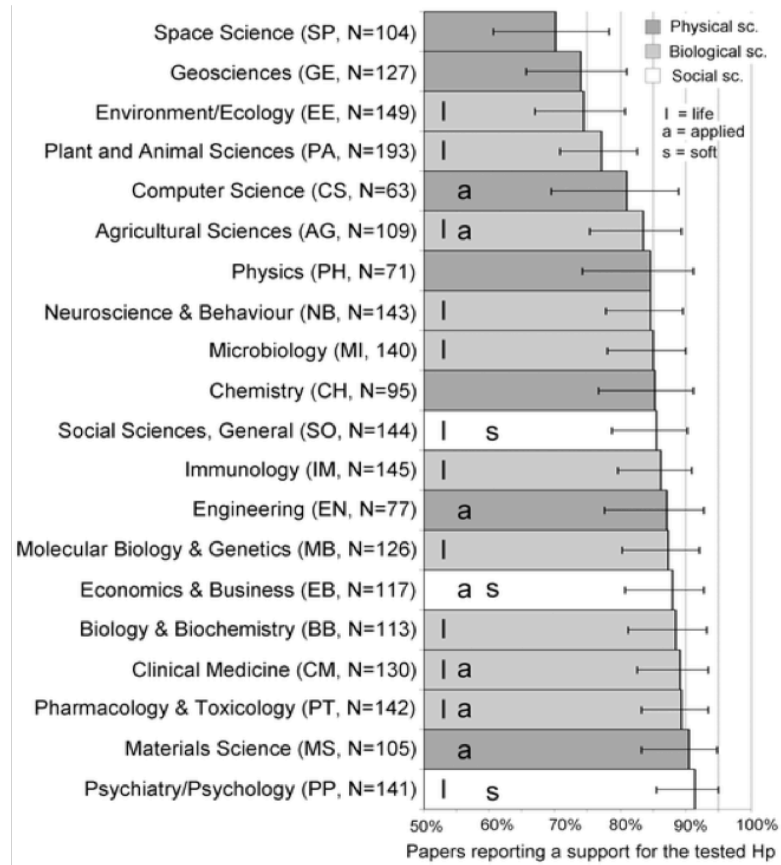
The combination of a strong bias toward statistically significant findings and flexibility in data analysis results can lead to irreproducible research



The Problem

The combination of a **strong bias toward statistically significant findings** and flexibility in data analysis results can lead to irreproducible research





Fanelli D (2010) "Positive" Results Increase Down the Hierarchy of the Sciences. PLoS ONE 5(4): e10068. doi:10.1371/journal.pone.0010068
<http://127.0.0.1:8081/plosone/article?id=info:doi/10.1371/journal.pone.0010068>

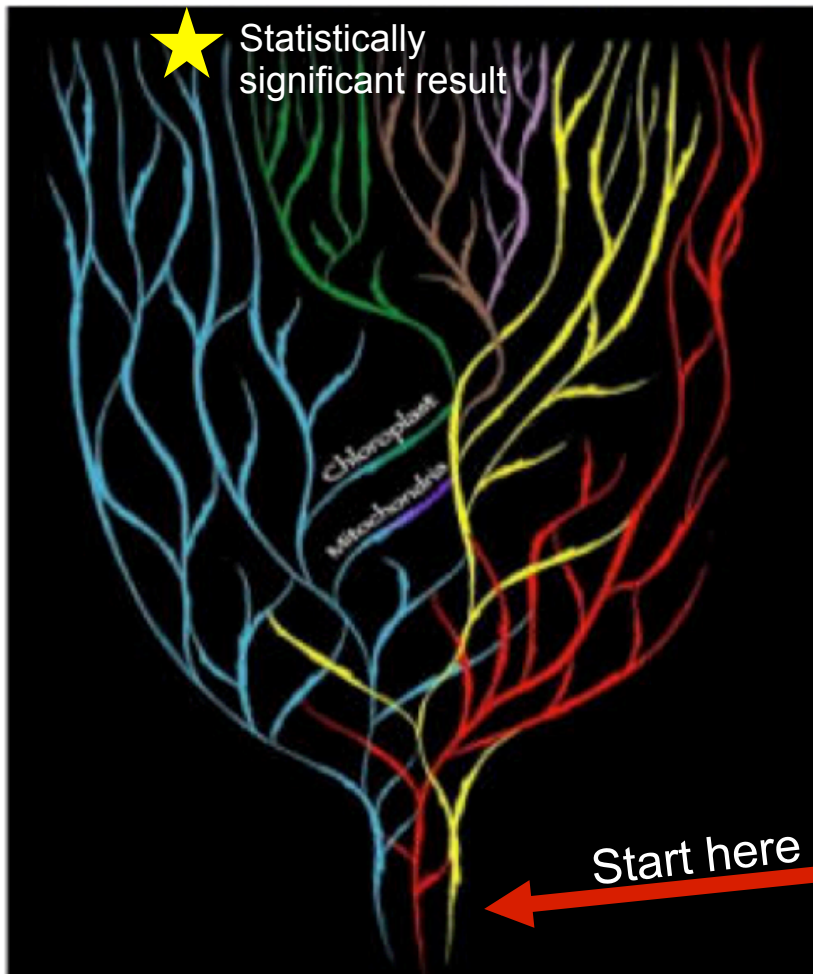


The Problem

The combination of a strong bias toward statistically significant findings and **flexibility in data analysis** results can lead to irreproducible research



The Garden of Forking Paths



Control for time?

Exclude outliers?

Median or mean?

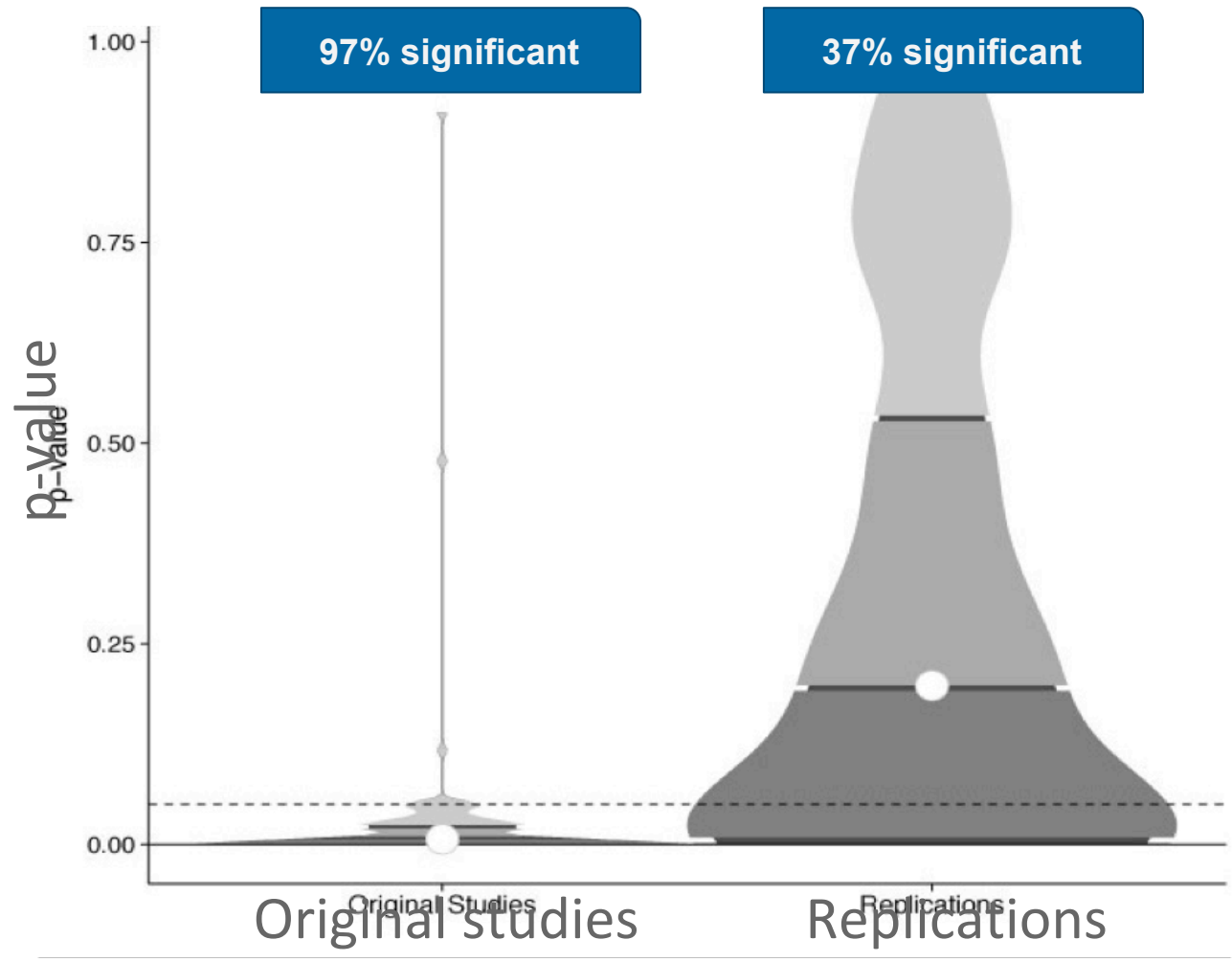
Hypothesis: “Does X affect Y?”

The Problem

The combination of a strong bias toward statistically significant findings and flexibility in data analysis results can lead to **irreproducible research**



Reproducibility Project: Psychology



What is Preregistration?



What is Preregistration?

A time-stamped, read-only version of your research plan created ***before*** you begin data collection.



What is Preregistration?

A time-stamped, read-only version of your research plan created *before* you begin data collection.

It contains:

- Hypothesis
- Data collection procedures
- Manipulated and measured variables
- Statistical model
- Inference criteria

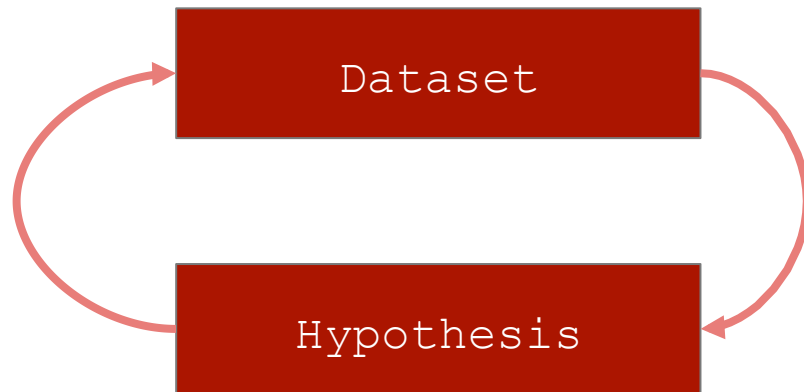


When the research plan undergoes **peer review before results are known**, the preregistration becomes part of a Registered Report



What problems does preregistration fix?

1. The file drawer effect
2. **P-Hacking**: Unreported flexibility in data analysis
3. **HARKing**: Hypothesizing After Results are Known



What problems does preregistration fix?

Preregistration makes the distinction between **confirmatory** (hypothesis testing) and **exploratory** (hypothesis generating) research more clear.



Confirmatory vs. Exploratory Analysis

Context of confirmation

- Traditional hypothesis testing
- Results held to the highest standards of rigor
- Goal is to minimize false positives

P-values interpretable

Context of discovery

- Pushes knowledge into new areas/ data-led discovery
- Finds unexpected relationships
- Goal is to minimize false negatives

P-values meaningless



Confirmatory vs. Exploratory Analysis

Presenting exploratory results as confirmatory increases the publishability of results **at the expense of credibility of results.**

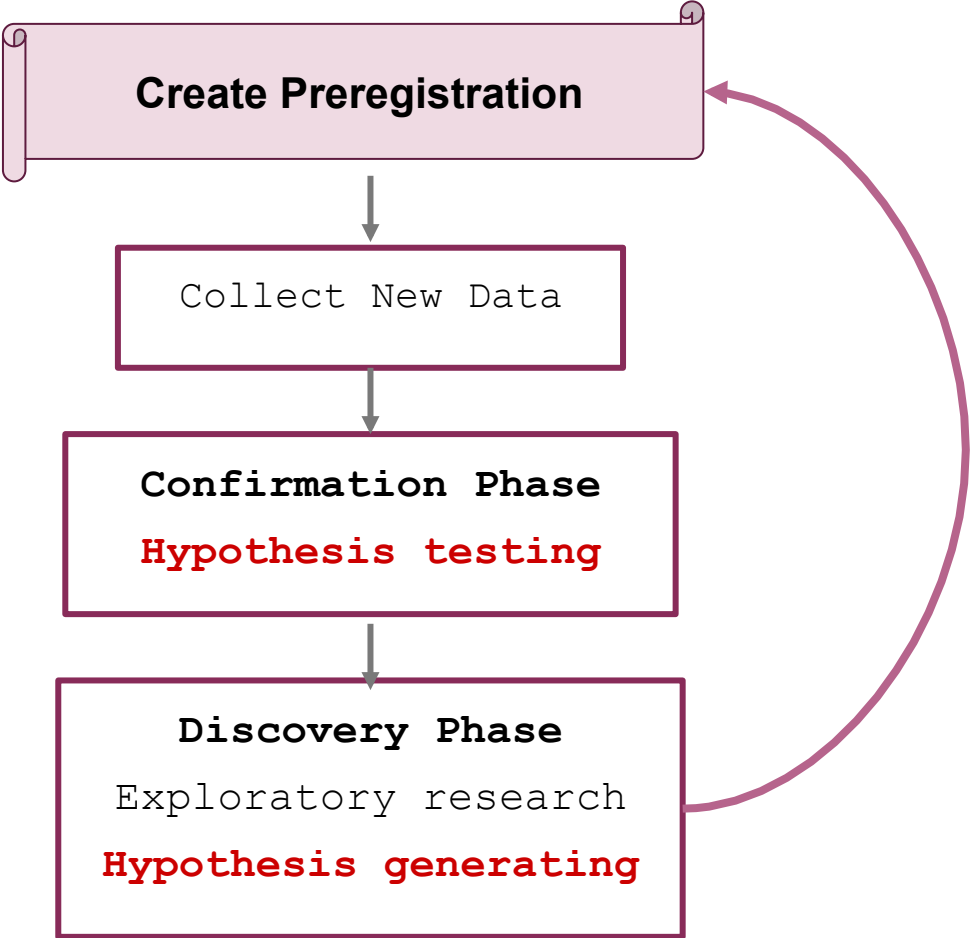
P-values interpretable

P-values meaningless



Example workflow

Theory driven, a-priori expectations



Incentives to Preregister



You can receive a **Preregistered Badge** for preregistering your research *before* you begin your study. Visit cos.io/badges for more information and to see which journals currently issue badges.



Let's look at OSF form, real-time!

<http://osf.io/prereg/>

Examples of completed preregistrations:

<https://osf.io/e6auq/wiki/Example%20Preregistrations/?view>



Different formats for different studies

- **Use of secondary data:** <https://osf.io/x4gzt/>
- **Qualitative Research:** <https://osf.io/dv8km/> or <https://osf.io/j7ghv/>
- **Experience sampling (ESM) studies:** <https://osf.io/2chmu/>
- **fMRI studies:** <https://osf.io/6juft/>
- **Systematic reviews and meta-analyses:**
<https://osf.io/preprints/metaarxiv/3nbea>

Just some examples, there are many more



Want help? OSCG Q&A

Bi-monthly preregistration Q&A in 2021:

January 19, 13:00-14:00

March 1, 13:00-14:00

September 7, 13:00-14:00

November 8, 13:00-14:00

PREREGISTERED
Please send an email to
info@openscience-groningen.nl
to receive the google meet link

Preregistration video tutorials

- Goal: offering information and step-by-step guides on pre-registration.
- Format: Short (5 to 10 minutes) video's disseminated online.

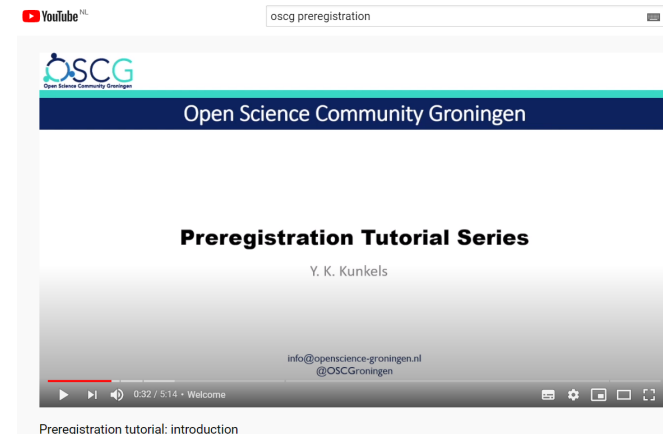


Preregistration video tutorials

- Series: Looking at one major topic at a time and breaking it down into small, manageable chunks.
- Interactivity & relevancy: Easily skip to a part of video that is most relevant.

- Example:

https://www.youtube.com/watch?v=O6IL_VcSfE4



FAQs



FAQs

Can't someone "scoop" my ideas?



FAQs

Can't someone “scoop” my ideas?

1. Date-stamped preregistrations make your claim verifiable.
2. By the time you've preregistered, you are ahead of any possible scooper.
3. Embargo your preregistration.



FAQs

Isn't it easy to cheat?



FAQs

Isn't it easy to cheat?

1. Making a “preregistration” after conducting the study.
2. Making multiple preregistrations and only citing the one that “worked.”



FAQs

Isn't it easy to cheat?

1. Making a “preregistration” after conducting the study.
2. Making multiple preregistrations and only citing the one that “worked.”

While fairly easy to do, this makes fraud **more intentional**.

Preregistration helps keep you honest to **yourself**.

Tips for writing up preregistered work

1. Include a link to your preregistration (e.g. <https://osf.io/f45xp>)
2. Report the results of **ALL** preregistered analyses
3. **ANY** unregistered analyses must be transparent



Thank you for attending!

1. POLL: Do you think you will attend one of the next Q&A sessions



THANK YOU!



Learn more: cos.io/prereg

