

KINGDOM PROTISTA

ANIMAL-LIKE
PROTISTS

ZOOPLANKTON

4 PHYLA:

1. Sarcodina (*Amoeba*)
2. Ciliophora (*Paramecium*)
3. Sporozoa (*Plasmodium*)
4. Mastigophora / Zoomastigina
(*Trichonympha* & *Trypanosomiasis*)

Sarcodina (Amoeba)

Phylum Sarcodina

🌱 Reproduction: asexual

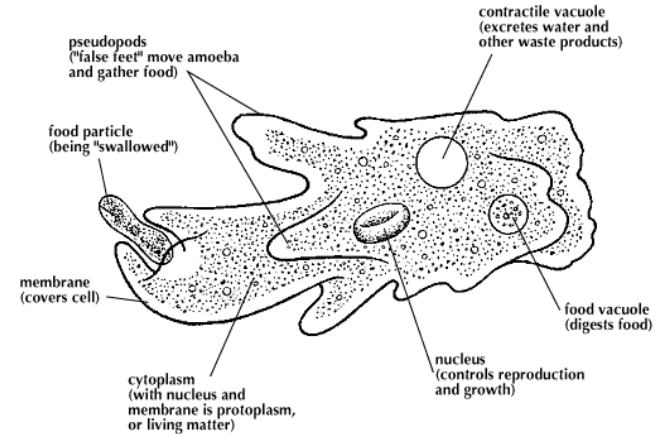
🌱 Locomotion: pseudopods (false feet)

🌱 Movement occurs by **cytoplasmic streaming** → extensions or projections of cytoplasm (projections = pseudopods)

🌱 Nutrition: phagocytosis - heterotrophs

🌱 Other information: Cytoplasmic streaming

🌱 Example: *Amoeba*



AMOEBEA FEEDING



Ciliophora (Paramecium)

Phylum Ciliophora

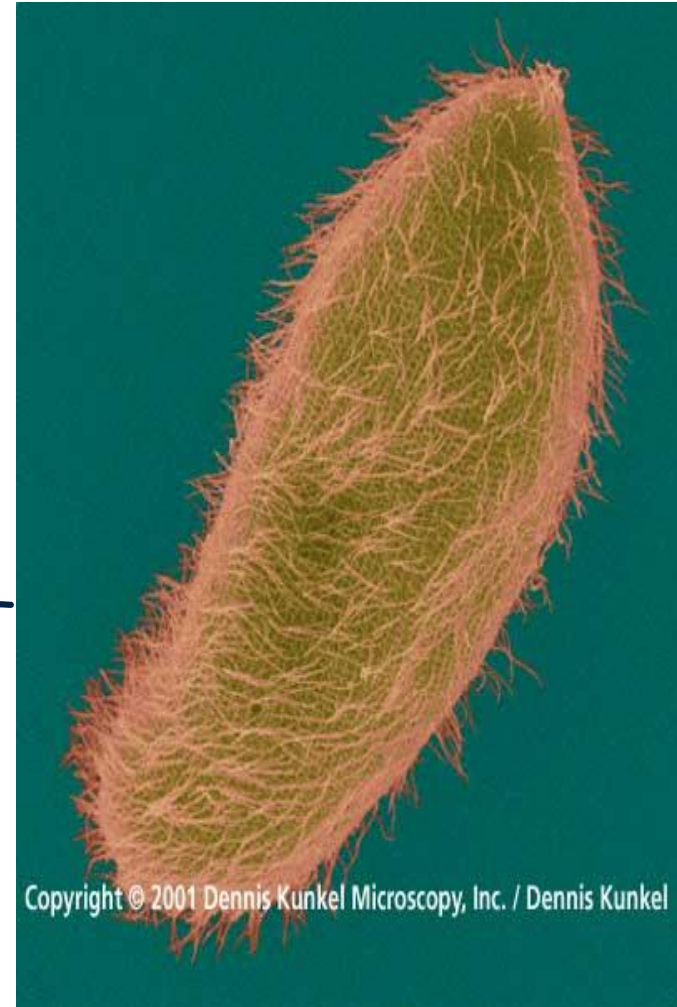
✿ Reproduction: asexual & sexual

✿ Locomotion: cilia

✿ Nutrition: Cilia used to sweep food into "mouth" - heterotrophs

✿ Other information: Trichocysts - for defense

✿ Example: *Paramecium*



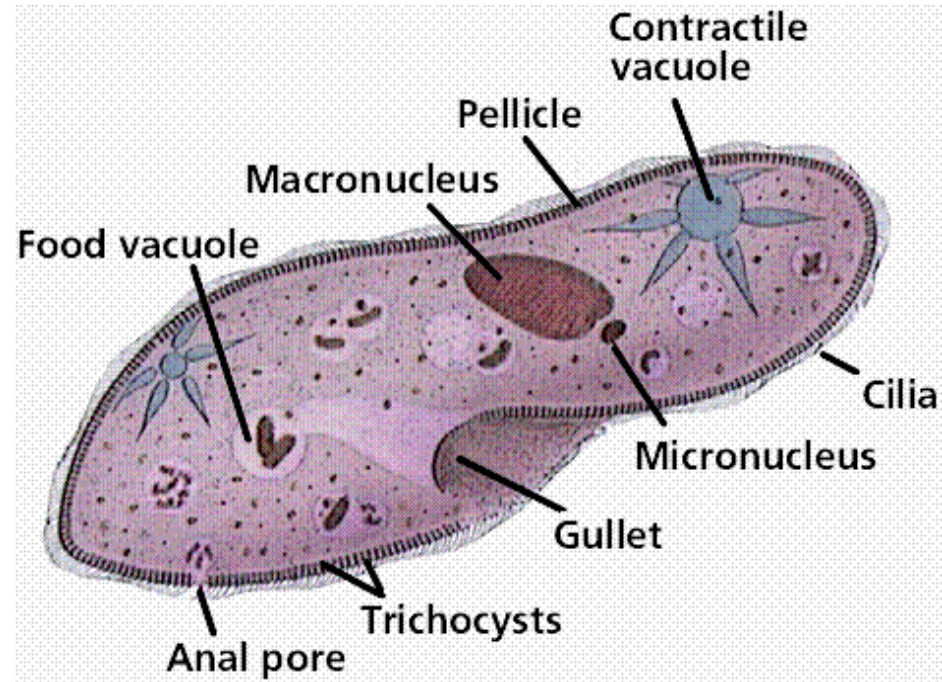
Copyright © 2001 Dennis Kunkel Microscopy, Inc. / Dennis Kunkel

Phylum Ciliophora: PARAMECIUM

🌿 2 Nuclei

Macronucleus controls cell activities

Micronucleus is involved in reproduction



Sporozoa (Plasmodium)

Phylum Sporozoa

 Reproduction: Asexual & sexual (spores)

 Locomotion: Non motile = rely on vector or body fluids of host of movement

 Nutrition: All parasitic - heterotrophs

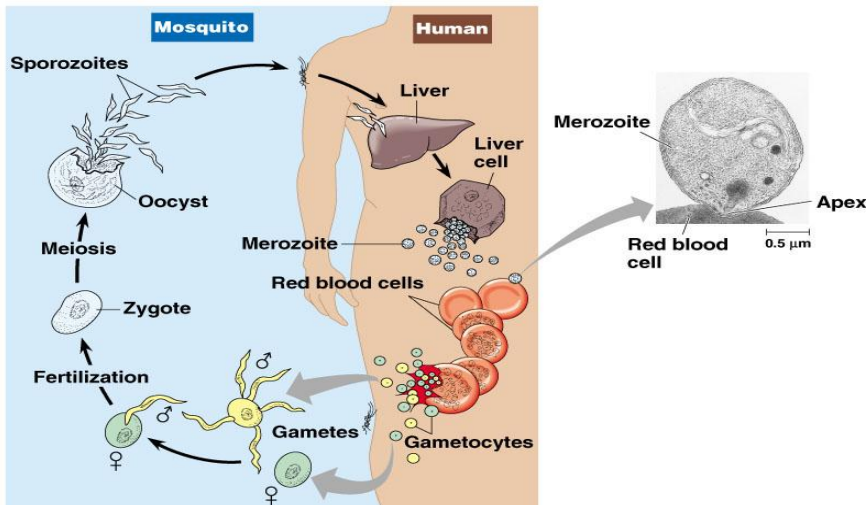
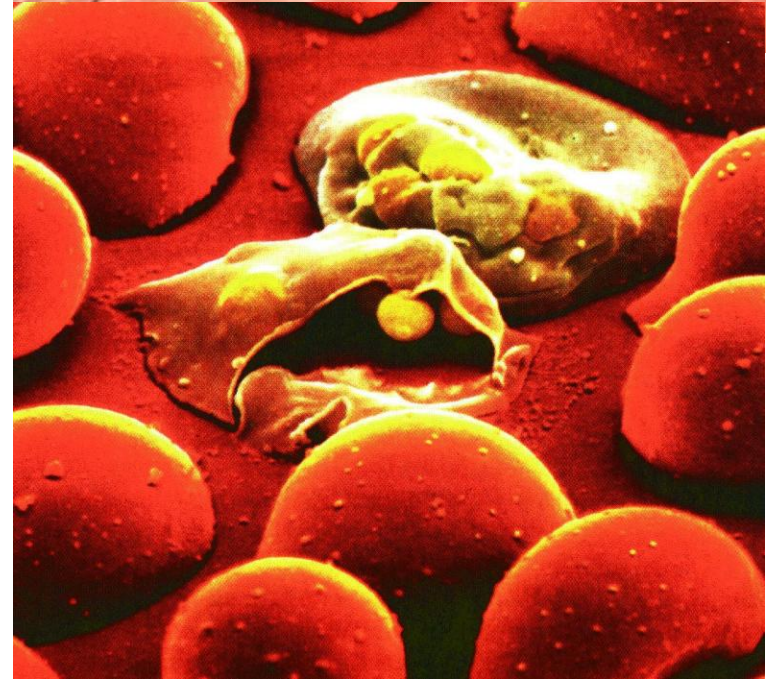
 Other information: Need host for nutrition

 Example: *Plasmodium*

Do not
copy

PLASMODIUM LIFE CYCLE

- 🌿 Vectors (mosquitos) transmit plasmodium from 1 host to another - the only way plasmodium can move
- 🌿 Causes malaria in humans - humans are the host
- 🌿 Have a spore-like stage in life cycle



Mastigophora / Zoomastigina
(Trichonympha & Trypanosomiasis)

Mastigophora / Zoomastigina

- Reproduction: asexual
- Locomotion: Flagella
- Nutrition: Heterotrophs
- most are parasites
- Other information: cause disease in humans
- Examples: *Trichonympha* & *Trypanosomiasis*

