



Prepared in cooperation by the Dodge County Historical Society, Dodge County and the Goodhue County GIS Office

Kasson

LOCATION: Kasson, MN 55944

STATUS: Public

TYPE: Historic, Town

HISTORY: Kasson was platted in 1865 by a Pennsylvanian man named Jabez Hyde Kasson who came to the county in 1856. Kasson was officially platted in 1865 and incorporated in 1870. Kasson saw its first train arrive from the Winona and St. Peter Railway in November of 1865. The first steam train on this rail arrived on July 13th, 1866. Kasson published the Dodge County Republican (Independent) on May 3rd, 1867 and it is still in use today.

Today, Kasson is the largest town in Dodge County at a population of 6,931 (2021). It is located at the intersection of HWY 57 and Interstate 14, making it a popular place to stop for travelers, and residents of the county.

OTHER RESOURCES:

<https://www.dodgecountyhistorical.org/>

https://www.co.dodge.mn.us/Government_and_Links/DODGE_COUNTY_HISTORY.pdf

PROPERTY PICTURES:



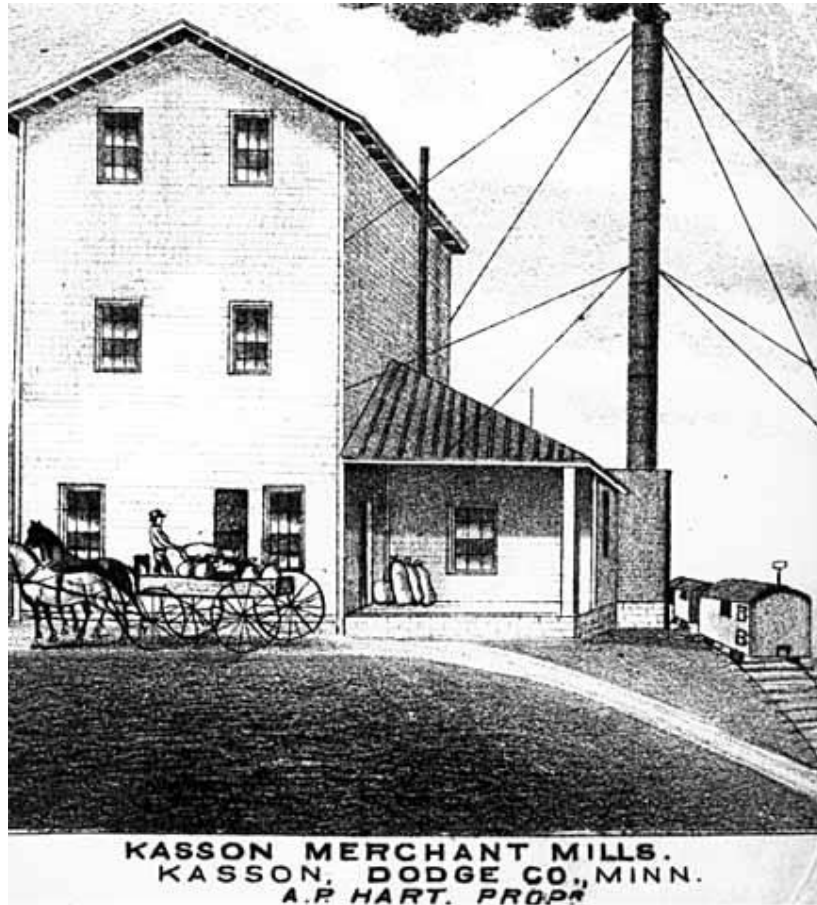
Water Tower, 1910

Courtesy of the Minnesota Historical Society



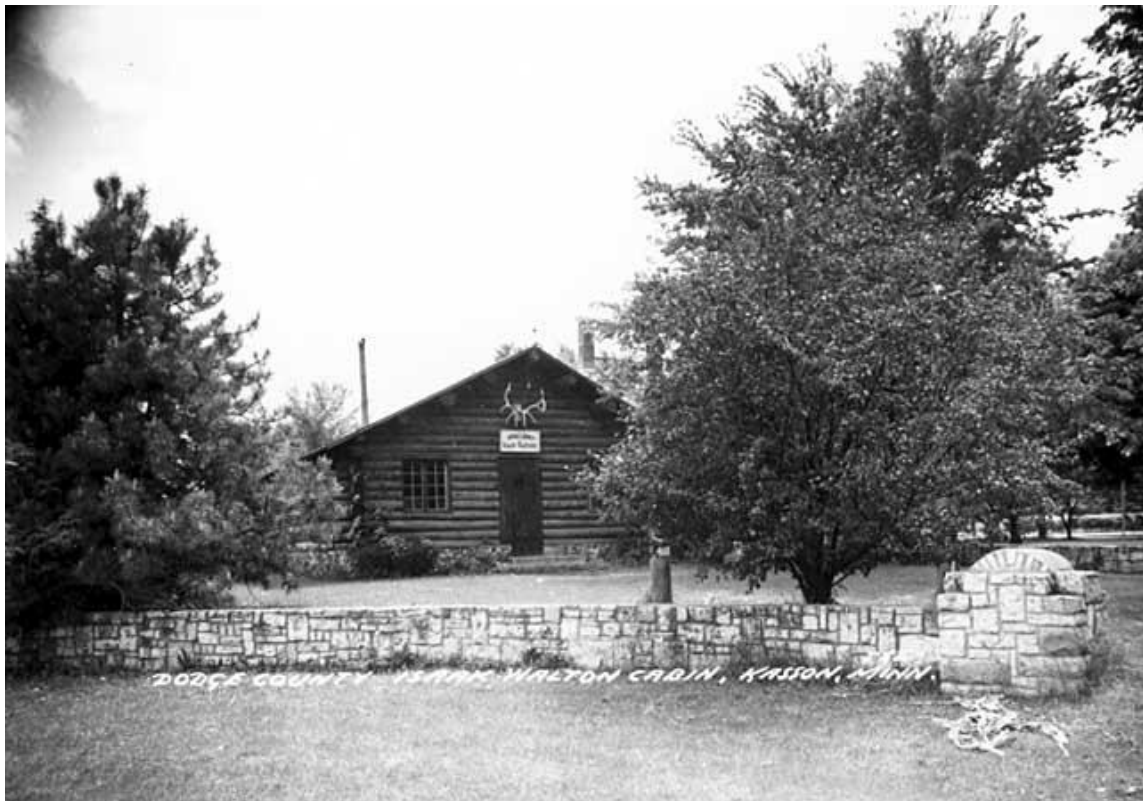
Depot at Kasson, 1920

Courtesy of the Minnesota Historical Society



**KASSON MERCHANT MILLS.
KASSON, DODGE CO., MINN.
A. P. HART. PROP.**

Kasson Merchant Mills, 1874 Courtesy of the Minnesota Historical Society



Isaac Walton Building, 1956 Courtesy of the Minnesota Historical Society



Kasson Hotel, 1956

Courtesy of the Minnesota Historical Society



Main Street Kasson, 1900

Courtesy of the Minnesota Historical Society



Main Street Kasson, 1956

Courtesy of the Minnesota Historical Society



Entrance to bath house at the city park, 1939

Courtesy of the Minnesota Historical Society



KASSON MINN. 8102
Kasson Municipal Building, 1918 Courtesy of the Minnesota Historical Society



KASSON HOTEL - KASSON, MINN.
Kasson Hotel, 1954 Courtesy of the Minnesota Historical Society

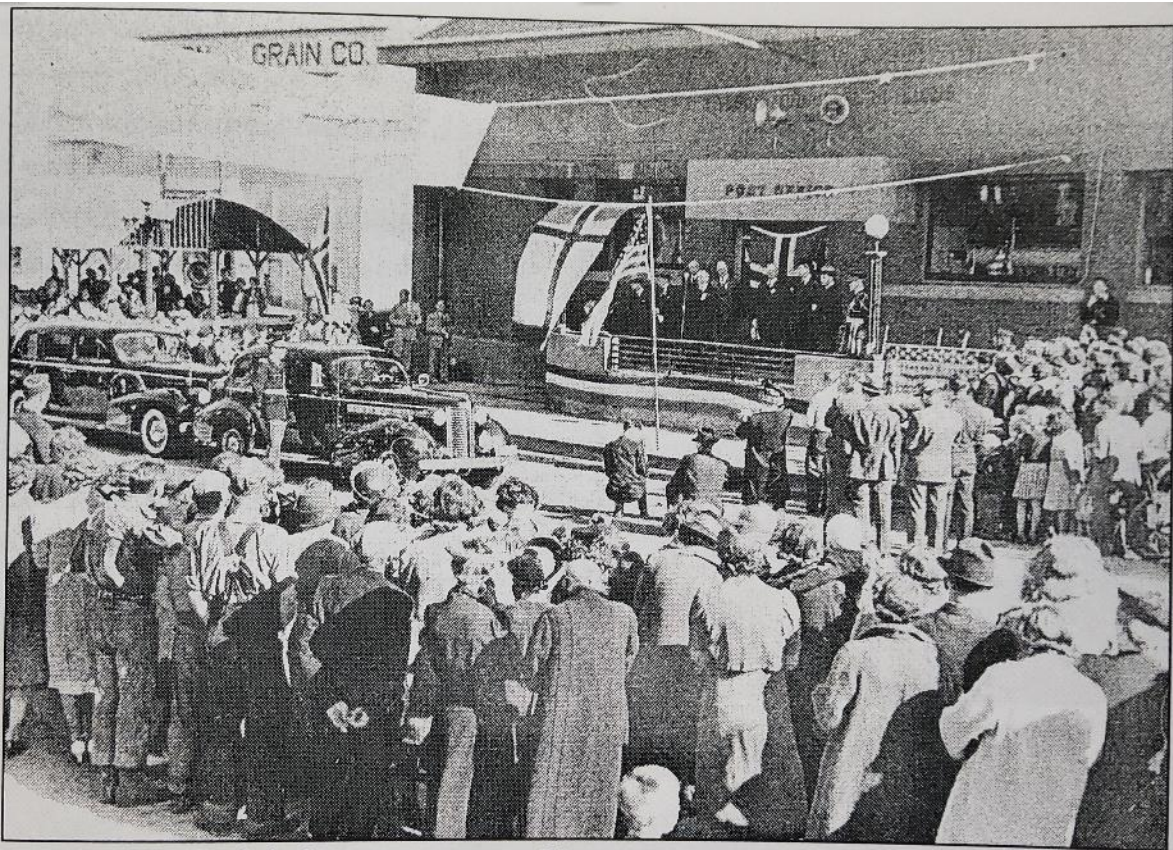


Pleasant Corners Emanuel Evangelical Church and parsonage, 1933 Courtesy of the Minnesota Historical Society



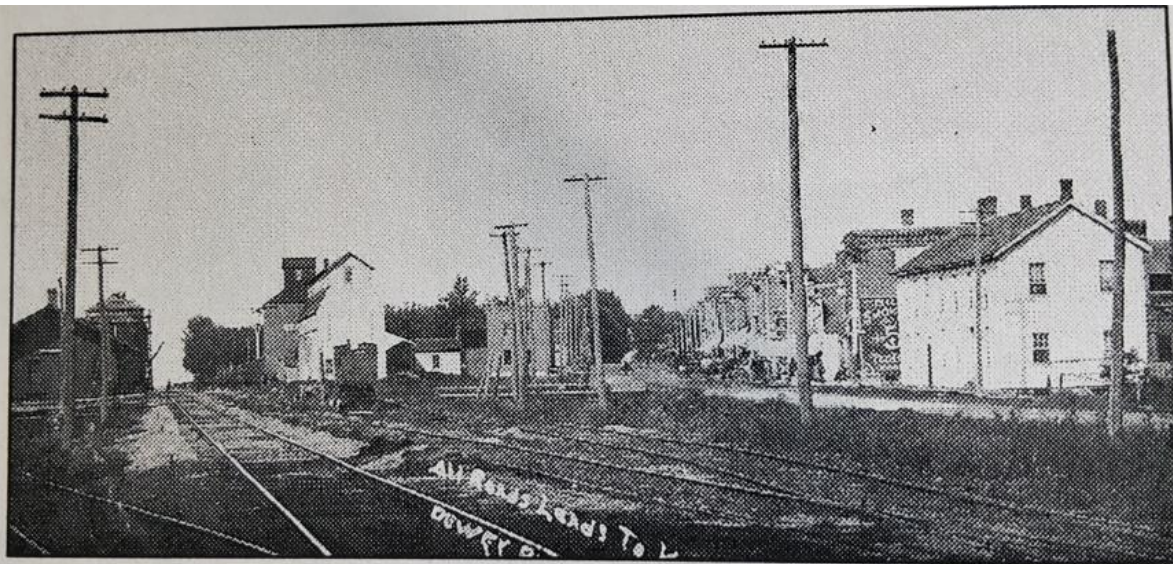
Methodist Church and parsonage, 1956

Courtesy of the Minnesota Historical Society



In 1939 Prince Olaf of Norway came to Kasson.

Photo courtesy of Kasson Remembered by James Abel



Old Railroad Station in Kasson.

Photo courtesy of Kasson Remembered by James Abel